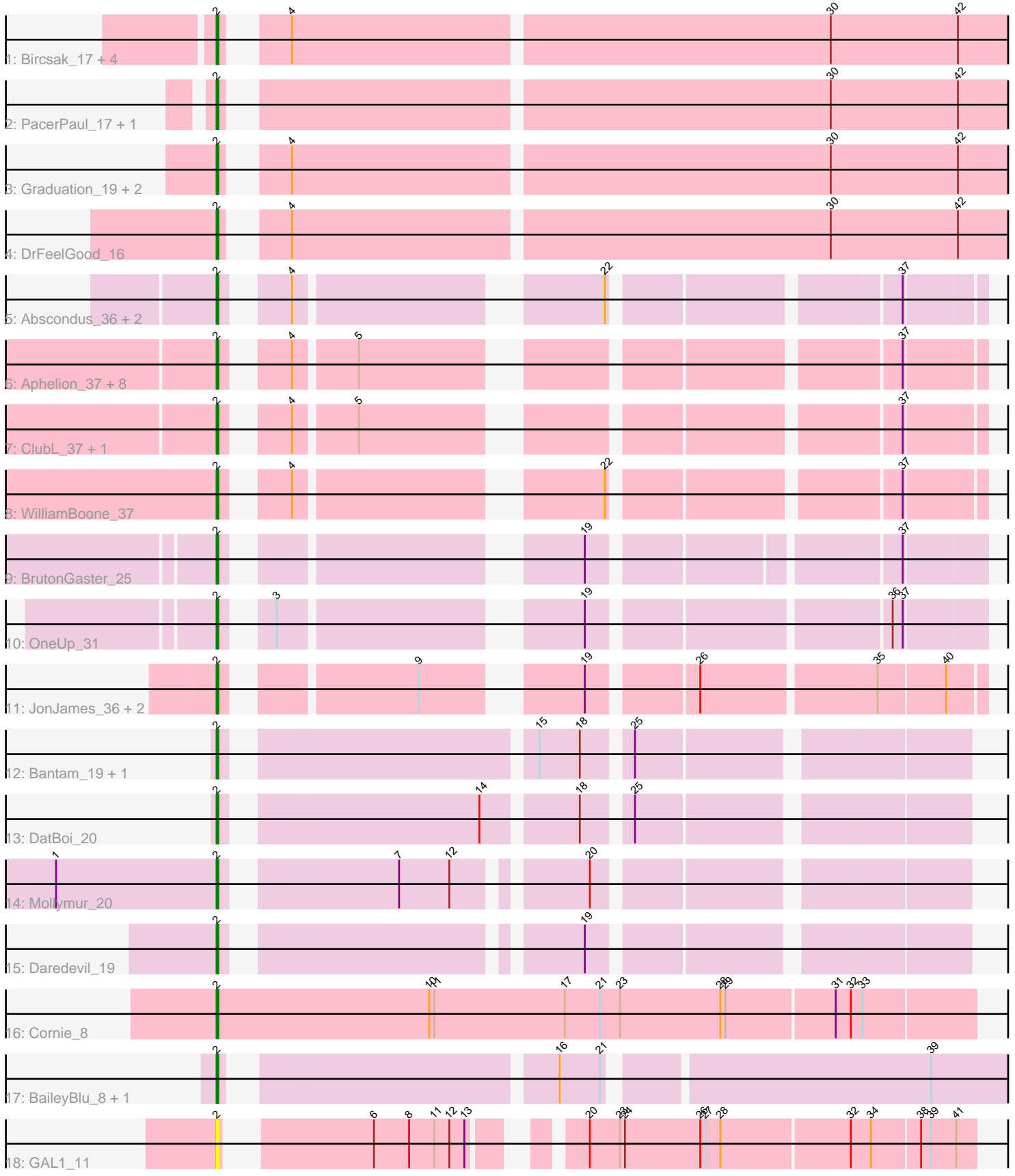


# Pham 163738



Note: Tracks are now grouped by subcluster and scaled. Switching in subcluster is indicated by changes in track color. Track scale is now set by default to display the region 30 bp upstream of start 1 to 30 bp downstream of the last possible start. If this default region is judged to be packed too tightly with annotated starts, the track will be further scaled to only show that region of the ORF with annotated starts. This action will be indicated by adding "Zoomed" to the title. For starts, yellow indicates the location of called starts comprised solely of Glimmer/GeneMark auto-annotations, green indicates the location of called starts with at least 1 manual gene annotation.

## Pham 163738 Report

This analysis was run 04/28/24 on database version 559.

Pham number 163738 has 40 members, 6 are drafts.

Phages represented in each track:

- Track 1 : Bircsak\_17, StrongArm\_16, Bexan\_16, Tripl3t\_18, Gompeii16\_17
- Track 2 : PacerPaul\_17, ConceptII\_18
- Track 3 : Graduation\_19, BluSpix\_17, IgnatiusPatJac\_16
- Track 4 : DrFeelGood\_16
- Track 5 : Abscondus\_36, Dusty\_35, Culver\_37
- Track 6 : Aphelion\_37, Bachita\_39, Norvs\_38, Smoothie\_38, Engineer\_38, Lozinak\_37, Cucurbita\_39, PhinkBoden\_37, Toniann\_37
- Track 7 : ClubL\_37, Miskis\_39
- Track 8 : WilliamBoone\_37
- Track 9 : BrutonGaster\_25
- Track 10 : OneUp\_31
- Track 11 : JonJames\_36, Cardigan\_36, Yvonnestic\_34
- Track 12 : Bantam\_19, SpeedDemon\_200
- Track 13 : DatBoi\_20
- Track 14 : Mollymur\_20
- Track 15 : Daredevil\_19
- Track 16 : Cornie\_8
- Track 17 : BaileyBlu\_8, CallinAllBarbz\_8
- Track 18 : GAL1\_11

### ***Summary of Final Annotations (See graph section above for start numbers):***

The start number called the most often in the published annotations is 2, it was called in 34 of the 34 non-draft genes in the pham.

Genes that call this "Most Annotated" start:

- Abscondus\_36, Aphelion\_37, Bachita\_39, BaileyBlu\_8, Bantam\_19, Bexan\_16, Bircsak\_17, BluSpix\_17, BrutonGaster\_25, CallinAllBarbz\_8, Cardigan\_36, ClubL\_37, ConceptII\_18, Cornie\_8, Cucurbita\_39, Culver\_37, Daredevil\_19, DatBoi\_20, DrFeelGood\_16, Dusty\_35, Engineer\_38, GAL1\_11, Gompeii16\_17, Graduation\_19, IgnatiusPatJac\_16, JonJames\_36, Lozinak\_37, Miskis\_39, Mollymur\_20, Norvs\_38, OneUp\_31, PacerPaul\_17, PhinkBoden\_37, Smoothie\_38, SpeedDemon\_200, StrongArm\_16, Toniann\_37, Tripl3t\_18, WilliamBoone\_37, Yvonnestic\_34,

Genes that have the "Most Annotated" start but do not call it:

- 

Genes that do not have the "Most Annotated" start:

- 

### Summary by start number:

Start 2:

- Found in 40 of 40 ( 100.0% ) of genes in pham
- Manual Annotations of this start: 34 of 34
- Called 100.0% of time when present
- Phage (with cluster) where this start called: Abscondus\_36 (CQ), Aphelion\_37 (CQ1), Bachita\_39 (CQ1), BaileyBlu\_8 (FP), Bantam\_19 (DL), Bexan\_16 (A1), Bircsak\_17 (A1), BluSpix\_17 (A1), BrutonGaster\_25 (CQ2), CallinAllBarbz\_8 (FP), Cardigan\_36 (DD), ClubL\_37 (CQ1), ConceptII\_18 (A1), Cornie\_8 (F5), Cucurbita\_39 (CQ1), Culver\_37 (CQ1), Daredevil\_19 (DL), DatBoi\_20 (DL), DrFeelGood\_16 (A1), Dusty\_35 (CQ), Engineer\_38 (CQ1), GAL1\_11 (singleton), Gompeii16\_17 (A1), Graduation\_19 (A1), IgnatiusPatJac\_16 (A1), JonJames\_36 (DD), Lozinak\_37 (CQ1), Miskis\_39 (CQ), Mollymur\_20 (DL), Norvs\_38 (CQ), OneUp\_31 (CQ2), PacerPaul\_17 (A1), PhinkBoden\_37 (CQ1), Smoothie\_38 (CQ1), SpeedDemon\_200 (DL), StrongArm\_16 (A1), Toniann\_37 (CQ1), Tripl3t\_18 (A1), WilliamBoone\_37 (CQ1), Yvonnestic\_34 (DD),

### Summary by clusters:

There are 9 clusters represented in this pham: FP, DL, F5, DD, singleton, A1, CQ2, CQ, CQ1,

Info for manual annotations of cluster A1:

- Start number 2 was manually annotated 10 times for cluster A1.

Info for manual annotations of cluster CQ:

- Start number 2 was manually annotated 1 time for cluster CQ.

Info for manual annotations of cluster CQ1:

- Start number 2 was manually annotated 11 times for cluster CQ1.

Info for manual annotations of cluster CQ2:

- Start number 2 was manually annotated 2 times for cluster CQ2.

Info for manual annotations of cluster DD:

- Start number 2 was manually annotated 2 times for cluster DD.

Info for manual annotations of cluster DL:

- Start number 2 was manually annotated 5 times for cluster DL.

Info for manual annotations of cluster F5:

- Start number 2 was manually annotated 1 time for cluster F5.

Info for manual annotations of cluster FP:

- Start number 2 was manually annotated 2 times for cluster FP.

**Gene Information:**

Gene: Abscondus\_36 Start: 15494, Stop: 15874, Start Num: 2

Candidate Starts for Abscondus\_36:

(Start: 2 @15494 has 34 MA's), (4, 15521), (22, 15677), (37, 15830),

Gene: Aphelion\_37 Start: 15763, Stop: 16143, Start Num: 2

Candidate Starts for Aphelion\_37:

(Start: 2 @15763 has 34 MA's), (4, 15790), (5, 15823), (37, 16099),

Gene: Bachita\_39 Start: 16196, Stop: 16576, Start Num: 2

Candidate Starts for Bachita\_39:

(Start: 2 @16196 has 34 MA's), (4, 16223), (5, 16256), (37, 16532),

Gene: BaileyBlu\_8 Start: 5760, Stop: 6185, Start Num: 2

Candidate Starts for BaileyBlu\_8:

(Start: 2 @5760 has 34 MA's), (16, 5934), (21, 5958), (39, 6138),

Gene: Bantam\_19 Start: 13233, Stop: 13628, Start Num: 2

Candidate Starts for Bantam\_19:

(Start: 2 @13233 has 34 MA's), (15, 13398), (18, 13422), (25, 13446),

Gene: Bexan\_16 Start: 13900, Stop: 14349, Start Num: 2

Candidate Starts for Bexan\_16:

(Start: 2 @13900 has 34 MA's), (4, 13924), (30, 14236), (42, 14311),

Gene: Bircsak\_17 Start: 13409, Stop: 13858, Start Num: 2

Candidate Starts for Bircsak\_17:

(Start: 2 @13409 has 34 MA's), (4, 13433), (30, 13745), (42, 13820),

Gene: BluSpix\_17 Start: 12911, Stop: 13360, Start Num: 2

Candidate Starts for BluSpix\_17:

(Start: 2 @12911 has 34 MA's), (4, 12935), (30, 13247), (42, 13322),

Gene: BrutonGaster\_25 Start: 12392, Stop: 12775, Start Num: 2

Candidate Starts for BrutonGaster\_25:

(Start: 2 @12392 has 34 MA's), (19, 12563), (37, 12728),

Gene: CallinAllBarbz\_8 Start: 5770, Stop: 6195, Start Num: 2

Candidate Starts for CallinAllBarbz\_8:

(Start: 2 @5770 has 34 MA's), (16, 5944), (21, 5968), (39, 6148),

Gene: Cardigan\_36 Start: 17393, Stop: 17779, Start Num: 2

Candidate Starts for Cardigan\_36:

(Start: 2 @17393 has 34 MA's), (9, 17489), (19, 17564), (26, 17621), (35, 17720), (40, 17759),

Gene: ClubL\_37 Start: 15685, Stop: 16065, Start Num: 2

Candidate Starts for ClubL\_37:

(Start: 2 @15685 has 34 MA's), (4, 15712), (5, 15745), (37, 16021),

Gene: ConceptII\_18 Start: 13371, Stop: 13820, Start Num: 2

Candidate Starts for ConceptII\_18:

(Start: 2 @13371 has 34 MA's), (30, 13707), (42, 13782),

Gene: Cornie\_8 Start: 6217, Stop: 6663, Start Num: 2

Candidate Starts for Cornie\_8:

(Start: 2 @6217 has 34 MA's), (10, 6343), (11, 6346), (17, 6424), (21, 6445), (23, 6457), (28, 6517), (29, 6520), (31, 6583), (32, 6592), (33, 6598),

Gene: Cucurbita\_39 Start: 17055, Stop: 17435, Start Num: 2

Candidate Starts for Cucurbita\_39:

(Start: 2 @17055 has 34 MA's), (4, 17082), (5, 17115), (37, 17391),

Gene: Culver\_37 Start: 15494, Stop: 15874, Start Num: 2

Candidate Starts for Culver\_37:

(Start: 2 @15494 has 34 MA's), (4, 15521), (22, 15677), (37, 15830),

Gene: Daredevil\_19 Start: 12081, Stop: 12467, Start Num: 2

Candidate Starts for Daredevil\_19:

(Start: 2 @12081 has 34 MA's), (19, 12264),

Gene: DatBoi\_20 Start: 14024, Stop: 14419, Start Num: 2

Candidate Starts for DatBoi\_20:

(Start: 2 @14024 has 34 MA's), (14, 14162), (18, 14213), (25, 14237),

Gene: DrFeelGood\_16 Start: 12986, Stop: 13435, Start Num: 2

Candidate Starts for DrFeelGood\_16:

(Start: 2 @12986 has 34 MA's), (4, 13010), (30, 13322), (42, 13397),

Gene: Dusty\_35 Start: 15494, Stop: 15874, Start Num: 2

Candidate Starts for Dusty\_35:

(Start: 2 @15494 has 34 MA's), (4, 15521), (22, 15677), (37, 15830),

Gene: Engineer\_38 Start: 15711, Stop: 16091, Start Num: 2

Candidate Starts for Engineer\_38:

(Start: 2 @15711 has 34 MA's), (4, 15738), (5, 15771), (37, 16047),

Gene: GAL1\_11 Start: 8169, Stop: 8561, Start Num: 2

Candidate Starts for GAL1\_11:

(Start: 2 @8169 has 34 MA's), (6, 8238), (8, 8259), (11, 8274), (12, 8283), (13, 8292), (20, 8337), (23, 8355), (24, 8358), (26, 8403), (27, 8406), (28, 8415), (32, 8490), (34, 8502), (38, 8529), (39, 8535), (41, 8550),

Gene: Gompeii16\_17 Start: 13410, Stop: 13859, Start Num: 2

Candidate Starts for Gompeii16\_17:

(Start: 2 @13410 has 34 MA's), (4, 13434), (30, 13746), (42, 13821),

Gene: Graduation\_19 Start: 13675, Stop: 14124, Start Num: 2

Candidate Starts for Graduation\_19:

(Start: 2 @13675 has 34 MA's), (4, 13699), (30, 14011), (42, 14086),

Gene: IgnatiusPatJac\_16 Start: 12912, Stop: 13361, Start Num: 2

Candidate Starts for IgnatiusPatJac\_16:

(Start: 2 @12912 has 34 MA's), (4, 12936), (30, 13248), (42, 13323),

Gene: JonJames\_36 Start: 19608, Stop: 19994, Start Num: 2

Candidate Starts for JonJames\_36:

(Start: 2 @19608 has 34 MA's), (9, 19704), (19, 19779), (26, 19836), (35, 19935), (40, 19974),

Gene: Lozinak\_37 Start: 15766, Stop: 16146, Start Num: 2

Candidate Starts for Lozinak\_37:

(Start: 2 @15766 has 34 MA's), (4, 15793), (5, 15826), (37, 16102),

Gene: Miskis\_39 Start: 15529, Stop: 15909, Start Num: 2

Candidate Starts for Miskis\_39:

(Start: 2 @15529 has 34 MA's), (4, 15556), (5, 15589), (37, 15865),

Gene: Mollymur\_20 Start: 14083, Stop: 14469, Start Num: 2

Candidate Starts for Mollymur\_20:

(1, 13987), (Start: 2 @14083 has 34 MA's), (7, 14173), (12, 14203), (20, 14269),

Gene: Norvs\_38 Start: 15768, Stop: 16148, Start Num: 2

Candidate Starts for Norvs\_38:

(Start: 2 @15768 has 34 MA's), (4, 15795), (5, 15828), (37, 16104),

Gene: OneUp\_31 Start: 13478, Stop: 13864, Start Num: 2

Candidate Starts for OneUp\_31:

(Start: 2 @13478 has 34 MA's), (3, 13496), (19, 13649), (36, 13811), (37, 13817),

Gene: PacerPaul\_17 Start: 13148, Stop: 13597, Start Num: 2

Candidate Starts for PacerPaul\_17:

(Start: 2 @13148 has 34 MA's), (30, 13484), (42, 13559),

Gene: PhinkBoden\_37 Start: 16149, Stop: 16529, Start Num: 2

Candidate Starts for PhinkBoden\_37:

(Start: 2 @16149 has 34 MA's), (4, 16176), (5, 16209), (37, 16485),

Gene: Smoothie\_38 Start: 15766, Stop: 16146, Start Num: 2

Candidate Starts for Smoothie\_38:

(Start: 2 @15766 has 34 MA's), (4, 15793), (5, 15826), (37, 16102),

Gene: SpeedDemon\_200 Start: 13549, Stop: 13944, Start Num: 2

Candidate Starts for SpeedDemon\_200:

(Start: 2 @13549 has 34 MA's), (15, 13714), (18, 13738), (25, 13762),

Gene: StrongArm\_16 Start: 13900, Stop: 14349, Start Num: 2

Candidate Starts for StrongArm\_16:

(Start: 2 @13900 has 34 MA's), (4, 13924), (30, 14236), (42, 14311),

Gene: Toniann\_37 Start: 15711, Stop: 16091, Start Num: 2

Candidate Starts for Toniann\_37:

(Start: 2 @15711 has 34 MA's), (4, 15738), (5, 15771), (37, 16047),

Gene: Tripl3t\_18 Start: 13860, Stop: 14309, Start Num: 2

Candidate Starts for Tripl3t\_18:

(Start: 2 @13860 has 34 MA's), (4, 13884), (30, 14196), (42, 14271),

Gene: WilliamBoone\_37 Start: 15075, Stop: 15455, Start Num: 2  
Candidate Starts for WilliamBoone\_37:  
(Start: 2 @15075 has 34 MA's), (4, 15102), (22, 15258), (37, 15411),

Gene: Yvonnetastic\_34 Start: 17157, Stop: 17543, Start Num: 2  
Candidate Starts for Yvonnetastic\_34:  
(Start: 2 @17157 has 34 MA's), (9, 17253), (19, 17328), (26, 17385), (35, 17484), (40, 17523),