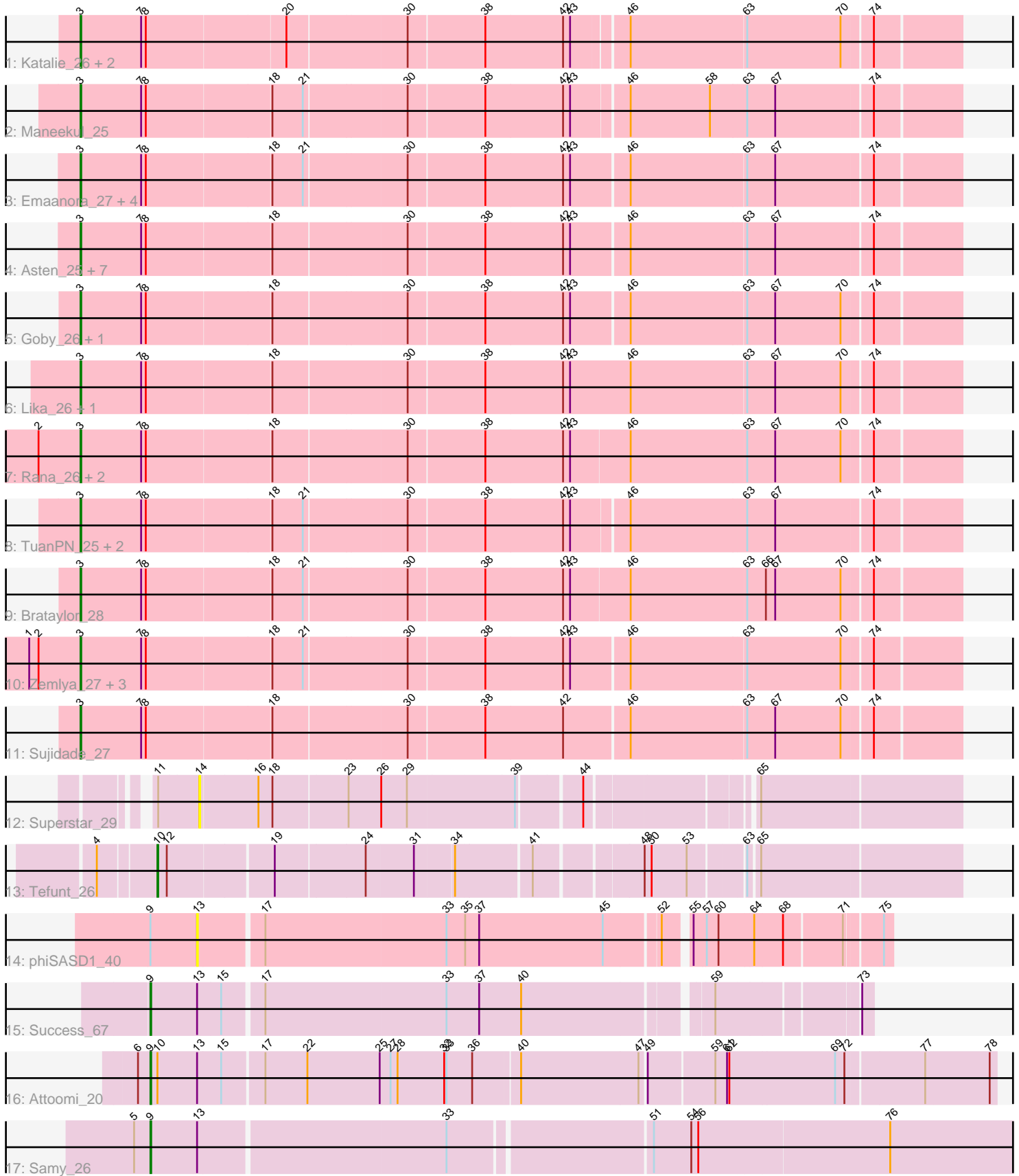


Pham 163741



Note: Tracks are now grouped by subcluster and scaled. Switching in subcluster is indicated by changes in track color. Track scale is now set by default to display the region 30 bp upstream of start 1 to 30 bp downstream of the last possible start. If this default region is judged to be packed too tightly with annotated starts, the track will be further scaled to only show that region of the ORF with annotated starts. This action will be indicated by adding "Zoomed" to the title. For starts, yellow indicates the location of called starts comprised solely of Glimmer/GeneMark auto-annotations, green indicates the location of called starts with at least 1 manual gene annotation.

Pham 163741 Report

This analysis was run 04/28/24 on database version 559.

WARNING: Pham size does not match number of genes in report. Either unphamerated genes have been added (by you) or starterator has removed genes due to invalid start codon.

Pham number 163741 has 39 members, 3 are drafts.

Phages represented in each track:

- Track 1 : Katalie_26, RedBear_27, South40_26
- Track 2 : Maneekul_25
- Track 3 : Emaanora_27, OzzyJ_26, Hippo_25, SarahRose_25, Dwayne_25
- Track 4 : Asten_25, TagePhighter_26, Triste_25, BarryBee_27, Snorlax_25, Whatever_25, Chucky_25, Werner_25
- Track 5 : Goby_26, Toma_26
- Track 6 : Lika_26, Godpower_27
- Track 7 : Rana_26, Lorelei_26, Nabi_26
- Track 8 : TuanPN_25, Yasdnii_25, Ejemplo_25
- Track 9 : Brataylor_28
- Track 10 : Zemlya_27, Danzina_27, Celeste_26, Dattran_27
- Track 11 : Sujidade_27
- Track 12 : Superstar_29
- Track 13 : Tefunt_26
- Track 14 : phiSASD1_40
- Track 15 : Success_67
- Track 16 : Attoomi_20
- Track 17 : Samy_26

Summary of Final Annotations (See graph section above for start numbers):

The start number called the most often in the published annotations is 3, it was called in 32 of the 36 non-draft genes in the pham.

Genes that call this "Most Annotated" start:

- Asten_25, BarryBee_27, Brataylor_28, Celeste_26, Chucky_25, Danzina_27, Dattran_27, Dwayne_25, Ejemplo_25, Emaanora_27, Goby_26, Godpower_27, Hippo_25, Katalie_26, Lika_26, Lorelei_26, Maneekul_25, Nabi_26, OzzyJ_26, Rana_26, RedBear_27, SarahRose_25, Snorlax_25, South40_26, Sujidade_27, TagePhighter_26, Toma_26, Triste_25, TuanPN_25, Werner_25, Whatever_25,

Yasdnii_25, Zemlya_27,

Genes that have the "Most Annotated" start but do not call it:

-

Genes that do not have the "Most Annotated" start:

- Attoomi_20, Samy_26, Success_67, Superstar_29, Tefunt_26, phiSASD1_40,

Summary by start number:

Start 3:

- Found in 33 of 39 (84.6%) of genes in pham
- Manual Annotations of this start: 32 of 36
- Called 100.0% of time when present
- Phage (with cluster) where this start called: Asten_25 (BD1), BarryBee_27 (BD1), Brataylor_28 (BD1), Celeste_26 (BD1), Chucky_25 (BD1), Danzina_27 (BD1), Dattran_27 (BD1), Dwayne_25 (BD1), Ejemplo_25 (BD1), Emaanora_27 (BD1), Goby_26 (BD1), Godpower_27 (BD1), Hippo_25 (BD1), Katalie_26 (BD1), Lika_26 (BD1), Lorelei_26 (BD1), Maneekul_25 (BD1), Nabi_26 (BD1), OzzyJ_26 (BD1), Rana_26 (BD1), RedBear_27 (BD1), SarahRose_25 (BD1), Snorlax_25 (BD1), South40_26 (BD1), Sujidade_27 (BD1), TagePhighter_26 (BD1), Toma_26 (BD1), Triste_25 (BD1), TuanPN_25 (BD1), Werner_25 (BD1), Whatever_25 (BD1), Yasdnii_25 (BD1), Zemlya_27 (BD1),

Start 9:

- Found in 4 of 39 (10.3%) of genes in pham
- Manual Annotations of this start: 3 of 36
- Called 75.0% of time when present
- Phage (with cluster) where this start called: Attoomi_20 (singleton), Samy_26 (singleton), Success_67 (singleton),

Start 10:

- Found in 2 of 39 (5.1%) of genes in pham
- Manual Annotations of this start: 1 of 36
- Called 50.0% of time when present
- Phage (with cluster) where this start called: Tefunt_26 (BD2),

Start 13:

- Found in 4 of 39 (10.3%) of genes in pham
- No Manual Annotations of this start.
- Called 25.0% of time when present
- Phage (with cluster) where this start called: phiSASD1_40 (BJ),

Start 14:

- Found in 1 of 39 (2.6%) of genes in pham
- No Manual Annotations of this start.
- Called 100.0% of time when present
- Phage (with cluster) where this start called: Superstar_29 (BD2),

Summary by clusters:

There are 4 clusters represented in this pham: singleton, BD1, BJ, BD2,

Info for manual annotations of cluster BD1:

- Start number 3 was manually annotated 32 times for cluster BD1.

Info for manual annotations of cluster BD2:

- Start number 10 was manually annotated 1 time for cluster BD2.

Gene Information:

Gene: Asten_25 Start: 21080, Stop: 22168, Start Num: 3

Candidate Starts for Asten_25:

(Start: 3 @21080 has 32 MA's), (7, 21158), (8, 21164), (18, 21320), (30, 21485), (38, 21581), (42, 21680), (43, 21689), (46, 21761), (63, 21905), (67, 21941), (74, 22061),

Gene: Attoomi_20 Start: 16925, Stop: 17971, Start Num: 9

Candidate Starts for Attoomi_20:

(6, 16910), (Start: 9 @16925 has 3 MA's), (Start: 10 @16934 has 1 MA's), (13, 16985), (15, 17015), (17, 17066), (22, 17120), (25, 17213), (27, 17225), (28, 17234), (32, 17294), (33, 17297), (36, 17330), (40, 17387), (47, 17537), (49, 17543), (59, 17624), (61, 17639), (62, 17642), (69, 17774), (72, 17786), (77, 17882), (78, 17963),

Gene: BarryBee_27 Start: 21090, Stop: 22178, Start Num: 3

Candidate Starts for BarryBee_27:

(Start: 3 @21090 has 32 MA's), (7, 21168), (8, 21174), (18, 21330), (30, 21495), (38, 21591), (42, 21690), (43, 21699), (46, 21771), (63, 21915), (67, 21951), (74, 22071),

Gene: Brataylor_28 Start: 22093, Stop: 23187, Start Num: 3

Candidate Starts for Brataylor_28:

(Start: 3 @22093 has 32 MA's), (7, 22171), (8, 22177), (18, 22333), (21, 22372), (30, 22498), (38, 22594), (42, 22693), (43, 22702), (46, 22777), (63, 22924), (66, 22948), (67, 22960), (70, 23044), (74, 23080),

Gene: Celeste_26 Start: 21546, Stop: 22634, Start Num: 3

Candidate Starts for Celeste_26:

(1, 21483), (2, 21495), (Start: 3 @21546 has 32 MA's), (7, 21624), (8, 21630), (18, 21786), (21, 21825), (30, 21951), (38, 22047), (42, 22146), (43, 22155), (46, 22227), (63, 22371), (70, 22491), (74, 22527),

Gene: Chucky_25 Start: 21094, Stop: 22182, Start Num: 3

Candidate Starts for Chucky_25:

(Start: 3 @21094 has 32 MA's), (7, 21172), (8, 21178), (18, 21334), (30, 21499), (38, 21595), (42, 21694), (43, 21703), (46, 21775), (63, 21919), (67, 21955), (74, 22075),

Gene: Danzina_27 Start: 21847, Stop: 22935, Start Num: 3

Candidate Starts for Danzina_27:

(1, 21784), (2, 21796), (Start: 3 @21847 has 32 MA's), (7, 21925), (8, 21931), (18, 22087), (21, 22126), (30, 22252), (38, 22348), (42, 22447), (43, 22456), (46, 22528), (63, 22672), (70, 22792), (74, 22828),

Gene: Dattran_27 Start: 21656, Stop: 22744, Start Num: 3

Candidate Starts for Dattran_27:

(1, 21593), (2, 21605), (Start: 3 @21656 has 32 MA's), (7, 21734), (8, 21740), (18, 21896), (21, 21935), (30, 22061), (38, 22157), (42, 22256), (43, 22265), (46, 22337), (63, 22481), (70, 22601), (74, 22637),

Gene: Dwayne_25 Start: 21081, Stop: 22169, Start Num: 3

Candidate Starts for Dwayne_25:

(Start: 3 @21081 has 32 MA's), (7, 21159), (8, 21165), (18, 21321), (21, 21360), (30, 21486), (38, 21582), (42, 21681), (43, 21690), (46, 21762), (63, 21906), (67, 21942), (74, 22062),

Gene: Ejemplo_25 Start: 21116, Stop: 22204, Start Num: 3

Candidate Starts for Ejemplo_25:

(Start: 3 @21116 has 32 MA's), (7, 21194), (8, 21200), (18, 21356), (21, 21395), (30, 21521), (38, 21617), (42, 21716), (43, 21725), (46, 21794), (63, 21941), (67, 21977), (74, 22097),

Gene: Emaanora_27 Start: 21039, Stop: 22127, Start Num: 3

Candidate Starts for Emaanora_27:

(Start: 3 @21039 has 32 MA's), (7, 21117), (8, 21123), (18, 21279), (21, 21318), (30, 21444), (38, 21540), (42, 21639), (43, 21648), (46, 21720), (63, 21864), (67, 21900), (74, 22020),

Gene: Goby_26 Start: 21661, Stop: 22749, Start Num: 3

Candidate Starts for Goby_26:

(Start: 3 @21661 has 32 MA's), (7, 21739), (8, 21745), (18, 21901), (30, 22066), (38, 22162), (42, 22261), (43, 22270), (46, 22342), (63, 22486), (67, 22522), (70, 22606), (74, 22642),

Gene: Godpower_27 Start: 21654, Stop: 22748, Start Num: 3

Candidate Starts for Godpower_27:

(Start: 3 @21654 has 32 MA's), (7, 21732), (8, 21738), (18, 21894), (30, 22059), (38, 22155), (42, 22254), (43, 22263), (46, 22341), (63, 22485), (67, 22521), (70, 22605), (74, 22641),

Gene: Hippo_25 Start: 21090, Stop: 22178, Start Num: 3

Candidate Starts for Hippo_25:

(Start: 3 @21090 has 32 MA's), (7, 21168), (8, 21174), (18, 21330), (21, 21369), (30, 21495), (38, 21591), (42, 21690), (43, 21699), (46, 21771), (63, 21915), (67, 21951), (74, 22071),

Gene: Katalie_26 Start: 21379, Stop: 22464, Start Num: 3

Candidate Starts for Katalie_26:

(Start: 3 @21379 has 32 MA's), (7, 21457), (8, 21463), (20, 21637), (30, 21784), (38, 21880), (42, 21979), (43, 21988), (46, 22054), (63, 22201), (70, 22321), (74, 22357),

Gene: Lika_26 Start: 21658, Stop: 22752, Start Num: 3

Candidate Starts for Lika_26:

(Start: 3 @21658 has 32 MA's), (7, 21736), (8, 21742), (18, 21898), (30, 22063), (38, 22159), (42, 22258), (43, 22267), (46, 22345), (63, 22489), (67, 22525), (70, 22609), (74, 22645),

Gene: Lorelei_26 Start: 21627, Stop: 22721, Start Num: 3

Candidate Starts for Lorelei_26:

(2, 21576), (Start: 3 @21627 has 32 MA's), (7, 21705), (8, 21711), (18, 21867), (30, 22032), (38, 22128), (42, 22227), (43, 22236), (46, 22311), (63, 22458), (67, 22494), (70, 22578), (74, 22614),

Gene: Maneekul_25 Start: 21115, Stop: 22203, Start Num: 3

Candidate Starts for Maneekul_25:

(Start: 3 @21115 has 32 MA's), (7, 21193), (8, 21199), (18, 21355), (21, 21394), (30, 21520), (38, 21616), (42, 21715), (43, 21724), (46, 21793), (58, 21895), (63, 21940), (67, 21976), (74, 22096),

Gene: Nabi_26 Start: 21627, Stop: 22721, Start Num: 3

Candidate Starts for Nabi_26:

(2, 21576), (Start: 3 @21627 has 32 MA's), (7, 21705), (8, 21711), (18, 21867), (30, 22032), (38, 22128), (42, 22227), (43, 22236), (46, 22311), (63, 22458), (67, 22494), (70, 22578), (74, 22614),

Gene: OzzyJ_26 Start: 21081, Stop: 22169, Start Num: 3

Candidate Starts for OzzyJ_26:

(Start: 3 @21081 has 32 MA's), (7, 21159), (8, 21165), (18, 21321), (21, 21360), (30, 21486), (38, 21582), (42, 21681), (43, 21690), (46, 21762), (63, 21906), (67, 21942), (74, 22062),

Gene: Rana_26 Start: 21627, Stop: 22721, Start Num: 3

Candidate Starts for Rana_26:

(2, 21576), (Start: 3 @21627 has 32 MA's), (7, 21705), (8, 21711), (18, 21867), (30, 22032), (38, 22128), (42, 22227), (43, 22236), (46, 22311), (63, 22458), (67, 22494), (70, 22578), (74, 22614),

Gene: RedBear_27 Start: 21379, Stop: 22464, Start Num: 3

Candidate Starts for RedBear_27:

(Start: 3 @21379 has 32 MA's), (7, 21457), (8, 21463), (20, 21637), (30, 21784), (38, 21880), (42, 21979), (43, 21988), (46, 22054), (63, 22201), (70, 22321), (74, 22357),

Gene: Samy_26 Start: 20532, Stop: 21713, Start Num: 9

Candidate Starts for Samy_26:

(5, 20511), (Start: 9 @20532 has 3 MA's), (13, 20592), (33, 20901), (51, 21147), (54, 21195), (56, 21204), (76, 21444),

Gene: SarahRose_25 Start: 21090, Stop: 22178, Start Num: 3

Candidate Starts for SarahRose_25:

(Start: 3 @21090 has 32 MA's), (7, 21168), (8, 21174), (18, 21330), (21, 21369), (30, 21495), (38, 21591), (42, 21690), (43, 21699), (46, 21771), (63, 21915), (67, 21951), (74, 22071),

Gene: Snorlax_25 Start: 21093, Stop: 22181, Start Num: 3

Candidate Starts for Snorlax_25:

(Start: 3 @21093 has 32 MA's), (7, 21171), (8, 21177), (18, 21333), (30, 21498), (38, 21594), (42, 21693), (43, 21702), (46, 21774), (63, 21918), (67, 21954), (74, 22074),

Gene: South40_26 Start: 21379, Stop: 22464, Start Num: 3

Candidate Starts for South40_26:

(Start: 3 @21379 has 32 MA's), (7, 21457), (8, 21463), (20, 21637), (30, 21784), (38, 21880), (42, 21979), (43, 21988), (46, 22054), (63, 22201), (70, 22321), (74, 22357),

Gene: Success_67 Start: 44240, Stop: 45103, Start Num: 9

Candidate Starts for Success_67:

(Start: 9 @44240 has 3 MA's), (13, 44300), (15, 44330), (17, 44378), (33, 44609), (37, 44651), (40, 44705), (59, 44924), (73, 45089),

Gene: Sujidade_27 Start: 21949, Stop: 23037, Start Num: 3

Candidate Starts for Sujidade_27:

(Start: 3 @21949 has 32 MA's), (7, 22027), (8, 22033), (18, 22189), (30, 22354), (38, 22450), (42, 22549), (46, 22630), (63, 22774), (67, 22810), (70, 22894), (74, 22930),

Gene: Superstar_29 Start: 22840, Stop: 23736, Start Num: 14

Candidate Starts for Superstar_29:

(11, 22789), (14, 22840), (16, 22912), (18, 22927), (23, 23017), (26, 23059), (29, 23092), (39, 23224), (44, 23296), (65, 23485),

Gene: TagePighter_26 Start: 21093, Stop: 22181, Start Num: 3

Candidate Starts for TagePighter_26:

(Start: 3 @21093 has 32 MA's), (7, 21171), (8, 21177), (18, 21333), (30, 21498), (38, 21594), (42, 21693), (43, 21702), (46, 21774), (63, 21918), (67, 21954), (74, 22074),

Gene: Tefunt_26 Start: 21591, Stop: 22544, Start Num: 10

Candidate Starts for Tefunt_26:

(4, 21522), (Start: 10 @21591 has 1 MA's), (12, 21603), (19, 21732), (24, 21843), (31, 21903), (34, 21951), (41, 22041), (48, 22164), (50, 22173), (53, 22218), (63, 22281), (65, 22293),

Gene: Toma_26 Start: 21661, Stop: 22749, Start Num: 3

Candidate Starts for Toma_26:

(Start: 3 @21661 has 32 MA's), (7, 21739), (8, 21745), (18, 21901), (30, 22066), (38, 22162), (42, 22261), (43, 22270), (46, 22342), (63, 22486), (67, 22522), (70, 22606), (74, 22642),

Gene: Triste_25 Start: 21081, Stop: 22169, Start Num: 3

Candidate Starts for Triste_25:

(Start: 3 @21081 has 32 MA's), (7, 21159), (8, 21165), (18, 21321), (30, 21486), (38, 21582), (42, 21681), (43, 21690), (46, 21762), (63, 21906), (67, 21942), (74, 22062),

Gene: TuanPN_25 Start: 21116, Stop: 22204, Start Num: 3

Candidate Starts for TuanPN_25:

(Start: 3 @21116 has 32 MA's), (7, 21194), (8, 21200), (18, 21356), (21, 21395), (30, 21521), (38, 21617), (42, 21716), (43, 21725), (46, 21794), (63, 21941), (67, 21977), (74, 22097),

Gene: Werner_25 Start: 21091, Stop: 22179, Start Num: 3

Candidate Starts for Werner_25:

(Start: 3 @21091 has 32 MA's), (7, 21169), (8, 21175), (18, 21331), (30, 21496), (38, 21592), (42, 21691), (43, 21700), (46, 21772), (63, 21916), (67, 21952), (74, 22072),

Gene: Whatever_25 Start: 21091, Stop: 22179, Start Num: 3

Candidate Starts for Whatever_25:

(Start: 3 @21091 has 32 MA's), (7, 21169), (8, 21175), (18, 21331), (30, 21496), (38, 21592), (42, 21691), (43, 21700), (46, 21772), (63, 21916), (67, 21952), (74, 22072),

Gene: Yasdnil_25 Start: 21112, Stop: 22200, Start Num: 3

Candidate Starts for Yasdnil_25:

(Start: 3 @21112 has 32 MA's), (7, 21190), (8, 21196), (18, 21352), (21, 21391), (30, 21517), (38, 21613), (42, 21712), (43, 21721), (46, 21790), (63, 21937), (67, 21973), (74, 22093),

Gene: Zemlya_27 Start: 21653, Stop: 22741, Start Num: 3

Candidate Starts for Zemlya_27:

(1, 21590), (2, 21602), (Start: 3 @21653 has 32 MA's), (7, 21731), (8, 21737), (18, 21893), (21, 21932), (30, 22058), (38, 22154), (42, 22253), (43, 22262), (46, 22334), (63, 22478), (70, 22598), (74, 22634),

Gene: phiSASD1_40 Start: 16596, Stop: 17432, Start Num: 13

Candidate Starts for phiSASD1_40:

(Start: 9 @16536 has 3 MA's), (13, 16596), (17, 16674), (33, 16905), (35, 16929), (37, 16947), (45, 17106), (52, 17172), (55, 17199), (57, 17214), (60, 17229), (64, 17271), (68, 17307), (71, 17379), (75,

17421),