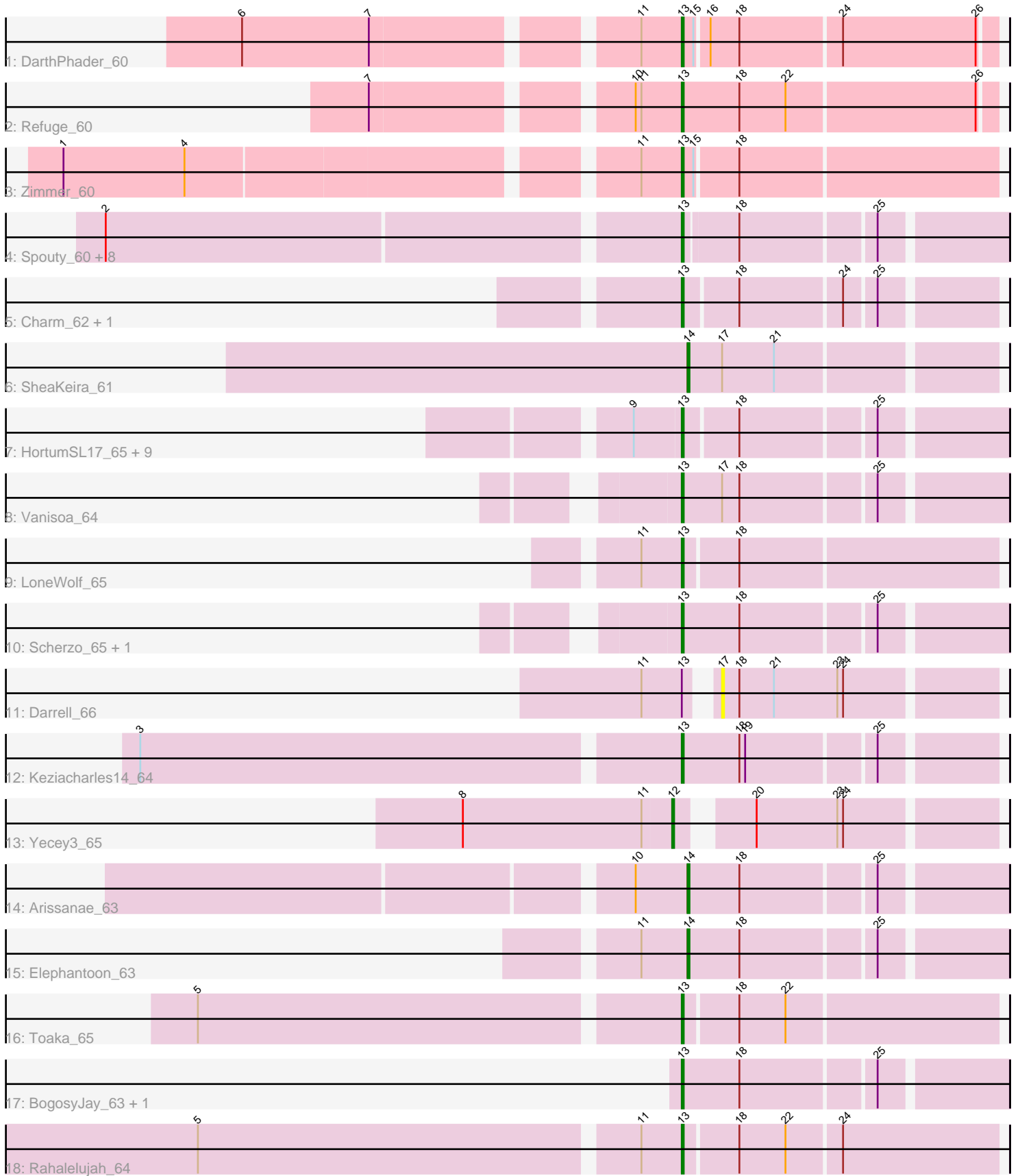


Pham 163753



Note: Tracks are now grouped by subcluster and scaled. Switching in subcluster is indicated by changes in track color. Track scale is now set by default to display the region 30 bp upstream of start 1 to 30 bp downstream of the last possible start. If this default region is judged to be packed too tightly with annotated starts, the track will be further scaled to only show that region of the ORF with annotated starts. This action will be indicated by adding "Zoomed" to the title. For starts, yellow indicates the location of called starts comprised solely of Glimmer/GeneMark auto-annotations, green indicates the location of called starts with at least 1 manual gene annotation.

Pham 163753 Report

This analysis was run 04/28/24 on database version 559.

Pham number 163753 has 38 members, 3 are drafts.

Phages represented in each track:

- Track 1 : DarthPhader_60
- Track 2 : Refuge_60
- Track 3 : Zimmer_60
- Track 4 : Spouty_60, Qobbit_63, ExplosioNervosa_63, Eidsmoe_63, Conquerage_63, Alma_63, Fayely_63, Priya_63, EmyBug_59
- Track 5 : Charm_62, DreamTeam1_62
- Track 6 : SheaKeira_61
- Track 7 : HortumSL17_65, Tubs_64, PackMan_63, Aliter_65, Phonnegut_65, Phaeder_64, Pioneer_65, Myxus_64, Catalina_66, Beemo_65
- Track 8 : Vanisoa_64
- Track 9 : LoneWolf_65
- Track 10 : Scherzo_65, Ugenie5_61
- Track 11 : Darrell_66
- Track 12 : Keziacharles14_64
- Track 13 : Yecey3_65
- Track 14 : Arissanae_63
- Track 15 : Elephantoon_63
- Track 16 : Toaka_65
- Track 17 : BogosyJay_63, Maminiaiina_63
- Track 18 : Rahalelujah_64

Summary of Final Annotations (See graph section above for start numbers):

The start number called the most often in the published annotations is 13, it was called in 31 of the 35 non-draft genes in the pham.

Genes that call this "Most Annotated" start:

- Aliter_65, Alma_63, Beemo_65, BogosyJay_63, Catalina_66, Charm_62, Conquerage_63, DarthPhader_60, DreamTeam1_62, Eidsmoe_63, EmyBug_59, ExplosioNervosa_63, Fayely_63, HortumSL17_65, Keziacharles14_64, LoneWolf_65, Maminiaiina_63, Myxus_64, PackMan_63, Phaeder_64, Phonnegut_65, Pioneer_65, Priya_63, Qobbit_63, Rahalelujah_64, Refuge_60, Scherzo_65, Spouty_60, Toaka_65, Tubs_64, Ugenie5_61, Vanisoa_64, Zimmer_60,

Genes that have the "Most Annotated" start but do not call it:

- Darrell_66,

Genes that do not have the "Most Annotated" start:

- Arissanae_63, Elephantoon_63, SheaKeira_61, Yecey3_65,

Summary by start number:

Start 12:

- Found in 1 of 38 (2.6%) of genes in pham
- Manual Annotations of this start: 1 of 35
- Called 100.0% of time when present
- Phage (with cluster) where this start called: Yecey3_65 (A9),

Start 13:

- Found in 34 of 38 (89.5%) of genes in pham
- Manual Annotations of this start: 31 of 35
- Called 97.1% of time when present
- Phage (with cluster) where this start called: Aliter_65 (A9), Alma_63 (A9), Beemo_65 (A9), BogosyJay_63 (A9), Catalina_66 (A9), Charm_62 (A9), Conquerage_63 (A9), DARTHPhader_60 (A12), DreamTeam1_62 (A9), Eidsmoe_63 (A9), EmyBug_59 (A9), ExplosioNervosa_63 (A9), Fayely_63 (A9), HortumSL17_65 (A9), Keziacharles14_64 (A9), LoneWolf_65 (A9), Maminiaina_63 (A9), Myxus_64 (A9), PackMan_63 (A9), Phaeder_64 (A9), Phonnegut_65 (A9), Pioneer_65 (A9), Priya_63 (A9), Qobbit_63 (A9), Rahalelujah_64 (A9), Refuge_60 (A12), Scherzo_65 (A9), Spouty_60 (A9), Toaka_65 (A9), Tubs_64 (A9), Ugenie5_61 (A9), Vanisoa_64 (A9), Zimmer_60 (A12),

Start 14:

- Found in 3 of 38 (7.9%) of genes in pham
- Manual Annotations of this start: 3 of 35
- Called 100.0% of time when present
- Phage (with cluster) where this start called: Arissanae_63 (A9), Elephantoon_63 (A9), SheaKeira_61 (A9),

Start 17:

- Found in 3 of 38 (7.9%) of genes in pham
- No Manual Annotations of this start.
- Called 33.3% of time when present
- Phage (with cluster) where this start called: Darrell_66 (A9),

Summary by clusters:

There are 2 clusters represented in this pham: A9, A12,

Info for manual annotations of cluster A12:

- Start number 13 was manually annotated 3 times for cluster A12.

Info for manual annotations of cluster A9:

- Start number 12 was manually annotated 1 time for cluster A9.
- Start number 13 was manually annotated 28 times for cluster A9.
- Start number 14 was manually annotated 3 times for cluster A9.

Gene Information:

Gene: Aliter_65 Start: 40065, Stop: 39910, Start Num: 13

Candidate Starts for Aliter_65:

(9, 40089), (Start: 13 @40065 has 31 MA's), (18, 40038), (25, 39972),

Gene: Alma_63 Start: 40097, Stop: 39942, Start Num: 13

Candidate Starts for Alma_63:

(2, 40385), (Start: 13 @40097 has 31 MA's), (18, 40070), (25, 40004),

Gene: Arissanae_63 Start: 40631, Stop: 40476, Start Num: 14

Candidate Starts for Arissanae_63:

(10, 40658), (Start: 14 @40631 has 3 MA's), (18, 40604), (25, 40538),

Gene: Beemo_65 Start: 40235, Stop: 40080, Start Num: 13

Candidate Starts for Beemo_65:

(9, 40259), (Start: 13 @40235 has 31 MA's), (18, 40208), (25, 40142),

Gene: BogosyJay_63 Start: 40035, Stop: 39877, Start Num: 13

Candidate Starts for BogosyJay_63:

(Start: 13 @40035 has 31 MA's), (18, 40005), (25, 39939),

Gene: Catalina_66 Start: 40138, Stop: 39983, Start Num: 13

Candidate Starts for Catalina_66:

(9, 40162), (Start: 13 @40138 has 31 MA's), (18, 40111), (25, 40045),

Gene: Charm_62 Start: 39763, Stop: 39614, Start Num: 13

Candidate Starts for Charm_62:

(Start: 13 @39763 has 31 MA's), (18, 39736), (24, 39685), (25, 39670),

Gene: Conquerage_63 Start: 39866, Stop: 39711, Start Num: 13

Candidate Starts for Conquerage_63:

(2, 40154), (Start: 13 @39866 has 31 MA's), (18, 39839), (25, 39773),

Gene: Darrell_66 Start: 40694, Stop: 40557, Start Num: 17

Candidate Starts for Darrell_66:

(11, 40724), (Start: 13 @40703 has 31 MA's), (17, 40694), (18, 40685), (21, 40667), (23, 40634), (24, 40631),

Gene: DarthPhader_60 Start: 40985, Stop: 40830, Start Num: 13

Candidate Starts for DarthPhader_60:

(6, 41195), (7, 41129), (11, 41006), (Start: 13 @40985 has 31 MA's), (15, 40979), (16, 40973), (18, 40958), (24, 40907), (26, 40838),

Gene: DreamTeam1_62 Start: 39595, Stop: 39446, Start Num: 13

Candidate Starts for DreamTeam1_62:

(Start: 13 @39595 has 31 MA's), (18, 39568), (24, 39517), (25, 39502),

Gene: Eidsmoe_63 Start: 39858, Stop: 39703, Start Num: 13

Candidate Starts for Eidsmoe_63:

(2, 40146), (Start: 13 @39858 has 31 MA's), (18, 39831), (25, 39765),

Gene: Elephantoon_63 Start: 39445, Stop: 39290, Start Num: 14
Candidate Starts for Elephantoon_63:
(11, 39469), (Start: 14 @39445 has 3 MA's), (18, 39418), (25, 39352),

Gene: EmyBug_59 Start: 39860, Stop: 39705, Start Num: 13
Candidate Starts for EmyBug_59:
(2, 40148), (Start: 13 @39860 has 31 MA's), (18, 39833), (25, 39767),

Gene: ExplosioNervosa_63 Start: 39926, Stop: 39771, Start Num: 13
Candidate Starts for ExplosioNervosa_63:
(2, 40214), (Start: 13 @39926 has 31 MA's), (18, 39899), (25, 39833),

Gene: Fayely_63 Start: 39827, Stop: 39672, Start Num: 13
Candidate Starts for Fayely_63:
(2, 40115), (Start: 13 @39827 has 31 MA's), (18, 39800), (25, 39734),

Gene: HortumSL17_65 Start: 40137, Stop: 39982, Start Num: 13
Candidate Starts for HortumSL17_65:
(9, 40161), (Start: 13 @40137 has 31 MA's), (18, 40110), (25, 40044),

Gene: Keziacharles14_64 Start: 41212, Stop: 41060, Start Num: 13
Candidate Starts for Keziacharles14_64:
(3, 41485), (Start: 13 @41212 has 31 MA's), (18, 41182), (19, 41179), (25, 41116),

Gene: LoneWolf_65 Start: 40176, Stop: 40018, Start Num: 13
Candidate Starts for LoneWolf_65:
(11, 40197), (Start: 13 @40176 has 31 MA's), (18, 40149),

Gene: Maminiaina_63 Start: 40017, Stop: 39859, Start Num: 13
Candidate Starts for Maminiaina_63:
(Start: 13 @40017 has 31 MA's), (18, 39987), (25, 39921),

Gene: Myxus_64 Start: 40137, Stop: 39982, Start Num: 13
Candidate Starts for Myxus_64:
(9, 40161), (Start: 13 @40137 has 31 MA's), (18, 40110), (25, 40044),

Gene: PackMan_63 Start: 40012, Stop: 39857, Start Num: 13
Candidate Starts for PackMan_63:
(9, 40036), (Start: 13 @40012 has 31 MA's), (18, 39985), (25, 39919),

Gene: Phaeder_64 Start: 40012, Stop: 39857, Start Num: 13
Candidate Starts for Phaeder_64:
(9, 40036), (Start: 13 @40012 has 31 MA's), (18, 39985), (25, 39919),

Gene: Phonnegut_65 Start: 40234, Stop: 40079, Start Num: 13
Candidate Starts for Phonnegut_65:
(9, 40258), (Start: 13 @40234 has 31 MA's), (18, 40207), (25, 40141),

Gene: Pioneer_65 Start: 40234, Stop: 40079, Start Num: 13
Candidate Starts for Pioneer_65:
(9, 40258), (Start: 13 @40234 has 31 MA's), (18, 40207), (25, 40141),

Gene: Priya_63 Start: 39861, Stop: 39706, Start Num: 13
Candidate Starts for Priya_63:
(2, 40149), (Start: 13 @39861 has 31 MA's), (18, 39834), (25, 39768),

Gene: Qobbit_63 Start: 39823, Stop: 39668, Start Num: 13
Candidate Starts for Qobbit_63:
(2, 40111), (Start: 13 @39823 has 31 MA's), (18, 39796), (25, 39730),

Gene: Rahalelujah_64 Start: 39776, Stop: 39618, Start Num: 13
Candidate Starts for Rahalelujah_64:
(5, 40019), (11, 39797), (Start: 13 @39776 has 31 MA's), (18, 39749), (22, 39725), (24, 39698),

Gene: Refuge_60 Start: 41000, Stop: 40842, Start Num: 13
Candidate Starts for Refuge_60:
(7, 41144), (10, 41024), (11, 41021), (Start: 13 @41000 has 31 MA's), (18, 40970), (22, 40946), (26, 40850),

Gene: Scherzo_65 Start: 40426, Stop: 40268, Start Num: 13
Candidate Starts for Scherzo_65:
(Start: 13 @40426 has 31 MA's), (18, 40396), (25, 40330),

Gene: SheaKeira_61 Start: 39614, Stop: 39462, Start Num: 14
Candidate Starts for SheaKeira_61:
(Start: 14 @39614 has 3 MA's), (17, 39596), (21, 39569),

Gene: Spouty_60 Start: 39860, Stop: 39705, Start Num: 13
Candidate Starts for Spouty_60:
(2, 40148), (Start: 13 @39860 has 31 MA's), (18, 39833), (25, 39767),

Gene: Toaka_65 Start: 40248, Stop: 40090, Start Num: 13
Candidate Starts for Toaka_65:
(5, 40491), (Start: 13 @40248 has 31 MA's), (18, 40221), (22, 40197),

Gene: Tubs_64 Start: 40012, Stop: 39857, Start Num: 13
Candidate Starts for Tubs_64:
(9, 40036), (Start: 13 @40012 has 31 MA's), (18, 39985), (25, 39919),

Gene: Ugenie5_61 Start: 40425, Stop: 40267, Start Num: 13
Candidate Starts for Ugenie5_61:
(Start: 13 @40425 has 31 MA's), (18, 40395), (25, 40329),

Gene: Vanisoa_64 Start: 41119, Stop: 40961, Start Num: 13
Candidate Starts for Vanisoa_64:
(Start: 13 @41119 has 31 MA's), (17, 41098), (18, 41089), (25, 41023),

Gene: Yecey3_65 Start: 40008, Stop: 39859, Start Num: 12
Candidate Starts for Yecey3_65:
(8, 40116), (11, 40023), (Start: 12 @40008 has 1 MA's), (20, 39978), (23, 39936), (24, 39933),

Gene: Zimmer_60 Start: 40828, Stop: 40670, Start Num: 13
Candidate Starts for Zimmer_60:
(1, 41128), (4, 41065), (11, 40849), (Start: 13 @40828 has 31 MA's), (15, 40822), (18, 40801),