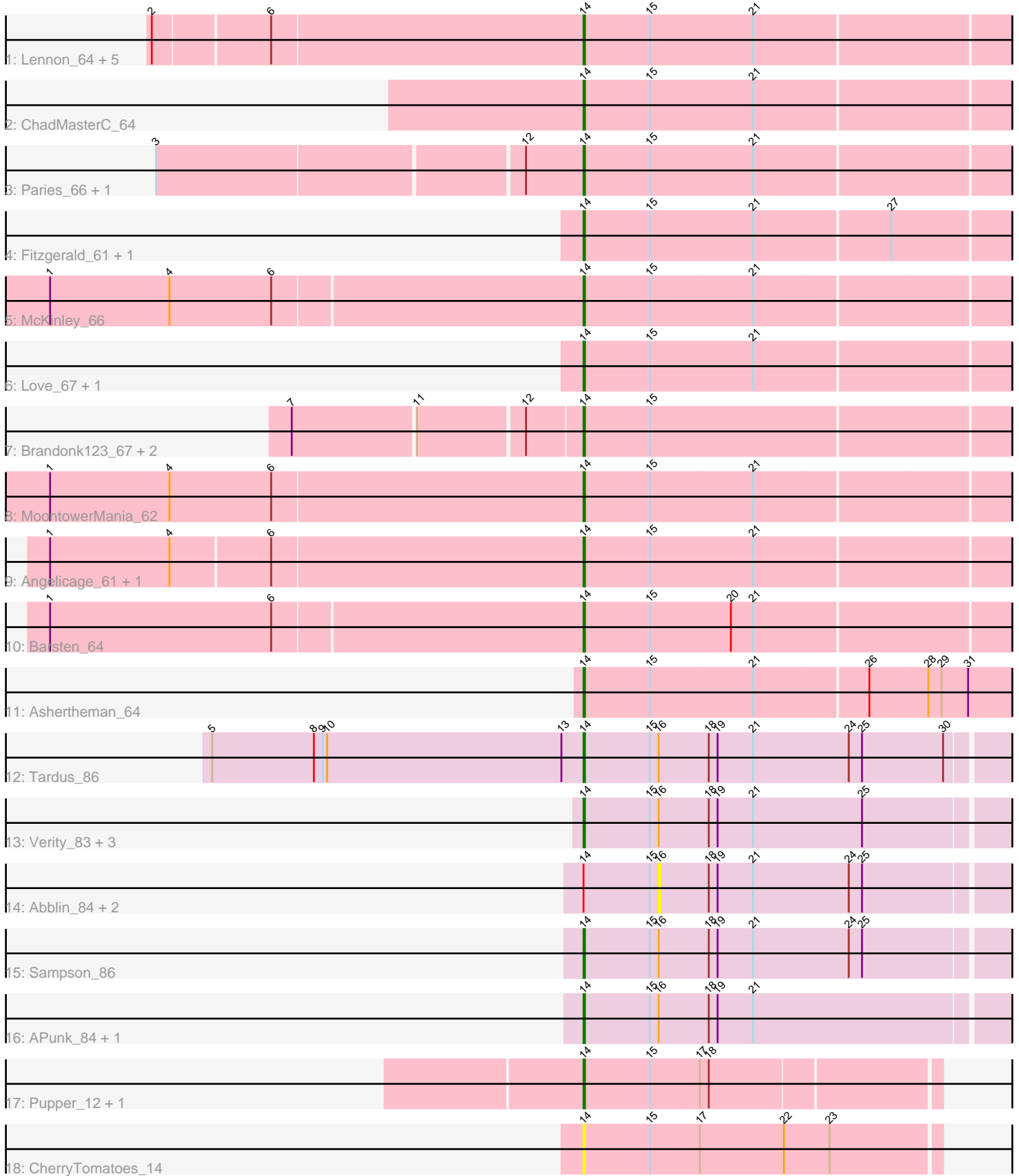


# Pham 163779



Note: Tracks are now grouped by subcluster and scaled. Switching in subcluster is indicated by changes in track color. Track scale is now set by default to display the region 30 bp upstream of start 1 to 30 bp downstream of the last possible start. If this default region is judged to be packed too tightly with annotated starts, the track will be further scaled to only show that region of the ORF with annotated starts. This action will be indicated by adding "Zoomed" to the title. For starts, yellow indicates the location of called starts comprised solely of Glimmer/GeneMark auto-annotations, green indicates the location of called starts with at least 1 manual gene annotation.

## Pham 163779 Report

This analysis was run 04/28/24 on database version 559.

Pham number 163779 has 36 members, 6 are drafts.

Phages represented in each track:

- Track 1 : Lennon\_64, Geodirt\_63, Sitar\_64, Keitabear\_63, Stultus\_60, Kewpiedoll\_63
- Track 2 : ChadMasterC\_64
- Track 3 : Paries\_66, Galadriel\_63
- Track 4 : Fitzgerald\_61, Jabberwocky\_61
- Track 5 : McKinley\_66
- Track 6 : Love\_67, Sedona\_63
- Track 7 : Brandonk123\_67, Kamashten\_62, Thing3\_62
- Track 8 : MoontowerMania\_62
- Track 9 : Angelicage\_61, Shivanishola\_61
- Track 10 : Barsten\_64
- Track 11 : Ashertheman\_64
- Track 12 : Tardus\_86
- Track 13 : Verity\_83, Delrey21\_84, DoctorFroggo\_84, Zipp\_84
- Track 14 : Abblin\_84, Natkenzie\_84, Scioto\_84
- Track 15 : Sampson\_86
- Track 16 : APunk\_84, Zitch\_86
- Track 17 : Pupper\_12, SCentae\_12
- Track 18 : CherryTomatoes\_14

### ***Summary of Final Annotations (See graph section above for start numbers):***

The start number called the most often in the published annotations is 14, it was called in 30 of the 30 non-draft genes in the pham.

Genes that call this "Most Annotated" start:

- APunk\_84, Angelicage\_61, Ashertheman\_64, Barsten\_64, Brandonk123\_67, ChadMasterC\_64, CherryTomatoes\_14, Delrey21\_84, DoctorFroggo\_84, Fitzgerald\_61, Galadriel\_63, Geodirt\_63, Jabberwocky\_61, Kamashten\_62, Keitabear\_63, Kewpiedoll\_63, Lennon\_64, Love\_67, McKinley\_66, MoontowerMania\_62, Paries\_66, Pupper\_12, SCentae\_12, Sampson\_86, Sedona\_63, Shivanishola\_61, Sitar\_64, Stultus\_60, Tardus\_86, Thing3\_62, Verity\_83, Zipp\_84, Zitch\_86,

Genes that have the "Most Annotated" start but do not call it:

- Abblin\_84, Natkenzie\_84, Scioto\_84,

Genes that do not have the "Most Annotated" start:

- 

### **Summary by start number:**

Start 14:

- Found in 36 of 36 ( 100.0% ) of genes in pham
- Manual Annotations of this start: 30 of 30
- Called 91.7% of time when present
- Phage (with cluster) where this start called: APunk\_84 (DE4), Angelicage\_61 (DE1), Ashertheman\_64 (DE1), Barsten\_64 (DE1), Brandonk123\_67 (DE1), ChadMasterC\_64 (DE1), CherryTomatoes\_14 (DO), Delrey21\_84 (DE4), DoctorFroggo\_84 (DE4), Fitzgerald\_61 (DE1), Galadriel\_63 (DE1), Geodirt\_63 (DE1), Jabberwocky\_61 (DE1), Kamashten\_62 (DE1), Keitabear\_63 (DE1), Kewpiedoll\_63 (DE1), Lennon\_64 (DE1), Love\_67 (DE1), McKinley\_66 (DE1), MoontowerMania\_62 (DE1), Paries\_66 (DE1), Pupper\_12 (DO), SCentae\_12 (DO), Sampson\_86 (DE4), Sedona\_63 (DE1), Shivanishola\_61 (DE1), Sitar\_64 (DE1), Stultus\_60 (DE1), Tardus\_86 (DE4), Thing3\_62 (DE1), Verity\_83 (DE4), Zipp\_84 (DE4), Zitch\_86 (DE4),

Start 16:

- Found in 11 of 36 ( 30.6% ) of genes in pham
- No Manual Annotations of this start.
- Called 27.3% of time when present
- Phage (with cluster) where this start called: Abblin\_84 (DE4), Natkenzie\_84 (DE4), Scioto\_84 (DE4),

### **Summary by clusters:**

There are 3 clusters represented in this pham: DO, DE4, DE1,

Info for manual annotations of cluster DE1:

- Start number 14 was manually annotated 20 times for cluster DE1.

Info for manual annotations of cluster DE4:

- Start number 14 was manually annotated 8 times for cluster DE4.

Info for manual annotations of cluster DO:

- Start number 14 was manually annotated 2 times for cluster DO.

### **Gene Information:**

Gene: APunk\_84 Start: 57342, Stop: 57623, Start Num: 14

Candidate Starts for APunk\_84:

(Start: 14 @57342 has 30 MA's), (15, 57387), (16, 57393), (18, 57426), (19, 57432), (21, 57456),

Gene: Abblin\_84 Start: 57551, Stop: 57781, Start Num: 16

Candidate Starts for Abblin\_84:

(Start: 14 @57500 has 30 MA's), (15, 57545), (16, 57551), (18, 57584), (19, 57590), (21, 57614), (24, 57677), (25, 57686),

Gene: Angelicage\_61 Start: 49989, Stop: 50273, Start Num: 14

Candidate Starts for Angelicage\_61:

(1, 49632), (4, 49713), (6, 49779), (Start: 14 @49989 has 30 MA's), (15, 50034), (21, 50103),

Gene: Ashertheman\_64 Start: 49167, Stop: 49451, Start Num: 14

Candidate Starts for Ashertheman\_64:

(Start: 14 @49167 has 30 MA's), (15, 49212), (21, 49281), (26, 49356), (28, 49395), (29, 49404), (31, 49422),

Gene: Barsten\_64 Start: 50125, Stop: 50409, Start Num: 14

Candidate Starts for Barsten\_64:

(1, 49768), (6, 49918), (Start: 14 @50125 has 30 MA's), (15, 50170), (20, 50224), (21, 50239),

Gene: Brandonk123\_67 Start: 49918, Stop: 50202, Start Num: 14

Candidate Starts for Brandonk123\_67:

(7, 49735), (11, 49816), (12, 49885), (Start: 14 @49918 has 30 MA's), (15, 49963),

Gene: ChadMasterC\_64 Start: 51638, Stop: 51922, Start Num: 14

Candidate Starts for ChadMasterC\_64:

(Start: 14 @51638 has 30 MA's), (15, 51683), (21, 51752),

Gene: CherryTomatoes\_14 Start: 4328, Stop: 4564, Start Num: 14

Candidate Starts for CherryTomatoes\_14:

(Start: 14 @4328 has 30 MA's), (15, 4373), (17, 4406), (22, 4463), (23, 4493),

Gene: Delrey21\_84 Start: 58911, Stop: 59192, Start Num: 14

Candidate Starts for Delrey21\_84:

(Start: 14 @58911 has 30 MA's), (15, 58956), (16, 58962), (18, 58995), (19, 59001), (21, 59025), (25, 59097),

Gene: DoctorFroggo\_84 Start: 58911, Stop: 59192, Start Num: 14

Candidate Starts for DoctorFroggo\_84:

(Start: 14 @58911 has 30 MA's), (15, 58956), (16, 58962), (18, 58995), (19, 59001), (21, 59025), (25, 59097),

Gene: Fitzgerald\_61 Start: 50359, Stop: 50643, Start Num: 14

Candidate Starts for Fitzgerald\_61:

(Start: 14 @50359 has 30 MA's), (15, 50404), (21, 50473), (27, 50563),

Gene: Galadriel\_63 Start: 50552, Stop: 50836, Start Num: 14

Candidate Starts for Galadriel\_63:

(3, 50273), (12, 50513), (Start: 14 @50552 has 30 MA's), (15, 50597), (21, 50666),

Gene: Geodirt\_63 Start: 50703, Stop: 50987, Start Num: 14

Candidate Starts for Geodirt\_63:

(2, 50418), (6, 50493), (Start: 14 @50703 has 30 MA's), (15, 50748), (21, 50817),

Gene: Jabberwocky\_61 Start: 50593, Stop: 50877, Start Num: 14

Candidate Starts for Jabberwocky\_61:

(Start: 14 @50593 has 30 MA's), (15, 50638), (21, 50707), (27, 50797),

Gene: Kamashten\_62 Start: 49351, Stop: 49635, Start Num: 14

Candidate Starts for Kamashten\_62:

(7, 49168), (11, 49249), (12, 49318), (Start: 14 @49351 has 30 MA's), (15, 49396),

Gene: Keitabear\_63 Start: 51257, Stop: 51541, Start Num: 14

Candidate Starts for Keitabear\_63:

(2, 50972), (6, 51047), (Start: 14 @51257 has 30 MA's), (15, 51302), (21, 51371),

Gene: Kewpiedoll\_63 Start: 50615, Stop: 50899, Start Num: 14

Candidate Starts for Kewpiedoll\_63:

(2, 50330), (6, 50405), (Start: 14 @50615 has 30 MA's), (15, 50660), (21, 50729),

Gene: Lennon\_64 Start: 51406, Stop: 51690, Start Num: 14

Candidate Starts for Lennon\_64:

(2, 51121), (6, 51196), (Start: 14 @51406 has 30 MA's), (15, 51451), (21, 51520),

Gene: Love\_67 Start: 50477, Stop: 50761, Start Num: 14

Candidate Starts for Love\_67:

(Start: 14 @50477 has 30 MA's), (15, 50522), (21, 50591),

Gene: McKinley\_66 Start: 50477, Stop: 50761, Start Num: 14

Candidate Starts for McKinley\_66:

(1, 50120), (4, 50201), (6, 50270), (Start: 14 @50477 has 30 MA's), (15, 50522), (21, 50591),

Gene: MoontowerMania\_62 Start: 50638, Stop: 50922, Start Num: 14

Candidate Starts for MoontowerMania\_62:

(1, 50278), (4, 50359), (6, 50428), (Start: 14 @50638 has 30 MA's), (15, 50683), (21, 50752),

Gene: Natkenzie\_84 Start: 57551, Stop: 57781, Start Num: 16

Candidate Starts for Natkenzie\_84:

(Start: 14 @57500 has 30 MA's), (15, 57545), (16, 57551), (18, 57584), (19, 57590), (21, 57614), (24, 57677), (25, 57686),

Gene: Paries\_66 Start: 50738, Stop: 51022, Start Num: 14

Candidate Starts for Paries\_66:

(3, 50459), (12, 50699), (Start: 14 @50738 has 30 MA's), (15, 50783), (21, 50852),

Gene: Pupper\_12 Start: 4107, Stop: 4337, Start Num: 14

Candidate Starts for Pupper\_12:

(Start: 14 @4107 has 30 MA's), (15, 4152), (17, 4185), (18, 4191),

Gene: SCentae\_12 Start: 4106, Stop: 4336, Start Num: 14

Candidate Starts for SCentae\_12:

(Start: 14 @4106 has 30 MA's), (15, 4151), (17, 4184), (18, 4190),

Gene: Sampson\_86 Start: 57651, Stop: 57932, Start Num: 14

Candidate Starts for Sampson\_86:

(Start: 14 @57651 has 30 MA's), (15, 57696), (16, 57702), (18, 57735), (19, 57741), (21, 57765), (24, 57828), (25, 57837),

Gene: Scioto\_84 Start: 57552, Stop: 57782, Start Num: 16

Candidate Starts for Scioto\_84:

(Start: 14 @57501 has 30 MA's), (15, 57546), (16, 57552), (18, 57585), (19, 57591), (21, 57615), (24, 57678), (25, 57687),

Gene: Sedona\_63 Start: 51205, Stop: 51489, Start Num: 14

Candidate Starts for Sedona\_63:

(Start: 14 @51205 has 30 MA's), (15, 51250), (21, 51319),

Gene: Shivanishola\_61 Start: 48244, Stop: 48528, Start Num: 14

Candidate Starts for Shivanishola\_61:

(1, 47887), (4, 47968), (6, 48037), (Start: 14 @48244 has 30 MA's), (15, 48289), (21, 48358),

Gene: Sitar\_64 Start: 51115, Stop: 51399, Start Num: 14

Candidate Starts for Sitar\_64:

(2, 50830), (6, 50905), (Start: 14 @51115 has 30 MA's), (15, 51160), (21, 51229),

Gene: Stultus\_60 Start: 49377, Stop: 49661, Start Num: 14

Candidate Starts for Stultus\_60:

(2, 49092), (6, 49167), (Start: 14 @49377 has 30 MA's), (15, 49422), (21, 49491),

Gene: Tardus\_86 Start: 57993, Stop: 58274, Start Num: 14

Candidate Starts for Tardus\_86:

(5, 57741), (8, 57810), (9, 57816), (10, 57819), (13, 57978), (Start: 14 @57993 has 30 MA's), (15, 58038), (16, 58044), (18, 58077), (19, 58083), (21, 58107), (24, 58170), (25, 58179), (30, 58233),

Gene: Thing3\_62 Start: 49351, Stop: 49635, Start Num: 14

Candidate Starts for Thing3\_62:

(7, 49168), (11, 49249), (12, 49318), (Start: 14 @49351 has 30 MA's), (15, 49396),

Gene: Verity\_83 Start: 58773, Stop: 59054, Start Num: 14

Candidate Starts for Verity\_83:

(Start: 14 @58773 has 30 MA's), (15, 58818), (16, 58824), (18, 58857), (19, 58863), (21, 58887), (25, 58959),

Gene: Zipp\_84 Start: 58654, Stop: 58935, Start Num: 14

Candidate Starts for Zipp\_84:

(Start: 14 @58654 has 30 MA's), (15, 58699), (16, 58705), (18, 58738), (19, 58744), (21, 58768), (25, 58840),

Gene: Zitch\_86 Start: 56966, Stop: 57247, Start Num: 14

Candidate Starts for Zitch\_86:

(Start: 14 @56966 has 30 MA's), (15, 57011), (16, 57017), (18, 57050), (19, 57056), (21, 57080),