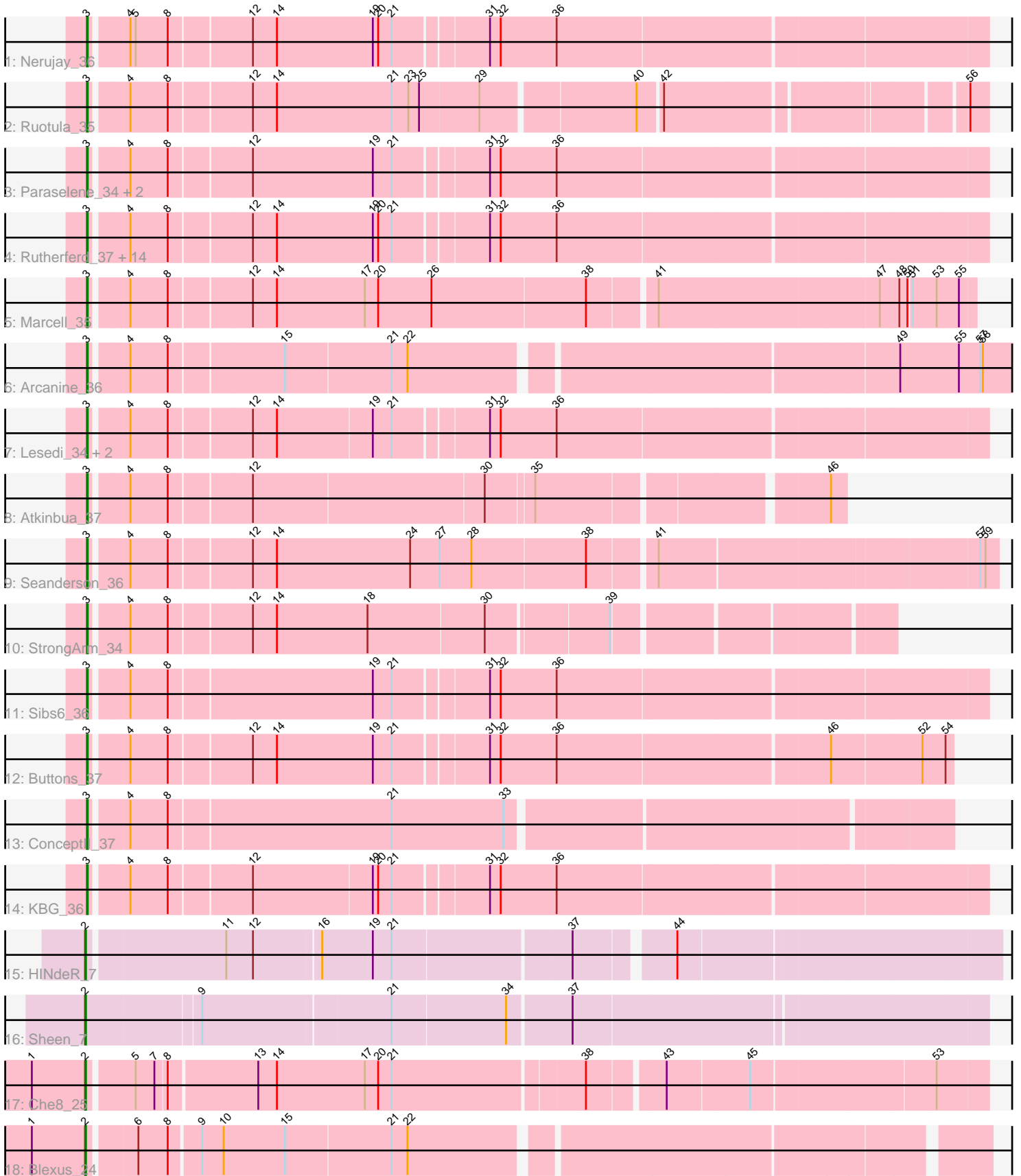


Pham 163782



Note: Tracks are now grouped by subcluster and scaled. Switching in subcluster is indicated by changes in track color. Track scale is now set by default to display the region 30 bp upstream of start 1 to 30 bp downstream of the last possible start. If this default region is judged to be packed too tightly with annotated starts, the track will be further scaled to only show that region of the ORF with annotated starts. This action will be indicated by adding "Zoomed" to the title. For starts, yellow indicates the location of called starts comprised solely of Glimmer/GeneMark auto-annotations, green indicates the location of called starts with at least 1 manual gene annotation.

Pham 163782 Report

This analysis was run 04/28/24 on database version 559.

Pham number 163782 has 36 members, 0 are drafts.

Phages represented in each track:

- Track 1 : Nerujay_36
- Track 2 : Ruotula_35
- Track 3 : Paraselene_34, Magnar_35, BPBiebs31_36
- Track 4 : Rutherferd_37, SkiPole_38, Zeuska_36, BillKnuckles_36, NEHalo_35, Traft412_37, JackSparrow_36, Trouble_36, AFIS_35, SpikeBT_37, Ohno789_35, Magnito_34, Monet_37, DD5_36, Perseus_37
- Track 5 : Marcell_35
- Track 6 : Arcanine_36
- Track 7 : Lesedi_34, Abrogate_360, Marge_36
- Track 8 : Atkinbua_37
- Track 9 : Seanderson_36
- Track 10 : StrongArm_34
- Track 11 : Sibs6_36
- Track 12 : Buttons_37
- Track 13 : ConceptII_37
- Track 14 : KBG_36
- Track 15 : HINdeR_7
- Track 16 : Sheen_7
- Track 17 : Che8_25
- Track 18 : Blexus_24

Summary of Final Annotations (See graph section above for start numbers):

The start number called the most often in the published annotations is 3, it was called in 32 of the 36 non-draft genes in the pham.

Genes that call this "Most Annotated" start:

- AFIS_35, Abrogate_360, Arcanine_36, Atkinbua_37, BPBiebs31_36, BillKnuckles_36, Buttons_37, ConceptII_37, DD5_36, JackSparrow_36, KBG_36, Lesedi_34, Magnar_35, Magnito_34, Marcell_35, Marge_36, Monet_37, NEHalo_35, Nerujay_36, Ohno789_35, Paraselene_34, Perseus_37, Ruotula_35, Rutherferd_37, Seanderson_36, Sibs6_36, SkiPole_38, SpikeBT_37, StrongArm_34, Traft412_37, Trouble_36, Zeuska_36,

Genes that have the "Most Annotated" start but do not call it:

-

Genes that do not have the "Most Annotated" start:

- Blexus_24, Che8_25, HINdeR_7, Sheen_7,

Summary by start number:

Start 2:

- Found in 4 of 36 (11.1%) of genes in pham
- Manual Annotations of this start: 4 of 36
- Called 100.0% of time when present
- Phage (with cluster) where this start called: Blexus_24 (F1), Che8_25 (F1), HINdeR_7 (A7), Sheen_7 (A7),

Start 3:

- Found in 32 of 36 (88.9%) of genes in pham
- Manual Annotations of this start: 32 of 36
- Called 100.0% of time when present
- Phage (with cluster) where this start called: AFIS_35 (A1), Abrogate_360 (A1), Arcanine_36 (A1), Atkinbua_37 (A1), BPBiabs31_36 (A1), BillKnuckles_36 (A1), Buttons_37 (A1), ConceptII_37 (A1), DD5_36 (A1), JackSparrow_36 (A1), KBG_36 (A1), Lesedi_34 (A1), Magnar_35 (A1), Magnito_34 (A1), Marcell_35 (A1), Marge_36 (A1), Monet_37 (A1), NEHalo_35 (A1), Nerujay_36 (A1), Ohno789_35 (A1), Paraselene_34 (A1), Perseus_37 (A1), Ruotula_35 (A1), Rutherford_37 (A1), Seanderson_36 (A1), Sibs6_36 (A1), SkiPole_38 (A1), SpikeBT_37 (A1), StrongArm_34 (A1), Traft412_37 (A1), Trouble_36 (A1), Zeuska_36 (A1),

Summary by clusters:

There are 3 clusters represented in this pham: A1, F1, A7,

Info for manual annotations of cluster A1:

- Start number 3 was manually annotated 32 times for cluster A1.

Info for manual annotations of cluster A7:

- Start number 2 was manually annotated 2 times for cluster A7.

Info for manual annotations of cluster F1:

- Start number 2 was manually annotated 2 times for cluster F1.

Gene Information:

Gene: AFIS_35 Start: 28138, Stop: 29097, Start Num: 3

Candidate Starts for AFIS_35:

(Start: 3 @28138 has 32 MA's), (4, 28174), (8, 28216), (12, 28303), (14, 28330), (19, 28438), (20, 28444), (21, 28459), (31, 28558), (32, 28570), (36, 28633),

Gene: Abrogate_360 Start: 28813, Stop: 29772, Start Num: 3

Candidate Starts for Abrogate_360:

(Start: 3 @28813 has 32 MA's), (4, 28849), (8, 28891), (12, 28978), (14, 29005), (19, 29113), (21, 29134), (31, 29233), (32, 29245), (36, 29308),

Gene: Arcanine_36 Start: 27784, Stop: 28773, Start Num: 3

Candidate Starts for Arcanine_36:

(Start: 3 @27784 has 32 MA's), (4, 27820), (8, 27862), (15, 27985), (21, 28102), (22, 28120), (49, 28639), (55, 28705), (57, 28729), (58, 28732),

Gene: Atkinbua_37 Start: 28484, Stop: 29272, Start Num: 3

Candidate Starts for Atkinbua_37:

(Start: 3 @28484 has 32 MA's), (4, 28520), (8, 28562), (12, 28649), (30, 28904), (35, 28955), (46, 29255),

Gene: BPBiebs31_36 Start: 28355, Stop: 29314, Start Num: 3

Candidate Starts for BPBiebs31_36:

(Start: 3 @28355 has 32 MA's), (4, 28391), (8, 28433), (12, 28520), (19, 28655), (21, 28676), (31, 28775), (32, 28787), (36, 28850),

Gene: BillKnuckles_36 Start: 28751, Stop: 29710, Start Num: 3

Candidate Starts for BillKnuckles_36:

(Start: 3 @28751 has 32 MA's), (4, 28787), (8, 28829), (12, 28916), (14, 28943), (19, 29051), (20, 29057), (21, 29072), (31, 29171), (32, 29183), (36, 29246),

Gene: Blexus_24 Start: 24450, Stop: 25397, Start Num: 2

Candidate Starts for Blexus_24:

(1, 24390), (Start: 2 @24450 has 4 MA's), (6, 24498), (8, 24531), (9, 24564), (10, 24588), (15, 24657), (21, 24774), (22, 24792),

Gene: Buttons_37 Start: 29009, Stop: 29929, Start Num: 3

Candidate Starts for Buttons_37:

(Start: 3 @29009 has 32 MA's), (4, 29045), (8, 29087), (12, 29174), (14, 29201), (19, 29309), (21, 29330), (31, 29429), (32, 29441), (36, 29504), (46, 29798), (52, 29897), (54, 29921),

Gene: Che8_25 Start: 24293, Stop: 25249, Start Num: 2

Candidate Starts for Che8_25:

(1, 24233), (Start: 2 @24293 has 4 MA's), (5, 24341), (7, 24362), (8, 24374), (13, 24470), (14, 24491), (17, 24590), (20, 24605), (21, 24620), (38, 24827), (43, 24905), (45, 24995), (53, 25193),

Gene: ConceptII_37 Start: 28990, Stop: 29907, Start Num: 3

Candidate Starts for ConceptII_37:

(Start: 3 @28990 has 32 MA's), (4, 29026), (8, 29068), (21, 29311), (33, 29437),

Gene: DD5_36 Start: 28752, Stop: 29711, Start Num: 3

Candidate Starts for DD5_36:

(Start: 3 @28752 has 32 MA's), (4, 28788), (8, 28830), (12, 28917), (14, 28944), (19, 29052), (20, 29058), (21, 29073), (31, 29172), (32, 29184), (36, 29247),

Gene: HINdeR_7 Start: 4364, Stop: 5329, Start Num: 2

Candidate Starts for HINdeR_7:

(Start: 2 @4364 has 4 MA's), (11, 4511), (12, 4541), (16, 4613), (19, 4670), (21, 4691), (37, 4883), (44, 4982),

Gene: JackSparrow_36 Start: 28398, Stop: 29357, Start Num: 3

Candidate Starts for JackSparrow_36:

(Start: 3 @28398 has 32 MA's), (4, 28434), (8, 28476), (12, 28563), (14, 28590), (19, 28698), (20, 28704), (21, 28719), (31, 28818), (32, 28830), (36, 28893),

Gene: KBG_36 Start: 28930, Stop: 29886, Start Num: 3

Candidate Starts for KBG_36:

(Start: 3 @28930 has 32 MA's), (4, 28966), (8, 29008), (12, 29095), (19, 29227), (20, 29233), (21, 29248), (31, 29347), (32, 29359), (36, 29422),

Gene: Lesedi_34 Start: 27802, Stop: 28758, Start Num: 3

Candidate Starts for Lesedi_34:

(Start: 3 @27802 has 32 MA's), (4, 27838), (8, 27880), (12, 27967), (14, 27994), (19, 28099), (21, 28120), (31, 28219), (32, 28231), (36, 28294),

Gene: Magnar_35 Start: 27771, Stop: 28730, Start Num: 3

Candidate Starts for Magnar_35:

(Start: 3 @27771 has 32 MA's), (4, 27807), (8, 27849), (12, 27936), (19, 28071), (21, 28092), (31, 28191), (32, 28203), (36, 28266),

Gene: Magnito_34 Start: 27523, Stop: 28482, Start Num: 3

Candidate Starts for Magnito_34:

(Start: 3 @27523 has 32 MA's), (4, 27559), (8, 27601), (12, 27688), (14, 27715), (19, 27823), (20, 27829), (21, 27844), (31, 27943), (32, 27955), (36, 28018),

Gene: Marcell_35 Start: 28259, Stop: 29206, Start Num: 3

Candidate Starts for Marcell_35:

(Start: 3 @28259 has 32 MA's), (4, 28295), (8, 28337), (12, 28424), (14, 28451), (17, 28550), (20, 28565), (26, 28625), (38, 28796), (41, 28865), (47, 29105), (48, 29126), (50, 29135), (51, 29138), (53, 29165), (55, 29189),

Gene: Marge_36 Start: 28659, Stop: 29618, Start Num: 3

Candidate Starts for Marge_36:

(Start: 3 @28659 has 32 MA's), (4, 28695), (8, 28737), (12, 28824), (14, 28851), (19, 28959), (21, 28980), (31, 29079), (32, 29091), (36, 29154),

Gene: Monet_37 Start: 29287, Stop: 30246, Start Num: 3

Candidate Starts for Monet_37:

(Start: 3 @29287 has 32 MA's), (4, 29323), (8, 29365), (12, 29452), (14, 29479), (19, 29587), (20, 29593), (21, 29608), (31, 29707), (32, 29719), (36, 29782),

Gene: NEHalo_35 Start: 27845, Stop: 28804, Start Num: 3

Candidate Starts for NEHalo_35:

(Start: 3 @27845 has 32 MA's), (4, 27881), (8, 27923), (12, 28010), (14, 28037), (19, 28145), (20, 28151), (21, 28166), (31, 28265), (32, 28277), (36, 28340),

Gene: Nerujay_36 Start: 28513, Stop: 29472, Start Num: 3

Candidate Starts for Nerujay_36:

(Start: 3 @28513 has 32 MA's), (4, 28549), (5, 28555), (8, 28591), (12, 28678), (14, 28705), (19, 28813), (20, 28819), (21, 28834), (31, 28933), (32, 28945), (36, 29008),

Gene: Ohno789_35 Start: 27906, Stop: 28865, Start Num: 3

Candidate Starts for Ohno789_35:

(Start: 3 @27906 has 32 MA's), (4, 27942), (8, 27984), (12, 28071), (14, 28098), (19, 28206), (20, 28212), (21, 28227), (31, 28326), (32, 28338), (36, 28401),

Gene: Paraselene_34 Start: 28248, Stop: 29207, Start Num: 3

Candidate Starts for Paraselene_34:

(Start: 3 @28248 has 32 MA's), (4, 28284), (8, 28326), (12, 28413), (19, 28548), (21, 28569), (31, 28668), (32, 28680), (36, 28743),

Gene: Perseus_37 Start: 28932, Stop: 29891, Start Num: 3

Candidate Starts for Perseus_37:

(Start: 3 @28932 has 32 MA's), (4, 28968), (8, 29010), (12, 29097), (14, 29124), (19, 29232), (20, 29238), (21, 29253), (31, 29352), (32, 29364), (36, 29427),

Gene: Ruotula_35 Start: 28645, Stop: 29577, Start Num: 3

Candidate Starts for Ruotula_35:

(Start: 3 @28645 has 32 MA's), (4, 28681), (8, 28723), (12, 28810), (14, 28837), (21, 28966), (23, 28984), (25, 28996), (29, 29062), (40, 29227), (42, 29251), (56, 29557),

Gene: Rutherferd_37 Start: 28709, Stop: 29668, Start Num: 3

Candidate Starts for Rutherferd_37:

(Start: 3 @28709 has 32 MA's), (4, 28745), (8, 28787), (12, 28874), (14, 28901), (19, 29009), (20, 29015), (21, 29030), (31, 29129), (32, 29141), (36, 29204),

Gene: Seanderson_36 Start: 28535, Stop: 29503, Start Num: 3

Candidate Starts for Seanderson_36:

(Start: 3 @28535 has 32 MA's), (4, 28571), (8, 28613), (12, 28700), (14, 28727), (24, 28877), (27, 28910), (28, 28946), (38, 29072), (41, 29141), (57, 29483), (59, 29489),

Gene: Sheen_7 Start: 4509, Stop: 5477, Start Num: 2

Candidate Starts for Sheen_7:

(Start: 2 @4509 has 4 MA's), (9, 4632), (21, 4836), (34, 4962), (37, 5031),

Gene: Sibs6_36 Start: 27022, Stop: 27981, Start Num: 3

Candidate Starts for Sibs6_36:

(Start: 3 @27022 has 32 MA's), (4, 27058), (8, 27100), (19, 27322), (21, 27343), (31, 27442), (32, 27454), (36, 27517),

Gene: SkiPole_38 Start: 28360, Stop: 29319, Start Num: 3

Candidate Starts for SkiPole_38:

(Start: 3 @28360 has 32 MA's), (4, 28396), (8, 28438), (12, 28525), (14, 28552), (19, 28660), (20, 28666), (21, 28681), (31, 28780), (32, 28792), (36, 28855),

Gene: SpikeBT_37 Start: 28951, Stop: 29910, Start Num: 3

Candidate Starts for SpikeBT_37:

(Start: 3 @28951 has 32 MA's), (4, 28987), (8, 29029), (12, 29116), (14, 29143), (19, 29251), (20, 29257), (21, 29272), (31, 29371), (32, 29383), (36, 29446),

Gene: StrongArm_34 Start: 29035, Stop: 29871, Start Num: 3

Candidate Starts for StrongArm_34:

(Start: 3 @29035 has 32 MA's), (4, 29071), (8, 29113), (12, 29200), (14, 29227), (18, 29329), (30, 29458), (39, 29587),

Gene: Traft412_37 Start: 28951, Stop: 29910, Start Num: 3

Candidate Starts for Traft412_37:

(Start: 3 @28951 has 32 MA's), (4, 28987), (8, 29029), (12, 29116), (14, 29143), (19, 29251), (20, 29257), (21, 29272), (31, 29371), (32, 29383), (36, 29446),

Gene: Trouble_36 Start: 28854, Stop: 29813, Start Num: 3

Candidate Starts for Trouble_36:

(Start: 3 @28854 has 32 MA's), (4, 28890), (8, 28932), (12, 29019), (14, 29046), (19, 29154), (20, 29160), (21, 29175), (31, 29274), (32, 29286), (36, 29349),

Gene: Zeuska_36 Start: 28583, Stop: 29542, Start Num: 3

Candidate Starts for Zeuska_36:

(Start: 3 @28583 has 32 MA's), (4, 28619), (8, 28661), (12, 28748), (14, 28775), (19, 28883), (20, 28889), (21, 28904), (31, 29003), (32, 29015), (36, 29078),