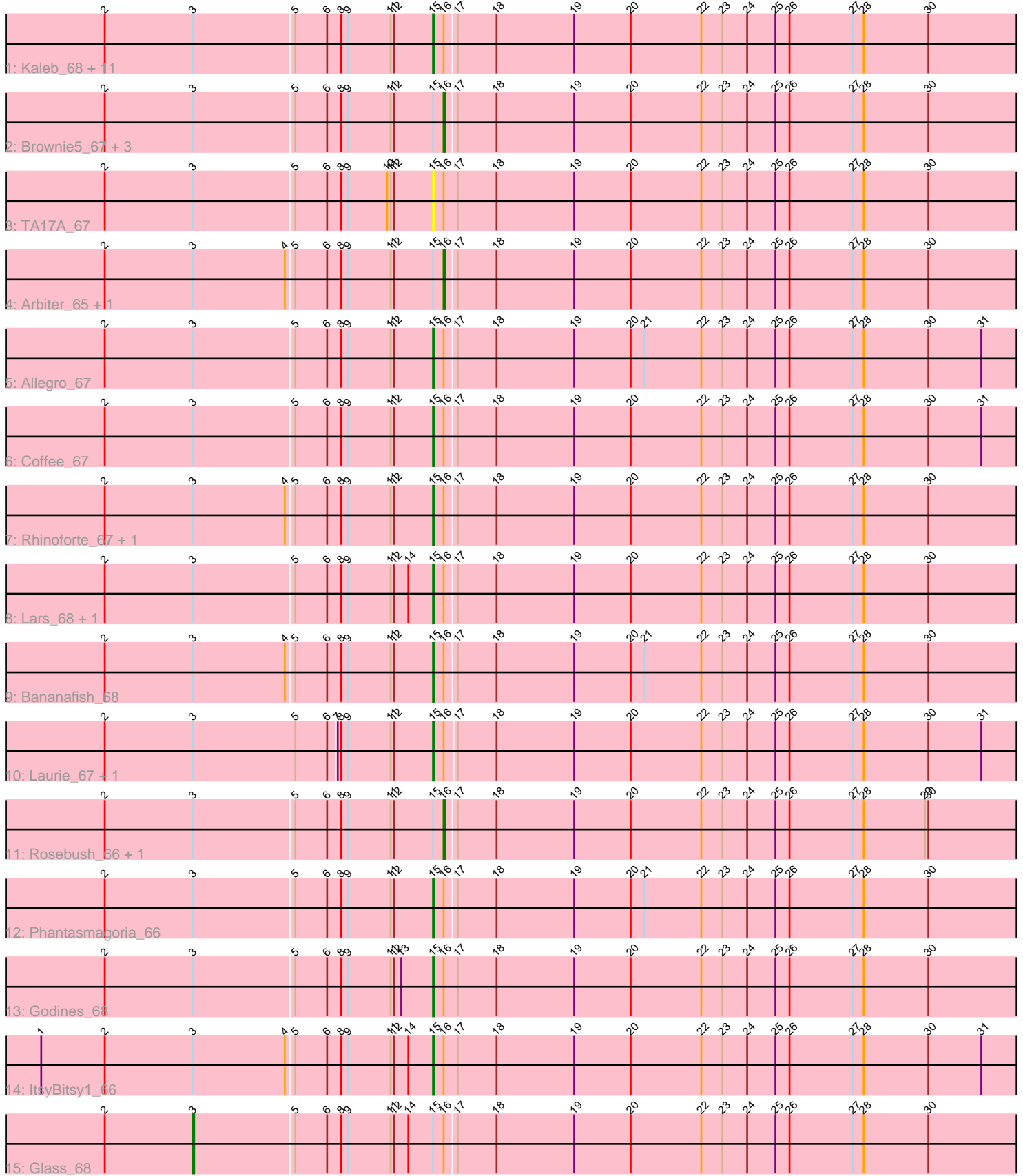


Pham 163793



Note: Tracks are now grouped by subcluster and scaled. Switching in subcluster is indicated by changes in track color. Track scale is now set by default to display the region 30 bp upstream of start 1 to 30 bp downstream of the last possible start. If this default region is judged to be packed too tightly with annotated starts, the track will be further scaled to only show that region of the ORF with annotated starts. This action will be indicated by adding "Zoomed" to the title. For starts, yellow indicates the location of called starts comprised solely of Glimmer/GeneMark auto-annotations, green indicates the location of called starts with at least 1 manual gene annotation.

## Pham 163793 Report

This analysis was run 04/28/24 on database version 559.

Pham number 163793 has 34 members, 2 are drafts.

Phages represented in each track:

- Track 1 : Kaleb\_68, Calamitous\_68, MasterPo\_68, Eaglehorse\_67, Boyle\_67, Kheth\_67, Sabella\_67, Lephleur\_67, Opia\_68, FrenchFry\_68, Holeinone\_67, Blocker23\_67
- Track 2 : Brownie5\_67, West99\_67, Faze9\_66, Tinciduntolum\_68
- Track 3 : TA17A\_67
- Track 4 : Arbiter\_65, Ares\_67
- Track 5 : Allegro\_67
- Track 6 : Coffee\_67
- Track 7 : Rhinoforte\_67, Tres\_67
- Track 8 : Lars\_68, LizLemon\_67
- Track 9 : Bananafish\_68
- Track 10 : Laurie\_67, Hedgerow\_67
- Track 11 : Rosebush\_66, Qyrzula\_61
- Track 12 : Phantasmagoria\_66
- Track 13 : Godines\_68
- Track 14 : ItsyBitsy1\_66
- Track 15 : Glass\_68

### ***Summary of Final Annotations (See graph section above for start numbers):***

The start number called the most often in the published annotations is 15, it was called in 23 of the 32 non-draft genes in the pham.

Genes that call this "Most Annotated" start:

- Allegro\_67, Bananafish\_68, Blocker23\_67, Boyle\_67, Calamitous\_68, Coffee\_67, Eaglehorse\_67, FrenchFry\_68, Godines\_68, Hedgerow\_67, Holeinone\_67, ItsyBitsy1\_66, Kaleb\_68, Kheth\_67, Lars\_68, Laurie\_67, Lephleur\_67, LizLemon\_67, MasterPo\_68, Opia\_68, Phantasmagoria\_66, Rhinoforte\_67, Sabella\_67, TA17A\_67, Tres\_67,

Genes that have the "Most Annotated" start but do not call it:

- Arbiter\_65, Ares\_67, Brownie5\_67, Faze9\_66, Glass\_68, Qyrzula\_61, Rosebush\_66, Tinciduntolum\_68, West99\_67,

Genes that do not have the "Most Annotated" start:

- 

### Summary by start number:

Start 3:

- Found in 34 of 34 ( 100.0% ) of genes in pham
- Manual Annotations of this start: 1 of 32
- Called 2.9% of time when present
- Phage (with cluster) where this start called: Glass\_68 (B2),

Start 15:

- Found in 34 of 34 ( 100.0% ) of genes in pham
- Manual Annotations of this start: 23 of 32
- Called 73.5% of time when present
- Phage (with cluster) where this start called: Allegro\_67 (B2), Bananafish\_68 (B2), Blocker23\_67 (B2), Boyle\_67 (B2), Calamitous\_68 (B2), Coffee\_67 (B2), Eaglehorse\_67 (B2), FrenchFry\_68 (B2), Godines\_68 (B2), Hedgerow\_67 (B2), Holeinone\_67 (B2), ItsyBitsy1\_66 (B2), Kaleb\_68 (B2), Kheth\_67 (B2), Lars\_68 (B2), Laurie\_67 (B2), Lephleur\_67 (B2), LizLemon\_67 (B2), MasterPo\_68 (B2), Opia\_68 (B2), Phantasmagoria\_66 (B2), Rhinoforte\_67 (B2), Sabella\_67 (B2), TA17A\_67 (B2), Tres\_67 (B2),

Start 16:

- Found in 34 of 34 ( 100.0% ) of genes in pham
- Manual Annotations of this start: 8 of 32
- Called 23.5% of time when present
- Phage (with cluster) where this start called: Arbiter\_65 (B2), Ares\_67 (B2), Brownie5\_67 (B2), Faze9\_66 (B2), Qyrzula\_61 (B2), Rosebush\_66 (B2), Tinciduntolum\_68 (B2), West99\_67 (B2),

### Summary by clusters:

There is one cluster represented in this pham: B2

Info for manual annotations of cluster B2:

- Start number 3 was manually annotated 1 time for cluster B2.
- Start number 15 was manually annotated 23 times for cluster B2.
- Start number 16 was manually annotated 8 times for cluster B2.

### Gene Information:

Gene: Allegro\_67 Start: 56819, Stop: 57352, Start Num: 15

Candidate Starts for Allegro\_67:

(2, 56543), (Start: 3 @56618 has 1 MA's), (5, 56702), (6, 56729), (8, 56741), (9, 56747), (11, 56783), (12, 56786), (Start: 15 @56819 has 23 MA's), (Start: 16 @56828 has 8 MA's), (17, 56837), (18, 56870), (19, 56936), (20, 56984), (21, 56996), (22, 57044), (23, 57062), (24, 57083), (25, 57107), (26, 57119), (27, 57173), (28, 57182), (30, 57236), (31, 57281),

Gene: Arbiter\_65 Start: 56863, Stop: 57387, Start Num: 16

Candidate Starts for Arbiter\_65:

(2, 56578), (Start: 3 @56653 has 1 MA's), (4, 56731), (5, 56737), (6, 56764), (8, 56776), (9, 56782), (11, 56818), (12, 56821), (Start: 15 @56854 has 23 MA's), (Start: 16 @56863 has 8 MA's), (17, 56872), (18, 56905), (19, 56971), (20, 57019), (22, 57079), (23, 57097), (24, 57118), (25, 57142), (26, 57154), (27, 57208), (28, 57217), (30, 57271),

Gene: Ares\_67 Start: 56834, Stop: 57358, Start Num: 16

Candidate Starts for Ares\_67:

(2, 56549), (Start: 3 @56624 has 1 MA's), (4, 56702), (5, 56708), (6, 56735), (8, 56747), (9, 56753), (11, 56789), (12, 56792), (Start: 15 @56825 has 23 MA's), (Start: 16 @56834 has 8 MA's), (17, 56843), (18, 56876), (19, 56942), (20, 56990), (22, 57050), (23, 57068), (24, 57089), (25, 57113), (26, 57125), (27, 57179), (28, 57188), (30, 57242),

Gene: Bananafish\_68 Start: 56755, Stop: 57288, Start Num: 15

Candidate Starts for Bananafish\_68:

(2, 56479), (Start: 3 @56554 has 1 MA's), (4, 56632), (5, 56638), (6, 56665), (8, 56677), (9, 56683), (11, 56719), (12, 56722), (Start: 15 @56755 has 23 MA's), (Start: 16 @56764 has 8 MA's), (17, 56773), (18, 56806), (19, 56872), (20, 56920), (21, 56932), (22, 56980), (23, 56998), (24, 57019), (25, 57043), (26, 57055), (27, 57109), (28, 57118), (30, 57172),

Gene: Blocker23\_67 Start: 56819, Stop: 57352, Start Num: 15

Candidate Starts for Blocker23\_67:

(2, 56543), (Start: 3 @56618 has 1 MA's), (5, 56702), (6, 56729), (8, 56741), (9, 56747), (11, 56783), (12, 56786), (Start: 15 @56819 has 23 MA's), (Start: 16 @56828 has 8 MA's), (17, 56837), (18, 56870), (19, 56936), (20, 56984), (22, 57044), (23, 57062), (24, 57083), (25, 57107), (26, 57119), (27, 57173), (28, 57182), (30, 57236),

Gene: Boyle\_67 Start: 56863, Stop: 57396, Start Num: 15

Candidate Starts for Boyle\_67:

(2, 56587), (Start: 3 @56662 has 1 MA's), (5, 56746), (6, 56773), (8, 56785), (9, 56791), (11, 56827), (12, 56830), (Start: 15 @56863 has 23 MA's), (Start: 16 @56872 has 8 MA's), (17, 56881), (18, 56914), (19, 56980), (20, 57028), (22, 57088), (23, 57106), (24, 57127), (25, 57151), (26, 57163), (27, 57217), (28, 57226), (30, 57280),

Gene: Brownie5\_67 Start: 56874, Stop: 57398, Start Num: 16

Candidate Starts for Brownie5\_67:

(2, 56589), (Start: 3 @56664 has 1 MA's), (5, 56748), (6, 56775), (8, 56787), (9, 56793), (11, 56829), (12, 56832), (Start: 15 @56865 has 23 MA's), (Start: 16 @56874 has 8 MA's), (17, 56883), (18, 56916), (19, 56982), (20, 57030), (22, 57090), (23, 57108), (24, 57129), (25, 57153), (26, 57165), (27, 57219), (28, 57228), (30, 57282),

Gene: Calamitous\_68 Start: 56753, Stop: 57286, Start Num: 15

Candidate Starts for Calamitous\_68:

(2, 56477), (Start: 3 @56552 has 1 MA's), (5, 56636), (6, 56663), (8, 56675), (9, 56681), (11, 56717), (12, 56720), (Start: 15 @56753 has 23 MA's), (Start: 16 @56762 has 8 MA's), (17, 56771), (18, 56804), (19, 56870), (20, 56918), (22, 56978), (23, 56996), (24, 57017), (25, 57041), (26, 57053), (27, 57107), (28, 57116), (30, 57170),

Gene: Coffee\_67 Start: 56857, Stop: 57390, Start Num: 15

Candidate Starts for Coffee\_67:

(2, 56581), (Start: 3 @56656 has 1 MA's), (5, 56740), (6, 56767), (8, 56779), (9, 56785), (11, 56821), (12, 56824), (Start: 15 @56857 has 23 MA's), (Start: 16 @56866 has 8 MA's), (17, 56875), (18, 56908), (19, 56974), (20, 57022), (22, 57082), (23, 57100), (24, 57121), (25, 57145), (26, 57157), (27, 57211), (28, 57220), (30, 57274), (31, 57319),

Gene: Eaglehorse\_67 Start: 56743, Stop: 57276, Start Num: 15

Candidate Starts for Eaglehorse\_67:

(2, 56467), (Start: 3 @56542 has 1 MA's), (5, 56626), (6, 56653), (8, 56665), (9, 56671), (11, 56707), (12, 56710), (Start: 15 @56743 has 23 MA's), (Start: 16 @56752 has 8 MA's), (17, 56761), (18, 56794), (19, 56860), (20, 56908), (22, 56968), (23, 56986), (24, 57007), (25, 57031), (26, 57043), (27, 57097), (28, 57106), (30, 57160),

Gene: Faze9\_66 Start: 56891, Stop: 57415, Start Num: 16

Candidate Starts for Faze9\_66:

(2, 56606), (Start: 3 @56681 has 1 MA's), (5, 56765), (6, 56792), (8, 56804), (9, 56810), (11, 56846), (12, 56849), (Start: 15 @56882 has 23 MA's), (Start: 16 @56891 has 8 MA's), (17, 56900), (18, 56933), (19, 56999), (20, 57047), (22, 57107), (23, 57125), (24, 57146), (25, 57170), (26, 57182), (27, 57236), (28, 57245), (30, 57299),

Gene: FrenchFry\_68 Start: 56868, Stop: 57401, Start Num: 15

Candidate Starts for FrenchFry\_68:

(2, 56592), (Start: 3 @56667 has 1 MA's), (5, 56751), (6, 56778), (8, 56790), (9, 56796), (11, 56832), (12, 56835), (Start: 15 @56868 has 23 MA's), (Start: 16 @56877 has 8 MA's), (17, 56886), (18, 56919), (19, 56985), (20, 57033), (22, 57093), (23, 57111), (24, 57132), (25, 57156), (26, 57168), (27, 57222), (28, 57231), (30, 57285),

Gene: Glass\_68 Start: 56669, Stop: 57403, Start Num: 3

Candidate Starts for Glass\_68:

(2, 56594), (Start: 3 @56669 has 1 MA's), (5, 56753), (6, 56780), (8, 56792), (9, 56798), (11, 56834), (12, 56837), (14, 56849), (Start: 15 @56870 has 23 MA's), (Start: 16 @56879 has 8 MA's), (17, 56888), (18, 56921), (19, 56987), (20, 57035), (22, 57095), (23, 57113), (24, 57134), (25, 57158), (26, 57170), (27, 57224), (28, 57233), (30, 57287),

Gene: Godines\_68 Start: 57120, Stop: 57656, Start Num: 15

Candidate Starts for Godines\_68:

(2, 56844), (Start: 3 @56919 has 1 MA's), (5, 57003), (6, 57030), (8, 57042), (9, 57048), (11, 57084), (12, 57087), (13, 57093), (Start: 15 @57120 has 23 MA's), (Start: 16 @57129 has 8 MA's), (17, 57141), (18, 57174), (19, 57240), (20, 57288), (22, 57348), (23, 57366), (24, 57387), (25, 57411), (26, 57423), (27, 57477), (28, 57486), (30, 57540),

Gene: Hedgerow\_67 Start: 56820, Stop: 57353, Start Num: 15

Candidate Starts for Hedgerow\_67:

(2, 56544), (Start: 3 @56619 has 1 MA's), (5, 56706), (6, 56733), (7, 56739), (8, 56742), (9, 56748), (11, 56784), (12, 56787), (Start: 15 @56820 has 23 MA's), (Start: 16 @56829 has 8 MA's), (17, 56838), (18, 56871), (19, 56937), (20, 56985), (22, 57045), (23, 57063), (24, 57084), (25, 57108), (26, 57120), (27, 57174), (28, 57183), (30, 57237), (31, 57282),

Gene: Holeinone\_67 Start: 56725, Stop: 57258, Start Num: 15

Candidate Starts for Holeinone\_67:

(2, 56449), (Start: 3 @56524 has 1 MA's), (5, 56608), (6, 56635), (8, 56647), (9, 56653), (11, 56689), (12, 56692), (Start: 15 @56725 has 23 MA's), (Start: 16 @56734 has 8 MA's), (17, 56743), (18, 56776), (19, 56842), (20, 56890), (22, 56950), (23, 56968), (24, 56989), (25, 57013), (26, 57025), (27, 57079), (28, 57088), (30, 57142),

Gene: ItsyBitsy1\_66 Start: 56958, Stop: 57494, Start Num: 15

Candidate Starts for ItsyBitsy1\_66:

(1, 56628), (2, 56682), (Start: 3 @56757 has 1 MA's), (4, 56835), (5, 56841), (6, 56868), (8, 56880), (9, 56886), (11, 56922), (12, 56925), (14, 56937), (Start: 15 @56958 has 23 MA's), (Start: 16 @56967 has 8 MA's), (17, 56979), (18, 57012), (19, 57078), (20, 57126), (22, 57186), (23, 57204), (24, 57225), (25, 57249), (26, 57261), (27, 57315), (28, 57324), (30, 57378), (31, 57423),

Gene: Kaleb\_68 Start: 56875, Stop: 57408, Start Num: 15

Candidate Starts for Kaleb\_68:

(2, 56599), (Start: 3 @56674 has 1 MA's), (5, 56758), (6, 56785), (8, 56797), (9, 56803), (11, 56839), (12, 56842), (Start: 15 @56875 has 23 MA's), (Start: 16 @56884 has 8 MA's), (17, 56893), (18, 56926), (19, 56992), (20, 57040), (22, 57100), (23, 57118), (24, 57139), (25, 57163), (26, 57175), (27, 57229), (28, 57238), (30, 57292),

Gene: Kheth\_67 Start: 56787, Stop: 57320, Start Num: 15

Candidate Starts for Kheth\_67:

(2, 56511), (Start: 3 @56586 has 1 MA's), (5, 56670), (6, 56697), (8, 56709), (9, 56715), (11, 56751), (12, 56754), (Start: 15 @56787 has 23 MA's), (Start: 16 @56796 has 8 MA's), (17, 56805), (18, 56838), (19, 56904), (20, 56952), (22, 57012), (23, 57030), (24, 57051), (25, 57075), (26, 57087), (27, 57141), (28, 57150), (30, 57204),

Gene: Lars\_68 Start: 56848, Stop: 57381, Start Num: 15

Candidate Starts for Lars\_68:

(2, 56572), (Start: 3 @56647 has 1 MA's), (5, 56731), (6, 56758), (8, 56770), (9, 56776), (11, 56812), (12, 56815), (14, 56827), (Start: 15 @56848 has 23 MA's), (Start: 16 @56857 has 8 MA's), (17, 56866), (18, 56899), (19, 56965), (20, 57013), (22, 57073), (23, 57091), (24, 57112), (25, 57136), (26, 57148), (27, 57202), (28, 57211), (30, 57265),

Gene: Laurie\_67 Start: 56525, Stop: 57058, Start Num: 15

Candidate Starts for Laurie\_67:

(2, 56249), (Start: 3 @56324 has 1 MA's), (5, 56411), (6, 56438), (7, 56444), (8, 56447), (9, 56453), (11, 56489), (12, 56492), (Start: 15 @56525 has 23 MA's), (Start: 16 @56534 has 8 MA's), (17, 56543), (18, 56576), (19, 56642), (20, 56690), (22, 56750), (23, 56768), (24, 56789), (25, 56813), (26, 56825), (27, 56879), (28, 56888), (30, 56942), (31, 56987),

Gene: Lephleur\_67 Start: 56710, Stop: 57243, Start Num: 15

Candidate Starts for Lephleur\_67:

(2, 56434), (Start: 3 @56509 has 1 MA's), (5, 56593), (6, 56620), (8, 56632), (9, 56638), (11, 56674), (12, 56677), (Start: 15 @56710 has 23 MA's), (Start: 16 @56719 has 8 MA's), (17, 56728), (18, 56761), (19, 56827), (20, 56875), (22, 56935), (23, 56953), (24, 56974), (25, 56998), (26, 57010), (27, 57064), (28, 57073), (30, 57127),

Gene: LizLemon\_67 Start: 56875, Stop: 57408, Start Num: 15

Candidate Starts for LizLemon\_67:

(2, 56599), (Start: 3 @56674 has 1 MA's), (5, 56758), (6, 56785), (8, 56797), (9, 56803), (11, 56839), (12, 56842), (14, 56854), (Start: 15 @56875 has 23 MA's), (Start: 16 @56884 has 8 MA's), (17, 56893), (18, 56926), (19, 56992), (20, 57040), (22, 57100), (23, 57118), (24, 57139), (25, 57163), (26, 57175), (27, 57229), (28, 57238), (30, 57292),

Gene: MasterPo\_68 Start: 56742, Stop: 57275, Start Num: 15

Candidate Starts for MasterPo\_68:

(2, 56466), (Start: 3 @56541 has 1 MA's), (5, 56625), (6, 56652), (8, 56664), (9, 56670), (11, 56706), (12, 56709), (Start: 15 @56742 has 23 MA's), (Start: 16 @56751 has 8 MA's), (17, 56760), (18, 56793), (19, 56859), (20, 56907), (22, 56967), (23, 56985), (24, 57006), (25, 57030), (26, 57042), (27, 57096), (28, 57105), (30, 57159),

Gene: Opia\_68 Start: 56768, Stop: 57301, Start Num: 15

Candidate Starts for Opia\_68:

(2, 56492), (Start: 3 @56567 has 1 MA's), (5, 56651), (6, 56678), (8, 56690), (9, 56696), (11, 56732), (12, 56735), (Start: 15 @56768 has 23 MA's), (Start: 16 @56777 has 8 MA's), (17, 56786), (18, 56819), (19, 56885), (20, 56933), (22, 56993), (23, 57011), (24, 57032), (25, 57056), (26, 57068), (27, 57122), (28, 57131), (30, 57185),

Gene: Phantasmagoria\_66 Start: 56757, Stop: 57290, Start Num: 15

Candidate Starts for Phantasmagoria\_66:

(2, 56481), (Start: 3 @56556 has 1 MA's), (5, 56640), (6, 56667), (8, 56679), (9, 56685), (11, 56721), (12, 56724), (Start: 15 @56757 has 23 MA's), (Start: 16 @56766 has 8 MA's), (17, 56775), (18, 56808), (19, 56874), (20, 56922), (21, 56934), (22, 56982), (23, 57000), (24, 57021), (25, 57045), (26, 57057), (27, 57111), (28, 57120), (30, 57174),

Gene: Qyrzula\_61 Start: 56891, Stop: 57415, Start Num: 16

Candidate Starts for Qyrzula\_61:

(2, 56606), (Start: 3 @56681 has 1 MA's), (5, 56765), (6, 56792), (8, 56804), (9, 56810), (11, 56846), (12, 56849), (Start: 15 @56882 has 23 MA's), (Start: 16 @56891 has 8 MA's), (17, 56900), (18, 56933), (19, 56999), (20, 57047), (22, 57107), (23, 57125), (24, 57146), (25, 57170), (26, 57182), (27, 57236), (28, 57245), (29, 57296), (30, 57299),

Gene: Rhinoforte\_67 Start: 56795, Stop: 57328, Start Num: 15

Candidate Starts for Rhinoforte\_67:

(2, 56519), (Start: 3 @56594 has 1 MA's), (4, 56672), (5, 56678), (6, 56705), (8, 56717), (9, 56723), (11, 56759), (12, 56762), (Start: 15 @56795 has 23 MA's), (Start: 16 @56804 has 8 MA's), (17, 56813), (18, 56846), (19, 56912), (20, 56960), (22, 57020), (23, 57038), (24, 57059), (25, 57083), (26, 57095), (27, 57149), (28, 57158), (30, 57212),

Gene: Rosebush\_66 Start: 56870, Stop: 57394, Start Num: 16

Candidate Starts for Rosebush\_66:

(2, 56585), (Start: 3 @56660 has 1 MA's), (5, 56744), (6, 56771), (8, 56783), (9, 56789), (11, 56825), (12, 56828), (Start: 15 @56861 has 23 MA's), (Start: 16 @56870 has 8 MA's), (17, 56879), (18, 56912), (19, 56978), (20, 57026), (22, 57086), (23, 57104), (24, 57125), (25, 57149), (26, 57161), (27, 57215), (28, 57224), (29, 57275), (30, 57278),

Gene: Sabella\_67 Start: 56697, Stop: 57230, Start Num: 15

Candidate Starts for Sabella\_67:

(2, 56421), (Start: 3 @56496 has 1 MA's), (5, 56580), (6, 56607), (8, 56619), (9, 56625), (11, 56661), (12, 56664), (Start: 15 @56697 has 23 MA's), (Start: 16 @56706 has 8 MA's), (17, 56715), (18, 56748), (19, 56814), (20, 56862), (22, 56922), (23, 56940), (24, 56961), (25, 56985), (26, 56997), (27, 57051), (28, 57060), (30, 57114),

Gene: TA17A\_67 Start: 56700, Stop: 57236, Start Num: 15

Candidate Starts for TA17A\_67:

(2, 56424), (Start: 3 @56499 has 1 MA's), (5, 56583), (6, 56610), (8, 56622), (9, 56628), (10, 56661), (11, 56664), (12, 56667), (Start: 15 @56700 has 23 MA's), (Start: 16 @56709 has 8 MA's), (17, 56721), (18, 56754), (19, 56820), (20, 56868), (22, 56928), (23, 56946), (24, 56967), (25, 56991), (26, 57003), (27, 57057), (28, 57066), (30, 57120),

Gene: Tinciduntolum\_68 Start: 56873, Stop: 57397, Start Num: 16

Candidate Starts for Tinciduntolum\_68:

(2, 56588), (Start: 3 @56663 has 1 MA's), (5, 56747), (6, 56774), (8, 56786), (9, 56792), (11, 56828), (12, 56831), (Start: 15 @56864 has 23 MA's), (Start: 16 @56873 has 8 MA's), (17, 56882), (18, 56915), (19, 56981), (20, 57029), (22, 57089), (23, 57107), (24, 57128), (25, 57152), (26, 57164), (27, 57218), (28, 57227), (30, 57281),

Gene: Tres\_67 Start: 56718, Stop: 57251, Start Num: 15

Candidate Starts for Tres\_67:

(2, 56442), (Start: 3 @56517 has 1 MA's), (4, 56595), (5, 56601), (6, 56628), (8, 56640), (9, 56646), (11, 56682), (12, 56685), (Start: 15 @56718 has 23 MA's), (Start: 16 @56727 has 8 MA's), (17, 56736), (18, 56769), (19, 56835), (20, 56883), (22, 56943), (23, 56961), (24, 56982), (25, 57006), (26, 57018), (27, 57072), (28, 57081), (30, 57135),

Gene: West99\_67 Start: 56900, Stop: 57427, Start Num: 16

Candidate Starts for West99\_67:

(2, 56615), (Start: 3 @56690 has 1 MA's), (5, 56777), (6, 56804), (8, 56813), (9, 56819), (11, 56855), (12, 56858), (Start: 15 @56891 has 23 MA's), (Start: 16 @56900 has 8 MA's), (17, 56912), (18, 56945), (19, 57011), (20, 57059), (22, 57119), (23, 57137), (24, 57158), (25, 57182), (26, 57194), (27, 57248), (28, 57257), (30, 57311),