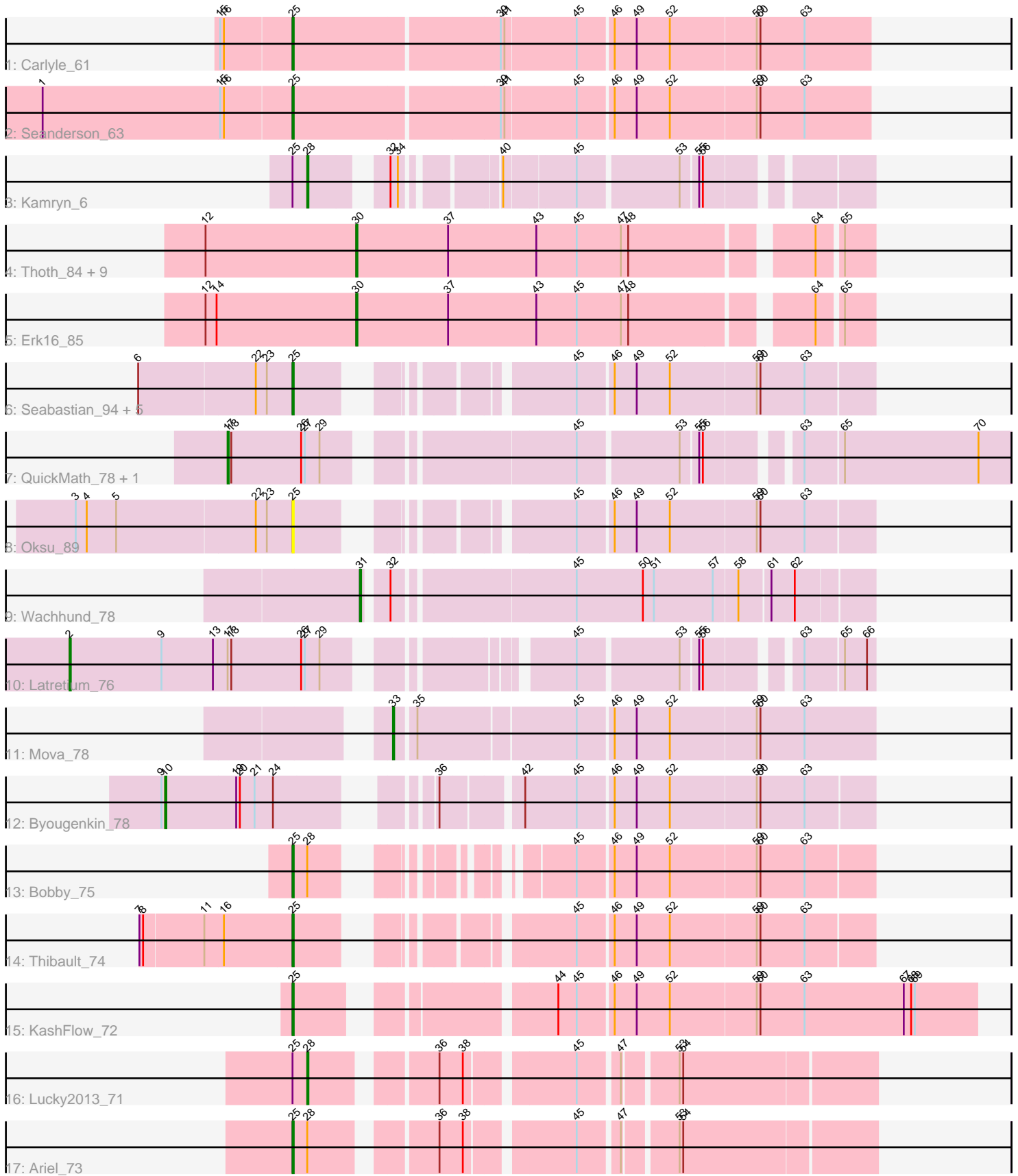


Pham 163811



Note: Tracks are now grouped by subcluster and scaled. Switching in subcluster is indicated by changes in track color. Track scale is now set by default to display the region 30 bp upstream of start 1 to 30 bp downstream of the last possible start. If this default region is judged to be packed too tightly with annotated starts, the track will be further scaled to only show that region of the ORF with annotated starts. This action will be indicated by adding "Zoomed" to the title. For starts, yellow indicates the location of called starts comprised solely of Glimmer/GeneMark auto-annotations, green indicates the location of called starts with at least 1 manual gene annotation.

Pham 163811 Report

This analysis was run 04/28/24 on database version 559.

Pham number 163811 has 32 members, 2 are drafts.

Phages represented in each track:

- Track 1 : Carlyle_61
- Track 2 : Seanderson_63
- Track 3 : Kamryn_6
- Track 4 : Thoth_84, WaldoWhy_85, Adjutor_82, Butterscotch_82, Mopey_86, Giuseppe_86, PLOT_85, Visconti_85, Penelope2018_84, Chill_85
- Track 5 : Erk16_85
- Track 6 : Seabastian_94, Modragons_91, Llama_93, OfUltron_94, Ochi17_92, Jinglebell_91
- Track 7 : QuickMath_78, Juice456_76
- Track 8 : Oksu_89
- Track 9 : Wachhund_78
- Track 10 : Latretium_76
- Track 11 : Mova_78
- Track 12 : Byougenkin_78
- Track 13 : Bobby_75
- Track 14 : Thibault_74
- Track 15 : KashFlow_72
- Track 16 : Lucky2013_71
- Track 17 : Ariel_73

Summary of Final Annotations (See graph section above for start numbers):

The start number called the most often in the published annotations is 30, it was called in 11 of the 30 non-draft genes in the pham.

Genes that call this "Most Annotated" start:

- Adjutor_82, Butterscotch_82, Chill_85, Erk16_85, Giuseppe_86, Mopey_86, PLOT_85, Penelope2018_84, Thoth_84, Visconti_85, WaldoWhy_85,

Genes that have the "Most Annotated" start but do not call it:

-

Genes that do not have the "Most Annotated" start:

- Ariel_73, Bobby_75, Byougenkin_78, Carlyle_61, Jinglebell_91, Juice456_76, Kamryn_6, KashFlow_72, Latretium_76, Llama_93, Lucky2013_71, Modragons_91, Mova_78, Ochi17_92, OfUltron_94, Oksu_89, QuickMath_78, Sebastian_94, Seanderson_63, Thibault_74, Wachhund_78,

Summary by start number:

Start 2:

- Found in 1 of 32 (3.1%) of genes in pham
- Manual Annotations of this start: 1 of 30
- Called 100.0% of time when present
- Phage (with cluster) where this start called: Latretium_76 (F1),

Start 10:

- Found in 1 of 32 (3.1%) of genes in pham
- Manual Annotations of this start: 1 of 30
- Called 100.0% of time when present
- Phage (with cluster) where this start called: Byougenkin_78 (F1),

Start 17:

- Found in 3 of 32 (9.4%) of genes in pham
- Manual Annotations of this start: 2 of 30
- Called 66.7% of time when present
- Phage (with cluster) where this start called: Juice456_76 (F1), QuickMath_78 (F1),

Start 25:

- Found in 15 of 32 (46.9%) of genes in pham
- Manual Annotations of this start: 11 of 30
- Called 86.7% of time when present
- Phage (with cluster) where this start called: Ariel_73 (J), Bobby_75 (J), Carlyle_61 (A1), Jinglebell_91 (F1), KashFlow_72 (J), Llama_93 (F1), Modragons_91 (F1), Ochi17_92 (F1), OfUltron_94 (F1), Oksu_89 (F1), Sebastian_94 (F1), Seanderson_63 (A1), Thibault_74 (J),

Start 28:

- Found in 4 of 32 (12.5%) of genes in pham
- Manual Annotations of this start: 2 of 30
- Called 50.0% of time when present
- Phage (with cluster) where this start called: Kamryn_6 (C1), Lucky2013_71 (J),

Start 30:

- Found in 11 of 32 (34.4%) of genes in pham
- Manual Annotations of this start: 11 of 30
- Called 100.0% of time when present
- Phage (with cluster) where this start called: Adjutor_82 (D1), Butterscotch_82 (D1), Chill_85 (D1), Erk16_85 (D1), Giuseppe_86 (D1), Mopey_86 (D1), PLOT_85 (D1), Penelope2018_84 (D1), Thoth_84 (D1), Visconti_85 (D1), WaldoWhy_85 (D1),

Start 31:

- Found in 1 of 32 (3.1%) of genes in pham
- Manual Annotations of this start: 1 of 30
- Called 100.0% of time when present
- Phage (with cluster) where this start called: Wachhund_78 (F1),

Start 33:

- Found in 1 of 32 (3.1%) of genes in pham
- Manual Annotations of this start: 1 of 30
- Called 100.0% of time when present
- Phage (with cluster) where this start called: Mova_78 (F1),

Summary by clusters:

There are 5 clusters represented in this pham: A1, F1, C1, J, D1,

Info for manual annotations of cluster A1:

- Start number 25 was manually annotated 2 times for cluster A1.

Info for manual annotations of cluster C1:

- Start number 28 was manually annotated 1 time for cluster C1.

Info for manual annotations of cluster D1:

- Start number 30 was manually annotated 11 times for cluster D1.

Info for manual annotations of cluster F1:

- Start number 2 was manually annotated 1 time for cluster F1.
- Start number 10 was manually annotated 1 time for cluster F1.
- Start number 17 was manually annotated 2 times for cluster F1.
- Start number 25 was manually annotated 5 times for cluster F1.
- Start number 31 was manually annotated 1 time for cluster F1.
- Start number 33 was manually annotated 1 time for cluster F1.

Info for manual annotations of cluster J:

- Start number 25 was manually annotated 4 times for cluster J.
- Start number 28 was manually annotated 1 time for cluster J.

Gene Information:

Gene: Adjutor_82 Start: 59655, Stop: 60050, Start Num: 30

Candidate Starts for Adjutor_82:

(12, 59532), (Start: 30 @59655 has 11 MA's), (37, 59730), (43, 59802), (45, 59835), (47, 59871), (48, 59877), (64, 60009), (65, 60027),

Gene: Ariel_73 Start: 46707, Stop: 46291, Start Num: 25

Candidate Starts for Ariel_73:

(Start: 25 @46707 has 11 MA's), (Start: 28 @46695 has 2 MA's), (36, 46611), (38, 46593), (45, 46515), (47, 46485), (53, 46446), (54, 46443),

Gene: Bobby_75 Start: 51169, Stop: 50789, Start Num: 25

Candidate Starts for Bobby_75:

(Start: 25 @51169 has 11 MA's), (Start: 28 @51157 has 2 MA's), (45, 51022), (46, 50995), (49, 50977), (52, 50950), (59, 50881), (60, 50878), (63, 50842),

Gene: Butterscotch_82 Start: 59706, Stop: 60101, Start Num: 30

Candidate Starts for Butterscotch_82:

(12, 59583), (Start: 30 @59706 has 11 MA's), (37, 59781), (43, 59853), (45, 59886), (47, 59922), (48, 59928), (64, 60060), (65, 60078),

Gene: Byougenkin_78 Start: 46058, Stop: 46567, Start Num: 10

Candidate Starts for Byougenkin_78:

(9, 46055), (Start: 10 @46058 has 1 MA's), (19, 46115), (20, 46118), (21, 46130), (24, 46145), (36, 46235), (42, 46292), (45, 46334), (46, 46361), (49, 46379), (52, 46406), (59, 46475), (60, 46478), (63, 46514),

Gene: Carlyle_61 Start: 39697, Stop: 39242, Start Num: 25

Candidate Starts for Carlyle_61:

(15, 39754), (16, 39751), (Start: 25 @39697 has 11 MA's), (39, 39535), (41, 39532), (45, 39475), (46, 39448), (49, 39430), (52, 39403), (59, 39334), (60, 39331), (63, 39295),

Gene: Chill_85 Start: 59683, Stop: 60078, Start Num: 30

Candidate Starts for Chill_85:

(12, 59560), (Start: 30 @59683 has 11 MA's), (37, 59758), (43, 59830), (45, 59863), (47, 59899), (48, 59905), (64, 60037), (65, 60055),

Gene: Erk16_85 Start: 60039, Stop: 60434, Start Num: 30

Candidate Starts for Erk16_85:

(12, 59916), (14, 59925), (Start: 30 @60039 has 11 MA's), (37, 60114), (43, 60186), (45, 60219), (47, 60255), (48, 60261), (64, 60393), (65, 60411),

Gene: Giuseppe_86 Start: 59752, Stop: 60147, Start Num: 30

Candidate Starts for Giuseppe_86:

(12, 59629), (Start: 30 @59752 has 11 MA's), (37, 59827), (43, 59899), (45, 59932), (47, 59968), (48, 59974), (64, 60106), (65, 60124),

Gene: Jinglebell_91 Start: 50985, Stop: 51386, Start Num: 25

Candidate Starts for Jinglebell_91:

(6, 50862), (22, 50955), (23, 50964), (Start: 25 @50985 has 11 MA's), (45, 51153), (46, 51180), (49, 51198), (52, 51225), (59, 51294), (60, 51297), (63, 51333),

Gene: Juice456_76 Start: 47271, Stop: 47840, Start Num: 17

Candidate Starts for Juice456_76:

(Start: 17 @47271 has 2 MA's), (18, 47274), (26, 47331), (27, 47334), (29, 47346), (45, 47520), (53, 47598), (55, 47610), (56, 47613), (63, 47676), (65, 47706), (70, 47814),

Gene: Kamryn_6 Start: 1771, Stop: 2151, Start Num: 28

Candidate Starts for Kamryn_6:

(Start: 25 @1759 has 11 MA's), (Start: 28 @1771 has 2 MA's), (32, 1819), (34, 1825), (40, 1888), (45, 1942), (53, 2020), (55, 2032), (56, 2035),

Gene: KashFlow_72 Start: 47258, Stop: 46752, Start Num: 25

Candidate Starts for KashFlow_72:

(Start: 25 @47258 has 11 MA's), (44, 47087), (45, 47072), (46, 47045), (49, 47027), (52, 47000), (59, 46931), (60, 46928), (63, 46892), (67, 46811), (68, 46805), (69, 46802),

Gene: Latretium_76 Start: 46342, Stop: 46914, Start Num: 2

Candidate Starts for Latretium_76:

(Start: 2 @46342 has 1 MA's), (9, 46417), (13, 46459), (Start: 17 @46471 has 2 MA's), (18, 46474), (26, 46531), (27, 46534), (29, 46546), (45, 46705), (53, 46783), (55, 46795), (56, 46798), (63, 46861),

(65, 46891), (66, 46909),

Gene: Llama_93 Start: 50841, Stop: 51242, Start Num: 25

Candidate Starts for Llama_93:

(6, 50718), (22, 50811), (23, 50820), (Start: 25 @50841 has 11 MA's), (45, 51009), (46, 51036), (49, 51054), (52, 51081), (59, 51150), (60, 51153), (63, 51189),

Gene: Lucky2013_71 Start: 46711, Stop: 46307, Start Num: 28

Candidate Starts for Lucky2013_71:

(Start: 25 @46723 has 11 MA's), (Start: 28 @46711 has 2 MA's), (36, 46627), (38, 46609), (45, 46531), (47, 46501), (53, 46462), (54, 46459),

Gene: Modragons_91 Start: 50829, Stop: 51230, Start Num: 25

Candidate Starts for Modragons_91:

(6, 50706), (22, 50799), (23, 50808), (Start: 25 @50829 has 11 MA's), (45, 50997), (46, 51024), (49, 51042), (52, 51069), (59, 51138), (60, 51141), (63, 51177),

Gene: Mopey_86 Start: 59779, Stop: 60174, Start Num: 30

Candidate Starts for Mopey_86:

(12, 59656), (Start: 30 @59779 has 11 MA's), (37, 59854), (43, 59926), (45, 59959), (47, 59995), (48, 60001), (64, 60133), (65, 60151),

Gene: Mova_78 Start: 47116, Stop: 47487, Start Num: 33

Candidate Starts for Mova_78:

(Start: 33 @47116 has 1 MA's), (35, 47131), (45, 47251), (46, 47278), (49, 47296), (52, 47323), (59, 47392), (60, 47395), (63, 47431),

Gene: Ochi17_92 Start: 50436, Stop: 50837, Start Num: 25

Candidate Starts for Ochi17_92:

(6, 50313), (22, 50406), (23, 50415), (Start: 25 @50436 has 11 MA's), (45, 50604), (46, 50631), (49, 50649), (52, 50676), (59, 50745), (60, 50748), (63, 50784),

Gene: OfUltron_94 Start: 50985, Stop: 51386, Start Num: 25

Candidate Starts for OfUltron_94:

(6, 50862), (22, 50955), (23, 50964), (Start: 25 @50985 has 11 MA's), (45, 51153), (46, 51180), (49, 51198), (52, 51225), (59, 51294), (60, 51297), (63, 51333),

Gene: Oksu_89 Start: 51566, Stop: 51967, Start Num: 25

Candidate Starts for Oksu_89:

(3, 51392), (4, 51401), (5, 51425), (22, 51536), (23, 51545), (Start: 25 @51566 has 11 MA's), (45, 51734), (46, 51761), (49, 51779), (52, 51806), (59, 51875), (60, 51878), (63, 51914),

Gene: PLOT_85 Start: 59930, Stop: 60325, Start Num: 30

Candidate Starts for PLOT_85:

(12, 59807), (Start: 30 @59930 has 11 MA's), (37, 60005), (43, 60077), (45, 60110), (47, 60146), (48, 60152), (64, 60284), (65, 60302),

Gene: Penelope2018_84 Start: 59705, Stop: 60100, Start Num: 30

Candidate Starts for Penelope2018_84:

(12, 59582), (Start: 30 @59705 has 11 MA's), (37, 59780), (43, 59852), (45, 59885), (47, 59921), (48, 59927), (64, 60059), (65, 60077),

Gene: QuickMath_78 Start: 47623, Stop: 48192, Start Num: 17

Candidate Starts for QuickMath_78:

(Start: 17 @47623 has 2 MA's), (18, 47626), (26, 47683), (27, 47686), (29, 47698), (45, 47872), (53, 47950), (55, 47962), (56, 47965), (63, 48028), (65, 48058), (70, 48166),

Gene: Seabastian_94 Start: 50986, Stop: 51387, Start Num: 25

Candidate Starts for Seabastian_94:

(6, 50863), (22, 50956), (23, 50965), (Start: 25 @50986 has 11 MA's), (45, 51154), (46, 51181), (49, 51199), (52, 51226), (59, 51295), (60, 51298), (63, 51334),

Gene: Seanderson_63 Start: 42839, Stop: 42384, Start Num: 25

Candidate Starts for Seanderson_63:

(1, 43040), (15, 42896), (16, 42893), (Start: 25 @42839 has 11 MA's), (39, 42677), (41, 42674), (45, 42617), (46, 42590), (49, 42572), (52, 42545), (59, 42476), (60, 42473), (63, 42437),

Gene: Thibault_74 Start: 51276, Stop: 51677, Start Num: 25

Candidate Starts for Thibault_74:

(7, 51156), (8, 51159), (11, 51207), (16, 51222), (Start: 25 @51276 has 11 MA's), (45, 51444), (46, 51471), (49, 51489), (52, 51516), (59, 51585), (60, 51588), (63, 51624),

Gene: Thoth_84 Start: 59759, Stop: 60154, Start Num: 30

Candidate Starts for Thoth_84:

(12, 59636), (Start: 30 @59759 has 11 MA's), (37, 59834), (43, 59906), (45, 59939), (47, 59975), (48, 59981), (64, 60113), (65, 60131),

Gene: Visconti_85 Start: 59720, Stop: 60115, Start Num: 30

Candidate Starts for Visconti_85:

(12, 59597), (Start: 30 @59720 has 11 MA's), (37, 59795), (43, 59867), (45, 59900), (47, 59936), (48, 59942), (64, 60074), (65, 60092),

Gene: Wachhund_78 Start: 45999, Stop: 46379, Start Num: 31

Candidate Starts for Wachhund_78:

(Start: 31 @45999 has 1 MA's), (32, 46014), (45, 46149), (50, 46203), (51, 46212), (57, 46260), (58, 46278), (61, 46302), (62, 46320),

Gene: WaldoWhy_85 Start: 59683, Stop: 60078, Start Num: 30

Candidate Starts for WaldoWhy_85:

(12, 59560), (Start: 30 @59683 has 11 MA's), (37, 59758), (43, 59830), (45, 59863), (47, 59899), (48, 59905), (64, 60037), (65, 60055),