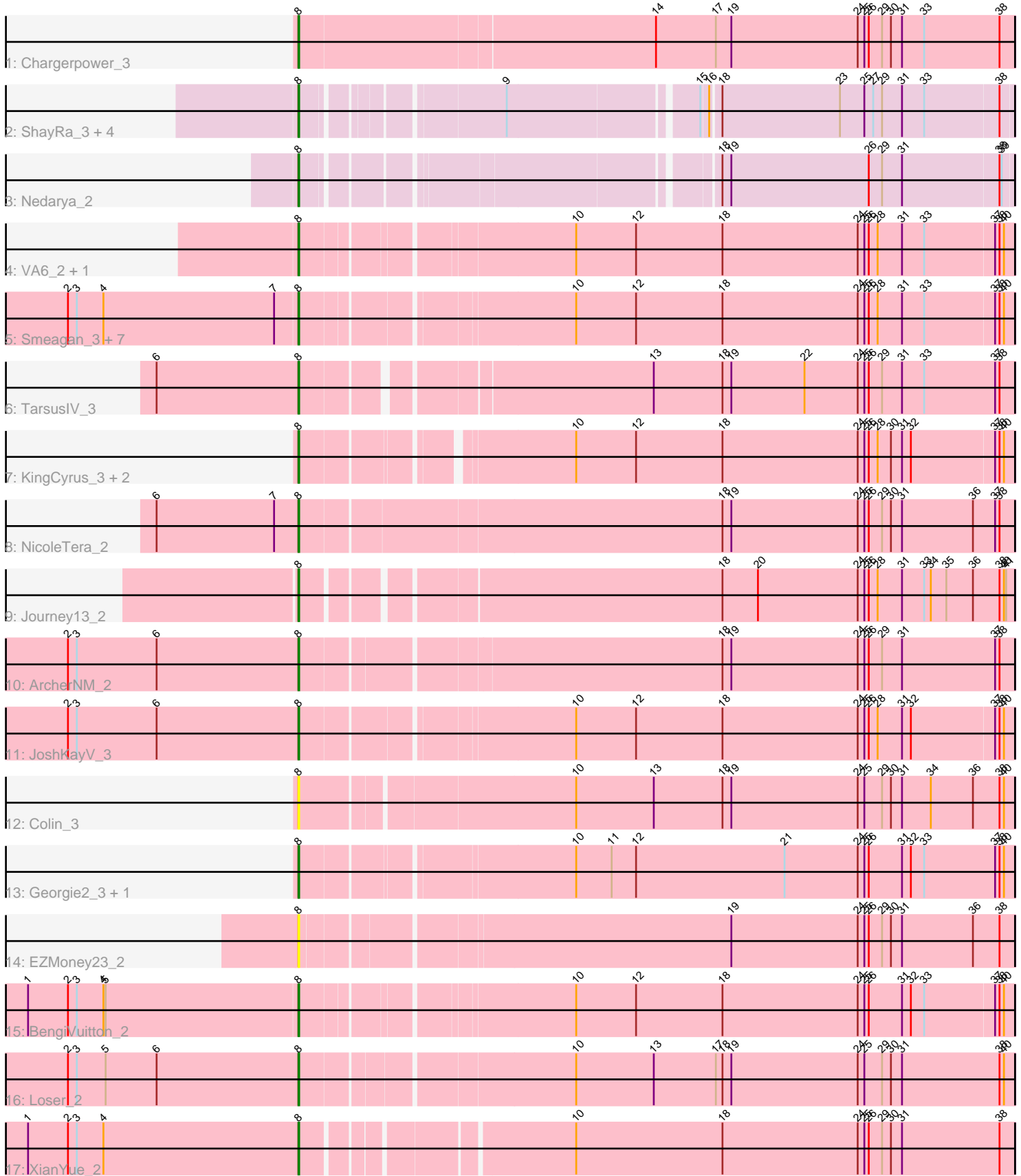


Pham 163814



Note: Tracks are now grouped by subcluster and scaled. Switching in subcluster is indicated by changes in track color. Track scale is now set by default to display the region 30 bp upstream of start 1 to 30 bp downstream of the last possible start. If this default region is judged to be packed too tightly with annotated starts, the track will be further scaled to only show that region of the ORF with annotated starts. This action will be indicated by adding "Zoomed" to the title. For starts, yellow indicates the location of called starts comprised solely of Glimmer/GeneMark auto-annotations, green indicates the location of called starts with at least 1 manual gene annotation.

## Pham 163814 Report

This analysis was run 04/28/24 on database version 559.

Pham number 163814 has 32 members, 2 are drafts.

Phages represented in each track:

- Track 1 : Chargerpower\_3
- Track 2 : ShayRa\_3, JSwag\_2, Nebulosus\_2, Remus\_2, Strosahl\_2
- Track 3 : Nedarya\_2
- Track 4 : VA6\_2, AN3\_2
- Track 5 : Smeagan\_3, Buggy\_3, Agape74\_3, Leviathan\_3, Jerm\_3, Dignity\_3, LilTurb\_3, AbbyPaige\_3
- Track 6 : TarsusIV\_3
- Track 7 : KingCyrus\_3, ChipMunk\_3, EvilGenius\_3
- Track 8 : NicoleTera\_2
- Track 9 : Journey13\_2
- Track 10 : ArcherNM\_2
- Track 11 : JoshKayV\_3
- Track 12 : Colin\_3
- Track 13 : Georgie2\_3, QueenBeesly\_3
- Track 14 : EZMoney23\_2
- Track 15 : BengiVuitton\_2
- Track 16 : Loser\_2
- Track 17 : XianYue\_2

### ***Summary of Final Annotations (See graph section above for start numbers):***

The start number called the most often in the published annotations is 8, it was called in 30 of the 30 non-draft genes in the pham.

Genes that call this "Most Annotated" start:

- AN3\_2, AbbyPaige\_3, Agape74\_3, ArcherNM\_2, BengiVuitton\_2, Buggy\_3, Chargerpower\_3, ChipMunk\_3, Colin\_3, Dignity\_3, EZMoney23\_2, EvilGenius\_3, Georgie2\_3, JSwag\_2, Jerm\_3, JoshKayV\_3, Journey13\_2, KingCyrus\_3, Leviathan\_3, LilTurb\_3, Loser\_2, Nebulosus\_2, Nedarya\_2, NicoleTera\_2, QueenBeesly\_3, Remus\_2, ShayRa\_3, Smeagan\_3, Strosahl\_2, TarsusIV\_3, VA6\_2, XianYue\_2,

Genes that have the "Most Annotated" start but do not call it:

-

Genes that do not have the "Most Annotated" start:

- 

### Summary by start number:

Start 8:

- Found in 32 of 32 ( 100.0% ) of genes in pham
- Manual Annotations of this start: 30 of 30
- Called 100.0% of time when present
- Phage (with cluster) where this start called: AN3\_2 (A2), AbbyPaige\_3 (A2), Agape74\_3 (A2), ArcherNM\_2 (A2), BengiVuitton\_2 (A2), Buggy\_3 (A2), Chargerpower\_3 (A), ChipMunk\_3 (A2), Colin\_3 (A2), Dignity\_3 (A2), EZMoney23\_2 (A2), EvilGenius\_3 (A2), Georgie2\_3 (A2), JSwag\_2 (A15), Jerm\_3 (A2), JoshKayV\_3 (A2), Journey13\_2 (A2), KingCyrus\_3 (A2), Leviathan\_3 (A2), LilTurb\_3 (A2), Loser\_2 (A2), Nebulosus\_2 (A15), Nedarya\_2 (A15), NicoleTera\_2 (A2), QueenBeesly\_3 (A2), Remus\_2 (A15), ShayRa\_3 (A15), Smeagan\_3 (A2), Strosahl\_2 (A15), TarsusIV\_3 (A2), VA6\_2 (A2), XianYue\_2 (A2),

### Summary by clusters:

There are 3 clusters represented in this pham: A, A15, A2,

Info for manual annotations of cluster A:

- Start number 8 was manually annotated 1 time for cluster A.

Info for manual annotations of cluster A15:

- Start number 8 was manually annotated 6 times for cluster A15.

Info for manual annotations of cluster A2:

- Start number 8 was manually annotated 23 times for cluster A2.

### Gene Information:

Gene: AN3\_2 Start: 1236, Stop: 2165, Start Num: 8

Candidate Starts for AN3\_2:

(Start: 8 @1236 has 30 MA's), (10, 1575), (12, 1656), (18, 1773), (24, 1956), (25, 1965), (26, 1971), (28, 1983), (31, 2016), (33, 2046), (37, 2139), (38, 2145), (40, 2151),

Gene: AbbyPaige\_3 Start: 1310, Stop: 2239, Start Num: 8

Candidate Starts for AbbyPaige\_3:

(2, 1001), (3, 1013), (4, 1049), (7, 1280), (Start: 8 @1310 has 30 MA's), (10, 1649), (12, 1730), (18, 1847), (24, 2030), (25, 2039), (26, 2045), (28, 2057), (31, 2090), (33, 2120), (37, 2213), (38, 2219), (40, 2225),

Gene: Agape74\_3 Start: 1310, Stop: 2239, Start Num: 8

Candidate Starts for Agape74\_3:

(2, 1001), (3, 1013), (4, 1049), (7, 1280), (Start: 8 @1310 has 30 MA's), (10, 1649), (12, 1730), (18, 1847), (24, 2030), (25, 2039), (26, 2045), (28, 2057), (31, 2090), (33, 2120), (37, 2213), (38, 2219), (40, 2225),

Gene: ArcherNM\_2 Start: 1062, Stop: 2000, Start Num: 8

Candidate Starts for ArcherNM\_2:

(2, 750), (3, 762), (6, 870), (Start: 8 @1062 has 30 MA's), (18, 1605), (19, 1617), (24, 1788), (25, 1797), (26, 1803), (29, 1821), (31, 1848), (37, 1974), (38, 1980),

Gene: BengiVuitton\_2 Start: 1100, Stop: 2026, Start Num: 8

Candidate Starts for BengiVuitton\_2:

(1, 737), (2, 791), (3, 803), (4, 839), (5, 842), (Start: 8 @1100 has 30 MA's), (10, 1436), (12, 1517), (18, 1634), (24, 1817), (25, 1826), (26, 1832), (31, 1877), (32, 1889), (33, 1907), (37, 2000), (38, 2006), (40, 2012),

Gene: Buggy\_3 Start: 1321, Stop: 2250, Start Num: 8

Candidate Starts for Buggy\_3:

(2, 1012), (3, 1024), (4, 1060), (7, 1291), (Start: 8 @1321 has 30 MA's), (10, 1660), (12, 1741), (18, 1858), (24, 2041), (25, 2050), (26, 2056), (28, 2068), (31, 2101), (33, 2131), (37, 2224), (38, 2230), (40, 2236),

Gene: Chargerpower\_3 Start: 1175, Stop: 2131, Start Num: 8

Candidate Starts for Chargerpower\_3:

(Start: 8 @1175 has 30 MA's), (14, 1646), (17, 1727), (19, 1748), (24, 1919), (25, 1928), (26, 1934), (29, 1952), (30, 1964), (31, 1979), (33, 2009), (38, 2111),

Gene: ChipMunk\_3 Start: 1331, Stop: 2260, Start Num: 8

Candidate Starts for ChipMunk\_3:

(Start: 8 @1331 has 30 MA's), (10, 1670), (12, 1751), (18, 1868), (24, 2051), (25, 2060), (26, 2066), (28, 2078), (30, 2096), (31, 2111), (32, 2123), (37, 2234), (38, 2240), (40, 2246),

Gene: Colin\_3 Start: 1197, Stop: 2141, Start Num: 8

Candidate Starts for Colin\_3:

(Start: 8 @1197 has 30 MA's), (10, 1548), (13, 1653), (18, 1746), (19, 1758), (24, 1929), (25, 1938), (29, 1962), (30, 1974), (31, 1989), (34, 2028), (36, 2085), (38, 2121), (40, 2127),

Gene: Dignity\_3 Start: 1322, Stop: 2248, Start Num: 8

Candidate Starts for Dignity\_3:

(2, 1013), (3, 1025), (4, 1061), (7, 1292), (Start: 8 @1322 has 30 MA's), (10, 1658), (12, 1739), (18, 1856), (24, 2039), (25, 2048), (26, 2054), (28, 2066), (31, 2099), (33, 2129), (37, 2222), (38, 2228), (40, 2234),

Gene: EZMoney23\_2 Start: 1067, Stop: 2002, Start Num: 8

Candidate Starts for EZMoney23\_2:

(Start: 8 @1067 has 30 MA's), (19, 1619), (24, 1790), (25, 1799), (26, 1805), (29, 1823), (30, 1835), (31, 1850), (36, 1946), (38, 1982),

Gene: EvilGenius\_3 Start: 1331, Stop: 2260, Start Num: 8

Candidate Starts for EvilGenius\_3:

(Start: 8 @1331 has 30 MA's), (10, 1670), (12, 1751), (18, 1868), (24, 2051), (25, 2060), (26, 2066), (28, 2078), (30, 2096), (31, 2111), (32, 2123), (37, 2234), (38, 2240), (40, 2246),

Gene: Georgie2\_3 Start: 1336, Stop: 2271, Start Num: 8

Candidate Starts for Georgie2\_3:

(Start: 8 @1336 has 30 MA's), (10, 1678), (11, 1726), (12, 1759), (21, 1960), (24, 2059), (25, 2068), (26, 2074), (31, 2119), (32, 2131), (33, 2149), (37, 2245), (38, 2251), (40, 2257),

Gene: JSwag\_2 Start: 1098, Stop: 1985, Start Num: 8

Candidate Starts for JSwag\_2:

(Start: 8 @1098 has 30 MA's), (9, 1335), (15, 1575), (16, 1584), (18, 1596), (23, 1755), (25, 1788), (27, 1800), (29, 1812), (31, 1839), (33, 1869), (38, 1968),

Gene: Jerm\_3 Start: 1320, Stop: 2249, Start Num: 8

Candidate Starts for Jerm\_3:

(2, 1011), (3, 1023), (4, 1059), (7, 1290), (Start: 8 @1320 has 30 MA's), (10, 1659), (12, 1740), (18, 1857), (24, 2040), (25, 2049), (26, 2055), (28, 2067), (31, 2100), (33, 2130), (37, 2223), (38, 2229), (40, 2235),

Gene: JoshKayV\_3 Start: 1332, Stop: 2264, Start Num: 8

Candidate Starts for JoshKayV\_3:

(2, 1020), (3, 1032), (6, 1140), (Start: 8 @1332 has 30 MA's), (10, 1674), (12, 1755), (18, 1872), (24, 2055), (25, 2064), (26, 2070), (28, 2082), (31, 2115), (32, 2127), (37, 2238), (38, 2244), (40, 2250),

Gene: Journey13\_2 Start: 1187, Stop: 2110, Start Num: 8

Candidate Starts for Journey13\_2:

(Start: 8 @1187 has 30 MA's), (18, 1715), (20, 1763), (24, 1898), (25, 1907), (26, 1913), (28, 1925), (31, 1958), (33, 1988), (34, 1997), (35, 2018), (36, 2054), (38, 2090), (40, 2096), (41, 2099),

Gene: KingCyrus\_3 Start: 1332, Stop: 2249, Start Num: 8

Candidate Starts for KingCyrus\_3:

(Start: 8 @1332 has 30 MA's), (10, 1659), (12, 1740), (18, 1857), (24, 2040), (25, 2049), (26, 2055), (28, 2067), (30, 2085), (31, 2100), (32, 2112), (37, 2223), (38, 2229), (40, 2235),

Gene: Leviathan\_3 Start: 1322, Stop: 2248, Start Num: 8

Candidate Starts for Leviathan\_3:

(2, 1013), (3, 1025), (4, 1061), (7, 1292), (Start: 8 @1322 has 30 MA's), (10, 1658), (12, 1739), (18, 1856), (24, 2039), (25, 2048), (26, 2054), (28, 2066), (31, 2099), (33, 2129), (37, 2222), (38, 2228), (40, 2234),

Gene: LilTurb\_3 Start: 1320, Stop: 2249, Start Num: 8

Candidate Starts for LilTurb\_3:

(2, 1011), (3, 1023), (4, 1059), (7, 1290), (Start: 8 @1320 has 30 MA's), (10, 1659), (12, 1740), (18, 1857), (24, 2040), (25, 2049), (26, 2055), (28, 2067), (31, 2100), (33, 2130), (37, 2223), (38, 2229), (40, 2235),

Gene: Loser\_2 Start: 1040, Stop: 1978, Start Num: 8

Candidate Starts for Loser\_2:

(2, 728), (3, 740), (5, 779), (6, 848), (Start: 8 @1040 has 30 MA's), (10, 1385), (13, 1490), (17, 1574), (18, 1583), (19, 1595), (24, 1766), (25, 1775), (29, 1799), (30, 1811), (31, 1826), (38, 1958), (40, 1964),

Gene: Nebulosus\_2 Start: 1098, Stop: 1985, Start Num: 8

Candidate Starts for Nebulosus\_2:

(Start: 8 @1098 has 30 MA's), (9, 1335), (15, 1575), (16, 1584), (18, 1596), (23, 1755), (25, 1788), (27, 1800), (29, 1812), (31, 1839), (33, 1869), (38, 1968),

Gene: Nedarya\_2 Start: 1067, Stop: 1954, Start Num: 8

Candidate Starts for Nedarya\_2:

(Start: 8 @1067 has 30 MA's), (18, 1565), (19, 1577), (26, 1763), (29, 1781), (31, 1808), (38, 1937), (39, 1940),

Gene: NicoleTera\_2 Start: 1072, Stop: 2022, Start Num: 8

Candidate Starts for NicoleTera\_2:

(6, 880), (7, 1039), (Start: 8 @1072 has 30 MA's), (18, 1627), (19, 1639), (24, 1810), (25, 1819), (26, 1825), (29, 1843), (30, 1855), (31, 1870), (36, 1966), (37, 1996), (38, 2002),

Gene: QueenBeesly\_3 Start: 1337, Stop: 2269, Start Num: 8

Candidate Starts for QueenBeesly\_3:

(Start: 8 @1337 has 30 MA's), (10, 1676), (11, 1724), (12, 1757), (21, 1958), (24, 2057), (25, 2066), (26, 2072), (31, 2117), (32, 2129), (33, 2147), (37, 2243), (38, 2249), (40, 2255),

Gene: Remus\_2 Start: 1098, Stop: 1985, Start Num: 8

Candidate Starts for Remus\_2:

(Start: 8 @1098 has 30 MA's), (9, 1335), (15, 1575), (16, 1584), (18, 1596), (23, 1755), (25, 1788), (27, 1800), (29, 1812), (31, 1839), (33, 1869), (38, 1968),

Gene: ShayRa\_3 Start: 1245, Stop: 2132, Start Num: 8

Candidate Starts for ShayRa\_3:

(Start: 8 @1245 has 30 MA's), (9, 1482), (15, 1722), (16, 1731), (18, 1743), (23, 1902), (25, 1935), (27, 1947), (29, 1959), (31, 1986), (33, 2016), (38, 2115),

Gene: Smeagan\_3 Start: 1322, Stop: 2251, Start Num: 8

Candidate Starts for Smeagan\_3:

(2, 1013), (3, 1025), (4, 1061), (7, 1292), (Start: 8 @1322 has 30 MA's), (10, 1661), (12, 1742), (18, 1859), (24, 2042), (25, 2051), (26, 2057), (28, 2069), (31, 2102), (33, 2132), (37, 2225), (38, 2231), (40, 2237),

Gene: Strosahl\_2 Start: 1098, Stop: 1985, Start Num: 8

Candidate Starts for Strosahl\_2:

(Start: 8 @1098 has 30 MA's), (9, 1335), (15, 1575), (16, 1584), (18, 1596), (23, 1755), (25, 1788), (27, 1800), (29, 1812), (31, 1839), (33, 1869), (38, 1968),

Gene: TarsusIV\_3 Start: 1331, Stop: 2254, Start Num: 8

Candidate Starts for TarsusIV\_3:

(6, 1139), (Start: 8 @1331 has 30 MA's), (13, 1766), (18, 1859), (19, 1871), (22, 1970), (24, 2042), (25, 2051), (26, 2057), (29, 2075), (31, 2102), (33, 2132), (37, 2228), (38, 2234),

Gene: VA6\_2 Start: 1236, Stop: 2165, Start Num: 8

Candidate Starts for VA6\_2:

(Start: 8 @1236 has 30 MA's), (10, 1575), (12, 1656), (18, 1773), (24, 1956), (25, 1965), (26, 1971), (28, 1983), (31, 2016), (33, 2046), (37, 2139), (38, 2145), (40, 2151),

Gene: XianYue\_2 Start: 1178, Stop: 2098, Start Num: 8

Candidate Starts for XianYue\_2:

(1, 812), (2, 866), (3, 878), (4, 914), (Start: 8 @1178 has 30 MA's), (10, 1505), (18, 1703), (24, 1886), (25, 1895), (26, 1901), (29, 1919), (30, 1931), (31, 1946), (38, 2078),