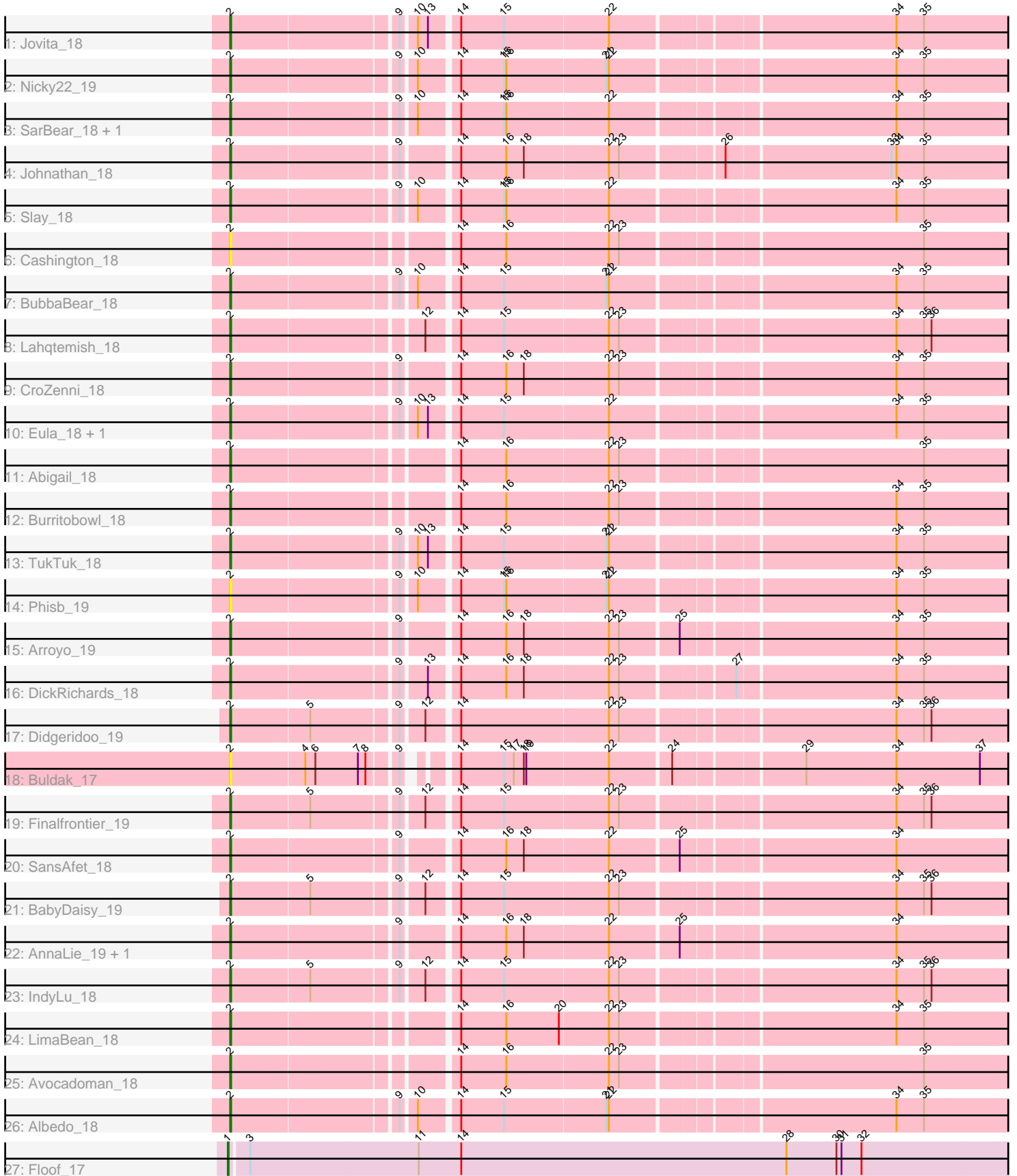


# Zoomed Pham 163832



Note: Tracks are now grouped by subcluster and scaled. Switching in subcluster is indicated by changes in track color. Track scale is now set by default to display the region 30 bp upstream of start 1 to 30 bp downstream of the last possible start. If this default region is judged to be packed too tightly with annotated starts, the track will be further scaled to only show that region of the ORF with annotated starts. This action will be indicated by adding "Zoomed" to the title. For starts, yellow indicates the location of called starts comprised solely of Glimmer/GeneMark auto-annotations, green indicates the location of called starts with at least 1 manual gene annotation.

## Pham 163832 Report

This analysis was run 04/28/24 on database version 559.

Pham number 163832 has 30 members, 3 are drafts.

Phages represented in each track:

- Track 1 : Jovita\_18
- Track 2 : Nicky22\_19
- Track 3 : SarBear\_18, Swervy\_18
- Track 4 : Johnathan\_18
- Track 5 : Slay\_18
- Track 6 : Cashington\_18
- Track 7 : BubbaBear\_18
- Track 8 : Lahqtemish\_18
- Track 9 : CroZenni\_18
- Track 10 : Eula\_18, QMacho\_19
- Track 11 : Abigail\_18
- Track 12 : Burritobowl\_18
- Track 13 : TukTuk\_18
- Track 14 : Phisb\_19
- Track 15 : Arroyo\_19
- Track 16 : DickRichards\_18
- Track 17 : Didgeridoo\_19
- Track 18 : Buldak\_17
- Track 19 : Finalfrontier\_19
- Track 20 : SansAfet\_18
- Track 21 : BabyDaisy\_19
- Track 22 : AnnaLie\_19, BelmontSKP\_19
- Track 23 : IndyLu\_18
- Track 24 : LimaBean\_18
- Track 25 : Avocadoman\_18
- Track 26 : Albedo\_18
- Track 27 : Floof\_17

### ***Summary of Final Annotations (See graph section above for start numbers):***

The start number called the most often in the published annotations is 2, it was called in 26 of the 27 non-draft genes in the pham.

Genes that call this "Most Annotated" start:

- Abigail\_18, Albedo\_18, AnnaLie\_19, Arroyo\_19, Avocadoman\_18, BabyDaisy\_19, BelmontSKP\_19, BubbaBear\_18, Buldak\_17, Burritobowl\_18, Cashington\_18, CroZenni\_18, DickRichards\_18, Didgeridoo\_19, Eula\_18, Finalfrontier\_19, IndyLu\_18, Johnathan\_18, Jovita\_18, Lahqtemish\_18, LimaBean\_18, Nicky22\_19, Phisb\_19, QMacho\_19, SansAfet\_18, SarBear\_18, Slay\_18, Swervy\_18, TukTuk\_18,

Genes that have the "Most Annotated" start but do not call it:

- 

Genes that do not have the "Most Annotated" start:

- Floof\_17,

### Summary by start number:

Start 1:

- Found in 1 of 30 ( 3.3% ) of genes in pham
- Manual Annotations of this start: 1 of 27
- Called 100.0% of time when present
- Phage (with cluster) where this start called: Floof\_17 (EH),

Start 2:

- Found in 29 of 30 ( 96.7% ) of genes in pham
- Manual Annotations of this start: 26 of 27
- Called 100.0% of time when present
- Phage (with cluster) where this start called: Abigail\_18 (EB), Albedo\_18 (EB), AnnaLie\_19 (EB), Arroyo\_19 (EB), Avocadoman\_18 (EB), BabyDaisy\_19 (EB), BelmontSKP\_19 (EB), BubbaBear\_18 (EB), Buldak\_17 (EB), Burritobowl\_18 (EB), Cashington\_18 (EB), CroZenni\_18 (EB), DickRichards\_18 (EB), Didgeridoo\_19 (EB), Eula\_18 (EB), Finalfrontier\_19 (EB), IndyLu\_18 (EB), Johnathan\_18 (EB), Jovita\_18 (EB), Lahqtemish\_18 (EB), LimaBean\_18 (EB), Nicky22\_19 (EB), Phisb\_19 (EB), QMacho\_19 (EB), SansAfet\_18 (EB), SarBear\_18 (EB), Slay\_18 (EB), Swervy\_18 (EB), TukTuk\_18 (EB),

### Summary by clusters:

There are 2 clusters represented in this pham: EH, EB,

Info for manual annotations of cluster EB:

- Start number 2 was manually annotated 26 times for cluster EB.

Info for manual annotations of cluster EH:

- Start number 1 was manually annotated 1 time for cluster EH.

### Gene Information:

Gene: Abigail\_18 Start: 14117, Stop: 16090, Start Num: 2

Candidate Starts for Abigail\_18:

(Start: 2 @14117 has 26 MA's), (14, 14363), (16, 14417), (22, 14537), (23, 14549), (35, 14888), (40, 15050), (43, 15116), (46, 15158), (50, 15215), (65, 15470), (67, 15494), (69, 15515), (74, 15554), (77, 15680), (83, 15839), (85, 15863), (92, 15926), (94, 15959), (99, 16058), (100, 16064),

Gene: Albedo\_18 Start: 13985, Stop: 15955, Start Num: 2

Candidate Starts for Albedo\_18:

(Start: 2 @13985 has 26 MA's), (9, 14174), (10, 14189), (14, 14231), (15, 14282), (21, 14402), (22, 14405), (34, 14723), (35, 14756), (43, 14984), (46, 15026), (58, 15245), (63, 15284), (67, 15359), (70, 15401), (80, 15629), (83, 15704), (89, 15749), (94, 15824), (95, 15833), (97, 15887), (100, 15929),

Gene: AnnaLie\_19 Start: 14304, Stop: 16274, Start Num: 2

Candidate Starts for AnnaLie\_19:

(Start: 2 @14304 has 26 MA's), (9, 14493), (14, 14550), (16, 14604), (18, 14625), (22, 14724), (25, 14802), (34, 15042), (43, 15303), (46, 15345), (50, 15402), (67, 15678), (70, 15720), (80, 15948), (83, 16023), (85, 16047), (89, 16068), (91, 16107), (94, 16143), (96, 16182), (97, 16206), (100, 16248),

Gene: Arroyo\_19 Start: 14505, Stop: 16475, Start Num: 2

Candidate Starts for Arroyo\_19:

(Start: 2 @14505 has 26 MA's), (9, 14694), (14, 14751), (16, 14805), (18, 14826), (22, 14925), (23, 14937), (25, 15003), (34, 15243), (35, 15276), (43, 15504), (46, 15546), (50, 15603), (65, 15855), (67, 15879), (70, 15921), (80, 16149), (83, 16224), (85, 16248), (89, 16269), (91, 16308), (94, 16344), (96, 16383), (97, 16407), (100, 16449),

Gene: Avocadoman\_18 Start: 14060, Stop: 16033, Start Num: 2

Candidate Starts for Avocadoman\_18:

(Start: 2 @14060 has 26 MA's), (14, 14306), (16, 14360), (22, 14480), (23, 14492), (35, 14831), (40, 14993), (43, 15059), (46, 15101), (50, 15158), (65, 15413), (67, 15437), (69, 15458), (74, 15497), (80, 15707), (81, 15737), (83, 15782), (85, 15806), (92, 15869), (94, 15902), (99, 16001), (100, 16007),

Gene: BabyDaisy\_19 Start: 14120, Stop: 16090, Start Num: 2

Candidate Starts for BabyDaisy\_19:

(Start: 2 @14120 has 26 MA's), (5, 14213), (9, 14309), (12, 14333), (14, 14366), (15, 14417), (22, 14540), (23, 14552), (34, 14858), (35, 14891), (36, 14900), (43, 15119), (46, 15161), (54, 15275), (59, 15380), (66, 15479), (67, 15494), (80, 15764), (81, 15794), (83, 15839), (92, 15926), (99, 16058), (100, 16064),

Gene: BelmontSKP\_19 Start: 14304, Stop: 16274, Start Num: 2

Candidate Starts for BelmontSKP\_19:

(Start: 2 @14304 has 26 MA's), (9, 14493), (14, 14550), (16, 14604), (18, 14625), (22, 14724), (25, 14802), (34, 15042), (43, 15303), (46, 15345), (50, 15402), (67, 15678), (70, 15720), (80, 15948), (83, 16023), (85, 16047), (89, 16068), (91, 16107), (94, 16143), (96, 16182), (97, 16206), (100, 16248),

Gene: BubbaBear\_18 Start: 13985, Stop: 15955, Start Num: 2

Candidate Starts for BubbaBear\_18:

(Start: 2 @13985 has 26 MA's), (9, 14174), (10, 14189), (14, 14231), (15, 14282), (21, 14402), (22, 14405), (34, 14723), (35, 14756), (43, 14984), (46, 15026), (55, 15161), (58, 15245), (63, 15284), (67, 15359), (70, 15401), (80, 15629), (83, 15704), (89, 15749), (94, 15824), (95, 15833), (97, 15887), (100, 15929),

Gene: Buldak\_17 Start: 13900, Stop: 15591, Start Num: 2

Candidate Starts for Buldak\_17:

(Start: 2 @13900 has 26 MA's), (4, 13987), (6, 13999), (7, 14050), (8, 14059), (9, 14089), (14, 14128), (15, 14179), (17, 14191), (18, 14203), (19, 14206), (22, 14302), (24, 14371), (29, 14512), (34, 14620), (37, 14719), (39, 14800), (40, 14815), (41, 14818), (43, 14881), (45, 14914), (46, 14923), (52, 15004), (53, 15025), (56, 15058), (57, 15070), (61, 15151), (64, 15181), (68, 15256), (71, 15283), (76, 15367), (78, 15430), (79, 15433), (84, 15565),

Gene: Burritobowl\_18 Start: 14063, Stop: 16033, Start Num: 2

Candidate Starts for Burritobowl\_18:

(Start: 2 @14063 has 26 MA's), (14, 14309), (16, 14363), (22, 14483), (23, 14495), (34, 14801), (35, 14834), (40, 14996), (43, 15062), (46, 15104), (50, 15161), (58, 15323), (65, 15413), (70, 15479), (72, 15485), (80, 15707), (81, 15737), (83, 15782), (85, 15806), (92, 15869), (94, 15902), (99, 16001), (100, 16007),

Gene: Cashington\_18 Start: 13912, Stop: 15882, Start Num: 2

Candidate Starts for Cashington\_18:

(Start: 2 @13912 has 26 MA's), (14, 14158), (16, 14212), (22, 14332), (23, 14344), (35, 14683), (40, 14845), (43, 14911), (46, 14953), (50, 15010), (58, 15172), (60, 15184), (66, 15271), (67, 15286), (80, 15556), (81, 15586), (83, 15631), (87, 15661), (92, 15718), (94, 15751), (99, 15850), (100, 15856),

Gene: CroZenni\_18 Start: 13895, Stop: 15865, Start Num: 2

Candidate Starts for CroZenni\_18:

(Start: 2 @13895 has 26 MA's), (9, 14084), (14, 14141), (16, 14195), (18, 14216), (22, 14315), (23, 14327), (34, 14633), (35, 14666), (43, 14894), (46, 14936), (50, 14993), (66, 15254), (67, 15269), (80, 15539), (83, 15614), (85, 15638), (89, 15659), (91, 15698), (96, 15773), (97, 15797), (100, 15839),

Gene: DickRichards\_18 Start: 14390, Stop: 16360, Start Num: 2

Candidate Starts for DickRichards\_18:

(Start: 2 @14390 has 26 MA's), (9, 14579), (13, 14606), (14, 14636), (16, 14690), (18, 14711), (22, 14810), (23, 14822), (27, 14945), (34, 15128), (35, 15161), (43, 15389), (46, 15431), (67, 15764), (70, 15806), (77, 15950), (80, 16034), (83, 16109), (85, 16133), (89, 16154), (91, 16193), (94, 16229), (96, 16268), (97, 16292), (100, 16334),

Gene: Didgeridoo\_19 Start: 14122, Stop: 16092, Start Num: 2

Candidate Starts for Didgeridoo\_19:

(Start: 2 @14122 has 26 MA's), (5, 14215), (9, 14311), (12, 14335), (14, 14368), (22, 14542), (23, 14554), (34, 14860), (35, 14893), (36, 14902), (43, 15121), (46, 15163), (55, 15298), (66, 15481), (67, 15496), (80, 15766), (81, 15796), (83, 15841), (92, 15928), (99, 16060), (100, 16066),

Gene: Eula\_18 Start: 13973, Stop: 15943, Start Num: 2

Candidate Starts for Eula\_18:

(Start: 2 @13973 has 26 MA's), (9, 14162), (10, 14177), (13, 14189), (14, 14219), (15, 14270), (22, 14393), (34, 14711), (35, 14744), (43, 14972), (54, 15128), (55, 15149), (58, 15233), (63, 15272), (67, 15347), (70, 15389), (83, 15692), (89, 15737), (90, 15764), (94, 15812), (95, 15821), (97, 15875), (100, 15917),

Gene: Finalfrontier\_19 Start: 14486, Stop: 16459, Start Num: 2

Candidate Starts for Finalfrontier\_19:

(Start: 2 @14486 has 26 MA's), (5, 14579), (9, 14675), (12, 14699), (14, 14732), (15, 14783), (22, 14906), (23, 14918), (34, 15224), (35, 15257), (36, 15266), (43, 15485), (46, 15527), (54, 15641), (55, 15662), (63, 15785), (67, 15863), (72, 15911), (77, 16049), (83, 16208), (85, 16232), (92, 16295), (99, 16427), (100, 16433),

Gene: Floof\_17 Start: 13331, Stop: 15664, Start Num: 1

Candidate Starts for Floof\_17:

(Start: 1 @13331 has 1 MA's), (3, 13352), (11, 13553), (14, 13604), (28, 13994), (30, 14054), (31, 14060), (32, 14084), (38, 14285), (42, 14345), (44, 14390), (45, 14420), (47, 14441), (49, 14465), (51, 14498), (66, 14795), (70, 14852), (75, 14918), (82, 15158), (86, 15203), (88, 15215), (93, 15293), (98, 15392), (101, 15410), (102, 15431), (103, 15494), (104, 15560), (105, 15581), (106, 15638),

Gene: IndyLu\_18 Start: 13944, Stop: 15914, Start Num: 2

Candidate Starts for IndyLu\_18:

(Start: 2 @13944 has 26 MA's), (5, 14037), (9, 14133), (12, 14157), (14, 14190), (15, 14241), (22, 14364), (23, 14376), (34, 14682), (35, 14715), (36, 14724), (43, 14943), (54, 15099), (55, 15120), (58, 15204), (65, 15294), (69, 15339), (77, 15504), (83, 15663), (85, 15687), (92, 15750), (94, 15783), (100, 15888),

Gene: Johnathan\_18 Start: 13999, Stop: 15969, Start Num: 2

Candidate Starts for Johnathan\_18:

(Start: 2 @13999 has 26 MA's), (9, 14188), (14, 14245), (16, 14299), (18, 14320), (22, 14419), (23, 14431), (26, 14542), (33, 14731), (34, 14737), (35, 14770), (43, 14998), (46, 15040), (65, 15349), (69, 15394), (80, 15643), (83, 15718), (88, 15757), (89, 15763), (92, 15805), (95, 15847), (97, 15901), (100, 15943),

Gene: Jovita\_18 Start: 14074, Stop: 16047, Start Num: 2

Candidate Starts for Jovita\_18:

(Start: 2 @14074 has 26 MA's), (9, 14263), (10, 14278), (13, 14290), (14, 14320), (15, 14371), (22, 14494), (34, 14812), (35, 14845), (43, 15073), (46, 15115), (54, 15229), (55, 15250), (58, 15334), (72, 15499), (83, 15796), (89, 15841), (90, 15868), (94, 15916), (95, 15925), (97, 15979), (100, 16021),

Gene: Lahqtemish\_18 Start: 13989, Stop: 15962, Start Num: 2

Candidate Starts for Lahqtemish\_18:

(Start: 2 @13989 has 26 MA's), (12, 14202), (14, 14235), (15, 14286), (22, 14409), (23, 14421), (34, 14727), (35, 14760), (36, 14769), (43, 14988), (46, 15030), (55, 15165), (58, 15249), (65, 15342), (67, 15366), (69, 15387), (74, 15426), (77, 15552), (83, 15711), (85, 15735), (93, 15828), (94, 15831), (100, 15936),

Gene: LimaBean\_18 Start: 13998, Stop: 15968, Start Num: 2

Candidate Starts for LimaBean\_18:

(Start: 2 @13998 has 26 MA's), (14, 14244), (16, 14298), (20, 14361), (22, 14418), (23, 14430), (34, 14736), (35, 14769), (40, 14931), (43, 14997), (46, 15039), (50, 15096), (58, 15258), (60, 15270), (66, 15357), (67, 15372), (80, 15642), (81, 15672), (83, 15717), (87, 15747), (92, 15804), (94, 15837), (99, 15936), (100, 15942),

Gene: Nicky22\_19 Start: 14417, Stop: 16390, Start Num: 2

Candidate Starts for Nicky22\_19:

(Start: 2 @14417 has 26 MA's), (9, 14606), (10, 14621), (14, 14663), (15, 14714), (16, 14717), (21, 14834), (22, 14837), (34, 15155), (35, 15188), (43, 15416), (46, 15458), (55, 15593), (58, 15677), (72, 15842), (73, 15848), (77, 15980), (83, 16139), (89, 16184), (90, 16211), (94, 16259), (95, 16268), (97, 16322), (100, 16364),

Gene: Phisb\_19 Start: 13986, Stop: 15956, Start Num: 2

Candidate Starts for Phisb\_19:

(Start: 2 @13986 has 26 MA's), (9, 14175), (10, 14190), (14, 14232), (15, 14283), (16, 14286), (21, 14403), (22, 14406), (34, 14724), (35, 14757), (43, 14985), (46, 15027), (55, 15162), (58, 15246), (63, 15285), (67, 15360), (70, 15402), (80, 15630), (83, 15705), (89, 15750), (94, 15825), (95, 15834), (97, 15888), (100, 15930),

Gene: QMacho\_19 Start: 14456, Stop: 16426, Start Num: 2

Candidate Starts for QMacho\_19:

(Start: 2 @14456 has 26 MA's), (9, 14645), (10, 14660), (13, 14672), (14, 14702), (15, 14753), (22, 14876), (34, 15194), (35, 15227), (43, 15455), (54, 15611), (55, 15632), (58, 15716), (63, 15755), (67, 15830), (70, 15872), (83, 16175), (89, 16220), (90, 16247), (94, 16295), (95, 16304), (97, 16358),

(100, 16400),

Gene: SansAfet\_18 Start: 13906, Stop: 15876, Start Num: 2

Candidate Starts for SansAfet\_18:

(Start: 2 @13906 has 26 MA's), (9, 14095), (14, 14152), (16, 14206), (18, 14227), (22, 14326), (25, 14404), (34, 14644), (43, 14905), (46, 14947), (50, 15004), (67, 15280), (70, 15322), (83, 15625), (85, 15649), (89, 15670), (91, 15709), (94, 15745), (96, 15784), (97, 15808), (100, 15850),

Gene: SarBear\_18 Start: 13951, Stop: 15924, Start Num: 2

Candidate Starts for SarBear\_18:

(Start: 2 @13951 has 26 MA's), (9, 14140), (10, 14155), (14, 14197), (15, 14248), (16, 14251), (22, 14371), (34, 14689), (35, 14722), (46, 14992), (55, 15127), (58, 15211), (62, 15241), (73, 15382), (80, 15598), (83, 15673), (87, 15703), (94, 15793), (95, 15802), (97, 15856), (100, 15898),

Gene: Slay\_18 Start: 14493, Stop: 16466, Start Num: 2

Candidate Starts for Slay\_18:

(Start: 2 @14493 has 26 MA's), (9, 14682), (10, 14697), (14, 14739), (15, 14790), (16, 14793), (22, 14913), (34, 15231), (35, 15264), (43, 15492), (46, 15534), (48, 15561), (55, 15669), (58, 15753), (62, 15783), (73, 15924), (80, 16140), (83, 16215), (87, 16245), (94, 16335), (95, 16344), (97, 16398), (100, 16440),

Gene: Swervy\_18 Start: 13951, Stop: 15924, Start Num: 2

Candidate Starts for Swervy\_18:

(Start: 2 @13951 has 26 MA's), (9, 14140), (10, 14155), (14, 14197), (15, 14248), (16, 14251), (22, 14371), (34, 14689), (35, 14722), (46, 14992), (55, 15127), (58, 15211), (62, 15241), (73, 15382), (80, 15598), (83, 15673), (87, 15703), (94, 15793), (95, 15802), (97, 15856), (100, 15898),

Gene: TukTuk\_18 Start: 14009, Stop: 15982, Start Num: 2

Candidate Starts for TukTuk\_18:

(Start: 2 @14009 has 26 MA's), (9, 14198), (10, 14213), (13, 14225), (14, 14255), (15, 14306), (21, 14426), (22, 14429), (34, 14747), (35, 14780), (43, 15008), (46, 15050), (54, 15164), (55, 15185), (58, 15269), (62, 15299), (83, 15731), (89, 15776), (90, 15803), (94, 15851), (95, 15860), (97, 15914), (100, 15956),