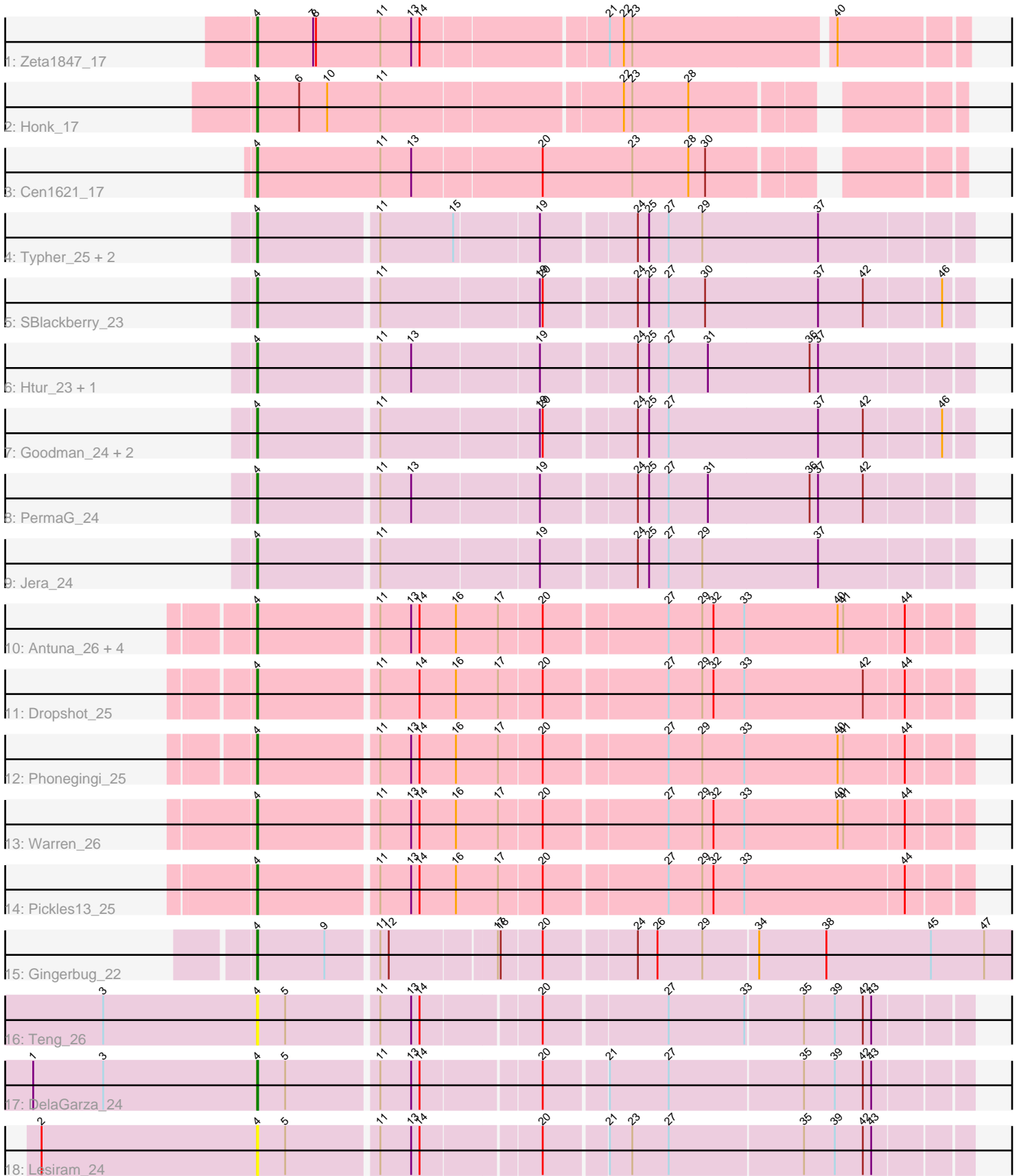


Pham 163859



Note: Tracks are now grouped by subcluster and scaled. Switching in subcluster is indicated by changes in track color. Track scale is now set by default to display the region 30 bp upstream of start 1 to 30 bp downstream of the last possible start. If this default region is judged to be packed too tightly with annotated starts, the track will be further scaled to only show that region of the ORF with annotated starts. This action will be indicated by adding "Zoomed" to the title. For starts, yellow indicates the location of called starts comprised solely of Glimmer/GeneMark auto-annotations, green indicates the location of called starts with at least 1 manual gene annotation.

Pham 163859 Report

This analysis was run 04/28/24 on database version 559.

Pham number 163859 has 27 members, 5 are drafts.

Phages represented in each track:

- Track 1 : Zeta1847_17
- Track 2 : Honk_17
- Track 3 : Cen1621_17
- Track 4 : Typher_25, Zanella_23, TurboVicky_23
- Track 5 : SBlackberry_23
- Track 6 : Htur_23, Rasovi_23
- Track 7 : Goodman_24, Johann_24, Cicada_25
- Track 8 : PermaG_24
- Track 9 : Jera_24
- Track 10 : Antuna_26, Blett_26, Appa_25, Bush_27, MenE_29
- Track 11 : Dropshot_25
- Track 12 : Phonegingi_25
- Track 13 : Warren_26
- Track 14 : Pickles13_25
- Track 15 : Gingerbug_22
- Track 16 : Teng_26
- Track 17 : DelaGarza_24
- Track 18 : Lesiram_24

Summary of Final Annotations (See graph section above for start numbers):

The start number called the most often in the published annotations is 4, it was called in 22 of the 22 non-draft genes in the pham.

Genes that call this "Most Annotated" start:

- Antuna_26, Appa_25, Blett_26, Bush_27, Cen1621_17, Cicada_25, DelaGarza_24, Dropshot_25, Gingerbug_22, Goodman_24, Honk_17, Htur_23, Jera_24, Johann_24, Lesiram_24, MenE_29, PermaG_24, Phonegingi_25, Pickles13_25, Rasovi_23, SBlackberry_23, Teng_26, TurboVicky_23, Typher_25, Warren_26, Zanella_23, Zeta1847_17,

Genes that have the "Most Annotated" start but do not call it:

-

Genes that do not have the "Most Annotated" start:

-

Summary by start number:

Start 4:

- Found in 27 of 27 (100.0%) of genes in pham
- Manual Annotations of this start: 22 of 22
- Called 100.0% of time when present
- Phage (with cluster) where this start called: Antuna_26 (GA), Appa_25 (GA), Blett_26 (GA), Bush_27 (GA), Cen1621_17 (EH), Cicada_25 (EJ), DelaGarza_24 (GF), Dropshot_25 (GA), Gingerbug_22 (GF), Goodman_24 (EJ), Honk_17 (EH), Htur_23 (EJ), Jera_24 (EJ), Johann_24 (EJ), Lesiram_24 (GF), MenE_29 (GA), PermaG_24 (EJ), Phonegingi_25 (GA), Pickles13_25 (GA), Rasovi_23 (EJ), SBlackberry_23 (EJ), Teng_26 (GF), TurboVicky_23 (EJ), Typher_25 (EJ), Warren_26 (GA), Zanella_23 (EJ), Zeta1847_17 (EH),

Summary by clusters:

There are 4 clusters represented in this pham: GF, EH, GA, EJ,

Info for manual annotations of cluster EH:

- Start number 4 was manually annotated 3 times for cluster EH.

Info for manual annotations of cluster EJ:

- Start number 4 was manually annotated 10 times for cluster EJ.

Info for manual annotations of cluster GA:

- Start number 4 was manually annotated 7 times for cluster GA.

Info for manual annotations of cluster GF:

- Start number 4 was manually annotated 2 times for cluster GF.

Gene Information:

Gene: Antuna_26 Start: 16757, Stop: 17491, Start Num: 4

Candidate Starts for Antuna_26:

(Start: 4 @16757 has 22 MA's), (11, 16880), (13, 16913), (14, 16922), (16, 16961), (17, 17006), (20, 17051), (27, 17177), (29, 17213), (32, 17225), (33, 17258), (40, 17357), (41, 17363), (44, 17426),

Gene: Appa_25 Start: 16619, Stop: 17353, Start Num: 4

Candidate Starts for Appa_25:

(Start: 4 @16619 has 22 MA's), (11, 16742), (13, 16775), (14, 16784), (16, 16823), (17, 16868), (20, 16913), (27, 17039), (29, 17075), (32, 17087), (33, 17120), (40, 17219), (41, 17225), (44, 17288),

Gene: Blett_26 Start: 16772, Stop: 17506, Start Num: 4

Candidate Starts for Blett_26:

(Start: 4 @16772 has 22 MA's), (11, 16895), (13, 16928), (14, 16937), (16, 16976), (17, 17021), (20, 17066), (27, 17192), (29, 17228), (32, 17240), (33, 17273), (40, 17372), (41, 17378), (44, 17441),

Gene: Bush_27 Start: 16747, Stop: 17481, Start Num: 4

Candidate Starts for Bush_27:

(Start: 4 @16747 has 22 MA's), (11, 16870), (13, 16903), (14, 16912), (16, 16951), (17, 16996), (20, 17041), (27, 17167), (29, 17203), (32, 17215), (33, 17248), (40, 17347), (41, 17353), (44, 17416),

Gene: Cen1621_17 Start: 14753, Stop: 15457, Start Num: 4

Candidate Starts for Cen1621_17:

(Start: 4 @14753 has 22 MA's), (11, 14885), (13, 14918), (20, 15053), (23, 15149), (28, 15209), (30, 15227),

Gene: Cicada_25 Start: 18670, Stop: 19401, Start Num: 4

Candidate Starts for Cicada_25:

(Start: 4 @18670 has 22 MA's), (11, 18793), (19, 18958), (20, 18961), (24, 19054), (25, 19066), (27, 19087), (37, 19246), (42, 19294), (46, 19372),

Gene: DelaGarza_24 Start: 17110, Stop: 17832, Start Num: 4

Candidate Starts for DelaGarza_24:

(1, 16870), (3, 16945), (Start: 4 @17110 has 22 MA's), (5, 17140), (11, 17233), (13, 17266), (14, 17275), (20, 17395), (21, 17458), (27, 17521), (35, 17662), (39, 17695), (42, 17725), (43, 17734),

Gene: Dropshot_25 Start: 16619, Stop: 17353, Start Num: 4

Candidate Starts for Dropshot_25:

(Start: 4 @16619 has 22 MA's), (11, 16742), (14, 16784), (16, 16823), (17, 16868), (20, 16913), (27, 17039), (29, 17075), (32, 17087), (33, 17120), (42, 17246), (44, 17288),

Gene: Gingerbug_22 Start: 16985, Stop: 17878, Start Num: 4

Candidate Starts for Gingerbug_22:

(Start: 4 @16985 has 22 MA's), (9, 17057), (11, 17108), (12, 17117), (17, 17225), (18, 17228), (20, 17270), (24, 17363), (26, 17384), (29, 17432), (34, 17489), (38, 17561), (45, 17672), (47, 17729),

Gene: Goodman_24 Start: 18583, Stop: 19314, Start Num: 4

Candidate Starts for Goodman_24:

(Start: 4 @18583 has 22 MA's), (11, 18706), (19, 18871), (20, 18874), (24, 18967), (25, 18979), (27, 19000), (37, 19159), (42, 19207), (46, 19285),

Gene: Honk_17 Start: 14329, Stop: 15024, Start Num: 4

Candidate Starts for Honk_17:

(Start: 4 @14329 has 22 MA's), (6, 14374), (10, 14404), (11, 14461), (22, 14707), (23, 14716), (28, 14776),

Gene: Htur_23 Start: 18637, Stop: 19368, Start Num: 4

Candidate Starts for Htur_23:

(Start: 4 @18637 has 22 MA's), (11, 18760), (13, 18793), (19, 18925), (24, 19021), (25, 19033), (27, 19054), (31, 19096), (36, 19204), (37, 19213),

Gene: Jera_24 Start: 17697, Stop: 18428, Start Num: 4

Candidate Starts for Jera_24:

(Start: 4 @17697 has 22 MA's), (11, 17820), (19, 17985), (24, 18081), (25, 18093), (27, 18114), (29, 18150), (37, 18273),

Gene: Johann_24 Start: 18583, Stop: 19314, Start Num: 4

Candidate Starts for Johann_24:

(Start: 4 @18583 has 22 MA's), (11, 18706), (19, 18871), (20, 18874), (24, 18967), (25, 18979), (27, 19000), (37, 19159), (42, 19207), (46, 19285),

Gene: Lesiram_24 Start: 17079, Stop: 17801, Start Num: 4

Candidate Starts for Lesiram_24:

(2, 16848), (Start: 4 @17079 has 22 MA's), (5, 17109), (11, 17202), (13, 17235), (14, 17244), (20, 17364), (21, 17427), (23, 17451), (27, 17490), (35, 17631), (39, 17664), (42, 17694), (43, 17703),

Gene: MenE_29 Start: 16887, Stop: 17621, Start Num: 4

Candidate Starts for MenE_29:

(Start: 4 @16887 has 22 MA's), (11, 17010), (13, 17043), (14, 17052), (16, 17091), (17, 17136), (20, 17181), (27, 17307), (29, 17343), (32, 17355), (33, 17388), (40, 17487), (41, 17493), (44, 17556),

Gene: PermaG_24 Start: 18650, Stop: 19381, Start Num: 4

Candidate Starts for PermaG_24:

(Start: 4 @18650 has 22 MA's), (11, 18773), (13, 18806), (19, 18938), (24, 19034), (25, 19046), (27, 19067), (31, 19109), (36, 19217), (37, 19226), (42, 19274),

Gene: Phonegingi_25 Start: 16664, Stop: 17398, Start Num: 4

Candidate Starts for Phonegingi_25:

(Start: 4 @16664 has 22 MA's), (11, 16787), (13, 16820), (14, 16829), (16, 16868), (17, 16913), (20, 16958), (27, 17084), (29, 17120), (33, 17165), (40, 17264), (41, 17270), (44, 17333),

Gene: Pickles13_25 Start: 17050, Stop: 17784, Start Num: 4

Candidate Starts for Pickles13_25:

(Start: 4 @17050 has 22 MA's), (11, 17173), (13, 17206), (14, 17215), (16, 17254), (17, 17299), (20, 17344), (27, 17470), (29, 17506), (32, 17518), (33, 17551), (44, 17719),

Gene: Rasovi_23 Start: 18637, Stop: 19368, Start Num: 4

Candidate Starts for Rasovi_23:

(Start: 4 @18637 has 22 MA's), (11, 18760), (13, 18793), (19, 18925), (24, 19021), (25, 19033), (27, 19054), (31, 19096), (36, 19204), (37, 19213),

Gene: SBlackberry_23 Start: 18448, Stop: 19179, Start Num: 4

Candidate Starts for SBlackberry_23:

(Start: 4 @18448 has 22 MA's), (11, 18571), (19, 18736), (20, 18739), (24, 18832), (25, 18844), (27, 18865), (30, 18904), (37, 19024), (42, 19072), (46, 19150),

Gene: Teng_26 Start: 17129, Stop: 17851, Start Num: 4

Candidate Starts for Teng_26:

(3, 16964), (Start: 4 @17129 has 22 MA's), (5, 17159), (11, 17252), (13, 17285), (14, 17294), (20, 17414), (27, 17540), (33, 17621), (35, 17681), (39, 17714), (42, 17744), (43, 17753),

Gene: TurboVicky_23 Start: 18449, Stop: 19180, Start Num: 4

Candidate Starts for TurboVicky_23:

(Start: 4 @18449 has 22 MA's), (11, 18572), (15, 18650), (19, 18737), (24, 18833), (25, 18845), (27, 18866), (29, 18902), (37, 19025),

Gene: Typher_25 Start: 18578, Stop: 19309, Start Num: 4

Candidate Starts for Typher_25:

(Start: 4 @18578 has 22 MA's), (11, 18701), (15, 18779), (19, 18866), (24, 18962), (25, 18974), (27, 18995), (29, 19031), (37, 19154),

Gene: Warren_26 Start: 16823, Stop: 17557, Start Num: 4

Candidate Starts for Warren_26:

(Start: 4 @16823 has 22 MA's), (11, 16946), (13, 16979), (14, 16988), (16, 17027), (17, 17072), (20, 17117), (27, 17243), (29, 17279), (32, 17291), (33, 17324), (40, 17423), (41, 17429), (44, 17492),

Gene: Zanella_23 Start: 18452, Stop: 19183, Start Num: 4

Candidate Starts for Zanella_23:

(Start: 4 @18452 has 22 MA's), (11, 18575), (15, 18653), (19, 18740), (24, 18836), (25, 18848), (27, 18869), (29, 18905), (37, 19028),

Gene: Zeta1847_17 Start: 16152, Stop: 16877, Start Num: 4

Candidate Starts for Zeta1847_17:

(Start: 4 @16152 has 22 MA's), (7, 16212), (8, 16215), (11, 16284), (13, 16317), (14, 16326), (21, 16515), (22, 16530), (23, 16539), (40, 16746),