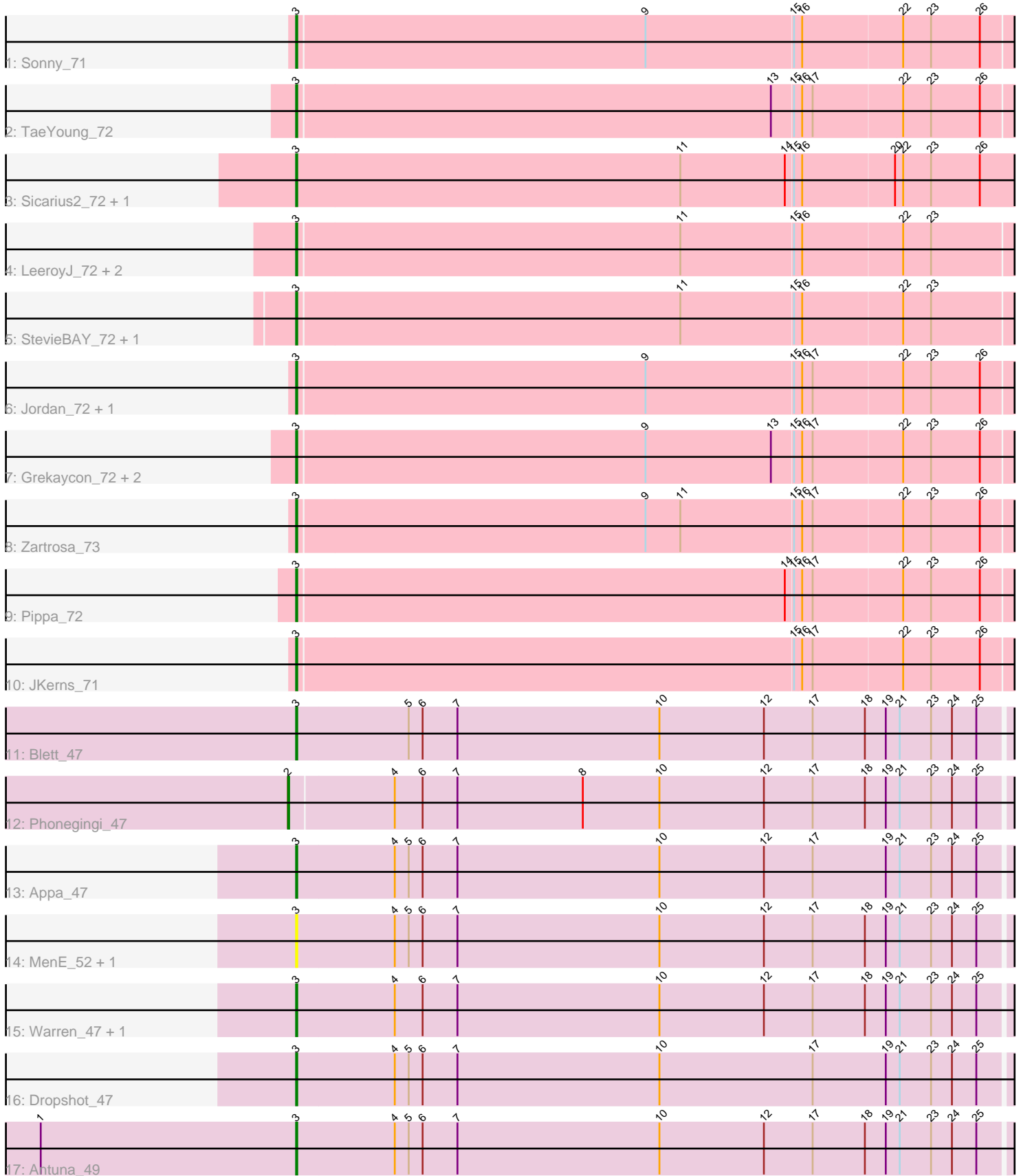


Pham 163868



Note: Tracks are now grouped by subcluster and scaled. Switching in subcluster is indicated by changes in track color. Track scale is now set by default to display the region 30 bp upstream of start 1 to 30 bp downstream of the last possible start. If this default region is judged to be packed too tightly with annotated starts, the track will be further scaled to only show that region of the ORF with annotated starts. This action will be indicated by adding "Zoomed" to the title. For starts, yellow indicates the location of called starts comprised solely of Glimmer/GeneMark auto-annotations, green indicates the location of called starts with at least 1 manual gene annotation.

## Pham 163868 Report

This analysis was run 04/28/24 on database version 559.

Pham number 163868 has 26 members, 3 are drafts.

Phages represented in each track:

- Track 1 : Sonny\_71
- Track 2 : TaeYoung\_72
- Track 3 : Sicarius2\_72, Wyborn\_71
- Track 4 : LeeroyJ\_72, GravityBall\_71, Timinator\_72
- Track 5 : StevieBAY\_72, BarretLemon\_71
- Track 6 : Jordan\_72, Shade\_71
- Track 7 : Grekaycon\_72, Martha\_71, BossLady\_73
- Track 8 : Zartrosa\_73
- Track 9 : Pippa\_72
- Track 10 : JKerns\_71
- Track 11 : Blett\_47
- Track 12 : Phonegingi\_47
- Track 13 : Appa\_47
- Track 14 : MenE\_52, Bush\_50
- Track 15 : Warren\_47, Pickles13\_46
- Track 16 : Dropshot\_47
- Track 17 : Antuna\_49

### ***Summary of Final Annotations (See graph section above for start numbers):***

The start number called the most often in the published annotations is 3, it was called in 22 of the 23 non-draft genes in the pham.

Genes that call this "Most Annotated" start:

- Antuna\_49, Appa\_47, BarretLemon\_71, Blett\_47, BossLady\_73, Bush\_50, Dropshot\_47, GravityBall\_71, Grekaycon\_72, JKerns\_71, Jordan\_72, LeeroyJ\_72, Martha\_71, MenE\_52, Pickles13\_46, Pippa\_72, Shade\_71, Sicarius2\_72, Sonny\_71, StevieBAY\_72, TaeYoung\_72, Timinator\_72, Warren\_47, Wyborn\_71, Zartrosa\_73,

Genes that have the "Most Annotated" start but do not call it:

- 

Genes that do not have the "Most Annotated" start:

- Phonegingi\_47,

## Summary by start number:

### Start 2:

- Found in 1 of 26 ( 3.8% ) of genes in pham
- Manual Annotations of this start: 1 of 23
- Called 100.0% of time when present
- Phage (with cluster) where this start called: Phonegingi\_47 (GA),

### Start 3:

- Found in 25 of 26 ( 96.2% ) of genes in pham
- Manual Annotations of this start: 22 of 23
- Called 100.0% of time when present
- Phage (with cluster) where this start called: Antuna\_49 (GA), Appa\_47 (GA), BarretLemon\_71 (AO2), Blett\_47 (GA), BossLady\_73 (AO2), Bush\_50 (GA), Dropshot\_47 (GA), GravityBall\_71 (AO2), Grekaycon\_72 (AO2), JKerns\_71 (AO2), Jordan\_72 (AO2), LeeroyJ\_72 (AO2), Martha\_71 (AO2), MenE\_52 (GA), Pickles13\_46 (GA), Pippa\_72 (AO2), Shade\_71 (AO2), Sicarius2\_72 (AO2), Sonny\_71 (AO2), StevieBAY\_72 (AO2), TaeYoung\_72 (AO2), Timinator\_72 (AO2), Warren\_47 (GA), Wyborn\_71 (AO2), Zartrosa\_73 (AO2),

## Summary by clusters:

There are 2 clusters represented in this pham: AO2, GA,

Info for manual annotations of cluster AO2:

- Start number 3 was manually annotated 16 times for cluster AO2.

Info for manual annotations of cluster GA:

- Start number 2 was manually annotated 1 time for cluster GA.
- Start number 3 was manually annotated 6 times for cluster GA.

## Gene Information:

Gene: Antuna\_49 Start: 29896, Stop: 30522, Start Num: 3

Candidate Starts for Antuna\_49:

(1, 29677), (Start: 3 @29896 has 22 MA's), (4, 29980), (5, 29992), (6, 30004), (7, 30034), (10, 30208), (12, 30298), (17, 30340), (18, 30385), (19, 30403), (21, 30415), (23, 30442), (24, 30460), (25, 30481),

Gene: Appa\_47 Start: 29661, Stop: 30287, Start Num: 3

Candidate Starts for Appa\_47:

(Start: 3 @29661 has 22 MA's), (4, 29745), (5, 29757), (6, 29769), (7, 29799), (10, 29973), (12, 30063), (17, 30105), (19, 30168), (21, 30180), (23, 30207), (24, 30225), (25, 30246),

Gene: BarretLemon\_71 Start: 45350, Stop: 45970, Start Num: 3

Candidate Starts for BarretLemon\_71:

(Start: 3 @45350 has 22 MA's), (11, 45677), (15, 45773), (16, 45779), (22, 45863), (23, 45887),

Gene: Blett\_47 Start: 29847, Stop: 30473, Start Num: 3

Candidate Starts for Blett\_47:

(Start: 3 @29847 has 22 MA's), (5, 29943), (6, 29955), (7, 29985), (10, 30159), (12, 30249), (17, 30291), (18, 30336), (19, 30354), (21, 30366), (23, 30393), (24, 30411), (25, 30432),

Gene: BossLady\_73 Start: 45907, Stop: 46527, Start Num: 3

Candidate Starts for BossLady\_73:

(Start: 3 @45907 has 22 MA's), (9, 46204), (13, 46312), (15, 46330), (16, 46336), (17, 46345), (22, 46420), (23, 46444), (26, 46486),

Gene: Bush\_50 Start: 29795, Stop: 30421, Start Num: 3

Candidate Starts for Bush\_50:

(Start: 3 @29795 has 22 MA's), (4, 29879), (5, 29891), (6, 29903), (7, 29933), (10, 30107), (12, 30197), (17, 30239), (18, 30284), (19, 30302), (21, 30314), (23, 30341), (24, 30359), (25, 30380),

Gene: Dropshot\_47 Start: 29496, Stop: 30122, Start Num: 3

Candidate Starts for Dropshot\_47:

(Start: 3 @29496 has 22 MA's), (4, 29580), (5, 29592), (6, 29604), (7, 29634), (10, 29808), (17, 29940), (19, 30003), (21, 30015), (23, 30042), (24, 30060), (25, 30081),

Gene: GravityBall\_71 Start: 45608, Stop: 46228, Start Num: 3

Candidate Starts for GravityBall\_71:

(Start: 3 @45608 has 22 MA's), (11, 45935), (15, 46031), (16, 46037), (22, 46121), (23, 46145),

Gene: Grekaycon\_72 Start: 45820, Stop: 46440, Start Num: 3

Candidate Starts for Grekaycon\_72:

(Start: 3 @45820 has 22 MA's), (9, 46117), (13, 46225), (15, 46243), (16, 46249), (17, 46258), (22, 46333), (23, 46357), (26, 46399),

Gene: JKerns\_71 Start: 45847, Stop: 46467, Start Num: 3

Candidate Starts for JKerns\_71:

(Start: 3 @45847 has 22 MA's), (15, 46270), (16, 46276), (17, 46285), (22, 46360), (23, 46384), (26, 46426),

Gene: Jordan\_72 Start: 45972, Stop: 46592, Start Num: 3

Candidate Starts for Jordan\_72:

(Start: 3 @45972 has 22 MA's), (9, 46269), (15, 46395), (16, 46401), (17, 46410), (22, 46485), (23, 46509), (26, 46551),

Gene: LeeroyJ\_72 Start: 45537, Stop: 46157, Start Num: 3

Candidate Starts for LeeroyJ\_72:

(Start: 3 @45537 has 22 MA's), (11, 45864), (15, 45960), (16, 45966), (22, 46050), (23, 46074),

Gene: Martha\_71 Start: 45756, Stop: 46376, Start Num: 3

Candidate Starts for Martha\_71:

(Start: 3 @45756 has 22 MA's), (9, 46053), (13, 46161), (15, 46179), (16, 46185), (17, 46194), (22, 46269), (23, 46293), (26, 46335),

Gene: MenE\_52 Start: 29918, Stop: 30544, Start Num: 3

Candidate Starts for MenE\_52:

(Start: 3 @29918 has 22 MA's), (4, 30002), (5, 30014), (6, 30026), (7, 30056), (10, 30230), (12, 30320), (17, 30362), (18, 30407), (19, 30425), (21, 30437), (23, 30464), (24, 30482), (25, 30503),

Gene: Phonegingi\_47 Start: 29697, Stop: 30326, Start Num: 2

Candidate Starts for Phonegingi\_47:

(Start: 2 @29697 has 1 MA's), (4, 29784), (6, 29808), (7, 29838), (8, 29946), (10, 30012), (12, 30102), (17, 30144), (18, 30189), (19, 30207), (21, 30219), (23, 30246), (24, 30264), (25, 30285),

Gene: Pickles13\_46 Start: 29965, Stop: 30591, Start Num: 3

Candidate Starts for Pickles13\_46:

(Start: 3 @29965 has 22 MA's), (4, 30049), (6, 30073), (7, 30103), (10, 30277), (12, 30367), (17, 30409), (18, 30454), (19, 30472), (21, 30484), (23, 30511), (24, 30529), (25, 30550),

Gene: Pippa\_72 Start: 45803, Stop: 46423, Start Num: 3

Candidate Starts for Pippa\_72:

(Start: 3 @45803 has 22 MA's), (14, 46220), (15, 46226), (16, 46232), (17, 46241), (22, 46316), (23, 46340), (26, 46382),

Gene: Shade\_71 Start: 45610, Stop: 46230, Start Num: 3

Candidate Starts for Shade\_71:

(Start: 3 @45610 has 22 MA's), (9, 45907), (15, 46033), (16, 46039), (17, 46048), (22, 46123), (23, 46147), (26, 46189),

Gene: Sicarius2\_72 Start: 43729, Stop: 44355, Start Num: 3

Candidate Starts for Sicarius2\_72:

(Start: 3 @43729 has 22 MA's), (11, 44059), (14, 44149), (15, 44155), (16, 44161), (20, 44239), (22, 44245), (23, 44269), (26, 44311),

Gene: Sonny\_71 Start: 45533, Stop: 46153, Start Num: 3

Candidate Starts for Sonny\_71:

(Start: 3 @45533 has 22 MA's), (9, 45830), (15, 45956), (16, 45962), (22, 46046), (23, 46070), (26, 46112),

Gene: StevieBAY\_72 Start: 45827, Stop: 46447, Start Num: 3

Candidate Starts for StevieBAY\_72:

(Start: 3 @45827 has 22 MA's), (11, 46154), (15, 46250), (16, 46256), (22, 46340), (23, 46364),

Gene: TaeYoung\_72 Start: 45728, Stop: 46348, Start Num: 3

Candidate Starts for TaeYoung\_72:

(Start: 3 @45728 has 22 MA's), (13, 46133), (15, 46151), (16, 46157), (17, 46166), (22, 46241), (23, 46265), (26, 46307),

Gene: Timinator\_72 Start: 45650, Stop: 46270, Start Num: 3

Candidate Starts for Timinator\_72:

(Start: 3 @45650 has 22 MA's), (11, 45977), (15, 46073), (16, 46079), (22, 46163), (23, 46187),

Gene: Warren\_47 Start: 29704, Stop: 30330, Start Num: 3

Candidate Starts for Warren\_47:

(Start: 3 @29704 has 22 MA's), (4, 29788), (6, 29812), (7, 29842), (10, 30016), (12, 30106), (17, 30148), (18, 30193), (19, 30211), (21, 30223), (23, 30250), (24, 30268), (25, 30289),

Gene: Wyborn\_71 Start: 44464, Stop: 45090, Start Num: 3

Candidate Starts for Wyborn\_71:

(Start: 3 @44464 has 22 MA's), (11, 44794), (14, 44884), (15, 44890), (16, 44896), (20, 44974), (22, 44980), (23, 45004), (26, 45046),

Gene: Zartrosa\_73 Start: 45863, Stop: 46483, Start Num: 3

Candidate Starts for Zartrosa\_73:

(Start: 3 @45863 has 22 MA's), (9, 46160), (11, 46190), (15, 46286), (16, 46292), (17, 46301), (22, 46376), (23, 46400), (26, 46442),