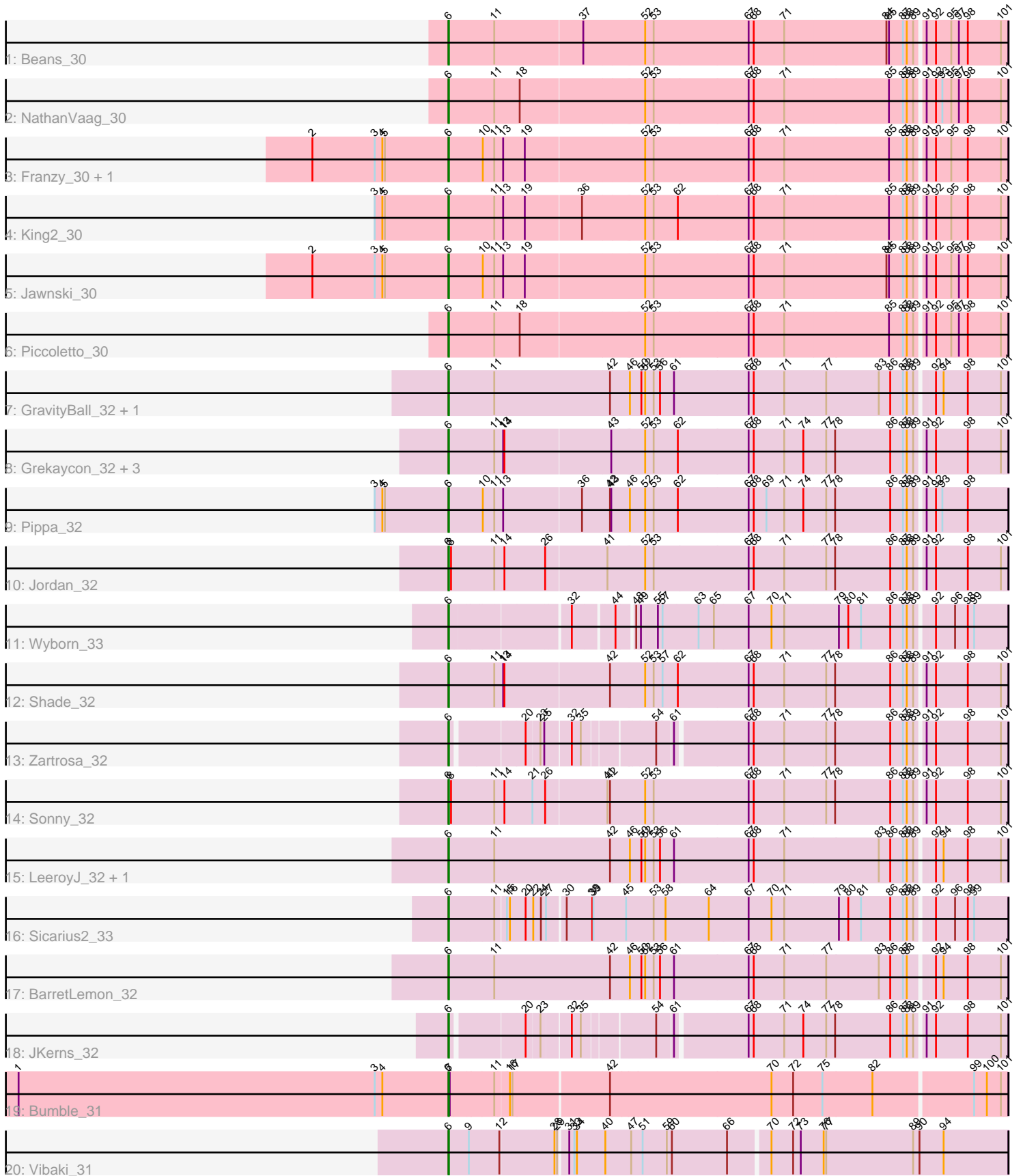


Pham 163870



Note: Tracks are now grouped by subcluster and scaled. Switching in subcluster is indicated by changes in track color. Track scale is now set by default to display the region 30 bp upstream of start 1 to 30 bp downstream of the last possible start. If this default region is judged to be packed too tightly with annotated starts, the track will be further scaled to only show that region of the ORF with annotated starts. This action will be indicated by adding "Zoomed" to the title. For starts, yellow indicates the location of called starts comprised solely of Glimmer/GeneMark auto-annotations, green indicates the location of called starts with at least 1 manual gene annotation.

Pham 163870 Report

This analysis was run 04/28/24 on database version 559.

Pham number 163870 has 26 members, 1 are drafts.

Phages represented in each track:

- Track 1 : Beans_30
- Track 2 : NathanVaag_30
- Track 3 : Franzy_30, Brent_30
- Track 4 : King2_30
- Track 5 : Jawnski_30
- Track 6 : Piccoletto_30
- Track 7 : GravityBall_32, StevieBAY_32
- Track 8 : Grekaycon_32, Martha_32, BossLady_32, TaeYoung_32
- Track 9 : Pippa_32
- Track 10 : Jordan_32
- Track 11 : Wyborn_33
- Track 12 : Shade_32
- Track 13 : Zartrosa_32
- Track 14 : Sonny_32
- Track 15 : LeeroyJ_32, Timinator_32
- Track 16 : Sicarius2_33
- Track 17 : BarretLemon_32
- Track 18 : JKerns_32
- Track 19 : Bumble_31
- Track 20 : Vibaki_31

Summary of Final Annotations (See graph section above for start numbers):

The start number called the most often in the published annotations is 6, it was called in 25 of the 25 non-draft genes in the pham.

Genes that call this "Most Annotated" start:

• BarretLemon_32, Beans_30, BossLady_32, Brent_30, Bumble_31, Franzy_30, GravityBall_32, Grekaycon_32, JKerns_32, Jawnski_30, Jordan_32, King2_30, LeeroyJ_32, Martha_32, NathanVaag_30, Piccoletto_30, Pippa_32, Shade_32, Sicarius2_33, Sonny_32, StevieBAY_32, TaeYoung_32, Timinator_32, Vibaki_31, Wyborn_33, Zartrosa_32,

Genes that have the "Most Annotated" start but do not call it:

-

Genes that do not have the "Most Annotated" start:

-

Summary by start number:

Start 6:

- Found in 26 of 26 (100.0%) of genes in pham
- Manual Annotations of this start: 25 of 25
- Called 100.0% of time when present
- Phage (with cluster) where this start called: BarretLemon_32 (AO2), Beans_30 (AO1), BossLady_32 (AO2), Brent_30 (AO1), Bumble_31 (FH), Franzy_30 (AO1), GravityBall_32 (AO2), Grekaycon_32 (AO2), JKerns_32 (AO2), Jawnski_30 (AO1), Jordan_32 (AO2), King2_30 (AO1), LeeroyJ_32 (AO2), Martha_32 (AO2), NathanVaag_30 (AO1), Piccoletto_30 (AO1), Pippa_32 (AO2), Shade_32 (AO2), Sicarius2_33 (AO2), Sonny_32 (AO2), StevieBAY_32 (AO2), TaeYoung_32 (AO2), Timinator_32 (AO2), Vibaki_31 (FL), Wyborn_33 (AO2), Zartrosa_32 (AO2),

Summary by clusters:

There are 4 clusters represented in this pham: FH, FL, AO2, AO1,

Info for manual annotations of cluster AO1:

- Start number 6 was manually annotated 7 times for cluster AO1.

Info for manual annotations of cluster AO2:

- Start number 6 was manually annotated 16 times for cluster AO2.

Info for manual annotations of cluster FH:

- Start number 6 was manually annotated 1 time for cluster FH.

Info for manual annotations of cluster FL:

- Start number 6 was manually annotated 1 time for cluster FL.

Gene Information:

Gene: BarretLemon_32 Start: 27189, Stop: 28472, Start Num: 6

Candidate Starts for BarretLemon_32:

(Start: 6 @27189 has 25 MA's), (11, 27297), (42, 27567), (46, 27609), (50, 27636), (52, 27645), (53, 27663), (56, 27678), (61, 27711), (67, 27885), (68, 27897), (71, 27969), (77, 28065), (83, 28188), (86, 28215), (87, 28245), (88, 28254), (92, 28305), (94, 28323), (98, 28380), (101, 28458),

Gene: Beans_30 Start: 26891, Stop: 28168, Start Num: 6

Candidate Starts for Beans_30:

(Start: 6 @26891 has 25 MA's), (11, 26999), (37, 27203), (52, 27341), (53, 27359), (67, 27581), (68, 27593), (71, 27665), (84, 27902), (85, 27908), (87, 27941), (88, 27950), (89, 27965), (91, 27983), (92, 28001), (95, 28037), (97, 28055), (98, 28076), (101, 28154),

Gene: BossLady_32 Start: 27166, Stop: 28443, Start Num: 6

Candidate Starts for BossLady_32:

(Start: 6 @27166 has 25 MA's), (11, 27274), (13, 27295), (14, 27298), (43, 27541), (52, 27616), (53, 27634), (62, 27691), (67, 27856), (68, 27868), (71, 27940), (74, 27985), (77, 28036), (78, 28057), (86, 28186), (87, 28216), (88, 28225), (89, 28240), (91, 28258), (92, 28276), (98, 28351), (101, 28429),

Gene: Brent_30 Start: 26853, Stop: 28130, Start Num: 6

Candidate Starts for Brent_30:

(2, 26532), (3, 26679), (4, 26697), (5, 26703), (Start: 6 @26853 has 25 MA's), (10, 26934), (11, 26961), (13, 26982), (19, 27033), (52, 27303), (53, 27321), (67, 27543), (68, 27555), (71, 27627), (85, 27870), (87, 27903), (88, 27912), (89, 27927), (91, 27945), (92, 27963), (95, 27999), (98, 28038), (101, 28116),

Gene: Bumble_31 Start: 25165, Stop: 26421, Start Num: 6

Candidate Starts for Bumble_31:

(1, 24151), (3, 24991), (4, 25009), (Start: 6 @25165 has 25 MA's), (7, 25168), (11, 25264), (16, 25294), (17, 25300), (42, 25516), (70, 25888), (72, 25939), (75, 26008), (82, 26125), (99, 26347), (100, 26377), (101, 26410),

Gene: Franzy_30 Start: 26852, Stop: 28129, Start Num: 6

Candidate Starts for Franzy_30:

(2, 26531), (3, 26678), (4, 26696), (5, 26702), (Start: 6 @26852 has 25 MA's), (10, 26933), (11, 26960), (13, 26981), (19, 27032), (52, 27302), (53, 27320), (67, 27542), (68, 27554), (71, 27626), (85, 27869), (87, 27902), (88, 27911), (89, 27926), (91, 27944), (92, 27962), (95, 27998), (98, 28037), (101, 28115),

Gene: GravityBall_32 Start: 27188, Stop: 28471, Start Num: 6

Candidate Starts for GravityBall_32:

(Start: 6 @27188 has 25 MA's), (11, 27296), (42, 27566), (46, 27608), (50, 27635), (52, 27644), (53, 27662), (56, 27677), (61, 27710), (67, 27884), (68, 27896), (71, 27968), (77, 28064), (83, 28187), (86, 28214), (87, 28244), (88, 28253), (89, 28268), (92, 28304), (94, 28322), (98, 28379), (101, 28457),

Gene: Grekaycon_32 Start: 27112, Stop: 28389, Start Num: 6

Candidate Starts for Grekaycon_32:

(Start: 6 @27112 has 25 MA's), (11, 27220), (13, 27241), (14, 27244), (43, 27487), (52, 27562), (53, 27580), (62, 27637), (67, 27802), (68, 27814), (71, 27886), (74, 27931), (77, 27982), (78, 28003), (86, 28132), (87, 28162), (88, 28171), (89, 28186), (91, 28204), (92, 28222), (98, 28297), (101, 28375),

Gene: JKerns_32 Start: 27139, Stop: 28335, Start Num: 6

Candidate Starts for JKerns_32:

(Start: 6 @27139 has 25 MA's), (20, 27295), (23, 27325), (32, 27388), (35, 27409), (54, 27556), (61, 27589), (67, 27748), (68, 27760), (71, 27832), (74, 27877), (77, 27928), (78, 27949), (86, 28078), (87, 28108), (88, 28117), (89, 28132), (91, 28150), (92, 28168), (98, 28243), (101, 28321),

Gene: Jawnski_30 Start: 26862, Stop: 28139, Start Num: 6

Candidate Starts for Jawnski_30:

(2, 26541), (3, 26688), (4, 26706), (5, 26712), (Start: 6 @26862 has 25 MA's), (10, 26943), (11, 26970), (13, 26991), (19, 27042), (52, 27312), (53, 27330), (67, 27552), (68, 27564), (71, 27636), (84, 27873), (85, 27879), (87, 27912), (88, 27921), (89, 27936), (91, 27954), (92, 27972), (95, 28008), (97, 28026), (98, 28047), (101, 28125),

Gene: Jordan_32 Start: 27109, Stop: 28386, Start Num: 6

Candidate Starts for Jordan_32:

(Start: 6 @27109 has 25 MA's), (8, 27115), (11, 27217), (14, 27241), (26, 27337), (41, 27475), (52, 27559), (53, 27577), (67, 27799), (68, 27811), (71, 27883), (77, 27979), (78, 28000), (86, 28129), (87,

28159), (88, 28168), (89, 28183), (91, 28201), (92, 28219), (98, 28294), (101, 28372),

Gene: King2_30 Start: 26849, Stop: 28126, Start Num: 6

Candidate Starts for King2_30:

(3, 26675), (4, 26693), (5, 26699), (Start: 6 @26849 has 25 MA's), (11, 26957), (13, 26978), (19, 27029), (36, 27158), (52, 27299), (53, 27317), (62, 27374), (67, 27539), (68, 27551), (71, 27623), (85, 27866), (87, 27899), (88, 27908), (89, 27923), (91, 27941), (92, 27959), (95, 27995), (98, 28034), (101, 28112),

Gene: LeeroyJ_32 Start: 27188, Stop: 28471, Start Num: 6

Candidate Starts for LeeroyJ_32:

(Start: 6 @27188 has 25 MA's), (11, 27296), (42, 27566), (46, 27608), (50, 27635), (52, 27644), (53, 27662), (56, 27677), (61, 27710), (67, 27884), (68, 27896), (71, 27968), (83, 28187), (86, 28214), (87, 28244), (88, 28253), (89, 28268), (92, 28304), (94, 28322), (98, 28379), (101, 28457),

Gene: Martha_32 Start: 27113, Stop: 28390, Start Num: 6

Candidate Starts for Martha_32:

(Start: 6 @27113 has 25 MA's), (11, 27221), (13, 27242), (14, 27245), (43, 27488), (52, 27563), (53, 27581), (62, 27638), (67, 27803), (68, 27815), (71, 27887), (74, 27932), (77, 27983), (78, 28004), (86, 28133), (87, 28163), (88, 28172), (89, 28187), (91, 28205), (92, 28223), (98, 28298), (101, 28376),

Gene: NathanVaag_30 Start: 26865, Stop: 28142, Start Num: 6

Candidate Starts for NathanVaag_30:

(Start: 6 @26865 has 25 MA's), (11, 26973), (18, 27033), (52, 27315), (53, 27333), (67, 27555), (68, 27567), (71, 27639), (85, 27882), (87, 27915), (88, 27924), (89, 27939), (91, 27957), (92, 27975), (93, 27990), (95, 28011), (97, 28029), (98, 28050), (101, 28128),

Gene: Piccoletto_30 Start: 26867, Stop: 28144, Start Num: 6

Candidate Starts for Piccoletto_30:

(Start: 6 @26867 has 25 MA's), (11, 26975), (18, 27035), (52, 27317), (53, 27335), (67, 27557), (68, 27569), (71, 27641), (85, 27884), (87, 27917), (88, 27926), (89, 27941), (91, 27959), (92, 27977), (95, 28013), (97, 28031), (98, 28052), (101, 28130),

Gene: Pippa_32 Start: 27238, Stop: 28515, Start Num: 6

Candidate Starts for Pippa_32:

(3, 27064), (4, 27082), (5, 27088), (Start: 6 @27238 has 25 MA's), (10, 27319), (11, 27346), (13, 27367), (36, 27547), (42, 27610), (43, 27613), (46, 27652), (52, 27688), (53, 27706), (62, 27763), (67, 27928), (68, 27940), (69, 27970), (71, 28012), (74, 28057), (77, 28108), (78, 28129), (86, 28258), (87, 28288), (88, 28297), (89, 28312), (91, 28330), (92, 28348), (93, 28363), (98, 28423),

Gene: Shade_32 Start: 27079, Stop: 28356, Start Num: 6

Candidate Starts for Shade_32:

(Start: 6 @27079 has 25 MA's), (11, 27187), (13, 27208), (14, 27211), (42, 27451), (52, 27529), (53, 27547), (57, 27568), (62, 27604), (67, 27769), (68, 27781), (71, 27853), (77, 27949), (78, 27970), (86, 28099), (87, 28129), (88, 28138), (89, 28153), (91, 28171), (92, 28189), (98, 28264), (101, 28342),

Gene: Sicarius2_33 Start: 26732, Stop: 27994, Start Num: 6

Candidate Starts for Sicarius2_33:

(Start: 6 @26732 has 25 MA's), (11, 26831), (15, 26855), (16, 26861), (20, 26897), (22, 26915), (24, 26933), (27, 26945), (30, 26984), (38, 27044), (39, 27047), (45, 27119), (53, 27182), (58, 27209), (64, 27311), (67, 27404), (70, 27458), (71, 27488), (79, 27614), (80, 27635), (81, 27665), (86, 27734), (87, 27764), (88, 27773), (89, 27788), (92, 27824), (96, 27869), (98, 27899), (99, 27914),

Gene: Sonny_32 Start: 27109, Stop: 28386, Start Num: 6

Candidate Starts for Sonny_32:

(Start: 6 @27109 has 25 MA's), (8, 27115), (11, 27217), (14, 27241), (21, 27307), (26, 27337), (41, 27475), (42, 27481), (52, 27559), (53, 27577), (67, 27799), (68, 27811), (71, 27883), (77, 27979), (78, 28000), (86, 28129), (87, 28159), (88, 28168), (89, 28183), (91, 28201), (92, 28219), (98, 28294), (101, 28372),

Gene: StevieBAY_32 Start: 27188, Stop: 28471, Start Num: 6

Candidate Starts for StevieBAY_32:

(Start: 6 @27188 has 25 MA's), (11, 27296), (42, 27566), (46, 27608), (50, 27635), (52, 27644), (53, 27662), (56, 27677), (61, 27710), (67, 27884), (68, 27896), (71, 27968), (77, 28064), (83, 28187), (86, 28214), (87, 28244), (88, 28253), (89, 28268), (92, 28304), (94, 28322), (98, 28379), (101, 28457),

Gene: TaeYoung_32 Start: 27113, Stop: 28390, Start Num: 6

Candidate Starts for TaeYoung_32:

(Start: 6 @27113 has 25 MA's), (11, 27221), (13, 27242), (14, 27245), (43, 27488), (52, 27563), (53, 27581), (62, 27638), (67, 27803), (68, 27815), (71, 27887), (74, 27932), (77, 27983), (78, 28004), (86, 28133), (87, 28163), (88, 28172), (89, 28187), (91, 28205), (92, 28223), (98, 28298), (101, 28376),

Gene: Timinator_32 Start: 27188, Stop: 28471, Start Num: 6

Candidate Starts for Timinator_32:

(Start: 6 @27188 has 25 MA's), (11, 27296), (42, 27566), (46, 27608), (50, 27635), (52, 27644), (53, 27662), (56, 27677), (61, 27710), (67, 27884), (68, 27896), (71, 27968), (83, 28187), (86, 28214), (87, 28244), (88, 28253), (89, 28268), (92, 28304), (94, 28322), (98, 28379), (101, 28457),

Gene: Vibaki_31 Start: 28229, Stop: 29491, Start Num: 6

Candidate Starts for Vibaki_31:

(Start: 6 @28229 has 25 MA's), (9, 28274), (12, 28343), (28, 28460), (29, 28466), (31, 28484), (33, 28496), (34, 28502), (40, 28568), (47, 28628), (51, 28655), (59, 28709), (60, 28721), (66, 28850), (70, 28940), (72, 28991), (73, 29009), (76, 29060), (77, 29066), (89, 29270), (90, 29285), (94, 29342),

Gene: Wyborn_33 Start: 27430, Stop: 28632, Start Num: 6

Candidate Starts for Wyborn_33:

(Start: 6 @27430 has 25 MA's), (32, 27682), (44, 27760), (48, 27796), (49, 27802), (55, 27832), (57, 27841), (63, 27925), (65, 27961), (67, 28042), (70, 28096), (71, 28126), (79, 28252), (80, 28273), (81, 28303), (86, 28372), (87, 28402), (88, 28411), (89, 28426), (92, 28462), (96, 28507), (98, 28537), (99, 28552),

Gene: Zartrosa_32 Start: 27103, Stop: 28299, Start Num: 6

Candidate Starts for Zartrosa_32:

(Start: 6 @27103 has 25 MA's), (20, 27259), (23, 27289), (25, 27298), (32, 27352), (35, 27373), (54, 27520), (61, 27553), (67, 27712), (68, 27724), (71, 27796), (77, 27892), (78, 27913), (86, 28042), (87, 28072), (88, 28081), (89, 28096), (91, 28114), (92, 28132), (98, 28207), (101, 28285),