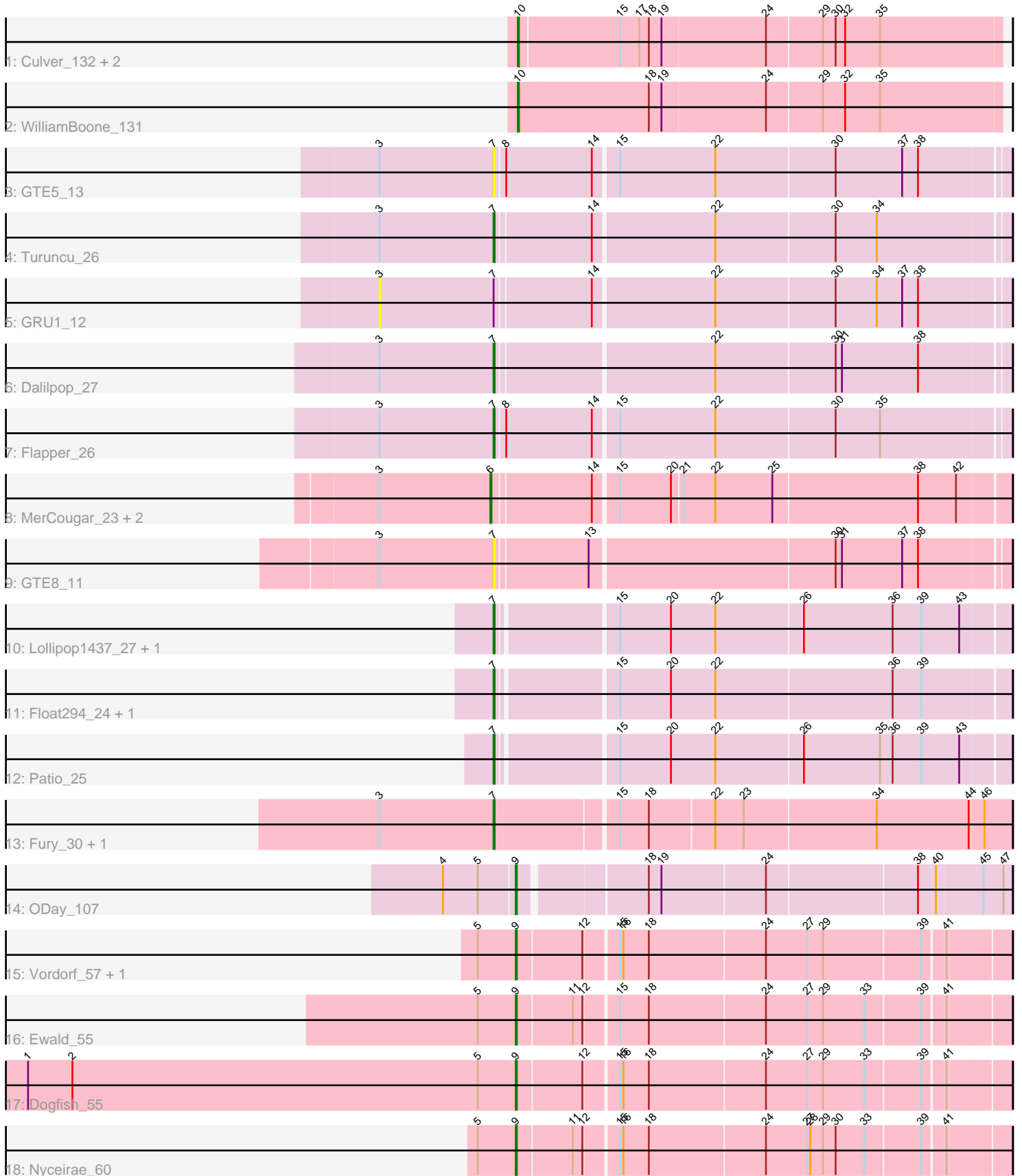


Pham 163875



Note: Tracks are now grouped by subcluster and scaled. Switching in subcluster is indicated by changes in track color. Track scale is now set by default to display the region 30 bp upstream of start 1 to 30 bp downstream of the last possible start. If this default region is judged to be packed too tightly with annotated starts, the track will be further scaled to only show that region of the ORF with annotated starts. This action will be indicated by adding "Zoomed" to the title. For starts, yellow indicates the location of called starts comprised solely of Glimmer/GeneMark auto-annotations, green indicates the location of called starts with at least 1 manual gene annotation.

Pham 163875 Report

This analysis was run 04/28/24 on database version 559.

Pham number 163875 has 26 members, 4 are drafts.

Phages represented in each track:

- Track 1 : Culver_132, Norvs_131, PhinkBoden_132
- Track 2 : WilliamBoone_131
- Track 3 : GTE5_13
- Track 4 : Turuncu_26
- Track 5 : GRU1_12
- Track 6 : Dalilpop_27
- Track 7 : Flapper_26
- Track 8 : MerCougar_23, StarStruck_23, Outis_23
- Track 9 : GTE8_11
- Track 10 : Lollipop1437_27, Ennea_28
- Track 11 : Float294_24, Skysand_24
- Track 12 : Patio_25
- Track 13 : Fury_30, Pleakley_30
- Track 14 : ODay_107
- Track 15 : Vordorf_57, Phishy_58
- Track 16 : Ewald_55
- Track 17 : Dogfish_55
- Track 18 : Nyceirae_60

Summary of Final Annotations (See graph section above for start numbers):

The start number called the most often in the published annotations is 7, it was called in 10 of the 22 non-draft genes in the pham.

Genes that call this "Most Annotated" start:

- Dalilpop_27, Ennea_28, Flapper_26, Float294_24, Fury_30, GTE5_13, GTE8_11, Lollipop1437_27, Patio_25, Pleakley_30, Skysand_24, Turuncu_26,

Genes that have the "Most Annotated" start but do not call it:

- GRU1_12,

Genes that do not have the "Most Annotated" start:

- Culver_132, Dogfish_55, Ewald_55, MerCougar_23, Norvs_131, Nyceirae_60, ODay_107, Outis_23, PhinkBoden_132, Phishy_58, StarStruck_23, Vordorf_57,

WilliamBoone_131,

Summary by start number:

Start 3:

- Found in 11 of 26 (42.3%) of genes in pham
- No Manual Annotations of this start.
- Called 9.1% of time when present
- Phage (with cluster) where this start called: GRU1_12 (CR1),

Start 6:

- Found in 3 of 26 (11.5%) of genes in pham
- Manual Annotations of this start: 3 of 22
- Called 100.0% of time when present
- Phage (with cluster) where this start called: MerCougar_23 (CR2), Outis_23 (CR2), StarStruck_23 (CR2),

Start 7:

- Found in 13 of 26 (50.0%) of genes in pham
- Manual Annotations of this start: 10 of 22
- Called 92.3% of time when present
- Phage (with cluster) where this start called: Dalilpop_27 (CR1), Ennea_28 (CR3), Flapper_26 (CR1), Float294_24 (CR3), Fury_30 (CR5), GTE5_13 (CR1), GTE8_11 (CR2), Lollipop1437_27 (CR3), Patio_25 (CR3), Pleakley_30 (CR5), Skysand_24 (CR3), Turuncu_26 (CR1),

Start 9:

- Found in 6 of 26 (23.1%) of genes in pham
- Manual Annotations of this start: 5 of 22
- Called 100.0% of time when present
- Phage (with cluster) where this start called: Dogfish_55 (DT), Ewald_55 (DT), Nyceirae_60 (DT), ODay_107 (DN), Phishy_58 (DT), Vordorf_57 (DT),

Start 10:

- Found in 4 of 26 (15.4%) of genes in pham
- Manual Annotations of this start: 4 of 22
- Called 100.0% of time when present
- Phage (with cluster) where this start called: Culver_132 (CQ1), Norvs_131 (CQ), PhinkBoden_132 (CQ1), WilliamBoone_131 (CQ1),

Summary by clusters:

There are 8 clusters represented in this pham: CR2, DN, CR1, CR3, CR5, DT, CQ, CQ1,

Info for manual annotations of cluster CQ:

- Start number 10 was manually annotated 1 time for cluster CQ.

Info for manual annotations of cluster CQ1:

- Start number 10 was manually annotated 3 times for cluster CQ1.

Info for manual annotations of cluster CR1:

- Start number 7 was manually annotated 3 times for cluster CR1.

Info for manual annotations of cluster CR2:

- Start number 6 was manually annotated 3 times for cluster CR2.

Info for manual annotations of cluster CR3:

- Start number 7 was manually annotated 5 times for cluster CR3.

Info for manual annotations of cluster CR5:

- Start number 7 was manually annotated 2 times for cluster CR5.

Info for manual annotations of cluster DN:

- Start number 9 was manually annotated 1 time for cluster DN.

Info for manual annotations of cluster DT:

- Start number 9 was manually annotated 4 times for cluster DT.

Gene Information:

Gene: Culver_132 Start: 72567, Stop: 73013, Start Num: 10

Candidate Starts for Culver_132:

(Start: 10 @72567 has 4 MA's), (15, 72660), (17, 72678), (18, 72687), (19, 72699), (24, 72795), (29, 72846), (30, 72858), (32, 72867), (35, 72900),

Gene: Dalilpop_27 Start: 13666, Stop: 14133, Start Num: 7

Candidate Starts for Dalilpop_27:

(3, 13558), (Start: 7 @13666 has 10 MA's), (22, 13864), (30, 13975), (31, 13981), (38, 14053),

Gene: Dogfish_55 Start: 40918, Stop: 41358, Start Num: 9

Candidate Starts for Dogfish_55:

(1, 40456), (2, 40498), (5, 40882), (Start: 9 @40918 has 5 MA's), (12, 40978), (15, 41005), (16, 41008), (18, 41032), (24, 41140), (27, 41179), (29, 41194), (33, 41233), (39, 41284), (41, 41302),

Gene: Ennea_28 Start: 12848, Stop: 13315, Start Num: 7

Candidate Starts for Ennea_28:

(Start: 7 @12848 has 10 MA's), (15, 12953), (20, 13001), (22, 13043), (26, 13124), (36, 13208), (39, 13235), (43, 13271),

Gene: Ewald_55 Start: 40465, Stop: 40905, Start Num: 9

Candidate Starts for Ewald_55:

(5, 40429), (Start: 9 @40465 has 5 MA's), (11, 40516), (12, 40525), (15, 40552), (18, 40579), (24, 40687), (27, 40726), (29, 40741), (33, 40780), (39, 40831), (41, 40849),

Gene: Flapper_26 Start: 12739, Stop: 13209, Start Num: 7

Candidate Starts for Flapper_26:

(3, 12631), (Start: 7 @12739 has 10 MA's), (8, 12748), (14, 12829), (15, 12850), (22, 12940), (30, 13051), (35, 13093),

Gene: Float294_24 Start: 12290, Stop: 12757, Start Num: 7

Candidate Starts for Float294_24:

(Start: 7 @12290 has 10 MA's), (15, 12395), (20, 12443), (22, 12485), (36, 12650), (39, 12677),

Gene: Fury_30 Start: 11734, Stop: 12207, Start Num: 7

Candidate Starts for Fury_30:

(3, 11626), (Start: 7 @11734 has 10 MA's), (15, 11845), (18, 11872), (22, 11932), (23, 11959), (34, 12082), (44, 12169), (46, 12181),

Gene: GRU1_12 Start: 4519, Stop: 5094, Start Num: 3

Candidate Starts for GRU1_12:

(3, 4519), (Start: 7 @4627 has 10 MA's), (14, 4714), (22, 4825), (30, 4936), (34, 4975), (37, 4999), (38, 5014),

Gene: GTE5_13 Start: 5633, Stop: 6103, Start Num: 7

Candidate Starts for GTE5_13:

(3, 5525), (Start: 7 @5633 has 10 MA's), (8, 5642), (14, 5723), (15, 5744), (22, 5834), (30, 5945), (37, 6008), (38, 6023),

Gene: GTE8_11 Start: 5527, Stop: 5994, Start Num: 7

Candidate Starts for GTE8_11:

(3, 5419), (Start: 7 @5527 has 10 MA's), (13, 5611), (30, 5836), (31, 5842), (37, 5899), (38, 5914),

Gene: Lollipop1437_27 Start: 12836, Stop: 13303, Start Num: 7

Candidate Starts for Lollipop1437_27:

(Start: 7 @12836 has 10 MA's), (15, 12941), (20, 12989), (22, 13031), (26, 13112), (36, 13196), (39, 13223), (43, 13259),

Gene: MerCougar_23 Start: 12188, Stop: 12658, Start Num: 6

Candidate Starts for MerCougar_23:

(3, 12083), (Start: 6 @12188 has 3 MA's), (14, 12278), (15, 12299), (20, 12347), (21, 12356), (22, 12386), (25, 12440), (38, 12575), (42, 12611),

Gene: Norvs_131 Start: 73289, Stop: 73735, Start Num: 10

Candidate Starts for Norvs_131:

(Start: 10 @73289 has 4 MA's), (15, 73382), (17, 73400), (18, 73409), (19, 73421), (24, 73517), (29, 73568), (30, 73580), (32, 73589), (35, 73622),

Gene: Nyceirae_60 Start: 40868, Stop: 41308, Start Num: 9

Candidate Starts for Nyceirae_60:

(5, 40832), (Start: 9 @40868 has 5 MA's), (11, 40919), (12, 40928), (15, 40955), (16, 40958), (18, 40982), (24, 41090), (27, 41129), (28, 41132), (29, 41144), (30, 41156), (33, 41183), (39, 41234), (41, 41252),

Gene: ODay_107 Start: 55037, Stop: 55477, Start Num: 9

Candidate Starts for ODay_107:

(4, 54971), (5, 55004), (Start: 9 @55037 has 5 MA's), (18, 55148), (19, 55160), (24, 55256), (38, 55394), (40, 55409), (45, 55451), (47, 55469),

Gene: Outis_23 Start: 11882, Stop: 12352, Start Num: 6

Candidate Starts for Outis_23:

(3, 11777), (Start: 6 @11882 has 3 MA's), (14, 11972), (15, 11993), (20, 12041), (21, 12050), (22, 12080), (25, 12134), (38, 12269), (42, 12305),

Gene: Patio_25 Start: 12072, Stop: 12539, Start Num: 7

Candidate Starts for Patio_25:

(Start: 7 @12072 has 10 MA's), (15, 12177), (20, 12225), (22, 12267), (26, 12348), (35, 12420), (36, 12432), (39, 12459), (43, 12495),

Gene: PhinkBoden_132 Start: 74154, Stop: 74600, Start Num: 10

Candidate Starts for PhinkBoden_132:

(Start: 10 @74154 has 4 MA's), (15, 74247), (17, 74265), (18, 74274), (19, 74286), (24, 74382), (29, 74433), (30, 74445), (32, 74454), (35, 74487),

Gene: Phishy_58 Start: 42072, Stop: 42512, Start Num: 9

Candidate Starts for Phishy_58:

(5, 42036), (Start: 9 @42072 has 5 MA's), (12, 42132), (15, 42159), (16, 42162), (18, 42186), (24, 42294), (27, 42333), (29, 42348), (39, 42438), (41, 42456),

Gene: Pleakley_30 Start: 11735, Stop: 12208, Start Num: 7

Candidate Starts for Pleakley_30:

(3, 11627), (Start: 7 @11735 has 10 MA's), (15, 11846), (18, 11873), (22, 11933), (23, 11960), (34, 12083), (44, 12170), (46, 12182),

Gene: Skysand_24 Start: 12292, Stop: 12759, Start Num: 7

Candidate Starts for Skysand_24:

(Start: 7 @12292 has 10 MA's), (15, 12397), (20, 12445), (22, 12487), (36, 12652), (39, 12679),

Gene: StarStruck_23 Start: 11882, Stop: 12352, Start Num: 6

Candidate Starts for StarStruck_23:

(3, 11777), (Start: 6 @11882 has 3 MA's), (14, 11972), (15, 11993), (20, 12041), (21, 12050), (22, 12080), (25, 12134), (38, 12269), (42, 12305),

Gene: Turuncu_26 Start: 12436, Stop: 12903, Start Num: 7

Candidate Starts for Turuncu_26:

(3, 12328), (Start: 7 @12436 has 10 MA's), (14, 12523), (22, 12634), (30, 12745), (34, 12784),

Gene: Vordorf_57 Start: 40657, Stop: 41097, Start Num: 9

Candidate Starts for Vordorf_57:

(5, 40621), (Start: 9 @40657 has 5 MA's), (12, 40717), (15, 40744), (16, 40747), (18, 40771), (24, 40879), (27, 40918), (29, 40933), (39, 41023), (41, 41041),

Gene: WilliamBoone_131 Start: 71084, Stop: 71533, Start Num: 10

Candidate Starts for WilliamBoone_131:

(Start: 10 @71084 has 4 MA's), (18, 71207), (19, 71219), (24, 71315), (29, 71366), (32, 71387), (35, 71420),