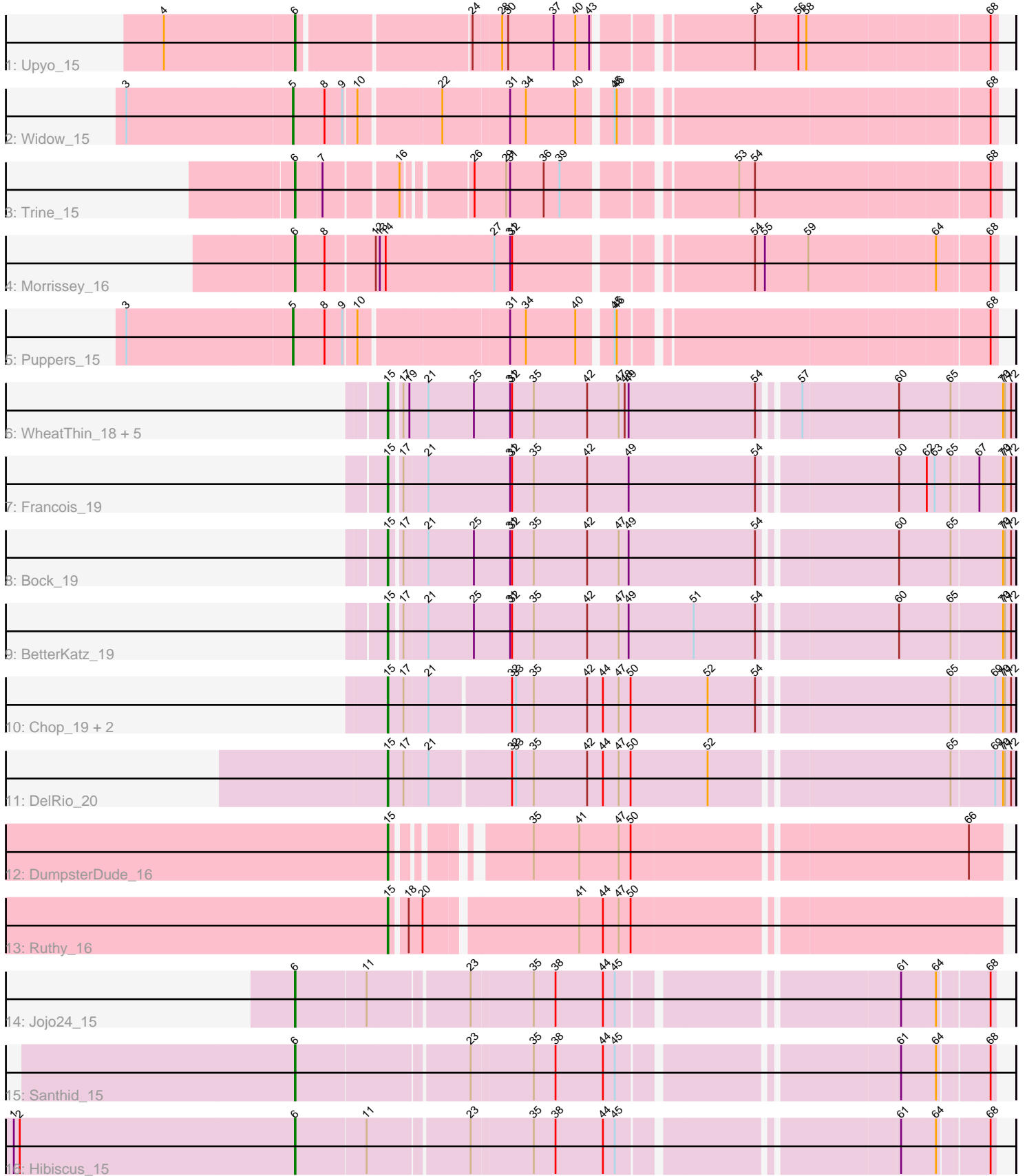


Pham 163904



Note: Tracks are now grouped by subcluster and scaled. Switching in subcluster is indicated by changes in track color. Track scale is now set by default to display the region 30 bp upstream of start 1 to 30 bp downstream of the last possible start. If this default region is judged to be packed too tightly with annotated starts, the track will be further scaled to only show that region of the ORF with annotated starts. This action will be indicated by adding "Zoomed" to the title. For starts, yellow indicates the location of called starts comprised solely of Glimmer/GeneMark auto-annotations, green indicates the location of called starts with at least 1 manual gene annotation.

Pham 163904 Report

This analysis was run 04/28/24 on database version 559.

Pham number 163904 has 23 members, 0 are drafts.

Phages represented in each track:

- Track 1 : Upyo_15
- Track 2 : Widow_15
- Track 3 : Trine_15
- Track 4 : Morrissey_16
- Track 5 : Puppies_15
- Track 6 : WheatThin_18, Nadeem_19, Parada_19, Brylie_19, Mulch_19, NancyRae_19
- Track 7 : Francois_19
- Track 8 : Bock_19
- Track 9 : BetterKatz_19
- Track 10 : Chop_19, GrandSlam_19, Ayotoya_19
- Track 11 : DelRio_20
- Track 12 : DumpsterDude_16
- Track 13 : Ruthy_16
- Track 14 : Jojo24_15
- Track 15 : Santhid_15
- Track 16 : Hibiscus_15

Summary of Final Annotations (See graph section above for start numbers):

The start number called the most often in the published annotations is 15, it was called in 15 of the 23 non-draft genes in the pham.

Genes that call this "Most Annotated" start:

- Ayotoya_19, BetterKatz_19, Bock_19, Brylie_19, Chop_19, DelRio_20, DumpsterDude_16, Francois_19, GrandSlam_19, Mulch_19, Nadeem_19, NancyRae_19, Parada_19, Ruthy_16, WheatThin_18,

Genes that have the "Most Annotated" start but do not call it:

-

Genes that do not have the "Most Annotated" start:

- Hibiscus_15, Jojo24_15, Morrissey_16, Puppies_15, Santhid_15, Trine_15, Upyo_15, Widow_15,

Summary by start number:

Start 5:

- Found in 2 of 23 (8.7%) of genes in pham
- Manual Annotations of this start: 2 of 23
- Called 100.0% of time when present
- Phage (with cluster) where this start called: Puppies_15 (CD), Widow_15 (CD),

Start 6:

- Found in 6 of 23 (26.1%) of genes in pham
- Manual Annotations of this start: 6 of 23
- Called 100.0% of time when present
- Phage (with cluster) where this start called: Hibiscus_15 (DY), Jojo24_15 (DY), Morrissey_16 (CD), Santhid_15 (DY), Trine_15 (CD), Upyo_15 (CD),

Start 15:

- Found in 15 of 23 (65.2%) of genes in pham
- Manual Annotations of this start: 15 of 23
- Called 100.0% of time when present
- Phage (with cluster) where this start called: Ayotoya_19 (DI), BetterKatz_19 (DI), Bock_19 (DI), Brylie_19 (DI), Chop_19 (DI), DelRio_20 (DI), DumpsterDude_16 (DW), Francois_19 (DI), GrandSlam_19 (DI), Mulch_19 (DI), Nadeem_19 (DI), NancyRae_19 (DI), Parada_19 (DI), Ruthy_16 (DW), WheatThin_18 (DI),

Summary by clusters:

There are 4 clusters represented in this pham: DW, CD, DI, DY,

Info for manual annotations of cluster CD:

- Start number 5 was manually annotated 2 times for cluster CD.
- Start number 6 was manually annotated 3 times for cluster CD.

Info for manual annotations of cluster DI:

- Start number 15 was manually annotated 13 times for cluster DI.

Info for manual annotations of cluster DW:

- Start number 15 was manually annotated 2 times for cluster DW.

Info for manual annotations of cluster DY:

- Start number 6 was manually annotated 3 times for cluster DY.

Gene Information:

Gene: Ayotoya_19 Start: 10919, Stop: 11826, Start Num: 15

Candidate Starts for Ayotoya_19:

(Start: 15 @10919 has 15 MA's), (17, 10943), (21, 10976), (32, 11093), (33, 11099), (35, 11126), (42, 11207), (44, 11231), (47, 11255), (50, 11273), (52, 11390), (54, 11462), (65, 11732), (69, 11795), (70, 11807), (71, 11810), (72, 11819),

Gene: BetterKatz_19 Start: 10860, Stop: 11764, Start Num: 15

Candidate Starts for BetterKatz_19:

(Start: 15 @10860 has 15 MA's), (17, 10875), (21, 10908), (25, 10977), (31, 11031), (32, 11034), (35, 11067), (42, 11148), (47, 11196), (49, 11211), (51, 11310), (54, 11403), (60, 11592), (65, 11670), (70, 11745), (71, 11748), (72, 11757),

Gene: Bock_19 Start: 10610, Stop: 11514, Start Num: 15

Candidate Starts for Bock_19:

(Start: 15 @10610 has 15 MA's), (17, 10625), (21, 10658), (25, 10727), (31, 10781), (32, 10784), (35, 10817), (42, 10898), (47, 10946), (49, 10961), (54, 11153), (60, 11342), (65, 11420), (70, 11495), (71, 11498), (72, 11507),

Gene: Brylie_19 Start: 10607, Stop: 11511, Start Num: 15

Candidate Starts for Brylie_19:

(Start: 15 @10607 has 15 MA's), (17, 10622), (19, 10631), (21, 10655), (25, 10724), (31, 10778), (32, 10781), (35, 10814), (42, 10895), (47, 10943), (48, 10952), (49, 10958), (54, 11150), (57, 11198), (60, 11339), (65, 11417), (70, 11492), (71, 11495), (72, 11504),

Gene: Chop_19 Start: 10667, Stop: 11574, Start Num: 15

Candidate Starts for Chop_19:

(Start: 15 @10667 has 15 MA's), (17, 10691), (21, 10724), (32, 10841), (33, 10847), (35, 10874), (42, 10955), (44, 10979), (47, 11003), (50, 11021), (52, 11138), (54, 11210), (65, 11480), (69, 11543), (70, 11555), (71, 11558), (72, 11567),

Gene: DelRio_20 Start: 11141, Stop: 12048, Start Num: 15

Candidate Starts for DelRio_20:

(Start: 15 @11141 has 15 MA's), (17, 11165), (21, 11198), (32, 11315), (33, 11321), (35, 11348), (42, 11429), (44, 11453), (47, 11477), (50, 11495), (52, 11612), (65, 11954), (69, 12017), (70, 12029), (71, 12032), (72, 12041),

Gene: DumpsterDude_16 Start: 9345, Stop: 10174, Start Num: 15

Candidate Starts for DumpsterDude_16:

(Start: 15 @9345 has 15 MA's), (35, 9495), (41, 9564), (47, 9624), (50, 9642), (66, 10125),

Gene: Francois_19 Start: 10624, Stop: 11528, Start Num: 15

Candidate Starts for Francois_19:

(Start: 15 @10624 has 15 MA's), (17, 10639), (21, 10672), (31, 10795), (32, 10798), (35, 10831), (42, 10912), (49, 10975), (54, 11167), (60, 11356), (62, 11398), (63, 11410), (65, 11434), (67, 11473), (70, 11509), (71, 11512), (72, 11521),

Gene: GrandSlam_19 Start: 10667, Stop: 11574, Start Num: 15

Candidate Starts for GrandSlam_19:

(Start: 15 @10667 has 15 MA's), (17, 10691), (21, 10724), (32, 10841), (33, 10847), (35, 10874), (42, 10955), (44, 10979), (47, 11003), (50, 11021), (52, 11138), (54, 11210), (65, 11480), (69, 11543), (70, 11555), (71, 11558), (72, 11567),

Gene: Hibiscus_15 Start: 8943, Stop: 9913, Start Num: 6

Candidate Starts for Hibiscus_15:

(1, 8517), (2, 8526), (Start: 6 @8943 has 6 MA's), (11, 9048), (23, 9192), (35, 9282), (38, 9315), (44, 9387), (45, 9405), (61, 9786), (64, 9837), (68, 9906),

Gene: Jojo24_15 Start: 8937, Stop: 9907, Start Num: 6

Candidate Starts for Jojo24_15:

(Start: 6 @8937 has 6 MA's), (11, 9042), (23, 9186), (35, 9276), (38, 9309), (44, 9381), (45, 9399), (61, 9780), (64, 9831), (68, 9900),

Gene: Morrissey_16 Start: 9186, Stop: 10171, Start Num: 6

Candidate Starts for Morrissey_16:

(Start: 6 @9186 has 6 MA's), (8, 9228), (12, 9300), (13, 9306), (14, 9315), (27, 9471), (31, 9495), (32, 9498), (54, 9822), (55, 9837), (59, 9903), (64, 10086), (68, 10161),

Gene: Mulch_19 Start: 10607, Stop: 11511, Start Num: 15

Candidate Starts for Mulch_19:

(Start: 15 @10607 has 15 MA's), (17, 10622), (19, 10631), (21, 10655), (25, 10724), (31, 10778), (32, 10781), (35, 10814), (42, 10895), (47, 10943), (48, 10952), (49, 10958), (54, 11150), (57, 11198), (60, 11339), (65, 11417), (70, 11492), (71, 11495), (72, 11504),

Gene: Nadeem_19 Start: 10607, Stop: 11511, Start Num: 15

Candidate Starts for Nadeem_19:

(Start: 15 @10607 has 15 MA's), (17, 10622), (19, 10631), (21, 10655), (25, 10724), (31, 10778), (32, 10781), (35, 10814), (42, 10895), (47, 10943), (48, 10952), (49, 10958), (54, 11150), (57, 11198), (60, 11339), (65, 11417), (70, 11492), (71, 11495), (72, 11504),

Gene: NancyRae_19 Start: 10607, Stop: 11511, Start Num: 15

Candidate Starts for NancyRae_19:

(Start: 15 @10607 has 15 MA's), (17, 10622), (19, 10631), (21, 10655), (25, 10724), (31, 10778), (32, 10781), (35, 10814), (42, 10895), (47, 10943), (48, 10952), (49, 10958), (54, 11150), (57, 11198), (60, 11339), (65, 11417), (70, 11492), (71, 11495), (72, 11504),

Gene: Parada_19 Start: 10607, Stop: 11511, Start Num: 15

Candidate Starts for Parada_19:

(Start: 15 @10607 has 15 MA's), (17, 10622), (19, 10631), (21, 10655), (25, 10724), (31, 10778), (32, 10781), (35, 10814), (42, 10895), (47, 10943), (48, 10952), (49, 10958), (54, 11150), (57, 11198), (60, 11339), (65, 11417), (70, 11492), (71, 11495), (72, 11504),

Gene: Puppies_15 Start: 8726, Stop: 9696, Start Num: 5

Candidate Starts for Puppies_15:

(3, 8477), (Start: 5 @8726 has 2 MA's), (8, 8768), (9, 8795), (10, 8813), (31, 9023), (34, 9047), (40, 9122), (45, 9167), (46, 9170), (68, 9686),

Gene: Ruthy_16 Start: 9419, Stop: 10284, Start Num: 15

Candidate Starts for Ruthy_16:

(Start: 15 @9419 has 15 MA's), (18, 9440), (20, 9458), (41, 9674), (44, 9710), (47, 9734), (50, 9752),

Gene: Santhid_15 Start: 8945, Stop: 9915, Start Num: 6

Candidate Starts for Santhid_15:

(Start: 6 @8945 has 6 MA's), (23, 9194), (35, 9284), (38, 9317), (44, 9389), (45, 9407), (61, 9788), (64, 9839), (68, 9908),

Gene: Trine_15 Start: 8732, Stop: 9684, Start Num: 6

Candidate Starts for Trine_15:

(Start: 6 @8732 has 6 MA's), (7, 8768), (16, 8867), (26, 8948), (29, 8996), (31, 9002), (36, 9053), (39, 9077), (53, 9305), (54, 9329), (68, 9668),

Gene: Upyo_15 Start: 8842, Stop: 9809, Start Num: 6

Candidate Starts for Upyo_15:

(4, 8647), (Start: 6 @8842 has 6 MA's), (24, 9082), (28, 9121), (30, 9130), (37, 9199), (40, 9232), (43, 9253), (54, 9460), (56, 9526), (58, 9538), (68, 9799),

Gene: WheatThin_18 Start: 10607, Stop: 11511, Start Num: 15

Candidate Starts for WheatThin_18:

(Start: 15 @10607 has 15 MA's), (17, 10622), (19, 10631), (21, 10655), (25, 10724), (31, 10778), (32, 10781), (35, 10814), (42, 10895), (47, 10943), (48, 10952), (49, 10958), (54, 11150), (57, 11198), (60, 11339), (65, 11417), (70, 11492), (71, 11495), (72, 11504),

Gene: Widow_15 Start: 8717, Stop: 9687, Start Num: 5

Candidate Starts for Widow_15:

(3, 8468), (Start: 5 @8717 has 2 MA's), (8, 8759), (9, 8786), (10, 8804), (22, 8918), (31, 9014), (34, 9038), (40, 9113), (45, 9158), (46, 9161), (68, 9677),