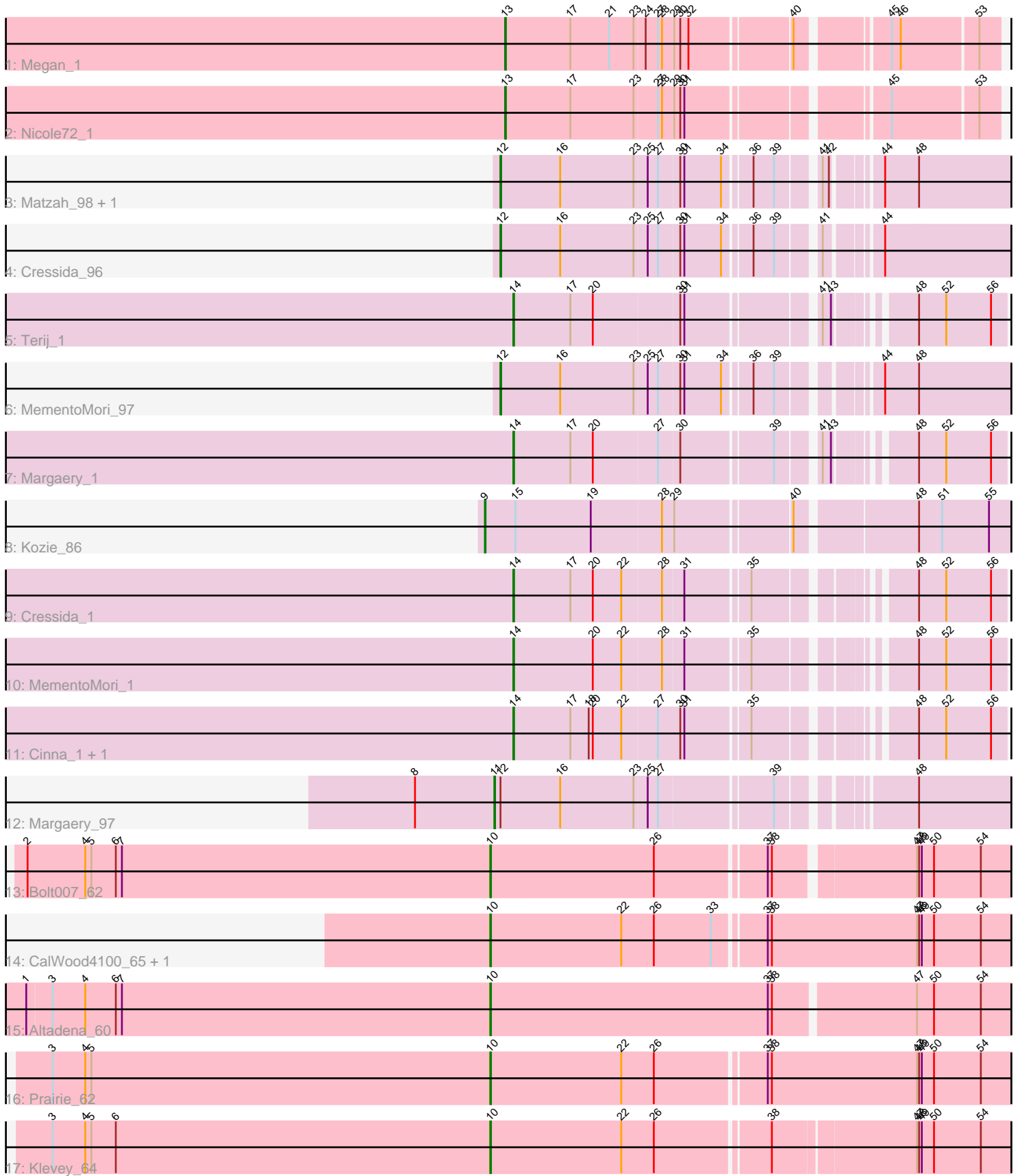


Pham 163939



Note: Tracks are now grouped by subcluster and scaled. Switching in subcluster is indicated by changes in track color. Track scale is now set by default to display the region 30 bp upstream of start 1 to 30 bp downstream of the last possible start. If this default region is judged to be packed too tightly with annotated starts, the track will be further scaled to only show that region of the ORF with annotated starts. This action will be indicated by adding "Zoomed" to the title. For starts, yellow indicates the location of called starts comprised solely of Glimmer/GeneMark auto-annotations, green indicates the location of called starts with at least 1 manual gene annotation.

Pham 163939 Report

This analysis was run 04/28/24 on database version 559.

Pham number 163939 has 20 members, 1 are drafts.

Phages represented in each track:

- Track 1 : Megan_1
- Track 2 : Nicole72_1
- Track 3 : Matzah_98, Cinna_94
- Track 4 : Cressida_96
- Track 5 : Terij_1
- Track 6 : MementoMori_97
- Track 7 : Margaery_1
- Track 8 : Kozie_86
- Track 9 : Cressida_1
- Track 10 : MementoMori_1
- Track 11 : Cinna_1, Matzah_1
- Track 12 : Margaery_97
- Track 13 : Bolt007_62
- Track 14 : CalWood4100_65, Lilmac1015_65
- Track 15 : Altadena_60
- Track 16 : Prairie_62
- Track 17 : Klevey_64

Summary of Final Annotations (See graph section above for start numbers):

The start number called the most often in the published annotations is 14, it was called in 6 of the 19 non-draft genes in the pham.

Genes that call this "Most Annotated" start:

- Cinna_1, Cressida_1, Margaery_1, Matzah_1, MementoMori_1, Terij_1,

Genes that have the "Most Annotated" start but do not call it:

-

Genes that do not have the "Most Annotated" start:

- Altadena_60, Bolt007_62, CalWood4100_65, Cinna_94, Cressida_96, Klevey_64, Kozie_86, Lilmac1015_65, Margaery_97, Matzah_98, Megan_1, MementoMori_97, Nicole72_1, Prairie_62,

Summary by start number:

Start 9:

- Found in 1 of 20 (5.0%) of genes in pham
- Manual Annotations of this start: 1 of 19
- Called 100.0% of time when present
- Phage (with cluster) where this start called: Kozie_86 (EI),

Start 10:

- Found in 6 of 20 (30.0%) of genes in pham
- Manual Annotations of this start: 5 of 19
- Called 100.0% of time when present
- Phage (with cluster) where this start called: Altadena_60 (FH), Bolt007_62 (FH), CalWood4100_65 (FH), Klevey_64 (FH), Lilmac1015_65 (FH), Prairie_62 (FH),

Start 11:

- Found in 1 of 20 (5.0%) of genes in pham
- Manual Annotations of this start: 1 of 19
- Called 100.0% of time when present
- Phage (with cluster) where this start called: Margaery_97 (EI),

Start 12:

- Found in 5 of 20 (25.0%) of genes in pham
- Manual Annotations of this start: 4 of 19
- Called 80.0% of time when present
- Phage (with cluster) where this start called: Cinna_94 (EI), Cressida_96 (EI), Matzah_98 (EI), MementoMori_97 (EI),

Start 13:

- Found in 2 of 20 (10.0%) of genes in pham
- Manual Annotations of this start: 2 of 19
- Called 100.0% of time when present
- Phage (with cluster) where this start called: Megan_1 (EC), Nicole72_1 (EC),

Start 14:

- Found in 6 of 20 (30.0%) of genes in pham
- Manual Annotations of this start: 6 of 19
- Called 100.0% of time when present
- Phage (with cluster) where this start called: Cinna_1 (EI), Cressida_1 (EI), Margaery_1 (EI), Matzah_1 (EI), MementoMori_1 (EI), Terij_1 (EI),

Summary by clusters:

There are 3 clusters represented in this pham: FH, EI, EC,

Info for manual annotations of cluster EC:

- Start number 13 was manually annotated 2 times for cluster EC.

Info for manual annotations of cluster EI:

- Start number 9 was manually annotated 1 time for cluster EI.
- Start number 11 was manually annotated 1 time for cluster EI.
- Start number 12 was manually annotated 4 times for cluster EI.
- Start number 14 was manually annotated 6 times for cluster EI.

Info for manual annotations of cluster FH:

•Start number 10 was manually annotated 5 times for cluster FH.

Gene Information:

Gene: Altadena_60 Start: 38689, Stop: 39465, Start Num: 10

Candidate Starts for Altadena_60:

(1, 38008), (3, 38044), (4, 38092), (6, 38137), (7, 38146), (Start: 10 @38689 has 5 MA's), (37, 39097), (38, 39103), (47, 39301), (50, 39325), (54, 39394),

Gene: Bolt007_62 Start: 40946, Stop: 41710, Start Num: 10

Candidate Starts for Bolt007_62:

(2, 40265), (4, 40349), (5, 40358), (6, 40394), (7, 40403), (Start: 10 @40946 has 5 MA's), (26, 41186), (37, 41339), (38, 41345), (47, 41537), (48, 41540), (49, 41543), (50, 41561), (54, 41630),

Gene: CalWood4100_65 Start: 40886, Stop: 41671, Start Num: 10

Candidate Starts for CalWood4100_65:

(Start: 10 @40886 has 5 MA's), (22, 41078), (26, 41126), (33, 41210), (37, 41279), (38, 41285), (47, 41498), (48, 41501), (49, 41504), (50, 41522), (54, 41591),

Gene: Cinna_94 Start: 54580, Stop: 55263, Start Num: 12

Candidate Starts for Cinna_94:

(Start: 12 @54580 has 4 MA's), (16, 54667), (23, 54775), (25, 54793), (27, 54808), (30, 54838), (31, 54844), (34, 54898), (36, 54934), (39, 54964), (41, 55015), (42, 55024), (44, 55081), (48, 55129),

Gene: Cinna_1 Start: 1, Stop: 648, Start Num: 14

Candidate Starts for Cinna_1:

(Start: 14 @1 has 6 MA's), (17, 85), (18, 112), (20, 118), (22, 160), (27, 211), (30, 244), (31, 250), (35, 337), (48, 523), (52, 562), (56, 628),

Gene: Cressida_96 Start: 55174, Stop: 55857, Start Num: 12

Candidate Starts for Cressida_96:

(Start: 12 @55174 has 4 MA's), (16, 55261), (23, 55369), (25, 55387), (27, 55402), (30, 55432), (31, 55438), (34, 55492), (36, 55528), (39, 55558), (41, 55609), (44, 55675),

Gene: Cressida_1 Start: 1, Stop: 645, Start Num: 14

Candidate Starts for Cressida_1:

(Start: 14 @1 has 6 MA's), (17, 85), (20, 118), (22, 160), (28, 217), (31, 247), (35, 334), (48, 520), (52, 559), (56, 625),

Gene: Klevey_64 Start: 40643, Stop: 41416, Start Num: 10

Candidate Starts for Klevey_64:

(3, 39998), (4, 40046), (5, 40055), (6, 40091), (Start: 10 @40643 has 5 MA's), (22, 40835), (26, 40883), (38, 41042), (47, 41243), (48, 41246), (49, 41249), (50, 41267), (54, 41336),

Gene: Kozie_86 Start: 51332, Stop: 52135, Start Num: 9

Candidate Starts for Kozie_86:

(Start: 9 @51332 has 1 MA's), (15, 51377), (19, 51488), (28, 51590), (29, 51605), (40, 51764), (48, 51926), (51, 51959), (55, 52028),

Gene: Lilmac1015_65 Start: 40886, Stop: 41671, Start Num: 10

Candidate Starts for Lilmac1015_65:

(Start: 10 @40886 has 5 MA's), (22, 41078), (26, 41126), (33, 41210), (37, 41279), (38, 41285), (47, 41498), (48, 41501), (49, 41504), (50, 41522), (54, 41591),

Gene: Margaery_1 Start: 1, Stop: 645, Start Num: 14

Candidate Starts for Margaery_1:

(Start: 14 @1 has 6 MA's), (17, 85), (20, 118), (27, 211), (30, 241), (39, 367), (41, 418), (43, 430), (48, 520), (52, 559), (56, 625),

Gene: Margaery_97 Start: 55238, Stop: 55930, Start Num: 11

Candidate Starts for Margaery_97:

(8, 55121), (Start: 11 @55238 has 1 MA's), (Start: 12 @55247 has 4 MA's), (16, 55334), (23, 55442), (25, 55460), (27, 55475), (39, 55631), (48, 55796),

Gene: Matzah_98 Start: 54900, Stop: 55583, Start Num: 12

Candidate Starts for Matzah_98:

(Start: 12 @54900 has 4 MA's), (16, 54987), (23, 55095), (25, 55113), (27, 55128), (30, 55158), (31, 55164), (34, 55218), (36, 55254), (39, 55284), (41, 55335), (42, 55344), (44, 55401), (48, 55449),

Gene: Matzah_1 Start: 1, Stop: 648, Start Num: 14

Candidate Starts for Matzah_1:

(Start: 14 @1 has 6 MA's), (17, 85), (18, 112), (20, 118), (22, 160), (27, 211), (30, 244), (31, 250), (35, 337), (48, 523), (52, 562), (56, 628),

Gene: Megan_1 Start: 1, Stop: 666, Start Num: 13

Candidate Starts for Megan_1:

(Start: 13 @1 has 2 MA's), (17, 97), (21, 154), (23, 190), (24, 205), (27, 223), (28, 229), (29, 244), (30, 253), (32, 265), (40, 403), (45, 517), (46, 529), (53, 637),

Gene: MementoMori_97 Start: 54789, Stop: 55472, Start Num: 12

Candidate Starts for MementoMori_97:

(Start: 12 @54789 has 4 MA's), (16, 54876), (23, 54984), (25, 55002), (27, 55017), (30, 55047), (31, 55053), (34, 55107), (36, 55143), (39, 55173), (44, 55290), (48, 55338),

Gene: MementoMori_1 Start: 1, Stop: 645, Start Num: 14

Candidate Starts for MementoMori_1:

(Start: 14 @1 has 6 MA's), (20, 118), (22, 160), (28, 217), (31, 247), (35, 334), (48, 520), (52, 559), (56, 625),

Gene: Nicole72_1 Start: 1, Stop: 666, Start Num: 13

Candidate Starts for Nicole72_1:

(Start: 13 @1 has 2 MA's), (17, 97), (23, 190), (27, 223), (28, 229), (29, 244), (30, 253), (31, 259), (45, 517), (53, 637),

Gene: Prairie_62 Start: 40182, Stop: 40967, Start Num: 10

Candidate Starts for Prairie_62:

(3, 39537), (4, 39585), (5, 39594), (Start: 10 @40182 has 5 MA's), (22, 40374), (26, 40422), (37, 40575), (38, 40581), (47, 40794), (48, 40797), (49, 40800), (50, 40818), (54, 40887),

Gene: Terij_1 Start: 1, Stop: 645, Start Num: 14

Candidate Starts for Terij_1:

(Start: 14 @1 has 6 MA's), (17, 85), (20, 118), (30, 241), (31, 247), (41, 418), (43, 430), (48, 520), (52, 559), (56, 625),