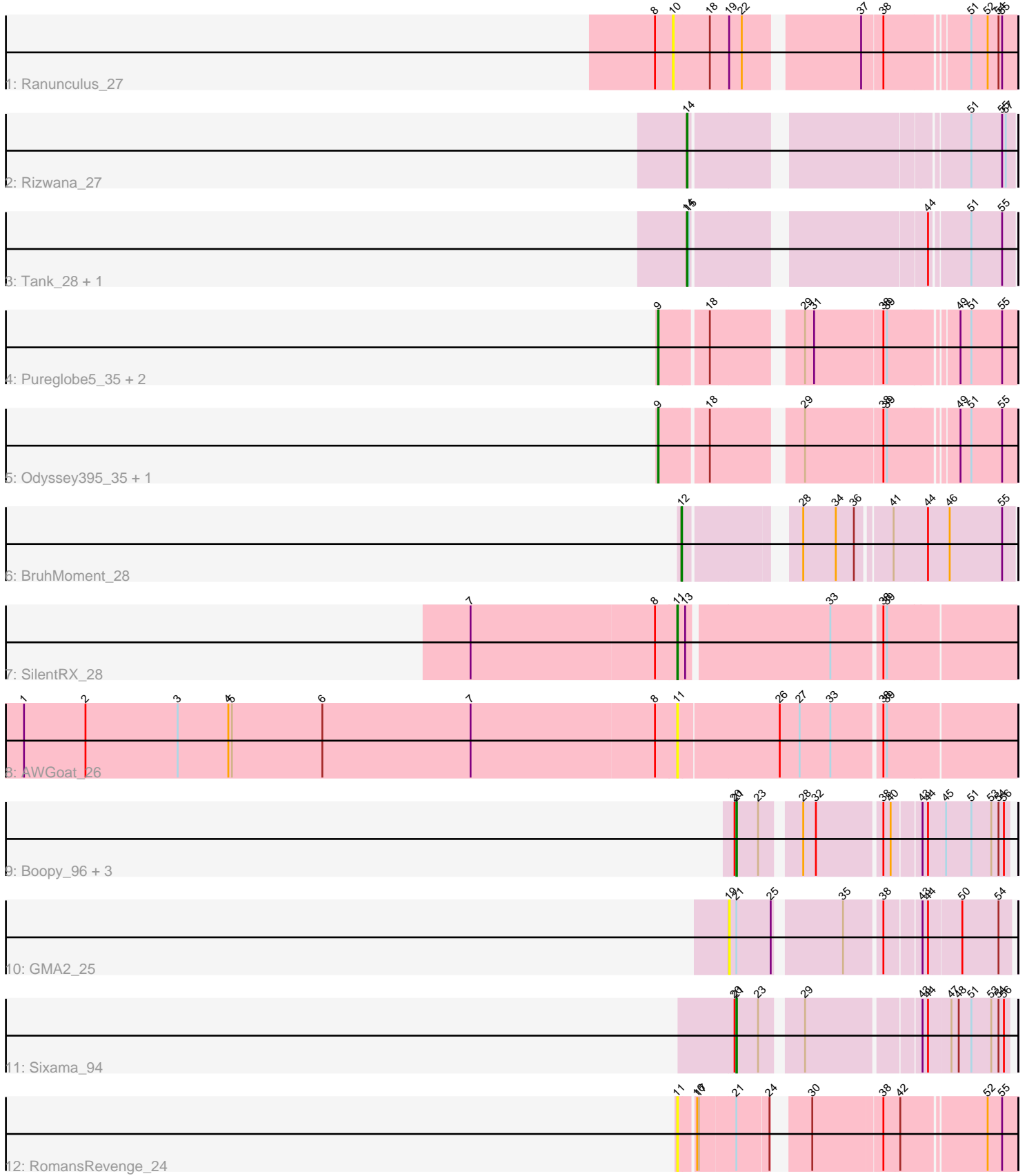


Pham 163959



Note: Tracks are now grouped by subcluster and scaled. Switching in subcluster is indicated by changes in track color. Track scale is now set by default to display the region 30 bp upstream of start 1 to 30 bp downstream of the last possible start. If this default region is judged to be packed too tightly with annotated starts, the track will be further scaled to only show that region of the ORF with annotated starts. This action will be indicated by adding "Zoomed" to the title. For starts, yellow indicates the location of called starts comprised solely of Glimmer/GeneMark auto-annotations, green indicates the location of called starts with at least 1 manual gene annotation.

Pham 163959 Report

This analysis was run 04/28/24 on database version 559.

Pham number 163959 has 19 members, 6 are drafts.

Phages represented in each track:

- Track 1 : Ranunculus_27
- Track 2 : Rizwana_27
- Track 3 : Tank_28, Wilde_28
- Track 4 : Pureglobe5_35, Beagle_34, MellowYellow_28
- Track 5 : Odyssey395_35, Pointis_33
- Track 6 : BruhMoment_28
- Track 7 : SilentRX_28
- Track 8 : AWGoat_26
- Track 9 : Boopy_96, Mareelih_94, BlueNGold_95, Forza_96
- Track 10 : GMA2_25
- Track 11 : Sixama_94
- Track 12 : RomansRevenge_24

Summary of Final Annotations (See graph section above for start numbers):

The start number called the most often in the published annotations is 21, it was called in 5 of the 13 non-draft genes in the pham.

Genes that call this "Most Annotated" start:

- BlueNGold_95, Boopy_96, Forza_96, Mareelih_94, Sixama_94,

Genes that have the "Most Annotated" start but do not call it:

- GMA2_25, RomansRevenge_24,

Genes that do not have the "Most Annotated" start:

- AWGoat_26, Beagle_34, BruhMoment_28, MellowYellow_28, Odyssey395_35, Pointis_33, Pureglobe5_35, Ranunculus_27, Rizwana_27, SilentRX_28, Tank_28, Wilde_28,

Summary by start number:

Start 9:

- Found in 5 of 19 (26.3%) of genes in pham
- Manual Annotations of this start: 3 of 13

- Called 100.0% of time when present
- Phage (with cluster) where this start called: Beagle_34 (AP2), MellowYellow_28 (AP2), Odyssey395_35 (AP2), Pointis_33 (AP2), Pureglobe5_35 (AP2),

Start 10:

- Found in 1 of 19 (5.3%) of genes in pham
- No Manual Annotations of this start.
- Called 100.0% of time when present
- Phage (with cluster) where this start called: Ranunculus_27 (AP),

Start 11:

- Found in 3 of 19 (15.8%) of genes in pham
- Manual Annotations of this start: 1 of 13
- Called 100.0% of time when present
- Phage (with cluster) where this start called: AWGoat_26 (AP4), RomansRevenge_24 (singleton), SilentRX_28 (AP4),

Start 12:

- Found in 1 of 19 (5.3%) of genes in pham
- Manual Annotations of this start: 1 of 13
- Called 100.0% of time when present
- Phage (with cluster) where this start called: BruhMoment_28 (AP3),

Start 14:

- Found in 3 of 19 (15.8%) of genes in pham
- Manual Annotations of this start: 3 of 13
- Called 100.0% of time when present
- Phage (with cluster) where this start called: Rizwana_27 (AP1), Tank_28 (AP1), Wilde_28 (AP1),

Start 19:

- Found in 2 of 19 (10.5%) of genes in pham
- No Manual Annotations of this start.
- Called 50.0% of time when present
- Phage (with cluster) where this start called: GMA2_25 (DS),

Start 21:

- Found in 7 of 19 (36.8%) of genes in pham
- Manual Annotations of this start: 5 of 13
- Called 71.4% of time when present
- Phage (with cluster) where this start called: BlueNGold_95 (DS), Boopy_96 (DS), Forza_96 (DS), Mareelih_94 (DS), Sixama_94 (DS),

Summary by clusters:

There are 7 clusters represented in this pham: singleton, AP2, AP3, AP1, AP4, AP, DS,

Info for manual annotations of cluster AP1:

- Start number 14 was manually annotated 3 times for cluster AP1.

Info for manual annotations of cluster AP2:

- Start number 9 was manually annotated 3 times for cluster AP2.

Info for manual annotations of cluster AP3:

- Start number 12 was manually annotated 1 time for cluster AP3.

Info for manual annotations of cluster AP4:

- Start number 11 was manually annotated 1 time for cluster AP4.

Info for manual annotations of cluster DS:

- Start number 21 was manually annotated 5 times for cluster DS.

Gene Information:

Gene: AWGoat_26 Start: 20869, Stop: 21402, Start Num: 11

Candidate Starts for AWGoat_26:

(1, 19789), (2, 19891), (3, 20044), (4, 20128), (5, 20134), (6, 20284), (7, 20530), (8, 20833), (Start: 11 @20869 has 1 MA's), (26, 21031), (27, 21064), (33, 21115), (38, 21190), (39, 21196),

Gene: Beagle_34 Start: 20341, Stop: 20871, Start Num: 9

Candidate Starts for Beagle_34:

(Start: 9 @20341 has 3 MA's), (18, 20416), (29, 20545), (31, 20560), (38, 20671), (39, 20677), (49, 20779), (51, 20797), (55, 20848),

Gene: BlueNGold_95 Start: 51971, Stop: 52378, Start Num: 21

Candidate Starts for BlueNGold_95:

(20, 51968), (Start: 21 @51971 has 5 MA's), (23, 52007), (28, 52061), (32, 52082), (38, 52184), (40, 52196), (43, 52238), (44, 52247), (45, 52274), (51, 52316), (53, 52349), (54, 52361), (56, 52370),

Gene: Boopy_96 Start: 51983, Stop: 52390, Start Num: 21

Candidate Starts for Boopy_96:

(20, 51980), (Start: 21 @51983 has 5 MA's), (23, 52019), (28, 52073), (32, 52094), (38, 52196), (40, 52208), (43, 52250), (44, 52259), (45, 52286), (51, 52328), (53, 52361), (54, 52373), (56, 52382),

Gene: BruhMoment_28 Start: 19878, Stop: 20363, Start Num: 12

Candidate Starts for BruhMoment_28:

(Start: 12 @19878 has 1 MA's), (28, 20034), (34, 20088), (36, 20118), (41, 20169), (44, 20223), (46, 20259), (55, 20346),

Gene: Forza_96 Start: 51899, Stop: 52306, Start Num: 21

Candidate Starts for Forza_96:

(20, 51896), (Start: 21 @51899 has 5 MA's), (23, 51935), (28, 51989), (32, 52010), (38, 52112), (40, 52124), (43, 52166), (44, 52175), (45, 52202), (51, 52244), (53, 52277), (54, 52289), (56, 52298),

Gene: GMA2_25 Start: 22256, Stop: 22675, Start Num: 19

Candidate Starts for GMA2_25:

(19, 22256), (Start: 21 @22268 has 5 MA's), (25, 22325), (35, 22424), (38, 22481), (43, 22535), (44, 22544), (50, 22595), (54, 22655),

Gene: Mareelih_94 Start: 51401, Stop: 51808, Start Num: 21

Candidate Starts for Mareelih_94:

(20, 51398), (Start: 21 @51401 has 5 MA's), (23, 51437), (28, 51491), (32, 51512), (38, 51614), (40, 51626), (43, 51668), (44, 51677), (45, 51704), (51, 51746), (53, 51779), (54, 51791), (56, 51800),

Gene: MellowYellow_28 Start: 19076, Stop: 19606, Start Num: 9

Candidate Starts for MellowYellow_28:

(Start: 9 @19076 has 3 MA's), (18, 19151), (29, 19280), (31, 19295), (38, 19406), (39, 19412), (49, 19514), (51, 19532), (55, 19583),

Gene: Odyssey395_35 Start: 20354, Stop: 20884, Start Num: 9

Candidate Starts for Odyssey395_35:

(Start: 9 @20354 has 3 MA's), (18, 20429), (29, 20558), (38, 20684), (39, 20690), (49, 20792), (51, 20810), (55, 20861),

Gene: Pointis_33 Start: 20358, Stop: 20888, Start Num: 9

Candidate Starts for Pointis_33:

(Start: 9 @20358 has 3 MA's), (18, 20433), (29, 20562), (38, 20688), (39, 20694), (49, 20796), (51, 20814), (55, 20865),

Gene: Pureglobe5_35 Start: 20541, Stop: 21071, Start Num: 9

Candidate Starts for Pureglobe5_35:

(Start: 9 @20541 has 3 MA's), (18, 20616), (29, 20745), (31, 20760), (38, 20871), (39, 20877), (49, 20979), (51, 20997), (55, 21048),

Gene: Ranunculus_27 Start: 19454, Stop: 19969, Start Num: 10

Candidate Starts for Ranunculus_27:

(8, 19424), (10, 19454), (18, 19514), (19, 19544), (22, 19565), (37, 19736), (38, 19769), (51, 19895), (52, 19922), (54, 19940), (55, 19946),

Gene: Rizwana_27 Start: 19558, Stop: 20037, Start Num: 14

Candidate Starts for Rizwana_27:

(Start: 14 @19558 has 3 MA's), (51, 19966), (55, 20017), (57, 20023),

Gene: RomansRevenge_24 Start: 18816, Stop: 19310, Start Num: 11

Candidate Starts for RomansRevenge_24:

(Start: 11 @18816 has 1 MA's), (16, 18840), (17, 18843), (Start: 21 @18900 has 5 MA's), (24, 18951), (30, 18990), (38, 19101), (42, 19128), (52, 19260), (55, 19284),

Gene: SilentRX_28 Start: 20590, Stop: 21114, Start Num: 11

Candidate Starts for SilentRX_28:

(7, 20251), (8, 20554), (Start: 11 @20590 has 1 MA's), (13, 20602), (33, 20827), (38, 20902), (39, 20908),

Gene: Sixama_94 Start: 51509, Stop: 51916, Start Num: 21

Candidate Starts for Sixama_94:

(20, 51506), (Start: 21 @51509 has 5 MA's), (23, 51545), (29, 51602), (43, 51776), (44, 51785), (47, 51821), (48, 51833), (51, 51854), (53, 51887), (54, 51899), (56, 51908),

Gene: Tank_28 Start: 19505, Stop: 19984, Start Num: 14

Candidate Starts for Tank_28:

(Start: 14 @19505 has 3 MA's), (15, 19508), (44, 19853), (51, 19913), (55, 19964),

Gene: Wilde_28 Start: 19434, Stop: 19913, Start Num: 14

Candidate Starts for Wilde_28:

(Start: 14 @19434 has 3 MA's), (15, 19437), (44, 19782), (51, 19842), (55, 19893),