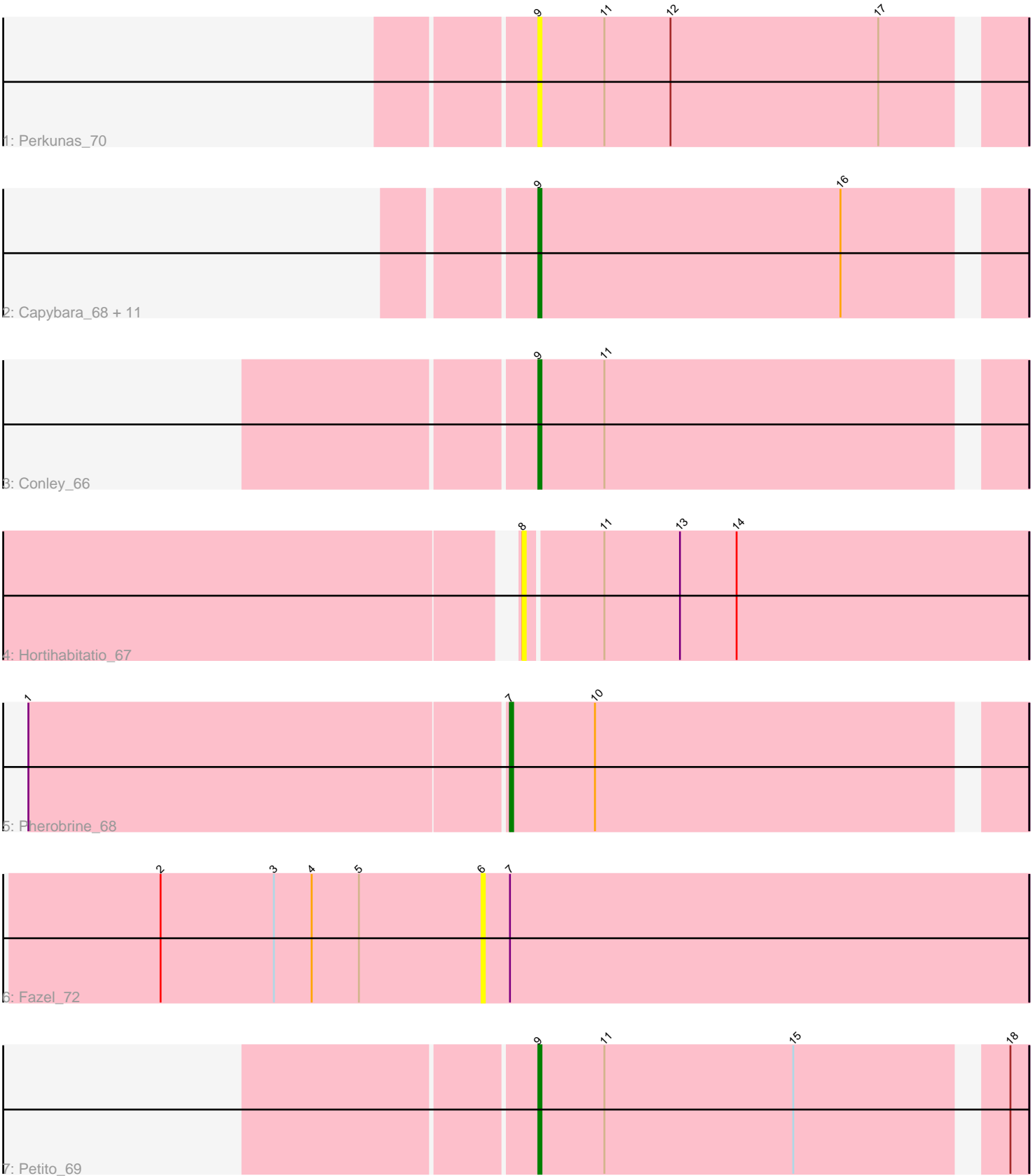


Pham 163964



Note: Tracks are now grouped by subcluster and scaled. Switching in subcluster is indicated by changes in track color. Track scale is now set by default to display the region 30 bp upstream of start 1 to 30 bp downstream of the last possible start. If this default region is judged to be packed too tightly with annotated starts, the track will be further scaled to only show that region of the ORF with annotated starts. This action will be indicated by adding "Zoomed" to the title. For starts, yellow indicates the location of called starts comprised solely of Glimmer/GeneMark auto-annotations, green indicates the location of called starts with at least 1 manual gene annotation.

Pham 163964 Report

This analysis was run 05/04/24 on database version 560.

Pham number 163964 has 18 members, 6 are drafts.

Phages represented in each track:

- Track 1 : Perkunas_70
- Track 2 : Capybara_68, Artorias_67, Roney_67, Gravy_66, Gill_67, Tanis_67, Kerry_66, Magel_68, Avazak_68, FortCran_71, Captrips_68, Odesza_66
- Track 3 : Conley_66
- Track 4 : Hortihabitatio_67
- Track 5 : Pherobrine_68
- Track 6 : Fazel_72
- Track 7 : Petit_69

Summary of Final Annotations (See graph section above for start numbers):

The start number called the most often in the published annotations is 9, it was called in 11 of the 12 non-draft genes in the pham.

Genes that call this "Most Annotated" start:

- Artorias_67, Avazak_68, Captrips_68, Capybara_68, Conley_66, FortCran_71, Gill_67, Gravy_66, Kerry_66, Magel_68, Odesza_66, Perkunas_70, Petit_69, Roney_67, Tanis_67,

Genes that have the "Most Annotated" start but do not call it:

-

Genes that do not have the "Most Annotated" start:

- Fazel_72, Hortihabitatio_67, Pherobrine_68,

Summary by start number:

Start 6:

- Found in 1 of 18 (5.6%) of genes in pham
- No Manual Annotations of this start.
- Called 100.0% of time when present
- Phage (with cluster) where this start called: Fazel_72 (DJ),

Start 7:

- Found in 2 of 18 (11.1%) of genes in pham
- Manual Annotations of this start: 1 of 12
- Called 50.0% of time when present
- Phage (with cluster) where this start called: Pherobrine_68 (DJ),

Start 8:

- Found in 1 of 18 (5.6%) of genes in pham
- No Manual Annotations of this start.
- Called 100.0% of time when present
- Phage (with cluster) where this start called: Hortihabitatio_67 (DJ),

Start 9:

- Found in 15 of 18 (83.3%) of genes in pham
- Manual Annotations of this start: 11 of 12
- Called 100.0% of time when present
- Phage (with cluster) where this start called: Artorias_67 (DJ), Avazak_68 (DJ), Captrips_68 (DJ), Capybara_68 (DJ), Conley_66 (DJ), FortCran_71 (DJ), Gill_67 (DJ), Gravy_66 (DJ), Kerry_66 (DJ), Magel_68 (DJ), Odesza_66 (DJ), Perkunas_70 (DJ), Petite_69 (DJ), Roney_67 (DJ), Tanis_67 (DJ),

Summary by clusters:

There is one cluster represented in this pham: DJ

Info for manual annotations of cluster DJ:

- Start number 7 was manually annotated 1 time for cluster DJ.
- Start number 9 was manually annotated 11 times for cluster DJ.

Gene Information:

Gene: Artorias_67 Start: 47313, Stop: 47459, Start Num: 9

Candidate Starts for Artorias_67:

(Start: 9 @47313 has 11 MA's), (16, 47409),

Gene: Avazak_68 Start: 47640, Stop: 47786, Start Num: 9

Candidate Starts for Avazak_68:

(Start: 9 @47640 has 11 MA's), (16, 47736),

Gene: Captrips_68 Start: 46788, Stop: 46934, Start Num: 9

Candidate Starts for Captrips_68:

(Start: 9 @46788 has 11 MA's), (16, 46884),

Gene: Capybara_68 Start: 47119, Stop: 47265, Start Num: 9

Candidate Starts for Capybara_68:

(Start: 9 @47119 has 11 MA's), (16, 47215),

Gene: Conley_66 Start: 47893, Stop: 48039, Start Num: 9

Candidate Starts for Conley_66:

(Start: 9 @47893 has 11 MA's), (11, 47914),

Gene: Fazel_72 Start: 47378, Stop: 47551, Start Num: 6

Candidate Starts for Fazel_72:

(2, 47276), (3, 47312), (4, 47324), (5, 47339), (6, 47378), (Start: 7 @47387 has 1 MA's),

Gene: FortCran_71 Start: 47313, Stop: 47459, Start Num: 9

Candidate Starts for FortCran_71:

(Start: 9 @47313 has 11 MA's), (16, 47409),

Gene: Gill_67 Start: 47131, Stop: 47277, Start Num: 9

Candidate Starts for Gill_67:

(Start: 9 @47131 has 11 MA's), (16, 47227),

Gene: Gravy_66 Start: 46809, Stop: 46955, Start Num: 9

Candidate Starts for Gravy_66:

(Start: 9 @46809 has 11 MA's), (16, 46905),

Gene: Hortihabitatio_67 Start: 47777, Stop: 47935, Start Num: 8

Candidate Starts for Hortihabitatio_67:

(8, 47777), (11, 47801), (13, 47825), (14, 47843),

Gene: Kerry_66 Start: 46809, Stop: 46955, Start Num: 9

Candidate Starts for Kerry_66:

(Start: 9 @46809 has 11 MA's), (16, 46905),

Gene: Magel_68 Start: 47046, Stop: 47192, Start Num: 9

Candidate Starts for Magel_68:

(Start: 9 @47046 has 11 MA's), (16, 47142),

Gene: Odesza_66 Start: 46990, Stop: 47136, Start Num: 9

Candidate Starts for Odesza_66:

(Start: 9 @46990 has 11 MA's), (16, 47086),

Gene: Perkunas_70 Start: 47394, Stop: 47540, Start Num: 9

Candidate Starts for Perkunas_70:

(Start: 9 @47394 has 11 MA's), (11, 47415), (12, 47436), (17, 47502),

Gene: Petito_69 Start: 48564, Stop: 48710, Start Num: 9

Candidate Starts for Petito_69:

(Start: 9 @48564 has 11 MA's), (11, 48585), (15, 48645), (18, 48705),

Gene: Pherobrine_68 Start: 48600, Stop: 48755, Start Num: 7

Candidate Starts for Pherobrine_68:

(1, 48450), (Start: 7 @48600 has 1 MA's), (10, 48627),

Gene: Roney_67 Start: 47156, Stop: 47302, Start Num: 9

Candidate Starts for Roney_67:

(Start: 9 @47156 has 11 MA's), (16, 47252),

Gene: Tanis_67 Start: 46976, Stop: 47122, Start Num: 9

Candidate Starts for Tanis_67:

(Start: 9 @46976 has 11 MA's), (16, 47072),