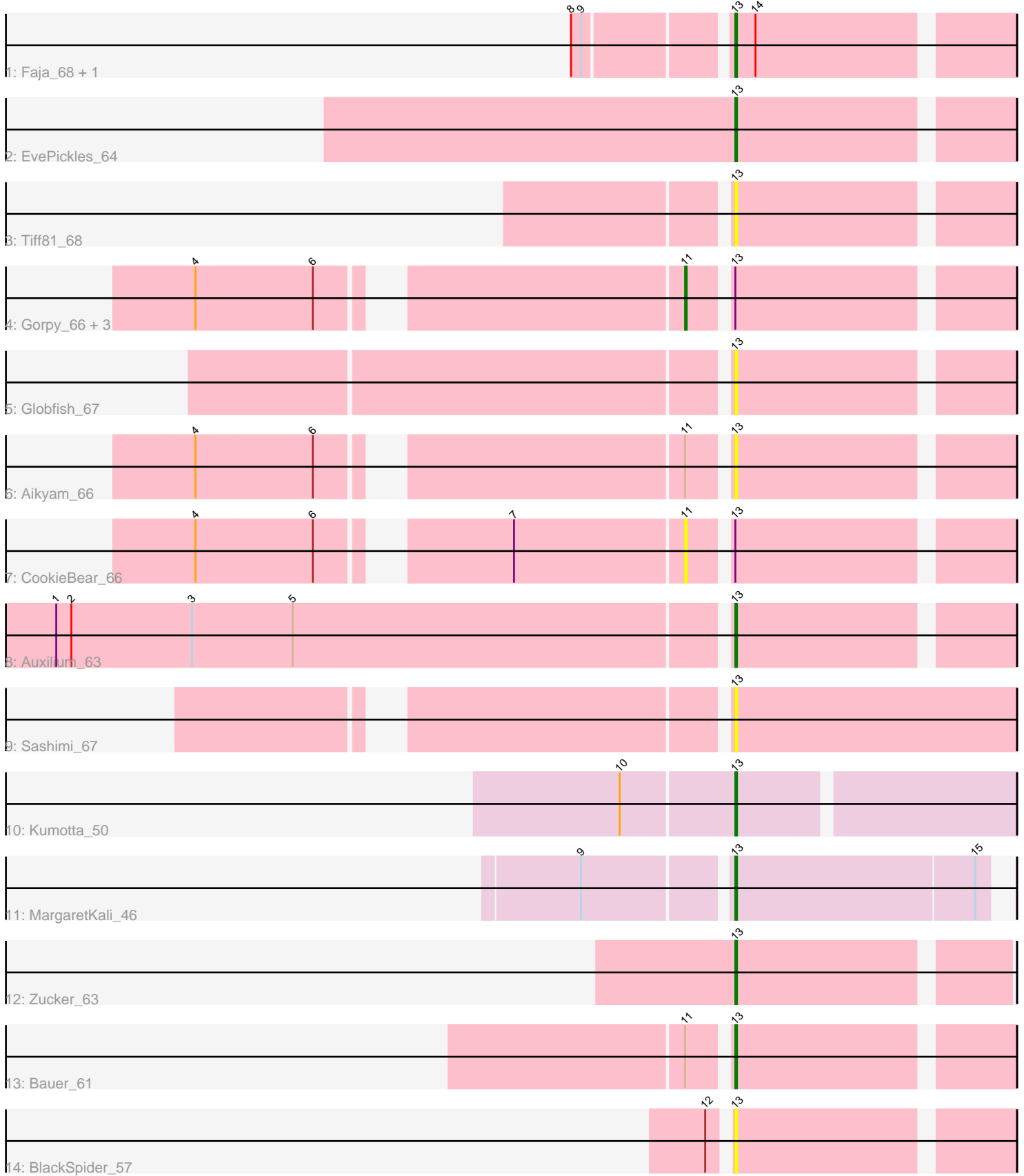


Pham 163967



Note: Tracks are now grouped by subcluster and scaled. Switching in subcluster is indicated by changes in track color. Track scale is now set by default to display the region 30 bp upstream of start 1 to 30 bp downstream of the last possible start. If this default region is judged to be packed too tightly with annotated starts, the track will be further scaled to only show that region of the ORF with annotated starts. This action will be indicated by adding "Zoomed" to the title. For starts, yellow indicates the location of called starts comprised solely of Glimmer/GeneMark auto-annotations, green indicates the location of called starts with at least 1 manual gene annotation.

Pham 163967 Report

This analysis was run 04/28/24 on database version 559.

Pham number 163967 has 18 members, 8 are drafts.

Phages represented in each track:

- Track 1 : Faja_68, Phrank15_70
- Track 2 : EvePickles_64
- Track 3 : Tiff81_68
- Track 4 : Gorpy_66, YoungHarleezy_66, Isolde_65, Sakai_65
- Track 5 : Globfish_67
- Track 6 : Aikyam_66
- Track 7 : CookieBear_66
- Track 8 : Auxilium_63
- Track 9 : Sashimi_67
- Track 10 : Kumotta_50
- Track 11 : MargaretKali_46
- Track 12 : Zucker_63
- Track 13 : Bauer_61
- Track 14 : BlackSpider_57

Summary of Final Annotations (See graph section above for start numbers):

The start number called the most often in the published annotations is 13, it was called in 7 of the 10 non-draft genes in the pham.

Genes that call this "Most Annotated" start:

- Aikyam_66, Auxilium_63, Bauer_61, BlackSpider_57, EvePickles_64, Faja_68, Globfish_67, Kumotta_50, MargaretKali_46, Phrank15_70, Sashimi_67, Tiff81_68, Zucker_63,

Genes that have the "Most Annotated" start but do not call it:

- CookieBear_66, Gorpy_66, Isolde_65, Sakai_65, YoungHarleezy_66,

Genes that do not have the "Most Annotated" start:

-

Summary by start number:

Start 11:

- Found in 7 of 18 (38.9%) of genes in pham
- Manual Annotations of this start: 3 of 10
- Called 71.4% of time when present
- Phage (with cluster) where this start called: CookieBear_66 (AY), Gorpy_66 (AY), Isolde_65 (AY), Sakai_65 (AY), YoungHarleezy_66 (AY),

Start 13:

- Found in 18 of 18 (100.0%) of genes in pham
- Manual Annotations of this start: 7 of 10
- Called 72.2% of time when present
- Phage (with cluster) where this start called: Aikyam_66 (AY), Auxilium_63 (AY), Bauer_61 (FN), BlackSpider_57 (FN), EvePickles_64 (AY), Faja_68 (AY), Globfish_67 (AY), Kumotta_50 (FB), MargaretKali_46 (FB), Phrank15_70 (AY), Sashimi_67 (AY), Tiff81_68 (AY), Zucker_63 (FN),

Summary by clusters:

There are 3 clusters represented in this pham: AY, FB, FN,

Info for manual annotations of cluster AY:

- Start number 11 was manually annotated 3 times for cluster AY.
- Start number 13 was manually annotated 3 times for cluster AY.

Info for manual annotations of cluster FB:

- Start number 13 was manually annotated 2 times for cluster FB.

Info for manual annotations of cluster FN:

- Start number 13 was manually annotated 2 times for cluster FN.

Gene Information:

Gene: Aikyam_66 Start: 33983, Stop: 34138, Start Num: 13

Candidate Starts for Aikyam_66:

(4, 33704), (6, 33773), (Start: 11 @33962 has 3 MA's), (Start: 13 @33983 has 7 MA's),

Gene: Auxilium_63 Start: 33144, Stop: 33299, Start Num: 13

Candidate Starts for Auxilium_63:

(1, 32751), (2, 32760), (3, 32832), (5, 32892), (Start: 13 @33144 has 7 MA's),

Gene: Bauer_61 Start: 34076, Stop: 34231, Start Num: 13

Candidate Starts for Bauer_61:

(Start: 11 @34055 has 3 MA's), (Start: 13 @34076 has 7 MA's),

Gene: BlackSpider_57 Start: 32936, Stop: 33091, Start Num: 13

Candidate Starts for BlackSpider_57:

(12, 32927), (Start: 13 @32936 has 7 MA's),

Gene: CookieBear_66 Start: 35393, Stop: 35569, Start Num: 11

Candidate Starts for CookieBear_66:

(4, 35135), (6, 35204), (7, 35294), (Start: 11 @35393 has 3 MA's), (Start: 13 @35414 has 7 MA's),

Gene: EvePickles_64 Start: 36114, Stop: 36269, Start Num: 13
Candidate Starts for EvePickles_64:
(Start: 13 @36114 has 7 MA's),

Gene: Faja_68 Start: 36966, Stop: 37121, Start Num: 13
Candidate Starts for Faja_68:
(8, 36882), (9, 36888), (Start: 13 @36966 has 7 MA's), (14, 36978),

Gene: Globfish_67 Start: 36057, Stop: 36212, Start Num: 13
Candidate Starts for Globfish_67:
(Start: 13 @36057 has 7 MA's),

Gene: Gorpy_66 Start: 36385, Stop: 36561, Start Num: 11
Candidate Starts for Gorpy_66:
(4, 36127), (6, 36196), (Start: 11 @36385 has 3 MA's), (Start: 13 @36406 has 7 MA's),

Gene: Isolde_65 Start: 35062, Stop: 35238, Start Num: 11
Candidate Starts for Isolde_65:
(4, 34804), (6, 34873), (Start: 11 @35062 has 3 MA's), (Start: 13 @35083 has 7 MA's),

Gene: Kumotta_50 Start: 30103, Stop: 30261, Start Num: 13
Candidate Starts for Kumotta_50:
(10, 30037), (Start: 13 @30103 has 7 MA's),

Gene: MargaretKali_46 Start: 28714, Stop: 28863, Start Num: 13
Candidate Starts for MargaretKali_46:
(9, 28633), (Start: 13 @28714 has 7 MA's), (15, 28855),

Gene: Phrank15_70 Start: 35883, Stop: 36047, Start Num: 13
Candidate Starts for Phrank15_70:
(8, 35799), (9, 35805), (Start: 13 @35883 has 7 MA's), (14, 35895),

Gene: Sakai_65 Start: 35096, Stop: 35272, Start Num: 11
Candidate Starts for Sakai_65:
(4, 34838), (6, 34907), (Start: 11 @35096 has 3 MA's), (Start: 13 @35117 has 7 MA's),

Gene: Sashimi_67 Start: 36369, Stop: 36536, Start Num: 13
Candidate Starts for Sashimi_67:
(Start: 13 @36369 has 7 MA's),

Gene: Tiff81_68 Start: 34064, Stop: 34219, Start Num: 13
Candidate Starts for Tiff81_68:
(Start: 13 @34064 has 7 MA's),

Gene: YoungHarleezy_66 Start: 35791, Stop: 35967, Start Num: 11
Candidate Starts for YoungHarleezy_66:
(4, 35533), (6, 35602), (Start: 11 @35791 has 3 MA's), (Start: 13 @35812 has 7 MA's),

Gene: Zucker_63 Start: 36020, Stop: 36172, Start Num: 13
Candidate Starts for Zucker_63:
(Start: 13 @36020 has 7 MA's),