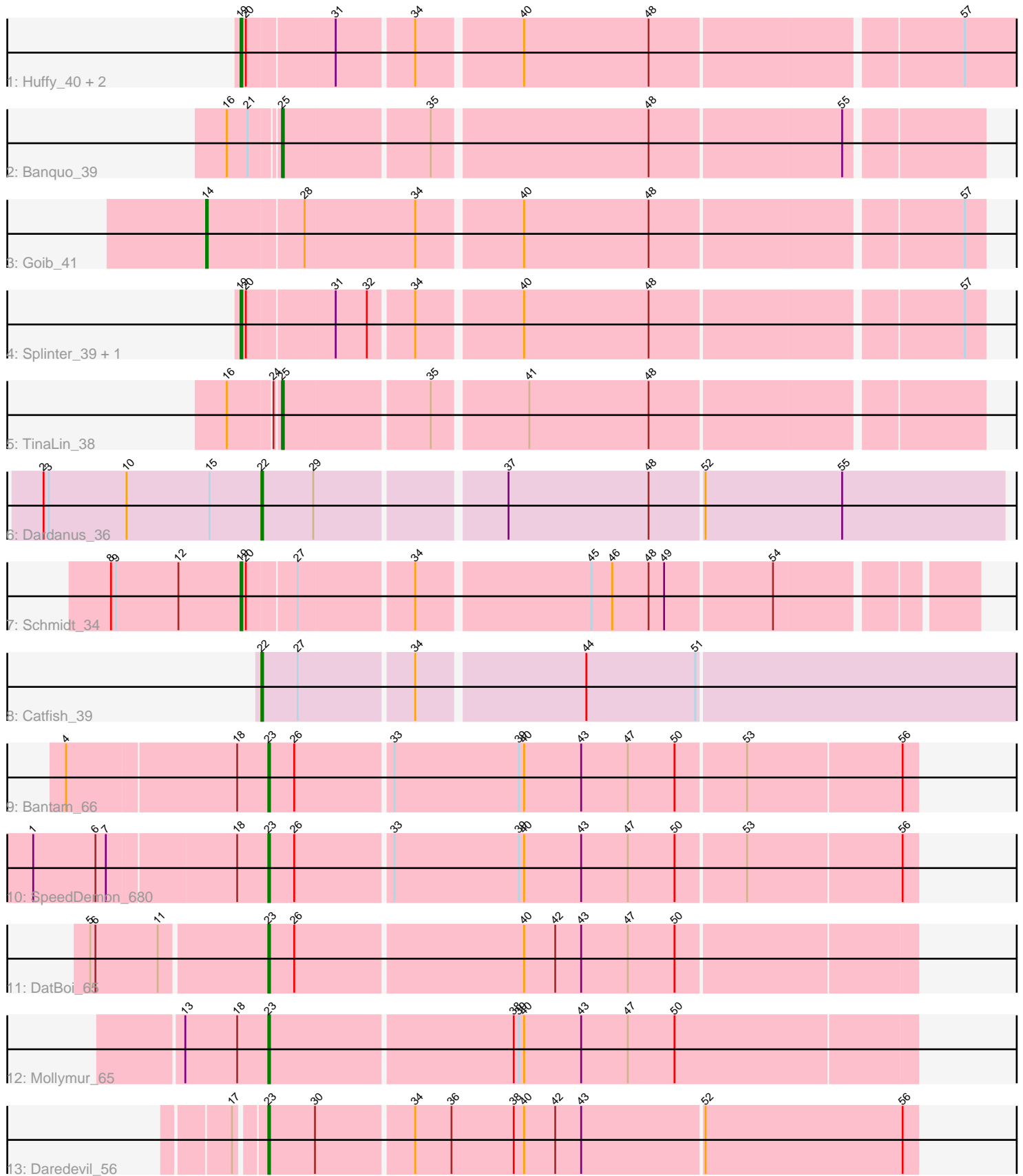


Pham 163999



Note: Tracks are now grouped by subcluster and scaled. Switching in subcluster is indicated by changes in track color. Track scale is now set by default to display the region 30 bp upstream of start 1 to 30 bp downstream of the last possible start. If this default region is judged to be packed too tightly with annotated starts, the track will be further scaled to only show that region of the ORF with annotated starts. This action will be indicated by adding "Zoomed" to the title. For starts, yellow indicates the location of called starts comprised solely of Glimmer/GeneMark auto-annotations, green indicates the location of called starts with at least 1 manual gene annotation.

Pham 163999 Report

This analysis was run 05/04/24 on database version 560.

Pham number 163999 has 16 members, 0 are drafts.

Phages represented in each track:

- Track 1 : Huff_40, TZGordon_41, DinoDaryn_40
- Track 2 : Banquo_39
- Track 3 : Goib_41
- Track 4 : Splinter_39, Vendetta_39
- Track 5 : TinaLin_38
- Track 6 : Dardanus_36
- Track 7 : Schmidt_34
- Track 8 : Catfish_39
- Track 9 : Bantam_66
- Track 10 : SpeedDemon_680
- Track 11 : DatBoi_65
- Track 12 : Mollymur_65
- Track 13 : Daredevil_56

Summary of Final Annotations (See graph section above for start numbers):

The start number called the most often in the published annotations is 19, it was called in 6 of the 16 non-draft genes in the pham.

Genes that call this "Most Annotated" start:

- DinoDaryn_40, Huff_40, Schmidt_34, Splinter_39, TZGordon_41, Vendetta_39,

Genes that have the "Most Annotated" start but do not call it:

-

Genes that do not have the "Most Annotated" start:

- Banquo_39, Bantam_66, Catfish_39, Dardanus_36, Daredevil_56, DatBoi_65, Goib_41, Mollymur_65, SpeedDemon_680, TinaLin_38,

Summary by start number:

Start 14:

- Found in 1 of 16 (6.2%) of genes in pham
- Manual Annotations of this start: 1 of 16

- Called 100.0% of time when present
- Phage (with cluster) where this start called: Goib_41 (CU1),

Start 19:

- Found in 6 of 16 (37.5%) of genes in pham
- Manual Annotations of this start: 6 of 16
- Called 100.0% of time when present
- Phage (with cluster) where this start called: DinoDaryn_40 (CU1), Huffy_40 (CU1), Schmidt_34 (CU4), Splinter_39 (CU1), TZGordon_41 (CU1), Vendetta_39 (CU1),

Start 22:

- Found in 2 of 16 (12.5%) of genes in pham
- Manual Annotations of this start: 2 of 16
- Called 100.0% of time when present
- Phage (with cluster) where this start called: Catfish_39 (CU5), Dardanus_36 (CU3),

Start 23:

- Found in 5 of 16 (31.2%) of genes in pham
- Manual Annotations of this start: 5 of 16
- Called 100.0% of time when present
- Phage (with cluster) where this start called: Bantam_66 (DL), Daredevil_56 (DL), DatBoi_65 (DL), Mollymur_65 (DL), SpeedDemon_680 (DL),

Start 25:

- Found in 2 of 16 (12.5%) of genes in pham
- Manual Annotations of this start: 2 of 16
- Called 100.0% of time when present
- Phage (with cluster) where this start called: Banquo_39 (CU1), TinaLin_38 (CU1),

Summary by clusters:

There are 5 clusters represented in this pham: CU5, CU4, CU3, DL, CU1,

Info for manual annotations of cluster CU1:

- Start number 14 was manually annotated 1 time for cluster CU1.
- Start number 19 was manually annotated 5 times for cluster CU1.
- Start number 25 was manually annotated 2 times for cluster CU1.

Info for manual annotations of cluster CU3:

- Start number 22 was manually annotated 1 time for cluster CU3.

Info for manual annotations of cluster CU4:

- Start number 19 was manually annotated 1 time for cluster CU4.

Info for manual annotations of cluster CU5:

- Start number 22 was manually annotated 1 time for cluster CU5.

Info for manual annotations of cluster DL:

- Start number 23 was manually annotated 5 times for cluster DL.

Gene Information:

Gene: Banquo_39 Start: 28265, Stop: 27882, Start Num: 25

Candidate Starts for Banquo_39:

(16, 28292), (21, 28280), (Start: 25 @28265 has 2 MA's), (35, 28184), (48, 28064), (55, 27956),

Gene: Bantam_66 Start: 49725, Stop: 49360, Start Num: 23

Candidate Starts for Bantam_66:

(4, 49839), (18, 49743), (Start: 23 @49725 has 5 MA's), (26, 49710), (33, 49656), (39, 49584), (40, 49581), (43, 49548), (47, 49521), (50, 49494), (53, 49455), (56, 49368),

Gene: Catfish_39 Start: 29601, Stop: 29161, Start Num: 22

Candidate Starts for Catfish_39:

(Start: 22 @29601 has 2 MA's), (27, 29580), (34, 29517), (44, 29424), (51, 29361),

Gene: Dardanus_36 Start: 26552, Stop: 26139, Start Num: 22

Candidate Starts for Dardanus_36:

(2, 26678), (3, 26675), (10, 26630), (15, 26582), (Start: 22 @26552 has 2 MA's), (29, 26522), (37, 26420), (48, 26339), (52, 26309), (55, 26231),

Gene: Daredevil_56 Start: 45221, Stop: 44853, Start Num: 23

Candidate Starts for Daredevil_56:

(17, 45236), (Start: 23 @45221 has 5 MA's), (30, 45194), (34, 45140), (36, 45119), (38, 45083), (40, 45077), (42, 45059), (43, 45044), (52, 44975), (56, 44861),

Gene: DatBoi_65 Start: 49746, Stop: 49381, Start Num: 23

Candidate Starts for DatBoi_65:

(5, 49845), (6, 49842), (11, 49806), (Start: 23 @49746 has 5 MA's), (26, 49731), (40, 49602), (42, 49584), (43, 49569), (47, 49542), (50, 49515),

Gene: DinoDaryn_40 Start: 28489, Stop: 28061, Start Num: 19

Candidate Starts for DinoDaryn_40:

(Start: 19 @28489 has 6 MA's), (20, 28486), (31, 28438), (34, 28396), (40, 28339), (48, 28267), (57, 28096),

Gene: Goib_41 Start: 29185, Stop: 28757, Start Num: 14

Candidate Starts for Goib_41:

(Start: 14 @29185 has 1 MA's), (28, 29131), (34, 29068), (40, 29011), (48, 28939), (57, 28768),

Gene: Huffy_40 Start: 28489, Stop: 28061, Start Num: 19

Candidate Starts for Huffy_40:

(Start: 19 @28489 has 6 MA's), (20, 28486), (31, 28438), (34, 28396), (40, 28339), (48, 28267), (57, 28096),

Gene: Mollymur_65 Start: 50001, Stop: 49633, Start Num: 23

Candidate Starts for Mollymur_65:

(13, 50049), (18, 50019), (Start: 23 @50001 has 5 MA's), (38, 49863), (39, 49860), (40, 49857), (43, 49824), (47, 49797), (50, 49770),

Gene: Schmidt_34 Start: 25761, Stop: 25366, Start Num: 19

Candidate Starts for Schmidt_34:

(8, 25836), (9, 25833), (12, 25797), (Start: 19 @25761 has 6 MA's), (20, 25758), (27, 25731), (34, 25668), (45, 25572), (46, 25560), (48, 25539), (49, 25530), (54, 25470),

Gene: SpeedDemon_680 Start: 51957, Stop: 51592, Start Num: 23

Candidate Starts for SpeedDemon_680:

(1, 52089), (6, 52053), (7, 52047), (18, 51975), (Start: 23 @51957 has 5 MA's), (26, 51942), (33, 51888), (39, 51816), (40, 51813), (43, 51780), (47, 51753), (50, 51726), (53, 51687), (56, 51600),

Gene: Splinter_39 Start: 29090, Stop: 28686, Start Num: 19

Candidate Starts for Splinter_39:

(Start: 19 @29090 has 6 MA's), (20, 29087), (31, 29039), (32, 29021), (34, 28997), (40, 28940), (48, 28868), (57, 28697),

Gene: TZGordon_41 Start: 28404, Stop: 28000, Start Num: 19

Candidate Starts for TZGordon_41:

(Start: 19 @28404 has 6 MA's), (20, 28401), (31, 28353), (34, 28311), (40, 28254), (48, 28182), (57, 28011),

Gene: TinaLin_38 Start: 27938, Stop: 27555, Start Num: 25

Candidate Starts for TinaLin_38:

(16, 27965), (24, 27941), (Start: 25 @27938 has 2 MA's), (35, 27857), (41, 27806), (48, 27737),

Gene: Vendetta_39 Start: 29090, Stop: 28686, Start Num: 19

Candidate Starts for Vendetta_39:

(Start: 19 @29090 has 6 MA's), (20, 29087), (31, 29039), (32, 29021), (34, 28997), (40, 28940), (48, 28868), (57, 28697),