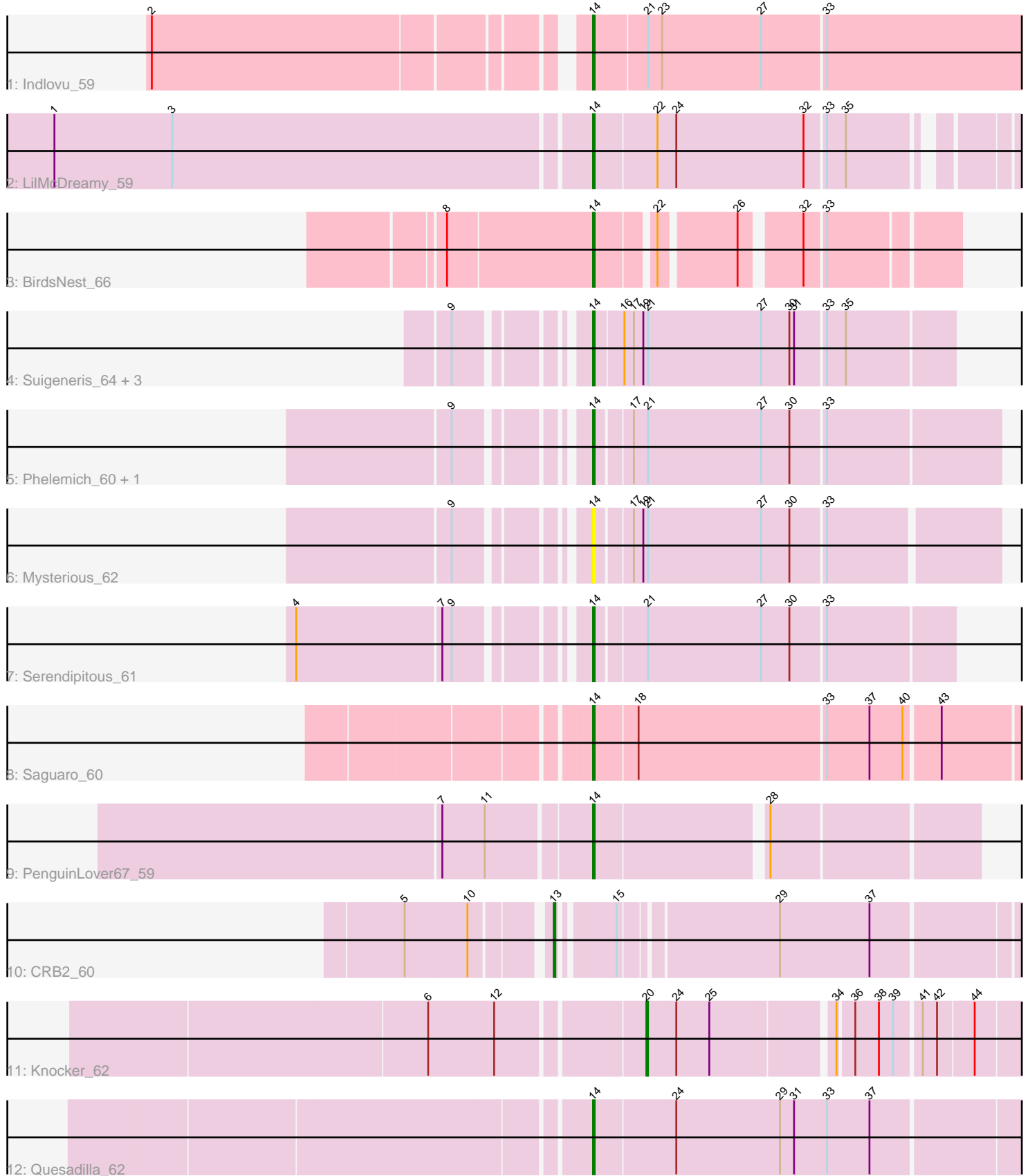


Pham 164001



Note: Tracks are now grouped by subcluster and scaled. Switching in subcluster is indicated by changes in track color. Track scale is now set by default to display the region 30 bp upstream of start 1 to 30 bp downstream of the last possible start. If this default region is judged to be packed too tightly with annotated starts, the track will be further scaled to only show that region of the ORF with annotated starts. This action will be indicated by adding "Zoomed" to the title. For starts, yellow indicates the location of called starts comprised solely of Glimmer/GeneMark auto-annotations, green indicates the location of called starts with at least 1 manual gene annotation.

Pham 164001 Report

This analysis was run 05/04/24 on database version 560.

Pham number 164001 has 16 members, 2 are drafts.

Phages represented in each track:

- Track 1 : Indlovu_59
- Track 2 : LilMcDreamy_59
- Track 3 : BirdsNest_66
- Track 4 : Suigeneris_64, SirJeffery_62, Acadian_63, Donny_64
- Track 5 : Phelemich_60, Reprobate_61
- Track 6 : Mysterious_62
- Track 7 : Serendipitous_61
- Track 8 : Saguaro_60
- Track 9 : PenguinLover67_59
- Track 10 : CRB2_60
- Track 11 : Knocker_62
- Track 12 : Quesadilla_62

Summary of Final Annotations (See graph section above for start numbers):

The start number called the most often in the published annotations is 14, it was called in 12 of the 14 non-draft genes in the pham.

Genes that call this "Most Annotated" start:

- Acadian_63, BirdsNest_66, Donny_64, Indlovu_59, LilMcDreamy_59, Mysterious_62, PenguinLover67_59, Phelemich_60, Quesadilla_62, Reprobate_61, Saguaro_60, Serendipitous_61, SirJeffery_62, Suigeneris_64,

Genes that have the "Most Annotated" start but do not call it:

-

Genes that do not have the "Most Annotated" start:

- CRB2_60, Knocker_62,

Summary by start number:

Start 13:

- Found in 1 of 16 (6.2%) of genes in pham
- Manual Annotations of this start: 1 of 14

- Called 100.0% of time when present
- Phage (with cluster) where this start called: CRB2_60 (B9),

Start 14:

- Found in 14 of 16 (87.5%) of genes in pham
- Manual Annotations of this start: 12 of 14
- Called 100.0% of time when present
- Phage (with cluster) where this start called: Acadian_63 (B5), BirdsNest_66 (B13), Donny_64 (B5), Indlovu_59 (B11), LilMcDreamy_59 (B12), Mysterious_62 (B5), PenguinLover67_59 (B9), Phelemich_60 (B5), Quesadilla_62 (B9), Reprobate_61 (B5), Saguaro_60 (B7), Serendipitous_61 (B5), SirJeffery_62 (B5), Suigeneris_64 (B5),

Start 20:

- Found in 1 of 16 (6.2%) of genes in pham
- Manual Annotations of this start: 1 of 14
- Called 100.0% of time when present
- Phage (with cluster) where this start called: Knocker_62 (B9),

Summary by clusters:

There are 6 clusters represented in this pham: B5, B7, B12, B13, B11, B9,

Info for manual annotations of cluster B11:

- Start number 14 was manually annotated 1 time for cluster B11.

Info for manual annotations of cluster B12:

- Start number 14 was manually annotated 1 time for cluster B12.

Info for manual annotations of cluster B13:

- Start number 14 was manually annotated 1 time for cluster B13.

Info for manual annotations of cluster B5:

- Start number 14 was manually annotated 6 times for cluster B5.

Info for manual annotations of cluster B7:

- Start number 14 was manually annotated 1 time for cluster B7.

Info for manual annotations of cluster B9:

- Start number 13 was manually annotated 1 time for cluster B9.
- Start number 14 was manually annotated 2 times for cluster B9.
- Start number 20 was manually annotated 1 time for cluster B9.

Gene Information:

Gene: Acadian_63 Start: 56338, Stop: 56117, Start Num: 14

Candidate Starts for Acadian_63:

(9, 56404), (Start: 14 @56338 has 12 MA's), (16, 56320), (17, 56314), (19, 56308), (21, 56305), (27, 56233), (30, 56215), (31, 56212), (33, 56194), (35, 56182),

Gene: BirdsNest_66 Start: 56050, Stop: 55850, Start Num: 14

Candidate Starts for BirdsNest_66:

(8, 56140), (Start: 14 @56050 has 12 MA's), (22, 56017), (26, 55972), (32, 55939), (33, 55927),

Gene: CRB2_60 Start: 56989, Stop: 56720, Start Num: 13

Candidate Starts for CRB2_60:

(5, 57070), (10, 57031), (Start: 13 @56989 has 1 MA's), (15, 56959), (29, 56866), (37, 56809),

Gene: Donny_64 Start: 56384, Stop: 56163, Start Num: 14

Candidate Starts for Donny_64:

(9, 56450), (Start: 14 @56384 has 12 MA's), (16, 56366), (17, 56360), (19, 56354), (21, 56351), (27, 56279), (30, 56261), (31, 56258), (33, 56240), (35, 56228),

Gene: Indlovu_59 Start: 55940, Stop: 55647, Start Num: 14

Candidate Starts for Indlovu_59:

(2, 56192), (Start: 14 @55940 has 12 MA's), (21, 55907), (23, 55898), (27, 55835), (33, 55796),

Gene: Klocker_62 Start: 57396, Stop: 57175, Start Num: 20

Candidate Starts for Klocker_62:

(6, 57525), (12, 57483), (Start: 20 @57396 has 1 MA's), (24, 57378), (25, 57357), (34, 57285), (36, 57276), (38, 57261), (39, 57252), (41, 57237), (42, 57228), (44, 57207),

Gene: LilMcDreamy_59 Start: 55604, Stop: 55359, Start Num: 14

Candidate Starts for LilMcDreamy_59:

(1, 55937), (3, 55862), (Start: 14 @55604 has 12 MA's), (22, 55565), (24, 55553), (32, 55472), (33, 55460), (35, 55448),

Gene: Mysterious_62 Start: 56228, Stop: 55983, Start Num: 14

Candidate Starts for Mysterious_62:

(9, 56294), (Start: 14 @56228 has 12 MA's), (17, 56207), (19, 56201), (21, 56198), (27, 56126), (30, 56108), (33, 56087),

Gene: PenguinLover67_59 Start: 55991, Stop: 55764, Start Num: 14

Candidate Starts for PenguinLover67_59:

(7, 56081), (11, 56054), (Start: 14 @55991 has 12 MA's), (28, 55889),

Gene: Phelemich_60 Start: 56226, Stop: 55978, Start Num: 14

Candidate Starts for Phelemich_60:

(9, 56292), (Start: 14 @56226 has 12 MA's), (17, 56205), (21, 56196), (27, 56124), (30, 56106), (33, 56085),

Gene: Quesadilla_62 Start: 56441, Stop: 56175, Start Num: 14

Candidate Starts for Quesadilla_62:

(Start: 14 @56441 has 12 MA's), (24, 56390), (29, 56324), (31, 56315), (33, 56294), (37, 56267),

Gene: Reprobate_61 Start: 56231, Stop: 55983, Start Num: 14

Candidate Starts for Reprobate_61:

(9, 56297), (Start: 14 @56231 has 12 MA's), (17, 56210), (21, 56201), (27, 56129), (30, 56111), (33, 56090),

Gene: Saguaro_60 Start: 55761, Stop: 55492, Start Num: 14

Candidate Starts for Saguaro_60:

(Start: 14 @55761 has 12 MA's), (18, 55734), (33, 55617), (37, 55590), (40, 55569), (43, 55548),

Gene: Serendipitous_61 Start: 55769, Stop: 55551, Start Num: 14

Candidate Starts for Serendipitous_61:

(4, 55931), (7, 55841), (9, 55835), (Start: 14 @55769 has 12 MA's), (21, 55739), (27, 55667), (30, 55649), (33, 55628),

Gene: SirJeffery_62 Start: 56415, Stop: 56194, Start Num: 14

Candidate Starts for SirJeffery_62:

(9, 56481), (Start: 14 @56415 has 12 MA's), (16, 56397), (17, 56391), (19, 56385), (21, 56382), (27, 56310), (30, 56292), (31, 56289), (33, 56271), (35, 56259),

Gene: Suigeneris_64 Start: 56533, Stop: 56312, Start Num: 14

Candidate Starts for Suigeneris_64:

(9, 56599), (Start: 14 @56533 has 12 MA's), (16, 56515), (17, 56509), (19, 56503), (21, 56500), (27, 56428), (30, 56410), (31, 56407), (33, 56389), (35, 56377),