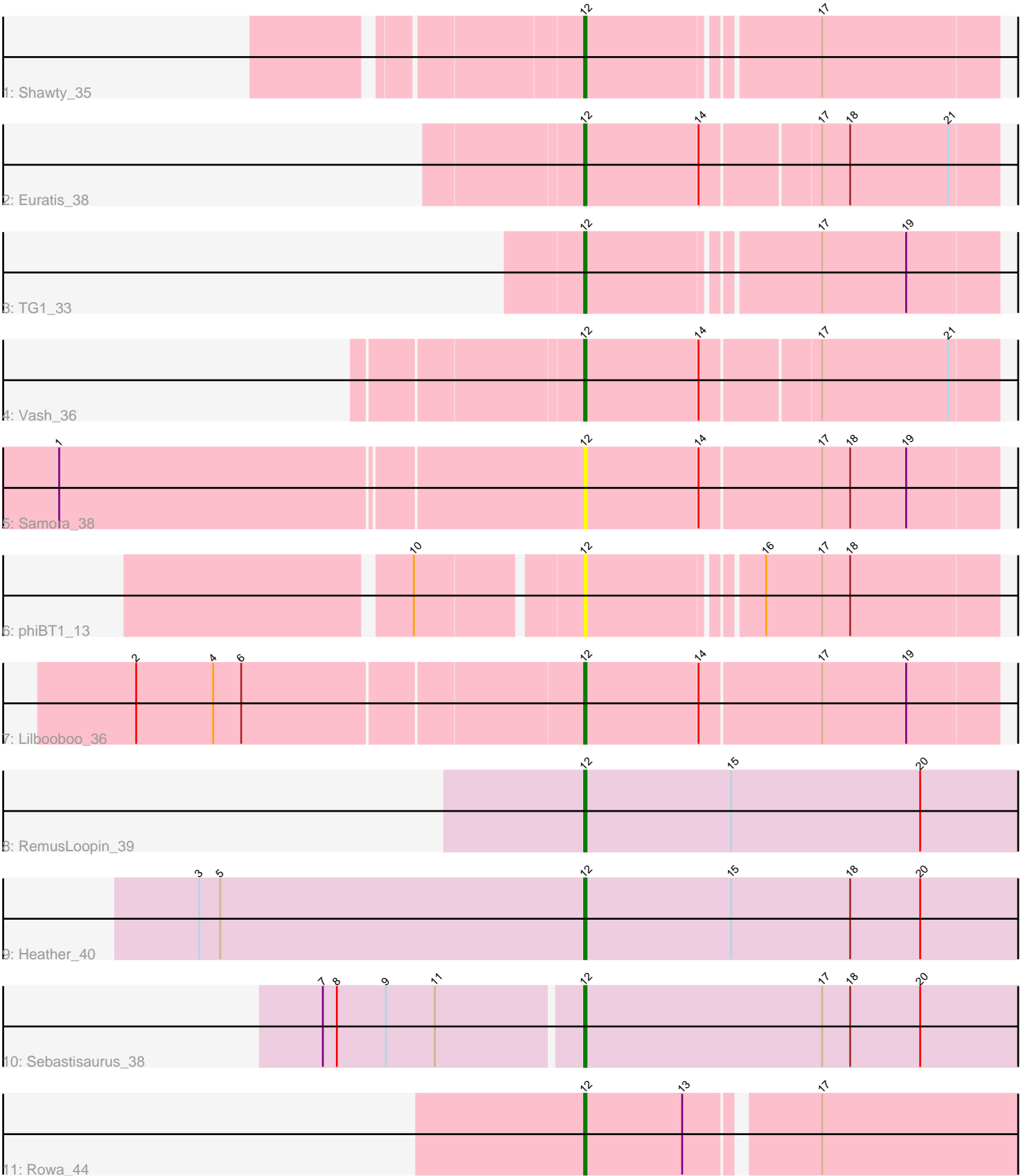


Pham 164066



Note: Tracks are now grouped by subcluster and scaled. Switching in subcluster is indicated by changes in track color. Track scale is now set by default to display the region 30 bp upstream of start 1 to 30 bp downstream of the last possible start. If this default region is judged to be packed too tightly with annotated starts, the track will be further scaled to only show that region of the ORF with annotated starts. This action will be indicated by adding "Zoomed" to the title. For starts, yellow indicates the location of called starts comprised solely of Glimmer/GeneMark auto-annotations, green indicates the location of called starts with at least 1 manual gene annotation.

Pham 164066 Report

This analysis was run 05/04/24 on database version 560.

WARNING: Pham size does not match number of genes in report. Either unphamerated genes have been added (by you) or starterator has removed genes due to invalid start codon.

Pham number 164066 has 11 members, 2 are drafts.

Phages represented in each track:

- Track 1 : Shawty_35
- Track 2 : Euratis_38
- Track 3 : TG1_33
- Track 4 : Vash_36
- Track 5 : Samora_38
- Track 6 : phiBT1_13
- Track 7 : Lilbooboo_36
- Track 8 : RemusLoopin_39
- Track 9 : Heather_40
- Track 10 : Sebastisaurus_38
- Track 11 : Rowa_44

Summary of Final Annotations (See graph section above for start numbers):

The start number called the most often in the published annotations is 12, it was called in 9 of the 9 non-draft genes in the pham.

Genes that call this "Most Annotated" start:

- Euratis_38, Heather_40, Lilbooboo_36, RemusLoopin_39, Rowa_44, Samora_38, Sebastisaurus_38, Shawty_35, TG1_33, Vash_36, phiBT1_13,

Genes that have the "Most Annotated" start but do not call it:

-

Genes that do not have the "Most Annotated" start:

-

Summary by start number:

Start 12:

- Found in 11 of 11 (100.0%) of genes in pham
- Manual Annotations of this start: 9 of 9
- Called 100.0% of time when present
- Phage (with cluster) where this start called: Euratis_38 (BB1), Heather_40 (BB2), Lilbooboo_36 (BB1), RemusLoopin_39 (BB2), Rowa_44 (BL), Samora_38 (BB1), Sebastisaurus_38 (BB2), Shawty_35 (BB1), TG1_33 (BB1), Vash_36 (BB1), phiBT1_13 (BB1),

Summary by clusters:

There are 3 clusters represented in this pham: BL, BB2, BB1,

Info for manual annotations of cluster BB1:

- Start number 12 was manually annotated 5 times for cluster BB1.

Info for manual annotations of cluster BB2:

- Start number 12 was manually annotated 3 times for cluster BB2.

Info for manual annotations of cluster BL:

- Start number 12 was manually annotated 1 time for cluster BL.

Gene Information:

Gene: Euratis_38 Start: 30425, Stop: 30595, Start Num: 12

Candidate Starts for Euratis_38:

(Start: 12 @30425 has 9 MA's), (14, 30473), (17, 30521), (18, 30533), (21, 30575),

Gene: Heather_40 Start: 31685, Stop: 31888, Start Num: 12

Candidate Starts for Heather_40:

(3, 31520), (5, 31529), (Start: 12 @31685 has 9 MA's), (15, 31748), (18, 31799), (20, 31829),

Gene: Lilbooboo_36 Start: 30535, Stop: 30708, Start Num: 12

Candidate Starts for Lilbooboo_36:

(2, 30349), (4, 30382), (6, 30394), (Start: 12 @30535 has 9 MA's), (14, 30583), (17, 30634), (19, 30670),

Gene: RemusLoopin_39 Start: 31906, Stop: 32109, Start Num: 12

Candidate Starts for RemusLoopin_39:

(Start: 12 @31906 has 9 MA's), (15, 31969), (20, 32050),

Gene: Rowa_44 Start: 33314, Stop: 33493, Start Num: 12

Candidate Starts for Rowa_44:

(Start: 12 @33314 has 9 MA's), (13, 33356), (17, 33407),

Gene: Samora_38 Start: 31106, Stop: 31279, Start Num: 12

Candidate Starts for Samora_38:

(1, 30887), (Start: 12 @31106 has 9 MA's), (14, 31154), (17, 31205), (18, 31217), (19, 31241),

Gene: Sebastisaurus_38 Start: 31594, Stop: 31797, Start Num: 12

Candidate Starts for Sebastisaurus_38:

(7, 31486), (8, 31492), (9, 31513), (11, 31534), (Start: 12 @31594 has 9 MA's), (17, 31696), (18, 31708), (20, 31738),

Gene: Shawty_35 Start: 30307, Stop: 30474, Start Num: 12

Candidate Starts for Shawty_35:

(Start: 12 @30307 has 9 MA's), (17, 30400),

Gene: TG1_33 Start: 29448, Stop: 29615, Start Num: 12

Candidate Starts for TG1_33:

(Start: 12 @29448 has 9 MA's), (17, 29541), (19, 29577),

Gene: Vash_36 Start: 30357, Stop: 30527, Start Num: 12

Candidate Starts for Vash_36:

(Start: 12 @30357 has 9 MA's), (14, 30405), (17, 30453), (21, 30507),

Gene: phiBT1_13 Start: 31817, Stop: 31984, Start Num: 12

Candidate Starts for phiBT1_13:

(10, 31751), (Start: 12 @31817 has 9 MA's), (16, 31886), (17, 31910), (18, 31922),