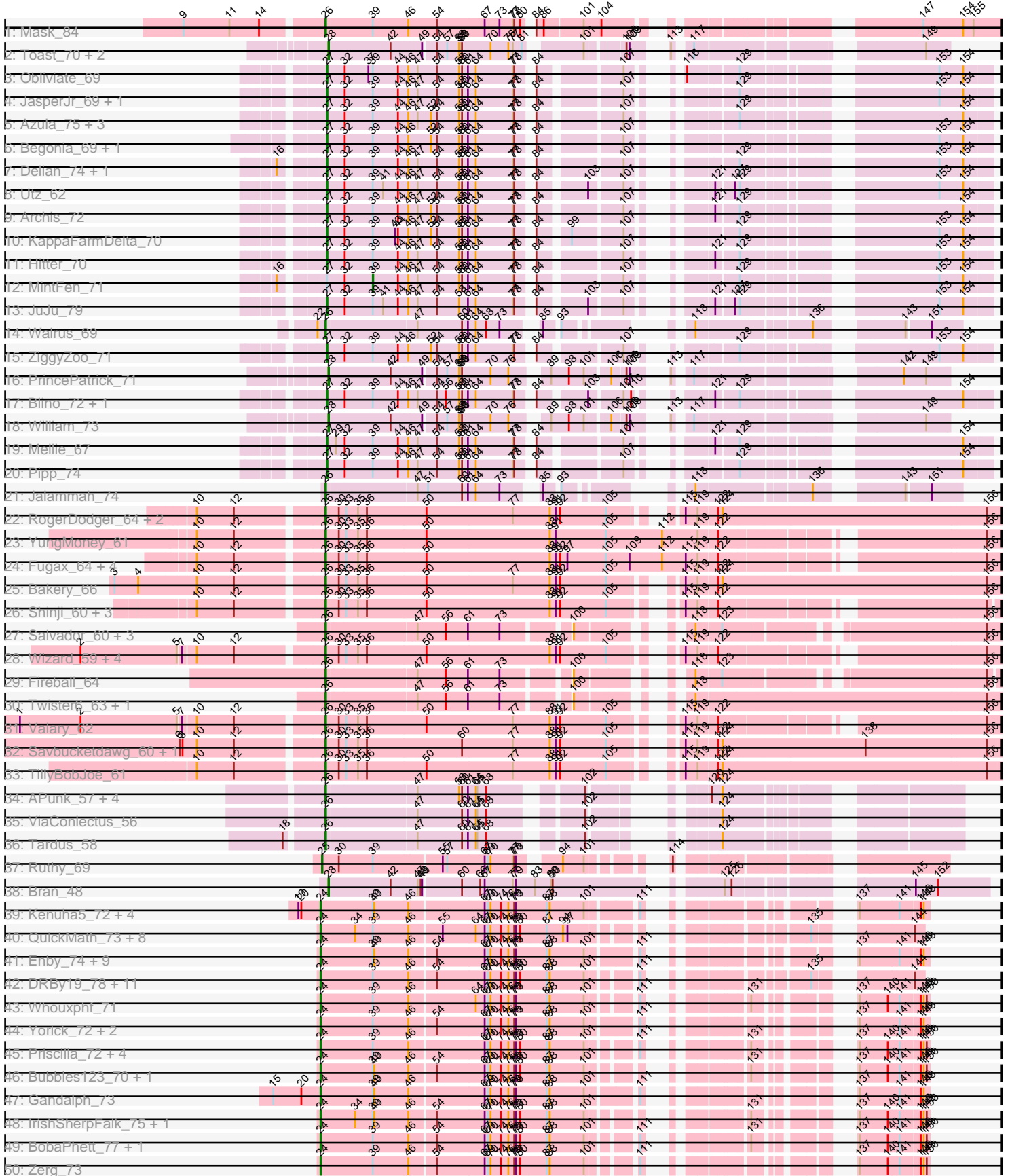
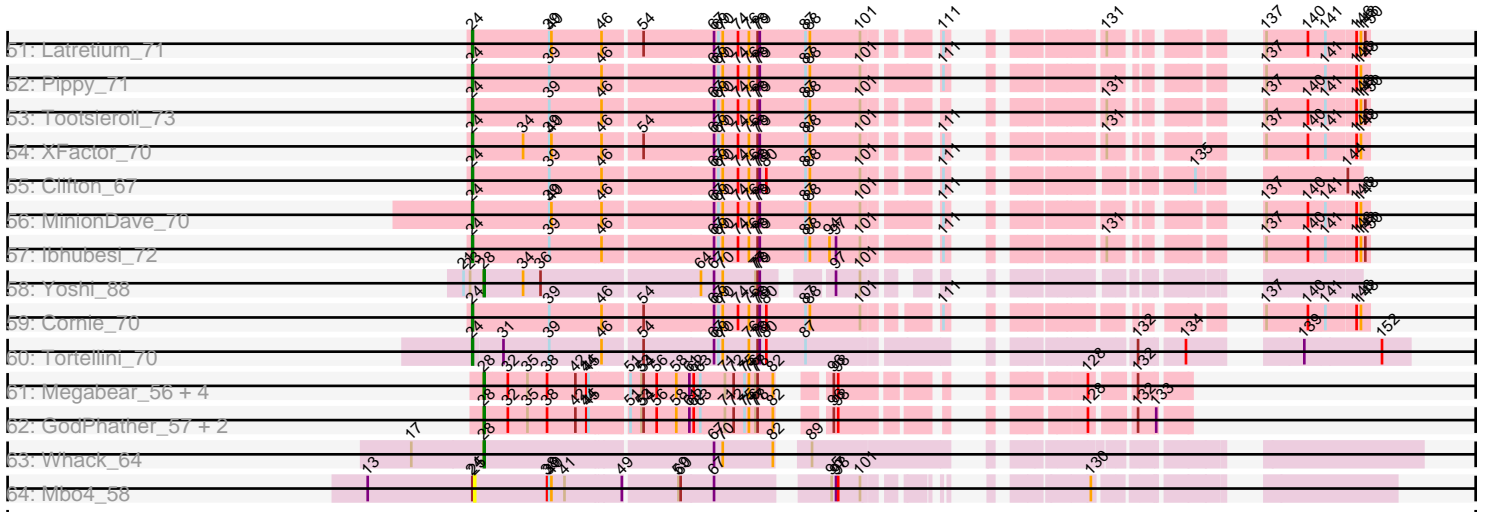


Pham 164899



Pham 164899



Note: Tracks are now grouped by subcluster and scaled. Switching in subcluster is indicated by changes in track color. Track scale is now set by default to display the region 30 bp upstream of start 1 to 30 bp downstream of the last possible start. If this default region is judged to be packed too tightly with annotated starts, the track will be further scaled to only show that region of the ORF with annotated starts. This action will be indicated by adding "Zoomed" to the title. For starts, yellow indicates the location of called starts comprised solely of Glimmer/GeneMark auto-annotations, green indicates the location of called starts with at least 1 manual gene annotation.

Pham 164899 Report

This analysis was run 07/09/24 on database version 566.

Pham number 164899 has 142 members, 9 are drafts.

Phages represented in each track:

- Track 1 : Mask_84
- Track 2 : Toast_70, Fairfaxidum_73, PCoral7_70
- Track 3 : Obliviate_69
- Track 4 : JasperJr_69, Guacamole_69
- Track 5 : Azula_75, Blueberry_74, MissRona_75, Gambino_77
- Track 6 : Begonia_69, Malachai_69
- Track 7 : Delian_74, CaptainKirk2_71
- Track 8 : Utz_62
- Track 9 : Archis_72
- Track 10 : KappaFarmDelta_70
- Track 11 : Hitter_70
- Track 12 : MintFen_71
- Track 13 : JuJu_79
- Track 14 : Walrus_69
- Track 15 : ZiggyZoo_71
- Track 16 : PrincePatrick_71
- Track 17 : Blino_72, CarolAnn_71
- Track 18 : William_73
- Track 19 : Mellie_67
- Track 20 : Pipp_74
- Track 21 : Jalammah_74
- Track 22 : RogerDodger_64, Danyall_62, PullumCavea_60
- Track 23 : YungMoney_61
- Track 24 : Fugax_64, Barb_63, PinkCoffee_63, ClamChowder_63, KimmyK_62
- Track 25 : Bakery_66
- Track 26 : Shinji_60, SmokingBunny_61, Togo_60, Mutzi_60
- Track 27 : Salvador_60, Evamon_60, Phlop_59, Nubi_61
- Track 28 : Wizard_59, Arri_62, VanDeWege_63, Gezellig_62, Halo3_60
- Track 29 : Fireball_64
- Track 30 : Twister6_63, Portcullis_63
- Track 31 : Valary_62
- Track 32 : Savbucketdawg_60, Jambalaya_60
- Track 33 : TillyBobJoe_61
- Track 34 : APunk_57, Sampson_56, Scioto_57, Natkenzie_56, Abblin_56
- Track 35 : ViaConlectus_56
- Track 36 : Tardus_58
- Track 37 : Ruthy_69

- Track 38 : Bran_48
- Track 39 : Kenuha5_72, DotProduct_71, Totinger_73, GigiOuiOui_69, SuperGrey_75
- Track 40 : QuickMath_73, Soul22_78, Kimberlium_74, IbOuu_72, Blarby_83, Zapner_83, Veteran_67, Firehouse51_71, Jabbawokkie_84
- Track 41 : Enby_74, DirtMcgirt_72, UncleRicky_72, Llij_69, Leozinho_74, Martik_76, Drago_70, Maravista_76, Lorde_73, Phatniss_70
- Track 42 : DRBy19_78, Lizziana_79, Saal_74, GUmbie_69, Spoonbill_72, Philus_77, James_75, Jarcob_74, Gorge_76, OlympiaSaint_74, Mattes_76, Zizzle_77
- Track 43 : Whouxphf_71
- Track 44 : Yorick_72, Burwell21_71, Blexus_71
- Track 45 : Priscilla_72, SwagPiggett_78, LastJedi_66, Koella_66, NormanBulbieJr_71
- Track 46 : Bubbles123_70, Byougenkin_73
- Track 47 : Gandalph_73
- Track 48 : IrishSherpFalk_75, WillSterrel_75
- Track 49 : BobaPhett_77, Brocalys_66
- Track 50 : Zerg_73
- Track 51 : Latretium_71
- Track 52 : Pippy_71
- Track 53 : Tootsieroll_73
- Track 54 : XFactor_70
- Track 55 : Clifton_67
- Track 56 : MinionDave_70
- Track 57 : Ibhubesi_72
- Track 58 : Yoshi_88
- Track 59 : Cornie_70
- Track 60 : Tortellini_70
- Track 61 : Megabear_56, Cepens_56, D12_55, Taptic_56, PR_56
- Track 62 : GodPhather_57, Jeon_56, Argie_57
- Track 63 : Whack_64
- Track 64 : Mbo4_58

Summary of Final Annotations (See graph section above for start numbers):

The start number called the most often in the published annotations is 24, it was called in 59 of the 133 non-draft genes in the pham.

Genes that call this "Most Annotated" start:

- Blarby_83, Blexus_71, BobaPhett_77, Brocalys_66, Bubbles123_70, Burwell21_71, Byougenkin_73, Clifton_67, Cornie_70, DRBy19_78, DirtMcgirt_72, DotProduct_71, Drago_70, Enby_74, Firehouse51_71, GUmbie_69, Gandalph_73, GigiOuiOui_69, Gorge_76, IbOuu_72, Ibhubesi_72, IrishSherpFalk_75, Jabbawokkie_84, James_75, Jarcob_74, Kenuha5_72, Kimberlium_74, Koella_66, LastJedi_66, Latretium_71, Leozinho_74, Lizziana_79, Llij_69, Lorde_73, Maravista_76, Martik_76, Mattes_76, MinionDave_70, NormanBulbieJr_71, OlympiaSaint_74, Phatniss_70, Philus_77, Pippy_71, Priscilla_72, QuickMath_73, Saal_74, Soul22_78, Spoonbill_72, SuperGrey_75, SwagPiggett_78, Tootsieroll_73, Tortellini_70, Totinger_73, UncleRicky_72, Veteran_67, Whouxphf_71, WillSterrel_75, XFactor_70, Yorick_72,

Zapner_83, Zerg_73, Zizzle_77,

Genes that have the "Most Annotated" start but do not call it:

- Mbo4_58,

Genes that do not have the "Most Annotated" start:

- APunk_57, Abblin_56, Archis_72, Argie_57, Arri_62, Azula_75, Bakery_66, Barb_63, Begonia_69, Blino_72, Blueberry_74, Bran_48, CaptainKirk2_71, CarolAnn_71, Cepens_56, ClamChowder_63, D12_55, Danyall_62, Delian_74, Evamon_60, Fairfaxidum_73, Fireball_64, Fugax_64, Gambino_77, Gezellig_62, GodPhather_57, Guacamole_69, Halo3_60, Hitter_70, Jalammah_74, Jambalaya_60, JasperJr_69, Jeon_56, JuJu_79, KappaFarmDelta_70, KimmyK_62, Malachai_69, Mask_84, Megabear_56, Mellie_67, MintFen_71, MissRona_75, Mutzi_60, Natkenzie_56, Nubi_61, Obliviate_69, PCoral7_70, PR_56, Phlop_59, PinkCoffee_63, Pipp_74, Portcullis_63, PrincePatrick_71, PullumCavea_60, RogerDodger_64, Ruthy_69, Salvador_60, Sampson_56, Savbucketdawg_60, Scioto_57, Shinji_60, SmokingBunny_61, Taptic_56, Tardus_58, TillyBobJoe_61, Toast_70, Togo_60, Twister6_63, Utz_62, Valary_62, VanDeWege_63, ViaConlectus_56, Walrus_69, Whack_64, William_73, Wizard_59, Yoshi_88, YungMoney_61, ZiggyZoo_71,

Summary by start number:

Start 24:

- Found in 63 of 142 (44.4%) of genes in pham
- Manual Annotations of this start: 59 of 133
- Called 98.4% of time when present
- Phage (with cluster) where this start called: Blarby_83 (F), Blexus_71 (F1), BobaPhett_77 (F1), Brocalys_66 (F1), Bubbles123_70 (F1), Burwell21_71 (F1), Byougenkin_73 (F1), Clifton_67 (F1), Cornie_70 (F5), DRBy19_78 (F1), DirtMcgirt_72 (F1), DotProduct_71 (F1), Drago_70 (F1), Enby_74 (F1), Firehouse51_71 (F1), GUmbie_69 (F1), Gandalph_73 (F1), GigiOuiOui_69 (F1), Gorge_76 (F1), IbOuu_72 (F1), Ibhubesi_72 (F1), IrishSherpFalk_75 (F1), Jabbawokkie_84 (F2), James_75 (F1), Jarcob_74 (F1), Kenuha5_72 (F1), Kimberlium_74 (F1), Koella_66 (F1), LastJedi_66 (F1), Latretium_71 (F1), Leozinho_74 (F1), Lizziana_79 (F1), Llij_69 (F1), Lorde_73 (F1), Maravista_76 (F1), Martik_76 (F1), Mattes_76 (F1), MinionDave_70 (F1), NormanBulbieJr_71 (F1), OlympiaSaint_74 (F1), Phatniss_70 (F1), Philus_77 (F1), Pippy_71 (F1), Priscilla_72 (F1), QuickMath_73 (F1), Saal_74 (F1), Soul22_78 (F2), Spoonbill_72 (F1), SuperGrey_75 (F1), SwagPigglett_78 (F1), Tootsieroll_73 (F1), Tortellini_70 (P2), Totinger_73 (F1), UncleRicky_72 (F1), Veteran_67 (F1), Whouxphf_71 (F1), WillSterrel_75 (F1), XFactor_70 (F1), Yorick_72 (F1), Zapner_83 (F2), Zerg_73 (F1), Zizzle_77 (F1),

Start 25:

- Found in 2 of 142 (1.4%) of genes in pham
- Manual Annotations of this start: 1 of 133
- Called 100.0% of time when present
- Phage (with cluster) where this start called: Mbo4_58 (singleton), Ruthy_69 (DW),

Start 26:

- Found in 40 of 142 (28.2%) of genes in pham
- Manual Annotations of this start: 35 of 133

- Called 100.0% of time when present
- Phage (with cluster) where this start called: APunk_57 (DE4), Abblin_56 (DE4), Arri_62 (DC1), Bakery_66 (DC1), Barb_63 (DC1), ClamChowder_63 (DC1), Danyall_62 (DC1), Evamon_60 (DC1), Fireball_64 (DC1), Fugax_64 (DC1), Gezellig_62 (DC1), Halo3_60 (DC1), Jalammah_74 (CV), Jambalaya_60 (DC1), KimmyK_62 (DC1), Mask_84 (AD), Mutzi_60 (DC1), Natkenzie_56 (DE4), Nubi_61 (DC1), Phlop_59 (DC1), PinkCoffee_63 (DC1), Portcullis_63 (DC1), PullumCavea_60 (DC1), RogerDodger_64 (DC1), Salvador_60 (DC1), Sampson_56 (DE4), Savbucketdawg_60 (DC1), Scioto_57 (DE4), Shinji_60 (DC1), SmokingBunny_61 (DC1), Tardus_58 (DE4), TillyBobJoe_61 (DC1), Togo_60 (DC1), Twister6_63 (DC1), Valary_62 (DC1), VanDeWege_63 (DC1), ViaConlectus_56 (DE4), Walrus_69 (CV), Wizard_59 (DC1), YungMoney_61 (DC1),

Start 27:

- Found in 22 of 142 (15.5%) of genes in pham
- Manual Annotations of this start: 21 of 133
- Called 95.5% of time when present
- Phage (with cluster) where this start called: Archis_72 (CV), Azula_75 (CV), Begonia_69 (CV), Blino_72 (CV), Blueberry_74 (CV), CaptainKirk2_71 (CV), CarolAnn_71 (CV), Delian_74 (CV), Gambino_77 (CV), Guacamole_69 (CV), Hitter_70 (CV), JasperJr_69 (CV), JuJu_79 (CV), KappaFarmDelta_70 (CV), Malachai_69 (CV), Mellie_67 (CV), MissRona_75 (CV), Oblivate_69 (CV), Pipp_74 (CV), Utz_62 (CV), ZiggyZoo_71 (CV),

Start 28:

- Found in 16 of 142 (11.3%) of genes in pham
- Manual Annotations of this start: 16 of 133
- Called 100.0% of time when present
- Phage (with cluster) where this start called: Argie_57 (W), Bran_48 (EP), Cepens_56 (W), D12_55 (W), Fairfaxidum_73 (CV), GodPhather_57 (W), Jeon_56 (W), Megabear_56 (W), PCoral7_70 (CV), PR_56 (W), PrincePatrick_71 (CV), Taptic_56 (W), Toast_70 (CV), Whack_64 (singleton), William_73 (CV), Yoshi_88 (F2),

Start 39:

- Found in 87 of 142 (61.3%) of genes in pham
- Manual Annotations of this start: 1 of 133
- Called 1.1% of time when present
- Phage (with cluster) where this start called: MintFen_71 (CV),

Summary by clusters:

There are 13 clusters represented in this pham: P2, F1, F2, AD, F5, F, DE4, singleton, EP, W, DW, CV, DC1,

Info for manual annotations of cluster AD:

- Start number 26 was manually annotated 1 time for cluster AD.

Info for manual annotations of cluster CV:

- Start number 26 was manually annotated 2 times for cluster CV.
- Start number 27 was manually annotated 21 times for cluster CV.
- Start number 28 was manually annotated 5 times for cluster CV.
- Start number 39 was manually annotated 1 time for cluster CV.

Info for manual annotations of cluster DC1:

- Start number 26 was manually annotated 28 times for cluster DC1.

Info for manual annotations of cluster DE4:

- Start number 26 was manually annotated 4 times for cluster DE4.

Info for manual annotations of cluster DW:

- Start number 25 was manually annotated 1 time for cluster DW.

Info for manual annotations of cluster EP:

- Start number 28 was manually annotated 1 time for cluster EP.

Info for manual annotations of cluster F1:

- Start number 24 was manually annotated 54 times for cluster F1.

Info for manual annotations of cluster F2:

- Start number 24 was manually annotated 3 times for cluster F2.
- Start number 28 was manually annotated 1 time for cluster F2.

Info for manual annotations of cluster F5:

- Start number 24 was manually annotated 1 time for cluster F5.

Info for manual annotations of cluster P2:

- Start number 24 was manually annotated 1 time for cluster P2.

Info for manual annotations of cluster W:

- Start number 28 was manually annotated 8 times for cluster W.

Gene Information:

Gene: APunk_57 Start: 45213, Stop: 46196, Start Num: 26

Candidate Starts for APunk_57:

(Start: 26 @45213 has 35 MA's), (47, 45384), (58, 45465), (60, 45471), (61, 45483), (64, 45498), (65, 45501), (68, 45519), (102, 45669), (120, 45792), (124, 45813),

Gene: Abblin_56 Start: 45699, Stop: 46682, Start Num: 26

Candidate Starts for Abblin_56:

(Start: 26 @45699 has 35 MA's), (47, 45870), (58, 45951), (60, 45957), (61, 45969), (64, 45984), (65, 45987), (68, 46005), (102, 46155), (120, 46278), (124, 46299),

Gene: Archis_72 Start: 42871, Stop: 43959, Start Num: 27

Candidate Starts for Archis_72:

(Start: 27 @42871 has 21 MA's), (32, 42904), (Start: 39 @42961 has 1 MA's), (44, 43012), (46, 43033), (47, 43051), (52, 43078), (54, 43090), (58, 43135), (60, 43141), (61, 43153), (64, 43168), (77, 43243), (78, 43246), (84, 43267), (107, 43411), (121, 43504), (129, 43546), (154, 43903),

Gene: Argie_57 Start: 45566, Stop: 46306, Start Num: 28

Candidate Starts for Argie_57:

(Start: 28 @45566 has 16 MA's), (32, 45596), (35, 45623), (38, 45650), (42, 45689), (44, 45704), (45, 45707), (51, 45752), (53, 45767), (54, 45770), (56, 45788), (58, 45815), (61, 45833), (62, 45839), (63, 45848), (71, 45881), (72, 45893), (75, 45908), (76, 45914), (77, 45923), (78, 45926), (82, 45947), (96, 45980), (98, 45986), (128, 46202), (132, 46247), (133, 46268),

Gene: Arri_62 Start: 45658, Stop: 46908, Start Num: 26

Candidate Starts for Arri_62:

(2, 45196), (5, 45388), (7, 45394), (10, 45418), (12, 45493), (Start: 26 @45658 has 35 MA's), (30, 45685), (33, 45700), (35, 45724), (36, 45742), (50, 45862), (88, 46111), (91, 46123), (92, 46132), (105, 46225), (115, 46312), (119, 46336), (122, 46372), (156, 46825),

Gene: Azula_75 Start: 46763, Stop: 47851, Start Num: 27

Candidate Starts for Azula_75:

(Start: 27 @46763 has 21 MA's), (32, 46796), (Start: 39 @46853 has 1 MA's), (44, 46904), (46, 46925), (47, 46943), (52, 46970), (54, 46982), (58, 47027), (60, 47033), (61, 47045), (64, 47060), (77, 47135), (78, 47138), (84, 47159), (107, 47303), (129, 47438), (154, 47795),

Gene: Bakery_66 Start: 47819, Stop: 49147, Start Num: 26

Candidate Starts for Bakery_66:

(3, 47420), (4, 47462), (10, 47579), (12, 47654), (Start: 26 @47819 has 35 MA's), (30, 47846), (33, 47861), (35, 47885), (36, 47903), (50, 48023), (77, 48197), (88, 48272), (91, 48284), (92, 48293), (105, 48386), (115, 48473), (119, 48497), (122, 48533), (124, 48542), (156, 49070),

Gene: Barb_63 Start: 45475, Stop: 46785, Start Num: 26

Candidate Starts for Barb_63:

(10, 45235), (12, 45310), (Start: 26 @45475 has 35 MA's), (30, 45502), (33, 45517), (35, 45541), (36, 45559), (50, 45679), (88, 45928), (91, 45940), (92, 45949), (97, 45964), (105, 46042), (109, 46090), (112, 46156), (115, 46204), (119, 46228), (122, 46264), (156, 46717),

Gene: Begonia_69 Start: 45634, Stop: 46722, Start Num: 27

Candidate Starts for Begonia_69:

(Start: 27 @45634 has 21 MA's), (32, 45667), (Start: 39 @45724 has 1 MA's), (44, 45775), (46, 45796), (52, 45841), (54, 45853), (58, 45898), (60, 45904), (61, 45916), (64, 45931), (77, 46006), (78, 46009), (84, 46030), (107, 46174), (153, 46621), (154, 46666),

Gene: Blarby_83 Start: 45391, Stop: 46350, Start Num: 24

Candidate Starts for Blarby_83:

(Start: 24 @45391 has 59 MA's), (34, 45460), (Start: 39 @45496 has 1 MA's), (46, 45565), (55, 45625), (64, 45691), (67, 45709), (69, 45715), (70, 45721), (74, 45742), (76, 45757), (78, 45769), (79, 45772), (80, 45781), (87, 45832), (94, 45865), (97, 45874), (135, 46195), (144, 46333),

Gene: Blexus_71 Start: 46821, Stop: 47783, Start Num: 24

Candidate Starts for Blexus_71:

(Start: 24 @46821 has 59 MA's), (Start: 39 @46926 has 1 MA's), (46, 46995), (54, 47043), (67, 47139), (69, 47145), (70, 47151), (74, 47172), (76, 47187), (78, 47199), (79, 47202), (87, 47262), (88, 47268), (101, 47337), (111, 47409), (137, 47649), (141, 47727), (146, 47766), (148, 47772),

Gene: Blino_72 Start: 48361, Stop: 49449, Start Num: 27

Candidate Starts for Blino_72:

(Start: 27 @48361 has 21 MA's), (32, 48394), (Start: 39 @48451 has 1 MA's), (44, 48502), (46, 48523), (47, 48541), (54, 48580), (56, 48598), (58, 48625), (60, 48631), (61, 48643), (64, 48658), (77, 48733), (78, 48736), (84, 48757), (103, 48841), (107, 48901), (110, 48916), (121, 48994), (129, 49036), (154, 49393),

Gene: Blueberry_74 Start: 46763, Stop: 47851, Start Num: 27

Candidate Starts for Blueberry_74:

(Start: 27 @46763 has 21 MA's), (32, 46796), (Start: 39 @46853 has 1 MA's), (44, 46904), (46, 46925), (47, 46943), (52, 46970), (54, 46982), (58, 47027), (60, 47033), (61, 47045), (64, 47060), (77, 47135), (78, 47138), (84, 47159), (107, 47303), (129, 47438), (154, 47795),

Gene: BobaPhett_77 Start: 48939, Stop: 49901, Start Num: 24

Candidate Starts for BobaPhett_77:

(Start: 24 @48939 has 59 MA's), (Start: 39 @49044 has 1 MA's), (46, 49113), (54, 49161), (67, 49257), (69, 49263), (70, 49269), (74, 49290), (76, 49305), (78, 49317), (79, 49320), (80, 49329), (87, 49380), (88, 49386), (101, 49455), (111, 49527), (131, 49653), (137, 49767), (140, 49824), (141, 49845), (146, 49884), (148, 49890), (150, 49896),

Gene: Bran_48 Start: 34239, Stop: 35393, Start Num: 28

Candidate Starts for Bran_48:

(Start: 28 @34239 has 16 MA's), (42, 34365), (47, 34416), (48, 34422), (49, 34425), (60, 34497), (66, 34533), (67, 34542), (77, 34599), (79, 34605), (83, 34644), (89, 34677), (90, 34680), (125, 34947), (126, 34959), (145, 35244), (152, 35289),

Gene: Brocalys_66 Start: 44419, Stop: 45381, Start Num: 24

Candidate Starts for Brocalys_66:

(Start: 24 @44419 has 59 MA's), (Start: 39 @44524 has 1 MA's), (46, 44593), (54, 44641), (67, 44737), (69, 44743), (70, 44749), (74, 44770), (76, 44785), (78, 44797), (79, 44800), (80, 44809), (87, 44860), (88, 44866), (101, 44935), (111, 45007), (131, 45133), (137, 45247), (140, 45304), (141, 45325), (146, 45364), (148, 45370), (150, 45376),

Gene: Bubbles123_70 Start: 46448, Stop: 47410, Start Num: 24

Candidate Starts for Bubbles123_70:

(Start: 24 @46448 has 59 MA's), (Start: 39 @46553 has 1 MA's), (40, 46556), (46, 46622), (54, 46670), (67, 46766), (69, 46772), (70, 46778), (74, 46799), (76, 46814), (78, 46826), (79, 46829), (80, 46838), (87, 46889), (88, 46895), (101, 46964), (131, 47162), (137, 47276), (140, 47333), (141, 47354), (146, 47393), (148, 47399), (150, 47405),

Gene: Burwell21_71 Start: 46257, Stop: 47231, Start Num: 24

Candidate Starts for Burwell21_71:

(Start: 24 @46257 has 59 MA's), (Start: 39 @46362 has 1 MA's), (46, 46431), (54, 46479), (67, 46575), (69, 46581), (70, 46587), (74, 46608), (76, 46623), (78, 46635), (79, 46638), (87, 46698), (88, 46704), (101, 46773), (111, 46857), (137, 47097), (141, 47175), (146, 47214), (148, 47220),

Gene: Byougenkin_73 Start: 44317, Stop: 45279, Start Num: 24

Candidate Starts for Byougenkin_73:

(Start: 24 @44317 has 59 MA's), (Start: 39 @44422 has 1 MA's), (40, 44425), (46, 44491), (54, 44539), (67, 44635), (69, 44641), (70, 44647), (74, 44668), (76, 44683), (78, 44695), (79, 44698), (80, 44707), (87, 44758), (88, 44764), (101, 44833), (131, 45031), (137, 45145), (140, 45202), (141, 45223), (146, 45262), (148, 45268), (150, 45274),

Gene: CaptainKirk2_71 Start: 42346, Stop: 43434, Start Num: 27

Candidate Starts for CaptainKirk2_71:

(16, 42277), (Start: 27 @42346 has 21 MA's), (32, 42379), (Start: 39 @42436 has 1 MA's), (44, 42487), (46, 42508), (47, 42526), (54, 42565), (58, 42610), (60, 42616), (61, 42628), (64, 42643), (77, 42718), (78, 42721), (84, 42742), (107, 42886), (129, 43021), (153, 43333), (154, 43378),

Gene: CarolAnn_71 Start: 48360, Stop: 49448, Start Num: 27

Candidate Starts for CarolAnn_71:

(Start: 27 @48360 has 21 MA's), (32, 48393), (Start: 39 @48450 has 1 MA's), (44, 48501), (46, 48522), (47, 48540), (54, 48579), (56, 48597), (58, 48624), (60, 48630), (61, 48642), (64, 48657), (77, 48732), (78, 48735), (84, 48756), (103, 48840), (107, 48900), (110, 48915), (121, 48993), (129, 49035), (154, 49392),

Gene: Cepens_56 Start: 45281, Stop: 46021, Start Num: 28

Candidate Starts for Cepens_56:

(Start: 28 @45281 has 16 MA's), (32, 45311), (35, 45338), (38, 45365), (42, 45404), (44, 45419), (45, 45422), (51, 45467), (53, 45482), (54, 45485), (56, 45503), (58, 45530), (61, 45548), (62, 45554), (63, 45563), (71, 45596), (72, 45608), (75, 45623), (76, 45629), (77, 45638), (78, 45641), (82, 45662), (96, 45695), (98, 45701), (128, 45917), (132, 45962),

Gene: ClamChowder_63 Start: 45475, Stop: 46785, Start Num: 26

Candidate Starts for ClamChowder_63:

(10, 45235), (12, 45310), (Start: 26 @45475 has 35 MA's), (30, 45502), (33, 45517), (35, 45541), (36, 45559), (50, 45679), (88, 45928), (91, 45940), (92, 45949), (97, 45964), (105, 46042), (109, 46090), (112, 46156), (115, 46204), (119, 46228), (122, 46264), (156, 46717),

Gene: Clifton_67 Start: 44770, Stop: 45729, Start Num: 24

Candidate Starts for Clifton_67:

(Start: 24 @44770 has 59 MA's), (Start: 39 @44875 has 1 MA's), (46, 44944), (67, 45088), (69, 45094), (70, 45100), (74, 45121), (76, 45136), (78, 45148), (79, 45151), (80, 45160), (87, 45211), (88, 45217), (101, 45286), (111, 45358), (135, 45574), (144, 45712),

Gene: Cornie_70 Start: 45038, Stop: 46000, Start Num: 24

Candidate Starts for Cornie_70:

(Start: 24 @45038 has 59 MA's), (Start: 39 @45143 has 1 MA's), (46, 45212), (54, 45260), (67, 45356), (69, 45362), (70, 45368), (74, 45389), (76, 45404), (78, 45416), (79, 45419), (80, 45428), (87, 45479), (88, 45485), (101, 45554), (111, 45626), (137, 45866), (140, 45923), (141, 45944), (146, 45983), (148, 45989),

Gene: D12_55 Start: 45829, Stop: 46569, Start Num: 28

Candidate Starts for D12_55:

(Start: 28 @45829 has 16 MA's), (32, 45859), (35, 45886), (38, 45913), (42, 45952), (44, 45967), (45, 45970), (51, 46015), (53, 46030), (54, 46033), (56, 46051), (58, 46078), (61, 46096), (62, 46102), (63, 46111), (71, 46144), (72, 46156), (75, 46171), (76, 46177), (77, 46186), (78, 46189), (82, 46210), (96, 46243), (98, 46249), (128, 46465), (132, 46510),

Gene: DRBy19_78 Start: 48499, Stop: 49458, Start Num: 24

Candidate Starts for DRBy19_78:

(Start: 24 @48499 has 59 MA's), (Start: 39 @48604 has 1 MA's), (46, 48673), (54, 48721), (67, 48817), (69, 48823), (70, 48829), (74, 48850), (76, 48865), (78, 48877), (79, 48880), (80, 48889), (87, 48940), (88, 48946), (101, 49015), (111, 49087), (135, 49303), (144, 49441),

Gene: Danyall_62 Start: 45579, Stop: 46880, Start Num: 26

Candidate Starts for Danyall_62:

(10, 45339), (12, 45414), (Start: 26 @45579 has 35 MA's), (30, 45606), (33, 45621), (35, 45645), (36, 45663), (50, 45783), (77, 45957), (88, 46032), (91, 46044), (92, 46053), (105, 46146), (115, 46233), (119, 46257), (122, 46293), (124, 46302), (156, 46830),

Gene: Delian_74 Start: 42344, Stop: 43432, Start Num: 27

Candidate Starts for Delian_74:

(16, 42275), (Start: 27 @42344 has 21 MA's), (32, 42377), (Start: 39 @42434 has 1 MA's), (44, 42485), (46, 42506), (47, 42524), (54, 42563), (58, 42608), (60, 42614), (61, 42626), (64, 42641), (77, 42716), (78, 42719), (84, 42740), (107, 42884), (129, 43019), (153, 43331), (154, 43376),

Gene: DirtMcgirt_72 Start: 43696, Stop: 44670, Start Num: 24

Candidate Starts for DirtMcgirt_72:

(Start: 24 @43696 has 59 MA's), (Start: 39 @43801 has 1 MA's), (40, 43804), (46, 43870), (54, 43918), (67, 44014), (69, 44020), (70, 44026), (74, 44047), (76, 44062), (78, 44074), (79, 44077), (87, 44137), (88, 44143), (101, 44212), (111, 44296), (137, 44536), (141, 44614), (146, 44653), (148, 44659),

Gene: DotProduct_71 Start: 45337, Stop: 46311, Start Num: 24

Candidate Starts for DotProduct_71:

(19, 45292), (20, 45298), (Start: 24 @45337 has 59 MA's), (Start: 39 @45442 has 1 MA's), (40, 45445), (46, 45511), (67, 45655), (69, 45661), (70, 45667), (74, 45688), (76, 45703), (78, 45715), (79, 45718), (87, 45778), (88, 45784), (101, 45853), (111, 45937), (137, 46177), (141, 46255), (146, 46294), (148, 46300),

Gene: Drago_70 Start: 43699, Stop: 44673, Start Num: 24

Candidate Starts for Drago_70:

(Start: 24 @43699 has 59 MA's), (Start: 39 @43804 has 1 MA's), (40, 43807), (46, 43873), (54, 43921), (67, 44017), (69, 44023), (70, 44029), (74, 44050), (76, 44065), (78, 44077), (79, 44080), (87, 44140), (88, 44146), (101, 44215), (111, 44299), (137, 44539), (141, 44617), (146, 44656), (148, 44662),

Gene: Enby_74 Start: 43975, Stop: 44949, Start Num: 24

Candidate Starts for Enby_74:

(Start: 24 @43975 has 59 MA's), (Start: 39 @44080 has 1 MA's), (40, 44083), (46, 44149), (54, 44197), (67, 44293), (69, 44299), (70, 44305), (74, 44326), (76, 44341), (78, 44353), (79, 44356), (87, 44416), (88, 44422), (101, 44491), (111, 44575), (137, 44815), (141, 44893), (146, 44932), (148, 44938),

Gene: Evamon_60 Start: 45175, Stop: 46323, Start Num: 26

Candidate Starts for Evamon_60:

(Start: 26 @45175 has 35 MA's), (47, 45346), (56, 45400), (61, 45445), (73, 45508), (100, 45619), (118, 45754), (123, 45799), (156, 46255),

Gene: Fairfaxidum_73 Start: 44912, Stop: 45919, Start Num: 28

Candidate Starts for Fairfaxidum_73:

(Start: 28 @44912 has 16 MA's), (42, 45038), (49, 45098), (54, 45119), (57, 45140), (58, 45164), (59, 45167), (60, 45170), (70, 45227), (76, 45263), (77, 45272), (81, 45290), (101, 45383), (108, 45443), (109, 45449), (113, 45479), (117, 45503), (149, 45872),

Gene: Fireball_64 Start: 46050, Stop: 47180, Start Num: 26

Candidate Starts for Fireball_64:

(Start: 26 @46050 has 35 MA's), (47, 46221), (56, 46275), (61, 46320), (73, 46383), (100, 46494), (118, 46629), (123, 46674), (156, 47130),

Gene: Firehouse51_71 Start: 47592, Stop: 48557, Start Num: 24

Candidate Starts for Firehouse51_71:

(Start: 24 @47592 has 59 MA's), (34, 47661), (Start: 39 @47697 has 1 MA's), (46, 47766), (55, 47826), (64, 47892), (67, 47910), (69, 47916), (70, 47922), (74, 47943), (76, 47958), (78, 47970), (79,

47973), (80, 47982), (87, 48033), (94, 48066), (97, 48075), (135, 48402), (144, 48540),

Gene: Fugax_64 Start: 45467, Stop: 46777, Start Num: 26

Candidate Starts for Fugax_64:

(10, 45227), (12, 45302), (Start: 26 @45467 has 35 MA's), (30, 45494), (33, 45509), (35, 45533), (36, 45551), (50, 45671), (88, 45920), (91, 45932), (92, 45941), (97, 45956), (105, 46034), (109, 46082), (112, 46148), (115, 46196), (119, 46220), (122, 46256), (156, 46709),

Gene: GUmbie_69 Start: 45769, Stop: 46728, Start Num: 24

Candidate Starts for GUmbie_69:

(Start: 24 @45769 has 59 MA's), (Start: 39 @45874 has 1 MA's), (46, 45943), (54, 45991), (67, 46087), (69, 46093), (70, 46099), (74, 46120), (76, 46135), (78, 46147), (79, 46150), (80, 46159), (87, 46210), (88, 46216), (101, 46285), (111, 46357), (135, 46573), (144, 46711),

Gene: Gambino_77 Start: 46763, Stop: 47851, Start Num: 27

Candidate Starts for Gambino_77:

(Start: 27 @46763 has 21 MA's), (32, 46796), (Start: 39 @46853 has 1 MA's), (44, 46904), (46, 46925), (47, 46943), (52, 46970), (54, 46982), (58, 47027), (60, 47033), (61, 47045), (64, 47060), (77, 47135), (78, 47138), (84, 47159), (107, 47303), (129, 47438), (154, 47795),

Gene: Gandalph_73 Start: 43785, Stop: 44759, Start Num: 24

Candidate Starts for Gandalph_73:

(15, 43689), (20, 43746), (Start: 24 @43785 has 59 MA's), (Start: 39 @43890 has 1 MA's), (40, 43893), (46, 43959), (67, 44103), (69, 44109), (70, 44115), (74, 44136), (76, 44151), (78, 44163), (79, 44166), (87, 44226), (88, 44232), (101, 44301), (111, 44385), (137, 44625), (141, 44703), (146, 44742), (148, 44748),

Gene: Gezellig_62 Start: 45526, Stop: 46776, Start Num: 26

Candidate Starts for Gezellig_62:

(2, 45064), (5, 45256), (7, 45262), (10, 45286), (12, 45361), (Start: 26 @45526 has 35 MA's), (30, 45553), (33, 45568), (35, 45592), (36, 45610), (50, 45730), (88, 45979), (91, 45991), (92, 46000), (105, 46093), (115, 46180), (119, 46204), (122, 46240), (156, 46693),

Gene: GigiOuiOui_69 Start: 45428, Stop: 46402, Start Num: 24

Candidate Starts for GigiOuiOui_69:

(19, 45383), (20, 45389), (Start: 24 @45428 has 59 MA's), (Start: 39 @45533 has 1 MA's), (40, 45536), (46, 45602), (67, 45746), (69, 45752), (70, 45758), (74, 45779), (76, 45794), (78, 45806), (79, 45809), (87, 45869), (88, 45875), (101, 45944), (111, 46028), (137, 46268), (141, 46346), (146, 46385), (148, 46391),

Gene: GodPhather_57 Start: 46069, Stop: 46809, Start Num: 28

Candidate Starts for GodPhather_57:

(Start: 28 @46069 has 16 MA's), (32, 46099), (35, 46126), (38, 46153), (42, 46192), (44, 46207), (45, 46210), (51, 46255), (53, 46270), (54, 46273), (56, 46291), (58, 46318), (61, 46336), (62, 46342), (63, 46351), (71, 46384), (72, 46396), (75, 46411), (76, 46417), (77, 46426), (78, 46429), (82, 46450), (96, 46483), (98, 46489), (128, 46705), (132, 46750), (133, 46771),

Gene: Gorge_76 Start: 47709, Stop: 48668, Start Num: 24

Candidate Starts for Gorge_76:

(Start: 24 @47709 has 59 MA's), (Start: 39 @47814 has 1 MA's), (46, 47883), (54, 47931), (67, 48027), (69, 48033), (70, 48039), (74, 48060), (76, 48075), (78, 48087), (79, 48090), (80, 48099), (87, 48150), (88, 48156), (101, 48225), (111, 48297), (135, 48513), (144, 48651),

Gene: Guacamole_69 Start: 43764, Stop: 44852, Start Num: 27

Candidate Starts for Guacamole_69:

(Start: 27 @43764 has 21 MA's), (32, 43797), (Start: 39 @43854 has 1 MA's), (44, 43905), (46, 43926), (47, 43944), (54, 43983), (58, 44028), (60, 44034), (61, 44046), (64, 44061), (77, 44136), (78, 44139), (84, 44160), (107, 44304), (129, 44439), (153, 44751), (154, 44796),

Gene: Halo3_60 Start: 46111, Stop: 47361, Start Num: 26

Candidate Starts for Halo3_60:

(2, 45649), (5, 45841), (7, 45847), (10, 45871), (12, 45946), (Start: 26 @46111 has 35 MA's), (30, 46138), (33, 46153), (35, 46177), (36, 46195), (50, 46315), (88, 46564), (91, 46576), (92, 46585), (105, 46678), (115, 46765), (119, 46789), (122, 46825), (156, 47278),

Gene: Hitter_70 Start: 42307, Stop: 43395, Start Num: 27

Candidate Starts for Hitter_70:

(Start: 27 @42307 has 21 MA's), (32, 42340), (Start: 39 @42397 has 1 MA's), (44, 42448), (46, 42469), (47, 42487), (54, 42526), (58, 42571), (60, 42577), (61, 42589), (64, 42604), (77, 42679), (78, 42682), (84, 42703), (107, 42847), (121, 42940), (129, 42982), (153, 43294), (154, 43339),

Gene: lbOuu_72 Start: 44576, Stop: 45535, Start Num: 24

Candidate Starts for lbOuu_72:

(Start: 24 @44576 has 59 MA's), (34, 44645), (Start: 39 @44681 has 1 MA's), (46, 44750), (55, 44810), (64, 44876), (67, 44894), (69, 44900), (70, 44906), (74, 44927), (76, 44942), (78, 44954), (79, 44957), (80, 44966), (87, 45017), (94, 45050), (97, 45059), (135, 45380), (144, 45518),

Gene: lbhubesi_72 Start: 44099, Stop: 45073, Start Num: 24

Candidate Starts for lbhubesi_72:

(Start: 24 @44099 has 59 MA's), (Start: 39 @44204 has 1 MA's), (46, 44273), (67, 44417), (69, 44423), (70, 44429), (74, 44450), (76, 44465), (78, 44477), (79, 44480), (87, 44540), (88, 44546), (94, 44573), (97, 44582), (101, 44615), (111, 44699), (131, 44825), (137, 44939), (140, 44996), (141, 45017), (146, 45056), (148, 45062), (150, 45068),

Gene: IrishSherpFalk_75 Start: 47171, Stop: 48133, Start Num: 24

Candidate Starts for IrishSherpFalk_75:

(Start: 24 @47171 has 59 MA's), (34, 47240), (Start: 39 @47276 has 1 MA's), (40, 47279), (46, 47345), (54, 47393), (67, 47489), (69, 47495), (70, 47501), (74, 47522), (76, 47537), (78, 47549), (79, 47552), (80, 47561), (87, 47612), (88, 47618), (101, 47687), (131, 47885), (137, 47999), (140, 48056), (141, 48077), (146, 48116), (148, 48122), (150, 48128),

Gene: Jabbawokkie_84 Start: 45311, Stop: 46270, Start Num: 24

Candidate Starts for Jabbawokkie_84:

(Start: 24 @45311 has 59 MA's), (34, 45380), (Start: 39 @45416 has 1 MA's), (46, 45485), (55, 45545), (64, 45611), (67, 45629), (69, 45635), (70, 45641), (74, 45662), (76, 45677), (78, 45689), (79, 45692), (80, 45701), (87, 45752), (94, 45785), (97, 45794), (135, 46115), (144, 46253),

Gene: Jalammah_74 Start: 45851, Stop: 46816, Start Num: 26

Candidate Starts for Jalammah_74:

(Start: 26 @45851 has 35 MA's), (47, 46022), (51, 46040), (60, 46109), (61, 46121), (64, 46136), (73, 46184), (85, 46235), (93, 46259), (118, 46391), (136, 46586), (143, 46715), (151, 46760),

Gene: Jambalaya_60 Start: 45314, Stop: 46627, Start Num: 26

Candidate Starts for Jambalaya_60:

(6, 45041), (8, 45047), (10, 45074), (12, 45149), (Start: 26 @45314 has 35 MA's), (30, 45341), (33, 45356), (35, 45380), (36, 45398), (60, 45590), (77, 45692), (88, 45767), (91, 45779), (92, 45788),

(105, 45881), (115, 45968), (119, 45992), (122, 46028), (124, 46037), (138, 46322), (156, 46565),

Gene: James_75 Start: 47834, Stop: 48793, Start Num: 24

Candidate Starts for James_75:

(Start: 24 @47834 has 59 MA's), (Start: 39 @47939 has 1 MA's), (46, 48008), (54, 48056), (67, 48152), (69, 48158), (70, 48164), (74, 48185), (76, 48200), (78, 48212), (79, 48215), (80, 48224), (87, 48275), (88, 48281), (101, 48350), (111, 48422), (135, 48638), (144, 48776),

Gene: Jacob_74 Start: 47431, Stop: 48390, Start Num: 24

Candidate Starts for Jacob_74:

(Start: 24 @47431 has 59 MA's), (Start: 39 @47536 has 1 MA's), (46, 47605), (54, 47653), (67, 47749), (69, 47755), (70, 47761), (74, 47782), (76, 47797), (78, 47809), (79, 47812), (80, 47821), (87, 47872), (88, 47878), (101, 47947), (111, 48019), (135, 48235), (144, 48373),

Gene: JasperJr_69 Start: 43764, Stop: 44852, Start Num: 27

Candidate Starts for JasperJr_69:

(Start: 27 @43764 has 21 MA's), (32, 43797), (Start: 39 @43854 has 1 MA's), (44, 43905), (46, 43926), (47, 43944), (54, 43983), (58, 44028), (60, 44034), (61, 44046), (64, 44061), (77, 44136), (78, 44139), (84, 44160), (107, 44304), (129, 44439), (153, 44751), (154, 44796),

Gene: Jeon_56 Start: 45811, Stop: 46551, Start Num: 28

Candidate Starts for Jeon_56:

(Start: 28 @45811 has 16 MA's), (32, 45841), (35, 45868), (38, 45895), (42, 45934), (44, 45949), (45, 45952), (51, 45997), (53, 46012), (54, 46015), (56, 46033), (58, 46060), (61, 46078), (62, 46084), (63, 46093), (71, 46126), (72, 46138), (75, 46153), (76, 46159), (77, 46168), (78, 46171), (82, 46192), (96, 46225), (98, 46231), (128, 46447), (132, 46492), (133, 46513),

Gene: JuJu_79 Start: 48506, Stop: 49594, Start Num: 27

Candidate Starts for JuJu_79:

(Start: 27 @48506 has 21 MA's), (32, 48539), (Start: 39 @48596 has 1 MA's), (41, 48617), (44, 48647), (46, 48668), (47, 48686), (54, 48725), (58, 48770), (61, 48788), (64, 48803), (77, 48878), (78, 48881), (84, 48902), (103, 48986), (107, 49046), (121, 49139), (127, 49172), (129, 49181), (153, 49493), (154, 49538),

Gene: KappaFarmDelta_70 Start: 43343, Stop: 44431, Start Num: 27

Candidate Starts for KappaFarmDelta_70:

(Start: 27 @43343 has 21 MA's), (32, 43376), (Start: 39 @43433 has 1 MA's), (43, 43478), (44, 43484), (46, 43505), (47, 43523), (52, 43550), (54, 43562), (58, 43607), (60, 43613), (61, 43625), (64, 43640), (77, 43715), (78, 43718), (84, 43739), (99, 43790), (107, 43883), (129, 44018), (153, 44330), (154, 44375),

Gene: Kenuha5_72 Start: 47146, Stop: 48120, Start Num: 24

Candidate Starts for Kenuha5_72:

(19, 47101), (20, 47107), (Start: 24 @47146 has 59 MA's), (Start: 39 @47251 has 1 MA's), (40, 47254), (46, 47320), (67, 47464), (69, 47470), (70, 47476), (74, 47497), (76, 47512), (78, 47524), (79, 47527), (87, 47587), (88, 47593), (101, 47662), (111, 47746), (137, 47986), (141, 48064), (146, 48103), (148, 48109),

Gene: Kimberlium_74 Start: 45482, Stop: 46441, Start Num: 24

Candidate Starts for Kimberlium_74:

(Start: 24 @45482 has 59 MA's), (34, 45551), (Start: 39 @45587 has 1 MA's), (46, 45656), (55, 45716), (64, 45782), (67, 45800), (69, 45806), (70, 45812), (74, 45833), (76, 45848), (78, 45860), (79, 45863), (80, 45872), (87, 45923), (94, 45956), (97, 45965), (135, 46286), (144, 46424),

Gene: KimmyK_62 Start: 45909, Stop: 47219, Start Num: 26

Candidate Starts for KimmyK_62:

(10, 45669), (12, 45744), (Start: 26 @45909 has 35 MA's), (30, 45936), (33, 45951), (35, 45975), (36, 45993), (50, 46113), (88, 46362), (91, 46374), (92, 46383), (97, 46398), (105, 46476), (109, 46524), (112, 46590), (115, 46638), (119, 46662), (122, 46698), (156, 47151),

Gene: Koella_66 Start: 42238, Stop: 43200, Start Num: 24

Candidate Starts for Koella_66:

(Start: 24 @42238 has 59 MA's), (Start: 39 @42343 has 1 MA's), (46, 42412), (67, 42556), (69, 42562), (70, 42568), (74, 42589), (76, 42604), (78, 42616), (79, 42619), (80, 42628), (87, 42679), (88, 42685), (101, 42754), (111, 42826), (131, 42952), (137, 43066), (140, 43123), (141, 43144), (146, 43183), (148, 43189), (150, 43195),

Gene: LastJedi_66 Start: 44813, Stop: 45775, Start Num: 24

Candidate Starts for LastJedi_66:

(Start: 24 @44813 has 59 MA's), (Start: 39 @44918 has 1 MA's), (46, 44987), (67, 45131), (69, 45137), (70, 45143), (74, 45164), (76, 45179), (78, 45191), (79, 45194), (80, 45203), (87, 45254), (88, 45260), (101, 45329), (111, 45401), (131, 45527), (137, 45641), (140, 45698), (141, 45719), (146, 45758), (148, 45764), (150, 45770),

Gene: Latretium_71 Start: 44253, Stop: 45215, Start Num: 24

Candidate Starts for Latretium_71:

(Start: 24 @44253 has 59 MA's), (Start: 39 @44358 has 1 MA's), (40, 44361), (46, 44427), (54, 44475), (67, 44571), (69, 44577), (70, 44583), (74, 44604), (76, 44619), (78, 44631), (79, 44634), (87, 44694), (88, 44700), (101, 44769), (111, 44841), (131, 44967), (137, 45081), (140, 45138), (141, 45159), (146, 45198), (148, 45204), (150, 45210),

Gene: Leozinho_74 Start: 44494, Stop: 45468, Start Num: 24

Candidate Starts for Leozinho_74:

(Start: 24 @44494 has 59 MA's), (Start: 39 @44599 has 1 MA's), (40, 44602), (46, 44668), (54, 44716), (67, 44812), (69, 44818), (70, 44824), (74, 44845), (76, 44860), (78, 44872), (79, 44875), (87, 44935), (88, 44941), (101, 45010), (111, 45094), (137, 45334), (141, 45412), (146, 45451), (148, 45457),

Gene: Lizziana_79 Start: 48157, Stop: 49116, Start Num: 24

Candidate Starts for Lizziana_79:

(Start: 24 @48157 has 59 MA's), (Start: 39 @48262 has 1 MA's), (46, 48331), (54, 48379), (67, 48475), (69, 48481), (70, 48487), (74, 48508), (76, 48523), (78, 48535), (79, 48538), (80, 48547), (87, 48598), (88, 48604), (101, 48673), (111, 48745), (135, 48961), (144, 49099),

Gene: Llij_69 Start: 43853, Stop: 44827, Start Num: 24

Candidate Starts for Llij_69:

(Start: 24 @43853 has 59 MA's), (Start: 39 @43958 has 1 MA's), (40, 43961), (46, 44027), (54, 44075), (67, 44171), (69, 44177), (70, 44183), (74, 44204), (76, 44219), (78, 44231), (79, 44234), (87, 44294), (88, 44300), (101, 44369), (111, 44453), (137, 44693), (141, 44771), (146, 44810), (148, 44816),

Gene: Lorde_73 Start: 43140, Stop: 44114, Start Num: 24

Candidate Starts for Lorde_73:

(Start: 24 @43140 has 59 MA's), (Start: 39 @43245 has 1 MA's), (40, 43248), (46, 43314), (54, 43362), (67, 43458), (69, 43464), (70, 43470), (74, 43491), (76, 43506), (78, 43518), (79, 43521), (87, 43581), (88, 43587), (101, 43656), (111, 43740), (137, 43980), (141, 44058), (146, 44097), (148,

44103),

Gene: Malachai_69 Start: 45634, Stop: 46722, Start Num: 27

Candidate Starts for Malachai_69:

(Start: 27 @45634 has 21 MA's), (32, 45667), (Start: 39 @45724 has 1 MA's), (44, 45775), (46, 45796), (52, 45841), (54, 45853), (58, 45898), (60, 45904), (61, 45916), (64, 45931), (77, 46006), (78, 46009), (84, 46030), (107, 46174), (153, 46621), (154, 46666),

Gene: Maravista_76 Start: 49173, Stop: 50147, Start Num: 24

Candidate Starts for Maravista_76:

(Start: 24 @49173 has 59 MA's), (Start: 39 @49278 has 1 MA's), (40, 49281), (46, 49347), (54, 49395), (67, 49491), (69, 49497), (70, 49503), (74, 49524), (76, 49539), (78, 49551), (79, 49554), (87, 49614), (88, 49620), (101, 49689), (111, 49773), (137, 50013), (141, 50091), (146, 50130), (148, 50136),

Gene: Martik_76 Start: 48654, Stop: 49628, Start Num: 24

Candidate Starts for Martik_76:

(Start: 24 @48654 has 59 MA's), (Start: 39 @48759 has 1 MA's), (40, 48762), (46, 48828), (54, 48876), (67, 48972), (69, 48978), (70, 48984), (74, 49005), (76, 49020), (78, 49032), (79, 49035), (87, 49095), (88, 49101), (101, 49170), (111, 49254), (137, 49494), (141, 49572), (146, 49611), (148, 49617),

Gene: Mask_84 Start: 59009, Stop: 60175, Start Num: 26

Candidate Starts for Mask_84:

(9, 58742), (11, 58835), (14, 58895), (Start: 26 @59009 has 35 MA's), (Start: 39 @59102 has 1 MA's), (46, 59174), (54, 59231), (67, 59327), (73, 59357), (77, 59384), (78, 59387), (80, 59399), (84, 59408), (86, 59423), (101, 59498), (104, 59534), (147, 60017), (154, 60098), (155, 60119),

Gene: Mattes_76 Start: 47834, Stop: 48793, Start Num: 24

Candidate Starts for Mattes_76:

(Start: 24 @47834 has 59 MA's), (Start: 39 @47939 has 1 MA's), (46, 48008), (54, 48056), (67, 48152), (69, 48158), (70, 48164), (74, 48185), (76, 48200), (78, 48212), (79, 48215), (80, 48224), (87, 48275), (88, 48281), (101, 48350), (111, 48422), (135, 48638), (144, 48776),

Gene: Mbo4_58 Start: 41491, Stop: 42477, Start Num: 25

Candidate Starts for Mbo4_58:

(13, 41344), (Start: 24 @41488 has 59 MA's), (Start: 25 @41491 has 1 MA's), (38, 41590), (Start: 39 @41593 has 1 MA's), (40, 41596), (41, 41614), (49, 41689), (59, 41758), (60, 41761), (67, 41806), (95, 41935), (97, 41941), (98, 41944), (101, 41974), (130, 42151),

Gene: Megabear_56 Start: 45202, Stop: 45942, Start Num: 28

Candidate Starts for Megabear_56:

(Start: 28 @45202 has 16 MA's), (32, 45232), (35, 45259), (38, 45286), (42, 45325), (44, 45340), (45, 45343), (51, 45388), (53, 45403), (54, 45406), (56, 45424), (58, 45451), (61, 45469), (62, 45475), (63, 45484), (71, 45517), (72, 45529), (75, 45544), (76, 45550), (77, 45559), (78, 45562), (82, 45583), (96, 45616), (98, 45622), (128, 45838), (132, 45883),

Gene: Mellie_67 Start: 42565, Stop: 43650, Start Num: 27

Candidate Starts for Mellie_67:

(Start: 27 @42565 has 21 MA's), (29, 42580), (32, 42598), (Start: 39 @42655 has 1 MA's), (44, 42706), (46, 42727), (47, 42745), (54, 42784), (58, 42829), (60, 42835), (61, 42847), (64, 42862), (77, 42937), (78, 42940), (84, 42961), (107, 43105), (121, 43198), (129, 43240), (154, 43597),

Gene: MinionDave_70 Start: 46095, Stop: 47069, Start Num: 24

Candidate Starts for MinionDave_70:

(Start: 24 @46095 has 59 MA's), (Start: 39 @46200 has 1 MA's), (40, 46203), (46, 46269), (67, 46413), (69, 46419), (70, 46425), (74, 46446), (76, 46461), (78, 46473), (79, 46476), (87, 46536), (88, 46542), (101, 46611), (111, 46695), (137, 46935), (140, 46992), (141, 47013), (146, 47052), (148, 47058),

Gene: MintFen_71 Start: 43050, Stop: 44048, Start Num: 39

Candidate Starts for MintFen_71:

(16, 42891), (Start: 27 @42960 has 21 MA's), (32, 42993), (Start: 39 @43050 has 1 MA's), (44, 43101), (46, 43122), (47, 43140), (54, 43179), (58, 43224), (60, 43230), (61, 43242), (64, 43257), (77, 43332), (78, 43335), (84, 43356), (107, 43500), (129, 43635), (153, 43947), (154, 43992),

Gene: MissRona_75 Start: 46764, Stop: 47852, Start Num: 27

Candidate Starts for MissRona_75:

(Start: 27 @46764 has 21 MA's), (32, 46797), (Start: 39 @46854 has 1 MA's), (44, 46905), (46, 46926), (47, 46944), (52, 46971), (54, 46983), (58, 47028), (60, 47034), (61, 47046), (64, 47061), (77, 47136), (78, 47139), (84, 47160), (107, 47304), (129, 47439), (154, 47796),

Gene: Mutzi_60 Start: 46826, Stop: 48058, Start Num: 26

Candidate Starts for Mutzi_60:

(10, 46586), (12, 46661), (Start: 26 @46826 has 35 MA's), (30, 46853), (33, 46868), (35, 46892), (36, 46910), (50, 47030), (88, 47279), (91, 47291), (92, 47300), (105, 47393), (115, 47480), (119, 47504), (122, 47540), (156, 47993),

Gene: Natkenzie_56 Start: 45699, Stop: 46682, Start Num: 26

Candidate Starts for Natkenzie_56:

(Start: 26 @45699 has 35 MA's), (47, 45870), (58, 45951), (60, 45957), (61, 45969), (64, 45984), (65, 45987), (68, 46005), (102, 46155), (120, 46278), (124, 46299),

Gene: NormanBulbieJr_71 Start: 46252, Stop: 47214, Start Num: 24

Candidate Starts for NormanBulbieJr_71:

(Start: 24 @46252 has 59 MA's), (Start: 39 @46357 has 1 MA's), (46, 46426), (67, 46570), (69, 46576), (70, 46582), (74, 46603), (76, 46618), (78, 46630), (79, 46633), (80, 46642), (87, 46693), (88, 46699), (101, 46768), (111, 46840), (131, 46966), (137, 47080), (140, 47137), (141, 47158), (146, 47197), (148, 47203), (150, 47209),

Gene: Nubi_61 Start: 45280, Stop: 46428, Start Num: 26

Candidate Starts for Nubi_61:

(Start: 26 @45280 has 35 MA's), (47, 45451), (56, 45505), (61, 45550), (73, 45613), (100, 45724), (118, 45859), (123, 45904), (156, 46360),

Gene: Obliviate_69 Start: 42872, Stop: 43960, Start Num: 27

Candidate Starts for Obliviate_69:

(Start: 27 @42872 has 21 MA's), (32, 42905), (37, 42953), (Start: 39 @42962 has 1 MA's), (44, 43013), (46, 43034), (47, 43052), (54, 43091), (58, 43136), (60, 43142), (61, 43154), (64, 43169), (77, 43244), (78, 43247), (84, 43268), (107, 43412), (116, 43454), (129, 43547), (153, 43859), (154, 43904),

Gene: OlympiaSaint_74 Start: 46776, Stop: 47735, Start Num: 24

Candidate Starts for OlympiaSaint_74:

(Start: 24 @46776 has 59 MA's), (Start: 39 @46881 has 1 MA's), (46, 46950), (54, 46998), (67, 47094), (69, 47100), (70, 47106), (74, 47127), (76, 47142), (78, 47154), (79, 47157), (80, 47166), (87,

47217), (88, 47223), (101, 47292), (111, 47364), (135, 47580), (144, 47718),

Gene: PCoral7_70 Start: 43685, Stop: 44692, Start Num: 28

Candidate Starts for PCoral7_70:

(Start: 28 @43685 has 16 MA's), (42, 43811), (49, 43871), (54, 43892), (57, 43913), (58, 43937), (59, 43940), (60, 43943), (70, 44000), (76, 44036), (77, 44045), (81, 44063), (101, 44156), (108, 44216), (109, 44222), (113, 44252), (117, 44276), (149, 44645),

Gene: PR_56 Start: 45806, Stop: 46546, Start Num: 28

Candidate Starts for PR_56:

(Start: 28 @45806 has 16 MA's), (32, 45836), (35, 45863), (38, 45890), (42, 45929), (44, 45944), (45, 45947), (51, 45992), (53, 46007), (54, 46010), (56, 46028), (58, 46055), (61, 46073), (62, 46079), (63, 46088), (71, 46121), (72, 46133), (75, 46148), (76, 46154), (77, 46163), (78, 46166), (82, 46187), (96, 46220), (98, 46226), (128, 46442), (132, 46487),

Gene: Phatniss_70 Start: 44948, Stop: 45922, Start Num: 24

Candidate Starts for Phatniss_70:

(Start: 24 @44948 has 59 MA's), (Start: 39 @45053 has 1 MA's), (40, 45056), (46, 45122), (54, 45170), (67, 45266), (69, 45272), (70, 45278), (74, 45299), (76, 45314), (78, 45326), (79, 45329), (87, 45389), (88, 45395), (101, 45464), (111, 45548), (137, 45788), (141, 45866), (146, 45905), (148, 45911),

Gene: Philus_77 Start: 48475, Stop: 49434, Start Num: 24

Candidate Starts for Philus_77:

(Start: 24 @48475 has 59 MA's), (Start: 39 @48580 has 1 MA's), (46, 48649), (54, 48697), (67, 48793), (69, 48799), (70, 48805), (74, 48826), (76, 48841), (78, 48853), (79, 48856), (80, 48865), (87, 48916), (88, 48922), (101, 48991), (111, 49063), (135, 49279), (144, 49417),

Gene: Phlop_59 Start: 45622, Stop: 46785, Start Num: 26

Candidate Starts for Phlop_59:

(Start: 26 @45622 has 35 MA's), (47, 45793), (56, 45847), (61, 45892), (73, 45955), (100, 46066), (118, 46201), (123, 46246), (156, 46702),

Gene: PinkCoffee_63 Start: 45481, Stop: 46791, Start Num: 26

Candidate Starts for PinkCoffee_63:

(10, 45241), (12, 45316), (Start: 26 @45481 has 35 MA's), (30, 45508), (33, 45523), (35, 45547), (36, 45565), (50, 45685), (88, 45934), (91, 45946), (92, 45955), (97, 45970), (105, 46048), (109, 46096), (112, 46162), (115, 46210), (119, 46234), (122, 46270), (156, 46723),

Gene: Pipp_74 Start: 44920, Stop: 46008, Start Num: 27

Candidate Starts for Pipp_74:

(Start: 27 @44920 has 21 MA's), (32, 44953), (Start: 39 @45010 has 1 MA's), (44, 45061), (46, 45082), (47, 45100), (54, 45139), (58, 45184), (60, 45190), (61, 45202), (64, 45217), (77, 45292), (78, 45295), (84, 45316), (107, 45460), (129, 45595), (154, 45952),

Gene: Pippy_71 Start: 45549, Stop: 46523, Start Num: 24

Candidate Starts for Pippy_71:

(Start: 24 @45549 has 59 MA's), (Start: 39 @45654 has 1 MA's), (46, 45723), (67, 45867), (69, 45873), (70, 45879), (74, 45900), (76, 45915), (78, 45927), (79, 45930), (87, 45990), (88, 45996), (101, 46065), (111, 46149), (137, 46389), (141, 46467), (146, 46506), (148, 46512),

Gene: Portcullis_63 Start: 45750, Stop: 46913, Start Num: 26

Candidate Starts for Portcullis_63:

(Start: 26 @45750 has 35 MA's), (47, 45921), (56, 45975), (61, 46020), (73, 46083), (100, 46194), (118, 46329), (156, 46830),

Gene: PrincePatrick_71 Start: 42744, Stop: 43751, Start Num: 28

Candidate Starts for PrincePatrick_71:

(Start: 28 @42744 has 16 MA's), (42, 42870), (49, 42930), (54, 42951), (57, 42972), (58, 42996), (59, 42999), (60, 43002), (70, 43059), (76, 43095), (89, 43149), (98, 43185), (101, 43215), (106, 43251), (108, 43275), (109, 43281), (113, 43311), (117, 43335), (142, 43659), (149, 43704),

Gene: Priscilla_72 Start: 46350, Stop: 47312, Start Num: 24

Candidate Starts for Priscilla_72:

(Start: 24 @46350 has 59 MA's), (Start: 39 @46455 has 1 MA's), (46, 46524), (67, 46668), (69, 46674), (70, 46680), (74, 46701), (76, 46716), (78, 46728), (79, 46731), (80, 46740), (87, 46791), (88, 46797), (101, 46866), (111, 46938), (131, 47064), (137, 47178), (140, 47235), (141, 47256), (146, 47295), (148, 47301), (150, 47307),

Gene: PullumCavea_60 Start: 45660, Stop: 46961, Start Num: 26

Candidate Starts for PullumCavea_60:

(10, 45420), (12, 45495), (Start: 26 @45660 has 35 MA's), (30, 45687), (33, 45702), (35, 45726), (36, 45744), (50, 45864), (77, 46038), (88, 46113), (91, 46125), (92, 46134), (105, 46227), (115, 46314), (119, 46338), (122, 46374), (124, 46383), (156, 46911),

Gene: QuickMath_73 Start: 45705, Stop: 46664, Start Num: 24

Candidate Starts for QuickMath_73:

(Start: 24 @45705 has 59 MA's), (34, 45774), (Start: 39 @45810 has 1 MA's), (46, 45879), (55, 45939), (64, 46005), (67, 46023), (69, 46029), (70, 46035), (74, 46056), (76, 46071), (78, 46083), (79, 46086), (80, 46095), (87, 46146), (94, 46179), (97, 46188), (135, 46509), (144, 46647),

Gene: RogerDodger_64 Start: 45782, Stop: 47083, Start Num: 26

Candidate Starts for RogerDodger_64:

(10, 45542), (12, 45617), (Start: 26 @45782 has 35 MA's), (30, 45809), (33, 45824), (35, 45848), (36, 45866), (50, 45986), (77, 46160), (88, 46235), (91, 46247), (92, 46256), (105, 46349), (115, 46436), (119, 46460), (122, 46496), (124, 46505), (156, 47033),

Gene: Ruthy_69 Start: 48108, Stop: 49112, Start Num: 25

Candidate Starts for Ruthy_69:

(Start: 25 @48108 has 1 MA's), (30, 48141), (Start: 39 @48210 has 1 MA's), (55, 48339), (57, 48348), (67, 48423), (69, 48429), (70, 48435), (77, 48480), (78, 48483), (79, 48486), (94, 48549), (101, 48591), (114, 48678),

Gene: Saal_74 Start: 47528, Stop: 48487, Start Num: 24

Candidate Starts for Saal_74:

(Start: 24 @47528 has 59 MA's), (Start: 39 @47633 has 1 MA's), (46, 47702), (54, 47750), (67, 47846), (69, 47852), (70, 47858), (74, 47879), (76, 47894), (78, 47906), (79, 47909), (80, 47918), (87, 47969), (88, 47975), (101, 48044), (111, 48116), (135, 48332), (144, 48470),

Gene: Salvador_60 Start: 45173, Stop: 46321, Start Num: 26

Candidate Starts for Salvador_60:

(Start: 26 @45173 has 35 MA's), (47, 45344), (56, 45398), (61, 45443), (73, 45506), (100, 45617), (118, 45752), (123, 45797), (156, 46253),

Gene: Sampson_56 Start: 45644, Stop: 46627, Start Num: 26

Candidate Starts for Sampson_56:

(Start: 26 @45644 has 35 MA's), (47, 45815), (58, 45896), (60, 45902), (61, 45914), (64, 45929), (65, 45932), (68, 45950), (102, 46100), (120, 46223), (124, 46244),

Gene: Savbucketdawg_60 Start: 45314, Stop: 46627, Start Num: 26

Candidate Starts for Savbucketdawg_60:

(6, 45041), (8, 45047), (10, 45074), (12, 45149), (Start: 26 @45314 has 35 MA's), (30, 45341), (33, 45356), (35, 45380), (36, 45398), (60, 45590), (77, 45692), (88, 45767), (91, 45779), (92, 45788), (105, 45881), (115, 45968), (119, 45992), (122, 46028), (124, 46037), (138, 46322), (156, 46565),

Gene: Scioto_57 Start: 45700, Stop: 46683, Start Num: 26

Candidate Starts for Scioto_57:

(Start: 26 @45700 has 35 MA's), (47, 45871), (58, 45952), (60, 45958), (61, 45970), (64, 45985), (65, 45988), (68, 46006), (102, 46156), (120, 46279), (124, 46300),

Gene: Shinji_60 Start: 45260, Stop: 46492, Start Num: 26

Candidate Starts for Shinji_60:

(10, 45020), (12, 45095), (Start: 26 @45260 has 35 MA's), (30, 45287), (33, 45302), (35, 45326), (36, 45344), (50, 45464), (88, 45713), (91, 45725), (92, 45734), (105, 45827), (115, 45914), (119, 45938), (122, 45974), (156, 46427),

Gene: SmokingBunny_61 Start: 45692, Stop: 46921, Start Num: 26

Candidate Starts for SmokingBunny_61:

(10, 45452), (12, 45527), (Start: 26 @45692 has 35 MA's), (30, 45719), (33, 45734), (35, 45758), (36, 45776), (50, 45896), (88, 46145), (91, 46157), (92, 46166), (105, 46259), (115, 46346), (119, 46370), (122, 46406), (156, 46859),

Gene: Soul22_78 Start: 45263, Stop: 46222, Start Num: 24

Candidate Starts for Soul22_78:

(Start: 24 @45263 has 59 MA's), (34, 45332), (Start: 39 @45368 has 1 MA's), (46, 45437), (55, 45497), (64, 45563), (67, 45581), (69, 45587), (70, 45593), (74, 45614), (76, 45629), (78, 45641), (79, 45644), (80, 45653), (87, 45704), (94, 45737), (97, 45746), (135, 46067), (144, 46205),

Gene: Spoonbill_72 Start: 44820, Stop: 45779, Start Num: 24

Candidate Starts for Spoonbill_72:

(Start: 24 @44820 has 59 MA's), (Start: 39 @44925 has 1 MA's), (46, 44994), (54, 45042), (67, 45138), (69, 45144), (70, 45150), (74, 45171), (76, 45186), (78, 45198), (79, 45201), (80, 45210), (87, 45261), (88, 45267), (101, 45336), (111, 45408), (135, 45624), (144, 45762),

Gene: SuperGrey_75 Start: 48629, Stop: 49603, Start Num: 24

Candidate Starts for SuperGrey_75:

(19, 48584), (20, 48590), (Start: 24 @48629 has 59 MA's), (Start: 39 @48734 has 1 MA's), (40, 48737), (46, 48803), (67, 48947), (69, 48953), (70, 48959), (74, 48980), (76, 48995), (78, 49007), (79, 49010), (87, 49070), (88, 49076), (101, 49145), (111, 49229), (137, 49469), (141, 49547), (146, 49586), (148, 49592),

Gene: SwagPiggett_78 Start: 48569, Stop: 49531, Start Num: 24

Candidate Starts for SwagPiggett_78:

(Start: 24 @48569 has 59 MA's), (Start: 39 @48674 has 1 MA's), (46, 48743), (67, 48887), (69, 48893), (70, 48899), (74, 48920), (76, 48935), (78, 48947), (79, 48950), (80, 48959), (87, 49010), (88, 49016), (101, 49085), (111, 49157), (131, 49283), (137, 49397), (140, 49454), (141, 49475), (146, 49514), (148, 49520), (150, 49526),

Gene: Taptic_56 Start: 45202, Stop: 45942, Start Num: 28

Candidate Starts for Taptic_56:

(Start: 28 @45202 has 16 MA's), (32, 45232), (35, 45259), (38, 45286), (42, 45325), (44, 45340), (45, 45343), (51, 45388), (53, 45403), (54, 45406), (56, 45424), (58, 45451), (61, 45469), (62, 45475), (63, 45484), (71, 45517), (72, 45529), (75, 45544), (76, 45550), (77, 45559), (78, 45562), (82, 45583), (96, 45616), (98, 45622), (128, 45838), (132, 45883),

Gene: Tardus_58 Start: 45401, Stop: 46384, Start Num: 26

Candidate Starts for Tardus_58:

(18, 45329), (Start: 26 @45401 has 35 MA's), (47, 45572), (60, 45659), (61, 45671), (64, 45686), (65, 45689), (68, 45707), (102, 45857), (124, 46001),

Gene: TillyBobJoe_61 Start: 45479, Stop: 46780, Start Num: 26

Candidate Starts for TillyBobJoe_61:

(10, 45239), (12, 45314), (Start: 26 @45479 has 35 MA's), (30, 45506), (33, 45521), (35, 45545), (36, 45563), (50, 45683), (77, 45857), (88, 45932), (91, 45944), (92, 45953), (105, 46046), (115, 46133), (119, 46157), (122, 46193), (124, 46202), (156, 46730),

Gene: Toast_70 Start: 43685, Stop: 44692, Start Num: 28

Candidate Starts for Toast_70:

(Start: 28 @43685 has 16 MA's), (42, 43811), (49, 43871), (54, 43892), (57, 43913), (58, 43937), (59, 43940), (60, 43943), (70, 44000), (76, 44036), (77, 44045), (81, 44063), (101, 44156), (108, 44216), (109, 44222), (113, 44252), (117, 44276), (149, 44645),

Gene: Togo_60 Start: 45692, Stop: 46921, Start Num: 26

Candidate Starts for Togo_60:

(10, 45452), (12, 45527), (Start: 26 @45692 has 35 MA's), (30, 45719), (33, 45734), (35, 45758), (36, 45776), (50, 45896), (88, 46145), (91, 46157), (92, 46166), (105, 46259), (115, 46346), (119, 46370), (122, 46406), (156, 46859),

Gene: Tootsieroll_73 Start: 47758, Stop: 48720, Start Num: 24

Candidate Starts for Tootsieroll_73:

(Start: 24 @47758 has 59 MA's), (Start: 39 @47863 has 1 MA's), (46, 47932), (67, 48076), (69, 48082), (70, 48088), (74, 48109), (76, 48124), (78, 48136), (79, 48139), (87, 48199), (88, 48205), (101, 48274), (131, 48472), (137, 48586), (140, 48643), (141, 48664), (146, 48703), (148, 48709), (150, 48715),

Gene: Tortellini_70 Start: 45649, Stop: 46725, Start Num: 24

Candidate Starts for Tortellini_70:

(Start: 24 @45649 has 59 MA's), (31, 45688), (Start: 39 @45751 has 1 MA's), (46, 45820), (54, 45868), (67, 45964), (69, 45970), (70, 45976), (76, 46012), (78, 46024), (79, 46027), (80, 46036), (87, 46087), (132, 46426), (134, 46477), (139, 46585), (152, 46687),

Gene: Totinger_73 Start: 44843, Stop: 45817, Start Num: 24

Candidate Starts for Totinger_73:

(19, 44798), (20, 44804), (Start: 24 @44843 has 59 MA's), (Start: 39 @44948 has 1 MA's), (40, 44951), (46, 45017), (67, 45161), (69, 45167), (70, 45173), (74, 45194), (76, 45209), (78, 45221), (79, 45224), (87, 45284), (88, 45290), (101, 45359), (111, 45443), (137, 45683), (141, 45761), (146, 45800), (148, 45806),

Gene: Twister6_63 Start: 45452, Stop: 46681, Start Num: 26

Candidate Starts for Twister6_63:

(Start: 26 @45452 has 35 MA's), (47, 45623), (56, 45677), (61, 45722), (73, 45785), (100, 45896), (118, 46031), (156, 46604),

Gene: UncleRicky_72 Start: 45196, Stop: 46170, Start Num: 24

Candidate Starts for UncleRicky_72:

(Start: 24 @45196 has 59 MA's), (Start: 39 @45301 has 1 MA's), (40, 45304), (46, 45370), (54, 45418), (67, 45514), (69, 45520), (70, 45526), (74, 45547), (76, 45562), (78, 45574), (79, 45577), (87, 45637), (88, 45643), (101, 45712), (111, 45796), (137, 46036), (141, 46114), (146, 46153), (148, 46159),

Gene: Utz_62 Start: 43338, Stop: 44426, Start Num: 27

Candidate Starts for Utz_62:

(Start: 27 @43338 has 21 MA's), (32, 43371), (Start: 39 @43428 has 1 MA's), (41, 43449), (44, 43479), (46, 43500), (47, 43518), (54, 43557), (58, 43602), (60, 43608), (61, 43620), (64, 43635), (77, 43710), (78, 43713), (84, 43734), (103, 43818), (107, 43878), (121, 43971), (127, 44004), (129, 44013), (153, 44325), (154, 44370),

Gene: Valary_62 Start: 46280, Stop: 47530, Start Num: 26

Candidate Starts for Valary_62:

(1, 45695), (2, 45818), (5, 46010), (7, 46016), (10, 46040), (12, 46115), (Start: 26 @46280 has 35 MA's), (30, 46307), (33, 46322), (35, 46346), (36, 46364), (50, 46484), (77, 46658), (88, 46733), (91, 46745), (92, 46754), (105, 46847), (115, 46934), (119, 46958), (122, 46994), (156, 47447),

Gene: VanDeWege_63 Start: 45620, Stop: 46870, Start Num: 26

Candidate Starts for VanDeWege_63:

(2, 45158), (5, 45350), (7, 45356), (10, 45380), (12, 45455), (Start: 26 @45620 has 35 MA's), (30, 45647), (33, 45662), (35, 45686), (36, 45704), (50, 45824), (88, 46073), (91, 46085), (92, 46094), (105, 46187), (115, 46274), (119, 46298), (122, 46334), (156, 46787),

Gene: Veteran_67 Start: 45615, Stop: 46574, Start Num: 24

Candidate Starts for Veteran_67:

(Start: 24 @45615 has 59 MA's), (34, 45684), (Start: 39 @45720 has 1 MA's), (46, 45789), (55, 45849), (64, 45915), (67, 45933), (69, 45939), (70, 45945), (74, 45966), (76, 45981), (78, 45993), (79, 45996), (80, 46005), (87, 46056), (94, 46089), (97, 46098), (135, 46419), (144, 46557),

Gene: ViaConlectus_56 Start: 44353, Stop: 45336, Start Num: 26

Candidate Starts for ViaConlectus_56:

(Start: 26 @44353 has 35 MA's), (47, 44524), (60, 44611), (61, 44623), (64, 44638), (65, 44641), (68, 44659), (102, 44809), (124, 44953),

Gene: Walrus_69 Start: 44050, Stop: 45015, Start Num: 26

Candidate Starts for Walrus_69:

(22, 44035), (Start: 26 @44050 has 35 MA's), (47, 44221), (60, 44308), (61, 44320), (64, 44335), (68, 44356), (73, 44383), (85, 44434), (93, 44458), (118, 44590), (136, 44785), (143, 44914), (151, 44959),

Gene: Whack_64 Start: 42261, Stop: 43319, Start Num: 28

Candidate Starts for Whack_64:

(17, 42162), (Start: 28 @42261 has 16 MA's), (67, 42564), (70, 42576), (82, 42645), (89, 42666),

Gene: Whouxphf_71 Start: 46328, Stop: 47290, Start Num: 24

Candidate Starts for Whouxphf_71:

(Start: 24 @46328 has 59 MA's), (Start: 39 @46433 has 1 MA's), (46, 46502), (64, 46628), (67, 46646), (69, 46652), (70, 46658), (74, 46679), (76, 46694), (78, 46706), (79, 46709), (87, 46769), (88, 46775), (101, 46844), (111, 46916), (131, 47042), (137, 47156), (140, 47213), (141, 47234), (146, 47273), (148, 47279), (150, 47285),

Gene: WillSterrel_75 Start: 47204, Stop: 48166, Start Num: 24

Candidate Starts for WillSterrel_75:

(Start: 24 @47204 has 59 MA's), (34, 47273), (Start: 39 @47309 has 1 MA's), (40, 47312), (46, 47378), (54, 47426), (67, 47522), (69, 47528), (70, 47534), (74, 47555), (76, 47570), (78, 47582), (79, 47585), (80, 47594), (87, 47645), (88, 47651), (101, 47720), (131, 47918), (137, 48032), (140, 48089), (141, 48110), (146, 48149), (148, 48155), (150, 48161),

Gene: William_73 Start: 45092, Stop: 46099, Start Num: 28

Candidate Starts for William_73:

(Start: 28 @45092 has 16 MA's), (42, 45218), (49, 45278), (54, 45299), (57, 45320), (58, 45344), (59, 45347), (60, 45350), (70, 45407), (76, 45443), (89, 45497), (98, 45533), (101, 45563), (106, 45599), (108, 45623), (109, 45629), (113, 45659), (117, 45683), (149, 46052),

Gene: Wizard_59 Start: 45526, Stop: 46776, Start Num: 26

Candidate Starts for Wizard_59:

(2, 45064), (5, 45256), (7, 45262), (10, 45286), (12, 45361), (Start: 26 @45526 has 35 MA's), (30, 45553), (33, 45568), (35, 45592), (36, 45610), (50, 45730), (88, 45979), (91, 45991), (92, 46000), (105, 46093), (115, 46180), (119, 46204), (122, 46240), (156, 46693),

Gene: XFactor_70 Start: 45621, Stop: 46583, Start Num: 24

Candidate Starts for XFactor_70:

(Start: 24 @45621 has 59 MA's), (34, 45690), (Start: 39 @45726 has 1 MA's), (40, 45729), (46, 45795), (54, 45843), (67, 45939), (69, 45945), (70, 45951), (74, 45972), (76, 45987), (78, 45999), (79, 46002), (87, 46062), (88, 46068), (101, 46137), (111, 46209), (131, 46335), (137, 46449), (140, 46506), (141, 46527), (146, 46566), (148, 46572),

Gene: Yorick_72 Start: 47729, Stop: 48703, Start Num: 24

Candidate Starts for Yorick_72:

(Start: 24 @47729 has 59 MA's), (Start: 39 @47834 has 1 MA's), (46, 47903), (54, 47951), (67, 48047), (69, 48053), (70, 48059), (74, 48080), (76, 48095), (78, 48107), (79, 48110), (87, 48170), (88, 48176), (101, 48245), (111, 48329), (137, 48569), (141, 48647), (146, 48686), (148, 48692),

Gene: Yoshi_88 Start: 47666, Stop: 48568, Start Num: 28

Candidate Starts for Yoshi_88:

(21, 47639), (23, 47648), (Start: 28 @47666 has 16 MA's), (34, 47720), (36, 47744), (64, 47951), (67, 47969), (70, 47981), (77, 48026), (78, 48029), (79, 48032), (97, 48104), (101, 48137),

Gene: YungMoney_61 Start: 47609, Stop: 48907, Start Num: 26

Candidate Starts for YungMoney_61:

(10, 47369), (12, 47444), (Start: 26 @47609 has 35 MA's), (30, 47636), (33, 47651), (35, 47675), (36, 47693), (50, 47813), (88, 48062), (91, 48074), (105, 48176), (112, 48290), (119, 48362), (122, 48398), (156, 48851),

Gene: Zapner_83 Start: 45405, Stop: 46364, Start Num: 24

Candidate Starts for Zapner_83:

(Start: 24 @45405 has 59 MA's), (34, 45474), (Start: 39 @45510 has 1 MA's), (46, 45579), (55, 45639), (64, 45705), (67, 45723), (69, 45729), (70, 45735), (74, 45756), (76, 45771), (78, 45783), (79, 45786), (80, 45795), (87, 45846), (94, 45879), (97, 45888), (135, 46209), (144, 46347),

Gene: Zerg_73 Start: 46466, Stop: 47428, Start Num: 24

Candidate Starts for Zerg_73:

(Start: 24 @46466 has 59 MA's), (Start: 39 @46571 has 1 MA's), (46, 46640), (54, 46688), (67, 46784), (69, 46790), (70, 46796), (74, 46817), (76, 46832), (78, 46844), (79, 46847), (80, 46856), (87, 46907), (88, 46913), (101, 46982), (111, 47054), (137, 47294), (140, 47351), (141, 47372), (146, 47411), (148, 47417), (150, 47423),

Gene: ZiggyZoo_71 Start: 45335, Stop: 46423, Start Num: 27

Candidate Starts for ZiggyZoo_71:

(Start: 27 @45335 has 21 MA's), (32, 45368), (Start: 39 @45425 has 1 MA's), (44, 45476), (46, 45497), (52, 45542), (54, 45554), (58, 45599), (60, 45605), (61, 45617), (64, 45632), (77, 45707), (78, 45710), (84, 45731), (107, 45875), (129, 46010), (153, 46322), (154, 46367),

Gene: Zizzle_77 Start: 47857, Stop: 48816, Start Num: 24

Candidate Starts for Zizzle_77:

(Start: 24 @47857 has 59 MA's), (Start: 39 @47962 has 1 MA's), (46, 48031), (54, 48079), (67, 48175), (69, 48181), (70, 48187), (74, 48208), (76, 48223), (78, 48235), (79, 48238), (80, 48247), (87, 48298), (88, 48304), (101, 48373), (111, 48445), (135, 48661), (144, 48799),