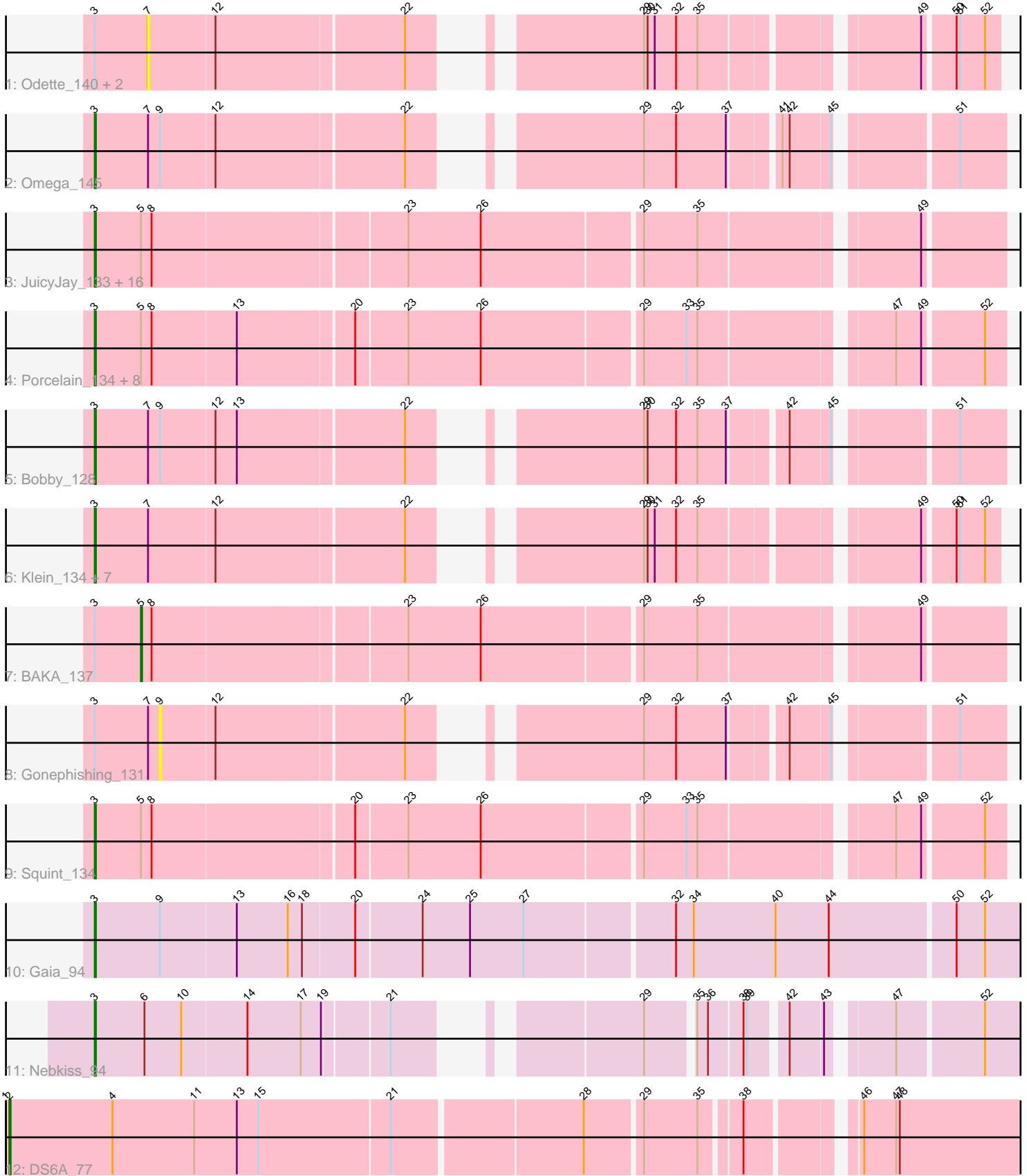


Pham 165129



Note: Tracks are now grouped by subcluster and scaled. Switching in subcluster is indicated by changes in track color. Track scale is now set by default to display the region 30 bp upstream of start 1 to 30 bp downstream of the last possible start. If this default region is judged to be packed too tightly with annotated starts, the track will be further scaled to only show that region of the ORF with annotated starts. This action will be indicated by adding "Zoomed" to the title. For starts, yellow indicates the location of called starts comprised solely of Glimmer/GeneMark auto-annotations, green indicates the location of called starts with at least 1 manual gene annotation.

Pham 165129 Report

This analysis was run 07/09/24 on database version 566.

Pham number 165129 has 45 members, 4 are drafts.

Phages represented in each track:

- Track 1 : Odette_140, Dove_129, Bagrid_137
- Track 2 : Omega_145
- Track 3 : JuicyJay_133, Redno2_129, EricMillard_129, Thibault_121, Dallas_138, Phoebus_137, ThreeRngTarjay_132, Constella_131, NihilNomen_139, Bombitas_125, Beem_139, HokkenD_129, Halley_139, Optimus_128, Hughesyang_136, Yeet_130, Ejimix_130
- Track 4 : Porcelain_134, Hannaconda_129, Courthouse_133, Lucky2013_130, Superphikiman_135, MiaZeal_137, LittleE_140, Ariel_137, KashFlow_134
- Track 5 : Bobby_128
- Track 6 : Klein_134, Duke13_132, Pound_124, Schatzie_132, Kalah2_127, DmpstrDiver_137, Wanda_136, Zelink_131
- Track 7 : BAKA_137
- Track 8 : Gonephishing_131
- Track 9 : Squint_134
- Track 10 : Gaia_94
- Track 11 : Nebkiss_94
- Track 12 : DS6A_77

Summary of Final Annotations (See graph section above for start numbers):

The start number called the most often in the published annotations is 3, it was called in 39 of the 41 non-draft genes in the pham.

Genes that call this "Most Annotated" start:

- Ariel_137, Beem_139, Bobby_128, Bombitas_125, Constella_131, Courthouse_133, Dallas_138, DmpstrDiver_137, Duke13_132, Ejimix_130, EricMillard_129, Gaia_94, Halley_139, Hannaconda_129, HokkenD_129, Hughesyang_136, JuicyJay_133, Kalah2_127, KashFlow_134, Klein_134, LittleE_140, Lucky2013_130, MiaZeal_137, Nebkiss_94, NihilNomen_139, Omega_145, Optimus_128, Phoebus_137, Porcelain_134, Pound_124, Redno2_129, Schatzie_132, Squint_134, Superphikiman_135, Thibault_121, ThreeRngTarjay_132, Wanda_136, Yeet_130, Zelink_131,

Genes that have the "Most Annotated" start but do not call it:

- BAKA_137, Bagrid_137, Dove_129, Gonephishing_131, Odette_140,

Genes that do not have the "Most Annotated" start:

- DS6A_77,

Summary by start number:

Start 2:

- Found in 1 of 45 (2.2%) of genes in pham
- Manual Annotations of this start: 1 of 41
- Called 100.0% of time when present
- Phage (with cluster) where this start called: DS6A_77 (singleton),

Start 3:

- Found in 44 of 45 (97.8%) of genes in pham
- Manual Annotations of this start: 39 of 41
- Called 88.6% of time when present
- Phage (with cluster) where this start called: Ariel_137 (J), Beem_139 (J), Bobby_128 (J), Bombitas_125 (J), Constella_131 (J), Courthouse_133 (J), Dallas_138 (J), DmpstrDiver_137 (J), Duke13_132 (J), Ejimix_130 (J), EricMillard_129 (J), Gaia_94 (X), Halley_139 (J), Hannaconda_129 (J), HokkenD_129 (J), Hughesyang_136 (J), JuicyJay_133 (J), Kalah2_127 (J), KashFlow_134 (J), Klein_134 (J), LittleE_140 (J), Lucky2013_130 (J), MiaZeal_137 (J), Nebkiss_94 (X), NihilNomen_139 (J), Omega_145 (J), Optimus_128 (J), Phoebus_137 (J), Porcelain_134 (J), Pound_124 (J), Redno2_129 (J), Schatzie_132 (J), Squint_134 (J), Superphikiman_135 (J), Thibault_121 (J), ThreeRngTarjay_132 (J), Wanda_136 (J), Yeet_130 (J), Zelink_131 (J),

Start 5:

- Found in 28 of 45 (62.2%) of genes in pham
- Manual Annotations of this start: 1 of 41
- Called 3.6% of time when present
- Phage (with cluster) where this start called: BAKA_137 (J),

Start 7:

- Found in 14 of 45 (31.1%) of genes in pham
- No Manual Annotations of this start.
- Called 21.4% of time when present
- Phage (with cluster) where this start called: Bagrid_137 (J), Dove_129 (J), Odette_140 (J),

Start 9:

- Found in 4 of 45 (8.9%) of genes in pham
- No Manual Annotations of this start.
- Called 25.0% of time when present
- Phage (with cluster) where this start called: Gonephishing_131 (J),

Summary by clusters:

There are 3 clusters represented in this pham: X, singleton, J,

Info for manual annotations of cluster J:

- Start number 3 was manually annotated 37 times for cluster J.

- Start number 5 was manually annotated 1 time for cluster J.

Info for manual annotations of cluster X:

- Start number 3 was manually annotated 2 times for cluster X.

Gene Information:

Gene: Ariel_137 Start: 71246, Stop: 71965, Start Num: 3

Candidate Starts for Ariel_137:

(Start: 3 @71246 has 39 MA's), (Start: 5 @71285 has 1 MA's), (8, 71294), (13, 71363), (20, 71456), (23, 71498), (26, 71558), (29, 71687), (33, 71723), (35, 71732), (47, 71879), (49, 71900), (52, 71948),

Gene: BAKA_137 Start: 73847, Stop: 74527, Start Num: 5

Candidate Starts for BAKA_137:

(Start: 3 @73808 has 39 MA's), (Start: 5 @73847 has 1 MA's), (8, 73856), (23, 74060), (26, 74120), (29, 74249), (35, 74294), (49, 74462),

Gene: Bagrid_137 Start: 73967, Stop: 74575, Start Num: 7

Candidate Starts for Bagrid_137:

(Start: 3 @73922 has 39 MA's), (7, 73967), (12, 74021), (22, 74174), (29, 74312), (30, 74315), (31, 74321), (32, 74339), (35, 74357), (49, 74516), (50, 74540), (51, 74543), (52, 74564),

Gene: Beem_139 Start: 75406, Stop: 76125, Start Num: 3

Candidate Starts for Beem_139:

(Start: 3 @75406 has 39 MA's), (Start: 5 @75445 has 1 MA's), (8, 75454), (23, 75658), (26, 75718), (29, 75847), (35, 75892), (49, 76060),

Gene: Bobby_128 Start: 75505, Stop: 76164, Start Num: 3

Candidate Starts for Bobby_128:

(Start: 3 @75505 has 39 MA's), (7, 75550), (9, 75559), (12, 75604), (13, 75622), (22, 75757), (29, 75895), (30, 75898), (32, 75922), (35, 75940), (37, 75964), (42, 76006), (45, 76039), (51, 76126),

Gene: Bombitas_125 Start: 72817, Stop: 73536, Start Num: 3

Candidate Starts for Bombitas_125:

(Start: 3 @72817 has 39 MA's), (Start: 5 @72856 has 1 MA's), (8, 72865), (23, 73069), (26, 73129), (29, 73258), (35, 73303), (49, 73471),

Gene: Constella_131 Start: 74059, Stop: 74778, Start Num: 3

Candidate Starts for Constella_131:

(Start: 3 @74059 has 39 MA's), (Start: 5 @74098 has 1 MA's), (8, 74107), (23, 74311), (26, 74371), (29, 74500), (35, 74545), (49, 74713),

Gene: Courthouse_133 Start: 71104, Stop: 71823, Start Num: 3

Candidate Starts for Courthouse_133:

(Start: 3 @71104 has 39 MA's), (Start: 5 @71143 has 1 MA's), (8, 71152), (13, 71221), (20, 71314), (23, 71356), (26, 71416), (29, 71545), (33, 71581), (35, 71590), (47, 71737), (49, 71758), (52, 71806),

Gene: DS6A_77 Start: 50506, Stop: 51303, Start Num: 2

Candidate Starts for DS6A_77:

(1, 50503), (Start: 2 @50506 has 1 MA's), (4, 50593), (11, 50662), (13, 50698), (15, 50716), (21, 50824), (28, 50977), (29, 51022), (35, 51067), (38, 51097), (46, 51175), (47, 51202), (48, 51205),

Gene: Dallas_138 Start: 74873, Stop: 75592, Start Num: 3

Candidate Starts for Dallas_138:

(Start: 3 @74873 has 39 MA's), (Start: 5 @74912 has 1 MA's), (8, 74921), (23, 75125), (26, 75185), (29, 75314), (35, 75359), (49, 75527),

Gene: DmpstrDiver_137 Start: 74211, Stop: 74864, Start Num: 3

Candidate Starts for DmpstrDiver_137:

(Start: 3 @74211 has 39 MA's), (7, 74256), (12, 74310), (22, 74463), (29, 74601), (30, 74604), (31, 74610), (32, 74628), (35, 74646), (49, 74805), (50, 74829), (51, 74832), (52, 74853),

Gene: Dove_129 Start: 69855, Stop: 70463, Start Num: 7

Candidate Starts for Dove_129:

(Start: 3 @69810 has 39 MA's), (7, 69855), (12, 69909), (22, 70062), (29, 70200), (30, 70203), (31, 70209), (32, 70227), (35, 70245), (49, 70404), (50, 70428), (51, 70431), (52, 70452),

Gene: Duke13_132 Start: 71512, Stop: 72165, Start Num: 3

Candidate Starts for Duke13_132:

(Start: 3 @71512 has 39 MA's), (7, 71557), (12, 71611), (22, 71764), (29, 71902), (30, 71905), (31, 71911), (32, 71929), (35, 71947), (49, 72106), (50, 72130), (51, 72133), (52, 72154),

Gene: Ejimix_130 Start: 74941, Stop: 75660, Start Num: 3

Candidate Starts for Ejimix_130:

(Start: 3 @74941 has 39 MA's), (Start: 5 @74980 has 1 MA's), (8, 74989), (23, 75193), (26, 75253), (29, 75382), (35, 75427), (49, 75595),

Gene: EricMillard_129 Start: 73445, Stop: 74164, Start Num: 3

Candidate Starts for EricMillard_129:

(Start: 3 @73445 has 39 MA's), (Start: 5 @73484 has 1 MA's), (8, 73493), (23, 73697), (26, 73757), (29, 73886), (35, 73931), (49, 74099),

Gene: Gaia_94 Start: 56162, Stop: 56917, Start Num: 3

Candidate Starts for Gaia_94:

(Start: 3 @56162 has 39 MA's), (9, 56216), (13, 56279), (16, 56321), (18, 56333), (20, 56375), (24, 56429), (25, 56468), (27, 56513), (32, 56633), (34, 56648), (40, 56717), (44, 56762), (50, 56864), (52, 56888),

Gene: Gonephishing_131 Start: 71346, Stop: 71951, Start Num: 9

Candidate Starts for Gonephishing_131:

(Start: 3 @71292 has 39 MA's), (7, 71337), (9, 71346), (12, 71391), (22, 71544), (29, 71682), (32, 71709), (37, 71751), (42, 71793), (45, 71826), (51, 71913),

Gene: Halley_139 Start: 75257, Stop: 75976, Start Num: 3

Candidate Starts for Halley_139:

(Start: 3 @75257 has 39 MA's), (Start: 5 @75296 has 1 MA's), (8, 75305), (23, 75509), (26, 75569), (29, 75698), (35, 75743), (49, 75911),

Gene: Hannaconda_129 Start: 71259, Stop: 71978, Start Num: 3

Candidate Starts for Hannaconda_129:

(Start: 3 @71259 has 39 MA's), (Start: 5 @71298 has 1 MA's), (8, 71307), (13, 71376), (20, 71469), (23, 71511), (26, 71571), (29, 71700), (33, 71736), (35, 71745), (47, 71892), (49, 71913), (52, 71961),

Gene: HokkenD_129 Start: 74141, Stop: 74860, Start Num: 3

Candidate Starts for HokkenD_129:

(Start: 3 @74141 has 39 MA's), (Start: 5 @74180 has 1 MA's), (8, 74189), (23, 74393), (26, 74453), (29, 74582), (35, 74627), (49, 74795),

Gene: Hughesyang_136 Start: 75027, Stop: 75746, Start Num: 3

Candidate Starts for Hughesyang_136:

(Start: 3 @75027 has 39 MA's), (Start: 5 @75066 has 1 MA's), (8, 75075), (23, 75279), (26, 75339), (29, 75468), (35, 75513), (49, 75681),

Gene: JuicyJay_133 Start: 76542, Stop: 77261, Start Num: 3

Candidate Starts for JuicyJay_133:

(Start: 3 @76542 has 39 MA's), (Start: 5 @76581 has 1 MA's), (8, 76590), (23, 76794), (26, 76854), (29, 76983), (35, 77028), (49, 77196),

Gene: Kalah2_127 Start: 73567, Stop: 74220, Start Num: 3

Candidate Starts for Kalah2_127:

(Start: 3 @73567 has 39 MA's), (7, 73612), (12, 73666), (22, 73819), (29, 73957), (30, 73960), (31, 73966), (32, 73984), (35, 74002), (49, 74161), (50, 74185), (51, 74188), (52, 74209),

Gene: KashFlow_134 Start: 72837, Stop: 73556, Start Num: 3

Candidate Starts for KashFlow_134:

(Start: 3 @72837 has 39 MA's), (Start: 5 @72876 has 1 MA's), (8, 72885), (13, 72954), (20, 73047), (23, 73089), (26, 73149), (29, 73278), (33, 73314), (35, 73323), (47, 73470), (49, 73491), (52, 73539),

Gene: Klein_134 Start: 72169, Stop: 72822, Start Num: 3

Candidate Starts for Klein_134:

(Start: 3 @72169 has 39 MA's), (7, 72214), (12, 72268), (22, 72421), (29, 72559), (30, 72562), (31, 72568), (32, 72586), (35, 72604), (49, 72763), (50, 72787), (51, 72790), (52, 72811),

Gene: LittleE_140 Start: 74088, Stop: 74807, Start Num: 3

Candidate Starts for LittleE_140:

(Start: 3 @74088 has 39 MA's), (Start: 5 @74127 has 1 MA's), (8, 74136), (13, 74205), (20, 74298), (23, 74340), (26, 74400), (29, 74529), (33, 74565), (35, 74574), (47, 74721), (49, 74742), (52, 74790),

Gene: Lucky2013_130 Start: 70965, Stop: 71684, Start Num: 3

Candidate Starts for Lucky2013_130:

(Start: 3 @70965 has 39 MA's), (Start: 5 @71004 has 1 MA's), (8, 71013), (13, 71082), (20, 71175), (23, 71217), (26, 71277), (29, 71406), (33, 71442), (35, 71451), (47, 71598), (49, 71619), (52, 71667),

Gene: MiaZeal_137 Start: 72104, Stop: 72823, Start Num: 3

Candidate Starts for MiaZeal_137:

(Start: 3 @72104 has 39 MA's), (Start: 5 @72143 has 1 MA's), (8, 72152), (13, 72221), (20, 72314), (23, 72356), (26, 72416), (29, 72545), (33, 72581), (35, 72590), (47, 72737), (49, 72758), (52, 72806),

Gene: Nebkiss_94 Start: 55185, Stop: 55841, Start Num: 3

Candidate Starts for Nebkiss_94:

(Start: 3 @55185 has 39 MA's), (6, 55227), (10, 55257), (14, 55311), (17, 55356), (19, 55371), (21, 55422), (29, 55569), (35, 55605), (36, 55614), (38, 55641), (39, 55644), (42, 55671), (43, 55698), (47, 55743), (52, 55812),

Gene: NihilNomen_139 Start: 74487, Stop: 75206, Start Num: 3

Candidate Starts for NihilNomen_139:

(Start: 3 @74487 has 39 MA's), (Start: 5 @74526 has 1 MA's), (8, 74535), (23, 74739), (26, 74799), (29, 74928), (35, 74973), (49, 75141),

Gene: Odette_140 Start: 76094, Stop: 76702, Start Num: 7

Candidate Starts for Odette_140:

(Start: 3 @76049 has 39 MA's), (7, 76094), (12, 76148), (22, 76301), (29, 76439), (30, 76442), (31, 76448), (32, 76466), (35, 76484), (49, 76643), (50, 76667), (51, 76670), (52, 76691),

Gene: Omega_145 Start: 75633, Stop: 76292, Start Num: 3

Candidate Starts for Omega_145:

(Start: 3 @75633 has 39 MA's), (7, 75678), (9, 75687), (12, 75732), (22, 75885), (29, 76023), (32, 76050), (37, 76092), (41, 76128), (42, 76134), (45, 76167), (51, 76254),

Gene: Optimus_128 Start: 71767, Stop: 72486, Start Num: 3

Candidate Starts for Optimus_128:

(Start: 3 @71767 has 39 MA's), (Start: 5 @71806 has 1 MA's), (8, 71815), (23, 72019), (26, 72079), (29, 72208), (35, 72253), (49, 72421),

Gene: Phoebus_137 Start: 76381, Stop: 77100, Start Num: 3

Candidate Starts for Phoebus_137:

(Start: 3 @76381 has 39 MA's), (Start: 5 @76420 has 1 MA's), (8, 76429), (23, 76633), (26, 76693), (29, 76822), (35, 76867), (49, 77035),

Gene: Porcelain_134 Start: 71911, Stop: 72630, Start Num: 3

Candidate Starts for Porcelain_134:

(Start: 3 @71911 has 39 MA's), (Start: 5 @71950 has 1 MA's), (8, 71959), (13, 72028), (20, 72121), (23, 72163), (26, 72223), (29, 72352), (33, 72388), (35, 72397), (47, 72544), (49, 72565), (52, 72613),

Gene: Pound_124 Start: 72498, Stop: 73151, Start Num: 3

Candidate Starts for Pound_124:

(Start: 3 @72498 has 39 MA's), (7, 72543), (12, 72597), (22, 72750), (29, 72888), (30, 72891), (31, 72897), (32, 72915), (35, 72933), (49, 73092), (50, 73116), (51, 73119), (52, 73140),

Gene: Redno2_129 Start: 71769, Stop: 72488, Start Num: 3

Candidate Starts for Redno2_129:

(Start: 3 @71769 has 39 MA's), (Start: 5 @71808 has 1 MA's), (8, 71817), (23, 72021), (26, 72081), (29, 72210), (35, 72255), (49, 72423),

Gene: Schatzie_132 Start: 74468, Stop: 75121, Start Num: 3

Candidate Starts for Schatzie_132:

(Start: 3 @74468 has 39 MA's), (7, 74513), (12, 74567), (22, 74720), (29, 74858), (30, 74861), (31, 74867), (32, 74885), (35, 74903), (49, 75062), (50, 75086), (51, 75089), (52, 75110),

Gene: Squint_134 Start: 72170, Stop: 72889, Start Num: 3

Candidate Starts for Squint_134:

(Start: 3 @72170 has 39 MA's), (Start: 5 @72209 has 1 MA's), (8, 72218), (20, 72380), (23, 72422), (26, 72482), (29, 72611), (33, 72647), (35, 72656), (47, 72803), (49, 72824), (52, 72872),

Gene: Superphikiman_135 Start: 71386, Stop: 72105, Start Num: 3

Candidate Starts for Superphikiman_135:

(Start: 3 @71386 has 39 MA's), (Start: 5 @71425 has 1 MA's), (8, 71434), (13, 71503), (20, 71596), (23, 71638), (26, 71698), (29, 71827), (33, 71863), (35, 71872), (47, 72019), (49, 72040), (52, 72088),

Gene: Thibault_121 Start: 71691, Stop: 72410, Start Num: 3

Candidate Starts for Thibault_121:

(Start: 3 @71691 has 39 MA's), (Start: 5 @71730 has 1 MA's), (8, 71739), (23, 71943), (26, 72003), (29, 72132), (35, 72177), (49, 72345),

Gene: ThreeRngTarjay_132 Start: 74972, Stop: 75691, Start Num: 3

Candidate Starts for ThreeRngTarjay_132:

(Start: 3 @74972 has 39 MA's), (Start: 5 @75011 has 1 MA's), (8, 75020), (23, 75224), (26, 75284), (29, 75413), (35, 75458), (49, 75626),

Gene: Wanda_136 Start: 72098, Stop: 72751, Start Num: 3

Candidate Starts for Wanda_136:

(Start: 3 @72098 has 39 MA's), (7, 72143), (12, 72197), (22, 72350), (29, 72488), (30, 72491), (31, 72497), (32, 72515), (35, 72533), (49, 72692), (50, 72716), (51, 72719), (52, 72740),

Gene: Yeet_130 Start: 74170, Stop: 74889, Start Num: 3

Candidate Starts for Yeet_130:

(Start: 3 @74170 has 39 MA's), (Start: 5 @74209 has 1 MA's), (8, 74218), (23, 74422), (26, 74482), (29, 74611), (35, 74656), (49, 74824),

Gene: Zelink_131 Start: 74910, Stop: 75563, Start Num: 3

Candidate Starts for Zelink_131:

(Start: 3 @74910 has 39 MA's), (7, 74955), (12, 75009), (22, 75162), (29, 75300), (30, 75303), (31, 75309), (32, 75327), (35, 75345), (49, 75504), (50, 75528), (51, 75531), (52, 75552),