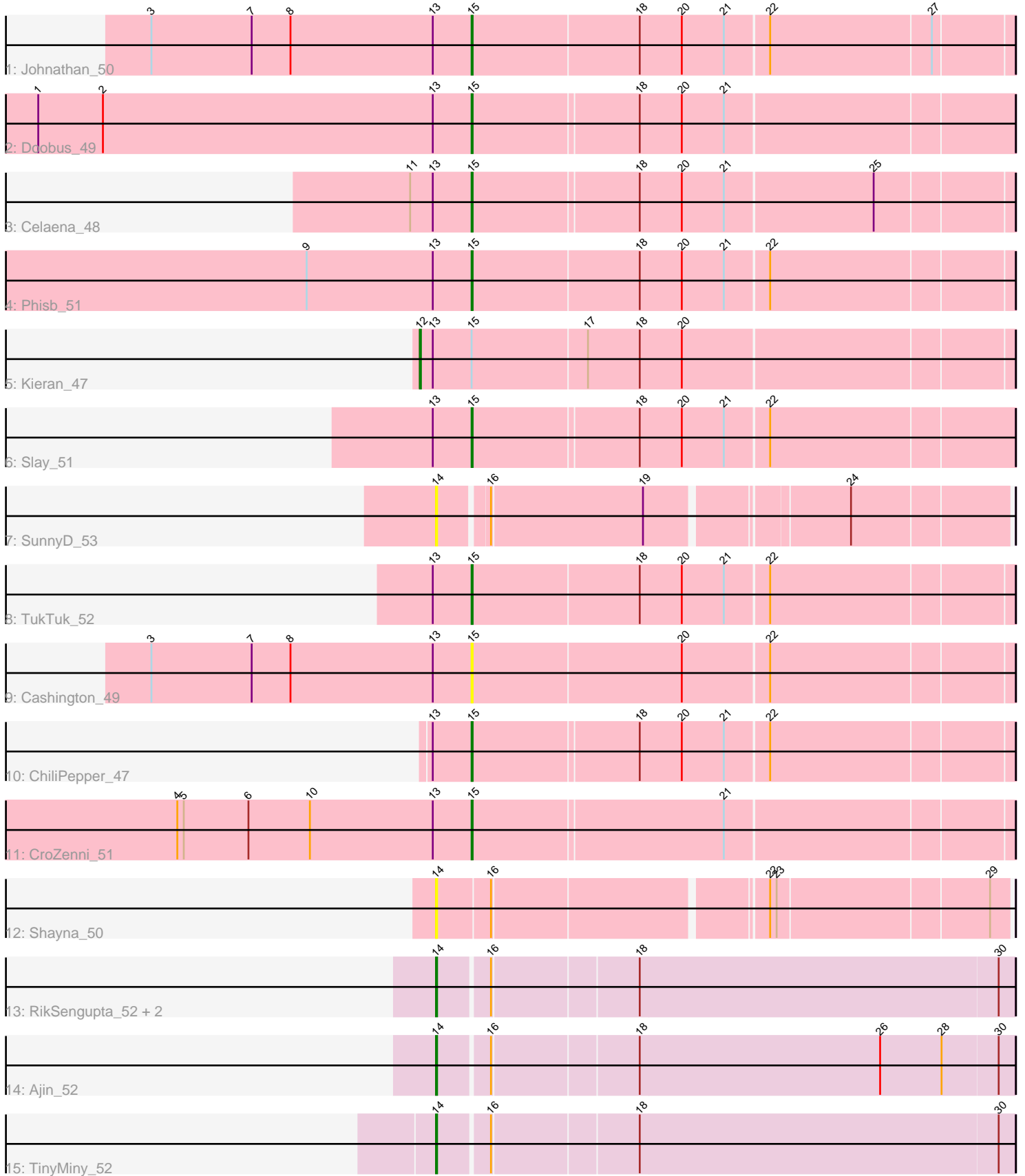


Pham 165350



Note: Tracks are now grouped by subcluster and scaled. Switching in subcluster is indicated by changes in track color. Track scale is now set by default to display the region 30 bp upstream of start 1 to 30 bp downstream of the last possible start. If this default region is judged to be packed too tightly with annotated starts, the track will be further scaled to only show that region of the ORF with annotated starts. This action will be indicated by adding "Zoomed" to the title. For starts, yellow indicates the location of called starts comprised solely of Glimmer/GeneMark auto-annotations, green indicates the location of called starts with at least 1 manual gene annotation.

Pham 165350 Report

This analysis was run 07/09/24 on database version 566.

Pham number 165350 has 17 members, 4 are drafts.

Phages represented in each track:

- Track 1 : Johnathan_50
- Track 2 : Doobus_49
- Track 3 : Celaena_48
- Track 4 : Phisb_51
- Track 5 : Kieran_47
- Track 6 : Slay_51
- Track 7 : SunnyD_53
- Track 8 : TukTuk_52
- Track 9 : Cashington_49
- Track 10 : ChiliPepper_47
- Track 11 : CroZenni_51
- Track 12 : Shayna_50
- Track 13 : RikSengupta_52, Sparcetus_52, Kors_53
- Track 14 : Ajin_52
- Track 15 : TinyMiny_52

Summary of Final Annotations (See graph section above for start numbers):

The start number called the most often in the published annotations is 15, it was called in 8 of the 13 non-draft genes in the pham.

Genes that call this "Most Annotated" start:

- Cashington_49, Celaena_48, ChiliPepper_47, CroZenni_51, Doobus_49, Johnathan_50, Phisb_51, Slay_51, TukTuk_52,

Genes that have the "Most Annotated" start but do not call it:

- Kieran_47,

Genes that do not have the "Most Annotated" start:

- Ajin_52, Kors_53, RikSengupta_52, Shayna_50, Sparcetus_52, SunnyD_53, TinyMiny_52,

Summary by start number:

Start 12:

- Found in 1 of 17 (5.9%) of genes in pham
- Manual Annotations of this start: 1 of 13
- Called 100.0% of time when present
- Phage (with cluster) where this start called: Kieran_47 (EB),

Start 14:

- Found in 7 of 17 (41.2%) of genes in pham
- Manual Annotations of this start: 4 of 13
- Called 100.0% of time when present
- Phage (with cluster) where this start called: Ajin_52 (EF), Kors_53 (EF), RikSengupta_52 (EF), Shayna_50 (EB), Sparcetus_52 (EF), SunnyD_53 (EB), TinyMiny_52 (EF),

Start 15:

- Found in 10 of 17 (58.8%) of genes in pham
- Manual Annotations of this start: 8 of 13
- Called 90.0% of time when present
- Phage (with cluster) where this start called: Cashington_49 (EB), Celaena_48 (EB), ChiliPepper_47 (EB), CroZenni_51 (EB), Doobus_49 (EB), Johnathan_50 (EB), Phisb_51 (EB), Slay_51 (EB), TukTuk_52 (EB),

Summary by clusters:

There are 2 clusters represented in this pham: EF, EB,

Info for manual annotations of cluster EB:

- Start number 12 was manually annotated 1 time for cluster EB.
- Start number 15 was manually annotated 8 times for cluster EB.

Info for manual annotations of cluster EF:

- Start number 14 was manually annotated 4 times for cluster EF.

Gene Information:

Gene: Ajin_52 Start: 36420, Stop: 36938, Start Num: 14

Candidate Starts for Ajin_52:

(Start: 14 @36420 has 4 MA's), (16, 36465), (18, 36594), (26, 36816), (28, 36873), (30, 36924),

Gene: Cashington_49 Start: 33456, Stop: 33944, Start Num: 15

Candidate Starts for Cashington_49:

(3, 33159), (7, 33252), (8, 33288), (13, 33420), (Start: 15 @33456 has 8 MA's), (20, 33648), (22, 33726),

Gene: Celaena_48 Start: 35134, Stop: 35619, Start Num: 15

Candidate Starts for Celaena_48:

(11, 35077), (13, 35098), (Start: 15 @35134 has 8 MA's), (18, 35284), (20, 35323), (21, 35362), (25, 35497),

Gene: ChiliPepper_47 Start: 34434, Stop: 34919, Start Num: 15

Candidate Starts for ChiliPepper_47:

(13, 34398), (Start: 15 @34434 has 8 MA's), (18, 34584), (20, 34623), (21, 34662), (22, 34701),

Gene: CroZenni_51 Start: 33989, Stop: 34474, Start Num: 15

Candidate Starts for CroZenni_51:

(4, 33716), (5, 33722), (6, 33782), (10, 33839), (13, 33953), (Start: 15 @33989 has 8 MA's), (21, 34217),

Gene: Doobus_49 Start: 33650, Stop: 34138, Start Num: 15

Candidate Starts for Doobus_49:

(1, 33248), (2, 33308), (13, 33614), (Start: 15 @33650 has 8 MA's), (18, 33800), (20, 33839), (21, 33878),

Gene: Johnathan_50 Start: 33482, Stop: 33970, Start Num: 15

Candidate Starts for Johnathan_50:

(3, 33185), (7, 33278), (8, 33314), (13, 33446), (Start: 15 @33482 has 8 MA's), (18, 33635), (20, 33674), (21, 33713), (22, 33752), (27, 33899),

Gene: Kieran_47 Start: 34346, Stop: 34882, Start Num: 12

Candidate Starts for Kieran_47:

(Start: 12 @34346 has 1 MA's), (13, 34358), (Start: 15 @34394 has 8 MA's), (17, 34499), (18, 34547), (20, 34586),

Gene: Kors_53 Start: 36509, Stop: 37027, Start Num: 14

Candidate Starts for Kors_53:

(Start: 14 @36509 has 4 MA's), (16, 36554), (18, 36683), (30, 37013),

Gene: Phisb_51 Start: 34065, Stop: 34553, Start Num: 15

Candidate Starts for Phisb_51:

(9, 33912), (13, 34029), (Start: 15 @34065 has 8 MA's), (18, 34218), (20, 34257), (21, 34296), (22, 34335),

Gene: RikSengupta_52 Start: 36534, Stop: 37052, Start Num: 14

Candidate Starts for RikSengupta_52:

(Start: 14 @36534 has 4 MA's), (16, 36579), (18, 36708), (30, 37038),

Gene: Shayna_50 Start: 32769, Stop: 33266, Start Num: 14

Candidate Starts for Shayna_50:

(Start: 14 @32769 has 4 MA's), (16, 32817), (22, 33054), (23, 33060), (29, 33249),

Gene: Slay_51 Start: 34383, Stop: 34871, Start Num: 15

Candidate Starts for Slay_51:

(13, 34347), (Start: 15 @34383 has 8 MA's), (18, 34533), (20, 34572), (21, 34611), (22, 34650),

Gene: Sparcetus_52 Start: 36411, Stop: 36929, Start Num: 14

Candidate Starts for Sparcetus_52:

(Start: 14 @36411 has 4 MA's), (16, 36456), (18, 36585), (30, 36915),

Gene: SunnyD_53 Start: 32782, Stop: 33273, Start Num: 14

Candidate Starts for SunnyD_53:

(Start: 14 @32782 has 4 MA's), (16, 32824), (19, 32962), (24, 33133),

Gene: TinyMiny_52 Start: 36429, Stop: 36947, Start Num: 14

Candidate Starts for TinyMiny_52:

(Start: 14 @36429 has 4 MA's), (16, 36474), (18, 36603), (30, 36933),

Gene: TukTuk_52 Start: 34122, Stop: 34610, Start Num: 15

Candidate Starts for TukTuk_52:

(13, 34086), (Start: 15 @34122 has 8 MA's), (18, 34275), (20, 34314), (21, 34353), (22, 34392),