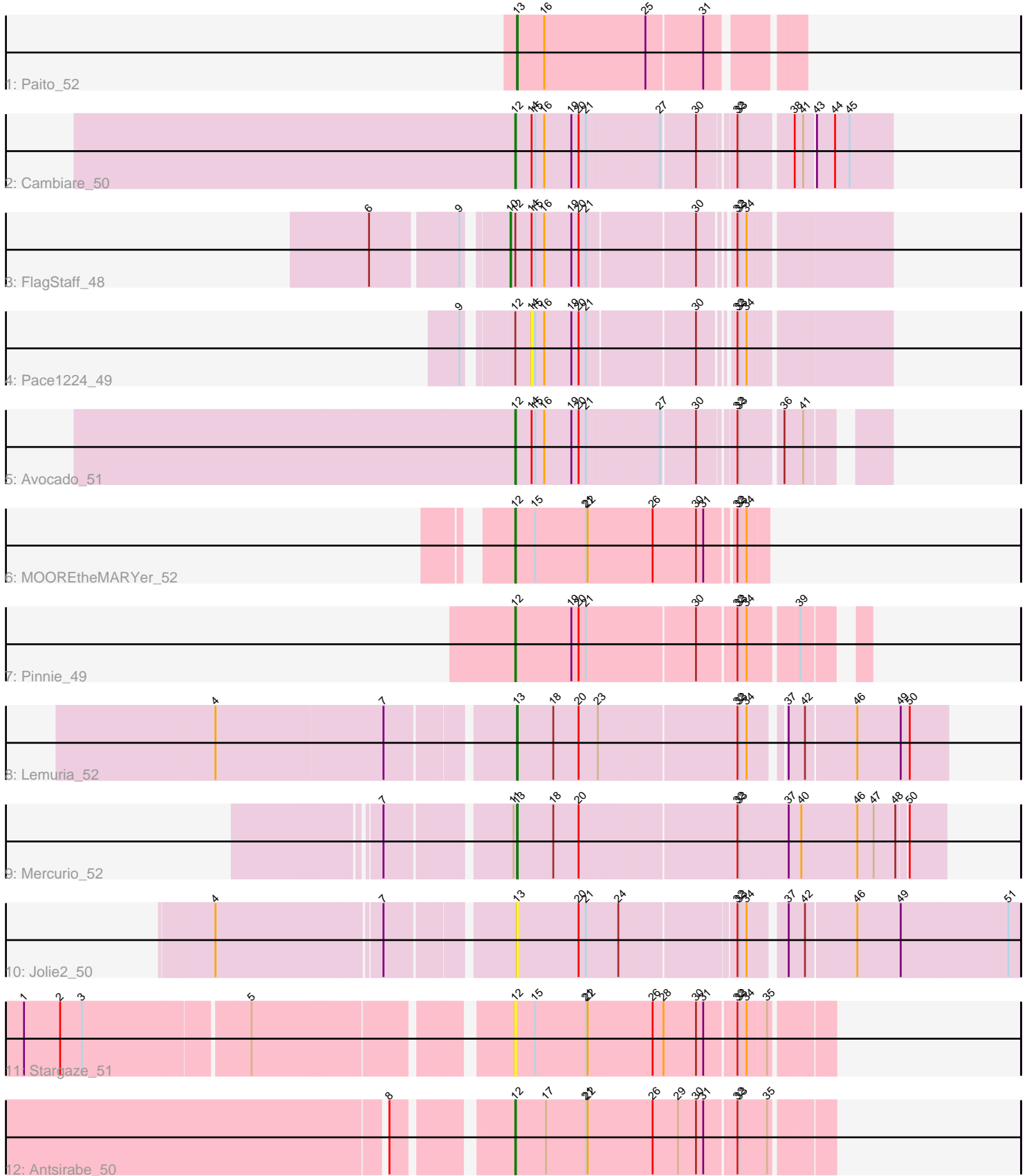


Pham 165406



Note: Tracks are now grouped by subcluster and scaled. Switching in subcluster is indicated by changes in track color. Track scale is now set by default to display the region 30 bp upstream of start 1 to 30 bp downstream of the last possible start. If this default region is judged to be packed too tightly with annotated starts, the track will be further scaled to only show that region of the ORF with annotated starts. This action will be indicated by adding "Zoomed" to the title. For starts, yellow indicates the location of called starts comprised solely of Glimmer/GeneMark auto-annotations, green indicates the location of called starts with at least 1 manual gene annotation.

## Pham 165406 Report

This analysis was run 07/09/24 on database version 566.

Pham number 165406 has 12 members, 3 are drafts.

Phages represented in each track:

- Track 1 : Paito\_52
- Track 2 : Cambiare\_50
- Track 3 : FlagStaff\_48
- Track 4 : Pace1224\_49
- Track 5 : Avocado\_51
- Track 6 : MOOREtheMARYer\_52
- Track 7 : Pinnie\_49
- Track 8 : Lemuria\_52
- Track 9 : Mercurio\_52
- Track 10 : Jolie2\_50
- Track 11 : Stargaze\_51
- Track 12 : Antsirabe\_50

### ***Summary of Final Annotations (See graph section above for start numbers):***

The start number called the most often in the published annotations is 12, it was called in 5 of the 9 non-draft genes in the pham.

Genes that call this "Most Annotated" start:

- Antsirabe\_50, Avocado\_51, Cambiare\_50, MOOREtheMARYer\_52, Pinnie\_49, Stargaze\_51,

Genes that have the "Most Annotated" start but do not call it:

- FlagStaff\_48, Pace1224\_49,

Genes that do not have the "Most Annotated" start:

- Jolie2\_50, Lemuria\_52, Mercurio\_52, Paito\_52,

### **Summary by start number:**

Start 10:

- Found in 1 of 12 ( 8.3% ) of genes in pham
- Manual Annotations of this start: 1 of 9
- Called 100.0% of time when present

- Phage (with cluster) where this start called: FlagStaff\_48 (G2),

Start 12:

- Found in 8 of 12 ( 66.7% ) of genes in pham
- Manual Annotations of this start: 5 of 9
- Called 75.0% of time when present
- Phage (with cluster) where this start called: Antsirabe\_50 (G5), Avocado\_51 (G2), Cambiare\_50 (G2), MOOREtheMARYer\_52 (G3), Pinnie\_49 (G3), Stargaze\_51 (G5),

Start 13:

- Found in 4 of 12 ( 33.3% ) of genes in pham
- Manual Annotations of this start: 3 of 9
- Called 100.0% of time when present
- Phage (with cluster) where this start called: Jolie2\_50 (G4), Lemuria\_52 (G4), Mercurio\_52 (G4), Paito\_52 (G1),

Start 14:

- Found in 4 of 12 ( 33.3% ) of genes in pham
- No Manual Annotations of this start.
- Called 25.0% of time when present
- Phage (with cluster) where this start called: Pace1224\_49 (G2),

### **Summary by clusters:**

There are 5 clusters represented in this pham: G5, G4, G3, G2, G1,

Info for manual annotations of cluster G1:

- Start number 13 was manually annotated 1 time for cluster G1.

Info for manual annotations of cluster G2:

- Start number 10 was manually annotated 1 time for cluster G2.
- Start number 12 was manually annotated 2 times for cluster G2.

Info for manual annotations of cluster G3:

- Start number 12 was manually annotated 2 times for cluster G3.

Info for manual annotations of cluster G4:

- Start number 13 was manually annotated 2 times for cluster G4.

Info for manual annotations of cluster G5:

- Start number 12 was manually annotated 1 time for cluster G5.

### **Gene Information:**

Gene: Antsirabe\_50 Start: 37691, Stop: 38182, Start Num: 12

Candidate Starts for Antsirabe\_50:

(8, 37529), (Start: 12 @37691 has 5 MA's), (17, 37742), (21, 37808), (22, 37811), (26, 37913), (29, 37955), (30, 37985), (31, 37997), (32, 38042), (33, 38045), (35, 38090),

Gene: Avocado\_51 Start: 38631, Stop: 39161, Start Num: 12

Candidate Starts for Avocado\_51:

(Start: 12 @38631 has 5 MA's), (14, 38658), (15, 38664), (16, 38679), (19, 38724), (20, 38736), (21, 38748), (27, 38859), (30, 38913), (32, 38967), (33, 38970), (36, 39033), (41, 39060),

Gene: Cambiare\_50 Start: 38392, Stop: 38961, Start Num: 12

Candidate Starts for Cambiare\_50:

(Start: 12 @38392 has 5 MA's), (14, 38419), (15, 38425), (16, 38440), (19, 38485), (20, 38497), (21, 38509), (27, 38620), (30, 38674), (32, 38728), (33, 38731), (38, 38809), (41, 38821), (43, 38839), (44, 38866), (45, 38890),

Gene: FlagStaff\_48 Start: 36899, Stop: 37468, Start Num: 10

Candidate Starts for FlagStaff\_48:

(6, 36713), (9, 36845), (Start: 10 @36899 has 1 MA's), (Start: 12 @36905 has 5 MA's), (14, 36932), (15, 36938), (16, 36953), (19, 36998), (20, 37010), (21, 37022), (30, 37187), (32, 37232), (33, 37235), (34, 37247),

Gene: Jolie2\_50 Start: 37238, Stop: 38023, Start Num: 13

Candidate Starts for Jolie2\_50:

(4, 36785), (7, 37046), (Start: 13 @37238 has 3 MA's), (20, 37340), (21, 37352), (24, 37406), (32, 37583), (33, 37586), (34, 37598), (37, 37646), (42, 37673), (46, 37754), (49, 37826), (51, 38003),

Gene: Lemuria\_52 Start: 38552, Stop: 39214, Start Num: 13

Candidate Starts for Lemuria\_52:

(4, 38090), (7, 38363), (Start: 13 @38552 has 3 MA's), (18, 38609), (20, 38651), (23, 38681), (32, 38900), (33, 38903), (34, 38915), (37, 38957), (42, 38984), (46, 39065), (49, 39137), (50, 39152),

Gene: MOOREtheMARYer\_52 Start: 38230, Stop: 38625, Start Num: 12

Candidate Starts for MOOREtheMARYer\_52:

(Start: 12 @38230 has 5 MA's), (15, 38263), (21, 38347), (22, 38350), (26, 38452), (30, 38524), (31, 38536), (32, 38578), (33, 38581), (34, 38593),

Gene: Mercurio\_52 Start: 38945, Stop: 39625, Start Num: 13

Candidate Starts for Mercurio\_52:

(7, 38750), (11, 38942), (Start: 13 @38945 has 3 MA's), (18, 39002), (20, 39044), (32, 39290), (33, 39293), (37, 39374), (40, 39395), (46, 39488), (47, 39515), (48, 39551), (50, 39566),

Gene: Pace1224\_49 Start: 36961, Stop: 37497, Start Num: 14

Candidate Starts for Pace1224\_49:

(9, 36871), (Start: 12 @36934 has 5 MA's), (14, 36961), (15, 36967), (16, 36982), (19, 37027), (20, 37039), (21, 37051), (30, 37216), (32, 37261), (33, 37264), (34, 37276),

Gene: Paito\_52 Start: 37171, Stop: 37599, Start Num: 13

Candidate Starts for Paito\_52:

(Start: 13 @37171 has 3 MA's), (16, 37213), (25, 37375), (31, 37462),

Gene: Pinnie\_49 Start: 37751, Stop: 38257, Start Num: 12

Candidate Starts for Pinnie\_49:

(Start: 12 @37751 has 5 MA's), (19, 37844), (20, 37856), (21, 37868), (30, 38039), (32, 38099), (33, 38102), (34, 38114), (39, 38186),

Gene: Stargaze\_51 Start: 37954, Stop: 38448, Start Num: 12

Candidate Starts for Stargaze\_51:

(1, 37216), (2, 37276), (3, 37312), (5, 37573), (Start: 12 @37954 has 5 MA's), (15, 37987), (21, 38071), (22, 38074), (26, 38176), (28, 38194), (30, 38248), (31, 38260), (32, 38308), (33, 38311), (34,

38323), (35, 38353),