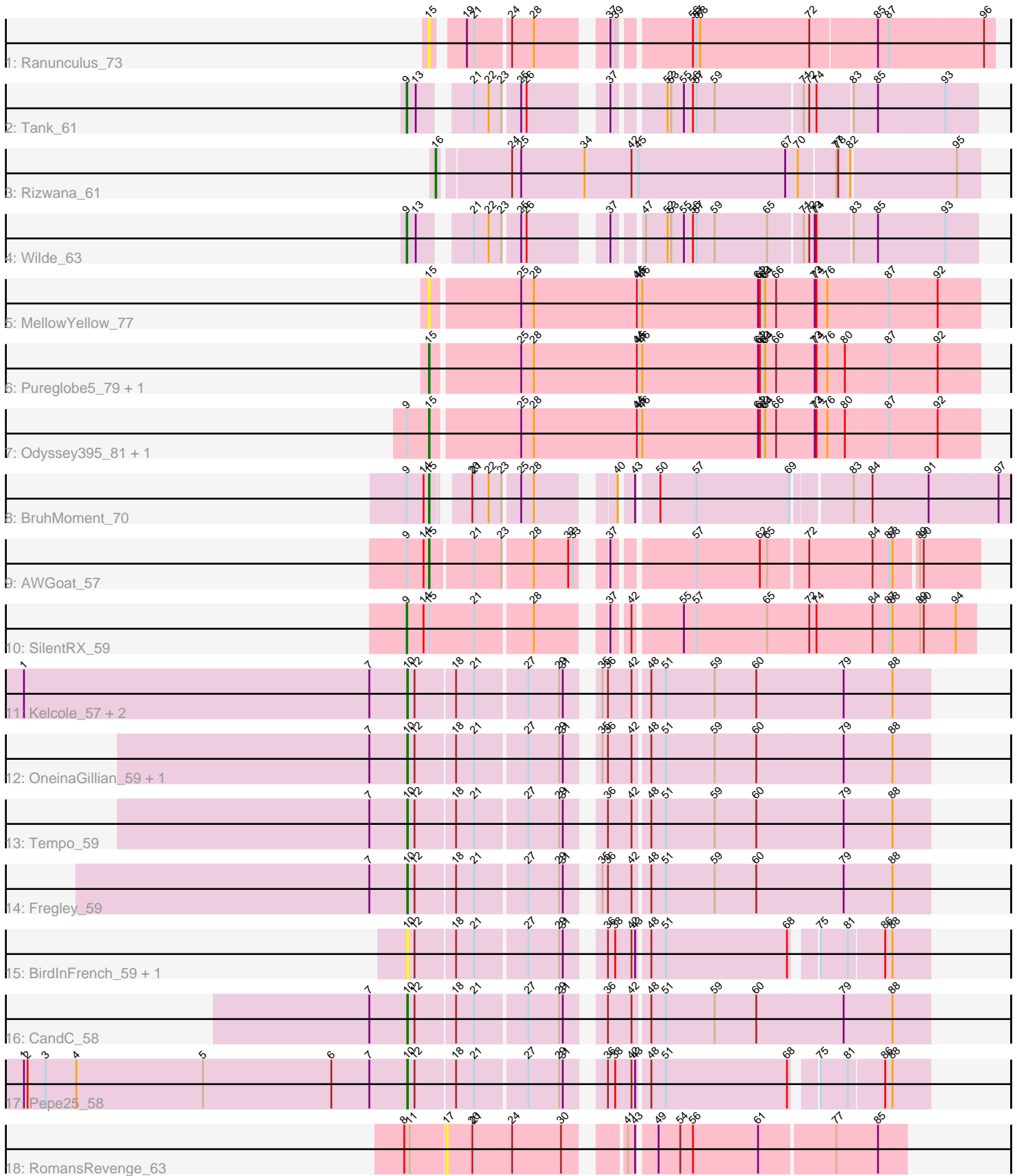


Pham 166061



Note: Tracks are now grouped by subcluster and scaled. Switching in subcluster is indicated by changes in track color. Track scale is now set by default to display the region 30 bp upstream of start 1 to 30 bp downstream of the last possible start. If this default region is judged to be packed too tightly with annotated starts, the track will be further scaled to only show that region of the ORF with annotated starts. This action will be indicated by adding "Zoomed" to the title. For starts, yellow indicates the location of called starts comprised solely of Glimmer/GeneMark auto-annotations, green indicates the location of called starts with at least 1 manual gene annotation.

Pham 166061 Report

This analysis was run 07/09/24 on database version 566.

Pham number 166061 has 24 members, 7 are drafts.

Phages represented in each track:

- Track 1 : Ranunculus_73
- Track 2 : Tank_61
- Track 3 : Rizwana_61
- Track 4 : Wilde_63
- Track 5 : MellowYellow_77
- Track 6 : Pureglobe5_79, Pointis_76
- Track 7 : Odyssey395_81, Beagle_81
- Track 8 : BruhMoment_70
- Track 9 : AWGoat_57
- Track 10 : SilentRX_59
- Track 11 : Kelcole_57, Romm_61, RobinRose_61
- Track 12 : OneinaGillian_59, Marcie_64
- Track 13 : Tempo_59
- Track 14 : Fregley_59
- Track 15 : BirdInFrench_59, Wilca_59
- Track 16 : CandC_58
- Track 17 : Pepe25_58
- Track 18 : RomansRevenge_63

Summary of Final Annotations (See graph section above for start numbers):

The start number called the most often in the published annotations is 10, it was called in 8 of the 17 non-draft genes in the pham.

Genes that call this "Most Annotated" start:

- BirdInFrench_59, CandC_58, Fregley_59, Kelcole_57, Marcie_64, OneinaGillian_59, Pepe25_58, RobinRose_61, Romm_61, Tempo_59, Wilca_59,

Genes that have the "Most Annotated" start but do not call it:

-

Genes that do not have the "Most Annotated" start:

- AWGoat_57, Beagle_81, BruhMoment_70, MellowYellow_77, Odyssey395_81, Pointis_76, Pureglobe5_79, Ranunculus_73, Rizwana_61, RomansRevenge_63,

SilentRX_59, Tank_61, Wilde_63,

Summary by start number:

Start 9:

- Found in 7 of 24 (29.2%) of genes in pham
- Manual Annotations of this start: 3 of 17
- Called 42.9% of time when present
- Phage (with cluster) where this start called: SilentRX_59 (AP4), Tank_61 (AP1), Wilde_63 (AP1),

Start 10:

- Found in 11 of 24 (45.8%) of genes in pham
- Manual Annotations of this start: 8 of 17
- Called 100.0% of time when present
- Phage (with cluster) where this start called: BirdInFrench_59 (EG), CandC_58 (EG), Fregley_59 (EG), Kelcole_57 (EG), Marcie_64 (EG), OneinaGillian_59 (EG), Pepe25_58 (EG), RobinRose_61 (EG), Romm_61 (EG), Tempo_59 (EG), Wilca_59 (EG),

Start 15:

- Found in 9 of 24 (37.5%) of genes in pham
- Manual Annotations of this start: 5 of 17
- Called 88.9% of time when present
- Phage (with cluster) where this start called: AWGoat_57 (AP4), Beagle_81 (AP2), BruhMoment_70 (AP3), MellowYellow_77 (AP2), Odyssey395_81 (AP2), Pointis_76 (AP2), Pureglobe5_79 (AP2), Ranunculus_73 (AP),

Start 16:

- Found in 1 of 24 (4.2%) of genes in pham
- Manual Annotations of this start: 1 of 17
- Called 100.0% of time when present
- Phage (with cluster) where this start called: Rizwana_61 (AP1),

Start 17:

- Found in 1 of 24 (4.2%) of genes in pham
- No Manual Annotations of this start.
- Called 100.0% of time when present
- Phage (with cluster) where this start called: RomansRevenge_63 (singleton),

Summary by clusters:

There are 7 clusters represented in this pham: singleton, AP2, AP3, EG, AP1, AP4, AP,

Info for manual annotations of cluster AP1:

- Start number 9 was manually annotated 2 times for cluster AP1.
- Start number 16 was manually annotated 1 time for cluster AP1.

Info for manual annotations of cluster AP2:

- Start number 15 was manually annotated 3 times for cluster AP2.

Info for manual annotations of cluster AP3:

- Start number 15 was manually annotated 1 time for cluster AP3.

Info for manual annotations of cluster AP4:

- Start number 9 was manually annotated 1 time for cluster AP4.
- Start number 15 was manually annotated 1 time for cluster AP4.

Info for manual annotations of cluster EG:

- Start number 10 was manually annotated 8 times for cluster EG.

Gene Information:

Gene: AWGoat_57 Start: 42937, Stop: 42152, Start Num: 15

Candidate Starts for AWGoat_57:

(Start: 9 @42973 has 3 MA's), (14, 42946), (Start: 15 @42937 has 5 MA's), (21, 42874), (23, 42832), (28, 42787), (32, 42730), (33, 42724), (37, 42697), (57, 42577), (62, 42472), (65, 42460), (72, 42400), (84, 42304), (87, 42277), (88, 42271), (89, 42241), (90, 42235),

Gene: Beagle_81 Start: 48714, Stop: 47827, Start Num: 15

Candidate Starts for Beagle_81:

(Start: 9 @48750 has 3 MA's), (Start: 15 @48714 has 5 MA's), (25, 48573), (28, 48552), (44, 48381), (45, 48378), (46, 48372), (61, 48180), (62, 48177), (63, 48171), (64, 48168), (66, 48150), (73, 48087), (74, 48084), (76, 48066), (80, 48039), (87, 47970), (92, 47889),

Gene: BirdInFrench_59 Start: 41149, Stop: 40379, Start Num: 10

Candidate Starts for BirdInFrench_59:

(Start: 10 @41149 has 8 MA's), (12, 41137), (18, 41074), (21, 41044), (27, 40966), (29, 40915), (31, 40909), (36, 40864), (38, 40852), (42, 40828), (43, 40822), (48, 40804), (51, 40780), (68, 40579), (75, 40549), (81, 40507), (86, 40453), (88, 40441),

Gene: BruhMoment_70 Start: 47914, Stop: 47087, Start Num: 15

Candidate Starts for BruhMoment_70:

(Start: 9 @47950 has 3 MA's), (14, 47923), (Start: 15 @47914 has 5 MA's), (20, 47869), (21, 47866), (22, 47842), (23, 47824), (25, 47800), (28, 47779), (40, 47677), (43, 47659), (50, 47629), (57, 47569), (69, 47416), (83, 47329), (84, 47302), (91, 47212), (97, 47107),

Gene: CandC_58 Start: 40798, Stop: 39998, Start Num: 10

Candidate Starts for CandC_58:

(7, 40861), (Start: 10 @40798 has 8 MA's), (12, 40786), (18, 40723), (21, 40693), (27, 40615), (29, 40564), (31, 40558), (36, 40513), (42, 40477), (48, 40453), (51, 40429), (59, 40348), (60, 40279), (79, 40138), (88, 40060),

Gene: Fregley_59 Start: 41063, Stop: 40263, Start Num: 10

Candidate Starts for Fregley_59:

(7, 41126), (Start: 10 @41063 has 8 MA's), (12, 41051), (18, 40988), (21, 40958), (27, 40880), (29, 40829), (31, 40823), (35, 40787), (36, 40778), (42, 40742), (48, 40718), (51, 40694), (59, 40613), (60, 40544), (79, 40403), (88, 40325),

Gene: Kelcole_57 Start: 41026, Stop: 40226, Start Num: 10

Candidate Starts for Kelcole_57:

(1, 41662), (7, 41089), (Start: 10 @41026 has 8 MA's), (12, 41014), (18, 40951), (21, 40921), (27, 40843), (29, 40792), (31, 40786), (35, 40750), (36, 40741), (42, 40705), (48, 40681), (51, 40657), (59, 40576), (60, 40507), (79, 40366), (88, 40288),

Gene: Marcie_64 Start: 41925, Stop: 41125, Start Num: 10

Candidate Starts for Marcie_64:

(7, 41988), (Start: 10 @41925 has 8 MA's), (12, 41913), (18, 41850), (21, 41820), (27, 41742), (29, 41691), (31, 41685), (35, 41649), (36, 41640), (42, 41604), (48, 41580), (51, 41556), (59, 41475), (60, 41406), (79, 41265), (88, 41187),

Gene: MellowYellow_77 Start: 48842, Stop: 47955, Start Num: 15

Candidate Starts for MellowYellow_77:

(Start: 15 @48842 has 5 MA's), (25, 48701), (28, 48680), (44, 48509), (45, 48506), (46, 48500), (61, 48308), (62, 48305), (63, 48299), (64, 48296), (66, 48278), (73, 48215), (74, 48212), (76, 48194), (87, 48098), (92, 48017),

Gene: Odyssey395_81 Start: 48951, Stop: 48064, Start Num: 15

Candidate Starts for Odyssey395_81:

(Start: 9 @48987 has 3 MA's), (Start: 15 @48951 has 5 MA's), (25, 48810), (28, 48789), (44, 48618), (45, 48615), (46, 48609), (61, 48417), (62, 48414), (63, 48408), (64, 48405), (66, 48387), (73, 48324), (74, 48321), (76, 48303), (80, 48276), (87, 48207), (92, 48126),

Gene: OneinaGillian_59 Start: 40928, Stop: 40128, Start Num: 10

Candidate Starts for OneinaGillian_59:

(7, 40991), (Start: 10 @40928 has 8 MA's), (12, 40916), (18, 40853), (21, 40823), (27, 40745), (29, 40694), (31, 40688), (35, 40652), (36, 40643), (42, 40607), (48, 40583), (51, 40559), (59, 40478), (60, 40409), (79, 40268), (88, 40190),

Gene: Pepe25_58 Start: 40459, Stop: 39689, Start Num: 10

Candidate Starts for Pepe25_58:

(1, 41095), (2, 41089), (3, 41059), (4, 41008), (5, 40798), (6, 40585), (7, 40522), (Start: 10 @40459 has 8 MA's), (12, 40447), (18, 40384), (21, 40354), (27, 40276), (29, 40225), (31, 40219), (36, 40174), (38, 40162), (42, 40138), (43, 40132), (48, 40114), (51, 40090), (68, 39889), (75, 39859), (81, 39817), (86, 39763), (88, 39751),

Gene: Pointis_76 Start: 48527, Stop: 47640, Start Num: 15

Candidate Starts for Pointis_76:

(Start: 15 @48527 has 5 MA's), (25, 48386), (28, 48365), (44, 48194), (45, 48191), (46, 48185), (61, 47993), (62, 47990), (63, 47984), (64, 47981), (66, 47963), (73, 47900), (74, 47897), (76, 47879), (80, 47852), (87, 47783), (92, 47702),

Gene: Pureglobe5_79 Start: 48971, Stop: 48084, Start Num: 15

Candidate Starts for Pureglobe5_79:

(Start: 15 @48971 has 5 MA's), (25, 48830), (28, 48809), (44, 48638), (45, 48635), (46, 48629), (61, 48437), (62, 48434), (63, 48428), (64, 48425), (66, 48407), (73, 48344), (74, 48341), (76, 48323), (80, 48296), (87, 48227), (92, 48146),

Gene: Ranunculus_73 Start: 51059, Stop: 50235, Start Num: 15

Candidate Starts for Ranunculus_73:

(Start: 15 @51059 has 5 MA's), (19, 51017), (21, 51005), (24, 50954), (28, 50918), (37, 50828), (39, 50819), (56, 50714), (57, 50708), (58, 50702), (72, 50522), (85, 50417), (87, 50399), (96, 50252),

Gene: Rizwana_61 Start: 45189, Stop: 44326, Start Num: 16

Candidate Starts for Rizwana_61:

(Start: 16 @45189 has 1 MA's), (24, 45078), (25, 45063), (34, 44958), (42, 44880), (45, 44868), (67, 44625), (70, 44604), (77, 44547), (78, 44544), (82, 44529), (95, 44364),

Gene: RobinRose_61 Start: 41440, Stop: 40640, Start Num: 10

Candidate Starts for RobinRose_61:

(1, 42076), (7, 41503), (Start: 10 @41440 has 8 MA's), (12, 41428), (18, 41365), (21, 41335), (27, 41257), (29, 41206), (31, 41200), (35, 41164), (36, 41155), (42, 41119), (48, 41095), (51, 41071), (59, 40990), (60, 40921), (79, 40780), (88, 40702),

Gene: RomansRevenge_63 Start: 45422, Stop: 44724, Start Num: 17

Candidate Starts for RomansRevenge_63:

(8, 45488), (11, 45479), (17, 45422), (20, 45380), (21, 45377), (24, 45314), (30, 45233), (41, 45164), (43, 45152), (49, 45125), (54, 45089), (56, 45068), (61, 44960), (77, 44840), (85, 44771),

Gene: Romm_61 Start: 41437, Stop: 40637, Start Num: 10

Candidate Starts for Romm_61:

(1, 42073), (7, 41500), (Start: 10 @41437 has 8 MA's), (12, 41425), (18, 41362), (21, 41332), (27, 41254), (29, 41203), (31, 41197), (35, 41161), (36, 41152), (42, 41116), (48, 41092), (51, 41068), (59, 40987), (60, 40918), (79, 40777), (88, 40699),

Gene: SilentRX_59 Start: 44240, Stop: 43395, Start Num: 9

Candidate Starts for SilentRX_59:

(Start: 9 @44240 has 3 MA's), (14, 44213), (Start: 15 @44204 has 5 MA's), (21, 44129), (28, 44042), (37, 43952), (42, 43928), (55, 43853), (57, 43832), (65, 43715), (72, 43646), (74, 43634), (84, 43547), (87, 43520), (88, 43514), (89, 43475), (90, 43469), (94, 43424),

Gene: Tank_61 Start: 45214, Stop: 44408, Start Num: 9

Candidate Starts for Tank_61:

(Start: 9 @45214 has 3 MA's), (13, 45199), (21, 45133), (22, 45109), (23, 45091), (25, 45067), (26, 45058), (37, 44956), (52, 44884), (53, 44878), (55, 44857), (56, 44842), (57, 44836), (59, 44806), (71, 44668), (72, 44659), (74, 44647), (83, 44596), (85, 44560), (93, 44455),

Gene: Tempo_59 Start: 41305, Stop: 40505, Start Num: 10

Candidate Starts for Tempo_59:

(7, 41368), (Start: 10 @41305 has 8 MA's), (12, 41293), (18, 41230), (21, 41200), (27, 41122), (29, 41071), (31, 41065), (36, 41020), (42, 40984), (48, 40960), (51, 40936), (59, 40855), (60, 40786), (79, 40645), (88, 40567),

Gene: Wilca_59 Start: 41149, Stop: 40379, Start Num: 10

Candidate Starts for Wilca_59:

(Start: 10 @41149 has 8 MA's), (12, 41137), (18, 41074), (21, 41044), (27, 40966), (29, 40915), (31, 40909), (36, 40864), (38, 40852), (42, 40828), (43, 40822), (48, 40804), (51, 40780), (68, 40579), (75, 40549), (81, 40507), (86, 40453), (88, 40441),

Gene: Wilde_63 Start: 45513, Stop: 44707, Start Num: 9

Candidate Starts for Wilde_63:

(Start: 9 @45513 has 3 MA's), (13, 45498), (21, 45432), (22, 45408), (23, 45390), (25, 45366), (26, 45357), (37, 45255), (47, 45219), (52, 45183), (53, 45177), (55, 45156), (56, 45141), (57, 45135), (59, 45105), (65, 45018), (71, 44967), (72, 44958), (73, 44949), (74, 44946), (83, 44895), (85, 44859), (93, 44754),