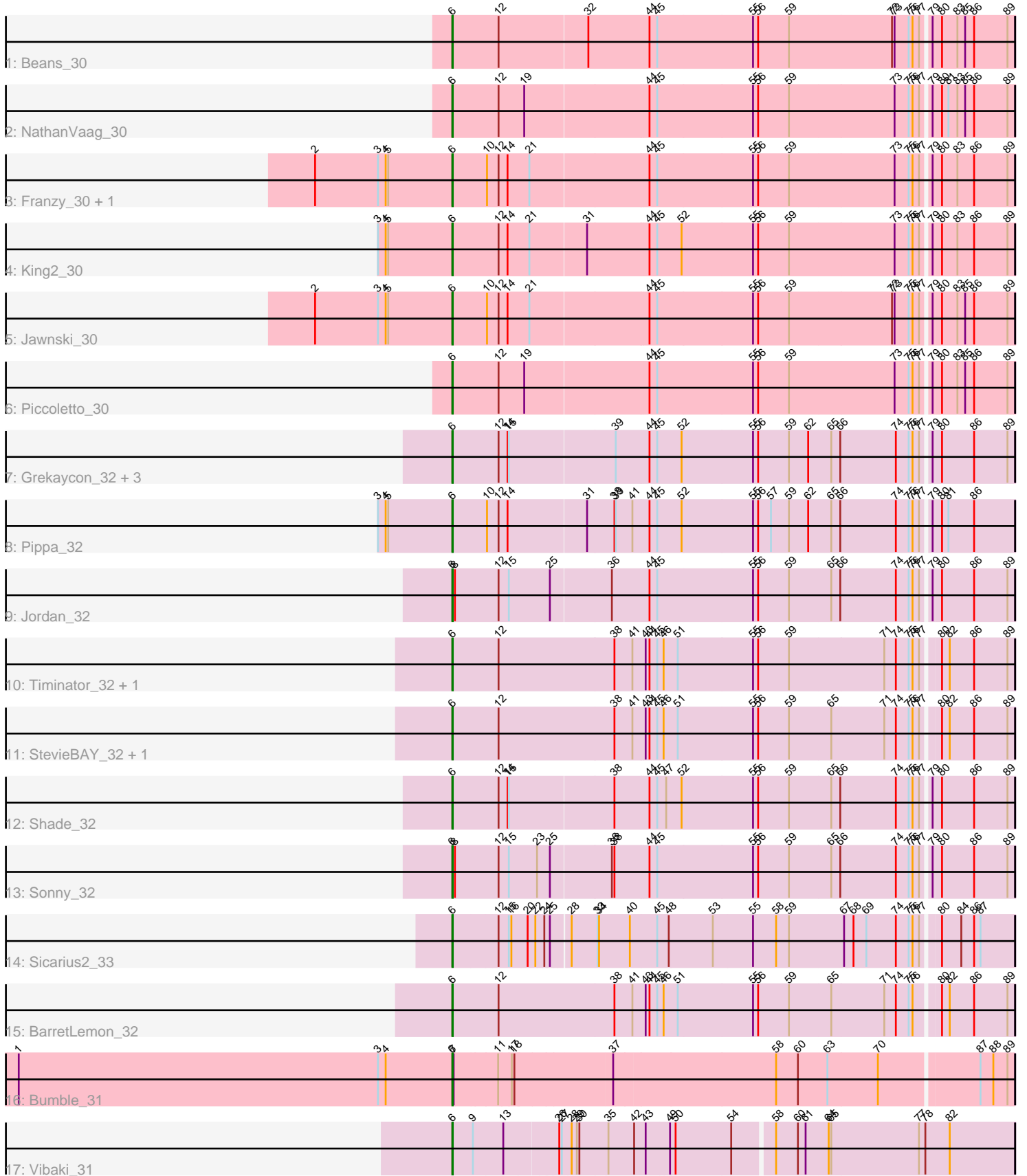


# Pham 166065



Note: Tracks are now grouped by subcluster and scaled. Switching in subcluster is indicated by changes in track color. Track scale is now set by default to display the region 30 bp upstream of start 1 to 30 bp downstream of the last possible start. If this default region is judged to be packed too tightly with annotated starts, the track will be further scaled to only show that region of the ORF with annotated starts. This action will be indicated by adding "Zoomed" to the title. For starts, yellow indicates the location of called starts comprised solely of Glimmer/GeneMark auto-annotations, green indicates the location of called starts with at least 1 manual gene annotation.

## Pham 166065 Report

This analysis was run 07/09/24 on database version 566.

Pham number 166065 has 23 members, 1 are drafts.

Phages represented in each track:

- Track 1 : Beans\_30
- Track 2 : NathanVaag\_30
- Track 3 : Franzy\_30, Brent\_30
- Track 4 : King2\_30
- Track 5 : Jawnski\_30
- Track 6 : Piccoletto\_30
- Track 7 : Grekaycon\_32, BossLady\_32, Martha\_32, TaeYoung\_32
- Track 8 : Pippa\_32
- Track 9 : Jordan\_32
- Track 10 : Timinator\_32, LeeroyJ\_32
- Track 11 : StevieBAY\_32, GravityBall\_32
- Track 12 : Shade\_32
- Track 13 : Sonny\_32
- Track 14 : Sicarius2\_33
- Track 15 : BarretLemon\_32
- Track 16 : Bumble\_31
- Track 17 : Vibaki\_31

### ***Summary of Final Annotations (See graph section above for start numbers):***

The start number called the most often in the published annotations is 6, it was called in 22 of the 22 non-draft genes in the pham.

Genes that call this "Most Annotated" start:

- BarretLemon\_32, Beans\_30, BossLady\_32, Brent\_30, Bumble\_31, Franzy\_30, GravityBall\_32, Grekaycon\_32, Jawnski\_30, Jordan\_32, King2\_30, LeeroyJ\_32, Martha\_32, NathanVaag\_30, Piccoletto\_30, Pippa\_32, Shade\_32, Sicarius2\_33, Sonny\_32, StevieBAY\_32, TaeYoung\_32, Timinator\_32, Vibaki\_31,

Genes that have the "Most Annotated" start but do not call it:

- 

Genes that do not have the "Most Annotated" start:

-

## Summary by start number:

Start 6:

- Found in 23 of 23 ( 100.0% ) of genes in pham
- Manual Annotations of this start: 22 of 22
- Called 100.0% of time when present
- Phage (with cluster) where this start called: BarretLemon\_32 (AO2), Beans\_30 (AO1), BossLady\_32 (AO2), Brent\_30 (AO1), Bumble\_31 (FH), Franzy\_30 (AO1), GravityBall\_32 (AO2), Grekaycon\_32 (AO2), Jawnski\_30 (AO1), Jordan\_32 (AO2), King2\_30 (AO1), LeeroyJ\_32 (AO2), Martha\_32 (AO2), NathanVaag\_30 (AO1), Piccoletto\_30 (AO1), Pippa\_32 (AO2), Shade\_32 (AO2), Sicarius2\_33 (AO2), Sonny\_32 (AO2), StevieBAY\_32 (AO2), TaeYoung\_32 (AO2), Timinator\_32 (AO2), Vibaki\_31 (FL),

## Summary by clusters:

There are 4 clusters represented in this pham: FH, FL, AO2, AO1,

Info for manual annotations of cluster AO1:

- Start number 6 was manually annotated 7 times for cluster AO1.

Info for manual annotations of cluster AO2:

- Start number 6 was manually annotated 13 times for cluster AO2.

Info for manual annotations of cluster FH:

- Start number 6 was manually annotated 1 time for cluster FH.

Info for manual annotations of cluster FL:

- Start number 6 was manually annotated 1 time for cluster FL.

## Gene Information:

Gene: BarretLemon\_32 Start: 27189, Stop: 28472, Start Num: 6

Candidate Starts for BarretLemon\_32:

(Start: 6 @27189 has 22 MA's), (12, 27297), (38, 27567), (41, 27609), (43, 27636), (44, 27645), (45, 27663), (46, 27678), (51, 27711), (55, 27885), (56, 27897), (59, 27969), (65, 28065), (71, 28188), (74, 28215), (75, 28245), (76, 28254), (80, 28305), (82, 28323), (86, 28380), (89, 28458),

Gene: Beans\_30 Start: 26891, Stop: 28168, Start Num: 6

Candidate Starts for Beans\_30:

(Start: 6 @26891 has 22 MA's), (12, 26999), (32, 27203), (44, 27341), (45, 27359), (55, 27581), (56, 27593), (59, 27665), (72, 27902), (73, 27908), (75, 27941), (76, 27950), (77, 27965), (79, 27983), (80, 28001), (83, 28037), (85, 28055), (86, 28076), (89, 28154),

Gene: BossLady\_32 Start: 27166, Stop: 28443, Start Num: 6

Candidate Starts for BossLady\_32:

(Start: 6 @27166 has 22 MA's), (12, 27274), (14, 27295), (15, 27298), (39, 27541), (44, 27616), (45, 27634), (52, 27691), (55, 27856), (56, 27868), (59, 27940), (62, 27985), (65, 28036), (66, 28057), (74, 28186), (75, 28216), (76, 28225), (77, 28240), (79, 28258), (80, 28276), (86, 28351), (89, 28429),

Gene: Brent\_30 Start: 26853, Stop: 28130, Start Num: 6

Candidate Starts for Brent\_30:

(2, 26532), (3, 26679), (4, 26697), (5, 26703), (Start: 6 @26853 has 22 MA's), (10, 26934), (12, 26961), (14, 26982), (21, 27033), (44, 27303), (45, 27321), (55, 27543), (56, 27555), (59, 27627), (73, 27870), (75, 27903), (76, 27912), (77, 27927), (79, 27945), (80, 27963), (83, 27999), (86, 28038), (89, 28116),

Gene: Bumble\_31 Start: 25165, Stop: 26421, Start Num: 6

Candidate Starts for Bumble\_31:

(1, 24151), (3, 24991), (4, 25009), (Start: 6 @25165 has 22 MA's), (7, 25168), (11, 25264), (17, 25294), (18, 25300), (37, 25516), (58, 25888), (60, 25939), (63, 26008), (70, 26125), (87, 26347), (88, 26377), (89, 26410),

Gene: Franzy\_30 Start: 26852, Stop: 28129, Start Num: 6

Candidate Starts for Franzy\_30:

(2, 26531), (3, 26678), (4, 26696), (5, 26702), (Start: 6 @26852 has 22 MA's), (10, 26933), (12, 26960), (14, 26981), (21, 27032), (44, 27302), (45, 27320), (55, 27542), (56, 27554), (59, 27626), (73, 27869), (75, 27902), (76, 27911), (77, 27926), (79, 27944), (80, 27962), (83, 27998), (86, 28037), (89, 28115),

Gene: GravityBall\_32 Start: 27188, Stop: 28471, Start Num: 6

Candidate Starts for GravityBall\_32:

(Start: 6 @27188 has 22 MA's), (12, 27296), (38, 27566), (41, 27608), (43, 27635), (44, 27644), (45, 27662), (46, 27677), (51, 27710), (55, 27884), (56, 27896), (59, 27968), (65, 28064), (71, 28187), (74, 28214), (75, 28244), (76, 28253), (77, 28268), (80, 28304), (82, 28322), (86, 28379), (89, 28457),

Gene: Grekaycon\_32 Start: 27112, Stop: 28389, Start Num: 6

Candidate Starts for Grekaycon\_32:

(Start: 6 @27112 has 22 MA's), (12, 27220), (14, 27241), (15, 27244), (39, 27487), (44, 27562), (45, 27580), (52, 27637), (55, 27802), (56, 27814), (59, 27886), (62, 27931), (65, 27982), (66, 28003), (74, 28132), (75, 28162), (76, 28171), (77, 28186), (79, 28204), (80, 28222), (86, 28297), (89, 28375),

Gene: Jawnski\_30 Start: 26862, Stop: 28139, Start Num: 6

Candidate Starts for Jawnski\_30:

(2, 26541), (3, 26688), (4, 26706), (5, 26712), (Start: 6 @26862 has 22 MA's), (10, 26943), (12, 26970), (14, 26991), (21, 27042), (44, 27312), (45, 27330), (55, 27552), (56, 27564), (59, 27636), (72, 27873), (73, 27879), (75, 27912), (76, 27921), (77, 27936), (79, 27954), (80, 27972), (83, 28008), (85, 28026), (86, 28047), (89, 28125),

Gene: Jordan\_32 Start: 27109, Stop: 28386, Start Num: 6

Candidate Starts for Jordan\_32:

(Start: 6 @27109 has 22 MA's), (8, 27115), (12, 27217), (15, 27241), (25, 27337), (36, 27475), (44, 27559), (45, 27577), (55, 27799), (56, 27811), (59, 27883), (65, 27979), (66, 28000), (74, 28129), (75, 28159), (76, 28168), (77, 28183), (79, 28201), (80, 28219), (86, 28294), (89, 28372),

Gene: King2\_30 Start: 26849, Stop: 28126, Start Num: 6

Candidate Starts for King2\_30:

(3, 26675), (4, 26693), (5, 26699), (Start: 6 @26849 has 22 MA's), (12, 26957), (14, 26978), (21, 27029), (31, 27158), (44, 27299), (45, 27317), (52, 27374), (55, 27539), (56, 27551), (59, 27623), (73, 27866), (75, 27899), (76, 27908), (77, 27923), (79, 27941), (80, 27959), (83, 27995), (86, 28034), (89, 28112),

Gene: LeeroyJ\_32 Start: 27188, Stop: 28471, Start Num: 6

Candidate Starts for LeeroyJ\_32:

(Start: 6 @27188 has 22 MA's), (12, 27296), (38, 27566), (41, 27608), (43, 27635), (44, 27644), (45, 27662), (46, 27677), (51, 27710), (55, 27884), (56, 27896), (59, 27968), (71, 28187), (74, 28214), (75, 28244), (76, 28253), (77, 28268), (80, 28304), (82, 28322), (86, 28379), (89, 28457),

Gene: Martha\_32 Start: 27113, Stop: 28390, Start Num: 6

Candidate Starts for Martha\_32:

(Start: 6 @27113 has 22 MA's), (12, 27221), (14, 27242), (15, 27245), (39, 27488), (44, 27563), (45, 27581), (52, 27638), (55, 27803), (56, 27815), (59, 27887), (62, 27932), (65, 27983), (66, 28004), (74, 28133), (75, 28163), (76, 28172), (77, 28187), (79, 28205), (80, 28223), (86, 28298), (89, 28376),

Gene: NathanVaag\_30 Start: 26865, Stop: 28142, Start Num: 6

Candidate Starts for NathanVaag\_30:

(Start: 6 @26865 has 22 MA's), (12, 26973), (19, 27033), (44, 27315), (45, 27333), (55, 27555), (56, 27567), (59, 27639), (73, 27882), (75, 27915), (76, 27924), (77, 27939), (79, 27957), (80, 27975), (81, 27990), (83, 28011), (85, 28029), (86, 28050), (89, 28128),

Gene: Piccoletto\_30 Start: 26867, Stop: 28144, Start Num: 6

Candidate Starts for Piccoletto\_30:

(Start: 6 @26867 has 22 MA's), (12, 26975), (19, 27035), (44, 27317), (45, 27335), (55, 27557), (56, 27569), (59, 27641), (73, 27884), (75, 27917), (76, 27926), (77, 27941), (79, 27959), (80, 27977), (83, 28013), (85, 28031), (86, 28052), (89, 28130),

Gene: Pippa\_32 Start: 27238, Stop: 28515, Start Num: 6

Candidate Starts for Pippa\_32:

(3, 27064), (4, 27082), (5, 27088), (Start: 6 @27238 has 22 MA's), (10, 27319), (12, 27346), (14, 27367), (31, 27547), (38, 27610), (39, 27613), (41, 27652), (44, 27688), (45, 27706), (52, 27763), (55, 27928), (56, 27940), (57, 27970), (59, 28012), (62, 28057), (65, 28108), (66, 28129), (74, 28258), (75, 28288), (76, 28297), (77, 28312), (79, 28330), (80, 28348), (81, 28363), (86, 28423),

Gene: Shade\_32 Start: 27079, Stop: 28356, Start Num: 6

Candidate Starts for Shade\_32:

(Start: 6 @27079 has 22 MA's), (12, 27187), (14, 27208), (15, 27211), (38, 27451), (44, 27529), (45, 27547), (47, 27568), (52, 27604), (55, 27769), (56, 27781), (59, 27853), (65, 27949), (66, 27970), (74, 28099), (75, 28129), (76, 28138), (77, 28153), (79, 28171), (80, 28189), (86, 28264), (89, 28342),

Gene: Sicarius2\_33 Start: 26732, Stop: 27994, Start Num: 6

Candidate Starts for Sicarius2\_33:

(Start: 6 @26732 has 22 MA's), (12, 26831), (15, 26855), (16, 26861), (20, 26897), (22, 26915), (24, 26933), (25, 26945), (28, 26984), (33, 27044), (34, 27047), (40, 27119), (45, 27182), (48, 27209), (53, 27311), (55, 27404), (58, 27458), (59, 27488), (67, 27614), (68, 27635), (69, 27665), (74, 27734), (75, 27764), (76, 27773), (77, 27788), (80, 27824), (84, 27869), (86, 27899), (87, 27914),

Gene: Sonny\_32 Start: 27109, Stop: 28386, Start Num: 6

Candidate Starts for Sonny\_32:

(Start: 6 @27109 has 22 MA's), (8, 27115), (12, 27217), (15, 27241), (23, 27307), (25, 27337), (36, 27475), (38, 27481), (44, 27559), (45, 27577), (55, 27799), (56, 27811), (59, 27883), (65, 27979), (66, 28000), (74, 28129), (75, 28159), (76, 28168), (77, 28183), (79, 28201), (80, 28219), (86, 28294), (89, 28372),

Gene: StevieBAY\_32 Start: 27188, Stop: 28471, Start Num: 6

Candidate Starts for StevieBAY\_32:

(Start: 6 @27188 has 22 MA's), (12, 27296), (38, 27566), (41, 27608), (43, 27635), (44, 27644), (45, 27662), (46, 27677), (51, 27710), (55, 27884), (56, 27896), (59, 27968), (65, 28064), (71, 28187), (74, 28214), (75, 28244), (76, 28253), (77, 28268), (80, 28304), (82, 28322), (86, 28379), (89, 28457),

Gene: TaeYoung\_32 Start: 27113, Stop: 28390, Start Num: 6

Candidate Starts for TaeYoung\_32:

(Start: 6 @27113 has 22 MA's), (12, 27221), (14, 27242), (15, 27245), (39, 27488), (44, 27563), (45, 27581), (52, 27638), (55, 27803), (56, 27815), (59, 27887), (62, 27932), (65, 27983), (66, 28004), (74, 28133), (75, 28163), (76, 28172), (77, 28187), (79, 28205), (80, 28223), (86, 28298), (89, 28376),

Gene: Timinator\_32 Start: 27188, Stop: 28471, Start Num: 6

Candidate Starts for Timinator\_32:

(Start: 6 @27188 has 22 MA's), (12, 27296), (38, 27566), (41, 27608), (43, 27635), (44, 27644), (45, 27662), (46, 27677), (51, 27710), (55, 27884), (56, 27896), (59, 27968), (71, 28187), (74, 28214), (75, 28244), (76, 28253), (77, 28268), (80, 28304), (82, 28322), (86, 28379), (89, 28457),

Gene: Vibaki\_31 Start: 28229, Stop: 29491, Start Num: 6

Candidate Starts for Vibaki\_31:

(Start: 6 @28229 has 22 MA's), (9, 28274), (13, 28343), (26, 28460), (27, 28466), (28, 28484), (29, 28496), (30, 28502), (35, 28568), (42, 28628), (43, 28655), (49, 28709), (50, 28721), (54, 28850), (58, 28940), (60, 28991), (61, 29009), (64, 29060), (65, 29066), (77, 29270), (78, 29285), (82, 29342),