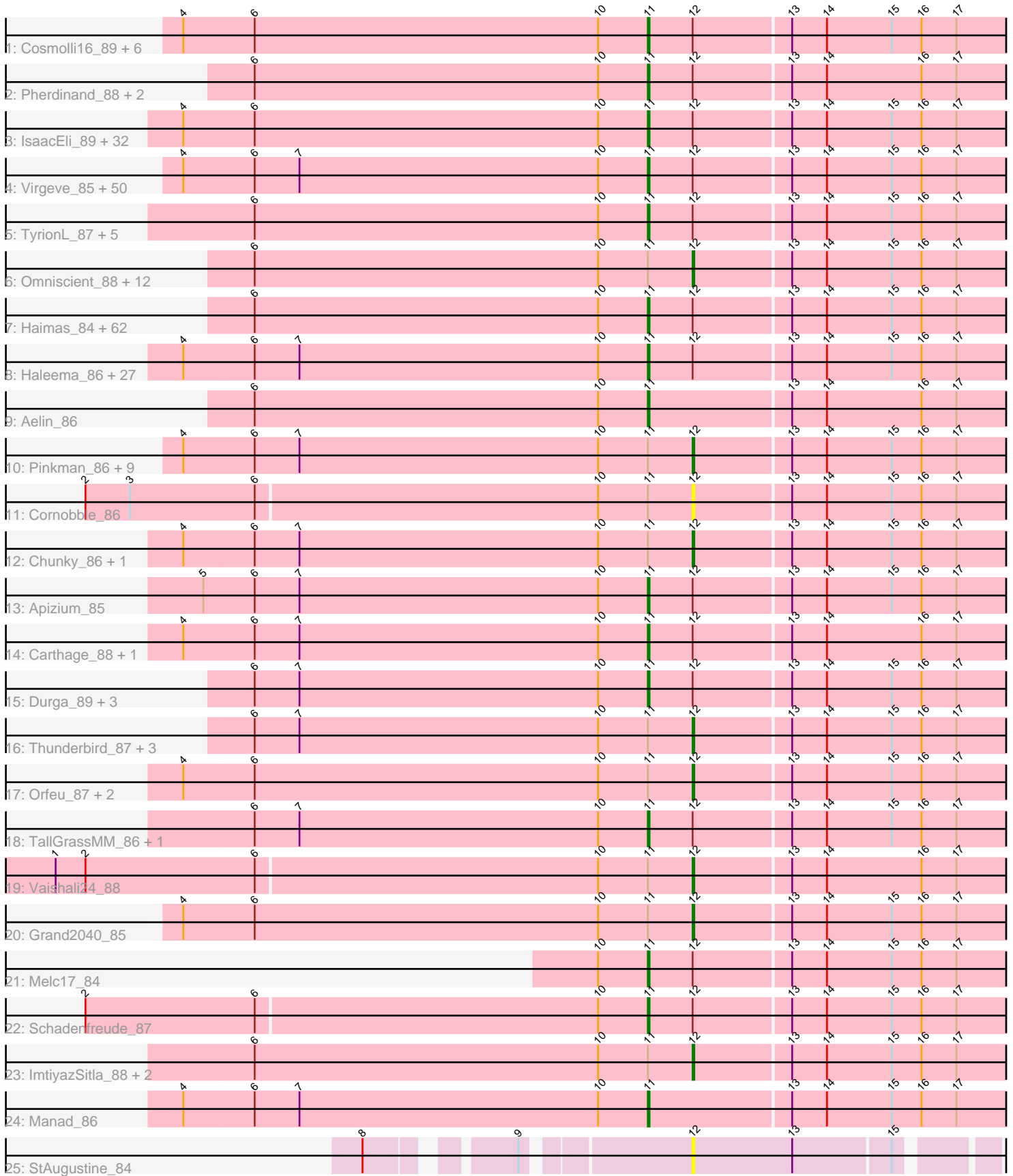


Pham 166437



Note: Tracks are now grouped by subcluster and scaled. Switching in subcluster is indicated by changes in track color. Track scale is now set by default to display the region 30 bp upstream of start 1 to 30 bp downstream of the last possible start. If this default region is judged to be packed too tightly with annotated starts, the track will be further scaled to only show that region of the ORF with annotated starts. This action will be indicated by adding "Zoomed" to the title. For starts, yellow indicates the location of called starts comprised solely of Glimmer/GeneMark auto-annotations, green indicates the location of called starts with at least 1 manual gene annotation.

Pham 166437 Report

This analysis was run 07/09/24 on database version 566.

Pham number 166437 has 243 members, 21 are drafts.

Phages represented in each track:

- Track 1 : Cosmolli16_89, Chorkpop_88, Adriana_87, Vaticameos_84, Brilliant_90, Maru_87, Lulwa_84
- Track 2 : Pherdinand_88, Lego3393_85, Yoshand_88
- Track 3 : IsaacEli_89, Harvey_84, Kikipoo_89, Struggle_87, Duggie_87, SDcharge11_86, AbsoluteMadLad_85, TomBombadil_87, Daffy_86, Held_85, Antonia_86, Soto_84, EmpTee_86, Hetaeria_87, Hertubise_86, Burr_87, Morgushi_84, Vivaldi_87, Tooj_84, KlimbOn_86, MitKao_87, Swiphy_91, Daka_89, ProfessorX_85, Prickles_88, Jiminy_87, UAch1_88, CampRoach_88, Xavier_86, PhatCats2014_86, Colbert_85, Riggan_88, PhatLouie_89
- Track 4 : Virgeve_85, Lumine_88, Fringe_91, Numberten_86, Jillium_88, Hocus_85, Quisquillae_89, Toni_86, Etaye_86, PhrankReynolds_85, Zonia_87, Mecca_87, FriarPreacher_84, HenryJackson_87, JDog_86, Longacauda_88, Spartan300_86, Simielle_86, LuckyMarjie_84, Orwigg_87, Gareth_87, Phareon_85, Squid_86, Pipsqueak_84, UncleHowie_83, Legolas_88, ABU_85, DaddyDaniels_90, Phipps_85, JakeO_88, Skippy_87, DoesntMatter_84, Nacho_0089, PhenghisKhan_87, Mosaic_84, Vortex_85, Kahve_87, GeneCoco_87, Kimbrough_88, Gyarad_0086, Serendipity_86, Hartsy_85, Serpentine_0088, Roy17_84, Puhltonio_83, Charles1_88, Weher20_84, Phergie_87, Chaelin_88, Mesh1_88, SassyCat97_85
- Track 5 : TyrionL_87, Labeouficaum_87, Derpp_86, Kwksand96_88, CharlieGBrown_85, DuchessDung_84
- Track 6 : Omniscient_88, MelsMeow_86, Sigman_86, FluffyNinja_88, Ricotta_84, Coletti_89, Dione_85, Pacifista_88, Chute_87, Veritas_86, Pops_84, Katniss_89, Schueller_86
- Track 7 : Haimas_84, BatteryCK_85, PinheadLarry_86, Oosterbaan_87, Squiggle_86, Vista_86, Oline_86, Mcshane_86, Chah_89, HSavage_85, Doddsville_84, ShiVal_85, PhrodoBaggins_89, Childish_87, Hamish_84, OSmaximus_88, Wallhey_88, Inchworm_88, Surely_87, Samaymay_87, Zaider_88, FugateOSU_87, Mag7_85, Kwadwo_86, Virapocalypse_88, Nicole21_88, Fozzie_84, Soile_88, LemonSlice_87, Nyala_86, Lopsy_83, Mutante_88, Sophia_85, CamL_87, Iridoclysis_86, MRabcd_87, Scrick_86, DelRivs_85, Thora_85, PG1_85, Fang_88, MichaelPhcott_85, Mulan_86, Keitherie_90, Magic8_86, Swish_88, Orion_85, QueenBeane_87, Phleuron_84, BlackStallion_86, JacAttac_87, Windsor_87, Murdoc_83, JangoPhett_85, LasagnaCat_88, ThreeOh3D2_88, Kloppinator_87, Telesworld_85, Kailash_85, True_85, Emiris_89, Scoot17C_87, Slatt_87
- Track 8 : Haleema_86, Gwilliam_87, Placalicious_85, KingVeVeVe_85, Olak_87, Roliet_84, Bluephacebaby_86, Frankicide_85, RedMaple_86, Inverness_85, Bishoperium_87, Cher_87, Boehler_85, Basato_86, Dingo_84, KLucky39_85,

Suffolk_83, MiniBoss_83, Lasso_86, Crownjwl_84, CheetO_84, YouGoGlencoco_87, Eremos_85, BlueHusk_88, Dati_84, Potter_82, Jiraiya_91, Cobra_87

- Track 9 : Aelin_86
- Track 10 : Pinkman_86, LeeLot_85, Andre_88, Selr12_88, Waterdiva_88, LostAndPhound_86, Megamind20_87, Trypo_87, MrPhizzler_86, Dice_87
- Track 11 : Cornobble_86
- Track 12 : Chunky_86, Zelda_87
- Track 13 : Apizium_85
- Track 14 : Carthage_88, Robyn_89
- Track 15 : Durga_89, KingTut_78, HighStump_88, Giraffe_87
- Track 16 : Thunderbird_87, Buckeye_86, Matalotodo_87, Eugenia_89
- Track 17 : Orfeu_87, Megatron_88, LeiMonet_89
- Track 18 : TallGrassMM_86, Solosis_85
- Track 19 : Vaishali24_88
- Track 20 : Grand2040_85
- Track 21 : Melc17_84
- Track 22 : Schadenfreude_87
- Track 23 : ImtiyazSitla_88, Ashraf_88, Maskar_88
- Track 24 : Manad_86
- Track 25 : StAugustine_84

Summary of Final Annotations (See graph section above for start numbers):

The start number called the most often in the published annotations is 11, it was called in 199 of the 222 non-draft genes in the pham.

Genes that call this "Most Annotated" start:

- ABU_85, AbsoluteMadLad_85, Adriana_87, Aelin_86, Antonia_86, Apizium_85, Basato_86, BatteryCK_85, Bishoperium_87, BlackStallion_86, BlueHusk_88, Bluephacebaby_86, Boehler_85, Brilliant_90, Burr_87, CamL_87, CampRoach_88, Carthage_88, Chaelin_88, Chah_89, Charles1_88, CharlieGBrown_85, CheetO_84, Cher_87, Childish_87, Chorkpop_88, Cobra_87, Colbert_85, Cosmolli16_89, Crownjwl_84, DaddyDaniels_90, Daffy_86, Daka_89, Dati_84, DelRivs_85, Derpp_86, Dingo_84, Doddsville_84, DoesntMatter_84, DuchessDung_84, Duggie_87, Durga_89, Emiris_89, EmpTee_86, Eremos_85, Etaye_86, Fang_88, Fozzie_84, Frankicide_85, FriarPreacher_84, Fringe_91, FugateOSU_87, Gareth_87, GeneCoco_87, Giraffe_87, Gwilliam_87, Gyarad_0086, HSavage_85, Haimas_84, Haleema_86, Hamish_84, Hartsy_85, Harvey_84, Held_85, HenryJackson_87, Hertubise_86, Hetaeria_87, HighStump_88, Hocus_85, Inchworm_88, Inverness_85, Iridoclysis_86, IsaacEli_89, JDog_86, JacAttac_87, JakeO_88, JangoPhett_85, Jillium_88, Jiminy_87, Jiraiya_91, KLucky39_85, Kahve_87, Kailash_85, Keitherie_90, Kikipoo_89, Kimbrough_88, KingTut_78, KingVeVeVe_85, KlimbOn_86, Kloppinator_87, Kwadwo_86, Kwksand96_88, Labeouficaum_87, LasagnaCat_88, Lasso_86, Lego3393_85, Legolas_88, LemonSlice_87, Longacauda_88, Lopsy_83, LuckyMarjie_84, Lulwa_84, Lumine_88, MRabcd_87, Mag7_85, Magic8_86, Manad_86, Maru_87, Mcshane_86, Mecca_87, Melc17_84, Mesh1_88, MichaelPhcott_85, MiniBoss_83, MitKao_87, Morgushi_84, Mosaic_84, Mulan_86, Murdoc_83, Mutante_88, Nacho_0089, Nicole21_88, Numberten_86, Nyala_86, OSmaximus_88, Olak_87, Oline_86, Oosterbaan_87, Orion_85, Orwigg_87, PG1_85, Phareon_85, PhatCats2014_86, PhatLouie_89,

PhenghisKhan_87, Pherdinand_88, Phergie_87, Phipps_85, Phleuron_84, PhrankReynolds_85, PhrodoBaggins_89, PinheadLarry_86, Pipsqueak_84, Placalicious_85, Potter_82, Prickles_88, ProfessorX_85, Puhltonio_83, QueenBeane_87, Quisquilliae_89, RedMaple_86, Riggan_88, Robyn_89, Roliet_84, Roy17_84, SDcharge11_86, Samaymay_87, SassyCat97_85, Schadenfreude_87, Scoot17C_87, Scrick_86, Serendipity_86, Serpentine_0088, ShiVal_85, Simielle_86, Skippy_87, Slatt_87, Soile_88, Solosis_85, Sophia_85, Soto_84, Spartan300_86, Squid_86, Squiggle_86, Struggle_87, Suffolk_83, Surely_87, Swiphy_91, Swish_88, TallGrassMM_86, Telesworld_85, Thora_85, ThreeOh3D2_88, TomBombadil_87, Toni_86, Tooj_84, True_85, TyrionL_87, UAch1_88, UncleHowie_83, Vaticameos_84, Virapocalypse_88, Virgeve_85, Vista_86, Vivaldi_87, Vortex_85, Wallhey_88, Weher20_84, Windsor_87, Xavier_86, Yoshand_88, YouGoGlencoco_87, Zaider_88, Zonia_87,

Genes that have the "Most Annotated" start but do not call it:

- Andre_88, Ashraf_88, Buckeye_86, Chunky_86, Chute_87, Coletti_89, Cornobble_86, Dice_87, Dione_85, Eugenia_89, FluffyNinja_88, Grand2040_85, ImtiyazSitla_88, Katniss_89, LeeLot_85, LeiMonet_89, LostAndPhound_86, Maskar_88, Matalotodo_87, Megamind20_87, Megatron_88, MelsMeow_86, MrPhizzler_86, Omniscient_88, Orfeu_87, Pacifista_88, Pinkman_86, Pops_84, Ricotta_84, Schueller_86, Selr12_88, Sigman_86, Thunderbird_87, Trypo_87, Vaishali24_88, Veritas_86, Waterdiva_88, Zelda_87,

Genes that do not have the "Most Annotated" start:

- StAugustine_84,

Summary by start number:

Start 11:

- Found in 242 of 243 (99.6%) of genes in pham
- Manual Annotations of this start: 199 of 222
- Called 84.3% of time when present
- Phage (with cluster) where this start called: ABU_85 (B1), AbsoluteMadLad_85 (B1), Adriana_87 (B1), Aelin_86 (B1), Antonia_86 (B1), Apizium_85 (B1), Basato_86 (B1), BatteryCK_85 (B1), Bishoperium_87 (B1), BlackStallion_86 (B1), BlueHusk_88 (B1), Bluephacebaby_86 (B1), Boehler_85 (B1), Brilliant_90 (B1), Burr_87 (B1), CamL_87 (B1), CampRoach_88 (B1), Carthage_88 (B1), Chaelin_88 (B1), Chah_89 (B1), Charles1_88 (B1), CharlieGBrown_85 (B1), CheetO_84 (B1), Cher_87 (B1), Childish_87 (B1), Chorkpop_88 (B1), Cobra_87 (B1), Colbert_85 (B1), Cosmolli16_89 (B1), Crownjwl_84 (B1), DaddyDaniels_90 (B1), Daffy_86 (B1), Daka_89 (B1), Dati_84 (B1), DelRivs_85 (B1), Derpp_86 (B1), Dingo_84 (B1), Doddsville_84 (B1), DoesntMatter_84 (B1), DuchessDung_84 (B1), Duggie_87 (B1), Durga_89 (B1), Emiris_89 (B1), EmpTee_86 (B1), Eremos_85 (B1), Etaye_86 (B1), Fang_88 (B1), Fozzie_84 (B1), Frankicide_85 (B1), FriarPreacher_84 (B1), Fringe_91 (B1), FugateOSU_87 (B1), Gareth_87 (B1), GeneCoco_87 (B1), Giraffe_87 (B1), Gwilliam_87 (B1), Gyarad_0086 (B1), HSavage_85 (B1), Haimas_84 (B1), Haleema_86 (B1), Hamish_84 (B1), Hartsy_85 (B1), Harvey_84 (B1), Held_85 (B1), HenryJackson_87 (B1), Hertubise_86 (B1), Hetaeria_87 (B1), HighStump_88 (B1), Hocus_85 (B1), Inchworm_88 (B1), Inverness_85 (B1), Iridoclysis_86 (B1), IsaacEli_89 (B1), JDog_86 (B1), JacAttac_87 (B1), JakeO_88 (B1), JangoPhett_85 (B1), Jillium_88 (B1), Jiminy_87 (B1), Jiraiya_91 (B1), KLucky39_85 (B1), Kahve_87 (B1), Kailash_85 (B1), Keitherie_90 (B1), Kikipoo_89 (B1), Kimbrough_88 (B1), KingTut_78 (B1), KingVeVeVe_85 (B1), KlimbOn_86 (B1), Kloppinator_87 (B1),

Kwadwo_86 (B1), Kwksand96_88 (B1), Labeouficaum_87 (B1), LasagnaCat_88 (B1), Lasso_86 (B1), Lego3393_85 (B1), Legolas_88 (B1), LemonSlice_87 (B1), Longacauda_88 (B1), Lopsy_83 (B1), LuckyMarjie_84 (B1), Lulwa_84 (B1), Lumine_88 (B1), MRabcd_87 (B1), Mag7_85 (B1), Magic8_86 (B1), Manad_86 (B1), Maru_87 (B1), Mcshane_86 (B1), Mecca_87 (B1), Melc17_84 (B1), Mesh1_88 (B1), MichaelPhcott_85 (B1), MiniBoss_83 (B1), MitKao_87 (B1), Morgushi_84 (B1), Mosaic_84 (B1), Mulan_86 (B1), Murdoc_83 (B1), Mutante_88 (B1), Nacho_0089 (B1), Nicole21_88 (B1), Numberten_86 (B1), Nyala_86 (B1), OSmaximus_88 (B1), Olak_87 (B1), Oline_86 (B1), Oosterbaan_87 (B1), Orion_85 (B1), Orwigg_87 (B1), PG1_85 (B1), Phareon_85 (B1), PhatCats2014_86 (B1), PhatLouie_89 (B1), Phenghiskhan_87 (B1), Pherdinand_88 (B1), Phergie_87 (B1), Phipps_85 (B1), Phleuron_84 (B1), PhrankReynolds_85 (B1), PhrodoBaggins_89 (B1), PinheadLarry_86 (B1), Pipsqueak_84 (B1), Placalicious_85 (B1), Potter_82 (B1), Prickles_88 (B1), ProfessorX_85 (B1), Puhltonio_83 (B1), QueenBeane_87 (B1), Quisquillae_89 (B1), RedMaple_86 (B1), Riggan_88 (B1), Robyn_89 (B1), Roliet_84 (B1), Roy17_84 (B1), SDcharge11_86 (B1), Samaymay_87 (B1), SassyCat97_85 (B1), Schadenfreude_87 (B1), Scoot17C_87 (B1), Scrick_86 (B1), Serendipity_86 (B1), Serpentine_0088 (B1), ShiVal_85 (B1), Simielle_86 (B1), Skippy_87 (B1), Slatt_87 (B1), Soile_88 (B1), Solosis_85 (B1), Sophia_85 (B1), Soto_84 (B1), Spartan300_86 (B1), Squid_86 (B1), Squiggle_86 (B1), Struggle_87 (B1), Suffolk_83 (B1), Surely_87 (B1), Swiphy_91 (B1), Swish_88 (B1), TallGrassMM_86 (B1), Telesworld_85 (B1), Thora_85 (B1), ThreeOh3D2_88 (B1), TomBombadil_87 (B1), Toni_86 (B1), Tooj_84 (B1), True_85 (B1), TyrionL_87 (B1), UAch1_88 (B1), UncleHowie_83 (B1), Vaticameos_84 (B1), Virapocalypse_88 (B1), Virgeve_85 (B1), Vista_86 (B1), Vivaldi_87 (B1), Vortex_85 (B1), Wallhey_88 (B1), Weher20_84 (B1), Windsor_87 (B1), Xavier_86 (B1), Yoshand_88 (B1), YouGoGlencoco_87 (B1), Zaider_88 (B1), Zonia_87 (B1),

Start 12:

- Found in 241 of 243 (99.2%) of genes in pham
- Manual Annotations of this start: 23 of 222
- Called 16.2% of time when present
- Phage (with cluster) where this start called: Andre_88 (B1), Ashraf_88 (B1), Buckeye_86 (B1), Chunky_86 (B1), Chute_87 (B1), Coletti_89 (B1), Cornobble_86 (B1), Dice_87 (B1), Dione_85 (B1), Eugenia_89 (B1), FluffyNinja_88 (B1), Grand2040_85 (B1), ImtiyazSitla_88 (B1), Katniss_89 (B1), LeeLot_85 (B1), LeiMonet_89 (B1), LostAndPhound_86 (B1), Maskar_88 (B1), Matalotodo_87 (B1), Megamind20_87 (B1), Megatron_88 (B1), MelsMeow_86 (B1), MrPhizzler_86 (B1), Omniscient_88 (B1), Orfeu_87 (B1), Pacifista_88 (B1), Pinkman_86 (B1), Pops_84 (B1), Ricotta_84 (B1), Schueller_86 (B1), Selr12_88 (B1), Sigman_86 (B1), StAugustine_84 (singleton), Thunderbird_87 (B1), Trypo_87 (B1), Vaishali24_88 (B1), Veritas_86 (B1), Waterdiva_88 (B1), Zelda_87 (B1),

Summary by clusters:

There are 2 clusters represented in this pham: singleton, B1,

Info for manual annotations of cluster B1:

- Start number 11 was manually annotated 199 times for cluster B1.
- Start number 12 was manually annotated 23 times for cluster B1.

Gene Information:

Gene: ABU_85 Start: 63937, Stop: 63677, Start Num: 11

Candidate Starts for ABU_85:

(4, 64216), (6, 64174), (7, 64147), (10, 63967), (Start: 11 @63937 has 199 MA's), (Start: 12 @63910 has 23 MA's), (13, 63853), (14, 63832), (15, 63793), (16, 63775), (17, 63754),

Gene: AbsoluteMadLad_85 Start: 63890, Stop: 63630, Start Num: 11

Candidate Starts for AbsoluteMadLad_85:

(4, 64169), (6, 64127), (10, 63920), (Start: 11 @63890 has 199 MA's), (Start: 12 @63863 has 23 MA's), (13, 63806), (14, 63785), (15, 63746), (16, 63728), (17, 63707),

Gene: Adriana_87 Start: 64452, Stop: 64192, Start Num: 11

Candidate Starts for Adriana_87:

(4, 64731), (6, 64689), (10, 64482), (Start: 11 @64452 has 199 MA's), (Start: 12 @64425 has 23 MA's), (13, 64368), (14, 64347), (15, 64308), (16, 64290), (17, 64269),

Gene: Aelin_86 Start: 63394, Stop: 63134, Start Num: 11

Candidate Starts for Aelin_86:

(6, 63631), (10, 63424), (Start: 11 @63394 has 199 MA's), (13, 63310), (14, 63289), (16, 63232), (17, 63211),

Gene: Andre_88 Start: 63808, Stop: 63575, Start Num: 12

Candidate Starts for Andre_88:

(4, 64114), (6, 64072), (7, 64045), (10, 63865), (Start: 11 @63835 has 199 MA's), (Start: 12 @63808 has 23 MA's), (13, 63751), (14, 63730), (15, 63691), (16, 63673), (17, 63652),

Gene: Antonia_86 Start: 63439, Stop: 63179, Start Num: 11

Candidate Starts for Antonia_86:

(4, 63718), (6, 63676), (10, 63469), (Start: 11 @63439 has 199 MA's), (Start: 12 @63412 has 23 MA's), (13, 63355), (14, 63334), (15, 63295), (16, 63277), (17, 63256),

Gene: Apizium_85 Start: 63094, Stop: 62834, Start Num: 11

Candidate Starts for Apizium_85:

(5, 63361), (6, 63331), (7, 63304), (10, 63124), (Start: 11 @63094 has 199 MA's), (Start: 12 @63067 has 23 MA's), (13, 63010), (14, 62989), (15, 62950), (16, 62932), (17, 62911),

Gene: Ashraf_88 Start: 63899, Stop: 63666, Start Num: 12

Candidate Starts for Ashraf_88:

(6, 64163), (10, 63956), (Start: 11 @63926 has 199 MA's), (Start: 12 @63899 has 23 MA's), (13, 63842), (14, 63821), (15, 63782), (16, 63764), (17, 63743),

Gene: Basato_86 Start: 63848, Stop: 63588, Start Num: 11

Candidate Starts for Basato_86:

(4, 64127), (6, 64085), (7, 64058), (10, 63878), (Start: 11 @63848 has 199 MA's), (Start: 12 @63821 has 23 MA's), (13, 63764), (14, 63743), (15, 63704), (16, 63686), (17, 63665),

Gene: BatteryCK_85 Start: 63374, Stop: 63114, Start Num: 11

Candidate Starts for BatteryCK_85:

(6, 63611), (10, 63404), (Start: 11 @63374 has 199 MA's), (Start: 12 @63347 has 23 MA's), (13, 63290), (14, 63269), (15, 63230), (16, 63212), (17, 63191),

Gene: Bishoperium_87 Start: 63952, Stop: 63692, Start Num: 11

Candidate Starts for Bishoperium_87:

(4, 64231), (6, 64189), (7, 64162), (10, 63982), (Start: 11 @63952 has 199 MA's), (Start: 12 @63925 has 23 MA's), (13, 63868), (14, 63847), (15, 63808), (16, 63790), (17, 63769),

Gene: BlackStallion_86 Start: 63802, Stop: 63542, Start Num: 11

Candidate Starts for BlackStallion_86:

(6, 64039), (10, 63832), (Start: 11 @63802 has 199 MA's), (Start: 12 @63775 has 23 MA's), (13, 63718), (14, 63697), (15, 63658), (16, 63640), (17, 63619),

Gene: BlueHusk_88 Start: 63626, Stop: 63366, Start Num: 11

Candidate Starts for BlueHusk_88:

(4, 63905), (6, 63863), (7, 63836), (10, 63656), (Start: 11 @63626 has 199 MA's), (Start: 12 @63599 has 23 MA's), (13, 63542), (14, 63521), (15, 63482), (16, 63464), (17, 63443),

Gene: Bluephacebaby_86 Start: 63986, Stop: 63726, Start Num: 11

Candidate Starts for Bluephacebaby_86:

(4, 64265), (6, 64223), (7, 64196), (10, 64016), (Start: 11 @63986 has 199 MA's), (Start: 12 @63959 has 23 MA's), (13, 63902), (14, 63881), (15, 63842), (16, 63824), (17, 63803),

Gene: Boehler_85 Start: 63777, Stop: 63517, Start Num: 11

Candidate Starts for Boehler_85:

(4, 64056), (6, 64014), (7, 63987), (10, 63807), (Start: 11 @63777 has 199 MA's), (Start: 12 @63750 has 23 MA's), (13, 63693), (14, 63672), (15, 63633), (16, 63615), (17, 63594),

Gene: Brilliant_90 Start: 63966, Stop: 63706, Start Num: 11

Candidate Starts for Brilliant_90:

(4, 64245), (6, 64203), (10, 63996), (Start: 11 @63966 has 199 MA's), (Start: 12 @63939 has 23 MA's), (13, 63882), (14, 63861), (15, 63822), (16, 63804), (17, 63783),

Gene: Buckeye_86 Start: 64477, Stop: 64244, Start Num: 12

Candidate Starts for Buckeye_86:

(6, 64741), (7, 64714), (10, 64534), (Start: 11 @64504 has 199 MA's), (Start: 12 @64477 has 23 MA's), (13, 64420), (14, 64399), (15, 64360), (16, 64342), (17, 64321),

Gene: Burr_87 Start: 63438, Stop: 63178, Start Num: 11

Candidate Starts for Burr_87:

(4, 63717), (6, 63675), (10, 63468), (Start: 11 @63438 has 199 MA's), (Start: 12 @63411 has 23 MA's), (13, 63354), (14, 63333), (15, 63294), (16, 63276), (17, 63255),

Gene: CamL_87 Start: 63737, Stop: 63477, Start Num: 11

Candidate Starts for CamL_87:

(6, 63974), (10, 63767), (Start: 11 @63737 has 199 MA's), (Start: 12 @63710 has 23 MA's), (13, 63653), (14, 63632), (15, 63593), (16, 63575), (17, 63554),

Gene: CampRoach_88 Start: 63834, Stop: 63574, Start Num: 11

Candidate Starts for CampRoach_88:

(4, 64113), (6, 64071), (10, 63864), (Start: 11 @63834 has 199 MA's), (Start: 12 @63807 has 23 MA's), (13, 63750), (14, 63729), (15, 63690), (16, 63672), (17, 63651),

Gene: Carthage_88 Start: 63508, Stop: 63248, Start Num: 11

Candidate Starts for Carthage_88:

(4, 63787), (6, 63745), (7, 63718), (10, 63538), (Start: 11 @63508 has 199 MA's), (Start: 12 @63481 has 23 MA's), (13, 63424), (14, 63403), (16, 63346), (17, 63325),

Gene: Chaelin_88 Start: 63968, Stop: 63708, Start Num: 11

Candidate Starts for Chaelin_88:

(4, 64247), (6, 64205), (7, 64178), (10, 63998), (Start: 11 @63968 has 199 MA's), (Start: 12 @63941 has 23 MA's), (13, 63884), (14, 63863), (15, 63824), (16, 63806), (17, 63785),

Gene: Chah_89 Start: 63537, Stop: 63277, Start Num: 11

Candidate Starts for Chah_89:

(6, 63774), (10, 63567), (Start: 11 @63537 has 199 MA's), (Start: 12 @63510 has 23 MA's), (13, 63453), (14, 63432), (15, 63393), (16, 63375), (17, 63354),

Gene: Charles1_88 Start: 63746, Stop: 63486, Start Num: 11

Candidate Starts for Charles1_88:

(4, 64025), (6, 63983), (7, 63956), (10, 63776), (Start: 11 @63746 has 199 MA's), (Start: 12 @63719 has 23 MA's), (13, 63662), (14, 63641), (15, 63602), (16, 63584), (17, 63563),

Gene: CharlieGBrown_85 Start: 63469, Stop: 63209, Start Num: 11

Candidate Starts for CharlieGBrown_85:

(6, 63706), (10, 63499), (Start: 11 @63469 has 199 MA's), (Start: 12 @63442 has 23 MA's), (13, 63385), (14, 63364), (15, 63325), (16, 63307), (17, 63286),

Gene: CheetO_84 Start: 63843, Stop: 63583, Start Num: 11

Candidate Starts for CheetO_84:

(4, 64122), (6, 64080), (7, 64053), (10, 63873), (Start: 11 @63843 has 199 MA's), (Start: 12 @63816 has 23 MA's), (13, 63759), (14, 63738), (15, 63699), (16, 63681), (17, 63660),

Gene: Cher_87 Start: 63940, Stop: 63680, Start Num: 11

Candidate Starts for Cher_87:

(4, 64219), (6, 64177), (7, 64150), (10, 63970), (Start: 11 @63940 has 199 MA's), (Start: 12 @63913 has 23 MA's), (13, 63856), (14, 63835), (15, 63796), (16, 63778), (17, 63757),

Gene: Childish_87 Start: 64131, Stop: 63871, Start Num: 11

Candidate Starts for Childish_87:

(6, 64368), (10, 64161), (Start: 11 @64131 has 199 MA's), (Start: 12 @64104 has 23 MA's), (13, 64047), (14, 64026), (15, 63987), (16, 63969), (17, 63948),

Gene: Chorkpop_88 Start: 63594, Stop: 63334, Start Num: 11

Candidate Starts for Chorkpop_88:

(4, 63873), (6, 63831), (10, 63624), (Start: 11 @63594 has 199 MA's), (Start: 12 @63567 has 23 MA's), (13, 63510), (14, 63489), (15, 63450), (16, 63432), (17, 63411),

Gene: Chunky_86 Start: 63412, Stop: 63179, Start Num: 12

Candidate Starts for Chunky_86:

(4, 63718), (6, 63676), (7, 63649), (10, 63469), (Start: 11 @63439 has 199 MA's), (Start: 12 @63412 has 23 MA's), (13, 63355), (14, 63334), (15, 63295), (16, 63277), (17, 63256),

Gene: Chute_87 Start: 64105, Stop: 63872, Start Num: 12

Candidate Starts for Chute_87:

(6, 64369), (10, 64162), (Start: 11 @64132 has 199 MA's), (Start: 12 @64105 has 23 MA's), (13, 64048), (14, 64027), (15, 63988), (16, 63970), (17, 63949),

Gene: Cobra_87 Start: 63963, Stop: 63703, Start Num: 11

Candidate Starts for Cobra_87:

(4, 64242), (6, 64200), (7, 64173), (10, 63993), (Start: 11 @63963 has 199 MA's), (Start: 12 @63936 has 23 MA's), (13, 63879), (14, 63858), (15, 63819), (16, 63801), (17, 63780),

Gene: Colbert_85 Start: 62861, Stop: 62601, Start Num: 11

Candidate Starts for Colbert_85:

(4, 63140), (6, 63098), (10, 62891), (Start: 11 @62861 has 199 MA's), (Start: 12 @62834 has 23 MA's), (13, 62777), (14, 62756), (15, 62717), (16, 62699), (17, 62678),

Gene: Coletti_89 Start: 64461, Stop: 64228, Start Num: 12

Candidate Starts for Coletti_89:

(6, 64725), (10, 64518), (Start: 11 @64488 has 199 MA's), (Start: 12 @64461 has 23 MA's), (13, 64404), (14, 64383), (15, 64344), (16, 64326), (17, 64305),

Gene: Cornobble_86 Start: 63404, Stop: 63171, Start Num: 12

Candidate Starts for Cornobble_86:

(2, 63767), (3, 63740), (6, 63665), (10, 63461), (Start: 11 @63431 has 199 MA's), (Start: 12 @63404 has 23 MA's), (13, 63347), (14, 63326), (15, 63287), (16, 63269), (17, 63248),

Gene: Cosmolli16_89 Start: 64309, Stop: 64049, Start Num: 11

Candidate Starts for Cosmolli16_89:

(4, 64588), (6, 64546), (10, 64339), (Start: 11 @64309 has 199 MA's), (Start: 12 @64282 has 23 MA's), (13, 64225), (14, 64204), (15, 64165), (16, 64147), (17, 64126),

Gene: Crownjwl_84 Start: 63618, Stop: 63358, Start Num: 11

Candidate Starts for Crownjwl_84:

(4, 63897), (6, 63855), (7, 63828), (10, 63648), (Start: 11 @63618 has 199 MA's), (Start: 12 @63591 has 23 MA's), (13, 63534), (14, 63513), (15, 63474), (16, 63456), (17, 63435),

Gene: DaddyDaniels_90 Start: 64085, Stop: 63825, Start Num: 11

Candidate Starts for DaddyDaniels_90:

(4, 64364), (6, 64322), (7, 64295), (10, 64115), (Start: 11 @64085 has 199 MA's), (Start: 12 @64058 has 23 MA's), (13, 64001), (14, 63980), (15, 63941), (16, 63923), (17, 63902),

Gene: Daffy_86 Start: 63579, Stop: 63319, Start Num: 11

Candidate Starts for Daffy_86:

(4, 63858), (6, 63816), (10, 63609), (Start: 11 @63579 has 199 MA's), (Start: 12 @63552 has 23 MA's), (13, 63495), (14, 63474), (15, 63435), (16, 63417), (17, 63396),

Gene: Daka_89 Start: 63784, Stop: 63524, Start Num: 11

Candidate Starts for Daka_89:

(4, 64063), (6, 64021), (10, 63814), (Start: 11 @63784 has 199 MA's), (Start: 12 @63757 has 23 MA's), (13, 63700), (14, 63679), (15, 63640), (16, 63622), (17, 63601),

Gene: Dati_84 Start: 63763, Stop: 63503, Start Num: 11

Candidate Starts for Dati_84:

(4, 64042), (6, 64000), (7, 63973), (10, 63793), (Start: 11 @63763 has 199 MA's), (Start: 12 @63736 has 23 MA's), (13, 63679), (14, 63658), (15, 63619), (16, 63601), (17, 63580),

Gene: DelRivs_85 Start: 63392, Stop: 63132, Start Num: 11

Candidate Starts for DelRivs_85:

(6, 63629), (10, 63422), (Start: 11 @63392 has 199 MA's), (Start: 12 @63365 has 23 MA's), (13, 63308), (14, 63287), (15, 63248), (16, 63230), (17, 63209),

Gene: Derpp_86 Start: 63502, Stop: 63242, Start Num: 11

Candidate Starts for Derpp_86:

(6, 63739), (10, 63532), (Start: 11 @63502 has 199 MA's), (Start: 12 @63475 has 23 MA's), (13, 63418), (14, 63397), (15, 63358), (16, 63340), (17, 63319),

Gene: Dice_87 Start: 63397, Stop: 63164, Start Num: 12

Candidate Starts for Dice_87:

(4, 63703), (6, 63661), (7, 63634), (10, 63454), (Start: 11 @63424 has 199 MA's), (Start: 12 @63397 has 23 MA's), (13, 63340), (14, 63319), (15, 63280), (16, 63262), (17, 63241),

Gene: Dingo_84 Start: 63145, Stop: 62885, Start Num: 11

Candidate Starts for Dingo_84:

(4, 63424), (6, 63382), (7, 63355), (10, 63175), (Start: 11 @63145 has 199 MA's), (Start: 12 @63118 has 23 MA's), (13, 63061), (14, 63040), (15, 63001), (16, 62983), (17, 62962),

Gene: Dione_85 Start: 63117, Stop: 62884, Start Num: 12

Candidate Starts for Dione_85:

(6, 63381), (10, 63174), (Start: 11 @63144 has 199 MA's), (Start: 12 @63117 has 23 MA's), (13, 63060), (14, 63039), (15, 63000), (16, 62982), (17, 62961),

Gene: Doddsville_84 Start: 63584, Stop: 63324, Start Num: 11

Candidate Starts for Doddsville_84:

(6, 63821), (10, 63614), (Start: 11 @63584 has 199 MA's), (Start: 12 @63557 has 23 MA's), (13, 63500), (14, 63479), (15, 63440), (16, 63422), (17, 63401),

Gene: DoesntMatter_84 Start: 63420, Stop: 63160, Start Num: 11

Candidate Starts for DoesntMatter_84:

(4, 63699), (6, 63657), (7, 63630), (10, 63450), (Start: 11 @63420 has 199 MA's), (Start: 12 @63393 has 23 MA's), (13, 63336), (14, 63315), (15, 63276), (16, 63258), (17, 63237),

Gene: DuchessDung_84 Start: 63100, Stop: 62840, Start Num: 11

Candidate Starts for DuchessDung_84:

(6, 63337), (10, 63130), (Start: 11 @63100 has 199 MA's), (Start: 12 @63073 has 23 MA's), (13, 63016), (14, 62995), (15, 62956), (16, 62938), (17, 62917),

Gene: Duggie_87 Start: 63726, Stop: 63466, Start Num: 11

Candidate Starts for Duggie_87:

(4, 64005), (6, 63963), (10, 63756), (Start: 11 @63726 has 199 MA's), (Start: 12 @63699 has 23 MA's), (13, 63642), (14, 63621), (15, 63582), (16, 63564), (17, 63543),

Gene: Durga_89 Start: 64208, Stop: 63948, Start Num: 11

Candidate Starts for Durga_89:

(6, 64445), (7, 64418), (10, 64238), (Start: 11 @64208 has 199 MA's), (Start: 12 @64181 has 23 MA's), (13, 64124), (14, 64103), (15, 64064), (16, 64046), (17, 64025),

Gene: Emiris_89 Start: 64114, Stop: 63854, Start Num: 11

Candidate Starts for Emiris_89:

(6, 64351), (10, 64144), (Start: 11 @64114 has 199 MA's), (Start: 12 @64087 has 23 MA's), (13, 64030), (14, 64009), (15, 63970), (16, 63952), (17, 63931),

Gene: EmpTee_86 Start: 63516, Stop: 63256, Start Num: 11

Candidate Starts for EmpTee_86:

(4, 63795), (6, 63753), (10, 63546), (Start: 11 @63516 has 199 MA's), (Start: 12 @63489 has 23 MA's), (13, 63432), (14, 63411), (15, 63372), (16, 63354), (17, 63333),

Gene: Eremos_85 Start: 63806, Stop: 63546, Start Num: 11

Candidate Starts for Eremos_85:

(4, 64085), (6, 64043), (7, 64016), (10, 63836), (Start: 11 @63806 has 199 MA's), (Start: 12 @63779 has 23 MA's), (13, 63722), (14, 63701), (15, 63662), (16, 63644), (17, 63623),

Gene: Etaye_86 Start: 64292, Stop: 64032, Start Num: 11

Candidate Starts for Etaye_86:

(4, 64571), (6, 64529), (7, 64502), (10, 64322), (Start: 11 @64292 has 199 MA's), (Start: 12 @64265 has 23 MA's), (13, 64208), (14, 64187), (15, 64148), (16, 64130), (17, 64109),

Gene: Eugenia_89 Start: 64199, Stop: 63966, Start Num: 12

Candidate Starts for Eugenia_89:

(6, 64463), (7, 64436), (10, 64256), (Start: 11 @64226 has 199 MA's), (Start: 12 @64199 has 23 MA's), (13, 64142), (14, 64121), (15, 64082), (16, 64064), (17, 64043),

Gene: Fang_88 Start: 63934, Stop: 63674, Start Num: 11

Candidate Starts for Fang_88:

(6, 64171), (10, 63964), (Start: 11 @63934 has 199 MA's), (Start: 12 @63907 has 23 MA's), (13, 63850), (14, 63829), (15, 63790), (16, 63772), (17, 63751),

Gene: FluffyNinja_88 Start: 63777, Stop: 63544, Start Num: 12

Candidate Starts for FluffyNinja_88:

(6, 64041), (10, 63834), (Start: 11 @63804 has 199 MA's), (Start: 12 @63777 has 23 MA's), (13, 63720), (14, 63699), (15, 63660), (16, 63642), (17, 63621),

Gene: Fozzie_84 Start: 64130, Stop: 63870, Start Num: 11

Candidate Starts for Fozzie_84:

(6, 64367), (10, 64160), (Start: 11 @64130 has 199 MA's), (Start: 12 @64103 has 23 MA's), (13, 64046), (14, 64025), (15, 63986), (16, 63968), (17, 63947),

Gene: Frankicide_85 Start: 63630, Stop: 63370, Start Num: 11

Candidate Starts for Frankicide_85:

(4, 63909), (6, 63867), (7, 63840), (10, 63660), (Start: 11 @63630 has 199 MA's), (Start: 12 @63603 has 23 MA's), (13, 63546), (14, 63525), (15, 63486), (16, 63468), (17, 63447),

Gene: FriarPreacher_84 Start: 63503, Stop: 63243, Start Num: 11

Candidate Starts for FriarPreacher_84:

(4, 63782), (6, 63740), (7, 63713), (10, 63533), (Start: 11 @63503 has 199 MA's), (Start: 12 @63476 has 23 MA's), (13, 63419), (14, 63398), (15, 63359), (16, 63341), (17, 63320),

Gene: Fringe_91 Start: 64280, Stop: 64020, Start Num: 11

Candidate Starts for Fringe_91:

(4, 64559), (6, 64517), (7, 64490), (10, 64310), (Start: 11 @64280 has 199 MA's), (Start: 12 @64253 has 23 MA's), (13, 64196), (14, 64175), (15, 64136), (16, 64118), (17, 64097),

Gene: FugateOSU_87 Start: 64563, Stop: 64303, Start Num: 11

Candidate Starts for FugateOSU_87:

(6, 64800), (10, 64593), (Start: 11 @64563 has 199 MA's), (Start: 12 @64536 has 23 MA's), (13, 64479), (14, 64458), (15, 64419), (16, 64401), (17, 64380),

Gene: Gareth_87 Start: 63952, Stop: 63692, Start Num: 11
Candidate Starts for Gareth_87:
(4, 64231), (6, 64189), (7, 64162), (10, 63982), (Start: 11 @63952 has 199 MA's), (Start: 12 @63925 has 23 MA's), (13, 63868), (14, 63847), (15, 63808), (16, 63790), (17, 63769),

Gene: GeneCoco_87 Start: 64132, Stop: 63872, Start Num: 11
Candidate Starts for GeneCoco_87:
(4, 64411), (6, 64369), (7, 64342), (10, 64162), (Start: 11 @64132 has 199 MA's), (Start: 12 @64105 has 23 MA's), (13, 64048), (14, 64027), (15, 63988), (16, 63970), (17, 63949),

Gene: Giraffe_87 Start: 63956, Stop: 63696, Start Num: 11
Candidate Starts for Giraffe_87:
(6, 64193), (7, 64166), (10, 63986), (Start: 11 @63956 has 199 MA's), (Start: 12 @63929 has 23 MA's), (13, 63872), (14, 63851), (15, 63812), (16, 63794), (17, 63773),

Gene: Grand2040_85 Start: 63894, Stop: 63661, Start Num: 12
Candidate Starts for Grand2040_85:
(4, 64200), (6, 64158), (10, 63951), (Start: 11 @63921 has 199 MA's), (Start: 12 @63894 has 23 MA's), (13, 63837), (14, 63816), (15, 63777), (16, 63759), (17, 63738),

Gene: Gwilliam_87 Start: 64487, Stop: 64227, Start Num: 11
Candidate Starts for Gwilliam_87:
(4, 64766), (6, 64724), (7, 64697), (10, 64517), (Start: 11 @64487 has 199 MA's), (Start: 12 @64460 has 23 MA's), (13, 64403), (14, 64382), (15, 64343), (16, 64325), (17, 64304),

Gene: Gyarad_0086 Start: 63441, Stop: 63181, Start Num: 11
Candidate Starts for Gyarad_0086:
(4, 63720), (6, 63678), (7, 63651), (10, 63471), (Start: 11 @63441 has 199 MA's), (Start: 12 @63414 has 23 MA's), (13, 63357), (14, 63336), (15, 63297), (16, 63279), (17, 63258),

Gene: HSavage_85 Start: 63458, Stop: 63198, Start Num: 11
Candidate Starts for HSavage_85:
(6, 63695), (10, 63488), (Start: 11 @63458 has 199 MA's), (Start: 12 @63431 has 23 MA's), (13, 63374), (14, 63353), (15, 63314), (16, 63296), (17, 63275),

Gene: Haimas_84 Start: 63383, Stop: 63123, Start Num: 11
Candidate Starts for Haimas_84:
(6, 63620), (10, 63413), (Start: 11 @63383 has 199 MA's), (Start: 12 @63356 has 23 MA's), (13, 63299), (14, 63278), (15, 63239), (16, 63221), (17, 63200),

Gene: Haleema_86 Start: 63502, Stop: 63242, Start Num: 11
Candidate Starts for Haleema_86:
(4, 63781), (6, 63739), (7, 63712), (10, 63532), (Start: 11 @63502 has 199 MA's), (Start: 12 @63475 has 23 MA's), (13, 63418), (14, 63397), (15, 63358), (16, 63340), (17, 63319),

Gene: Hamish_84 Start: 63671, Stop: 63411, Start Num: 11
Candidate Starts for Hamish_84:
(6, 63908), (10, 63701), (Start: 11 @63671 has 199 MA's), (Start: 12 @63644 has 23 MA's), (13, 63587), (14, 63566), (15, 63527), (16, 63509), (17, 63488),

Gene: Hartsy_85 Start: 63620, Stop: 63360, Start Num: 11
Candidate Starts for Hartsy_85:

(4, 63899), (6, 63857), (7, 63830), (10, 63650), (Start: 11 @63620 has 199 MA's), (Start: 12 @63593 has 23 MA's), (13, 63536), (14, 63515), (15, 63476), (16, 63458), (17, 63437),

Gene: Harvey_84 Start: 63280, Stop: 63020, Start Num: 11

Candidate Starts for Harvey_84:

(4, 63559), (6, 63517), (10, 63310), (Start: 11 @63280 has 199 MA's), (Start: 12 @63253 has 23 MA's), (13, 63196), (14, 63175), (15, 63136), (16, 63118), (17, 63097),

Gene: Held_85 Start: 63401, Stop: 63141, Start Num: 11

Candidate Starts for Held_85:

(4, 63680), (6, 63638), (10, 63431), (Start: 11 @63401 has 199 MA's), (Start: 12 @63374 has 23 MA's), (13, 63317), (14, 63296), (15, 63257), (16, 63239), (17, 63218),

Gene: HenryJackson_87 Start: 64120, Stop: 63860, Start Num: 11

Candidate Starts for HenryJackson_87:

(4, 64399), (6, 64357), (7, 64330), (10, 64150), (Start: 11 @64120 has 199 MA's), (Start: 12 @64093 has 23 MA's), (13, 64036), (14, 64015), (15, 63976), (16, 63958), (17, 63937),

Gene: Hertubise_86 Start: 63762, Stop: 63502, Start Num: 11

Candidate Starts for Hertubise_86:

(4, 64041), (6, 63999), (10, 63792), (Start: 11 @63762 has 199 MA's), (Start: 12 @63735 has 23 MA's), (13, 63678), (14, 63657), (15, 63618), (16, 63600), (17, 63579),

Gene: Hetaeria_87 Start: 63769, Stop: 63509, Start Num: 11

Candidate Starts for Hetaeria_87:

(4, 64048), (6, 64006), (10, 63799), (Start: 11 @63769 has 199 MA's), (Start: 12 @63742 has 23 MA's), (13, 63685), (14, 63664), (15, 63625), (16, 63607), (17, 63586),

Gene: HighStump_88 Start: 63907, Stop: 63647, Start Num: 11

Candidate Starts for HighStump_88:

(6, 64144), (7, 64117), (10, 63937), (Start: 11 @63907 has 199 MA's), (Start: 12 @63880 has 23 MA's), (13, 63823), (14, 63802), (15, 63763), (16, 63745), (17, 63724),

Gene: Hocus_85 Start: 63421, Stop: 63161, Start Num: 11

Candidate Starts for Hocus_85:

(4, 63700), (6, 63658), (7, 63631), (10, 63451), (Start: 11 @63421 has 199 MA's), (Start: 12 @63394 has 23 MA's), (13, 63337), (14, 63316), (15, 63277), (16, 63259), (17, 63238),

Gene: ImtiyazSitla_88 Start: 63899, Stop: 63666, Start Num: 12

Candidate Starts for ImtiyazSitla_88:

(6, 64163), (10, 63956), (Start: 11 @63926 has 199 MA's), (Start: 12 @63899 has 23 MA's), (13, 63842), (14, 63821), (15, 63782), (16, 63764), (17, 63743),

Gene: Inchworm_88 Start: 63794, Stop: 63534, Start Num: 11

Candidate Starts for Inchworm_88:

(6, 64031), (10, 63824), (Start: 11 @63794 has 199 MA's), (Start: 12 @63767 has 23 MA's), (13, 63710), (14, 63689), (15, 63650), (16, 63632), (17, 63611),

Gene: Inverness_85 Start: 63595, Stop: 63335, Start Num: 11

Candidate Starts for Inverness_85:

(4, 63874), (6, 63832), (7, 63805), (10, 63625), (Start: 11 @63595 has 199 MA's), (Start: 12 @63568 has 23 MA's), (13, 63511), (14, 63490), (15, 63451), (16, 63433), (17, 63412),

Gene: Iridoclysis_86 Start: 63685, Stop: 63425, Start Num: 11

Candidate Starts for Iridoclysis_86:

(6, 63922), (10, 63715), (Start: 11 @63685 has 199 MA's), (Start: 12 @63658 has 23 MA's), (13, 63601), (14, 63580), (15, 63541), (16, 63523), (17, 63502),

Gene: IsaacEli_89 Start: 63925, Stop: 63665, Start Num: 11

Candidate Starts for IsaacEli_89:

(4, 64204), (6, 64162), (10, 63955), (Start: 11 @63925 has 199 MA's), (Start: 12 @63898 has 23 MA's), (13, 63841), (14, 63820), (15, 63781), (16, 63763), (17, 63742),

Gene: JDog_86 Start: 63955, Stop: 63695, Start Num: 11

Candidate Starts for JDog_86:

(4, 64234), (6, 64192), (7, 64165), (10, 63985), (Start: 11 @63955 has 199 MA's), (Start: 12 @63928 has 23 MA's), (13, 63871), (14, 63850), (15, 63811), (16, 63793), (17, 63772),

Gene: JacAttac_87 Start: 63399, Stop: 63139, Start Num: 11

Candidate Starts for JacAttac_87:

(6, 63636), (10, 63429), (Start: 11 @63399 has 199 MA's), (Start: 12 @63372 has 23 MA's), (13, 63315), (14, 63294), (15, 63255), (16, 63237), (17, 63216),

Gene: JakeO_88 Start: 63683, Stop: 63423, Start Num: 11

Candidate Starts for JakeO_88:

(4, 63962), (6, 63920), (7, 63893), (10, 63713), (Start: 11 @63683 has 199 MA's), (Start: 12 @63656 has 23 MA's), (13, 63599), (14, 63578), (15, 63539), (16, 63521), (17, 63500),

Gene: JangoPhett_85 Start: 63759, Stop: 63499, Start Num: 11

Candidate Starts for JangoPhett_85:

(6, 63996), (10, 63789), (Start: 11 @63759 has 199 MA's), (Start: 12 @63732 has 23 MA's), (13, 63675), (14, 63654), (15, 63615), (16, 63597), (17, 63576),

Gene: Jillium_88 Start: 64115, Stop: 63855, Start Num: 11

Candidate Starts for Jillium_88:

(4, 64394), (6, 64352), (7, 64325), (10, 64145), (Start: 11 @64115 has 199 MA's), (Start: 12 @64088 has 23 MA's), (13, 64031), (14, 64010), (15, 63971), (16, 63953), (17, 63932),

Gene: Jiminy_87 Start: 63619, Stop: 63359, Start Num: 11

Candidate Starts for Jiminy_87:

(4, 63898), (6, 63856), (10, 63649), (Start: 11 @63619 has 199 MA's), (Start: 12 @63592 has 23 MA's), (13, 63535), (14, 63514), (15, 63475), (16, 63457), (17, 63436),

Gene: Jiraiya_91 Start: 63703, Stop: 63443, Start Num: 11

Candidate Starts for Jiraiya_91:

(4, 63982), (6, 63940), (7, 63913), (10, 63733), (Start: 11 @63703 has 199 MA's), (Start: 12 @63676 has 23 MA's), (13, 63619), (14, 63598), (15, 63559), (16, 63541), (17, 63520),

Gene: KLucky39_85 Start: 63478, Stop: 63218, Start Num: 11

Candidate Starts for KLucky39_85:

(4, 63757), (6, 63715), (7, 63688), (10, 63508), (Start: 11 @63478 has 199 MA's), (Start: 12 @63451 has 23 MA's), (13, 63394), (14, 63373), (15, 63334), (16, 63316), (17, 63295),

Gene: Kahve_87 Start: 64118, Stop: 63858, Start Num: 11

Candidate Starts for Kahve_87:

(4, 64397), (6, 64355), (7, 64328), (10, 64148), (Start: 11 @64118 has 199 MA's), (Start: 12 @64091 has 23 MA's), (13, 64034), (14, 64013), (15, 63974), (16, 63956), (17, 63935),

Gene: Kailash_85 Start: 63818, Stop: 63558, Start Num: 11

Candidate Starts for Kailash_85:

(6, 64055), (10, 63848), (Start: 11 @63818 has 199 MA's), (Start: 12 @63791 has 23 MA's), (13, 63734), (14, 63713), (15, 63674), (16, 63656), (17, 63635),

Gene: Katniss_89 Start: 63507, Stop: 63274, Start Num: 12

Candidate Starts for Katniss_89:

(6, 63771), (10, 63564), (Start: 11 @63534 has 199 MA's), (Start: 12 @63507 has 23 MA's), (13, 63450), (14, 63429), (15, 63390), (16, 63372), (17, 63351),

Gene: Keitherie_90 Start: 64176, Stop: 63916, Start Num: 11

Candidate Starts for Keitherie_90:

(6, 64413), (10, 64206), (Start: 11 @64176 has 199 MA's), (Start: 12 @64149 has 23 MA's), (13, 64092), (14, 64071), (15, 64032), (16, 64014), (17, 63993),

Gene: Kikipoo_89 Start: 63925, Stop: 63665, Start Num: 11

Candidate Starts for Kikipoo_89:

(4, 64204), (6, 64162), (10, 63955), (Start: 11 @63925 has 199 MA's), (Start: 12 @63898 has 23 MA's), (13, 63841), (14, 63820), (15, 63781), (16, 63763), (17, 63742),

Gene: Kimbrough_88 Start: 63997, Stop: 63737, Start Num: 11

Candidate Starts for Kimbrough_88:

(4, 64276), (6, 64234), (7, 64207), (10, 64027), (Start: 11 @63997 has 199 MA's), (Start: 12 @63970 has 23 MA's), (13, 63913), (14, 63892), (15, 63853), (16, 63835), (17, 63814),

Gene: KingTut_78 Start: 60157, Stop: 59897, Start Num: 11

Candidate Starts for KingTut_78:

(6, 60394), (7, 60367), (10, 60187), (Start: 11 @60157 has 199 MA's), (Start: 12 @60130 has 23 MA's), (13, 60073), (14, 60052), (15, 60013), (16, 59995), (17, 59974),

Gene: KingVeVeVe_85 Start: 63131, Stop: 62871, Start Num: 11

Candidate Starts for KingVeVeVe_85:

(4, 63410), (6, 63368), (7, 63341), (10, 63161), (Start: 11 @63131 has 199 MA's), (Start: 12 @63104 has 23 MA's), (13, 63047), (14, 63026), (15, 62987), (16, 62969), (17, 62948),

Gene: KlimbOn_86 Start: 63437, Stop: 63177, Start Num: 11

Candidate Starts for KlimbOn_86:

(4, 63716), (6, 63674), (10, 63467), (Start: 11 @63437 has 199 MA's), (Start: 12 @63410 has 23 MA's), (13, 63353), (14, 63332), (15, 63293), (16, 63275), (17, 63254),

Gene: Kloppinator_87 Start: 63567, Stop: 63307, Start Num: 11

Candidate Starts for Kloppinator_87:

(6, 63804), (10, 63597), (Start: 11 @63567 has 199 MA's), (Start: 12 @63540 has 23 MA's), (13, 63483), (14, 63462), (15, 63423), (16, 63405), (17, 63384),

Gene: Kwadwo_86 Start: 63422, Stop: 63162, Start Num: 11

Candidate Starts for Kwadwo_86:

(6, 63659), (10, 63452), (Start: 11 @63422 has 199 MA's), (Start: 12 @63395 has 23 MA's), (13, 63338), (14, 63317), (15, 63278), (16, 63260), (17, 63239),

Gene: Kwksand96_88 Start: 63689, Stop: 63429, Start Num: 11

Candidate Starts for Kwksand96_88:

(6, 63926), (10, 63719), (Start: 11 @63689 has 199 MA's), (Start: 12 @63662 has 23 MA's), (13, 63605), (14, 63584), (15, 63545), (16, 63527), (17, 63506),

Gene: Labeouficaum_87 Start: 63502, Stop: 63242, Start Num: 11

Candidate Starts for Labeouficaum_87:

(6, 63739), (10, 63532), (Start: 11 @63502 has 199 MA's), (Start: 12 @63475 has 23 MA's), (13, 63418), (14, 63397), (15, 63358), (16, 63340), (17, 63319),

Gene: LasagnaCat_88 Start: 63804, Stop: 63544, Start Num: 11

Candidate Starts for LasagnaCat_88:

(6, 64041), (10, 63834), (Start: 11 @63804 has 199 MA's), (Start: 12 @63777 has 23 MA's), (13, 63720), (14, 63699), (15, 63660), (16, 63642), (17, 63621),

Gene: Lasso_86 Start: 63663, Stop: 63403, Start Num: 11

Candidate Starts for Lasso_86:

(4, 63942), (6, 63900), (7, 63873), (10, 63693), (Start: 11 @63663 has 199 MA's), (Start: 12 @63636 has 23 MA's), (13, 63579), (14, 63558), (15, 63519), (16, 63501), (17, 63480),

Gene: LeeLot_85 Start: 63980, Stop: 63747, Start Num: 12

Candidate Starts for LeeLot_85:

(4, 64286), (6, 64244), (7, 64217), (10, 64037), (Start: 11 @64007 has 199 MA's), (Start: 12 @63980 has 23 MA's), (13, 63923), (14, 63902), (15, 63863), (16, 63845), (17, 63824),

Gene: Lego3393_85 Start: 64124, Stop: 63864, Start Num: 11

Candidate Starts for Lego3393_85:

(6, 64361), (10, 64154), (Start: 11 @64124 has 199 MA's), (Start: 12 @64097 has 23 MA's), (13, 64040), (14, 64019), (16, 63962), (17, 63941),

Gene: Legolas_88 Start: 63751, Stop: 63491, Start Num: 11

Candidate Starts for Legolas_88:

(4, 64030), (6, 63988), (7, 63961), (10, 63781), (Start: 11 @63751 has 199 MA's), (Start: 12 @63724 has 23 MA's), (13, 63667), (14, 63646), (15, 63607), (16, 63589), (17, 63568),

Gene: LeiMonet_89 Start: 63858, Stop: 63625, Start Num: 12

Candidate Starts for LeiMonet_89:

(4, 64164), (6, 64122), (10, 63915), (Start: 11 @63885 has 199 MA's), (Start: 12 @63858 has 23 MA's), (13, 63801), (14, 63780), (15, 63741), (16, 63723), (17, 63702),

Gene: LemonSlice_87 Start: 63410, Stop: 63150, Start Num: 11

Candidate Starts for LemonSlice_87:

(6, 63647), (10, 63440), (Start: 11 @63410 has 199 MA's), (Start: 12 @63383 has 23 MA's), (13, 63326), (14, 63305), (15, 63266), (16, 63248), (17, 63227),

Gene: Longacauda_88 Start: 63904, Stop: 63644, Start Num: 11

Candidate Starts for Longacauda_88:

(4, 64183), (6, 64141), (7, 64114), (10, 63934), (Start: 11 @63904 has 199 MA's), (Start: 12 @63877 has 23 MA's), (13, 63820), (14, 63799), (15, 63760), (16, 63742), (17, 63721),

Gene: Lopsy_83 Start: 63143, Stop: 62883, Start Num: 11

Candidate Starts for Lopsy_83:

(6, 63380), (10, 63173), (Start: 11 @63143 has 199 MA's), (Start: 12 @63116 has 23 MA's), (13, 63059), (14, 63038), (15, 62999), (16, 62981), (17, 62960),

Gene: LostAndPhound_86 Start: 63925, Stop: 63692, Start Num: 12

Candidate Starts for LostAndPhound_86:

(4, 64231), (6, 64189), (7, 64162), (10, 63982), (Start: 11 @63952 has 199 MA's), (Start: 12 @63925 has 23 MA's), (13, 63868), (14, 63847), (15, 63808), (16, 63790), (17, 63769),

Gene: LuckyMarjie_84 Start: 63162, Stop: 62902, Start Num: 11

Candidate Starts for LuckyMarjie_84:

(4, 63441), (6, 63399), (7, 63372), (10, 63192), (Start: 11 @63162 has 199 MA's), (Start: 12 @63135 has 23 MA's), (13, 63078), (14, 63057), (15, 63018), (16, 63000), (17, 62979),

Gene: Lulwa_84 Start: 62776, Stop: 62516, Start Num: 11

Candidate Starts for Lulwa_84:

(4, 63055), (6, 63013), (10, 62806), (Start: 11 @62776 has 199 MA's), (Start: 12 @62749 has 23 MA's), (13, 62692), (14, 62671), (15, 62632), (16, 62614), (17, 62593),

Gene: Lumine_88 Start: 63601, Stop: 63341, Start Num: 11

Candidate Starts for Lumine_88:

(4, 63880), (6, 63838), (7, 63811), (10, 63631), (Start: 11 @63601 has 199 MA's), (Start: 12 @63574 has 23 MA's), (13, 63517), (14, 63496), (15, 63457), (16, 63439), (17, 63418),

Gene: MRabcd_87 Start: 63878, Stop: 63618, Start Num: 11

Candidate Starts for MRabcd_87:

(6, 64115), (10, 63908), (Start: 11 @63878 has 199 MA's), (Start: 12 @63851 has 23 MA's), (13, 63794), (14, 63773), (15, 63734), (16, 63716), (17, 63695),

Gene: Mag7_85 Start: 63362, Stop: 63102, Start Num: 11

Candidate Starts for Mag7_85:

(6, 63599), (10, 63392), (Start: 11 @63362 has 199 MA's), (Start: 12 @63335 has 23 MA's), (13, 63278), (14, 63257), (15, 63218), (16, 63200), (17, 63179),

Gene: Magic8_86 Start: 63730, Stop: 63470, Start Num: 11

Candidate Starts for Magic8_86:

(6, 63967), (10, 63760), (Start: 11 @63730 has 199 MA's), (Start: 12 @63703 has 23 MA's), (13, 63646), (14, 63625), (15, 63586), (16, 63568), (17, 63547),

Gene: Manad_86 Start: 63676, Stop: 63416, Start Num: 11

Candidate Starts for Manad_86:

(4, 63955), (6, 63913), (7, 63886), (10, 63706), (Start: 11 @63676 has 199 MA's), (13, 63592), (14, 63571), (15, 63532), (16, 63514), (17, 63493),

Gene: Maru_87 Start: 64014, Stop: 63754, Start Num: 11

Candidate Starts for Maru_87:

(4, 64293), (6, 64251), (10, 64044), (Start: 11 @64014 has 199 MA's), (Start: 12 @63987 has 23 MA's), (13, 63930), (14, 63909), (15, 63870), (16, 63852), (17, 63831),

Gene: Maskar_88 Start: 63899, Stop: 63666, Start Num: 12

Candidate Starts for Maskar_88:

(6, 64163), (10, 63956), (Start: 11 @63926 has 199 MA's), (Start: 12 @63899 has 23 MA's), (13, 63842), (14, 63821), (15, 63782), (16, 63764), (17, 63743),

Gene: Matalotodo_87 Start: 64383, Stop: 64150, Start Num: 12

Candidate Starts for Matalotodo_87:

(6, 64647), (7, 64620), (10, 64440), (Start: 11 @64410 has 199 MA's), (Start: 12 @64383 has 23 MA's), (13, 64326), (14, 64305), (15, 64266), (16, 64248), (17, 64227),

Gene: Mcshane_86 Start: 63424, Stop: 63164, Start Num: 11

Candidate Starts for Mcshane_86:

(6, 63661), (10, 63454), (Start: 11 @63424 has 199 MA's), (Start: 12 @63397 has 23 MA's), (13, 63340), (14, 63319), (15, 63280), (16, 63262), (17, 63241),

Gene: Mecca_87 Start: 63978, Stop: 63718, Start Num: 11

Candidate Starts for Mecca_87:

(4, 64257), (6, 64215), (7, 64188), (10, 64008), (Start: 11 @63978 has 199 MA's), (Start: 12 @63951 has 23 MA's), (13, 63894), (14, 63873), (15, 63834), (16, 63816), (17, 63795),

Gene: Megamind20_87 Start: 63361, Stop: 63128, Start Num: 12

Candidate Starts for Megamind20_87:

(4, 63667), (6, 63625), (7, 63598), (10, 63418), (Start: 11 @63388 has 199 MA's), (Start: 12 @63361 has 23 MA's), (13, 63304), (14, 63283), (15, 63244), (16, 63226), (17, 63205),

Gene: Megatron_88 Start: 64069, Stop: 63836, Start Num: 12

Candidate Starts for Megatron_88:

(4, 64375), (6, 64333), (10, 64126), (Start: 11 @64096 has 199 MA's), (Start: 12 @64069 has 23 MA's), (13, 64012), (14, 63991), (15, 63952), (16, 63934), (17, 63913),

Gene: Melc17_84 Start: 64046, Stop: 63786, Start Num: 11

Candidate Starts for Melc17_84:

(10, 64076), (Start: 11 @64046 has 199 MA's), (Start: 12 @64019 has 23 MA's), (13, 63962), (14, 63941), (15, 63902), (16, 63884), (17, 63863),

Gene: MelsMeow_86 Start: 63659, Stop: 63426, Start Num: 12

Candidate Starts for MelsMeow_86:

(6, 63923), (10, 63716), (Start: 11 @63686 has 199 MA's), (Start: 12 @63659 has 23 MA's), (13, 63602), (14, 63581), (15, 63542), (16, 63524), (17, 63503),

Gene: Mesh1_88 Start: 64142, Stop: 63882, Start Num: 11

Candidate Starts for Mesh1_88:

(4, 64421), (6, 64379), (7, 64352), (10, 64172), (Start: 11 @64142 has 199 MA's), (Start: 12 @64115 has 23 MA's), (13, 64058), (14, 64037), (15, 63998), (16, 63980), (17, 63959),

Gene: MichaelPhcott_85 Start: 63359, Stop: 63099, Start Num: 11

Candidate Starts for MichaelPhcott_85:

(6, 63596), (10, 63389), (Start: 11 @63359 has 199 MA's), (Start: 12 @63332 has 23 MA's), (13, 63275), (14, 63254), (15, 63215), (16, 63197), (17, 63176),

Gene: MiniBoss_83 Start: 62730, Stop: 62470, Start Num: 11

Candidate Starts for MiniBoss_83:

(4, 63009), (6, 62967), (7, 62940), (10, 62760), (Start: 11 @62730 has 199 MA's), (Start: 12 @62703 has 23 MA's), (13, 62646), (14, 62625), (15, 62586), (16, 62568), (17, 62547),

Gene: MitKao_87 Start: 63580, Stop: 63320, Start Num: 11

Candidate Starts for MitKao_87:

(4, 63859), (6, 63817), (10, 63610), (Start: 11 @63580 has 199 MA's), (Start: 12 @63553 has 23 MA's), (13, 63496), (14, 63475), (15, 63436), (16, 63418), (17, 63397),

Gene: Morgushi_84 Start: 63394, Stop: 63134, Start Num: 11

Candidate Starts for Morgushi_84:

(4, 63673), (6, 63631), (10, 63424), (Start: 11 @63394 has 199 MA's), (Start: 12 @63367 has 23 MA's), (13, 63310), (14, 63289), (15, 63250), (16, 63232), (17, 63211),

Gene: Mosaic_84 Start: 63576, Stop: 63316, Start Num: 11

Candidate Starts for Mosaic_84:

(4, 63855), (6, 63813), (7, 63786), (10, 63606), (Start: 11 @63576 has 199 MA's), (Start: 12 @63549 has 23 MA's), (13, 63492), (14, 63471), (15, 63432), (16, 63414), (17, 63393),

Gene: MrPhizzler_86 Start: 63847, Stop: 63614, Start Num: 12

Candidate Starts for MrPhizzler_86:

(4, 64153), (6, 64111), (7, 64084), (10, 63904), (Start: 11 @63874 has 199 MA's), (Start: 12 @63847 has 23 MA's), (13, 63790), (14, 63769), (15, 63730), (16, 63712), (17, 63691),

Gene: Mulan_86 Start: 63608, Stop: 63348, Start Num: 11

Candidate Starts for Mulan_86:

(6, 63845), (10, 63638), (Start: 11 @63608 has 199 MA's), (Start: 12 @63581 has 23 MA's), (13, 63524), (14, 63503), (15, 63464), (16, 63446), (17, 63425),

Gene: Murdoc_83 Start: 63687, Stop: 63427, Start Num: 11

Candidate Starts for Murdoc_83:

(6, 63924), (10, 63717), (Start: 11 @63687 has 199 MA's), (Start: 12 @63660 has 23 MA's), (13, 63603), (14, 63582), (15, 63543), (16, 63525), (17, 63504),

Gene: Mutante_88 Start: 63581, Stop: 63321, Start Num: 11

Candidate Starts for Mutante_88:

(6, 63818), (10, 63611), (Start: 11 @63581 has 199 MA's), (Start: 12 @63554 has 23 MA's), (13, 63497), (14, 63476), (15, 63437), (16, 63419), (17, 63398),

Gene: Nacho_0089 Start: 64652, Stop: 64392, Start Num: 11

Candidate Starts for Nacho_0089:

(4, 64931), (6, 64889), (7, 64862), (10, 64682), (Start: 11 @64652 has 199 MA's), (Start: 12 @64625 has 23 MA's), (13, 64568), (14, 64547), (15, 64508), (16, 64490), (17, 64469),

Gene: Nicole21_88 Start: 63714, Stop: 63454, Start Num: 11

Candidate Starts for Nicole21_88:

(6, 63951), (10, 63744), (Start: 11 @63714 has 199 MA's), (Start: 12 @63687 has 23 MA's), (13, 63630), (14, 63609), (15, 63570), (16, 63552), (17, 63531),

Gene: Numberten_86 Start: 63696, Stop: 63436, Start Num: 11

Candidate Starts for Numberten_86:

(4, 63975), (6, 63933), (7, 63906), (10, 63726), (Start: 11 @63696 has 199 MA's), (Start: 12 @63669 has 23 MA's), (13, 63612), (14, 63591), (15, 63552), (16, 63534), (17, 63513),

Gene: Nyala_86 Start: 63430, Stop: 63170, Start Num: 11

Candidate Starts for Nyala_86:

(6, 63667), (10, 63460), (Start: 11 @63430 has 199 MA's), (Start: 12 @63403 has 23 MA's), (13, 63346), (14, 63325), (15, 63286), (16, 63268), (17, 63247),

Gene: OSmaximus_88 Start: 64261, Stop: 64001, Start Num: 11

Candidate Starts for OSmaximus_88:

(6, 64498), (10, 64291), (Start: 11 @64261 has 199 MA's), (Start: 12 @64234 has 23 MA's), (13, 64177), (14, 64156), (15, 64117), (16, 64099), (17, 64078),

Gene: Olak_87 Start: 63594, Stop: 63334, Start Num: 11

Candidate Starts for Olak_87:

(4, 63873), (6, 63831), (7, 63804), (10, 63624), (Start: 11 @63594 has 199 MA's), (Start: 12 @63567 has 23 MA's), (13, 63510), (14, 63489), (15, 63450), (16, 63432), (17, 63411),

Gene: Oline_86 Start: 63585, Stop: 63325, Start Num: 11

Candidate Starts for Oline_86:

(6, 63822), (10, 63615), (Start: 11 @63585 has 199 MA's), (Start: 12 @63558 has 23 MA's), (13, 63501), (14, 63480), (15, 63441), (16, 63423), (17, 63402),

Gene: Omniscient_88 Start: 64257, Stop: 64024, Start Num: 12

Candidate Starts for Omniscient_88:

(6, 64521), (10, 64314), (Start: 11 @64284 has 199 MA's), (Start: 12 @64257 has 23 MA's), (13, 64200), (14, 64179), (15, 64140), (16, 64122), (17, 64101),

Gene: Oosterbaan_87 Start: 63821, Stop: 63561, Start Num: 11

Candidate Starts for Oosterbaan_87:

(6, 64058), (10, 63851), (Start: 11 @63821 has 199 MA's), (Start: 12 @63794 has 23 MA's), (13, 63737), (14, 63716), (15, 63677), (16, 63659), (17, 63638),

Gene: Orfeu_87 Start: 63917, Stop: 63684, Start Num: 12

Candidate Starts for Orfeu_87:

(4, 64223), (6, 64181), (10, 63974), (Start: 11 @63944 has 199 MA's), (Start: 12 @63917 has 23 MA's), (13, 63860), (14, 63839), (15, 63800), (16, 63782), (17, 63761),

Gene: Orion_85 Start: 63514, Stop: 63254, Start Num: 11

Candidate Starts for Orion_85:

(6, 63751), (10, 63544), (Start: 11 @63514 has 199 MA's), (Start: 12 @63487 has 23 MA's), (13, 63430), (14, 63409), (15, 63370), (16, 63352), (17, 63331),

Gene: Orwigg_87 Start: 63350, Stop: 63090, Start Num: 11

Candidate Starts for Orwigg_87:

(4, 63629), (6, 63587), (7, 63560), (10, 63380), (Start: 11 @63350 has 199 MA's), (Start: 12 @63323 has 23 MA's), (13, 63266), (14, 63245), (15, 63206), (16, 63188), (17, 63167),

Gene: PG1_85 Start: 64086, Stop: 63826, Start Num: 11

Candidate Starts for PG1_85:

(6, 64323), (10, 64116), (Start: 11 @64086 has 199 MA's), (Start: 12 @64059 has 23 MA's), (13, 64002), (14, 63981), (15, 63942), (16, 63924), (17, 63903),

Gene: Pacifista_88 Start: 63408, Stop: 63175, Start Num: 12

Candidate Starts for Pacifista_88:

(6, 63672), (10, 63465), (Start: 11 @63435 has 199 MA's), (Start: 12 @63408 has 23 MA's), (13, 63351), (14, 63330), (15, 63291), (16, 63273), (17, 63252),

Gene: Phareon_85 Start: 63127, Stop: 62867, Start Num: 11

Candidate Starts for Phareon_85:

(4, 63406), (6, 63364), (7, 63337), (10, 63157), (Start: 11 @63127 has 199 MA's), (Start: 12 @63100 has 23 MA's), (13, 63043), (14, 63022), (15, 62983), (16, 62965), (17, 62944),

Gene: PhatCats2014_86 Start: 64086, Stop: 63826, Start Num: 11

Candidate Starts for PhatCats2014_86:

(4, 64365), (6, 64323), (10, 64116), (Start: 11 @64086 has 199 MA's), (Start: 12 @64059 has 23 MA's), (13, 64002), (14, 63981), (15, 63942), (16, 63924), (17, 63903),

Gene: PhatLouie_89 Start: 63960, Stop: 63700, Start Num: 11

Candidate Starts for PhatLouie_89:

(4, 64239), (6, 64197), (10, 63990), (Start: 11 @63960 has 199 MA's), (Start: 12 @63933 has 23 MA's), (13, 63876), (14, 63855), (15, 63816), (16, 63798), (17, 63777),

Gene: PhenghisKhan_87 Start: 63591, Stop: 63331, Start Num: 11

Candidate Starts for PhenghisKhan_87:

(4, 63870), (6, 63828), (7, 63801), (10, 63621), (Start: 11 @63591 has 199 MA's), (Start: 12 @63564 has 23 MA's), (13, 63507), (14, 63486), (15, 63447), (16, 63429), (17, 63408),

Gene: Pherdinand_88 Start: 63806, Stop: 63546, Start Num: 11

Candidate Starts for Pherdinand_88:

(6, 64043), (10, 63836), (Start: 11 @63806 has 199 MA's), (Start: 12 @63779 has 23 MA's), (13, 63722), (14, 63701), (16, 63644), (17, 63623),

Gene: Phergie_87 Start: 63580, Stop: 63320, Start Num: 11

Candidate Starts for Phergie_87:

(4, 63859), (6, 63817), (7, 63790), (10, 63610), (Start: 11 @63580 has 199 MA's), (Start: 12 @63553 has 23 MA's), (13, 63496), (14, 63475), (15, 63436), (16, 63418), (17, 63397),

Gene: Phipps_85 Start: 63658, Stop: 63398, Start Num: 11

Candidate Starts for Phipps_85:

(4, 63937), (6, 63895), (7, 63868), (10, 63688), (Start: 11 @63658 has 199 MA's), (Start: 12 @63631 has 23 MA's), (13, 63574), (14, 63553), (15, 63514), (16, 63496), (17, 63475),

Gene: Phleuron_84 Start: 63392, Stop: 63132, Start Num: 11

Candidate Starts for Phleuron_84:

(6, 63629), (10, 63422), (Start: 11 @63392 has 199 MA's), (Start: 12 @63365 has 23 MA's), (13, 63308), (14, 63287), (15, 63248), (16, 63230), (17, 63209),

Gene: PhrankReynolds_85 Start: 63585, Stop: 63325, Start Num: 11

Candidate Starts for PhrankReynolds_85:

(4, 63864), (6, 63822), (7, 63795), (10, 63615), (Start: 11 @63585 has 199 MA's), (Start: 12 @63558 has 23 MA's), (13, 63501), (14, 63480), (15, 63441), (16, 63423), (17, 63402),

Gene: PhrodoBaggins_89 Start: 63961, Stop: 63701, Start Num: 11

Candidate Starts for PhrodoBaggins_89:

(6, 64198), (10, 63991), (Start: 11 @63961 has 199 MA's), (Start: 12 @63934 has 23 MA's), (13, 63877), (14, 63856), (15, 63817), (16, 63799), (17, 63778),

Gene: PinheadLarry_86 Start: 63731, Stop: 63471, Start Num: 11

Candidate Starts for PinheadLarry_86:

(6, 63968), (10, 63761), (Start: 11 @63731 has 199 MA's), (Start: 12 @63704 has 23 MA's), (13, 63647), (14, 63626), (15, 63587), (16, 63569), (17, 63548),

Gene: Pinkman_86 Start: 63777, Stop: 63544, Start Num: 12

Candidate Starts for Pinkman_86:

(4, 64083), (6, 64041), (7, 64014), (10, 63834), (Start: 11 @63804 has 199 MA's), (Start: 12 @63777 has 23 MA's), (13, 63720), (14, 63699), (15, 63660), (16, 63642), (17, 63621),

Gene: Pipsqueak_84 Start: 63417, Stop: 63157, Start Num: 11

Candidate Starts for Pipsqueak_84:

(4, 63696), (6, 63654), (7, 63627), (10, 63447), (Start: 11 @63417 has 199 MA's), (Start: 12 @63390 has 23 MA's), (13, 63333), (14, 63312), (15, 63273), (16, 63255), (17, 63234),

Gene: Placalicious_85 Start: 64450, Stop: 64190, Start Num: 11

Candidate Starts for Placalicious_85:

(4, 64729), (6, 64687), (7, 64660), (10, 64480), (Start: 11 @64450 has 199 MA's), (Start: 12 @64423 has 23 MA's), (13, 64366), (14, 64345), (15, 64306), (16, 64288), (17, 64267),

Gene: Pops_84 Start: 63568, Stop: 63335, Start Num: 12

Candidate Starts for Pops_84:

(6, 63832), (10, 63625), (Start: 11 @63595 has 199 MA's), (Start: 12 @63568 has 23 MA's), (13, 63511), (14, 63490), (15, 63451), (16, 63433), (17, 63412),

Gene: Potter_82 Start: 63414, Stop: 63154, Start Num: 11

Candidate Starts for Potter_82:

(4, 63693), (6, 63651), (7, 63624), (10, 63444), (Start: 11 @63414 has 199 MA's), (Start: 12 @63387 has 23 MA's), (13, 63330), (14, 63309), (15, 63270), (16, 63252), (17, 63231),

Gene: Prickles_88 Start: 63783, Stop: 63523, Start Num: 11

Candidate Starts for Prickles_88:

(4, 64062), (6, 64020), (10, 63813), (Start: 11 @63783 has 199 MA's), (Start: 12 @63756 has 23 MA's), (13, 63699), (14, 63678), (15, 63639), (16, 63621), (17, 63600),

Gene: ProfessorX_85 Start: 63451, Stop: 63191, Start Num: 11

Candidate Starts for ProfessorX_85:

(4, 63730), (6, 63688), (10, 63481), (Start: 11 @63451 has 199 MA's), (Start: 12 @63424 has 23 MA's), (13, 63367), (14, 63346), (15, 63307), (16, 63289), (17, 63268),

Gene: Puhltonio_83 Start: 63688, Stop: 63428, Start Num: 11

Candidate Starts for Puhltonio_83:

(4, 63967), (6, 63925), (7, 63898), (10, 63718), (Start: 11 @63688 has 199 MA's), (Start: 12 @63661 has 23 MA's), (13, 63604), (14, 63583), (15, 63544), (16, 63526), (17, 63505),

Gene: QueenBeane_87 Start: 63737, Stop: 63477, Start Num: 11

Candidate Starts for QueenBeane_87:

(6, 63974), (10, 63767), (Start: 11 @63737 has 199 MA's), (Start: 12 @63710 has 23 MA's), (13, 63653), (14, 63632), (15, 63593), (16, 63575), (17, 63554),

Gene: Quisquilliae_89 Start: 63748, Stop: 63488, Start Num: 11

Candidate Starts for Quisquilliae_89:

(4, 64027), (6, 63985), (7, 63958), (10, 63778), (Start: 11 @63748 has 199 MA's), (Start: 12 @63721 has 23 MA's), (13, 63664), (14, 63643), (15, 63604), (16, 63586), (17, 63565),

Gene: RedMaple_86 Start: 64351, Stop: 64091, Start Num: 11

Candidate Starts for RedMaple_86:

(4, 64630), (6, 64588), (7, 64561), (10, 64381), (Start: 11 @64351 has 199 MA's), (Start: 12 @64324 has 23 MA's), (13, 64267), (14, 64246), (15, 64207), (16, 64189), (17, 64168),

Gene: Ricotta_84 Start: 63406, Stop: 63173, Start Num: 12

Candidate Starts for Ricotta_84:

(6, 63670), (10, 63463), (Start: 11 @63433 has 199 MA's), (Start: 12 @63406 has 23 MA's), (13, 63349), (14, 63328), (15, 63289), (16, 63271), (17, 63250),

Gene: Riggan_88 Start: 63918, Stop: 63658, Start Num: 11

Candidate Starts for Riggan_88:

(4, 64197), (6, 64155), (10, 63948), (Start: 11 @63918 has 199 MA's), (Start: 12 @63891 has 23 MA's), (13, 63834), (14, 63813), (15, 63774), (16, 63756), (17, 63735),

Gene: Robyn_89 Start: 64176, Stop: 63916, Start Num: 11

Candidate Starts for Robyn_89:

(4, 64455), (6, 64413), (7, 64386), (10, 64206), (Start: 11 @64176 has 199 MA's), (Start: 12 @64149 has 23 MA's), (13, 64092), (14, 64071), (16, 64014), (17, 63993),

Gene: Roliet_84 Start: 62778, Stop: 62518, Start Num: 11

Candidate Starts for Roliet_84:

(4, 63057), (6, 63015), (7, 62988), (10, 62808), (Start: 11 @62778 has 199 MA's), (Start: 12 @62751 has 23 MA's), (13, 62694), (14, 62673), (15, 62634), (16, 62616), (17, 62595),

Gene: Roy17_84 Start: 63143, Stop: 62883, Start Num: 11

Candidate Starts for Roy17_84:

(4, 63422), (6, 63380), (7, 63353), (10, 63173), (Start: 11 @63143 has 199 MA's), (Start: 12 @63116 has 23 MA's), (13, 63059), (14, 63038), (15, 62999), (16, 62981), (17, 62960),

Gene: SDcharge11_86 Start: 63071, Stop: 62811, Start Num: 11

Candidate Starts for SDcharge11_86:

(4, 63350), (6, 63308), (10, 63101), (Start: 11 @63071 has 199 MA's), (Start: 12 @63044 has 23 MA's), (13, 62987), (14, 62966), (15, 62927), (16, 62909), (17, 62888),

Gene: Samaymay_87 Start: 63737, Stop: 63477, Start Num: 11

Candidate Starts for Samaymay_87:

(6, 63974), (10, 63767), (Start: 11 @63737 has 199 MA's), (Start: 12 @63710 has 23 MA's), (13, 63653), (14, 63632), (15, 63593), (16, 63575), (17, 63554),

Gene: SassyCat97_85 Start: 63405, Stop: 63145, Start Num: 11

Candidate Starts for SassyCat97_85:

(4, 63684), (6, 63642), (7, 63615), (10, 63435), (Start: 11 @63405 has 199 MA's), (Start: 12 @63378 has 23 MA's), (13, 63321), (14, 63300), (15, 63261), (16, 63243), (17, 63222),

Gene: Schadenfreude_87 Start: 63296, Stop: 63036, Start Num: 11

Candidate Starts for Schadenfreude_87:

(2, 63632), (6, 63530), (10, 63326), (Start: 11 @63296 has 199 MA's), (Start: 12 @63269 has 23 MA's), (13, 63212), (14, 63191), (15, 63152), (16, 63134), (17, 63113),

Gene: Schueller_86 Start: 63652, Stop: 63419, Start Num: 12

Candidate Starts for Schueller_86:

(6, 63916), (10, 63709), (Start: 11 @63679 has 199 MA's), (Start: 12 @63652 has 23 MA's), (13, 63595), (14, 63574), (15, 63535), (16, 63517), (17, 63496),

Gene: Scoot17C_87 Start: 63518, Stop: 63258, Start Num: 11

Candidate Starts for Scoot17C_87:

(6, 63755), (10, 63548), (Start: 11 @63518 has 199 MA's), (Start: 12 @63491 has 23 MA's), (13, 63434), (14, 63413), (15, 63374), (16, 63356), (17, 63335),

Gene: Scrick_86 Start: 63419, Stop: 63159, Start Num: 11

Candidate Starts for Scrick_86:

(6, 63656), (10, 63449), (Start: 11 @63419 has 199 MA's), (Start: 12 @63392 has 23 MA's), (13, 63335), (14, 63314), (15, 63275), (16, 63257), (17, 63236),

Gene: Selr12_88 Start: 63433, Stop: 63200, Start Num: 12

Candidate Starts for Selr12_88:

(4, 63739), (6, 63697), (7, 63670), (10, 63490), (Start: 11 @63460 has 199 MA's), (Start: 12 @63433 has 23 MA's), (13, 63376), (14, 63355), (15, 63316), (16, 63298), (17, 63277),

Gene: Serendipity_86 Start: 63891, Stop: 63631, Start Num: 11

Candidate Starts for Serendipity_86:

(4, 64170), (6, 64128), (7, 64101), (10, 63921), (Start: 11 @63891 has 199 MA's), (Start: 12 @63864 has 23 MA's), (13, 63807), (14, 63786), (15, 63747), (16, 63729), (17, 63708),

Gene: Serpentine_0088 Start: 63972, Stop: 63712, Start Num: 11

Candidate Starts for Serpentine_0088:

(4, 64251), (6, 64209), (7, 64182), (10, 64002), (Start: 11 @63972 has 199 MA's), (Start: 12 @63945 has 23 MA's), (13, 63888), (14, 63867), (15, 63828), (16, 63810), (17, 63789),

Gene: ShiVal_85 Start: 63442, Stop: 63182, Start Num: 11

Candidate Starts for ShiVal_85:

(6, 63679), (10, 63472), (Start: 11 @63442 has 199 MA's), (Start: 12 @63415 has 23 MA's), (13, 63358), (14, 63337), (15, 63298), (16, 63280), (17, 63259),

Gene: Sigman_86 Start: 63372, Stop: 63139, Start Num: 12

Candidate Starts for Sigman_86:

(6, 63636), (10, 63429), (Start: 11 @63399 has 199 MA's), (Start: 12 @63372 has 23 MA's), (13, 63315), (14, 63294), (15, 63255), (16, 63237), (17, 63216),

Gene: Simielle_86 Start: 63384, Stop: 63124, Start Num: 11

Candidate Starts for Simielle_86:

(4, 63663), (6, 63621), (7, 63594), (10, 63414), (Start: 11 @63384 has 199 MA's), (Start: 12 @63357 has 23 MA's), (13, 63300), (14, 63279), (15, 63240), (16, 63222), (17, 63201),

Gene: Skippy_87 Start: 63813, Stop: 63553, Start Num: 11

Candidate Starts for Skippy_87:

(4, 64092), (6, 64050), (7, 64023), (10, 63843), (Start: 11 @63813 has 199 MA's), (Start: 12 @63786 has 23 MA's), (13, 63729), (14, 63708), (15, 63669), (16, 63651), (17, 63630),

Gene: Slatt_87 Start: 63700, Stop: 63440, Start Num: 11

Candidate Starts for Slatt_87:

(6, 63937), (10, 63730), (Start: 11 @63700 has 199 MA's), (Start: 12 @63673 has 23 MA's), (13, 63616), (14, 63595), (15, 63556), (16, 63538), (17, 63517),

Gene: Soile_88 Start: 63938, Stop: 63678, Start Num: 11

Candidate Starts for Soile_88:

(6, 64175), (10, 63968), (Start: 11 @63938 has 199 MA's), (Start: 12 @63911 has 23 MA's), (13, 63854), (14, 63833), (15, 63794), (16, 63776), (17, 63755),

Gene: Solosis_85 Start: 63406, Stop: 63146, Start Num: 11

Candidate Starts for Solosis_85:

(6, 63643), (7, 63616), (10, 63436), (Start: 11 @63406 has 199 MA's), (Start: 12 @63379 has 23 MA's), (13, 63322), (14, 63301), (15, 63262), (16, 63244), (17, 63223),

Gene: Sophia_85 Start: 63394, Stop: 63134, Start Num: 11

Candidate Starts for Sophia_85:

(6, 63631), (10, 63424), (Start: 11 @63394 has 199 MA's), (Start: 12 @63367 has 23 MA's), (13, 63310), (14, 63289), (15, 63250), (16, 63232), (17, 63211),

Gene: Soto_84 Start: 63111, Stop: 62851, Start Num: 11

Candidate Starts for Soto_84:

(4, 63390), (6, 63348), (10, 63141), (Start: 11 @63111 has 199 MA's), (Start: 12 @63084 has 23 MA's), (13, 63027), (14, 63006), (15, 62967), (16, 62949), (17, 62928),

Gene: Spartan300_86 Start: 63656, Stop: 63396, Start Num: 11

Candidate Starts for Spartan300_86:

(4, 63935), (6, 63893), (7, 63866), (10, 63686), (Start: 11 @63656 has 199 MA's), (Start: 12 @63629 has 23 MA's), (13, 63572), (14, 63551), (15, 63512), (16, 63494), (17, 63473),

Gene: Squid_86 Start: 63685, Stop: 63425, Start Num: 11

Candidate Starts for Squid_86:

(4, 63964), (6, 63922), (7, 63895), (10, 63715), (Start: 11 @63685 has 199 MA's), (Start: 12 @63658 has 23 MA's), (13, 63601), (14, 63580), (15, 63541), (16, 63523), (17, 63502),

Gene: Squiggle_86 Start: 63413, Stop: 63153, Start Num: 11

Candidate Starts for Squiggle_86:

(6, 63650), (10, 63443), (Start: 11 @63413 has 199 MA's), (Start: 12 @63386 has 23 MA's), (13, 63329), (14, 63308), (15, 63269), (16, 63251), (17, 63230),

Gene: StAugustine_84 Start: 63685, Stop: 63476, Start Num: 12

Candidate Starts for StAugustine_84:

(8, 63847), (9, 63775), (Start: 12 @63685 has 23 MA's), (13, 63625), (15, 63568),

Gene: Struggle_87 Start: 63511, Stop: 63251, Start Num: 11

Candidate Starts for Struggle_87:

(4, 63790), (6, 63748), (10, 63541), (Start: 11 @63511 has 199 MA's), (Start: 12 @63484 has 23 MA's), (13, 63427), (14, 63406), (15, 63367), (16, 63349), (17, 63328),

Gene: Suffolk_83 Start: 63407, Stop: 63147, Start Num: 11

Candidate Starts for Suffolk_83:

(4, 63686), (6, 63644), (7, 63617), (10, 63437), (Start: 11 @63407 has 199 MA's), (Start: 12 @63380 has 23 MA's), (13, 63323), (14, 63302), (15, 63263), (16, 63245), (17, 63224),

Gene: Surely_87 Start: 63976, Stop: 63716, Start Num: 11

Candidate Starts for Surely_87:

(6, 64213), (10, 64006), (Start: 11 @63976 has 199 MA's), (Start: 12 @63949 has 23 MA's), (13, 63892), (14, 63871), (15, 63832), (16, 63814), (17, 63793),

Gene: Swiphy_91 Start: 63960, Stop: 63700, Start Num: 11

Candidate Starts for Swiphy_91:

(4, 64239), (6, 64197), (10, 63990), (Start: 11 @63960 has 199 MA's), (Start: 12 @63933 has 23 MA's), (13, 63876), (14, 63855), (15, 63816), (16, 63798), (17, 63777),

Gene: Swish_88 Start: 63822, Stop: 63562, Start Num: 11

Candidate Starts for Swish_88:

(6, 64059), (10, 63852), (Start: 11 @63822 has 199 MA's), (Start: 12 @63795 has 23 MA's), (13, 63738), (14, 63717), (15, 63678), (16, 63660), (17, 63639),

Gene: TallGrassMM_86 Start: 63471, Stop: 63211, Start Num: 11

Candidate Starts for TallGrassMM_86:

(6, 63708), (7, 63681), (10, 63501), (Start: 11 @63471 has 199 MA's), (Start: 12 @63444 has 23 MA's), (13, 63387), (14, 63366), (15, 63327), (16, 63309), (17, 63288),

Gene: Telesworld_85 Start: 63548, Stop: 63288, Start Num: 11

Candidate Starts for Telesworld_85:

(6, 63785), (10, 63578), (Start: 11 @63548 has 199 MA's), (Start: 12 @63521 has 23 MA's), (13, 63464), (14, 63443), (15, 63404), (16, 63386), (17, 63365),

Gene: Thora_85 Start: 63925, Stop: 63665, Start Num: 11

Candidate Starts for Thora_85:

(6, 64162), (10, 63955), (Start: 11 @63925 has 199 MA's), (Start: 12 @63898 has 23 MA's), (13, 63841), (14, 63820), (15, 63781), (16, 63763), (17, 63742),

Gene: ThreeOh3D2_88 Start: 64079, Stop: 63819, Start Num: 11

Candidate Starts for ThreeOh3D2_88:

(6, 64316), (10, 64109), (Start: 11 @64079 has 199 MA's), (Start: 12 @64052 has 23 MA's), (13, 63995), (14, 63974), (15, 63935), (16, 63917), (17, 63896),

Gene: Thunderbird_87 Start: 63641, Stop: 63408, Start Num: 12

Candidate Starts for Thunderbird_87:

(6, 63905), (7, 63878), (10, 63698), (Start: 11 @63668 has 199 MA's), (Start: 12 @63641 has 23 MA's), (13, 63584), (14, 63563), (15, 63524), (16, 63506), (17, 63485),

Gene: TomBombadil_87 Start: 63969, Stop: 63709, Start Num: 11

Candidate Starts for TomBombadil_87:

(4, 64248), (6, 64206), (10, 63999), (Start: 11 @63969 has 199 MA's), (Start: 12 @63942 has 23 MA's), (13, 63885), (14, 63864), (15, 63825), (16, 63807), (17, 63786),

Gene: Toni_86 Start: 63871, Stop: 63611, Start Num: 11

Candidate Starts for Toni_86:

(4, 64150), (6, 64108), (7, 64081), (10, 63901), (Start: 11 @63871 has 199 MA's), (Start: 12 @63844 has 23 MA's), (13, 63787), (14, 63766), (15, 63727), (16, 63709), (17, 63688),

Gene: Tooj_84 Start: 63085, Stop: 62825, Start Num: 11

Candidate Starts for Tooj_84:

(4, 63364), (6, 63322), (10, 63115), (Start: 11 @63085 has 199 MA's), (Start: 12 @63058 has 23 MA's), (13, 63001), (14, 62980), (15, 62941), (16, 62923), (17, 62902),

Gene: True_85 Start: 63418, Stop: 63158, Start Num: 11

Candidate Starts for True_85:

(6, 63655), (10, 63448), (Start: 11 @63418 has 199 MA's), (Start: 12 @63391 has 23 MA's), (13, 63334), (14, 63313), (15, 63274), (16, 63256), (17, 63235),

Gene: Trypo_87 Start: 64113, Stop: 63880, Start Num: 12

Candidate Starts for Trypo_87:

(4, 64419), (6, 64377), (7, 64350), (10, 64170), (Start: 11 @64140 has 199 MA's), (Start: 12 @64113 has 23 MA's), (13, 64056), (14, 64035), (15, 63996), (16, 63978), (17, 63957),

Gene: TyrionL_87 Start: 63502, Stop: 63242, Start Num: 11

Candidate Starts for TyrionL_87:

(6, 63739), (10, 63532), (Start: 11 @63502 has 199 MA's), (Start: 12 @63475 has 23 MA's), (13, 63418), (14, 63397), (15, 63358), (16, 63340), (17, 63319),

Gene: UAch1_88 Start: 63769, Stop: 63509, Start Num: 11

Candidate Starts for UAch1_88:

(4, 64048), (6, 64006), (10, 63799), (Start: 11 @63769 has 199 MA's), (Start: 12 @63742 has 23 MA's), (13, 63685), (14, 63664), (15, 63625), (16, 63607), (17, 63586),

Gene: UncleHowie_83 Start: 63106, Stop: 62846, Start Num: 11

Candidate Starts for UncleHowie_83:

(4, 63385), (6, 63343), (7, 63316), (10, 63136), (Start: 11 @63106 has 199 MA's), (Start: 12 @63079 has 23 MA's), (13, 63022), (14, 63001), (15, 62962), (16, 62944), (17, 62923),

Gene: Vaishali24_88 Start: 63848, Stop: 63615, Start Num: 12

Candidate Starts for Vaishali24_88:

(1, 64229), (2, 64211), (6, 64109), (10, 63905), (Start: 11 @63875 has 199 MA's), (Start: 12 @63848 has 23 MA's), (13, 63791), (14, 63770), (16, 63713), (17, 63692),

Gene: Vaticameos_84 Start: 61975, Stop: 61715, Start Num: 11

Candidate Starts for Vaticameos_84:

(4, 62254), (6, 62212), (10, 62005), (Start: 11 @61975 has 199 MA's), (Start: 12 @61948 has 23 MA's), (13, 61891), (14, 61870), (15, 61831), (16, 61813), (17, 61792),

Gene: Veritas_86 Start: 63556, Stop: 63323, Start Num: 12

Candidate Starts for Veritas_86:

(6, 63820), (10, 63613), (Start: 11 @63583 has 199 MA's), (Start: 12 @63556 has 23 MA's), (13, 63499), (14, 63478), (15, 63439), (16, 63421), (17, 63400),

Gene: Virapocalypse_88 Start: 63768, Stop: 63508, Start Num: 11

Candidate Starts for Virapocalypse_88:

(6, 64005), (10, 63798), (Start: 11 @63768 has 199 MA's), (Start: 12 @63741 has 23 MA's), (13, 63684), (14, 63663), (15, 63624), (16, 63606), (17, 63585),

Gene: Virgeve_85 Start: 63387, Stop: 63127, Start Num: 11

Candidate Starts for Virgeve_85:

(4, 63666), (6, 63624), (7, 63597), (10, 63417), (Start: 11 @63387 has 199 MA's), (Start: 12 @63360 has 23 MA's), (13, 63303), (14, 63282), (15, 63243), (16, 63225), (17, 63204),

Gene: Vista_86 Start: 63581, Stop: 63321, Start Num: 11

Candidate Starts for Vista_86:

(6, 63818), (10, 63611), (Start: 11 @63581 has 199 MA's), (Start: 12 @63554 has 23 MA's), (13, 63497), (14, 63476), (15, 63437), (16, 63419), (17, 63398),

Gene: Vivaldi_87 Start: 63847, Stop: 63587, Start Num: 11

Candidate Starts for Vivaldi_87:

(4, 64126), (6, 64084), (10, 63877), (Start: 11 @63847 has 199 MA's), (Start: 12 @63820 has 23 MA's), (13, 63763), (14, 63742), (15, 63703), (16, 63685), (17, 63664),

Gene: Vortex_85 Start: 63688, Stop: 63428, Start Num: 11

Candidate Starts for Vortex_85:

(4, 63967), (6, 63925), (7, 63898), (10, 63718), (Start: 11 @63688 has 199 MA's), (Start: 12 @63661 has 23 MA's), (13, 63604), (14, 63583), (15, 63544), (16, 63526), (17, 63505),

Gene: Wallhey_88 Start: 63689, Stop: 63429, Start Num: 11

Candidate Starts for Wallhey_88:

(6, 63926), (10, 63719), (Start: 11 @63689 has 199 MA's), (Start: 12 @63662 has 23 MA's), (13, 63605), (14, 63584), (15, 63545), (16, 63527), (17, 63506),

Gene: Waterdiva_88 Start: 63928, Stop: 63695, Start Num: 12

Candidate Starts for Waterdiva_88:

(4, 64234), (6, 64192), (7, 64165), (10, 63985), (Start: 11 @63955 has 199 MA's), (Start: 12 @63928 has 23 MA's), (13, 63871), (14, 63850), (15, 63811), (16, 63793), (17, 63772),

Gene: Weher20_84 Start: 64026, Stop: 63766, Start Num: 11

Candidate Starts for Weher20_84:

(4, 64305), (6, 64263), (7, 64236), (10, 64056), (Start: 11 @64026 has 199 MA's), (Start: 12 @63999 has 23 MA's), (13, 63942), (14, 63921), (15, 63882), (16, 63864), (17, 63843),

Gene: Windsor_87 Start: 63971, Stop: 63711, Start Num: 11

Candidate Starts for Windsor_87:

(6, 64208), (10, 64001), (Start: 11 @63971 has 199 MA's), (Start: 12 @63944 has 23 MA's), (13, 63887), (14, 63866), (15, 63827), (16, 63809), (17, 63788),

Gene: Xavier_86 Start: 63580, Stop: 63320, Start Num: 11

Candidate Starts for Xavier_86:

(4, 63859), (6, 63817), (10, 63610), (Start: 11 @63580 has 199 MA's), (Start: 12 @63553 has 23 MA's), (13, 63496), (14, 63475), (15, 63436), (16, 63418), (17, 63397),

Gene: Yoshand_88 Start: 63805, Stop: 63545, Start Num: 11

Candidate Starts for Yoshand_88:

(6, 64042), (10, 63835), (Start: 11 @63805 has 199 MA's), (Start: 12 @63778 has 23 MA's), (13, 63721), (14, 63700), (16, 63643), (17, 63622),

Gene: YouGoGlencoco_87 Start: 63695, Stop: 63435, Start Num: 11

Candidate Starts for YouGoGlencoco_87:

(4, 63974), (6, 63932), (7, 63905), (10, 63725), (Start: 11 @63695 has 199 MA's), (Start: 12 @63668 has 23 MA's), (13, 63611), (14, 63590), (15, 63551), (16, 63533), (17, 63512),

Gene: Zaider_88 Start: 64070, Stop: 63810, Start Num: 11

Candidate Starts for Zaider_88:

(6, 64307), (10, 64100), (Start: 11 @64070 has 199 MA's), (Start: 12 @64043 has 23 MA's), (13, 63986), (14, 63965), (15, 63926), (16, 63908), (17, 63887),

Gene: Zelda_87 Start: 63999, Stop: 63766, Start Num: 12

Candidate Starts for Zelda_87:

(4, 64305), (6, 64263), (7, 64236), (10, 64056), (Start: 11 @64026 has 199 MA's), (Start: 12 @63999 has 23 MA's), (13, 63942), (14, 63921), (15, 63882), (16, 63864), (17, 63843),

Gene: Zonia_87 Start: 64137, Stop: 63877, Start Num: 11

Candidate Starts for Zonia_87:

(4, 64416), (6, 64374), (7, 64347), (10, 64167), (Start: 11 @64137 has 199 MA's), (Start: 12 @64110 has 23 MA's), (13, 64053), (14, 64032), (15, 63993), (16, 63975), (17, 63954),