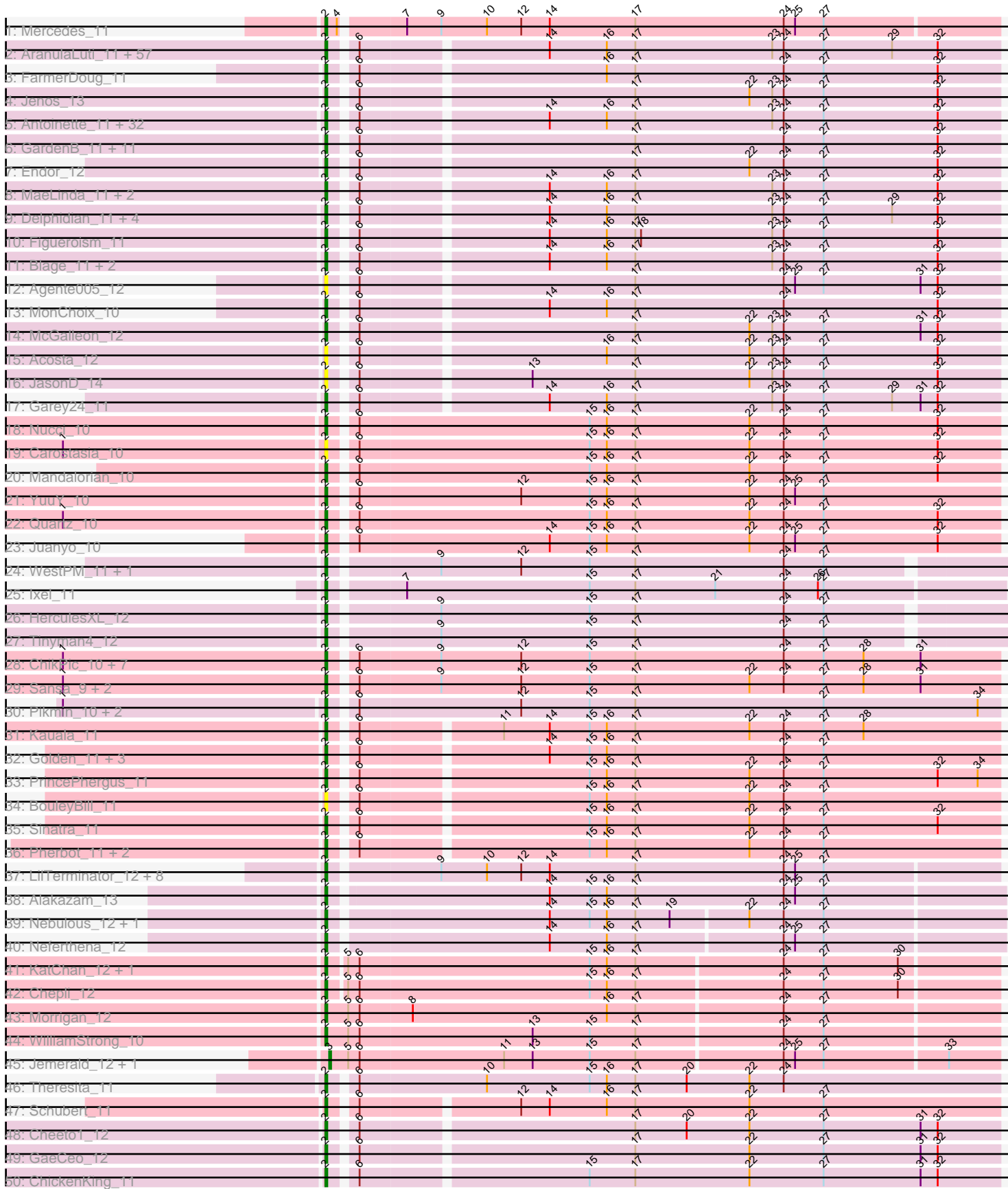


Pham 166474



Note: Tracks are now grouped by subcluster and scaled. Switching in subcluster is indicated by changes in track color. Track scale is now set by default to display the region 30 bp upstream of start 1 to 30 bp downstream of the last possible start. If this default region is judged to be packed too tightly with annotated starts, the track will be further scaled to only show that region of the ORF with annotated starts. This action will be indicated by adding "Zoomed" to the title. For starts, yellow indicates the location of called starts comprised solely of Glimmer/GeneMark auto-annotations, green indicates the location of called starts with at least 1 manual gene annotation.

Pham 166474 Report

This analysis was run 07/09/24 on database version 566.

Pham number 166474 has 186 members, 18 are drafts.

Phages represented in each track:

- Track 1 : Mercedes_11
- Track 2 : AranulaLuti_11, Ilzat_11, SJay_11, Teagan_11, Janus167_11, HanSolo_11, Duocatuli_11, Phriends_11, JasperRussell_11, Tenda_11, Pherferi_11, JeriBeth_11, Byron23_10, Gargoyle_11, Rog141_11, Sedgewig_11, MrWorldwide_11, Nagem_11, Shee_11, Christoph_11, Gubbabump_11, NickSell_11, Martin_12, Rapheph_11, Jerbirus_11, Kurt1_11, HankSprout_12, Kale_11, Bandik_11, Chako_11, Ludgate_11, TatarkaPM_11, PhredFlintston_11, Benjalauren_11, TinSulphur_11, StingRay_11, Riyhil_11, Inventa_11, KannH_11, Dothraki_11, Oats_11, Asta_11, ManRay_11, Gershwin_11, Pocket_11, TeddyBear_11, OldNelly_11, StirfryIV_11, BeautPeep30_11, ParleG_11, Aubergine_11, Stanktossa_11, Clancy_11, Espinosa_11, Winzigespinne_11, Papafritta_11, HungryHenry_11, Phireproof_11
- Track 3 : FarmerDoug_11
- Track 4 : Jenos_13
- Track 5 : Antoinette_11, Gelo_11, PuppyEggo_11, Raptor_11, Calix_11, ShaiHulud_11, Den3_11, AlexAdler_11, Etta_11, Lovelyunicorn_11, Klimt_11, Peep_11, Convict_11, Chamuel_11, Ioannes_11, Renzie_11, Knox_11, AxiPup_11, Superfresh_11, Greys_11, WildNOut_11, SonOfLevi_11, Strathdee_11, Dave_11, Nattles_11, BonesMcCoy_11, Velene_11, Vispistious_11, Thorongil_11, Erla_11, Baines_11, Alyxandracam_11, Oxtober96_11
- Track 6 : GardenB_11, Etna_11, Peppino_11, Raccoon_11, Leafus_11, KingJulien_11, BeeBee8_12, Balsa_11, Stormbreaker8_11, Redfield_11, Schnapsidee_11, Hamlet_11
- Track 7 : Endor_12
- Track 8 : MaeLinda_11, Zada_11, Robinson_11
- Track 9 : Delphidian_11, Bonino_11, SoilGremlin_11, Phiderman_11, MillyPhilly_11
- Track 10 : Figueroism_11
- Track 11 : Blage_11, Thompsone_11, BigRedClifford_11
- Track 12 : Agente005_12
- Track 13 : MonChoix_10
- Track 14 : McGalleon_12
- Track 15 : Acosta_12
- Track 16 : JasonD_14
- Track 17 : Garey24_11
- Track 18 : Nucci_10
- Track 19 : Carostasia_10
- Track 20 : Mandalorian_10

- Track 21 : YuuY_10
- Track 22 : Quartz_10
- Track 23 : Juanyo_10
- Track 24 : WestPM_11, Schimmels22_12
- Track 25 : Ixel_11
- Track 26 : HerculesXL_12
- Track 27 : Tinyman4_12
- Track 28 : ChikPic_10, Finny_10, Eleri_10, Glamour_9, MCubed_10, Shamu_10, Saratos_10, Zenitsu_10
- Track 29 : Sansa_9, ColaCorta_10, Andromedas_10
- Track 30 : Pikmin_10, Casey_10, Pajaza_10
- Track 31 : Kauala_11
- Track 32 : Golden_11, Guetzie_11, Lucky3_11, SirVictor_11
- Track 33 : PrincePhergus_11
- Track 34 : BouleyBill_11
- Track 35 : Sinatra_11
- Track 36 : Pherbot_11, Bustleton_11, Koji_11
- Track 37 : LilTerminator_12, Hasitha_12, CaptainRex_12, Greenlvy_12, Zepp_13, Fulton_12, Librie_12, QuadZero_12, Zayuliv_12
- Track 38 : Alakazam_13
- Track 39 : Nebulous_12, Clock_12
- Track 40 : Neferthena_12
- Track 41 : KatChan_12, Luna18_12
- Track 42 : Chepli_12
- Track 43 : Morigan_12
- Track 44 : WilliamStrong_10
- Track 45 : Jemerald_12, Juicer_12
- Track 46 : Theresita_11
- Track 47 : Schubert_11
- Track 48 : Cheeto1_12
- Track 49 : GaeCeo_12
- Track 50 : ChickenKing_11

Summary of Final Annotations (See graph section above for start numbers):

The start number called the most often in the published annotations is 2, it was called in 166 of the 168 non-draft genes in the pham.

Genes that call this "Most Annotated" start:

- Acosta_12, Agente005_12, Alakazam_13, AlexAdler_11, Alyxandracam_11, Andromedas_10, Antoinette_11, AranulaLuti_11, Asta_11, Aubergine_11, AxiPup_11, Baines_11, Balsa_11, Bandik_11, BeautPeep30_11, BeeBee8_12, Benjalauren_11, BigRedClifford_11, Blage_11, BonesMcCoy_11, Bonino_11, BouleyBill_11, Bustleton_11, Byron23_10, Calix_11, CaptainRex_12, Carostasia_10, Casey_10, Chako_11, Chamuel_11, Cheeto1_12, Chepli_12, ChickenKing_11, ChikPic_10, Christoph_11, Clancy_11, Clock_12, ColaCorta_10, Convict_11, Dave_11, Delphidian_11, Den3_11, Dothraki_11, Duocatuli_11, Eleri_10, Endor_12, Erla_11, Espinosa_11, Etna_11, Etta_11, FarmerDoug_11, Figueroism_11, Finny_10, Fulton_12, GaeCeo_12, GardenB_11, Garey24_11, Gargoyle_11, Gelo_11, Gershwin_11, Glamour_9, Golden_11, Greenlvy_12, Greys_11,

Gubbabump_11, Guetzie_11, Hamlet_11, HanSolo_11, HankSprout_12, Hasitha_12, HerculesXL_12, HungryHenry_11, Ilzat_11, Inventa_11, Ioannes_11, Ixel_11, Janus167_11, JasonD_14, JasperRussell_11, Jenos_13, Jerbirus_11, JeriBeth_11, Juanyo_10, Kale_11, KannH_11, KatChan_12, Kauala_11, KingJulien_11, Klimt_11, Knox_11, Koji_11, Kurt1_11, Leafus_11, Librie_12, LilTerminator_12, Lovelyunicorn_11, Lucky3_11, Ludgate_11, Luna18_12, MCubed_10, MaeLinda_11, ManRay_11, Mandalorian_10, Martin_12, McGalleon_12, Mercedes_11, MillyPhilly_11, MonChoix_10, Morigan_12, MrWorldwide_11, Nagem_11, Nattles_11, Nebulous_12, Neferthena_12, NickSell_11, Nucci_10, Oats_11, OldNelly_11, Oxtober96_11, Pajaza_10, Papafritta_11, ParleG_11, Peep_11, Peppino_11, Pherbot_11, Pherferi_11, Phiderman_11, Phireproof_11, PhredFlintston_11, Phriends_11, Pikmin_10, Pocket_11, PrincePhergus_11, PuppyEggo_11, QuadZero_12, Quartz_10, Raccoon_11, Rapheph_11, Raptor_11, Redfield_11, Renzie_11, Riyhil_11, Robinson_11, Rog141_11, SJay_11, Sansa_9, Saratos_10, Schimmels22_12, Schnapsidee_11, Schubert_11, Sedgewig_11, ShaiHulud_11, Shamu_10, Shee_11, Sinatra_11, SirVictor_11, SoilGremlin_11, SonOfLevi_11, Stanktossa_11, StingRay_11, StirfryIV_11, Stormbreaker8_11, Strathdee_11, Superfresh_11, TatarkaPM_11, Teagan_11, TeddyBear_11, Tenda_11, Theresita_11, Thompsone_11, Thorongil_11, TinSulphur_11, Tinyman4_12, Velene_11, Vispistious_11, WestPM_11, WildNOut_11, WilliamStrong_10, Winzigespinne_11, YuuY_10, Zada_11, Zayuliv_12, Zenitsu_10, Zepp_13,

Genes that have the "Most Annotated" start but do not call it:

-

Genes that do not have the "Most Annotated" start:

- Jemerald_12, Juicer_12,

Summary by start number:

Start 2:

- Found in 184 of 186 (98.9%) of genes in pham
- Manual Annotations of this start: 166 of 168
- Called 100.0% of time when present
- Phage (with cluster) where this start called: Acosta_12 (EA1), Agente005_12 (EA1), Alakazam_13 (EA5), AlexAdler_11 (EA1), Alyxandracam_11 (EA1), Andromedas_10 (EA2), Antoinette_11 (EA1), AranulaLuti_11 (EA1), Asta_11 (EA1), Aubergine_11 (EA1), AxiPup_11 (EA1), Baines_11 (EA1), Balsa_11 (EA1), Bandik_11 (EA1), BeautPeep30_11 (EA1), BeeBee8_12 (EA1), Benjalauen_11 (EA1), BigRedClifford_11 (EA1), Blage_11 (EA1), BonesMcCoy_11 (EA1), Bonino_11 (EA1), BouleyBill_11 (EA4), Bustleton_11 (EA4), Byron23_10 (EA1), Calix_11 (EA1), CaptainRex_12 (EA5), Carostasia_10 (EA10), Casey_10 (EA3), Chako_11 (EA1), Chamuel_11 (EA1), Cheeto1_12 (EA9), Chepli_12 (EA6), ChickenKing_11 (EA9), ChikPic_10 (EA2), Christoph_11 (EA1), Clancy_11 (EA1), Clock_12 (EA5), ColaCorta_10 (EA2), Convict_11 (EA1), Dave_11 (EA1), Delphidian_11 (EA1), Den3_11 (EA1), Dothraki_11 (EA1), Duocatuli_11 (EA1), Eleri_10 (EA2), Endor_12 (EA1), Erla_11 (EA1), Espinosa_11 (EA1), Etna_11 (EA1), Etta_11 (EA1), FarmerDoug_11 (EA1), Figueroism_11 (EA1), Finny_10 (EA2), Fulton_12 (EA5), GaeCeo_12 (EA9), GardenB_11 (EA1), Garey24_11 (EA1), Gargoyles_11 (EA1), Gelo_11 (EA1), Gershwin_11 (EA1), Glamour_9 (EA2), Golden_11 (EA4), Greenlvy_12 (EA5), Greys_11 (EA1), Gubbabump_11 (EA1), Guetzie_11 (EA4), Hamlet_11 (EA1), HanSolo_11 (EA1), HankSprout_12 (EA1), Hasitha_12 (EA5),

HerculesXL_12 (EA11), HungryHenry_11 (EA1), Ilzat_11 (EA1), Inventa_11 (EA1), loannes_11 (EA1), Ixel_11 (EA11), Janus167_11 (EA1), JasonD_14 (EA1), JasperRussell_11 (EA1), Jenos_13 (EA1), Jerbirus_11 (EA1), JeriBeth_11 (EA1), Juanyo_10 (EA10), Kale_11 (EA1), KannH_11 (EA1), KatChan_12 (EA6), Kauala_11 (EA4), KingJulien_11 (EA1), Klimt_11 (EA1), Knox_11 (EA1), Koji_11 (EA4), Kurt1_11 (EA1), Leafus_11 (EA1), Librie_12 (EA5), LilTerminator_12 (EA5), Lovelyunicorn_11 (EA1), Lucky3_11 (EA4), Ludgate_11 (EA1), Luna18_12 (EA6), MCubed_10 (EA2), MaeLinda_11 (EA1), ManRay_11 (EA1), Mandalorian_10 (EA10), Martin_12 (EA1), McGalleon_12 (EA1), Mercedes_11 (EA), MillyPhilly_11 (EA1), MonChoix_10 (EA1), Morrigan_12 (EA6), MrWorldwide_11 (EA1), Nagem_11 (EA1), Nattles_11 (EA1), Nebulous_12 (EA5), Neferthena_12 (EA5), NickSell_11 (EA1), Nucci_10 (EA10), Oats_11 (EA1), OldNelly_11 (EA1), Oxtober96_11 (EA1), Pajaza_10 (EA3), Papafritta_11 (EA1), ParleG_11 (EA1), Peep_11 (EA1), Peppino_11 (EA1), Pherbot_11 (EA4), Pherferi_11 (EA1), Phiderman_11 (EA1), Phireproof_11 (EA1), PhredFlintston_11 (EA1), Phriends_11 (EA1), Pikmin_10 (EA3), Pocket_11 (EA1), PrincePhergus_11 (EA4), PuppyEggo_11 (EA1), QuadZero_12 (EA5), Quartz_10 (EA10), Raccoon_11 (EA1), Rapheph_11 (EA1), Raptor_11 (EA1), Redfield_11 (EA1), Renzie_11 (EA1), Rihhil_11 (EA1), Robinson_11 (EA1), Rog141_11 (EA1), SJay_11 (EA1), Sansa_9 (EA2), Saratos_10 (EA2), Schimmels22_12 (EA11), Schnapsidee_11 (EA1), Schubert_11 (EA8), Sedgewig_11 (EA1), ShaiHulud_11 (EA1), Shamu_10 (EA2), Shee_11 (EA1), Sinatra_11 (EA4), SirVictor_11 (EA4), SoilGremlin_11 (EA1), SonOfLevi_11 (EA1), Stanktossa_11 (EA1), StingRay_11 (EA1), StirfryIV_11 (EA1), Stormbreaker8_11 (EA1), Strathdee_11 (EA1), Superfresh_11 (EA1), TatarkaPM_11 (EA1), Teagan_11 (EA1), TeddyBear_11 (EA1), Tenda_11 (EA1), Theresita_11 (EA7), Thompsone_11 (EA1), Thorongil_11 (EA1), TinSulphur_11 (EA1), Tinyman4_12 (EA11), Velene_11 (EA1), Vispistious_11 (EA1), WestPM_11 (EA11), WildNOut_11 (EA1), WilliamStrong_10 (EA6), Winzigespinne_11 (EA1), YuuY_10 (EA10), Zada_11 (EA1), Zayuliv_12 (EA5), Zenitsu_10 (EA2), Zepp_13 (EA5),

Start 3:

- Found in 2 of 186 (1.1%) of genes in pham
- Manual Annotations of this start: 2 of 168
- Called 100.0% of time when present
- Phage (with cluster) where this start called: Jemerald_12 (EA6), Juicer_12 (EA6),

Summary by clusters:

There are 12 clusters represented in this pham: EA11, EA10, EA, EA9, EA8, EA1, EA3, EA2, EA5, EA4, EA7, EA6,

Info for manual annotations of cluster EA:

- Start number 2 was manually annotated 1 time for cluster EA.

Info for manual annotations of cluster EA1:

- Start number 2 was manually annotated 111 times for cluster EA1.

Info for manual annotations of cluster EA10:

- Start number 2 was manually annotated 5 times for cluster EA10.

Info for manual annotations of cluster EA11:

- Start number 2 was manually annotated 5 times for cluster EA11.

Info for manual annotations of cluster EA2:

- Start number 2 was manually annotated 11 times for cluster EA2.

Info for manual annotations of cluster EA3:

- Start number 2 was manually annotated 3 times for cluster EA3.

Info for manual annotations of cluster EA4:

- Start number 2 was manually annotated 10 times for cluster EA4.

Info for manual annotations of cluster EA5:

- Start number 2 was manually annotated 10 times for cluster EA5.

Info for manual annotations of cluster EA6:

- Start number 2 was manually annotated 5 times for cluster EA6.
- Start number 3 was manually annotated 2 times for cluster EA6.

Info for manual annotations of cluster EA7:

- Start number 2 was manually annotated 1 time for cluster EA7.

Info for manual annotations of cluster EA8:

- Start number 2 was manually annotated 1 time for cluster EA8.

Info for manual annotations of cluster EA9:

- Start number 2 was manually annotated 3 times for cluster EA9.

Gene Information:

Gene: Acosta_12 Start: 7176, Stop: 7517, Start Num: 2

Candidate Starts for Acosta_12:

(Start: 2 @7176 has 166 MA's), (6, 7188), (16, 7311), (17, 7326), (22, 7386), (23, 7398), (24, 7404), (27, 7425), (32, 7485),

Gene: Agente005_12 Start: 7463, Stop: 7804, Start Num: 2

Candidate Starts for Agente005_12:

(Start: 2 @7463 has 166 MA's), (6, 7475), (17, 7613), (24, 7691), (25, 7697), (27, 7712), (31, 7763), (32, 7772),

Gene: Alakazam_13 Start: 8135, Stop: 8482, Start Num: 2

Candidate Starts for Alakazam_13:

(Start: 2 @8135 has 166 MA's), (14, 8246), (15, 8267), (16, 8276), (17, 8291), (24, 8369), (25, 8375), (27, 8390),

Gene: AlexAdler_11 Start: 6894, Stop: 7235, Start Num: 2

Candidate Starts for AlexAdler_11:

(Start: 2 @6894 has 166 MA's), (6, 6906), (14, 6999), (16, 7029), (17, 7044), (23, 7116), (24, 7122), (27, 7143), (32, 7203),

Gene: Alyxandracam_11 Start: 6903, Stop: 7244, Start Num: 2

Candidate Starts for Alyxandracam_11:

(Start: 2 @6903 has 166 MA's), (6, 6915), (14, 7008), (16, 7038), (17, 7053), (23, 7125), (24, 7131), (27, 7152), (32, 7212),

Gene: Andromedas_10 Start: 6933, Stop: 7280, Start Num: 2

Candidate Starts for Andromedas_10:

(1, 6795), (Start: 2 @6933 has 166 MA's), (6, 6945), (9, 6987), (12, 7029), (15, 7065), (17, 7089), (22, 7149), (24, 7167), (27, 7188), (28, 7209), (31, 7239),

Gene: Antoinette_11 Start: 6894, Stop: 7235, Start Num: 2

Candidate Starts for Antoinette_11:

(Start: 2 @6894 has 166 MA's), (6, 6906), (14, 6999), (16, 7029), (17, 7044), (23, 7116), (24, 7122), (27, 7143), (32, 7203),

Gene: AranulaLuti_11 Start: 7196, Stop: 7537, Start Num: 2

Candidate Starts for AranulaLuti_11:

(Start: 2 @7196 has 166 MA's), (6, 7208), (14, 7301), (16, 7331), (17, 7346), (23, 7418), (24, 7424), (27, 7445), (29, 7481), (32, 7505),

Gene: Asta_11 Start: 7209, Stop: 7550, Start Num: 2

Candidate Starts for Asta_11:

(Start: 2 @7209 has 166 MA's), (6, 7221), (14, 7314), (16, 7344), (17, 7359), (23, 7431), (24, 7437), (27, 7458), (29, 7494), (32, 7518),

Gene: Aubergine_11 Start: 7209, Stop: 7550, Start Num: 2

Candidate Starts for Aubergine_11:

(Start: 2 @7209 has 166 MA's), (6, 7221), (14, 7314), (16, 7344), (17, 7359), (23, 7431), (24, 7437), (27, 7458), (29, 7494), (32, 7518),

Gene: AxiPup_11 Start: 6903, Stop: 7244, Start Num: 2

Candidate Starts for AxiPup_11:

(Start: 2 @6903 has 166 MA's), (6, 6915), (14, 7008), (16, 7038), (17, 7053), (23, 7125), (24, 7131), (27, 7152), (32, 7212),

Gene: Baines_11 Start: 7193, Stop: 7534, Start Num: 2

Candidate Starts for Baines_11:

(Start: 2 @7193 has 166 MA's), (6, 7205), (14, 7298), (16, 7328), (17, 7343), (23, 7415), (24, 7421), (27, 7442), (32, 7502),

Gene: Balsa_11 Start: 7311, Stop: 7652, Start Num: 2

Candidate Starts for Balsa_11:

(Start: 2 @7311 has 166 MA's), (6, 7323), (17, 7461), (24, 7539), (27, 7560), (32, 7620),

Gene: Bandik_11 Start: 6900, Stop: 7241, Start Num: 2

Candidate Starts for Bandik_11:

(Start: 2 @6900 has 166 MA's), (6, 6912), (14, 7005), (16, 7035), (17, 7050), (23, 7122), (24, 7128), (27, 7149), (29, 7185), (32, 7209),

Gene: BeautPeep30_11 Start: 6906, Stop: 7247, Start Num: 2

Candidate Starts for BeautPeep30_11:

(Start: 2 @6906 has 166 MA's), (6, 6918), (14, 7011), (16, 7041), (17, 7056), (23, 7128), (24, 7134), (27, 7155), (29, 7191), (32, 7215),

Gene: BeeBee8_12 Start: 7474, Stop: 7815, Start Num: 2

Candidate Starts for BeeBee8_12:

(Start: 2 @7474 has 166 MA's), (6, 7486), (17, 7624), (24, 7702), (27, 7723), (32, 7783),

Gene: Benjalauren_11 Start: 7196, Stop: 7537, Start Num: 2

Candidate Starts for Benjalauren_11:

(Start: 2 @7196 has 166 MA's), (6, 7208), (14, 7301), (16, 7331), (17, 7346), (23, 7418), (24, 7424), (27, 7445), (29, 7481), (32, 7505),

Gene: BigRedClifford_11 Start: 6903, Stop: 7244, Start Num: 2

Candidate Starts for BigRedClifford_11:

(Start: 2 @6903 has 166 MA's), (6, 6915), (14, 7008), (16, 7038), (17, 7053), (23, 7125), (24, 7131), (27, 7152), (32, 7212),

Gene: Blage_11 Start: 6903, Stop: 7244, Start Num: 2

Candidate Starts for Blage_11:

(Start: 2 @6903 has 166 MA's), (6, 6915), (14, 7008), (16, 7038), (17, 7053), (23, 7125), (24, 7131), (27, 7152), (32, 7212),

Gene: BonesMcCoy_11 Start: 6903, Stop: 7244, Start Num: 2

Candidate Starts for BonesMcCoy_11:

(Start: 2 @6903 has 166 MA's), (6, 6915), (14, 7008), (16, 7038), (17, 7053), (23, 7125), (24, 7131), (27, 7152), (32, 7212),

Gene: Bonino_11 Start: 7186, Stop: 7527, Start Num: 2

Candidate Starts for Bonino_11:

(Start: 2 @7186 has 166 MA's), (6, 7198), (14, 7291), (16, 7321), (17, 7336), (23, 7408), (24, 7414), (27, 7435), (29, 7471), (32, 7495),

Gene: BouleyBill_11 Start: 7168, Stop: 7509, Start Num: 2

Candidate Starts for BouleyBill_11:

(Start: 2 @7168 has 166 MA's), (6, 7180), (15, 7294), (16, 7303), (17, 7318), (22, 7378), (24, 7396), (27, 7417),

Gene: Bustleton_11 Start: 7156, Stop: 7497, Start Num: 2

Candidate Starts for Bustleton_11:

(Start: 2 @7156 has 166 MA's), (6, 7168), (15, 7282), (16, 7291), (17, 7306), (22, 7366), (24, 7384), (27, 7405),

Gene: Byron23_10 Start: 6909, Stop: 7250, Start Num: 2

Candidate Starts for Byron23_10:

(Start: 2 @6909 has 166 MA's), (6, 6921), (14, 7014), (16, 7044), (17, 7059), (23, 7131), (24, 7137), (27, 7158), (29, 7194), (32, 7218),

Gene: Calix_11 Start: 7186, Stop: 7527, Start Num: 2

Candidate Starts for Calix_11:

(Start: 2 @7186 has 166 MA's), (6, 7198), (14, 7291), (16, 7321), (17, 7336), (23, 7408), (24, 7414), (27, 7435), (32, 7495),

Gene: CaptainRex_12 Start: 7344, Stop: 7688, Start Num: 2

Candidate Starts for CaptainRex_12:

(Start: 2 @7344 has 166 MA's), (9, 7398), (10, 7422), (12, 7440), (14, 7455), (17, 7500), (24, 7578), (25, 7584), (27, 7599),

Gene: Carostasia_10 Start: 7109, Stop: 7456, Start Num: 2

Candidate Starts for Carostasia_10:

(1, 6974), (Start: 2 @7109 has 166 MA's), (6, 7121), (15, 7241), (16, 7250), (17, 7265), (22, 7325), (24, 7343), (27, 7364), (32, 7424),

Gene: Casey_10 Start: 7200, Stop: 7547, Start Num: 2

Candidate Starts for Casey_10:

(1, 7065), (Start: 2 @7200 has 166 MA's), (6, 7212), (12, 7296), (15, 7332), (17, 7356), (27, 7455), (34, 7536),

Gene: Chako_11 Start: 7196, Stop: 7537, Start Num: 2

Candidate Starts for Chako_11:

(Start: 2 @7196 has 166 MA's), (6, 7208), (14, 7301), (16, 7331), (17, 7346), (23, 7418), (24, 7424), (27, 7445), (29, 7481), (32, 7505),

Gene: Chamuel_11 Start: 7188, Stop: 7529, Start Num: 2

Candidate Starts for Chamuel_11:

(Start: 2 @7188 has 166 MA's), (6, 7200), (14, 7293), (16, 7323), (17, 7338), (23, 7410), (24, 7416), (27, 7437), (32, 7497),

Gene: Cheeto1_12 Start: 7074, Stop: 7415, Start Num: 2

Candidate Starts for Cheeto1_12:

(Start: 2 @7074 has 166 MA's), (6, 7086), (17, 7224), (20, 7251), (22, 7284), (27, 7323), (31, 7374), (32, 7383),

Gene: Chepli_12 Start: 7337, Stop: 7681, Start Num: 2

Candidate Starts for Chepli_12:

(Start: 2 @7337 has 166 MA's), (5, 7346), (6, 7352), (15, 7472), (16, 7481), (17, 7496), (24, 7571), (27, 7592), (30, 7631),

Gene: ChickenKing_11 Start: 6894, Stop: 7235, Start Num: 2

Candidate Starts for ChickenKing_11:

(Start: 2 @6894 has 166 MA's), (6, 6906), (15, 7020), (17, 7044), (22, 7104), (27, 7143), (31, 7194), (32, 7203),

Gene: ChikPic_10 Start: 6949, Stop: 7296, Start Num: 2

Candidate Starts for ChikPic_10:

(1, 6811), (Start: 2 @6949 has 166 MA's), (6, 6961), (9, 7003), (12, 7045), (15, 7081), (17, 7105), (24, 7183), (27, 7204), (28, 7225), (31, 7255),

Gene: Christoph_11 Start: 7207, Stop: 7548, Start Num: 2

Candidate Starts for Christoph_11:

(Start: 2 @7207 has 166 MA's), (6, 7219), (14, 7312), (16, 7342), (17, 7357), (23, 7429), (24, 7435), (27, 7456), (29, 7492), (32, 7516),

Gene: Clancy_11 Start: 7196, Stop: 7537, Start Num: 2

Candidate Starts for Clancy_11:

(Start: 2 @7196 has 166 MA's), (6, 7208), (14, 7301), (16, 7331), (17, 7346), (23, 7418), (24, 7424), (27, 7445), (29, 7481), (32, 7505),

Gene: Clock_12 Start: 8068, Stop: 8412, Start Num: 2

Candidate Starts for Clock_12:

(Start: 2 @8068 has 166 MA's), (14, 8179), (15, 8200), (16, 8209), (17, 8224), (19, 8242), (22, 8281), (24, 8299), (27, 8320),

Gene: ColaCorta_10 Start: 6933, Stop: 7280, Start Num: 2

Candidate Starts for ColaCorta_10:

(1, 6795), (Start: 2 @6933 has 166 MA's), (6, 6945), (9, 6987), (12, 7029), (15, 7065), (17, 7089), (22, 7149), (24, 7167), (27, 7188), (28, 7209), (31, 7239),

Gene: Convict_11 Start: 6903, Stop: 7244, Start Num: 2

Candidate Starts for Convict_11:

(Start: 2 @6903 has 166 MA's), (6, 6915), (14, 7008), (16, 7038), (17, 7053), (23, 7125), (24, 7131), (27, 7152), (32, 7212),

Gene: Dave_11 Start: 6894, Stop: 7235, Start Num: 2

Candidate Starts for Dave_11:

(Start: 2 @6894 has 166 MA's), (6, 6906), (14, 6999), (16, 7029), (17, 7044), (23, 7116), (24, 7122), (27, 7143), (32, 7203),

Gene: Delphidian_11 Start: 6903, Stop: 7244, Start Num: 2

Candidate Starts for Delphidian_11:

(Start: 2 @6903 has 166 MA's), (6, 6915), (14, 7008), (16, 7038), (17, 7053), (23, 7125), (24, 7131), (27, 7152), (29, 7188), (32, 7212),

Gene: Den3_11 Start: 6907, Stop: 7248, Start Num: 2

Candidate Starts for Den3_11:

(Start: 2 @6907 has 166 MA's), (6, 6919), (14, 7012), (16, 7042), (17, 7057), (23, 7129), (24, 7135), (27, 7156), (32, 7216),

Gene: Dothraki_11 Start: 6906, Stop: 7247, Start Num: 2

Candidate Starts for Dothraki_11:

(Start: 2 @6906 has 166 MA's), (6, 6918), (14, 7011), (16, 7041), (17, 7056), (23, 7128), (24, 7134), (27, 7155), (29, 7191), (32, 7215),

Gene: Duocatuli_11 Start: 7196, Stop: 7537, Start Num: 2

Candidate Starts for Duocatuli_11:

(Start: 2 @7196 has 166 MA's), (6, 7208), (14, 7301), (16, 7331), (17, 7346), (23, 7418), (24, 7424), (27, 7445), (29, 7481), (32, 7505),

Gene: Eleri_10 Start: 6946, Stop: 7293, Start Num: 2

Candidate Starts for Eleri_10:

(1, 6808), (Start: 2 @6946 has 166 MA's), (6, 6958), (9, 7000), (12, 7042), (15, 7078), (17, 7102), (24, 7180), (27, 7201), (28, 7222), (31, 7252),

Gene: Endor_12 Start: 7472, Stop: 7813, Start Num: 2

Candidate Starts for Endor_12:

(Start: 2 @7472 has 166 MA's), (6, 7484), (17, 7622), (22, 7682), (24, 7700), (27, 7721), (32, 7781),

Gene: Erla_11 Start: 7186, Stop: 7527, Start Num: 2

Candidate Starts for Erla_11:

(Start: 2 @7186 has 166 MA's), (6, 7198), (14, 7291), (16, 7321), (17, 7336), (23, 7408), (24, 7414), (27, 7435), (32, 7495),

Gene: Espinosa_11 Start: 7207, Stop: 7548, Start Num: 2

Candidate Starts for Espinosa_11:

(Start: 2 @7207 has 166 MA's), (6, 7219), (14, 7312), (16, 7342), (17, 7357), (23, 7429), (24, 7435), (27, 7456), (29, 7492), (32, 7516),

Gene: Etna_11 Start: 7302, Stop: 7643, Start Num: 2

Candidate Starts for Etna_11:

(Start: 2 @7302 has 166 MA's), (6, 7314), (17, 7452), (24, 7530), (27, 7551), (32, 7611),

Gene: Etta_11 Start: 7190, Stop: 7531, Start Num: 2

Candidate Starts for Etta_11:

(Start: 2 @7190 has 166 MA's), (6, 7202), (14, 7295), (16, 7325), (17, 7340), (23, 7412), (24, 7418), (27, 7439), (32, 7499),

Gene: FarmerDoug_11 Start: 7031, Stop: 7372, Start Num: 2

Candidate Starts for FarmerDoug_11:

(Start: 2 @7031 has 166 MA's), (6, 7043), (16, 7166), (17, 7181), (24, 7259), (27, 7280), (32, 7340),

Gene: Figueroism_11 Start: 6894, Stop: 7235, Start Num: 2

Candidate Starts for Figueroism_11:

(Start: 2 @6894 has 166 MA's), (6, 6906), (14, 6999), (16, 7029), (17, 7044), (18, 7047), (23, 7116), (24, 7122), (27, 7143), (32, 7203),

Gene: Finny_10 Start: 6933, Stop: 7280, Start Num: 2

Candidate Starts for Finny_10:

(1, 6795), (Start: 2 @6933 has 166 MA's), (6, 6945), (9, 6987), (12, 7029), (15, 7065), (17, 7089), (24, 7167), (27, 7188), (28, 7209), (31, 7239),

Gene: Fulton_12 Start: 7326, Stop: 7670, Start Num: 2

Candidate Starts for Fulton_12:

(Start: 2 @7326 has 166 MA's), (9, 7380), (10, 7404), (12, 7422), (14, 7437), (17, 7482), (24, 7560), (25, 7566), (27, 7581),

Gene: GaeCeo_12 Start: 7064, Stop: 7405, Start Num: 2

Candidate Starts for GaeCeo_12:

(Start: 2 @7064 has 166 MA's), (6, 7076), (17, 7214), (22, 7274), (27, 7313), (31, 7364), (32, 7373),

Gene: GardenB_11 Start: 7305, Stop: 7646, Start Num: 2

Candidate Starts for GardenB_11:

(Start: 2 @7305 has 166 MA's), (6, 7317), (17, 7455), (24, 7533), (27, 7554), (32, 7614),

Gene: Garey24_11 Start: 7192, Stop: 7533, Start Num: 2

Candidate Starts for Garey24_11:

(Start: 2 @7192 has 166 MA's), (6, 7204), (14, 7297), (16, 7327), (17, 7342), (23, 7414), (24, 7420), (27, 7441), (29, 7477), (31, 7492), (32, 7501),

Gene: Gargoyle_11 Start: 6906, Stop: 7247, Start Num: 2

Candidate Starts for Gargoyle_11:

(Start: 2 @6906 has 166 MA's), (6, 6918), (14, 7011), (16, 7041), (17, 7056), (23, 7128), (24, 7134), (27, 7155), (29, 7191), (32, 7215),

Gene: Gelo_11 Start: 7190, Stop: 7531, Start Num: 2

Candidate Starts for Gelo_11:

(Start: 2 @7190 has 166 MA's), (6, 7202), (14, 7295), (16, 7325), (17, 7340), (23, 7412), (24, 7418), (27, 7439), (32, 7499),

Gene: Gershwin_11 Start: 7209, Stop: 7550, Start Num: 2

Candidate Starts for Gershwin_11:

(Start: 2 @7209 has 166 MA's), (6, 7221), (14, 7314), (16, 7344), (17, 7359), (23, 7431), (24, 7437), (27, 7458), (29, 7494), (32, 7518),

Gene: Glamour_9 Start: 6934, Stop: 7281, Start Num: 2

Candidate Starts for Glamour_9:

(1, 6796), (Start: 2 @6934 has 166 MA's), (6, 6946), (9, 6988), (12, 7030), (15, 7066), (17, 7090), (24, 7168), (27, 7189), (28, 7210), (31, 7240),

Gene: Golden_11 Start: 7248, Stop: 7589, Start Num: 2

Candidate Starts for Golden_11:

(Start: 2 @7248 has 166 MA's), (6, 7260), (14, 7353), (15, 7374), (16, 7383), (17, 7398), (24, 7476), (27, 7497),

Gene: Greenlvy_12 Start: 7343, Stop: 7687, Start Num: 2

Candidate Starts for Greenlvy_12:

(Start: 2 @7343 has 166 MA's), (9, 7397), (10, 7421), (12, 7439), (14, 7454), (17, 7499), (24, 7577), (25, 7583), (27, 7598),

Gene: Greys_11 Start: 6903, Stop: 7244, Start Num: 2

Candidate Starts for Greys_11:

(Start: 2 @6903 has 166 MA's), (6, 6915), (14, 7008), (16, 7038), (17, 7053), (23, 7125), (24, 7131), (27, 7152), (32, 7212),

Gene: Gubbabump_11 Start: 7198, Stop: 7539, Start Num: 2

Candidate Starts for Gubbabump_11:

(Start: 2 @7198 has 166 MA's), (6, 7210), (14, 7303), (16, 7333), (17, 7348), (23, 7420), (24, 7426), (27, 7447), (29, 7483), (32, 7507),

Gene: Guetzie_11 Start: 7242, Stop: 7583, Start Num: 2

Candidate Starts for Guetzie_11:

(Start: 2 @7242 has 166 MA's), (6, 7254), (14, 7347), (15, 7368), (16, 7377), (17, 7392), (24, 7470), (27, 7491),

Gene: Hamlet_11 Start: 7311, Stop: 7652, Start Num: 2

Candidate Starts for Hamlet_11:

(Start: 2 @7311 has 166 MA's), (6, 7323), (17, 7461), (24, 7539), (27, 7560), (32, 7620),

Gene: HanSolo_11 Start: 7196, Stop: 7537, Start Num: 2

Candidate Starts for HanSolo_11:

(Start: 2 @7196 has 166 MA's), (6, 7208), (14, 7301), (16, 7331), (17, 7346), (23, 7418), (24, 7424), (27, 7445), (29, 7481), (32, 7505),

Gene: HankSprout_12 Start: 7076, Stop: 7417, Start Num: 2

Candidate Starts for HankSprout_12:

(Start: 2 @7076 has 166 MA's), (6, 7088), (14, 7181), (16, 7211), (17, 7226), (23, 7298), (24, 7304), (27, 7325), (29, 7361), (32, 7385),

Gene: Hasitha_12 Start: 7344, Stop: 7688, Start Num: 2

Candidate Starts for Hasitha_12:

(Start: 2 @7344 has 166 MA's), (9, 7398), (10, 7422), (12, 7440), (14, 7455), (17, 7500), (24, 7578), (25, 7584), (27, 7599),

Gene: HerculesXL_12 Start: 7445, Stop: 7789, Start Num: 2
Candidate Starts for HerculesXL_12:
(Start: 2 @7445 has 166 MA's), (9, 7499), (15, 7577), (17, 7601), (24, 7679), (27, 7700),

Gene: HungryHenry_11 Start: 7197, Stop: 7538, Start Num: 2
Candidate Starts for HungryHenry_11:
(Start: 2 @7197 has 166 MA's), (6, 7209), (14, 7302), (16, 7332), (17, 7347), (23, 7419), (24, 7425),
(27, 7446), (29, 7482), (32, 7506),

Gene: Ilzat_11 Start: 7196, Stop: 7537, Start Num: 2
Candidate Starts for Ilzat_11:
(Start: 2 @7196 has 166 MA's), (6, 7208), (14, 7301), (16, 7331), (17, 7346), (23, 7418), (24, 7424),
(27, 7445), (29, 7481), (32, 7505),

Gene: Inventa_11 Start: 6906, Stop: 7247, Start Num: 2
Candidate Starts for Inventa_11:
(Start: 2 @6906 has 166 MA's), (6, 6918), (14, 7011), (16, 7041), (17, 7056), (23, 7128), (24, 7134),
(27, 7155), (29, 7191), (32, 7215),

Gene: loannes_11 Start: 6903, Stop: 7244, Start Num: 2
Candidate Starts for loannes_11:
(Start: 2 @6903 has 166 MA's), (6, 6915), (14, 7008), (16, 7038), (17, 7053), (23, 7125), (24, 7131),
(27, 7152), (32, 7212),

Gene: Ixel_11 Start: 6998, Stop: 7345, Start Num: 2
Candidate Starts for Ixel_11:
(Start: 2 @6998 has 166 MA's), (7, 7034), (15, 7130), (17, 7154), (21, 7196), (24, 7232), (26, 7250),
(27, 7253),

Gene: Janus167_11 Start: 7196, Stop: 7537, Start Num: 2
Candidate Starts for Janus167_11:
(Start: 2 @7196 has 166 MA's), (6, 7208), (14, 7301), (16, 7331), (17, 7346), (23, 7418), (24, 7424),
(27, 7445), (29, 7481), (32, 7505),

Gene: JasonD_14 Start: 7337, Stop: 7678, Start Num: 2
Candidate Starts for JasonD_14:
(Start: 2 @7337 has 166 MA's), (6, 7349), (13, 7433), (17, 7487), (22, 7547), (23, 7559), (24, 7565),
(27, 7586), (32, 7646),

Gene: JasperRussell_11 Start: 7196, Stop: 7537, Start Num: 2
Candidate Starts for JasperRussell_11:
(Start: 2 @7196 has 166 MA's), (6, 7208), (14, 7301), (16, 7331), (17, 7346), (23, 7418), (24, 7424),
(27, 7445), (29, 7481), (32, 7505),

Gene: Jemerald_12 Start: 8307, Stop: 8651, Start Num: 3
Candidate Starts for Jemerald_12:
(Start: 3 @8307 has 2 MA's), (5, 8316), (6, 8322), (11, 8397), (13, 8412), (15, 8442), (17, 8466), (24,
8541), (25, 8547), (27, 8562), (33, 8625),

Gene: Jenos_13 Start: 7658, Stop: 7999, Start Num: 2
Candidate Starts for Jenos_13:
(Start: 2 @7658 has 166 MA's), (6, 7670), (17, 7808), (22, 7868), (23, 7880), (24, 7886), (27, 7907),
(32, 7967),

Gene: Jerbirus_11 Start: 7196, Stop: 7537, Start Num: 2

Candidate Starts for Jerbirus_11:

(Start: 2 @7196 has 166 MA's), (6, 7208), (14, 7301), (16, 7331), (17, 7346), (23, 7418), (24, 7424), (27, 7445), (29, 7481), (32, 7505),

Gene: JeriBeth_11 Start: 7043, Stop: 7384, Start Num: 2

Candidate Starts for JeriBeth_11:

(Start: 2 @7043 has 166 MA's), (6, 7055), (14, 7148), (16, 7178), (17, 7193), (23, 7265), (24, 7271), (27, 7292), (29, 7328), (32, 7352),

Gene: Juanyo_10 Start: 7071, Stop: 7418, Start Num: 2

Candidate Starts for Juanyo_10:

(Start: 2 @7071 has 166 MA's), (6, 7083), (14, 7182), (15, 7203), (16, 7212), (17, 7227), (22, 7287), (24, 7305), (25, 7311), (27, 7326), (32, 7386),

Gene: Juicer_12 Start: 8307, Stop: 8651, Start Num: 3

Candidate Starts for Juicer_12:

(Start: 3 @8307 has 2 MA's), (5, 8316), (6, 8322), (11, 8397), (13, 8412), (15, 8442), (17, 8466), (24, 8541), (25, 8547), (27, 8562), (33, 8625),

Gene: Kale_11 Start: 7211, Stop: 7552, Start Num: 2

Candidate Starts for Kale_11:

(Start: 2 @7211 has 166 MA's), (6, 7223), (14, 7316), (16, 7346), (17, 7361), (23, 7433), (24, 7439), (27, 7460), (29, 7496), (32, 7520),

Gene: KannH_11 Start: 7196, Stop: 7537, Start Num: 2

Candidate Starts for KannH_11:

(Start: 2 @7196 has 166 MA's), (6, 7208), (14, 7301), (16, 7331), (17, 7346), (23, 7418), (24, 7424), (27, 7445), (29, 7481), (32, 7505),

Gene: KatChan_12 Start: 7343, Stop: 7687, Start Num: 2

Candidate Starts for KatChan_12:

(Start: 2 @7343 has 166 MA's), (5, 7352), (6, 7358), (15, 7478), (16, 7487), (17, 7502), (24, 7577), (27, 7598), (30, 7637),

Gene: Kauala_11 Start: 7164, Stop: 7505, Start Num: 2

Candidate Starts for Kauala_11:

(Start: 2 @7164 has 166 MA's), (6, 7176), (11, 7245), (14, 7269), (15, 7290), (16, 7299), (17, 7314), (22, 7374), (24, 7392), (27, 7413), (28, 7434),

Gene: KingJulien_11 Start: 7302, Stop: 7643, Start Num: 2

Candidate Starts for KingJulien_11:

(Start: 2 @7302 has 166 MA's), (6, 7314), (17, 7452), (24, 7530), (27, 7551), (32, 7611),

Gene: Klimt_11 Start: 7188, Stop: 7529, Start Num: 2

Candidate Starts for Klimt_11:

(Start: 2 @7188 has 166 MA's), (6, 7200), (14, 7293), (16, 7323), (17, 7338), (23, 7410), (24, 7416), (27, 7437), (32, 7497),

Gene: Knox_11 Start: 6903, Stop: 7244, Start Num: 2

Candidate Starts for Knox_11:

(Start: 2 @6903 has 166 MA's), (6, 6915), (14, 7008), (16, 7038), (17, 7053), (23, 7125), (24, 7131), (27, 7152), (32, 7212),

Gene: Koji_11 Start: 7289, Stop: 7630, Start Num: 2

Candidate Starts for Koji_11:

(Start: 2 @7289 has 166 MA's), (6, 7301), (15, 7415), (16, 7424), (17, 7439), (22, 7499), (24, 7517), (27, 7538),

Gene: Kurt1_11 Start: 6906, Stop: 7247, Start Num: 2

Candidate Starts for Kurt1_11:

(Start: 2 @6906 has 166 MA's), (6, 6918), (14, 7011), (16, 7041), (17, 7056), (23, 7128), (24, 7134), (27, 7155), (29, 7191), (32, 7215),

Gene: Leafus_11 Start: 7449, Stop: 7790, Start Num: 2

Candidate Starts for Leafus_11:

(Start: 2 @7449 has 166 MA's), (6, 7461), (17, 7599), (24, 7677), (27, 7698), (32, 7758),

Gene: Librie_12 Start: 7344, Stop: 7688, Start Num: 2

Candidate Starts for Librie_12:

(Start: 2 @7344 has 166 MA's), (9, 7398), (10, 7422), (12, 7440), (14, 7455), (17, 7500), (24, 7578), (25, 7584), (27, 7599),

Gene: LilTerminator_12 Start: 7350, Stop: 7694, Start Num: 2

Candidate Starts for LilTerminator_12:

(Start: 2 @7350 has 166 MA's), (9, 7404), (10, 7428), (12, 7446), (14, 7461), (17, 7506), (24, 7584), (25, 7590), (27, 7605),

Gene: Lovelyunicorn_11 Start: 6903, Stop: 7244, Start Num: 2

Candidate Starts for Lovelyunicorn_11:

(Start: 2 @6903 has 166 MA's), (6, 6915), (14, 7008), (16, 7038), (17, 7053), (23, 7125), (24, 7131), (27, 7152), (32, 7212),

Gene: Lucky3_11 Start: 7248, Stop: 7589, Start Num: 2

Candidate Starts for Lucky3_11:

(Start: 2 @7248 has 166 MA's), (6, 7260), (14, 7353), (15, 7374), (16, 7383), (17, 7398), (24, 7476), (27, 7497),

Gene: Ludgate_11 Start: 6900, Stop: 7241, Start Num: 2

Candidate Starts for Ludgate_11:

(Start: 2 @6900 has 166 MA's), (6, 6912), (14, 7005), (16, 7035), (17, 7050), (23, 7122), (24, 7128), (27, 7149), (29, 7185), (32, 7209),

Gene: Luna18_12 Start: 7343, Stop: 7687, Start Num: 2

Candidate Starts for Luna18_12:

(Start: 2 @7343 has 166 MA's), (5, 7352), (6, 7358), (15, 7478), (16, 7487), (17, 7502), (24, 7577), (27, 7598), (30, 7637),

Gene: MCubed_10 Start: 6958, Stop: 7305, Start Num: 2

Candidate Starts for MCubed_10:

(1, 6820), (Start: 2 @6958 has 166 MA's), (6, 6970), (9, 7012), (12, 7054), (15, 7090), (17, 7114), (24, 7192), (27, 7213), (28, 7234), (31, 7264),

Gene: MaeLinda_11 Start: 6906, Stop: 7247, Start Num: 2

Candidate Starts for MaeLinda_11:

(Start: 2 @6906 has 166 MA's), (6, 6918), (14, 7011), (16, 7041), (17, 7056), (23, 7128), (24, 7134), (27, 7155), (32, 7215),

Gene: ManRay_11 Start: 7209, Stop: 7550, Start Num: 2

Candidate Starts for ManRay_11:

(Start: 2 @7209 has 166 MA's), (6, 7221), (14, 7314), (16, 7344), (17, 7359), (23, 7431), (24, 7437), (27, 7458), (29, 7494), (32, 7518),

Gene: Mandalorian_10 Start: 7108, Stop: 7455, Start Num: 2

Candidate Starts for Mandalorian_10:

(Start: 2 @7108 has 166 MA's), (6, 7120), (15, 7240), (16, 7249), (17, 7264), (22, 7324), (24, 7342), (27, 7363), (32, 7423),

Gene: Martin_12 Start: 6906, Stop: 7247, Start Num: 2

Candidate Starts for Martin_12:

(Start: 2 @6906 has 166 MA's), (6, 6918), (14, 7011), (16, 7041), (17, 7056), (23, 7128), (24, 7134), (27, 7155), (29, 7191), (32, 7215),

Gene: McGalleon_12 Start: 7777, Stop: 8118, Start Num: 2

Candidate Starts for McGalleon_12:

(Start: 2 @7777 has 166 MA's), (6, 7789), (17, 7927), (22, 7987), (23, 7999), (24, 8005), (27, 8026), (31, 8077), (32, 8086),

Gene: Mercedes_11 Start: 7099, Stop: 7443, Start Num: 2

Candidate Starts for Mercedes_11:

(Start: 2 @7099 has 166 MA's), (4, 7105), (7, 7135), (9, 7153), (10, 7177), (12, 7195), (14, 7210), (17, 7255), (24, 7333), (25, 7339), (27, 7354),

Gene: MillyPhilly_11 Start: 6903, Stop: 7244, Start Num: 2

Candidate Starts for MillyPhilly_11:

(Start: 2 @6903 has 166 MA's), (6, 6915), (14, 7008), (16, 7038), (17, 7053), (23, 7125), (24, 7131), (27, 7152), (29, 7188), (32, 7212),

Gene: MonChoix_10 Start: 6976, Stop: 7317, Start Num: 2

Candidate Starts for MonChoix_10:

(Start: 2 @6976 has 166 MA's), (6, 6988), (14, 7081), (16, 7111), (17, 7126), (24, 7204), (32, 7285),

Gene: Morrigan_12 Start: 8241, Stop: 8588, Start Num: 2

Candidate Starts for Morrigan_12:

(Start: 2 @8241 has 166 MA's), (5, 8253), (6, 8259), (8, 8286), (16, 8388), (17, 8403), (24, 8478), (27, 8499),

Gene: MrWorldwide_11 Start: 6906, Stop: 7247, Start Num: 2

Candidate Starts for MrWorldwide_11:

(Start: 2 @6906 has 166 MA's), (6, 6918), (14, 7011), (16, 7041), (17, 7056), (23, 7128), (24, 7134), (27, 7155), (29, 7191), (32, 7215),

Gene: Nagem_11 Start: 6900, Stop: 7241, Start Num: 2

Candidate Starts for Nagem_11:

(Start: 2 @6900 has 166 MA's), (6, 6912), (14, 7005), (16, 7035), (17, 7050), (23, 7122), (24, 7128), (27, 7149), (29, 7185), (32, 7209),

Gene: Nattles_11 Start: 7192, Stop: 7533, Start Num: 2

Candidate Starts for Nattles_11:

(Start: 2 @7192 has 166 MA's), (6, 7204), (14, 7297), (16, 7327), (17, 7342), (23, 7414), (24, 7420), (27, 7441), (32, 7501),

Gene: Nebulous_12 Start: 8077, Stop: 8421, Start Num: 2

Candidate Starts for Nebulous_12:

(Start: 2 @8077 has 166 MA's), (14, 8188), (15, 8209), (16, 8218), (17, 8233), (19, 8251), (22, 8290), (24, 8308), (27, 8329),

Gene: Neferthena_12 Start: 8088, Stop: 8432, Start Num: 2

Candidate Starts for Neferthena_12:

(Start: 2 @8088 has 166 MA's), (14, 8199), (16, 8229), (17, 8244), (24, 8319), (25, 8325), (27, 8340),

Gene: NickSell_11 Start: 6906, Stop: 7247, Start Num: 2

Candidate Starts for NickSell_11:

(Start: 2 @6906 has 166 MA's), (6, 6918), (14, 7011), (16, 7041), (17, 7056), (23, 7128), (24, 7134), (27, 7155), (29, 7191), (32, 7215),

Gene: Nucci_10 Start: 7096, Stop: 7443, Start Num: 2

Candidate Starts for Nucci_10:

(Start: 2 @7096 has 166 MA's), (6, 7108), (15, 7228), (16, 7237), (17, 7252), (22, 7312), (24, 7330), (27, 7351), (32, 7411),

Gene: Oats_11 Start: 7209, Stop: 7550, Start Num: 2

Candidate Starts for Oats_11:

(Start: 2 @7209 has 166 MA's), (6, 7221), (14, 7314), (16, 7344), (17, 7359), (23, 7431), (24, 7437), (27, 7458), (29, 7494), (32, 7518),

Gene: OldNelly_11 Start: 6906, Stop: 7247, Start Num: 2

Candidate Starts for OldNelly_11:

(Start: 2 @6906 has 166 MA's), (6, 6918), (14, 7011), (16, 7041), (17, 7056), (23, 7128), (24, 7134), (27, 7155), (29, 7191), (32, 7215),

Gene: Oxtober96_11 Start: 6903, Stop: 7244, Start Num: 2

Candidate Starts for Oxtober96_11:

(Start: 2 @6903 has 166 MA's), (6, 6915), (14, 7008), (16, 7038), (17, 7053), (23, 7125), (24, 7131), (27, 7152), (32, 7212),

Gene: Pajaza_10 Start: 7200, Stop: 7547, Start Num: 2

Candidate Starts for Pajaza_10:

(1, 7065), (Start: 2 @7200 has 166 MA's), (6, 7212), (12, 7296), (15, 7332), (17, 7356), (27, 7455), (34, 7536),

Gene: Papafritta_11 Start: 7196, Stop: 7537, Start Num: 2

Candidate Starts for Papafritta_11:

(Start: 2 @7196 has 166 MA's), (6, 7208), (14, 7301), (16, 7331), (17, 7346), (23, 7418), (24, 7424), (27, 7445), (29, 7481), (32, 7505),

Gene: ParleG_11 Start: 6906, Stop: 7247, Start Num: 2

Candidate Starts for ParleG_11:

(Start: 2 @6906 has 166 MA's), (6, 6918), (14, 7011), (16, 7041), (17, 7056), (23, 7128), (24, 7134), (27, 7155), (29, 7191), (32, 7215),

Gene: Peep_11 Start: 6894, Stop: 7235, Start Num: 2
Candidate Starts for Peep_11:
(Start: 2 @6894 has 166 MA's), (6, 6906), (14, 6999), (16, 7029), (17, 7044), (23, 7116), (24, 7122),
(27, 7143), (32, 7203),

Gene: Peppino_11 Start: 7302, Stop: 7643, Start Num: 2
Candidate Starts for Peppino_11:
(Start: 2 @7302 has 166 MA's), (6, 7314), (17, 7452), (24, 7530), (27, 7551), (32, 7611),

Gene: Pherbot_11 Start: 7155, Stop: 7496, Start Num: 2
Candidate Starts for Pherbot_11:
(Start: 2 @7155 has 166 MA's), (6, 7167), (15, 7281), (16, 7290), (17, 7305), (22, 7365), (24, 7383),
(27, 7404),

Gene: Pherferi_11 Start: 6906, Stop: 7247, Start Num: 2
Candidate Starts for Pherferi_11:
(Start: 2 @6906 has 166 MA's), (6, 6918), (14, 7011), (16, 7041), (17, 7056), (23, 7128), (24, 7134),
(27, 7155), (29, 7191), (32, 7215),

Gene: Phiderman_11 Start: 6903, Stop: 7244, Start Num: 2
Candidate Starts for Phiderman_11:
(Start: 2 @6903 has 166 MA's), (6, 6915), (14, 7008), (16, 7038), (17, 7053), (23, 7125), (24, 7131),
(27, 7152), (29, 7188), (32, 7212),

Gene: Phireproof_11 Start: 6906, Stop: 7247, Start Num: 2
Candidate Starts for Phireproof_11:
(Start: 2 @6906 has 166 MA's), (6, 6918), (14, 7011), (16, 7041), (17, 7056), (23, 7128), (24, 7134),
(27, 7155), (29, 7191), (32, 7215),

Gene: PhredFlintston_11 Start: 6906, Stop: 7247, Start Num: 2
Candidate Starts for PhredFlintston_11:
(Start: 2 @6906 has 166 MA's), (6, 6918), (14, 7011), (16, 7041), (17, 7056), (23, 7128), (24, 7134),
(27, 7155), (29, 7191), (32, 7215),

Gene: Phriends_11 Start: 6906, Stop: 7247, Start Num: 2
Candidate Starts for Phriends_11:
(Start: 2 @6906 has 166 MA's), (6, 6918), (14, 7011), (16, 7041), (17, 7056), (23, 7128), (24, 7134),
(27, 7155), (29, 7191), (32, 7215),

Gene: Pikmin_10 Start: 7200, Stop: 7547, Start Num: 2
Candidate Starts for Pikmin_10:
(1, 7065), (Start: 2 @7200 has 166 MA's), (6, 7212), (12, 7296), (15, 7332), (17, 7356), (27, 7455), (34,
7536),

Gene: Pocket_11 Start: 7194, Stop: 7535, Start Num: 2
Candidate Starts for Pocket_11:
(Start: 2 @7194 has 166 MA's), (6, 7206), (14, 7299), (16, 7329), (17, 7344), (23, 7416), (24, 7422),
(27, 7443), (29, 7479), (32, 7503),

Gene: PrincePhergus_11 Start: 7159, Stop: 7500, Start Num: 2
Candidate Starts for PrincePhergus_11:

(Start: 2 @7159 has 166 MA's), (6, 7171), (15, 7285), (16, 7294), (17, 7309), (22, 7369), (24, 7387), (27, 7408), (32, 7468), (34, 7489),

Gene: PuppyEggo_11 Start: 6903, Stop: 7244, Start Num: 2

Candidate Starts for PuppyEggo_11:

(Start: 2 @6903 has 166 MA's), (6, 6915), (14, 7008), (16, 7038), (17, 7053), (23, 7125), (24, 7131), (27, 7152), (32, 7212),

Gene: QuadZero_12 Start: 7356, Stop: 7700, Start Num: 2

Candidate Starts for QuadZero_12:

(Start: 2 @7356 has 166 MA's), (9, 7410), (10, 7434), (12, 7452), (14, 7467), (17, 7512), (24, 7590), (25, 7596), (27, 7611),

Gene: Quartz_10 Start: 7109, Stop: 7456, Start Num: 2

Candidate Starts for Quartz_10:

(1, 6974), (Start: 2 @7109 has 166 MA's), (6, 7121), (15, 7241), (16, 7250), (17, 7265), (22, 7325), (24, 7343), (27, 7364), (32, 7424),

Gene: Raccoon_11 Start: 7308, Stop: 7649, Start Num: 2

Candidate Starts for Raccoon_11:

(Start: 2 @7308 has 166 MA's), (6, 7320), (17, 7458), (24, 7536), (27, 7557), (32, 7617),

Gene: Rapheph_11 Start: 6906, Stop: 7247, Start Num: 2

Candidate Starts for Rapheph_11:

(Start: 2 @6906 has 166 MA's), (6, 6918), (14, 7011), (16, 7041), (17, 7056), (23, 7128), (24, 7134), (27, 7155), (29, 7191), (32, 7215),

Gene: Raptor_11 Start: 6903, Stop: 7244, Start Num: 2

Candidate Starts for Raptor_11:

(Start: 2 @6903 has 166 MA's), (6, 6915), (14, 7008), (16, 7038), (17, 7053), (23, 7125), (24, 7131), (27, 7152), (32, 7212),

Gene: Redfield_11 Start: 7310, Stop: 7651, Start Num: 2

Candidate Starts for Redfield_11:

(Start: 2 @7310 has 166 MA's), (6, 7322), (17, 7460), (24, 7538), (27, 7559), (32, 7619),

Gene: Renzie_11 Start: 6894, Stop: 7235, Start Num: 2

Candidate Starts for Renzie_11:

(Start: 2 @6894 has 166 MA's), (6, 6906), (14, 6999), (16, 7029), (17, 7044), (23, 7116), (24, 7122), (27, 7143), (32, 7203),

Gene: Riyhil_11 Start: 6906, Stop: 7247, Start Num: 2

Candidate Starts for Riyhil_11:

(Start: 2 @6906 has 166 MA's), (6, 6918), (14, 7011), (16, 7041), (17, 7056), (23, 7128), (24, 7134), (27, 7155), (29, 7191), (32, 7215),

Gene: Robinson_11 Start: 6897, Stop: 7238, Start Num: 2

Candidate Starts for Robinson_11:

(Start: 2 @6897 has 166 MA's), (6, 6909), (14, 7002), (16, 7032), (17, 7047), (23, 7119), (24, 7125), (27, 7146), (32, 7206),

Gene: Rog141_11 Start: 7196, Stop: 7537, Start Num: 2

Candidate Starts for Rog141_11:

(Start: 2 @7196 has 166 MA's), (6, 7208), (14, 7301), (16, 7331), (17, 7346), (23, 7418), (24, 7424), (27, 7445), (29, 7481), (32, 7505),

Gene: SJay_11 Start: 6901, Stop: 7242, Start Num: 2

Candidate Starts for SJay_11:

(Start: 2 @6901 has 166 MA's), (6, 6913), (14, 7006), (16, 7036), (17, 7051), (23, 7123), (24, 7129), (27, 7150), (29, 7186), (32, 7210),

Gene: Sansa_9 Start: 6954, Stop: 7301, Start Num: 2

Candidate Starts for Sansa_9:

(1, 6816), (Start: 2 @6954 has 166 MA's), (6, 6966), (9, 7008), (12, 7050), (15, 7086), (17, 7110), (22, 7170), (24, 7188), (27, 7209), (28, 7230), (31, 7260),

Gene: Saratos_10 Start: 6934, Stop: 7281, Start Num: 2

Candidate Starts for Saratos_10:

(1, 6796), (Start: 2 @6934 has 166 MA's), (6, 6946), (9, 6988), (12, 7030), (15, 7066), (17, 7090), (24, 7168), (27, 7189), (28, 7210), (31, 7240),

Gene: Schimmels22_12 Start: 7804, Stop: 8148, Start Num: 2

Candidate Starts for Schimmels22_12:

(Start: 2 @7804 has 166 MA's), (9, 7858), (12, 7900), (15, 7936), (17, 7960), (24, 8038), (27, 8059),

Gene: Schnapsidee_11 Start: 7301, Stop: 7642, Start Num: 2

Candidate Starts for Schnapsidee_11:

(Start: 2 @7301 has 166 MA's), (6, 7313), (17, 7451), (24, 7529), (27, 7550), (32, 7610),

Gene: Schubert_11 Start: 7352, Stop: 7693, Start Num: 2

Candidate Starts for Schubert_11:

(Start: 2 @7352 has 166 MA's), (6, 7364), (12, 7442), (14, 7457), (16, 7487), (17, 7502), (22, 7562), (27, 7601),

Gene: Sedgewig_11 Start: 7196, Stop: 7537, Start Num: 2

Candidate Starts for Sedgewig_11:

(Start: 2 @7196 has 166 MA's), (6, 7208), (14, 7301), (16, 7331), (17, 7346), (23, 7418), (24, 7424), (27, 7445), (29, 7481), (32, 7505),

Gene: ShaiHulud_11 Start: 6903, Stop: 7244, Start Num: 2

Candidate Starts for ShaiHulud_11:

(Start: 2 @6903 has 166 MA's), (6, 6915), (14, 7008), (16, 7038), (17, 7053), (23, 7125), (24, 7131), (27, 7152), (32, 7212),

Gene: Shamu_10 Start: 6946, Stop: 7293, Start Num: 2

Candidate Starts for Shamu_10:

(1, 6808), (Start: 2 @6946 has 166 MA's), (6, 6958), (9, 7000), (12, 7042), (15, 7078), (17, 7102), (24, 7180), (27, 7201), (28, 7222), (31, 7252),

Gene: Shee_11 Start: 6903, Stop: 7244, Start Num: 2

Candidate Starts for Shee_11:

(Start: 2 @6903 has 166 MA's), (6, 6915), (14, 7008), (16, 7038), (17, 7053), (23, 7125), (24, 7131), (27, 7152), (29, 7188), (32, 7212),

Gene: Sinatra_11 Start: 7156, Stop: 7497, Start Num: 2

Candidate Starts for Sinatra_11:

(Start: 2 @7156 has 166 MA's), (6, 7168), (15, 7282), (16, 7291), (17, 7306), (22, 7366), (24, 7384), (27, 7405), (32, 7465),

Gene: SirVictor_11 Start: 7242, Stop: 7583, Start Num: 2

Candidate Starts for SirVictor_11:

(Start: 2 @7242 has 166 MA's), (6, 7254), (14, 7347), (15, 7368), (16, 7377), (17, 7392), (24, 7470), (27, 7491),

Gene: SoilGremlin_11 Start: 6903, Stop: 7244, Start Num: 2

Candidate Starts for SoilGremlin_11:

(Start: 2 @6903 has 166 MA's), (6, 6915), (14, 7008), (16, 7038), (17, 7053), (23, 7125), (24, 7131), (27, 7152), (29, 7188), (32, 7212),

Gene: SonOfLevi_11 Start: 7188, Stop: 7529, Start Num: 2

Candidate Starts for SonOfLevi_11:

(Start: 2 @7188 has 166 MA's), (6, 7200), (14, 7293), (16, 7323), (17, 7338), (23, 7410), (24, 7416), (27, 7437), (32, 7497),

Gene: Stanktossa_11 Start: 6906, Stop: 7247, Start Num: 2

Candidate Starts for Stanktossa_11:

(Start: 2 @6906 has 166 MA's), (6, 6918), (14, 7011), (16, 7041), (17, 7056), (23, 7128), (24, 7134), (27, 7155), (29, 7191), (32, 7215),

Gene: StingRay_11 Start: 7196, Stop: 7537, Start Num: 2

Candidate Starts for StingRay_11:

(Start: 2 @7196 has 166 MA's), (6, 7208), (14, 7301), (16, 7331), (17, 7346), (23, 7418), (24, 7424), (27, 7445), (29, 7481), (32, 7505),

Gene: StirfryIV_11 Start: 7196, Stop: 7537, Start Num: 2

Candidate Starts for StirfryIV_11:

(Start: 2 @7196 has 166 MA's), (6, 7208), (14, 7301), (16, 7331), (17, 7346), (23, 7418), (24, 7424), (27, 7445), (29, 7481), (32, 7505),

Gene: Stormbreaker8_11 Start: 7302, Stop: 7643, Start Num: 2

Candidate Starts for Stormbreaker8_11:

(Start: 2 @7302 has 166 MA's), (6, 7314), (17, 7452), (24, 7530), (27, 7551), (32, 7611),

Gene: Strathdee_11 Start: 6904, Stop: 7245, Start Num: 2

Candidate Starts for Strathdee_11:

(Start: 2 @6904 has 166 MA's), (6, 6916), (14, 7009), (16, 7039), (17, 7054), (23, 7126), (24, 7132), (27, 7153), (32, 7213),

Gene: Superfresh_11 Start: 6894, Stop: 7235, Start Num: 2

Candidate Starts for Superfresh_11:

(Start: 2 @6894 has 166 MA's), (6, 6906), (14, 6999), (16, 7029), (17, 7044), (23, 7116), (24, 7122), (27, 7143), (32, 7203),

Gene: TatarkaPM_11 Start: 6906, Stop: 7247, Start Num: 2

Candidate Starts for TatarkaPM_11:

(Start: 2 @6906 has 166 MA's), (6, 6918), (14, 7011), (16, 7041), (17, 7056), (23, 7128), (24, 7134), (27, 7155), (29, 7191), (32, 7215),

Gene: Teagan_11 Start: 6900, Stop: 7241, Start Num: 2

Candidate Starts for Teagan_11:

(Start: 2 @6900 has 166 MA's), (6, 6912), (14, 7005), (16, 7035), (17, 7050), (23, 7122), (24, 7128), (27, 7149), (29, 7185), (32, 7209),

Gene: TeddyBear_11 Start: 7209, Stop: 7550, Start Num: 2

Candidate Starts for TeddyBear_11:

(Start: 2 @7209 has 166 MA's), (6, 7221), (14, 7314), (16, 7344), (17, 7359), (23, 7431), (24, 7437), (27, 7458), (29, 7494), (32, 7518),

Gene: Tenda_11 Start: 7207, Stop: 7548, Start Num: 2

Candidate Starts for Tenda_11:

(Start: 2 @7207 has 166 MA's), (6, 7219), (14, 7312), (16, 7342), (17, 7357), (23, 7429), (24, 7435), (27, 7456), (29, 7492), (32, 7516),

Gene: Theresita_11 Start: 6740, Stop: 7087, Start Num: 2

Candidate Starts for Theresita_11:

(Start: 2 @6740 has 166 MA's), (6, 6752), (10, 6818), (15, 6872), (16, 6881), (17, 6896), (20, 6923), (22, 6956), (24, 6974),

Gene: Thompsone_11 Start: 6903, Stop: 7244, Start Num: 2

Candidate Starts for Thompsone_11:

(Start: 2 @6903 has 166 MA's), (6, 6915), (14, 7008), (16, 7038), (17, 7053), (23, 7125), (24, 7131), (27, 7152), (32, 7212),

Gene: Thorongil_11 Start: 6903, Stop: 7244, Start Num: 2

Candidate Starts for Thorongil_11:

(Start: 2 @6903 has 166 MA's), (6, 6915), (14, 7008), (16, 7038), (17, 7053), (23, 7125), (24, 7131), (27, 7152), (32, 7212),

Gene: TinSulphur_11 Start: 6906, Stop: 7247, Start Num: 2

Candidate Starts for TinSulphur_11:

(Start: 2 @6906 has 166 MA's), (6, 6918), (14, 7011), (16, 7041), (17, 7056), (23, 7128), (24, 7134), (27, 7155), (29, 7191), (32, 7215),

Gene: Tinyman4_12 Start: 7445, Stop: 7789, Start Num: 2

Candidate Starts for Tinyman4_12:

(Start: 2 @7445 has 166 MA's), (9, 7499), (15, 7577), (17, 7601), (24, 7679), (27, 7700),

Gene: Velene_11 Start: 6903, Stop: 7244, Start Num: 2

Candidate Starts for Velene_11:

(Start: 2 @6903 has 166 MA's), (6, 6915), (14, 7008), (16, 7038), (17, 7053), (23, 7125), (24, 7131), (27, 7152), (32, 7212),

Gene: Vispitious_11 Start: 6903, Stop: 7244, Start Num: 2

Candidate Starts for Vispitious_11:

(Start: 2 @6903 has 166 MA's), (6, 6915), (14, 7008), (16, 7038), (17, 7053), (23, 7125), (24, 7131), (27, 7152), (32, 7212),

Gene: WestPM_11 Start: 7283, Stop: 7627, Start Num: 2

Candidate Starts for WestPM_11:

(Start: 2 @7283 has 166 MA's), (9, 7337), (12, 7379), (15, 7415), (17, 7439), (24, 7517), (27, 7538),

Gene: WildNOut_11 Start: 6903, Stop: 7244, Start Num: 2

Candidate Starts for WildNOut_11:

(Start: 2 @6903 has 166 MA's), (6, 6915), (14, 7008), (16, 7038), (17, 7053), (23, 7125), (24, 7131), (27, 7152), (32, 7212),

Gene: WilliamStrong_10 Start: 7937, Stop: 8284, Start Num: 2

Candidate Starts for WilliamStrong_10:

(Start: 2 @7937 has 166 MA's), (5, 7949), (6, 7955), (13, 8045), (15, 8075), (17, 8099), (24, 8174), (27, 8195),

Gene: Winzigespinne_11 Start: 7195, Stop: 7536, Start Num: 2

Candidate Starts for Winzigespinne_11:

(Start: 2 @7195 has 166 MA's), (6, 7207), (14, 7300), (16, 7330), (17, 7345), (23, 7417), (24, 7423), (27, 7444), (29, 7480), (32, 7504),

Gene: YuuY_10 Start: 7103, Stop: 7450, Start Num: 2

Candidate Starts for YuuY_10:

(Start: 2 @7103 has 166 MA's), (6, 7115), (12, 7199), (15, 7235), (16, 7244), (17, 7259), (22, 7319), (24, 7337), (25, 7343), (27, 7358),

Gene: Zada_11 Start: 6897, Stop: 7238, Start Num: 2

Candidate Starts for Zada_11:

(Start: 2 @6897 has 166 MA's), (6, 6909), (14, 7002), (16, 7032), (17, 7047), (23, 7119), (24, 7125), (27, 7146), (32, 7206),

Gene: Zayuliv_12 Start: 7332, Stop: 7676, Start Num: 2

Candidate Starts for Zayuliv_12:

(Start: 2 @7332 has 166 MA's), (9, 7386), (10, 7410), (12, 7428), (14, 7443), (17, 7488), (24, 7566), (25, 7572), (27, 7587),

Gene: Zenitsu_10 Start: 6958, Stop: 7305, Start Num: 2

Candidate Starts for Zenitsu_10:

(1, 6820), (Start: 2 @6958 has 166 MA's), (6, 6970), (9, 7012), (12, 7054), (15, 7090), (17, 7114), (24, 7192), (27, 7213), (28, 7234), (31, 7264),

Gene: Zepp_13 Start: 7341, Stop: 7685, Start Num: 2

Candidate Starts for Zepp_13:

(Start: 2 @7341 has 166 MA's), (9, 7395), (10, 7419), (12, 7437), (14, 7452), (17, 7497), (24, 7575), (25, 7581), (27, 7596),