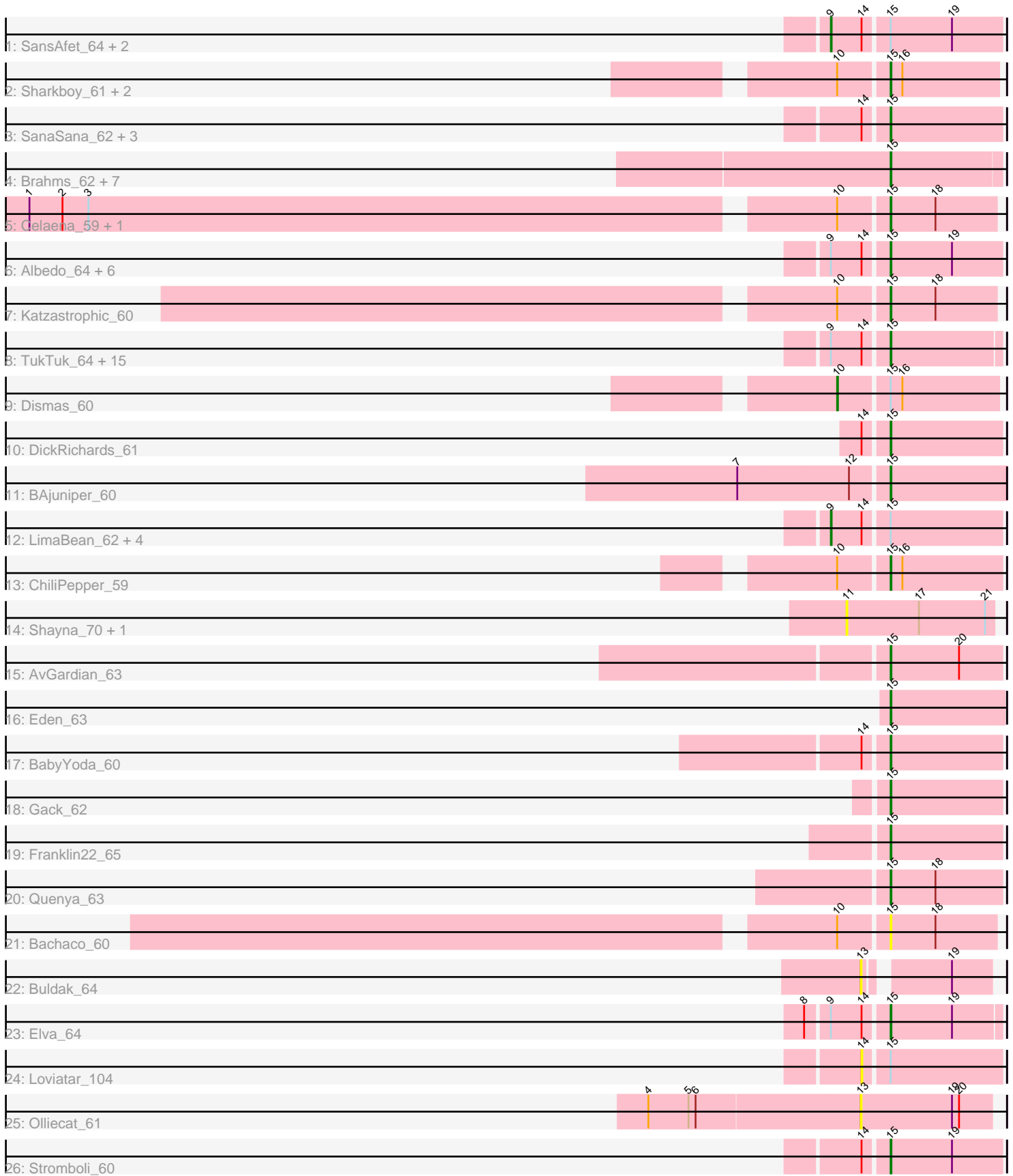


Pham 166710



Note: Tracks are now grouped by subcluster and scaled. Switching in subcluster is indicated by changes in track color. Track scale is now set by default to display the region 30 bp upstream of start 1 to 30 bp downstream of the last possible start. If this default region is judged to be packed too tightly with annotated starts, the track will be further scaled to only show that region of the ORF with annotated starts. This action will be indicated by adding "Zoomed" to the title. For starts, yellow indicates the location of called starts comprised solely of Glimmer/GeneMark auto-annotations, green indicates the location of called starts with at least 1 manual gene annotation.

Pham 166710 Report

This analysis was run 07/09/24 on database version 566.

Pham number 166710 has 67 members, 7 are drafts.

Phages represented in each track:

- Track 1 : SansAfet_64, Lahqtemish_63, BabyDaisy_65
- Track 2 : Sharkboy_61, Kieran_59, Rona_59
- Track 3 : SanaSana_62, Stoor_60, DirtyBubble_60, Icarian_63
- Track 4 : Brahms_62, Bernstein_62, Clayda5_64, Rollins_62, Skylord_62, Vitas_62, Armstrong_62, Coltrane_62
- Track 5 : Celaena_59, FlameThrower_58
- Track 6 : Albedo_64, Phisb_64, BubbaBear_62, IndyLu_65, Didgeridoo_68, Albright_62, Abigail_62
- Track 7 : Katzastrophic_60
- Track 8 : TukTuk_64, Cashington_62, Finalfrontier_63, Johnathan_62, Avacadoman_62, BelmontSKP_62, Swervy_63, Jovita_61, CroZenni_63, Kenzers_62, QMacho_64, Eula_62, Doobus_61, Slay_64, Lynlen_63, SarBear_63
- Track 9 : Dismas_60
- Track 10 : DickRichards_61
- Track 11 : BAjuniper_60
- Track 12 : LimaBean_62, Arroyo_63, AnnaLie_62, Burritobowl_64, Nicky22_62
- Track 13 : ChiliPepper_59
- Track 14 : Shayna_70, SunnyD_73
- Track 15 : AvGardian_63
- Track 16 : Eden_63
- Track 17 : BabyYoda_60
- Track 18 : Gack_62
- Track 19 : Franklin22_65
- Track 20 : Quenya_63
- Track 21 : Bachaco_60
- Track 22 : Buldak_64
- Track 23 : Elva_64
- Track 24 : Loviatar_104
- Track 25 : Olliecat_61
- Track 26 : Stromboli_60

Summary of Final Annotations (See graph section above for start numbers):

The start number called the most often in the published annotations is 15, it was called in 51 of the 60 non-draft genes in the pham.

Genes that call this "Most Annotated" start:

- Abigail_62, Albedo_64, Albright_62, Armstrong_62, AvGardian_63, Avocadoman_62, BAjuniper_60, BabyYoda_60, Bachaco_60, BelmontSKP_62, Bernstein_62, Brahms_62, BubbaBear_62, Cashington_62, Celaena_59, ChiliPepper_59, Clayda5_64, Coltrane_62, CroZenni_63, DickRichards_61, Didgeridoo_68, DirtyBubble_60, Doobus_61, Eden_63, Elva_64, Eula_62, Finalfrontier_63, FlameThrower_58, Franklin22_65, Gack_62, Icarian_63, IndyLu_65, Johnathan_62, Jovita_61, Katzastrophic_60, Kenzers_62, Kieran_59, Lynlen_63, Phisb_64, QMacho_64, Quenya_63, Rollins_62, Rona_59, SanaSana_62, SarBear_63, Sharkboy_61, Skylord_62, Slay_64, Stoor_60, Stromboli_60, Swervy_63, TukTuk_64, Vitas_62,

Genes that have the "Most Annotated" start but do not call it:

- AnnaLie_62, Arroyo_63, BabyDaisy_65, Burritobowl_64, Dismas_60, Lahqtemish_63, LimaBean_62, Loviatar_104, Nicky22_62, SansAfet_64,

Genes that do not have the "Most Annotated" start:

- Buldak_64, Olliecat_61, Shayna_70, SunnyD_73,

Summary by start number:

Start 9:

- Found in 32 of 67 (47.8%) of genes in pham
- Manual Annotations of this start: 8 of 60
- Called 25.0% of time when present
- Phage (with cluster) where this start called: AnnaLie_62 (EB), Arroyo_63 (EB), BabyDaisy_65 (EB), Burritobowl_64 (EB), Lahqtemish_63 (EB), LimaBean_62 (EB), Nicky22_62 (EB), SansAfet_64 (EB),

Start 10:

- Found in 9 of 67 (13.4%) of genes in pham
- Manual Annotations of this start: 1 of 60
- Called 11.1% of time when present
- Phage (with cluster) where this start called: Dismas_60 (EB),

Start 11:

- Found in 2 of 67 (3.0%) of genes in pham
- No Manual Annotations of this start.
- Called 100.0% of time when present
- Phage (with cluster) where this start called: Shayna_70 (EB), SunnyD_73 (EB),

Start 13:

- Found in 2 of 67 (3.0%) of genes in pham
- No Manual Annotations of this start.
- Called 100.0% of time when present
- Phage (with cluster) where this start called: Buldak_64 (EB), Olliecat_61 (EB),

Start 14:

- Found in 40 of 67 (59.7%) of genes in pham
- No Manual Annotations of this start.

- Called 2.5% of time when present
- Phage (with cluster) where this start called: Loviatar_104 (EB),

Start 15:

- Found in 63 of 67 (94.0%) of genes in pham
- Manual Annotations of this start: 51 of 60
- Called 84.1% of time when present
- Phage (with cluster) where this start called: Abigail_62 (EB), Albedo_64 (EB), Albright_62 (EB), Armstrong_62 (EB), AvGardian_63 (EB), Avocadoman_62 (EB), BAjuniper_60 (EB), BabyYoda_60 (EB), Bachaco_60 (EB), BelmontSKP_62 (EB), Bernstein_62 (EB), Brahms_62 (EB), BubbaBear_62 (EB), Cashington_62 (EB), Celaena_59 (EB), ChiliPepper_59 (EB), Clayda5_64 (EB), Coltrane_62 (EB), CroZenni_63 (EB), DickRichards_61 (EB), Didgeridoo_68 (EB), DirtyBubble_60 (EB), Doobus_61 (EB), Eden_63 (EB), Elva_64 (EB), Eula_62 (EB), Finalfrontier_63 (EB), FlameThrower_58 (EB), Franklin22_65 (EB), Gack_62 (EB), Icarian_63 (EB), IndyLu_65 (EB), Johnathan_62 (EB), Jovita_61 (EB), Katzastrophic_60 (EB), Kenzers_62 (EB), Kieran_59 (EB), Lynlen_63 (EB), Phisb_64 (EB), QMacho_64 (EB), Quenya_63 (EB), Rollins_62 (EB), Rona_59 (EB), SanaSana_62 (EB), SarBear_63 (EB), Sharkboy_61 (EB), Skylord_62 (EB), Slay_64 (EB), Stoor_60 (EB), Stromboli_60 (EB), Swervy_63 (EB), TukTuk_64 (EB), Vitas_62 (EB),

Summary by clusters:

There is one cluster represented in this pham: EB

Info for manual annotations of cluster EB:

- Start number 9 was manually annotated 8 times for cluster EB.
- Start number 10 was manually annotated 1 time for cluster EB.
- Start number 15 was manually annotated 51 times for cluster EB.

Gene Information:

Gene: Abigail_62 Start: 38976, Stop: 39116, Start Num: 15

Candidate Starts for Abigail_62:

(Start: 9 @38910 has 8 MA's), (14, 38949), (Start: 15 @38976 has 51 MA's), (19, 39054),

Gene: Albedo_64 Start: 39896, Stop: 40036, Start Num: 15

Candidate Starts for Albedo_64:

(Start: 9 @39830 has 8 MA's), (14, 39869), (Start: 15 @39896 has 51 MA's), (19, 39974),

Gene: Albright_62 Start: 38958, Stop: 39098, Start Num: 15

Candidate Starts for Albright_62:

(Start: 9 @38892 has 8 MA's), (14, 38931), (Start: 15 @38958 has 51 MA's), (19, 39036),

Gene: AnnaLie_62 Start: 39565, Stop: 39771, Start Num: 9

Candidate Starts for AnnaLie_62:

(Start: 9 @39565 has 8 MA's), (14, 39604), (Start: 15 @39631 has 51 MA's),

Gene: Armstrong_62 Start: 37649, Stop: 37786, Start Num: 15

Candidate Starts for Armstrong_62:

(Start: 15 @37649 has 51 MA's),

Gene: Arroyo_63 Start: 39867, Stop: 40070, Start Num: 9
Candidate Starts for Arroyo_63:
(Start: 9 @39867 has 8 MA's), (14, 39906), (Start: 15 @39933 has 51 MA's),

Gene: AvGardian_63 Start: 39698, Stop: 39838, Start Num: 15
Candidate Starts for AvGardian_63:
(Start: 15 @39698 has 51 MA's), (20, 39785),

Gene: Avocadoman_62 Start: 38904, Stop: 39041, Start Num: 15
Candidate Starts for Avocadoman_62:
(Start: 9 @38838 has 8 MA's), (14, 38877), (Start: 15 @38904 has 51 MA's),

Gene: BAjuniper_60 Start: 39708, Stop: 39854, Start Num: 15
Candidate Starts for BAjuniper_60:
(7, 39525), (12, 39663), (Start: 15 @39708 has 51 MA's),

Gene: BabyDaisy_65 Start: 40375, Stop: 40581, Start Num: 9
Candidate Starts for BabyDaisy_65:
(Start: 9 @40375 has 8 MA's), (14, 40414), (Start: 15 @40441 has 51 MA's), (19, 40519),

Gene: BabyYoda_60 Start: 39344, Stop: 39484, Start Num: 15
Candidate Starts for BabyYoda_60:
(14, 39317), (Start: 15 @39344 has 51 MA's),

Gene: Bachaco_60 Start: 40387, Stop: 40521, Start Num: 15
Candidate Starts for Bachaco_60:
(Start: 10 @40327 has 1 MA's), (Start: 15 @40387 has 51 MA's), (18, 40444),

Gene: BelmontSKP_62 Start: 39631, Stop: 39771, Start Num: 15
Candidate Starts for BelmontSKP_62:
(Start: 9 @39565 has 8 MA's), (14, 39604), (Start: 15 @39631 has 51 MA's),

Gene: Bernstein_62 Start: 37647, Stop: 37784, Start Num: 15
Candidate Starts for Bernstein_62:
(Start: 15 @37647 has 51 MA's),

Gene: Brahms_62 Start: 37549, Stop: 37686, Start Num: 15
Candidate Starts for Brahms_62:
(Start: 15 @37549 has 51 MA's),

Gene: BubbaBear_62 Start: 39688, Stop: 39825, Start Num: 15
Candidate Starts for BubbaBear_62:
(Start: 9 @39622 has 8 MA's), (14, 39661), (Start: 15 @39688 has 51 MA's), (19, 39766),

Gene: Buldak_64 Start: 37507, Stop: 37647, Start Num: 13
Candidate Starts for Buldak_64:
(13, 37507), (19, 37597),

Gene: Burritobowl_64 Start: 39393, Stop: 39599, Start Num: 9
Candidate Starts for Burritobowl_64:
(Start: 9 @39393 has 8 MA's), (14, 39432), (Start: 15 @39459 has 51 MA's),

Gene: Cashington_62 Start: 39035, Stop: 39172, Start Num: 15
Candidate Starts for Cashington_62:
(Start: 9 @38969 has 8 MA's), (14, 39008), (Start: 15 @39035 has 51 MA's),

Gene: Celaena_59 Start: 40149, Stop: 40283, Start Num: 15
Candidate Starts for Celaena_59:
(1, 39096), (2, 39138), (3, 39171), (Start: 10 @40089 has 1 MA's), (Start: 15 @40149 has 51 MA's),
(18, 40206),

Gene: ChiliPepper_59 Start: 39702, Stop: 39842, Start Num: 15
Candidate Starts for ChiliPepper_59:
(Start: 10 @39642 has 1 MA's), (Start: 15 @39702 has 51 MA's), (16, 39717),

Gene: Clayda5_64 Start: 37614, Stop: 37751, Start Num: 15
Candidate Starts for Clayda5_64:
(Start: 15 @37614 has 51 MA's),

Gene: Coltrane_62 Start: 37549, Stop: 37686, Start Num: 15
Candidate Starts for Coltrane_62:
(Start: 15 @37549 has 51 MA's),

Gene: CroZenni_63 Start: 39258, Stop: 39395, Start Num: 15
Candidate Starts for CroZenni_63:
(Start: 9 @39192 has 8 MA's), (14, 39231), (Start: 15 @39258 has 51 MA's),

Gene: DickRichards_61 Start: 39415, Stop: 39555, Start Num: 15
Candidate Starts for DickRichards_61:
(14, 39388), (Start: 15 @39415 has 51 MA's),

Gene: Didgeridoo_68 Start: 40551, Stop: 40691, Start Num: 15
Candidate Starts for Didgeridoo_68:
(Start: 9 @40485 has 8 MA's), (14, 40524), (Start: 15 @40551 has 51 MA's), (19, 40629),

Gene: DirtyBubble_60 Start: 39383, Stop: 39523, Start Num: 15
Candidate Starts for DirtyBubble_60:
(14, 39356), (Start: 15 @39383 has 51 MA's),

Gene: Dismas_60 Start: 39563, Stop: 39760, Start Num: 10
Candidate Starts for Dismas_60:
(Start: 10 @39563 has 1 MA's), (Start: 15 @39623 has 51 MA's), (16, 39638),

Gene: Doobus_61 Start: 39090, Stop: 39227, Start Num: 15
Candidate Starts for Doobus_61:
(Start: 9 @39024 has 8 MA's), (14, 39063), (Start: 15 @39090 has 51 MA's),

Gene: Eden_63 Start: 38448, Stop: 38591, Start Num: 15
Candidate Starts for Eden_63:
(Start: 15 @38448 has 51 MA's),

Gene: Elva_64 Start: 40115, Stop: 40252, Start Num: 15
Candidate Starts for Elva_64:
(8, 40022), (Start: 9 @40049 has 8 MA's), (14, 40088), (Start: 15 @40115 has 51 MA's), (19, 40193),

Gene: Eula_62 Start: 38999, Stop: 39136, Start Num: 15
Candidate Starts for Eula_62:
(Start: 9 @38933 has 8 MA's), (14, 38972), (Start: 15 @38999 has 51 MA's),

Gene: Finalfrontier_63 Start: 40163, Stop: 40303, Start Num: 15
Candidate Starts for Finalfrontier_63:
(Start: 9 @40097 has 8 MA's), (14, 40136), (Start: 15 @40163 has 51 MA's),

Gene: FlameThrower_58 Start: 39186, Stop: 39320, Start Num: 15
Candidate Starts for FlameThrower_58:
(1, 38133), (2, 38175), (3, 38208), (Start: 10 @39126 has 1 MA's), (Start: 15 @39186 has 51 MA's),
(18, 39243),

Gene: Franklin22_65 Start: 38170, Stop: 38310, Start Num: 15
Candidate Starts for Franklin22_65:
(Start: 15 @38170 has 51 MA's),

Gene: Gack_62 Start: 38076, Stop: 38216, Start Num: 15
Candidate Starts for Gack_62:
(Start: 15 @38076 has 51 MA's),

Gene: Icarian_63 Start: 40033, Stop: 40173, Start Num: 15
Candidate Starts for Icarian_63:
(14, 40006), (Start: 15 @40033 has 51 MA's),

Gene: IndyLu_65 Start: 40172, Stop: 40312, Start Num: 15
Candidate Starts for IndyLu_65:
(Start: 9 @40106 has 8 MA's), (14, 40145), (Start: 15 @40172 has 51 MA's), (19, 40250),

Gene: Johnathan_62 Start: 38959, Stop: 39099, Start Num: 15
Candidate Starts for Johnathan_62:
(Start: 9 @38893 has 8 MA's), (14, 38932), (Start: 15 @38959 has 51 MA's),

Gene: Jovita_61 Start: 38770, Stop: 38907, Start Num: 15
Candidate Starts for Jovita_61:
(Start: 9 @38704 has 8 MA's), (14, 38743), (Start: 15 @38770 has 51 MA's),

Gene: Katzastrophic_60 Start: 39696, Stop: 39830, Start Num: 15
Candidate Starts for Katzastrophic_60:
(Start: 10 @39636 has 1 MA's), (Start: 15 @39696 has 51 MA's), (18, 39753),

Gene: Kenzers_62 Start: 38829, Stop: 38966, Start Num: 15
Candidate Starts for Kenzers_62:
(Start: 9 @38763 has 8 MA's), (14, 38802), (Start: 15 @38829 has 51 MA's),

Gene: Kieran_59 Start: 39664, Stop: 39804, Start Num: 15
Candidate Starts for Kieran_59:
(Start: 10 @39604 has 1 MA's), (Start: 15 @39664 has 51 MA's), (16, 39679),

Gene: Lahqtemish_63 Start: 40119, Stop: 40322, Start Num: 9
Candidate Starts for Lahqtemish_63:
(Start: 9 @40119 has 8 MA's), (14, 40158), (Start: 15 @40185 has 51 MA's), (19, 40263),

Gene: LimaBean_62 Start: 38787, Stop: 38993, Start Num: 9
Candidate Starts for LimaBean_62:
(Start: 9 @38787 has 8 MA's), (14, 38826), (Start: 15 @38853 has 51 MA's),

Gene: Loviatar_104 Start: 40424, Stop: 40591, Start Num: 14
Candidate Starts for Loviatar_104:
(14, 40424), (Start: 15 @40451 has 51 MA's),

Gene: Lynlen_63 Start: 39012, Stop: 39149, Start Num: 15
Candidate Starts for Lynlen_63:
(Start: 9 @38946 has 8 MA's), (14, 38985), (Start: 15 @39012 has 51 MA's),

Gene: Nicky22_62 Start: 39355, Stop: 39558, Start Num: 9
Candidate Starts for Nicky22_62:
(Start: 9 @39355 has 8 MA's), (14, 39394), (Start: 15 @39421 has 51 MA's),

Gene: Olliecat_61 Start: 37393, Stop: 37557, Start Num: 13
Candidate Starts for Olliecat_61:
(4, 37129), (5, 37180), (6, 37189), (13, 37393), (19, 37507), (20, 37516),

Gene: Phisb_64 Start: 39528, Stop: 39668, Start Num: 15
Candidate Starts for Phisb_64:
(Start: 9 @39462 has 8 MA's), (14, 39501), (Start: 15 @39528 has 51 MA's), (19, 39606),

Gene: QMacho_64 Start: 39659, Stop: 39799, Start Num: 15
Candidate Starts for QMacho_64:
(Start: 9 @39593 has 8 MA's), (14, 39632), (Start: 15 @39659 has 51 MA's),

Gene: Quenya_63 Start: 40087, Stop: 40227, Start Num: 15
Candidate Starts for Quenya_63:
(Start: 15 @40087 has 51 MA's), (18, 40144),

Gene: Rollins_62 Start: 37647, Stop: 37784, Start Num: 15
Candidate Starts for Rollins_62:
(Start: 15 @37647 has 51 MA's),

Gene: Rona_59 Start: 39614, Stop: 39751, Start Num: 15
Candidate Starts for Rona_59:
(Start: 10 @39554 has 1 MA's), (Start: 15 @39614 has 51 MA's), (16, 39629),

Gene: SanaSana_62 Start: 39794, Stop: 39934, Start Num: 15
Candidate Starts for SanaSana_62:
(14, 39767), (Start: 15 @39794 has 51 MA's),

Gene: SansAfet_64 Start: 39438, Stop: 39644, Start Num: 9
Candidate Starts for SansAfet_64:
(Start: 9 @39438 has 8 MA's), (14, 39477), (Start: 15 @39504 has 51 MA's), (19, 39582),

Gene: SarBear_63 Start: 39068, Stop: 39205, Start Num: 15
Candidate Starts for SarBear_63:
(Start: 9 @39002 has 8 MA's), (14, 39041), (Start: 15 @39068 has 51 MA's),

Gene: Sharkboy_61 Start: 39988, Stop: 40125, Start Num: 15

Candidate Starts for Sharkboy_61:
(Start: 10 @39928 has 1 MA's), (Start: 15 @39988 has 51 MA's), (16, 40003),

Gene: Shayna_70 Start: 39636, Stop: 39821, Start Num: 11
Candidate Starts for Shayna_70:
(11, 39636), (17, 39726), (21, 39810),

Gene: Skylord_62 Start: 37564, Stop: 37701, Start Num: 15
Candidate Starts for Skylord_62:
(Start: 15 @37564 has 51 MA's),

Gene: Slay_64 Start: 40038, Stop: 40178, Start Num: 15
Candidate Starts for Slay_64:
(Start: 9 @39972 has 8 MA's), (14, 40011), (Start: 15 @40038 has 51 MA's),

Gene: Stoor_60 Start: 39581, Stop: 39721, Start Num: 15
Candidate Starts for Stoor_60:
(14, 39554), (Start: 15 @39581 has 51 MA's),

Gene: Stromboli_60 Start: 39382, Stop: 39522, Start Num: 15
Candidate Starts for Stromboli_60:
(14, 39355), (Start: 15 @39382 has 51 MA's), (19, 39460),

Gene: SunnyD_73 Start: 39636, Stop: 39821, Start Num: 11
Candidate Starts for SunnyD_73:
(11, 39636), (17, 39726), (21, 39810),

Gene: Swervy_63 Start: 39132, Stop: 39269, Start Num: 15
Candidate Starts for Swervy_63:
(Start: 9 @39066 has 8 MA's), (14, 39105), (Start: 15 @39132 has 51 MA's),

Gene: TukTuk_64 Start: 39577, Stop: 39714, Start Num: 15
Candidate Starts for TukTuk_64:
(Start: 9 @39511 has 8 MA's), (14, 39550), (Start: 15 @39577 has 51 MA's),

Gene: Vitas_62 Start: 37620, Stop: 37757, Start Num: 15
Candidate Starts for Vitas_62:
(Start: 15 @37620 has 51 MA's),