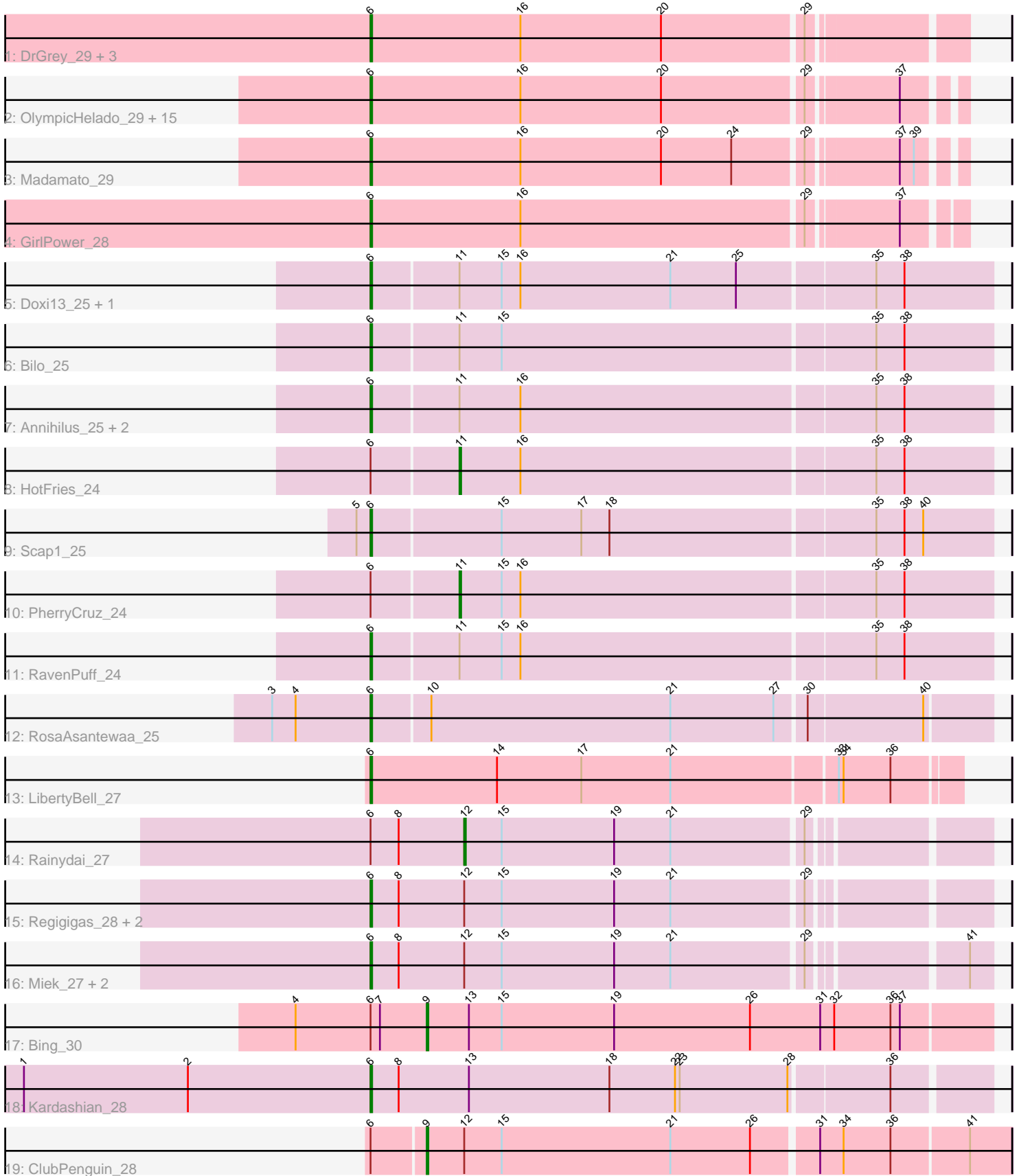


# Pham 166797



Note: Tracks are now grouped by subcluster and scaled. Switching in subcluster is indicated by changes in track color. Track scale is now set by default to display the region 30 bp upstream of start 1 to 30 bp downstream of the last possible start. If this default region is judged to be packed too tightly with annotated starts, the track will be further scaled to only show that region of the ORF with annotated starts. This action will be indicated by adding "Zoomed" to the title. For starts, yellow indicates the location of called starts comprised solely of Glimmer/GeneMark auto-annotations, green indicates the location of called starts with at least 1 manual gene annotation.

## Pham 166797 Report

This analysis was run 07/09/24 on database version 566.

Pham number 166797 has 44 members, 2 are drafts.

Phages represented in each track:

- Track 1 : DrGrey\_29, Popy\_29, Soshi\_29, FrodoSwaggins\_29
- Track 2 : OlympicHelado\_29, Jaylociraptor\_29, Hoshi\_29, IceWarrior\_29, Indigenous\_29, FidgetOrca\_29, CherryBlossom\_29, TaidaOne\_29, Rima\_29, Esketit\_29, Namu\_29, TonyStarch\_29, Spectropatronm\_29, Maya\_29, Meibysrarus\_29, TieDye\_28
- Track 3 : Madamoto\_29
- Track 4 : GirlPower\_28
- Track 5 : Doxi13\_25, GoblinVoyage\_25
- Track 6 : Bilo\_25
- Track 7 : Annihilus\_25, Moozy\_25, SheRa\_25
- Track 8 : HotFries\_24
- Track 9 : Scap1\_25
- Track 10 : PherryCruz\_24
- Track 11 : RavenPuff\_24
- Track 12 : RosaAsantewaa\_25
- Track 13 : LibertyBell\_27
- Track 14 : Rainydai\_27
- Track 15 : Regigigas\_28, CricKo\_27, Thiqqums\_27
- Track 16 : Miek\_27, FromIndy\_28, SendItCS\_26
- Track 17 : Bing\_30
- Track 18 : Kardashian\_28
- Track 19 : ClubPenguin\_28

### ***Summary of Final Annotations (See graph section above for start numbers):***

The start number called the most often in the published annotations is 6, it was called in 37 of the 42 non-draft genes in the pham.

Genes that call this "Most Annotated" start:

- Annihilus\_25, Bilo\_25, CherryBlossom\_29, CricKo\_27, Doxi13\_25, DrGrey\_29, Esketit\_29, FidgetOrca\_29, FrodoSwaggins\_29, FromIndy\_28, GirlPower\_28, GoblinVoyage\_25, Hoshi\_29, IceWarrior\_29, Indigenous\_29, Jaylociraptor\_29, Kardashian\_28, LibertyBell\_27, Madamoto\_29, Maya\_29, Meibysrarus\_29, Miek\_27, Moozy\_25, Namu\_29, OlympicHelado\_29, Popy\_29, RavenPuff\_24, Regigigas\_28,

Rima\_29, RosaAsantewaa\_25, Scap1\_25, SendItCS\_26, SheRa\_25, Soshi\_29, Spectropatronm\_29, TaidaOne\_29, Thiqqums\_27, TieDye\_28, TonyStarch\_29,

Genes that have the "Most Annotated" start but do not call it:

- Bing\_30, ClubPenguin\_28, HotFries\_24, PherryCruz\_24, Rainydai\_27,

Genes that do not have the "Most Annotated" start:

- 

### Summary by start number:

Start 6:

- Found in 44 of 44 ( 100.0% ) of genes in pham
- Manual Annotations of this start: 37 of 42
- Called 88.6% of time when present
- Phage (with cluster) where this start called: Annihilus\_25 (BI2), Bilo\_25 (BI2), CherryBlossom\_29 (BI1), CricKo\_27 (BI4), Doxi13\_25 (BI2), DrGrey\_29 (BI1), Esketit\_29 (BI1), FidgetOrca\_29 (BI1), FrodoSwaggins\_29 (BI1), FromIndy\_28 (BI4), GirlPower\_28 (BI1), GoblinVoyage\_25 (BI2), Hoshi\_29 (BI1), IceWarrior\_29 (BI1), Indigenous\_29 (BI1), Jaylociraptor\_29 (BI1), Kardashian\_28 (BI6), LibertyBell\_27 (BI3), Madamato\_29 (BI1), Maya\_29 (BI1), Meibysrarus\_29 (BI1), Miek\_27 (BI4), Moozy\_25 (BI2), Namu\_29 (BI1), OlympicHelado\_29 (BI1), Popy\_29 (BI1), RavenPuff\_24 (BI2), Regigigas\_28 (BI4), Rima\_29 (BI1), RosaAsantewaa\_25 (BI2), Scap1\_25 (BI2), SendItCS\_26 (BI4), SheRa\_25 (BI2), Soshi\_29 (BI1), Spectropatronm\_29 (BI1), TaidaOne\_29 (BI1), Thiqqums\_27 (BI4), TieDye\_28 (BI1), TonyStarch\_29 (BI1),

Start 9:

- Found in 2 of 44 ( 4.5% ) of genes in pham
- Manual Annotations of this start: 2 of 42
- Called 100.0% of time when present
- Phage (with cluster) where this start called: Bing\_30 (BI5), ClubPenguin\_28 (BI7),

Start 11:

- Found in 9 of 44 ( 20.5% ) of genes in pham
- Manual Annotations of this start: 2 of 42
- Called 22.2% of time when present
- Phage (with cluster) where this start called: HotFries\_24 (BI2), PherryCruz\_24 (BI2),

Start 12:

- Found in 8 of 44 ( 18.2% ) of genes in pham
- Manual Annotations of this start: 1 of 42
- Called 12.5% of time when present
- Phage (with cluster) where this start called: Rainydai\_27 (BI4),

### Summary by clusters:

There are 7 clusters represented in this pham: BI6, BI7, BI4, BI5, BI2, BI3, BI1,

Info for manual annotations of cluster BI1:

- Start number 6 was manually annotated 22 times for cluster BI1.

Info for manual annotations of cluster BI2:

- Start number 6 was manually annotated 9 times for cluster BI2.
- Start number 11 was manually annotated 2 times for cluster BI2.

Info for manual annotations of cluster BI3:

- Start number 6 was manually annotated 1 time for cluster BI3.

Info for manual annotations of cluster BI4:

- Start number 6 was manually annotated 4 times for cluster BI4.
- Start number 12 was manually annotated 1 time for cluster BI4.

Info for manual annotations of cluster BI5:

- Start number 9 was manually annotated 1 time for cluster BI5.

Info for manual annotations of cluster BI6:

- Start number 6 was manually annotated 1 time for cluster BI6.

Info for manual annotations of cluster BI7:

- Start number 9 was manually annotated 1 time for cluster BI7.

### **Gene Information:**

Gene: Annihilus\_25 Start: 22331, Stop: 22720, Start Num: 6

Candidate Starts for Annihilus\_25:

(Start: 6 @22331 has 37 MA's), (Start: 11 @22385 has 2 MA's), (16, 22424), (35, 22646), (38, 22664),

Gene: Bilo\_25 Start: 22822, Stop: 23211, Start Num: 6

Candidate Starts for Bilo\_25:

(Start: 6 @22822 has 37 MA's), (Start: 11 @22876 has 2 MA's), (15, 22903), (35, 23137), (38, 23155),

Gene: Bing\_30 Start: 25162, Stop: 25521, Start Num: 9

Candidate Starts for Bing\_30:

(4, 25078), (Start: 6 @25126 has 37 MA's), (7, 25132), (Start: 9 @25162 has 2 MA's), (13, 25189), (15, 25210), (19, 25282), (26, 25369), (31, 25414), (32, 25423), (36, 25459), (37, 25465),

Gene: CherryBlossom\_29 Start: 25276, Stop: 25635, Start Num: 6

Candidate Starts for CherryBlossom\_29:

(Start: 6 @25276 has 37 MA's), (16, 25372), (20, 25462), (29, 25549), (37, 25603),

Gene: ClubPenguin\_28 Start: 24936, Stop: 25301, Start Num: 9

Candidate Starts for ClubPenguin\_28:

(Start: 6 @24903 has 37 MA's), (Start: 9 @24936 has 2 MA's), (Start: 12 @24960 has 1 MA's), (15, 24984), (21, 25092), (26, 25143), (31, 25182), (34, 25197), (36, 25227), (41, 25275),

Gene: CricKo\_27 Start: 24163, Stop: 24540, Start Num: 6

Candidate Starts for CricKo\_27:

(Start: 6 @24163 has 37 MA's), (8, 24181), (Start: 12 @24223 has 1 MA's), (15, 24247), (19, 24319), (21, 24355), (29, 24436),

Gene: Doxi13\_25 Start: 22302, Stop: 22691, Start Num: 6

Candidate Starts for Doxi13\_25:

(Start: 6 @22302 has 37 MA's), (Start: 11 @22356 has 2 MA's), (15, 22383), (16, 22395), (21, 22491), (25, 22533), (35, 22617), (38, 22635),

Gene: DrGrey\_29 Start: 25776, Stop: 26141, Start Num: 6

Candidate Starts for DrGrey\_29:

(Start: 6 @25776 has 37 MA's), (16, 25872), (20, 25962), (29, 26049),

Gene: Esketit\_29 Start: 25259, Stop: 25618, Start Num: 6

Candidate Starts for Esketit\_29:

(Start: 6 @25259 has 37 MA's), (16, 25355), (20, 25445), (29, 25532), (37, 25586),

Gene: FidgetOrca\_29 Start: 25265, Stop: 25624, Start Num: 6

Candidate Starts for FidgetOrca\_29:

(Start: 6 @25265 has 37 MA's), (16, 25361), (20, 25451), (29, 25538), (37, 25592),

Gene: FrodoSwaggins\_29 Start: 25776, Stop: 26141, Start Num: 6

Candidate Starts for FrodoSwaggins\_29:

(Start: 6 @25776 has 37 MA's), (16, 25872), (20, 25962), (29, 26049),

Gene: FromIndy\_28 Start: 24151, Stop: 24528, Start Num: 6

Candidate Starts for FromIndy\_28:

(Start: 6 @24151 has 37 MA's), (8, 24169), (Start: 12 @24211 has 1 MA's), (15, 24235), (19, 24307), (21, 24343), (29, 24424), (41, 24514),

Gene: GirlPower\_28 Start: 26747, Stop: 27109, Start Num: 6

Candidate Starts for GirlPower\_28:

(Start: 6 @26747 has 37 MA's), (16, 26843), (29, 27020), (37, 27074),

Gene: GoblinVoyage\_25 Start: 22302, Stop: 22691, Start Num: 6

Candidate Starts for GoblinVoyage\_25:

(Start: 6 @22302 has 37 MA's), (Start: 11 @22356 has 2 MA's), (15, 22383), (16, 22395), (21, 22491), (25, 22533), (35, 22617), (38, 22635),

Gene: Hoshi\_29 Start: 25259, Stop: 25618, Start Num: 6

Candidate Starts for Hoshi\_29:

(Start: 6 @25259 has 37 MA's), (16, 25355), (20, 25445), (29, 25532), (37, 25586),

Gene: HotFries\_24 Start: 22355, Stop: 22690, Start Num: 11

Candidate Starts for HotFries\_24:

(Start: 6 @22301 has 37 MA's), (Start: 11 @22355 has 2 MA's), (16, 22394), (35, 22616), (38, 22634),

Gene: IceWarrior\_29 Start: 25259, Stop: 25618, Start Num: 6

Candidate Starts for IceWarrior\_29:

(Start: 6 @25259 has 37 MA's), (16, 25355), (20, 25445), (29, 25532), (37, 25586),

Gene: Indigenous\_29 Start: 25259, Stop: 25618, Start Num: 6

Candidate Starts for Indigenous\_29:

(Start: 6 @25259 has 37 MA's), (16, 25355), (20, 25445), (29, 25532), (37, 25586),

Gene: Jaylociraptor\_29 Start: 25259, Stop: 25618, Start Num: 6

Candidate Starts for Jaylociraptor\_29:

(Start: 6 @25259 has 37 MA's), (16, 25355), (20, 25445), (29, 25532), (37, 25586),

Gene: Kardashian\_28 Start: 25209, Stop: 25595, Start Num: 6

Candidate Starts for Kardashian\_28:

(1, 24987), (2, 25092), (Start: 6 @25209 has 37 MA's), (8, 25227), (13, 25272), (18, 25362), (22, 25404), (23, 25407), (28, 25476), (36, 25536),

Gene: LibertyBell\_27 Start: 24107, Stop: 24475, Start Num: 6

Candidate Starts for LibertyBell\_27:

(Start: 6 @24107 has 37 MA's), (14, 24188), (17, 24242), (21, 24299), (33, 24401), (34, 24404), (36, 24434),

Gene: Madamoto\_29 Start: 25237, Stop: 25596, Start Num: 6

Candidate Starts for Madamoto\_29:

(Start: 6 @25237 has 37 MA's), (16, 25333), (20, 25423), (24, 25468), (29, 25510), (37, 25564), (39, 25573),

Gene: Maya\_29 Start: 25273, Stop: 25632, Start Num: 6

Candidate Starts for Maya\_29:

(Start: 6 @25273 has 37 MA's), (16, 25369), (20, 25459), (29, 25546), (37, 25600),

Gene: Meibysrarus\_29 Start: 25259, Stop: 25618, Start Num: 6

Candidate Starts for Meibysrarus\_29:

(Start: 6 @25259 has 37 MA's), (16, 25355), (20, 25445), (29, 25532), (37, 25586),

Gene: Miek\_27 Start: 24163, Stop: 24540, Start Num: 6

Candidate Starts for Miek\_27:

(Start: 6 @24163 has 37 MA's), (8, 24181), (Start: 12 @24223 has 1 MA's), (15, 24247), (19, 24319), (21, 24355), (29, 24436), (41, 24526),

Gene: Moozy\_25 Start: 22318, Stop: 22707, Start Num: 6

Candidate Starts for Moozy\_25:

(Start: 6 @22318 has 37 MA's), (Start: 11 @22372 has 2 MA's), (16, 22411), (35, 22633), (38, 22651),

Gene: Namo\_29 Start: 25265, Stop: 25624, Start Num: 6

Candidate Starts for Namo\_29:

(Start: 6 @25265 has 37 MA's), (16, 25361), (20, 25451), (29, 25538), (37, 25592),

Gene: OlympicHelado\_29 Start: 25265, Stop: 25624, Start Num: 6

Candidate Starts for OlympicHelado\_29:

(Start: 6 @25265 has 37 MA's), (16, 25361), (20, 25451), (29, 25538), (37, 25592),

Gene: PherryCruz\_24 Start: 22357, Stop: 22692, Start Num: 11

Candidate Starts for PherryCruz\_24:

(Start: 6 @22303 has 37 MA's), (Start: 11 @22357 has 2 MA's), (15, 22384), (16, 22396), (35, 22618), (38, 22636),

Gene: Popy\_29 Start: 25776, Stop: 26141, Start Num: 6

Candidate Starts for Popy\_29:

(Start: 6 @25776 has 37 MA's), (16, 25872), (20, 25962), (29, 26049),

Gene: Rainydai\_27 Start: 24223, Stop: 24540, Start Num: 12

Candidate Starts for Rainydai\_27:

(Start: 6 @24163 has 37 MA's), (8, 24181), (Start: 12 @24223 has 1 MA's), (15, 24247), (19, 24319), (21, 24355), (29, 24436),

Gene: RavenPuff\_24 Start: 22303, Stop: 22692, Start Num: 6  
Candidate Starts for RavenPuff\_24:  
(Start: 6 @22303 has 37 MA's), (Start: 11 @22357 has 2 MA's), (15, 22384), (16, 22396), (35, 22618),  
(38, 22636),

Gene: Regigigas\_28 Start: 24163, Stop: 24540, Start Num: 6  
Candidate Starts for Regigigas\_28:  
(Start: 6 @24163 has 37 MA's), (8, 24181), (Start: 12 @24223 has 1 MA's), (15, 24247), (19, 24319),  
(21, 24355), (29, 24436),

Gene: Rima\_29 Start: 25265, Stop: 25624, Start Num: 6  
Candidate Starts for Rima\_29:  
(Start: 6 @25265 has 37 MA's), (16, 25361), (20, 25451), (29, 25538), (37, 25592),

Gene: RosaAsantewaa\_25 Start: 22174, Stop: 22560, Start Num: 6  
Candidate Starts for RosaAsantewaa\_25:  
(3, 22111), (4, 22126), (Start: 6 @22174 has 37 MA's), (10, 22210), (21, 22363), (27, 22429), (30,  
22447), (40, 22519),

Gene: Scap1\_25 Start: 22251, Stop: 22640, Start Num: 6  
Candidate Starts for Scap1\_25:  
(5, 22242), (Start: 6 @22251 has 37 MA's), (15, 22332), (17, 22383), (18, 22401), (35, 22566), (38,  
22584), (40, 22596),

Gene: SendItCS\_26 Start: 24163, Stop: 24540, Start Num: 6  
Candidate Starts for SendItCS\_26:  
(Start: 6 @24163 has 37 MA's), (8, 24181), (Start: 12 @24223 has 1 MA's), (15, 24247), (19, 24319),  
(21, 24355), (29, 24436), (41, 24526),

Gene: SheRa\_25 Start: 22302, Stop: 22691, Start Num: 6  
Candidate Starts for SheRa\_25:  
(Start: 6 @22302 has 37 MA's), (Start: 11 @22356 has 2 MA's), (16, 22395), (35, 22617), (38, 22635),

Gene: Soshi\_29 Start: 25782, Stop: 26147, Start Num: 6  
Candidate Starts for Soshi\_29:  
(Start: 6 @25782 has 37 MA's), (16, 25878), (20, 25968), (29, 26055),

Gene: Spectropatronm\_29 Start: 25259, Stop: 25618, Start Num: 6  
Candidate Starts for Spectropatronm\_29:  
(Start: 6 @25259 has 37 MA's), (16, 25355), (20, 25445), (29, 25532), (37, 25586),

Gene: TaidaOne\_29 Start: 25907, Stop: 26266, Start Num: 6  
Candidate Starts for TaidaOne\_29:  
(Start: 6 @25907 has 37 MA's), (16, 26003), (20, 26093), (29, 26180), (37, 26234),

Gene: Thiqqums\_27 Start: 24163, Stop: 24540, Start Num: 6  
Candidate Starts for Thiqqums\_27:  
(Start: 6 @24163 has 37 MA's), (8, 24181), (Start: 12 @24223 has 1 MA's), (15, 24247), (19, 24319),  
(21, 24355), (29, 24436),

Gene: TieDye\_28 Start: 24951, Stop: 25310, Start Num: 6  
Candidate Starts for TieDye\_28:

(Start: 6 @24951 has 37 MA's), (16, 25047), (20, 25137), (29, 25224), (37, 25278),

Gene: TonyStarch\_29 Start: 25265, Stop: 25624, Start Num: 6

Candidate Starts for TonyStarch\_29:

(Start: 6 @25265 has 37 MA's), (16, 25361), (20, 25451), (29, 25538), (37, 25592),