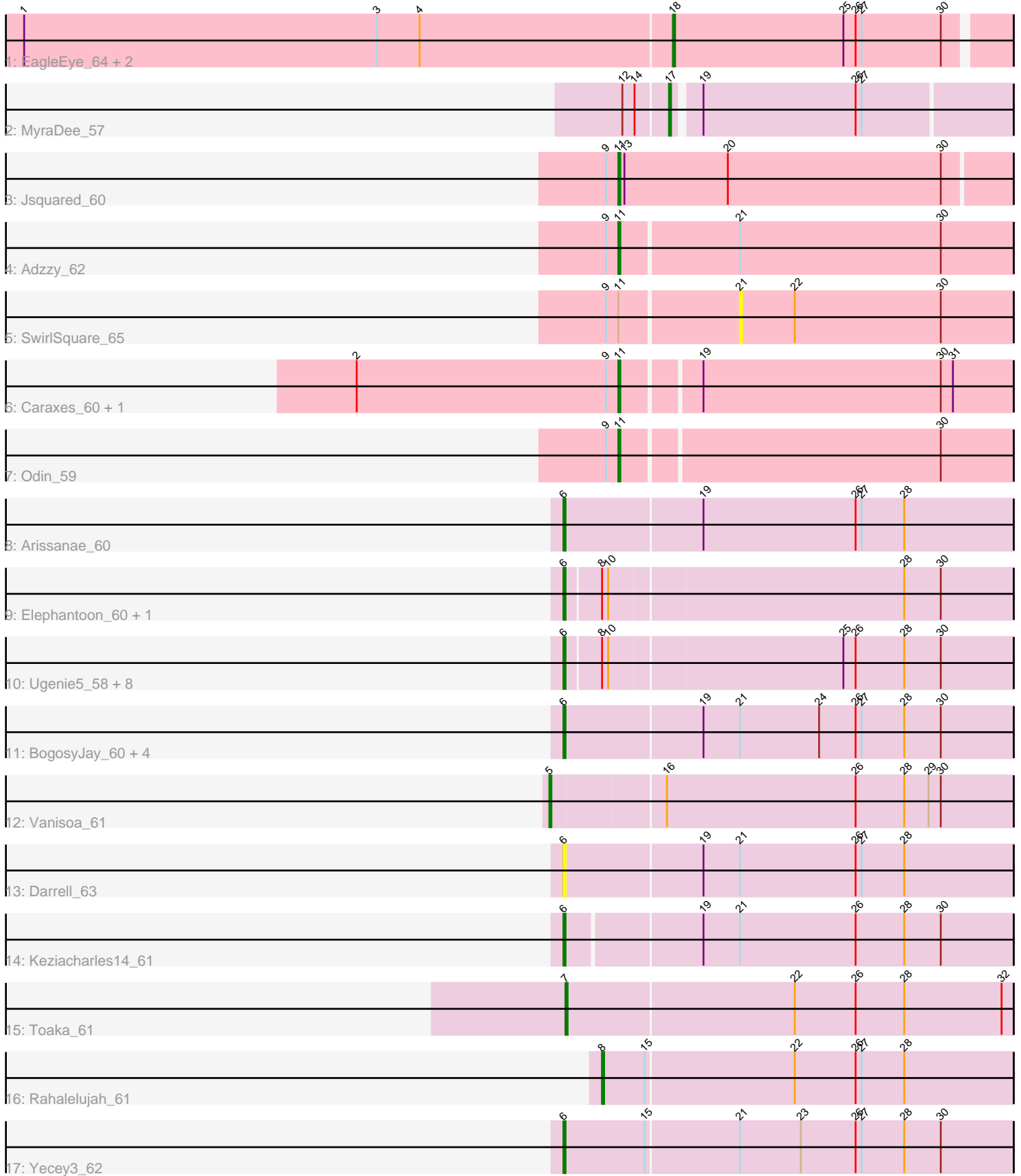


Pham 166869



Note: Tracks are now grouped by subcluster and scaled. Switching in subcluster is indicated by changes in track color. Track scale is now set by default to display the region 30 bp upstream of start 1 to 30 bp downstream of the last possible start. If this default region is judged to be packed too tightly with annotated starts, the track will be further scaled to only show that region of the ORF with annotated starts. This action will be indicated by adding "Zoomed" to the title. For starts, yellow indicates the location of called starts comprised solely of Glimmer/GeneMark auto-annotations, green indicates the location of called starts with at least 1 manual gene annotation.

Pham 166869 Report

This analysis was run 07/09/24 on database version 566.

Pham number 166869 has 33 members, 3 are drafts.

Phages represented in each track:

- Track 1 : EagleEye_64, Lucyedi_63, PainterBoy_63
- Track 2 : MyraDee_57
- Track 3 : Jsquared_60
- Track 4 : Adzzy_62
- Track 5 : SwirlSquare_65
- Track 6 : Caraxes_60, Superchunk_59
- Track 7 : Odin_59
- Track 8 : Arissanae_60
- Track 9 : Elephantoon_60, LoneWolf_62
- Track 10 : Ugenie5_58, HortumSL17_62, Scherzo_62, Aliter_62, Phonnegut_62, Pioneer_62, Myxus_61, Catalina_63, Beemo_62
- Track 11 : BogosyJay_60, Tubs_61, Maminiaina_60, Phaeder_61, PackMan_60
- Track 12 : Vanisoa_61
- Track 13 : Darrell_63
- Track 14 : Keziacharles14_61
- Track 15 : Toaka_61
- Track 16 : Rahalelujah_61
- Track 17 : Yecey3_62

Summary of Final Annotations (See graph section above for start numbers):

The start number called the most often in the published annotations is 6, it was called in 19 of the 30 non-draft genes in the pham.

Genes that call this "Most Annotated" start:

- Aliter_62, Arissanae_60, Beemo_62, BogosyJay_60, Catalina_63, Darrell_63, Elephantoon_60, HortumSL17_62, Keziacharles14_61, LoneWolf_62, Maminiaina_60, Myxus_61, PackMan_60, Phaeder_61, Phonnegut_62, Pioneer_62, Scherzo_62, Tubs_61, Ugenie5_58, Yecey3_62,

Genes that have the "Most Annotated" start but do not call it:

-

Genes that do not have the "Most Annotated" start:

- Adzzy_62, Caraxes_60, EagleEye_64, Jsquared_60, Lucyedi_63, MyraDee_57, Odin_59, PainterBoy_63, Rahalelujah_61, Superchunk_59, SwirlSquare_65, Toaka_61, Vanisoa_61,

Summary by start number:

Start 5:

- Found in 1 of 33 (3.0%) of genes in pham
- Manual Annotations of this start: 1 of 30
- Called 100.0% of time when present
- Phage (with cluster) where this start called: Vanisoa_61 (A9),

Start 6:

- Found in 20 of 33 (60.6%) of genes in pham
- Manual Annotations of this start: 19 of 30
- Called 100.0% of time when present
- Phage (with cluster) where this start called: Aliter_62 (A9), Arissanæ_60 (A9), Beemo_62 (A9), BogosyJay_60 (A9), Catalina_63 (A9), Darrell_63 (A9), Elephantoon_60 (A9), HortumSL17_62 (A9), Keziacharles14_61 (A9), LoneWolf_62 (A9), Maminiaina_60 (A9), Myxus_61 (A9), PackMan_60 (A9), Phaeder_61 (A9), Phonnegut_62 (A9), Pioneer_62 (A9), Scherzo_62 (A9), Tubs_61 (A9), Ugenie5_58 (A9), Yecey3_62 (A9),

Start 7:

- Found in 1 of 33 (3.0%) of genes in pham
- Manual Annotations of this start: 1 of 30
- Called 100.0% of time when present
- Phage (with cluster) where this start called: Toaka_61 (A9),

Start 8:

- Found in 12 of 33 (36.4%) of genes in pham
- Manual Annotations of this start: 1 of 30
- Called 8.3% of time when present
- Phage (with cluster) where this start called: Rahalelujah_61 (A9),

Start 11:

- Found in 6 of 33 (18.2%) of genes in pham
- Manual Annotations of this start: 4 of 30
- Called 83.3% of time when present
- Phage (with cluster) where this start called: Adzzy_62 (A2), Caraxes_60 (A2), Jsquared_60 (A2), Odin_59 (A2), Superchunk_59 (A2),

Start 17:

- Found in 1 of 33 (3.0%) of genes in pham
- Manual Annotations of this start: 1 of 30
- Called 100.0% of time when present
- Phage (with cluster) where this start called: MyraDee_57 (A18),

Start 18:

- Found in 3 of 33 (9.1%) of genes in pham
- Manual Annotations of this start: 3 of 30
- Called 100.0% of time when present

- Phage (with cluster) where this start called: EagleEye_64 (A16), Lucyedi_63 (A16), PainterBoy_63 (A16),

Start 21:

- Found in 10 of 33 (30.3%) of genes in pham
- No Manual Annotations of this start.
- Called 10.0% of time when present
- Phage (with cluster) where this start called: SwirlSquare_65 (A2),

Summary by clusters:

There are 4 clusters represented in this pham: A9, A2, A16, A18,

Info for manual annotations of cluster A16:

- Start number 18 was manually annotated 3 times for cluster A16.

Info for manual annotations of cluster A18:

- Start number 17 was manually annotated 1 time for cluster A18.

Info for manual annotations of cluster A2:

- Start number 11 was manually annotated 4 times for cluster A2.

Info for manual annotations of cluster A9:

- Start number 5 was manually annotated 1 time for cluster A9.
- Start number 6 was manually annotated 19 times for cluster A9.
- Start number 7 was manually annotated 1 time for cluster A9.
- Start number 8 was manually annotated 1 time for cluster A9.

Gene Information:

Gene: Adzzy_62 Start: 38280, Stop: 38089, Start Num: 11

Candidate Starts for Adzzy_62:

(9, 38286), (Start: 11 @38280 has 4 MA's), (21, 38223), (30, 38124),

Gene: Aliter_62 Start: 39332, Stop: 39120, Start Num: 6

Candidate Starts for Aliter_62:

(Start: 6 @39332 has 19 MA's), (Start: 8 @39317 has 1 MA's), (10, 39314), (25, 39203), (26, 39197), (28, 39173), (30, 39155),

Gene: Arissanae_60 Start: 39898, Stop: 39680, Start Num: 6

Candidate Starts for Arissanae_60:

(Start: 6 @39898 has 19 MA's), (19, 39832), (26, 39757), (27, 39754), (28, 39733),

Gene: Beemo_62 Start: 39502, Stop: 39290, Start Num: 6

Candidate Starts for Beemo_62:

(Start: 6 @39502 has 19 MA's), (Start: 8 @39487 has 1 MA's), (10, 39484), (25, 39373), (26, 39367), (28, 39343), (30, 39325),

Gene: BogosyJay_60 Start: 39299, Stop: 39081, Start Num: 6

Candidate Starts for BogosyJay_60:

(Start: 6 @39299 has 19 MA's), (19, 39233), (21, 39215), (24, 39176), (26, 39158), (27, 39155), (28, 39134), (30, 39116),

Gene: Caraxes_60 Start: 37974, Stop: 37786, Start Num: 11

Candidate Starts for Caraxes_60:

(2, 38103), (9, 37980), (Start: 11 @37974 has 4 MA's), (19, 37938), (30, 37821), (31, 37815),

Gene: Catalina_63 Start: 39405, Stop: 39193, Start Num: 6

Candidate Starts for Catalina_63:

(Start: 6 @39405 has 19 MA's), (Start: 8 @39390 has 1 MA's), (10, 39387), (25, 39276), (26, 39270), (28, 39246), (30, 39228),

Gene: Darrell_63 Start: 39973, Stop: 39755, Start Num: 6

Candidate Starts for Darrell_63:

(Start: 6 @39973 has 19 MA's), (19, 39907), (21, 39889), (26, 39832), (27, 39829), (28, 39808),

Gene: EagleEye_64 Start: 39391, Stop: 39230, Start Num: 18

Candidate Starts for EagleEye_64:

(1, 39709), (3, 39535), (4, 39514), (Start: 18 @39391 has 3 MA's), (25, 39307), (26, 39301), (27, 39298), (30, 39259),

Gene: Elephantoon_60 Start: 38712, Stop: 38500, Start Num: 6

Candidate Starts for Elephantoon_60:

(Start: 6 @38712 has 19 MA's), (Start: 8 @38697 has 1 MA's), (10, 38694), (28, 38553), (30, 38535),

Gene: HortumSL17_62 Start: 39404, Stop: 39192, Start Num: 6

Candidate Starts for HortumSL17_62:

(Start: 6 @39404 has 19 MA's), (Start: 8 @39389 has 1 MA's), (10, 39386), (25, 39275), (26, 39269), (28, 39245), (30, 39227),

Gene: Jsquared_60 Start: 38644, Stop: 38453, Start Num: 11

Candidate Starts for Jsquared_60:

(9, 38650), (Start: 11 @38644 has 4 MA's), (13, 38641), (20, 38590), (30, 38485),

Gene: Keziacharles14_61 Start: 40467, Stop: 40252, Start Num: 6

Candidate Starts for Keziacharles14_61:

(Start: 6 @40467 has 19 MA's), (19, 40404), (21, 40386), (26, 40329), (28, 40305), (30, 40287),

Gene: LoneWolf_62 Start: 39434, Stop: 39222, Start Num: 6

Candidate Starts for LoneWolf_62:

(Start: 6 @39434 has 19 MA's), (Start: 8 @39419 has 1 MA's), (10, 39416), (28, 39275), (30, 39257),

Gene: Lucyedi_63 Start: 39587, Stop: 39426, Start Num: 18

Candidate Starts for Lucyedi_63:

(1, 39905), (3, 39731), (4, 39710), (Start: 18 @39587 has 3 MA's), (25, 39503), (26, 39497), (27, 39494), (30, 39455),

Gene: Maminiaina_60 Start: 39281, Stop: 39063, Start Num: 6

Candidate Starts for Maminiaina_60:

(Start: 6 @39281 has 19 MA's), (19, 39215), (21, 39197), (24, 39158), (26, 39140), (27, 39137), (28, 39116), (30, 39098),

Gene: MyraDee_57 Start: 36199, Stop: 36038, Start Num: 17

Candidate Starts for MyraDee_57:

(12, 36220), (14, 36214), (Start: 17 @36199 has 1 MA's), (19, 36187), (26, 36112), (27, 36109),

Gene: Myxus_61 Start: 39404, Stop: 39192, Start Num: 6

Candidate Starts for Myxus_61:

(Start: 6 @39404 has 19 MA's), (Start: 8 @39389 has 1 MA's), (10, 39386), (25, 39275), (26, 39269), (28, 39245), (30, 39227),

Gene: Odin_59 Start: 38358, Stop: 38170, Start Num: 11

Candidate Starts for Odin_59:

(9, 38364), (Start: 11 @38358 has 4 MA's), (30, 38205),

Gene: PackMan_60 Start: 39279, Stop: 39061, Start Num: 6

Candidate Starts for PackMan_60:

(Start: 6 @39279 has 19 MA's), (19, 39213), (21, 39195), (24, 39156), (26, 39138), (27, 39135), (28, 39114), (30, 39096),

Gene: PainterBoy_63 Start: 39546, Stop: 39385, Start Num: 18

Candidate Starts for PainterBoy_63:

(1, 39864), (3, 39690), (4, 39669), (Start: 18 @39546 has 3 MA's), (25, 39462), (26, 39456), (27, 39453), (30, 39414),

Gene: Phaeder_61 Start: 39279, Stop: 39061, Start Num: 6

Candidate Starts for Phaeder_61:

(Start: 6 @39279 has 19 MA's), (19, 39213), (21, 39195), (24, 39156), (26, 39138), (27, 39135), (28, 39114), (30, 39096),

Gene: Phonnegut_62 Start: 39501, Stop: 39289, Start Num: 6

Candidate Starts for Phonnegut_62:

(Start: 6 @39501 has 19 MA's), (Start: 8 @39486 has 1 MA's), (10, 39483), (25, 39372), (26, 39366), (28, 39342), (30, 39324),

Gene: Pioneer_62 Start: 39501, Stop: 39289, Start Num: 6

Candidate Starts for Pioneer_62:

(Start: 6 @39501 has 19 MA's), (Start: 8 @39486 has 1 MA's), (10, 39483), (25, 39372), (26, 39366), (28, 39342), (30, 39324),

Gene: Rahalelujah_61 Start: 39034, Stop: 38834, Start Num: 8

Candidate Starts for Rahalelujah_61:

(Start: 8 @39034 has 1 MA's), (15, 39013), (22, 38941), (26, 38911), (27, 38908), (28, 38887),

Gene: Scherzo_62 Start: 39690, Stop: 39478, Start Num: 6

Candidate Starts for Scherzo_62:

(Start: 6 @39690 has 19 MA's), (Start: 8 @39675 has 1 MA's), (10, 39672), (25, 39561), (26, 39555), (28, 39531), (30, 39513),

Gene: Superchunk_59 Start: 37974, Stop: 37786, Start Num: 11

Candidate Starts for Superchunk_59:

(2, 38103), (9, 37980), (Start: 11 @37974 has 4 MA's), (19, 37938), (30, 37821), (31, 37815),

Gene: SwirlSquare_65 Start: 38842, Stop: 38708, Start Num: 21

Candidate Starts for SwirlSquare_65:

(9, 38905), (Start: 11 @38899 has 4 MA's), (21, 38842), (22, 38815), (30, 38743),

Gene: Toaka_61 Start: 39301, Stop: 39083, Start Num: 7

Candidate Starts for Toaka_61:

(Start: 7 @39301 has 1 MA's), (22, 39190), (26, 39160), (28, 39136), (32, 39088),

Gene: Tubs_61 Start: 39279, Stop: 39061, Start Num: 6

Candidate Starts for Tubs_61:

(Start: 6 @39279 has 19 MA's), (19, 39213), (21, 39195), (24, 39156), (26, 39138), (27, 39135), (28, 39114), (30, 39096),

Gene: Ugenie5_58 Start: 39689, Stop: 39477, Start Num: 6

Candidate Starts for Ugenie5_58:

(Start: 6 @39689 has 19 MA's), (Start: 8 @39674 has 1 MA's), (10, 39671), (25, 39560), (26, 39554), (28, 39530), (30, 39512),

Gene: Vanisoa_61 Start: 40386, Stop: 40162, Start Num: 5

Candidate Starts for Vanisoa_61:

(Start: 5 @40386 has 1 MA's), (16, 40332), (26, 40239), (28, 40215), (29, 40203), (30, 40197),

Gene: Yecey3_62 Start: 39278, Stop: 39060, Start Num: 6

Candidate Starts for Yecey3_62:

(Start: 6 @39278 has 19 MA's), (15, 39239), (21, 39194), (23, 39164), (26, 39137), (27, 39134), (28, 39113), (30, 39095),