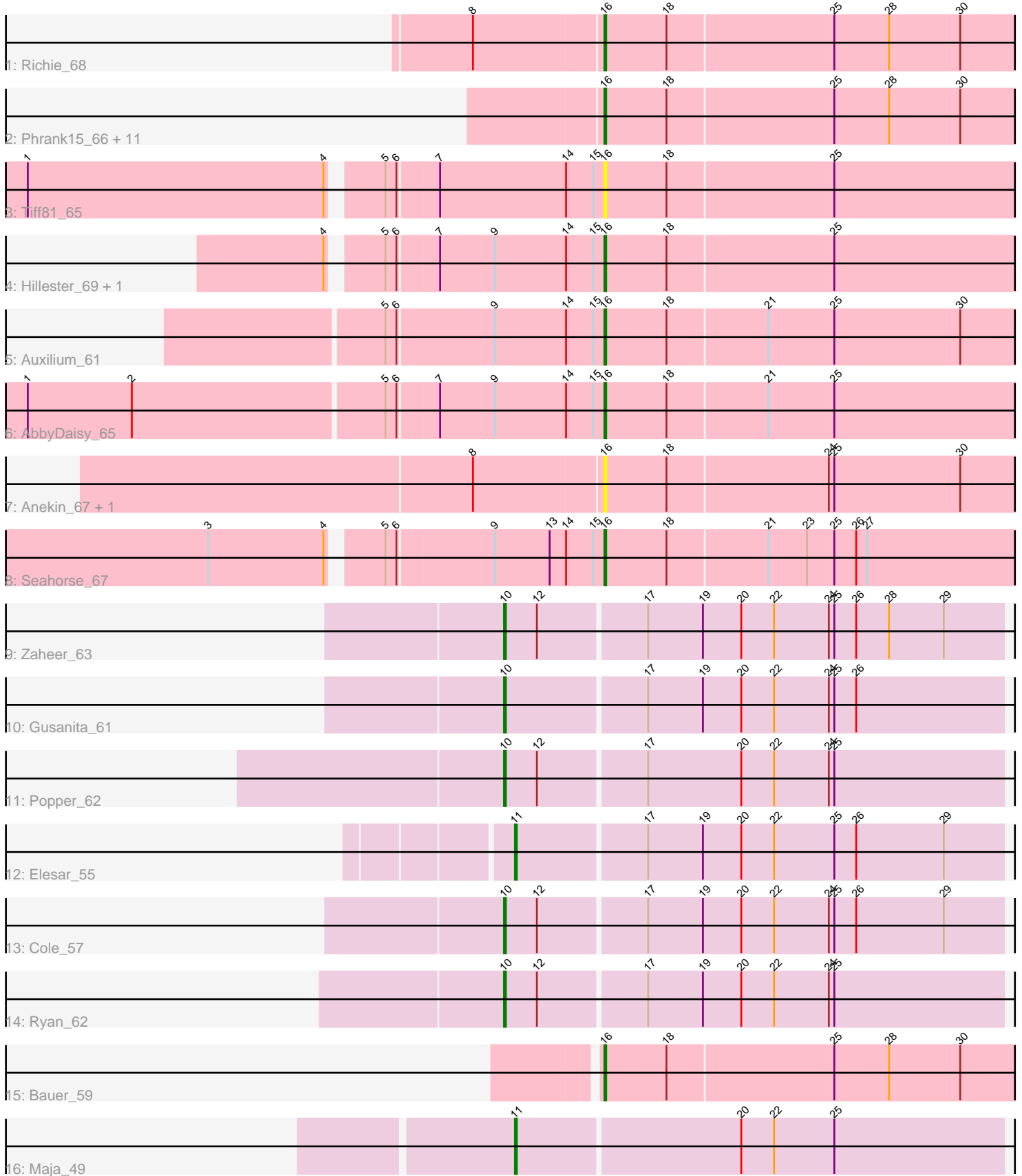


Pham 166897



Note: Tracks are now grouped by subcluster and scaled. Switching in subcluster is indicated by changes in track color. Track scale is now set by default to display the region 30 bp upstream of start 1 to 30 bp downstream of the last possible start. If this default region is judged to be packed too tightly with annotated starts, the track will be further scaled to only show that region of the ORF with annotated starts. This action will be indicated by adding "Zoomed" to the title. For starts, yellow indicates the location of called starts comprised solely of Glimmer/GeneMark auto-annotations, green indicates the location of called starts with at least 1 manual gene annotation.

## Pham 166897 Report

This analysis was run 07/09/24 on database version 566.

Pham number 166897 has 29 members, 10 are drafts.

Phages represented in each track:

- Track 1 : Richie\_68
- Track 2 : Phrank15\_66, Faja\_64, CookieBear\_64, MidnightRain\_68, Gorpy\_64, YoungHarleezy\_64, Isolde\_63, Raphaella\_63, BenchScraper\_63, Aikyam\_63, BillyTP\_66, Sakai\_63
- Track 3 : Tiff81\_65
- Track 4 : Hillester\_69, RadFad\_69
- Track 5 : Auxilium\_61
- Track 6 : AbbyDaisy\_65
- Track 7 : Anekin\_67, BlackSpider\_52
- Track 8 : Seahorse\_67
- Track 9 : Zaheer\_63
- Track 10 : Gusanita\_61
- Track 11 : Popper\_62
- Track 12 : Elesar\_55
- Track 13 : Cole\_57
- Track 14 : Ryan\_62
- Track 15 : Bauer\_59
- Track 16 : Maja\_49

### ***Summary of Final Annotations (See graph section above for start numbers):***

The start number called the most often in the published annotations is 16, it was called in 12 of the 19 non-draft genes in the pham.

Genes that call this "Most Annotated" start:

- AbbyDaisy\_65, Aikyam\_63, Anekin\_67, Auxilium\_61, Bauer\_59, BenchScraper\_63, BillyTP\_66, BlackSpider\_52, CookieBear\_64, Faja\_64, Gorpy\_64, Hillester\_69, Isolde\_63, MidnightRain\_68, Phrank15\_66, RadFad\_69, Raphaella\_63, Richie\_68, Sakai\_63, Seahorse\_67, Tiff81\_65, YoungHarleezy\_64,

Genes that have the "Most Annotated" start but do not call it:

- 

Genes that do not have the "Most Annotated" start:

- Cole\_57, Elesar\_55, Gusanita\_61, Maja\_49, Popper\_62, Ryan\_62, Zaheer\_63,

### Summary by start number:

#### Start 10:

- Found in 5 of 29 ( 17.2% ) of genes in pham
- Manual Annotations of this start: 5 of 19
- Called 100.0% of time when present
- Phage (with cluster) where this start called: Cole\_57 (FF), Gusanita\_61 (FF), Popper\_62 (FF), Ryan\_62 (FF), Zaheer\_63 (FF),

#### Start 11:

- Found in 2 of 29 ( 6.9% ) of genes in pham
- Manual Annotations of this start: 2 of 19
- Called 100.0% of time when present
- Phage (with cluster) where this start called: Elesar\_55 (FF), Maja\_49 (FO),

#### Start 16:

- Found in 22 of 29 ( 75.9% ) of genes in pham
- Manual Annotations of this start: 12 of 19
- Called 100.0% of time when present
- Phage (with cluster) where this start called: AbbyDaisy\_65 (AY), Aikyam\_63 (AY), Anekin\_67 (AY), Auxilium\_61 (AY), Bauer\_59 (FN), BenchScraper\_63 (AY), BillyTP\_66 (AY), BlackSpider\_52 (FN), CookieBear\_64 (AY), Faja\_64 (AY), Gorpy\_64 (AY), Hillester\_69 (AY), Isolde\_63 (AY), MidnightRain\_68 (AY), Phrank15\_66 (AY), RadFad\_69 (AY), Raphaella\_63 (AY), Richie\_68 (AY), Sakai\_63 (AY), Seahorse\_67 (AY), Tiff81\_65 (AY), YoungHarleezy\_64 (AY),

### Summary by clusters:

There are 4 clusters represented in this pham: AY, FN, FF, FO,

Info for manual annotations of cluster AY:

- Start number 16 was manually annotated 11 times for cluster AY.

Info for manual annotations of cluster FF:

- Start number 10 was manually annotated 5 times for cluster FF.
- Start number 11 was manually annotated 1 time for cluster FF.

Info for manual annotations of cluster FN:

- Start number 16 was manually annotated 1 time for cluster FN.

Info for manual annotations of cluster FO:

- Start number 11 was manually annotated 1 time for cluster FO.

### Gene Information:

Gene: AbbyDaisy\_65 Start: 35452, Stop: 35673, Start Num: 16

Candidate Starts for AbbyDaisy\_65:

(1, 35143), (2, 35200), (5, 35335), (6, 35341), (7, 35362), (9, 35392), (14, 35431), (15, 35446), (Start: 16 @35452 has 12 MA's), (18, 35485), (21, 35539), (25, 35575),

Gene: Aikyam\_63 Start: 33131, Stop: 33355, Start Num: 16

Candidate Starts for Aikyam\_63:

(Start: 16 @33131 has 12 MA's), (18, 33164), (25, 33254), (28, 33284), (30, 33323),

Gene: Anekin\_67 Start: 35586, Stop: 35810, Start Num: 16

Candidate Starts for Anekin\_67:

(8, 35517), (Start: 16 @35586 has 12 MA's), (18, 35619), (24, 35706), (25, 35709), (30, 35778),

Gene: Auxilium\_61 Start: 32424, Stop: 32648, Start Num: 16

Candidate Starts for Auxilium\_61:

(5, 32307), (6, 32313), (9, 32364), (14, 32403), (15, 32418), (Start: 16 @32424 has 12 MA's), (18, 32457), (21, 32511), (25, 32547), (30, 32616),

Gene: Bauer\_59 Start: 33224, Stop: 33448, Start Num: 16

Candidate Starts for Bauer\_59:

(Start: 16 @33224 has 12 MA's), (18, 33257), (25, 33347), (28, 33377), (30, 33416),

Gene: BenchScraper\_63 Start: 34323, Stop: 34547, Start Num: 16

Candidate Starts for BenchScraper\_63:

(Start: 16 @34323 has 12 MA's), (18, 34356), (25, 34446), (28, 34476), (30, 34515),

Gene: BillyTP\_66 Start: 36178, Stop: 36402, Start Num: 16

Candidate Starts for BillyTP\_66:

(Start: 16 @36178 has 12 MA's), (18, 36211), (25, 36301), (28, 36331), (30, 36370),

Gene: BlackSpider\_52 Start: 31839, Stop: 32063, Start Num: 16

Candidate Starts for BlackSpider\_52:

(8, 31770), (Start: 16 @31839 has 12 MA's), (18, 31872), (24, 31959), (25, 31962), (30, 32031),

Gene: Cole\_57 Start: 37556, Stop: 37825, Start Num: 10

Candidate Starts for Cole\_57:

(Start: 10 @37556 has 5 MA's), (12, 37574), (17, 37631), (19, 37661), (20, 37682), (22, 37700), (24, 37730), (25, 37733), (26, 37745), (29, 37793),

Gene: CookieBear\_64 Start: 34562, Stop: 34786, Start Num: 16

Candidate Starts for CookieBear\_64:

(Start: 16 @34562 has 12 MA's), (18, 34595), (25, 34685), (28, 34715), (30, 34754),

Gene: Elesar\_55 Start: 38817, Stop: 39080, Start Num: 11

Candidate Starts for Elesar\_55:

(Start: 11 @38817 has 2 MA's), (17, 38886), (19, 38916), (20, 38937), (22, 38955), (25, 38988), (26, 39000), (29, 39048),

Gene: Faja\_64 Start: 35937, Stop: 36161, Start Num: 16

Candidate Starts for Faja\_64:

(Start: 16 @35937 has 12 MA's), (18, 35970), (25, 36060), (28, 36090), (30, 36129),

Gene: Gorpy\_64 Start: 35554, Stop: 35778, Start Num: 16

Candidate Starts for Gorpy\_64:

(Start: 16 @35554 has 12 MA's), (18, 35587), (25, 35677), (28, 35707), (30, 35746),

Gene: Gusanita\_61 Start: 38513, Stop: 38782, Start Num: 10

Candidate Starts for Gusanita\_61:

(Start: 10 @38513 has 5 MA's), (17, 38588), (19, 38618), (20, 38639), (22, 38657), (24, 38687), (25, 38690), (26, 38702),

Gene: Hillester\_69 Start: 36029, Stop: 36250, Start Num: 16

Candidate Starts for Hillester\_69:

(4, 35888), (5, 35912), (6, 35918), (7, 35939), (9, 35969), (14, 36008), (15, 36023), (Start: 16 @36029 has 12 MA's), (18, 36062), (25, 36152),

Gene: Isolde\_63 Start: 34231, Stop: 34455, Start Num: 16

Candidate Starts for Isolde\_63:

(Start: 16 @34231 has 12 MA's), (18, 34264), (25, 34354), (28, 34384), (30, 34423),

Gene: Maja\_49 Start: 33108, Stop: 33371, Start Num: 11

Candidate Starts for Maja\_49:

(Start: 11 @33108 has 2 MA's), (20, 33228), (22, 33246), (25, 33279),

Gene: MidnightRain\_68 Start: 36072, Stop: 36296, Start Num: 16

Candidate Starts for MidnightRain\_68:

(Start: 16 @36072 has 12 MA's), (18, 36105), (25, 36195), (28, 36225), (30, 36264),

Gene: Phrank15\_66 Start: 34854, Stop: 35078, Start Num: 16

Candidate Starts for Phrank15\_66:

(Start: 16 @34854 has 12 MA's), (18, 34887), (25, 34977), (28, 35007), (30, 35046),

Gene: Popper\_62 Start: 37772, Stop: 38041, Start Num: 10

Candidate Starts for Popper\_62:

(Start: 10 @37772 has 5 MA's), (12, 37790), (17, 37847), (20, 37898), (22, 37916), (24, 37946), (25, 37949),

Gene: RadFad\_69 Start: 36029, Stop: 36250, Start Num: 16

Candidate Starts for RadFad\_69:

(4, 35888), (5, 35912), (6, 35918), (7, 35939), (9, 35969), (14, 36008), (15, 36023), (Start: 16 @36029 has 12 MA's), (18, 36062), (25, 36152),

Gene: Raphaella\_63 Start: 34421, Stop: 34645, Start Num: 16

Candidate Starts for Raphaella\_63:

(Start: 16 @34421 has 12 MA's), (18, 34454), (25, 34544), (28, 34574), (30, 34613),

Gene: Richie\_68 Start: 36226, Stop: 36450, Start Num: 16

Candidate Starts for Richie\_68:

(8, 36157), (Start: 16 @36226 has 12 MA's), (18, 36259), (25, 36349), (28, 36379), (30, 36418),

Gene: Ryan\_62 Start: 38945, Stop: 39214, Start Num: 10

Candidate Starts for Ryan\_62:

(Start: 10 @38945 has 5 MA's), (12, 38963), (17, 39020), (19, 39050), (20, 39071), (22, 39089), (24, 39119), (25, 39122),

Gene: Sakai\_63 Start: 34265, Stop: 34489, Start Num: 16

Candidate Starts for Sakai\_63:

(Start: 16 @34265 has 12 MA's), (18, 34298), (25, 34388), (28, 34418), (30, 34457),

Gene: Seahorse\_67 Start: 36536, Stop: 36757, Start Num: 16

Candidate Starts for Seahorse\_67:

(3, 36332), (4, 36395), (5, 36419), (6, 36425), (9, 36476), (13, 36506), (14, 36515), (15, 36530), (Start: 16 @36536 has 12 MA's), (18, 36569), (21, 36623), (23, 36644), (25, 36659), (26, 36671), (27, 36677),

Gene: Tiff81\_65 Start: 32949, Stop: 33170, Start Num: 16

Candidate Starts for Tiff81\_65:

(1, 32646), (4, 32808), (5, 32832), (6, 32838), (7, 32859), (14, 32928), (15, 32943), (Start: 16 @32949 has 12 MA's), (18, 32982), (25, 33072),

Gene: YoungHarleezy\_64 Start: 34960, Stop: 35184, Start Num: 16

Candidate Starts for YoungHarleezy\_64:

(Start: 16 @34960 has 12 MA's), (18, 34993), (25, 35083), (28, 35113), (30, 35152),

Gene: Zaheer\_63 Start: 39067, Stop: 39336, Start Num: 10

Candidate Starts for Zaheer\_63:

(Start: 10 @39067 has 5 MA's), (12, 39085), (17, 39142), (19, 39172), (20, 39193), (22, 39211), (24, 39241), (25, 39244), (26, 39256), (28, 39274), (29, 39304),