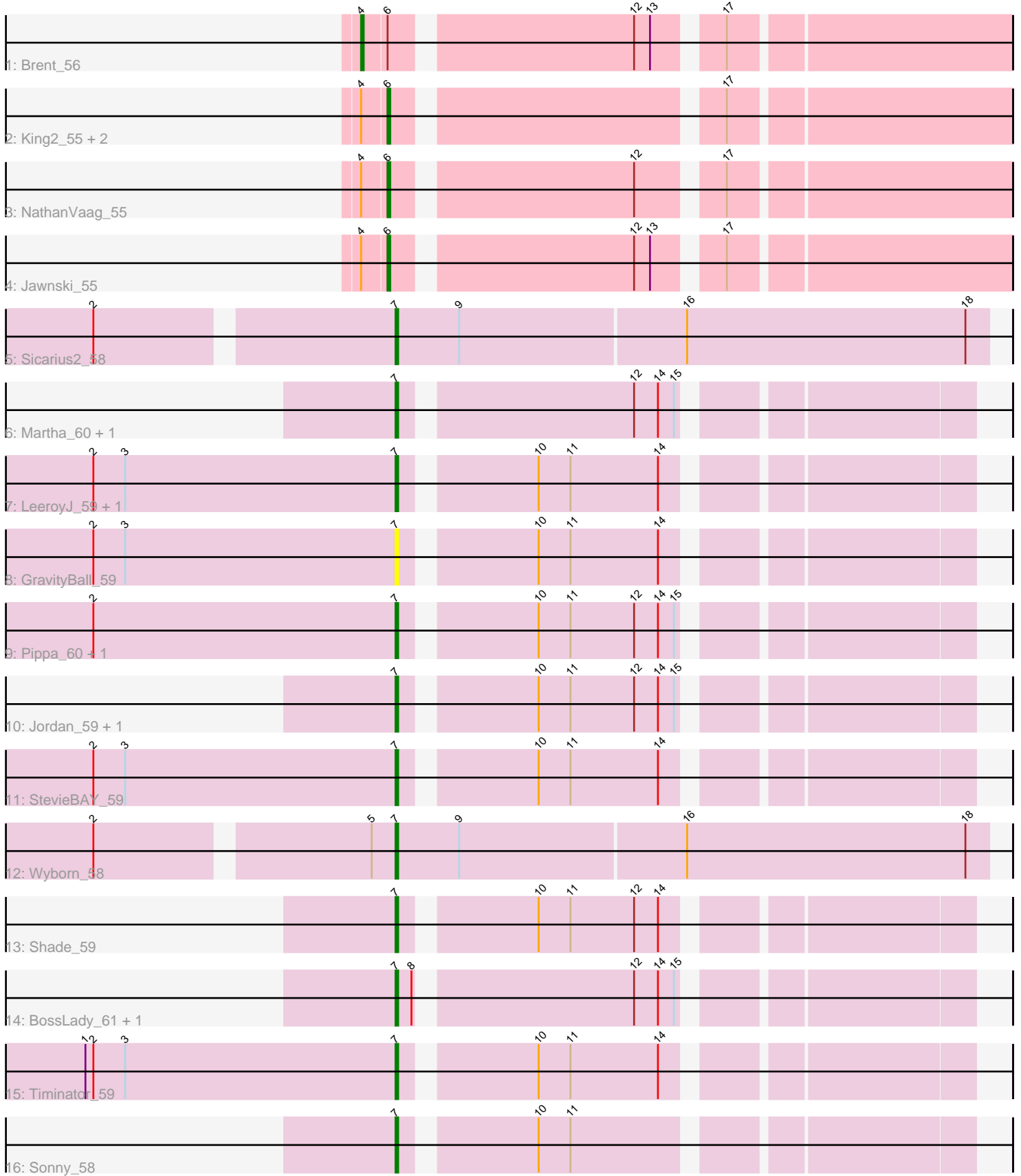


Pham 166955



Note: Tracks are now grouped by subcluster and scaled. Switching in subcluster is indicated by changes in track color. Track scale is now set by default to display the region 30 bp upstream of start 1 to 30 bp downstream of the last possible start. If this default region is judged to be packed too tightly with annotated starts, the track will be further scaled to only show that region of the ORF with annotated starts. This action will be indicated by adding "Zoomed" to the title. For starts, yellow indicates the location of called starts comprised solely of Glimmer/GeneMark auto-annotations, green indicates the location of called starts with at least 1 manual gene annotation.

Pham 166955 Report

This analysis was run 07/09/24 on database version 566.

Pham number 166955 has 23 members, 1 are drafts.

Phages represented in each track:

- Track 1 : Brent_56
- Track 2 : King2_55, Beans_56, Piccoletto_56
- Track 3 : NathanVaag_55
- Track 4 : Jawnski_55
- Track 5 : Sicarius2_58
- Track 6 : Martha_60, TaeYoung_61
- Track 7 : LeeroyJ_59, BarretLemon_59
- Track 8 : GravityBall_59
- Track 9 : Pippa_60, JKerns_59
- Track 10 : Jordan_59, Zartrosa_59
- Track 11 : StevieBAY_59
- Track 12 : Wyborn_58
- Track 13 : Shade_59
- Track 14 : BossLady_61, Grekaycon_60
- Track 15 : Timinator_59
- Track 16 : Sonny_58

Summary of Final Annotations (See graph section above for start numbers):

The start number called the most often in the published annotations is 7, it was called in 16 of the 22 non-draft genes in the pham.

Genes that call this "Most Annotated" start:

- BarretLemon_59, BossLady_61, GravityBall_59, Grekaycon_60, JKerns_59, Jordan_59, LeeroyJ_59, Martha_60, Pippa_60, Shade_59, Sicarius2_58, Sonny_58, StevieBAY_59, TaeYoung_61, Timinator_59, Wyborn_58, Zartrosa_59,

Genes that have the "Most Annotated" start but do not call it:

-

Genes that do not have the "Most Annotated" start:

- Beans_56, Brent_56, Jawnski_55, King2_55, NathanVaag_55, Piccoletto_56,

Summary by start number:

Start 4:

- Found in 6 of 23 (26.1%) of genes in pham
- Manual Annotations of this start: 1 of 22
- Called 16.7% of time when present
- Phage (with cluster) where this start called: Brent_56 (AO1),

Start 6:

- Found in 6 of 23 (26.1%) of genes in pham
- Manual Annotations of this start: 5 of 22
- Called 83.3% of time when present
- Phage (with cluster) where this start called: Beans_56 (AO1), Jawnski_55 (AO1), King2_55 (AO1), NathanVaag_55 (AO1), Piccoletto_56 (AO1),

Start 7:

- Found in 17 of 23 (73.9%) of genes in pham
- Manual Annotations of this start: 16 of 22
- Called 100.0% of time when present
- Phage (with cluster) where this start called: BarretLemon_59 (AO2), BossLady_61 (AO2), GravityBall_59 (AO2), Grekaycon_60 (AO2), JKerns_59 (AO2), Jordan_59 (AO2), LeeroyJ_59 (AO2), Martha_60 (AO2), Pippa_60 (AO2), Shade_59 (AO2), Sicarius2_58 (AO2), Sonny_58 (AO2), StevieBAY_59 (AO2), TaeYoung_61 (AO2), Timinator_59 (AO2), Wyborn_58 (AO2), Zartrosa_59 (AO2),

Summary by clusters:

There are 2 clusters represented in this pham: AO2, AO1,

Info for manual annotations of cluster AO1:

- Start number 4 was manually annotated 1 time for cluster AO1.
- Start number 6 was manually annotated 5 times for cluster AO1.

Info for manual annotations of cluster AO2:

- Start number 7 was manually annotated 16 times for cluster AO2.

Gene Information:

Gene: BarretLemon_59 Start: 40663, Stop: 40857, Start Num: 7

Candidate Starts for BarretLemon_59:

(2, 40549), (3, 40561), (Start: 7 @40663 has 16 MA's), (10, 40708), (11, 40720), (14, 40753),

Gene: Beans_56 Start: 40404, Stop: 40616, Start Num: 6

Candidate Starts for Beans_56:

(Start: 4 @40395 has 1 MA's), (Start: 6 @40404 has 5 MA's), (17, 40515),

Gene: BossLady_61 Start: 41043, Stop: 41237, Start Num: 7

Candidate Starts for BossLady_61:

(Start: 7 @41043 has 16 MA's), (8, 41049), (12, 41124), (14, 41133), (15, 41139),

Gene: Brent_56 Start: 40640, Stop: 40861, Start Num: 4

Candidate Starts for Brent_56:

(Start: 4 @40640 has 1 MA's), (Start: 6 @40649 has 5 MA's), (12, 40733), (13, 40739), (17, 40760),

Gene: GravityBall_59 Start: 40961, Stop: 41155, Start Num: 7

Candidate Starts for GravityBall_59:

(2, 40847), (3, 40859), (Start: 7 @40961 has 16 MA's), (10, 41006), (11, 41018), (14, 41051),

Gene: Grekaycon_60 Start: 40923, Stop: 41117, Start Num: 7

Candidate Starts for Grekaycon_60:

(Start: 7 @40923 has 16 MA's), (8, 40929), (12, 41004), (14, 41013), (15, 41019),

Gene: JKerns_59 Start: 40989, Stop: 41183, Start Num: 7

Candidate Starts for JKerns_59:

(2, 40875), (Start: 7 @40989 has 16 MA's), (10, 41034), (11, 41046), (12, 41070), (14, 41079), (15, 41085),

Gene: Jawnski_55 Start: 40174, Stop: 40386, Start Num: 6

Candidate Starts for Jawnski_55:

(Start: 4 @40165 has 1 MA's), (Start: 6 @40174 has 5 MA's), (12, 40258), (13, 40264), (17, 40285),

Gene: Jordan_59 Start: 40803, Stop: 40997, Start Num: 7

Candidate Starts for Jordan_59:

(Start: 7 @40803 has 16 MA's), (10, 40848), (11, 40860), (12, 40884), (14, 40893), (15, 40899),

Gene: King2_55 Start: 40526, Stop: 40738, Start Num: 6

Candidate Starts for King2_55:

(Start: 4 @40517 has 1 MA's), (Start: 6 @40526 has 5 MA's), (17, 40637),

Gene: LeeroyJ_59 Start: 40692, Stop: 40886, Start Num: 7

Candidate Starts for LeeroyJ_59:

(2, 40578), (3, 40590), (Start: 7 @40692 has 16 MA's), (10, 40737), (11, 40749), (14, 40782),

Gene: Martha_60 Start: 41028, Stop: 41222, Start Num: 7

Candidate Starts for Martha_60:

(Start: 7 @41028 has 16 MA's), (12, 41109), (14, 41118), (15, 41124),

Gene: NathanVaag_55 Start: 40184, Stop: 40396, Start Num: 6

Candidate Starts for NathanVaag_55:

(Start: 4 @40175 has 1 MA's), (Start: 6 @40184 has 5 MA's), (12, 40268), (17, 40295),

Gene: Piccoletto_56 Start: 40377, Stop: 40589, Start Num: 6

Candidate Starts for Piccoletto_56:

(Start: 4 @40368 has 1 MA's), (Start: 6 @40377 has 5 MA's), (17, 40488),

Gene: Pippa_60 Start: 40999, Stop: 41193, Start Num: 7

Candidate Starts for Pippa_60:

(2, 40885), (Start: 7 @40999 has 16 MA's), (10, 41044), (11, 41056), (12, 41080), (14, 41089), (15, 41095),

Gene: Shade_59 Start: 40725, Stop: 40919, Start Num: 7

Candidate Starts for Shade_59:

(Start: 7 @40725 has 16 MA's), (10, 40770), (11, 40782), (12, 40806), (14, 40815),

Gene: Sicarius2_58 Start: 38771, Stop: 38992, Start Num: 7

Candidate Starts for Sicarius2_58:

(2, 38666), (Start: 7 @38771 has 16 MA's), (9, 38795), (16, 38879), (18, 38984),

Gene: Sonny_58 Start: 40475, Stop: 40669, Start Num: 7

Candidate Starts for Sonny_58:

(Start: 7 @40475 has 16 MA's), (10, 40520), (11, 40532),

Gene: StevieBAY_59 Start: 40958, Stop: 41152, Start Num: 7

Candidate Starts for StevieBAY_59:

(2, 40844), (3, 40856), (Start: 7 @40958 has 16 MA's), (10, 41003), (11, 41015), (14, 41048),

Gene: TaeYoung_61 Start: 41001, Stop: 41195, Start Num: 7

Candidate Starts for TaeYoung_61:

(Start: 7 @41001 has 16 MA's), (12, 41082), (14, 41091), (15, 41097),

Gene: Timinator_59 Start: 40807, Stop: 41001, Start Num: 7

Candidate Starts for Timinator_59:

(1, 40690), (2, 40693), (3, 40705), (Start: 7 @40807 has 16 MA's), (10, 40852), (11, 40864), (14, 40897),

Gene: Wyborn_58 Start: 39781, Stop: 40002, Start Num: 7

Candidate Starts for Wyborn_58:

(2, 39676), (5, 39772), (Start: 7 @39781 has 16 MA's), (9, 39805), (16, 39889), (18, 39994),

Gene: Zartrosa_59 Start: 40773, Stop: 40967, Start Num: 7

Candidate Starts for Zartrosa_59:

(Start: 7 @40773 has 16 MA's), (10, 40818), (11, 40830), (12, 40854), (14, 40863), (15, 40869),