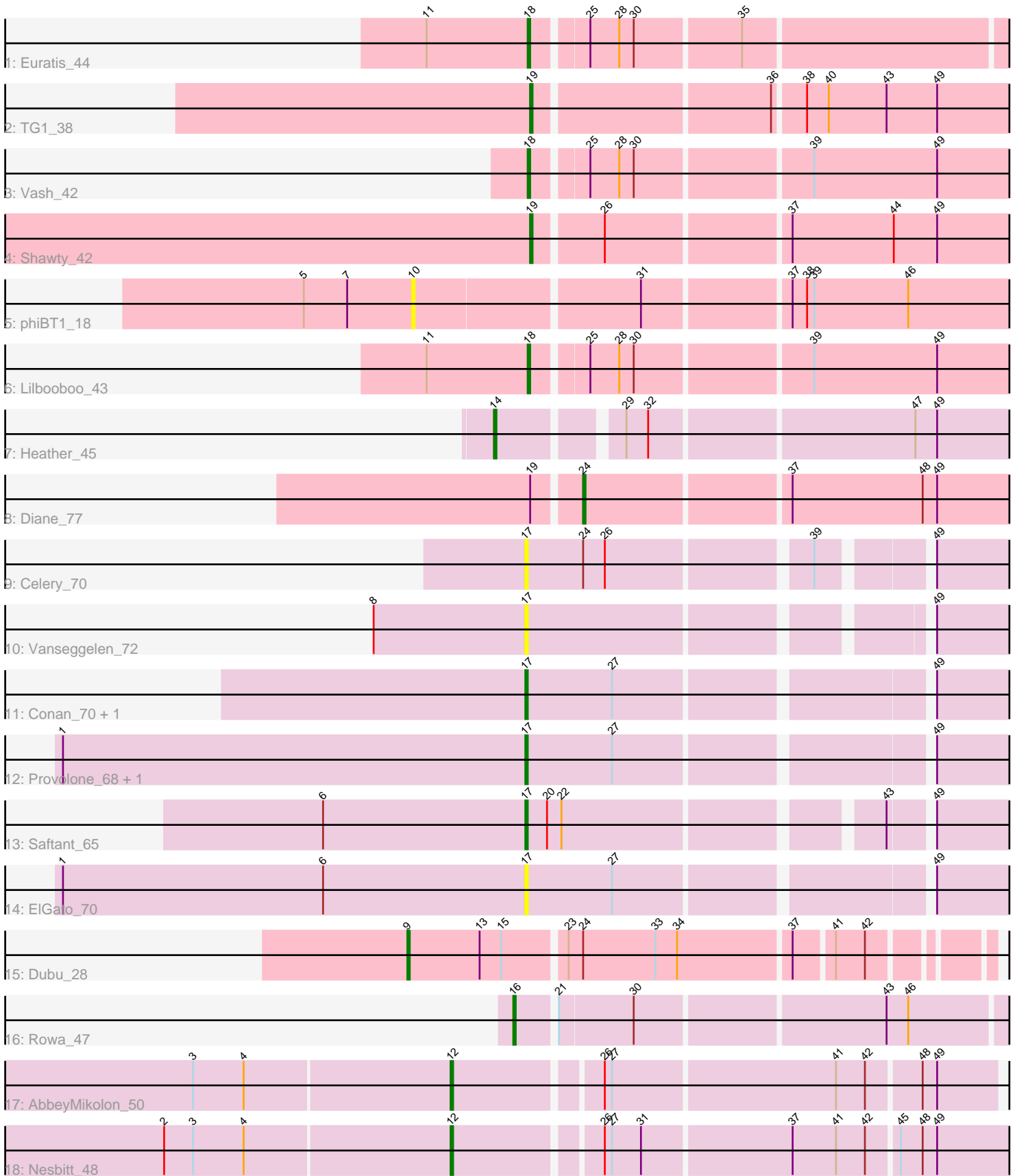


Pham 166987



Note: Tracks are now grouped by subcluster and scaled. Switching in subcluster is indicated by changes in track color. Track scale is now set by default to display the region 30 bp upstream of start 1 to 30 bp downstream of the last possible start. If this default region is judged to be packed too tightly with annotated starts, the track will be further scaled to only show that region of the ORF with annotated starts. This action will be indicated by adding "Zoomed" to the title. For starts, yellow indicates the location of called starts comprised solely of Glimmer/GeneMark auto-annotations, green indicates the location of called starts with at least 1 manual gene annotation.

Pham 166987 Report

This analysis was run 07/09/24 on database version 566.

WARNING: Pham size does not match number of genes in report. Either unphamerated genes have been added (by you) or starterator has removed genes due to invalid start codon.

Pham number 166987 has 20 members, 5 are drafts.

Phages represented in each track:

- Track 1 : Euratis_44
- Track 2 : TG1_38
- Track 3 : Vash_42
- Track 4 : Shawty_42
- Track 5 : phiBT1_18
- Track 6 : Lilbooboo_43
- Track 7 : Heather_45
- Track 8 : Diane_77
- Track 9 : Celery_70
- Track 10 : Vanseggelen_72
- Track 11 : Conan_70, Dexers_65
- Track 12 : Provolone_68, Alsaber_67
- Track 13 : Saftant_65
- Track 14 : ElGato_70
- Track 15 : Dubu_28
- Track 16 : Rowa_47
- Track 17 : AbbeyMikolon_50
- Track 18 : Nesbitt_48

Summary of Final Annotations (See graph section above for start numbers):

The start number called the most often in the published annotations is 17, it was called in 4 of the 15 non-draft genes in the pham.

Genes that call this "Most Annotated" start:

- Alsaber_67, Celery_70, Conan_70, Dexers_65, ElGato_70, Provolone_68, Saftant_65, Vanseggelen_72,

Genes that have the "Most Annotated" start but do not call it:

-

Genes that do not have the "Most Annotated" start:

• AbbeyMikolon_50, Diane_77, Dubu_28, Euratis_44, Heather_45, Lilbooboo_43, Nesbitt_48, Rowa_47, Shawty_42, TG1_38, Vash_42, phiBT1_18,

Summary by start number:

Start 9:

- Found in 1 of 20 (5.0%) of genes in pham
- Manual Annotations of this start: 1 of 15
- Called 100.0% of time when present
- Phage (with cluster) where this start called: Dubu_28 (BJ),

Start 10:

- Found in 1 of 20 (5.0%) of genes in pham
- No Manual Annotations of this start.
- Called 100.0% of time when present
- Phage (with cluster) where this start called: phiBT1_18 (BB1),

Start 12:

- Found in 2 of 20 (10.0%) of genes in pham
- Manual Annotations of this start: 2 of 15
- Called 100.0% of time when present
- Phage (with cluster) where this start called: AbbeyMikolon_50 (BL), Nesbitt_48 (BL),

Start 14:

- Found in 1 of 20 (5.0%) of genes in pham
- Manual Annotations of this start: 1 of 15
- Called 100.0% of time when present
- Phage (with cluster) where this start called: Heather_45 (BB2),

Start 16:

- Found in 1 of 20 (5.0%) of genes in pham
- Manual Annotations of this start: 1 of 15
- Called 100.0% of time when present
- Phage (with cluster) where this start called: Rowa_47 (BL),

Start 17:

- Found in 8 of 20 (40.0%) of genes in pham
- Manual Annotations of this start: 4 of 15
- Called 100.0% of time when present
- Phage (with cluster) where this start called: Alsaber_67 (BD3), Celery_70 (BD3), Conan_70 (BD3), Dexers_65 (BD3), ElGato_70 (BD3), Provolone_68 (BD3), Saftant_65 (BD3), Vanseggelen_72 (BD3),

Start 18:

- Found in 3 of 20 (15.0%) of genes in pham
- Manual Annotations of this start: 3 of 15
- Called 100.0% of time when present
- Phage (with cluster) where this start called: Euratis_44 (BB1), Lilbooboo_43 (BB1), Vash_42 (BB1),

Start 19:

- Found in 3 of 20 (15.0%) of genes in pham
- Manual Annotations of this start: 2 of 15
- Called 66.7% of time when present
- Phage (with cluster) where this start called: Shawty_42 (BB1), TG1_38 (BB1),

Start 24:

- Found in 3 of 20 (15.0%) of genes in pham
- Manual Annotations of this start: 1 of 15
- Called 33.3% of time when present
- Phage (with cluster) where this start called: Diane_77 (BD2),

Summary by clusters:

There are 6 clusters represented in this pham: BL, BJ, BD3, BD2, BB2, BB1,

Info for manual annotations of cluster BB1:

- Start number 18 was manually annotated 3 times for cluster BB1.
- Start number 19 was manually annotated 2 times for cluster BB1.

Info for manual annotations of cluster BB2:

- Start number 14 was manually annotated 1 time for cluster BB2.

Info for manual annotations of cluster BD2:

- Start number 24 was manually annotated 1 time for cluster BD2.

Info for manual annotations of cluster BD3:

- Start number 17 was manually annotated 4 times for cluster BD3.

Info for manual annotations of cluster BJ:

- Start number 9 was manually annotated 1 time for cluster BJ.

Info for manual annotations of cluster BL:

- Start number 12 was manually annotated 2 times for cluster BL.
- Start number 16 was manually annotated 1 time for cluster BL.

Gene Information:

Gene: AbbeyMikolon_50 Start: 34818, Stop: 35045, Start Num: 12

Candidate Starts for AbbeyMikolon_50:

(3, 34713), (4, 34734), (Start: 12 @34818 has 2 MA's), (26, 34875), (27, 34878), (41, 34968), (42, 34980), (48, 35001), (49, 35007),

Gene: Alsaber_67 Start: 43932, Stop: 43747, Start Num: 17

Candidate Starts for Alsaber_67:

(1, 44124), (Start: 17 @43932 has 4 MA's), (27, 43896), (49, 43776),

Gene: Celery_70 Start: 43835, Stop: 43656, Start Num: 17

Candidate Starts for Celery_70:

(Start: 17 @43835 has 4 MA's), (Start: 24 @43811 has 1 MA's), (26, 43802), (39, 43724), (49, 43685),

Gene: Conan_70 Start: 44184, Stop: 43999, Start Num: 17

Candidate Starts for Conan_70:

(Start: 17 @44184 has 4 MA's), (27, 44148), (49, 44028),

Gene: Dexers_65 Start: 44158, Stop: 43973, Start Num: 17

Candidate Starts for Dexers_65:

(Start: 17 @44158 has 4 MA's), (27, 44122), (49, 44002),

Gene: Diane_77 Start: 48864, Stop: 48694, Start Num: 24

Candidate Starts for Diane_77:

(Start: 19 @48882 has 2 MA's), (Start: 24 @48864 has 1 MA's), (37, 48783), (48, 48729), (49, 48723),

Gene: Dubu_28 Start: 22494, Stop: 22727, Start Num: 9

Candidate Starts for Dubu_28:

(Start: 9 @22494 has 1 MA's), (13, 22524), (15, 22533), (23, 22557), (Start: 24 @22563 has 1 MA's), (33, 22593), (34, 22602), (37, 22647), (41, 22662), (42, 22674),

Gene: ElGato_70 Start: 44061, Stop: 43876, Start Num: 17

Candidate Starts for ElGato_70:

(1, 44253), (6, 44145), (Start: 17 @44061 has 4 MA's), (27, 44025), (49, 43905),

Gene: Euratis_44 Start: 32135, Stop: 32332, Start Num: 18

Candidate Starts for Euratis_44:

(11, 32093), (Start: 18 @32135 has 3 MA's), (25, 32156), (28, 32168), (30, 32174), (35, 32216),

Gene: Heather_45 Start: 33301, Stop: 33516, Start Num: 14

Candidate Starts for Heather_45:

(Start: 14 @33301 has 1 MA's), (29, 33346), (32, 33355), (47, 33460), (49, 33469),

Gene: Lilbooboo_43 Start: 32803, Stop: 33003, Start Num: 18

Candidate Starts for Lilbooboo_43:

(11, 32761), (Start: 18 @32803 has 3 MA's), (25, 32824), (28, 32836), (30, 32842), (39, 32911), (49, 32962),

Gene: Nesbitt_48 Start: 34701, Stop: 34934, Start Num: 12

Candidate Starts for Nesbitt_48:

(2, 34584), (3, 34596), (4, 34617), (Start: 12 @34701 has 2 MA's), (26, 34758), (27, 34761), (31, 34773), (37, 34833), (41, 34851), (42, 34863), (45, 34875), (48, 34884), (49, 34890),

Gene: Provolone_68 Start: 44273, Stop: 44088, Start Num: 17

Candidate Starts for Provolone_68:

(1, 44465), (Start: 17 @44273 has 4 MA's), (27, 44237), (49, 44117),

Gene: Rowa_47 Start: 34523, Stop: 34726, Start Num: 16

Candidate Starts for Rowa_47:

(Start: 16 @34523 has 1 MA's), (21, 34538), (30, 34568), (43, 34667), (46, 34676),

Gene: Saftant_65 Start: 44014, Stop: 43835, Start Num: 17

Candidate Starts for Saftant_65:

(6, 44098), (Start: 17 @44014 has 4 MA's), (20, 44005), (22, 43999), (43, 43879), (49, 43864),

Gene: Shawty_42 Start: 32427, Stop: 32624, Start Num: 19

Candidate Starts for Shawty_42:

(Start: 19 @32427 has 2 MA's), (26, 32454), (37, 32526), (44, 32568), (49, 32586),

Gene: TG1_38 Start: 31372, Stop: 31563, Start Num: 19

Candidate Starts for TG1_38:

(Start: 19 @31372 has 2 MA's), (36, 31465), (38, 31477), (40, 31486), (43, 31510), (49, 31531),

Gene: Vanseggelen_72 Start: 43995, Stop: 43816, Start Num: 17

Candidate Starts for Vanseggelen_72:

(8, 44058), (Start: 17 @43995 has 4 MA's), (49, 43845),

Gene: Vash_42 Start: 32602, Stop: 32802, Start Num: 18

Candidate Starts for Vash_42:

(Start: 18 @32602 has 3 MA's), (25, 32623), (28, 32635), (30, 32641), (39, 32710), (49, 32761),

Gene: phiBT1_18 Start: 33362, Stop: 33613, Start Num: 10

Candidate Starts for phiBT1_18:

(5, 33317), (7, 33335), (10, 33362), (31, 33452), (37, 33509), (38, 33515), (39, 33518), (46, 33557),