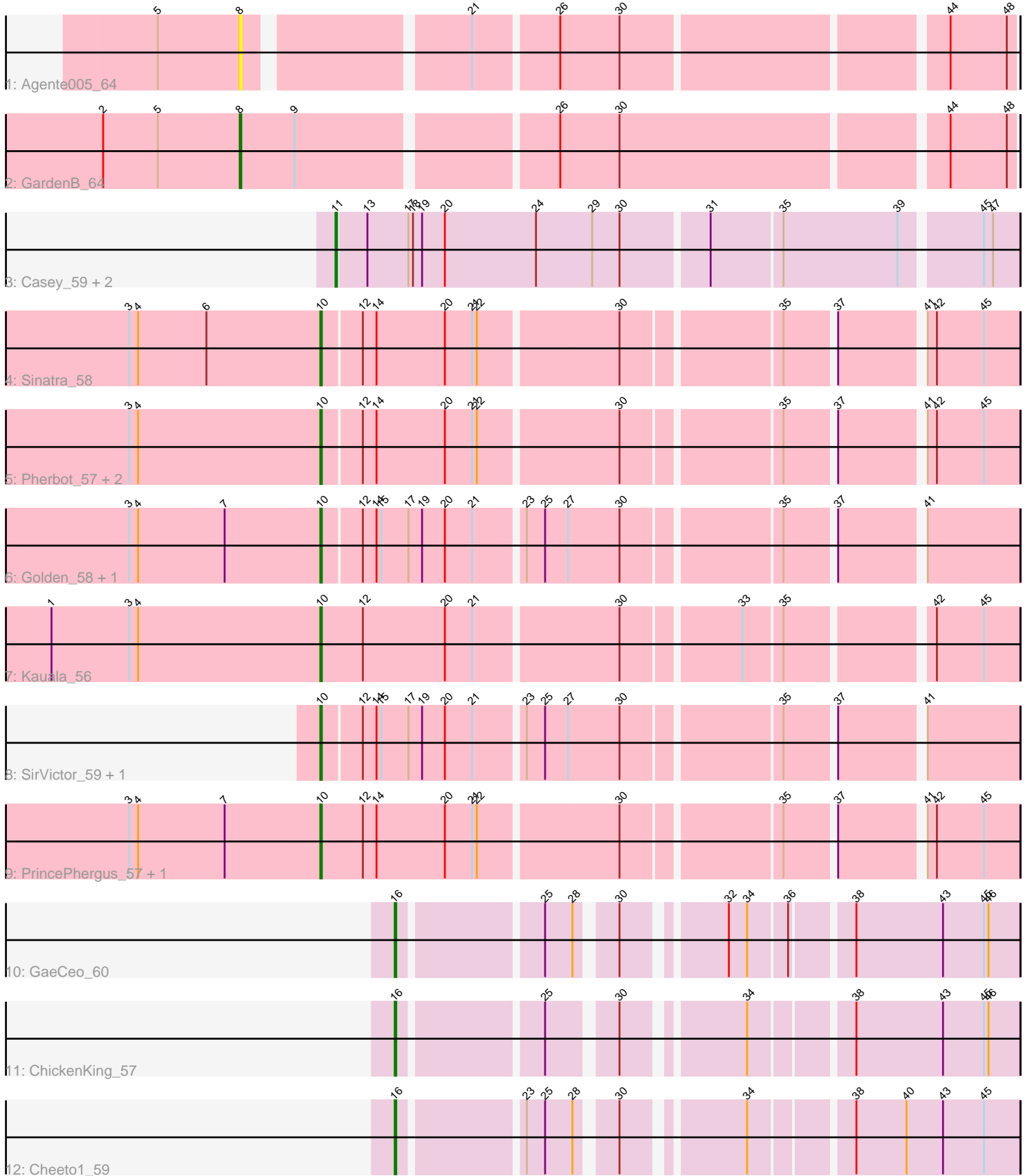


Pham 167025



Note: Tracks are now grouped by subcluster and scaled. Switching in subcluster is indicated by changes in track color. Track scale is now set by default to display the region 30 bp upstream of start 1 to 30 bp downstream of the last possible start. If this default region is judged to be packed too tightly with annotated starts, the track will be further scaled to only show that region of the ORF with annotated starts. This action will be indicated by adding "Zoomed" to the title. For starts, yellow indicates the location of called starts comprised solely of Glimmer/GeneMark auto-annotations, green indicates the location of called starts with at least 1 manual gene annotation.

Pham 167025 Report

This analysis was run 07/09/24 on database version 566.

Pham number 167025 has 19 members, 2 are drafts.

Phages represented in each track:

- Track 1 : Agente005_64
- Track 2 : GardenB_64
- Track 3 : Casey_59, Pikmin_59, Pajaza_59
- Track 4 : Sinatra_58
- Track 5 : Pherbot_57, BouleyBill_58, Bustleton_57
- Track 6 : Golden_58, Lucky3_58
- Track 7 : Kauala_56
- Track 8 : SirVictor_59, Guetzie_59
- Track 9 : PrincePhergus_57, Koji_56
- Track 10 : GaeCeo_60
- Track 11 : ChickenKing_57
- Track 12 : Cheeto1_59

Summary of Final Annotations (See graph section above for start numbers):

The start number called the most often in the published annotations is 10, it was called in 10 of the 17 non-draft genes in the pham.

Genes that call this "Most Annotated" start:

- BouleyBill_58, Bustleton_57, Golden_58, Guetzie_59, Kauala_56, Koji_56, Lucky3_58, Pherbot_57, PrincePhergus_57, Sinatra_58, SirVictor_59,

Genes that have the "Most Annotated" start but do not call it:

-

Genes that do not have the "Most Annotated" start:

- Agente005_64, Casey_59, Cheeto1_59, ChickenKing_57, GaeCeo_60, GardenB_64, Pajaza_59, Pikmin_59,

Summary by start number:

Start 8:

- Found in 2 of 19 (10.5%) of genes in pham
- Manual Annotations of this start: 1 of 17

- Called 100.0% of time when present
- Phage (with cluster) where this start called: Agente005_64 (EA1), GardenB_64 (EA1),

Start 10:

- Found in 11 of 19 (57.9%) of genes in pham
- Manual Annotations of this start: 10 of 17
- Called 100.0% of time when present
- Phage (with cluster) where this start called: BouleyBill_58 (EA4), Bustleton_57 (EA4), Golden_58 (EA4), Guetzie_59 (EA4), Kauala_56 (EA4), Koji_56 (EA4), Lucky3_58 (EA4), Pherbot_57 (EA4), PrincePhergus_57 (EA4), Sinatra_58 (EA4), SirVictor_59 (EA4),

Start 11:

- Found in 3 of 19 (15.8%) of genes in pham
- Manual Annotations of this start: 3 of 17
- Called 100.0% of time when present
- Phage (with cluster) where this start called: Casey_59 (EA3), Pajaza_59 (EA3), Pikmin_59 (EA3),

Start 16:

- Found in 3 of 19 (15.8%) of genes in pham
- Manual Annotations of this start: 3 of 17
- Called 100.0% of time when present
- Phage (with cluster) where this start called: Cheeto1_59 (EA9), ChickenKing_57 (EA9), GaeCeo_60 (EA9),

Summary by clusters:

There are 4 clusters represented in this pham: EA9, EA1, EA3, EA4,

Info for manual annotations of cluster EA1:

- Start number 8 was manually annotated 1 time for cluster EA1.

Info for manual annotations of cluster EA3:

- Start number 11 was manually annotated 3 times for cluster EA3.

Info for manual annotations of cluster EA4:

- Start number 10 was manually annotated 10 times for cluster EA4.

Info for manual annotations of cluster EA9:

- Start number 16 was manually annotated 3 times for cluster EA9.

Gene Information:

Gene: Agente005_64 Start: 41218, Stop: 41679, Start Num: 8

Candidate Starts for Agente005_64:

(5, 41164), (Start: 8 @41218 has 1 MA's), (21, 41350), (26, 41401), (30, 41440), (44, 41638), (48, 41674),

Gene: BouleyBill_58 Start: 38730, Stop: 39152, Start Num: 10

Candidate Starts for BouleyBill_58:

(3, 38604), (4, 38610), (Start: 10 @38730 has 10 MA's), (12, 38754), (14, 38763), (20, 38808), (21, 38826), (22, 38829), (30, 38916), (35, 39012), (37, 39042), (41, 39093), (42, 39099), (45, 39129),

Gene: Bustleton_57 Start: 38699, Stop: 39121, Start Num: 10

Candidate Starts for Bustleton_57:

(3, 38573), (4, 38579), (Start: 10 @38699 has 10 MA's), (12, 38723), (14, 38732), (20, 38777), (21, 38795), (22, 38798), (30, 38885), (35, 38981), (37, 39011), (41, 39062), (42, 39068), (45, 39098),

Gene: Casey_59 Start: 38795, Stop: 39223, Start Num: 11

Candidate Starts for Casey_59:

(Start: 11 @38795 has 3 MA's), (13, 38813), (17, 38840), (18, 38843), (19, 38849), (20, 38864), (24, 38924), (29, 38960), (30, 38978), (31, 39032), (35, 39077), (39, 39152), (45, 39200), (47, 39206),

Gene: Cheeto1_59 Start: 39365, Stop: 39727, Start Num: 16

Candidate Starts for Cheeto1_59:

(Start: 16 @39365 has 3 MA's), (23, 39440), (25, 39452), (28, 39470), (30, 39491), (34, 39560), (38, 39620), (40, 39653), (43, 39677), (45, 39704),

Gene: ChickenKing_57 Start: 39423, Stop: 39785, Start Num: 16

Candidate Starts for ChickenKing_57:

(Start: 16 @39423 has 3 MA's), (25, 39510), (30, 39549), (34, 39618), (38, 39678), (43, 39735), (45, 39762), (46, 39765),

Gene: GaeCeo_60 Start: 39667, Stop: 40029, Start Num: 16

Candidate Starts for GaeCeo_60:

(Start: 16 @39667 has 3 MA's), (25, 39754), (28, 39772), (30, 39793), (32, 39850), (34, 39862), (36, 39886), (38, 39922), (43, 39979), (45, 40006), (46, 40009),

Gene: GardenB_64 Start: 41481, Stop: 41960, Start Num: 8

Candidate Starts for GardenB_64:

(2, 41391), (5, 41427), (Start: 8 @41481 has 1 MA's), (9, 41517), (26, 41676), (30, 41715), (44, 41919), (48, 41955),

Gene: Golden_58 Start: 39155, Stop: 39577, Start Num: 10

Candidate Starts for Golden_58:

(3, 39029), (4, 39035), (7, 39092), (Start: 10 @39155 has 10 MA's), (12, 39179), (14, 39188), (15, 39191), (17, 39209), (19, 39218), (20, 39233), (21, 39251), (23, 39281), (25, 39293), (27, 39308), (30, 39341), (35, 39437), (37, 39467), (41, 39518),

Gene: Guetzie_59 Start: 39273, Stop: 39695, Start Num: 10

Candidate Starts for Guetzie_59:

(Start: 10 @39273 has 10 MA's), (12, 39297), (14, 39306), (15, 39309), (17, 39327), (19, 39336), (20, 39351), (21, 39369), (23, 39399), (25, 39411), (27, 39426), (30, 39459), (35, 39555), (37, 39585), (41, 39636),

Gene: Kauala_56 Start: 38890, Stop: 39315, Start Num: 10

Candidate Starts for Kauala_56:

(1, 38713), (3, 38764), (4, 38770), (Start: 10 @38890 has 10 MA's), (12, 38917), (20, 38971), (21, 38989), (30, 39079), (33, 39151), (35, 39175), (42, 39262), (45, 39292),

Gene: Koji_56 Start: 38918, Stop: 39340, Start Num: 10

Candidate Starts for Koji_56:

(3, 38792), (4, 38798), (7, 38855), (Start: 10 @38918 has 10 MA's), (12, 38942), (14, 38951), (20, 38996), (21, 39014), (22, 39017), (30, 39104), (35, 39200), (37, 39230), (41, 39281), (42, 39287), (45, 39317),

Gene: Lucky3_58 Start: 39155, Stop: 39577, Start Num: 10

Candidate Starts for Lucky3_58:

(3, 39029), (4, 39035), (7, 39092), (Start: 10 @39155 has 10 MA's), (12, 39179), (14, 39188), (15, 39191), (17, 39209), (19, 39218), (20, 39233), (21, 39251), (23, 39281), (25, 39293), (27, 39308), (30, 39341), (35, 39437), (37, 39467), (41, 39518),

Gene: Pajaza_59 Start: 38795, Stop: 39223, Start Num: 11

Candidate Starts for Pajaza_59:

(Start: 11 @38795 has 3 MA's), (13, 38813), (17, 38840), (18, 38843), (19, 38849), (20, 38864), (24, 38924), (29, 38960), (30, 38978), (31, 39032), (35, 39077), (39, 39152), (45, 39200), (47, 39206),

Gene: Pherbot_57 Start: 38686, Stop: 39108, Start Num: 10

Candidate Starts for Pherbot_57:

(3, 38560), (4, 38566), (Start: 10 @38686 has 10 MA's), (12, 38710), (14, 38719), (20, 38764), (21, 38782), (22, 38785), (30, 38872), (35, 38968), (37, 38998), (41, 39049), (42, 39055), (45, 39085),

Gene: Pikmin_59 Start: 38795, Stop: 39223, Start Num: 11

Candidate Starts for Pikmin_59:

(Start: 11 @38795 has 3 MA's), (13, 38813), (17, 38840), (18, 38843), (19, 38849), (20, 38864), (24, 38924), (29, 38960), (30, 38978), (31, 39032), (35, 39077), (39, 39152), (45, 39200), (47, 39206),

Gene: PrincePhergus_57 Start: 38703, Stop: 39128, Start Num: 10

Candidate Starts for PrincePhergus_57:

(3, 38577), (4, 38583), (7, 38640), (Start: 10 @38703 has 10 MA's), (12, 38730), (14, 38739), (20, 38784), (21, 38802), (22, 38805), (30, 38892), (35, 38988), (37, 39018), (41, 39069), (42, 39075), (45, 39105),

Gene: Sinatra_58 Start: 38698, Stop: 39120, Start Num: 10

Candidate Starts for Sinatra_58:

(3, 38572), (4, 38578), (6, 38623), (Start: 10 @38698 has 10 MA's), (12, 38722), (14, 38731), (20, 38776), (21, 38794), (22, 38797), (30, 38884), (35, 38980), (37, 39010), (41, 39061), (42, 39067), (45, 39097),

Gene: SirVictor_59 Start: 39273, Stop: 39695, Start Num: 10

Candidate Starts for SirVictor_59:

(Start: 10 @39273 has 10 MA's), (12, 39297), (14, 39306), (15, 39309), (17, 39327), (19, 39336), (20, 39351), (21, 39369), (23, 39399), (25, 39411), (27, 39426), (30, 39459), (35, 39555), (37, 39585), (41, 39636),