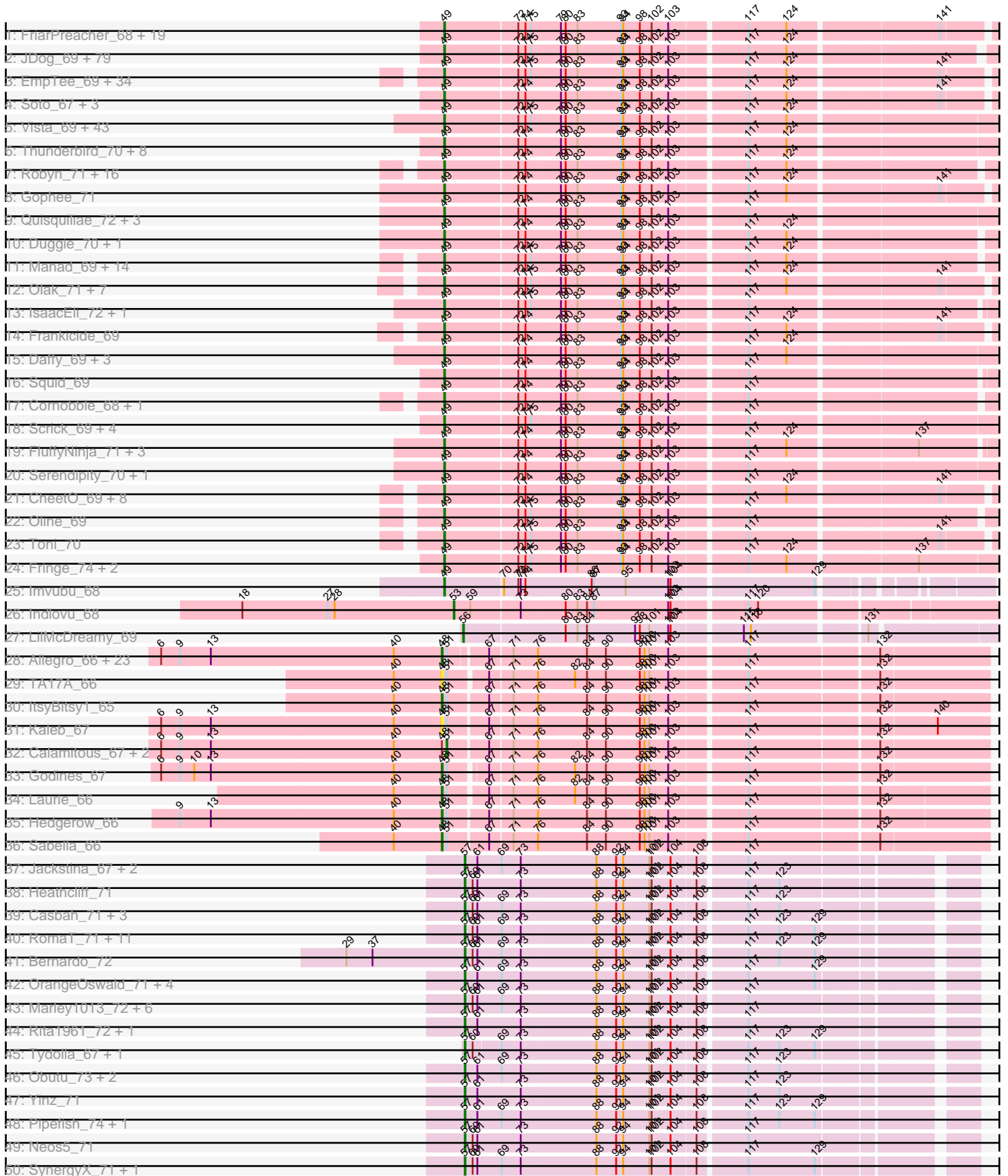
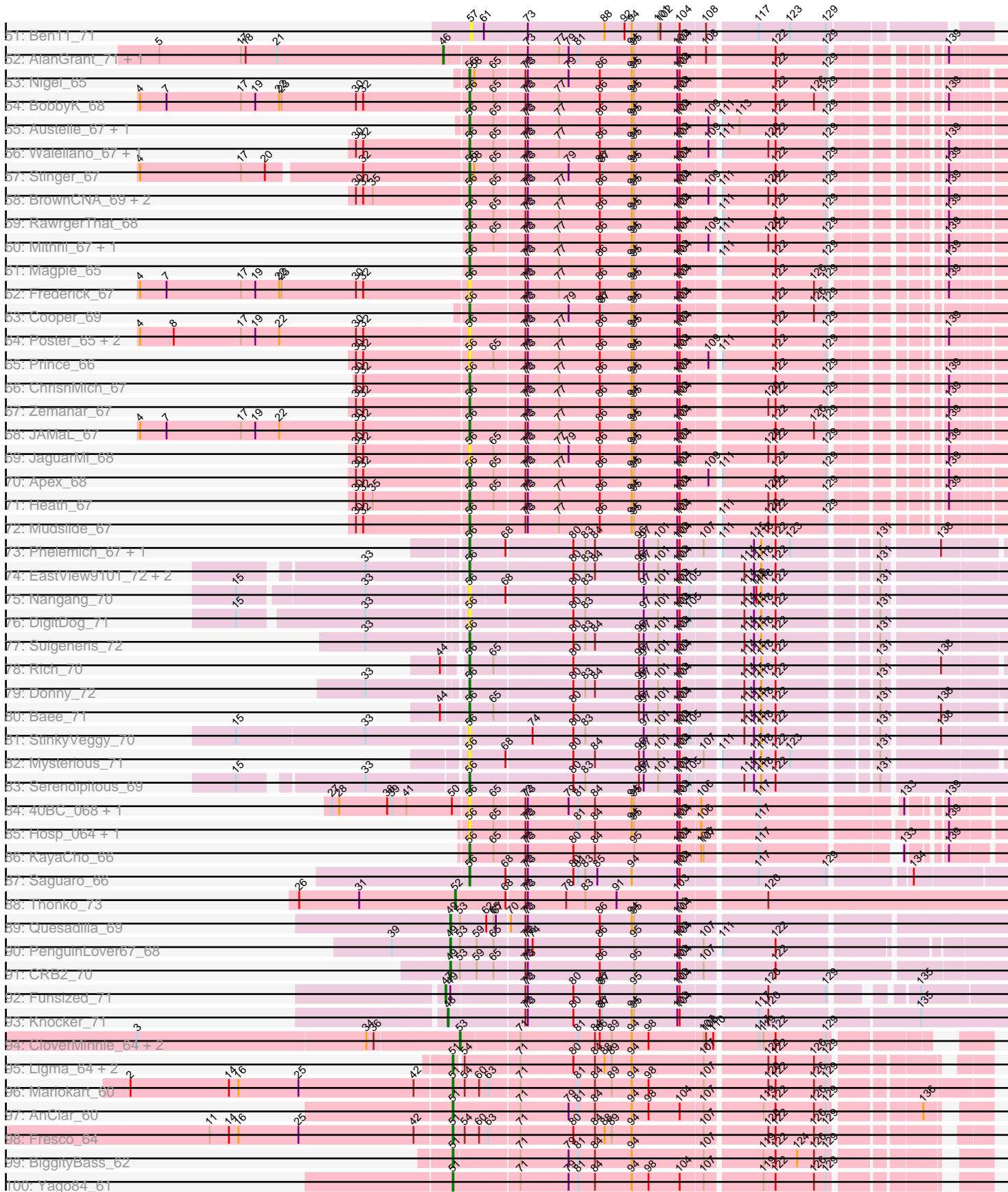


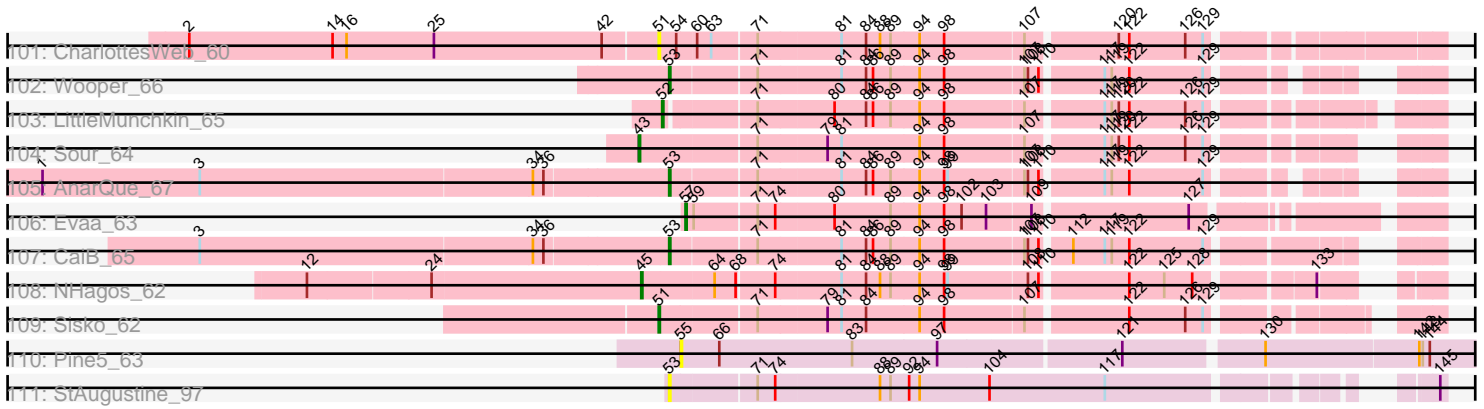
Pham 167903



Pham 167903



Pham 167903



Note: Tracks are now grouped by subcluster and scaled. Switching in subcluster is indicated by changes in track color. Track scale is now set by default to display the region 30 bp upstream of start 1 to 30 bp downstream of the last possible start. If this default region is judged to be packed too tightly with annotated starts, the track will be further scaled to only show that region of the ORF with annotated starts. This action will be indicated by adding "Zoomed" to the title. For starts, yellow indicates the location of called starts comprised solely of Glimmer/GeneMark auto-annotations, green indicates the location of called starts with at least 1 manual gene annotation.

Pham 167903 Report

This analysis was run 07/09/24 on database version 566.

Pham number 167903 has 435 members, 46 are drafts.

Phages represented in each track:

- Track 1 : FriarPreacher_68, Basato_69, Plmatters_68, Banjo_68, QueenBeane_70, Iridoclysis_69, Freya_67, Samaymay_70, Lumine_71, Craff_73, MiniBoss_67, Simielle_70, CamL_70, Placalicious_70, True_68, Ricotta_67, Orfeu_69, Puhltonio_68, Bishoperium_70, Phamished_71
- Track 2 : JDog_69, Magic8_69, Murdoc_67, Weher20_67, Mulan_69, Podrick_69, Boehler_69, Melc17_67, CampRoach_71, Vortex_69, Pipsqueak_67, MichaelPhcott_68, Chute_70, DelRivs_68, Pops_68, YouGoGlencoco_70, UncleHowie_67, Durga_72, Buckeye_70, LemonSlice_70, Cobra_70, TomBombadil_70, Zelda_70, Longacauda_71, Gyarad_0069, PhenghisKhan_70, LeeLot_69, PinheadLarry_69, KlimbOn_69, Doddsville_68, Chaelin_71, Sophia_68, Cher_70, Dati_67, OSmaximus_70, Gwilliam_71, Hocus_68, RedMaple_70, Crownjwl_68, Jiminy_70, Kailash_68, JakeO_71, FugateOSU_70, LostAndPhound_69, Horchata_67, Virgeve_68, LeiMonet_72, MelsMeow_69, Legolas_71, Phareon_68, Morgushi_68, Phergie_70, HighStump_71, Eremos_69, Harvey_67, Surely_70, SassyCat97_68, Lasso_69, Trypo_71, Veritas_69, Squiggle_69, Roscoe_70, Struggle_70, Potter_67, Held_68, Hartsy_69, Soile_71, Fozzie_68, Adriana_71, Mag7_68, Fang_71, PhrankReynolds_69, Andre_71, DonSanchon_66, Coletti_72, Apizium_69, Haimas_68, LasagnaCat_71, BatteryCK_68, Inchworm_71
- Track 3 : EmpTee_69, LuckyMarjie_67, Zaider_71, Mecca_70, Kimbrough_71, Roy17_68, Mcshane_69, Sigman_70, Dice_70, JacAttac_70, Tomlarah_71, ProfessorX_68, Pacifista_71, Olive_68, Omniscient_71, ABU_69, DoesntMatter_67, Lulumae_67, Bluephacebaby_69, Spartan300_69, Beaglebox_68, Roliet_67, Virapocalypse_71, Burr_70, Phunky_68, AltPhacts_68, Vaticameos_67, JangoPhett_68, Nyala_69, Nicole21_71, Dione_68, Selr12_71, Riggan_71, Telesworld_68, Valjean_69
- Track 4 : Soto_67, Labeouficaum_70, Derpp_70, TyrionL_70
- Track 5 : Vista_69, Thora_69, Anderson_72, Badfish_71, GeneCoco_71, Hertubise_70, Kwksand96_71, Cannibal_71, Mesh1_71, Oosterbaan_70, Orion_70, Scoot17C_71, Matalotodo_70, Megatron_71, PhrodoBaggins_72, Mosaic_68, Altwerkus_69, Katniss_72, PG1_70, Chah_72, Mana_69, HenryJackson_71, Pinkman_70, ThreeOh3D2_72, Kahve_71, Eugenia_71, Mutante_71, MRabcd_70, Skippy_72, Hetaeria_70, Maskar_71, Piglet_0071, Zonia_71, Keitherie_73, TallGrassMM_69, Serpentine_0071, Wallhey_71, Jillium_71, ImtiyazSitla_71, Waterdiva_71, Maru_70, UAch1_71, Ashraf_71, Phipps_70
- Track 6 : Thunderbird_70, SDcharge11_69, Swiphy_74, Solosis_68, Windsor_70, PhatLouie_72, Inverness_68, Jiraiya_73, MrPhizzler_69

- Track 7 : Robyn_71, Aelin_69, Kloppinator_70, Usavi_71, KLucky39_68, Suffolk_68, Newman_68, Lopsy_67, Antonia_69, Vaishali24_71, Chunky_70, Carthage_70, Timmi_69, Schadenfreude_70, Tooj_68, Nacho_0073, KingVeVeVe_68
- Track 8 : Gophee_71
- Track 9 : Quisquiliae_72, Numberten_69, Lulwa_68, Morty_71
- Track 10 : Duggie_70, Charles1_71
- Track 11 : Manad_69, Grand2040_68, Etaye_69, Brilliant_73, Schueller_69, Megamind20_70, Giraffe_70, Haleema_69, AbsoluteMadLad_69, Orwigg_70, Kwadwo_69, Gareth_70, CharlieGBrown_68, Phleuron_68, KingTut_61
- Track 12 : Olak_71, Xavier_70, PhatCats2014_71, Lego3393_68, OliverWalter_70, Cosmolli16_72, Childish_70, DaddyDaniels_73
- Track 13 : IsaacEli_72, Kikipoo_72
- Track 14 : Frankicide_69
- Track 15 : Daffy_69, Chorkpop_71, Hamish_67, MitKao_70
- Track 16 : Squid_69
- Track 17 : Cornobble_68, Colbert_68
- Track 18 : Scrick_69, DuchessDung_69, Emiris_71, Slatt_70, Rimu_73
- Track 19 : FluffyNinja_71, Yoshand_71, Pherdinand_71, BlackStallion_71
- Track 20 : Serendipity_70, Swish_71
- Track 21 : CheetO_69, Daka_72, DirtJuice_70, Prickles_71, HSavage_68, Dingo_67, Mikota_67, Sheila_66, BlueHusk_71
- Track 22 : Oline_69
- Track 23 : Toni_70
- Track 24 : Fringe_74, ShiVal_68, Vivaldi_70
- Track 25 : Imvubu_68
- Track 26 : Indlovu_68
- Track 27 : LilMcDreamy_69
- Track 28 : Allegro_66, Kheth_66, Glass_67, LizLemon_66, Lephleur_66, Brownie5_66, Phantasmagoria_65, West99_66, Coffee_66, Rosebush_65, Opia_67, Tinciduntolum_67, Rhinoforte_66, Eaglehorse_66, Arbiter_64, Tres_66, Ares_66, Qyrzula_60, Blocker23_66, Bananafish_67, Lars_67, MasterPo_67, FrenchFry_67, Holeinone_66
- Track 29 : TA17A_66
- Track 30 : ItsyBitsy1_65
- Track 31 : Kaleb_67
- Track 32 : Calamitous_67, Faze9_65, Boyle_66
- Track 33 : Godines_67
- Track 34 : Laurie_66
- Track 35 : Hedgerow_66
- Track 36 : Sabella_66
- Track 37 : Jackstina_67, Phayeta_74, Mortcellus_71
- Track 38 : Heathcliff_71
- Track 39 : Casbah_71, Kamiyu_71, Phaedrus_66, Philly_70
- Track 40 : RomaT_71, SlippinJimmy_74, Devonte_70, Yahalom_69, Baloo_70, Audrey_71, Corofin_71, Briakila_71, Athena_73, Halfpint_71, ChaChing_71, Gervas_72
- Track 41 : Bernardo_72
- Track 42 : OrangeOswald_71, Akoma_71, Nozo_71, Abinghost_71, Deenasa_71
- Track 43 : Marley1013_72, Phlyer_71, Compostia_70, GlenHope_72, RagingRooster_70, Kronus_71, Morty007_70
- Track 44 : Rita1961_72, MmasiCarm_72
- Track 45 : Tydolla_67, HarveySr_70
- Track 46 : Obutu_73, Gadget_72, Chandler_71

- Track 47 : Yinz_71
- Track 48 : Pipefish_74, LestyG_69
- Track 49 : Neos5_71
- Track 50 : SynergyX_71, Daisy_70
- Track 51 : Ben11_71
- Track 52 : AlanGrant_71, Vincenzo_70
- Track 53 : Nigel_65
- Track 54 : BobbyK_68
- Track 55 : Austelle_67, VioletZ_69
- Track 56 : Waleliano_67, Lolalove_69
- Track 57 : Stinger_67
- Track 58 : BrownCNA_69, Hangman_68, Hydro_68
- Track 59 : RawrgerThat_68
- Track 60 : Mithril_67, Fortunato_68
- Track 61 : Magpie_65
- Track 62 : Frederick_67
- Track 63 : Cooper_69
- Track 64 : Poster_65, Ahwei_65, Nanao_66
- Track 65 : Prince_66
- Track 66 : ChrisnMich_67
- Track 67 : Zemanar_67
- Track 68 : JAMaL_67
- Track 69 : JaguarMi_68
- Track 70 : Apex_68
- Track 71 : Heath_67
- Track 72 : Mudslide_67
- Track 73 : Phelemich_67, Reprobate_69
- Track 74 : EastView9101_72, SirJeffery_70, Acadian_71
- Track 75 : Nangang_70
- Track 76 : DigitDog_71
- Track 77 : Suigeneris_72
- Track 78 : Rich_70
- Track 79 : Donny_72
- Track 80 : Bae_71
- Track 81 : StinkyVeggy_70
- Track 82 : Mysterious_71
- Track 83 : Serendipitous_69
- Track 84 : 40BC_068, 39HC_068
- Track 85 : Hosp_064, Jolie1_066
- Track 86 : KayaCho_66
- Track 87 : Saguaro_66
- Track 88 : Thonko_73
- Track 89 : Quesadilla_69
- Track 90 : PenguinLover67_68
- Track 91 : CRB2_70
- Track 92 : Funsized_71
- Track 93 : Knocker_71
- Track 94 : CloverMinnie_64, MossRose_65, MakoManhole_63
- Track 95 : Ligma_64, Axumite_64, Shatter_64
- Track 96 : Mariokart_60
- Track 97 : AnClar_60
- Track 98 : Fresco_64
- Track 99 : BiggityBass_62

- Track 100 : Yago84_61
- Track 101 : CharlottesWeb_60
- Track 102 : Wooper_66
- Track 103 : LittleMunchkin_65
- Track 104 : Sour_64
- Track 105 : AnarQue_67
- Track 106 : Evaa_63
- Track 107 : CaiB_65
- Track 108 : NHagos_62
- Track 109 : Sisko_62
- Track 110 : Pine5_63
- Track 111 : StAugustine_97

Summary of Final Annotations (See graph section above for start numbers):

The start number called the most often in the published annotations is 49, it was called in 257 of the 389 non-draft genes in the pham.

Genes that call this "Most Annotated" start:

- ABU_69, AbsoluteMadLad_69, Adriana_71, Aelin_69, AltPhacts_68, Altwerkus_69, Anderson_72, Andre_71, Antonia_69, Apizium_69, Ashraf_71, Badfish_71, Banjo_68, Basato_69, BatteryCK_68, Beaglebox_68, Bishoperium_70, BlackStallion_71, BlueHusk_71, Bluephacebaby_69, Bohler_69, Brilliant_73, Buckeye_70, Burr_70, CRB2_70, CamL_70, CampRoach_71, Cannibal_71, Carthage_70, Chaelin_71, Chah_72, Charles1_71, CharlieGBrown_68, CheetO_69, Cher_70, Childish_70, Chorkpop_71, Chunky_70, Chute_70, Cobra_70, Colbert_68, Coletti_72, Cornobble_68, Cosmolli16_72, Craff_73, Crownjwl_68, DaddyDaniels_73, Daffy_69, Daka_72, Dati_67, DelRivs_68, Derpp_70, Dice_70, Dingo_67, Dione_68, DirtJuice_70, Doddsville_68, DoesntMatter_67, DonSanchon_66, DuchessDung_69, Duggie_70, Durga_72, Emiris_71, EmpTee_69, Eremos_69, Etaye_69, Eugenia_71, Fang_71, FluffyNinja_71, Fozzie_68, Frankicide_69, Freya_67, FriarPreacher_68, Fringe_74, FugateOSU_70, Gareth_70, GeneCoco_71, Giraffe_70, Gophee_71, Grand2040_68, Gwilliam_71, Gyarad_0069, HSavage_68, Haimas_68, Haleema_69, Hamish_67, Hartsy_69, Harvey_67, Held_68, HenryJackson_71, Hertubise_70, Hetaeria_70, HighStump_71, Hocus_68, Horchata_67, ImtiyazSitla_71, Imvubu_68, Inchworm_71, Inverness_68, Iridoclysis_69, IsaacEli_72, JDog_69, JacAttac_70, JakeO_71, JangoPhett_68, Jillium_71, Jiminy_70, Jiraiya_73, KLucky39_68, Kahve_71, Kailash_68, Katniss_72, Keitherie_73, Kikipoo_72, Kimbrough_71, KingTut_61, KingVeVeVe_68, KlimbOn_69, Kloppinator_70, Kwadwo_69, Kwksand96_71, Labeouficaum_70, LasagnaCat_71, Lasso_69, LeeLot_69, Lego3393_68, Legolas_71, LeiMonet_72, LemonSlice_70, Longacauda_71, Lopsy_67, LostAndPhound_69, LuckyMarjie_67, Lulumae_67, Lulwa_68, Lumine_71, MRabcd_70, Mag7_68, Magic8_69, Mana_69, Manad_69, Maru_70, Maskar_71, Matalotodo_70, Mcshane_69, Mecca_70, Megamind20_70, Megatron_71, Melc17_67, MelsMeow_69, Mesh1_71, MichaelPhcott_68, Mikota_67, MiniBoss_67, MitKao_70, Morgushi_68, Morty_71, Mosaic_68, MrPhizzler_69, Mulan_69, Murdoc_67, Mutante_71, Nacho_0073, Newman_68, Nicole21_71, Numberten_69, Nyala_69, OSmaximus_70, Olak_71, Oline_69, Olive_68, OliverWalter_70, Omniscient_71, Oosterbaan_70, Orfeu_69, Orion_70, Orwigg_70, PG1_70, Pacifista_71, PenguinLover67_68, Phamished_71, Phareon_68, PhatCats2014_71,

PhatLouie_72, PhenghisKhan_70, Pherdinand_71, Phergie_70, Phipps_70, Phleuron_68, PhrankReynolds_69, PhrodoBaggins_72, Phunky_68, Piglet_0071, PinheadLarry_69, Pinkman_70, Pipsqueak_67, Placalicious_70, Plmatters_68, Podrick_69, Pops_68, Potter_67, Prickles_71, ProfessorX_68, Puhltonio_68, QueenBeane_70, Quesadilla_69, Quisquilliae_72, RedMaple_70, Ricotta_67, Riggan_71, Rimu_73, Robyn_71, Roliet_67, Roscoe_70, Roy17_68, SDcharge11_69, Samaymay_70, SassyCat97_68, Schadenfreude_70, Schueller_69, Scoot17C_71, Scrick_69, Selr12_71, Serendipity_70, Serpentine_0071, Sheila_66, ShiVal_68, Sigman_70, Simielle_70, Skippy_72, Slatt_70, Soile_71, Solosis_68, Sophia_68, Soto_67, Spartan300_69, Squid_69, Squiggle_69, Struggle_70, Suffolk_68, Surely_70, Swiphy_74, Swish_71, TallGrassMM_69, Telesworld_68, Thora_69, ThreeOh3D2_72, Thunderbird_70, Timmi_69, TomBombadil_70, Tomlarah_71, Toni_70, Tooj_68, True_68, Trypo_71, TyrionL_70, UAch1_71, UncleHowie_67, Usavi_71, Vaishali24_71, Valjean_69, Vaticameos_67, Veritas_69, Virapocalypse_71, Virgeve_68, Vista_69, Vivaldi_70, Vortex_69, Wallhey_71, Waterdiva_71, Weher20_67, Windsor_70, Xavier_70, Yoshand_71, YouGoGlencoco_70, Zaider_71, Zelda_70, Zonia_71,

Genes that have the "Most Annotated" start but do not call it:

- Funsized_71,

Genes that do not have the "Most Annotated" start:

- 39HC_068, 40BC_068, Abinghost_71, Acadian_71, Ahwei_65, Akoma_71, AlanGrant_71, Allegro_66, AnClar_60, AnarQue_67, Apex_68, Arbiter_64, Ares_66, Athena_73, Audrey_71, Austelle_67, Axumite_64, Bae_71, Baloo_70, Bananafish_67, Ben11_71, Bernardo_72, BiggityBass_62, Blocker23_66, BobbyK_68, Boyle_66, Briakila_71, BrownCNA_69, Brownie5_66, CaiB_65, Calamitous_67, Casbah_71, ChaChing_71, Chandler_71, CharlottesWeb_60, ChrisnMich_67, CloverMinnie_64, Coffee_66, Compostia_70, Cooper_69, Corofin_71, Daisy_70, Deenasa_71, Devonte_70, DigitDog_71, Donny_72, Eaglehorse_66, EastView9101_72, Evaa_63, Faze9_65, Fortunato_68, Frederick_67, FrenchFry_67, Fresco_64, Gadget_72, Gervas_72, Glass_67, GlenHope_72, Godines_67, Halfpint_71, Hangman_68, HarveySr_70, Heath_67, Heathcliff_71, Hedgerow_66, Holeinone_66, Hosp_064, Hydro_68, Indlovu_68, ItsyBitsy1_65, JAMaL_67, Jackstina_67, JaguarMi_68, Jolie1_066, Kaleb_67, Kamiyu_71, KayaCho_66, Kheth_66, Knocker_71, Kronus_71, Lars_67, Laurie_66, Lephleur_66, LestyG_69, Ligma_64, LilMcDreamy_69, LittleMunchkin_65, LizLemon_66, Lolalove_69, Magpie_65, MakoManhole_63, Mariokart_60, Marley1013_72, MasterPo_67, Mithril_67, MmasiCarm_72, Mortcellus_71, Morty007_70, MossRose_65, Mudslide_67, Mysterious_71, NHagos_62, Nanao_66, Nangang_70, Neos5_71, Nigel_65, Nozo_71, Obutu_73, Opia_67, OrangeOswald_71, Phaedrus_66, Phantasmagoria_65, Phayeta_74, Phelemich_67, Philly_70, Phlyer_71, Pine5_63, Pipefish_74, Poster_65, Prince_66, Qyrzula_60, RagingRooster_70, RawrgerThat_68, Reprobate_69, Rhinoforte_66, Rich_70, Rita1961_72, RomaT_71, Rosebush_65, Sabella_66, Saguaro_66, Serendipitous_69, Shatter_64, SirJeffery_70, Sisko_62, SlippinJimmy_74, Sour_64, StAugustine_97, Stinger_67, StinkyVeggy_70, Suigeneris_72, SynergyX_71, TA17A_66, Thonko_73, Tinciduntolum_67, Tres_66, Tydolla_67, Vincenzo_70, VioletZ_69, Waleliano_67, West99_66, Wooper_66, Yago84_61, Yahalom_69, Yinz_71, Zemanar_67,

Summary by start number:

Start 43:

- Found in 1 of 435 (0.2%) of genes in pham
- Manual Annotations of this start: 1 of 389
- Called 100.0% of time when present
- Phage (with cluster) where this start called: Sour_64 (DR),

Start 45:

- Found in 1 of 435 (0.2%) of genes in pham
- Manual Annotations of this start: 1 of 389
- Called 100.0% of time when present
- Phage (with cluster) where this start called: NHagos_62 (DR),

Start 46:

- Found in 2 of 435 (0.5%) of genes in pham
- Manual Annotations of this start: 2 of 389
- Called 100.0% of time when present
- Phage (with cluster) where this start called: AlanGrant_71 (B4), Vincenzo_70 (B4),

Start 47:

- Found in 1 of 435 (0.2%) of genes in pham
- Manual Annotations of this start: 1 of 389
- Called 100.0% of time when present
- Phage (with cluster) where this start called: Funsized_71 (B9),

Start 48:

- Found in 35 of 435 (8.0%) of genes in pham
- Manual Annotations of this start: 30 of 389
- Called 91.4% of time when present
- Phage (with cluster) where this start called: Allegro_66 (B2), Arbitrator_64 (B2), Ares_66 (B2), Bananafish_67 (B2), Blocker23_66 (B2), Brownie5_66 (B2), Coffee_66 (B2), Eaglehorse_66 (B2), FrenchFry_67 (B2), Glass_67 (B2), Godines_67 (B2), Hedgerow_66 (B2), Holeinone_66 (B2), ItsyBitsy1_65 (B2), Kaleb_67 (B2), Kheth_66 (B2), Knocker_71 (B9), Lars_67 (B2), Laurie_66 (B2), Lephleur_66 (B2), LizLemon_66 (B2), MasterPo_67 (B2), Opia_67 (B2), Phantasmagoria_65 (B2), Qyrzula_60 (B2), Rhinoforte_66 (B2), Rosebush_65 (B2), Sabella_66 (B2), TA17A_66 (B2), Tinciduntolum_67 (B2), Tres_66 (B2), West99_66 (B2),

Start 49:

- Found in 279 of 435 (64.1%) of genes in pham
- Manual Annotations of this start: 257 of 389
- Called 99.6% of time when present
- Phage (with cluster) where this start called: ABU_69 (B1), AbsoluteMadLad_69 (B1), Adriana_71 (B1), Aelin_69 (B1), AltPhacts_68 (B1), Altwerkus_69 (B1), Anderson_72 (B1), Andre_71 (B1), Antonia_69 (B1), Apizium_69 (B1), Ashraf_71 (B1), Badfish_71 (B1), Banjo_68 (B1), Basato_69 (B1), BatteryCK_68 (B1), Beaglebox_68 (B1), Bishoperium_70 (B1), BlackStallion_71 (B1), BlueHusk_71 (B1), Bluephacebaby_69 (B1), Boehler_69 (B1), Brilliant_73 (B1), Buckeye_70 (B1), Burr_70 (B1), CRB2_70 (B9), CamL_70 (B1), CampRoach_71 (B1), Cannibal_71 (B1), Carthage_70 (B1), Chaelin_71 (B1), Chah_72 (B1), Charles1_71 (B1), CharlieGBrown_68 (B1), CheetO_69 (B1), Cher_70 (B1), Childish_70 (B1), Chorkpop_71 (B1), Chunky_70 (B1), Chute_70 (B1), Cobra_70 (B1), Colbert_68 (B1), Coletti_72 (B1), Cornobble_68 (B1), Cosmoli16_72 (B1), Craff_73 (B1), Crownjwl_68 (B1), DaddyDaniels_73 (B1), Daffy_69 (B1), Daka_72 (B1), Dati_67

(B1), DelRivs_68 (B1), Derpp_70 (B1), Dice_70 (B1), Dingo_67 (B1), Dione_68 (B1), DirtJuice_70 (B1), Doddsville_68 (B1), DoesntMatter_67 (B1), DonSanchon_66 (B1), DuchessDung_69 (B1), Duggie_70 (B1), Durga_72 (B1), Emiris_71 (B1), EmpTee_69 (B1), Eremos_69 (B1), Etaye_69 (B1), Eugenia_71 (B1), Fang_71 (B1), FluffyNinja_71 (B1), Fozzie_68 (B1), Frankicide_69 (B1), Freya_67 (B1), FriarPreacher_68 (B1), Fringe_74 (B1), FugateOSU_70 (B1), Gareth_70 (B1), GeneCoco_71 (B1), Giraffe_70 (B1), Gophee_71 (B1), Grand2040_68 (B1), Gwilliam_71 (B1), Gyarad_0069 (B1), HSavage_68 (B1), Haimas_68 (B1), Haleema_69 (B1), Hamish_67 (B1), Hartsy_69 (B1), Harvey_67 (B1), Held_68 (B1), HenryJackson_71 (B1), Hertubise_70 (B1), Hetaeria_70 (B1), HighStump_71 (B1), Hocus_68 (B1), Horchata_67 (B1), ImtiyazSitla_71 (B1), Imvubu_68 (B10), Inchworm_71 (B1), Inverness_68 (B1), Iridoclysis_69 (B1), IsaacEli_72 (B1), JDog_69 (B1), JacAttac_70 (B1), JakeO_71 (B1), JangoPhett_68 (B1), Jillium_71 (B1), Jiminy_70 (B1), Jiraiya_73 (B1), KLucky39_68 (B1), Kahve_71 (B1), Kailash_68 (B1), Katniss_72 (B1), Keitherie_73 (B1), Kikipoo_72 (B1), Kimbrough_71 (B1), KingTut_61 (B1), KingVeVeVe_68 (B1), KlimbOn_69 (B1), Kloppinator_70 (B1), Kwadwo_69 (B1), Kwksand96_71 (B1), Labeouficaum_70 (B1), LasagnaCat_71 (B1), Lasso_69 (B1), LeeLot_69 (B1), Lego3393_68 (B1), Legolas_71 (B1), LeiMonet_72 (B1), LemonSlice_70 (B1), Longacauda_71 (B1), Lopsy_67 (B1), LostAndPhound_69 (B1), LuckyMarjie_67 (B1), Lulumae_67 (B1), Lulwa_68 (B1), Lumine_71 (B1), MRabcd_70 (B1), Mag7_68 (B1), Magic8_69 (B1), Mana_69 (B1), Manad_69 (B1), Maru_70 (B1), Maskar_71 (B1), Matalotodo_70 (B1), Mcshane_69 (B1), Mecca_70 (B1), Megamind20_70 (B1), Megatron_71 (B1), Melc17_67 (B1), MelsMeow_69 (B1), Mesh1_71 (B1), MichaelPhcott_68 (B1), Mikota_67 (B1), MiniBoss_67 (B1), MitKao_70 (B1), Morgushi_68 (B1), Morty_71 (B1), Mosaic_68 (B1), MrPhizzler_69 (B1), Mulan_69 (B1), Murdoc_67 (B1), Mutante_71 (B1), Nacho_0073 (B1), Newman_68 (B1), Nicole21_71 (B1), Numberten_69 (B1), Nyala_69 (B1), OSmaximus_70 (B1), Olak_71 (B1), Oline_69 (B1), Olive_68 (B1), OliverWalter_70 (B1), Omniscient_71 (B1), Oosterbaan_70 (B1), Orfeu_69 (B1), Orion_70 (B1), Orwigg_70 (B1), PG1_70 (B1), Pacifista_71 (B1), PenguinLover67_68 (B9), Phamished_71 (B1), Phareon_68 (B1), PhatCats2014_71 (B1), PhatLouie_72 (B1), PhenghisKhan_70 (B1), Pherdinand_71 (B1), Phergie_70 (B1), Phipps_70 (B1), Phleuron_68 (B1), PhrankReynolds_69 (B1), PhrodoBaggins_72 (B1), Phunky_68 (B1), Piglet_0071 (B1), PinheadLarry_69 (B1), Pinkman_70 (B1), Pipsqueak_67 (B1), Placalicious_70 (B1), Plmatters_68 (B1), Podrick_69 (B1), Pops_68 (B1), Potter_67 (B1), Prickles_71 (B1), ProfessorX_68 (B1), Puhltonio_68 (B1), QueenBeane_70 (B1), Quesadilla_69 (B9), Quisquiliae_72 (B1), RedMaple_70 (B1), Ricotta_67 (B1), Riggan_71 (B1), Rimu_73 (B1), Robyn_71 (B1), Roliet_67 (B1), Roscoe_70 (B1), Roy17_68 (B1), SDcharge11_69 (B1), Samaymay_70 (B1), SassyCat97_68 (B1), Schadenfreude_70 (B1), Schueller_69 (B1), Scoot17C_71 (B1), Scrick_69 (B1), Selr12_71 (B1), Serendipity_70 (B1), Serpentine_0071 (B1), Sheila_66 (B1), ShiVal_68 (B1), Sigman_70 (B1), Simielle_70 (B1), Skippy_72 (B1), Slatt_70 (B1), Soile_71 (B1), Solosis_68 (B1), Sophia_68 (B1), Soto_67 (B1), Spartan300_69 (B1), Squid_69 (B1), Squiggle_69 (B1), Struggle_70 (B1), Suffolk_68 (B1), Surely_70 (B1), Swiphy_74 (B1), Swish_71 (B1), TallGrassMM_69 (B1), Telesworld_68 (B1), Thora_69 (B1), ThreeOh3D2_72 (B1), Thunderbird_70 (B1), Timmi_69 (B1), TomBombadil_70 (B1), Tomlarah_71 (B1), Toni_70 (B1), Tooj_68 (B1), True_68 (B1), Trypo_71 (B1), TyrionL_70 (B1), UAch1_71 (B1), UncleHowie_67 (B1), Usavi_71 (B1), Vaishali24_71 (B1), Valjean_69 (B1), Vaticameos_67 (B1), Veritas_69 (B1), Virapocalypse_71 (B1), Virgeve_68 (B1), Vista_69 (B1), Vivaldi_70 (B1), Vortex_69 (B1), Wallhey_71 (B1), Waterdiva_71 (B1), Weher20_67 (B1), Windsor_70 (B1), Xavier_70 (B1), Yoshand_71 (B1), YouGoGlencoco_70 (B1), Zaider_71 (B1), Zelda_70 (B1), Zonia_71 (B1),

Start 51:

- Found in 44 of 435 (10.1%) of genes in pham
- Manual Annotations of this start: 12 of 389
- Called 29.5% of time when present
- Phage (with cluster) where this start called: AnClar_60 (DR), Axumite_64 (DR), BiggityBass_62 (DR), Boyle_66 (B2), Calamitous_67 (B2), CharlottesWeb_60 (DR), Faze9_65 (B2), Fresco_64 (DR), Ligma_64 (DR), Mariokart_60 (DR), Shatter_64 (DR), Sisko_62 (DR), Yago84_61 (DR),

Start 52:

- Found in 2 of 435 (0.5%) of genes in pham
- Manual Annotations of this start: 2 of 389
- Called 100.0% of time when present
- Phage (with cluster) where this start called: LittleMunchkin_65 (DR), Thonko_73 (B8),

Start 53:

- Found in 11 of 435 (2.5%) of genes in pham
- Manual Annotations of this start: 6 of 389
- Called 72.7% of time when present
- Phage (with cluster) where this start called: AnarQue_67 (DR), CaiB_65 (DR), CloverMinnie_64 (DR), Indlovu_68 (B11), MakoManhole_63 (DR), MossRose_65 (DR), StAugustine_97 (singleton), Wooper_66 (DR),

Start 55:

- Found in 1 of 435 (0.2%) of genes in pham
- No Manual Annotations of this start.
- Called 100.0% of time when present
- Phage (with cluster) where this start called: Pine5_63 (singleton),

Start 56:

- Found in 48 of 435 (11.0%) of genes in pham
- Manual Annotations of this start: 32 of 389
- Called 100.0% of time when present
- Phage (with cluster) where this start called: 39HC_068 (B6), 40BC_068 (B6), Acadian_71 (B5), Ahwei_65 (B4), Apex_68 (B4), Austelle_67 (B4), Bae_71 (B5), BobbyK_68 (B4), BrownCNA_69 (B4), ChrisnMich_67 (B4), Cooper_69 (B4), DigitDog_71 (B5), Donny_72 (B5), EastView9101_72 (B5), Fortunato_68 (B4), Frederick_67 (B4), Hangman_68 (B4), Heath_67 (B4), Hosp_064 (B6), Hydro_68 (B4), JAMaL_67 (B4), JaguarMi_68 (B4), Jolie1_066 (B6), KayaCho_66 (B6), LilMcDreamy_69 (B12), Lolalove_69 (B4), Magpie_65 (B4), Mithril_67 (B4), Mudslide_67 (B4), Mysterious_71 (B5), Nanao_66 (B4), Nangang_70 (B5), Nigel_65 (B4), Phelemich_67 (B5), Poster_65 (B4), Prince_66 (B4), RawrgerThat_68 (B4), Reprobate_69 (B5), Rich_70 (B5), Saguaro_66 (B7), Serendipitous_69 (B5), SirJeffery_70 (B5), Stinger_67 (B4), StinkyVeggy_70 (B5), Suigeneris_72 (B5), VioletZ_69 (B4), Waleliano_67 (B4), Zemanar_67 (B4),

Start 57:

- Found in 48 of 435 (11.0%) of genes in pham
- Manual Annotations of this start: 45 of 389
- Called 100.0% of time when present

- Phage (with cluster) where this start called: Abinghost_71 (B3), Akoma_71 (B3), Athena_73 (B3), Audrey_71 (B3), Baloo_70 (B3), Ben11_71 (B3), Bernardo_72 (B3), Briakila_71 (B3), Casbah_71 (B3), ChaChing_71 (B3), Chandler_71 (B3), Compostia_70 (B3), Corofin_71 (B3), Daisy_70 (B3), Deenasa_71 (B3), Devonte_70 (B3), Evaa_63 (DR), Gadget_72 (B3), Gervas_72 (B3), GlenHope_72 (B3), Halfpint_71 (B3), HarveySr_70 (B3), Heathcliff_71 (B3), Jackstina_67 (B3), Kamiyu_71 (B3), Kronus_71 (B3), LestyG_69 (B3), Marley1013_72 (B3), MmasiCarm_72 (B3), Mortcellus_71 (B3), Morty007_70 (B3), Neos5_71 (B3), Nozo_71 (B3), Obutu_73 (B3), OrangeOswald_71 (B3), Phaedrus_66 (B3), Phayeta_74 (B3), Philly_70 (B3), Phlyer_71 (B3), Pipefish_74 (B3), RagingRooster_70 (B3), Rita1961_72 (B3), RomaT_71 (B3), SlippinJimmy_74 (B3), SynergyX_71 (B3), Tydolla_67 (B3), Yahalom_69 (B3), Yinz_71 (B3),

Summary by clusters:

There are 14 clusters represented in this pham: singleton, B10, B8, B11, B4, B5, B6, B7, B12, B1, B2, B3, DR, B9,

Info for manual annotations of cluster B1:

- Start number 49 was manually annotated 253 times for cluster B1.

Info for manual annotations of cluster B10:

- Start number 49 was manually annotated 1 time for cluster B10.

Info for manual annotations of cluster B11:

- Start number 53 was manually annotated 1 time for cluster B11.

Info for manual annotations of cluster B12:

- Start number 56 was manually annotated 1 time for cluster B12.

Info for manual annotations of cluster B2:

- Start number 48 was manually annotated 29 times for cluster B2.

- Start number 51 was manually annotated 3 times for cluster B2.

Info for manual annotations of cluster B3:

- Start number 57 was manually annotated 44 times for cluster B3.

Info for manual annotations of cluster B4:

- Start number 46 was manually annotated 2 times for cluster B4.

- Start number 56 was manually annotated 21 times for cluster B4.

Info for manual annotations of cluster B5:

- Start number 56 was manually annotated 8 times for cluster B5.

Info for manual annotations of cluster B6:

- Start number 56 was manually annotated 1 time for cluster B6.

Info for manual annotations of cluster B7:

- Start number 56 was manually annotated 1 time for cluster B7.

Info for manual annotations of cluster B8:

- Start number 52 was manually annotated 1 time for cluster B8.

Info for manual annotations of cluster B9:

- Start number 47 was manually annotated 1 time for cluster B9.
- Start number 48 was manually annotated 1 time for cluster B9.
- Start number 49 was manually annotated 3 times for cluster B9.

Info for manual annotations of cluster DR:

- Start number 43 was manually annotated 1 time for cluster DR.
- Start number 45 was manually annotated 1 time for cluster DR.
- Start number 51 was manually annotated 9 times for cluster DR.
- Start number 52 was manually annotated 1 time for cluster DR.
- Start number 53 was manually annotated 5 times for cluster DR.
- Start number 57 was manually annotated 1 time for cluster DR.

Gene Information:

Gene: 39HC_068 Start: 58083, Stop: 58772, Start Num: 56

Candidate Starts for 39HC_068:

(27, 57918), (28, 57927), (38, 57987), (39, 57993), (41, 58011), (50, 58065), (Start: 56 @58083 has 32 MA's), (65, 58113), (72, 58149), (73, 58152), (79, 58200), (81, 58212), (84, 58233), (94, 58278), (95, 58281), (103, 58335), (104, 58338), (106, 58362), (117, 58425), (133, 58581), (139, 58614),

Gene: 40BC_068 Start: 58083, Stop: 58772, Start Num: 56

Candidate Starts for 40BC_068:

(27, 57918), (28, 57927), (38, 57987), (39, 57993), (41, 58011), (50, 58065), (Start: 56 @58083 has 32 MA's), (65, 58113), (72, 58149), (73, 58152), (79, 58200), (81, 58212), (84, 58233), (94, 58278), (95, 58281), (103, 58335), (104, 58338), (106, 58362), (117, 58425), (133, 58581), (139, 58614),

Gene: ABU_69 Start: 57848, Stop: 58543, Start Num: 49

Candidate Starts for ABU_69:

(Start: 49 @57848 has 257 MA's), (72, 57938), (74, 57947), (75, 57953), (79, 57989), (80, 57995), (83, 58010), (93, 58064), (94, 58067), (98, 58088), (102, 58103), (103, 58124), (117, 58214), (124, 58262), (141, 58442),

Gene: Abinghost_71 Start: 57879, Stop: 58478, Start Num: 57

Candidate Starts for Abinghost_71:

(Start: 57 @57879 has 45 MA's), (61, 57894), (69, 57924), (73, 57948), (88, 58041), (92, 58065), (94, 58074), (101, 58107), (102, 58110), (104, 58134), (108, 58164), (117, 58221), (129, 58305),

Gene: AbsoluteMadLad_69 Start: 57803, Stop: 58510, Start Num: 49

Candidate Starts for AbsoluteMadLad_69:

(Start: 49 @57803 has 257 MA's), (72, 57893), (74, 57902), (75, 57908), (79, 57944), (80, 57950), (83, 57965), (93, 58019), (94, 58022), (98, 58043), (102, 58058), (103, 58079), (117, 58169), (124, 58217),

Gene: Acadian_71 Start: 59118, Stop: 59765, Start Num: 56

Candidate Starts for Acadian_71:

(33, 59004), (Start: 56 @59118 has 32 MA's), (80, 59241), (83, 59256), (84, 59268), (96, 59322), (97, 59328), (101, 59346), (103, 59370), (104, 59373), (114, 59442), (115, 59454), (118, 59463), (122, 59481), (131, 59589),

Gene: Adriana_71 Start: 58383, Stop: 59081, Start Num: 49

Candidate Starts for Adriana_71:

(Start: 49 @58383 has 257 MA's), (72, 58473), (74, 58482), (75, 58488), (79, 58524), (80, 58530), (83, 58545), (93, 58599), (94, 58602), (98, 58623), (102, 58638), (103, 58659), (117, 58749), (124, 58797),

Gene: Aelin_69 Start: 57368, Stop: 58066, Start Num: 49

Candidate Starts for Aelin_69:

(Start: 49 @57368 has 257 MA's), (72, 57458), (74, 57467), (79, 57509), (80, 57515), (83, 57530), (93, 57584), (94, 57587), (98, 57608), (102, 57623), (103, 57644), (117, 57734), (124, 57782),

Gene: Ahwei_65 Start: 58476, Stop: 59063, Start Num: 56

Candidate Starts for Ahwei_65:

(4, 58071), (8, 58113), (17, 58197), (19, 58215), (22, 58245), (30, 58341), (32, 58350), (Start: 56 @58476 has 32 MA's), (72, 58542), (73, 58545), (77, 58581), (86, 58632), (94, 58671), (95, 58674), (103, 58728), (104, 58731), (122, 58839), (129, 58902), (139, 59004),

Gene: Akoma_71 Start: 57919, Stop: 58518, Start Num: 57

Candidate Starts for Akoma_71:

(Start: 57 @57919 has 45 MA's), (61, 57934), (69, 57964), (73, 57988), (88, 58081), (92, 58105), (94, 58114), (101, 58147), (102, 58150), (104, 58174), (108, 58204), (117, 58261), (129, 58345),

Gene: AlanGrant_71 Start: 60795, Stop: 61415, Start Num: 46

Candidate Starts for AlanGrant_71:

(5, 60447), (17, 60546), (18, 60552), (21, 60591), (Start: 46 @60795 has 2 MA's), (73, 60891), (77, 60927), (79, 60939), (81, 60951), (94, 61017), (95, 61020), (103, 61074), (104, 61077), (108, 61107), (122, 61185), (129, 61248), (139, 61350),

Gene: Allegro_66 Start: 56167, Stop: 56817, Start Num: 48

Candidate Starts for Allegro_66:

(6, 55813), (9, 55837), (13, 55876), (40, 56107), (Start: 48 @56167 has 30 MA's), (Start: 51 @56173 has 12 MA's), (67, 56218), (71, 56245), (76, 56275), (84, 56335), (90, 56359), (98, 56401), (100, 56407), (101, 56413), (103, 56437), (117, 56527), (132, 56683),

Gene: AltPhacts_68 Start: 56900, Stop: 57595, Start Num: 49

Candidate Starts for AltPhacts_68:

(Start: 49 @56900 has 257 MA's), (72, 56990), (74, 56999), (75, 57005), (79, 57041), (80, 57047), (83, 57062), (93, 57116), (94, 57119), (98, 57140), (102, 57155), (103, 57176), (117, 57266), (124, 57314), (141, 57494),

Gene: Altwerkus_69 Start: 57155, Stop: 57862, Start Num: 49

Candidate Starts for Altwerkus_69:

(Start: 49 @57155 has 257 MA's), (72, 57245), (74, 57254), (75, 57260), (79, 57296), (80, 57302), (83, 57317), (93, 57371), (94, 57374), (98, 57395), (102, 57410), (103, 57431), (117, 57521), (124, 57569),

Gene: AnClar_60 Start: 52491, Stop: 53087, Start Num: 51

Candidate Starts for AnClar_60:

(Start: 51 @52491 has 12 MA's), (71, 52569), (79, 52626), (81, 52638), (84, 52659), (94, 52704), (98, 52725), (104, 52764), (107, 52791), (119, 52857), (122, 52872), (126, 52920), (129, 52935), (136, 53031),

Gene: AnarQue_67 Start: 53185, Stop: 53751, Start Num: 53

Candidate Starts for AnarQue_67:

(1, 52657), (3, 52792), (34, 53074), (36, 53083), (Start: 53 @53185 has 6 MA's), (71, 53254), (81, 53323), (84, 53344), (86, 53350), (89, 53365), (94, 53389), (98, 53410), (99, 53413), (107, 53476), (108, 53479), (110, 53488), (117, 53536), (119, 53542), (122, 53557), (129, 53620),

Gene: Anderson_72 Start: 57727, Stop: 58422, Start Num: 49

Candidate Starts for Anderson_72:

(Start: 49 @57727 has 257 MA's), (72, 57817), (74, 57826), (75, 57832), (79, 57868), (80, 57874), (83, 57889), (93, 57943), (94, 57946), (98, 57967), (102, 57982), (103, 58003), (117, 58093), (124, 58141),

Gene: Andre_71 Start: 57733, Stop: 58440, Start Num: 49

Candidate Starts for Andre_71:

(Start: 49 @57733 has 257 MA's), (72, 57823), (74, 57832), (75, 57838), (79, 57874), (80, 57880), (83, 57895), (93, 57949), (94, 57952), (98, 57973), (102, 57988), (103, 58009), (117, 58099), (124, 58147),

Gene: Antonia_69 Start: 57367, Stop: 58065, Start Num: 49

Candidate Starts for Antonia_69:

(Start: 49 @57367 has 257 MA's), (72, 57457), (74, 57466), (79, 57508), (80, 57514), (83, 57529), (93, 57583), (94, 57586), (98, 57607), (102, 57622), (103, 57643), (117, 57733), (124, 57781),

Gene: Apex_68 Start: 59579, Stop: 60166, Start Num: 56

Candidate Starts for Apex_68:

(30, 59444), (32, 59453), (Start: 56 @59579 has 32 MA's), (65, 59609), (72, 59645), (73, 59648), (77, 59684), (86, 59735), (94, 59774), (95, 59777), (103, 59831), (104, 59834), (109, 59867), (111, 59876), (122, 59942), (129, 60005), (139, 60107),

Gene: Apizium_69 Start: 56999, Stop: 57709, Start Num: 49

Candidate Starts for Apizium_69:

(Start: 49 @56999 has 257 MA's), (72, 57089), (74, 57098), (75, 57104), (79, 57140), (80, 57146), (83, 57161), (93, 57215), (94, 57218), (98, 57239), (102, 57254), (103, 57275), (117, 57365), (124, 57413),

Gene: Arbiter_64 Start: 56199, Stop: 56852, Start Num: 48

Candidate Starts for Arbiter_64:

(6, 55845), (9, 55869), (13, 55908), (40, 56139), (Start: 48 @56199 has 30 MA's), (Start: 51 @56205 has 12 MA's), (67, 56253), (71, 56280), (76, 56310), (84, 56370), (90, 56394), (98, 56436), (100, 56442), (101, 56448), (103, 56472), (117, 56562), (132, 56718),

Gene: Ares_66 Start: 56170, Stop: 56823, Start Num: 48

Candidate Starts for Ares_66:

(6, 55816), (9, 55840), (13, 55879), (40, 56110), (Start: 48 @56170 has 30 MA's), (Start: 51 @56176 has 12 MA's), (67, 56224), (71, 56251), (76, 56281), (84, 56341), (90, 56365), (98, 56407), (100, 56413), (101, 56419), (103, 56443), (117, 56533), (132, 56689),

Gene: Ashraf_71 Start: 57709, Stop: 58416, Start Num: 49

Candidate Starts for Ashraf_71:

(Start: 49 @57709 has 257 MA's), (72, 57799), (74, 57808), (75, 57814), (79, 57850), (80, 57856), (83, 57871), (93, 57925), (94, 57928), (98, 57949), (102, 57964), (103, 57985), (117, 58075), (124, 58123),

Gene: Athena_73 Start: 58654, Stop: 59253, Start Num: 57

Candidate Starts for Athena_73:

(Start: 57 @58654 has 45 MA's), (60, 58663), (61, 58669), (69, 58699), (73, 58723), (88, 58816), (92, 58840), (94, 58849), (101, 58882), (102, 58885), (104, 58909), (108, 58939), (117, 58996), (123, 59035), (129, 59080),

Gene: Audrey_71 Start: 57918, Stop: 58517, Start Num: 57

Candidate Starts for Audrey_71:

(Start: 57 @57918 has 45 MA's), (60, 57927), (61, 57933), (69, 57963), (73, 57987), (88, 58080), (92, 58104), (94, 58113), (101, 58146), (102, 58149), (104, 58173), (108, 58203), (117, 58260), (123, 58299), (129, 58344),

Gene: Austelle_67 Start: 60096, Stop: 60683, Start Num: 56

Candidate Starts for Austelle_67:

(Start: 56 @60096 has 32 MA's), (65, 60126), (72, 60162), (73, 60165), (77, 60201), (86, 60252), (94, 60291), (95, 60294), (103, 60348), (104, 60351), (109, 60384), (111, 60393), (113, 60414), (122, 60459), (129, 60522),

Gene: Axumite_64 Start: 51329, Stop: 51919, Start Num: 51

Candidate Starts for Axumite_64:

(Start: 51 @51329 has 12 MA's), (54, 51338), (71, 51401), (80, 51464), (84, 51491), (88, 51503), (89, 51512), (94, 51536), (107, 51623), (120, 51695), (122, 51704), (126, 51752), (129, 51767),

Gene: Badfish_71 Start: 58013, Stop: 58720, Start Num: 49

Candidate Starts for Badfish_71:

(Start: 49 @58013 has 257 MA's), (72, 58103), (74, 58112), (75, 58118), (79, 58154), (80, 58160), (83, 58175), (93, 58229), (94, 58232), (98, 58253), (102, 58268), (103, 58289), (117, 58379), (124, 58427),

Gene: Bae_71 Start: 60200, Stop: 60841, Start Num: 56

Candidate Starts for Bae_71:

(44, 60167), (Start: 56 @60200 has 32 MA's), (65, 60230), (80, 60323), (96, 60404), (97, 60410), (101, 60428), (103, 60452), (104, 60455), (114, 60524), (115, 60536), (118, 60545), (122, 60563), (131, 60671), (138, 60737),

Gene: Baloo_70 Start: 57751, Stop: 58350, Start Num: 57

Candidate Starts for Baloo_70:

(Start: 57 @57751 has 45 MA's), (60, 57760), (61, 57766), (69, 57796), (73, 57820), (88, 57913), (92, 57937), (94, 57946), (101, 57979), (102, 57982), (104, 58006), (108, 58036), (117, 58093), (123, 58132), (129, 58177),

Gene: Bananafish_67 Start: 56100, Stop: 56753, Start Num: 48

Candidate Starts for Bananafish_67:

(6, 55746), (9, 55770), (13, 55809), (40, 56040), (Start: 48 @56100 has 30 MA's), (Start: 51 @56106 has 12 MA's), (67, 56154), (71, 56181), (76, 56211), (84, 56271), (90, 56295), (98, 56337), (100, 56343), (101, 56349), (103, 56373), (117, 56463), (132, 56619),

Gene: Banjo_68 Start: 57312, Stop: 58007, Start Num: 49

Candidate Starts for Banjo_68:

(Start: 49 @57312 has 257 MA's), (72, 57402), (74, 57411), (75, 57417), (79, 57453), (80, 57459), (83, 57474), (93, 57528), (94, 57531), (98, 57552), (102, 57567), (103, 57588), (117, 57678), (124, 57726), (141, 57906),

Gene: Basato_69 Start: 57588, Stop: 58292, Start Num: 49

Candidate Starts for Basato_69:

(Start: 49 @57588 has 257 MA's), (72, 57678), (74, 57687), (75, 57693), (79, 57729), (80, 57735), (83, 57750), (93, 57804), (94, 57807), (98, 57828), (102, 57843), (103, 57864), (117, 57954), (124, 58002), (141, 58182),

Gene: BatteryCK_68 Start: 57282, Stop: 57980, Start Num: 49

Candidate Starts for BatteryCK_68:

(Start: 49 @57282 has 257 MA's), (72, 57372), (74, 57381), (75, 57387), (79, 57423), (80, 57429), (83, 57444), (93, 57498), (94, 57501), (98, 57522), (102, 57537), (103, 57558), (117, 57648), (124, 57696),

Gene: Beaglebox_68 Start: 57423, Stop: 58118, Start Num: 49

Candidate Starts for Beaglebox_68:

(Start: 49 @57423 has 257 MA's), (72, 57513), (74, 57522), (75, 57528), (79, 57564), (80, 57570), (83, 57585), (93, 57639), (94, 57642), (98, 57663), (102, 57678), (103, 57699), (117, 57789), (124, 57837), (141, 58017),

Gene: Ben11_71 Start: 58136, Stop: 58735, Start Num: 57

Candidate Starts for Ben11_71:

(Start: 57 @58136 has 45 MA's), (61, 58151), (73, 58205), (88, 58298), (92, 58322), (94, 58331), (101, 58364), (102, 58367), (104, 58391), (108, 58421), (117, 58478), (123, 58517), (129, 58562),

Gene: Bernardo_72 Start: 58117, Stop: 58716, Start Num: 57

Candidate Starts for Bernardo_72:

(29, 57967), (37, 58000), (Start: 57 @58117 has 45 MA's), (60, 58126), (61, 58132), (69, 58162), (73, 58186), (88, 58279), (92, 58303), (94, 58312), (101, 58345), (102, 58348), (104, 58372), (108, 58402), (117, 58459), (123, 58498), (129, 58543),

Gene: BiggityBass_62 Start: 53047, Stop: 53640, Start Num: 51

Candidate Starts for BiggityBass_62:

(Start: 51 @53047 has 12 MA's), (71, 53122), (79, 53179), (81, 53191), (84, 53212), (94, 53257), (107, 53344), (119, 53410), (122, 53425), (124, 53452), (126, 53473), (129, 53488),

Gene: Bishoperium_70 Start: 57867, Stop: 58562, Start Num: 49

Candidate Starts for Bishoperium_70:

(Start: 49 @57867 has 257 MA's), (72, 57957), (74, 57966), (75, 57972), (79, 58008), (80, 58014), (83, 58029), (93, 58083), (94, 58086), (98, 58107), (102, 58122), (103, 58143), (117, 58233), (124, 58281), (141, 58461),

Gene: BlackStallion_71 Start: 57756, Stop: 58454, Start Num: 49

Candidate Starts for BlackStallion_71:

(Start: 49 @57756 has 257 MA's), (72, 57846), (74, 57855), (79, 57897), (80, 57903), (83, 57918), (93, 57972), (94, 57975), (98, 57996), (102, 58011), (103, 58032), (117, 58122), (124, 58170), (137, 58323),

Gene: Blocker23_66 Start: 56167, Stop: 56817, Start Num: 48

Candidate Starts for Blocker23_66:

(6, 55813), (9, 55837), (13, 55876), (40, 56107), (Start: 48 @56167 has 30 MA's), (Start: 51 @56173 has 12 MA's), (67, 56218), (71, 56245), (76, 56275), (84, 56335), (90, 56359), (98, 56401), (100, 56407), (101, 56413), (103, 56437), (117, 56527), (132, 56683),

Gene: BlueHusk_71 Start: 57368, Stop: 58063, Start Num: 49

Candidate Starts for BlueHusk_71:

(Start: 49 @57368 has 257 MA's), (72, 57458), (74, 57467), (79, 57509), (80, 57515), (83, 57530), (93, 57584), (94, 57587), (98, 57608), (102, 57623), (103, 57644), (117, 57734), (124, 57782), (141, 57962),

Gene: Bluephacebaby_69 Start: 57900, Stop: 58595, Start Num: 49

Candidate Starts for Bluephacebaby_69:

(Start: 49 @57900 has 257 MA's), (72, 57990), (74, 57999), (75, 58005), (79, 58041), (80, 58047), (83, 58062), (93, 58116), (94, 58119), (98, 58140), (102, 58155), (103, 58176), (117, 58266), (124, 58314),

(141, 58494),

Gene: BobbyK_68 Start: 59356, Stop: 59943, Start Num: 56

Candidate Starts for BobbyK_68:

(4, 58951), (7, 58984), (17, 59077), (19, 59095), (22, 59125), (23, 59128), (30, 59221), (32, 59230), (Start: 56 @59356 has 32 MA's), (65, 59386), (72, 59422), (73, 59425), (77, 59461), (86, 59512), (94, 59551), (95, 59554), (103, 59608), (104, 59611), (122, 59719), (126, 59767), (129, 59782), (139, 59884),

Gene: Boehler_69 Start: 57515, Stop: 58222, Start Num: 49

Candidate Starts for Boehler_69:

(Start: 49 @57515 has 257 MA's), (72, 57605), (74, 57614), (75, 57620), (79, 57656), (80, 57662), (83, 57677), (93, 57731), (94, 57734), (98, 57755), (102, 57770), (103, 57791), (117, 57881), (124, 57929),

Gene: Boyle_66 Start: 56214, Stop: 56861, Start Num: 51

Candidate Starts for Boyle_66:

(6, 55854), (9, 55878), (13, 55917), (40, 56148), (Start: 48 @56208 has 30 MA's), (Start: 51 @56214 has 12 MA's), (67, 56262), (71, 56289), (76, 56319), (84, 56379), (90, 56403), (98, 56445), (100, 56451), (101, 56457), (103, 56481), (117, 56571), (132, 56727),

Gene: Briakila_71 Start: 58117, Stop: 58716, Start Num: 57

Candidate Starts for Briakila_71:

(Start: 57 @58117 has 45 MA's), (60, 58126), (61, 58132), (69, 58162), (73, 58186), (88, 58279), (92, 58303), (94, 58312), (101, 58345), (102, 58348), (104, 58372), (108, 58402), (117, 58459), (123, 58498), (129, 58543),

Gene: Brilliant_73 Start: 57866, Stop: 58573, Start Num: 49

Candidate Starts for Brilliant_73:

(Start: 49 @57866 has 257 MA's), (72, 57956), (74, 57965), (75, 57971), (79, 58007), (80, 58013), (83, 58028), (93, 58082), (94, 58085), (98, 58106), (102, 58121), (103, 58142), (117, 58232), (124, 58280),

Gene: BrownCNA_69 Start: 59733, Stop: 60320, Start Num: 56

Candidate Starts for BrownCNA_69:

(30, 59598), (32, 59607), (35, 59619), (Start: 56 @59733 has 32 MA's), (65, 59763), (72, 59799), (73, 59802), (77, 59838), (86, 59889), (94, 59928), (95, 59931), (103, 59985), (104, 59988), (109, 60021), (111, 60030), (120, 60087), (122, 60096), (129, 60159), (139, 60261),

Gene: Brownie5_66 Start: 56210, Stop: 56863, Start Num: 48

Candidate Starts for Brownie5_66:

(6, 55856), (9, 55880), (13, 55919), (40, 56150), (Start: 48 @56210 has 30 MA's), (Start: 51 @56216 has 12 MA's), (67, 56264), (71, 56291), (76, 56321), (84, 56381), (90, 56405), (98, 56447), (100, 56453), (101, 56459), (103, 56483), (117, 56573), (132, 56729),

Gene: Buckeye_70 Start: 58402, Stop: 59109, Start Num: 49

Candidate Starts for Buckeye_70:

(Start: 49 @58402 has 257 MA's), (72, 58492), (74, 58501), (75, 58507), (79, 58543), (80, 58549), (83, 58564), (93, 58618), (94, 58621), (98, 58642), (102, 58657), (103, 58678), (117, 58768), (124, 58816),

Gene: Burr_70 Start: 57333, Stop: 58028, Start Num: 49

Candidate Starts for Burr_70:

(Start: 49 @57333 has 257 MA's), (72, 57423), (74, 57432), (75, 57438), (79, 57474), (80, 57480), (83, 57495), (93, 57549), (94, 57552), (98, 57573), (102, 57588), (103, 57609), (117, 57699), (124, 57747), (141, 57927),

Gene: CRB2_70 Start: 60958, Stop: 61668, Start Num: 49

Candidate Starts for CRB2_70:

(Start: 49 @60958 has 257 MA's), (Start: 53 @60970 has 6 MA's), (59, 60991), (65, 61012), (72, 61048), (73, 61051), (86, 61138), (95, 61180), (103, 61234), (104, 61237), (107, 61264), (122, 61345),

Gene: CaiB_65 Start: 52969, Stop: 53550, Start Num: 53

Candidate Starts for CaiB_65:

(3, 52576), (34, 52858), (36, 52867), (Start: 53 @52969 has 6 MA's), (71, 53038), (81, 53107), (84, 53128), (86, 53134), (89, 53149), (94, 53173), (98, 53194), (107, 53260), (108, 53263), (110, 53272), (112, 53293), (117, 53320), (119, 53326), (122, 53341), (129, 53404),

Gene: Calamitous_67 Start: 56104, Stop: 56751, Start Num: 51

Candidate Starts for Calamitous_67:

(6, 55744), (9, 55768), (13, 55807), (40, 56038), (Start: 48 @56098 has 30 MA's), (Start: 51 @56104 has 12 MA's), (67, 56152), (71, 56179), (76, 56209), (84, 56269), (90, 56293), (98, 56335), (100, 56341), (101, 56347), (103, 56371), (117, 56461), (132, 56617),

Gene: CamL_70 Start: 57635, Stop: 58330, Start Num: 49

Candidate Starts for CamL_70:

(Start: 49 @57635 has 257 MA's), (72, 57725), (74, 57734), (75, 57740), (79, 57776), (80, 57782), (83, 57797), (93, 57851), (94, 57854), (98, 57875), (102, 57890), (103, 57911), (117, 58001), (124, 58049), (141, 58229),

Gene: CampRoach_71 Start: 57742, Stop: 58440, Start Num: 49

Candidate Starts for CampRoach_71:

(Start: 49 @57742 has 257 MA's), (72, 57832), (74, 57841), (75, 57847), (79, 57883), (80, 57889), (83, 57904), (93, 57958), (94, 57961), (98, 57982), (102, 57997), (103, 58018), (117, 58108), (124, 58156),

Gene: Cannibal_71 Start: 57751, Stop: 58446, Start Num: 49

Candidate Starts for Cannibal_71:

(Start: 49 @57751 has 257 MA's), (72, 57841), (74, 57850), (75, 57856), (79, 57892), (80, 57898), (83, 57913), (93, 57967), (94, 57970), (98, 57991), (102, 58006), (103, 58027), (117, 58117), (124, 58165),

Gene: Carthage_70 Start: 57271, Stop: 57969, Start Num: 49

Candidate Starts for Carthage_70:

(Start: 49 @57271 has 257 MA's), (72, 57361), (74, 57370), (79, 57412), (80, 57418), (83, 57433), (93, 57487), (94, 57490), (98, 57511), (102, 57526), (103, 57547), (117, 57637), (124, 57685),

Gene: Casbah_71 Start: 58238, Stop: 58837, Start Num: 57

Candidate Starts for Casbah_71:

(Start: 57 @58238 has 45 MA's), (60, 58247), (61, 58253), (69, 58283), (73, 58307), (88, 58400), (92, 58424), (94, 58433), (101, 58466), (102, 58469), (104, 58493), (108, 58523), (117, 58580), (123, 58619),

Gene: ChaChing_71 Start: 57936, Stop: 58535, Start Num: 57

Candidate Starts for ChaChing_71:

(Start: 57 @57936 has 45 MA's), (60, 57945), (61, 57951), (69, 57981), (73, 58005), (88, 58098), (92, 58122), (94, 58131), (101, 58164), (102, 58167), (104, 58191), (108, 58221), (117, 58278), (123, 58317), (129, 58362),

Gene: Chaelin_71 Start: 57866, Stop: 58573, Start Num: 49

Candidate Starts for Chaelin_71:

(Start: 49 @57866 has 257 MA's), (72, 57956), (74, 57965), (75, 57971), (79, 58007), (80, 58013), (83, 58028), (93, 58082), (94, 58085), (98, 58106), (102, 58121), (103, 58142), (117, 58232), (124, 58280),

Gene: Chah_72 Start: 57454, Stop: 58161, Start Num: 49

Candidate Starts for Chah_72:

(Start: 49 @57454 has 257 MA's), (72, 57544), (74, 57553), (75, 57559), (79, 57595), (80, 57601), (83, 57616), (93, 57670), (94, 57673), (98, 57694), (102, 57709), (103, 57730), (117, 57820), (124, 57868),

Gene: Chandler_71 Start: 58698, Stop: 59297, Start Num: 57

Candidate Starts for Chandler_71:

(Start: 57 @58698 has 45 MA's), (61, 58713), (69, 58743), (73, 58767), (88, 58860), (92, 58884), (94, 58893), (101, 58926), (102, 58929), (104, 58953), (108, 58983), (117, 59040), (123, 59079),

Gene: Charles1_71 Start: 57641, Stop: 58348, Start Num: 49

Candidate Starts for Charles1_71:

(Start: 49 @57641 has 257 MA's), (72, 57731), (74, 57740), (79, 57782), (80, 57788), (83, 57803), (93, 57857), (94, 57860), (98, 57881), (102, 57896), (103, 57917), (117, 58007), (124, 58055),

Gene: CharlieGBrown_68 Start: 57257, Stop: 57955, Start Num: 49

Candidate Starts for CharlieGBrown_68:

(Start: 49 @57257 has 257 MA's), (72, 57347), (74, 57356), (75, 57362), (79, 57398), (80, 57404), (83, 57419), (93, 57473), (94, 57476), (98, 57497), (102, 57512), (103, 57533), (117, 57623), (124, 57671),

Gene: CharlottesWeb_60 Start: 49910, Stop: 50527, Start Num: 51

Candidate Starts for CharlottesWeb_60:

(2, 49511), (14, 49634), (16, 49646), (25, 49721), (42, 49865), (Start: 51 @49910 has 12 MA's), (54, 49925), (60, 49940), (63, 49952), (71, 49988), (81, 50057), (84, 50078), (88, 50090), (89, 50099), (94, 50123), (98, 50144), (107, 50210), (120, 50282), (122, 50291), (126, 50339), (129, 50354),

Gene: CheetO_69 Start: 57583, Stop: 58278, Start Num: 49

Candidate Starts for CheetO_69:

(Start: 49 @57583 has 257 MA's), (72, 57673), (74, 57682), (79, 57724), (80, 57730), (83, 57745), (93, 57799), (94, 57802), (98, 57823), (102, 57838), (103, 57859), (117, 57949), (124, 57997), (141, 58177),

Gene: Cher_70 Start: 57832, Stop: 58539, Start Num: 49

Candidate Starts for Cher_70:

(Start: 49 @57832 has 257 MA's), (72, 57922), (74, 57931), (75, 57937), (79, 57973), (80, 57979), (83, 57994), (93, 58048), (94, 58051), (98, 58072), (102, 58087), (103, 58108), (117, 58198), (124, 58246),

Gene: Childish_70 Start: 58030, Stop: 58737, Start Num: 49

Candidate Starts for Childish_70:

(Start: 49 @58030 has 257 MA's), (72, 58120), (74, 58129), (75, 58135), (79, 58171), (80, 58177), (83, 58192), (93, 58246), (94, 58249), (98, 58270), (102, 58285), (103, 58306), (117, 58396), (124, 58444), (141, 58624),

Gene: Chorkpop_71 Start: 57493, Stop: 58200, Start Num: 49

Candidate Starts for Chorkpop_71:

(Start: 49 @57493 has 257 MA's), (72, 57583), (74, 57592), (79, 57634), (80, 57640), (83, 57655), (93, 57709), (94, 57712), (98, 57733), (102, 57748), (103, 57769), (117, 57859), (124, 57907),

Gene: ChrisnMich_67 Start: 58458, Stop: 59045, Start Num: 56

Candidate Starts for ChrisnMich_67:

(30, 58323), (32, 58332), (Start: 56 @58458 has 32 MA's), (72, 58524), (73, 58527), (77, 58563), (86, 58614), (94, 58653), (95, 58656), (103, 58710), (104, 58713), (122, 58821), (129, 58884), (139, 58986),

Gene: Chunky_70 Start: 57200, Stop: 57898, Start Num: 49

Candidate Starts for Chunky_70:

(Start: 49 @57200 has 257 MA's), (72, 57290), (74, 57299), (79, 57341), (80, 57347), (83, 57362), (93, 57416), (94, 57419), (98, 57440), (102, 57455), (103, 57476), (117, 57566), (124, 57614),

Gene: Chute_70 Start: 57894, Stop: 58592, Start Num: 49

Candidate Starts for Chute_70:

(Start: 49 @57894 has 257 MA's), (72, 57984), (74, 57993), (75, 57999), (79, 58035), (80, 58041), (83, 58056), (93, 58110), (94, 58113), (98, 58134), (102, 58149), (103, 58170), (117, 58260), (124, 58308),

Gene: CloverMinnie_64 Start: 52132, Stop: 52713, Start Num: 53

Candidate Starts for CloverMinnie_64:

(3, 51739), (34, 52021), (36, 52030), (Start: 53 @52132 has 6 MA's), (71, 52201), (81, 52270), (84, 52291), (86, 52297), (89, 52312), (94, 52336), (98, 52357), (107, 52423), (108, 52426), (110, 52435), (117, 52483), (119, 52489), (122, 52504), (129, 52567),

Gene: Cobra_70 Start: 57863, Stop: 58570, Start Num: 49

Candidate Starts for Cobra_70:

(Start: 49 @57863 has 257 MA's), (72, 57953), (74, 57962), (75, 57968), (79, 58004), (80, 58010), (83, 58025), (93, 58079), (94, 58082), (98, 58103), (102, 58118), (103, 58139), (117, 58229), (124, 58277),

Gene: Coffee_66 Start: 56202, Stop: 56855, Start Num: 48

Candidate Starts for Coffee_66:

(6, 55848), (9, 55872), (13, 55911), (40, 56142), (Start: 48 @56202 has 30 MA's), (Start: 51 @56208 has 12 MA's), (67, 56256), (71, 56283), (76, 56313), (84, 56373), (90, 56397), (98, 56439), (100, 56445), (101, 56451), (103, 56475), (117, 56565), (132, 56721),

Gene: Colbert_68 Start: 56922, Stop: 57620, Start Num: 49

Candidate Starts for Colbert_68:

(Start: 49 @56922 has 257 MA's), (72, 57012), (74, 57021), (79, 57063), (80, 57069), (83, 57084), (93, 57138), (94, 57141), (98, 57162), (102, 57177), (103, 57198), (117, 57288),

Gene: Coletti_72 Start: 58394, Stop: 59092, Start Num: 49

Candidate Starts for Coletti_72:

(Start: 49 @58394 has 257 MA's), (72, 58484), (74, 58493), (75, 58499), (79, 58535), (80, 58541), (83, 58556), (93, 58610), (94, 58613), (98, 58634), (102, 58649), (103, 58670), (117, 58760), (124, 58808),

Gene: Compostia_70 Start: 58319, Stop: 58918, Start Num: 57

Candidate Starts for Compostia_70:

(Start: 57 @58319 has 45 MA's), (60, 58328), (61, 58334), (69, 58364), (73, 58388), (88, 58481), (92, 58505), (94, 58514), (101, 58547), (102, 58550), (104, 58574), (108, 58604), (117, 58661),

Gene: Cooper_69 Start: 59149, Stop: 59742, Start Num: 56

Candidate Starts for Cooper_69:

(Start: 56 @59149 has 32 MA's), (72, 59215), (73, 59218), (79, 59266), (86, 59305), (87, 59308), (94, 59344), (95, 59347), (103, 59401), (104, 59404), (122, 59512), (126, 59560), (129, 59575),

Gene: Cornobble_68 Start: 57357, Stop: 58055, Start Num: 49

Candidate Starts for Cornobble_68:

(Start: 49 @57357 has 257 MA's), (72, 57447), (74, 57456), (79, 57498), (80, 57504), (83, 57519), (93, 57573), (94, 57576), (98, 57597), (102, 57612), (103, 57633), (117, 57723),

Gene: Corofin_71 Start: 57949, Stop: 58548, Start Num: 57

Candidate Starts for Corofin_71:

(Start: 57 @57949 has 45 MA's), (60, 57958), (61, 57964), (69, 57994), (73, 58018), (88, 58111), (92, 58135), (94, 58144), (101, 58177), (102, 58180), (104, 58204), (108, 58234), (117, 58291), (123, 58330), (129, 58375),

Gene: Cosmolli16_72 Start: 58211, Stop: 58915, Start Num: 49

Candidate Starts for Cosmolli16_72:

(Start: 49 @58211 has 257 MA's), (72, 58301), (74, 58310), (75, 58316), (79, 58352), (80, 58358), (83, 58373), (93, 58427), (94, 58430), (98, 58451), (102, 58466), (103, 58487), (117, 58577), (124, 58625), (141, 58805),

Gene: Craff_73 Start: 58266, Stop: 58961, Start Num: 49

Candidate Starts for Craff_73:

(Start: 49 @58266 has 257 MA's), (72, 58356), (74, 58365), (75, 58371), (79, 58407), (80, 58413), (83, 58428), (93, 58482), (94, 58485), (98, 58506), (102, 58521), (103, 58542), (117, 58632), (124, 58680), (141, 58860),

Gene: Crownjwl_68 Start: 57355, Stop: 58062, Start Num: 49

Candidate Starts for Crownjwl_68:

(Start: 49 @57355 has 257 MA's), (72, 57445), (74, 57454), (75, 57460), (79, 57496), (80, 57502), (83, 57517), (93, 57571), (94, 57574), (98, 57595), (102, 57610), (103, 57631), (117, 57721), (124, 57769),

Gene: DaddyDaniels_73 Start: 57987, Stop: 58682, Start Num: 49

Candidate Starts for DaddyDaniels_73:

(Start: 49 @57987 has 257 MA's), (72, 58077), (74, 58086), (75, 58092), (79, 58128), (80, 58134), (83, 58149), (93, 58203), (94, 58206), (98, 58227), (102, 58242), (103, 58263), (117, 58353), (124, 58401), (141, 58581),

Gene: Daffy_69 Start: 57478, Stop: 58185, Start Num: 49

Candidate Starts for Daffy_69:

(Start: 49 @57478 has 257 MA's), (72, 57568), (74, 57577), (79, 57619), (80, 57625), (83, 57640), (93, 57694), (94, 57697), (98, 57718), (102, 57733), (103, 57754), (117, 57844), (124, 57892),

Gene: Daisy_70 Start: 57482, Stop: 58081, Start Num: 57

Candidate Starts for Daisy_70:

(Start: 57 @57482 has 45 MA's), (60, 57491), (61, 57497), (69, 57527), (73, 57551), (88, 57644), (92, 57668), (94, 57677), (101, 57710), (102, 57713), (104, 57737), (108, 57767), (117, 57824), (129, 57908),

Gene: Daka_72 Start: 57848, Stop: 58543, Start Num: 49

Candidate Starts for Daka_72:

(Start: 49 @57848 has 257 MA's), (72, 57938), (74, 57947), (79, 57989), (80, 57995), (83, 58010), (93, 58064), (94, 58067), (98, 58088), (102, 58103), (103, 58124), (117, 58214), (124, 58262), (141, 58442),

Gene: Dati_67 Start: 57648, Stop: 58355, Start Num: 49

Candidate Starts for Dati_67:

(Start: 49 @57648 has 257 MA's), (72, 57738), (74, 57747), (75, 57753), (79, 57789), (80, 57795), (83, 57810), (93, 57864), (94, 57867), (98, 57888), (102, 57903), (103, 57924), (117, 58014), (124, 58062),

Gene: Deenasa_71 Start: 58785, Stop: 59384, Start Num: 57

Candidate Starts for Deenasa_71:

(Start: 57 @58785 has 45 MA's), (61, 58800), (69, 58830), (73, 58854), (88, 58947), (92, 58971), (94, 58980), (101, 59013), (102, 59016), (104, 59040), (108, 59070), (117, 59127), (129, 59211),

Gene: DelRivs_68 Start: 57303, Stop: 58001, Start Num: 49

Candidate Starts for DelRivs_68:

(Start: 49 @57303 has 257 MA's), (72, 57393), (74, 57402), (75, 57408), (79, 57444), (80, 57450), (83, 57465), (93, 57519), (94, 57522), (98, 57543), (102, 57558), (103, 57579), (117, 57669), (124, 57717),

Gene: Derpp_70 Start: 57403, Stop: 58107, Start Num: 49

Candidate Starts for Derpp_70:

(Start: 49 @57403 has 257 MA's), (72, 57493), (74, 57502), (79, 57544), (80, 57550), (83, 57565), (93, 57619), (94, 57622), (98, 57643), (102, 57658), (103, 57679), (117, 57769), (124, 57817), (141, 57997),

Gene: Devonte_70 Start: 57561, Stop: 58160, Start Num: 57

Candidate Starts for Devonte_70:

(Start: 57 @57561 has 45 MA's), (60, 57570), (61, 57576), (69, 57606), (73, 57630), (88, 57723), (92, 57747), (94, 57756), (101, 57789), (102, 57792), (104, 57816), (108, 57846), (117, 57903), (123, 57942), (129, 57987),

Gene: Dice_70 Start: 57331, Stop: 58026, Start Num: 49

Candidate Starts for Dice_70:

(Start: 49 @57331 has 257 MA's), (72, 57421), (74, 57430), (75, 57436), (79, 57472), (80, 57478), (83, 57493), (93, 57547), (94, 57550), (98, 57571), (102, 57586), (103, 57607), (117, 57697), (124, 57745), (141, 57925),

Gene: DigitDog_71 Start: 59261, Stop: 59914, Start Num: 56

Candidate Starts for DigitDog_71:

(15, 59000), (33, 59147), (Start: 56 @59261 has 32 MA's), (80, 59384), (83, 59399), (97, 59471), (101, 59489), (103, 59513), (104, 59516), (105, 59528), (114, 59585), (115, 59597), (118, 59606), (122, 59624), (131, 59732),

Gene: Dingo_67 Start: 56876, Stop: 57583, Start Num: 49

Candidate Starts for Dingo_67:

(Start: 49 @56876 has 257 MA's), (72, 56966), (74, 56975), (79, 57017), (80, 57023), (83, 57038), (93, 57092), (94, 57095), (98, 57116), (102, 57131), (103, 57152), (117, 57242), (124, 57290), (141, 57470),

Gene: Dione_68 Start: 57065, Stop: 57760, Start Num: 49

Candidate Starts for Dione_68:

(Start: 49 @57065 has 257 MA's), (72, 57155), (74, 57164), (75, 57170), (79, 57206), (80, 57212), (83, 57227), (93, 57281), (94, 57284), (98, 57305), (102, 57320), (103, 57341), (117, 57431), (124, 57479), (141, 57659),

Gene: DirtJuice_70 Start: 57639, Stop: 58334, Start Num: 49

Candidate Starts for DirtJuice_70:

(Start: 49 @57639 has 257 MA's), (72, 57729), (74, 57738), (79, 57780), (80, 57786), (83, 57801), (93, 57855), (94, 57858), (98, 57879), (102, 57894), (103, 57915), (117, 58005), (124, 58053), (141, 58233),

Gene: Doddsville_68 Start: 57366, Stop: 58073, Start Num: 49

Candidate Starts for Doddsville_68:

(Start: 49 @57366 has 257 MA's), (72, 57456), (74, 57465), (75, 57471), (79, 57507), (80, 57513), (83, 57528), (93, 57582), (94, 57585), (98, 57606), (102, 57621), (103, 57642), (117, 57732), (124, 57780),

Gene: DoesntMatter_67 Start: 57355, Stop: 58050, Start Num: 49

Candidate Starts for DoesntMatter_67:

(Start: 49 @57355 has 257 MA's), (72, 57445), (74, 57454), (75, 57460), (79, 57496), (80, 57502), (83, 57517), (93, 57571), (94, 57574), (98, 57595), (102, 57610), (103, 57631), (117, 57721), (124, 57769), (141, 57949),

Gene: DonSanchon_66 Start: 57001, Stop: 57708, Start Num: 49

Candidate Starts for DonSanchon_66:

(Start: 49 @57001 has 257 MA's), (72, 57091), (74, 57100), (75, 57106), (79, 57142), (80, 57148), (83, 57163), (93, 57217), (94, 57220), (98, 57241), (102, 57256), (103, 57277), (117, 57367), (124, 57415),

Gene: Donny_72 Start: 59155, Stop: 59805, Start Num: 56

Candidate Starts for Donny_72:

(33, 59041), (Start: 56 @59155 has 32 MA's), (80, 59278), (83, 59293), (84, 59305), (96, 59359), (97, 59365), (101, 59383), (103, 59407), (104, 59410), (114, 59479), (115, 59491), (118, 59500), (122, 59518), (131, 59626),

Gene: DuchessDung_69 Start: 56882, Stop: 57589, Start Num: 49

Candidate Starts for DuchessDung_69:

(Start: 49 @56882 has 257 MA's), (72, 56972), (74, 56981), (75, 56987), (79, 57023), (80, 57029), (83, 57044), (93, 57098), (94, 57101), (98, 57122), (102, 57137), (103, 57158), (117, 57248),

Gene: Duggie_70 Start: 57629, Stop: 58327, Start Num: 49

Candidate Starts for Duggie_70:

(Start: 49 @57629 has 257 MA's), (72, 57719), (74, 57728), (79, 57770), (80, 57776), (83, 57791), (93, 57845), (94, 57848), (98, 57869), (102, 57884), (103, 57905), (117, 57995), (124, 58043),

Gene: Durga_72 Start: 58109, Stop: 58816, Start Num: 49

Candidate Starts for Durga_72:

(Start: 49 @58109 has 257 MA's), (72, 58199), (74, 58208), (75, 58214), (79, 58250), (80, 58256), (83, 58271), (93, 58325), (94, 58328), (98, 58349), (102, 58364), (103, 58385), (117, 58475), (124, 58523),

Gene: Eaglehorse_66 Start: 56088, Stop: 56741, Start Num: 48

Candidate Starts for Eaglehorse_66:

(6, 55734), (9, 55758), (13, 55797), (40, 56028), (Start: 48 @56088 has 30 MA's), (Start: 51 @56094 has 12 MA's), (67, 56142), (71, 56169), (76, 56199), (84, 56259), (90, 56283), (98, 56325), (100, 56331), (101, 56337), (103, 56361), (117, 56451), (132, 56607),

Gene: EastView9101_72 Start: 58862, Stop: 59512, Start Num: 56

Candidate Starts for EastView9101_72:

(33, 58748), (Start: 56 @58862 has 32 MA's), (80, 58985), (83, 59000), (84, 59012), (96, 59066), (97, 59072), (101, 59090), (103, 59114), (104, 59117), (114, 59186), (115, 59198), (118, 59207), (122, 59225), (131, 59333),

Gene: Emiris_71 Start: 58018, Stop: 58725, Start Num: 49

Candidate Starts for Emiris_71:

(Start: 49 @58018 has 257 MA's), (72, 58108), (74, 58117), (75, 58123), (79, 58159), (80, 58165), (83, 58180), (93, 58234), (94, 58237), (98, 58258), (102, 58273), (103, 58294), (117, 58384),

Gene: EmpTee_69 Start: 57575, Stop: 58270, Start Num: 49

Candidate Starts for EmpTee_69:

(Start: 49 @57575 has 257 MA's), (72, 57665), (74, 57674), (75, 57680), (79, 57716), (80, 57722), (83, 57737), (93, 57791), (94, 57794), (98, 57815), (102, 57830), (103, 57851), (117, 57941), (124, 57989), (141, 58169),

Gene: Eremos_69 Start: 57540, Stop: 58247, Start Num: 49

Candidate Starts for Eremos_69:

(Start: 49 @57540 has 257 MA's), (72, 57630), (74, 57639), (75, 57645), (79, 57681), (80, 57687), (83, 57702), (93, 57756), (94, 57759), (98, 57780), (102, 57795), (103, 57816), (117, 57906), (124, 57954),

Gene: Etaye_69 Start: 58191, Stop: 58898, Start Num: 49

Candidate Starts for Etaye_69:

(Start: 49 @58191 has 257 MA's), (72, 58281), (74, 58290), (75, 58296), (79, 58332), (80, 58338), (83, 58353), (93, 58407), (94, 58410), (98, 58431), (102, 58446), (103, 58467), (117, 58557), (124, 58605),

Gene: Eugenia_71 Start: 58148, Stop: 58855, Start Num: 49

Candidate Starts for Eugenia_71:

(Start: 49 @58148 has 257 MA's), (72, 58238), (74, 58247), (75, 58253), (79, 58289), (80, 58295), (83, 58310), (93, 58364), (94, 58367), (98, 58388), (102, 58403), (103, 58424), (117, 58514), (124, 58562),

Gene: Evaa_63 Start: 50521, Stop: 51108, Start Num: 57

Candidate Starts for Evaa_63:

(Start: 57 @50521 has 45 MA's), (59, 50527), (71, 50578), (74, 50593), (80, 50641), (89, 50689), (94, 50713), (98, 50734), (102, 50749), (103, 50770), (109, 50806), (127, 50932),

Gene: Fang_71 Start: 57851, Stop: 58558, Start Num: 49

Candidate Starts for Fang_71:

(Start: 49 @57851 has 257 MA's), (72, 57941), (74, 57950), (75, 57956), (79, 57992), (80, 57998), (83, 58013), (93, 58067), (94, 58070), (98, 58091), (102, 58106), (103, 58127), (117, 58217), (124, 58265),

Gene: Faze9_65 Start: 56233, Stop: 56880, Start Num: 51

Candidate Starts for Faze9_65:

(6, 55873), (9, 55897), (13, 55936), (40, 56167), (Start: 48 @56227 has 30 MA's), (Start: 51 @56233 has 12 MA's), (67, 56281), (71, 56308), (76, 56338), (84, 56398), (90, 56422), (98, 56464), (100, 56470), (101, 56476), (103, 56500), (117, 56590), (132, 56746),

Gene: FluffyNinja_71 Start: 57757, Stop: 58455, Start Num: 49

Candidate Starts for FluffyNinja_71:

(Start: 49 @57757 has 257 MA's), (72, 57847), (74, 57856), (79, 57898), (80, 57904), (83, 57919), (93, 57973), (94, 57976), (98, 57997), (102, 58012), (103, 58033), (117, 58123), (124, 58171), (137, 58324),

Gene: Fortunato_68 Start: 59509, Stop: 60096, Start Num: 56

Candidate Starts for Fortunato_68:

(Start: 56 @59509 has 32 MA's), (65, 59539), (72, 59575), (73, 59578), (77, 59614), (86, 59665), (94, 59704), (95, 59707), (103, 59761), (104, 59764), (109, 59797), (111, 59806), (120, 59863), (122, 59872), (129, 59935), (139, 60037),

Gene: Fozzie_68 Start: 57856, Stop: 58563, Start Num: 49

Candidate Starts for Fozzie_68:

(Start: 49 @57856 has 257 MA's), (72, 57946), (74, 57955), (75, 57961), (79, 57997), (80, 58003), (83, 58018), (93, 58072), (94, 58075), (98, 58096), (102, 58111), (103, 58132), (117, 58222), (124, 58270),

Gene: Frankicide_69 Start: 57539, Stop: 58237, Start Num: 49

Candidate Starts for Frankicide_69:

(Start: 49 @57539 has 257 MA's), (72, 57629), (74, 57638), (79, 57680), (80, 57686), (83, 57701), (93, 57755), (94, 57758), (98, 57779), (102, 57794), (103, 57815), (117, 57905), (124, 57953), (141, 58133),

Gene: Frederick_67 Start: 59456, Stop: 60043, Start Num: 56

Candidate Starts for Frederick_67:

(4, 59051), (7, 59084), (17, 59177), (19, 59195), (22, 59225), (23, 59228), (30, 59321), (32, 59330), (Start: 56 @59456 has 32 MA's), (72, 59522), (73, 59525), (77, 59561), (86, 59612), (94, 59651), (95, 59654), (103, 59708), (104, 59711), (122, 59819), (126, 59867), (129, 59882), (139, 59984),

Gene: FrenchFry_67 Start: 56213, Stop: 56866, Start Num: 48

Candidate Starts for FrenchFry_67:

(6, 55859), (9, 55883), (13, 55922), (40, 56153), (Start: 48 @56213 has 30 MA's), (Start: 51 @56219 has 12 MA's), (67, 56267), (71, 56294), (76, 56324), (84, 56384), (90, 56408), (98, 56450), (100, 56456), (101, 56462), (103, 56486), (117, 56576), (132, 56732),

Gene: Fresco_64 Start: 51329, Stop: 51925, Start Num: 51

Candidate Starts for Fresco_64:

(11, 51029), (14, 51053), (16, 51065), (25, 51140), (42, 51284), (Start: 51 @51329 has 12 MA's), (54, 51344), (60, 51359), (63, 51371), (71, 51407), (80, 51470), (84, 51497), (88, 51509), (89, 51518), (94, 51542), (107, 51629), (120, 51701), (122, 51710), (126, 51758), (129, 51773),

Gene: Freya_67 Start: 57025, Stop: 57729, Start Num: 49

Candidate Starts for Freya_67:

(Start: 49 @57025 has 257 MA's), (72, 57115), (74, 57124), (75, 57130), (79, 57166), (80, 57172), (83, 57187), (93, 57241), (94, 57244), (98, 57265), (102, 57280), (103, 57301), (117, 57391), (124, 57439), (141, 57619),

Gene: FriarPreacher_68 Start: 57402, Stop: 58097, Start Num: 49

Candidate Starts for FriarPreacher_68:

(Start: 49 @57402 has 257 MA's), (72, 57492), (74, 57501), (75, 57507), (79, 57543), (80, 57549), (83, 57564), (93, 57618), (94, 57621), (98, 57642), (102, 57657), (103, 57678), (117, 57768), (124, 57816), (141, 57996),

Gene: Fringe_74 Start: 58200, Stop: 58907, Start Num: 49

Candidate Starts for Fringe_74:

(Start: 49 @58200 has 257 MA's), (72, 58290), (74, 58299), (75, 58305), (79, 58341), (80, 58347), (83, 58362), (93, 58416), (94, 58419), (98, 58440), (102, 58455), (103, 58476), (117, 58566), (124, 58614), (137, 58767),

Gene: FugateOSU_70 Start: 58355, Stop: 59053, Start Num: 49

Candidate Starts for FugateOSU_70:

(Start: 49 @58355 has 257 MA's), (72, 58445), (74, 58454), (75, 58460), (79, 58496), (80, 58502), (83, 58517), (93, 58571), (94, 58574), (98, 58595), (102, 58610), (103, 58631), (117, 58721), (124, 58769),

Gene: Funsized_71 Start: 61219, Stop: 61962, Start Num: 47

Candidate Starts for Funsized_71:

(Start: 47 @61219 has 1 MA's), (Start: 49 @61225 has 257 MA's), (72, 61312), (73, 61315), (80, 61369), (86, 61402), (87, 61405), (95, 61444), (103, 61498), (104, 61501), (120, 61600), (129, 61672), (135, 61747),

Gene: Gadget_72 Start: 58249, Stop: 58848, Start Num: 57

Candidate Starts for Gadget_72:

(Start: 57 @58249 has 45 MA's), (61, 58264), (69, 58294), (73, 58318), (88, 58411), (92, 58435), (94, 58444), (101, 58477), (102, 58480), (104, 58504), (108, 58534), (117, 58591), (123, 58630),

Gene: Gareth_70 Start: 57851, Stop: 58558, Start Num: 49

Candidate Starts for Gareth_70:

(Start: 49 @57851 has 257 MA's), (72, 57941), (74, 57950), (75, 57956), (79, 57992), (80, 57998), (83, 58013), (93, 58067), (94, 58070), (98, 58091), (102, 58106), (103, 58127), (117, 58217), (124, 58265),

Gene: GeneCoco_71 Start: 58025, Stop: 58723, Start Num: 49

Candidate Starts for GeneCoco_71:

(Start: 49 @58025 has 257 MA's), (72, 58115), (74, 58124), (75, 58130), (79, 58166), (80, 58172), (83, 58187), (93, 58241), (94, 58244), (98, 58265), (102, 58280), (103, 58301), (117, 58391), (124, 58439),

Gene: Gervas_72 Start: 58343, Stop: 58942, Start Num: 57

Candidate Starts for Gervas_72:

(Start: 57 @58343 has 45 MA's), (60, 58352), (61, 58358), (69, 58388), (73, 58412), (88, 58505), (92, 58529), (94, 58538), (101, 58571), (102, 58574), (104, 58598), (108, 58628), (117, 58685), (123, 58724), (129, 58769),

Gene: Giraffe_70 Start: 57846, Stop: 58553, Start Num: 49

Candidate Starts for Giraffe_70:

(Start: 49 @57846 has 257 MA's), (72, 57936), (74, 57945), (75, 57951), (79, 57987), (80, 57993), (83, 58008), (93, 58062), (94, 58065), (98, 58086), (102, 58101), (103, 58122), (117, 58212), (124, 58260),

Gene: Glass_67 Start: 56215, Stop: 56868, Start Num: 48

Candidate Starts for Glass_67:

(6, 55861), (9, 55885), (13, 55924), (40, 56155), (Start: 48 @56215 has 30 MA's), (Start: 51 @56221 has 12 MA's), (67, 56269), (71, 56296), (76, 56326), (84, 56386), (90, 56410), (98, 56452), (100, 56458), (101, 56464), (103, 56488), (117, 56578), (132, 56734),

Gene: GlenHope_72 Start: 57909, Stop: 58508, Start Num: 57

Candidate Starts for GlenHope_72:

(Start: 57 @57909 has 45 MA's), (60, 57918), (61, 57924), (69, 57954), (73, 57978), (88, 58071), (92, 58095), (94, 58104), (101, 58137), (102, 58140), (104, 58164), (108, 58194), (117, 58251),

Gene: Godines_67 Start: 56471, Stop: 57118, Start Num: 48

Candidate Starts for Godines_67:

(6, 56117), (9, 56141), (10, 56159), (13, 56180), (40, 56411), (Start: 48 @56471 has 30 MA's), (Start: 51 @56477 has 12 MA's), (67, 56519), (71, 56546), (76, 56576), (82, 56621), (84, 56636), (90, 56660), (98, 56702), (100, 56708), (101, 56714), (103, 56738), (117, 56828), (132, 56984),

Gene: Gophee_71 Start: 57858, Stop: 58553, Start Num: 49

Candidate Starts for Gophee_71:

(Start: 49 @57858 has 257 MA's), (72, 57948), (74, 57957), (79, 57999), (80, 58005), (83, 58020), (93, 58074), (94, 58077), (98, 58098), (102, 58113), (103, 58134), (117, 58224), (124, 58272), (141, 58452),

Gene: Grand2040_68 Start: 57824, Stop: 58531, Start Num: 49

Candidate Starts for Grand2040_68:

(Start: 49 @57824 has 257 MA's), (72, 57914), (74, 57923), (75, 57929), (79, 57965), (80, 57971), (83, 57986), (93, 58040), (94, 58043), (98, 58064), (102, 58079), (103, 58100), (117, 58190), (124, 58238),

Gene: Gwilliam_71 Start: 58215, Stop: 58922, Start Num: 49

Candidate Starts for Gwilliam_71:

(Start: 49 @58215 has 257 MA's), (72, 58305), (74, 58314), (75, 58320), (79, 58356), (80, 58362), (83, 58377), (93, 58431), (94, 58434), (98, 58455), (102, 58470), (103, 58491), (117, 58581), (124, 58629),

Gene: Gyarad_0069 Start: 57171, Stop: 57878, Start Num: 49

Candidate Starts for Gyarad_0069:

(Start: 49 @57171 has 257 MA's), (72, 57261), (74, 57270), (75, 57276), (79, 57312), (80, 57318), (83, 57333), (93, 57387), (94, 57390), (98, 57411), (102, 57426), (103, 57447), (117, 57537), (124, 57585),

Gene: HSavage_68 Start: 57373, Stop: 58068, Start Num: 49

Candidate Starts for HSavage_68:

(Start: 49 @57373 has 257 MA's), (72, 57463), (74, 57472), (79, 57514), (80, 57520), (83, 57535), (93, 57589), (94, 57592), (98, 57613), (102, 57628), (103, 57649), (117, 57739), (124, 57787), (141, 57967),

Gene: Haimas_68 Start: 57302, Stop: 58009, Start Num: 49

Candidate Starts for Haimas_68:

(Start: 49 @57302 has 257 MA's), (72, 57392), (74, 57401), (75, 57407), (79, 57443), (80, 57449), (83, 57464), (93, 57518), (94, 57521), (98, 57542), (102, 57557), (103, 57578), (117, 57668), (124, 57716),

Gene: Haleema_69 Start: 57392, Stop: 58099, Start Num: 49

Candidate Starts for Haleema_69:

(Start: 49 @57392 has 257 MA's), (72, 57482), (74, 57491), (75, 57497), (79, 57533), (80, 57539), (83, 57554), (93, 57608), (94, 57611), (98, 57632), (102, 57647), (103, 57668), (117, 57758), (124, 57806),

Gene: Halfpint_71 Start: 57660, Stop: 58259, Start Num: 57

Candidate Starts for Halfpint_71:

(Start: 57 @57660 has 45 MA's), (60, 57669), (61, 57675), (69, 57705), (73, 57729), (88, 57822), (92, 57846), (94, 57855), (101, 57888), (102, 57891), (104, 57915), (108, 57945), (117, 58002), (123, 58041), (129, 58086),

Gene: Hamish_67 Start: 57408, Stop: 58106, Start Num: 49

Candidate Starts for Hamish_67:

(Start: 49 @57408 has 257 MA's), (72, 57498), (74, 57507), (79, 57549), (80, 57555), (83, 57570), (93, 57624), (94, 57627), (98, 57648), (102, 57663), (103, 57684), (117, 57774), (124, 57822),

Gene: Hangman_68 Start: 59655, Stop: 60242, Start Num: 56

Candidate Starts for Hangman_68:

(30, 59520), (32, 59529), (35, 59541), (Start: 56 @59655 has 32 MA's), (65, 59685), (72, 59721), (73, 59724), (77, 59760), (86, 59811), (94, 59850), (95, 59853), (103, 59907), (104, 59910), (109, 59943), (111, 59952), (120, 60009), (122, 60018), (129, 60081), (139, 60183),

Gene: Hartsy_69 Start: 57504, Stop: 58211, Start Num: 49

Candidate Starts for Hartsy_69:

(Start: 49 @57504 has 257 MA's), (72, 57594), (74, 57603), (75, 57609), (79, 57645), (80, 57651), (83, 57666), (93, 57720), (94, 57723), (98, 57744), (102, 57759), (103, 57780), (117, 57870), (124, 57918),

Gene: Harvey_67 Start: 57331, Stop: 58038, Start Num: 49

Candidate Starts for Harvey_67:

(Start: 49 @57331 has 257 MA's), (72, 57421), (74, 57430), (75, 57436), (79, 57472), (80, 57478), (83, 57493), (93, 57547), (94, 57550), (98, 57571), (102, 57586), (103, 57607), (117, 57697), (124, 57745),

Gene: HarveySr_70 Start: 57468, Stop: 58064, Start Num: 57

Candidate Starts for HarveySr_70:

(Start: 57 @57468 has 45 MA's), (60, 57477), (69, 57510), (73, 57534), (88, 57627), (92, 57651), (94, 57660), (101, 57693), (102, 57696), (104, 57720), (108, 57750), (117, 57807), (123, 57846), (129, 57891),

Gene: Heath_67 Start: 59282, Stop: 59869, Start Num: 56

Candidate Starts for Heath_67:

(30, 59147), (32, 59156), (35, 59168), (Start: 56 @59282 has 32 MA's), (65, 59312), (72, 59348), (73, 59351), (77, 59387), (86, 59438), (94, 59477), (95, 59480), (103, 59534), (104, 59537), (120, 59636), (122, 59645), (129, 59708), (139, 59810),

Gene: Heathcliff_71 Start: 57876, Stop: 58475, Start Num: 57

Candidate Starts for Heathcliff_71:

(Start: 57 @57876 has 45 MA's), (60, 57885), (61, 57891), (73, 57945), (88, 58038), (92, 58062), (94, 58071), (101, 58104), (102, 58107), (104, 58131), (108, 58161), (117, 58218), (123, 58257),

Gene: Hedgerow_66 Start: 56165, Stop: 56818, Start Num: 48

Candidate Starts for Hedgerow_66:

(9, 55835), (13, 55874), (40, 56105), (Start: 48 @56165 has 30 MA's), (Start: 51 @56171 has 12 MA's), (67, 56219), (71, 56246), (76, 56276), (84, 56336), (90, 56360), (98, 56402), (100, 56408), (101, 56414), (103, 56438), (117, 56528), (132, 56684),

Gene: Held_68 Start: 57305, Stop: 58012, Start Num: 49

Candidate Starts for Held_68:

(Start: 49 @57305 has 257 MA's), (72, 57395), (74, 57404), (75, 57410), (79, 57446), (80, 57452), (83, 57467), (93, 57521), (94, 57524), (98, 57545), (102, 57560), (103, 57581), (117, 57671), (124, 57719),

Gene: HenryJackson_71 Start: 58019, Stop: 58726, Start Num: 49

Candidate Starts for HenryJackson_71:

(Start: 49 @58019 has 257 MA's), (72, 58109), (74, 58118), (75, 58124), (79, 58160), (80, 58166), (83, 58181), (93, 58235), (94, 58238), (98, 58259), (102, 58274), (103, 58295), (117, 58385), (124, 58433),

Gene: Hertubise_70 Start: 57785, Stop: 58492, Start Num: 49

Candidate Starts for Hertubise_70:

(Start: 49 @57785 has 257 MA's), (72, 57875), (74, 57884), (75, 57890), (79, 57926), (80, 57932), (83, 57947), (93, 58001), (94, 58004), (98, 58025), (102, 58040), (103, 58061), (117, 58151), (124, 58199),

Gene: Hetaeria_70 Start: 57725, Stop: 58423, Start Num: 49

Candidate Starts for Hetaeria_70:

(Start: 49 @57725 has 257 MA's), (72, 57815), (74, 57824), (75, 57830), (79, 57866), (80, 57872), (83, 57887), (93, 57941), (94, 57944), (98, 57965), (102, 57980), (103, 58001), (117, 58091), (124, 58139),

Gene: HighStump_71 Start: 57808, Stop: 58515, Start Num: 49

Candidate Starts for HighStump_71:

(Start: 49 @57808 has 257 MA's), (72, 57898), (74, 57907), (75, 57913), (79, 57949), (80, 57955), (83, 57970), (93, 58024), (94, 58027), (98, 58048), (102, 58063), (103, 58084), (117, 58174), (124, 58222),

Gene: Hocus_68 Start: 57323, Stop: 58030, Start Num: 49

Candidate Starts for Hocus_68:

(Start: 49 @57323 has 257 MA's), (72, 57413), (74, 57422), (75, 57428), (79, 57464), (80, 57470), (83, 57485), (93, 57539), (94, 57542), (98, 57563), (102, 57578), (103, 57599), (117, 57689), (124, 57737),

Gene: Holeinone_66 Start: 56073, Stop: 56723, Start Num: 48

Candidate Starts for Holeinone_66:

(6, 55719), (9, 55743), (13, 55782), (40, 56013), (Start: 48 @56073 has 30 MA's), (Start: 51 @56079 has 12 MA's), (67, 56124), (71, 56151), (76, 56181), (84, 56241), (90, 56265), (98, 56307), (100, 56313), (101, 56319), (103, 56343), (117, 56433), (132, 56589),

Gene: Horchata_67 Start: 57326, Stop: 58033, Start Num: 49

Candidate Starts for Horchata_67:

(Start: 49 @57326 has 257 MA's), (72, 57416), (74, 57425), (75, 57431), (79, 57467), (80, 57473), (83, 57488), (93, 57542), (94, 57545), (98, 57566), (102, 57581), (103, 57602), (117, 57692), (124, 57740),

Gene: Hosp_064 Start: 55830, Stop: 56528, Start Num: 56

Candidate Starts for Hosp_064:

(Start: 56 @55830 has 32 MA's), (65, 55860), (72, 55896), (73, 55899), (81, 55959), (84, 55980), (94, 56025), (95, 56028), (103, 56082), (104, 56085), (106, 56109), (117, 56172), (139, 56370),

Gene: Hydro_68 Start: 59593, Stop: 60180, Start Num: 56

Candidate Starts for Hydro_68:

(30, 59458), (32, 59467), (35, 59479), (Start: 56 @59593 has 32 MA's), (65, 59623), (72, 59659), (73, 59662), (77, 59698), (86, 59749), (94, 59788), (95, 59791), (103, 59845), (104, 59848), (109, 59881), (111, 59890), (120, 59947), (122, 59956), (129, 60019), (139, 60121),

Gene: ImtiyazSitla_71 Start: 57709, Stop: 58416, Start Num: 49

Candidate Starts for ImtiyazSitla_71:

(Start: 49 @57709 has 257 MA's), (72, 57799), (74, 57808), (75, 57814), (79, 57850), (80, 57856), (83, 57871), (93, 57925), (94, 57928), (98, 57949), (102, 57964), (103, 57985), (117, 58075), (124, 58123),

Gene: Imvubu_68 Start: 57987, Stop: 58691, Start Num: 49

Candidate Starts for Imvubu_68:

(Start: 49 @57987 has 257 MA's), (70, 58059), (72, 58077), (73, 58080), (74, 58086), (86, 58167), (87, 58170), (95, 58209), (103, 58263), (104, 58266), (129, 58437),

Gene: Inchworm_71 Start: 57702, Stop: 58397, Start Num: 49

Candidate Starts for Inchworm_71:

(Start: 49 @57702 has 257 MA's), (72, 57792), (74, 57801), (75, 57807), (79, 57843), (80, 57849), (83, 57864), (93, 57918), (94, 57921), (98, 57942), (102, 57957), (103, 57978), (117, 58068), (124, 58116),

Gene: Indlovu_68 Start: 59161, Stop: 59871, Start Num: 53

Candidate Starts for Indlovu_68:

(18, 58894), (27, 59002), (28, 59011), (Start: 53 @59161 has 6 MA's), (59, 59182), (73, 59242), (80, 59296), (83, 59311), (84, 59323), (87, 59332), (103, 59425), (104, 59428), (117, 59515), (120, 59527),

Gene: Inverness_68 Start: 57335, Stop: 58033, Start Num: 49

Candidate Starts for Inverness_68:

(Start: 49 @57335 has 257 MA's), (72, 57425), (74, 57434), (79, 57476), (80, 57482), (83, 57497), (93, 57551), (94, 57554), (98, 57575), (102, 57590), (103, 57611), (117, 57701), (124, 57749),

Gene: Iridoclysis_69 Start: 57619, Stop: 58314, Start Num: 49

Candidate Starts for Iridoclysis_69:

(Start: 49 @57619 has 257 MA's), (72, 57709), (74, 57718), (75, 57724), (79, 57760), (80, 57766), (83, 57781), (93, 57835), (94, 57838), (98, 57859), (102, 57874), (103, 57895), (117, 57985), (124, 58033), (141, 58213),

Gene: IsaacEli_72 Start: 58008, Stop: 58706, Start Num: 49

Candidate Starts for IsaacEli_72:

(Start: 49 @58008 has 257 MA's), (72, 58098), (74, 58107), (75, 58113), (79, 58149), (80, 58155), (83, 58170), (93, 58224), (94, 58227), (98, 58248), (102, 58263), (103, 58284), (117, 58374),

Gene: ItsyBitsy1_65 Start: 56303, Stop: 56956, Start Num: 48

Candidate Starts for ItsyBitsy1_65:

(40, 56243), (Start: 48 @56303 has 30 MA's), (Start: 51 @56309 has 12 MA's), (67, 56357), (71, 56384), (76, 56414), (84, 56474), (90, 56498), (98, 56540), (100, 56546), (101, 56552), (103, 56576), (117, 56666), (132, 56822),

Gene: JAMaL_67 Start: 59483, Stop: 60070, Start Num: 56

Candidate Starts for JAMaL_67:

(4, 59078), (7, 59111), (17, 59204), (19, 59222), (22, 59252), (30, 59348), (32, 59357), (Start: 56 @59483 has 32 MA's), (72, 59549), (73, 59552), (77, 59588), (86, 59639), (94, 59678), (95, 59681), (103, 59735), (104, 59738), (122, 59846), (126, 59894), (129, 59909), (139, 60011),

Gene: JDog_69 Start: 57855, Stop: 58550, Start Num: 49

Candidate Starts for JDog_69:

(Start: 49 @57855 has 257 MA's), (72, 57945), (74, 57954), (75, 57960), (79, 57996), (80, 58002), (83, 58017), (93, 58071), (94, 58074), (98, 58095), (102, 58110), (103, 58131), (117, 58221), (124, 58269),

Gene: JacAttac_70 Start: 57329, Stop: 58024, Start Num: 49

Candidate Starts for JacAttac_70:

(Start: 49 @57329 has 257 MA's), (72, 57419), (74, 57428), (75, 57434), (79, 57470), (80, 57476), (83, 57491), (93, 57545), (94, 57548), (98, 57569), (102, 57584), (103, 57605), (117, 57695), (124, 57743), (141, 57923),

Gene: Jackstina_67 Start: 57801, Stop: 58400, Start Num: 57

Candidate Starts for Jackstina_67:

(Start: 57 @57801 has 45 MA's), (61, 57816), (69, 57846), (73, 57870), (88, 57963), (92, 57987), (94, 57996), (101, 58029), (102, 58032), (104, 58056), (108, 58086), (117, 58143),

Gene: JaguarMi_68 Start: 60746, Stop: 61336, Start Num: 56

Candidate Starts for JaguarMi_68:

(30, 60611), (32, 60620), (Start: 56 @60746 has 32 MA's), (65, 60776), (72, 60812), (73, 60815), (77, 60851), (79, 60863), (86, 60902), (94, 60941), (95, 60944), (103, 60998), (104, 61001), (120, 61100), (122, 61109), (129, 61172), (139, 61274),

Gene: JakeO_71 Start: 57580, Stop: 58278, Start Num: 49

Candidate Starts for JakeO_71:

(Start: 49 @57580 has 257 MA's), (72, 57670), (74, 57679), (75, 57685), (79, 57721), (80, 57727), (83, 57742), (93, 57796), (94, 57799), (98, 57820), (102, 57835), (103, 57856), (117, 57946), (124, 57994),

Gene: JangoPhett_68 Start: 57670, Stop: 58365, Start Num: 49

Candidate Starts for JangoPhett_68:

(Start: 49 @57670 has 257 MA's), (72, 57760), (74, 57769), (75, 57775), (79, 57811), (80, 57817), (83, 57832), (93, 57886), (94, 57889), (98, 57910), (102, 57925), (103, 57946), (117, 58036), (124, 58084),

(141, 58264),

Gene: Jillium_71 Start: 58014, Stop: 58721, Start Num: 49

Candidate Starts for Jillium_71:

(Start: 49 @58014 has 257 MA's), (72, 58104), (74, 58113), (75, 58119), (79, 58155), (80, 58161), (83, 58176), (93, 58230), (94, 58233), (98, 58254), (102, 58269), (103, 58290), (117, 58380), (124, 58428),

Gene: Jiminy_70 Start: 57416, Stop: 58114, Start Num: 49

Candidate Starts for Jiminy_70:

(Start: 49 @57416 has 257 MA's), (72, 57506), (74, 57515), (75, 57521), (79, 57557), (80, 57563), (83, 57578), (93, 57632), (94, 57635), (98, 57656), (102, 57671), (103, 57692), (117, 57782), (124, 57830),

Gene: Jiraiya_73 Start: 57612, Stop: 58310, Start Num: 49

Candidate Starts for Jiraiya_73:

(Start: 49 @57612 has 257 MA's), (72, 57702), (74, 57711), (79, 57753), (80, 57759), (83, 57774), (93, 57828), (94, 57831), (98, 57852), (102, 57867), (103, 57888), (117, 57978), (124, 58026),

Gene: Jolie1_066 Start: 57958, Stop: 58656, Start Num: 56

Candidate Starts for Jolie1_066:

(Start: 56 @57958 has 32 MA's), (65, 57988), (72, 58024), (73, 58027), (81, 58087), (84, 58108), (94, 58153), (95, 58156), (103, 58210), (104, 58213), (106, 58237), (117, 58300), (139, 58498),

Gene: KLucky39_68 Start: 57216, Stop: 57923, Start Num: 49

Candidate Starts for KLucky39_68:

(Start: 49 @57216 has 257 MA's), (72, 57306), (74, 57315), (79, 57357), (80, 57363), (83, 57378), (93, 57432), (94, 57435), (98, 57456), (102, 57471), (103, 57492), (117, 57582), (124, 57630),

Gene: Kahve_71 Start: 58016, Stop: 58723, Start Num: 49

Candidate Starts for Kahve_71:

(Start: 49 @58016 has 257 MA's), (72, 58106), (74, 58115), (75, 58121), (79, 58157), (80, 58163), (83, 58178), (93, 58232), (94, 58235), (98, 58256), (102, 58271), (103, 58292), (117, 58382), (124, 58430),

Gene: Kailash_68 Start: 57726, Stop: 58424, Start Num: 49

Candidate Starts for Kailash_68:

(Start: 49 @57726 has 257 MA's), (72, 57816), (74, 57825), (75, 57831), (79, 57867), (80, 57873), (83, 57888), (93, 57942), (94, 57945), (98, 57966), (102, 57981), (103, 58002), (117, 58092), (124, 58140),

Gene: Kaleb_67 Start: 56220, Stop: 56873, Start Num: 48

Candidate Starts for Kaleb_67:

(6, 55866), (9, 55890), (13, 55929), (40, 56160), (Start: 48 @56220 has 30 MA's), (Start: 51 @56226 has 12 MA's), (67, 56274), (71, 56301), (76, 56331), (84, 56391), (90, 56415), (98, 56457), (100, 56463), (101, 56469), (103, 56493), (117, 56583), (132, 56739), (140, 56808),

Gene: Kamiyu_71 Start: 57878, Stop: 58477, Start Num: 57

Candidate Starts for Kamiyu_71:

(Start: 57 @57878 has 45 MA's), (60, 57887), (61, 57893), (69, 57923), (73, 57947), (88, 58040), (92, 58064), (94, 58073), (101, 58106), (102, 58109), (104, 58133), (108, 58163), (117, 58220), (123, 58259),

Gene: Katniss_72 Start: 57456, Stop: 58163, Start Num: 49

Candidate Starts for Katniss_72:

(Start: 49 @57456 has 257 MA's), (72, 57546), (74, 57555), (75, 57561), (79, 57597), (80, 57603), (83, 57618), (93, 57672), (94, 57675), (98, 57696), (102, 57711), (103, 57732), (117, 57822), (124, 57870),

Gene: KayaCho_66 Start: 57943, Stop: 58623, Start Num: 56

Candidate Starts for KayaCho_66:

(Start: 56 @57943 has 32 MA's), (65, 57973), (72, 58009), (73, 58012), (80, 58066), (84, 58093), (95, 58141), (103, 58195), (104, 58198), (106, 58222), (107, 58225), (117, 58285), (133, 58435), (139, 58468),

Gene: Keitherie_73 Start: 58078, Stop: 58785, Start Num: 49

Candidate Starts for Keitherie_73:

(Start: 49 @58078 has 257 MA's), (72, 58168), (74, 58177), (75, 58183), (79, 58219), (80, 58225), (83, 58240), (93, 58294), (94, 58297), (98, 58318), (102, 58333), (103, 58354), (117, 58444), (124, 58492),

Gene: Kheth_66 Start: 56132, Stop: 56785, Start Num: 48

Candidate Starts for Kheth_66:

(6, 55778), (9, 55802), (13, 55841), (40, 56072), (Start: 48 @56132 has 30 MA's), (Start: 51 @56138 has 12 MA's), (67, 56186), (71, 56213), (76, 56243), (84, 56303), (90, 56327), (98, 56369), (100, 56375), (101, 56381), (103, 56405), (117, 56495), (132, 56651),

Gene: Kikipoo_72 Start: 58008, Stop: 58706, Start Num: 49

Candidate Starts for Kikipoo_72:

(Start: 49 @58008 has 257 MA's), (72, 58098), (74, 58107), (75, 58113), (79, 58149), (80, 58155), (83, 58170), (93, 58224), (94, 58227), (98, 58248), (102, 58263), (103, 58284), (117, 58374),

Gene: Kimbrough_71 Start: 57914, Stop: 58609, Start Num: 49

Candidate Starts for Kimbrough_71:

(Start: 49 @57914 has 257 MA's), (72, 58004), (74, 58013), (75, 58019), (79, 58055), (80, 58061), (83, 58076), (93, 58130), (94, 58133), (98, 58154), (102, 58169), (103, 58190), (117, 58280), (124, 58328), (141, 58508),

Gene: KingTut_61 Start: 54063, Stop: 54770, Start Num: 49

Candidate Starts for KingTut_61:

(Start: 49 @54063 has 257 MA's), (72, 54153), (74, 54162), (75, 54168), (79, 54204), (80, 54210), (83, 54225), (93, 54279), (94, 54282), (98, 54303), (102, 54318), (103, 54339), (117, 54429), (124, 54477),

Gene: KingVeVeVe_68 Start: 56866, Stop: 57573, Start Num: 49

Candidate Starts for KingVeVeVe_68:

(Start: 49 @56866 has 257 MA's), (72, 56956), (74, 56965), (79, 57007), (80, 57013), (83, 57028), (93, 57082), (94, 57085), (98, 57106), (102, 57121), (103, 57142), (117, 57232), (124, 57280),

Gene: KlimbOn_69 Start: 57343, Stop: 58041, Start Num: 49

Candidate Starts for KlimbOn_69:

(Start: 49 @57343 has 257 MA's), (72, 57433), (74, 57442), (75, 57448), (79, 57484), (80, 57490), (83, 57505), (93, 57559), (94, 57562), (98, 57583), (102, 57598), (103, 57619), (117, 57709), (124, 57757),

Gene: Kloppinator_70 Start: 57524, Stop: 58222, Start Num: 49

Candidate Starts for Kloppinator_70:

(Start: 49 @57524 has 257 MA's), (72, 57614), (74, 57623), (79, 57665), (80, 57671), (83, 57686), (93, 57740), (94, 57743), (98, 57764), (102, 57779), (103, 57800), (117, 57890), (124, 57938),

Gene: Knocker_71 Start: 60395, Stop: 61171, Start Num: 48

Candidate Starts for Knocker_71:

(Start: 48 @60395 has 30 MA's), (72, 60485), (73, 60488), (80, 60542), (86, 60575), (87, 60578), (94, 60614), (95, 60617), (103, 60671), (104, 60674), (117, 60761), (120, 60773), (135, 60947),

Gene: Kronus_71 Start: 58974, Stop: 59573, Start Num: 57

Candidate Starts for Kronus_71:

(Start: 57 @58974 has 45 MA's), (60, 58983), (61, 58989), (69, 59019), (73, 59043), (88, 59136), (92, 59160), (94, 59169), (101, 59202), (102, 59205), (104, 59229), (108, 59259), (117, 59316),

Gene: Kwadwo_69 Start: 57323, Stop: 58030, Start Num: 49

Candidate Starts for Kwadwo_69:

(Start: 49 @57323 has 257 MA's), (72, 57413), (74, 57422), (75, 57428), (79, 57464), (80, 57470), (83, 57485), (93, 57539), (94, 57542), (98, 57563), (102, 57578), (103, 57599), (117, 57689), (124, 57737),

Gene: Kwksand96_71 Start: 57590, Stop: 58297, Start Num: 49

Candidate Starts for Kwksand96_71:

(Start: 49 @57590 has 257 MA's), (72, 57680), (74, 57689), (75, 57695), (79, 57731), (80, 57737), (83, 57752), (93, 57806), (94, 57809), (98, 57830), (102, 57845), (103, 57866), (117, 57956), (124, 58004),

Gene: Labeouficaum_70 Start: 57403, Stop: 58107, Start Num: 49

Candidate Starts for Labeouficaum_70:

(Start: 49 @57403 has 257 MA's), (72, 57493), (74, 57502), (79, 57544), (80, 57550), (83, 57565), (93, 57619), (94, 57622), (98, 57643), (102, 57658), (103, 57679), (117, 57769), (124, 57817), (141, 57997),

Gene: Lars_67 Start: 56193, Stop: 56846, Start Num: 48

Candidate Starts for Lars_67:

(6, 55839), (9, 55863), (13, 55902), (40, 56133), (Start: 48 @56193 has 30 MA's), (Start: 51 @56199 has 12 MA's), (67, 56247), (71, 56274), (76, 56304), (84, 56364), (90, 56388), (98, 56430), (100, 56436), (101, 56442), (103, 56466), (117, 56556), (132, 56712),

Gene: LasagnaCat_71 Start: 57714, Stop: 58409, Start Num: 49

Candidate Starts for LasagnaCat_71:

(Start: 49 @57714 has 257 MA's), (72, 57804), (74, 57813), (75, 57819), (79, 57855), (80, 57861), (83, 57876), (93, 57930), (94, 57933), (98, 57954), (102, 57969), (103, 57990), (117, 58080), (124, 58128),

Gene: Lasso_69 Start: 57553, Stop: 58260, Start Num: 49

Candidate Starts for Lasso_69:

(Start: 49 @57553 has 257 MA's), (72, 57643), (74, 57652), (75, 57658), (79, 57694), (80, 57700), (83, 57715), (93, 57769), (94, 57772), (98, 57793), (102, 57808), (103, 57829), (117, 57919), (124, 57967),

Gene: Laurie_66 Start: 55873, Stop: 56523, Start Num: 48

Candidate Starts for Laurie_66:

(40, 55813), (Start: 48 @55873 has 30 MA's), (Start: 51 @55879 has 12 MA's), (67, 55924), (71, 55951), (76, 55981), (82, 56026), (84, 56041), (90, 56065), (98, 56107), (100, 56113), (101, 56119), (103, 56143), (117, 56233), (132, 56389),

Gene: LeeLot_69 Start: 57909, Stop: 58616, Start Num: 49

Candidate Starts for LeeLot_69:

(Start: 49 @57909 has 257 MA's), (72, 57999), (74, 58008), (75, 58014), (79, 58050), (80, 58056), (83, 58071), (93, 58125), (94, 58128), (98, 58149), (102, 58164), (103, 58185), (117, 58275), (124, 58323),

Gene: Lego3393_68 Start: 58035, Stop: 58730, Start Num: 49

Candidate Starts for Lego3393_68:

(Start: 49 @58035 has 257 MA's), (72, 58125), (74, 58134), (75, 58140), (79, 58176), (80, 58182), (83, 58197), (93, 58251), (94, 58254), (98, 58275), (102, 58290), (103, 58311), (117, 58401), (124, 58449),

(141, 58629),

Gene: Legolas_71 Start: 57648, Stop: 58355, Start Num: 49

Candidate Starts for Legolas_71:

(Start: 49 @57648 has 257 MA's), (72, 57738), (74, 57747), (75, 57753), (79, 57789), (80, 57795), (83, 57810), (93, 57864), (94, 57867), (98, 57888), (102, 57903), (103, 57924), (117, 58014), (124, 58062),

Gene: LeiMonet_72 Start: 57786, Stop: 58493, Start Num: 49

Candidate Starts for LeiMonet_72:

(Start: 49 @57786 has 257 MA's), (72, 57876), (74, 57885), (75, 57891), (79, 57927), (80, 57933), (83, 57948), (93, 58002), (94, 58005), (98, 58026), (102, 58041), (103, 58062), (117, 58152), (124, 58200),

Gene: LemonSlice_70 Start: 57300, Stop: 58007, Start Num: 49

Candidate Starts for LemonSlice_70:

(Start: 49 @57300 has 257 MA's), (72, 57390), (74, 57399), (75, 57405), (79, 57441), (80, 57447), (83, 57462), (93, 57516), (94, 57519), (98, 57540), (102, 57555), (103, 57576), (117, 57666), (124, 57714),

Gene: Lephleur_66 Start: 56058, Stop: 56708, Start Num: 48

Candidate Starts for Lephleur_66:

(6, 55704), (9, 55728), (13, 55767), (40, 55998), (Start: 48 @56058 has 30 MA's), (Start: 51 @56064 has 12 MA's), (67, 56109), (71, 56136), (76, 56166), (84, 56226), (90, 56250), (98, 56292), (100, 56298), (101, 56304), (103, 56328), (117, 56418), (132, 56574),

Gene: LestyG_69 Start: 57404, Stop: 58003, Start Num: 57

Candidate Starts for LestyG_69:

(Start: 57 @57404 has 45 MA's), (61, 57419), (69, 57449), (73, 57473), (88, 57566), (92, 57590), (94, 57599), (101, 57632), (102, 57635), (104, 57659), (108, 57689), (117, 57746), (123, 57785), (129, 57830),

Gene: Ligma_64 Start: 51329, Stop: 51919, Start Num: 51

Candidate Starts for Ligma_64:

(Start: 51 @51329 has 12 MA's), (54, 51338), (71, 51401), (80, 51464), (84, 51491), (88, 51503), (89, 51512), (94, 51536), (107, 51623), (120, 51695), (122, 51704), (126, 51752), (129, 51767),

Gene: LilMcDreamy_69 Start: 59015, Stop: 59680, Start Num: 56

Candidate Starts for LilMcDreamy_69:

(Start: 56 @59015 has 32 MA's), (80, 59138), (83, 59153), (84, 59165), (97, 59225), (98, 59231), (101, 59243), (103, 59267), (104, 59270), (115, 59351), (118, 59360), (131, 59492),

Gene: LittleMunchkin_65 Start: 54116, Stop: 54709, Start Num: 52

Candidate Starts for LittleMunchkin_65:

(Start: 52 @54116 has 2 MA's), (71, 54185), (80, 54248), (84, 54275), (86, 54281), (89, 54296), (94, 54320), (98, 54341), (107, 54407), (117, 54467), (119, 54473), (120, 54479), (122, 54488), (126, 54536), (129, 54551),

Gene: LizLemon_66 Start: 56220, Stop: 56873, Start Num: 48

Candidate Starts for LizLemon_66:

(6, 55866), (9, 55890), (13, 55929), (40, 56160), (Start: 48 @56220 has 30 MA's), (Start: 51 @56226 has 12 MA's), (67, 56274), (71, 56301), (76, 56331), (84, 56391), (90, 56415), (98, 56457), (100, 56463), (101, 56469), (103, 56493), (117, 56583), (132, 56739),

Gene: Lolalove_69 Start: 59664, Stop: 60251, Start Num: 56

Candidate Starts for Lolalove_69:

(30, 59529), (32, 59538), (Start: 56 @59664 has 32 MA's), (65, 59694), (72, 59730), (73, 59733), (77, 59769), (86, 59820), (94, 59859), (95, 59862), (103, 59916), (104, 59919), (109, 59952), (111, 59961), (120, 60018), (122, 60027), (129, 60090), (139, 60192),

Gene: Longacauda_71 Start: 57689, Stop: 58396, Start Num: 49

Candidate Starts for Longacauda_71:

(Start: 49 @57689 has 257 MA's), (72, 57779), (74, 57788), (75, 57794), (79, 57830), (80, 57836), (83, 57851), (93, 57905), (94, 57908), (98, 57929), (102, 57944), (103, 57965), (117, 58055), (124, 58103),

Gene: Lopsy_67 Start: 57013, Stop: 57711, Start Num: 49

Candidate Starts for Lopsy_67:

(Start: 49 @57013 has 257 MA's), (72, 57103), (74, 57112), (79, 57154), (80, 57160), (83, 57175), (93, 57229), (94, 57232), (98, 57253), (102, 57268), (103, 57289), (117, 57379), (124, 57427),

Gene: LostAndPhound_69 Start: 57853, Stop: 58560, Start Num: 49

Candidate Starts for LostAndPhound_69:

(Start: 49 @57853 has 257 MA's), (72, 57943), (74, 57952), (75, 57958), (79, 57994), (80, 58000), (83, 58015), (93, 58069), (94, 58072), (98, 58093), (102, 58108), (103, 58129), (117, 58219), (124, 58267),

Gene: LuckyMarjie_67 Start: 57074, Stop: 57769, Start Num: 49

Candidate Starts for LuckyMarjie_67:

(Start: 49 @57074 has 257 MA's), (72, 57164), (74, 57173), (75, 57179), (79, 57215), (80, 57221), (83, 57236), (93, 57290), (94, 57293), (98, 57314), (102, 57329), (103, 57350), (117, 57440), (124, 57488), (141, 57668),

Gene: Lulumae_67 Start: 57058, Stop: 57753, Start Num: 49

Candidate Starts for Lulumae_67:

(Start: 49 @57058 has 257 MA's), (72, 57148), (74, 57157), (75, 57163), (79, 57199), (80, 57205), (83, 57220), (93, 57274), (94, 57277), (98, 57298), (102, 57313), (103, 57334), (117, 57424), (124, 57472), (141, 57652),

Gene: Lulwa_68 Start: 56677, Stop: 57384, Start Num: 49

Candidate Starts for Lulwa_68:

(Start: 49 @56677 has 257 MA's), (72, 56767), (74, 56776), (79, 56818), (80, 56824), (83, 56839), (93, 56893), (94, 56896), (98, 56917), (102, 56932), (103, 56953), (117, 57043),

Gene: Lumine_71 Start: 57512, Stop: 58207, Start Num: 49

Candidate Starts for Lumine_71:

(Start: 49 @57512 has 257 MA's), (72, 57602), (74, 57611), (75, 57617), (79, 57653), (80, 57659), (83, 57674), (93, 57728), (94, 57731), (98, 57752), (102, 57767), (103, 57788), (117, 57878), (124, 57926), (141, 58106),

Gene: MRabcd_70 Start: 57796, Stop: 58491, Start Num: 49

Candidate Starts for MRabcd_70:

(Start: 49 @57796 has 257 MA's), (72, 57886), (74, 57895), (75, 57901), (79, 57937), (80, 57943), (83, 57958), (93, 58012), (94, 58015), (98, 58036), (102, 58051), (103, 58072), (117, 58162), (124, 58210),

Gene: Mag7_68 Start: 57270, Stop: 57968, Start Num: 49

Candidate Starts for Mag7_68:

(Start: 49 @57270 has 257 MA's), (72, 57360), (74, 57369), (75, 57375), (79, 57411), (80, 57417), (83, 57432), (93, 57486), (94, 57489), (98, 57510), (102, 57525), (103, 57546), (117, 57636), (124, 57684),

Gene: Magic8_69 Start: 57634, Stop: 58332, Start Num: 49

Candidate Starts for Magic8_69:

(Start: 49 @57634 has 257 MA's), (72, 57724), (74, 57733), (75, 57739), (79, 57775), (80, 57781), (83, 57796), (93, 57850), (94, 57853), (98, 57874), (102, 57889), (103, 57910), (117, 58000), (124, 58048),

Gene: Magpie_65 Start: 59349, Stop: 59936, Start Num: 56

Candidate Starts for Magpie_65:

(Start: 56 @59349 has 32 MA's), (72, 59415), (73, 59418), (77, 59454), (86, 59505), (94, 59544), (95, 59547), (103, 59601), (104, 59604), (111, 59646), (122, 59712), (129, 59775), (139, 59877),

Gene: MakoManhole_63 Start: 51487, Stop: 52053, Start Num: 53

Candidate Starts for MakoManhole_63:

(3, 51094), (34, 51376), (36, 51385), (Start: 53 @51487 has 6 MA's), (71, 51556), (81, 51625), (84, 51646), (86, 51652), (89, 51667), (94, 51691), (98, 51712), (107, 51778), (108, 51781), (110, 51790), (117, 51838), (119, 51844), (122, 51859), (129, 51922),

Gene: Mana_69 Start: 57469, Stop: 58176, Start Num: 49

Candidate Starts for Mana_69:

(Start: 49 @57469 has 257 MA's), (72, 57559), (74, 57568), (75, 57574), (79, 57610), (80, 57616), (83, 57631), (93, 57685), (94, 57688), (98, 57709), (102, 57724), (103, 57745), (117, 57835), (124, 57883),

Gene: Manad_69 Start: 57625, Stop: 58323, Start Num: 49

Candidate Starts for Manad_69:

(Start: 49 @57625 has 257 MA's), (72, 57715), (74, 57724), (75, 57730), (79, 57766), (80, 57772), (83, 57787), (93, 57841), (94, 57844), (98, 57865), (102, 57880), (103, 57901), (117, 57991), (124, 58039),

Gene: Mariokart_60 Start: 50195, Stop: 50812, Start Num: 51

Candidate Starts for Mariokart_60:

(2, 49796), (14, 49919), (16, 49931), (25, 50006), (42, 50150), (Start: 51 @50195 has 12 MA's), (54, 50210), (60, 50225), (63, 50237), (71, 50273), (81, 50342), (84, 50363), (89, 50384), (94, 50408), (98, 50429), (107, 50495), (120, 50567), (122, 50576), (126, 50624), (129, 50639),

Gene: Marley1013_72 Start: 58826, Stop: 59425, Start Num: 57

Candidate Starts for Marley1013_72:

(Start: 57 @58826 has 45 MA's), (60, 58835), (61, 58841), (69, 58871), (73, 58895), (88, 58988), (92, 59012), (94, 59021), (101, 59054), (102, 59057), (104, 59081), (108, 59111), (117, 59168),

Gene: Maru_70 Start: 57908, Stop: 58615, Start Num: 49

Candidate Starts for Maru_70:

(Start: 49 @57908 has 257 MA's), (72, 57998), (74, 58007), (75, 58013), (79, 58049), (80, 58055), (83, 58070), (93, 58124), (94, 58127), (98, 58148), (102, 58163), (103, 58184), (117, 58274), (124, 58322),

Gene: Maskar_71 Start: 57709, Stop: 58416, Start Num: 49

Candidate Starts for Maskar_71:

(Start: 49 @57709 has 257 MA's), (72, 57799), (74, 57808), (75, 57814), (79, 57850), (80, 57856), (83, 57871), (93, 57925), (94, 57928), (98, 57949), (102, 57964), (103, 57985), (117, 58075), (124, 58123),

Gene: MasterPo_67 Start: 56090, Stop: 56740, Start Num: 48

Candidate Starts for MasterPo_67:

(6, 55736), (9, 55760), (13, 55799), (40, 56030), (Start: 48 @56090 has 30 MA's), (Start: 51 @56096 has 12 MA's), (67, 56141), (71, 56168), (76, 56198), (84, 56258), (90, 56282), (98, 56324), (100, 56330), (101, 56336), (103, 56360), (117, 56450), (132, 56606),

Gene: Matalotodo_70 Start: 58308, Stop: 59015, Start Num: 49

Candidate Starts for Matalotodo_70:

(Start: 49 @58308 has 257 MA's), (72, 58398), (74, 58407), (75, 58413), (79, 58449), (80, 58455), (83, 58470), (93, 58524), (94, 58527), (98, 58548), (102, 58563), (103, 58584), (117, 58674), (124, 58722),

Gene: Mcshane_69 Start: 57336, Stop: 58031, Start Num: 49

Candidate Starts for Mcshane_69:

(Start: 49 @57336 has 257 MA's), (72, 57426), (74, 57435), (75, 57441), (79, 57477), (80, 57483), (83, 57498), (93, 57552), (94, 57555), (98, 57576), (102, 57591), (103, 57612), (117, 57702), (124, 57750), (141, 57930),

Gene: Mecca_70 Start: 57901, Stop: 58596, Start Num: 49

Candidate Starts for Mecca_70:

(Start: 49 @57901 has 257 MA's), (72, 57991), (74, 58000), (75, 58006), (79, 58042), (80, 58048), (83, 58063), (93, 58117), (94, 58120), (98, 58141), (102, 58156), (103, 58177), (117, 58267), (124, 58315), (141, 58495),

Gene: Megamind20_70 Start: 57324, Stop: 58016, Start Num: 49

Candidate Starts for Megamind20_70:

(Start: 49 @57324 has 257 MA's), (72, 57414), (74, 57423), (75, 57429), (79, 57465), (80, 57471), (83, 57486), (93, 57540), (94, 57543), (98, 57564), (102, 57579), (103, 57600), (117, 57690), (124, 57738),

Gene: Megatron_71 Start: 57995, Stop: 58702, Start Num: 49

Candidate Starts for Megatron_71:

(Start: 49 @57995 has 257 MA's), (72, 58085), (74, 58094), (75, 58100), (79, 58136), (80, 58142), (83, 58157), (93, 58211), (94, 58214), (98, 58235), (102, 58250), (103, 58271), (117, 58361), (124, 58409),

Gene: Melc17_67 Start: 57936, Stop: 58643, Start Num: 49

Candidate Starts for Melc17_67:

(Start: 49 @57936 has 257 MA's), (72, 58026), (74, 58035), (75, 58041), (79, 58077), (80, 58083), (83, 58098), (93, 58152), (94, 58155), (98, 58176), (102, 58191), (103, 58212), (117, 58302), (124, 58350),

Gene: MelsMeow_69 Start: 57588, Stop: 58295, Start Num: 49

Candidate Starts for MelsMeow_69:

(Start: 49 @57588 has 257 MA's), (72, 57678), (74, 57687), (75, 57693), (79, 57729), (80, 57735), (83, 57750), (93, 57804), (94, 57807), (98, 57828), (102, 57843), (103, 57864), (117, 57954), (124, 58002),

Gene: Mesh1_71 Start: 58044, Stop: 58751, Start Num: 49

Candidate Starts for Mesh1_71:

(Start: 49 @58044 has 257 MA's), (72, 58134), (74, 58143), (75, 58149), (79, 58185), (80, 58191), (83, 58206), (93, 58260), (94, 58263), (98, 58284), (102, 58299), (103, 58320), (117, 58410), (124, 58458),

Gene: MichaelPhcott_68 Start: 57267, Stop: 57965, Start Num: 49

Candidate Starts for MichaelPhcott_68:

(Start: 49 @57267 has 257 MA's), (72, 57357), (74, 57366), (75, 57372), (79, 57408), (80, 57414), (83, 57429), (93, 57483), (94, 57486), (98, 57507), (102, 57522), (103, 57543), (117, 57633), (124, 57681),

Gene: Mikota_67 Start: 56864, Stop: 57571, Start Num: 49

Candidate Starts for Mikota_67:

(Start: 49 @56864 has 257 MA's), (72, 56954), (74, 56963), (79, 57005), (80, 57011), (83, 57026), (93, 57080), (94, 57083), (98, 57104), (102, 57119), (103, 57140), (117, 57230), (124, 57278), (141, 57458),

Gene: MiniBoss_67 Start: 56639, Stop: 57346, Start Num: 49

Candidate Starts for MiniBoss_67:

(Start: 49 @56639 has 257 MA's), (72, 56729), (74, 56738), (75, 56744), (79, 56780), (80, 56786), (83, 56801), (93, 56855), (94, 56858), (98, 56879), (102, 56894), (103, 56915), (117, 57005), (124, 57053), (141, 57233),

Gene: MitKao_70 Start: 57478, Stop: 58185, Start Num: 49

Candidate Starts for MitKao_70:

(Start: 49 @57478 has 257 MA's), (72, 57568), (74, 57577), (79, 57619), (80, 57625), (83, 57640), (93, 57694), (94, 57697), (98, 57718), (102, 57733), (103, 57754), (117, 57844), (124, 57892),

Gene: Mithril_67 Start: 59663, Stop: 60250, Start Num: 56

Candidate Starts for Mithril_67:

(Start: 56 @59663 has 32 MA's), (65, 59693), (72, 59729), (73, 59732), (77, 59768), (86, 59819), (94, 59858), (95, 59861), (103, 59915), (104, 59918), (109, 59951), (111, 59960), (120, 60017), (122, 60026), (129, 60089), (139, 60191),

Gene: MmasiCarm_72 Start: 58329, Stop: 58928, Start Num: 57

Candidate Starts for MmasiCarm_72:

(Start: 57 @58329 has 45 MA's), (61, 58344), (73, 58398), (88, 58491), (92, 58515), (94, 58524), (101, 58557), (102, 58560), (104, 58584), (108, 58614), (117, 58671),

Gene: Morgushi_68 Start: 57293, Stop: 58000, Start Num: 49

Candidate Starts for Morgushi_68:

(Start: 49 @57293 has 257 MA's), (72, 57383), (74, 57392), (75, 57398), (79, 57434), (80, 57440), (83, 57455), (93, 57509), (94, 57512), (98, 57533), (102, 57548), (103, 57569), (117, 57659), (124, 57707),

Gene: Mortcellus_71 Start: 58991, Stop: 59590, Start Num: 57

Candidate Starts for Mortcellus_71:

(Start: 57 @58991 has 45 MA's), (61, 59006), (69, 59036), (73, 59060), (88, 59153), (92, 59177), (94, 59186), (101, 59219), (102, 59222), (104, 59246), (108, 59276), (117, 59333),

Gene: Morty_71 Start: 57886, Stop: 58593, Start Num: 49

Candidate Starts for Morty_71:

(Start: 49 @57886 has 257 MA's), (72, 57976), (74, 57985), (79, 58027), (80, 58033), (83, 58048), (93, 58102), (94, 58105), (98, 58126), (102, 58141), (103, 58162), (117, 58252),

Gene: Morty007_70 Start: 58826, Stop: 59425, Start Num: 57

Candidate Starts for Morty007_70:

(Start: 57 @58826 has 45 MA's), (60, 58835), (61, 58841), (69, 58871), (73, 58895), (88, 58988), (92, 59012), (94, 59021), (101, 59054), (102, 59057), (104, 59081), (108, 59111), (117, 59168),

Gene: Mosaic_68 Start: 57473, Stop: 58180, Start Num: 49

Candidate Starts for Mosaic_68:

(Start: 49 @57473 has 257 MA's), (72, 57563), (74, 57572), (75, 57578), (79, 57614), (80, 57620), (83, 57635), (93, 57689), (94, 57692), (98, 57713), (102, 57728), (103, 57749), (117, 57839), (124, 57887),

Gene: MossRose_65 Start: 52447, Stop: 53013, Start Num: 53

Candidate Starts for MossRose_65:

(3, 52054), (34, 52336), (36, 52345), (Start: 53 @52447 has 6 MA's), (71, 52516), (81, 52585), (84, 52606), (86, 52612), (89, 52627), (94, 52651), (98, 52672), (107, 52738), (108, 52741), (110, 52750), (117, 52798), (119, 52804), (122, 52819), (129, 52882),

Gene: MrPhizzler_69 Start: 57775, Stop: 58482, Start Num: 49

Candidate Starts for MrPhizzler_69:

(Start: 49 @57775 has 257 MA's), (72, 57865), (74, 57874), (79, 57916), (80, 57922), (83, 57937), (93, 57991), (94, 57994), (98, 58015), (102, 58030), (103, 58051), (117, 58141), (124, 58189),

Gene: Mudslide_67 Start: 59684, Stop: 60271, Start Num: 56

Candidate Starts for Mudslide_67:

(30, 59549), (32, 59558), (Start: 56 @59684 has 32 MA's), (72, 59750), (73, 59753), (77, 59789), (86, 59840), (94, 59879), (95, 59882), (103, 59936), (104, 59939), (111, 59981), (120, 60038), (122, 60047), (129, 60110),

Gene: Mulan_69 Start: 57533, Stop: 58228, Start Num: 49

Candidate Starts for Mulan_69:

(Start: 49 @57533 has 257 MA's), (72, 57623), (74, 57632), (75, 57638), (79, 57674), (80, 57680), (83, 57695), (93, 57749), (94, 57752), (98, 57773), (102, 57788), (103, 57809), (117, 57899), (124, 57947),

Gene: Murdoc_67 Start: 57582, Stop: 58289, Start Num: 49

Candidate Starts for Murdoc_67:

(Start: 49 @57582 has 257 MA's), (72, 57672), (74, 57681), (75, 57687), (79, 57723), (80, 57729), (83, 57744), (93, 57798), (94, 57801), (98, 57822), (102, 57837), (103, 57858), (117, 57948), (124, 57996),

Gene: Mutante_71 Start: 57492, Stop: 58187, Start Num: 49

Candidate Starts for Mutante_71:

(Start: 49 @57492 has 257 MA's), (72, 57582), (74, 57591), (75, 57597), (79, 57633), (80, 57639), (83, 57654), (93, 57708), (94, 57711), (98, 57732), (102, 57747), (103, 57768), (117, 57858), (124, 57906),

Gene: Mysterious_71 Start: 59187, Stop: 59828, Start Num: 56

Candidate Starts for Mysterious_71:

(Start: 56 @59187 has 32 MA's), (68, 59232), (80, 59310), (84, 59337), (96, 59391), (97, 59397), (101, 59415), (103, 59439), (104, 59442), (107, 59469), (111, 59484), (115, 59523), (118, 59532), (122, 59550), (123, 59568), (131, 59658),

Gene: NHagos_62 Start: 50884, Stop: 51486, Start Num: 45

Candidate Starts for NHagos_62:

(12, 50605), (24, 50707), (Start: 45 @50884 has 1 MA's), (64, 50944), (68, 50962), (74, 50992), (81, 51046), (84, 51067), (88, 51079), (89, 51088), (94, 51112), (98, 51133), (99, 51136), (108, 51202), (110, 51211), (122, 51280), (125, 51310), (128, 51334), (133, 51421),

Gene: Nacho_0073 Start: 58386, Stop: 59093, Start Num: 49

Candidate Starts for Nacho_0073:

(Start: 49 @58386 has 257 MA's), (72, 58476), (74, 58485), (79, 58527), (80, 58533), (83, 58548), (93, 58602), (94, 58605), (98, 58626), (102, 58641), (103, 58662), (117, 58752), (124, 58800),

Gene: Nanao_66 Start: 58479, Stop: 59066, Start Num: 56

Candidate Starts for Nanao_66:

(4, 58074), (8, 58116), (17, 58200), (19, 58218), (22, 58248), (30, 58344), (32, 58353), (Start: 56 @58479 has 32 MA's), (72, 58545), (73, 58548), (77, 58584), (86, 58635), (94, 58674), (95, 58677), (103, 58731), (104, 58734), (122, 58842), (129, 58905), (139, 59007),

Gene: Nangang_70 Start: 59260, Stop: 59910, Start Num: 56

Candidate Starts for Nangang_70:

(15, 58996), (33, 59146), (Start: 56 @59260 has 32 MA's), (68, 59302), (80, 59380), (83, 59395), (97, 59467), (101, 59485), (103, 59509), (104, 59512), (105, 59524), (114, 59581), (115, 59593), (116, 59596), (118, 59602), (122, 59620), (131, 59728),

Gene: Neos5_71 Start: 58288, Stop: 58887, Start Num: 57

Candidate Starts for Neos5_71:

(Start: 57 @58288 has 45 MA's), (60, 58297), (61, 58303), (73, 58357), (88, 58450), (92, 58474), (94, 58483), (101, 58516), (102, 58519), (104, 58543), (108, 58573), (117, 58630),

Gene: Newman_68 Start: 57663, Stop: 58361, Start Num: 49

Candidate Starts for Newman_68:

(Start: 49 @57663 has 257 MA's), (72, 57753), (74, 57762), (79, 57804), (80, 57810), (83, 57825), (93, 57879), (94, 57882), (98, 57903), (102, 57918), (103, 57939), (117, 58029), (124, 58077),

Gene: Nicole21_71 Start: 57628, Stop: 58323, Start Num: 49

Candidate Starts for Nicole21_71:

(Start: 49 @57628 has 257 MA's), (72, 57718), (74, 57727), (75, 57733), (79, 57769), (80, 57775), (83, 57790), (93, 57844), (94, 57847), (98, 57868), (102, 57883), (103, 57904), (117, 57994), (124, 58042), (141, 58222),

Gene: Nigel_65 Start: 58299, Stop: 58883, Start Num: 56

Candidate Starts for Nigel_65:

(Start: 56 @58299 has 32 MA's), (58, 58305), (65, 58329), (72, 58365), (73, 58368), (79, 58416), (86, 58455), (94, 58494), (95, 58497), (103, 58551), (104, 58554), (122, 58662), (129, 58725),

Gene: Nozo_71 Start: 58685, Stop: 59284, Start Num: 57

Candidate Starts for Nozo_71:

(Start: 57 @58685 has 45 MA's), (61, 58700), (69, 58730), (73, 58754), (88, 58847), (92, 58871), (94, 58880), (101, 58913), (102, 58916), (104, 58940), (108, 58970), (117, 59027), (129, 59111),

Gene: Numberten_69 Start: 57592, Stop: 58299, Start Num: 49

Candidate Starts for Numberten_69:

(Start: 49 @57592 has 257 MA's), (72, 57682), (74, 57691), (79, 57733), (80, 57739), (83, 57754), (93, 57808), (94, 57811), (98, 57832), (102, 57847), (103, 57868), (117, 57958),

Gene: Nyala_69 Start: 57346, Stop: 58041, Start Num: 49

Candidate Starts for Nyala_69:

(Start: 49 @57346 has 257 MA's), (72, 57436), (74, 57445), (75, 57451), (79, 57487), (80, 57493), (83, 57508), (93, 57562), (94, 57565), (98, 57586), (102, 57601), (103, 57622), (117, 57712), (124, 57760), (141, 57940),

Gene: OSmaximus_70 Start: 58095, Stop: 58802, Start Num: 49

Candidate Starts for OSmaximus_70:

(Start: 49 @58095 has 257 MA's), (72, 58185), (74, 58194), (75, 58200), (79, 58236), (80, 58242), (83, 58257), (93, 58311), (94, 58314), (98, 58335), (102, 58350), (103, 58371), (117, 58461), (124, 58509),

Gene: Obutu_73 Start: 58508, Stop: 59107, Start Num: 57

Candidate Starts for Obutu_73:

(Start: 57 @58508 has 45 MA's), (61, 58523), (69, 58553), (73, 58577), (88, 58670), (92, 58694), (94, 58703), (101, 58736), (102, 58739), (104, 58763), (108, 58793), (117, 58850), (123, 58889),

Gene: Olak_71 Start: 57496, Stop: 58191, Start Num: 49

Candidate Starts for Olak_71:

(Start: 49 @57496 has 257 MA's), (72, 57586), (74, 57595), (75, 57601), (79, 57637), (80, 57643), (83, 57658), (93, 57712), (94, 57715), (98, 57736), (102, 57751), (103, 57772), (117, 57862), (124, 57910), (141, 58090),

Gene: Oline_69 Start: 57495, Stop: 58193, Start Num: 49

Candidate Starts for Oline_69:

(Start: 49 @57495 has 257 MA's), (72, 57585), (74, 57594), (75, 57600), (79, 57636), (80, 57642), (83, 57657), (93, 57711), (94, 57714), (98, 57735), (102, 57750), (103, 57771), (117, 57861),

Gene: Olive_68 Start: 57565, Stop: 58260, Start Num: 49

Candidate Starts for Olive_68:

(Start: 49 @57565 has 257 MA's), (72, 57655), (74, 57664), (75, 57670), (79, 57706), (80, 57712), (83, 57727), (93, 57781), (94, 57784), (98, 57805), (102, 57820), (103, 57841), (117, 57931), (124, 57979), (141, 58159),

Gene: OliverWalter_70 Start: 57815, Stop: 58510, Start Num: 49

Candidate Starts for OliverWalter_70:

(Start: 49 @57815 has 257 MA's), (72, 57905), (74, 57914), (75, 57920), (79, 57956), (80, 57962), (83, 57977), (93, 58031), (94, 58034), (98, 58055), (102, 58070), (103, 58091), (117, 58181), (124, 58229), (141, 58409),

Gene: Omniscient_71 Start: 58209, Stop: 58904, Start Num: 49

Candidate Starts for Omniscient_71:

(Start: 49 @58209 has 257 MA's), (72, 58299), (74, 58308), (75, 58314), (79, 58350), (80, 58356), (83, 58371), (93, 58425), (94, 58428), (98, 58449), (102, 58464), (103, 58485), (117, 58575), (124, 58623), (141, 58803),

Gene: Oosterbaan_70 Start: 57772, Stop: 58479, Start Num: 49

Candidate Starts for Oosterbaan_70:

(Start: 49 @57772 has 257 MA's), (72, 57862), (74, 57871), (75, 57877), (79, 57913), (80, 57919), (83, 57934), (93, 57988), (94, 57991), (98, 58012), (102, 58027), (103, 58048), (117, 58138), (124, 58186),

Gene: Opia_67 Start: 56110, Stop: 56766, Start Num: 48

Candidate Starts for Opia_67:

(6, 55756), (9, 55780), (13, 55819), (40, 56050), (Start: 48 @56110 has 30 MA's), (Start: 51 @56116 has 12 MA's), (67, 56167), (71, 56194), (76, 56224), (84, 56284), (90, 56308), (98, 56350), (100, 56356), (101, 56362), (103, 56386), (117, 56476), (132, 56632),

Gene: OrangeOswald_71 Start: 57926, Stop: 58525, Start Num: 57

Candidate Starts for OrangeOswald_71:

(Start: 57 @57926 has 45 MA's), (61, 57941), (69, 57971), (73, 57995), (88, 58088), (92, 58112), (94, 58121), (101, 58154), (102, 58157), (104, 58181), (108, 58211), (117, 58268), (129, 58352),

Gene: Orfeu_69 Start: 57855, Stop: 58550, Start Num: 49

Candidate Starts for Orfeu_69:

(Start: 49 @57855 has 257 MA's), (72, 57945), (74, 57954), (75, 57960), (79, 57996), (80, 58002), (83, 58017), (93, 58071), (94, 58074), (98, 58095), (102, 58110), (103, 58131), (117, 58221), (124, 58269), (141, 58449),

Gene: Orion_70 Start: 57434, Stop: 58141, Start Num: 49

Candidate Starts for Orion_70:

(Start: 49 @57434 has 257 MA's), (72, 57524), (74, 57533), (75, 57539), (79, 57575), (80, 57581), (83, 57596), (93, 57650), (94, 57653), (98, 57674), (102, 57689), (103, 57710), (117, 57800), (124, 57848),

Gene: Orwigg_70 Start: 57270, Stop: 57977, Start Num: 49

Candidate Starts for Orwigg_70:

(Start: 49 @57270 has 257 MA's), (72, 57360), (74, 57369), (75, 57375), (79, 57411), (80, 57417), (83, 57432), (93, 57486), (94, 57489), (98, 57510), (102, 57525), (103, 57546), (117, 57636), (124, 57684),

Gene: PG1_70 Start: 58005, Stop: 58712, Start Num: 49

Candidate Starts for PG1_70:

(Start: 49 @58005 has 257 MA's), (72, 58095), (74, 58104), (75, 58110), (79, 58146), (80, 58152), (83, 58167), (93, 58221), (94, 58224), (98, 58245), (102, 58260), (103, 58281), (117, 58371), (124, 58419),

Gene: Pacifista_71 Start: 57347, Stop: 58042, Start Num: 49

Candidate Starts for Pacifista_71:

(Start: 49 @57347 has 257 MA's), (72, 57437), (74, 57446), (75, 57452), (79, 57488), (80, 57494), (83, 57509), (93, 57563), (94, 57566), (98, 57587), (102, 57602), (103, 57623), (117, 57713), (124, 57761), (141, 57941),

Gene: PenguinLover67_68 Start: 58680, Stop: 59375, Start Num: 49

Candidate Starts for PenguinLover67_68:

(39, 58608), (Start: 49 @58680 has 257 MA's), (Start: 53 @58692 has 6 MA's), (59, 58713), (65, 58734), (72, 58770), (73, 58773), (74, 58779), (86, 58860), (95, 58902), (103, 58956), (104, 58959), (107, 58986), (111, 59001), (122, 59067),

Gene: Phaedrus_66 Start: 57351, Stop: 57950, Start Num: 57

Candidate Starts for Phaedrus_66:

(Start: 57 @57351 has 45 MA's), (60, 57360), (61, 57366), (69, 57396), (73, 57420), (88, 57513), (92, 57537), (94, 57546), (101, 57579), (102, 57582), (104, 57606), (108, 57636), (117, 57693), (123, 57732),

Gene: Phamished_71 Start: 57516, Stop: 58211, Start Num: 49

Candidate Starts for Phamished_71:

(Start: 49 @57516 has 257 MA's), (72, 57606), (74, 57615), (75, 57621), (79, 57657), (80, 57663), (83, 57678), (93, 57732), (94, 57735), (98, 57756), (102, 57771), (103, 57792), (117, 57882), (124, 57930), (141, 58110),

Gene: Phantasmagoria_65 Start: 56102, Stop: 56755, Start Num: 48

Candidate Starts for Phantasmagoria_65:

(6, 55748), (9, 55772), (13, 55811), (40, 56042), (Start: 48 @56102 has 30 MA's), (Start: 51 @56108 has 12 MA's), (67, 56156), (71, 56183), (76, 56213), (84, 56273), (90, 56297), (98, 56339), (100, 56345), (101, 56351), (103, 56375), (117, 56465), (132, 56621),

Gene: Phareon_68 Start: 57024, Stop: 57731, Start Num: 49

Candidate Starts for Phareon_68:

(Start: 49 @57024 has 257 MA's), (72, 57114), (74, 57123), (75, 57129), (79, 57165), (80, 57171), (83, 57186), (93, 57240), (94, 57243), (98, 57264), (102, 57279), (103, 57300), (117, 57390), (124, 57438),

Gene: PhatCats2014_71 Start: 58010, Stop: 58714, Start Num: 49

Candidate Starts for PhatCats2014_71:

(Start: 49 @58010 has 257 MA's), (72, 58100), (74, 58109), (75, 58115), (79, 58151), (80, 58157), (83, 58172), (93, 58226), (94, 58229), (98, 58250), (102, 58265), (103, 58286), (117, 58376), (124, 58424), (141, 58604),

Gene: PhatLouie_72 Start: 57855, Stop: 58562, Start Num: 49

Candidate Starts for PhatLouie_72:

(Start: 49 @57855 has 257 MA's), (72, 57945), (74, 57954), (79, 57996), (80, 58002), (83, 58017), (93, 58071), (94, 58074), (98, 58095), (102, 58110), (103, 58131), (117, 58221), (124, 58269),

Gene: Phayeta_74 Start: 58412, Stop: 59011, Start Num: 57

Candidate Starts for Phayeta_74:

(Start: 57 @58412 has 45 MA's), (61, 58427), (69, 58457), (73, 58481), (88, 58574), (92, 58598), (94, 58607), (101, 58640), (102, 58643), (104, 58667), (108, 58697), (117, 58754),

Gene: Phelemich_67 Start: 59019, Stop: 59660, Start Num: 56

Candidate Starts for Phelemich_67:

(Start: 56 @59019 has 32 MA's), (68, 59064), (80, 59142), (83, 59157), (84, 59169), (96, 59223), (97, 59229), (101, 59247), (103, 59271), (104, 59274), (107, 59301), (111, 59316), (115, 59355), (118, 59364), (122, 59382), (123, 59400), (131, 59490), (138, 59556),

Gene: PhenghisKhan_70 Start: 57472, Stop: 58179, Start Num: 49

Candidate Starts for PhenghisKhan_70:

(Start: 49 @57472 has 257 MA's), (72, 57562), (74, 57571), (75, 57577), (79, 57613), (80, 57619), (83, 57634), (93, 57688), (94, 57691), (98, 57712), (102, 57727), (103, 57748), (117, 57838), (124, 57886),

Gene: Pherdinand_71 Start: 57759, Stop: 58457, Start Num: 49

Candidate Starts for Pherdinand_71:

(Start: 49 @57759 has 257 MA's), (72, 57849), (74, 57858), (79, 57900), (80, 57906), (83, 57921), (93, 57975), (94, 57978), (98, 57999), (102, 58014), (103, 58035), (117, 58125), (124, 58173), (137, 58326),

Gene: Phergie_70 Start: 57464, Stop: 58171, Start Num: 49

Candidate Starts for Phergie_70:

(Start: 49 @57464 has 257 MA's), (72, 57554), (74, 57563), (75, 57569), (79, 57605), (80, 57611), (83, 57626), (93, 57680), (94, 57683), (98, 57704), (102, 57719), (103, 57740), (117, 57830), (124, 57878),

Gene: Philly_70 Start: 57738, Stop: 58337, Start Num: 57

Candidate Starts for Philly_70:

(Start: 57 @57738 has 45 MA's), (60, 57747), (61, 57753), (69, 57783), (73, 57807), (88, 57900), (92, 57924), (94, 57933), (101, 57966), (102, 57969), (104, 57993), (108, 58023), (117, 58080), (123, 58119),

Gene: Phipps_70 Start: 57557, Stop: 58264, Start Num: 49

Candidate Starts for Phipps_70:

(Start: 49 @57557 has 257 MA's), (72, 57647), (74, 57656), (75, 57662), (79, 57698), (80, 57704), (83, 57719), (93, 57773), (94, 57776), (98, 57797), (102, 57812), (103, 57833), (117, 57923), (124, 57971),

Gene: Phleuron_68 Start: 57300, Stop: 57998, Start Num: 49

Candidate Starts for Phleuron_68:

(Start: 49 @57300 has 257 MA's), (72, 57390), (74, 57399), (75, 57405), (79, 57441), (80, 57447), (83, 57462), (93, 57516), (94, 57519), (98, 57540), (102, 57555), (103, 57576), (117, 57666), (124, 57714),

Gene: Phlyer_71 Start: 58634, Stop: 59233, Start Num: 57

Candidate Starts for Phlyer_71:

(Start: 57 @58634 has 45 MA's), (60, 58643), (61, 58649), (69, 58679), (73, 58703), (88, 58796), (92, 58820), (94, 58829), (101, 58862), (102, 58865), (104, 58889), (108, 58919), (117, 58976),

Gene: PhrankReynolds_69 Start: 57469, Stop: 58176, Start Num: 49

Candidate Starts for PhrankReynolds_69:

(Start: 49 @57469 has 257 MA's), (72, 57559), (74, 57568), (75, 57574), (79, 57610), (80, 57616), (83, 57631), (93, 57685), (94, 57688), (98, 57709), (102, 57724), (103, 57745), (117, 57835), (124, 57883),

Gene: PhrodoBaggins_72 Start: 57863, Stop: 58570, Start Num: 49

Candidate Starts for PhrodoBaggins_72:

(Start: 49 @57863 has 257 MA's), (72, 57953), (74, 57962), (75, 57968), (79, 58004), (80, 58010), (83, 58025), (93, 58079), (94, 58082), (98, 58103), (102, 58118), (103, 58139), (117, 58229), (124, 58277),

Gene: Phunky_68 Start: 57369, Stop: 58064, Start Num: 49

Candidate Starts for Phunky_68:

(Start: 49 @57369 has 257 MA's), (72, 57459), (74, 57468), (75, 57474), (79, 57510), (80, 57516), (83, 57531), (93, 57585), (94, 57588), (98, 57609), (102, 57624), (103, 57645), (117, 57735), (124, 57783), (141, 57963),

Gene: Piglet_0071 Start: 57982, Stop: 58689, Start Num: 49

Candidate Starts for Piglet_0071:

(Start: 49 @57982 has 257 MA's), (72, 58072), (74, 58081), (75, 58087), (79, 58123), (80, 58129), (83, 58144), (93, 58198), (94, 58201), (98, 58222), (102, 58237), (103, 58258), (117, 58348), (124, 58396),

Gene: Pine5_63 Start: 49969, Stop: 50628, Start Num: 55

Candidate Starts for Pine5_63:

(55, 49969), (66, 50002), (83, 50116), (97, 50188), (121, 50338), (130, 50449), (142, 50578), (143, 50581), (144, 50587),

Gene: PinheadLarry_69 Start: 57631, Stop: 58338, Start Num: 49

Candidate Starts for PinheadLarry_69:

(Start: 49 @57631 has 257 MA's), (72, 57721), (74, 57730), (75, 57736), (79, 57772), (80, 57778), (83, 57793), (93, 57847), (94, 57850), (98, 57871), (102, 57886), (103, 57907), (117, 57997), (124, 58045),

Gene: Pinkman_70 Start: 57581, Stop: 58288, Start Num: 49

Candidate Starts for Pinkman_70:

(Start: 49 @57581 has 257 MA's), (72, 57671), (74, 57680), (75, 57686), (79, 57722), (80, 57728), (83, 57743), (93, 57797), (94, 57800), (98, 57821), (102, 57836), (103, 57857), (117, 57947), (124, 57995),

Gene: Pipefish_74 Start: 59045, Stop: 59644, Start Num: 57

Candidate Starts for Pipefish_74:

(Start: 57 @59045 has 45 MA's), (61, 59060), (69, 59090), (73, 59114), (88, 59207), (92, 59231), (94, 59240), (101, 59273), (102, 59276), (104, 59300), (108, 59330), (117, 59387), (123, 59426), (129, 59471),

Gene: Pipsqueak_67 Start: 57310, Stop: 58017, Start Num: 49

Candidate Starts for Pipsqueak_67:

(Start: 49 @57310 has 257 MA's), (72, 57400), (74, 57409), (75, 57415), (79, 57451), (80, 57457), (83, 57472), (93, 57526), (94, 57529), (98, 57550), (102, 57565), (103, 57586), (117, 57676), (124, 57724),

Gene: Placalicious_70 Start: 58351, Stop: 59055, Start Num: 49

Candidate Starts for Placalicious_70:

(Start: 49 @58351 has 257 MA's), (72, 58441), (74, 58450), (75, 58456), (79, 58492), (80, 58498), (83, 58513), (93, 58567), (94, 58570), (98, 58591), (102, 58606), (103, 58627), (117, 58717), (124, 58765), (141, 58945),

Gene: Plmatters_68 Start: 57322, Stop: 58017, Start Num: 49

Candidate Starts for Plmatters_68:

(Start: 49 @57322 has 257 MA's), (72, 57412), (74, 57421), (75, 57427), (79, 57463), (80, 57469), (83, 57484), (93, 57538), (94, 57541), (98, 57562), (102, 57577), (103, 57598), (117, 57688), (124, 57736),

(141, 57916),

Gene: Podrick_69 Start: 57391, Stop: 58098, Start Num: 49

Candidate Starts for Podrick_69:

(Start: 49 @57391 has 257 MA's), (72, 57481), (74, 57490), (75, 57496), (79, 57532), (80, 57538), (83, 57553), (93, 57607), (94, 57610), (98, 57631), (102, 57646), (103, 57667), (117, 57757), (124, 57805),

Gene: Pops_68 Start: 57338, Stop: 58036, Start Num: 49

Candidate Starts for Pops_68:

(Start: 49 @57338 has 257 MA's), (72, 57428), (74, 57437), (75, 57443), (79, 57479), (80, 57485), (83, 57500), (93, 57554), (94, 57557), (98, 57578), (102, 57593), (103, 57614), (117, 57704), (124, 57752),

Gene: Poster_65 Start: 58480, Stop: 59067, Start Num: 56

Candidate Starts for Poster_65:

(4, 58075), (8, 58117), (17, 58201), (19, 58219), (22, 58249), (30, 58345), (32, 58354), (Start: 56 @58480 has 32 MA's), (72, 58546), (73, 58549), (77, 58585), (86, 58636), (94, 58675), (95, 58678), (103, 58732), (104, 58735), (122, 58843), (129, 58906), (139, 59008),

Gene: Potter_67 Start: 57316, Stop: 58023, Start Num: 49

Candidate Starts for Potter_67:

(Start: 49 @57316 has 257 MA's), (72, 57406), (74, 57415), (75, 57421), (79, 57457), (80, 57463), (83, 57478), (93, 57532), (94, 57535), (98, 57556), (102, 57571), (103, 57592), (117, 57682), (124, 57730),

Gene: Prickles_71 Start: 57847, Stop: 58542, Start Num: 49

Candidate Starts for Prickles_71:

(Start: 49 @57847 has 257 MA's), (72, 57937), (74, 57946), (79, 57988), (80, 57994), (83, 58009), (93, 58063), (94, 58066), (98, 58087), (102, 58102), (103, 58123), (117, 58213), (124, 58261), (141, 58441),

Gene: Prince_66 Start: 59594, Stop: 60181, Start Num: 56

Candidate Starts for Prince_66:

(30, 59459), (32, 59468), (Start: 56 @59594 has 32 MA's), (65, 59624), (72, 59660), (73, 59663), (77, 59699), (86, 59750), (94, 59789), (95, 59792), (103, 59846), (104, 59849), (109, 59882), (111, 59891), (122, 59957), (129, 60020),

Gene: ProfessorX_68 Start: 57363, Stop: 58058, Start Num: 49

Candidate Starts for ProfessorX_68:

(Start: 49 @57363 has 257 MA's), (72, 57453), (74, 57462), (75, 57468), (79, 57504), (80, 57510), (83, 57525), (93, 57579), (94, 57582), (98, 57603), (102, 57618), (103, 57639), (117, 57729), (124, 57777), (141, 57957),

Gene: Puhltonio_68 Start: 57592, Stop: 58287, Start Num: 49

Candidate Starts for Puhltonio_68:

(Start: 49 @57592 has 257 MA's), (72, 57682), (74, 57691), (75, 57697), (79, 57733), (80, 57739), (83, 57754), (93, 57808), (94, 57811), (98, 57832), (102, 57847), (103, 57868), (117, 57958), (124, 58006), (141, 58186),

Gene: QueenBeane_70 Start: 57635, Stop: 58330, Start Num: 49

Candidate Starts for QueenBeane_70:

(Start: 49 @57635 has 257 MA's), (72, 57725), (74, 57734), (75, 57740), (79, 57776), (80, 57782), (83, 57797), (93, 57851), (94, 57854), (98, 57875), (102, 57890), (103, 57911), (117, 58001), (124, 58049), (141, 58229),

Gene: Quesadilla_69 Start: 58834, Stop: 59553, Start Num: 49

Candidate Starts for Quesadilla_69:

(Start: 49 @58834 has 257 MA's), (Start: 53 @58846 has 6 MA's), (62, 58879), (65, 58888), (67, 58891), (70, 58906), (72, 58924), (73, 58927), (86, 59014), (94, 59053), (95, 59056), (103, 59110), (104, 59113),

Gene: Quisquilliae_72 Start: 57647, Stop: 58354, Start Num: 49

Candidate Starts for Quisquilliae_72:

(Start: 49 @57647 has 257 MA's), (72, 57737), (74, 57746), (79, 57788), (80, 57794), (83, 57809), (93, 57863), (94, 57866), (98, 57887), (102, 57902), (103, 57923), (117, 58013),

Gene: Qyrzula_60 Start: 56221, Stop: 56880, Start Num: 48

Candidate Starts for Qyrzula_60:

(6, 55867), (9, 55891), (13, 55930), (40, 56161), (Start: 48 @56221 has 30 MA's), (Start: 51 @56227 has 12 MA's), (67, 56281), (71, 56308), (76, 56338), (84, 56398), (90, 56422), (98, 56464), (100, 56470), (101, 56476), (103, 56500), (117, 56590), (132, 56746),

Gene: RagingRooster_70 Start: 57566, Stop: 58165, Start Num: 57

Candidate Starts for RagingRooster_70:

(Start: 57 @57566 has 45 MA's), (60, 57575), (61, 57581), (69, 57611), (73, 57635), (88, 57728), (92, 57752), (94, 57761), (101, 57794), (102, 57797), (104, 57821), (108, 57851), (117, 57908),

Gene: RawrgerThat_68 Start: 59487, Stop: 60074, Start Num: 56

Candidate Starts for RawrgerThat_68:

(Start: 56 @59487 has 32 MA's), (65, 59517), (72, 59553), (73, 59556), (77, 59592), (86, 59643), (94, 59682), (95, 59685), (103, 59739), (104, 59742), (111, 59784), (122, 59850), (129, 59913), (139, 60015),

Gene: RedMaple_70 Start: 58074, Stop: 58781, Start Num: 49

Candidate Starts for RedMaple_70:

(Start: 49 @58074 has 257 MA's), (72, 58164), (74, 58173), (75, 58179), (79, 58215), (80, 58221), (83, 58236), (93, 58290), (94, 58293), (98, 58314), (102, 58329), (103, 58350), (117, 58440), (124, 58488),

Gene: Reprobate_69 Start: 59024, Stop: 59665, Start Num: 56

Candidate Starts for Reprobate_69:

(Start: 56 @59024 has 32 MA's), (68, 59069), (80, 59147), (83, 59162), (84, 59174), (96, 59228), (97, 59234), (101, 59252), (103, 59276), (104, 59279), (107, 59306), (111, 59321), (115, 59360), (118, 59369), (122, 59387), (123, 59405), (131, 59495), (138, 59561),

Gene: Rhinoforte_66 Start: 56143, Stop: 56793, Start Num: 48

Candidate Starts for Rhinoforte_66:

(6, 55789), (9, 55813), (13, 55852), (40, 56083), (Start: 48 @56143 has 30 MA's), (Start: 51 @56149 has 12 MA's), (67, 56194), (71, 56221), (76, 56251), (84, 56311), (90, 56335), (98, 56377), (100, 56383), (101, 56389), (103, 56413), (117, 56503), (132, 56659),

Gene: Rich_70 Start: 60248, Stop: 60886, Start Num: 56

Candidate Starts for Rich_70:

(44, 60227), (Start: 56 @60248 has 32 MA's), (65, 60278), (80, 60371), (96, 60452), (97, 60458), (101, 60476), (103, 60500), (104, 60503), (114, 60572), (115, 60584), (118, 60593), (122, 60611), (131, 60719), (138, 60785),

Gene: Ricotta_67 Start: 57329, Stop: 58024, Start Num: 49

Candidate Starts for Ricotta_67:

(Start: 49 @57329 has 257 MA's), (72, 57419), (74, 57428), (75, 57434), (79, 57470), (80, 57476), (83, 57491), (93, 57545), (94, 57548), (98, 57569), (102, 57584), (103, 57605), (117, 57695), (124, 57743), (141, 57923),

Gene: Riggan_71 Start: 57658, Stop: 58353, Start Num: 49

Candidate Starts for Riggan_71:

(Start: 49 @57658 has 257 MA's), (72, 57748), (74, 57757), (75, 57763), (79, 57799), (80, 57805), (83, 57820), (93, 57874), (94, 57877), (98, 57898), (102, 57913), (103, 57934), (117, 58024), (124, 58072), (141, 58252),

Gene: Rimu_73 Start: 57796, Stop: 58503, Start Num: 49

Candidate Starts for Rimu_73:

(Start: 49 @57796 has 257 MA's), (72, 57886), (74, 57895), (75, 57901), (79, 57937), (80, 57943), (83, 57958), (93, 58012), (94, 58015), (98, 58036), (102, 58051), (103, 58072), (117, 58162),

Gene: Rita1961_72 Start: 58284, Stop: 58883, Start Num: 57

Candidate Starts for Rita1961_72:

(Start: 57 @58284 has 45 MA's), (61, 58299), (73, 58353), (88, 58446), (92, 58470), (94, 58479), (101, 58512), (102, 58515), (104, 58539), (108, 58569), (117, 58626),

Gene: Robyn_71 Start: 57931, Stop: 58629, Start Num: 49

Candidate Starts for Robyn_71:

(Start: 49 @57931 has 257 MA's), (72, 58021), (74, 58030), (79, 58072), (80, 58078), (83, 58093), (93, 58147), (94, 58150), (98, 58171), (102, 58186), (103, 58207), (117, 58297), (124, 58345),

Gene: Roliet_67 Start: 56687, Stop: 57394, Start Num: 49

Candidate Starts for Roliet_67:

(Start: 49 @56687 has 257 MA's), (72, 56777), (74, 56786), (75, 56792), (79, 56828), (80, 56834), (83, 56849), (93, 56903), (94, 56906), (98, 56927), (102, 56942), (103, 56963), (117, 57053), (124, 57101), (141, 57281),

Gene: RomaT_71 Start: 58485, Stop: 59084, Start Num: 57

Candidate Starts for RomaT_71:

(Start: 57 @58485 has 45 MA's), (60, 58494), (61, 58500), (69, 58530), (73, 58554), (88, 58647), (92, 58671), (94, 58680), (101, 58713), (102, 58716), (104, 58740), (108, 58770), (117, 58827), (123, 58866), (129, 58911),

Gene: Roscoe_70 Start: 57775, Stop: 58482, Start Num: 49

Candidate Starts for Roscoe_70:

(Start: 49 @57775 has 257 MA's), (72, 57865), (74, 57874), (75, 57880), (79, 57916), (80, 57922), (83, 57937), (93, 57991), (94, 57994), (98, 58015), (102, 58030), (103, 58051), (117, 58141), (124, 58189),

Gene: Rosebush_65 Start: 56206, Stop: 56859, Start Num: 48

Candidate Starts for Rosebush_65:

(6, 55852), (9, 55876), (13, 55915), (40, 56146), (Start: 48 @56206 has 30 MA's), (Start: 51 @56212 has 12 MA's), (67, 56260), (71, 56287), (76, 56317), (84, 56377), (90, 56401), (98, 56443), (100, 56449), (101, 56455), (103, 56479), (117, 56569), (132, 56725),

Gene: Roy17_68 Start: 57058, Stop: 57753, Start Num: 49

Candidate Starts for Roy17_68:

(Start: 49 @57058 has 257 MA's), (72, 57148), (74, 57157), (75, 57163), (79, 57199), (80, 57205), (83, 57220), (93, 57274), (94, 57277), (98, 57298), (102, 57313), (103, 57334), (117, 57424), (124, 57472), (141, 57652),

Gene: SDcharge11_69 Start: 56829, Stop: 57527, Start Num: 49

Candidate Starts for SDcharge11_69:

(Start: 49 @56829 has 257 MA's), (72, 56919), (74, 56928), (79, 56970), (80, 56976), (83, 56991), (93, 57045), (94, 57048), (98, 57069), (102, 57084), (103, 57105), (117, 57195), (124, 57243),

Gene: Sabella_66 Start: 56042, Stop: 56695, Start Num: 48

Candidate Starts for Sabella_66:

(40, 55982), (Start: 48 @56042 has 30 MA's), (Start: 51 @56048 has 12 MA's), (67, 56096), (71, 56123), (76, 56153), (84, 56213), (90, 56237), (98, 56279), (100, 56285), (101, 56291), (103, 56315), (117, 56405), (132, 56561),

Gene: Saguaro_66 Start: 58049, Stop: 58765, Start Num: 56

Candidate Starts for Saguaro_66:

(Start: 56 @58049 has 32 MA's), (68, 58094), (72, 58115), (73, 58118), (80, 58172), (81, 58178), (83, 58187), (85, 58202), (94, 58244), (103, 58301), (104, 58304), (117, 58391), (129, 58475), (134, 58559),

Gene: Samaymay_70 Start: 57635, Stop: 58330, Start Num: 49

Candidate Starts for Samaymay_70:

(Start: 49 @57635 has 257 MA's), (72, 57725), (74, 57734), (75, 57740), (79, 57776), (80, 57782), (83, 57797), (93, 57851), (94, 57854), (98, 57875), (102, 57890), (103, 57911), (117, 58001), (124, 58049), (141, 58229),

Gene: SassyCat97_68 Start: 57306, Stop: 58013, Start Num: 49

Candidate Starts for SassyCat97_68:

(Start: 49 @57306 has 257 MA's), (72, 57396), (74, 57405), (75, 57411), (79, 57447), (80, 57453), (83, 57468), (93, 57522), (94, 57525), (98, 57546), (102, 57561), (103, 57582), (117, 57672), (124, 57720),

Gene: Schadenfreude_70 Start: 57233, Stop: 57931, Start Num: 49

Candidate Starts for Schadenfreude_70:

(Start: 49 @57233 has 257 MA's), (72, 57323), (74, 57332), (79, 57374), (80, 57380), (83, 57395), (93, 57449), (94, 57452), (98, 57473), (102, 57488), (103, 57509), (117, 57599), (124, 57647),

Gene: Schueller_69 Start: 57590, Stop: 58285, Start Num: 49

Candidate Starts for Schueller_69:

(Start: 49 @57590 has 257 MA's), (72, 57680), (74, 57689), (75, 57695), (79, 57731), (80, 57737), (83, 57752), (93, 57806), (94, 57809), (98, 57830), (102, 57845), (103, 57866), (117, 57956), (124, 58004),

Gene: Scoot17C_71 Start: 57436, Stop: 58143, Start Num: 49

Candidate Starts for Scoot17C_71:

(Start: 49 @57436 has 257 MA's), (72, 57526), (74, 57535), (75, 57541), (79, 57577), (80, 57583), (83, 57598), (93, 57652), (94, 57655), (98, 57676), (102, 57691), (103, 57712), (117, 57802), (124, 57850),

Gene: Scrick_69 Start: 57318, Stop: 58025, Start Num: 49

Candidate Starts for Scrick_69:

(Start: 49 @57318 has 257 MA's), (72, 57408), (74, 57417), (75, 57423), (79, 57459), (80, 57465), (83, 57480), (93, 57534), (94, 57537), (98, 57558), (102, 57573), (103, 57594), (117, 57684),

Gene: Selr12_71 Start: 57375, Stop: 58070, Start Num: 49

Candidate Starts for Selr12_71:

(Start: 49 @57375 has 257 MA's), (72, 57465), (74, 57474), (75, 57480), (79, 57516), (80, 57522), (83, 57537), (93, 57591), (94, 57594), (98, 57615), (102, 57630), (103, 57651), (117, 57741), (124, 57789),

(141, 57969),

Gene: Serendipitous_69 Start: 58599, Stop: 59252, Start Num: 56

Candidate Starts for Serendipitous_69:

(15, 58341), (33, 58479), (Start: 56 @58599 has 32 MA's), (80, 58722), (83, 58737), (96, 58803), (97, 58809), (101, 58827), (103, 58851), (104, 58854), (105, 58866), (114, 58923), (115, 58935), (118, 58944), (122, 58962), (131, 59070),

Gene: Serendipity_70 Start: 57791, Stop: 58498, Start Num: 49

Candidate Starts for Serendipity_70:

(Start: 49 @57791 has 257 MA's), (72, 57881), (74, 57890), (79, 57932), (80, 57938), (83, 57953), (93, 58007), (94, 58010), (98, 58031), (102, 58046), (103, 58067), (117, 58157),

Gene: Serpentine_0071 Start: 57874, Stop: 58581, Start Num: 49

Candidate Starts for Serpentine_0071:

(Start: 49 @57874 has 257 MA's), (72, 57964), (74, 57973), (75, 57979), (79, 58015), (80, 58021), (83, 58036), (93, 58090), (94, 58093), (98, 58114), (102, 58129), (103, 58150), (117, 58240), (124, 58288),

Gene: Shatter_64 Start: 51329, Stop: 51919, Start Num: 51

Candidate Starts for Shatter_64:

(Start: 51 @51329 has 12 MA's), (54, 51338), (71, 51401), (80, 51464), (84, 51491), (88, 51503), (89, 51512), (94, 51536), (107, 51623), (120, 51695), (122, 51704), (126, 51752), (129, 51767),

Gene: Sheila_66 Start: 56718, Stop: 57425, Start Num: 49

Candidate Starts for Sheila_66:

(Start: 49 @56718 has 257 MA's), (72, 56808), (74, 56817), (79, 56859), (80, 56865), (83, 56880), (93, 56934), (94, 56937), (98, 56958), (102, 56973), (103, 56994), (117, 57084), (124, 57132), (141, 57312),

Gene: ShiVal_68 Start: 57343, Stop: 58050, Start Num: 49

Candidate Starts for ShiVal_68:

(Start: 49 @57343 has 257 MA's), (72, 57433), (74, 57442), (75, 57448), (79, 57484), (80, 57490), (83, 57505), (93, 57559), (94, 57562), (98, 57583), (102, 57598), (103, 57619), (117, 57709), (124, 57757), (137, 57910),

Gene: Sigman_70 Start: 57329, Stop: 58024, Start Num: 49

Candidate Starts for Sigman_70:

(Start: 49 @57329 has 257 MA's), (72, 57419), (74, 57428), (75, 57434), (79, 57470), (80, 57476), (83, 57491), (93, 57545), (94, 57548), (98, 57569), (102, 57584), (103, 57605), (117, 57695), (124, 57743), (141, 57923),

Gene: Simielle_70 Start: 57300, Stop: 57995, Start Num: 49

Candidate Starts for Simielle_70:

(Start: 49 @57300 has 257 MA's), (72, 57390), (74, 57399), (75, 57405), (79, 57441), (80, 57447), (83, 57462), (93, 57516), (94, 57519), (98, 57540), (102, 57555), (103, 57576), (117, 57666), (124, 57714), (141, 57894),

Gene: SirJeffery_70 Start: 59195, Stop: 59848, Start Num: 56

Candidate Starts for SirJeffery_70:

(33, 59081), (Start: 56 @59195 has 32 MA's), (80, 59318), (83, 59333), (84, 59345), (96, 59399), (97, 59405), (101, 59423), (103, 59447), (104, 59450), (114, 59519), (115, 59531), (118, 59540), (122, 59558), (131, 59666),

Gene: Sisko_62 Start: 51559, Stop: 52155, Start Num: 51

Candidate Starts for Sisko_62:

(Start: 51 @51559 has 12 MA's), (71, 51637), (79, 51694), (81, 51706), (84, 51727), (94, 51772), (98, 51793), (107, 51859), (122, 51940), (126, 51988), (129, 52003),

Gene: Skippy_72 Start: 57727, Stop: 58422, Start Num: 49

Candidate Starts for Skippy_72:

(Start: 49 @57727 has 257 MA's), (72, 57817), (74, 57826), (75, 57832), (79, 57868), (80, 57874), (83, 57889), (93, 57943), (94, 57946), (98, 57967), (102, 57982), (103, 58003), (117, 58093), (124, 58141),

Gene: Slatt_70 Start: 57602, Stop: 58309, Start Num: 49

Candidate Starts for Slatt_70:

(Start: 49 @57602 has 257 MA's), (72, 57692), (74, 57701), (75, 57707), (79, 57743), (80, 57749), (83, 57764), (93, 57818), (94, 57821), (98, 57842), (102, 57857), (103, 57878), (117, 57968),

Gene: SlippinJimmy_74 Start: 59309, Stop: 59908, Start Num: 57

Candidate Starts for SlippinJimmy_74:

(Start: 57 @59309 has 45 MA's), (60, 59318), (61, 59324), (69, 59354), (73, 59378), (88, 59471), (92, 59495), (94, 59504), (101, 59537), (102, 59540), (104, 59564), (108, 59594), (117, 59651), (123, 59690), (129, 59735),

Gene: Soile_71 Start: 57849, Stop: 58547, Start Num: 49

Candidate Starts for Soile_71:

(Start: 49 @57849 has 257 MA's), (72, 57939), (74, 57948), (75, 57954), (79, 57990), (80, 57996), (83, 58011), (93, 58065), (94, 58068), (98, 58089), (102, 58104), (103, 58125), (117, 58215), (124, 58263),

Gene: Solosis_68 Start: 57301, Stop: 58008, Start Num: 49

Candidate Starts for Solosis_68:

(Start: 49 @57301 has 257 MA's), (72, 57391), (74, 57400), (79, 57442), (80, 57448), (83, 57463), (93, 57517), (94, 57520), (98, 57541), (102, 57556), (103, 57577), (117, 57667), (124, 57715),

Gene: Sophia_68 Start: 57294, Stop: 58001, Start Num: 49

Candidate Starts for Sophia_68:

(Start: 49 @57294 has 257 MA's), (72, 57384), (74, 57393), (75, 57399), (79, 57435), (80, 57441), (83, 57456), (93, 57510), (94, 57513), (98, 57534), (102, 57549), (103, 57570), (117, 57660), (124, 57708),

Gene: Soto_67 Start: 56861, Stop: 57556, Start Num: 49

Candidate Starts for Soto_67:

(Start: 49 @56861 has 257 MA's), (72, 56951), (74, 56960), (79, 57002), (80, 57008), (83, 57023), (93, 57077), (94, 57080), (98, 57101), (102, 57116), (103, 57137), (117, 57227), (124, 57275), (141, 57455),

Gene: Sour_64 Start: 53787, Stop: 54392, Start Num: 43

Candidate Starts for Sour_64:

(Start: 43 @53787 has 1 MA's), (71, 53883), (79, 53940), (81, 53952), (94, 54018), (98, 54039), (107, 54105), (117, 54165), (119, 54171), (120, 54177), (122, 54186), (126, 54234), (129, 54249),

Gene: Spartan300_69 Start: 57570, Stop: 58265, Start Num: 49

Candidate Starts for Spartan300_69:

(Start: 49 @57570 has 257 MA's), (72, 57660), (74, 57669), (75, 57675), (79, 57711), (80, 57717), (83, 57732), (93, 57786), (94, 57789), (98, 57810), (102, 57825), (103, 57846), (117, 57936), (124, 57984), (141, 58164),

Gene: Squid_69 Start: 57594, Stop: 58292, Start Num: 49

Candidate Starts for Squid_69:

(Start: 49 @57594 has 257 MA's), (72, 57684), (74, 57693), (79, 57735), (80, 57741), (83, 57756), (93, 57810), (94, 57813), (98, 57834), (102, 57849), (103, 57870), (117, 57960),

Gene: Squiggle_69 Start: 57313, Stop: 58020, Start Num: 49

Candidate Starts for Squiggle_69:

(Start: 49 @57313 has 257 MA's), (72, 57403), (74, 57412), (75, 57418), (79, 57454), (80, 57460), (83, 57475), (93, 57529), (94, 57532), (98, 57553), (102, 57568), (103, 57589), (117, 57679), (124, 57727),

Gene: StAugustine_97 Start: 69363, Stop: 69944, Start Num: 53

Candidate Starts for StAugustine_97:

(Start: 53 @69363 has 6 MA's), (71, 69432), (74, 69447), (88, 69534), (89, 69543), (92, 69558), (94, 69567), (104, 69627), (117, 69726), (145, 69939),

Gene: Stinger_67 Start: 58422, Stop: 59009, Start Num: 56

Candidate Starts for Stinger_67:

(4, 58029), (17, 58155), (20, 58185), (32, 58296), (Start: 56 @58422 has 32 MA's), (58, 58428), (65, 58452), (72, 58488), (73, 58491), (79, 58539), (86, 58578), (87, 58581), (94, 58617), (95, 58620), (103, 58674), (104, 58677), (122, 58785), (129, 58848), (139, 58950),

Gene: StinkyVeggy_70 Start: 59079, Stop: 59732, Start Num: 56

Candidate Starts for StinkyVeggy_70:

(15, 58800), (33, 58959), (Start: 56 @59079 has 32 MA's), (74, 59154), (80, 59202), (83, 59217), (97, 59289), (101, 59307), (103, 59331), (104, 59334), (105, 59346), (114, 59403), (115, 59415), (118, 59424), (122, 59442), (131, 59550), (138, 59616),

Gene: Struggle_70 Start: 57414, Stop: 58112, Start Num: 49

Candidate Starts for Struggle_70:

(Start: 49 @57414 has 257 MA's), (72, 57504), (74, 57513), (75, 57519), (79, 57555), (80, 57561), (83, 57576), (93, 57630), (94, 57633), (98, 57654), (102, 57669), (103, 57690), (117, 57780), (124, 57828),

Gene: Suffolk_68 Start: 57143, Stop: 57841, Start Num: 49

Candidate Starts for Suffolk_68:

(Start: 49 @57143 has 257 MA's), (72, 57233), (74, 57242), (79, 57284), (80, 57290), (83, 57305), (93, 57359), (94, 57362), (98, 57383), (102, 57398), (103, 57419), (117, 57509), (124, 57557),

Gene: Suigeneris_72 Start: 59346, Stop: 59990, Start Num: 56

Candidate Starts for Suigeneris_72:

(33, 59232), (Start: 56 @59346 has 32 MA's), (80, 59469), (83, 59484), (84, 59496), (96, 59550), (97, 59556), (101, 59574), (103, 59598), (104, 59601), (114, 59670), (115, 59682), (118, 59691), (122, 59709), (131, 59817),

Gene: Surely_70 Start: 57884, Stop: 58582, Start Num: 49

Candidate Starts for Surely_70:

(Start: 49 @57884 has 257 MA's), (72, 57974), (74, 57983), (75, 57989), (79, 58025), (80, 58031), (83, 58046), (93, 58100), (94, 58103), (98, 58124), (102, 58139), (103, 58160), (117, 58250), (124, 58298),

Gene: Swiphy_74 Start: 57855, Stop: 58562, Start Num: 49

Candidate Starts for Swiphy_74:

(Start: 49 @57855 has 257 MA's), (72, 57945), (74, 57954), (79, 57996), (80, 58002), (83, 58017), (93, 58071), (94, 58074), (98, 58095), (102, 58110), (103, 58131), (117, 58221), (124, 58269),

Gene: Swish_71 Start: 57744, Stop: 58445, Start Num: 49

Candidate Starts for Swish_71:

(Start: 49 @57744 has 257 MA's), (72, 57834), (74, 57843), (79, 57885), (80, 57891), (83, 57906), (93, 57960), (94, 57963), (98, 57984), (102, 57999), (103, 58020), (117, 58110),

Gene: SynergyX_71 Start: 57923, Stop: 58522, Start Num: 57

Candidate Starts for SynergyX_71:

(Start: 57 @57923 has 45 MA's), (60, 57932), (61, 57938), (69, 57968), (73, 57992), (88, 58085), (92, 58109), (94, 58118), (101, 58151), (102, 58154), (104, 58178), (108, 58208), (117, 58265), (129, 58349),

Gene: TA17A_66 Start: 56048, Stop: 56698, Start Num: 48

Candidate Starts for TA17A_66:

(40, 55988), (Start: 48 @56048 has 30 MA's), (Start: 51 @56054 has 12 MA's), (67, 56099), (71, 56126), (76, 56156), (82, 56201), (84, 56216), (90, 56240), (98, 56282), (100, 56288), (101, 56294), (103, 56318), (117, 56408), (132, 56564),

Gene: TallGrassMM_69 Start: 57384, Stop: 58079, Start Num: 49

Candidate Starts for TallGrassMM_69:

(Start: 49 @57384 has 257 MA's), (72, 57474), (74, 57483), (75, 57489), (79, 57525), (80, 57531), (83, 57546), (93, 57600), (94, 57603), (98, 57624), (102, 57639), (103, 57660), (117, 57750), (124, 57798),

Gene: Telesworld_68 Start: 57459, Stop: 58154, Start Num: 49

Candidate Starts for Telesworld_68:

(Start: 49 @57459 has 257 MA's), (72, 57549), (74, 57558), (75, 57564), (79, 57600), (80, 57606), (83, 57621), (93, 57675), (94, 57678), (98, 57699), (102, 57714), (103, 57735), (117, 57825), (124, 57873), (141, 58053),

Gene: Thonko_73 Start: 57522, Stop: 58262, Start Num: 52

Candidate Starts for Thonko_73:

(26, 57327), (31, 57402), (Start: 52 @57522 has 2 MA's), (68, 57585), (72, 57606), (73, 57609), (78, 57654), (83, 57678), (91, 57717), (103, 57792), (120, 57894),

Gene: Thora_69 Start: 57824, Stop: 58531, Start Num: 49

Candidate Starts for Thora_69:

(Start: 49 @57824 has 257 MA's), (72, 57914), (74, 57923), (75, 57929), (79, 57965), (80, 57971), (83, 57986), (93, 58040), (94, 58043), (98, 58064), (102, 58079), (103, 58100), (117, 58190), (124, 58238),

Gene: ThreeOh3D2_72 Start: 58001, Stop: 58708, Start Num: 49

Candidate Starts for ThreeOh3D2_72:

(Start: 49 @58001 has 257 MA's), (72, 58091), (74, 58100), (75, 58106), (79, 58142), (80, 58148), (83, 58163), (93, 58217), (94, 58220), (98, 58241), (102, 58256), (103, 58277), (117, 58367), (124, 58415),

Gene: Thunderbird_70 Start: 57567, Stop: 58274, Start Num: 49

Candidate Starts for Thunderbird_70:

(Start: 49 @57567 has 257 MA's), (72, 57657), (74, 57666), (79, 57708), (80, 57714), (83, 57729), (93, 57783), (94, 57786), (98, 57807), (102, 57822), (103, 57843), (117, 57933), (124, 57981),

Gene: Timmi_69 Start: 57341, Stop: 58048, Start Num: 49

Candidate Starts for Timmi_69:

(Start: 49 @57341 has 257 MA's), (72, 57431), (74, 57440), (79, 57482), (80, 57488), (83, 57503), (93, 57557), (94, 57560), (98, 57581), (102, 57596), (103, 57617), (117, 57707), (124, 57755),

Gene: Tinciduntolum_67 Start: 56209, Stop: 56862, Start Num: 48

Candidate Starts for Tinciduntolum_67:

(6, 55855), (9, 55879), (13, 55918), (40, 56149), (Start: 48 @56209 has 30 MA's), (Start: 51 @56215 has 12 MA's), (67, 56263), (71, 56290), (76, 56320), (84, 56380), (90, 56404), (98, 56446), (100, 56452), (101, 56458), (103, 56482), (117, 56572), (132, 56728),

Gene: TomBombadil_70 Start: 57868, Stop: 58575, Start Num: 49

Candidate Starts for TomBombadil_70:

(Start: 49 @57868 has 257 MA's), (72, 57958), (74, 57967), (75, 57973), (79, 58009), (80, 58015), (83, 58030), (93, 58084), (94, 58087), (98, 58108), (102, 58123), (103, 58144), (117, 58234), (124, 58282),

Gene: Tomlarah_71 Start: 58194, Stop: 58889, Start Num: 49

Candidate Starts for Tomlarah_71:

(Start: 49 @58194 has 257 MA's), (72, 58284), (74, 58293), (75, 58299), (79, 58335), (80, 58341), (83, 58356), (93, 58410), (94, 58413), (98, 58434), (102, 58449), (103, 58470), (117, 58560), (124, 58608), (141, 58788),

Gene: Toni_70 Start: 57786, Stop: 58481, Start Num: 49

Candidate Starts for Toni_70:

(Start: 49 @57786 has 257 MA's), (72, 57876), (74, 57885), (75, 57891), (79, 57927), (80, 57933), (83, 57948), (93, 58002), (94, 58005), (98, 58026), (102, 58041), (103, 58062), (117, 58152), (141, 58380),

Gene: Tooj_68 Start: 57011, Stop: 57709, Start Num: 49

Candidate Starts for Tooj_68:

(Start: 49 @57011 has 257 MA's), (72, 57101), (74, 57110), (79, 57152), (80, 57158), (83, 57173), (93, 57227), (94, 57230), (98, 57251), (102, 57266), (103, 57287), (117, 57377), (124, 57425),

Gene: Tres_66 Start: 56063, Stop: 56716, Start Num: 48

Candidate Starts for Tres_66:

(6, 55709), (9, 55733), (13, 55772), (40, 56003), (Start: 48 @56063 has 30 MA's), (Start: 51 @56069 has 12 MA's), (67, 56117), (71, 56144), (76, 56174), (84, 56234), (90, 56258), (98, 56300), (100, 56306), (101, 56312), (103, 56336), (117, 56426), (132, 56582),

Gene: True_68 Start: 57320, Stop: 58015, Start Num: 49

Candidate Starts for True_68:

(Start: 49 @57320 has 257 MA's), (72, 57410), (74, 57419), (75, 57425), (79, 57461), (80, 57467), (83, 57482), (93, 57536), (94, 57539), (98, 57560), (102, 57575), (103, 57596), (117, 57686), (124, 57734), (141, 57914),

Gene: Trypo_71 Start: 58035, Stop: 58742, Start Num: 49

Candidate Starts for Trypo_71:

(Start: 49 @58035 has 257 MA's), (72, 58125), (74, 58134), (75, 58140), (79, 58176), (80, 58182), (83, 58197), (93, 58251), (94, 58254), (98, 58275), (102, 58290), (103, 58311), (117, 58401), (124, 58449),

Gene: Tydolla_67 Start: 57917, Stop: 58513, Start Num: 57

Candidate Starts for Tydolla_67:

(Start: 57 @57917 has 45 MA's), (60, 57926), (69, 57959), (73, 57983), (88, 58076), (92, 58100), (94, 58109), (101, 58142), (102, 58145), (104, 58169), (108, 58199), (117, 58256), (123, 58295), (129, 58340),

Gene: TyrionL_70 Start: 57403, Stop: 58107, Start Num: 49

Candidate Starts for TyrionL_70:

(Start: 49 @57403 has 257 MA's), (72, 57493), (74, 57502), (79, 57544), (80, 57550), (83, 57565), (93, 57619), (94, 57622), (98, 57643), (102, 57658), (103, 57679), (117, 57769), (124, 57817), (141, 57997),

Gene: UAch1_71 Start: 57725, Stop: 58423, Start Num: 49

Candidate Starts for UAch1_71:

(Start: 49 @57725 has 257 MA's), (72, 57815), (74, 57824), (75, 57830), (79, 57866), (80, 57872), (83, 57887), (93, 57941), (94, 57944), (98, 57965), (102, 57980), (103, 58001), (117, 58091), (124, 58139),

Gene: UncleHowie_67 Start: 57005, Stop: 57712, Start Num: 49

Candidate Starts for UncleHowie_67:

(Start: 49 @57005 has 257 MA's), (72, 57095), (74, 57104), (75, 57110), (79, 57146), (80, 57152), (83, 57167), (93, 57221), (94, 57224), (98, 57245), (102, 57260), (103, 57281), (117, 57371), (124, 57419),

Gene: Usavi_71 Start: 58009, Stop: 58716, Start Num: 49

Candidate Starts for Usavi_71:

(Start: 49 @58009 has 257 MA's), (72, 58099), (74, 58108), (79, 58150), (80, 58156), (83, 58171), (93, 58225), (94, 58228), (98, 58249), (102, 58264), (103, 58285), (117, 58375), (124, 58423),

Gene: Vaishali24_71 Start: 57680, Stop: 58378, Start Num: 49

Candidate Starts for Vaishali24_71:

(Start: 49 @57680 has 257 MA's), (72, 57770), (74, 57779), (79, 57821), (80, 57827), (83, 57842), (93, 57896), (94, 57899), (98, 57920), (102, 57935), (103, 57956), (117, 58046), (124, 58094),

Gene: Valjean_69 Start: 57580, Stop: 58275, Start Num: 49

Candidate Starts for Valjean_69:

(Start: 49 @57580 has 257 MA's), (72, 57670), (74, 57679), (75, 57685), (79, 57721), (80, 57727), (83, 57742), (93, 57796), (94, 57799), (98, 57820), (102, 57835), (103, 57856), (117, 57946), (124, 57994), (141, 58174),

Gene: Vaticameos_67 Start: 55884, Stop: 56579, Start Num: 49

Candidate Starts for Vaticameos_67:

(Start: 49 @55884 has 257 MA's), (72, 55974), (74, 55983), (75, 55989), (79, 56025), (80, 56031), (83, 56046), (93, 56100), (94, 56103), (98, 56124), (102, 56139), (103, 56160), (117, 56250), (124, 56298), (141, 56478),

Gene: Veritas_69 Start: 57482, Stop: 58189, Start Num: 49

Candidate Starts for Veritas_69:

(Start: 49 @57482 has 257 MA's), (72, 57572), (74, 57581), (75, 57587), (79, 57623), (80, 57629), (83, 57644), (93, 57698), (94, 57701), (98, 57722), (102, 57737), (103, 57758), (117, 57848), (124, 57896),

Gene: Vincenzo_70 Start: 60825, Stop: 61445, Start Num: 46

Candidate Starts for Vincenzo_70:

(5, 60477), (17, 60576), (18, 60582), (21, 60621), (Start: 46 @60825 has 2 MA's), (73, 60921), (77, 60957), (79, 60969), (81, 60981), (94, 61047), (95, 61050), (103, 61104), (104, 61107), (108, 61137), (122, 61215), (129, 61278), (139, 61380),

Gene: VioletZ_69 Start: 59597, Stop: 60184, Start Num: 56

Candidate Starts for VioletZ_69:

(Start: 56 @59597 has 32 MA's), (65, 59627), (72, 59663), (73, 59666), (77, 59702), (86, 59753), (94, 59792), (95, 59795), (103, 59849), (104, 59852), (109, 59885), (111, 59894), (113, 59915), (122, 59960), (129, 60023),

Gene: Virapocalypse_71 Start: 57679, Stop: 58374, Start Num: 49

Candidate Starts for Virapocalypse_71:

(Start: 49 @57679 has 257 MA's), (72, 57769), (74, 57778), (75, 57784), (79, 57820), (80, 57826), (83, 57841), (93, 57895), (94, 57898), (98, 57919), (102, 57934), (103, 57955), (117, 58045), (124, 58093), (141, 58273),

Gene: Virgeve_68 Start: 57284, Stop: 57991, Start Num: 49

Candidate Starts for Virgeve_68:

(Start: 49 @57284 has 257 MA's), (72, 57374), (74, 57383), (75, 57389), (79, 57425), (80, 57431), (83, 57446), (93, 57500), (94, 57503), (98, 57524), (102, 57539), (103, 57560), (117, 57650), (124, 57698),

Gene: Vista_69 Start: 57480, Stop: 58187, Start Num: 49

Candidate Starts for Vista_69:

(Start: 49 @57480 has 257 MA's), (72, 57570), (74, 57579), (75, 57585), (79, 57621), (80, 57627), (83, 57642), (93, 57696), (94, 57699), (98, 57720), (102, 57735), (103, 57756), (117, 57846), (124, 57894),

Gene: Vivaldi_70 Start: 57767, Stop: 58474, Start Num: 49

Candidate Starts for Vivaldi_70:

(Start: 49 @57767 has 257 MA's), (72, 57857), (74, 57866), (75, 57872), (79, 57908), (80, 57914), (83, 57929), (93, 57983), (94, 57986), (98, 58007), (102, 58022), (103, 58043), (117, 58133), (124, 58181), (137, 58334),

Gene: Vortex_69 Start: 57590, Stop: 58297, Start Num: 49

Candidate Starts for Vortex_69:

(Start: 49 @57590 has 257 MA's), (72, 57680), (74, 57689), (75, 57695), (79, 57731), (80, 57737), (83, 57752), (93, 57806), (94, 57809), (98, 57830), (102, 57845), (103, 57866), (117, 57956), (124, 58004),

Gene: Waleliano_67 Start: 59486, Stop: 60073, Start Num: 56

Candidate Starts for Waleliano_67:

(30, 59351), (32, 59360), (Start: 56 @59486 has 32 MA's), (65, 59516), (72, 59552), (73, 59555), (77, 59591), (86, 59642), (94, 59681), (95, 59684), (103, 59738), (104, 59741), (109, 59774), (111, 59783), (120, 59840), (122, 59849), (129, 59912), (139, 60014),

Gene: Wallhey_71 Start: 57587, Stop: 58294, Start Num: 49

Candidate Starts for Wallhey_71:

(Start: 49 @57587 has 257 MA's), (72, 57677), (74, 57686), (75, 57692), (79, 57728), (80, 57734), (83, 57749), (93, 57803), (94, 57806), (98, 57827), (102, 57842), (103, 57863), (117, 57953), (124, 58001),

Gene: Waterdiva_71 Start: 57857, Stop: 58564, Start Num: 49

Candidate Starts for Waterdiva_71:

(Start: 49 @57857 has 257 MA's), (72, 57947), (74, 57956), (75, 57962), (79, 57998), (80, 58004), (83, 58019), (93, 58073), (94, 58076), (98, 58097), (102, 58112), (103, 58133), (117, 58223), (124, 58271),

Gene: Weher20_67 Start: 57925, Stop: 58632, Start Num: 49

Candidate Starts for Weher20_67:

(Start: 49 @57925 has 257 MA's), (72, 58015), (74, 58024), (75, 58030), (79, 58066), (80, 58072), (83, 58087), (93, 58141), (94, 58144), (98, 58165), (102, 58180), (103, 58201), (117, 58291), (124, 58339),

Gene: West99_66 Start: 56236, Stop: 56889, Start Num: 48

Candidate Starts for West99_66:

(6, 55882), (9, 55906), (13, 55945), (40, 56176), (Start: 48 @56236 has 30 MA's), (Start: 51 @56242 has 12 MA's), (67, 56290), (71, 56317), (76, 56347), (84, 56407), (90, 56431), (98, 56473), (100, 56479), (101, 56485), (103, 56509), (117, 56599), (132, 56755),

Gene: Windsor_70 Start: 57870, Stop: 58577, Start Num: 49

Candidate Starts for Windsor_70:

(Start: 49 @57870 has 257 MA's), (72, 57960), (74, 57969), (79, 58011), (80, 58017), (83, 58032), (93, 58086), (94, 58089), (98, 58110), (102, 58125), (103, 58146), (117, 58236), (124, 58284),

Gene: Wooper_66 Start: 52518, Stop: 53084, Start Num: 53

Candidate Starts for Wooper_66:

(Start: 53 @52518 has 6 MA's), (71, 52587), (81, 52656), (84, 52677), (86, 52683), (89, 52698), (94, 52722), (98, 52743), (107, 52809), (108, 52812), (110, 52821), (117, 52869), (119, 52875), (122, 52890), (129, 52953),

Gene: Xavier_70 Start: 57485, Stop: 58189, Start Num: 49

Candidate Starts for Xavier_70:

(Start: 49 @57485 has 257 MA's), (72, 57575), (74, 57584), (75, 57590), (79, 57626), (80, 57632), (83, 57647), (93, 57701), (94, 57704), (98, 57725), (102, 57740), (103, 57761), (117, 57851), (124, 57899), (141, 58079),

Gene: Yago84_61 Start: 51044, Stop: 51640, Start Num: 51

Candidate Starts for Yago84_61:

(Start: 51 @51044 has 12 MA's), (71, 51122), (79, 51179), (81, 51191), (84, 51212), (94, 51257), (98, 51278), (104, 51317), (107, 51344), (119, 51410), (122, 51425), (126, 51473), (129, 51488),

Gene: Yahalom_69 Start: 57728, Stop: 58327, Start Num: 57

Candidate Starts for Yahalom_69:

(Start: 57 @57728 has 45 MA's), (60, 57737), (61, 57743), (69, 57773), (73, 57797), (88, 57890), (92, 57914), (94, 57923), (101, 57956), (102, 57959), (104, 57983), (108, 58013), (117, 58070), (123, 58109), (129, 58154),

Gene: Yinz_71 Start: 57793, Stop: 58392, Start Num: 57

Candidate Starts for Yinz_71:

(Start: 57 @57793 has 45 MA's), (61, 57808), (73, 57862), (88, 57955), (92, 57979), (94, 57988), (101, 58021), (102, 58024), (104, 58048), (108, 58078), (117, 58135), (123, 58174),

Gene: Yoshand_71 Start: 57757, Stop: 58455, Start Num: 49

Candidate Starts for Yoshand_71:

(Start: 49 @57757 has 257 MA's), (72, 57847), (74, 57856), (79, 57898), (80, 57904), (83, 57919), (93, 57973), (94, 57976), (98, 57997), (102, 58012), (103, 58033), (117, 58123), (124, 58171), (137, 58324),

Gene: YouGoGlencoco_70 Start: 57595, Stop: 58302, Start Num: 49

Candidate Starts for YouGoGlencoco_70:

(Start: 49 @57595 has 257 MA's), (72, 57685), (74, 57694), (75, 57700), (79, 57736), (80, 57742), (83, 57757), (93, 57811), (94, 57814), (98, 57835), (102, 57850), (103, 57871), (117, 57961), (124, 58009),

Gene: Zaider_71 Start: 57820, Stop: 58515, Start Num: 49

Candidate Starts for Zaider_71:

(Start: 49 @57820 has 257 MA's), (72, 57910), (74, 57919), (75, 57925), (79, 57961), (80, 57967), (83, 57982), (93, 58036), (94, 58039), (98, 58060), (102, 58075), (103, 58096), (117, 58186), (124, 58234), (141, 58414),

Gene: Zelda_70 Start: 57935, Stop: 58642, Start Num: 49

Candidate Starts for Zelda_70:

(Start: 49 @57935 has 257 MA's), (72, 58025), (74, 58034), (75, 58040), (79, 58076), (80, 58082), (83, 58097), (93, 58151), (94, 58154), (98, 58175), (102, 58190), (103, 58211), (117, 58301), (124, 58349),

Gene: Zemanar_67 Start: 59384, Stop: 59971, Start Num: 56

Candidate Starts for Zemanar_67:

(30, 59249), (32, 59258), (Start: 56 @59384 has 32 MA's), (72, 59450), (73, 59453), (77, 59489), (86, 59540), (94, 59579), (95, 59582), (103, 59636), (104, 59639), (120, 59738), (122, 59747), (129, 59810), (139, 59912),

Gene: Zonia_71 Start: 58038, Stop: 58745, Start Num: 49

Candidate Starts for Zonia_71:

(Start: 49 @58038 has 257 MA's), (72, 58128), (74, 58137), (75, 58143), (79, 58179), (80, 58185), (83, 58200), (93, 58254), (94, 58257), (98, 58278), (102, 58293), (103, 58314), (117, 58404), (124, 58452),