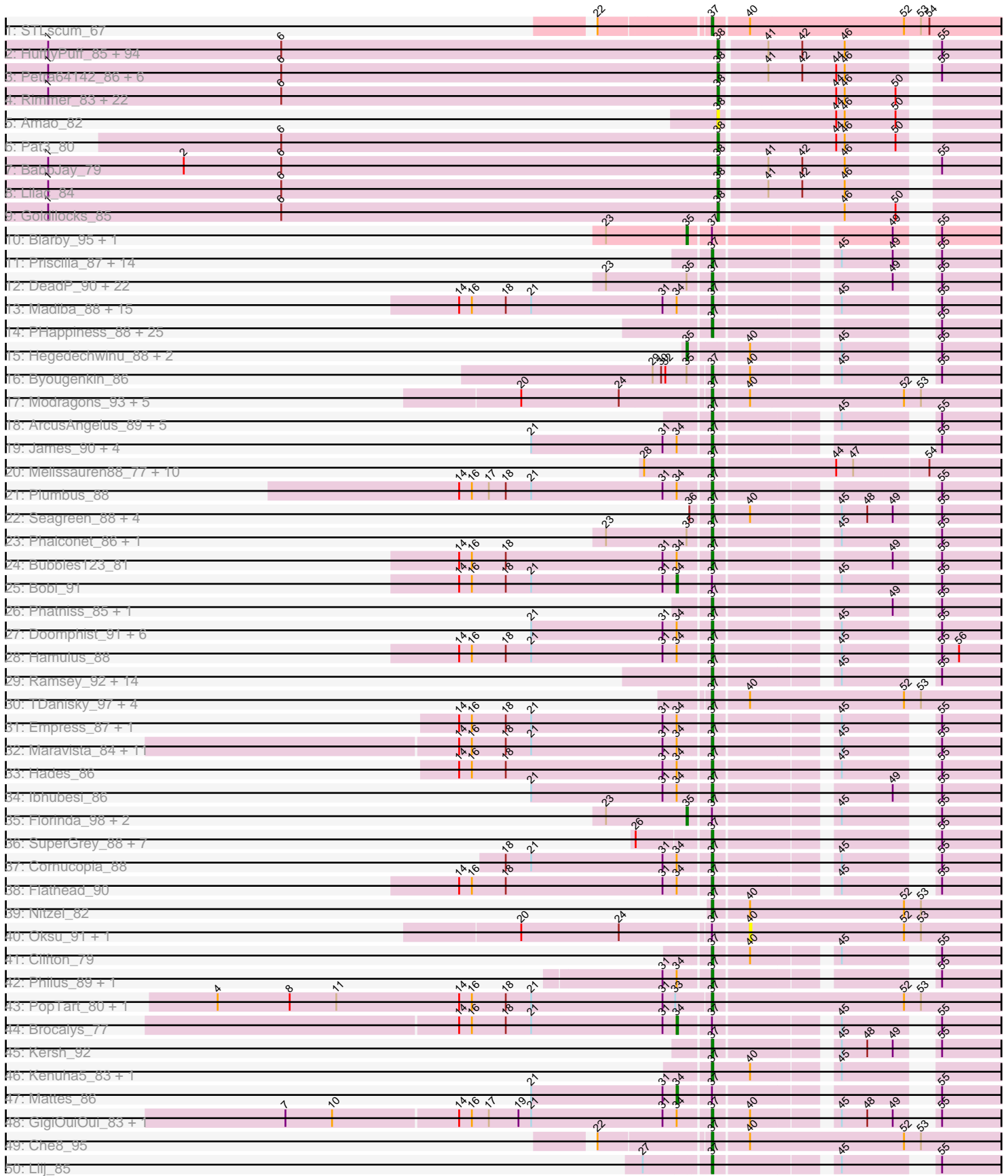
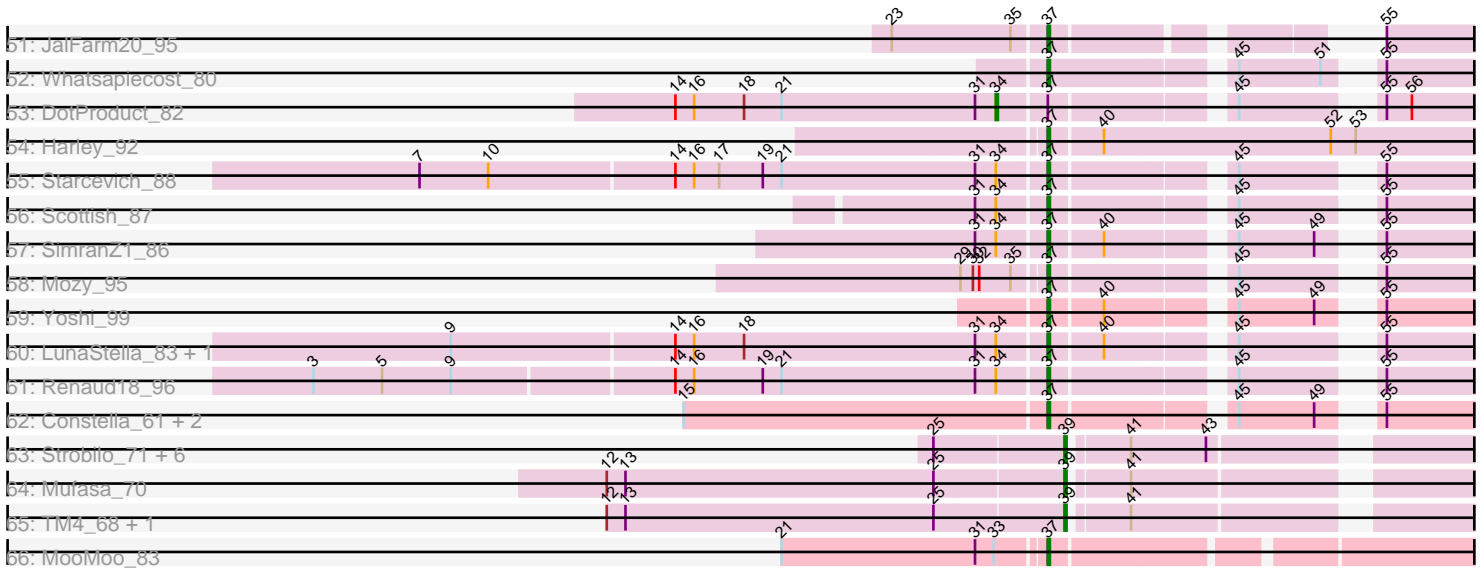


Pham 167920



Pham 167920



Note: Tracks are now grouped by subcluster and scaled. Switching in subcluster is indicated by changes in track color. Track scale is now set by default to display the region 30 bp upstream of start 1 to 30 bp downstream of the last possible start. If this default region is judged to be packed too tightly with annotated starts, the track will be further scaled to only show that region of the ORF with annotated starts. This action will be indicated by adding "Zoomed" to the title. For starts, yellow indicates the location of called starts comprised solely of Glimmer/GeneMark auto-annotations, green indicates the location of called starts with at least 1 manual gene annotation.

Pham 167920 Report

This analysis was run 07/09/24 on database version 566.

Pham number 167920 has 357 members, 20 are drafts.

Phages represented in each track:

- Track 1 : STLscum_67
- Track 2 : HuffyPuff_85, Lilizi_83, Palpatine_84, NelitzaMV_80, BugsBunny_82, StellaBean_80, Mindy_81, Inca_79, Kostya_82, Stank_85, Emmina_82, Moldemort_85, Bench_85, AmericanBeauty_89, Tomaszewski_77, Ukulele_77, Hopey_82, Lilpickle_81, 244_83, Misfit_83, SophKB_79, Pumpkin_85, Terminus_85, Sassay_77, Dusk_79, Goku_80, Cjw1_82, Buck_83, Asriel_81, BadStone_79, Elph10_82, Simpliphy_81, DrDrey_82, Xandras_81, PhatBacter_86, GooberAzure_85, Toto_80, MadamMonkfish_82, BilboSwaggins_81, TeardropMSU_78, Holt_87, Murica_85, JeTaime_82, Gemini_87, Adnama_86, IHOP_80, MPhalcon_83, Mosby_78, Nala_84, Porky_81, Filch_83, Czyszczonek1_83, ShereKhan_80, Maxxinista_84, FireRed_86, TBrady12_85, Qualification_83, Stark_83, RiverMonster_82, Easy2Say_83, Elite2014_81, Phrux_79, Eureka_80, Willez_77, Barbarian_81, xkcd_85, Murphy_82, Phaux_84, Bruin_79, HanKaySha_82, Contagion_78, Tuco_83, GoldenSpark_86, Traaww1_78, MISSy_83, Highbury_81, CrystalP_81, Thresher_84, Command613_84, ShamWow_82, ChosenOne_82, Marshmallow_80, Youngblood_85, Policronamos_86, Henry_80, Manda_83, Teaspoon_83, Nimrod_83, Wiggin_84, NoSleep_83, Argent26_86, OrionPax_81, ABCat_79, Saints25_81, Dumbo_82
- Track 3 : Petra64142_86, Miniwave_77, Phaja_80, Tarkin_81, YassJohnny_79, Pharsalus_79, Paperbeatsrock_81
- Track 4 : Rimmer_83, Cookies_79, SirDuracell_81, Sotrice96_83, Bask21_82, DoctorDiddles_81, ChotaBhai_82, Rakim_83, Myrale_82, Kanye_79, Balomoji_82, Cactus_85, Harella_82, Daikon_84, Icee_83, Hoonter_85, StolenFromERC_85, BigBubba_82, Flypotenuse_78, Glexan_81, Gator_80, Kimchi_86, Gage_84
- Track 5 : Amao_82
- Track 6 : Pat3_80
- Track 7 : BaboJay_79
- Track 8 : Lilac_84
- Track 9 : Goldilocks_85
- Track 10 : Blarby_95, UncleRicky_87
- Track 11 : Priscilla_87, VRedHorse_89, Martik_84, Dante_86, LunaBlu_91, BAKA_79, Duke13_77, Demsculpinboyz_100, Latretium_89, ShowerHandel_85, ByChance_76, Sandalphon_87, Koella_79, Sabbab_92, NormanBulbieJr_85
- Track 12 : DeadP_90, Jabbawokkie_95, Cerasum_83, Wee_94, Kingsley_93, Karhdo_84, PMC_85, BigPhil_82, Filuzino_89, DaWorst_87, Rockne_89, Drago_85, Taj_96, Lorde_88, DirtMcgirt_87, Velveteen_83, Shauna1_87, Coco12_86, Enby_89, DLane_87, Phanphagia_90, Sarma624_88, Zapner_94

- Track 13 : Madiba_88, PhesterPhotato_91, MilanaBonita_82, Batiatus_86, Royals2015_93, Hegedechwinu_96, IbOuu_84, Eish_93, Ardmore_73, Akhila_83, BlueCrab_89, Emma_91, Ms6_89, Soul22_88, StAnnes_92, XFactor_80
- Track 14 : PHappiness_88, Zerg_88, Geralt_81, Girr_86, QuickMath_89, Totinger_90, ShroomBoi_86, Leozinho_86, Veteran_81, LittleShirley_93, Nimbo_80, MisterCuddles_87, Mantra_86, RitaG_88, Krakatau_81, DillTech15_92, Tweety_89, SiSi_85, OldBen_85, Beakin_80, GUmbie_86, Ruby_84, Juice456_87, Deb65_81, Fastidio_87, Kimberlium_91
- Track 15 : Hegedechwinu_88, Spartacus_94, Galactic_88
- Track 16 : Byougenkin_86
- Track 17 : Modragons_93, AlpineSix_87, Seabastian_96, Llama_95, OfUltron_96, Ochi17_94
- Track 18 : ArcusAngelus_89, Wachhund_85, Whouxphf_88, Chevrolet_95, Mutaforma13_90, Firehouse51_83
- Track 19 : James_90, ShiLan_89, Jarcob_89, OlympiaSaint_89, Spoonbill_85
- Track 20 : Melissauren88_77, Squirty_88, Radiance_84, SG4_90, KristaRAM_88, Aubs_88, BodEinwohner17_96, Leperchaun_89, ThetaBob_89, JoeyJr_91, Stap_84
- Track 21 : Plumbus_88
- Track 22 : Seagreen_88, Strokeseat_85, Mandlovu_85, Ovechkin_93, Hlubikazi_85
- Track 23 : Phalconet_86, Mova_91
- Track 24 : Bubbles123_81
- Track 25 : Bobi_91
- Track 26 : Phatniss_85, EleanorGeorge_89
- Track 27 : Doomphist_91, Zizzle_90, Guppsters_81, Polka14_92, Poenanya_91, Tootsieroll_83, KingMidas_87
- Track 28 : Hamulus_88
- Track 29 : Ramsey_92, Eradicator_80, OwlsT2W_87, Ogotogo_93, BuzzLyseyear_96, Fruitloop_88, DaddyRickover_91, Pacc40_84, Yorick_80, Phasih_84, MinionDave_86, CaptainTrips_90, Nivrat_86, Job42_88, LilMoolah_88
- Track 30 : TDanisky_97, Rialto_93, Pollywog_89, Sparkdehlily_96, Moonbeam_90
- Track 31 : Empress_87, MilleniumForce_88
- Track 32 : Maravista_84, Cabrinians_83, Crumble_82, Pippy_82, Saal_83, Gorge_85, FreddyB_95, SwagPiggett_88, LastJedi_77, Burwell21_81, BobaPhett_87, Lizziana_88
- Track 33 : Hades_86
- Track 34 : Ibhubesi_86
- Track 35 : Florinda_98, Girafales_95, Quico_95
- Track 36 : SuperGrey_88, WillSterrel_86, MadMen_93, Doug_85, Gandalph_87, Bipolar_89, IrishSherpFalk_87, Blexus_84
- Track 37 : Cornucopia_88
- Track 38 : Flathead_90
- Track 39 : Nitzel_82
- Track 40 : Oksu_91, Jinglebell_93
- Track 41 : Clifton_79
- Track 42 : Philus_89, DRBy19_90
- Track 43 : PopTart_80, SassyB_80
- Track 44 : Brocalys_77
- Track 45 : Kersh_92
- Track 46 : Kenuha5_83, Donkeykong_94
- Track 47 : Mattes_86
- Track 48 : GigiOuiOui_83, Alexphander_90
- Track 49 : Che8_95
- Track 50 : Llij_85

- Track 51 : JalFarm20_95
- Track 52 : Whatsapiecost_80
- Track 53 : DotProduct_82
- Track 54 : Harley_92
- Track 55 : Starcevich_88
- Track 56 : Scottish_87
- Track 57 : SimranZ1_86
- Track 58 : Mozy_95
- Track 59 : Yoshi_99
- Track 60 : LunaStella_83, TChen_85
- Track 61 : Renaud18_96
- Track 62 : Constella_61, Estave1_96, Avani_93
- Track 63 : Strobilo_71, Marcoliusprime_70, DismalStressor_70, ZoeJ_69, Findley_70, DismalFunk_70, Milly_70
- Track 64 : Mufasa_70
- Track 65 : TM4_68, BoostSeason_70
- Track 66 : MooMoo_83

Summary of Final Annotations (See graph section above for start numbers):

The start number called the most often in the published annotations is 37, it was called in 194 of the 337 non-draft genes in the pham.

Genes that call this "Most Annotated" start:

- Akhila_83, Alexphander_90, AlpineSix_87, ArcusAngelus_89, Ardmore_73, Aubs_88, Avani_93, BAKA_79, Batiatus_86, Beakin_80, BigPhil_82, Bipolar_89, Blexus_84, BlueCrab_89, BobaPhett_87, BodEinwohner17_96, Bubbles123_81, Burwell21_81, BuzzLyseyear_96, ByChance_76, Byougenkin_86, Cabrinians_83, CaptainTrips_90, Cerasum_83, Che8_95, Chevrolet_95, Clifton_79, Coco12_86, Constella_61, Cornucopia_88, Crumble_82, DLane_87, DRBy19_90, DaWorst_87, DaddyRickover_91, Dante_86, DeadP_90, Deb65_81, Demsculpinboyz_100, DillTech15_92, DirtMcgirt_87, Donkeykong_94, Doomphist_91, Doug_85, Drago_85, Duke13_77, Eish_93, EleanorGeorge_89, Emma_91, Empress_87, Enby_89, Eradicator_80, Estave1_96, Fastidio_87, Filuzino_89, Firehouse51_83, Flathead_90, FreddyB_95, Fruitloop_88, GUmbie_86, Gandolph_87, Geralt_81, GigiOuiOui_83, Girr_86, Gorge_85, Guppsters_81, Hades_86, Hamulus_88, Harley_92, Hegedechwinu_96, Hlubikazi_85, IbOuu_84, Ihubesi_86, IrishSherpFalk_87, Jabbawokkie_95, JalFarm20_95, James_90, Jarcob_89, Job42_88, JoeyJr_91, Juice456_87, Karhdo_84, Kenuha5_83, Kersh_92, Kimberlium_91, KingMidas_87, Kingsley_93, Koella_79, Krakatau_81, KristaRAM_88, LastJedi_77, Latretium_89, Leozinho_86, Leperchaun_89, LilMoolah_88, LittleShirley_93, Lizziana_88, Llama_95, Llij_85, Lorde_88, LunaBlu_91, LunaStella_83, MadMen_93, Madiba_88, Mandlovu_85, Mantra_86, Maravista_84, Martik_84, Melissauren88_77, MilanaBonita_82, MilleniumForce_88, MinionDave_86, MisterCuddles_87, Modragons_93, MooMoo_83, Moonbeam_90, Mova_91, Mozy_95, Ms6_89, Mutaforma13_90, Nimbo_80, Nitzel_82, Nivrat_86, NormanBulbieJr_85, Ochi17_94, OfUltron_96, Ogopogo_93, OldBen_85, OlympiaSaint_89, Ovechkin_93, OwlsT2W_87, PHappiness_88, PMC_85, Pacc40_84, Phalconet_86, Phanphagia_90, Phasih_84, Phatniss_85, PhesterPotato_91, Philus_89, Pippy_82, Plumbus_88, Poenanya_91, Polka14_92, Pollywog_89, PopTart_80, Priscilla_87,

QuickMath_89, Radiance_84, Ramsey_92, Renaud18_96, Rialto_93, RitaG_88, Rockne_89, Royals2015_93, Ruby_84, SG4_90, STLscum_67, Saal_83, Sabbb_92, Sandalphon_87, Sarma624_88, SassyB_80, Scottish_87, Seabastian_96, Seagreen_88, Shauna1_87, ShiLan_89, ShowerHandel_85, ShroomBoi_86, SiSi_85, SimranZ1_86, Soul22_88, Sparkdehlily_96, Spoonbill_85, Squirty_88, StAnnes_92, Stap_84, Starcevich_88, Strokeseat_85, SuperGrey_88, SwagPigglett_88, TChen_85, TDanisky_97, Taj_96, ThetaBob_89, Tootsieroll_83, Totinger_90, Tweety_89, VRedHorse_89, Velveteen_83, Veteran_81, Wachhund_85, Wee_94, Whatsapiecost_80, Whouxphf_88, WillSterrel_86, XFactor_80, Yorick_80, Yoshi_99, Zapner_94, Zerg_88, Zizzle_90,

Genes that have the "Most Annotated" start but do not call it:

- Blarby_95, Bobi_91, Brocalys_77, DotProduct_82, Florinda_98, Girafales_95, Jinglebell_93, Mattes_86, Oksu_91, Quico_95, UncleRicky_87,

Genes that do not have the "Most Annotated" start:

- 244_83, ABCat_79, Adnama_86, Amao_82, AmericanBeauty_89, Argent26_86, Asriel_81, BaboJay_79, BadStone_79, Balomoji_82, Barbarian_81, Bask21_82, Bench_85, BigBubba_82, BilboSwaggins_81, BoostSeason_70, Bruin_79, Buck_83, BugsBunny_82, Cactus_85, ChosenOne_82, ChotaBhai_82, Cjw1_82, Command613_84, Contagion_78, Cookies_79, CrystalP_81, Czystczon1_83, Daikon_84, DismalFunk_70, DismalStressor_70, DoctorDiddles_81, DrDrey_82, Dumbo_82, Dusk_79, Easy2Say_83, Elite2014_81, Elph10_82, Emmina_82, Eureka_80, Filch_83, Findley_70, FireRed_86, Flypotenuse_78, Gage_84, Galactic_88, Gator_80, Gemini_87, Glexan_81, Goku_80, GoldenSpark_86, Goldilocks_85, GooberAzure_85, HanKaySha_82, Harella_82, Hegedechwinu_88, Henry_80, Highbury_81, Holt_87, Hoonter_85, Hopey_82, HufflyPuff_85, IHOP_80, Icee_83, Inca_79, JeTaime_82, Kanye_79, Kimchi_86, Kostya_82, Lilac_84, Lilizi_83, Lilpickle_81, MISSy_83, MPhalcon_83, MadamMonkfish_82, Manda_83, Marcoliusprime_70, Marshmallow_80, Maxxinista_84, Milly_70, Mindy_81, Miniwave_77, Misfit_83, Moldemort_85, Mosby_78, Mufasa_70, Murica_85, Murphy_82, Myrale_82, Nala_84, NelitzaMV_80, Nimrod_83, NoSleep_83, OrionPax_81, Palpatine_84, Paperbeatsrock_81, Pat3_80, Petra64142_86, Phaja_80, Pharsalus_79, PhatBacter_86, Phaux_84, Phrux_79, Policronamos_86, Porky_81, Pumpkin_85, Quallification_83, Rakim_83, Rimmer_83, RiverMonster_82, Saints25_81, Sassay_77, ShamWow_82, ShereKhan_80, Simpliphy_81, SirDuracell_81, SophKB_79, Sotrice96_83, Spartacus_94, Stank_85, Stark_83, StellaBean_80, StolenFromERC_85, Strobilo_71, TBrady12_85, TM4_68, Tarkin_81, TeardropMSU_78, Teaspoon_83, Terminus_85, Thresher_84, Tomaszewski_77, Toto_80, Traaww1_78, Tuco_83, Ukulele_77, Wiggins_84, Willez_77, Xandras_81, YassJohnny_79, Youngblood_85, ZoeJ_69, xkcd_85,

Summary by start number:

Start 34:

- Found in 63 of 357 (17.6%) of genes in pham
- Manual Annotations of this start: 4 of 337
- Called 6.3% of time when present
- Phage (with cluster) where this start called: Bobi_91 (F1), Brocalys_77 (F1), DotProduct_82 (F1), Mattes_86 (F1),

Start 35:

- Found in 36 of 357 (10.1%) of genes in pham

- Manual Annotations of this start: 7 of 337
- Called 22.2% of time when present
- Phage (with cluster) where this start called: Blarby_95 (F), Florinda_98 (F1), Galactic_88 (F1), Girafales_95 (F1), Hegedechwinu_88 (F1), Quico_95 (F1), Spartacus_94 (F1), UncleRicky_87 (F1),

Start 37:

- Found in 214 of 357 (59.9%) of genes in pham
- Manual Annotations of this start: 194 of 337
- Called 94.9% of time when present
- Phage (with cluster) where this start called: Akhila_83 (F1), Alexphander_90 (F1), AlpineSix_87 (F1), ArcusAngelus_89 (F1), Ardmore_73 (F1), Aubs_88 (F1), Avani_93 (F2), BAKA_79 (J), Batiatus_86 (F1), Beakin_80 (F1), BigPhil_82 (F1), Bipolar_89 (F1), Blexus_84 (F1), BlueCrab_89 (F1), BobaPhett_87 (F1), BodEinwohner17_96 (F1), Bubbles123_81 (F1), Burwell21_81 (F1), BuzzLyseyear_96 (F1), ByChance_76 (F1), Byougenkin_86 (F1), Cabrinians_83 (F1), CaptainTrips_90 (F1), Cerasum_83 (F1), Che8_95 (F1), Chevrolet_95 (F1), Clifton_79 (F1), Coco12_86 (F1), Constella_61 (J), Cornucopia_88 (F1), Crumble_82 (F1), DLane_87 (F1), DRBy19_90 (F1), DaWorst_87 (F1), DaddyRickover_91 (F1), Dante_86 (F1), DeadP_90 (F1), Deb65_81 (F1), Demsculpinboyz_100 (F2), DillTech15_92 (F1), DirtMcgirt_87 (F1), Donkeykong_94 (F1), Doomphist_91 (F1), Doug_85 (F1), Drago_85 (F1), Duke13_77 (J), Eish_93 (F1), EleanorGeorge_89 (F1), Emma_91 (F1), Empress_87 (F1), Enby_89 (F1), Eradicator_80 (F1), Estave1_96 (F1), Fastidio_87 (F1), Filuzino_89 (F1), Firehouse51_83 (F1), Flathead_90 (F1), FreddyB_95 (F1), Fruitloop_88 (F1), GUmbie_86 (F1), Gandolph_87 (F1), Geralt_81 (F1), GigiOuiOui_83 (F1), Girr_86 (F1), Gorge_85 (F1), Guppsters_81 (F1), Hades_86 (F1), Hamulus_88 (F1), Harley_92 (F1), Hegedechwinu_96 (F1), Hlubikazi_85 (F1), IbOuu_84 (F1), Ibhubesi_86 (F1), IrishSherpFalk_87 (F1), Jabbawokkie_95 (F2), JalFarm20_95 (F1), James_90 (F1), Jarcob_89 (F1), Job42_88 (F1), JoeyJr_91 (F1), Juice456_87 (F1), Karhdo_84 (F1), Kenuha5_83 (F1), Kersh_92 (F1), Kimberlium_91 (F1), KingMidas_87 (F1), Kingsley_93 (F1), Koella_79 (F1), Krakatau_81 (F1), KristaRAM_88 (F1), LastJedi_77 (F1), Latretium_89 (F1), Leozinho_86 (F1), Leperchaun_89 (F1), LilMoolah_88 (F1), LittleShirley_93 (F1), Lizziana_88 (F1), Llama_95 (F1), Llij_85 (F1), Lorde_88 (F1), LunaBlu_91 (F1), LunaStella_83 (F4), MadMen_93 (F1), Madiba_88 (F1), Mandlovu_85 (F1), Mantra_86 (F1), Maravista_84 (F1), Martik_84 (F1), Melissauren88_77 (F1), MilanaBonita_82 (F1), MilleniumForce_88 (F1), MinionDave_86 (F1), MisterCuddles_87 (F1), Modragons_93 (F1), MooMoo_83 (singleton), Moonbeam_90 (F1), Mova_91 (F1), Mozy_95 (F1), Ms6_89 (F1), Mutaforma13_90 (F1), Nimbo_80 (F1), Nitzel_82 (F1), Nivrat_86 (F1), NormanBulbieJr_85 (F1), Ochi17_94 (F1), OfUltron_96 (F1), Ogoopogo_93 (F1), OldBen_85 (F1), OlympiaSaint_89 (F1), Ovechkin_93 (F1), OwlsT2W_87 (F1), PHappiness_88 (F1), PMC_85 (F1), Pacc40_84 (F1), Phalconet_86 (F1), Phanphagia_90 (F1), Phasih_84 (F1), Phatniss_85 (F1), PhesterPhotato_91 (F1), Philus_89 (F1), Pippy_82 (F1), Plumbus_88 (F1), Poenanya_91 (F1), Polka14_92 (F1), Pollywog_89 (F1), PopTart_80 (F1), Priscilla_87 (F1), QuickMath_89 (F1), Radiance_84 (F1), Ramsey_92 (F1), Renaud18_96 (F4), Rialto_93 (F1), RitaG_88 (F1), Rockne_89 (F1), Royals2015_93 (F1), Ruby_84 (F1), SG4_90 (F1), STLscum_67 (A1), Saal_83 (F1), Sabbb_92 (F1), Sandalphon_87 (F1), Sarma624_88 (F1), SassyB_80 (F1), Scottish_87 (F1), Seabastian_96 (F1), Seagreen_88 (F1), Shauna1_87 (F1), ShiLan_89 (F1), ShowerHandel_85 (F1), ShroomBoi_86 (F1), SiSi_85 (F1), SimranZ1_86 (F1), Soul22_88 (F2), Sparkdehlily_96 (F1), Spoonbill_85 (F1), Squirty_88 (F3), StAnnes_92 (F1), Stap_84

(F1), Starcevich_88 (F1), Strokeseat_85 (F1), SuperGrey_88 (F1), SwagPiggett_88 (F1), TChen_85 (F4), TDanisky_97 (F1), Taj_96 (F1), ThetaBob_89 (F4), Tootsieroll_83 (F1), Totinger_90 (F1), Tweety_89 (F1), VRedHorse_89 (F1), Velveteen_83 (F1), Veteran_81 (F1), Wachhund_85 (F1), Wee_94 (F1), Whatsapiecost_80 (F1), Whouxphf_88 (F1), WillSterrel_86 (F1), XFactor_80 (F1), Yorick_80 (F1), Yoshi_99 (F2), Zapner_94 (F2), Zerg_88 (F1), Zizzle_90 (F1),

Start 38:

- Found in 130 of 357 (36.4%) of genes in pham
- Manual Annotations of this start: 122 of 337
- Called 100.0% of time when present
- Phage (with cluster) where this start called: 244_83 (E), ABCat_79 (E), Adnama_86 (E), Amao_82 (E), AmericanBeauty_89 (E), Argent26_86 (E), Asriel_81 (E), BaboJay_79 (E), BadStone_79 (E), Balomoji_82 (E), Barbarian_81 (E), Bask21_82 (E), Bench_85 (E), BigBubba_82 (E), BilboSwaggins_81 (E), Bruin_79 (E), Buck_83 (E), BugsBunny_82 (E), Cactus_85 (E), ChosenOne_82 (E), ChotaBhai_82 (E), Cjw1_82 (E), Command613_84 (E), Contagion_78 (E), Cookies_79 (E), CrystalP_81 (E), Czyszczonek_83 (E), Daikon_84 (E), DoctorDiddles_81 (E), DrDrey_82 (E), Dumbo_82 (E), Dusk_79 (E), Easy2Say_83 (E), Elite2014_81 (E), Elph10_82 (E), Emmina_82 (E), Eureka_80 (E), Filch_83 (E), FireRed_86 (E), Flypotenuse_78 (E), Gage_84 (E), Gator_80 (E), Gemini_87 (E), Glexan_81 (E), Goku_80 (E), GoldenSpark_86 (E), Goldilocks_85 (E), GooberAzure_85 (E), HanKaySha_82 (E), Harella_82 (E), Henry_80 (E), Highbury_81 (E), Holt_87 (E), Hoonter_85 (E), Hopey_82 (E), HufflyPuff_85 (E), IHOP_80 (E), Icee_83 (E), Inca_79 (E), JeTaimie_82 (E), Kanye_79 (E), Kimchi_86 (E), Kostya_82 (E), Lilac_84 (E), Lilizi_83 (E), Lilpickle_81 (E), MISSy_83 (E), MPhalcon_83 (E), MadamMonkfish_82 (E), Manda_83 (E), Marshmallow_80 (E), Maxxinista_84 (E), Mindy_81 (E), Miniwave_77 (E), Misfit_83 (E), Moldemort_85 (E), Mosby_78 (E), Murica_85 (E), Murphy_82 (E), Myrale_82 (E), Nala_84 (E), NelitzaMV_80 (E), Nimrod_83 (E), NoSleep_83 (E), OrionPax_81 (E), Palpatine_84 (E), Paperbeatsrock_81 (E), Pat3_80 (E), Petra64142_86 (E), Phaja_80 (E), Pharsalus_79 (E), PhatBacter_86 (E), Phaux_84 (E), Phrux_79 (E), Policronamos_86 (E), Porky_81 (E), Pumpkin_85 (E), Quallification_83 (E), Rakim_83 (E), Rimmer_83 (E), RiverMonster_82 (E), Saints25_81 (E), Sassay_77 (E), ShamWow_82 (E), ShereKhan_80 (E), Simpliphy_81 (E), SirDuracell_81 (E), SophKB_79 (E), Sotrice96_83 (E), Stank_85 (E), Stark_83 (E), StellaBean_80 (E), StolenFromERC_85 (E), TBrady12_85 (E), Tarkin_81 (E), TeardropMSU_78 (E), Teaspoon_83 (E), Terminus_85 (E), Thresher_84 (E), Tomaszewski_77 (E), Toto_80 (E), Traaww1_78 (E), Tuco_83 (E), Ukulele_77 (E), Wiggin_84 (E), Willez_77 (E), Xandras_81 (E), YassJohnny_79 (E), Youngblood_85 (E), xkcd_85 (E),

Start 39:

- Found in 10 of 357 (2.8%) of genes in pham
- Manual Annotations of this start: 10 of 337
- Called 100.0% of time when present
- Phage (with cluster) where this start called: BoostSeason_70 (K2), DismalFunk_70 (K2), DismalStressor_70 (K2), Findley_70 (K2), Marcoliusprime_70 (K2), Milly_70 (K2), Mufasa_70 (K2), Strobilo_71 (K2), TM4_68 (K2), ZoeJ_69 (K2),

Start 40:

- Found in 35 of 357 (9.8%) of genes in pham
- No Manual Annotations of this start.
- Called 5.7% of time when present

- Phage (with cluster) where this start called: Jinglebell_93 (F1), Oksu_91 (F1),

Summary by clusters:

There are 10 clusters represented in this pham: F1, F2, F3, F4, F, J, singleton, A1, K2, E,

Info for manual annotations of cluster A1:

- Start number 37 was manually annotated 1 time for cluster A1.

Info for manual annotations of cluster E:

- Start number 38 was manually annotated 122 times for cluster E.

Info for manual annotations of cluster F1:

- Start number 34 was manually annotated 4 times for cluster F1.
- Start number 35 was manually annotated 7 times for cluster F1.
- Start number 37 was manually annotated 178 times for cluster F1.

Info for manual annotations of cluster F2:

- Start number 37 was manually annotated 6 times for cluster F2.

Info for manual annotations of cluster F3:

- Start number 37 was manually annotated 1 time for cluster F3.

Info for manual annotations of cluster F4:

- Start number 37 was manually annotated 4 times for cluster F4.

Info for manual annotations of cluster J:

- Start number 37 was manually annotated 3 times for cluster J.

Info for manual annotations of cluster K2:

- Start number 39 was manually annotated 10 times for cluster K2.

Gene Information:

Gene: 244_83 Start: 51383, Stop: 51571, Start Num: 38

Candidate Starts for 244_83:

(1, 50909), (6, 51074), (Start: 38 @51383 has 122 MA's), (41, 51413), (42, 51437), (46, 51467), (55, 51518),

Gene: ABCat_79 Start: 51736, Stop: 51924, Start Num: 38

Candidate Starts for ABCat_79:

(1, 51262), (6, 51427), (Start: 38 @51736 has 122 MA's), (41, 51766), (42, 51790), (46, 51820), (55, 51871),

Gene: Adnama_86 Start: 51759, Stop: 51947, Start Num: 38

Candidate Starts for Adnama_86:

(1, 51285), (6, 51450), (Start: 38 @51759 has 122 MA's), (41, 51789), (42, 51813), (46, 51843), (55, 51894),

Gene: Akhila_83 Start: 49346, Stop: 49525, Start Num: 37

Candidate Starts for Akhila_83:

(14, 49172), (16, 49181), (18, 49205), (21, 49223), (31, 49316), (Start: 34 @49325 has 4 MA's), (Start: 37 @49346 has 194 MA's), (45, 49421), (55, 49472),

Gene: Alexphander_90 Start: 51762, Stop: 51941, Start Num: 37

Candidate Starts for Alexphander_90:

(7, 51468), (10, 51501), (14, 51588), (16, 51597), (17, 51609), (19, 51630), (21, 51639), (31, 51732), (Start: 34 @51741 has 4 MA's), (Start: 37 @51762 has 194 MA's), (40, 51786), (45, 51837), (48, 51855), (49, 51873), (55, 51888),

Gene: AlpineSix_87 Start: 50112, Stop: 50324, Start Num: 37

Candidate Starts for AlpineSix_87:

(20, 49983), (24, 50052), (Start: 37 @50112 has 194 MA's), (40, 50136), (52, 50244), (53, 50256),

Gene: Amao_82 Start: 51153, Stop: 51341, Start Num: 38

Candidate Starts for Amao_82:

(Start: 38 @51153 has 122 MA's), (44, 51231), (46, 51237), (50, 51273),

Gene: AmericanBeauty_89 Start: 51905, Stop: 52093, Start Num: 38

Candidate Starts for AmericanBeauty_89:

(1, 51431), (6, 51596), (Start: 38 @51905 has 122 MA's), (41, 51935), (42, 51959), (46, 51989), (55, 52040),

Gene: ArcusAngelus_89 Start: 51558, Stop: 51737, Start Num: 37

Candidate Starts for ArcusAngelus_89:

(Start: 37 @51558 has 194 MA's), (45, 51633), (55, 51684),

Gene: Ardmore_73 Start: 45470, Stop: 45649, Start Num: 37

Candidate Starts for Ardmore_73:

(14, 45296), (16, 45305), (18, 45329), (21, 45347), (31, 45440), (Start: 34 @45449 has 4 MA's), (Start: 37 @45470 has 194 MA's), (45, 45545), (55, 45596),

Gene: Argent26_86 Start: 51543, Stop: 51731, Start Num: 38

Candidate Starts for Argent26_86:

(1, 51069), (6, 51234), (Start: 38 @51543 has 122 MA's), (41, 51573), (42, 51597), (46, 51627), (55, 51678),

Gene: Asriel_81 Start: 50096, Stop: 50284, Start Num: 38

Candidate Starts for Asriel_81:

(1, 49622), (6, 49787), (Start: 38 @50096 has 122 MA's), (41, 50126), (42, 50150), (46, 50180), (55, 50231),

Gene: Aubs_88 Start: 51536, Stop: 51745, Start Num: 37

Candidate Starts for Aubs_88:

(28, 51488), (Start: 37 @51536 has 194 MA's), (44, 51620), (47, 51632), (54, 51683),

Gene: Avani_93 Start: 48223, Stop: 48402, Start Num: 37

Candidate Starts for Avani_93:

(15, 48052), (Start: 37 @48223 has 194 MA's), (45, 48298), (49, 48334), (55, 48349),

Gene: BAKA_79 Start: 51643, Stop: 51464, Start Num: 37

Candidate Starts for BAKA_79:

(Start: 37 @51643 has 194 MA's), (45, 51568), (49, 51532), (55, 51517),

Gene: BaboJay_79 Start: 50936, Stop: 51139, Start Num: 38

Candidate Starts for BaboJay_79:

(1, 50462), (2, 50558), (6, 50627), (Start: 38 @50936 has 122 MA's), (41, 50966), (42, 50990), (46, 51020), (55, 51071),

Gene: BadStone_79 Start: 51305, Stop: 51493, Start Num: 38

Candidate Starts for BadStone_79:

(1, 50831), (6, 50996), (Start: 38 @51305 has 122 MA's), (41, 51335), (42, 51359), (46, 51389), (55, 51440),

Gene: Balomoji_82 Start: 51866, Stop: 52054, Start Num: 38

Candidate Starts for Balomoji_82:

(1, 51392), (6, 51557), (Start: 38 @51866 has 122 MA's), (44, 51944), (46, 51950), (50, 51986),

Gene: Barbarian_81 Start: 50096, Stop: 50284, Start Num: 38

Candidate Starts for Barbarian_81:

(1, 49622), (6, 49787), (Start: 38 @50096 has 122 MA's), (41, 50126), (42, 50150), (46, 50180), (55, 50231),

Gene: Bask21_82 Start: 50719, Stop: 50907, Start Num: 38

Candidate Starts for Bask21_82:

(1, 50245), (6, 50410), (Start: 38 @50719 has 122 MA's), (44, 50797), (46, 50803), (50, 50839),

Gene: Batiatus_86 Start: 50344, Stop: 50523, Start Num: 37

Candidate Starts for Batiatus_86:

(14, 50170), (16, 50179), (18, 50203), (21, 50221), (31, 50314), (Start: 34 @50323 has 4 MA's), (Start: 37 @50344 has 194 MA's), (45, 50419), (55, 50470),

Gene: Beakin_80 Start: 47095, Stop: 47274, Start Num: 37

Candidate Starts for Beakin_80:

(Start: 37 @47095 has 194 MA's), (55, 47221),

Gene: Bench_85 Start: 51400, Stop: 51588, Start Num: 38

Candidate Starts for Bench_85:

(1, 50926), (6, 51091), (Start: 38 @51400 has 122 MA's), (41, 51430), (42, 51454), (46, 51484), (55, 51535),

Gene: BigBubba_82 Start: 51112, Stop: 51300, Start Num: 38

Candidate Starts for BigBubba_82:

(1, 50638), (6, 50803), (Start: 38 @51112 has 122 MA's), (44, 51190), (46, 51196), (50, 51232),

Gene: BigPhil_82 Start: 46962, Stop: 47141, Start Num: 37

Candidate Starts for BigPhil_82:

(23, 46890), (Start: 35 @46947 has 7 MA's), (Start: 37 @46962 has 194 MA's), (49, 47073), (55, 47088),

Gene: BilboSwaggins_81 Start: 51741, Stop: 51929, Start Num: 38

Candidate Starts for BilboSwaggins_81:

(1, 51267), (6, 51432), (Start: 38 @51741 has 122 MA's), (41, 51771), (42, 51795), (46, 51825), (55, 51876),

Gene: Bipolar_89 Start: 52261, Stop: 52440, Start Num: 37
Candidate Starts for Bipolar_89:
(26, 52213), (Start: 37 @52261 has 194 MA's), (55, 52387),

Gene: Blarby_95 Start: 48975, Stop: 49169, Start Num: 35
Candidate Starts for Blarby_95:
(23, 48918), (Start: 35 @48975 has 7 MA's), (Start: 37 @48990 has 194 MA's), (49, 49101), (55, 49116),

Gene: Blexus_84 Start: 50870, Stop: 51049, Start Num: 37
Candidate Starts for Blexus_84:
(26, 50822), (Start: 37 @50870 has 194 MA's), (55, 50996),

Gene: BlueCrab_89 Start: 51554, Stop: 51733, Start Num: 37
Candidate Starts for BlueCrab_89:
(14, 51380), (16, 51389), (18, 51413), (21, 51431), (31, 51524), (Start: 34 @51533 has 4 MA's), (Start: 37 @51554 has 194 MA's), (45, 51629), (55, 51680),

Gene: BobaPhett_87 Start: 52286, Stop: 52465, Start Num: 37
Candidate Starts for BobaPhett_87:
(14, 52112), (16, 52121), (18, 52145), (21, 52163), (31, 52256), (Start: 34 @52265 has 4 MA's), (Start: 37 @52286 has 194 MA's), (45, 52361), (55, 52412),

Gene: Bobi_91 Start: 52068, Stop: 52268, Start Num: 34
Candidate Starts for Bobi_91:
(14, 51915), (16, 51924), (18, 51948), (21, 51966), (31, 52059), (Start: 34 @52068 has 4 MA's), (Start: 37 @52089 has 194 MA's), (45, 52164), (55, 52215),

Gene: BodEinwohner17_96 Start: 53328, Stop: 53537, Start Num: 37
Candidate Starts for BodEinwohner17_96:
(28, 53280), (Start: 37 @53328 has 194 MA's), (44, 53412), (47, 53424), (54, 53475),

Gene: BoostSeason_70 Start: 45912, Stop: 46079, Start Num: 39
Candidate Starts for BoostSeason_70:
(12, 45696), (13, 45705), (25, 45852), (Start: 39 @45912 has 10 MA's), (41, 45936),

Gene: Brocalys_77 Start: 47745, Stop: 47945, Start Num: 34
Candidate Starts for Brocalys_77:
(14, 47592), (16, 47601), (18, 47625), (21, 47643), (31, 47736), (Start: 34 @47745 has 4 MA's), (Start: 37 @47766 has 194 MA's), (45, 47841), (55, 47892),

Gene: Bruin_79 Start: 50279, Stop: 50467, Start Num: 38
Candidate Starts for Bruin_79:
(1, 49805), (6, 49970), (Start: 38 @50279 has 122 MA's), (41, 50309), (42, 50333), (46, 50363), (55, 50414),

Gene: Bubbles123_81 Start: 50063, Stop: 50242, Start Num: 37
Candidate Starts for Bubbles123_81:
(14, 49889), (16, 49898), (18, 49922), (31, 50033), (Start: 34 @50042 has 4 MA's), (Start: 37 @50063 has 194 MA's), (49, 50174), (55, 50189),

Gene: Buck_83 Start: 51984, Stop: 52172, Start Num: 38
Candidate Starts for Buck_83:

(1, 51510), (6, 51675), (Start: 38 @51984 has 122 MA's), (41, 52014), (42, 52038), (46, 52068), (55, 52119),

Gene: BugsBunny_82 Start: 51808, Stop: 51996, Start Num: 38

Candidate Starts for BugsBunny_82:

(1, 51334), (6, 51499), (Start: 38 @51808 has 122 MA's), (41, 51838), (42, 51862), (46, 51892), (55, 51943),

Gene: Burwell21_81 Start: 50052, Stop: 50231, Start Num: 37

Candidate Starts for Burwell21_81:

(14, 49878), (16, 49887), (18, 49911), (21, 49929), (31, 50022), (Start: 34 @50031 has 4 MA's), (Start: 37 @50052 has 194 MA's), (45, 50127), (55, 50178),

Gene: BuzzLyseyear_96 Start: 53526, Stop: 53705, Start Num: 37

Candidate Starts for BuzzLyseyear_96:

(Start: 37 @53526 has 194 MA's), (45, 53601), (55, 53652),

Gene: ByChance_76 Start: 45678, Stop: 45857, Start Num: 37

Candidate Starts for ByChance_76:

(Start: 37 @45678 has 194 MA's), (45, 45753), (49, 45789), (55, 45804),

Gene: Byougenkin_86 Start: 48273, Stop: 48452, Start Num: 37

Candidate Starts for Byougenkin_86:

(29, 48237), (30, 48243), (32, 48246), (Start: 35 @48261 has 7 MA's), (Start: 37 @48273 has 194 MA's), (40, 48297), (45, 48348), (55, 48399),

Gene: Cabrinians_83 Start: 49686, Stop: 49865, Start Num: 37

Candidate Starts for Cabrinians_83:

(14, 49512), (16, 49521), (18, 49545), (21, 49563), (31, 49656), (Start: 34 @49665 has 4 MA's), (Start: 37 @49686 has 194 MA's), (45, 49761), (55, 49812),

Gene: Cactus_85 Start: 50760, Stop: 50948, Start Num: 38

Candidate Starts for Cactus_85:

(1, 50286), (6, 50451), (Start: 38 @50760 has 122 MA's), (44, 50838), (46, 50844), (50, 50880),

Gene: CaptainTrips_90 Start: 50975, Stop: 51154, Start Num: 37

Candidate Starts for CaptainTrips_90:

(Start: 37 @50975 has 194 MA's), (45, 51050), (55, 51101),

Gene: Cerasum_83 Start: 46980, Stop: 47159, Start Num: 37

Candidate Starts for Cerasum_83:

(23, 46908), (Start: 35 @46965 has 7 MA's), (Start: 37 @46980 has 194 MA's), (49, 47091), (55, 47106),

Gene: Che8_95 Start: 52189, Stop: 52401, Start Num: 37

Candidate Starts for Che8_95:

(22, 52117), (Start: 37 @52189 has 194 MA's), (40, 52213), (52, 52321), (53, 52333),

Gene: Chevrolet_95 Start: 51559, Stop: 51738, Start Num: 37

Candidate Starts for Chevrolet_95:

(Start: 37 @51559 has 194 MA's), (45, 51634), (55, 51685),

Gene: ChosenOne_82 Start: 50760, Stop: 50948, Start Num: 38

Candidate Starts for ChosenOne_82:

(1, 50286), (6, 50451), (Start: 38 @50760 has 122 MA's), (41, 50790), (42, 50814), (46, 50844), (55, 50895),

Gene: ChotaBhai_82 Start: 51084, Stop: 51272, Start Num: 38

Candidate Starts for ChotaBhai_82:

(1, 50610), (6, 50775), (Start: 38 @51084 has 122 MA's), (44, 51162), (46, 51168), (50, 51204),

Gene: Cjw1_82 Start: 52454, Stop: 52642, Start Num: 38

Candidate Starts for Cjw1_82:

(1, 51980), (6, 52145), (Start: 38 @52454 has 122 MA's), (41, 52484), (42, 52508), (46, 52538), (55, 52589),

Gene: Clifton_79 Start: 48858, Stop: 49037, Start Num: 37

Candidate Starts for Clifton_79:

(Start: 37 @48858 has 194 MA's), (40, 48882), (45, 48933), (55, 48984),

Gene: Coco12_86 Start: 51037, Stop: 51216, Start Num: 37

Candidate Starts for Coco12_86:

(23, 50965), (Start: 35 @51022 has 7 MA's), (Start: 37 @51037 has 194 MA's), (49, 51148), (55, 51163),

Gene: Command613_84 Start: 51799, Stop: 51987, Start Num: 38

Candidate Starts for Command613_84:

(1, 51325), (6, 51490), (Start: 38 @51799 has 122 MA's), (41, 51829), (42, 51853), (46, 51883), (55, 51934),

Gene: Constella_61 Start: 45314, Stop: 45135, Start Num: 37

Candidate Starts for Constella_61:

(15, 45485), (Start: 37 @45314 has 194 MA's), (45, 45239), (49, 45203), (55, 45188),

Gene: Contagion_78 Start: 50560, Stop: 50748, Start Num: 38

Candidate Starts for Contagion_78:

(1, 50086), (6, 50251), (Start: 38 @50560 has 122 MA's), (41, 50590), (42, 50614), (46, 50644), (55, 50695),

Gene: Cookies_79 Start: 50941, Stop: 51129, Start Num: 38

Candidate Starts for Cookies_79:

(1, 50467), (6, 50632), (Start: 38 @50941 has 122 MA's), (44, 51019), (46, 51025), (50, 51061),

Gene: Cornucopia_88 Start: 49212, Stop: 49391, Start Num: 37

Candidate Starts for Cornucopia_88:

(18, 49071), (21, 49089), (31, 49182), (Start: 34 @49191 has 4 MA's), (Start: 37 @49212 has 194 MA's), (45, 49287), (55, 49338),

Gene: Crumble_82 Start: 46411, Stop: 46590, Start Num: 37

Candidate Starts for Crumble_82:

(14, 46237), (16, 46246), (18, 46270), (21, 46288), (31, 46381), (Start: 34 @46390 has 4 MA's), (Start: 37 @46411 has 194 MA's), (45, 46486), (55, 46537),

Gene: CrystalP_81 Start: 51741, Stop: 51929, Start Num: 38

Candidate Starts for CrystalP_81:

(1, 51267), (6, 51432), (Start: 38 @51741 has 122 MA's), (41, 51771), (42, 51795), (46, 51825), (55, 51876),

Gene: Czyszczone1_83 Start: 51263, Stop: 51451, Start Num: 38

Candidate Starts for Czyszczone1_83:

(1, 50789), (6, 50954), (Start: 38 @51263 has 122 MA's), (41, 51293), (42, 51317), (46, 51347), (55, 51398),

Gene: DLane_87 Start: 51666, Stop: 51845, Start Num: 37

Candidate Starts for DLane_87:

(23, 51594), (Start: 35 @51651 has 7 MA's), (Start: 37 @51666 has 194 MA's), (49, 51777), (55, 51792),

Gene: DRBy19_90 Start: 52394, Stop: 52573, Start Num: 37

Candidate Starts for DRBy19_90:

(31, 52364), (Start: 34 @52373 has 4 MA's), (Start: 37 @52394 has 194 MA's), (55, 52520),

Gene: DaWorst_87 Start: 49979, Stop: 50158, Start Num: 37

Candidate Starts for DaWorst_87:

(23, 49907), (Start: 35 @49964 has 7 MA's), (Start: 37 @49979 has 194 MA's), (49, 50090), (55, 50105),

Gene: DaddyRickover_91 Start: 51901, Stop: 52080, Start Num: 37

Candidate Starts for DaddyRickover_91:

(Start: 37 @51901 has 194 MA's), (45, 51976), (55, 52027),

Gene: Daikon_84 Start: 51887, Stop: 52075, Start Num: 38

Candidate Starts for Daikon_84:

(1, 51413), (6, 51578), (Start: 38 @51887 has 122 MA's), (44, 51965), (46, 51971), (50, 52007),

Gene: Dante_86 Start: 52237, Stop: 52416, Start Num: 37

Candidate Starts for Dante_86:

(Start: 37 @52237 has 194 MA's), (45, 52312), (49, 52348), (55, 52363),

Gene: DeadP_90 Start: 50061, Stop: 50240, Start Num: 37

Candidate Starts for DeadP_90:

(23, 49989), (Start: 35 @50046 has 7 MA's), (Start: 37 @50061 has 194 MA's), (49, 50172), (55, 50187),

Gene: Deb65_81 Start: 49784, Stop: 49963, Start Num: 37

Candidate Starts for Deb65_81:

(Start: 37 @49784 has 194 MA's), (55, 49910),

Gene: Demsculpinboyz_100 Start: 50162, Stop: 50341, Start Num: 37

Candidate Starts for Demsculpinboyz_100:

(Start: 37 @50162 has 194 MA's), (45, 50237), (49, 50273), (55, 50288),

Gene: DillTech15_92 Start: 50171, Stop: 50350, Start Num: 37

Candidate Starts for DillTech15_92:

(Start: 37 @50171 has 194 MA's), (55, 50297),

Gene: DirtMcgirt_87 Start: 48038, Stop: 48217, Start Num: 37

Candidate Starts for DirtMcgirt_87:

(23, 47966), (Start: 35 @48023 has 7 MA's), (Start: 37 @48038 has 194 MA's), (49, 48149), (55, 48164),

Gene: DismalFunk_70 Start: 46337, Stop: 46504, Start Num: 39
Candidate Starts for DismalFunk_70:
(25, 46277), (Start: 39 @46337 has 10 MA's), (41, 46361), (43, 46397),

Gene: DismalStressor_70 Start: 46337, Stop: 46504, Start Num: 39
Candidate Starts for DismalStressor_70:
(25, 46277), (Start: 39 @46337 has 10 MA's), (41, 46361), (43, 46397),

Gene: DoctorDiddles_81 Start: 51128, Stop: 51316, Start Num: 38
Candidate Starts for DoctorDiddles_81:
(1, 50654), (6, 50819), (Start: 38 @51128 has 122 MA's), (44, 51206), (46, 51212), (50, 51248),

Gene: Donkeykong_94 Start: 52976, Stop: 53158, Start Num: 37
Candidate Starts for Donkeykong_94:
(Start: 37 @52976 has 194 MA's), (40, 53003), (45, 53054),

Gene: Doomphist_91 Start: 51481, Stop: 51660, Start Num: 37
Candidate Starts for Doomphist_91:
(21, 51358), (31, 51451), (Start: 34 @51460 has 4 MA's), (Start: 37 @51481 has 194 MA's), (45, 51556), (55, 51607),

Gene: DotProduct_82 Start: 48547, Stop: 48747, Start Num: 34
Candidate Starts for DotProduct_82:
(14, 48394), (16, 48403), (18, 48427), (21, 48445), (31, 48538), (Start: 34 @48547 has 4 MA's), (Start: 37 @48568 has 194 MA's), (45, 48643), (55, 48694), (56, 48706),

Gene: Doug_85 Start: 51570, Stop: 51749, Start Num: 37
Candidate Starts for Doug_85:
(26, 51522), (Start: 37 @51570 has 194 MA's), (55, 51696),

Gene: DrDrey_82 Start: 52182, Stop: 52370, Start Num: 38
Candidate Starts for DrDrey_82:
(1, 51708), (6, 51873), (Start: 38 @52182 has 122 MA's), (41, 52212), (42, 52236), (46, 52266), (55, 52317),

Gene: Drago_85 Start: 48041, Stop: 48220, Start Num: 37
Candidate Starts for Drago_85:
(23, 47969), (Start: 35 @48026 has 7 MA's), (Start: 37 @48041 has 194 MA's), (49, 48152), (55, 48167),

Gene: Duke13_77 Start: 50855, Stop: 50676, Start Num: 37
Candidate Starts for Duke13_77:
(Start: 37 @50855 has 194 MA's), (45, 50780), (49, 50744), (55, 50729),

Gene: Dumbo_82 Start: 50665, Stop: 50853, Start Num: 38
Candidate Starts for Dumbo_82:
(1, 50191), (6, 50356), (Start: 38 @50665 has 122 MA's), (41, 50695), (42, 50719), (46, 50749), (55, 50800),

Gene: Dusk_79 Start: 50965, Stop: 51153, Start Num: 38

Candidate Starts for Dusk_79:

(1, 50491), (6, 50656), (Start: 38 @50965 has 122 MA's), (41, 50995), (42, 51019), (46, 51049), (55, 51100),

Gene: Easy2Say_83 Start: 52206, Stop: 52394, Start Num: 38

Candidate Starts for Easy2Say_83:

(1, 51732), (6, 51897), (Start: 38 @52206 has 122 MA's), (41, 52236), (42, 52260), (46, 52290), (55, 52341),

Gene: Eish_93 Start: 52092, Stop: 52271, Start Num: 37

Candidate Starts for Eish_93:

(14, 51918), (16, 51927), (18, 51951), (21, 51969), (31, 52062), (Start: 34 @52071 has 4 MA's), (Start: 37 @52092 has 194 MA's), (45, 52167), (55, 52218),

Gene: EleanorGeorge_89 Start: 51749, Stop: 51928, Start Num: 37

Candidate Starts for EleanorGeorge_89:

(Start: 37 @51749 has 194 MA's), (49, 51860), (55, 51875),

Gene: Elite2014_81 Start: 50759, Stop: 50947, Start Num: 38

Candidate Starts for Elite2014_81:

(1, 50285), (6, 50450), (Start: 38 @50759 has 122 MA's), (41, 50789), (42, 50813), (46, 50843), (55, 50894),

Gene: Elph10_82 Start: 50761, Stop: 50949, Start Num: 38

Candidate Starts for Elph10_82:

(1, 50287), (6, 50452), (Start: 38 @50761 has 122 MA's), (41, 50791), (42, 50815), (46, 50845), (55, 50896),

Gene: Emma_91 Start: 49790, Stop: 49969, Start Num: 37

Candidate Starts for Emma_91:

(14, 49616), (16, 49625), (18, 49649), (21, 49667), (31, 49760), (Start: 34 @49769 has 4 MA's), (Start: 37 @49790 has 194 MA's), (45, 49865), (55, 49916),

Gene: Emmina_82 Start: 50663, Stop: 50851, Start Num: 38

Candidate Starts for Emmina_82:

(1, 50189), (6, 50354), (Start: 38 @50663 has 122 MA's), (41, 50693), (42, 50717), (46, 50747), (55, 50798),

Gene: Empress_87 Start: 50476, Stop: 50655, Start Num: 37

Candidate Starts for Empress_87:

(14, 50302), (16, 50311), (18, 50335), (21, 50353), (31, 50446), (Start: 34 @50455 has 4 MA's), (Start: 37 @50476 has 194 MA's), (45, 50551), (55, 50602),

Gene: Enby_89 Start: 48317, Stop: 48496, Start Num: 37

Candidate Starts for Enby_89:

(23, 48245), (Start: 35 @48302 has 7 MA's), (Start: 37 @48317 has 194 MA's), (49, 48428), (55, 48443),

Gene: Eradicator_80 Start: 48972, Stop: 49151, Start Num: 37

Candidate Starts for Eradicator_80:

(Start: 37 @48972 has 194 MA's), (45, 49047), (55, 49098),

Gene: Estave1_96 Start: 54581, Stop: 54760, Start Num: 37

Candidate Starts for Estave1_96:

(15, 54410), (Start: 37 @54581 has 194 MA's), (45, 54656), (49, 54692), (55, 54707),

Gene: Eureka_80 Start: 51227, Stop: 51430, Start Num: 38

Candidate Starts for Eureka_80:

(1, 50753), (6, 50918), (Start: 38 @51227 has 122 MA's), (41, 51257), (42, 51281), (46, 51311), (55, 51362),

Gene: Fastidio_87 Start: 48066, Stop: 48245, Start Num: 37

Candidate Starts for Fastidio_87:

(Start: 37 @48066 has 194 MA's), (55, 48192),

Gene: Filch_83 Start: 50688, Stop: 50876, Start Num: 38

Candidate Starts for Filch_83:

(1, 50214), (6, 50379), (Start: 38 @50688 has 122 MA's), (41, 50718), (42, 50742), (46, 50772), (55, 50823),

Gene: Filuzino_89 Start: 52975, Stop: 53154, Start Num: 37

Candidate Starts for Filuzino_89:

(23, 52903), (Start: 35 @52960 has 7 MA's), (Start: 37 @52975 has 194 MA's), (49, 53086), (55, 53101),

Gene: Findley_70 Start: 46331, Stop: 46498, Start Num: 39

Candidate Starts for Findley_70:

(25, 46271), (Start: 39 @46331 has 10 MA's), (41, 46355), (43, 46391),

Gene: FireRed_86 Start: 52253, Stop: 52441, Start Num: 38

Candidate Starts for FireRed_86:

(1, 51779), (6, 51944), (Start: 38 @52253 has 122 MA's), (41, 52283), (42, 52307), (46, 52337), (55, 52388),

Gene: Firehouse51_83 Start: 51603, Stop: 51785, Start Num: 37

Candidate Starts for Firehouse51_83:

(Start: 37 @51603 has 194 MA's), (45, 51681), (55, 51732),

Gene: Flathead_90 Start: 50924, Stop: 51103, Start Num: 37

Candidate Starts for Flathead_90:

(14, 50750), (16, 50759), (18, 50783), (31, 50894), (Start: 34 @50903 has 4 MA's), (Start: 37 @50924 has 194 MA's), (45, 50999), (55, 51050),

Gene: Florinda_98 Start: 52463, Stop: 52657, Start Num: 35

Candidate Starts for Florinda_98:

(23, 52406), (Start: 35 @52463 has 7 MA's), (Start: 37 @52478 has 194 MA's), (45, 52553), (55, 52604),

Gene: Flypotenuse_78 Start: 50750, Stop: 50938, Start Num: 38

Candidate Starts for Flypotenuse_78:

(1, 50276), (6, 50441), (Start: 38 @50750 has 122 MA's), (44, 50828), (46, 50834), (50, 50870),

Gene: FreddyB_95 Start: 51333, Stop: 51512, Start Num: 37

Candidate Starts for FreddyB_95:

(14, 51159), (16, 51168), (18, 51192), (21, 51210), (31, 51303), (Start: 34 @51312 has 4 MA's), (Start: 37 @51333 has 194 MA's), (45, 51408), (55, 51459),

Gene: Fruitloop_88 Start: 52115, Stop: 52294, Start Num: 37

Candidate Starts for Fruitloop_88:

(Start: 37 @52115 has 194 MA's), (45, 52190), (55, 52241),

Gene: GUmbie_86 Start: 50787, Stop: 50966, Start Num: 37

Candidate Starts for GUmbie_86:

(Start: 37 @50787 has 194 MA's), (55, 50913),

Gene: Gage_84 Start: 51543, Stop: 51731, Start Num: 38

Candidate Starts for Gage_84:

(1, 51069), (6, 51234), (Start: 38 @51543 has 122 MA's), (44, 51621), (46, 51627), (50, 51663),

Gene: Galactic_88 Start: 50334, Stop: 50525, Start Num: 35

Candidate Starts for Galactic_88:

(Start: 35 @50334 has 7 MA's), (40, 50370), (45, 50421), (55, 50472),

Gene: Gandolph_87 Start: 48105, Stop: 48284, Start Num: 37

Candidate Starts for Gandolph_87:

(26, 48057), (Start: 37 @48105 has 194 MA's), (55, 48231),

Gene: Gator_80 Start: 51593, Stop: 51781, Start Num: 38

Candidate Starts for Gator_80:

(1, 51119), (6, 51284), (Start: 38 @51593 has 122 MA's), (44, 51671), (46, 51677), (50, 51713),

Gene: Gemini_87 Start: 52060, Stop: 52248, Start Num: 38

Candidate Starts for Gemini_87:

(1, 51586), (6, 51751), (Start: 38 @52060 has 122 MA's), (41, 52090), (42, 52114), (46, 52144), (55, 52195),

Gene: Geralt_81 Start: 49782, Stop: 49961, Start Num: 37

Candidate Starts for Geralt_81:

(Start: 37 @49782 has 194 MA's), (55, 49908),

Gene: GigiOuiOui_83 Start: 49914, Stop: 50093, Start Num: 37

Candidate Starts for GigiOuiOui_83:

(7, 49620), (10, 49653), (14, 49740), (16, 49749), (17, 49761), (19, 49782), (21, 49791), (31, 49884), (Start: 34 @49893 has 4 MA's), (Start: 37 @49914 has 194 MA's), (40, 49938), (45, 49989), (48, 50007), (49, 50025), (55, 50040),

Gene: Girafales_95 Start: 52068, Stop: 52262, Start Num: 35

Candidate Starts for Girafales_95:

(23, 52011), (Start: 35 @52068 has 7 MA's), (Start: 37 @52083 has 194 MA's), (45, 52158), (55, 52209),

Gene: Girr_86 Start: 51179, Stop: 51358, Start Num: 37

Candidate Starts for Girr_86:

(Start: 37 @51179 has 194 MA's), (55, 51305),

Gene: Glexan_81 Start: 51880, Stop: 52068, Start Num: 38

Candidate Starts for Glexan_81:

(1, 51406), (6, 51571), (Start: 38 @51880 has 122 MA's), (44, 51958), (46, 51964), (50, 52000),

Gene: Goku_80 Start: 50956, Stop: 51159, Start Num: 38

Candidate Starts for Goku_80:

(1, 50482), (6, 50647), (Start: 38 @50956 has 122 MA's), (41, 50986), (42, 51010), (46, 51040), (55, 51091),

Gene: GoldenSpark_86 Start: 51543, Stop: 51731, Start Num: 38

Candidate Starts for GoldenSpark_86:

(1, 51069), (6, 51234), (Start: 38 @51543 has 122 MA's), (41, 51573), (42, 51597), (46, 51627), (55, 51678),

Gene: Goldilocks_85 Start: 51038, Stop: 51226, Start Num: 38

Candidate Starts for Goldilocks_85:

(1, 50564), (6, 50729), (Start: 38 @51038 has 122 MA's), (46, 51122), (50, 51158),

Gene: GooberAzure_85 Start: 51543, Stop: 51731, Start Num: 38

Candidate Starts for GooberAzure_85:

(1, 51069), (6, 51234), (Start: 38 @51543 has 122 MA's), (41, 51573), (42, 51597), (46, 51627), (55, 51678),

Gene: Gorge_85 Start: 50960, Stop: 51139, Start Num: 37

Candidate Starts for Gorge_85:

(14, 50786), (16, 50795), (18, 50819), (21, 50837), (31, 50930), (Start: 34 @50939 has 4 MA's), (Start: 37 @50960 has 194 MA's), (45, 51035), (55, 51086),

Gene: Guppsters_81 Start: 48017, Stop: 48196, Start Num: 37

Candidate Starts for Guppsters_81:

(21, 47894), (31, 47987), (Start: 34 @47996 has 4 MA's), (Start: 37 @48017 has 194 MA's), (45, 48092), (55, 48143),

Gene: Hades_86 Start: 48507, Stop: 48686, Start Num: 37

Candidate Starts for Hades_86:

(14, 48333), (16, 48342), (18, 48366), (31, 48477), (Start: 34 @48486 has 4 MA's), (Start: 37 @48507 has 194 MA's), (45, 48582), (55, 48633),

Gene: Hamulus_88 Start: 50433, Stop: 50612, Start Num: 37

Candidate Starts for Hamulus_88:

(14, 50259), (16, 50268), (18, 50292), (21, 50310), (31, 50403), (Start: 34 @50412 has 4 MA's), (Start: 37 @50433 has 194 MA's), (45, 50508), (55, 50559), (56, 50571),

Gene: HanKaySha_82 Start: 50841, Stop: 51029, Start Num: 38

Candidate Starts for HanKaySha_82:

(1, 50367), (6, 50532), (Start: 38 @50841 has 122 MA's), (41, 50871), (42, 50895), (46, 50925), (55, 50976),

Gene: Harella_82 Start: 52396, Stop: 52584, Start Num: 38

Candidate Starts for Harella_82:

(1, 51922), (6, 52087), (Start: 38 @52396 has 122 MA's), (44, 52474), (46, 52480), (50, 52516),

Gene: Harley_92 Start: 51737, Stop: 51949, Start Num: 37

Candidate Starts for Harley_92:

(Start: 37 @51737 has 194 MA's), (40, 51761), (52, 51869), (53, 51881),

Gene: Hegedechwinu_88 Start: 49433, Stop: 49624, Start Num: 35

Candidate Starts for Hegedechwinu_88:

(Start: 35 @49433 has 7 MA's), (40, 49469), (45, 49520), (55, 49571),

Gene: Hegedechwinu_96 Start: 51479, Stop: 51658, Start Num: 37

Candidate Starts for Hegedechwinu_96:

(14, 51305), (16, 51314), (18, 51338), (21, 51356), (31, 51449), (Start: 34 @51458 has 4 MA's), (Start: 37 @51479 has 194 MA's), (45, 51554), (55, 51605),

Gene: Henry_80 Start: 51181, Stop: 51369, Start Num: 38

Candidate Starts for Henry_80:

(1, 50707), (6, 50872), (Start: 38 @51181 has 122 MA's), (41, 51211), (42, 51235), (46, 51265), (55, 51316),

Gene: Highbury_81 Start: 50832, Stop: 51020, Start Num: 38

Candidate Starts for Highbury_81:

(1, 50358), (6, 50523), (Start: 38 @50832 has 122 MA's), (41, 50862), (42, 50886), (46, 50916), (55, 50967),

Gene: Hlubikazi_85 Start: 48622, Stop: 48801, Start Num: 37

Candidate Starts for Hlubikazi_85:

(36, 48610), (Start: 37 @48622 has 194 MA's), (40, 48646), (45, 48697), (48, 48715), (49, 48733), (55, 48748),

Gene: Holt_87 Start: 51957, Stop: 52145, Start Num: 38

Candidate Starts for Holt_87:

(1, 51483), (6, 51648), (Start: 38 @51957 has 122 MA's), (41, 51987), (42, 52011), (46, 52041), (55, 52092),

Gene: Hoonter_85 Start: 51540, Stop: 51728, Start Num: 38

Candidate Starts for Hoonter_85:

(1, 51066), (6, 51231), (Start: 38 @51540 has 122 MA's), (44, 51618), (46, 51624), (50, 51660),

Gene: Hopey_82 Start: 51373, Stop: 51561, Start Num: 38

Candidate Starts for Hopey_82:

(1, 50899), (6, 51064), (Start: 38 @51373 has 122 MA's), (41, 51403), (42, 51427), (46, 51457), (55, 51508),

Gene: HufflyPuff_85 Start: 52206, Stop: 52394, Start Num: 38

Candidate Starts for HufflyPuff_85:

(1, 51732), (6, 51897), (Start: 38 @52206 has 122 MA's), (41, 52236), (42, 52260), (46, 52290), (55, 52341),

Gene: IHOP_80 Start: 51305, Stop: 51493, Start Num: 38

Candidate Starts for IHOP_80:

(1, 50831), (6, 50996), (Start: 38 @51305 has 122 MA's), (41, 51335), (42, 51359), (46, 51389), (55, 51440),

Gene: lbOuu_84 Start: 48764, Stop: 48943, Start Num: 37

Candidate Starts for lbOuu_84:

(14, 48590), (16, 48599), (18, 48623), (21, 48641), (31, 48734), (Start: 34 @48743 has 4 MA's), (Start: 37 @48764 has 194 MA's), (45, 48839), (55, 48890),

Gene: lbhubesi_86 Start: 48818, Stop: 48997, Start Num: 37

Candidate Starts for Ibhubesi_86:

(21, 48695), (31, 48788), (Start: 34 @48797 has 4 MA's), (Start: 37 @48818 has 194 MA's), (49, 48929), (55, 48944),

Gene: Icee_83 Start: 51207, Stop: 51395, Start Num: 38

Candidate Starts for Icee_83:

(1, 50733), (6, 50898), (Start: 38 @51207 has 122 MA's), (44, 51285), (46, 51291), (50, 51327),

Gene: Inca_79 Start: 49833, Stop: 50021, Start Num: 38

Candidate Starts for Inca_79:

(1, 49359), (6, 49524), (Start: 38 @49833 has 122 MA's), (41, 49863), (42, 49887), (46, 49917), (55, 49968),

Gene: IrishSherpFalk_87 Start: 51061, Stop: 51240, Start Num: 37

Candidate Starts for IrishSherpFalk_87:

(26, 51013), (Start: 37 @51061 has 194 MA's), (55, 51187),

Gene: Jabbawokkie_95 Start: 48910, Stop: 49089, Start Num: 37

Candidate Starts for Jabbawokkie_95:

(23, 48838), (Start: 35 @48895 has 7 MA's), (Start: 37 @48910 has 194 MA's), (49, 49021), (55, 49036),

Gene: JalFarm20_95 Start: 51589, Stop: 51753, Start Num: 37

Candidate Starts for JalFarm20_95:

(23, 51517), (Start: 35 @51574 has 7 MA's), (Start: 37 @51589 has 194 MA's), (55, 51700),

Gene: James_90 Start: 52478, Stop: 52657, Start Num: 37

Candidate Starts for James_90:

(21, 52355), (31, 52448), (Start: 34 @52457 has 4 MA's), (Start: 37 @52478 has 194 MA's), (55, 52604),

Gene: Jacob_89 Start: 52077, Stop: 52256, Start Num: 37

Candidate Starts for Jacob_89:

(21, 51954), (31, 52047), (Start: 34 @52056 has 4 MA's), (Start: 37 @52077 has 194 MA's), (55, 52203),

Gene: JeTaime_82 Start: 52022, Stop: 52210, Start Num: 38

Candidate Starts for JeTaime_82:

(1, 51548), (6, 51713), (Start: 38 @52022 has 122 MA's), (41, 52052), (42, 52076), (46, 52106), (55, 52157),

Gene: Jinglebell_93 Start: 52033, Stop: 52221, Start Num: 40

Candidate Starts for Jinglebell_93:

(20, 51880), (24, 51949), (Start: 37 @52009 has 194 MA's), (40, 52033), (52, 52141), (53, 52153),

Gene: Job42_88 Start: 53278, Stop: 53457, Start Num: 37

Candidate Starts for Job42_88:

(Start: 37 @53278 has 194 MA's), (45, 53353), (55, 53404),

Gene: JoeyJr_91 Start: 52607, Stop: 52816, Start Num: 37

Candidate Starts for JoeyJr_91:

(28, 52559), (Start: 37 @52607 has 194 MA's), (44, 52691), (47, 52703), (54, 52754),

Gene: Juice456_87 Start: 50688, Stop: 50867, Start Num: 37

Candidate Starts for Juice456_87:

(Start: 37 @50688 has 194 MA's), (55, 50814),

Gene: Kanye_79 Start: 50889, Stop: 51077, Start Num: 38

Candidate Starts for Kanye_79:

(1, 50415), (6, 50580), (Start: 38 @50889 has 122 MA's), (44, 50967), (46, 50973), (50, 51009),

Gene: Karhdo_84 Start: 48593, Stop: 48772, Start Num: 37

Candidate Starts for Karhdo_84:

(23, 48521), (Start: 35 @48578 has 7 MA's), (Start: 37 @48593 has 194 MA's), (49, 48704), (55, 48719),

Gene: Kenuha5_83 Start: 51021, Stop: 51203, Start Num: 37

Candidate Starts for Kenuha5_83:

(Start: 37 @51021 has 194 MA's), (40, 51048), (45, 51099),

Gene: Kersh_92 Start: 53467, Stop: 53646, Start Num: 37

Candidate Starts for Kersh_92:

(Start: 37 @53467 has 194 MA's), (45, 53542), (48, 53560), (49, 53578), (55, 53593),

Gene: Kimberlium_91 Start: 50788, Stop: 50967, Start Num: 37

Candidate Starts for Kimberlium_91:

(Start: 37 @50788 has 194 MA's), (55, 50914),

Gene: Kimchi_86 Start: 51546, Stop: 51734, Start Num: 38

Candidate Starts for Kimchi_86:

(1, 51072), (6, 51237), (Start: 38 @51546 has 122 MA's), (44, 51624), (46, 51630), (50, 51666),

Gene: KingMidas_87 Start: 50707, Stop: 50886, Start Num: 37

Candidate Starts for KingMidas_87:

(21, 50584), (31, 50677), (Start: 34 @50686 has 4 MA's), (Start: 37 @50707 has 194 MA's), (45, 50782), (55, 50833),

Gene: Kingsley_93 Start: 53644, Stop: 53823, Start Num: 37

Candidate Starts for Kingsley_93:

(23, 53572), (Start: 35 @53629 has 7 MA's), (Start: 37 @53644 has 194 MA's), (49, 53755), (55, 53770),

Gene: Koella_79 Start: 47172, Stop: 47351, Start Num: 37

Candidate Starts for Koella_79:

(Start: 37 @47172 has 194 MA's), (45, 47247), (49, 47283), (55, 47298),

Gene: Kostya_82 Start: 51407, Stop: 51595, Start Num: 38

Candidate Starts for Kostya_82:

(1, 50933), (6, 51098), (Start: 38 @51407 has 122 MA's), (41, 51437), (42, 51461), (46, 51491), (55, 51542),

Gene: Krakatau_81 Start: 46587, Stop: 46766, Start Num: 37

Candidate Starts for Krakatau_81:

(Start: 37 @46587 has 194 MA's), (55, 46713),

Gene: KristaRAM_88 Start: 50345, Stop: 50554, Start Num: 37

Candidate Starts for KristaRAM_88:

(28, 50297), (Start: 37 @50345 has 194 MA's), (44, 50429), (47, 50441), (54, 50492),

Gene: LastJedi_77 Start: 48160, Stop: 48339, Start Num: 37

Candidate Starts for LastJedi_77:

(14, 47986), (16, 47995), (18, 48019), (21, 48037), (31, 48130), (Start: 34 @48139 has 4 MA's), (Start: 37 @48160 has 194 MA's), (45, 48235), (55, 48286),

Gene: Latretium_89 Start: 50528, Stop: 50707, Start Num: 37

Candidate Starts for Latretium_89:

(Start: 37 @50528 has 194 MA's), (45, 50603), (49, 50639), (55, 50654),

Gene: Leozinho_86 Start: 48229, Stop: 48408, Start Num: 37

Candidate Starts for Leozinho_86:

(Start: 37 @48229 has 194 MA's), (55, 48355),

Gene: Leperchaun_89 Start: 51841, Stop: 52050, Start Num: 37

Candidate Starts for Leperchaun_89:

(28, 51793), (Start: 37 @51841 has 194 MA's), (44, 51925), (47, 51937), (54, 51988),

Gene: LilMoolah_88 Start: 51366, Stop: 51545, Start Num: 37

Candidate Starts for LilMoolah_88:

(Start: 37 @51366 has 194 MA's), (45, 51441), (55, 51492),

Gene: Lilac_84 Start: 51158, Stop: 51346, Start Num: 38

Candidate Starts for Lilac_84:

(1, 50684), (6, 50849), (Start: 38 @51158 has 122 MA's), (41, 51188), (42, 51212), (46, 51242),

Gene: Lilizi_83 Start: 50871, Stop: 51059, Start Num: 38

Candidate Starts for Lilizi_83:

(1, 50397), (6, 50562), (Start: 38 @50871 has 122 MA's), (41, 50901), (42, 50925), (46, 50955), (55, 51006),

Gene: Lilpickle_81 Start: 50759, Stop: 50947, Start Num: 38

Candidate Starts for Lilpickle_81:

(1, 50285), (6, 50450), (Start: 38 @50759 has 122 MA's), (41, 50789), (42, 50813), (46, 50843), (55, 50894),

Gene: LittleShirley_93 Start: 51342, Stop: 51521, Start Num: 37

Candidate Starts for LittleShirley_93:

(Start: 37 @51342 has 194 MA's), (55, 51468),

Gene: Lizziana_88 Start: 51409, Stop: 51588, Start Num: 37

Candidate Starts for Lizziana_88:

(14, 51235), (16, 51244), (18, 51268), (21, 51286), (31, 51379), (Start: 34 @51388 has 4 MA's), (Start: 37 @51409 has 194 MA's), (45, 51484), (55, 51535),

Gene: Llama_95 Start: 51865, Stop: 52077, Start Num: 37

Candidate Starts for Llama_95:

(20, 51736), (24, 51805), (Start: 37 @51865 has 194 MA's), (40, 51889), (52, 51997), (53, 52009),

Gene: Llij_85 Start: 49760, Stop: 49939, Start Num: 37

Candidate Starts for Llij_85:

(27, 49718), (Start: 37 @49760 has 194 MA's), (45, 49835), (55, 49886),

Gene: Lorde_88 Start: 47482, Stop: 47661, Start Num: 37

Candidate Starts for Lorde_88:

(23, 47410), (Start: 35 @47467 has 7 MA's), (Start: 37 @47482 has 194 MA's), (49, 47593), (55, 47608),

Gene: LunaBlu_91 Start: 51670, Stop: 51849, Start Num: 37

Candidate Starts for LunaBlu_91:

(Start: 37 @51670 has 194 MA's), (45, 51745), (49, 51781), (55, 51796),

Gene: LunaStella_83 Start: 49219, Stop: 49398, Start Num: 37

Candidate Starts for LunaStella_83:

(9, 48940), (14, 49045), (16, 49054), (18, 49078), (31, 49189), (Start: 34 @49198 has 4 MA's), (Start: 37 @49219 has 194 MA's), (40, 49243), (45, 49294), (55, 49345),

Gene: MISSy_83 Start: 51265, Stop: 51453, Start Num: 38

Candidate Starts for MISSy_83:

(1, 50791), (6, 50956), (Start: 38 @51265 has 122 MA's), (41, 51295), (42, 51319), (46, 51349), (55, 51400),

Gene: MPhalcon_83 Start: 51258, Stop: 51446, Start Num: 38

Candidate Starts for MPhalcon_83:

(1, 50784), (6, 50949), (Start: 38 @51258 has 122 MA's), (41, 51288), (42, 51312), (46, 51342), (55, 51393),

Gene: MadMen_93 Start: 51324, Stop: 51503, Start Num: 37

Candidate Starts for MadMen_93:

(26, 51276), (Start: 37 @51324 has 194 MA's), (55, 51450),

Gene: MadamMonkfish_82 Start: 50486, Stop: 50674, Start Num: 38

Candidate Starts for MadamMonkfish_82:

(1, 50012), (6, 50177), (Start: 38 @50486 has 122 MA's), (41, 50516), (42, 50540), (46, 50570), (55, 50621),

Gene: Madiba_88 Start: 50610, Stop: 50789, Start Num: 37

Candidate Starts for Madiba_88:

(14, 50436), (16, 50445), (18, 50469), (21, 50487), (31, 50580), (Start: 34 @50589 has 4 MA's), (Start: 37 @50610 has 194 MA's), (45, 50685), (55, 50736),

Gene: Manda_83 Start: 52345, Stop: 52548, Start Num: 38

Candidate Starts for Manda_83:

(1, 51871), (6, 52036), (Start: 38 @52345 has 122 MA's), (41, 52375), (42, 52399), (46, 52429), (55, 52480),

Gene: Mandlovu_85 Start: 48564, Stop: 48743, Start Num: 37

Candidate Starts for Mandlovu_85:

(36, 48552), (Start: 37 @48564 has 194 MA's), (40, 48588), (45, 48639), (48, 48657), (49, 48675), (55, 48690),

Gene: Mantra_86 Start: 50751, Stop: 50930, Start Num: 37

Candidate Starts for Mantra_86:

(Start: 37 @50751 has 194 MA's), (55, 50877),

Gene: Maravista_84 Start: 52017, Stop: 52196, Start Num: 37
Candidate Starts for Maravista_84:
(14, 51843), (16, 51852), (18, 51876), (21, 51894), (31, 51987), (Start: 34 @51996 has 4 MA's), (Start: 37 @52017 has 194 MA's), (45, 52092), (55, 52143),

Gene: Marcoliusprime_70 Start: 46337, Stop: 46504, Start Num: 39
Candidate Starts for Marcoliusprime_70:
(25, 46277), (Start: 39 @46337 has 10 MA's), (41, 46361), (43, 46397),

Gene: Marshmallow_80 Start: 52035, Stop: 52223, Start Num: 38
Candidate Starts for Marshmallow_80:
(1, 51561), (6, 51726), (Start: 38 @52035 has 122 MA's), (41, 52065), (42, 52089), (46, 52119), (55, 52170),

Gene: Martik_84 Start: 51689, Stop: 51868, Start Num: 37
Candidate Starts for Martik_84:
(Start: 37 @51689 has 194 MA's), (45, 51764), (49, 51800), (55, 51815),

Gene: Mattes_86 Start: 51189, Stop: 51389, Start Num: 34
Candidate Starts for Mattes_86:
(21, 51087), (31, 51180), (Start: 34 @51189 has 4 MA's), (Start: 37 @51210 has 194 MA's), (55, 51336),

Gene: Maxxinista_84 Start: 51131, Stop: 51319, Start Num: 38
Candidate Starts for Maxxinista_84:
(1, 50657), (6, 50822), (Start: 38 @51131 has 122 MA's), (41, 51161), (42, 51185), (46, 51215), (55, 51266),

Gene: Melissauren88_77 Start: 46817, Stop: 47026, Start Num: 37
Candidate Starts for Melissauren88_77:
(28, 46769), (Start: 37 @46817 has 194 MA's), (44, 46901), (47, 46913), (54, 46964),

Gene: MilanaBonita_82 Start: 49346, Stop: 49525, Start Num: 37
Candidate Starts for MilanaBonita_82:
(14, 49172), (16, 49181), (18, 49205), (21, 49223), (31, 49316), (Start: 34 @49325 has 4 MA's), (Start: 37 @49346 has 194 MA's), (45, 49421), (55, 49472),

Gene: MilleniumForce_88 Start: 51311, Stop: 51490, Start Num: 37
Candidate Starts for MilleniumForce_88:
(14, 51137), (16, 51146), (18, 51170), (21, 51188), (31, 51281), (Start: 34 @51290 has 4 MA's), (Start: 37 @51311 has 194 MA's), (45, 51386), (55, 51437),

Gene: Milly_70 Start: 46311, Stop: 46478, Start Num: 39
Candidate Starts for Milly_70:
(25, 46251), (Start: 39 @46311 has 10 MA's), (41, 46335), (43, 46371),

Gene: Mindy_81 Start: 50347, Stop: 50535, Start Num: 38
Candidate Starts for Mindy_81:
(1, 49873), (6, 50038), (Start: 38 @50347 has 122 MA's), (41, 50377), (42, 50401), (46, 50431), (55, 50482),

Gene: MinionDave_86 Start: 50975, Stop: 51154, Start Num: 37

Candidate Starts for MinionDave_86:
(Start: 37 @50975 has 194 MA's), (45, 51050), (55, 51101),

Gene: Miniwave_77 Start: 50803, Stop: 50991, Start Num: 38
Candidate Starts for Miniwave_77:
(1, 50329), (6, 50494), (Start: 38 @50803 has 122 MA's), (41, 50833), (42, 50857), (44, 50881), (46, 50887), (55, 50938),

Gene: Misfit_83 Start: 52277, Stop: 52465, Start Num: 38
Candidate Starts for Misfit_83:
(1, 51803), (6, 51968), (Start: 38 @52277 has 122 MA's), (41, 52307), (42, 52331), (46, 52361), (55, 52412),

Gene: MisterCuddles_87 Start: 51179, Stop: 51358, Start Num: 37
Candidate Starts for MisterCuddles_87:
(Start: 37 @51179 has 194 MA's), (55, 51305),

Gene: Modragons_93 Start: 51853, Stop: 52065, Start Num: 37
Candidate Starts for Modragons_93:
(20, 51724), (24, 51793), (Start: 37 @51853 has 194 MA's), (40, 51877), (52, 51985), (53, 51997),

Gene: Moldemort_85 Start: 51359, Stop: 51547, Start Num: 38
Candidate Starts for Moldemort_85:
(1, 50885), (6, 51050), (Start: 38 @51359 has 122 MA's), (41, 51389), (42, 51413), (46, 51443), (55, 51494),

Gene: MooMoo_83 Start: 48800, Stop: 48997, Start Num: 37
Candidate Starts for MooMoo_83:
(21, 48677), (31, 48770), (33, 48779), (Start: 37 @48800 has 194 MA's),

Gene: Moonbeam_90 Start: 51626, Stop: 51838, Start Num: 37
Candidate Starts for Moonbeam_90:
(Start: 37 @51626 has 194 MA's), (40, 51650), (52, 51758), (53, 51770),

Gene: Mosby_78 Start: 50560, Stop: 50748, Start Num: 38
Candidate Starts for Mosby_78:
(1, 50086), (6, 50251), (Start: 38 @50560 has 122 MA's), (41, 50590), (42, 50614), (46, 50644), (55, 50695),

Gene: Mova_91 Start: 51149, Stop: 51328, Start Num: 37
Candidate Starts for Mova_91:
(23, 51077), (Start: 35 @51134 has 7 MA's), (Start: 37 @51149 has 194 MA's), (45, 51224), (55, 51275),

Gene: Mozy_95 Start: 50915, Stop: 51094, Start Num: 37
Candidate Starts for Mozy_95:
(29, 50879), (30, 50885), (32, 50888), (Start: 35 @50903 has 7 MA's), (Start: 37 @50915 has 194 MA's), (45, 50990), (55, 51041),

Gene: Ms6_89 Start: 47480, Stop: 47659, Start Num: 37
Candidate Starts for Ms6_89:
(14, 47306), (16, 47315), (18, 47339), (21, 47357), (31, 47450), (Start: 34 @47459 has 4 MA's), (Start: 37 @47480 has 194 MA's), (45, 47555), (55, 47606),

Gene: Mufasa_70 Start: 45897, Stop: 46064, Start Num: 39

Candidate Starts for Mufasa_70:

(12, 45681), (13, 45690), (25, 45837), (Start: 39 @45897 has 10 MA's), (41, 45921),

Gene: Murica_85 Start: 52206, Stop: 52394, Start Num: 38

Candidate Starts for Murica_85:

(1, 51732), (6, 51897), (Start: 38 @52206 has 122 MA's), (41, 52236), (42, 52260), (46, 52290), (55, 52341),

Gene: Murphy_82 Start: 51643, Stop: 51831, Start Num: 38

Candidate Starts for Murphy_82:

(1, 51169), (6, 51334), (Start: 38 @51643 has 122 MA's), (41, 51673), (42, 51697), (46, 51727), (55, 51778),

Gene: Mutaforma13_90 Start: 50446, Stop: 50628, Start Num: 37

Candidate Starts for Mutaforma13_90:

(Start: 37 @50446 has 194 MA's), (45, 50524), (55, 50575),

Gene: Myrale_82 Start: 51903, Stop: 52091, Start Num: 38

Candidate Starts for Myrale_82:

(1, 51429), (6, 51594), (Start: 38 @51903 has 122 MA's), (44, 51981), (46, 51987), (50, 52023),

Gene: Nala_84 Start: 51767, Stop: 51955, Start Num: 38

Candidate Starts for Nala_84:

(1, 51293), (6, 51458), (Start: 38 @51767 has 122 MA's), (41, 51797), (42, 51821), (46, 51851), (55, 51902),

Gene: NelitzaMV_80 Start: 50849, Stop: 51037, Start Num: 38

Candidate Starts for NelitzaMV_80:

(1, 50375), (6, 50540), (Start: 38 @50849 has 122 MA's), (41, 50879), (42, 50903), (46, 50933), (55, 50984),

Gene: Nimbo_80 Start: 49784, Stop: 49963, Start Num: 37

Candidate Starts for Nimbo_80:

(Start: 37 @49784 has 194 MA's), (55, 49910),

Gene: Nimrod_83 Start: 52470, Stop: 52658, Start Num: 38

Candidate Starts for Nimrod_83:

(1, 51996), (6, 52161), (Start: 38 @52470 has 122 MA's), (41, 52500), (42, 52524), (46, 52554), (55, 52605),

Gene: Nitzel_82 Start: 47847, Stop: 48059, Start Num: 37

Candidate Starts for Nitzel_82:

(Start: 37 @47847 has 194 MA's), (40, 47871), (52, 47979), (53, 47991),

Gene: Nivrat_86 Start: 51239, Stop: 51418, Start Num: 37

Candidate Starts for Nivrat_86:

(Start: 37 @51239 has 194 MA's), (45, 51314), (55, 51365),

Gene: NoSleep_83 Start: 51104, Stop: 51292, Start Num: 38

Candidate Starts for NoSleep_83:

(1, 50630), (6, 50795), (Start: 38 @51104 has 122 MA's), (41, 51134), (42, 51158), (46, 51188), (55, 51239),

Gene: NormanBulbieJr_85 Start: 51186, Stop: 51365, Start Num: 37

Candidate Starts for NormanBulbieJr_85:

(Start: 37 @51186 has 194 MA's), (45, 51261), (49, 51297), (55, 51312),

Gene: Ochi17_94 Start: 51460, Stop: 51672, Start Num: 37

Candidate Starts for Ochi17_94:

(20, 51331), (24, 51400), (Start: 37 @51460 has 194 MA's), (40, 51484), (52, 51592), (53, 51604),

Gene: OfUltron_96 Start: 52009, Stop: 52221, Start Num: 37

Candidate Starts for OfUltron_96:

(20, 51880), (24, 51949), (Start: 37 @52009 has 194 MA's), (40, 52033), (52, 52141), (53, 52153),

Gene: Ogopogo_93 Start: 50508, Stop: 50687, Start Num: 37

Candidate Starts for Ogopogo_93:

(Start: 37 @50508 has 194 MA's), (45, 50583), (55, 50634),

Gene: Oksu_91 Start: 52614, Stop: 52802, Start Num: 40

Candidate Starts for Oksu_91:

(20, 52461), (24, 52530), (Start: 37 @52590 has 194 MA's), (40, 52614), (52, 52722), (53, 52734),

Gene: OldBen_85 Start: 51176, Stop: 51355, Start Num: 37

Candidate Starts for OldBen_85:

(Start: 37 @51176 has 194 MA's), (55, 51302),

Gene: OlympiaSaint_89 Start: 51420, Stop: 51599, Start Num: 37

Candidate Starts for OlympiaSaint_89:

(21, 51297), (31, 51390), (Start: 34 @51399 has 4 MA's), (Start: 37 @51420 has 194 MA's), (55, 51546),

Gene: OrionPax_81 Start: 50855, Stop: 51043, Start Num: 38

Candidate Starts for OrionPax_81:

(1, 50381), (6, 50546), (Start: 38 @50855 has 122 MA's), (41, 50885), (42, 50909), (46, 50939), (55, 50990),

Gene: Ovechkin_93 Start: 52013, Stop: 52192, Start Num: 37

Candidate Starts for Ovechkin_93:

(36, 52001), (Start: 37 @52013 has 194 MA's), (40, 52037), (45, 52088), (48, 52106), (49, 52124), (55, 52139),

Gene: OwlsT2W_87 Start: 49851, Stop: 50030, Start Num: 37

Candidate Starts for OwlsT2W_87:

(Start: 37 @49851 has 194 MA's), (45, 49926), (55, 49977),

Gene: PHappiness_88 Start: 52005, Stop: 52184, Start Num: 37

Candidate Starts for PHappiness_88:

(Start: 37 @52005 has 194 MA's), (55, 52131),

Gene: PMC_85 Start: 49652, Stop: 49831, Start Num: 37

Candidate Starts for PMC_85:

(23, 49580), (Start: 35 @49637 has 7 MA's), (Start: 37 @49652 has 194 MA's), (49, 49763), (55, 49778),

Gene: Pacc40_84 Start: 51605, Stop: 51784, Start Num: 37
Candidate Starts for Pacc40_84:
(Start: 37 @51605 has 194 MA's), (45, 51680), (55, 51731),

Gene: Palpatine_84 Start: 52233, Stop: 52421, Start Num: 38
Candidate Starts for Palpatine_84:
(1, 51759), (6, 51924), (Start: 38 @52233 has 122 MA's), (41, 52263), (42, 52287), (46, 52317), (55, 52368),

Gene: Paperbeatsrock_81 Start: 51481, Stop: 51669, Start Num: 38
Candidate Starts for Paperbeatsrock_81:
(1, 51007), (6, 51172), (Start: 38 @51481 has 122 MA's), (41, 51511), (42, 51535), (44, 51559), (46, 51565), (55, 51616),

Gene: Pat3_80 Start: 50013, Stop: 50201, Start Num: 38
Candidate Starts for Pat3_80:
(6, 49704), (Start: 38 @50013 has 122 MA's), (44, 50091), (46, 50097), (50, 50133),

Gene: Petra64142_86 Start: 52700, Stop: 52888, Start Num: 38
Candidate Starts for Petra64142_86:
(1, 52226), (6, 52391), (Start: 38 @52700 has 122 MA's), (41, 52730), (42, 52754), (44, 52778), (46, 52784), (55, 52835),

Gene: Phaja_80 Start: 51307, Stop: 51495, Start Num: 38
Candidate Starts for Phaja_80:
(1, 50833), (6, 50998), (Start: 38 @51307 has 122 MA's), (41, 51337), (42, 51361), (44, 51385), (46, 51391), (55, 51442),

Gene: Phalconet_86 Start: 49981, Stop: 50160, Start Num: 37
Candidate Starts for Phalconet_86:
(23, 49909), (Start: 35 @49966 has 7 MA's), (Start: 37 @49981 has 194 MA's), (45, 50056), (55, 50107),

Gene: Phanphagia_90 Start: 51883, Stop: 52062, Start Num: 37
Candidate Starts for Phanphagia_90:
(23, 51811), (Start: 35 @51868 has 7 MA's), (Start: 37 @51883 has 194 MA's), (49, 51994), (55, 52009),

Gene: Pharsalus_79 Start: 51281, Stop: 51469, Start Num: 38
Candidate Starts for Pharsalus_79:
(1, 50807), (6, 50972), (Start: 38 @51281 has 122 MA's), (41, 51311), (42, 51335), (44, 51359), (46, 51365), (55, 51416),

Gene: Phasih_84 Start: 49369, Stop: 49548, Start Num: 37
Candidate Starts for Phasih_84:
(Start: 37 @49369 has 194 MA's), (45, 49444), (55, 49495),

Gene: PhatBacter_86 Start: 52253, Stop: 52441, Start Num: 38
Candidate Starts for PhatBacter_86:

(1, 51779), (6, 51944), (Start: 38 @52253 has 122 MA's), (41, 52283), (42, 52307), (46, 52337), (55, 52388),

Gene: Phatniss_85 Start: 50038, Stop: 50217, Start Num: 37
Candidate Starts for Phatniss_85:
(Start: 37 @50038 has 194 MA's), (49, 50149), (55, 50164),

Gene: Phaux_84 Start: 52248, Stop: 52436, Start Num: 38
Candidate Starts for Phaux_84:
(1, 51774), (6, 51939), (Start: 38 @52248 has 122 MA's), (41, 52278), (42, 52302), (46, 52332), (55, 52383),

Gene: PhesterPhotato_91 Start: 50856, Stop: 51035, Start Num: 37
Candidate Starts for PhesterPhotato_91:
(14, 50682), (16, 50691), (18, 50715), (21, 50733), (31, 50826), (Start: 34 @50835 has 4 MA's), (Start: 37 @50856 has 194 MA's), (45, 50931), (55, 50982),

Gene: Philus_89 Start: 52370, Stop: 52549, Start Num: 37
Candidate Starts for Philus_89:
(31, 52340), (Start: 34 @52349 has 4 MA's), (Start: 37 @52370 has 194 MA's), (55, 52496),

Gene: Phrux_79 Start: 50841, Stop: 51029, Start Num: 38
Candidate Starts for Phrux_79:
(1, 50367), (6, 50532), (Start: 38 @50841 has 122 MA's), (41, 50871), (42, 50895), (46, 50925), (55, 50976),

Gene: Pippy_82 Start: 49069, Stop: 49248, Start Num: 37
Candidate Starts for Pippy_82:
(14, 48895), (16, 48904), (18, 48928), (21, 48946), (31, 49039), (Start: 34 @49048 has 4 MA's), (Start: 37 @49069 has 194 MA's), (45, 49144), (55, 49195),

Gene: Plumbus_88 Start: 48222, Stop: 48401, Start Num: 37
Candidate Starts for Plumbus_88:
(14, 48048), (16, 48057), (17, 48069), (18, 48081), (21, 48099), (31, 48192), (Start: 34 @48201 has 4 MA's), (Start: 37 @48222 has 194 MA's), (55, 48348),

Gene: Poenanya_91 Start: 51481, Stop: 51660, Start Num: 37
Candidate Starts for Poenanya_91:
(21, 51358), (31, 51451), (Start: 34 @51460 has 4 MA's), (Start: 37 @51481 has 194 MA's), (45, 51556), (55, 51607),

Gene: Policronamos_86 Start: 52248, Stop: 52436, Start Num: 38
Candidate Starts for Policronamos_86:
(1, 51774), (6, 51939), (Start: 38 @52248 has 122 MA's), (41, 52278), (42, 52302), (46, 52332), (55, 52383),

Gene: Polka14_92 Start: 52271, Stop: 52450, Start Num: 37
Candidate Starts for Polka14_92:
(21, 52148), (31, 52241), (Start: 34 @52250 has 4 MA's), (Start: 37 @52271 has 194 MA's), (45, 52346), (55, 52397),

Gene: Pollywog_89 Start: 52081, Stop: 52293, Start Num: 37
Candidate Starts for Pollywog_89:

(Start: 37 @52081 has 194 MA's), (40, 52105), (52, 52213), (53, 52225),

Gene: PopTart_80 Start: 47838, Stop: 48050, Start Num: 37

Candidate Starts for PopTart_80:

(4, 47490), (8, 47541), (11, 47574), (14, 47661), (16, 47670), (18, 47694), (21, 47712), (31, 47805), (33, 47814), (Start: 37 @47838 has 194 MA's), (52, 47970), (53, 47982),

Gene: Porky_81 Start: 50671, Stop: 50859, Start Num: 38

Candidate Starts for Porky_81:

(1, 50197), (6, 50362), (Start: 38 @50671 has 122 MA's), (41, 50701), (42, 50725), (46, 50755), (55, 50806),

Gene: Priscilla_87 Start: 51284, Stop: 51463, Start Num: 37

Candidate Starts for Priscilla_87:

(Start: 37 @51284 has 194 MA's), (45, 51359), (49, 51395), (55, 51410),

Gene: Pumpkin_85 Start: 51899, Stop: 52087, Start Num: 38

Candidate Starts for Pumpkin_85:

(1, 51425), (6, 51590), (Start: 38 @51899 has 122 MA's), (41, 51929), (42, 51953), (46, 51983), (55, 52034),

Gene: Quallification_83 Start: 51889, Stop: 52077, Start Num: 38

Candidate Starts for Quallification_83:

(1, 51415), (6, 51580), (Start: 38 @51889 has 122 MA's), (41, 51919), (42, 51943), (46, 51973), (55, 52024),

Gene: QuickMath_89 Start: 51040, Stop: 51219, Start Num: 37

Candidate Starts for QuickMath_89:

(Start: 37 @51040 has 194 MA's), (55, 51166),

Gene: Quico_95 Start: 52283, Stop: 52477, Start Num: 35

Candidate Starts for Quico_95:

(23, 52226), (Start: 35 @52283 has 7 MA's), (Start: 37 @52298 has 194 MA's), (45, 52373), (55, 52424),

Gene: Radiance_84 Start: 50365, Stop: 50574, Start Num: 37

Candidate Starts for Radiance_84:

(28, 50317), (Start: 37 @50365 has 194 MA's), (44, 50449), (47, 50461), (54, 50512),

Gene: Rakim_83 Start: 51355, Stop: 51543, Start Num: 38

Candidate Starts for Rakim_83:

(1, 50881), (6, 51046), (Start: 38 @51355 has 122 MA's), (44, 51433), (46, 51439), (50, 51475),

Gene: Ramsey_92 Start: 52536, Stop: 52715, Start Num: 37

Candidate Starts for Ramsey_92:

(Start: 37 @52536 has 194 MA's), (45, 52611), (55, 52662),

Gene: Renaud18_96 Start: 51315, Stop: 51494, Start Num: 37

Candidate Starts for Renaud18_96:

(3, 50973), (5, 51006), (9, 51039), (14, 51141), (16, 51150), (19, 51183), (21, 51192), (31, 51285), (Start: 34 @51294 has 4 MA's), (Start: 37 @51315 has 194 MA's), (45, 51390), (55, 51441),

Gene: Rialto_93 Start: 51722, Stop: 51934, Start Num: 37

Candidate Starts for Rialto_93:
(Start: 37 @51722 has 194 MA's), (40, 51746), (52, 51854), (53, 51866),

Gene: Rimmer_83 Start: 51594, Stop: 51782, Start Num: 38
Candidate Starts for Rimmer_83:
(1, 51120), (6, 51285), (Start: 38 @51594 has 122 MA's), (44, 51672), (46, 51678), (50, 51714),

Gene: RitaG_88 Start: 51807, Stop: 51986, Start Num: 37
Candidate Starts for RitaG_88:
(Start: 37 @51807 has 194 MA's), (55, 51933),

Gene: RiverMonster_82 Start: 51419, Stop: 51607, Start Num: 38
Candidate Starts for RiverMonster_82:
(1, 50945), (6, 51110), (Start: 38 @51419 has 122 MA's), (41, 51449), (42, 51473), (46, 51503), (55, 51554),

Gene: Rockne_89 Start: 49664, Stop: 49843, Start Num: 37
Candidate Starts for Rockne_89:
(23, 49592), (Start: 35 @49649 has 7 MA's), (Start: 37 @49664 has 194 MA's), (49, 49775), (55, 49790),

Gene: Royals2015_93 Start: 50353, Stop: 50532, Start Num: 37
Candidate Starts for Royals2015_93:
(14, 50179), (16, 50188), (18, 50212), (21, 50230), (31, 50323), (Start: 34 @50332 has 4 MA's), (Start: 37 @50353 has 194 MA's), (45, 50428), (55, 50479),

Gene: Ruby_84 Start: 51180, Stop: 51359, Start Num: 37
Candidate Starts for Ruby_84:
(Start: 37 @51180 has 194 MA's), (55, 51306),

Gene: SG4_90 Start: 51986, Stop: 52195, Start Num: 37
Candidate Starts for SG4_90:
(28, 51938), (Start: 37 @51986 has 194 MA's), (44, 52070), (47, 52082), (54, 52133),

Gene: STLscum_67 Start: 42317, Stop: 42105, Start Num: 37
Candidate Starts for STLscum_67:
(22, 42389), (Start: 37 @42317 has 194 MA's), (40, 42293), (52, 42185), (53, 42173), (54, 42167),

Gene: Saal_83 Start: 50780, Stop: 50959, Start Num: 37
Candidate Starts for Saal_83:
(14, 50606), (16, 50615), (18, 50639), (21, 50657), (31, 50750), (Start: 34 @50759 has 4 MA's), (Start: 37 @50780 has 194 MA's), (45, 50855), (55, 50906),

Gene: Sabbb_92 Start: 49485, Stop: 49664, Start Num: 37
Candidate Starts for Sabbb_92:
(Start: 37 @49485 has 194 MA's), (45, 49560), (49, 49596), (55, 49611),

Gene: Saints25_81 Start: 50832, Stop: 51020, Start Num: 38
Candidate Starts for Saints25_81:
(1, 50358), (6, 50523), (Start: 38 @50832 has 122 MA's), (41, 50862), (42, 50886), (46, 50916), (55, 50967),

Gene: Sandalphon_87 Start: 51671, Stop: 51844, Start Num: 37

Candidate Starts for Sandalphon_87:
(Start: 37 @51671 has 194 MA's), (45, 51746), (49, 51782), (55, 51797),

Gene: Sarma624_88 Start: 47656, Stop: 47835, Start Num: 37
Candidate Starts for Sarma624_88:
(23, 47584), (Start: 35 @47641 has 7 MA's), (Start: 37 @47656 has 194 MA's), (49, 47767), (55, 47782),

Gene: Sassay_77 Start: 49522, Stop: 49710, Start Num: 38
Candidate Starts for Sassay_77:
(1, 49048), (6, 49213), (Start: 38 @49522 has 122 MA's), (41, 49552), (42, 49576), (46, 49606), (55, 49657),

Gene: SassyB_80 Start: 47838, Stop: 48050, Start Num: 37
Candidate Starts for SassyB_80:
(4, 47490), (8, 47541), (11, 47574), (14, 47661), (16, 47670), (18, 47694), (21, 47712), (31, 47805), (33, 47814), (Start: 37 @47838 has 194 MA's), (52, 47970), (53, 47982),

Gene: Scottish_87 Start: 50146, Stop: 50325, Start Num: 37
Candidate Starts for Scottish_87:
(31, 50116), (Start: 34 @50125 has 4 MA's), (Start: 37 @50146 has 194 MA's), (45, 50221), (55, 50272),

Gene: Seabastian_96 Start: 52010, Stop: 52222, Start Num: 37
Candidate Starts for Seabastian_96:
(20, 51881), (24, 51950), (Start: 37 @52010 has 194 MA's), (40, 52034), (52, 52142), (53, 52154),

Gene: Seagreen_88 Start: 51351, Stop: 51530, Start Num: 37
Candidate Starts for Seagreen_88:
(36, 51339), (Start: 37 @51351 has 194 MA's), (40, 51375), (45, 51426), (48, 51444), (49, 51462), (55, 51477),

Gene: ShamWow_82 Start: 51741, Stop: 51929, Start Num: 38
Candidate Starts for ShamWow_82:
(1, 51267), (6, 51432), (Start: 38 @51741 has 122 MA's), (41, 51771), (42, 51795), (46, 51825), (55, 51876),

Gene: Shauna1_87 Start: 51499, Stop: 51678, Start Num: 37
Candidate Starts for Shauna1_87:
(23, 51427), (Start: 35 @51484 has 7 MA's), (Start: 37 @51499 has 194 MA's), (49, 51610), (55, 51625),

Gene: ShereKhan_80 Start: 51814, Stop: 52002, Start Num: 38
Candidate Starts for ShereKhan_80:
(1, 51340), (6, 51505), (Start: 38 @51814 has 122 MA's), (41, 51844), (42, 51868), (46, 51898), (55, 51949),

Gene: ShiLan_89 Start: 52933, Stop: 53112, Start Num: 37
Candidate Starts for ShiLan_89:
(21, 52810), (31, 52903), (Start: 34 @52912 has 4 MA's), (Start: 37 @52933 has 194 MA's), (55, 53059),

Gene: ShowerHandel_85 Start: 49616, Stop: 49795, Start Num: 37

Candidate Starts for ShowerHandel_85:
(Start: 37 @49616 has 194 MA's), (45, 49691), (49, 49727), (55, 49742),

Gene: ShroomBoi_86 Start: 50441, Stop: 50620, Start Num: 37
Candidate Starts for ShroomBoi_86:
(Start: 37 @50441 has 194 MA's), (55, 50567),

Gene: SiSi_85 Start: 50276, Stop: 50455, Start Num: 37
Candidate Starts for SiSi_85:
(Start: 37 @50276 has 194 MA's), (55, 50402),

Gene: Simpliphy_81 Start: 50822, Stop: 51010, Start Num: 38
Candidate Starts for Simpliphy_81:
(1, 50348), (6, 50513), (Start: 38 @50822 has 122 MA's), (41, 50852), (42, 50876), (46, 50906), (55, 50957),

Gene: SimranZ1_86 Start: 49680, Stop: 49859, Start Num: 37
Candidate Starts for SimranZ1_86:
(31, 49650), (Start: 34 @49659 has 4 MA's), (Start: 37 @49680 has 194 MA's), (40, 49704), (45, 49755), (49, 49791), (55, 49806),

Gene: SirDuracell_81 Start: 50108, Stop: 50296, Start Num: 38
Candidate Starts for SirDuracell_81:
(1, 49634), (6, 49799), (Start: 38 @50108 has 122 MA's), (44, 50186), (46, 50192), (50, 50228),

Gene: SophKB_79 Start: 50500, Stop: 50688, Start Num: 38
Candidate Starts for SophKB_79:
(1, 50026), (6, 50191), (Start: 38 @50500 has 122 MA's), (41, 50530), (42, 50554), (46, 50584), (55, 50635),

Gene: Sotrice96_83 Start: 51503, Stop: 51691, Start Num: 38
Candidate Starts for Sotrice96_83:
(1, 51029), (6, 51194), (Start: 38 @51503 has 122 MA's), (44, 51581), (46, 51587), (50, 51623),

Gene: Soul22_88 Start: 48698, Stop: 48877, Start Num: 37
Candidate Starts for Soul22_88:
(14, 48524), (16, 48533), (18, 48557), (21, 48575), (31, 48668), (Start: 34 @48677 has 4 MA's), (Start: 37 @48698 has 194 MA's), (45, 48773), (55, 48824),

Gene: Sparkdehlily_96 Start: 49993, Stop: 50205, Start Num: 37
Candidate Starts for Sparkdehlily_96:
(Start: 37 @49993 has 194 MA's), (40, 50017), (52, 50125), (53, 50137),

Gene: Spartacus_94 Start: 53310, Stop: 53501, Start Num: 35
Candidate Starts for Spartacus_94:
(Start: 35 @53310 has 7 MA's), (40, 53346), (45, 53397), (55, 53448),

Gene: Spoonbill_85 Start: 48846, Stop: 49025, Start Num: 37
Candidate Starts for Spoonbill_85:
(21, 48723), (31, 48816), (Start: 34 @48825 has 4 MA's), (Start: 37 @48846 has 194 MA's), (55, 48972),

Gene: Squirty_88 Start: 54631, Stop: 54840, Start Num: 37

Candidate Starts for Squirty_88:

(28, 54583), (Start: 37 @54631 has 194 MA's), (44, 54715), (47, 54727), (54, 54778),

Gene: StAnnes_92 Start: 52364, Stop: 52543, Start Num: 37

Candidate Starts for StAnnes_92:

(14, 52190), (16, 52199), (18, 52223), (21, 52241), (31, 52334), (Start: 34 @52343 has 4 MA's), (Start: 37 @52364 has 194 MA's), (45, 52439), (55, 52490),

Gene: Stank_85 Start: 51761, Stop: 51949, Start Num: 38

Candidate Starts for Stank_85:

(1, 51287), (6, 51452), (Start: 38 @51761 has 122 MA's), (41, 51791), (42, 51815), (46, 51845), (55, 51896),

Gene: Stap_84 Start: 48346, Stop: 48555, Start Num: 37

Candidate Starts for Stap_84:

(28, 48298), (Start: 37 @48346 has 194 MA's), (44, 48430), (47, 48442), (54, 48493),

Gene: Starcevich_88 Start: 51870, Stop: 52049, Start Num: 37

Candidate Starts for Starcevich_88:

(7, 51576), (10, 51609), (14, 51696), (16, 51705), (17, 51717), (19, 51738), (21, 51747), (31, 51840), (Start: 34 @51849 has 4 MA's), (Start: 37 @51870 has 194 MA's), (45, 51945), (55, 51996),

Gene: Stark_83 Start: 51302, Stop: 51490, Start Num: 38

Candidate Starts for Stark_83:

(1, 50828), (6, 50993), (Start: 38 @51302 has 122 MA's), (41, 51332), (42, 51356), (46, 51386), (55, 51437),

Gene: StellaBean_80 Start: 51065, Stop: 51253, Start Num: 38

Candidate Starts for StellaBean_80:

(1, 50591), (6, 50756), (Start: 38 @51065 has 122 MA's), (41, 51095), (42, 51119), (46, 51149), (55, 51200),

Gene: StolenFromERC_85 Start: 51543, Stop: 51731, Start Num: 38

Candidate Starts for StolenFromERC_85:

(1, 51069), (6, 51234), (Start: 38 @51543 has 122 MA's), (44, 51621), (46, 51627), (50, 51663),

Gene: Strobilo_71 Start: 46313, Stop: 46480, Start Num: 39

Candidate Starts for Strobilo_71:

(25, 46253), (Start: 39 @46313 has 10 MA's), (41, 46337), (43, 46373),

Gene: Strokeseat_85 Start: 48621, Stop: 48800, Start Num: 37

Candidate Starts for Strokeseat_85:

(36, 48609), (Start: 37 @48621 has 194 MA's), (40, 48645), (45, 48696), (48, 48714), (49, 48732), (55, 48747),

Gene: SuperGrey_88 Start: 52853, Stop: 53032, Start Num: 37

Candidate Starts for SuperGrey_88:

(26, 52805), (Start: 37 @52853 has 194 MA's), (55, 52979),

Gene: SwagPiggett_88 Start: 51916, Stop: 52095, Start Num: 37

Candidate Starts for SwagPiggett_88:

(14, 51742), (16, 51751), (18, 51775), (21, 51793), (31, 51886), (Start: 34 @51895 has 4 MA's), (Start: 37 @51916 has 194 MA's), (45, 51991), (55, 52042),

Gene: TBrady12_85 Start: 51242, Stop: 51430, Start Num: 38

Candidate Starts for TBrady12_85:

(1, 50768), (6, 50933), (Start: 38 @51242 has 122 MA's), (41, 51272), (42, 51296), (46, 51326), (55, 51377),

Gene: TChen_85 Start: 51170, Stop: 51349, Start Num: 37

Candidate Starts for TChen_85:

(9, 50891), (14, 50996), (16, 51005), (18, 51029), (31, 51140), (Start: 34 @51149 has 4 MA's), (Start: 37 @51170 has 194 MA's), (40, 51194), (45, 51245), (55, 51296),

Gene: TDanisky_97 Start: 49993, Stop: 50205, Start Num: 37

Candidate Starts for TDanisky_97:

(Start: 37 @49993 has 194 MA's), (40, 50017), (52, 50125), (53, 50137),

Gene: TM4_68 Start: 40975, Stop: 41142, Start Num: 39

Candidate Starts for TM4_68:

(12, 40759), (13, 40768), (25, 40915), (Start: 39 @40975 has 10 MA's), (41, 40999),

Gene: Taj_96 Start: 52898, Stop: 53077, Start Num: 37

Candidate Starts for Taj_96:

(23, 52826), (Start: 35 @52883 has 7 MA's), (Start: 37 @52898 has 194 MA's), (49, 53009), (55, 53024),

Gene: Tarkin_81 Start: 51490, Stop: 51678, Start Num: 38

Candidate Starts for Tarkin_81:

(1, 51016), (6, 51181), (Start: 38 @51490 has 122 MA's), (41, 51520), (42, 51544), (44, 51568), (46, 51574), (55, 51625),

Gene: TeardropMSU_78 Start: 50490, Stop: 50678, Start Num: 38

Candidate Starts for TeardropMSU_78:

(1, 50016), (6, 50181), (Start: 38 @50490 has 122 MA's), (41, 50520), (42, 50544), (46, 50574), (55, 50625),

Gene: Teaspoon_83 Start: 51384, Stop: 51572, Start Num: 38

Candidate Starts for Teaspoon_83:

(1, 50910), (6, 51075), (Start: 38 @51384 has 122 MA's), (41, 51414), (42, 51438), (46, 51468), (55, 51519),

Gene: Terminus_85 Start: 52277, Stop: 52465, Start Num: 38

Candidate Starts for Terminus_85:

(1, 51803), (6, 51968), (Start: 38 @52277 has 122 MA's), (41, 52307), (42, 52331), (46, 52361), (55, 52412),

Gene: ThetaBob_89 Start: 49960, Stop: 50169, Start Num: 37

Candidate Starts for ThetaBob_89:

(28, 49912), (Start: 37 @49960 has 194 MA's), (44, 50044), (47, 50056), (54, 50107),

Gene: Thresher_84 Start: 52361, Stop: 52549, Start Num: 38

Candidate Starts for Thresher_84:

(1, 51887), (6, 52052), (Start: 38 @52361 has 122 MA's), (41, 52391), (42, 52415), (46, 52445), (55, 52496),

Gene: Tomaszewski_77 Start: 50653, Stop: 50841, Start Num: 38
Candidate Starts for Tomaszewski_77:
(1, 50179), (6, 50344), (Start: 38 @50653 has 122 MA's), (41, 50683), (42, 50707), (46, 50737), (55, 50788),

Gene: Tootsieroll_83 Start: 50956, Stop: 51135, Start Num: 37
Candidate Starts for Tootsieroll_83:
(21, 50833), (31, 50926), (Start: 34 @50935 has 4 MA's), (Start: 37 @50956 has 194 MA's), (45, 51031), (55, 51082),

Gene: Totinger_90 Start: 50419, Stop: 50598, Start Num: 37
Candidate Starts for Totinger_90:
(Start: 37 @50419 has 194 MA's), (55, 50545),

Gene: Toto_80 Start: 51741, Stop: 51929, Start Num: 38
Candidate Starts for Toto_80:
(1, 51267), (6, 51432), (Start: 38 @51741 has 122 MA's), (41, 51771), (42, 51795), (46, 51825), (55, 51876),

Gene: Traaww1_78 Start: 50925, Stop: 51113, Start Num: 38
Candidate Starts for Traaww1_78:
(1, 50451), (6, 50616), (Start: 38 @50925 has 122 MA's), (41, 50955), (42, 50979), (46, 51009), (55, 51060),

Gene: Tuco_83 Start: 52249, Stop: 52437, Start Num: 38
Candidate Starts for Tuco_83:
(1, 51775), (6, 51940), (Start: 38 @52249 has 122 MA's), (41, 52279), (42, 52303), (46, 52333), (55, 52384),

Gene: Tweety_89 Start: 51948, Stop: 52127, Start Num: 37
Candidate Starts for Tweety_89:
(Start: 37 @51948 has 194 MA's), (55, 52074),

Gene: Ukulele_77 Start: 50635, Stop: 50823, Start Num: 38
Candidate Starts for Ukulele_77:
(1, 50161), (6, 50326), (Start: 38 @50635 has 122 MA's), (41, 50665), (42, 50689), (46, 50719), (55, 50770),

Gene: UncleRicky_87 Start: 49523, Stop: 49717, Start Num: 35
Candidate Starts for UncleRicky_87:
(23, 49466), (Start: 35 @49523 has 7 MA's), (Start: 37 @49538 has 194 MA's), (49, 49649), (55, 49664),

Gene: VRedHorse_89 Start: 48720, Stop: 48899, Start Num: 37
Candidate Starts for VRedHorse_89:
(Start: 37 @48720 has 194 MA's), (45, 48795), (49, 48831), (55, 48846),

Gene: Velveteen_83 Start: 47656, Stop: 47835, Start Num: 37
Candidate Starts for Velveteen_83:
(23, 47584), (Start: 35 @47641 has 7 MA's), (Start: 37 @47656 has 194 MA's), (49, 47767), (55, 47782),

Gene: Veteran_81 Start: 50144, Stop: 50323, Start Num: 37

Candidate Starts for Veteran_81:
(Start: 37 @50144 has 194 MA's), (55, 50270),

Gene: Wachhund_85 Start: 47819, Stop: 48001, Start Num: 37
Candidate Starts for Wachhund_85:
(Start: 37 @47819 has 194 MA's), (45, 47897), (55, 47948),

Gene: Wee_94 Start: 52974, Stop: 53153, Start Num: 37
Candidate Starts for Wee_94:
(23, 52902), (Start: 35 @52959 has 7 MA's), (Start: 37 @52974 has 194 MA's), (49, 53085), (55, 53100),

Gene: Whatsapiecost_80 Start: 45661, Stop: 45843, Start Num: 37
Candidate Starts for Whatsapiecost_80:
(Start: 37 @45661 has 194 MA's), (45, 45739), (51, 45778), (55, 45790),

Gene: Whouxphf_88 Start: 51159, Stop: 51338, Start Num: 37
Candidate Starts for Whouxphf_88:
(Start: 37 @51159 has 194 MA's), (45, 51234), (55, 51285),

Gene: Wiggin_84 Start: 51326, Stop: 51514, Start Num: 38
Candidate Starts for Wiggin_84:
(1, 50852), (6, 51017), (Start: 38 @51326 has 122 MA's), (41, 51356), (42, 51380), (46, 51410), (55, 51461),

Gene: WillSterrel_86 Start: 51094, Stop: 51273, Start Num: 37
Candidate Starts for WillSterrel_86:
(26, 51046), (Start: 37 @51094 has 194 MA's), (55, 51220),

Gene: Willez_77 Start: 49522, Stop: 49710, Start Num: 38
Candidate Starts for Willez_77:
(1, 49048), (6, 49213), (Start: 38 @49522 has 122 MA's), (41, 49552), (42, 49576), (46, 49606), (55, 49657),

Gene: XFactor_80 Start: 49287, Stop: 49466, Start Num: 37
Candidate Starts for XFactor_80:
(14, 49113), (16, 49122), (18, 49146), (21, 49164), (31, 49257), (Start: 34 @49266 has 4 MA's), (Start: 37 @49287 has 194 MA's), (45, 49362), (55, 49413),

Gene: Xandras_81 Start: 50734, Stop: 50922, Start Num: 38
Candidate Starts for Xandras_81:
(1, 50260), (6, 50425), (Start: 38 @50734 has 122 MA's), (41, 50764), (42, 50788), (46, 50818), (55, 50869),

Gene: YassJohnny_79 Start: 50692, Stop: 50880, Start Num: 38
Candidate Starts for YassJohnny_79:
(1, 50218), (6, 50383), (Start: 38 @50692 has 122 MA's), (41, 50722), (42, 50746), (44, 50770), (46, 50776), (55, 50827),

Gene: Yorick_80 Start: 50663, Stop: 50842, Start Num: 37
Candidate Starts for Yorick_80:
(Start: 37 @50663 has 194 MA's), (45, 50738), (55, 50789),

Gene: Yoshi_99 Start: 51375, Stop: 51554, Start Num: 37
Candidate Starts for Yoshi_99:
(Start: 37 @51375 has 194 MA's), (40, 51399), (45, 51450), (49, 51486), (55, 51501),

Gene: Youngblood_85 Start: 52204, Stop: 52392, Start Num: 38
Candidate Starts for Youngblood_85:
(1, 51730), (6, 51895), (Start: 38 @52204 has 122 MA's), (41, 52234), (42, 52258), (46, 52288), (55, 52339),

Gene: Zapner_94 Start: 49004, Stop: 49183, Start Num: 37
Candidate Starts for Zapner_94:
(23, 48932), (Start: 35 @48989 has 7 MA's), (Start: 37 @49004 has 194 MA's), (49, 49115), (55, 49130),

Gene: Zerg_88 Start: 50607, Stop: 50786, Start Num: 37
Candidate Starts for Zerg_88:
(Start: 37 @50607 has 194 MA's), (55, 50733),

Gene: Zizzle_90 Start: 52056, Stop: 52235, Start Num: 37
Candidate Starts for Zizzle_90:
(21, 51933), (31, 52026), (Start: 34 @52035 has 4 MA's), (Start: 37 @52056 has 194 MA's), (45, 52131), (55, 52182),

Gene: ZoeJ_69 Start: 45716, Stop: 45883, Start Num: 39
Candidate Starts for ZoeJ_69:
(25, 45656), (Start: 39 @45716 has 10 MA's), (41, 45740), (43, 45776),

Gene: xkcd_85 Start: 52391, Stop: 52579, Start Num: 38
Candidate Starts for xkcd_85:
(1, 51917), (6, 52082), (Start: 38 @52391 has 122 MA's), (41, 52421), (42, 52445), (46, 52475), (55, 52526),