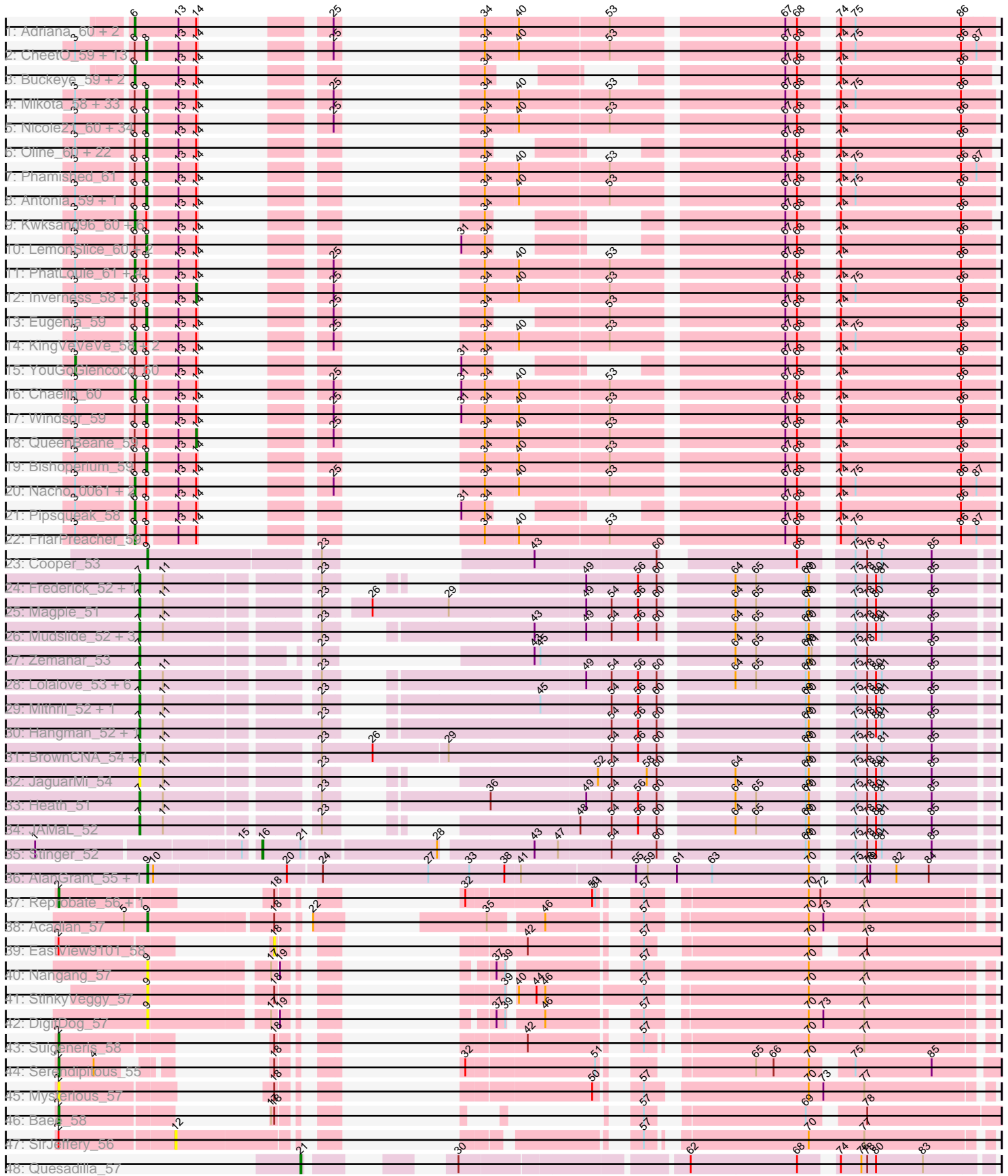


Pham 168005



Note: Tracks are now grouped by subcluster and scaled. Switching in subcluster is indicated by changes in track color. Track scale is now set by default to display the region 30 bp upstream of start 1 to 30 bp downstream of the last possible start. If this default region is judged to be packed too tightly with annotated starts, the track will be further scaled to only show that region of the ORF with annotated starts. This action will be indicated by adding "Zoomed" to the title. For starts, yellow indicates the location of called starts comprised solely of Glimmer/GeneMark auto-annotations, green indicates the location of called starts with at least 1 manual gene annotation.

Pham 168005 Report

This analysis was run 07/09/24 on database version 566.

Pham number 168005 has 189 members, 24 are drafts.

Phages represented in each track:

- Track 1 : Adriana_60, Lopsy_57, Orfeu_58
- Track 2 : CheetO_59, AbsoluteMadLad_60, Prickles_61, Daka_62, Valjean_59, Spartan300_59, Boehler_59, Tooj_58, Numberten_59, Chunky_58, Roscoe_60, Eremos_59, Zaider_60, KLucky39_58
- Track 3 : Buckeye_59, Toni_58, Podrick_57
- Track 4 : Mikota_58, Sheila_57, BlueHusk_61, Mag7_60, KlimbOn_59, Basato_60, Horchata_58, Tomlarah_60, Doddsville_60, ShiVal_57, Vaticameos_56, Dingo_58, Etaye_61, RedMaple_61, Crownjwl_59, Schadenfreude_59, Phleuron_60, Dice_61, HSavage_58, Soto_58, MichaelPhcott_60, Kailash_60, Carthage_58, DuchessDung_61, Pops_59, Nyala_58, Selr12_61, OliverWalter_58, Kloppinator_60, Hartsy_60, SDcharge11_59, Newman_58, BatteryCK_60, Olak_60
- Track 5 : Nicole21_60, Samaymay_59, DirtJuice_60, Haleema_58, Sigman_60, CamL_59, LuckyMarjie_57, Frankicide_58, Ricotta_59, Lulumae_57, AltPhacts_59, JangoPhett_59, Phunky_58, ProfessorX_59, Pacifista_62, DoesntMatter_57, Roy17_58, Mecca_59, Virapocalypse_60, True_58, Simielle_59, Lego3393_58, Iridoclysis_60, JacAttac_61, Mesh1_61, Kimbrough_60, Dione_57, Lumine_60, Omniscient_60, Phareon_58, MiniBoss_57, Plmatters_58, Bluephacebaby_59, Freya_57, Riggan_60
- Track 6 : Oline_60, PhrankReynolds_59, ImtiyazSitla_61, Hamish_58, Phergie_61, MRabcd_59, Zonia_61, Thunderbird_60, Wallhey_60, CharlieGBrown_60, Veritas_61, Labeouficaum_60, TyrionL_60, Jiminy_60, Duggie_60, Trypo_62, Derpp_59, Haimas_58, JakeO_60, MelsMeow_60, Maskar_61, Struggle_60, Ashraf_61
- Track 7 : Phamished_61
- Track 8 : Antonia_59, Aelin_59
- Track 9 : Kwksand96_60, Pinkman_59, Jiraiya_63, PhenghisKhan_60, Gophee_61, GeneCoco_60, Schueller_61
- Track 10 : LemonSlice_60, Cobra_61, Legolas_61
- Track 11 : PhatLouie_61, Swiphy_63, Banjo_58, Chute_61, Virgeve_59
- Track 12 : Inverness_58, Gwilliam_61, Roliet_57, Robyn_59
- Track 13 : Eugenia_59
- Track 14 : KingVeVeVe_58, Vaishali24_58, EmpTee_59
- Track 15 : YouGoGlencoco_60
- Track 16 : Chaelin_60
- Track 17 : Windsor_59
- Track 18 : QueenBeane_59
- Track 19 : Bishoperium_59

- Track 20 : Nacho_0061, Olive_59, Gyarad_0058
- Track 21 : Pipsqueak_58
- Track 22 : FriarPreacher_59
- Track 23 : Cooper_53
- Track 24 : Frederick_52, RawrgerThat_53
- Track 25 : Magpie_51
- Track 26 : Mudslide_52, Prince_53, Apex_53, Austelle_53
- Track 27 : Zemanar_53
- Track 28 : Lolalove_53, Ahwei_51, Nanao_51, Poster_51, Fortunato_53, ChrisnMich_52, Hydro_52
- Track 29 : Mithril_52, VioletZ_54
- Track 30 : Hangman_52, BobbyK_53
- Track 31 : BrownCNA_54, Waleliano_52
- Track 32 : JaguarMi_54
- Track 33 : Heath_51
- Track 34 : JAMaL_52
- Track 35 : Stinger_52
- Track 36 : AlanGrant_55, Vincenzo_54
- Track 37 : Reprobate_56, Phelemich_55
- Track 38 : Acadian_57
- Track 39 : EastView9101_58
- Track 40 : Nangang_57
- Track 41 : StinkyVeggy_57
- Track 42 : DigitDog_57
- Track 43 : Suigeneris_58
- Track 44 : Serendipitous_55
- Track 45 : Mysterious_57
- Track 46 : Bae_58
- Track 47 : SirJeffery_56
- Track 48 : Quesadilla_57

Summary of Final Annotations (See graph section above for start numbers):

The start number called the most often in the published annotations is 8, it was called in 109 of the 165 non-draft genes in the pham.

Genes that call this "Most Annotated" start:

- AbsoluteMadLad_60, Aelin_59, AltPhacts_59, Antonia_59, Ashraf_61, Basato_60, BatteryCK_60, Bishoperium_59, BlueHusk_61, Bluephacebaby_59, Boehler_59, CamL_59, Carthage_58, CharlieGBrown_60, CheetO_59, Chunky_58, Cobra_61, Crownjwl_59, Daka_62, Derpp_59, Dice_61, Dingo_58, Dione_57, DirtJuice_60, Doddsville_60, DoesntMatter_57, DuchessDung_61, Duggie_60, Eremos_59, Etaye_61, Eugenia_59, Frankicide_58, Freya_57, HSavage_58, Haimas_58, Haleema_58, Hamish_58, Hartsy_60, Horchata_58, ImtiyazSitla_61, Iridoclysis_60, JacAttac_61, JakeO_60, JangoPhett_59, Jiminy_60, KLucky39_58, Kailash_60, Kimbrough_60, KlimbOn_59, Kloppinator_60, Labeouficaum_60, Lego3393_58, Legolas_61, LemonSlice_60, LuckyMarjie_57, Lulumae_57, Lumine_60, MRabcd_59, Mag7_60, Maskar_61, Mecca_59, MelsMeow_60, Mesh1_61, MichaelPhcott_60, Mikota_58, MiniBoss_57, Newman_58, Nicole21_60, Numberten_59, Nyala_58, Olak_60, Oline_60, OliverWalter_58, Omniscient_60, Pacifista_62, Phamished_61,

Phareon_58, Phergie_61, Phleuron_60, PhrankReynolds_59, Phunky_58, Plmatters_58, Pops_59, Prickles_61, ProfessorX_59, RedMaple_61, Ricotta_59, Riggan_60, Roscoe_60, Roy17_58, SDcharge11_59, Samaymay_59, Schadenfreude_59, Selr12_61, Sheila_57, ShiVal_57, Sigman_60, Simielle_59, Soto_58, Spartan300_59, Struggle_60, Thunderbird_60, Tomlarah_60, Tooj_58, True_58, Trypo_62, TyrionL_60, Valjean_59, Vaticameos_56, Veritas_61, Virapocalypse_60, Wallhey_60, Windsor_59, Zaider_60, Zonia_61,

Genes that have the "Most Annotated" start but do not call it:

- Banjo_58, Chaelin_60, Chute_61, EmpTee_59, FriarPreacher_59, GeneCoco_60, Gophee_61, Gwilliam_61, Gyarad_0058, Inverness_58, Jiraiya_63, KingVeVeVe_58, Kwksand96_60, Nacho_0061, Olive_59, PhatLouie_61, PhenghisKhan_60, Pinkman_59, Pipsqueak_58, QueenBeane_59, Robyn_59, Roliet_57, Schueller_61, Swiphy_63, Vaishali24_58, Virgeve_59, YouGoGlencoco_60,

Genes that do not have the "Most Annotated" start:

- Acadian_57, Adriana_60, Ahwei_51, AlanGrant_55, Apex_53, Austelle_53, Bae_58, BobbyK_53, BrownCNA_54, Buckeye_59, ChrisnMich_52, Cooper_53, DigitDog_57, EastView9101_58, Fortunato_53, Frederick_52, Hangman_52, Heath_51, Hydro_52, JAMaL_52, JaguarMi_54, Lolalove_53, Lopsy_57, Magpie_51, Mithril_52, Mudslide_52, Mysterious_57, Nanao_51, Nangang_57, Orfeu_58, Phelemich_55, Podrick_57, Poster_51, Prince_53, Quesadilla_57, RawrgerThat_53, Reprobate_56, Serendipitous_55, SirJeffery_56, Stinger_52, StinkyVeggy_57, Suigeneris_58, Toni_58, Vincenzo_54, VioletZ_54, Waleliano_52, Zemanar_53,

Summary by start number:

Start 2:

- Found in 8 of 189 (4.2%) of genes in pham
- Manual Annotations of this start: 5 of 165
- Called 75.0% of time when present
- Phage (with cluster) where this start called: Bae_58 (B5), Mysterious_57 (B5), Phelemich_55 (B5), Reprobate_56 (B5), Serendipitous_55 (B5), Suigeneris_58 (B5),

Start 3:

- Found in 142 of 189 (75.1%) of genes in pham
- Manual Annotations of this start: 1 of 165
- Called 0.7% of time when present
- Phage (with cluster) where this start called: YouGoGlencoco_60 (B1),

Start 6:

- Found in 148 of 189 (78.3%) of genes in pham
- Manual Annotations of this start: 22 of 165
- Called 18.2% of time when present
- Phage (with cluster) where this start called: Adriana_60 (B1), Banjo_58 (B1), Buckeye_59 (B1), Chaelin_60 (B1), Chute_61 (B1), EmpTee_59 (B1), FriarPreacher_59 (B1), GeneCoco_60 (B1), Gophee_61 (B1), Gyarad_0058 (B1), Jiraiya_63 (B1), KingVeVeVe_58 (B1), Kwksand96_60 (B1), Lopsy_57 (B1), Nacho_0061 (B1), Olive_59 (B1), Orfeu_58 (B1), PhatLouie_61 (B1), PhenghisKhan_60 (B1), Pinkman_59 (B1), Pipsqueak_58 (B1), Podrick_57 (B1), Schueller_61 (B1), Swiphy_63 (B1), Toni_58 (B1), Vaishali24_58 (B1), Virgeve_59 (B1),

Start 7:

- Found in 24 of 189 (12.7%) of genes in pham
- Manual Annotations of this start: 18 of 165
- Called 100.0% of time when present
- Phage (with cluster) where this start called: Ahwei_51 (B4), Apex_53 (B4), Austelle_53 (B4), BobbyK_53 (B4), BrownCNA_54 (B4), ChrisnMich_52 (B4), Fortunato_53 (B4), Frederick_52 (B4), Hangman_52 (B4), Heath_51 (B4), Hydro_52 (B4), JAMaL_52 (B4), JaguarMi_54 (B4), Lolalove_53 (B4), Magpie_51 (B4), Mithril_52 (B4), Mudslide_52 (B4), Nanao_51 (B4), Poster_51 (B4), Prince_53 (B4), RawrgerThat_53 (B4), VioletZ_54 (B4), Waleliano_52 (B4), Zemanar_53 (B4),

Start 8:

- Found in 142 of 189 (75.1%) of genes in pham
- Manual Annotations of this start: 109 of 165
- Called 81.0% of time when present
- Phage (with cluster) where this start called: AbsoluteMadLad_60 (B1), Aelin_59 (B1), AltPhacts_59 (B1), Antonia_59 (B1), Ashraf_61 (B1), Basato_60 (B1), BatteryCK_60 (B1), Bishoperium_59 (B1), BlueHusk_61 (B1), Bluephacebaby_59 (B1), Boehler_59 (B1), CamL_59 (B1), Carthage_58 (B1), CharlieGBrown_60 (B1), CheetO_59 (B1), Chunky_58 (B1), Cobra_61 (B1), Crownjwl_59 (B1), Daka_62 (B1), Derpp_59 (B1), Dice_61 (B1), Dingo_58 (B1), Dione_57 (B1), DirtJuice_60 (B1), Doddsville_60 (B1), DoesntMatter_57 (B1), DuchessDung_61 (B1), Duggie_60 (B1), Eremos_59 (B1), Etaye_61 (B1), Eugenia_59 (B1), Frankicide_58 (B1), Freya_57 (B1), HSavage_58 (B1), Haimas_58 (B1), Haleema_58 (B1), Hamish_58 (B1), Hartsy_60 (B1), Horchata_58 (B1), ImtiyazSitla_61 (B1), Iridoclysis_60 (B1), JacAttac_61 (B1), JakeO_60 (B1), JangoPhett_59 (B1), Jiminy_60 (B1), KLucky39_58 (B1), Kailash_60 (B1), Kimbrough_60 (B1), KlimbOn_59 (B1), Kloppinator_60 (B1), Labeouficaum_60 (B1), Lego3393_58 (B1), Legolas_61 (B1), LemonSlice_60 (B1), LuckyMarjie_57 (B1), Lulumae_57 (B1), Lumine_60 (B1), MRabcd_59 (B1), Mag7_60 (B1), Maskar_61 (B1), Mecca_59 (B1), MelsMeow_60 (B1), Mesh1_61 (B1), MichaelPhcott_60 (B1), Mikota_58 (B1), MiniBoss_57 (B1), Newman_58 (B1), Nicole21_60 (B1), Numberten_59 (B1), Nyala_58 (B1), Olak_60 (B1), Oline_60 (B1), OliverWalter_58 (B1), Omniscient_60 (B1), Pacifista_62 (B1), Phamished_61 (B1), Phareon_58 (B1), Phergie_61 (B1), Phleuron_60 (B1), PhrankReynolds_59 (B1), Phunky_58 (B1), Plmatters_58 (B1), Pops_59 (B1), Prickles_61 (B1), ProfessorX_59 (B1), RedMaple_61 (B1), Ricotta_59 (B1), Riggan_60 (B1), Roscoe_60 (B1), Roy17_58 (B1), SDcharge11_59 (B1), Samaymay_59 (B1), Schadenfreude_59 (B1), Selr12_61 (B1), Sheila_57 (B1), ShiVal_57 (B1), Sigman_60 (B1), Simielle_59 (B1), Soto_58 (B1), Spartan300_59 (B1), Struggle_60 (B1), Thunderbird_60 (B1), Tomlarah_60 (B1), Tooj_58 (B1), True_58 (B1), Trypo_62 (B1), TyrionL_60 (B1), Valjean_59 (B1), Vaticameos_56 (B1), Veritas_61 (B1), Virapocalypse_60 (B1), Wallhey_60 (B1), Windsor_59 (B1), Zaider_60 (B1), Zonia_61 (B1),

Start 9:

- Found in 7 of 189 (3.7%) of genes in pham
- Manual Annotations of this start: 4 of 165
- Called 100.0% of time when present
- Phage (with cluster) where this start called: Acadian_57 (B5), AlanGrant_55 (B4), Cooper_53 (B4), DigitDog_57 (B5), Nangang_57 (B5), StinkyVeggy_57 (B5), Vincenzo_54 (B4),

Start 12:

- Found in 1 of 189 (0.5%) of genes in pham
- No Manual Annotations of this start.
- Called 100.0% of time when present
- Phage (with cluster) where this start called: SirJeffery_56 (B5),

Start 14:

- Found in 148 of 189 (78.3%) of genes in pham
- Manual Annotations of this start: 4 of 165
- Called 3.4% of time when present
- Phage (with cluster) where this start called: Gwilliam_61 (B1), Inverness_58 (B1), QueenBeane_59 (B1), Robyn_59 (B1), Roliet_57 (B1),

Start 16:

- Found in 1 of 189 (0.5%) of genes in pham
- Manual Annotations of this start: 1 of 165
- Called 100.0% of time when present
- Phage (with cluster) where this start called: Stinger_52 (B4),

Start 18:

- Found in 9 of 189 (4.8%) of genes in pham
- No Manual Annotations of this start.
- Called 11.1% of time when present
- Phage (with cluster) where this start called: EastView9101_58 (B5),

Start 21:

- Found in 2 of 189 (1.1%) of genes in pham
- Manual Annotations of this start: 1 of 165
- Called 50.0% of time when present
- Phage (with cluster) where this start called: Quesadilla_57 (B9),

Summary by clusters:

There are 4 clusters represented in this pham: B4, B5, B1, B9,

Info for manual annotations of cluster B1:

- Start number 3 was manually annotated 1 time for cluster B1.
- Start number 6 was manually annotated 22 times for cluster B1.
- Start number 8 was manually annotated 109 times for cluster B1.
- Start number 14 was manually annotated 4 times for cluster B1.

Info for manual annotations of cluster B4:

- Start number 7 was manually annotated 18 times for cluster B4.
- Start number 9 was manually annotated 3 times for cluster B4.
- Start number 16 was manually annotated 1 time for cluster B4.

Info for manual annotations of cluster B5:

- Start number 2 was manually annotated 5 times for cluster B5.
- Start number 9 was manually annotated 1 time for cluster B5.

Info for manual annotations of cluster B9:

- Start number 21 was manually annotated 1 time for cluster B9.

Gene Information:

Gene: AbsoluteMadLad_60 Start: 52630, Stop: 52019, Start Num: 8

Candidate Starts for AbsoluteMadLad_60:

(Start: 3 @52696 has 1 MA's), (Start: 6 @52642 has 22 MA's), (Start: 8 @52630 has 109 MA's), (13, 52603), (Start: 14 @52585 has 4 MA's), (25, 52531), (34, 52498), (40, 52465), (53, 52375), (67, 52213), (68, 52201), (74, 52174), (75, 52159), (86, 52051), (87, 52036),

Gene: Acadian_57 Start: 52639, Stop: 51956, Start Num: 9

Candidate Starts for Acadian_57:

(5, 52663), (Start: 9 @52639 has 4 MA's), (18, 52519), (22, 52498), (35, 52399), (46, 52351), (57, 52279), (70, 52132), (73, 52117), (77, 52075),

Gene: Adriana_60 Start: 52733, Stop: 52104, Start Num: 6

Candidate Starts for Adriana_60:

(Start: 6 @52733 has 22 MA's), (13, 52688), (Start: 14 @52670 has 4 MA's), (25, 52616), (34, 52583), (40, 52550), (53, 52460), (67, 52298), (68, 52286), (74, 52259), (75, 52244), (86, 52136),

Gene: Aelin_59 Start: 52194, Stop: 51583, Start Num: 8

Candidate Starts for Aelin_59:

(Start: 3 @52260 has 1 MA's), (Start: 6 @52206 has 22 MA's), (Start: 8 @52194 has 109 MA's), (13, 52167), (Start: 14 @52149 has 4 MA's), (34, 52062), (40, 52029), (53, 51939), (67, 51777), (68, 51765), (74, 51738), (75, 51723), (86, 51615),

Gene: Ahwei_51 Start: 51165, Stop: 50473, Start Num: 7

Candidate Starts for Ahwei_51:

(Start: 7 @51165 has 18 MA's), (11, 51141), (23, 51006), (49, 50847), (54, 50823), (56, 50796), (60, 50778), (64, 50712), (65, 50691), (69, 50640), (70, 50637), (75, 50607), (78, 50595), (80, 50586), (81, 50580), (85, 50529),

Gene: AlanGrant_55 Start: 53102, Stop: 52275, Start Num: 9

Candidate Starts for AlanGrant_55:

(Start: 9 @53102 has 4 MA's), (10, 53096), (20, 52961), (24, 52928), (27, 52820), (33, 52778), (38, 52742), (41, 52727), (55, 52616), (59, 52604), (61, 52574), (63, 52538), (70, 52439), (75, 52409), (78, 52397), (79, 52394), (82, 52367), (84, 52334),

Gene: AltPhacts_59 Start: 51743, Stop: 51132, Start Num: 8

Candidate Starts for AltPhacts_59:

(Start: 3 @51809 has 1 MA's), (Start: 6 @51755 has 22 MA's), (Start: 8 @51743 has 109 MA's), (13, 51716), (Start: 14 @51698 has 4 MA's), (25, 51644), (34, 51611), (40, 51578), (53, 51488), (67, 51326), (68, 51314), (74, 51287), (86, 51164),

Gene: Antonia_59 Start: 52194, Stop: 51583, Start Num: 8

Candidate Starts for Antonia_59:

(Start: 3 @52260 has 1 MA's), (Start: 6 @52206 has 22 MA's), (Start: 8 @52194 has 109 MA's), (13, 52167), (Start: 14 @52149 has 4 MA's), (34, 52062), (40, 52029), (53, 51939), (67, 51777), (68, 51765), (74, 51738), (75, 51723), (86, 51615),

Gene: Apex_53 Start: 52379, Stop: 51633, Start Num: 7

Candidate Starts for Apex_53:

(Start: 7 @52379 has 18 MA's), (11, 52355), (23, 52220), (43, 52058), (49, 52007), (54, 51983), (56, 51956), (60, 51938), (64, 51872), (65, 51851), (69, 51800), (70, 51797), (75, 51767), (78, 51755), (80, 51746), (81, 51740), (85, 51689),

Gene: Ashraf_61 Start: 52401, Stop: 51892, Start Num: 8

Candidate Starts for Ashraf_61:

(Start: 3 @52467 has 1 MA's), (Start: 6 @52413 has 22 MA's), (Start: 8 @52401 has 109 MA's), (13, 52374), (Start: 14 @52356 has 4 MA's), (34, 52269), (67, 52083), (68, 52071), (74, 52044), (86, 51921),

Gene: Austelle_53 Start: 52832, Stop: 52086, Start Num: 7

Candidate Starts for Austelle_53:

(Start: 7 @52832 has 18 MA's), (11, 52808), (23, 52673), (43, 52511), (49, 52460), (54, 52436), (56, 52409), (60, 52391), (64, 52325), (65, 52304), (69, 52253), (70, 52250), (75, 52220), (78, 52208), (80, 52199), (81, 52193), (85, 52142),

Gene: Bae_58 Start: 53704, Stop: 53204, Start Num: 2

Candidate Starts for Bae_58:

(Start: 2 @53704 has 5 MA's), (17, 53590), (18, 53587), (57, 53518), (69, 53383), (78, 53338),

Gene: Banjo_58 Start: 52199, Stop: 51576, Start Num: 6

Candidate Starts for Banjo_58:

(Start: 3 @52253 has 1 MA's), (Start: 6 @52199 has 22 MA's), (Start: 8 @52187 has 109 MA's), (13, 52160), (Start: 14 @52142 has 4 MA's), (25, 52088), (34, 52055), (40, 52022), (53, 51932), (67, 51770), (68, 51758), (74, 51731), (86, 51608),

Gene: Basato_60 Start: 52461, Stop: 51850, Start Num: 8

Candidate Starts for Basato_60:

(Start: 3 @52527 has 1 MA's), (Start: 6 @52473 has 22 MA's), (Start: 8 @52461 has 109 MA's), (13, 52434), (Start: 14 @52416 has 4 MA's), (25, 52362), (34, 52329), (40, 52296), (53, 52206), (67, 52044), (68, 52032), (74, 52005), (75, 51990), (86, 51882),

Gene: BatteryCK_60 Start: 52337, Stop: 51729, Start Num: 8

Candidate Starts for BatteryCK_60:

(Start: 3 @52403 has 1 MA's), (Start: 6 @52349 has 22 MA's), (Start: 8 @52337 has 109 MA's), (13, 52310), (Start: 14 @52292 has 4 MA's), (25, 52238), (34, 52205), (40, 52172), (53, 52082), (67, 51920), (68, 51908), (74, 51881), (75, 51866), (86, 51758),

Gene: Bishoperium_59 Start: 52726, Stop: 52115, Start Num: 8

Candidate Starts for Bishoperium_59:

(Start: 3 @52792 has 1 MA's), (Start: 6 @52738 has 22 MA's), (Start: 8 @52726 has 109 MA's), (13, 52699), (Start: 14 @52681 has 4 MA's), (34, 52594), (40, 52561), (53, 52471), (67, 52309), (68, 52297), (74, 52270), (86, 52147),

Gene: BlueHusk_61 Start: 52210, Stop: 51599, Start Num: 8

Candidate Starts for BlueHusk_61:

(Start: 3 @52276 has 1 MA's), (Start: 6 @52222 has 22 MA's), (Start: 8 @52210 has 109 MA's), (13, 52183), (Start: 14 @52165 has 4 MA's), (25, 52111), (34, 52078), (40, 52045), (53, 51955), (67, 51793), (68, 51781), (74, 51754), (75, 51739), (86, 51631),

Gene: Bluephacebaby_59 Start: 52729, Stop: 52118, Start Num: 8

Candidate Starts for Bluephacebaby_59:

(Start: 3 @52795 has 1 MA's), (Start: 6 @52741 has 22 MA's), (Start: 8 @52729 has 109 MA's), (13, 52702), (Start: 14 @52684 has 4 MA's), (25, 52630), (34, 52597), (40, 52564), (53, 52474), (67, 52312), (68, 52300), (74, 52273), (86, 52150),

Gene: BobbyK_53 Start: 52148, Stop: 51396, Start Num: 7

Candidate Starts for BobbyK_53:

(Start: 7 @52148 has 18 MA's), (11, 52124), (23, 51983), (54, 51746), (56, 51719), (60, 51701), (69, 51563), (70, 51560), (75, 51530), (78, 51518), (80, 51509), (81, 51503), (85, 51452),

Gene: Boehler_59 Start: 52373, Stop: 51762, Start Num: 8

Candidate Starts for Boehler_59:

(Start: 3 @52439 has 1 MA's), (Start: 6 @52385 has 22 MA's), (Start: 8 @52373 has 109 MA's), (13, 52346), (Start: 14 @52328 has 4 MA's), (25, 52274), (34, 52241), (40, 52208), (53, 52118), (67, 51956), (68, 51944), (74, 51917), (75, 51902), (86, 51794), (87, 51779),

Gene: BrownCNA_54 Start: 52490, Stop: 51693, Start Num: 7

Candidate Starts for BrownCNA_54:

(Start: 7 @52490 has 18 MA's), (11, 52466), (23, 52331), (26, 52280), (29, 52205), (54, 52043), (56, 52016), (60, 51998), (69, 51860), (70, 51857), (75, 51827), (78, 51815), (81, 51800), (85, 51749),

Gene: Buckeye_59 Start: 52463, Stop: 51936, Start Num: 6

Candidate Starts for Buckeye_59:

(Start: 6 @52463 has 22 MA's), (13, 52418), (Start: 14 @52400 has 4 MA's), (34, 52313), (67, 52127), (68, 52115), (74, 52088), (86, 51965),

Gene: CamL_59 Start: 52494, Stop: 51883, Start Num: 8

Candidate Starts for CamL_59:

(Start: 3 @52560 has 1 MA's), (Start: 6 @52506 has 22 MA's), (Start: 8 @52494 has 109 MA's), (13, 52467), (Start: 14 @52449 has 4 MA's), (25, 52395), (34, 52362), (40, 52329), (53, 52239), (67, 52077), (68, 52065), (74, 52038), (86, 51915),

Gene: Carthage_58 Start: 51673, Stop: 51065, Start Num: 8

Candidate Starts for Carthage_58:

(Start: 3 @51739 has 1 MA's), (Start: 6 @51685 has 22 MA's), (Start: 8 @51673 has 109 MA's), (13, 51646), (Start: 14 @51628 has 4 MA's), (25, 51574), (34, 51541), (40, 51508), (53, 51418), (67, 51256), (68, 51244), (74, 51217), (75, 51202), (86, 51094),

Gene: Chaelin_60 Start: 52736, Stop: 52113, Start Num: 6

Candidate Starts for Chaelin_60:

(Start: 3 @52790 has 1 MA's), (Start: 6 @52736 has 22 MA's), (Start: 8 @52724 has 109 MA's), (13, 52697), (Start: 14 @52679 has 4 MA's), (25, 52625), (31, 52616), (34, 52592), (40, 52559), (53, 52469), (67, 52307), (68, 52295), (74, 52268), (86, 52145),

Gene: CharlieGBrown_60 Start: 52287, Stop: 51778, Start Num: 8

Candidate Starts for CharlieGBrown_60:

(Start: 3 @52353 has 1 MA's), (Start: 6 @52299 has 22 MA's), (Start: 8 @52287 has 109 MA's), (13, 52260), (Start: 14 @52242 has 4 MA's), (34, 52155), (67, 51969), (68, 51957), (74, 51930), (86, 51807),

Gene: CheetO_59 Start: 52410, Stop: 51799, Start Num: 8

Candidate Starts for CheetO_59:

(Start: 3 @52476 has 1 MA's), (Start: 6 @52422 has 22 MA's), (Start: 8 @52410 has 109 MA's), (13, 52383), (Start: 14 @52365 has 4 MA's), (25, 52311), (34, 52278), (40, 52245), (53, 52155), (67, 51993), (68, 51981), (74, 51954), (75, 51939), (86, 51831), (87, 51816),

Gene: ChrisnMich_52 Start: 51144, Stop: 50398, Start Num: 7

Candidate Starts for ChrisnMich_52:

(Start: 7 @51144 has 18 MA's), (11, 51120), (23, 50985), (49, 50772), (54, 50748), (56, 50721), (60, 50703), (64, 50637), (65, 50616), (69, 50565), (70, 50562), (75, 50532), (78, 50520), (80, 50511), (81, 50505), (85, 50454),

Gene: Chunky_58 Start: 51740, Stop: 51129, Start Num: 8

Candidate Starts for Chunky_58:

(Start: 3 @51806 has 1 MA's), (Start: 6 @51752 has 22 MA's), (Start: 8 @51740 has 109 MA's), (13, 51713), (Start: 14 @51695 has 4 MA's), (25, 51641), (34, 51608), (40, 51575), (53, 51485), (67, 51323), (68, 51311), (74, 51284), (75, 51269), (86, 51161), (87, 51146),

Gene: Chute_61 Start: 52764, Stop: 52141, Start Num: 6

Candidate Starts for Chute_61:

(Start: 3 @52818 has 1 MA's), (Start: 6 @52764 has 22 MA's), (Start: 8 @52752 has 109 MA's), (13, 52725), (Start: 14 @52707 has 4 MA's), (25, 52653), (34, 52620), (40, 52587), (53, 52497), (67, 52335), (68, 52323), (74, 52296), (86, 52173),

Gene: Cobra_61 Start: 52730, Stop: 52221, Start Num: 8

Candidate Starts for Cobra_61:

(Start: 3 @52796 has 1 MA's), (Start: 6 @52742 has 22 MA's), (Start: 8 @52730 has 109 MA's), (13, 52703), (Start: 14 @52685 has 4 MA's), (31, 52622), (34, 52598), (67, 52412), (68, 52400), (74, 52373), (86, 52250),

Gene: Cooper_53 Start: 51371, Stop: 50706, Start Num: 9

Candidate Starts for Cooper_53:

(Start: 9 @51371 has 4 MA's), (23, 51209), (43, 51119), (60, 50999), (68, 50885), (75, 50840), (78, 50828), (81, 50813), (85, 50762),

Gene: Crownjwl_59 Start: 52213, Stop: 51602, Start Num: 8

Candidate Starts for Crownjwl_59:

(Start: 3 @52279 has 1 MA's), (Start: 6 @52225 has 22 MA's), (Start: 8 @52213 has 109 MA's), (13, 52186), (Start: 14 @52168 has 4 MA's), (25, 52114), (34, 52081), (40, 52048), (53, 51958), (67, 51796), (68, 51784), (74, 51757), (75, 51742), (86, 51634),

Gene: Daka_62 Start: 52693, Stop: 52082, Start Num: 8

Candidate Starts for Daka_62:

(Start: 3 @52759 has 1 MA's), (Start: 6 @52705 has 22 MA's), (Start: 8 @52693 has 109 MA's), (13, 52666), (Start: 14 @52648 has 4 MA's), (25, 52594), (34, 52561), (40, 52528), (53, 52438), (67, 52276), (68, 52264), (74, 52237), (75, 52222), (86, 52114), (87, 52099),

Gene: Derpp_59 Start: 52275, Stop: 51766, Start Num: 8

Candidate Starts for Derpp_59:

(Start: 3 @52341 has 1 MA's), (Start: 6 @52287 has 22 MA's), (Start: 8 @52275 has 109 MA's), (13, 52248), (Start: 14 @52230 has 4 MA's), (34, 52143), (67, 51957), (68, 51945), (74, 51918), (86, 51795),

Gene: Dice_61 Start: 52160, Stop: 51549, Start Num: 8

Candidate Starts for Dice_61:

(Start: 3 @52226 has 1 MA's), (Start: 6 @52172 has 22 MA's), (Start: 8 @52160 has 109 MA's), (13, 52133), (Start: 14 @52115 has 4 MA's), (25, 52061), (34, 52028), (40, 51995), (53, 51905), (67, 51743), (68, 51731), (74, 51704), (75, 51689), (86, 51581),

Gene: DigitDog_57 Start: 52573, Stop: 51959, Start Num: 9

Candidate Starts for DigitDog_57:

(Start: 9 @52573 has 4 MA's), (17, 52462), (19, 52456), (37, 52393), (39, 52384), (46, 52354), (57, 52282), (70, 52135), (73, 52120), (77, 52078),

Gene: Dingo_58 Start: 51719, Stop: 51108, Start Num: 8

Candidate Starts for Dingo_58:

(Start: 3 @51785 has 1 MA's), (Start: 6 @51731 has 22 MA's), (Start: 8 @51719 has 109 MA's), (13, 51692), (Start: 14 @51674 has 4 MA's), (25, 51620), (34, 51587), (40, 51554), (53, 51464), (67, 51302), (68, 51290), (74, 51263), (75, 51248), (86, 51140),

Gene: Dione_57 Start: 51891, Stop: 51280, Start Num: 8

Candidate Starts for Dione_57:

(Start: 3 @51957 has 1 MA's), (Start: 6 @51903 has 22 MA's), (Start: 8 @51891 has 109 MA's), (13, 51864), (Start: 14 @51846 has 4 MA's), (25, 51792), (34, 51759), (40, 51726), (53, 51636), (67, 51474), (68, 51462), (74, 51435), (86, 51312),

Gene: DirtJuice_60 Start: 52481, Stop: 51870, Start Num: 8

Candidate Starts for DirtJuice_60:

(Start: 3 @52547 has 1 MA's), (Start: 6 @52493 has 22 MA's), (Start: 8 @52481 has 109 MA's), (13, 52454), (Start: 14 @52436 has 4 MA's), (25, 52382), (34, 52349), (40, 52316), (53, 52226), (67, 52064), (68, 52052), (74, 52025), (86, 51902),

Gene: Doddsville_60 Start: 52427, Stop: 51819, Start Num: 8

Candidate Starts for Doddsville_60:

(Start: 3 @52493 has 1 MA's), (Start: 6 @52439 has 22 MA's), (Start: 8 @52427 has 109 MA's), (13, 52400), (Start: 14 @52382 has 4 MA's), (25, 52328), (34, 52295), (40, 52262), (53, 52172), (67, 52010), (68, 51998), (74, 51971), (75, 51956), (86, 51848),

Gene: DoesntMatter_57 Start: 52184, Stop: 51573, Start Num: 8

Candidate Starts for DoesntMatter_57:

(Start: 3 @52250 has 1 MA's), (Start: 6 @52196 has 22 MA's), (Start: 8 @52184 has 109 MA's), (13, 52157), (Start: 14 @52139 has 4 MA's), (25, 52085), (34, 52052), (40, 52019), (53, 51929), (67, 51767), (68, 51755), (74, 51728), (86, 51605),

Gene: DuchessDung_61 Start: 51944, Stop: 51336, Start Num: 8

Candidate Starts for DuchessDung_61:

(Start: 3 @52010 has 1 MA's), (Start: 6 @51956 has 22 MA's), (Start: 8 @51944 has 109 MA's), (13, 51917), (Start: 14 @51899 has 4 MA's), (25, 51845), (34, 51812), (40, 51779), (53, 51689), (67, 51527), (68, 51515), (74, 51488), (75, 51473), (86, 51365),

Gene: Duggie_60 Start: 52428, Stop: 51919, Start Num: 8

Candidate Starts for Duggie_60:

(Start: 3 @52494 has 1 MA's), (Start: 6 @52440 has 22 MA's), (Start: 8 @52428 has 109 MA's), (13, 52401), (Start: 14 @52383 has 4 MA's), (34, 52296), (67, 52110), (68, 52098), (74, 52071), (86, 51948),

Gene: EastView9101_58 Start: 52390, Stop: 51881, Start Num: 18

Candidate Starts for EastView9101_58:

(Start: 2 @52507 has 5 MA's), (18, 52390), (42, 52288), (57, 52198), (70, 52060), (78, 52018),

Gene: EmpTee_59 Start: 52412, Stop: 51792, Start Num: 6

Candidate Starts for EmpTee_59:

(Start: 3 @52466 has 1 MA's), (Start: 6 @52412 has 22 MA's), (Start: 8 @52400 has 109 MA's), (13, 52373), (Start: 14 @52355 has 4 MA's), (25, 52301), (34, 52268), (40, 52235), (53, 52145), (67,

51983), (68, 51971), (74, 51944), (75, 51929), (86, 51821),

Gene: Eremos_59 Start: 52390, Stop: 51779, Start Num: 8

Candidate Starts for Eremos_59:

(Start: 3 @52456 has 1 MA's), (Start: 6 @52402 has 22 MA's), (Start: 8 @52390 has 109 MA's), (13, 52363), (Start: 14 @52345 has 4 MA's), (25, 52291), (34, 52258), (40, 52225), (53, 52135), (67, 51973), (68, 51961), (74, 51934), (75, 51919), (86, 51811), (87, 51796),

Gene: Etaye_61 Start: 53221, Stop: 52613, Start Num: 8

Candidate Starts for Etaye_61:

(Start: 3 @53287 has 1 MA's), (Start: 6 @53233 has 22 MA's), (Start: 8 @53221 has 109 MA's), (13, 53194), (Start: 14 @53176 has 4 MA's), (25, 53122), (34, 53089), (40, 53056), (53, 52966), (67, 52804), (68, 52792), (74, 52765), (75, 52750), (86, 52642),

Gene: Eugenia_59 Start: 52543, Stop: 51974, Start Num: 8

Candidate Starts for Eugenia_59:

(Start: 3 @52609 has 1 MA's), (Start: 6 @52555 has 22 MA's), (Start: 8 @52543 has 109 MA's), (13, 52516), (Start: 14 @52498 has 4 MA's), (25, 52444), (34, 52411), (53, 52330), (67, 52168), (68, 52156), (74, 52129), (86, 52006),

Gene: Fortunato_53 Start: 52173, Stop: 51481, Start Num: 7

Candidate Starts for Fortunato_53:

(Start: 7 @52173 has 18 MA's), (11, 52149), (23, 52014), (49, 51855), (54, 51831), (56, 51804), (60, 51786), (64, 51720), (65, 51699), (69, 51648), (70, 51645), (75, 51615), (78, 51603), (80, 51594), (81, 51588), (85, 51537),

Gene: Frankicide_58 Start: 52221, Stop: 51610, Start Num: 8

Candidate Starts for Frankicide_58:

(Start: 3 @52287 has 1 MA's), (Start: 6 @52233 has 22 MA's), (Start: 8 @52221 has 109 MA's), (13, 52194), (Start: 14 @52176 has 4 MA's), (25, 52122), (34, 52089), (40, 52056), (53, 51966), (67, 51804), (68, 51792), (74, 51765), (86, 51642),

Gene: Frederick_52 Start: 52088, Stop: 51396, Start Num: 7

Candidate Starts for Frederick_52:

(Start: 7 @52088 has 18 MA's), (11, 52064), (23, 51929), (49, 51770), (56, 51719), (60, 51701), (64, 51635), (65, 51614), (69, 51563), (70, 51560), (75, 51530), (78, 51518), (80, 51509), (81, 51503), (85, 51452),

Gene: Freya_57 Start: 51882, Stop: 51271, Start Num: 8

Candidate Starts for Freya_57:

(Start: 3 @51948 has 1 MA's), (Start: 6 @51894 has 22 MA's), (Start: 8 @51882 has 109 MA's), (13, 51855), (Start: 14 @51837 has 4 MA's), (25, 51783), (34, 51750), (40, 51717), (53, 51627), (67, 51465), (68, 51453), (74, 51426), (86, 51303),

Gene: FriarPreacher_59 Start: 52280, Stop: 51657, Start Num: 6

Candidate Starts for FriarPreacher_59:

(Start: 3 @52334 has 1 MA's), (Start: 6 @52280 has 22 MA's), (Start: 8 @52268 has 109 MA's), (13, 52241), (Start: 14 @52223 has 4 MA's), (34, 52136), (40, 52103), (53, 52013), (67, 51851), (68, 51839), (74, 51812), (75, 51797), (86, 51689), (87, 51674),

Gene: GeneCoco_60 Start: 52735, Stop: 52214, Start Num: 6

Candidate Starts for GeneCoco_60:

(Start: 3 @52789 has 1 MA's), (Start: 6 @52735 has 22 MA's), (Start: 8 @52723 has 109 MA's), (13, 52696), (Start: 14 @52678 has 4 MA's), (34, 52591), (67, 52405), (68, 52393), (74, 52366), (86, 52243),

Gene: Gophee_61 Start: 52678, Stop: 52157, Start Num: 6

Candidate Starts for Gophee_61:

(Start: 3 @52732 has 1 MA's), (Start: 6 @52678 has 22 MA's), (Start: 8 @52666 has 109 MA's), (13, 52639), (Start: 14 @52621 has 4 MA's), (34, 52534), (67, 52348), (68, 52336), (74, 52309), (86, 52186),

Gene: Gwilliam_61 Start: 53029, Stop: 52463, Start Num: 14

Candidate Starts for Gwilliam_61:

(Start: 3 @53140 has 1 MA's), (Start: 6 @53086 has 22 MA's), (Start: 8 @53074 has 109 MA's), (13, 53047), (Start: 14 @53029 has 4 MA's), (25, 52975), (34, 52942), (40, 52909), (53, 52819), (67, 52657), (68, 52645), (74, 52618), (75, 52603), (86, 52495),

Gene: Gyarad_0058 Start: 51768, Stop: 51145, Start Num: 6

Candidate Starts for Gyarad_0058:

(Start: 3 @51822 has 1 MA's), (Start: 6 @51768 has 22 MA's), (Start: 8 @51756 has 109 MA's), (13, 51729), (Start: 14 @51711 has 4 MA's), (25, 51657), (34, 51624), (40, 51591), (53, 51501), (67, 51339), (68, 51327), (74, 51300), (75, 51285), (86, 51177), (87, 51162),

Gene: HSavage_58 Start: 52200, Stop: 51589, Start Num: 8

Candidate Starts for HSavage_58:

(Start: 3 @52266 has 1 MA's), (Start: 6 @52212 has 22 MA's), (Start: 8 @52200 has 109 MA's), (13, 52173), (Start: 14 @52155 has 4 MA's), (25, 52101), (34, 52068), (40, 52035), (53, 51945), (67, 51783), (68, 51771), (74, 51744), (75, 51729), (86, 51621),

Gene: Haimas_58 Start: 52117, Stop: 51605, Start Num: 8

Candidate Starts for Haimas_58:

(Start: 3 @52183 has 1 MA's), (Start: 6 @52129 has 22 MA's), (Start: 8 @52117 has 109 MA's), (13, 52090), (Start: 14 @52072 has 4 MA's), (34, 51985), (67, 51799), (68, 51787), (74, 51760), (86, 51637),

Gene: Haleema_58 Start: 52215, Stop: 51604, Start Num: 8

Candidate Starts for Haleema_58:

(Start: 3 @52281 has 1 MA's), (Start: 6 @52227 has 22 MA's), (Start: 8 @52215 has 109 MA's), (13, 52188), (Start: 14 @52170 has 4 MA's), (25, 52116), (34, 52083), (40, 52050), (53, 51960), (67, 51798), (68, 51786), (74, 51759), (86, 51636),

Gene: Hamish_58 Start: 52111, Stop: 51599, Start Num: 8

Candidate Starts for Hamish_58:

(Start: 3 @52177 has 1 MA's), (Start: 6 @52123 has 22 MA's), (Start: 8 @52111 has 109 MA's), (13, 52084), (Start: 14 @52066 has 4 MA's), (34, 51979), (67, 51793), (68, 51781), (74, 51754), (86, 51631),

Gene: Hangman_52 Start: 52233, Stop: 51475, Start Num: 7

Candidate Starts for Hangman_52:

(Start: 7 @52233 has 18 MA's), (11, 52209), (23, 52062), (54, 51825), (56, 51798), (60, 51780), (69, 51642), (70, 51639), (75, 51609), (78, 51597), (80, 51588), (81, 51582), (85, 51531),

Gene: Hartsy_60 Start: 52549, Stop: 51938, Start Num: 8

Candidate Starts for Hartsy_60:

(Start: 3 @52615 has 1 MA's), (Start: 6 @52561 has 22 MA's), (Start: 8 @52549 has 109 MA's), (13, 52522), (Start: 14 @52504 has 4 MA's), (25, 52450), (34, 52417), (40, 52384), (53, 52294), (67, 52132), (68, 52120), (74, 52093), (75, 52078), (86, 51970),

Gene: Heath_51 Start: 51844, Stop: 51098, Start Num: 7

Candidate Starts for Heath_51:

(Start: 7 @51844 has 18 MA's), (11, 51820), (23, 51685), (36, 51568), (49, 51472), (54, 51448), (56, 51421), (60, 51403), (64, 51337), (65, 51316), (69, 51265), (70, 51262), (75, 51232), (78, 51220), (80, 51211), (81, 51205), (85, 51154),

Gene: Horchata_58 Start: 52200, Stop: 51589, Start Num: 8

Candidate Starts for Horchata_58:

(Start: 3 @52266 has 1 MA's), (Start: 6 @52212 has 22 MA's), (Start: 8 @52200 has 109 MA's), (13, 52173), (Start: 14 @52155 has 4 MA's), (25, 52101), (34, 52068), (40, 52035), (53, 51945), (67, 51783), (68, 51771), (74, 51744), (75, 51729), (86, 51621),

Gene: Hydro_52 Start: 52225, Stop: 51479, Start Num: 7

Candidate Starts for Hydro_52:

(Start: 7 @52225 has 18 MA's), (11, 52201), (23, 52066), (49, 51853), (54, 51829), (56, 51802), (60, 51784), (64, 51718), (65, 51697), (69, 51646), (70, 51643), (75, 51613), (78, 51601), (80, 51592), (81, 51586), (85, 51535),

Gene: ImtiyazSitla_61 Start: 52401, Stop: 51892, Start Num: 8

Candidate Starts for ImtiyazSitla_61:

(Start: 3 @52467 has 1 MA's), (Start: 6 @52413 has 22 MA's), (Start: 8 @52401 has 109 MA's), (13, 52374), (Start: 14 @52356 has 4 MA's), (34, 52269), (67, 52083), (68, 52071), (74, 52044), (86, 51921),

Gene: Inverness_58 Start: 52163, Stop: 51597, Start Num: 14

Candidate Starts for Inverness_58:

(Start: 3 @52274 has 1 MA's), (Start: 6 @52220 has 22 MA's), (Start: 8 @52208 has 109 MA's), (13, 52181), (Start: 14 @52163 has 4 MA's), (25, 52109), (34, 52076), (40, 52043), (53, 51953), (67, 51791), (68, 51779), (74, 51752), (75, 51737), (86, 51629),

Gene: Iridoclysis_60 Start: 52492, Stop: 51881, Start Num: 8

Candidate Starts for Iridoclysis_60:

(Start: 3 @52558 has 1 MA's), (Start: 6 @52504 has 22 MA's), (Start: 8 @52492 has 109 MA's), (13, 52465), (Start: 14 @52447 has 4 MA's), (25, 52393), (34, 52360), (40, 52327), (53, 52237), (67, 52075), (68, 52063), (74, 52036), (86, 51913),

Gene: JAMaL_52 Start: 52342, Stop: 51650, Start Num: 7

Candidate Starts for JAMaL_52:

(Start: 7 @52342 has 18 MA's), (11, 52318), (23, 52183), (48, 52030), (54, 52000), (56, 51973), (60, 51955), (64, 51889), (65, 51868), (69, 51817), (70, 51814), (75, 51784), (78, 51772), (80, 51763), (81, 51757), (85, 51706),

Gene: JacAttac_61 Start: 52154, Stop: 51543, Start Num: 8

Candidate Starts for JacAttac_61:

(Start: 3 @52220 has 1 MA's), (Start: 6 @52166 has 22 MA's), (Start: 8 @52154 has 109 MA's), (13, 52127), (Start: 14 @52109 has 4 MA's), (25, 52055), (34, 52022), (40, 51989), (53, 51899), (67, 51737), (68, 51725), (74, 51698), (86, 51575),

Gene: JaguarMi_54 Start: 53280, Stop: 52573, Start Num: 7

Candidate Starts for JaguarMi_54:

(Start: 7 @53280 has 18 MA's), (11, 53256), (23, 53121), (52, 52950), (54, 52938), (58, 52902), (60, 52893), (64, 52812), (69, 52740), (70, 52737), (75, 52707), (78, 52695), (80, 52686), (81, 52680), (85, 52629),

Gene: JakeO_60 Start: 52430, Stop: 51921, Start Num: 8

Candidate Starts for JakeO_60:

(Start: 3 @52496 has 1 MA's), (Start: 6 @52442 has 22 MA's), (Start: 8 @52430 has 109 MA's), (13, 52403), (Start: 14 @52385 has 4 MA's), (34, 52298), (67, 52112), (68, 52100), (74, 52073), (86, 51950),

Gene: JangoPhett_59 Start: 52495, Stop: 51884, Start Num: 8

Candidate Starts for JangoPhett_59:

(Start: 3 @52561 has 1 MA's), (Start: 6 @52507 has 22 MA's), (Start: 8 @52495 has 109 MA's), (13, 52468), (Start: 14 @52450 has 4 MA's), (25, 52396), (34, 52363), (40, 52330), (53, 52240), (67, 52078), (68, 52066), (74, 52039), (86, 51916),

Gene: Jiminy_60 Start: 52266, Stop: 51757, Start Num: 8

Candidate Starts for Jiminy_60:

(Start: 3 @52332 has 1 MA's), (Start: 6 @52278 has 22 MA's), (Start: 8 @52266 has 109 MA's), (13, 52239), (Start: 14 @52221 has 4 MA's), (34, 52134), (67, 51948), (68, 51936), (74, 51909), (86, 51786),

Gene: Jiraiya_63 Start: 52476, Stop: 51955, Start Num: 6

Candidate Starts for Jiraiya_63:

(Start: 3 @52530 has 1 MA's), (Start: 6 @52476 has 22 MA's), (Start: 8 @52464 has 109 MA's), (13, 52437), (Start: 14 @52419 has 4 MA's), (34, 52332), (67, 52146), (68, 52134), (74, 52107), (86, 51984),

Gene: KLucky39_58 Start: 51755, Stop: 51144, Start Num: 8

Candidate Starts for KLucky39_58:

(Start: 3 @51821 has 1 MA's), (Start: 6 @51767 has 22 MA's), (Start: 8 @51755 has 109 MA's), (13, 51728), (Start: 14 @51710 has 4 MA's), (25, 51656), (34, 51623), (40, 51590), (53, 51500), (67, 51338), (68, 51326), (74, 51299), (75, 51284), (86, 51176), (87, 51161),

Gene: Kailash_60 Start: 52781, Stop: 52173, Start Num: 8

Candidate Starts for Kailash_60:

(Start: 3 @52847 has 1 MA's), (Start: 6 @52793 has 22 MA's), (Start: 8 @52781 has 109 MA's), (13, 52754), (Start: 14 @52736 has 4 MA's), (25, 52682), (34, 52649), (40, 52616), (53, 52526), (67, 52364), (68, 52352), (74, 52325), (75, 52310), (86, 52202),

Gene: Kimbrough_60 Start: 52742, Stop: 52131, Start Num: 8

Candidate Starts for Kimbrough_60:

(Start: 3 @52808 has 1 MA's), (Start: 6 @52754 has 22 MA's), (Start: 8 @52742 has 109 MA's), (13, 52715), (Start: 14 @52697 has 4 MA's), (25, 52643), (34, 52610), (40, 52577), (53, 52487), (67, 52325), (68, 52313), (74, 52286), (86, 52163),

Gene: KingVeVeVe_58 Start: 51721, Stop: 51098, Start Num: 6

Candidate Starts for KingVeVeVe_58:

(Start: 3 @51775 has 1 MA's), (Start: 6 @51721 has 22 MA's), (Start: 8 @51709 has 109 MA's), (13, 51682), (Start: 14 @51664 has 4 MA's), (25, 51610), (34, 51577), (40, 51544), (53, 51454), (67, 51292), (68, 51280), (74, 51253), (75, 51238), (86, 51130),

Gene: KlimbOn_59 Start: 52200, Stop: 51589, Start Num: 8

Candidate Starts for KlimbOn_59:

(Start: 3 @52266 has 1 MA's), (Start: 6 @52212 has 22 MA's), (Start: 8 @52200 has 109 MA's), (13, 52173), (Start: 14 @52155 has 4 MA's), (25, 52101), (34, 52068), (40, 52035), (53, 51945), (67, 51783), (68, 51771), (74, 51744), (75, 51729), (86, 51621),

Gene: Kloppinator_60 Start: 52351, Stop: 51743, Start Num: 8

Candidate Starts for Kloppinator_60:

(Start: 3 @52417 has 1 MA's), (Start: 6 @52363 has 22 MA's), (Start: 8 @52351 has 109 MA's), (13, 52324), (Start: 14 @52306 has 4 MA's), (25, 52252), (34, 52219), (40, 52186), (53, 52096), (67, 51934), (68, 51922), (74, 51895), (75, 51880), (86, 51772),

Gene: Kwksand96_60 Start: 52293, Stop: 51772, Start Num: 6

Candidate Starts for Kwksand96_60:

(Start: 3 @52347 has 1 MA's), (Start: 6 @52293 has 22 MA's), (Start: 8 @52281 has 109 MA's), (13, 52254), (Start: 14 @52236 has 4 MA's), (34, 52149), (67, 51963), (68, 51951), (74, 51924), (86, 51801),

Gene: Labeouficaum_60 Start: 52275, Stop: 51766, Start Num: 8

Candidate Starts for Labeouficaum_60:

(Start: 3 @52341 has 1 MA's), (Start: 6 @52287 has 22 MA's), (Start: 8 @52275 has 109 MA's), (13, 52248), (Start: 14 @52230 has 4 MA's), (34, 52143), (67, 51957), (68, 51945), (74, 51918), (86, 51795),

Gene: Lego3393_58 Start: 52733, Stop: 52122, Start Num: 8

Candidate Starts for Lego3393_58:

(Start: 3 @52799 has 1 MA's), (Start: 6 @52745 has 22 MA's), (Start: 8 @52733 has 109 MA's), (13, 52706), (Start: 14 @52688 has 4 MA's), (25, 52634), (34, 52601), (40, 52568), (53, 52478), (67, 52316), (68, 52304), (74, 52277), (86, 52154),

Gene: Legolas_61 Start: 52521, Stop: 52009, Start Num: 8

Candidate Starts for Legolas_61:

(Start: 3 @52587 has 1 MA's), (Start: 6 @52533 has 22 MA's), (Start: 8 @52521 has 109 MA's), (13, 52494), (Start: 14 @52476 has 4 MA's), (31, 52413), (34, 52389), (67, 52203), (68, 52191), (74, 52164), (86, 52041),

Gene: LemonSlice_60 Start: 52112, Stop: 51600, Start Num: 8

Candidate Starts for LemonSlice_60:

(Start: 3 @52178 has 1 MA's), (Start: 6 @52124 has 22 MA's), (Start: 8 @52112 has 109 MA's), (13, 52085), (Start: 14 @52067 has 4 MA's), (31, 52004), (34, 51980), (67, 51794), (68, 51782), (74, 51755), (86, 51632),

Gene: Lolalove_53 Start: 52193, Stop: 51447, Start Num: 7

Candidate Starts for Lolalove_53:

(Start: 7 @52193 has 18 MA's), (11, 52169), (23, 52034), (49, 51821), (54, 51797), (56, 51770), (60, 51752), (64, 51686), (65, 51665), (69, 51614), (70, 51611), (75, 51581), (78, 51569), (80, 51560), (81, 51554), (85, 51503),

Gene: Lopsy_57 Start: 51316, Stop: 50690, Start Num: 6

Candidate Starts for Lopsy_57:

(Start: 6 @51316 has 22 MA's), (13, 51271), (Start: 14 @51253 has 4 MA's), (25, 51199), (34, 51166), (40, 51133), (53, 51043), (67, 50881), (68, 50869), (74, 50842), (75, 50827), (86, 50719),

Gene: LuckyMarjie_57 Start: 51902, Stop: 51291, Start Num: 8

Candidate Starts for LuckyMarjie_57:

(Start: 3 @51968 has 1 MA's), (Start: 6 @51914 has 22 MA's), (Start: 8 @51902 has 109 MA's), (13, 51875), (Start: 14 @51857 has 4 MA's), (25, 51803), (34, 51770), (40, 51737), (53, 51647), (67, 51485), (68, 51473), (74, 51446), (86, 51323),

Gene: Lulumae_57 Start: 51887, Stop: 51276, Start Num: 8

Candidate Starts for Lulumae_57:

(Start: 3 @51953 has 1 MA's), (Start: 6 @51899 has 22 MA's), (Start: 8 @51887 has 109 MA's), (13, 51860), (Start: 14 @51842 has 4 MA's), (25, 51788), (34, 51755), (40, 51722), (53, 51632), (67, 51470), (68, 51458), (74, 51431), (86, 51308),

Gene: Lumine_60 Start: 52371, Stop: 51760, Start Num: 8

Candidate Starts for Lumine_60:

(Start: 3 @52437 has 1 MA's), (Start: 6 @52383 has 22 MA's), (Start: 8 @52371 has 109 MA's), (13, 52344), (Start: 14 @52326 has 4 MA's), (25, 52272), (34, 52239), (40, 52206), (53, 52116), (67, 51954), (68, 51942), (74, 51915), (86, 51792),

Gene: MRabcd_59 Start: 52495, Stop: 51980, Start Num: 8

Candidate Starts for MRabcd_59:

(Start: 3 @52561 has 1 MA's), (Start: 6 @52507 has 22 MA's), (Start: 8 @52495 has 109 MA's), (13, 52468), (Start: 14 @52450 has 4 MA's), (34, 52363), (67, 52171), (68, 52159), (74, 52132), (86, 52009),

Gene: Mag7_60 Start: 52331, Stop: 51723, Start Num: 8

Candidate Starts for Mag7_60:

(Start: 3 @52397 has 1 MA's), (Start: 6 @52343 has 22 MA's), (Start: 8 @52331 has 109 MA's), (13, 52304), (Start: 14 @52286 has 4 MA's), (25, 52232), (34, 52199), (40, 52166), (53, 52076), (67, 51914), (68, 51902), (74, 51875), (75, 51860), (86, 51752),

Gene: Magpie_51 Start: 52088, Stop: 51300, Start Num: 7

Candidate Starts for Magpie_51:

(Start: 7 @52088 has 18 MA's), (11, 52064), (23, 51929), (26, 51890), (29, 51812), (49, 51674), (54, 51650), (56, 51623), (60, 51605), (64, 51539), (65, 51518), (69, 51467), (70, 51464), (75, 51434), (78, 51422), (80, 51413), (85, 51356),

Gene: Maskar_61 Start: 52401, Stop: 51892, Start Num: 8

Candidate Starts for Maskar_61:

(Start: 3 @52467 has 1 MA's), (Start: 6 @52413 has 22 MA's), (Start: 8 @52401 has 109 MA's), (13, 52374), (Start: 14 @52356 has 4 MA's), (34, 52269), (67, 52083), (68, 52071), (74, 52044), (86, 51921),

Gene: Mecca_59 Start: 52730, Stop: 52119, Start Num: 8

Candidate Starts for Mecca_59:

(Start: 3 @52796 has 1 MA's), (Start: 6 @52742 has 22 MA's), (Start: 8 @52730 has 109 MA's), (13, 52703), (Start: 14 @52685 has 4 MA's), (25, 52631), (34, 52598), (40, 52565), (53, 52475), (67, 52313), (68, 52301), (74, 52274), (86, 52151),

Gene: MelsMeow_60 Start: 52454, Stop: 51945, Start Num: 8

Candidate Starts for MelsMeow_60:

(Start: 3 @52520 has 1 MA's), (Start: 6 @52466 has 22 MA's), (Start: 8 @52454 has 109 MA's), (13, 52427), (Start: 14 @52409 has 4 MA's), (34, 52322), (67, 52136), (68, 52124), (74, 52097), (86, 51974),

Gene: Mesh1_61 Start: 52743, Stop: 52129, Start Num: 8

Candidate Starts for Mesh1_61:

(Start: 3 @52809 has 1 MA's), (Start: 6 @52755 has 22 MA's), (Start: 8 @52743 has 109 MA's), (13, 52716), (Start: 14 @52698 has 4 MA's), (25, 52644), (34, 52611), (40, 52578), (53, 52485), (67, 52323), (68, 52311), (74, 52284), (86, 52161),

Gene: MichaelPhcott_60 Start: 52328, Stop: 51720, Start Num: 8

Candidate Starts for MichaelPhcott_60:

(Start: 3 @52394 has 1 MA's), (Start: 6 @52340 has 22 MA's), (Start: 8 @52328 has 109 MA's), (13, 52301), (Start: 14 @52283 has 4 MA's), (25, 52229), (34, 52196), (40, 52163), (53, 52073), (67, 51911), (68, 51899), (74, 51872), (75, 51857), (86, 51749),

Gene: Mikota_58 Start: 51706, Stop: 51095, Start Num: 8

Candidate Starts for Mikota_58:

(Start: 3 @51772 has 1 MA's), (Start: 6 @51718 has 22 MA's), (Start: 8 @51706 has 109 MA's), (13, 51679), (Start: 14 @51661 has 4 MA's), (25, 51607), (34, 51574), (40, 51541), (53, 51451), (67, 51289), (68, 51277), (74, 51250), (75, 51235), (86, 51127),

Gene: MiniBoss_57 Start: 51512, Stop: 50901, Start Num: 8

Candidate Starts for MiniBoss_57:

(Start: 3 @51578 has 1 MA's), (Start: 6 @51524 has 22 MA's), (Start: 8 @51512 has 109 MA's), (13, 51485), (Start: 14 @51467 has 4 MA's), (25, 51413), (34, 51380), (40, 51347), (53, 51257), (67, 51095), (68, 51083), (74, 51056), (86, 50933),

Gene: Mithril_52 Start: 52185, Stop: 51439, Start Num: 7

Candidate Starts for Mithril_52:

(Start: 7 @52185 has 18 MA's), (11, 52161), (23, 52026), (45, 51858), (54, 51789), (56, 51762), (60, 51744), (69, 51606), (70, 51603), (75, 51573), (78, 51561), (80, 51552), (81, 51546), (85, 51495),

Gene: Mudslide_52 Start: 52443, Stop: 51697, Start Num: 7

Candidate Starts for Mudslide_52:

(Start: 7 @52443 has 18 MA's), (11, 52419), (23, 52284), (43, 52122), (49, 52071), (54, 52047), (56, 52020), (60, 52002), (64, 51936), (65, 51915), (69, 51864), (70, 51861), (75, 51831), (78, 51819), (80, 51810), (81, 51804), (85, 51753),

Gene: Mysterious_57 Start: 52741, Stop: 52097, Start Num: 2

Candidate Starts for Mysterious_57:

(Start: 2 @52741 has 5 MA's), (18, 52615), (50, 52447), (57, 52423), (70, 52273), (73, 52258), (77, 52216),

Gene: Nacho_0061 Start: 52937, Stop: 52314, Start Num: 6

Candidate Starts for Nacho_0061:

(Start: 3 @52991 has 1 MA's), (Start: 6 @52937 has 22 MA's), (Start: 8 @52925 has 109 MA's), (13, 52898), (Start: 14 @52880 has 4 MA's), (25, 52826), (34, 52793), (40, 52760), (53, 52670), (67, 52508), (68, 52496), (74, 52469), (75, 52454), (86, 52346), (87, 52331),

Gene: Nanao_51 Start: 51168, Stop: 50476, Start Num: 7

Candidate Starts for Nanao_51:

(Start: 7 @51168 has 18 MA's), (11, 51144), (23, 51009), (49, 50850), (54, 50826), (56, 50799), (60, 50781), (64, 50715), (65, 50694), (69, 50643), (70, 50640), (75, 50610), (78, 50598), (80, 50589), (81, 50583), (85, 50532),

Gene: Nangang_57 Start: 52928, Stop: 52311, Start Num: 9

Candidate Starts for Nangang_57:

(Start: 9 @52928 has 4 MA's), (17, 52817), (19, 52811), (37, 52748), (39, 52739), (57, 52637), (70, 52487), (77, 52430),

Gene: Newman_58 Start: 52203, Stop: 51592, Start Num: 8

Candidate Starts for Newman_58:

(Start: 3 @52269 has 1 MA's), (Start: 6 @52215 has 22 MA's), (Start: 8 @52203 has 109 MA's), (13, 52176), (Start: 14 @52158 has 4 MA's), (25, 52104), (34, 52071), (40, 52038), (53, 51948), (67, 51786), (68, 51774), (74, 51747), (75, 51732), (86, 51624),

Gene: Nicole21_60 Start: 52456, Stop: 51845, Start Num: 8

Candidate Starts for Nicole21_60:

(Start: 3 @52522 has 1 MA's), (Start: 6 @52468 has 22 MA's), (Start: 8 @52456 has 109 MA's), (13, 52429), (Start: 14 @52411 has 4 MA's), (25, 52357), (34, 52324), (40, 52291), (53, 52201), (67, 52039), (68, 52027), (74, 52000), (86, 51877),

Gene: Numberten_59 Start: 52400, Stop: 51789, Start Num: 8

Candidate Starts for Numberten_59:

(Start: 3 @52466 has 1 MA's), (Start: 6 @52412 has 22 MA's), (Start: 8 @52400 has 109 MA's), (13, 52373), (Start: 14 @52355 has 4 MA's), (25, 52301), (34, 52268), (40, 52235), (53, 52145), (67, 51983), (68, 51971), (74, 51944), (75, 51929), (86, 51821), (87, 51806),

Gene: Nyala_58 Start: 52175, Stop: 51564, Start Num: 8

Candidate Starts for Nyala_58:

(Start: 3 @52241 has 1 MA's), (Start: 6 @52187 has 22 MA's), (Start: 8 @52175 has 109 MA's), (13, 52148), (Start: 14 @52130 has 4 MA's), (25, 52076), (34, 52043), (40, 52010), (53, 51920), (67, 51758), (68, 51746), (74, 51719), (75, 51704), (86, 51596),

Gene: Olak_60 Start: 52178, Stop: 51567, Start Num: 8

Candidate Starts for Olak_60:

(Start: 3 @52244 has 1 MA's), (Start: 6 @52190 has 22 MA's), (Start: 8 @52178 has 109 MA's), (13, 52151), (Start: 14 @52133 has 4 MA's), (25, 52079), (34, 52046), (40, 52013), (53, 51923), (67, 51761), (68, 51749), (74, 51722), (75, 51707), (86, 51599),

Gene: Oline_60 Start: 52279, Stop: 51770, Start Num: 8

Candidate Starts for Oline_60:

(Start: 3 @52345 has 1 MA's), (Start: 6 @52291 has 22 MA's), (Start: 8 @52279 has 109 MA's), (13, 52252), (Start: 14 @52234 has 4 MA's), (34, 52147), (67, 51961), (68, 51949), (74, 51922), (86, 51799),

Gene: Olive_59 Start: 52403, Stop: 51780, Start Num: 6

Candidate Starts for Olive_59:

(Start: 3 @52457 has 1 MA's), (Start: 6 @52403 has 22 MA's), (Start: 8 @52391 has 109 MA's), (13, 52364), (Start: 14 @52346 has 4 MA's), (25, 52292), (34, 52259), (40, 52226), (53, 52136), (67, 51974), (68, 51962), (74, 51935), (75, 51920), (86, 51812), (87, 51797),

Gene: OliverWalter_58 Start: 52210, Stop: 51599, Start Num: 8

Candidate Starts for OliverWalter_58:

(Start: 3 @52276 has 1 MA's), (Start: 6 @52222 has 22 MA's), (Start: 8 @52210 has 109 MA's), (13, 52183), (Start: 14 @52165 has 4 MA's), (25, 52111), (34, 52078), (40, 52045), (53, 51955), (67, 51793), (68, 51781), (74, 51754), (75, 51739), (86, 51631),

Gene: Omniscient_60 Start: 53038, Stop: 52427, Start Num: 8

Candidate Starts for Omniscient_60:

(Start: 3 @53104 has 1 MA's), (Start: 6 @53050 has 22 MA's), (Start: 8 @53038 has 109 MA's), (13, 53011), (Start: 14 @52993 has 4 MA's), (25, 52939), (34, 52906), (40, 52873), (53, 52783), (67, 52621), (68, 52609), (74, 52582), (86, 52459),

Gene: Orfeu_58 Start: 52190, Stop: 51561, Start Num: 6

Candidate Starts for Orfeu_58:

(Start: 6 @52190 has 22 MA's), (13, 52145), (Start: 14 @52127 has 4 MA's), (25, 52073), (34, 52040), (40, 52007), (53, 51917), (67, 51755), (68, 51743), (74, 51716), (75, 51701), (86, 51593),

Gene: Pacifista_62 Start: 52174, Stop: 51563, Start Num: 8

Candidate Starts for Pacifista_62:

(Start: 3 @52240 has 1 MA's), (Start: 6 @52186 has 22 MA's), (Start: 8 @52174 has 109 MA's), (13, 52147), (Start: 14 @52129 has 4 MA's), (25, 52075), (34, 52042), (40, 52009), (53, 51919), (67, 51757), (68, 51745), (74, 51718), (86, 51595),

Gene: Phamished_61 Start: 52381, Stop: 51770, Start Num: 8

Candidate Starts for Phamished_61:

(Start: 3 @52447 has 1 MA's), (Start: 6 @52393 has 22 MA's), (Start: 8 @52381 has 109 MA's), (13, 52354), (Start: 14 @52336 has 4 MA's), (34, 52249), (40, 52216), (53, 52126), (67, 51964), (68, 51952), (74, 51925), (75, 51910), (86, 51802), (87, 51787),

Gene: Phareon_58 Start: 51896, Stop: 51285, Start Num: 8

Candidate Starts for Phareon_58:

(Start: 3 @51962 has 1 MA's), (Start: 6 @51908 has 22 MA's), (Start: 8 @51896 has 109 MA's), (13, 51869), (Start: 14 @51851 has 4 MA's), (25, 51797), (34, 51764), (40, 51731), (53, 51641), (67, 51479), (68, 51467), (74, 51440), (86, 51317),

Gene: PhatLouie_61 Start: 52725, Stop: 52102, Start Num: 6

Candidate Starts for PhatLouie_61:

(Start: 3 @52779 has 1 MA's), (Start: 6 @52725 has 22 MA's), (Start: 8 @52713 has 109 MA's), (13, 52686), (Start: 14 @52668 has 4 MA's), (25, 52614), (34, 52581), (40, 52548), (53, 52458), (67, 52296), (68, 52284), (74, 52257), (86, 52134),

Gene: Phelemich_55 Start: 52737, Stop: 52096, Start Num: 2

Candidate Starts for Phelemich_55:

(Start: 2 @52737 has 5 MA's), (18, 52611), (32, 52566), (50, 52443), (51, 52440), (57, 52419), (70, 52272), (72, 52260), (77, 52215),

Gene: PhenghisKhan_60 Start: 52350, Stop: 51829, Start Num: 6

Candidate Starts for PhenghisKhan_60:

(Start: 3 @52404 has 1 MA's), (Start: 6 @52350 has 22 MA's), (Start: 8 @52338 has 109 MA's), (13, 52311), (Start: 14 @52293 has 4 MA's), (34, 52206), (67, 52020), (68, 52008), (74, 51981), (86, 51858),

Gene: Phergie_61 Start: 52330, Stop: 51821, Start Num: 8

Candidate Starts for Phergie_61:

(Start: 3 @52396 has 1 MA's), (Start: 6 @52342 has 22 MA's), (Start: 8 @52330 has 109 MA's), (13, 52303), (Start: 14 @52285 has 4 MA's), (34, 52198), (67, 52012), (68, 52000), (74, 51973), (86, 51850),

Gene: Phleuron_60 Start: 52331, Stop: 51723, Start Num: 8

Candidate Starts for Phleuron_60:

(Start: 3 @52397 has 1 MA's), (Start: 6 @52343 has 22 MA's), (Start: 8 @52331 has 109 MA's), (13, 52304), (Start: 14 @52286 has 4 MA's), (25, 52232), (34, 52199), (40, 52166), (53, 52076), (67, 51914), (68, 51902), (74, 51875), (75, 51860), (86, 51752),

Gene: PhrankReynolds_59 Start: 52335, Stop: 51826, Start Num: 8

Candidate Starts for PhrankReynolds_59:

(Start: 3 @52401 has 1 MA's), (Start: 6 @52347 has 22 MA's), (Start: 8 @52335 has 109 MA's), (13, 52308), (Start: 14 @52290 has 4 MA's), (34, 52203), (67, 52017), (68, 52005), (74, 51978), (86, 51855),

Gene: Phunky_58 Start: 52193, Stop: 51582, Start Num: 8

Candidate Starts for Phunky_58:

(Start: 3 @52259 has 1 MA's), (Start: 6 @52205 has 22 MA's), (Start: 8 @52193 has 109 MA's), (13, 52166), (Start: 14 @52148 has 4 MA's), (25, 52094), (34, 52061), (40, 52028), (53, 51938), (67, 51776), (68, 51764), (74, 51737), (86, 51614),

Gene: Pinkman_59 Start: 52285, Stop: 51764, Start Num: 6

Candidate Starts for Pinkman_59:

(Start: 3 @52339 has 1 MA's), (Start: 6 @52285 has 22 MA's), (Start: 8 @52273 has 109 MA's), (13, 52246), (Start: 14 @52228 has 4 MA's), (34, 52141), (67, 51955), (68, 51943), (74, 51916), (86, 51793),

Gene: Pipsqueak_58 Start: 52135, Stop: 51611, Start Num: 6

Candidate Starts for Pipsqueak_58:

(Start: 3 @52189 has 1 MA's), (Start: 6 @52135 has 22 MA's), (Start: 8 @52123 has 109 MA's), (13, 52096), (Start: 14 @52078 has 4 MA's), (31, 52015), (34, 51991), (67, 51805), (68, 51793), (74, 51766), (86, 51643),

Gene: Plmatters_58 Start: 52197, Stop: 51586, Start Num: 8

Candidate Starts for Plmatters_58:

(Start: 3 @52263 has 1 MA's), (Start: 6 @52209 has 22 MA's), (Start: 8 @52197 has 109 MA's), (13, 52170), (Start: 14 @52152 has 4 MA's), (25, 52098), (34, 52065), (40, 52032), (53, 51942), (67, 51780), (68, 51768), (74, 51741), (86, 51618),

Gene: Podrick_57 Start: 51452, Stop: 50922, Start Num: 6

Candidate Starts for Podrick_57:

(Start: 6 @51452 has 22 MA's), (13, 51407), (Start: 14 @51389 has 4 MA's), (34, 51302), (67, 51116), (68, 51104), (74, 51077), (86, 50954),

Gene: Pops_59 Start: 52382, Stop: 51774, Start Num: 8

Candidate Starts for Pops_59:

(Start: 3 @52448 has 1 MA's), (Start: 6 @52394 has 22 MA's), (Start: 8 @52382 has 109 MA's), (13, 52355), (Start: 14 @52337 has 4 MA's), (25, 52283), (34, 52250), (40, 52217), (53, 52127), (67, 51965), (68, 51953), (74, 51926), (75, 51911), (86, 51803),

Gene: Poster_51 Start: 51169, Stop: 50477, Start Num: 7

Candidate Starts for Poster_51:

(Start: 7 @51169 has 18 MA's), (11, 51145), (23, 51010), (49, 50851), (54, 50827), (56, 50800), (60, 50782), (64, 50716), (65, 50695), (69, 50644), (70, 50641), (75, 50611), (78, 50599), (80, 50590), (81, 50584), (85, 50533),

Gene: Prickles_61 Start: 52688, Stop: 52077, Start Num: 8

Candidate Starts for Prickles_61:

(Start: 3 @52754 has 1 MA's), (Start: 6 @52700 has 22 MA's), (Start: 8 @52688 has 109 MA's), (13, 52661), (Start: 14 @52643 has 4 MA's), (25, 52589), (34, 52556), (40, 52523), (53, 52433), (67, 52271), (68, 52259), (74, 52232), (75, 52217), (86, 52109), (87, 52094),

Gene: Prince_53 Start: 52350, Stop: 51604, Start Num: 7

Candidate Starts for Prince_53:

(Start: 7 @52350 has 18 MA's), (11, 52326), (23, 52191), (43, 52029), (49, 51978), (54, 51954), (56, 51927), (60, 51909), (64, 51843), (65, 51822), (69, 51771), (70, 51768), (75, 51738), (78, 51726), (80, 51717), (81, 51711), (85, 51660),

Gene: ProfessorX_59 Start: 52187, Stop: 51576, Start Num: 8

Candidate Starts for ProfessorX_59:

(Start: 3 @52253 has 1 MA's), (Start: 6 @52199 has 22 MA's), (Start: 8 @52187 has 109 MA's), (13, 52160), (Start: 14 @52142 has 4 MA's), (25, 52088), (34, 52055), (40, 52022), (53, 51932), (67, 51770), (68, 51758), (74, 51731), (86, 51608),

Gene: QueenBeane_59 Start: 52449, Stop: 51883, Start Num: 14

Candidate Starts for QueenBeane_59:

(Start: 3 @52560 has 1 MA's), (Start: 6 @52506 has 22 MA's), (Start: 8 @52494 has 109 MA's), (13, 52467), (Start: 14 @52449 has 4 MA's), (25, 52395), (34, 52362), (40, 52329), (53, 52239), (67, 52077), (68, 52065), (74, 52038), (86, 51915),

Gene: Quesadilla_57 Start: 53051, Stop: 52476, Start Num: 21

Candidate Starts for Quesadilla_57:

(Start: 21 @53051 has 1 MA's), (30, 52973), (62, 52760), (68, 52652), (74, 52625), (76, 52604), (78, 52598), (80, 52589), (83, 52541),

Gene: RawrgerThat_53 Start: 52205, Stop: 51513, Start Num: 7

Candidate Starts for RawrgerThat_53:

(Start: 7 @52205 has 18 MA's), (11, 52181), (23, 52046), (49, 51887), (56, 51836), (60, 51818), (64, 51752), (65, 51731), (69, 51680), (70, 51677), (75, 51647), (78, 51635), (80, 51626), (81, 51620), (85, 51569),

Gene: RedMaple_61 Start: 52930, Stop: 52319, Start Num: 8

Candidate Starts for RedMaple_61:

(Start: 3 @52996 has 1 MA's), (Start: 6 @52942 has 22 MA's), (Start: 8 @52930 has 109 MA's), (13, 52903), (Start: 14 @52885 has 4 MA's), (25, 52831), (34, 52798), (40, 52765), (53, 52675), (67, 52513), (68, 52501), (74, 52474), (75, 52459), (86, 52351),

Gene: Reprobate_56 Start: 52742, Stop: 52101, Start Num: 2

Candidate Starts for Reprobate_56:

(Start: 2 @52742 has 5 MA's), (18, 52616), (32, 52571), (50, 52448), (51, 52445), (57, 52424), (70, 52277), (72, 52265), (77, 52220),

Gene: Ricotta_59 Start: 52187, Stop: 51576, Start Num: 8

Candidate Starts for Ricotta_59:

(Start: 3 @52253 has 1 MA's), (Start: 6 @52199 has 22 MA's), (Start: 8 @52187 has 109 MA's), (13, 52160), (Start: 14 @52142 has 4 MA's), (25, 52088), (34, 52055), (40, 52022), (53, 51932), (67, 51770), (68, 51758), (74, 51731), (86, 51608),

Gene: Riggan_60 Start: 52487, Stop: 51876, Start Num: 8

Candidate Starts for Riggan_60:

(Start: 3 @52553 has 1 MA's), (Start: 6 @52499 has 22 MA's), (Start: 8 @52487 has 109 MA's), (13, 52460), (Start: 14 @52442 has 4 MA's), (25, 52388), (34, 52355), (40, 52322), (53, 52232), (67, 52070), (68, 52058), (74, 52031), (86, 51908),

Gene: Robyn_59 Start: 52289, Stop: 51726, Start Num: 14

Candidate Starts for Robyn_59:

(Start: 3 @52400 has 1 MA's), (Start: 6 @52346 has 22 MA's), (Start: 8 @52334 has 109 MA's), (13, 52307), (Start: 14 @52289 has 4 MA's), (25, 52235), (34, 52202), (40, 52169), (53, 52079), (67, 51917), (68, 51905), (74, 51878), (75, 51863), (86, 51755),

Gene: Roliet_57 Start: 51484, Stop: 50918, Start Num: 14

Candidate Starts for Roliet_57:

(Start: 3 @51595 has 1 MA's), (Start: 6 @51541 has 22 MA's), (Start: 8 @51529 has 109 MA's), (13, 51502), (Start: 14 @51484 has 4 MA's), (25, 51430), (34, 51397), (40, 51364), (53, 51274), (67, 51112), (68, 51100), (74, 51073), (75, 51058), (86, 50950),

Gene: Roscoe_60 Start: 52633, Stop: 52022, Start Num: 8

Candidate Starts for Roscoe_60:

(Start: 3 @52699 has 1 MA's), (Start: 6 @52645 has 22 MA's), (Start: 8 @52633 has 109 MA's), (13, 52606), (Start: 14 @52588 has 4 MA's), (25, 52534), (34, 52501), (40, 52468), (53, 52378), (67, 52216), (68, 52204), (74, 52177), (75, 52162), (86, 52054), (87, 52039),

Gene: Roy17_58 Start: 51887, Stop: 51276, Start Num: 8

Candidate Starts for Roy17_58:

(Start: 3 @51953 has 1 MA's), (Start: 6 @51899 has 22 MA's), (Start: 8 @51887 has 109 MA's), (13, 51860), (Start: 14 @51842 has 4 MA's), (25, 51788), (34, 51755), (40, 51722), (53, 51632), (67, 51470), (68, 51458), (74, 51431), (86, 51308),

Gene: SDcharge11_59 Start: 51701, Stop: 51090, Start Num: 8

Candidate Starts for SDcharge11_59:

(Start: 3 @51767 has 1 MA's), (Start: 6 @51713 has 22 MA's), (Start: 8 @51701 has 109 MA's), (13, 51674), (Start: 14 @51656 has 4 MA's), (25, 51602), (34, 51569), (40, 51536), (53, 51446), (67, 51284), (68, 51272), (74, 51245), (75, 51230), (86, 51122),

Gene: Samaymay_59 Start: 52494, Stop: 51883, Start Num: 8

Candidate Starts for Samaymay_59:

(Start: 3 @52560 has 1 MA's), (Start: 6 @52506 has 22 MA's), (Start: 8 @52494 has 109 MA's), (13, 52467), (Start: 14 @52449 has 4 MA's), (25, 52395), (34, 52362), (40, 52329), (53, 52239), (67, 52077), (68, 52065), (74, 52038), (86, 51915),

Gene: Schadenfreude_59 Start: 52059, Stop: 51451, Start Num: 8

Candidate Starts for Schadenfreude_59:

(Start: 3 @52125 has 1 MA's), (Start: 6 @52071 has 22 MA's), (Start: 8 @52059 has 109 MA's), (13, 52032), (Start: 14 @52014 has 4 MA's), (25, 51960), (34, 51927), (40, 51894), (53, 51804), (67, 51642), (68, 51630), (74, 51603), (75, 51588), (86, 51480),

Gene: Schueller_61 Start: 52428, Stop: 51907, Start Num: 6

Candidate Starts for Schueller_61:

(Start: 3 @52482 has 1 MA's), (Start: 6 @52428 has 22 MA's), (Start: 8 @52416 has 109 MA's), (13, 52389), (Start: 14 @52371 has 4 MA's), (34, 52284), (67, 52098), (68, 52086), (74, 52059), (86, 51936),

Gene: Selr12_61 Start: 52203, Stop: 51592, Start Num: 8

Candidate Starts for Selr12_61:

(Start: 3 @52269 has 1 MA's), (Start: 6 @52215 has 22 MA's), (Start: 8 @52203 has 109 MA's), (13, 52176), (Start: 14 @52158 has 4 MA's), (25, 52104), (34, 52071), (40, 52038), (53, 51948), (67, 51786), (68, 51774), (74, 51747), (75, 51732), (86, 51624),

Gene: Serendipitous_55 Start: 51901, Stop: 51308, Start Num: 2

Candidate Starts for Serendipitous_55:

(Start: 2 @51901 has 5 MA's), (4, 51865), (18, 51808), (32, 51763), (51, 51637), (65, 51532), (66, 51514), (70, 51478), (75, 51448), (85, 51370),

Gene: Sheila_57 Start: 51561, Stop: 50950, Start Num: 8

Candidate Starts for Sheila_57:

(Start: 3 @51627 has 1 MA's), (Start: 6 @51573 has 22 MA's), (Start: 8 @51561 has 109 MA's), (13, 51534), (Start: 14 @51516 has 4 MA's), (25, 51462), (34, 51429), (40, 51396), (53, 51306), (67, 51144), (68, 51132), (74, 51105), (75, 51090), (86, 50982),

Gene: ShiVal_57 Start: 52198, Stop: 51587, Start Num: 8

Candidate Starts for ShiVal_57:

(Start: 3 @52264 has 1 MA's), (Start: 6 @52210 has 22 MA's), (Start: 8 @52198 has 109 MA's), (13, 52171), (Start: 14 @52153 has 4 MA's), (25, 52099), (34, 52066), (40, 52033), (53, 51943), (67, 51781), (68, 51769), (74, 51742), (75, 51727), (86, 51619),

Gene: Sigman_60 Start: 52154, Stop: 51543, Start Num: 8

Candidate Starts for Sigman_60:

(Start: 3 @52220 has 1 MA's), (Start: 6 @52166 has 22 MA's), (Start: 8 @52154 has 109 MA's), (13, 52127), (Start: 14 @52109 has 4 MA's), (25, 52055), (34, 52022), (40, 51989), (53, 51899), (67, 51737), (68, 51725), (74, 51698), (86, 51575),

Gene: Simielle_59 Start: 52158, Stop: 51547, Start Num: 8

Candidate Starts for Simielle_59:

(Start: 3 @52224 has 1 MA's), (Start: 6 @52170 has 22 MA's), (Start: 8 @52158 has 109 MA's), (13, 52131), (Start: 14 @52113 has 4 MA's), (25, 52059), (34, 52026), (40, 51993), (53, 51903), (67, 51741), (68, 51729), (74, 51702), (86, 51579),

Gene: SirJeffery_56 Start: 52558, Stop: 51962, Start Num: 12

Candidate Starts for SirJeffery_56:

(Start: 2 @52672 has 5 MA's), (12, 52558), (57, 52279), (70, 52138), (77, 52081),

Gene: Soto_58 Start: 51734, Stop: 51123, Start Num: 8

Candidate Starts for Soto_58:

(Start: 3 @51800 has 1 MA's), (Start: 6 @51746 has 22 MA's), (Start: 8 @51734 has 109 MA's), (13, 51707), (Start: 14 @51689 has 4 MA's), (25, 51635), (34, 51602), (40, 51569), (53, 51479), (67, 51317), (68, 51305), (74, 51278), (75, 51263), (86, 51155),

Gene: Spartan300_59 Start: 52395, Stop: 51784, Start Num: 8

Candidate Starts for Spartan300_59:

(Start: 3 @52461 has 1 MA's), (Start: 6 @52407 has 22 MA's), (Start: 8 @52395 has 109 MA's), (13, 52368), (Start: 14 @52350 has 4 MA's), (25, 52296), (34, 52263), (40, 52230), (53, 52140), (67, 51978), (68, 51966), (74, 51939), (75, 51924), (86, 51816), (87, 51801),

Gene: Stinger_52 Start: 50893, Stop: 50213, Start Num: 16

Candidate Starts for Stinger_52:

(1, 51100), (15, 50905), (Start: 16 @50893 has 1 MA's), (Start: 21 @50854 has 1 MA's), (28, 50725), (43, 50638), (47, 50614), (54, 50563), (60, 50518), (69, 50380), (70, 50377), (75, 50347), (78, 50335), (80, 50326), (81, 50320), (85, 50269),

Gene: StinkyVeggy_57 Start: 52746, Stop: 52102, Start Num: 9

Candidate Starts for StinkyVeggy_57:

(Start: 9 @52746 has 4 MA's), (18, 52632), (39, 52551), (40, 52548), (44, 52530), (46, 52521), (57, 52425), (70, 52278), (77, 52221),

Gene: Struggle_60 Start: 52264, Stop: 51755, Start Num: 8

Candidate Starts for Struggle_60:

(Start: 3 @52330 has 1 MA's), (Start: 6 @52276 has 22 MA's), (Start: 8 @52264 has 109 MA's), (13, 52237), (Start: 14 @52219 has 4 MA's), (34, 52132), (67, 51946), (68, 51934), (74, 51907), (86, 51784),

Gene: Suigeneris_58 Start: 52838, Stop: 52212, Start Num: 2

Candidate Starts for Suigeneris_58:

(Start: 2 @52838 has 5 MA's), (18, 52721), (42, 52619), (57, 52529), (70, 52388), (77, 52331),

Gene: Swiphy_63 Start: 52725, Stop: 52102, Start Num: 6

Candidate Starts for Swiphy_63:

(Start: 3 @52779 has 1 MA's), (Start: 6 @52725 has 22 MA's), (Start: 8 @52713 has 109 MA's), (13, 52686), (Start: 14 @52668 has 4 MA's), (25, 52614), (34, 52581), (40, 52548), (53, 52458), (67, 52296), (68, 52284), (74, 52257), (86, 52134),

Gene: Thunderbird_60 Start: 52419, Stop: 51910, Start Num: 8

Candidate Starts for Thunderbird_60:

(Start: 3 @52485 has 1 MA's), (Start: 6 @52431 has 22 MA's), (Start: 8 @52419 has 109 MA's), (13, 52392), (Start: 14 @52374 has 4 MA's), (34, 52287), (67, 52101), (68, 52089), (74, 52062), (86, 51939),

Gene: Tomlarah_60 Start: 53022, Stop: 52411, Start Num: 8

Candidate Starts for Tomlarah_60:

(Start: 3 @53088 has 1 MA's), (Start: 6 @53034 has 22 MA's), (Start: 8 @53022 has 109 MA's), (13, 52995), (Start: 14 @52977 has 4 MA's), (25, 52923), (34, 52890), (40, 52857), (53, 52767), (67, 52605), (68, 52593), (74, 52566), (75, 52551), (86, 52443),

Gene: Toni_58 Start: 52091, Stop: 51561, Start Num: 6

Candidate Starts for Toni_58:

(Start: 6 @52091 has 22 MA's), (13, 52046), (Start: 14 @52028 has 4 MA's), (34, 51941), (67, 51755), (68, 51743), (74, 51716), (86, 51593),

Gene: Tooj_58 Start: 51838, Stop: 51227, Start Num: 8

Candidate Starts for Tooj_58:

(Start: 3 @51904 has 1 MA's), (Start: 6 @51850 has 22 MA's), (Start: 8 @51838 has 109 MA's), (13, 51811), (Start: 14 @51793 has 4 MA's), (25, 51739), (34, 51706), (40, 51673), (53, 51583), (67, 51421), (68, 51409), (74, 51382), (75, 51367), (86, 51259), (87, 51244),

Gene: True_58 Start: 52178, Stop: 51567, Start Num: 8

Candidate Starts for True_58:

(Start: 3 @52244 has 1 MA's), (Start: 6 @52190 has 22 MA's), (Start: 8 @52178 has 109 MA's), (13, 52151), (Start: 14 @52133 has 4 MA's), (25, 52079), (34, 52046), (40, 52013), (53, 51923), (67, 51761), (68, 51749), (74, 51722), (86, 51599),

Gene: Trypo_62 Start: 52850, Stop: 52341, Start Num: 8

Candidate Starts for Trypo_62:

(Start: 3 @52916 has 1 MA's), (Start: 6 @52862 has 22 MA's), (Start: 8 @52850 has 109 MA's), (13, 52823), (Start: 14 @52805 has 4 MA's), (34, 52718), (67, 52532), (68, 52520), (74, 52493), (86, 52370),

Gene: TyrionL_60 Start: 52275, Stop: 51766, Start Num: 8

Candidate Starts for TyrionL_60:

(Start: 3 @52341 has 1 MA's), (Start: 6 @52287 has 22 MA's), (Start: 8 @52275 has 109 MA's), (13, 52248), (Start: 14 @52230 has 4 MA's), (34, 52143), (67, 51957), (68, 51945), (74, 51918), (86, 51795),

Gene: Vaishali24_58 Start: 52095, Stop: 51475, Start Num: 6

Candidate Starts for Vaishali24_58:

(Start: 3 @52149 has 1 MA's), (Start: 6 @52095 has 22 MA's), (Start: 8 @52083 has 109 MA's), (13, 52056), (Start: 14 @52038 has 4 MA's), (25, 51984), (34, 51951), (40, 51918), (53, 51828), (67, 51666), (68, 51654), (74, 51627), (75, 51612), (86, 51504),

Gene: Valjean_59 Start: 52405, Stop: 51794, Start Num: 8

Candidate Starts for Valjean_59:

(Start: 3 @52471 has 1 MA's), (Start: 6 @52417 has 22 MA's), (Start: 8 @52405 has 109 MA's), (13, 52378), (Start: 14 @52360 has 4 MA's), (25, 52306), (34, 52273), (40, 52240), (53, 52150), (67, 51988), (68, 51976), (74, 51949), (75, 51934), (86, 51826), (87, 51811),

Gene: Vaticameos_56 Start: 50713, Stop: 50102, Start Num: 8

Candidate Starts for Vaticameos_56:

(Start: 3 @50779 has 1 MA's), (Start: 6 @50725 has 22 MA's), (Start: 8 @50713 has 109 MA's), (13, 50686), (Start: 14 @50668 has 4 MA's), (25, 50614), (34, 50581), (40, 50548), (53, 50458), (67, 50296), (68, 50284), (74, 50257), (75, 50242), (86, 50134),

Gene: Veritas_61 Start: 52543, Stop: 52034, Start Num: 8

Candidate Starts for Veritas_61:

(Start: 3 @52609 has 1 MA's), (Start: 6 @52555 has 22 MA's), (Start: 8 @52543 has 109 MA's), (13, 52516), (Start: 14 @52498 has 4 MA's), (34, 52411), (67, 52225), (68, 52213), (74, 52186), (86, 52063),

Gene: Vincenzo_54 Start: 53132, Stop: 52305, Start Num: 9

Candidate Starts for Vincenzo_54:

(Start: 9 @53132 has 4 MA's), (10, 53126), (20, 52991), (24, 52958), (27, 52850), (33, 52808), (38, 52772), (41, 52757), (55, 52646), (59, 52634), (61, 52604), (63, 52568), (70, 52469), (75, 52439), (78, 52427), (79, 52424), (82, 52397), (84, 52364),

Gene: VioletZ_54 Start: 52269, Stop: 51523, Start Num: 7

Candidate Starts for VioletZ_54:

(Start: 7 @52269 has 18 MA's), (11, 52245), (23, 52110), (45, 51942), (54, 51873), (56, 51846), (60, 51828), (69, 51690), (70, 51687), (75, 51657), (78, 51645), (80, 51636), (81, 51630), (85, 51579),

Gene: Virapocalypse_60 Start: 52504, Stop: 51893, Start Num: 8

Candidate Starts for Virapocalypse_60:

(Start: 3 @52570 has 1 MA's), (Start: 6 @52516 has 22 MA's), (Start: 8 @52504 has 109 MA's), (13, 52477), (Start: 14 @52459 has 4 MA's), (25, 52405), (34, 52372), (40, 52339), (53, 52249), (67, 52087), (68, 52075), (74, 52048), (86, 51925),

Gene: Virgeve_59 Start: 52153, Stop: 51530, Start Num: 6

Candidate Starts for Virgeve_59:

(Start: 3 @52207 has 1 MA's), (Start: 6 @52153 has 22 MA's), (Start: 8 @52141 has 109 MA's), (13, 52114), (Start: 14 @52096 has 4 MA's), (25, 52042), (34, 52009), (40, 51976), (53, 51886), (67, 51724), (68, 51712), (74, 51685), (86, 51562),

Gene: Waleliano_52 Start: 52222, Stop: 51425, Start Num: 7

Candidate Starts for Waleliano_52:

(Start: 7 @52222 has 18 MA's), (11, 52198), (23, 52063), (26, 52012), (29, 51937), (54, 51775), (56, 51748), (60, 51730), (69, 51592), (70, 51589), (75, 51559), (78, 51547), (81, 51532), (85, 51481),

Gene: Wallhey_60 Start: 52279, Stop: 51770, Start Num: 8

Candidate Starts for Wallhey_60:

(Start: 3 @52345 has 1 MA's), (Start: 6 @52291 has 22 MA's), (Start: 8 @52279 has 109 MA's), (13, 52252), (Start: 14 @52234 has 4 MA's), (34, 52147), (67, 51961), (68, 51949), (74, 51922), (86, 51799),

Gene: Windsor_59 Start: 52728, Stop: 52117, Start Num: 8

Candidate Starts for Windsor_59:

(Start: 3 @52794 has 1 MA's), (Start: 6 @52740 has 22 MA's), (Start: 8 @52728 has 109 MA's), (13, 52701), (Start: 14 @52683 has 4 MA's), (25, 52629), (31, 52620), (34, 52596), (40, 52563), (53, 52473), (67, 52311), (68, 52299), (74, 52272), (86, 52149),

Gene: YouGoGlencoco_60 Start: 52474, Stop: 51896, Start Num: 3

Candidate Starts for YouGoGlencoco_60:

(Start: 3 @52474 has 1 MA's), (Start: 6 @52420 has 22 MA's), (Start: 8 @52408 has 109 MA's), (13, 52381), (Start: 14 @52363 has 4 MA's), (31, 52300), (34, 52276), (67, 52090), (68, 52078), (74, 52051), (86, 51928),

Gene: Zaider_60 Start: 52649, Stop: 52038, Start Num: 8

Candidate Starts for Zaider_60:

(Start: 3 @52715 has 1 MA's), (Start: 6 @52661 has 22 MA's), (Start: 8 @52649 has 109 MA's), (13, 52622), (Start: 14 @52604 has 4 MA's), (25, 52550), (34, 52517), (40, 52484), (53, 52394), (67, 52232), (68, 52220), (74, 52193), (75, 52178), (86, 52070), (87, 52055),

Gene: Zemanar_53 Start: 52057, Stop: 51395, Start Num: 7

Candidate Starts for Zemanar_53:

(Start: 7 @52057 has 18 MA's), (23, 51910), (43, 51820), (45, 51814), (64, 51634), (65, 51613), (69, 51562), (70, 51559), (71, 51556), (75, 51529), (78, 51517), (85, 51451),

Gene: Zonia_61 Start: 52730, Stop: 52221, Start Num: 8

Candidate Starts for Zonia_61:

(Start: 3 @52796 has 1 MA's), (Start: 6 @52742 has 22 MA's), (Start: 8 @52730 has 109 MA's), (13, 52703), (Start: 14 @52685 has 4 MA's), (34, 52598), (67, 52412), (68, 52400), (74, 52373), (86, 52250),