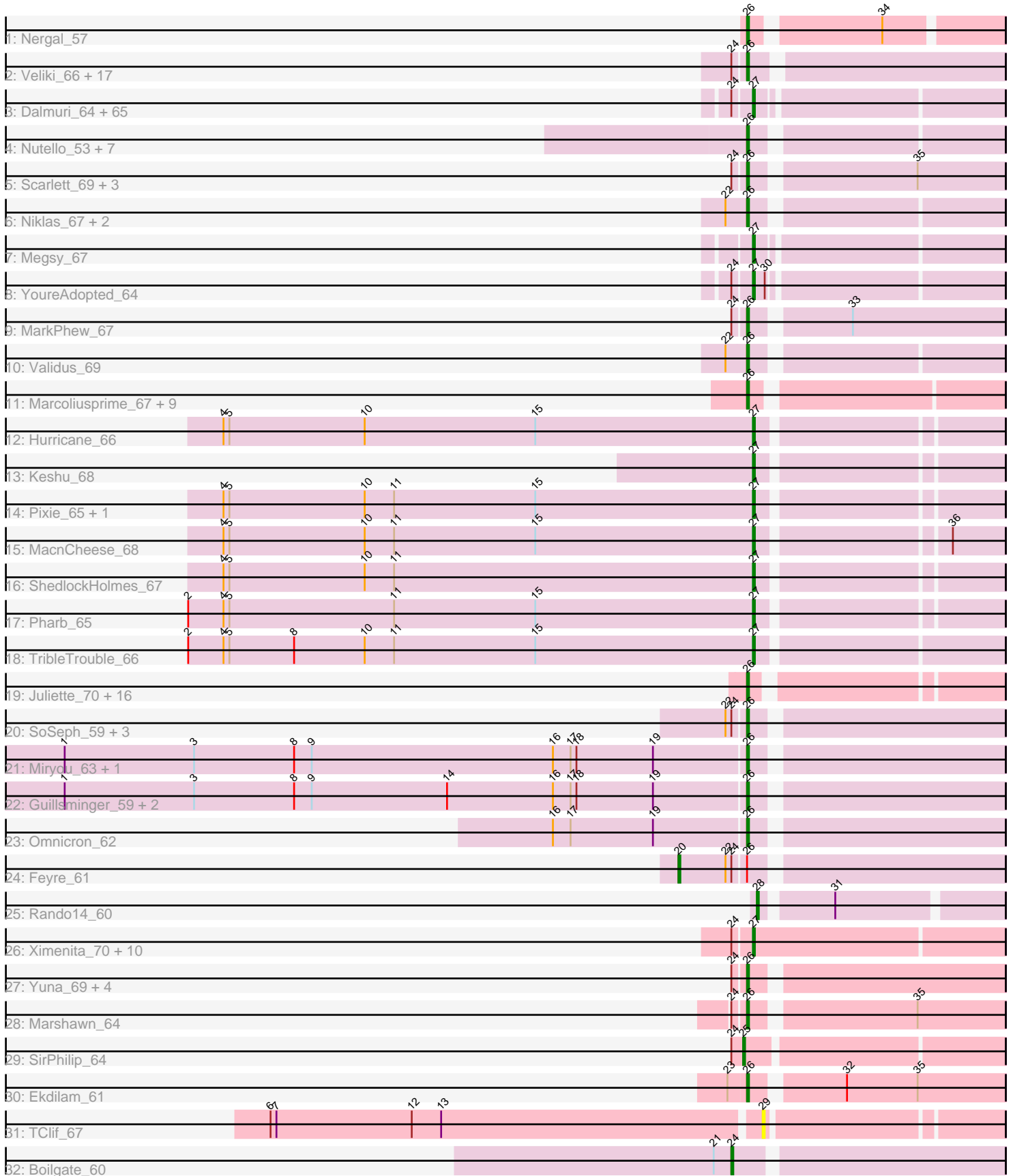


Pham 168017



Note: Tracks are now grouped by subcluster and scaled. Switching in subcluster is indicated by changes in track color. Track scale is now set by default to display the region 30 bp upstream of start 1 to 30 bp downstream of the last possible start. If this default region is judged to be packed too tightly with annotated starts, the track will be further scaled to only show that region of the ORF with annotated starts. This action will be indicated by adding "Zoomed" to the title. For starts, yellow indicates the location of called starts comprised solely of Glimmer/GeneMark auto-annotations, green indicates the location of called starts with at least 1 manual gene annotation.

Pham 168017 Report

This analysis was run 07/09/24 on database version 566.

Pham number 168017 has 172 members, 6 are drafts.

Phages represented in each track:

- Track 1 : Nergal_57
- Track 2 : Veliki_66, Amgine_63, JAWS_65, Padpat_67, Fefferhead_62, Emerson_66, Ellie_60, Efra2_70, Chris_67, LastHope_69, Anaya_67, BaghaKamala_64, CheetoDust_64, Zavala_67, Mynx_66, Yunkel11_69, Guanica15_69, Curiosium_68
- Track 3 : Dalmuri_64, Tachez_64, BGIlluviae_64, LaterM_65, Stinson_66, Ageofdapage_68, Jarvi_64, Twitch_64, TiniBug_65, Prithvi_66, Beezoo_66, Blizzard_64, Devera_72, DrHayes_65, Atiba_65, Hyperbowlee_64, Llorens_64, Asayake_64, Urkel_65, Zabiza_60, BarrelRoll_65, Rapunzel97_66, Homura_64, Pokerus_64, CaseJules_66, Spock_64, TruffulaTree_65, Adonis_64, SamuelLPlaqson_65, Jeckyll_64, Rosmarinus_64, Lunahalos_64, Boiii_64, Apocalypse_67, Durfee_64, Piatt_64, Sulley_64, TaiwanKao_67, Bella96_65, Murucutumbu_66, Joy99_64, CrimD_66, Slimphazie_65, Dole_70, Tiri_65, Peel_64, Belladonna_64, ActinUp_64, Padfoot_64, Topper_64, Angelica_64, Jayhawk_66, ShiaSurprise_65, Inky_64, LindNT_64, TreyKay_66, Ramen_65, Deby_65, Capricorn_64, Illumine_70, MeaningOfLife_65, AlishaPH_64, HedwigODU_64, Geraldini_67, CREW_64, BEEST_64
- Track 4 : Nutello_53, SgtBeansprout_54, Nikao_56, Biglebops_53, LilPharaoh_54, Mdavu_54, Enkosi_55, Amelie_53
- Track 5 : Scarlett_69, KiSi_69, Oscar_68, LeMond_68
- Track 6 : Niklas_67, Shaobing_67, Peanam_67
- Track 7 : Megsy_67
- Track 8 : YoureAdopted_64
- Track 9 : MarkPhew_67
- Track 10 : Validus_69
- Track 11 : Marcoliusprime_67, DismalFunk_67, Mufasa_67, BoostSeason_67, Milly_67, TM4_65, Findley_67, ZoeJ_66, DismalStressor_67, Strobilo_68
- Track 12 : Hurricane_66
- Track 13 : Keshu_68
- Track 14 : Pixie_65, TBond007_62
- Track 15 : MacnCheese_68
- Track 16 : ShedlockHolmes_67
- Track 17 : Pharb_65
- Track 18 : TribbleTrouble_66
- Track 19 : Juliette_70, Slarp_68, Chancellor_68, Eponine_70, Cheetobro_68, Ruthiejr_69, Reptar3000_65, Malthus_69, Taquito_67, MissDaisy_65, Fionnbharth_68, Mitti_68, Patt_64, Wintermute_68, SamScheppers_66,

OmniCritical_67, JF1_68

- Track 20 : SoSeph_59, Heftyboy_59, Waterfoul_60, Thyatira_61
- Track 21 : Miryou_63, Gengar_58
- Track 22 : Guillsminger_59, Leston_58, Paola_58
- Track 23 : Omnicron_62
- Track 24 : Feyre_61
- Track 25 : Rando14_60
- Track 26 : Ximenita_70, Tierra_68, Cain_68, PhelpsODU_66, Shadow1_69, Sunflower1121_70, Phrank_68, Krueger_69, Bryler_68, Syra333_68, Unicorn_66
- Track 27 : Yuna_69, Hammy_64, Nibb_67, Amohnition_64, DarthP_64
- Track 28 : Marshawn_64
- Track 29 : SirPhilip_64
- Track 30 : Ekdilam_61
- Track 31 : TClif_67
- Track 32 : Boilgate_60

Summary of Final Annotations (See graph section above for start numbers):

The start number called the most often in the published annotations is 27, it was called in 83 of the 166 non-draft genes in the pham.

Genes that call this "Most Annotated" start:

- ActinUp_64, Adonis_64, Ageofdapage_68, AlishaPH_64, Angelica_64, Apocalypse_67, Asayake_64, Atiba_65, BEEST_64, BGIlluviae_64, BarrelRoll_65, Beezoo_66, Bella96_65, Belladonna_64, Blizzard_64, Boiiii_64, Bryler_68, CREW_64, Cain_68, Capricorn_64, CaseJules_66, CrimD_66, Dalmuri_64, Deby_65, Devera_72, Dole_70, DrHayes_65, Durfee_64, Geraldini_67, HedwigODU_64, Homura_64, Hurricane_66, Hyperbowlee_64, Illumine_70, Inky_64, Jarvi_64, Jayhawk_66, Jeckyll_64, Joy99_64, Keshu_68, Krueger_69, LaterM_65, LindNT_64, Llorens_64, Lunahalos_64, MacnCheese_68, MeaningOfLife_65, Megsy_67, Murucutumbu_66, Padfoot_64, Peel_64, Pharb_65, PhelpsODU_66, Phrank_68, Piatt_64, Pixie_65, Pokerus_64, Prithvi_66, Ramen_65, Rapunzel97_66, Rosmarinus_64, SamuelLPlaqson_65, Shadow1_69, ShedlockHolmes_67, ShiaSurprise_65, Slimphazie_65, Spock_64, Stinson_66, Sulley_64, Sunflower1121_70, Syra333_68, TBond007_62, Tachez_64, TaiwanKao_67, Tierra_68, TiniBug_65, Tiri_65, Topper_64, TreyKay_66, TripleTrouble_66, TruffulaTree_65, Twitch_64, Unicorn_66, Urkel_65, Ximenita_70, YoureAdopted_64, Zabiza_60,

Genes that have the "Most Annotated" start but do not call it:

-

Genes that do not have the "Most Annotated" start:

- Amelie_53, Amgine_63, Amohnition_64, Anaya_67, BaghaKamala_64, Binglebops_53, Boilgate_60, BoostSeason_67, Chancellor_68, CheetoDust_64, Cheetobro_68, Chris_67, Curiosium_68, DarthP_64, DismalFunk_67, DismalStressor_67, Efra2_70, Ekdilam_61, Ellie_60, Emerson_66, Enkosi_55, Eponine_70, Fefferhead_62, Feyre_61, Findley_67, Fionnbharth_68, Gengar_58, Guanica15_69, Guillsminger_59, Hammy_64, Heftyboy_59, JAWS_65, JF1_68, Juliette_70, KiSi_69, LastHope_69, LeMond_68, Leston_58, LilPharaoh_54,

Malthus_69, Marcoliusprime_67, MarkPhew_67, Marshawn_64, Mdavu_54, Milly_67, Miryou_63, MissDaisy_65, Mitti_68, Mufasa_67, Mynx_66, Nergal_57, Nibb_67, Nikao_56, Niklas_67, Nutello_53, OmniCritical_67, Omnicron_62, Oscar_68, Padpat_67, Paola_58, Patt_64, Peanam_67, Rando14_60, Reptar3000_65, Ruthiejr_69, SamScheppers_66, Scarlett_69, SgtBeansprout_54, Shaobing_67, SirPhilip_64, Slarp_68, SoSeph_59, Strobilo_68, TClif_67, TM4_65, Taquito_67, Thyatira_61, Validus_69, Veliki_66, Waterfoul_60, Wintermute_68, Yuna_69, Yunkel11_69, Zavala_67, ZoeJ_66,

Summary by start number:

Start 20:

- Found in 1 of 172 (0.6%) of genes in pham
- Manual Annotations of this start: 1 of 166
- Called 100.0% of time when present
- Phage (with cluster) where this start called: Feyre_61 (K5),

Start 24:

- Found in 114 of 172 (66.3%) of genes in pham
- Manual Annotations of this start: 1 of 166
- Called 0.9% of time when present
- Phage (with cluster) where this start called: Boilgate_60 (K8),

Start 25:

- Found in 1 of 172 (0.6%) of genes in pham
- Manual Annotations of this start: 1 of 166
- Called 100.0% of time when present
- Phage (with cluster) where this start called: SirPhilip_64 (K6),

Start 26:

- Found in 81 of 172 (47.1%) of genes in pham
- Manual Annotations of this start: 79 of 166
- Called 98.8% of time when present
- Phage (with cluster) where this start called: Amelie_53 (K1), Amgine_63 (K6), Amohnition_64 (K6), Anaya_67 (K1), BaghaKamala_64 (K1), Biglebops_53 (K1), BoostSeason_67 (K2), Chancellor_68 (K4), CheetoDust_64 (K1), Cheetobro_68 (K4), Chris_67 (K1), Curiosium_68 (K1), DARTH_P_64 (K6), DismalFunk_67 (K2), DismalStressor_67 (K2), Efra2_70 (K1), Ekdilam_61 (K6), Ellie_60 (K6), Emerson_66 (K1), Enkosi_55 (K1), Eponine_70 (K4), Fefferhead_62 (K6), Findley_67 (K2), Fionnbharth_68 (K4), Gengar_58 (K5), Guanica15_69 (K1), Guillsminger_59 (K5), Hammy_64 (K6), Heftyboy_59 (K5), JAWS_65 (K1), JF1_68 (K4), Juliette_70 (K4), KiSi_69 (K1), LastHope_69 (K1), LeMond_68 (K1), Leston_58 (K5), LilPharaoh_54 (K1), Malthus_69 (K4), Marcoliusprime_67 (K2), MarkPhew_67 (K1), Marshawn_64 (K6), Mdavu_54 (K1), Milly_67 (K2), Miryou_63 (K5), MissDaisy_65 (K4), Mitti_68 (K4), Mufasa_67 (K2), Mynx_66 (K1), Nergal_57 (AG), Nibb_67 (K1), Nikao_56 (K1), Niklas_67 (K1), Nutello_53 (K1), OmniCritical_67 (K4), Omnicron_62 (K5), Oscar_68 (K1), Padpat_67 (K1), Paola_58 (K5), Patt_64 (K4), Peanam_67 (K1), Reptar3000_65 (K4), Ruthiejr_69 (K4), SamScheppers_66 (K4), Scarlett_69 (K1), SgtBeansprout_54 (K1), Shaobing_67 (K1), Slarp_68 (K4), SoSeph_59 (K5), Strobilo_68 (K2), TM4_65 (K2), Taquito_67 (K4), Thyatira_61 (K5), Validus_69 (K1), Veliki_66 (K1), Waterfoul_60 (K5), Wintermute_68 (K4), Yuna_69 (K6), Yunkel11_69 (K1), Zavala_67 (K1), ZoeJ_66 (K2),

Start 27:

- Found in 87 of 172 (50.6%) of genes in pham
- Manual Annotations of this start: 83 of 166
- Called 100.0% of time when present
- Phage (with cluster) where this start called: ActinUp_64 (K1), Adonis_64 (K1), Ageofdapage_68 (K1), AlishaPH_64 (K1), Angelica_64 (K1), Apocalypse_67 (K1), Asayake_64 (K1), Atiba_65 (K1), BEEST_64 (K1), BGlluviae_64 (K1), BarrelRoll_65 (K1), Beezoo_66 (K1), Bella96_65 (K1), Belladonna_64 (K1), Blizzard_64 (K1), Boiiii_64 (K1), Bryler_68 (K6), CREW_64 (K1), Cain_68 (K6), Capricorn_64 (K1), CaseJules_66 (K1), CrimD_66 (K1), Dalmuri_64 (K1), Deby_65 (K1), Devera_72 (K1), Dole_70 (K1), DrHayes_65 (K1), Durfee_64 (K1), Geraldini_67 (K1), HedwigODU_64 (K1), Homura_64 (K1), Hurricane_66 (K3), Hyperbowlee_64 (K1), Illumine_70 (K1), Inky_64 (K1), Jarvi_64 (K1), Jayhawk_66 (K1), Jeckyll_64 (K1), Joy99_64 (K1), Keshu_68 (K3), Krueger_69 (K6), LaterM_65 (K1), LindNT_64 (K1), Llorens_64 (K1), Lunahalos_64 (K1), MacnCheese_68 (K3), MeaningOfLife_65 (K1), Megsy_67 (K1), Murucutumbu_66 (K1), Padfoot_64 (K1), Peel_64 (K1), Pharb_65 (K3), PhelpsODU_66 (K6), Phrank_68 (K6), Piatt_64 (K1), Pixie_65 (K3), Pokerus_64 (K1), Prithvi_66 (K1), Ramen_65 (K1), Rapunzel97_66 (K1), Rosmarinus_64 (K1), SamuelLPlaqson_65 (K1), Shadow1_69 (K6), ShedlockHolmes_67 (K3), ShiaSurprise_65 (K1), Slimphazie_65 (K1), Spock_64 (K1), Stinson_66 (K1), Sulley_64 (K1), Sunflower1121_70 (K6), Syra333_68 (K6), TBond007_62 (K3), Tachez_64 (K1), TaiwanKao_67 (K1), Tierra_68 (K6), TiniBug_65 (K1), Tiri_65 (K1), Topper_64 (K1), TreyKay_66 (K1), TribbleTrouble_66 (K3), TruffulaTree_65 (K1), Twitch_64 (K1), Unicorn_66 (K6), Urkel_65 (K1), Ximenita_70 (K6), YoureAdopted_64 (K1), Zabiza_60 (K1),

Start 28:

- Found in 1 of 172 (0.6%) of genes in pham
- Manual Annotations of this start: 1 of 166
- Called 100.0% of time when present
- Phage (with cluster) where this start called: Rando14_60 (K5),

Start 29:

- Found in 1 of 172 (0.6%) of genes in pham
- No Manual Annotations of this start.
- Called 100.0% of time when present
- Phage (with cluster) where this start called: TClif_67 (K6),

Summary by clusters:

There are 8 clusters represented in this pham: AG, K3, K2, K1, K6, K5, K4, K8,

Info for manual annotations of cluster AG:

- Start number 26 was manually annotated 1 time for cluster AG.

Info for manual annotations of cluster K1:

- Start number 26 was manually annotated 33 times for cluster K1.
- Start number 27 was manually annotated 64 times for cluster K1.

Info for manual annotations of cluster K2:

- Start number 26 was manually annotated 10 times for cluster K2.

Info for manual annotations of cluster K3:

- Start number 27 was manually annotated 8 times for cluster K3.

Info for manual annotations of cluster K4:

- Start number 26 was manually annotated 17 times for cluster K4.

Info for manual annotations of cluster K5:

- Start number 20 was manually annotated 1 time for cluster K5.
- Start number 26 was manually annotated 9 times for cluster K5.
- Start number 28 was manually annotated 1 time for cluster K5.

Info for manual annotations of cluster K6:

- Start number 25 was manually annotated 1 time for cluster K6.
- Start number 26 was manually annotated 9 times for cluster K6.
- Start number 27 was manually annotated 11 times for cluster K6.

Info for manual annotations of cluster K8:

- Start number 24 was manually annotated 1 time for cluster K8.

Gene Information:

Gene: ActinUp_64 Start: 42655, Stop: 42774, Start Num: 27

Candidate Starts for ActinUp_64:

(Start: 24 @42646 has 1 MA's), (Start: 27 @42655 has 83 MA's),

Gene: Adonis_64 Start: 42927, Stop: 43046, Start Num: 27

Candidate Starts for Adonis_64:

(Start: 24 @42918 has 1 MA's), (Start: 27 @42927 has 83 MA's),

Gene: Ageofdapage_68 Start: 44083, Stop: 44202, Start Num: 27

Candidate Starts for Ageofdapage_68:

(Start: 24 @44074 has 1 MA's), (Start: 27 @44083 has 83 MA's),

Gene: AlishaPH_64 Start: 42953, Stop: 43072, Start Num: 27

Candidate Starts for AlishaPH_64:

(Start: 24 @42944 has 1 MA's), (Start: 27 @42953 has 83 MA's),

Gene: Amelie_53 Start: 40121, Stop: 40240, Start Num: 26

Candidate Starts for Amelie_53:

(Start: 26 @40121 has 79 MA's),

Gene: Amgine_63 Start: 43756, Stop: 43878, Start Num: 26

Candidate Starts for Amgine_63:

(Start: 24 @43750 has 1 MA's), (Start: 26 @43756 has 79 MA's),

Gene: Amohndition_64 Start: 43291, Stop: 43416, Start Num: 26

Candidate Starts for Amohndition_64:

(Start: 24 @43285 has 1 MA's), (Start: 26 @43291 has 79 MA's),

Gene: Anaya_67 Start: 43635, Stop: 43757, Start Num: 26

Candidate Starts for Anaya_67:

(Start: 24 @43629 has 1 MA's), (Start: 26 @43635 has 79 MA's),

Gene: Angelica_64 Start: 42844, Stop: 42963, Start Num: 27
Candidate Starts for Angelica_64:
(Start: 24 @42835 has 1 MA's), (Start: 27 @42844 has 83 MA's),

Gene: Apocalypse_67 Start: 43610, Stop: 43729, Start Num: 27
Candidate Starts for Apocalypse_67:
(Start: 24 @43601 has 1 MA's), (Start: 27 @43610 has 83 MA's),

Gene: Asayake_64 Start: 43007, Stop: 43126, Start Num: 27
Candidate Starts for Asayake_64:
(Start: 24 @42998 has 1 MA's), (Start: 27 @43007 has 83 MA's),

Gene: Atiba_65 Start: 42655, Stop: 42774, Start Num: 27
Candidate Starts for Atiba_65:
(Start: 24 @42646 has 1 MA's), (Start: 27 @42655 has 83 MA's),

Gene: BEEST_64 Start: 43007, Stop: 43126, Start Num: 27
Candidate Starts for BEEST_64:
(Start: 24 @42998 has 1 MA's), (Start: 27 @43007 has 83 MA's),

Gene: BGlluviae_64 Start: 42810, Stop: 42929, Start Num: 27
Candidate Starts for BGlluviae_64:
(Start: 24 @42801 has 1 MA's), (Start: 27 @42810 has 83 MA's),

Gene: BaghaKamala_64 Start: 42468, Stop: 42593, Start Num: 26
Candidate Starts for BaghaKamala_64:
(Start: 24 @42462 has 1 MA's), (Start: 26 @42468 has 79 MA's),

Gene: BarrelRoll_65 Start: 43092, Stop: 43211, Start Num: 27
Candidate Starts for BarrelRoll_65:
(Start: 24 @43083 has 1 MA's), (Start: 27 @43092 has 83 MA's),

Gene: Beezoo_66 Start: 43604, Stop: 43723, Start Num: 27
Candidate Starts for Beezoo_66:
(Start: 24 @43595 has 1 MA's), (Start: 27 @43604 has 83 MA's),

Gene: Bella96_65 Start: 43388, Stop: 43507, Start Num: 27
Candidate Starts for Bella96_65:
(Start: 24 @43379 has 1 MA's), (Start: 27 @43388 has 83 MA's),

Gene: Belladonna_64 Start: 42810, Stop: 42929, Start Num: 27
Candidate Starts for Belladonna_64:
(Start: 24 @42801 has 1 MA's), (Start: 27 @42810 has 83 MA's),

Gene: Binglebops_53 Start: 40121, Stop: 40240, Start Num: 26
Candidate Starts for Binglebops_53:
(Start: 26 @40121 has 79 MA's),

Gene: Blizzard_64 Start: 43007, Stop: 43126, Start Num: 27
Candidate Starts for Blizzard_64:
(Start: 24 @42998 has 1 MA's), (Start: 27 @43007 has 83 MA's),

Gene: Boiiii_64 Start: 43009, Stop: 43128, Start Num: 27
Candidate Starts for Boiiii_64:
(Start: 24 @43000 has 1 MA's), (Start: 27 @43009 has 83 MA's),

Gene: Boilgate_60 Start: 43391, Stop: 43522, Start Num: 24
Candidate Starts for Boilgate_60:
(21, 43382), (Start: 24 @43391 has 1 MA's),

Gene: BoostSeason_67 Start: 44874, Stop: 44993, Start Num: 26
Candidate Starts for BoostSeason_67:
(Start: 26 @44874 has 79 MA's),

Gene: Bryler_68 Start: 42635, Stop: 42760, Start Num: 27
Candidate Starts for Bryler_68:
(Start: 24 @42626 has 1 MA's), (Start: 27 @42635 has 83 MA's),

Gene: CREW_64 Start: 42810, Stop: 42929, Start Num: 27
Candidate Starts for CREW_64:
(Start: 24 @42801 has 1 MA's), (Start: 27 @42810 has 83 MA's),

Gene: Cain_68 Start: 42623, Stop: 42748, Start Num: 27
Candidate Starts for Cain_68:
(Start: 24 @42614 has 1 MA's), (Start: 27 @42623 has 83 MA's),

Gene: Capricorn_64 Start: 42810, Stop: 42929, Start Num: 27
Candidate Starts for Capricorn_64:
(Start: 24 @42801 has 1 MA's), (Start: 27 @42810 has 83 MA's),

Gene: CaseJules_66 Start: 43007, Stop: 43126, Start Num: 27
Candidate Starts for CaseJules_66:
(Start: 24 @42998 has 1 MA's), (Start: 27 @43007 has 83 MA's),

Gene: Chancellor_68 Start: 42414, Stop: 42530, Start Num: 26
Candidate Starts for Chancellor_68:
(Start: 26 @42414 has 79 MA's),

Gene: CheetoDust_64 Start: 42515, Stop: 42640, Start Num: 26
Candidate Starts for CheetoDust_64:
(Start: 24 @42509 has 1 MA's), (Start: 26 @42515 has 79 MA's),

Gene: Cheetobro_68 Start: 42411, Stop: 42527, Start Num: 26
Candidate Starts for Cheetobro_68:
(Start: 26 @42411 has 79 MA's),

Gene: Chris_67 Start: 43864, Stop: 43986, Start Num: 26
Candidate Starts for Chris_67:
(Start: 24 @43858 has 1 MA's), (Start: 26 @43864 has 79 MA's),

Gene: CrimD_66 Start: 43631, Stop: 43750, Start Num: 27
Candidate Starts for CrimD_66:
(Start: 24 @43622 has 1 MA's), (Start: 27 @43631 has 83 MA's),

Gene: Curiosium_68 Start: 42320, Stop: 42442, Start Num: 26

Candidate Starts for Curiosium_68:

(Start: 24 @42314 has 1 MA's), (Start: 26 @42320 has 79 MA's),

Gene: Dalmuri_64 Start: 42810, Stop: 42929, Start Num: 27

Candidate Starts for Dalmuri_64:

(Start: 24 @42801 has 1 MA's), (Start: 27 @42810 has 83 MA's),

Gene: DarthP_64 Start: 43145, Stop: 43270, Start Num: 26

Candidate Starts for DarthP_64:

(Start: 24 @43139 has 1 MA's), (Start: 26 @43145 has 79 MA's),

Gene: Deby_65 Start: 43293, Stop: 43412, Start Num: 27

Candidate Starts for Deby_65:

(Start: 24 @43284 has 1 MA's), (Start: 27 @43293 has 83 MA's),

Gene: Devera_72 Start: 44646, Stop: 44765, Start Num: 27

Candidate Starts for Devera_72:

(Start: 24 @44637 has 1 MA's), (Start: 27 @44646 has 83 MA's),

Gene: DismalFunk_67 Start: 45299, Stop: 45418, Start Num: 26

Candidate Starts for DismalFunk_67:

(Start: 26 @45299 has 79 MA's),

Gene: DismalStressor_67 Start: 45299, Stop: 45418, Start Num: 26

Candidate Starts for DismalStressor_67:

(Start: 26 @45299 has 79 MA's),

Gene: Dole_70 Start: 44649, Stop: 44768, Start Num: 27

Candidate Starts for Dole_70:

(Start: 24 @44640 has 1 MA's), (Start: 27 @44649 has 83 MA's),

Gene: DrHayes_65 Start: 43543, Stop: 43662, Start Num: 27

Candidate Starts for DrHayes_65:

(Start: 24 @43534 has 1 MA's), (Start: 27 @43543 has 83 MA's),

Gene: Durfee_64 Start: 43007, Stop: 43126, Start Num: 27

Candidate Starts for Durfee_64:

(Start: 24 @42998 has 1 MA's), (Start: 27 @43007 has 83 MA's),

Gene: Efra2_70 Start: 43373, Stop: 43498, Start Num: 26

Candidate Starts for Efra2_70:

(Start: 24 @43367 has 1 MA's), (Start: 26 @43373 has 79 MA's),

Gene: Ekdilam_61 Start: 43378, Stop: 43500, Start Num: 26

Candidate Starts for Ekdilam_61:

(23, 43369), (Start: 26 @43378 has 79 MA's), (32, 43420), (35, 43456),

Gene: Ellie_60 Start: 42616, Stop: 42738, Start Num: 26

Candidate Starts for Ellie_60:

(Start: 24 @42610 has 1 MA's), (Start: 26 @42616 has 79 MA's),

Gene: Emerson_66 Start: 43124, Stop: 43246, Start Num: 26

Candidate Starts for Emerson_66:

(Start: 24 @43118 has 1 MA's), (Start: 26 @43124 has 79 MA's),

Gene: Enkosi_55 Start: 42734, Stop: 42853, Start Num: 26

Candidate Starts for Enkosi_55:

(Start: 26 @42734 has 79 MA's),

Gene: Eponine_70 Start: 43257, Stop: 43373, Start Num: 26

Candidate Starts for Eponine_70:

(Start: 26 @43257 has 79 MA's),

Gene: Fefferhead_62 Start: 42525, Stop: 42647, Start Num: 26

Candidate Starts for Fefferhead_62:

(Start: 24 @42519 has 1 MA's), (Start: 26 @42525 has 79 MA's),

Gene: Feyre_61 Start: 43526, Stop: 43681, Start Num: 20

Candidate Starts for Feyre_61:

(Start: 20 @43526 has 1 MA's), (22, 43550), (Start: 24 @43553 has 1 MA's), (Start: 26 @43559 has 79 MA's),

Gene: Findley_67 Start: 45292, Stop: 45411, Start Num: 26

Candidate Starts for Findley_67:

(Start: 26 @45292 has 79 MA's),

Gene: Fionnbharth_68 Start: 42655, Stop: 42771, Start Num: 26

Candidate Starts for Fionnbharth_68:

(Start: 26 @42655 has 79 MA's),

Gene: Gengar_58 Start: 41577, Stop: 41699, Start Num: 26

Candidate Starts for Gengar_58:

(1, 41232), (3, 41298), (8, 41349), (9, 41358), (16, 41481), (17, 41490), (18, 41493), (19, 41532),

(Start: 26 @41577 has 79 MA's),

Gene: Geraldini_67 Start: 43689, Stop: 43808, Start Num: 27

Candidate Starts for Geraldini_67:

(Start: 24 @43680 has 1 MA's), (Start: 27 @43689 has 83 MA's),

Gene: Guanica15_69 Start: 43114, Stop: 43239, Start Num: 26

Candidate Starts for Guanica15_69:

(Start: 24 @43108 has 1 MA's), (Start: 26 @43114 has 79 MA's),

Gene: Guillsminger_59 Start: 41548, Stop: 41670, Start Num: 26

Candidate Starts for Guillsminger_59:

(1, 41203), (3, 41269), (8, 41320), (9, 41329), (14, 41398), (16, 41452), (17, 41461), (18, 41464), (19, 41503), (Start: 26 @41548 has 79 MA's),

Gene: Hammy_64 Start: 43133, Stop: 43258, Start Num: 26

Candidate Starts for Hammy_64:

(Start: 24 @43127 has 1 MA's), (Start: 26 @43133 has 79 MA's),

Gene: HedwigODU_64 Start: 42655, Stop: 42774, Start Num: 27

Candidate Starts for HedwigODU_64:

(Start: 24 @42646 has 1 MA's), (Start: 27 @42655 has 83 MA's),

Gene: Heftyboy_59 Start: 41921, Stop: 42043, Start Num: 26
Candidate Starts for Heftyboy_59:
(22, 41912), (Start: 24 @41915 has 1 MA's), (Start: 26 @41921 has 79 MA's),

Gene: Homura_64 Start: 42810, Stop: 42929, Start Num: 27
Candidate Starts for Homura_64:
(Start: 24 @42801 has 1 MA's), (Start: 27 @42810 has 83 MA's),

Gene: Hurricane_66 Start: 43292, Stop: 43408, Start Num: 27
Candidate Starts for Hurricane_66:
(4, 43022), (5, 43025), (10, 43094), (15, 43181), (Start: 27 @43292 has 83 MA's),

Gene: Hyperbowlee_64 Start: 43007, Stop: 43126, Start Num: 27
Candidate Starts for Hyperbowlee_64:
(Start: 24 @42998 has 1 MA's), (Start: 27 @43007 has 83 MA's),

Gene: Illumine_70 Start: 44648, Stop: 44767, Start Num: 27
Candidate Starts for Illumine_70:
(Start: 24 @44639 has 1 MA's), (Start: 27 @44648 has 83 MA's),

Gene: Inky_64 Start: 42810, Stop: 42929, Start Num: 27
Candidate Starts for Inky_64:
(Start: 24 @42801 has 1 MA's), (Start: 27 @42810 has 83 MA's),

Gene: JAWS_65 Start: 43083, Stop: 43205, Start Num: 26
Candidate Starts for JAWS_65:
(Start: 24 @43077 has 1 MA's), (Start: 26 @43083 has 79 MA's),

Gene: JF1_68 Start: 42572, Stop: 42688, Start Num: 26
Candidate Starts for JF1_68:
(Start: 26 @42572 has 79 MA's),

Gene: Jarvi_64 Start: 42810, Stop: 42929, Start Num: 27
Candidate Starts for Jarvi_64:
(Start: 24 @42801 has 1 MA's), (Start: 27 @42810 has 83 MA's),

Gene: Jayhawk_66 Start: 43152, Stop: 43271, Start Num: 27
Candidate Starts for Jayhawk_66:
(Start: 24 @43143 has 1 MA's), (Start: 27 @43152 has 83 MA's),

Gene: Jeckyll_64 Start: 42810, Stop: 42929, Start Num: 27
Candidate Starts for Jeckyll_64:
(Start: 24 @42801 has 1 MA's), (Start: 27 @42810 has 83 MA's),

Gene: Joy99_64 Start: 42739, Stop: 42858, Start Num: 27
Candidate Starts for Joy99_64:
(Start: 24 @42730 has 1 MA's), (Start: 27 @42739 has 83 MA's),

Gene: Juliette_70 Start: 42719, Stop: 42835, Start Num: 26
Candidate Starts for Juliette_70:
(Start: 26 @42719 has 79 MA's),

Gene: Keshu_68 Start: 43390, Stop: 43506, Start Num: 27

Candidate Starts for Keshu_68:
(Start: 27 @43390 has 83 MA's),

Gene: KiSi_69 Start: 43845, Stop: 43967, Start Num: 26
Candidate Starts for KiSi_69:
(Start: 24 @43839 has 1 MA's), (Start: 26 @43845 has 79 MA's), (35, 43923),

Gene: Krueger_69 Start: 42911, Stop: 43036, Start Num: 27
Candidate Starts for Krueger_69:
(Start: 24 @42902 has 1 MA's), (Start: 27 @42911 has 83 MA's),

Gene: LastHope_69 Start: 42234, Stop: 42359, Start Num: 26
Candidate Starts for LastHope_69:
(Start: 24 @42228 has 1 MA's), (Start: 26 @42234 has 79 MA's),

Gene: LaterM_65 Start: 43502, Stop: 43621, Start Num: 27
Candidate Starts for LaterM_65:
(Start: 24 @43493 has 1 MA's), (Start: 27 @43502 has 83 MA's),

Gene: LeMond_68 Start: 43479, Stop: 43601, Start Num: 26
Candidate Starts for LeMond_68:
(Start: 24 @43473 has 1 MA's), (Start: 26 @43479 has 79 MA's), (35, 43557),

Gene: Leston_58 Start: 41677, Stop: 41799, Start Num: 26
Candidate Starts for Leston_58:
(1, 41332), (3, 41398), (8, 41449), (9, 41458), (14, 41527), (16, 41581), (17, 41590), (18, 41593), (19, 41632), (Start: 26 @41677 has 79 MA's),

Gene: LilPharaoh_54 Start: 39849, Stop: 39968, Start Num: 26
Candidate Starts for LilPharaoh_54:
(Start: 26 @39849 has 79 MA's),

Gene: LindNT_64 Start: 43297, Stop: 43416, Start Num: 27
Candidate Starts for LindNT_64:
(Start: 24 @43288 has 1 MA's), (Start: 27 @43297 has 83 MA's),

Gene: Llorens_64 Start: 42810, Stop: 42929, Start Num: 27
Candidate Starts for Llorens_64:
(Start: 24 @42801 has 1 MA's), (Start: 27 @42810 has 83 MA's),

Gene: Lunahalos_64 Start: 42810, Stop: 42929, Start Num: 27
Candidate Starts for Lunahalos_64:
(Start: 24 @42801 has 1 MA's), (Start: 27 @42810 has 83 MA's),

Gene: MacnCheese_68 Start: 43909, Stop: 44025, Start Num: 27
Candidate Starts for MacnCheese_68:
(4, 43639), (5, 43642), (10, 43711), (11, 43726), (15, 43798), (Start: 27 @43909 has 83 MA's), (36, 43999),

Gene: Malthus_69 Start: 42407, Stop: 42523, Start Num: 26
Candidate Starts for Malthus_69:
(Start: 26 @42407 has 79 MA's),

Gene: Marcoliusprime_67 Start: 45299, Stop: 45418, Start Num: 26
Candidate Starts for Marcoliusprime_67:
(Start: 26 @45299 has 79 MA's),

Gene: MarkPhew_67 Start: 42979, Stop: 43101, Start Num: 26
Candidate Starts for MarkPhew_67:
(Start: 24 @42973 has 1 MA's), (Start: 26 @42979 has 79 MA's), (33, 43024),

Gene: Marshawn_64 Start: 43329, Stop: 43451, Start Num: 26
Candidate Starts for Marshawn_64:
(Start: 24 @43323 has 1 MA's), (Start: 26 @43329 has 79 MA's), (35, 43407),

Gene: Mdavu_54 Start: 40110, Stop: 40229, Start Num: 26
Candidate Starts for Mdavu_54:
(Start: 26 @40110 has 79 MA's),

Gene: MeaningOfLife_65 Start: 43562, Stop: 43681, Start Num: 27
Candidate Starts for MeaningOfLife_65:
(Start: 24 @43553 has 1 MA's), (Start: 27 @43562 has 83 MA's),

Gene: Megsy_67 Start: 43218, Stop: 43337, Start Num: 27
Candidate Starts for Megsy_67:
(Start: 27 @43218 has 83 MA's),

Gene: Milly_67 Start: 45272, Stop: 45391, Start Num: 26
Candidate Starts for Milly_67:
(Start: 26 @45272 has 79 MA's),

Gene: Miryou_63 Start: 44274, Stop: 44396, Start Num: 26
Candidate Starts for Miryou_63:
(1, 43929), (3, 43995), (8, 44046), (9, 44055), (16, 44178), (17, 44187), (18, 44190), (19, 44229),
(Start: 26 @44274 has 79 MA's),

Gene: MissDaisy_65 Start: 41319, Stop: 41435, Start Num: 26
Candidate Starts for MissDaisy_65:
(Start: 26 @41319 has 79 MA's),

Gene: Mitti_68 Start: 42586, Stop: 42702, Start Num: 26
Candidate Starts for Mitti_68:
(Start: 26 @42586 has 79 MA's),

Gene: Mufasa_67 Start: 44859, Stop: 44978, Start Num: 26
Candidate Starts for Mufasa_67:
(Start: 26 @44859 has 79 MA's),

Gene: Murucutumbu_66 Start: 44077, Stop: 44196, Start Num: 27
Candidate Starts for Murucutumbu_66:
(Start: 24 @44068 has 1 MA's), (Start: 27 @44077 has 83 MA's),

Gene: Mynx_66 Start: 43419, Stop: 43541, Start Num: 26
Candidate Starts for Mynx_66:
(Start: 24 @43413 has 1 MA's), (Start: 26 @43419 has 79 MA's),

Gene: Nergal_57 Start: 39643, Stop: 39759, Start Num: 26
Candidate Starts for Nergal_57:
(Start: 26 @39643 has 79 MA's), (34, 39703),

Gene: Nibb_67 Start: 43190, Stop: 43312, Start Num: 26
Candidate Starts for Nibb_67:
(Start: 24 @43184 has 1 MA's), (Start: 26 @43190 has 79 MA's),

Gene: Nikao_56 Start: 42734, Stop: 42853, Start Num: 26
Candidate Starts for Nikao_56:
(Start: 26 @42734 has 79 MA's),

Gene: Niklas_67 Start: 43354, Stop: 43473, Start Num: 26
Candidate Starts for Niklas_67:
(22, 43345), (Start: 26 @43354 has 79 MA's),

Gene: Nutello_53 Start: 40121, Stop: 40240, Start Num: 26
Candidate Starts for Nutello_53:
(Start: 26 @40121 has 79 MA's),

Gene: OmniCritical_67 Start: 42434, Stop: 42550, Start Num: 26
Candidate Starts for OmniCritical_67:
(Start: 26 @42434 has 79 MA's),

Gene: Omnicron_62 Start: 42057, Stop: 42179, Start Num: 26
Candidate Starts for Omnicron_62:
(16, 41961), (17, 41970), (19, 42012), (Start: 26 @42057 has 79 MA's),

Gene: Oscar_68 Start: 43396, Stop: 43518, Start Num: 26
Candidate Starts for Oscar_68:
(Start: 24 @43390 has 1 MA's), (Start: 26 @43396 has 79 MA's), (35, 43474),

Gene: Padfoot_64 Start: 43007, Stop: 43126, Start Num: 27
Candidate Starts for Padfoot_64:
(Start: 24 @42998 has 1 MA's), (Start: 27 @43007 has 83 MA's),

Gene: Padpat_67 Start: 43124, Stop: 43246, Start Num: 26
Candidate Starts for Padpat_67:
(Start: 24 @43118 has 1 MA's), (Start: 26 @43124 has 79 MA's),

Gene: Paola_58 Start: 41548, Stop: 41670, Start Num: 26
Candidate Starts for Paola_58:
(1, 41203), (3, 41269), (8, 41320), (9, 41329), (14, 41398), (16, 41452), (17, 41461), (18, 41464), (19, 41503), (Start: 26 @41548 has 79 MA's),

Gene: Patt_64 Start: 41043, Stop: 41159, Start Num: 26
Candidate Starts for Patt_64:
(Start: 26 @41043 has 79 MA's),

Gene: Peanam_67 Start: 43312, Stop: 43431, Start Num: 26
Candidate Starts for Peanam_67:
(22, 43303), (Start: 26 @43312 has 79 MA's),

Gene: Peel_64 Start: 42812, Stop: 42931, Start Num: 27
Candidate Starts for Peel_64:
(Start: 24 @42803 has 1 MA's), (Start: 27 @42812 has 83 MA's),

Gene: Pharb_65 Start: 42639, Stop: 42755, Start Num: 27
Candidate Starts for Pharb_65:
(2, 42351), (4, 42369), (5, 42372), (11, 42456), (15, 42528), (Start: 27 @42639 has 83 MA's),

Gene: PhelpsODU_66 Start: 42549, Stop: 42674, Start Num: 27
Candidate Starts for PhelpsODU_66:
(Start: 24 @42540 has 1 MA's), (Start: 27 @42549 has 83 MA's),

Gene: Phrank_68 Start: 42613, Stop: 42738, Start Num: 27
Candidate Starts for Phrank_68:
(Start: 24 @42604 has 1 MA's), (Start: 27 @42613 has 83 MA's),

Gene: Piatt_64 Start: 43007, Stop: 43126, Start Num: 27
Candidate Starts for Piatt_64:
(Start: 24 @42998 has 1 MA's), (Start: 27 @43007 has 83 MA's),

Gene: Pixie_65 Start: 42812, Stop: 42928, Start Num: 27
Candidate Starts for Pixie_65:
(4, 42542), (5, 42545), (10, 42614), (11, 42629), (15, 42701), (Start: 27 @42812 has 83 MA's),

Gene: Pokerus_64 Start: 43152, Stop: 43271, Start Num: 27
Candidate Starts for Pokerus_64:
(Start: 24 @43143 has 1 MA's), (Start: 27 @43152 has 83 MA's),

Gene: Prithvi_66 Start: 43297, Stop: 43416, Start Num: 27
Candidate Starts for Prithvi_66:
(Start: 24 @43288 has 1 MA's), (Start: 27 @43297 has 83 MA's),

Gene: Ramen_65 Start: 42657, Stop: 42776, Start Num: 27
Candidate Starts for Ramen_65:
(Start: 24 @42648 has 1 MA's), (Start: 27 @42657 has 83 MA's),

Gene: Rando14_60 Start: 39783, Stop: 39896, Start Num: 28
Candidate Starts for Rando14_60:
(Start: 28 @39783 has 1 MA's), (31, 39816),

Gene: Rapunzel97_66 Start: 43107, Stop: 43226, Start Num: 27
Candidate Starts for Rapunzel97_66:
(Start: 24 @43098 has 1 MA's), (Start: 27 @43107 has 83 MA's),

Gene: Reptar3000_65 Start: 41031, Stop: 41147, Start Num: 26
Candidate Starts for Reptar3000_65:
(Start: 26 @41031 has 79 MA's),

Gene: Rosmarinus_64 Start: 42798, Stop: 42917, Start Num: 27
Candidate Starts for Rosmarinus_64:
(Start: 24 @42789 has 1 MA's), (Start: 27 @42798 has 83 MA's),

Gene: Ruthiejr_69 Start: 42457, Stop: 42573, Start Num: 26

Candidate Starts for Ruthiejr_69:
(Start: 26 @42457 has 79 MA's),

Gene: SamScheppers_66 Start: 42886, Stop: 43002, Start Num: 26
Candidate Starts for SamScheppers_66:
(Start: 26 @42886 has 79 MA's),

Gene: SamuelLPlaqson_65 Start: 43543, Stop: 43662, Start Num: 27
Candidate Starts for SamuelLPlaqson_65:
(Start: 24 @43534 has 1 MA's), (Start: 27 @43543 has 83 MA's),

Gene: Scarlett_69 Start: 43726, Stop: 43848, Start Num: 26
Candidate Starts for Scarlett_69:
(Start: 24 @43720 has 1 MA's), (Start: 26 @43726 has 79 MA's), (35, 43804),

Gene: SgtBeansprout_54 Start: 40121, Stop: 40240, Start Num: 26
Candidate Starts for SgtBeansprout_54:
(Start: 26 @40121 has 79 MA's),

Gene: Shadow1_69 Start: 43064, Stop: 43189, Start Num: 27
Candidate Starts for Shadow1_69:
(Start: 24 @43055 has 1 MA's), (Start: 27 @43064 has 83 MA's),

Gene: Shaobing_67 Start: 43330, Stop: 43449, Start Num: 26
Candidate Starts for Shaobing_67:
(22, 43321), (Start: 26 @43330 has 79 MA's),

Gene: ShedlockHolmes_67 Start: 43331, Stop: 43447, Start Num: 27
Candidate Starts for ShedlockHolmes_67:
(4, 43061), (5, 43064), (10, 43133), (11, 43148), (Start: 27 @43331 has 83 MA's),

Gene: ShiaSurprise_65 Start: 43007, Stop: 43126, Start Num: 27
Candidate Starts for ShiaSurprise_65:
(Start: 24 @42998 has 1 MA's), (Start: 27 @43007 has 83 MA's),

Gene: SirPhilip_64 Start: 43484, Stop: 43609, Start Num: 25
Candidate Starts for SirPhilip_64:
(Start: 24 @43478 has 1 MA's), (Start: 25 @43484 has 1 MA's),

Gene: Slarp_68 Start: 42414, Stop: 42530, Start Num: 26
Candidate Starts for Slarp_68:
(Start: 26 @42414 has 79 MA's),

Gene: Slimphazie_65 Start: 43107, Stop: 43226, Start Num: 27
Candidate Starts for Slimphazie_65:
(Start: 24 @43098 has 1 MA's), (Start: 27 @43107 has 83 MA's),

Gene: SoSeph_59 Start: 41921, Stop: 42043, Start Num: 26
Candidate Starts for SoSeph_59:
(22, 41912), (Start: 24 @41915 has 1 MA's), (Start: 26 @41921 has 79 MA's),

Gene: Spock_64 Start: 42811, Stop: 42930, Start Num: 27
Candidate Starts for Spock_64:

(Start: 24 @42802 has 1 MA's), (Start: 27 @42811 has 83 MA's),

Gene: Stinson_66 Start: 43435, Stop: 43554, Start Num: 27

Candidate Starts for Stinson_66:

(Start: 24 @43426 has 1 MA's), (Start: 27 @43435 has 83 MA's),

Gene: Strobilo_68 Start: 45274, Stop: 45393, Start Num: 26

Candidate Starts for Strobilo_68:

(Start: 26 @45274 has 79 MA's),

Gene: Sulley_64 Start: 42871, Stop: 42990, Start Num: 27

Candidate Starts for Sulley_64:

(Start: 24 @42862 has 1 MA's), (Start: 27 @42871 has 83 MA's),

Gene: Sunflower1121_70 Start: 43210, Stop: 43335, Start Num: 27

Candidate Starts for Sunflower1121_70:

(Start: 24 @43201 has 1 MA's), (Start: 27 @43210 has 83 MA's),

Gene: Syra333_68 Start: 42923, Stop: 43048, Start Num: 27

Candidate Starts for Syra333_68:

(Start: 24 @42914 has 1 MA's), (Start: 27 @42923 has 83 MA's),

Gene: TBond007_62 Start: 42811, Stop: 42927, Start Num: 27

Candidate Starts for TBond007_62:

(4, 42541), (5, 42544), (10, 42613), (11, 42628), (15, 42700), (Start: 27 @42811 has 83 MA's),

Gene: TClif_67 Start: 42904, Stop: 43017, Start Num: 29

Candidate Starts for TClif_67:

(6, 42658), (7, 42661), (12, 42730), (13, 42745), (29, 42904),

Gene: TM4_65 Start: 39937, Stop: 40056, Start Num: 26

Candidate Starts for TM4_65:

(Start: 26 @39937 has 79 MA's),

Gene: Tachez_64 Start: 42655, Stop: 42774, Start Num: 27

Candidate Starts for Tachez_64:

(Start: 24 @42646 has 1 MA's), (Start: 27 @42655 has 83 MA's),

Gene: TaiwanKao_67 Start: 43359, Stop: 43478, Start Num: 27

Candidate Starts for TaiwanKao_67:

(Start: 24 @43350 has 1 MA's), (Start: 27 @43359 has 83 MA's),

Gene: Taquito_67 Start: 42649, Stop: 42765, Start Num: 26

Candidate Starts for Taquito_67:

(Start: 26 @42649 has 79 MA's),

Gene: Thyatira_61 Start: 43879, Stop: 44001, Start Num: 26

Candidate Starts for Thyatira_61:

(22, 43870), (Start: 24 @43873 has 1 MA's), (Start: 26 @43879 has 79 MA's),

Gene: Tierra_68 Start: 43424, Stop: 43549, Start Num: 27

Candidate Starts for Tierra_68:

(Start: 24 @43415 has 1 MA's), (Start: 27 @43424 has 83 MA's),

Gene: TiniBug_65 Start: 43539, Stop: 43658, Start Num: 27

Candidate Starts for TiniBug_65:

(Start: 24 @43530 has 1 MA's), (Start: 27 @43539 has 83 MA's),

Gene: Tiri_65 Start: 42943, Stop: 43062, Start Num: 27

Candidate Starts for Tiri_65:

(Start: 24 @42934 has 1 MA's), (Start: 27 @42943 has 83 MA's),

Gene: Topper_64 Start: 42810, Stop: 42929, Start Num: 27

Candidate Starts for Topper_64:

(Start: 24 @42801 has 1 MA's), (Start: 27 @42810 has 83 MA's),

Gene: TreyKay_66 Start: 43297, Stop: 43416, Start Num: 27

Candidate Starts for TreyKay_66:

(Start: 24 @43288 has 1 MA's), (Start: 27 @43297 has 83 MA's),

Gene: TribbleTrouble_66 Start: 43811, Stop: 43930, Start Num: 27

Candidate Starts for TribbleTrouble_66:

(2, 43523), (4, 43541), (5, 43544), (8, 43577), (10, 43613), (11, 43628), (15, 43700), (Start: 27 @43811 has 83 MA's),

Gene: TruffulaTree_65 Start: 43103, Stop: 43222, Start Num: 27

Candidate Starts for TruffulaTree_65:

(Start: 24 @43094 has 1 MA's), (Start: 27 @43103 has 83 MA's),

Gene: Twitch_64 Start: 42812, Stop: 42931, Start Num: 27

Candidate Starts for Twitch_64:

(Start: 24 @42803 has 1 MA's), (Start: 27 @42812 has 83 MA's),

Gene: Unicorn_66 Start: 42549, Stop: 42674, Start Num: 27

Candidate Starts for Unicorn_66:

(Start: 24 @42540 has 1 MA's), (Start: 27 @42549 has 83 MA's),

Gene: Urkel_65 Start: 43543, Stop: 43662, Start Num: 27

Candidate Starts for Urkel_65:

(Start: 24 @43534 has 1 MA's), (Start: 27 @43543 has 83 MA's),

Gene: Validus_69 Start: 43672, Stop: 43791, Start Num: 26

Candidate Starts for Validus_69:

(22, 43666), (Start: 26 @43672 has 79 MA's),

Gene: Veliki_66 Start: 43074, Stop: 43196, Start Num: 26

Candidate Starts for Veliki_66:

(Start: 24 @43068 has 1 MA's), (Start: 26 @43074 has 79 MA's),

Gene: Waterfoul_60 Start: 41983, Stop: 42105, Start Num: 26

Candidate Starts for Waterfoul_60:

(22, 41974), (Start: 24 @41977 has 1 MA's), (Start: 26 @41983 has 79 MA's),

Gene: Wintermute_68 Start: 42644, Stop: 42760, Start Num: 26

Candidate Starts for Wintermute_68:

(Start: 26 @42644 has 79 MA's),

Gene: Ximenita_70 Start: 43249, Stop: 43374, Start Num: 27

Candidate Starts for Ximenita_70:

(Start: 24 @43240 has 1 MA's), (Start: 27 @43249 has 83 MA's),

Gene: YoureAdopted_64 Start: 43223, Stop: 43342, Start Num: 27

Candidate Starts for YoureAdopted_64:

(Start: 24 @43214 has 1 MA's), (Start: 27 @43223 has 83 MA's), (30, 43229),

Gene: Yuna_69 Start: 44370, Stop: 44492, Start Num: 26

Candidate Starts for Yuna_69:

(Start: 24 @44364 has 1 MA's), (Start: 26 @44370 has 79 MA's),

Gene: Yunkel11_69 Start: 43119, Stop: 43244, Start Num: 26

Candidate Starts for Yunkel11_69:

(Start: 24 @43113 has 1 MA's), (Start: 26 @43119 has 79 MA's),

Gene: Zabiza_60 Start: 38960, Stop: 39079, Start Num: 27

Candidate Starts for Zabiza_60:

(Start: 24 @38951 has 1 MA's), (Start: 27 @38960 has 83 MA's),

Gene: Zavala_67 Start: 43379, Stop: 43501, Start Num: 26

Candidate Starts for Zavala_67:

(Start: 24 @43373 has 1 MA's), (Start: 26 @43379 has 79 MA's),

Gene: ZoeJ_66 Start: 44678, Stop: 44797, Start Num: 26

Candidate Starts for ZoeJ_66:

(Start: 26 @44678 has 79 MA's),