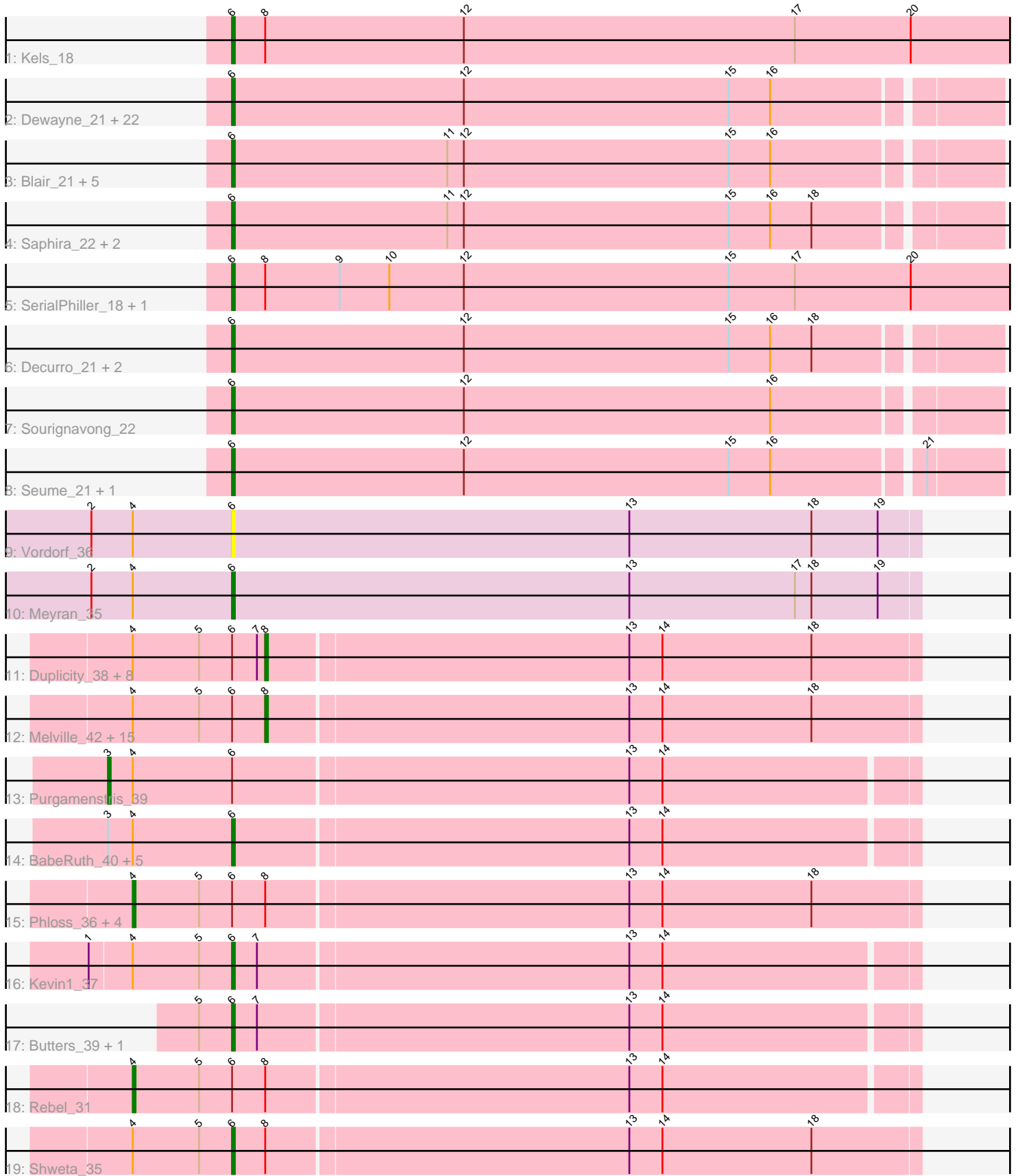


Pham 168156



Note: Tracks are now grouped by subcluster and scaled. Switching in subcluster is indicated by changes in track color. Track scale is now set by default to display the region 30 bp upstream of start 1 to 30 bp downstream of the last possible start. If this default region is judged to be packed too tightly with annotated starts, the track will be further scaled to only show that region of the ORF with annotated starts. This action will be indicated by adding "Zoomed" to the title. For starts, yellow indicates the location of called starts comprised solely of Glimmer/GeneMark auto-annotations, green indicates the location of called starts with at least 1 manual gene annotation.

Pham 168156 Report

This analysis was run 07/09/24 on database version 566.

Pham number 168156 has 85 members, 5 are drafts.

Phages represented in each track:

- Track 1 : Kels_18
- Track 2 : Dewayne_21, Sandman_27, Massimo_21, Copper_21, CGermain_21, Inspire2_21, Courtney3_21, Azathoth_21, Muttlie_21, Moloch_21, Arby_21, TinoCrisci_21, Mariposa_21, Stratus_21, LouisXIV_21, Ronnie_21, Maggie_21, Guntur_21, Chestnut_26, Jessica_22, Hunnie_21, TymAbreu_21, Prospero_21
- Track 3 : Blair_21, Elkhorn_21, Lore_21, StewieGriff_21, KylieMac_22, Laila_23
- Track 4 : Saphira_22, Taj14_21, Swenson_21
- Track 5 : SerialPhiller_18, Arielagos_18
- Track 6 : Decurro_21, Yank_21, Link_21
- Track 7 : Sourignavong_22
- Track 8 : Seume_21, Toulouse_20
- Track 9 : Vordorf_36
- Track 10 : Meyran_35
- Track 11 : Duplicity_38, Tapioca_39, Gex_38, Journey_39, Aggie_36, Silvy_36, Charlie_36, Scitech_35, Xeno_35
- Track 12 : Melville_42, Panchino_34, Jamie19_35, Snekmaggedon_35, SkinnyPete_33, Bosection6_38, Phrann_39, Fulbright_37, Magsby_38, Silvafighter_39, Xerxes_38, MichelleMyBell_36, Parmesanjohn_38, Pipsqueaks_38, SpongeBob_35, Smurph_38
- Track 13 : Purgamenstris_39
- Track 14 : BabeRuth_40, Raymond7_33, PhancyPhin_39, ShrimpFriedEgg_39, Redi_39, Nenae_39
- Track 15 : Phloss_36, Carcharodon_38, Andies_35, Chewbacca_39, Schnauzer_38
- Track 16 : Kevin1_37
- Track 17 : Butters_39, Rubeelu_39
- Track 18 : Rebel_31
- Track 19 : Shweta_35

Summary of Final Annotations (See graph section above for start numbers):

The start number called the most often in the published annotations is 6, it was called in 52 of the 80 non-draft genes in the pham.

Genes that call this "Most Annotated" start:

- Arby_21, Arielagos_18, Azathoth_21, BabeRuth_40, Blair_21, Butters_39, CGermain_21, Chestnut_26, Copper_21, Courtney3_21, Decurro_21, Dewayne_21, Elkhorn_21, Guntur_21, Hunnie_21, Inspire2_21, Jessica_22, Kels_18, Kevin1_37, KylieMac_22, Laila_23, Link_21, Lore_21, LouisXIV_21, Maggie_21, Mariposa_21, Massimo_21, Meyran_35, Moloch_21, Muttlie_21, Nenae_39, PhancyPhin_39, Prospero_21, Raymond7_33, Redi_39, Ronnie_21, Rubeelu_39, Sandman_27, Saphira_22, SerialPhiller_18, Seume_21, ShrimpFriedEgg_39, Shweta_35, Sourignavong_22, StewieGriff_21, Stratus_21, Swenson_21, Taj14_21, TinoCrisci_21, Toulouse_20, TymAbreu_21, Vordorf_36, Yank_21,

Genes that have the "Most Annotated" start but do not call it:

- Aggie_36, Andies_35, Bosection6_38, Carcharodon_38, Charlie_36, Chewbacca_39, Duplicity_38, Fulbright_37, Gex_38, Jamie19_35, Journey_39, Magsby_38, Melville_42, MichelleMyBell_36, Panchino_34, ParmesanJohn_38, Phloss_36, Phrann_39, Pipsqueaks_38, Purgamenstris_39, Rebel_31, Schnauzer_38, Scitech_35, Silvafighter_39, Silvy_36, SkinnyPete_33, Smurph_38, Snekmaggedon_35, SpongeBob_35, Tapioca_39, Xeno_35, Xerxes_38,

Genes that do not have the "Most Annotated" start:

-

Summary by start number:

Start 3:

- Found in 7 of 85 (8.2%) of genes in pham
- Manual Annotations of this start: 1 of 80
- Called 14.3% of time when present
- Phage (with cluster) where this start called: Purgamenstris_39 (N),

Start 4:

- Found in 42 of 85 (49.4%) of genes in pham
- Manual Annotations of this start: 6 of 80
- Called 14.3% of time when present
- Phage (with cluster) where this start called: Andies_35 (N), Carcharodon_38 (N), Chewbacca_39 (N), Phloss_36 (N), Rebel_31 (N), Schnauzer_38 (N),

Start 6:

- Found in 85 of 85 (100.0%) of genes in pham
- Manual Annotations of this start: 52 of 80
- Called 62.4% of time when present
- Phage (with cluster) where this start called: Arby_21 (AN), Arielagos_18 (AN), Azathoth_21 (AN), BabeRuth_40 (N), Blair_21 (AN), Butters_39 (N), CGermain_21 (AN), Chestnut_26 (AN), Copper_21 (AN), Courtney3_21 (AN), Decurro_21 (AN), Dewayne_21 (AN), Elkhorn_21 (AN), Guntur_21 (AN), Hunnie_21 (AN), Inspire2_21 (AN), Jessica_22 (AN), Kels_18 (AN), Kevin1_37 (N), KylieMac_22 (AN), Laila_23 (AN), Link_21 (AN), Lore_21 (AN), LouisXIV_21 (AN), Maggie_21 (AN), Mariposa_21 (AN), Massimo_21 (AN), Meyran_35 (DT), Moloch_21 (AN), Muttlie_21 (AN), Nenae_39 (N), PhancyPhin_39 (N), Prospero_21 (AN), Raymond7_33 (N), Redi_39 (N), Ronnie_21 (AN), Rubeelu_39 (N), Sandman_27 (AN), Saphira_22 (AN), SerialPhiller_18 (AN), Seume_21 (AN), ShrimpFriedEgg_39 (N), Shweta_35 (N), Sourignavong_22 (AN), StewieGriff_21 (AN), Stratus_21 (AN), Swenson_21 (AN), Taj14_21 (AN), TinoCrisci_21 (AN), Toulouse_20 (AN), TymAbreu_21 (AN), Vordorf_36 (DT), Yank_21 (AN),

Start 8:

- Found in 35 of 85 (41.2%) of genes in pham
- Manual Annotations of this start: 21 of 80
- Called 71.4% of time when present
- Phage (with cluster) where this start called: Aggie_36 (N), Bosection6_38 (N), Charlie_36 (N), Duplicity_38 (N), Fulbright_37 (N), Gex_38 (N), Jamie19_35 (N), Journey_39 (N), Magsby_38 (N), Melville_42 (N), MichelleMyBell_36 (N), Panchino_34 (N), Parmesanjohn_38 (N), Phrann_39 (N), Pipsqueaks_38 (N), Scitech_35 (N), Silvafighter_39 (N), Silvy_36 (N), SkinnyPete_33 (N), Smurph_38 (N), Snekmaggedon_35 (N), SpongeBob_35 (N), Tapioca_39 (N), Xeno_35 (N), Xerxes_38 (N),

Summary by clusters:

There are 3 clusters represented in this pham: DT, AN, N,

Info for manual annotations of cluster AN:

- Start number 6 was manually annotated 41 times for cluster AN.

Info for manual annotations of cluster DT:

- Start number 6 was manually annotated 1 time for cluster DT.

Info for manual annotations of cluster N:

- Start number 3 was manually annotated 1 time for cluster N.
- Start number 4 was manually annotated 6 times for cluster N.
- Start number 6 was manually annotated 10 times for cluster N.
- Start number 8 was manually annotated 21 times for cluster N.

Gene Information:

Gene: Aggie_36 Start: 27900, Stop: 28133, Start Num: 8

Candidate Starts for Aggie_36:

(Start: 4 @27852 has 6 MA's), (5, 27876), (Start: 6 @27888 has 52 MA's), (7, 27897), (Start: 8 @27900 has 21 MA's), (13, 28029), (14, 28041), (18, 28095),

Gene: Andies_35 Start: 28370, Stop: 28651, Start Num: 4

Candidate Starts for Andies_35:

(Start: 4 @28370 has 6 MA's), (5, 28394), (Start: 6 @28406 has 52 MA's), (Start: 8 @28418 has 21 MA's), (13, 28547), (14, 28559), (18, 28613),

Gene: Arby_21 Start: 13776, Stop: 13504, Start Num: 6

Candidate Starts for Arby_21:

(Start: 6 @13776 has 52 MA's), (12, 13692), (15, 13596), (16, 13581),

Gene: Arielagos_18 Start: 12965, Stop: 12678, Start Num: 6

Candidate Starts for Arielagos_18:

(Start: 6 @12965 has 52 MA's), (Start: 8 @12953 has 21 MA's), (9, 12926), (10, 12908), (12, 12881), (15, 12785), (17, 12761), (20, 12719),

Gene: Azathoth_21 Start: 13776, Stop: 13504, Start Num: 6

Candidate Starts for Azathoth_21:

(Start: 6 @13776 has 52 MA's), (12, 13692), (15, 13596), (16, 13581),

Gene: BabeRuth_40 Start: 29534, Stop: 29776, Start Num: 6

Candidate Starts for BabeRuth_40:

(Start: 3 @29489 has 1 MA's), (Start: 4 @29498 has 6 MA's), (Start: 6 @29534 has 52 MA's), (13, 29675), (14, 29687),

Gene: Blair_21 Start: 13773, Stop: 13501, Start Num: 6

Candidate Starts for Blair_21:

(Start: 6 @13773 has 52 MA's), (11, 13695), (12, 13689), (15, 13593), (16, 13578),

Gene: Bosection6_38 Start: 27921, Stop: 28154, Start Num: 8

Candidate Starts for Bosection6_38:

(Start: 4 @27873 has 6 MA's), (5, 27897), (Start: 6 @27909 has 52 MA's), (Start: 8 @27921 has 21 MA's), (13, 28050), (14, 28062), (18, 28116),

Gene: Butters_39 Start: 29960, Stop: 30202, Start Num: 6

Candidate Starts for Butters_39:

(5, 29948), (Start: 6 @29960 has 52 MA's), (7, 29969), (13, 30101), (14, 30113),

Gene: CGermain_21 Start: 13776, Stop: 13504, Start Num: 6

Candidate Starts for CGermain_21:

(Start: 6 @13776 has 52 MA's), (12, 13692), (15, 13596), (16, 13581),

Gene: Carcharodon_38 Start: 29181, Stop: 29462, Start Num: 4

Candidate Starts for Carcharodon_38:

(Start: 4 @29181 has 6 MA's), (5, 29205), (Start: 6 @29217 has 52 MA's), (Start: 8 @29229 has 21 MA's), (13, 29358), (14, 29370), (18, 29424),

Gene: Charlie_36 Start: 27920, Stop: 28153, Start Num: 8

Candidate Starts for Charlie_36:

(Start: 4 @27872 has 6 MA's), (5, 27896), (Start: 6 @27908 has 52 MA's), (7, 27917), (Start: 8 @27920 has 21 MA's), (13, 28049), (14, 28061), (18, 28115),

Gene: Chestnut_26 Start: 13776, Stop: 13504, Start Num: 6

Candidate Starts for Chestnut_26:

(Start: 6 @13776 has 52 MA's), (12, 13692), (15, 13596), (16, 13581),

Gene: Chewbacca_39 Start: 29181, Stop: 29462, Start Num: 4

Candidate Starts for Chewbacca_39:

(Start: 4 @29181 has 6 MA's), (5, 29205), (Start: 6 @29217 has 52 MA's), (Start: 8 @29229 has 21 MA's), (13, 29358), (14, 29370), (18, 29424),

Gene: Copper_21 Start: 13776, Stop: 13504, Start Num: 6

Candidate Starts for Copper_21:

(Start: 6 @13776 has 52 MA's), (12, 13692), (15, 13596), (16, 13581),

Gene: Courtney3_21 Start: 13776, Stop: 13504, Start Num: 6

Candidate Starts for Courtney3_21:

(Start: 6 @13776 has 52 MA's), (12, 13692), (15, 13596), (16, 13581),

Gene: Decurro_21 Start: 13744, Stop: 13472, Start Num: 6

Candidate Starts for Decurro_21:

(Start: 6 @13744 has 52 MA's), (12, 13660), (15, 13564), (16, 13549), (18, 13534),

Gene: Dewayne_21 Start: 13776, Stop: 13504, Start Num: 6

Candidate Starts for Dewayne_21:

(Start: 6 @13776 has 52 MA's), (12, 13692), (15, 13596), (16, 13581),

Gene: Duplicity_38 Start: 29238, Stop: 29471, Start Num: 8

Candidate Starts for Duplicity_38:

(Start: 4 @29190 has 6 MA's), (5, 29214), (Start: 6 @29226 has 52 MA's), (7, 29235), (Start: 8 @29238 has 21 MA's), (13, 29367), (14, 29379), (18, 29433),

Gene: Elkhorn_21 Start: 13773, Stop: 13501, Start Num: 6

Candidate Starts for Elkhorn_21:

(Start: 6 @13773 has 52 MA's), (11, 13695), (12, 13689), (15, 13593), (16, 13578),

Gene: Fulbright_37 Start: 28318, Stop: 28551, Start Num: 8

Candidate Starts for Fulbright_37:

(Start: 4 @28270 has 6 MA's), (5, 28294), (Start: 6 @28306 has 52 MA's), (Start: 8 @28318 has 21 MA's), (13, 28447), (14, 28459), (18, 28513),

Gene: Gex_38 Start: 29245, Stop: 29478, Start Num: 8

Candidate Starts for Gex_38:

(Start: 4 @29197 has 6 MA's), (5, 29221), (Start: 6 @29233 has 52 MA's), (7, 29242), (Start: 8 @29245 has 21 MA's), (13, 29374), (14, 29386), (18, 29440),

Gene: Guntur_21 Start: 13776, Stop: 13504, Start Num: 6

Candidate Starts for Guntur_21:

(Start: 6 @13776 has 52 MA's), (12, 13692), (15, 13596), (16, 13581),

Gene: Hunnie_21 Start: 13776, Stop: 13504, Start Num: 6

Candidate Starts for Hunnie_21:

(Start: 6 @13776 has 52 MA's), (12, 13692), (15, 13596), (16, 13581),

Gene: Inspire2_21 Start: 13776, Stop: 13504, Start Num: 6

Candidate Starts for Inspire2_21:

(Start: 6 @13776 has 52 MA's), (12, 13692), (15, 13596), (16, 13581),

Gene: Jamie19_35 Start: 28299, Stop: 28532, Start Num: 8

Candidate Starts for Jamie19_35:

(Start: 4 @28251 has 6 MA's), (5, 28275), (Start: 6 @28287 has 52 MA's), (Start: 8 @28299 has 21 MA's), (13, 28428), (14, 28440), (18, 28494),

Gene: Jessica_22 Start: 13776, Stop: 13504, Start Num: 6

Candidate Starts for Jessica_22:

(Start: 6 @13776 has 52 MA's), (12, 13692), (15, 13596), (16, 13581),

Gene: Journey_39 Start: 27920, Stop: 28153, Start Num: 8

Candidate Starts for Journey_39:

(Start: 4 @27872 has 6 MA's), (5, 27896), (Start: 6 @27908 has 52 MA's), (7, 27917), (Start: 8 @27920 has 21 MA's), (13, 28049), (14, 28061), (18, 28115),

Gene: Kels_18 Start: 12902, Stop: 12615, Start Num: 6

Candidate Starts for Kels_18:

(Start: 6 @12902 has 52 MA's), (Start: 8 @12890 has 21 MA's), (12, 12818), (17, 12698), (20, 12656),

Gene: Kevin1_37 Start: 29139, Stop: 29381, Start Num: 6

Candidate Starts for Kevin1_37:

(1, 29088), (Start: 4 @29103 has 6 MA's), (5, 29127), (Start: 6 @29139 has 52 MA's), (7, 29148), (13, 29280), (14, 29292),

Gene: KylieMac_22 Start: 13760, Stop: 13488, Start Num: 6

Candidate Starts for KylieMac_22:

(Start: 6 @13760 has 52 MA's), (11, 13682), (12, 13676), (15, 13580), (16, 13565),

Gene: Laila_23 Start: 13773, Stop: 13501, Start Num: 6

Candidate Starts for Laila_23:

(Start: 6 @13773 has 52 MA's), (11, 13695), (12, 13689), (15, 13593), (16, 13578),

Gene: Link_21 Start: 13741, Stop: 13469, Start Num: 6

Candidate Starts for Link_21:

(Start: 6 @13741 has 52 MA's), (12, 13657), (15, 13561), (16, 13546), (18, 13531),

Gene: Lore_21 Start: 13773, Stop: 13501, Start Num: 6

Candidate Starts for Lore_21:

(Start: 6 @13773 has 52 MA's), (11, 13695), (12, 13689), (15, 13593), (16, 13578),

Gene: LouisXIV_21 Start: 13776, Stop: 13504, Start Num: 6

Candidate Starts for LouisXIV_21:

(Start: 6 @13776 has 52 MA's), (12, 13692), (15, 13596), (16, 13581),

Gene: Maggie_21 Start: 13776, Stop: 13504, Start Num: 6

Candidate Starts for Maggie_21:

(Start: 6 @13776 has 52 MA's), (12, 13692), (15, 13596), (16, 13581),

Gene: Magsby_38 Start: 29246, Stop: 29479, Start Num: 8

Candidate Starts for Magsby_38:

(Start: 4 @29198 has 6 MA's), (5, 29222), (Start: 6 @29234 has 52 MA's), (Start: 8 @29246 has 21 MA's), (13, 29375), (14, 29387), (18, 29441),

Gene: Mariposa_21 Start: 13776, Stop: 13504, Start Num: 6

Candidate Starts for Mariposa_21:

(Start: 6 @13776 has 52 MA's), (12, 13692), (15, 13596), (16, 13581),

Gene: Massimo_21 Start: 13776, Stop: 13504, Start Num: 6

Candidate Starts for Massimo_21:

(Start: 6 @13776 has 52 MA's), (12, 13692), (15, 13596), (16, 13581),

Gene: Melville_42 Start: 29230, Stop: 29463, Start Num: 8

Candidate Starts for Melville_42:

(Start: 4 @29182 has 6 MA's), (5, 29206), (Start: 6 @29218 has 52 MA's), (Start: 8 @29230 has 21 MA's), (13, 29359), (14, 29371), (18, 29425),

Gene: Meyran_35 Start: 31028, Stop: 31276, Start Num: 6

Candidate Starts for Meyran_35:

(2, 30977), (Start: 4 @30992 has 6 MA's), (Start: 6 @31028 has 52 MA's), (13, 31172), (17, 31232), (18, 31238), (19, 31262),

Gene: MichelleMyBell_36 Start: 28237, Stop: 28470, Start Num: 8

Candidate Starts for MichelleMyBell_36:

(Start: 4 @28189 has 6 MA's), (5, 28213), (Start: 6 @28225 has 52 MA's), (Start: 8 @28237 has 21 MA's), (13, 28366), (14, 28378), (18, 28432),

Gene: Moloch_21 Start: 13850, Stop: 13578, Start Num: 6

Candidate Starts for Moloch_21:

(Start: 6 @13850 has 52 MA's), (12, 13766), (15, 13670), (16, 13655),

Gene: Muttlie_21 Start: 13744, Stop: 13472, Start Num: 6

Candidate Starts for Muttlie_21:

(Start: 6 @13744 has 52 MA's), (12, 13660), (15, 13564), (16, 13549),

Gene: Nenae_39 Start: 29536, Stop: 29778, Start Num: 6

Candidate Starts for Nenae_39:

(Start: 3 @29491 has 1 MA's), (Start: 4 @29500 has 6 MA's), (Start: 6 @29536 has 52 MA's), (13, 29677), (14, 29689),

Gene: Panchino_34 Start: 29645, Stop: 29878, Start Num: 8

Candidate Starts for Panchino_34:

(Start: 4 @29597 has 6 MA's), (5, 29621), (Start: 6 @29633 has 52 MA's), (Start: 8 @29645 has 21 MA's), (13, 29774), (14, 29786), (18, 29840),

Gene: Parmesanjohn_38 Start: 29249, Stop: 29482, Start Num: 8

Candidate Starts for Parmesanjohn_38:

(Start: 4 @29201 has 6 MA's), (5, 29225), (Start: 6 @29237 has 52 MA's), (Start: 8 @29249 has 21 MA's), (13, 29378), (14, 29390), (18, 29444),

Gene: PhancyPhin_39 Start: 29530, Stop: 29772, Start Num: 6

Candidate Starts for PhancyPhin_39:

(Start: 3 @29485 has 1 MA's), (Start: 4 @29494 has 6 MA's), (Start: 6 @29530 has 52 MA's), (13, 29671), (14, 29683),

Gene: Phloss_36 Start: 28608, Stop: 28889, Start Num: 4

Candidate Starts for Phloss_36:

(Start: 4 @28608 has 6 MA's), (5, 28632), (Start: 6 @28644 has 52 MA's), (Start: 8 @28656 has 21 MA's), (13, 28785), (14, 28797), (18, 28851),

Gene: Phrann_39 Start: 30325, Stop: 30558, Start Num: 8

Candidate Starts for Phrann_39:

(Start: 4 @30277 has 6 MA's), (5, 30301), (Start: 6 @30313 has 52 MA's), (Start: 8 @30325 has 21 MA's), (13, 30454), (14, 30466), (18, 30520),

Gene: Pipsqueaks_38 Start: 29226, Stop: 29459, Start Num: 8

Candidate Starts for Pipsqueaks_38:

(Start: 4 @29178 has 6 MA's), (5, 29202), (Start: 6 @29214 has 52 MA's), (Start: 8 @29226 has 21 MA's), (13, 29355), (14, 29367), (18, 29421),

Gene: Prospero_21 Start: 13776, Stop: 13504, Start Num: 6

Candidate Starts for Prospero_21:

(Start: 6 @13776 has 52 MA's), (12, 13692), (15, 13596), (16, 13581),

Gene: Purgamenstris_39 Start: 29489, Stop: 29776, Start Num: 3

Candidate Starts for Purgamenstris_39:

(Start: 3 @29489 has 1 MA's), (Start: 4 @29498 has 6 MA's), (Start: 6 @29534 has 52 MA's), (13, 29675), (14, 29687),

Gene: Raymond7_33 Start: 29346, Stop: 29588, Start Num: 6

Candidate Starts for Raymond7_33:

(Start: 3 @29301 has 1 MA's), (Start: 4 @29310 has 6 MA's), (Start: 6 @29346 has 52 MA's), (13, 29487), (14, 29499),

Gene: Rebel_31 Start: 25628, Stop: 25906, Start Num: 4

Candidate Starts for Rebel_31:

(Start: 4 @25628 has 6 MA's), (5, 25652), (Start: 6 @25664 has 52 MA's), (Start: 8 @25676 has 21 MA's), (13, 25805), (14, 25817),

Gene: Redi_39 Start: 29533, Stop: 29775, Start Num: 6

Candidate Starts for Redi_39:

(Start: 3 @29488 has 1 MA's), (Start: 4 @29497 has 6 MA's), (Start: 6 @29533 has 52 MA's), (13, 29674), (14, 29686),

Gene: Ronnie_21 Start: 13776, Stop: 13504, Start Num: 6

Candidate Starts for Ronnie_21:

(Start: 6 @13776 has 52 MA's), (12, 13692), (15, 13596), (16, 13581),

Gene: Rubeelu_39 Start: 29960, Stop: 30202, Start Num: 6

Candidate Starts for Rubeelu_39:

(5, 29948), (Start: 6 @29960 has 52 MA's), (7, 29969), (13, 30101), (14, 30113),

Gene: Sandman_27 Start: 13850, Stop: 13578, Start Num: 6

Candidate Starts for Sandman_27:

(Start: 6 @13850 has 52 MA's), (12, 13766), (15, 13670), (16, 13655),

Gene: Saphira_22 Start: 13775, Stop: 13503, Start Num: 6

Candidate Starts for Saphira_22:

(Start: 6 @13775 has 52 MA's), (11, 13697), (12, 13691), (15, 13595), (16, 13580), (18, 13565),

Gene: Schnauzer_38 Start: 29201, Stop: 29482, Start Num: 4

Candidate Starts for Schnauzer_38:

(Start: 4 @29201 has 6 MA's), (5, 29225), (Start: 6 @29237 has 52 MA's), (Start: 8 @29249 has 21 MA's), (13, 29378), (14, 29390), (18, 29444),

Gene: Scitech_35 Start: 27097, Stop: 27330, Start Num: 8

Candidate Starts for Scitech_35:

(Start: 4 @27049 has 6 MA's), (5, 27073), (Start: 6 @27085 has 52 MA's), (7, 27094), (Start: 8 @27097 has 21 MA's), (13, 27226), (14, 27238), (18, 27292),

Gene: SerialPhiller_18 Start: 12965, Stop: 12678, Start Num: 6

Candidate Starts for SerialPhiller_18:

(Start: 6 @12965 has 52 MA's), (Start: 8 @12953 has 21 MA's), (9, 12926), (10, 12908), (12, 12881), (15, 12785), (17, 12761), (20, 12719),

Gene: Seume_21 Start: 13539, Stop: 13267, Start Num: 6
Candidate Starts for Seume_21:
(Start: 6 @13539 has 52 MA's), (12, 13455), (15, 13359), (16, 13344), (21, 13293),

Gene: ShrimpFriedEgg_39 Start: 29533, Stop: 29775, Start Num: 6
Candidate Starts for ShrimpFriedEgg_39:
(Start: 3 @29488 has 1 MA's), (Start: 4 @29497 has 6 MA's), (Start: 6 @29533 has 52 MA's), (13, 29674), (14, 29686),

Gene: Shweta_35 Start: 28417, Stop: 28662, Start Num: 6
Candidate Starts for Shweta_35:
(Start: 4 @28381 has 6 MA's), (5, 28405), (Start: 6 @28417 has 52 MA's), (Start: 8 @28429 has 21 MA's), (13, 28558), (14, 28570), (18, 28624),

Gene: Silvafighter_39 Start: 29222, Stop: 29455, Start Num: 8
Candidate Starts for Silvafighter_39:
(Start: 4 @29174 has 6 MA's), (5, 29198), (Start: 6 @29210 has 52 MA's), (Start: 8 @29222 has 21 MA's), (13, 29351), (14, 29363), (18, 29417),

Gene: Silvy_36 Start: 27900, Stop: 28133, Start Num: 8
Candidate Starts for Silvy_36:
(Start: 4 @27852 has 6 MA's), (5, 27876), (Start: 6 @27888 has 52 MA's), (7, 27897), (Start: 8 @27900 has 21 MA's), (13, 28029), (14, 28041), (18, 28095),

Gene: SkinnyPete_33 Start: 26960, Stop: 27193, Start Num: 8
Candidate Starts for SkinnyPete_33:
(Start: 4 @26912 has 6 MA's), (5, 26936), (Start: 6 @26948 has 52 MA's), (Start: 8 @26960 has 21 MA's), (13, 27089), (14, 27101), (18, 27155),

Gene: Smurph_38 Start: 29249, Stop: 29482, Start Num: 8
Candidate Starts for Smurph_38:
(Start: 4 @29201 has 6 MA's), (5, 29225), (Start: 6 @29237 has 52 MA's), (Start: 8 @29249 has 21 MA's), (13, 29378), (14, 29390), (18, 29444),

Gene: Snekmaggedon_35 Start: 28299, Stop: 28532, Start Num: 8
Candidate Starts for Snekmaggedon_35:
(Start: 4 @28251 has 6 MA's), (5, 28275), (Start: 6 @28287 has 52 MA's), (Start: 8 @28299 has 21 MA's), (13, 28428), (14, 28440), (18, 28494),

Gene: Sourignavong_22 Start: 13845, Stop: 13573, Start Num: 6
Candidate Starts for Sourignavong_22:
(Start: 6 @13845 has 52 MA's), (12, 13761), (16, 13650),

Gene: SpongeBob_35 Start: 28299, Stop: 28532, Start Num: 8
Candidate Starts for SpongeBob_35:
(Start: 4 @28251 has 6 MA's), (5, 28275), (Start: 6 @28287 has 52 MA's), (Start: 8 @28299 has 21 MA's), (13, 28428), (14, 28440), (18, 28494),

Gene: StewieGriff_21 Start: 13773, Stop: 13501, Start Num: 6
Candidate Starts for StewieGriff_21:
(Start: 6 @13773 has 52 MA's), (11, 13695), (12, 13689), (15, 13593), (16, 13578),

Gene: Stratus_21 Start: 13850, Stop: 13578, Start Num: 6

Candidate Starts for Stratus_21:

(Start: 6 @13850 has 52 MA's), (12, 13766), (15, 13670), (16, 13655),

Gene: Swenson_21 Start: 13897, Stop: 13625, Start Num: 6

Candidate Starts for Swenson_21:

(Start: 6 @13897 has 52 MA's), (11, 13819), (12, 13813), (15, 13717), (16, 13702), (18, 13687),

Gene: Taj14_21 Start: 13772, Stop: 13500, Start Num: 6

Candidate Starts for Taj14_21:

(Start: 6 @13772 has 52 MA's), (11, 13694), (12, 13688), (15, 13592), (16, 13577), (18, 13562),

Gene: Tapioca_39 Start: 29215, Stop: 29448, Start Num: 8

Candidate Starts for Tapioca_39:

(Start: 4 @29167 has 6 MA's), (5, 29191), (Start: 6 @29203 has 52 MA's), (7, 29212), (Start: 8 @29215 has 21 MA's), (13, 29344), (14, 29356), (18, 29410),

Gene: TinoCrisci_21 Start: 13776, Stop: 13504, Start Num: 6

Candidate Starts for TinoCrisci_21:

(Start: 6 @13776 has 52 MA's), (12, 13692), (15, 13596), (16, 13581),

Gene: Toulouse_20 Start: 13539, Stop: 13267, Start Num: 6

Candidate Starts for Toulouse_20:

(Start: 6 @13539 has 52 MA's), (12, 13455), (15, 13359), (16, 13344), (21, 13293),

Gene: TymAbreu_21 Start: 13776, Stop: 13504, Start Num: 6

Candidate Starts for TymAbreu_21:

(Start: 6 @13776 has 52 MA's), (12, 13692), (15, 13596), (16, 13581),

Gene: Vordorf_36 Start: 30303, Stop: 30551, Start Num: 6

Candidate Starts for Vordorf_36:

(2, 30252), (Start: 4 @30267 has 6 MA's), (Start: 6 @30303 has 52 MA's), (13, 30447), (18, 30513), (19, 30537),

Gene: Xeno_35 Start: 27686, Stop: 27919, Start Num: 8

Candidate Starts for Xeno_35:

(Start: 4 @27638 has 6 MA's), (5, 27662), (Start: 6 @27674 has 52 MA's), (7, 27683), (Start: 8 @27686 has 21 MA's), (13, 27815), (14, 27827), (18, 27881),

Gene: Xerxes_38 Start: 29246, Stop: 29479, Start Num: 8

Candidate Starts for Xerxes_38:

(Start: 4 @29198 has 6 MA's), (5, 29222), (Start: 6 @29234 has 52 MA's), (Start: 8 @29246 has 21 MA's), (13, 29375), (14, 29387), (18, 29441),

Gene: Yank_21 Start: 13744, Stop: 13472, Start Num: 6

Candidate Starts for Yank_21:

(Start: 6 @13744 has 52 MA's), (12, 13660), (15, 13564), (16, 13549), (18, 13534),