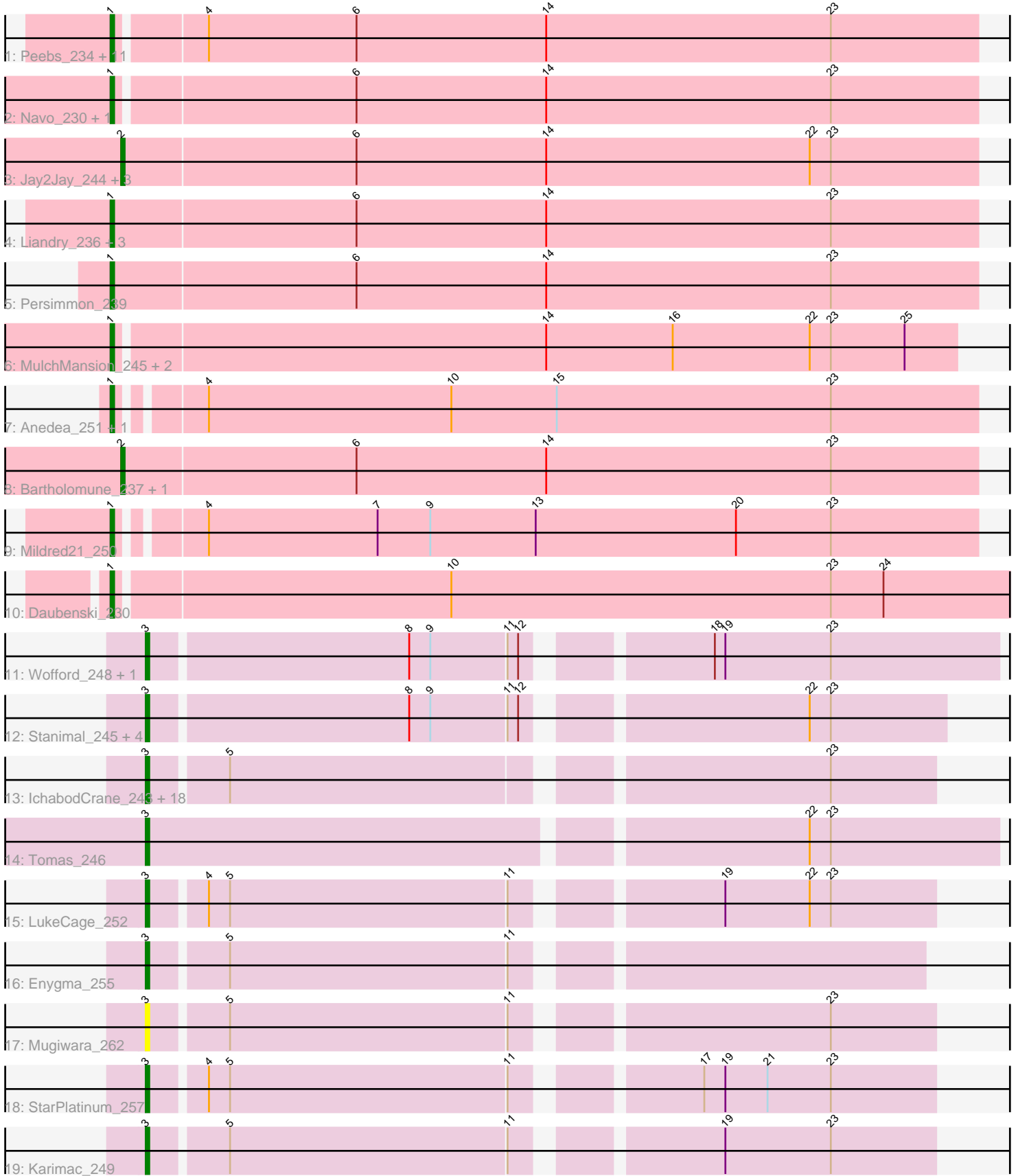


Pham 168231



Note: Tracks are now grouped by subcluster and scaled. Switching in subcluster is indicated by changes in track color. Track scale is now set by default to display the region 30 bp upstream of start 1 to 30 bp downstream of the last possible start. If this default region is judged to be packed too tightly with annotated starts, the track will be further scaled to only show that region of the ORF with annotated starts. This action will be indicated by adding "Zoomed" to the title. For starts, yellow indicates the location of called starts comprised solely of Glimmer/GeneMark auto-annotations, green indicates the location of called starts with at least 1 manual gene annotation.

Pham 168231 Report

This analysis was run 07/09/24 on database version 566.

Pham number 168231 has 64 members, 9 are drafts.

Phages represented in each track:

- Track 1 : Peebs_234, Leo04_239, Pepperwood_238, Teutsch_237, PacManQ_239, EGole_244, Cursive_241, Sushi23_239, Lululemon_238, Samisti12_240, Watermoore_236, Tribute_234
- Track 2 : Navo_230, Braelyn_232
- Track 3 : Jay2Jay_244, Evy_227, Targaryen_237, Warpy_241
- Track 4 : Liandry_236, Squillium_239, PinkiePie_237, Paradiddles_228
- Track 5 : Persimmon_239
- Track 6 : MulchMansion_245, LilMartin_241, Angela_245
- Track 7 : Anedea_251, Bmoc_244
- Track 8 : Bartholomune_237, WhereRU_244
- Track 9 : Mildred21_250
- Track 10 : Daubenski_230
- Track 11 : Wofford_248, Elmer_265
- Track 12 : Stanimal_245, Genie2_245, BoomerJR_245, Sollertia_246, Yaboi_250
- Track 13 : IchabodCrane_243, Spelly_254, Gibbi_257, Quarant19_249, JimJam_256, Wipeout_239, CeilingFan_261, Spilled_256, TomSawyer_253, Starbow_246, KentuckyRacer_260, Battuta_247, Jollison_253, SaltySpittoon_249, Amabiko_253, Birchlyn_248, Bordeaux_247, PumpkinSpice_252, MindFlayer_242
- Track 14 : Tomas_246
- Track 15 : LukeCage_252
- Track 16 : Enyigma_255
- Track 17 : Mugiwara_262
- Track 18 : StarPlatinum_257
- Track 19 : Karimac_249

Summary of Final Annotations (See graph section above for start numbers):

The start number called the most often in the published annotations is 3, it was called in 26 of the 55 non-draft genes in the pham.

Genes that call this "Most Annotated" start:

- Amabiko_253, Battuta_247, Birchlyn_248, BoomerJR_245, Bordeaux_247, CeilingFan_261, Elmer_265, Enyigma_255, Genie2_245, Gibbi_257, IchabodCrane_243, JimJam_256, Jollison_253, Karimac_249, KentuckyRacer_260,

LukeCage_252, MindFlayer_242, Mugiwara_262, PumpkinSpice_252, Quaran19_249, SaltySpittoon_249, Sollertia_246, Spelly_254, Spilled_256, Stanimal_245, StarPlatinum_257, Starbow_246, TomSawyer_253, Tomas_246, Wipeout_239, Wofford_248, Yaboi_250,

Genes that have the "Most Annotated" start but do not call it:

-

Genes that do not have the "Most Annotated" start:

- Anedea_251, Angela_245, Bartholomune_237, Bmoc_244, Braelyn_232, Cursive_241, Daubenski_230, EGole_244, Evy_227, Jay2Jay_244, Leo04_239, Liandry_236, LilMartin_241, Lululemon_238, Mildred21_250, MulchMansion_245, Navo_230, PacManQ_239, Paradiddles_228, Peebs_234, Pepperwood_238, Persimmon_239, PinkiePie_237, Samisti12_240, Squillium_239, Sushi23_239, Targaryen_237, Teutsch_237, Tribute_234, Warpy_241, Watermoore_236, WhereRU_244,

Summary by start number:

Start 1:

- Found in 26 of 64 (40.6%) of genes in pham
- Manual Annotations of this start: 24 of 55
- Called 100.0% of time when present
- Phage (with cluster) where this start called: Anedea_251 (BE1), Angela_245 (BE1), Bmoc_244 (BE1), Braelyn_232 (BE1), Cursive_241 (BE1), Daubenski_230 (BE1), EGole_244 (BE1), Leo04_239 (BE1), Liandry_236 (BE1), LilMartin_241 (BE1), Lululemon_238 (BE1), Mildred21_250 (BE1), MulchMansion_245 (BE1), Navo_230 (BE1), PacManQ_239 (BE1), Paradiddles_228 (BE1), Peebs_234 (BE1), Pepperwood_238 (BE1), Persimmon_239 (BE1), PinkiePie_237 (BE1), Samisti12_240 (BE1), Squillium_239 (BE1), Sushi23_239 (BE1), Teutsch_237 (BE1), Tribute_234 (BE1), Watermoore_236 (BE1),

Start 2:

- Found in 6 of 64 (9.4%) of genes in pham
- Manual Annotations of this start: 5 of 55
- Called 100.0% of time when present
- Phage (with cluster) where this start called: Bartholomune_237 (BE1), Evy_227 (BE1), Jay2Jay_244 (BE1), Targaryen_237 (BE1), Warpy_241 (BE1), WhereRU_244 (BE1),

Start 3:

- Found in 32 of 64 (50.0%) of genes in pham
- Manual Annotations of this start: 26 of 55
- Called 100.0% of time when present
- Phage (with cluster) where this start called: Amabiko_253 (BE2), Battuta_247 (BE2), Birchlyn_248 (BE2), BoomerJR_245 (BE2), Bordeaux_247 (BE2), CeilingFan_261 (BE2), Elmer_265 (BE2), Enygma_255 (BE2), Genie2_245 (BE2), Gibbi_257 (BE2), IchabodCrane_243 (BE2), JimJam_256 (BE2), Jollison_253 (BE2), Karimac_249 (BE2), KentuckyRacer_260 (BE2), LukeCage_252 (BE2), MindFlayer_242 (BE2), Mugiwara_262 (BE2), PumpkinSpice_252 (BE2), Quaran19_249 (BE2), SaltySpittoon_249 (BE2), Sollertia_246 (BE2), Spelly_254 (BE2), Spilled_256 (BE2), Stanimal_245 (BE2), StarPlatinum_257 (BE2), Starbow_246 (BE2), TomSawyer_253 (BE2), Tomas_246 (BE2), Wipeout_239 (BE2), Wofford_248 (BE2), Yaboi_250

(BE2),

Summary by clusters:

There are 2 clusters represented in this pham: BE2, BE1,

Info for manual annotations of cluster BE1:

- Start number 1 was manually annotated 24 times for cluster BE1.
- Start number 2 was manually annotated 5 times for cluster BE1.

Info for manual annotations of cluster BE2:

- Start number 3 was manually annotated 26 times for cluster BE2.

Gene Information:

Gene: Amabiko_253 Start: 114808, Stop: 115017, Start Num: 3

Candidate Starts for Amabiko_253:

(Start: 3 @114808 has 26 MA's), (5, 114829), (23, 114988),

Gene: Anedea_251 Start: 118563, Stop: 118802, Start Num: 1

Candidate Starts for Anedea_251:

(Start: 1 @118563 has 24 MA's), (4, 118584), (10, 118653), (15, 118683), (23, 118761),

Gene: Angela_245 Start: 117915, Stop: 118151, Start Num: 1

Candidate Starts for Angela_245:

(Start: 1 @117915 has 24 MA's), (14, 118035), (16, 118071), (22, 118110), (23, 118116), (25, 118137),

Gene: Bartholomune_237 Start: 116567, Stop: 116809, Start Num: 2

Candidate Starts for Bartholomune_237:

(Start: 2 @116567 has 5 MA's), (6, 116633), (14, 116687), (23, 116768),

Gene: Battuta_247 Start: 114123, Stop: 114332, Start Num: 3

Candidate Starts for Battuta_247:

(Start: 3 @114123 has 26 MA's), (5, 114144), (23, 114303),

Gene: Birchlyn_248 Start: 112056, Stop: 112265, Start Num: 3

Candidate Starts for Birchlyn_248:

(Start: 3 @112056 has 26 MA's), (5, 112077), (23, 112236),

Gene: Bmoc_244 Start: 117335, Stop: 117577, Start Num: 1

Candidate Starts for Bmoc_244:

(Start: 1 @117335 has 24 MA's), (4, 117359), (10, 117428), (15, 117458), (23, 117536),

Gene: BoomerJR_245 Start: 114545, Stop: 114757, Start Num: 3

Candidate Starts for BoomerJR_245:

(Start: 3 @114545 has 26 MA's), (8, 114617), (9, 114623), (11, 114644), (12, 114647), (22, 114719), (23, 114725),

Gene: Bordeaux_247 Start: 114706, Stop: 114915, Start Num: 3

Candidate Starts for Bordeaux_247:

(Start: 3 @114706 has 26 MA's), (5, 114727), (23, 114886),

Gene: Braelyn_232 Start: 115901, Stop: 116143, Start Num: 1

Candidate Starts for Braelyn_232:

(Start: 1 @115901 has 24 MA's), (6, 115967), (14, 116021), (23, 116102),

Gene: CeilingFan_261 Start: 115501, Stop: 115710, Start Num: 3

Candidate Starts for CeilingFan_261:

(Start: 3 @115501 has 26 MA's), (5, 115522), (23, 115681),

Gene: Cursive_241 Start: 117493, Stop: 117735, Start Num: 1

Candidate Starts for Cursive_241:

(Start: 1 @117493 has 24 MA's), (4, 117517), (6, 117559), (14, 117613), (23, 117694),

Gene: Daubenski_230 Start: 117745, Stop: 117999, Start Num: 1

Candidate Starts for Daubenski_230:

(Start: 1 @117745 has 24 MA's), (10, 117838), (23, 117946), (24, 117961),

Gene: EGole_244 Start: 119967, Stop: 120209, Start Num: 1

Candidate Starts for EGole_244:

(Start: 1 @119967 has 24 MA's), (4, 119991), (6, 120033), (14, 120087), (23, 120168),

Gene: Elmer_265 Start: 118266, Stop: 118493, Start Num: 3

Candidate Starts for Elmer_265:

(Start: 3 @118266 has 26 MA's), (8, 118338), (9, 118344), (11, 118365), (12, 118368), (18, 118413), (19, 118416), (23, 118446),

Gene: Enygma_255 Start: 117307, Stop: 117513, Start Num: 3

Candidate Starts for Enygma_255:

(Start: 3 @117307 has 26 MA's), (5, 117328), (11, 117406),

Gene: Evy_227 Start: 117420, Stop: 117662, Start Num: 2

Candidate Starts for Evy_227:

(Start: 2 @117420 has 5 MA's), (6, 117486), (14, 117540), (22, 117615), (23, 117621),

Gene: Genie2_245 Start: 114670, Stop: 114882, Start Num: 3

Candidate Starts for Genie2_245:

(Start: 3 @114670 has 26 MA's), (8, 114742), (9, 114748), (11, 114769), (12, 114772), (22, 114844), (23, 114850),

Gene: Gibbi_257 Start: 114994, Stop: 115203, Start Num: 3

Candidate Starts for Gibbi_257:

(Start: 3 @114994 has 26 MA's), (5, 115015), (23, 115174),

Gene: IchabodCrane_243 Start: 114509, Stop: 114718, Start Num: 3

Candidate Starts for IchabodCrane_243:

(Start: 3 @114509 has 26 MA's), (5, 114530), (23, 114689),

Gene: Jay2Jay_244 Start: 117784, Stop: 118026, Start Num: 2

Candidate Starts for Jay2Jay_244:

(Start: 2 @117784 has 5 MA's), (6, 117850), (14, 117904), (22, 117979), (23, 117985),

Gene: JimJam_256 Start: 116430, Stop: 116639, Start Num: 3

Candidate Starts for JimJam_256:

(Start: 3 @116430 has 26 MA's), (5, 116451), (23, 116610),

Gene: Jollison_253 Start: 114640, Stop: 114849, Start Num: 3

Candidate Starts for Jollison_253:

(Start: 3 @114640 has 26 MA's), (5, 114661), (23, 114820),

Gene: Karimac_249 Start: 114825, Stop: 115034, Start Num: 3

Candidate Starts for Karimac_249:

(Start: 3 @114825 has 26 MA's), (5, 114846), (11, 114924), (19, 114975), (23, 115005),

Gene: KentuckyRacer_260 Start: 116345, Stop: 116554, Start Num: 3

Candidate Starts for KentuckyRacer_260:

(Start: 3 @116345 has 26 MA's), (5, 116366), (23, 116525),

Gene: Leo04_239 Start: 117772, Stop: 118014, Start Num: 1

Candidate Starts for Leo04_239:

(Start: 1 @117772 has 24 MA's), (4, 117796), (6, 117838), (14, 117892), (23, 117973),

Gene: Liandry_236 Start: 116955, Stop: 117200, Start Num: 1

Candidate Starts for Liandry_236:

(Start: 1 @116955 has 24 MA's), (6, 117024), (14, 117078), (23, 117159),

Gene: LilMartin_241 Start: 116855, Stop: 117091, Start Num: 1

Candidate Starts for LilMartin_241:

(Start: 1 @116855 has 24 MA's), (14, 116975), (16, 117011), (22, 117050), (23, 117056), (25, 117077),

Gene: LukeCage_252 Start: 116670, Stop: 116879, Start Num: 3

Candidate Starts for LukeCage_252:

(Start: 3 @116670 has 26 MA's), (4, 116685), (5, 116691), (11, 116769), (19, 116820), (22, 116844), (23, 116850),

Gene: Lululemon_238 Start: 116546, Stop: 116788, Start Num: 1

Candidate Starts for Lululemon_238:

(Start: 1 @116546 has 24 MA's), (4, 116570), (6, 116612), (14, 116666), (23, 116747),

Gene: Mildred21_250 Start: 116453, Stop: 116692, Start Num: 1

Candidate Starts for Mildred21_250:

(Start: 1 @116453 has 24 MA's), (4, 116474), (7, 116522), (9, 116537), (13, 116567), (20, 116624), (23, 116651),

Gene: MindFlayer_242 Start: 114025, Stop: 114234, Start Num: 3

Candidate Starts for MindFlayer_242:

(Start: 3 @114025 has 26 MA's), (5, 114046), (23, 114205),

Gene: Mugiwara_262 Start: 117376, Stop: 117585, Start Num: 3

Candidate Starts for Mugiwara_262:

(Start: 3 @117376 has 26 MA's), (5, 117397), (11, 117475), (23, 117556),

Gene: MulchMansion_245 Start: 118489, Stop: 118725, Start Num: 1

Candidate Starts for MulchMansion_245:

(Start: 1 @118489 has 24 MA's), (14, 118609), (16, 118645), (22, 118684), (23, 118690), (25, 118711),

Gene: Navo_230 Start: 115105, Stop: 115347, Start Num: 1

Candidate Starts for Navo_230:

(Start: 1 @115105 has 24 MA's), (6, 115171), (14, 115225), (23, 115306),

Gene: PacManQ_239 Start: 116546, Stop: 116788, Start Num: 1

Candidate Starts for PacManQ_239:

(Start: 1 @116546 has 24 MA's), (4, 116570), (6, 116612), (14, 116666), (23, 116747),

Gene: Paradiddles_228 Start: 118175, Stop: 118417, Start Num: 1

Candidate Starts for Paradiddles_228:

(Start: 1 @118175 has 24 MA's), (6, 118241), (14, 118295), (23, 118376),

Gene: Peebs_234 Start: 117630, Stop: 117872, Start Num: 1

Candidate Starts for Peebs_234:

(Start: 1 @117630 has 24 MA's), (4, 117654), (6, 117696), (14, 117750), (23, 117831),

Gene: Pepperwood_238 Start: 117438, Stop: 117680, Start Num: 1

Candidate Starts for Pepperwood_238:

(Start: 1 @117438 has 24 MA's), (4, 117462), (6, 117504), (14, 117558), (23, 117639),

Gene: Persimmon_239 Start: 116299, Stop: 116544, Start Num: 1

Candidate Starts for Persimmon_239:

(Start: 1 @116299 has 24 MA's), (6, 116368), (14, 116422), (23, 116503),

Gene: PinkiePie_237 Start: 116955, Stop: 117200, Start Num: 1

Candidate Starts for PinkiePie_237:

(Start: 1 @116955 has 24 MA's), (6, 117024), (14, 117078), (23, 117159),

Gene: PumpkinSpice_252 Start: 115246, Stop: 115455, Start Num: 3

Candidate Starts for PumpkinSpice_252:

(Start: 3 @115246 has 26 MA's), (5, 115267), (23, 115426),

Gene: Quaran19_249 Start: 114687, Stop: 114896, Start Num: 3

Candidate Starts for Quaran19_249:

(Start: 3 @114687 has 26 MA's), (5, 114708), (23, 114867),

Gene: SaltySpittoon_249 Start: 114229, Stop: 114438, Start Num: 3

Candidate Starts for SaltySpittoon_249:

(Start: 3 @114229 has 26 MA's), (5, 114250), (23, 114409),

Gene: Samisti12_240 Start: 118695, Stop: 118937, Start Num: 1

Candidate Starts for Samisti12_240:

(Start: 1 @118695 has 24 MA's), (4, 118719), (6, 118761), (14, 118815), (23, 118896),

Gene: Sollertia_246 Start: 114659, Stop: 114871, Start Num: 3

Candidate Starts for Sollertia_246:

(Start: 3 @114659 has 26 MA's), (8, 114731), (9, 114737), (11, 114758), (12, 114761), (22, 114833), (23, 114839),

Gene: Spelly_254 Start: 114158, Stop: 114367, Start Num: 3

Candidate Starts for Spelly_254:
(Start: 3 @114158 has 26 MA's), (5, 114179), (23, 114338),

Gene: Spilled_256 Start: 115362, Stop: 115571, Start Num: 3
Candidate Starts for Spilled_256:
(Start: 3 @115362 has 26 MA's), (5, 115383), (23, 115542),

Gene: Squillium_239 Start: 116957, Stop: 117202, Start Num: 1
Candidate Starts for Squillium_239:
(Start: 1 @116957 has 24 MA's), (6, 117026), (14, 117080), (23, 117161),

Gene: Stanimal_245 Start: 115031, Stop: 115243, Start Num: 3
Candidate Starts for Stanimal_245:
(Start: 3 @115031 has 26 MA's), (8, 115103), (9, 115109), (11, 115130), (12, 115133), (22, 115205),
(23, 115211),

Gene: StarPlatinum_257 Start: 117446, Stop: 117655, Start Num: 3
Candidate Starts for StarPlatinum_257:
(Start: 3 @117446 has 26 MA's), (4, 117461), (5, 117467), (11, 117545), (17, 117590), (19, 117596),
(21, 117608), (23, 117626),

Gene: Starbow_246 Start: 114202, Stop: 114411, Start Num: 3
Candidate Starts for Starbow_246:
(Start: 3 @114202 has 26 MA's), (5, 114223), (23, 114382),

Gene: Sushi23_239 Start: 118496, Stop: 118738, Start Num: 1
Candidate Starts for Sushi23_239:
(Start: 1 @118496 has 24 MA's), (4, 118520), (6, 118562), (14, 118616), (23, 118697),

Gene: Targaryen_237 Start: 118528, Stop: 118770, Start Num: 2
Candidate Starts for Targaryen_237:
(Start: 2 @118528 has 5 MA's), (6, 118594), (14, 118648), (22, 118723), (23, 118729),

Gene: Teutsch_237 Start: 117861, Stop: 118103, Start Num: 1
Candidate Starts for Teutsch_237:
(Start: 1 @117861 has 24 MA's), (4, 117885), (6, 117927), (14, 117981), (23, 118062),

Gene: TomSawyer_253 Start: 116673, Stop: 116882, Start Num: 3
Candidate Starts for TomSawyer_253:
(Start: 3 @116673 has 26 MA's), (5, 116694), (23, 116853),

Gene: Tomas_246 Start: 117740, Stop: 117973, Start Num: 3
Candidate Starts for Tomas_246:
(Start: 3 @117740 has 26 MA's), (22, 117920), (23, 117926),

Gene: Tribute_234 Start: 118026, Stop: 118268, Start Num: 1
Candidate Starts for Tribute_234:
(Start: 1 @118026 has 24 MA's), (4, 118050), (6, 118092), (14, 118146), (23, 118227),

Gene: Warpy_241 Start: 117229, Stop: 117471, Start Num: 2
Candidate Starts for Warpy_241:
(Start: 2 @117229 has 5 MA's), (6, 117295), (14, 117349), (22, 117424), (23, 117430),

Gene: Watermoore_236 Start: 118250, Stop: 118492, Start Num: 1
Candidate Starts for Watermoore_236:
(Start: 1 @118250 has 24 MA's), (4, 118274), (6, 118316), (14, 118370), (23, 118451),

Gene: WhereRU_244 Start: 116636, Stop: 116878, Start Num: 2
Candidate Starts for WhereRU_244:
(Start: 2 @116636 has 5 MA's), (6, 116702), (14, 116756), (23, 116837),

Gene: Wipeout_239 Start: 115625, Stop: 115834, Start Num: 3
Candidate Starts for Wipeout_239:
(Start: 3 @115625 has 26 MA's), (5, 115646), (23, 115805),

Gene: Wofford_248 Start: 117708, Stop: 117935, Start Num: 3
Candidate Starts for Wofford_248:
(Start: 3 @117708 has 26 MA's), (8, 117780), (9, 117786), (11, 117807), (12, 117810), (18, 117855),
(19, 117858), (23, 117888),

Gene: Yaboi_250 Start: 114594, Stop: 114806, Start Num: 3
Candidate Starts for Yaboi_250:
(Start: 3 @114594 has 26 MA's), (8, 114666), (9, 114672), (11, 114693), (12, 114696), (22, 114768),
(23, 114774),