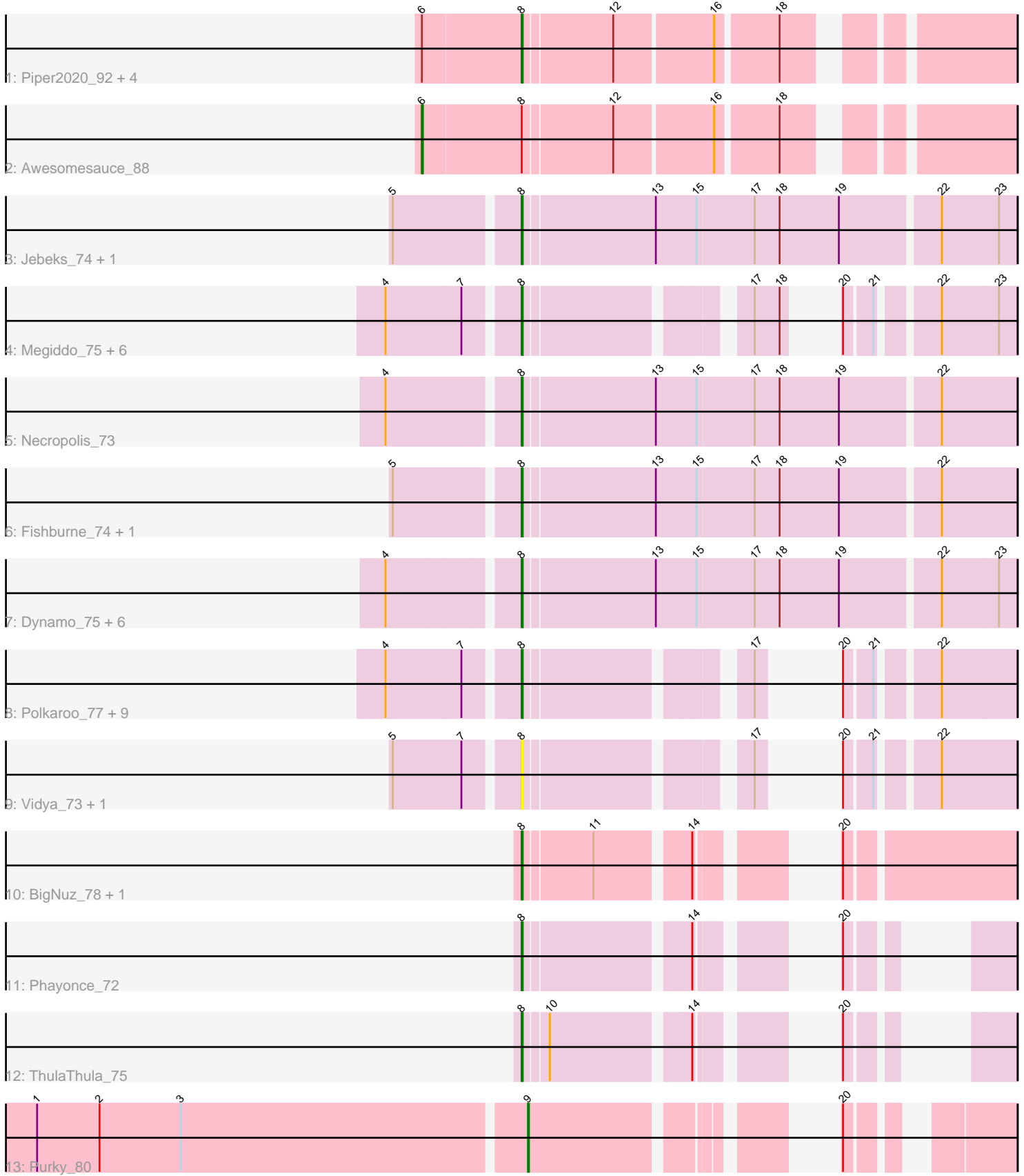


# Pham 168348



Note: Tracks are now grouped by subcluster and scaled. Switching in subcluster is indicated by changes in track color. Track scale is now set by default to display the region 30 bp upstream of start 1 to 30 bp downstream of the last possible start. If this default region is judged to be packed too tightly with annotated starts, the track will be further scaled to only show that region of the ORF with annotated starts. This action will be indicated by adding "Zoomed" to the title. For starts, yellow indicates the location of called starts comprised solely of Glimmer/GeneMark auto-annotations, green indicates the location of called starts with at least 1 manual gene annotation.

## Pham 168348 Report

This analysis was run 07/09/24 on database version 566.

Pham number 168348 has 42 members, 5 are drafts.

Phages represented in each track:

- Track 1 : Piper2020\_92, ChickenDinner\_91, TootsiePop\_87, Misha28\_87, DocMcStuffins\_84
- Track 2 : Awesomesauce\_88
- Track 3 : Jebeks\_74, Langerak\_74
- Track 4 : Megiddo\_75, KilKor\_76, Phalm\_76, StressBall\_75, CactusJack\_76, Glaske\_75, Willsammy\_77
- Track 5 : Necropolis\_73
- Track 6 : Fishburne\_74, Zilizebeth\_80
- Track 7 : Dynamo\_75, Bogie\_78, HUHilltop\_78, Phineas\_75, Pygmy\_79, GreaseLightnin\_77, Shipwreck\_78
- Track 8 : Polkaroo\_77, Donovan\_75, Mangethe\_78, Venti\_76, Juniormint\_71, Phegasus\_78, Techage\_76, Majeke\_78, Arib1\_75, Bartholomew\_74
- Track 9 : Vidya\_73, Kari\_74
- Track 10 : BigNuz\_78, Nazo\_79
- Track 11 : Phayonce\_72
- Track 12 : ThulaThula\_75
- Track 13 : Purky\_80

### ***Summary of Final Annotations (See graph section above for start numbers):***

The start number called the most often in the published annotations is 8, it was called in 35 of the 37 non-draft genes in the pham.

Genes that call this "Most Annotated" start:

- Arib1\_75, Bartholomew\_74, BigNuz\_78, Bogie\_78, CactusJack\_76, ChickenDinner\_91, DocMcStuffins\_84, Donovan\_75, Dynamo\_75, Fishburne\_74, Glaske\_75, GreaseLightnin\_77, HUHilltop\_78, Jebeks\_74, Juniormint\_71, Kari\_74, KilKor\_76, Langerak\_74, Majeke\_78, Mangethe\_78, Megiddo\_75, Misha28\_87, Nazo\_79, Necropolis\_73, Phalm\_76, Phayonce\_72, Phegasus\_78, Phineas\_75, Piper2020\_92, Polkaroo\_77, Pygmy\_79, Shipwreck\_78, StressBall\_75, Techage\_76, ThulaThula\_75, TootsiePop\_87, Venti\_76, Vidya\_73, Willsammy\_77, Zilizebeth\_80,

Genes that have the "Most Annotated" start but do not call it:

- Awesomesauce\_88,

Genes that do not have the "Most Annotated" start:

- Purky\_80,

### Summary by start number:

Start 6:

- Found in 6 of 42 ( 14.3% ) of genes in pham
- Manual Annotations of this start: 1 of 37
- Called 16.7% of time when present
- Phage (with cluster) where this start called: Awesomesauce\_88 (F1),

Start 8:

- Found in 41 of 42 ( 97.6% ) of genes in pham
- Manual Annotations of this start: 35 of 37
- Called 97.6% of time when present
- Phage (with cluster) where this start called: Arib1\_75 (P1), Bartholomew\_74 (P1), BigNuz\_78 (P4), Bogie\_78 (P1), CactusJack\_76 (P1), ChickenDinner\_91 (F1), DocMcStuffins\_84 (F1), Donovan\_75 (P1), Dynamo\_75 (P1), Fishburne\_74 (P1), Glaske\_75 (P1), GreaseLightnin\_77 (P1), HUHilltop\_78 (P1), Jebeks\_74 (P1), Juniormint\_71 (P1), Kari\_74 (P1), KilKor\_76 (P1), Langerak\_74 (P1), Majeke\_78 (P1), Mangethe\_78 (P1), Megiddo\_75 (P1), Misha28\_87 (F1), Nazo\_79 (P4), Necropolis\_73 (P1), Phalm\_76 (P1), Phayonce\_72 (P5), Phegasus\_78 (P1), Phineas\_75 (P1), Piper2020\_92 (F1), Polkaroo\_77 (P1), Pygmy\_79 (P1), Shipwreck\_78 (P1), StressBall\_75 (P1), Techage\_76 (P1), ThulaThula\_75 (P5), TootsiePop\_87 (F1), Venti\_76 (P1), Vidya\_73 (P1), Willsammy\_77 (P1), Zilizebeth\_80 (P1),

Start 9:

- Found in 1 of 42 ( 2.4% ) of genes in pham
- Manual Annotations of this start: 1 of 37
- Called 100.0% of time when present
- Phage (with cluster) where this start called: Purky\_80 (P6),

### Summary by clusters:

There are 5 clusters represented in this pham: F1, P1, P6, P4, P5,

Info for manual annotations of cluster F1:

- Start number 6 was manually annotated 1 time for cluster F1.
- Start number 8 was manually annotated 3 times for cluster F1.

Info for manual annotations of cluster P1:

- Start number 8 was manually annotated 28 times for cluster P1.

Info for manual annotations of cluster P4:

- Start number 8 was manually annotated 2 times for cluster P4.

Info for manual annotations of cluster P5:

- Start number 8 was manually annotated 2 times for cluster P5.

Info for manual annotations of cluster P6:

- Start number 9 was manually annotated 1 time for cluster P6.

**Gene Information:**

Gene: Arib1\_75 Start: 45198, Stop: 45536, Start Num: 8

Candidate Starts for Arib1\_75:

(4, 45081), (7, 45153), (Start: 8 @45198 has 35 MA's), (17, 45381), (20, 45393), (21, 45417), (22, 45465),

Gene: Awesomesauce\_88 Start: 53108, Stop: 53605, Start Num: 6

Candidate Starts for Awesomesauce\_88:

(Start: 6 @53108 has 1 MA's), (Start: 8 @53201 has 35 MA's), (12, 53282), (16, 53372), (18, 53426),

Gene: Bartholomew\_74 Start: 44950, Stop: 45288, Start Num: 8

Candidate Starts for Bartholomew\_74:

(4, 44833), (7, 44905), (Start: 8 @44950 has 35 MA's), (17, 45133), (20, 45145), (21, 45169), (22, 45217),

Gene: BigNuz\_78 Start: 47050, Stop: 47418, Start Num: 8

Candidate Starts for BigNuz\_78:

(Start: 8 @47050 has 35 MA's), (11, 47113), (14, 47194), (20, 47266),

Gene: Bogie\_78 Start: 46985, Stop: 47443, Start Num: 8

Candidate Starts for Bogie\_78:

(4, 46868), (Start: 8 @46985 has 35 MA's), (13, 47108), (15, 47147), (17, 47201), (18, 47225), (19, 47282), (22, 47372), (23, 47426),

Gene: CactusJack\_76 Start: 46666, Stop: 47025, Start Num: 8

Candidate Starts for CactusJack\_76:

(4, 46549), (7, 46621), (Start: 8 @46666 has 35 MA's), (17, 46849), (18, 46873), (20, 46882), (21, 46906), (22, 46954), (23, 47008),

Gene: ChickenDinner\_91 Start: 52965, Stop: 53369, Start Num: 8

Candidate Starts for ChickenDinner\_91:

(Start: 6 @52872 has 1 MA's), (Start: 8 @52965 has 35 MA's), (12, 53046), (16, 53136), (18, 53190),

Gene: DocMcStuffins\_84 Start: 54595, Stop: 54999, Start Num: 8

Candidate Starts for DocMcStuffins\_84:

(Start: 6 @54502 has 1 MA's), (Start: 8 @54595 has 35 MA's), (12, 54676), (16, 54766), (18, 54820),

Gene: Donovan\_75 Start: 45628, Stop: 45966, Start Num: 8

Candidate Starts for Donovan\_75:

(4, 45511), (7, 45583), (Start: 8 @45628 has 35 MA's), (17, 45811), (20, 45823), (21, 45847), (22, 45895),

Gene: Dynamo\_75 Start: 45019, Stop: 45477, Start Num: 8

Candidate Starts for Dynamo\_75:

(4, 44902), (Start: 8 @45019 has 35 MA's), (13, 45142), (15, 45181), (17, 45235), (18, 45259), (19, 45316), (22, 45406), (23, 45460),

Gene: Fishburne\_74 Start: 45455, Stop: 45913, Start Num: 8

Candidate Starts for Fishburne\_74:

(5, 45344), (Start: 8 @45455 has 35 MA's), (13, 45578), (15, 45617), (17, 45671), (18, 45695), (19, 45752), (22, 45842),

Gene: Glaske\_75 Start: 46666, Stop: 47025, Start Num: 8

Candidate Starts for Glaske\_75:

(4, 46549), (7, 46621), (Start: 8 @46666 has 35 MA's), (17, 46849), (18, 46873), (20, 46882), (21, 46906), (22, 46954), (23, 47008),

Gene: GreaseLightnin\_77 Start: 46770, Stop: 47228, Start Num: 8

Candidate Starts for GreaseLightnin\_77:

(4, 46653), (Start: 8 @46770 has 35 MA's), (13, 46893), (15, 46932), (17, 46986), (18, 47010), (19, 47067), (22, 47157), (23, 47211),

Gene: HUHilltop\_78 Start: 45242, Stop: 45700, Start Num: 8

Candidate Starts for HUHilltop\_78:

(4, 45125), (Start: 8 @45242 has 35 MA's), (13, 45365), (15, 45404), (17, 45458), (18, 45482), (19, 45539), (22, 45629), (23, 45683),

Gene: Jebeks\_74 Start: 43926, Stop: 44384, Start Num: 8

Candidate Starts for Jebeks\_74:

(5, 43815), (Start: 8 @43926 has 35 MA's), (13, 44049), (15, 44088), (17, 44142), (18, 44166), (19, 44223), (22, 44313), (23, 44367),

Gene: Juniormint\_71 Start: 44041, Stop: 44379, Start Num: 8

Candidate Starts for Juniormint\_71:

(4, 43924), (7, 43996), (Start: 8 @44041 has 35 MA's), (17, 44224), (20, 44236), (21, 44260), (22, 44308),

Gene: Kari\_74 Start: 45989, Stop: 46327, Start Num: 8

Candidate Starts for Kari\_74:

(5, 45878), (7, 45944), (Start: 8 @45989 has 35 MA's), (17, 46172), (20, 46184), (21, 46208), (22, 46256),

Gene: KilKor\_76 Start: 47359, Stop: 47718, Start Num: 8

Candidate Starts for KilKor\_76:

(4, 47242), (7, 47314), (Start: 8 @47359 has 35 MA's), (17, 47542), (18, 47566), (20, 47575), (21, 47599), (22, 47647), (23, 47701),

Gene: Langerak\_74 Start: 45433, Stop: 45891, Start Num: 8

Candidate Starts for Langerak\_74:

(5, 45322), (Start: 8 @45433 has 35 MA's), (13, 45556), (15, 45595), (17, 45649), (18, 45673), (19, 45730), (22, 45820), (23, 45874),

Gene: Majeke\_78 Start: 46077, Stop: 46415, Start Num: 8

Candidate Starts for Majeke\_78:

(4, 45960), (7, 46032), (Start: 8 @46077 has 35 MA's), (17, 46260), (20, 46272), (21, 46296), (22, 46344),

Gene: Mangethe\_78 Start: 46077, Stop: 46415, Start Num: 8

Candidate Starts for Mangethe\_78:

(4, 45960), (7, 46032), (Start: 8 @46077 has 35 MA's), (17, 46260), (20, 46272), (21, 46296), (22, 46344),

Gene: Megiddo\_75 Start: 47227, Stop: 47586, Start Num: 8  
Candidate Starts for Megiddo\_75:  
(4, 47110), (7, 47182), (Start: 8 @47227 has 35 MA's), (17, 47410), (18, 47434), (20, 47443), (21, 47467), (22, 47515), (23, 47569),

Gene: Misha28\_87 Start: 53900, Stop: 54304, Start Num: 8  
Candidate Starts for Misha28\_87:  
(Start: 6 @53807 has 1 MA's), (Start: 8 @53900 has 35 MA's), (12, 53981), (16, 54071), (18, 54125),

Gene: Nazo\_79 Start: 46936, Stop: 47304, Start Num: 8  
Candidate Starts for Nazo\_79:  
(Start: 8 @46936 has 35 MA's), (11, 46999), (14, 47080), (20, 47152),

Gene: Necropolis\_73 Start: 44609, Stop: 45067, Start Num: 8  
Candidate Starts for Necropolis\_73:  
(4, 44492), (Start: 8 @44609 has 35 MA's), (13, 44732), (15, 44771), (17, 44825), (18, 44849), (19, 44906), (22, 44996),

Gene: Phalm\_76 Start: 46657, Stop: 47016, Start Num: 8  
Candidate Starts for Phalm\_76:  
(4, 46540), (7, 46612), (Start: 8 @46657 has 35 MA's), (17, 46840), (18, 46864), (20, 46873), (21, 46897), (22, 46945), (23, 46999),

Gene: Phayonce\_72 Start: 47098, Stop: 47397, Start Num: 8  
Candidate Starts for Phayonce\_72:  
(Start: 8 @47098 has 35 MA's), (14, 47242), (20, 47314),

Gene: Phegasus\_78 Start: 46044, Stop: 46382, Start Num: 8  
Candidate Starts for Phegasus\_78:  
(4, 45927), (7, 45999), (Start: 8 @46044 has 35 MA's), (17, 46227), (20, 46239), (21, 46263), (22, 46311),

Gene: Phineas\_75 Start: 45576, Stop: 46034, Start Num: 8  
Candidate Starts for Phineas\_75:  
(4, 45459), (Start: 8 @45576 has 35 MA's), (13, 45699), (15, 45738), (17, 45792), (18, 45816), (19, 45873), (22, 45963), (23, 46017),

Gene: Piper2020\_92 Start: 54148, Stop: 54552, Start Num: 8  
Candidate Starts for Piper2020\_92:  
(Start: 6 @54055 has 1 MA's), (Start: 8 @54148 has 35 MA's), (12, 54229), (16, 54319), (18, 54373),

Gene: Polkaroo\_77 Start: 47550, Stop: 47888, Start Num: 8  
Candidate Starts for Polkaroo\_77:  
(4, 47433), (7, 47505), (Start: 8 @47550 has 35 MA's), (17, 47733), (20, 47745), (21, 47769), (22, 47817),

Gene: Purky\_80 Start: 48824, Stop: 49156, Start Num: 9  
Candidate Starts for Purky\_80:  
(1, 48365), (2, 48425), (3, 48503), (Start: 9 @48824 has 1 MA's), (20, 49037),

Gene: Pygmy\_79 Start: 46958, Stop: 47416, Start Num: 8  
Candidate Starts for Pygmy\_79:

(4, 46841), (Start: 8 @46958 has 35 MA's), (13, 47081), (15, 47120), (17, 47174), (18, 47198), (19, 47255), (22, 47345), (23, 47399),

Gene: Shipwreck\_78 Start: 47016, Stop: 47474, Start Num: 8

Candidate Starts for Shipwreck\_78:

(4, 46899), (Start: 8 @47016 has 35 MA's), (13, 47139), (15, 47178), (17, 47232), (18, 47256), (19, 47313), (22, 47403), (23, 47457),

Gene: StressBall\_75 Start: 46359, Stop: 46718, Start Num: 8

Candidate Starts for StressBall\_75:

(4, 46242), (7, 46314), (Start: 8 @46359 has 35 MA's), (17, 46542), (18, 46566), (20, 46575), (21, 46599), (22, 46647), (23, 46701),

Gene: Techage\_76 Start: 45560, Stop: 45898, Start Num: 8

Candidate Starts for Techage\_76:

(4, 45443), (7, 45515), (Start: 8 @45560 has 35 MA's), (17, 45743), (20, 45755), (21, 45779), (22, 45827),

Gene: ThulaThula\_75 Start: 48307, Stop: 48606, Start Num: 8

Candidate Starts for ThulaThula\_75:

(Start: 8 @48307 has 35 MA's), (10, 48328), (14, 48451), (20, 48523),

Gene: TootsiePop\_87 Start: 53900, Stop: 54304, Start Num: 8

Candidate Starts for TootsiePop\_87:

(Start: 6 @53807 has 1 MA's), (Start: 8 @53900 has 35 MA's), (12, 53981), (16, 54071), (18, 54125),

Gene: Venti\_76 Start: 44950, Stop: 45288, Start Num: 8

Candidate Starts for Venti\_76:

(4, 44833), (7, 44905), (Start: 8 @44950 has 35 MA's), (17, 45133), (20, 45145), (21, 45169), (22, 45217),

Gene: Vidya\_73 Start: 44968, Stop: 45306, Start Num: 8

Candidate Starts for Vidya\_73:

(5, 44857), (7, 44923), (Start: 8 @44968 has 35 MA's), (17, 45151), (20, 45163), (21, 45187), (22, 45235),

Gene: Willsammy\_77 Start: 46843, Stop: 47202, Start Num: 8

Candidate Starts for Willsammy\_77:

(4, 46726), (7, 46798), (Start: 8 @46843 has 35 MA's), (17, 47026), (18, 47050), (20, 47059), (21, 47083), (22, 47131), (23, 47185),

Gene: Zilizebeth\_80 Start: 46402, Stop: 46860, Start Num: 8

Candidate Starts for Zilizebeth\_80:

(5, 46291), (Start: 8 @46402 has 35 MA's), (13, 46525), (15, 46564), (17, 46618), (18, 46642), (19, 46699), (22, 46789),