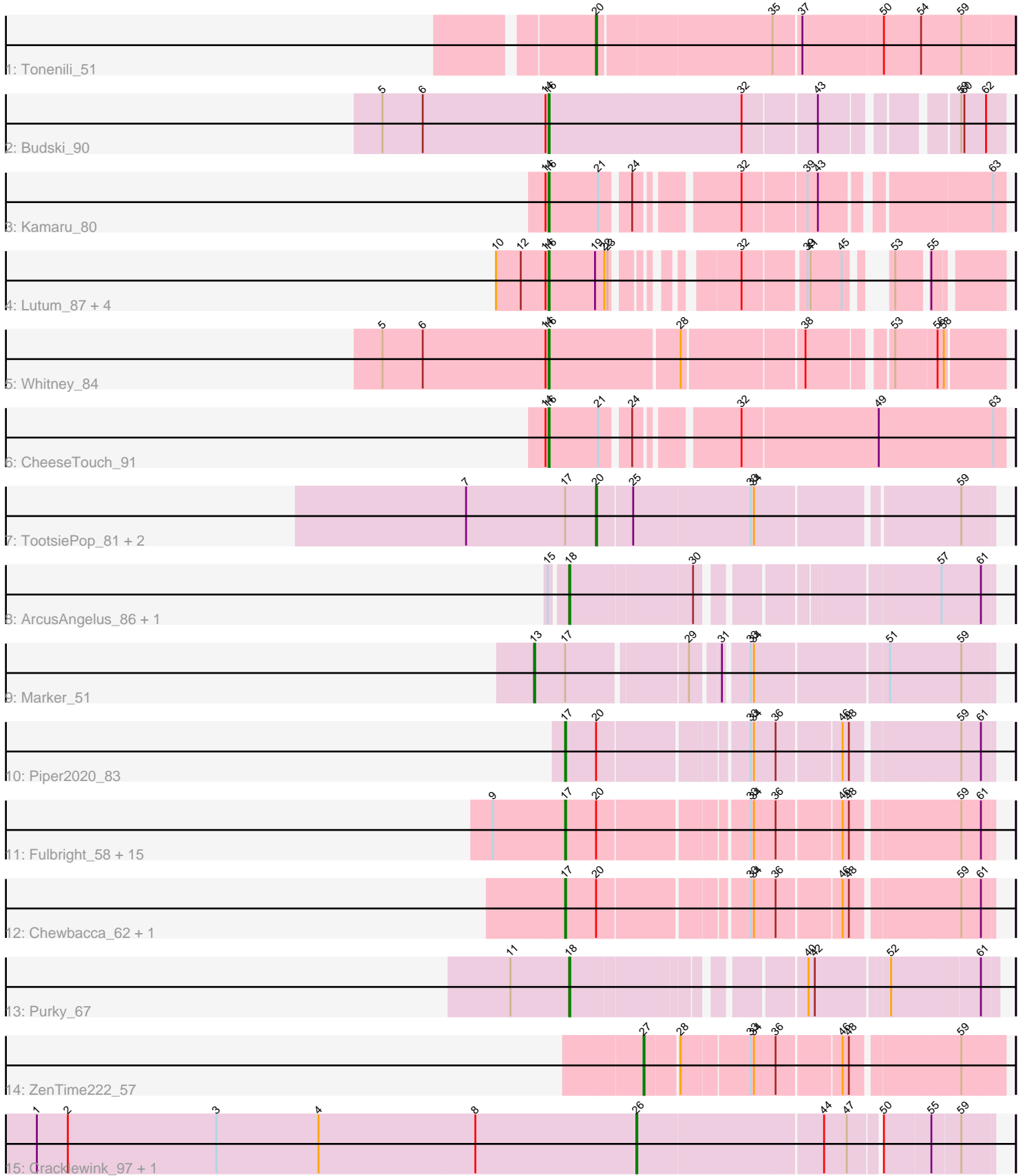


Pham 168361



Note: Tracks are now grouped by subcluster and scaled. Switching in subcluster is indicated by changes in track color. Track scale is now set by default to display the region 30 bp upstream of start 1 to 30 bp downstream of the last possible start. If this default region is judged to be packed too tightly with annotated starts, the track will be further scaled to only show that region of the ORF with annotated starts. This action will be indicated by adding "Zoomed" to the title. For starts, yellow indicates the location of called starts comprised solely of Glimmer/GeneMark auto-annotations, green indicates the location of called starts with at least 1 manual gene annotation.

Pham 168361 Report

This analysis was run 07/09/24 on database version 566.

Pham number 168361 has 39 members, 2 are drafts.

Phages represented in each track:

- Track 1 : Tonenili_51
- Track 2 : Budski_90
- Track 3 : Kamaru_80
- Track 4 : Lutum_87, Getalong_89, BENtherdunthat_86, Phabuloso_93, Kenna_81
- Track 5 : Whitney_84
- Track 6 : CheeseTouch_91
- Track 7 : TootsiePop_81, Misha28_81, Awesomesauce_81
- Track 8 : ArcusAngelus_86, Chevrolet_92
- Track 9 : Marker_51
- Track 10 : Piper2020_83
- Track 11 : Fulbright_58, Xerxes_60, Melville_65, Duplicity_58, Frankie_78, Philonius_60, Schnauzer_61, Pipsqueaks_61, Silvy_56, Parmesanjohn_60, Smurph_60, Aggie_56, Gex_61, Silvafighter_61, Phloss_58, Carcharodon_60
- Track 12 : Chewbacca_62, FirstPlacePfu_61
- Track 13 : Purky_67
- Track 14 : ZenTime222_57
- Track 15 : Cracklewink_97, Bipper_97

Summary of Final Annotations (See graph section above for start numbers):

The start number called the most often in the published annotations is 17, it was called in 18 of the 37 non-draft genes in the pham.

Genes that call this "Most Annotated" start:

- Aggie_56, Carcharodon_60, Chewbacca_62, Duplicity_58, FirstPlacePfu_61, Frankie_78, Fulbright_58, Gex_61, Melville_65, Parmesanjohn_60, Philonius_60, Phloss_58, Piper2020_83, Pipsqueaks_61, Schnauzer_61, Silvafighter_61, Silvy_56, Smurph_60, Xerxes_60,

Genes that have the "Most Annotated" start but do not call it:

- Awesomesauce_81, Marker_51, Misha28_81, TootsiePop_81,

Genes that do not have the "Most Annotated" start:

- ArcusAngelus_86, BENtherdunthat_86, Bipper_97, Budski_90, CheeseTouch_91, Chevrolet_92, Cracklewink_97, Getalong_89, Kamaru_80, Kenna_81, Lutum_87, Phabuloso_93, Purky_67, Tonenili_51, Whitney_84, ZenTime222_57,

Summary by start number:

Start 13:

- Found in 1 of 39 (2.6%) of genes in pham
- Manual Annotations of this start: 1 of 37
- Called 100.0% of time when present
- Phage (with cluster) where this start called: Marker_51 (F1),

Start 16:

- Found in 9 of 39 (23.1%) of genes in pham
- Manual Annotations of this start: 9 of 37
- Called 100.0% of time when present
- Phage (with cluster) where this start called: BENtherdunthat_86 (DN1), Budski_90 (DN), CheeseTouch_91 (DN1), Getalong_89 (DN1), Kamaru_80 (DN1), Kenna_81 (DN1), Lutum_87 (DN1), Phabuloso_93 (DN1), Whitney_84 (DN1),

Start 17:

- Found in 23 of 39 (59.0%) of genes in pham
- Manual Annotations of this start: 18 of 37
- Called 82.6% of time when present
- Phage (with cluster) where this start called: Aggie_56 (N), Carcharodon_60 (N), Chewbacca_62 (N), Duplicity_58 (N), FirstPlacePfu_61 (P1), Frankie_78 (F1), Fulbright_58 (N), Gex_61 (N), Melville_65 (N), Parmesanjohn_60 (N), Philonius_60 (N), Phloss_58 (N), Piper2020_83 (F1), Pipsqueaks_61 (N), Schnauzer_61 (N), Silvafighter_61 (N), Silvy_56 (N), Smurph_60 (N), Xerxes_60 (N),

Start 18:

- Found in 3 of 39 (7.7%) of genes in pham
- Manual Annotations of this start: 2 of 37
- Called 100.0% of time when present
- Phage (with cluster) where this start called: ArcusAngelus_86 (F1), Chevrolet_92 (F1), Purky_67 (P6),

Start 20:

- Found in 23 of 39 (59.0%) of genes in pham
- Manual Annotations of this start: 4 of 37
- Called 17.4% of time when present
- Phage (with cluster) where this start called: Awesomesauce_81 (F1), Misha28_81 (F1), Tonenili_51 (C1), TootsiePop_81 (F1),

Start 26:

- Found in 2 of 39 (5.1%) of genes in pham
- Manual Annotations of this start: 2 of 37
- Called 100.0% of time when present
- Phage (with cluster) where this start called: Bipper_97 (Y), Cracklewink_97 (Y),

Start 27:

- Found in 1 of 39 (2.6%) of genes in pham
- Manual Annotations of this start: 1 of 37

- Called 100.0% of time when present
- Phage (with cluster) where this start called: ZenTime222_57 (T),

Summary by clusters:

There are 9 clusters represented in this pham: DN, F1, P1, P6, N, DN1, T, Y, C1,

Info for manual annotations of cluster C1:

- Start number 20 was manually annotated 1 time for cluster C1.

Info for manual annotations of cluster DN:

- Start number 16 was manually annotated 1 time for cluster DN.

Info for manual annotations of cluster DN1:

- Start number 16 was manually annotated 8 times for cluster DN1.

Info for manual annotations of cluster F1:

- Start number 13 was manually annotated 1 time for cluster F1.
- Start number 17 was manually annotated 2 times for cluster F1.
- Start number 18 was manually annotated 1 time for cluster F1.
- Start number 20 was manually annotated 3 times for cluster F1.

Info for manual annotations of cluster N:

- Start number 17 was manually annotated 15 times for cluster N.

Info for manual annotations of cluster P1:

- Start number 17 was manually annotated 1 time for cluster P1.

Info for manual annotations of cluster P6:

- Start number 18 was manually annotated 1 time for cluster P6.

Info for manual annotations of cluster T:

- Start number 27 was manually annotated 1 time for cluster T.

Info for manual annotations of cluster Y:

- Start number 26 was manually annotated 2 times for cluster Y.

Gene Information:

Gene: Aggie_56 Start: 38873, Stop: 39247, Start Num: 17

Candidate Starts for Aggie_56:

(9, 38804), (Start: 17 @38873 has 18 MA's), (Start: 20 @38903 has 4 MA's), (33, 39035), (34, 39038), (36, 39059), (46, 39116), (48, 39122), (59, 39218), (61, 39236),

Gene: ArcusAngelus_86 Start: 50829, Stop: 51188, Start Num: 18

Candidate Starts for ArcusAngelus_86:

(15, 50814), (Start: 18 @50829 has 2 MA's), (30, 50943), (57, 51141), (61, 51177),

Gene: Awesomesauce_81 Start: 49905, Stop: 50261, Start Num: 20

Candidate Starts for Awesomesauce_81:

(7, 49779), (Start: 17 @49875 has 18 MA's), (Start: 20 @49905 has 4 MA's), (25, 49938), (33, 50049), (34, 50052), (59, 50232),

Gene: BENtherdunthat_86 Start: 47569, Stop: 47898, Start Num: 16

Candidate Starts for BENtherdunthat_86:

(10, 47518), (12, 47542), (14, 47566), (Start: 16 @47569 has 9 MA's), (19, 47614), (22, 47623), (23, 47626), (32, 47707), (39, 47761), (41, 47764), (45, 47794), (53, 47812), (55, 47839),

Gene: Bipper_97 Start: 61646, Stop: 61966, Start Num: 26

Candidate Starts for Bipper_97:

(1, 61067), (2, 61097), (3, 61241), (4, 61340), (8, 61490), (Start: 26 @61646 has 2 MA's), (44, 61820), (47, 61841), (50, 61868), (55, 61910), (59, 61937),

Gene: Budski_90 Start: 49904, Stop: 50302, Start Num: 16

Candidate Starts for Budski_90:

(5, 49745), (6, 49784), (14, 49901), (Start: 16 @49904 has 9 MA's), (32, 50090), (43, 50156), (59, 50261), (60, 50264), (62, 50285),

Gene: Carcharodon_60 Start: 38217, Stop: 38591, Start Num: 17

Candidate Starts for Carcharodon_60:

(9, 38148), (Start: 17 @38217 has 18 MA's), (Start: 20 @38247 has 4 MA's), (33, 38379), (34, 38382), (36, 38403), (46, 38460), (48, 38466), (59, 38562), (61, 38580),

Gene: CheeseTouch_91 Start: 45223, Stop: 45627, Start Num: 16

Candidate Starts for CheeseTouch_91:

(14, 45220), (Start: 16 @45223 has 9 MA's), (21, 45271), (24, 45295), (32, 45379), (49, 45508), (63, 45616),

Gene: Chevrolet_92 Start: 50830, Stop: 51189, Start Num: 18

Candidate Starts for Chevrolet_92:

(15, 50815), (Start: 18 @50830 has 2 MA's), (30, 50944), (57, 51142), (61, 51178),

Gene: Chewbacca_62 Start: 38112, Stop: 38486, Start Num: 17

Candidate Starts for Chewbacca_62:

(Start: 17 @38112 has 18 MA's), (Start: 20 @38142 has 4 MA's), (33, 38274), (34, 38277), (36, 38298), (46, 38355), (48, 38361), (59, 38457), (61, 38475),

Gene: Cracklewink_97 Start: 60881, Stop: 61201, Start Num: 26

Candidate Starts for Cracklewink_97:

(1, 60302), (2, 60332), (3, 60476), (4, 60575), (8, 60725), (Start: 26 @60881 has 2 MA's), (44, 61055), (47, 61076), (50, 61103), (55, 61145), (59, 61172),

Gene: Duplicity_58 Start: 37474, Stop: 37848, Start Num: 17

Candidate Starts for Duplicity_58:

(9, 37405), (Start: 17 @37474 has 18 MA's), (Start: 20 @37504 has 4 MA's), (33, 37636), (34, 37639), (36, 37660), (46, 37717), (48, 37723), (59, 37819), (61, 37837),

Gene: FirstPlacePfu_61 Start: 38017, Stop: 38391, Start Num: 17

Candidate Starts for FirstPlacePfu_61:

(Start: 17 @38017 has 18 MA's), (Start: 20 @38047 has 4 MA's), (33, 38179), (34, 38182), (36, 38203), (46, 38260), (48, 38266), (59, 38362), (61, 38380),

Gene: Frankie_78 Start: 46606, Stop: 46980, Start Num: 17

Candidate Starts for Frankie_78:

(9, 46537), (Start: 17 @46606 has 18 MA's), (Start: 20 @46636 has 4 MA's), (33, 46768), (34, 46771), (36, 46792), (46, 46849), (48, 46855), (59, 46951), (61, 46969),

Gene: Fulbright_58 Start: 36911, Stop: 37285, Start Num: 17

Candidate Starts for Fulbright_58:

(9, 36842), (Start: 17 @36911 has 18 MA's), (Start: 20 @36941 has 4 MA's), (33, 37073), (34, 37076), (36, 37097), (46, 37154), (48, 37160), (59, 37256), (61, 37274),

Gene: Getalong_89 Start: 50024, Stop: 50353, Start Num: 16

Candidate Starts for Getalong_89:

(10, 49973), (12, 49997), (14, 50021), (Start: 16 @50024 has 9 MA's), (19, 50069), (22, 50078), (23, 50081), (32, 50162), (39, 50216), (41, 50219), (45, 50249), (53, 50267), (55, 50294),

Gene: Gex_61 Start: 38233, Stop: 38607, Start Num: 17

Candidate Starts for Gex_61:

(9, 38164), (Start: 17 @38233 has 18 MA's), (Start: 20 @38263 has 4 MA's), (33, 38395), (34, 38398), (36, 38419), (46, 38476), (48, 38482), (59, 38578), (61, 38596),

Gene: Kamaru_80 Start: 46524, Stop: 46901, Start Num: 16

Candidate Starts for Kamaru_80:

(14, 46521), (Start: 16 @46524 has 9 MA's), (21, 46572), (24, 46596), (32, 46680), (39, 46737), (43, 46746), (63, 46890),

Gene: Kenna_81 Start: 46842, Stop: 47171, Start Num: 16

Candidate Starts for Kenna_81:

(10, 46791), (12, 46815), (14, 46839), (Start: 16 @46842 has 9 MA's), (19, 46887), (22, 46896), (23, 46899), (32, 46980), (39, 47034), (41, 47037), (45, 47067), (53, 47085), (55, 47112),

Gene: Lutum_87 Start: 48004, Stop: 48333, Start Num: 16

Candidate Starts for Lutum_87:

(10, 47953), (12, 47977), (14, 48001), (Start: 16 @48004 has 9 MA's), (19, 48049), (22, 48058), (23, 48061), (32, 48142), (39, 48196), (41, 48199), (45, 48229), (53, 48247), (55, 48274),

Gene: Marker_51 Start: 36567, Stop: 36971, Start Num: 13

Candidate Starts for Marker_51:

(Start: 13 @36567 has 1 MA's), (Start: 17 @36597 has 18 MA's), (29, 36705), (31, 36729), (33, 36750), (34, 36753), (51, 36873), (59, 36942),

Gene: Melville_65 Start: 37788, Stop: 38162, Start Num: 17

Candidate Starts for Melville_65:

(9, 37719), (Start: 17 @37788 has 18 MA's), (Start: 20 @37818 has 4 MA's), (33, 37950), (34, 37953), (36, 37974), (46, 38031), (48, 38037), (59, 38133), (61, 38151),

Gene: Misha28_81 Start: 50604, Stop: 50960, Start Num: 20

Candidate Starts for Misha28_81:

(7, 50478), (Start: 17 @50574 has 18 MA's), (Start: 20 @50604 has 4 MA's), (25, 50637), (33, 50748), (34, 50751), (59, 50931),

Gene: Parmesanjohn_60 Start: 38237, Stop: 38611, Start Num: 17

Candidate Starts for Parmesanjohn_60:

(9, 38168), (Start: 17 @38237 has 18 MA's), (Start: 20 @38267 has 4 MA's), (33, 38399), (34, 38402), (36, 38423), (46, 38480), (48, 38486), (59, 38582), (61, 38600),

Gene: Phabuloso_93 Start: 49496, Stop: 49825, Start Num: 16

Candidate Starts for Phabuloso_93:

(10, 49445), (12, 49469), (14, 49493), (Start: 16 @49496 has 9 MA's), (19, 49541), (22, 49550), (23, 49553), (32, 49634), (39, 49688), (41, 49691), (45, 49721), (53, 49739), (55, 49766),

Gene: Philonius_60 Start: 38402, Stop: 38776, Start Num: 17

Candidate Starts for Philonius_60:

(9, 38333), (Start: 17 @38402 has 18 MA's), (Start: 20 @38432 has 4 MA's), (33, 38564), (34, 38567), (36, 38588), (46, 38645), (48, 38651), (59, 38747), (61, 38765),

Gene: Phloss_58 Start: 37644, Stop: 38018, Start Num: 17

Candidate Starts for Phloss_58:

(9, 37575), (Start: 17 @37644 has 18 MA's), (Start: 20 @37674 has 4 MA's), (33, 37806), (34, 37809), (36, 37830), (46, 37887), (48, 37893), (59, 37989), (61, 38007),

Gene: Piper2020_83 Start: 51001, Stop: 51375, Start Num: 17

Candidate Starts for Piper2020_83:

(Start: 17 @51001 has 18 MA's), (Start: 20 @51031 has 4 MA's), (33, 51163), (34, 51166), (36, 51187), (46, 51244), (48, 51250), (59, 51346), (61, 51364),

Gene: Pipsqueaks_61 Start: 38215, Stop: 38589, Start Num: 17

Candidate Starts for Pipsqueaks_61:

(9, 38146), (Start: 17 @38215 has 18 MA's), (Start: 20 @38245 has 4 MA's), (33, 38377), (34, 38380), (36, 38401), (46, 38458), (48, 38464), (59, 38560), (61, 38578),

Gene: Purky_67 Start: 42925, Stop: 43284, Start Num: 18

Candidate Starts for Purky_67:

(11, 42868), (Start: 18 @42925 has 2 MA's), (40, 43117), (42, 43123), (52, 43189), (61, 43270),

Gene: Schnauzer_61 Start: 38237, Stop: 38611, Start Num: 17

Candidate Starts for Schnauzer_61:

(9, 38168), (Start: 17 @38237 has 18 MA's), (Start: 20 @38267 has 4 MA's), (33, 38399), (34, 38402), (36, 38423), (46, 38480), (48, 38486), (59, 38582), (61, 38600),

Gene: Silvafighter_61 Start: 37780, Stop: 38154, Start Num: 17

Candidate Starts for Silvafighter_61:

(9, 37711), (Start: 17 @37780 has 18 MA's), (Start: 20 @37810 has 4 MA's), (33, 37942), (34, 37945), (36, 37966), (46, 38023), (48, 38029), (59, 38125), (61, 38143),

Gene: Silvy_56 Start: 38873, Stop: 39247, Start Num: 17

Candidate Starts for Silvy_56:

(9, 38804), (Start: 17 @38873 has 18 MA's), (Start: 20 @38903 has 4 MA's), (33, 39035), (34, 39038), (36, 39059), (46, 39116), (48, 39122), (59, 39218), (61, 39236),

Gene: Smurph_60 Start: 38237, Stop: 38611, Start Num: 17

Candidate Starts for Smurph_60:

(9, 38168), (Start: 17 @38237 has 18 MA's), (Start: 20 @38267 has 4 MA's), (33, 38399), (34, 38402), (36, 38423), (46, 38480), (48, 38486), (59, 38582), (61, 38600),

Gene: Tonenili_51 Start: 16033, Stop: 16419, Start Num: 20

Candidate Starts for Tonenili_51:

(Start: 20 @16033 has 4 MA's), (35, 16195), (37, 16219), (50, 16294), (54, 16330), (59, 16369),

Gene: TootsiePop_81 Start: 50604, Stop: 50960, Start Num: 20

Candidate Starts for TootsiePop_81:

(7, 50478), (Start: 17 @50574 has 18 MA's), (Start: 20 @50604 has 4 MA's), (25, 50637), (33, 50748), (34, 50751), (59, 50931),

Gene: Whitney_84 Start: 49207, Stop: 49602, Start Num: 16

Candidate Starts for Whitney_84:

(5, 49048), (6, 49087), (14, 49204), (Start: 16 @49207 has 9 MA's), (28, 49327), (38, 49435), (53, 49504), (56, 49543), (58, 49549),

Gene: Xerxes_60 Start: 38234, Stop: 38608, Start Num: 17

Candidate Starts for Xerxes_60:

(9, 38165), (Start: 17 @38234 has 18 MA's), (Start: 20 @38264 has 4 MA's), (33, 38396), (34, 38399), (36, 38420), (46, 38477), (48, 38483), (59, 38579), (61, 38597),

Gene: ZenTime222_57 Start: 39491, Stop: 39808, Start Num: 27

Candidate Starts for ZenTime222_57:

(Start: 27 @39491 has 1 MA's), (28, 39521), (33, 39584), (34, 39587), (36, 39608), (46, 39665), (48, 39671), (59, 39767),