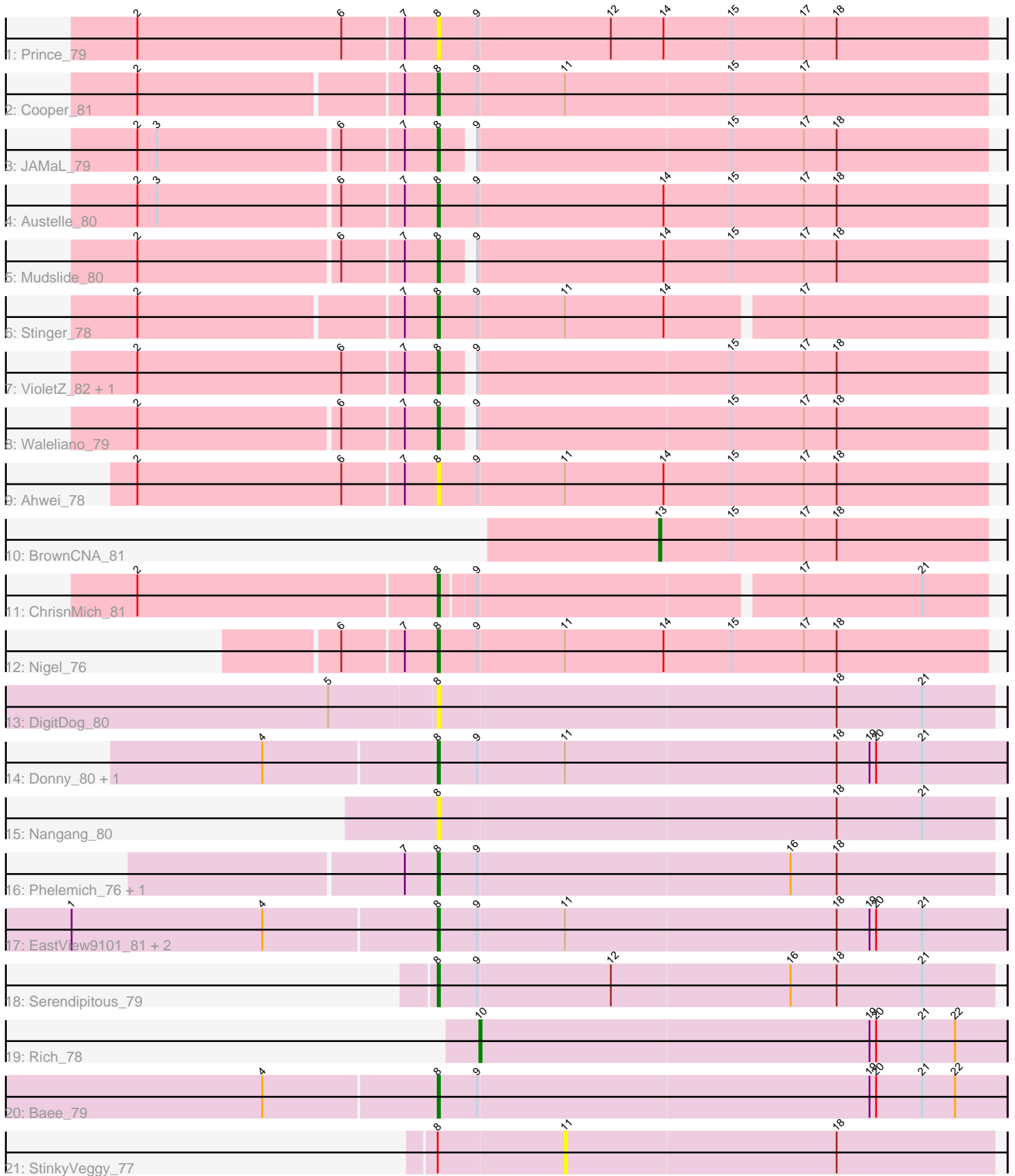


# Pham 168441



Note: Tracks are now grouped by subcluster and scaled. Switching in subcluster is indicated by changes in track color. Track scale is now set by default to display the region 30 bp upstream of start 1 to 30 bp downstream of the last possible start. If this default region is judged to be packed too tightly with annotated starts, the track will be further scaled to only show that region of the ORF with annotated starts. This action will be indicated by adding "Zoomed" to the title. For starts, yellow indicates the location of called starts comprised solely of Glimmer/GeneMark auto-annotations, green indicates the location of called starts with at least 1 manual gene annotation.

## Pham 168441 Report

This analysis was run 07/09/24 on database version 566.

Pham number 168441 has 26 members, 7 are drafts.

Phages represented in each track:

- Track 1 : Prince\_79
- Track 2 : Cooper\_81
- Track 3 : JAMaL\_79
- Track 4 : Austelle\_80
- Track 5 : Mudslide\_80
- Track 6 : Stinger\_78
- Track 7 : VioletZ\_82, Magpie\_77
- Track 8 : Waleliano\_79
- Track 9 : Ahwei\_78
- Track 10 : BrownCNA\_81
- Track 11 : ChrisnMich\_81
- Track 12 : Nigel\_76
- Track 13 : DigitDog\_80
- Track 14 : Donny\_80, SirJeffery\_78
- Track 15 : Nangang\_80
- Track 16 : Phelemich\_76, Reprobate\_78
- Track 17 : EastView9101\_81, Acadian\_80, Suigeneris\_81
- Track 18 : Serendipitous\_79
- Track 19 : Rich\_78
- Track 20 : Bae\_79
- Track 21 : StinkyVeggy\_77

### ***Summary of Final Annotations (See graph section above for start numbers):***

The start number called the most often in the published annotations is 8, it was called in 17 of the 19 non-draft genes in the pham.

Genes that call this "Most Annotated" start:

- Acadian\_80, Ahwei\_78, Austelle\_80, Bae\_79, ChrisnMich\_81, Cooper\_81, DigitDog\_80, Donny\_80, EastView9101\_81, JAMaL\_79, Magpie\_77, Mudslide\_80, Nangang\_80, Nigel\_76, Phelemich\_76, Prince\_79, Reprobate\_78, Serendipitous\_79, SirJeffery\_78, Stinger\_78, Suigeneris\_81, VioletZ\_82, Waleliano\_79,

Genes that have the "Most Annotated" start but do not call it:

- StinkyVeggy\_77,

Genes that do not have the "Most Annotated" start:

- BrownCNA\_81, Rich\_78,

### **Summary by start number:**

Start 8:

- Found in 24 of 26 ( 92.3% ) of genes in pham
- Manual Annotations of this start: 17 of 19
- Called 95.8% of time when present
- Phage (with cluster) where this start called: Acadian\_80 (B5), Ahwei\_78 (B4), Austelle\_80 (B4), Bae\_79 (B5), ChrisnMich\_81 (B4), Cooper\_81 (B4), DigitDog\_80 (B5), Donny\_80 (B5), EastView9101\_81 (B5), JAMaL\_79 (B4), Magpie\_77 (B4), Mudslide\_80 (B4), Nangang\_80 (B5), Nigel\_76 (B4), Phelemich\_76 (B5), Prince\_79 (B4), Reprobate\_78 (B5), Serendipitous\_79 (B5), SirJeffery\_78 (B5), Stinger\_78 (B4), Suigeneris\_81 (B5), VioletZ\_82 (B4), Waleliano\_79 (B4),

Start 10:

- Found in 1 of 26 ( 3.8% ) of genes in pham
- Manual Annotations of this start: 1 of 19
- Called 100.0% of time when present
- Phage (with cluster) where this start called: Rich\_78 (B5),

Start 11:

- Found in 10 of 26 ( 38.5% ) of genes in pham
- No Manual Annotations of this start.
- Called 10.0% of time when present
- Phage (with cluster) where this start called: StinkyVeggy\_77 (B5),

Start 13:

- Found in 1 of 26 ( 3.8% ) of genes in pham
- Manual Annotations of this start: 1 of 19
- Called 100.0% of time when present
- Phage (with cluster) where this start called: BrownCNA\_81 (B4),

### **Summary by clusters:**

There are 2 clusters represented in this pham: B4, B5,

Info for manual annotations of cluster B4:

- Start number 8 was manually annotated 10 times for cluster B4.
- Start number 13 was manually annotated 1 time for cluster B4.

Info for manual annotations of cluster B5:

- Start number 8 was manually annotated 7 times for cluster B5.
- Start number 10 was manually annotated 1 time for cluster B5.

### **Gene Information:**

Gene: Acadian\_80 Start: 62958, Stop: 62701, Start Num: 8

Candidate Starts for Acadian\_80:

(1, 63123), (4, 63036), (Start: 8 @62958 has 17 MA's), (9, 62940), (11, 62901), (18, 62778), (19, 62763), (20, 62760), (21, 62739),

Gene: Ahwei\_78 Start: 63247, Stop: 62999, Start Num: 8

Candidate Starts for Ahwei\_78:

(2, 63382), (6, 63289), (7, 63262), (Start: 8 @63247 has 17 MA's), (9, 63229), (11, 63190), (14, 63145), (15, 63115), (17, 63082), (18, 63067),

Gene: Austelle\_80 Start: 64860, Stop: 64612, Start Num: 8

Candidate Starts for Austelle\_80:

(2, 64992), (3, 64983), (6, 64902), (7, 64875), (Start: 8 @64860 has 17 MA's), (9, 64842), (14, 64758), (15, 64728), (17, 64695), (18, 64680),

Gene: Bae\_79 Start: 63594, Stop: 63337, Start Num: 8

Candidate Starts for Bae\_79:

(4, 63672), (Start: 8 @63594 has 17 MA's), (9, 63576), (19, 63399), (20, 63396), (21, 63375), (22, 63360),

Gene: BrownCNA\_81 Start: 64179, Stop: 64030, Start Num: 13

Candidate Starts for BrownCNA\_81:

(Start: 13 @64179 has 1 MA's), (15, 64146), (17, 64113), (18, 64098),

Gene: ChrisnMich\_81 Start: 63195, Stop: 62956, Start Num: 8

Candidate Starts for ChrisnMich\_81:

(2, 63330), (Start: 8 @63195 has 17 MA's), (9, 63180), (17, 63039), (21, 62985),

Gene: Cooper\_81 Start: 63632, Stop: 63384, Start Num: 8

Candidate Starts for Cooper\_81:

(2, 63764), (7, 63647), (Start: 8 @63632 has 17 MA's), (9, 63614), (11, 63575), (15, 63500), (17, 63467),

Gene: DigitDog\_80 Start: 63071, Stop: 62820, Start Num: 8

Candidate Starts for DigitDog\_80:

(5, 63119), (Start: 8 @63071 has 17 MA's), (18, 62891), (21, 62852),

Gene: Donny\_80 Start: 62792, Stop: 62535, Start Num: 8

Candidate Starts for Donny\_80:

(4, 62870), (Start: 8 @62792 has 17 MA's), (9, 62774), (11, 62735), (18, 62612), (19, 62597), (20, 62594), (21, 62573),

Gene: EastView9101\_81 Start: 62702, Stop: 62445, Start Num: 8

Candidate Starts for EastView9101\_81:

(1, 62867), (4, 62780), (Start: 8 @62702 has 17 MA's), (9, 62684), (11, 62645), (18, 62522), (19, 62507), (20, 62504), (21, 62483),

Gene: JAMaL\_79 Start: 63728, Stop: 63486, Start Num: 8

Candidate Starts for JAMaL\_79:

(2, 63860), (3, 63851), (6, 63770), (7, 63743), (Start: 8 @63728 has 17 MA's), (9, 63716), (15, 63602), (17, 63569), (18, 63554),

Gene: Magpie\_77 Start: 63847, Stop: 63605, Start Num: 8

Candidate Starts for Magpie\_77:

(2, 63982), (6, 63889), (7, 63862), (Start: 8 @63847 has 17 MA's), (9, 63835), (15, 63721), (17, 63688), (18, 63673),

Gene: Mudslide\_80 Start: 64394, Stop: 64152, Start Num: 8

Candidate Starts for Mudslide\_80:

(2, 64526), (6, 64436), (7, 64409), (Start: 8 @64394 has 17 MA's), (9, 64382), (14, 64298), (15, 64268), (17, 64235), (18, 64220),

Gene: Nangang\_80 Start: 63283, Stop: 63032, Start Num: 8

Candidate Starts for Nangang\_80:

(Start: 8 @63283 has 17 MA's), (18, 63103), (21, 63064),

Gene: Nigel\_76 Start: 62547, Stop: 62299, Start Num: 8

Candidate Starts for Nigel\_76:

(6, 62589), (7, 62562), (Start: 8 @62547 has 17 MA's), (9, 62529), (11, 62490), (14, 62445), (15, 62415), (17, 62382), (18, 62367),

Gene: Phelemich\_76 Start: 62744, Stop: 62493, Start Num: 8

Candidate Starts for Phelemich\_76:

(7, 62759), (Start: 8 @62744 has 17 MA's), (9, 62726), (16, 62585), (18, 62564),

Gene: Prince\_79 Start: 64261, Stop: 64013, Start Num: 8

Candidate Starts for Prince\_79:

(2, 64396), (6, 64303), (7, 64276), (Start: 8 @64261 has 17 MA's), (9, 64243), (12, 64183), (14, 64159), (15, 64129), (17, 64096), (18, 64081),

Gene: Reprobate\_78 Start: 62749, Stop: 62498, Start Num: 8

Candidate Starts for Reprobate\_78:

(7, 62764), (Start: 8 @62749 has 17 MA's), (9, 62731), (16, 62590), (18, 62569),

Gene: Rich\_78 Start: 63621, Stop: 63382, Start Num: 10

Candidate Starts for Rich\_78:

(Start: 10 @63621 has 1 MA's), (19, 63444), (20, 63441), (21, 63420), (22, 63405),

Gene: Serendipitous\_79 Start: 62642, Stop: 62391, Start Num: 8

Candidate Starts for Serendipitous\_79:

(Start: 8 @62642 has 17 MA's), (9, 62624), (12, 62564), (16, 62483), (18, 62462), (21, 62423),

Gene: SirJeffery\_78 Start: 62742, Stop: 62485, Start Num: 8

Candidate Starts for SirJeffery\_78:

(4, 62820), (Start: 8 @62742 has 17 MA's), (9, 62724), (11, 62685), (18, 62562), (19, 62547), (20, 62544), (21, 62523),

Gene: Stinger\_78 Start: 62665, Stop: 62423, Start Num: 8

Candidate Starts for Stinger\_78:

(2, 62797), (7, 62680), (Start: 8 @62665 has 17 MA's), (9, 62647), (11, 62608), (14, 62563), (17, 62506),

Gene: StinkyVeggy\_77 Start: 62535, Stop: 62341, Start Num: 11

Candidate Starts for StinkyVeggy\_77:

(Start: 8 @62592 has 17 MA's), (11, 62535), (18, 62412),

Gene: Suigeneris\_81 Start: 63180, Stop: 62923, Start Num: 8

Candidate Starts for Suigeneris\_81:

(1, 63345), (4, 63258), (Start: 8 @63180 has 17 MA's), (9, 63162), (11, 63123), (18, 63000), (19, 62985), (20, 62982), (21, 62961),

Gene: VioletZ\_82 Start: 64351, Stop: 64109, Start Num: 8

Candidate Starts for VioletZ\_82:

(2, 64486), (6, 64393), (7, 64366), (Start: 8 @64351 has 17 MA's), (9, 64339), (15, 64225), (17, 64192), (18, 64177),

Gene: Waleliano\_79 Start: 64025, Stop: 63783, Start Num: 8

Candidate Starts for Waleliano\_79:

(2, 64157), (6, 64067), (7, 64040), (Start: 8 @64025 has 17 MA's), (9, 64013), (15, 63899), (17, 63866), (18, 63851),