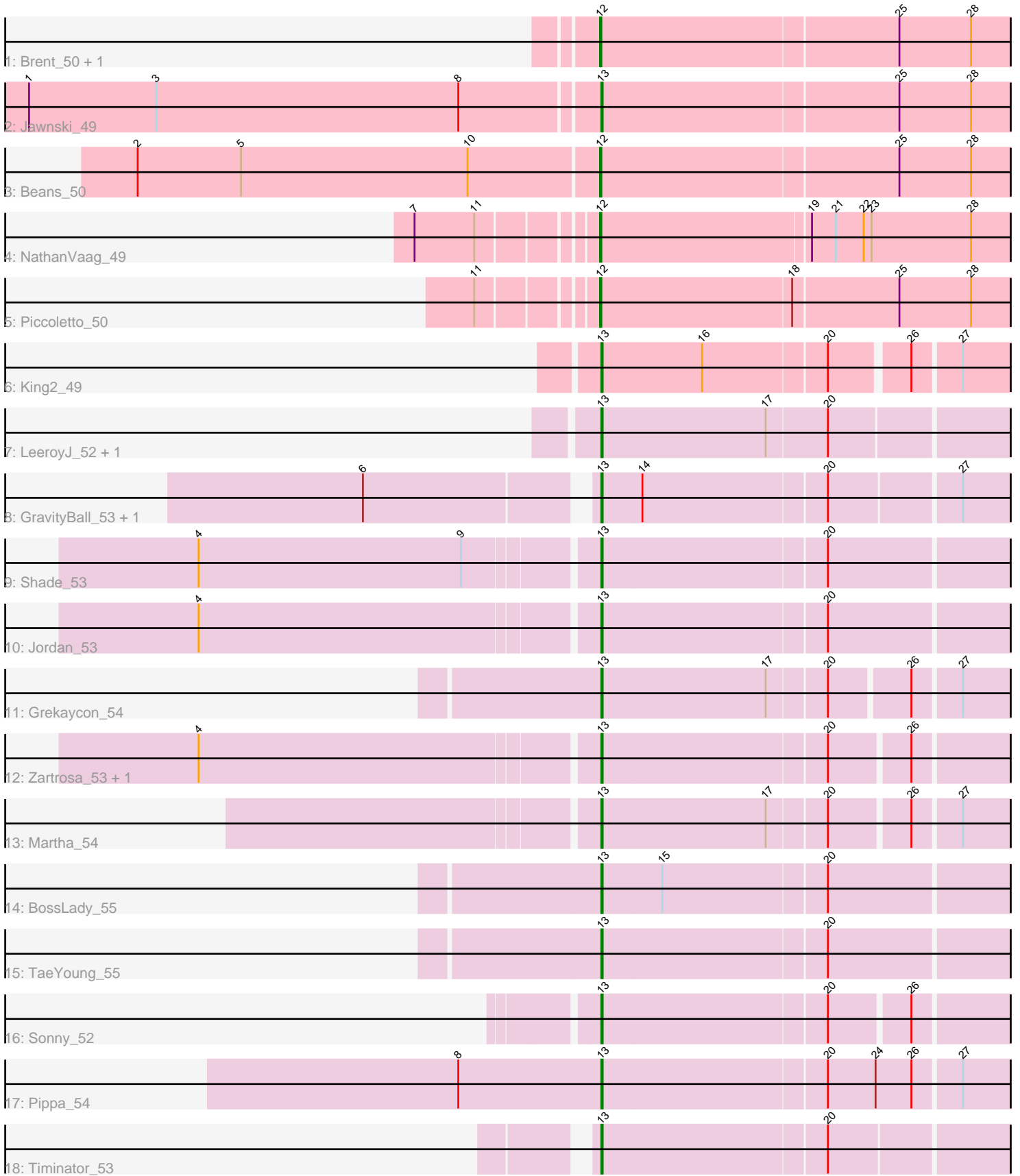


Pham 168522



Note: Tracks are now grouped by subcluster and scaled. Switching in subcluster is indicated by changes in track color. Track scale is now set by default to display the region 30 bp upstream of start 1 to 30 bp downstream of the last possible start. If this default region is judged to be packed too tightly with annotated starts, the track will be further scaled to only show that region of the ORF with annotated starts. This action will be indicated by adding "Zoomed" to the title. For starts, yellow indicates the location of called starts comprised solely of Glimmer/GeneMark auto-annotations, green indicates the location of called starts with at least 1 manual gene annotation.

## Pham 168522 Report

This analysis was run 07/09/24 on database version 566.

Pham number 168522 has 22 members, 1 are drafts.

Phages represented in each track:

- Track 1 : Brent\_50, Franzy\_50
- Track 2 : Jawnski\_49
- Track 3 : Beans\_50
- Track 4 : NathanVaag\_49
- Track 5 : Piccoletto\_50
- Track 6 : King2\_49
- Track 7 : LeeroyJ\_52, BarretLemon\_52
- Track 8 : GravityBall\_53, StevieBAY\_53
- Track 9 : Shade\_53
- Track 10 : Jordan\_53
- Track 11 : Grekaycon\_54
- Track 12 : Zartrosa\_53, JKerns\_53
- Track 13 : Martha\_54
- Track 14 : BossLady\_55
- Track 15 : TaeYoung\_55
- Track 16 : Sonny\_52
- Track 17 : Pippa\_54
- Track 18 : Timinator\_53

### ***Summary of Final Annotations (See graph section above for start numbers):***

The start number called the most often in the published annotations is 13, it was called in 16 of the 21 non-draft genes in the pham.

Genes that call this "Most Annotated" start:

- BarretLemon\_52, BossLady\_55, GravityBall\_53, Grekaycon\_54, JKerns\_53, Jawnski\_49, Jordan\_53, King2\_49, LeeroyJ\_52, Martha\_54, Pippa\_54, Shade\_53, Sonny\_52, StevieBAY\_53, TaeYoung\_55, Timinator\_53, Zartrosa\_53,

Genes that have the "Most Annotated" start but do not call it:

- 

Genes that do not have the "Most Annotated" start:

- Beans\_50, Brent\_50, Franzy\_50, NathanVaag\_49, Piccoletto\_50,

## Summary by start number:

### Start 12:

- Found in 5 of 22 ( 22.7% ) of genes in pham
- Manual Annotations of this start: 5 of 21
- Called 100.0% of time when present
- Phage (with cluster) where this start called: Beans\_50 (AO1), Brent\_50 (AO1), Franzy\_50 (AO1), NathanVaag\_49 (AO1), Piccoletto\_50 (AO1),

### Start 13:

- Found in 17 of 22 ( 77.3% ) of genes in pham
- Manual Annotations of this start: 16 of 21
- Called 100.0% of time when present
- Phage (with cluster) where this start called: BarretLemon\_52 (AO2), BossLady\_55 (AO2), GravityBall\_53 (AO2), Grekaycon\_54 (AO2), JKerns\_53 (AO2), Jawnski\_49 (AO1), Jordan\_53 (AO2), King2\_49 (AO1), LeeroyJ\_52 (AO2), Martha\_54 (AO2), Pippa\_54 (AO2), Shade\_53 (AO2), Sonny\_52 (AO2), StevieBAY\_53 (AO2), TaeYoung\_55 (AO2), Timinator\_53 (AO2), Zartrosa\_53 (AO2),

## Summary by clusters:

There are 2 clusters represented in this pham: AO2, AO1,

### Info for manual annotations of cluster AO1:

- Start number 12 was manually annotated 5 times for cluster AO1.
- Start number 13 was manually annotated 2 times for cluster AO1.

### Info for manual annotations of cluster AO2:

- Start number 13 was manually annotated 14 times for cluster AO2.

## Gene Information:

Gene: BarretLemon\_52 Start: 37854, Stop: 38150, Start Num: 13

Candidate Starts for BarretLemon\_52:

(Start: 13 @37854 has 16 MA's), (17, 37977), (20, 38022),

Gene: Beans\_50 Start: 37744, Stop: 38049, Start Num: 12

Candidate Starts for Beans\_50:

(2, 37399), (5, 37477), (10, 37648), (Start: 12 @37744 has 5 MA's), (25, 37963), (28, 38017),

Gene: BossLady\_55 Start: 38508, Stop: 38804, Start Num: 13

Candidate Starts for BossLady\_55:

(Start: 13 @38508 has 16 MA's), (15, 38553), (20, 38673),

Gene: Brent\_50 Start: 38026, Stop: 38331, Start Num: 12

Candidate Starts for Brent\_50:

(Start: 12 @38026 has 5 MA's), (25, 38245), (28, 38299),

Gene: Franzy\_50 Start: 38042, Stop: 38347, Start Num: 12

Candidate Starts for Franzy\_50:

(Start: 12 @38042 has 5 MA's), (25, 38261), (28, 38315),

Gene: GravityBall\_53 Start: 38308, Stop: 38601, Start Num: 13

Candidate Starts for GravityBall\_53:

(6, 38149), (Start: 13 @38308 has 16 MA's), (14, 38338), (20, 38473), (27, 38566),

Gene: Grekaycon\_54 Start: 38407, Stop: 38697, Start Num: 13

Candidate Starts for Grekaycon\_54:

(Start: 13 @38407 has 16 MA's), (17, 38530), (20, 38572), (26, 38629), (27, 38662),

Gene: JKerns\_53 Start: 38481, Stop: 38771, Start Num: 13

Candidate Starts for JKerns\_53:

(4, 38190), (Start: 13 @38481 has 16 MA's), (20, 38646), (26, 38703),

Gene: Jawnski\_49 Start: 37551, Stop: 37856, Start Num: 13

Candidate Starts for Jawnski\_49:

(1, 37128), (3, 37224), (8, 37452), (Start: 13 @37551 has 16 MA's), (25, 37770), (28, 37824),

Gene: Jordan\_53 Start: 38284, Stop: 38580, Start Num: 13

Candidate Starts for Jordan\_53:

(4, 37993), (Start: 13 @38284 has 16 MA's), (20, 38449),

Gene: King2\_49 Start: 37956, Stop: 38243, Start Num: 13

Candidate Starts for King2\_49:

(Start: 13 @37956 has 16 MA's), (16, 38031), (20, 38121), (26, 38175), (27, 38208),

Gene: LeeroyJ\_52 Start: 37883, Stop: 38179, Start Num: 13

Candidate Starts for LeeroyJ\_52:

(Start: 13 @37883 has 16 MA's), (17, 38006), (20, 38051),

Gene: Martha\_54 Start: 38509, Stop: 38799, Start Num: 13

Candidate Starts for Martha\_54:

(Start: 13 @38509 has 16 MA's), (17, 38632), (20, 38674), (26, 38731), (27, 38764),

Gene: NathanVaag\_49 Start: 37569, Stop: 37871, Start Num: 12

Candidate Starts for NathanVaag\_49:

(7, 37446), (11, 37491), (Start: 12 @37569 has 5 MA's), (19, 37722), (21, 37740), (22, 37761), (23, 37767), (28, 37842),

Gene: Piccoletto\_50 Start: 37761, Stop: 38066, Start Num: 12

Candidate Starts for Piccoletto\_50:

(11, 37683), (Start: 12 @37761 has 5 MA's), (18, 37902), (25, 37980), (28, 38034),

Gene: Pippa\_54 Start: 38395, Stop: 38691, Start Num: 13

Candidate Starts for Pippa\_54:

(8, 38287), (Start: 13 @38395 has 16 MA's), (20, 38560), (24, 38596), (26, 38623), (27, 38656),

Gene: Shade\_53 Start: 38209, Stop: 38505, Start Num: 13

Candidate Starts for Shade\_53:

(4, 37918), (9, 38116), (Start: 13 @38209 has 16 MA's), (20, 38374),

Gene: Sonny\_52 Start: 37959, Stop: 38249, Start Num: 13

Candidate Starts for Sonny\_52:

(Start: 13 @37959 has 16 MA's), (20, 38124), (26, 38181),

Gene: StevieBAY\_53 Start: 38305, Stop: 38598, Start Num: 13

Candidate Starts for StevieBAY\_53:

(6, 38146), (Start: 13 @38305 has 16 MA's), (14, 38335), (20, 38470), (27, 38563),

Gene: TaeYoung\_55 Start: 38476, Stop: 38772, Start Num: 13

Candidate Starts for TaeYoung\_55:

(Start: 13 @38476 has 16 MA's), (20, 38641),

Gene: Timinator\_53 Start: 38174, Stop: 38467, Start Num: 13

Candidate Starts for Timinator\_53:

(Start: 13 @38174 has 16 MA's), (20, 38339),

Gene: Zartrosa\_53 Start: 38260, Stop: 38550, Start Num: 13

Candidate Starts for Zartrosa\_53:

(4, 37969), (Start: 13 @38260 has 16 MA's), (20, 38425), (26, 38482),