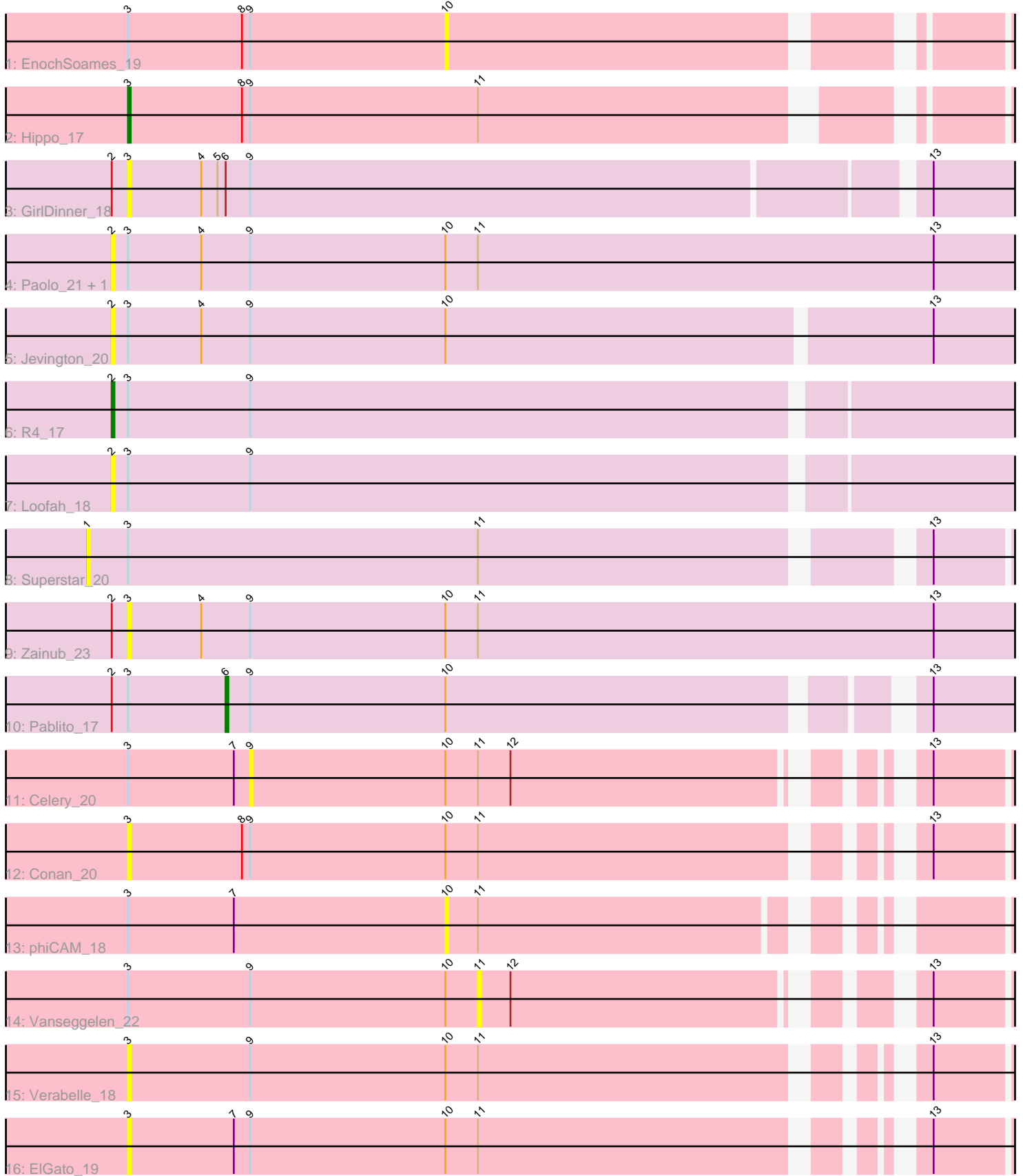


Pham 168564



Note: Tracks are now grouped by subcluster and scaled. Switching in subcluster is indicated by changes in track color. Track scale is now set by default to display the region 30 bp upstream of start 1 to 30 bp downstream of the last possible start. If this default region is judged to be packed too tightly with annotated starts, the track will be further scaled to only show that region of the ORF with annotated starts. This action will be indicated by adding "Zoomed" to the title. For starts, yellow indicates the location of called starts comprised solely of Glimmer/GeneMark auto-annotations, green indicates the location of called starts with at least 1 manual gene annotation.

Pham 168564 Report

This analysis was run 07/09/24 on database version 566.

WARNING: Pham size does not match number of genes in report. Either unphamerated genes have been added (by you) or starterator has removed genes due to invalid start codon.

Pham number 168564 has 17 members, 14 are drafts.

Phages represented in each track:

- Track 1 : EnochSoames_19
- Track 2 : Hippo_17
- Track 3 : GirlDinner_18
- Track 4 : Paolo_21, Puginator_21
- Track 5 : Jevington_20
- Track 6 : R4_17
- Track 7 : Loofah_18
- Track 8 : Superstar_20
- Track 9 : Zainub_23
- Track 10 : Pablito_17
- Track 11 : Celery_20
- Track 12 : Conan_20
- Track 13 : phiCAM_18
- Track 14 : Vanseggelen_22
- Track 15 : Verabelle_18
- Track 16 : ElGato_19

Summary of Final Annotations (See graph section above for start numbers):

The start number called the most often in the published annotations is 3, it was called in 1 of the 3 non-draft genes in the pham.

Genes that call this "Most Annotated" start:

- Conan_20, ElGato_19, GirlDinner_18, Hippo_17, Verabelle_18, Zainub_23,

Genes that have the "Most Annotated" start but do not call it:

- Celery_20, EnochSoames_19, Jevington_20, Loofah_18, Pablito_17, Paolo_21, Puginator_21, R4_17, Superstar_20, Vanseggelen_22, phiCAM_18,

Genes that do not have the "Most Annotated" start:

-

Summary by start number:

Start 1:

- Found in 1 of 17 (5.9%) of genes in pham
- No Manual Annotations of this start.
- Called 100.0% of time when present
- Phage (with cluster) where this start called: Superstar_20 (BD2),

Start 2:

- Found in 8 of 17 (47.1%) of genes in pham
- Manual Annotations of this start: 1 of 3
- Called 62.5% of time when present
- Phage (with cluster) where this start called: Jevington_20 (BD2), Loofah_18 (BD2), Paolo_21 (BD2), Puginator_21 (BD2), R4_17 (BD2),

Start 3:

- Found in 17 of 17 (100.0%) of genes in pham
- Manual Annotations of this start: 1 of 3
- Called 35.3% of time when present
- Phage (with cluster) where this start called: Conan_20 (BD3), ElGato_19 (BD3), GirlDinner_18 (BD2), Hippo_17 (BD1), Verabelle_18 (BD3), Zainub_23 (BD2),

Start 6:

- Found in 2 of 17 (11.8%) of genes in pham
- Manual Annotations of this start: 1 of 3
- Called 50.0% of time when present
- Phage (with cluster) where this start called: Pablito_17 (BD2),

Start 9:

- Found in 15 of 17 (88.2%) of genes in pham
- No Manual Annotations of this start.
- Called 6.7% of time when present
- Phage (with cluster) where this start called: Celery_20 (BD3),

Start 10:

- Found in 12 of 17 (70.6%) of genes in pham
- No Manual Annotations of this start.
- Called 16.7% of time when present
- Phage (with cluster) where this start called: EnochSoames_19 (BD1), phiCAM_18 (BD3),

Start 11:

- Found in 11 of 17 (64.7%) of genes in pham
- No Manual Annotations of this start.
- Called 9.1% of time when present
- Phage (with cluster) where this start called: Vanseggelen_22 (BD3),

Summary by clusters:

There are 3 clusters represented in this pham: BD1, BD3, BD2,

Info for manual annotations of cluster BD1:

- Start number 3 was manually annotated 1 time for cluster BD1.

Info for manual annotations of cluster BD2:

- Start number 2 was manually annotated 1 time for cluster BD2.
- Start number 6 was manually annotated 1 time for cluster BD2.

Gene Information:

Gene: Celery_20 Start: 11250, Stop: 11507, Start Num: 9

Candidate Starts for Celery_20:

(Start: 3 @11205 has 1 MA's), (7, 11244), (9, 11250), (10, 11322), (11, 11334), (12, 11346), (13, 11472),

Gene: Conan_20 Start: 10975, Stop: 11280, Start Num: 3

Candidate Starts for Conan_20:

(Start: 3 @10975 has 1 MA's), (8, 11017), (9, 11020), (10, 11092), (11, 11104), (13, 11245),

Gene: ElGato_19 Start: 10978, Stop: 11283, Start Num: 3

Candidate Starts for ElGato_19:

(Start: 3 @10978 has 1 MA's), (7, 11017), (9, 11023), (10, 11095), (11, 11107), (13, 11248),

Gene: EnochSoames_19 Start: 11630, Stop: 11824, Start Num: 10

Candidate Starts for EnochSoames_19:

(Start: 3 @11513 has 1 MA's), (8, 11555), (9, 11558), (10, 11630),

Gene: GirlDinner_18 Start: 11176, Stop: 11499, Start Num: 3

Candidate Starts for GirlDinner_18:

(Start: 2 @11170 has 1 MA's), (Start: 3 @11176 has 1 MA's), (4, 11203), (5, 11209), (Start: 6 @11212 has 1 MA's), (9, 11221), (13, 11461),

Gene: Hippo_17 Start: 11334, Stop: 11642, Start Num: 3

Candidate Starts for Hippo_17:

(Start: 3 @11334 has 1 MA's), (8, 11376), (9, 11379), (11, 11463),

Gene: Jevington_20 Start: 11810, Stop: 12145, Start Num: 2

Candidate Starts for Jevington_20:

(Start: 2 @11810 has 1 MA's), (Start: 3 @11816 has 1 MA's), (4, 11843), (9, 11861), (10, 11933), (13, 12107),

Gene: Loofah_18 Start: 11319, Stop: 11651, Start Num: 2

Candidate Starts for Loofah_18:

(Start: 2 @11319 has 1 MA's), (Start: 3 @11325 has 1 MA's), (9, 11370),

Gene: Pablito_17 Start: 11212, Stop: 11490, Start Num: 6

Candidate Starts for Pablito_17:

(Start: 2 @11170 has 1 MA's), (Start: 3 @11176 has 1 MA's), (Start: 6 @11212 has 1 MA's), (9, 11221), (10, 11293), (13, 11452),

Gene: Paolo_21 Start: 11817, Stop: 12158, Start Num: 2

Candidate Starts for Paolo_21:

(Start: 2 @11817 has 1 MA's), (Start: 3 @11823 has 1 MA's), (4, 11850), (9, 11868), (10, 11940), (11, 11952), (13, 12120),

Gene: Puginator_21 Start: 11775, Stop: 12116, Start Num: 2

Candidate Starts for Puginator_21:

(Start: 2 @11775 has 1 MA's), (Start: 3 @11781 has 1 MA's), (4, 11808), (9, 11826), (10, 11898), (11, 11910), (13, 12078),

Gene: R4_17 Start: 11302, Stop: 11634, Start Num: 2

Candidate Starts for R4_17:

(Start: 2 @11302 has 1 MA's), (Start: 3 @11308 has 1 MA's), (9, 11353),

Gene: Superstar_20 Start: 12332, Stop: 12667, Start Num: 1

Candidate Starts for Superstar_20:

(1, 12332), (Start: 3 @12347 has 1 MA's), (11, 12476), (13, 12626),

Gene: Vanseggelen_22 Start: 11038, Stop: 11214, Start Num: 11

Candidate Starts for Vanseggelen_22:

(Start: 3 @10909 has 1 MA's), (9, 10954), (10, 11026), (11, 11038), (12, 11050), (13, 11179),

Gene: Verabelle_18 Start: 11240, Stop: 11545, Start Num: 3

Candidate Starts for Verabelle_18:

(Start: 3 @11240 has 1 MA's), (9, 11285), (10, 11357), (11, 11369), (13, 11510),

Gene: Zainub_23 Start: 11781, Stop: 12116, Start Num: 3

Candidate Starts for Zainub_23:

(Start: 2 @11775 has 1 MA's), (Start: 3 @11781 has 1 MA's), (4, 11808), (9, 11826), (10, 11898), (11, 11910), (13, 12078),

Gene: phiCAM_18 Start: 13322, Stop: 13507, Start Num: 10

Candidate Starts for phiCAM_18:

(Start: 3 @13205 has 1 MA's), (7, 13244), (10, 13322), (11, 13334),