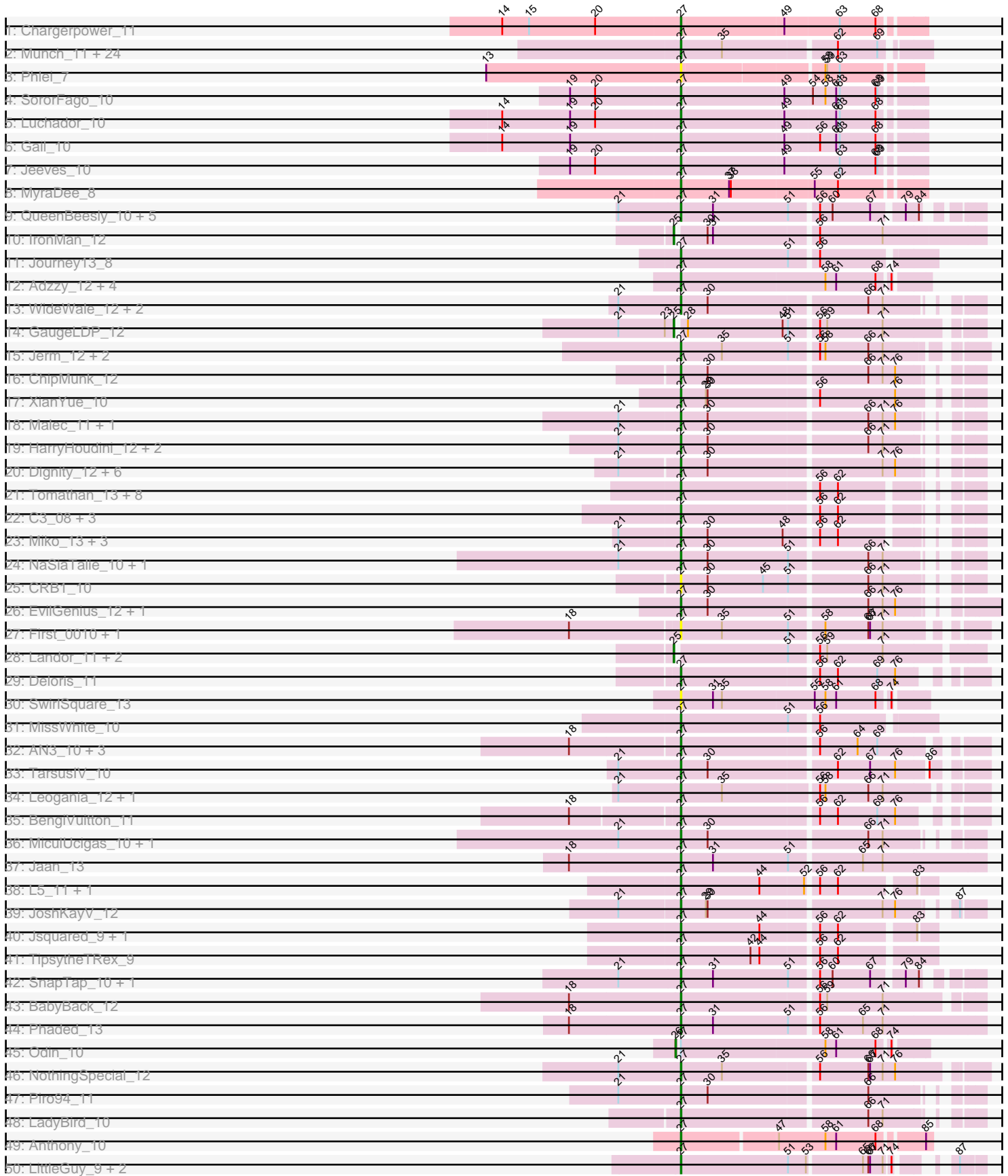
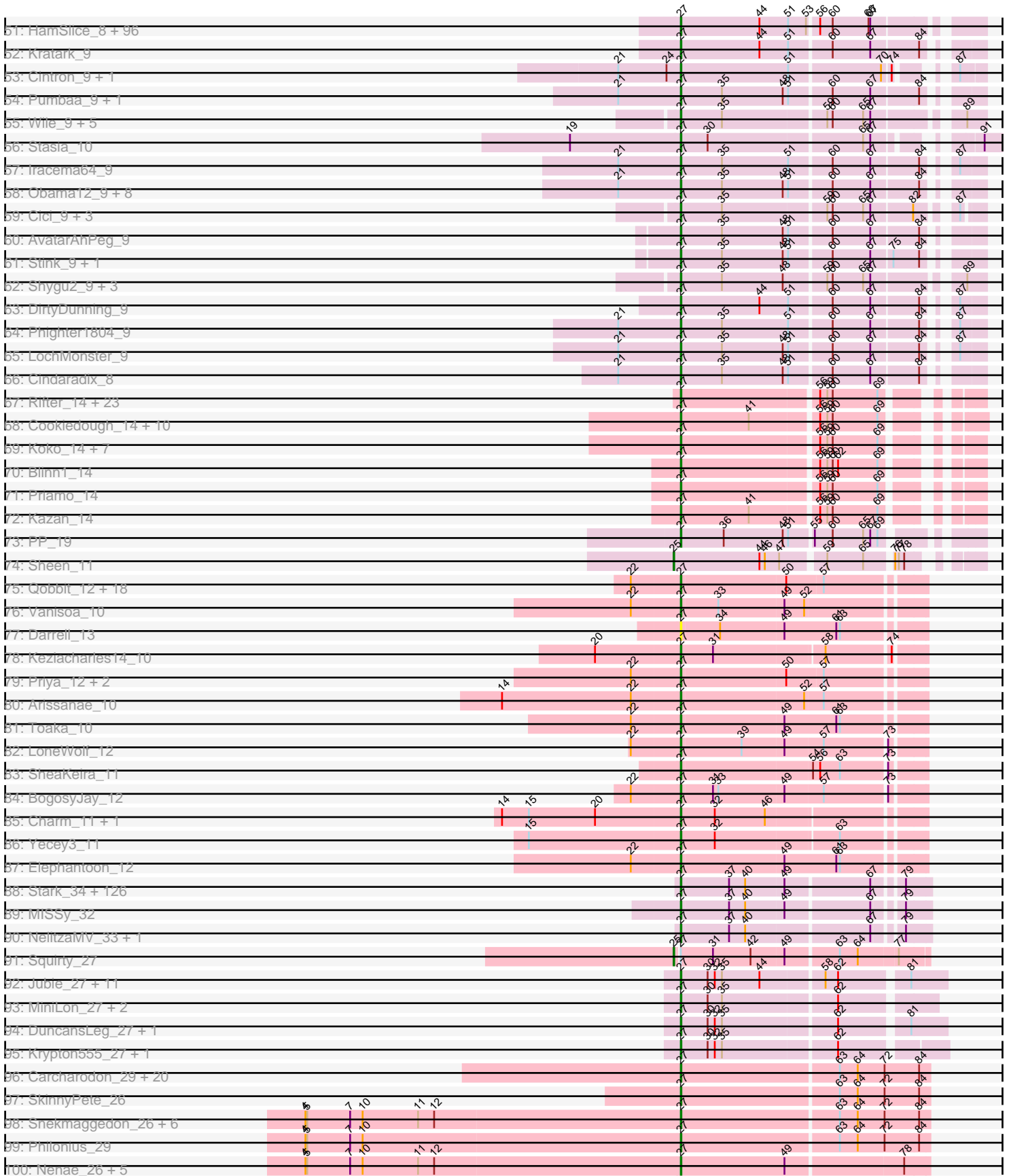


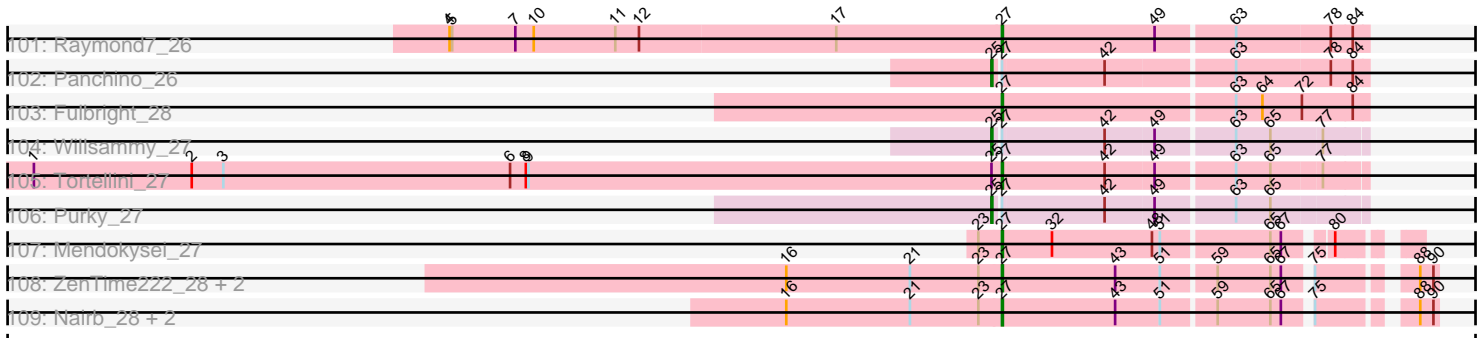
Pham 169574



Pham 169574



Pham 169574



Note: Tracks are now grouped by subcluster and scaled. Switching in subcluster is indicated by changes in track color. Track scale is now set by default to display the region 30 bp upstream of start 1 to 30 bp downstream of the last possible start. If this default region is judged to be packed too tightly with annotated starts, the track will be further scaled to only show that region of the ORF with annotated starts. This action will be indicated by adding "Zoomed" to the title. For starts, yellow indicates the location of called starts comprised solely of Glimmer/GeneMark auto-annotations, green indicates the location of called starts with at least 1 manual gene annotation.

Pham 169574 Report

This analysis was run 07/09/24 on database version 566.

Pham number 169574 has 540 members, 35 are drafts.

Phages represented in each track:

- Track 1 : Chargerpower_11
- Track 2 : Munch_11, Salz_11, Lucivia_11, Et2Brutus_10, MaCh_11, Orange_11, Insomnia_11, Jabith_11, Flaverint_11, TinyTimmy_10, Petersenfast_10, Fibonacci_11, Bowtie_11, Sham4_11, Bachome_11, Ebony_11, Gilberta_11, Timothy_11, Joselito_11, Aneem_11, Mulciber_11, Bud_11, Mabel_11, Hutc2_11, Snape_11
- Track 3 : Phlei_7
- Track 4 : SororFago_10
- Track 5 : Luchador_10
- Track 6 : Gail_10
- Track 7 : Jeeves_10
- Track 8 : MyraDee_8
- Track 9 : QueenBeesly_10, Georgie2_11, SweetiePie_10, Power_10, FiringLine_10, SemperFi_12
- Track 10 : IronMan_12
- Track 11 : Journey13_8
- Track 12 : Adzzy_12, Ph8s_12, Caraxes_10, Che12_12, Superchunk_10
- Track 13 : WideWale_12, Updawg_12, Equemioh13_12
- Track 14 : GaugeLDP_12
- Track 15 : Jerm_12, LilTurb_12, Turbido_12
- Track 16 : ChipMunk_12
- Track 17 : XianYue_10
- Track 18 : Malec_11, Larenn_11
- Track 19 : HarryHoudini_12, Baehexic_11, Drake55_12
- Track 20 : Dignity_12, AbbyPaige_12, Whabigail7_12, Bugsy_12, Smeagan_12, Leviathan_12, Agape74_12
- Track 21 : Tomathan_13, D32_13, Kerberos_13, D29_11, DBQu4n_13, StarStuff_13, Naji_13, Duplo_13, Pomar16_13
- Track 22 : C3_08, AN9_13, VC3_13, ANI8_13
- Track 23 : Miko_13, Rachaly_13, Lokk_13, BobSwaget_13
- Track 24 : NaSiaTalie_10, Flare16_10
- Track 25 : CRB1_10
- Track 26 : EvilGenius_12, KingCyrus_12
- Track 27 : First_0010, 20ES_10
- Track 28 : Landor_11, Bactobuster_11, Pukovnik_12
- Track 29 : Deloris_11
- Track 30 : SwirlSquare_13

- Track 31 : MissWhite_10
- Track 32 : AN3_10, VA6_10, Benvolio_10, Echild_10
- Track 33 : TarsusIV_10
- Track 34 : Leogania_12, BiancaTri92_12
- Track 35 : BengiVuitton_11
- Track 36 : MiculUcigas_10, Centaur_12
- Track 37 : Jaan_13
- Track 38 : L5_11, Koduck_10
- Track 39 : JoshKayV_12
- Track 40 : Jsquared_9, Serenity_9
- Track 41 : TopsytheTRex_9
- Track 42 : SnapTap_10, Crucio_10
- Track 43 : BabyBack_12
- Track 44 : Phaded_13
- Track 45 : Odin_10
- Track 46 : NothingSpecial_12
- Track 47 : Piro94_11
- Track 48 : LadyBird_10
- Track 49 : Anthony_10
- Track 50 : LittleGuy_9, Nyxis_9, Phontbonne_9
- Track 51 : HamSlice_8, Kampy_9, Jaykayelowell_9, Taquarus_9, Lorenzo_9, TroyPia_9, Ohfah_9, Sabertooth_9, CentreCat_9, Clarenza_9, Iceman_9, Ruin_9, Connomayer_9, Floean_9, JoongJeon_9, Phacado_9, Albee_9, Eros_9, Bombshell_9, Maverick_9, LittleB_9, Anyong_9, BellusTerra_9, Phelipe_9, Peaches_9, ICleared_9, Avle17_9, TiroTheta9_9, Koreni_8, MeeZee_9, OKaNui_9, Millski_9, JetBlade_9, Commander_9, Eagle_8, Eris_9, Relief_9, TygerBlood_9, Lunsford_10, Gadost_9, NorthStar_9, Wilbur_9, Eapen_9, Kingmustik0402_9, Holli_9, Pipcraft_9, Polymorphads_9, Melvin_9, Palestino_9, Medusa_9, LeoAvram_9, Eurydice_9, YoSam321_9, Citius_9, Sparxx_9, Caelakin_9, Arturo_8, TinaFeyge_9, Kyee_9, Cocoaberry_9, LappelDuVide_8, Spino_9, Roosevelt_9, Funston_9, Wizard007_9, KFPoly_9, Dhanush_9, Bruiser_9, Blackmoor_9, Baby16_9, Scamp_9, Maxo_9, PeterPeter_9, Houdini22_9, Nemo27_9, BubbleTrouble_9, Broseidon_9, Romney_9, Lemur_9, Noelle_9, Nebs_9, Bartimeaus_9, NotAPhaseMom_9, Skipitt_9, Shaka_9, Chaph_9, Alberto7_10, Flux_9, Druantia_9, Thanksgivukkah_9, Mazhar510_9, Morrow_9, Happiness_9, Burger_8, Deano_9, Wander_9, Abdiel_9
- Track 52 : Kratak_9
- Track 53 : Cintron_9, Kremtemulon_8
- Track 54 : Pumbaa_9, Mundrea_9
- Track 55 : Wile_9, PetiteSangsue_9, Katalie136_9, Perplexer_9, Datway_9, Backyardigan_9
- Track 56 : Stasia_10
- Track 57 : Iracema64_9
- Track 58 : Obama12_9, Ulysses_8, LHTSCC_9, Camperdownii_8, SheldonCooper_9, ChampagnePapi_9, Tinybot_8, Cerulean_9, BangNhom_8
- Track 59 : Cici_9, Badger_9, Xena_9, Achebe_9
- Track 60 : AvatarAhPeg_9
- Track 61 : Stink_9, Miramae_9
- Track 62 : Shygu2_9, Bumblebee11_9, Morpher26_9, AbbysRanger_9
- Track 63 : DirtyDunning_9
- Track 64 : Phighter1804_9
- Track 65 : LochMonster_9
- Track 66 : Cindaradix_8

- Track 67 : Rifter_14, Wiks_14, Hammer_14, CloudWang3_14, VohminGhazi_14, SmellyB_14, Gladiator_14, Blue7_14, Kipper29_14, Dorothea_13, Chartreuse_14, DaVinci_14, Yokurt_14, Gruunaga_14, Candra_14, ToneTone_13, WunderPhul_14, Zulu_14, Lilbunny_13, McFly_14, Hoot_14, Jeffabunny_14, GreedyLawyer_14, Zaka_14
- Track 68 : Cookiedough_14, Isiphiwo_14, SuperCallie99_14, JewelBug_14, Pmask_14, Jordennis_14, Neeharika16_14, Newrala_14, EricB_14, BABullseye_14, SuperAwesome_14
- Track 69 : Koko_14, Tucker_14, Roksolana_14, Artemis2UCLA_14, Helmet_15, Indra_14, Hexamo_14, Garak_15
- Track 70 : Blinn1_14
- Track 71 : Priamo_14
- Track 72 : Kazan_14
- Track 73 : PP_19
- Track 74 : Sheen_11
- Track 75 : Qobbit_12, Aliter_12, Ugenie5_9, Tubs_12, Phaeder_12, Pioneer_12, ExplosioNervosa_12, Scherzo_12, Fayely_12, Phonnegut_12, EmyBug_12, Maminiaina_12, Myxus_12, HortumSL17_12, Alma_12, Conquerage_12, Catalina_12, Beemo_12, PackMan_12
- Track 76 : Vanisoa_10
- Track 77 : Darrell_13
- Track 78 : Keziacharles14_10
- Track 79 : Priya_12, Eidsmoe_12, Spouty_11
- Track 80 : Arissanae_10
- Track 81 : Toaka_10
- Track 82 : LoneWolf_12
- Track 83 : SheaKeira_11
- Track 84 : BogosyJay_12
- Track 85 : Charm_11, DreamTeam1_11
- Track 86 : Yecey3_11
- Track 87 : Elephantoon_12
- Track 88 : Stark_34, Gemini_36, Harella_32, Maxxinista_34, Elph10_34, Tarkin_35, Moldemort_34, Emmina_34, Gage_35, HufflyPuff_32, Petra64142_35, FireRed_33, StellaBean_33, BugsBunny_31, Rimmer_32, Glexan_31, BadStone_32, Kostya_34, Kanye_35, SirDuracell_32, TeardropMSU_32, GoldenSpark_35, Thresher_34, Sassay_32, BaboJay_32, 244_35, Nala_33, ChotaBhai_33, Simpliphy_34, Cjw1_33, HanKaySha_34, Lilpickle_32, Argent26_35, Nimrod_33, Rakim_34, MadamMonkfish_33, Dumbo_33, Asriel_32, BilboSwaggins_33, Manda_34, Myrale_33, Ukulele_33, SophKB_33, Cactus_34, Youngblood_33, Adnama_36, GooberAzure_35, Pat3_32, IHOP_33, Hopey_35, YassJohnny_34, Dusk_32, Miniwave_33, PhatBacter_33, JeTaime_35, MPhalcon_32, Icee_32, Saints25_34, Kimchi_35, Stank_36, ShereKhan_35, Bask21_33, Quallification_34, Easy2Say_35, StolenFromERC_35, Contagion_32, Tuco_34, Palpatine_33, Hoonter_35, Traaww1_31, Flypotenuse_31, Mosby_32, Lilac_35, Tomaszewski_32, Barbarian_32, Sotrice96_33, Amao_33, Eureka_33, Czyszczon1_34, RiverMonster_33, BigBubba_34, AmericanBeauty_36, Terminus_33, Goldilocks_34, Bench_35, Murphy_34, Command613_34, Gator_31, CrystalP_33, Phrux_33, Mindy_33, Elite2014_32, Misfit_33, Goku_33, ChosenOne_33, Bruin_33, ABCat_32, Wiggin_36, Xandras_35, Willez_32, DrDrey_34, Paperbeatsrock_35, Holt_34, Policronamos_34, Phaja_33, Marshmallow_33, TBrady12_35, ShamWow_33, Cookies_33, Balomoji_32, Porky_33, DoctorDiddles_33, Filch_34, Henry_34, Teaspoon_34, Pumpkin_35, Buck_32, Highbury_34, xkcd_34, NoSleep_34, Lilizi_35, Phaux_32, OrionPax_34, Toto_33, Murica_32, Pharsalus_34, Inca_32

- Track 89 : MISSy_32
- Track 90 : NelitzaMV_33, Daikon_32
- Track 91 : Squirty_27
- Track 92 : Jubie_27, Bellis_27, Lumos_27, Snenia_27, Finnry_27, Clautastrophe_27, Nicholas_27, Moostard_27, Samty_27, Kingsolomon_27, MsGreen_27, Jobypre_27
- Track 93 : MiniLon_27, MiniMac_27, Lolly9_27
- Track 94 : DuncansLeg_27, Ellson_27
- Track 95 : Krypton555_27, Whirlwind_28
- Track 96 : Carcharodon_29, Silvy_29, Magsby_29, Schnauzer_29, Xerxes_29, Duplicity_29, Charlie_29, Bosection6_29, Phloss_26, Tapioca_29, Melville_29, Gex_29, Journey_30, Aggie_29, Chewbacca_29, Silvafighter_29, Parmesanjohn_29, Smurph_29, Pipsqueaks_29, Scitech_26, Xeno_28
- Track 97 : SkinnyPete_26
- Track 98 : Snekmaggedon_26, Andies_26, MichelleMyBell_27, Rebel_26, Shweta_26, SpongeBob_26, Jamie19_26
- Track 99 : Philonius_29
- Track 100 : Nenae_26, PhancyPhin_26, ShrimpFriedEgg_26, BabeRuth_26, Redi_26, Purgamenstris_26
- Track 101 : Raymond7_26
- Track 102 : Panchino_26
- Track 103 : Fulbright_28
- Track 104 : Willsammy_27
- Track 105 : Tortellini_27
- Track 106 : Purky_27
- Track 107 : Mendokysei_27
- Track 108 : ZenTime222_28, Ibrahim_28, RonRayGun_28
- Track 109 : Nairb_28, Bernal13_28, Whitty_28

Summary of Final Annotations (See graph section above for start numbers):

The start number called the most often in the published annotations is 27, it was called in 495 of the 505 non-draft genes in the pham.

Genes that call this "Most Annotated" start:

- 20ES_10, 244_35, ABCat_32, AN3_10, AN9_13, ANI8_13, AbbyPaige_12, AbbysRanger_9, Abdiel_9, Achebe_9, Adnama_36, Adzzy_12, Agape74_12, Aggie_29, Albee_9, Alberto7_10, Aliter_12, Alma_12, Amao_33, AmericanBeauty_36, Andies_26, Aneem_11, Annyong_9, Anthony_10, Argent26_35, Arissanae_10, Artemis2UCLA_14, Arturo_8, Asriel_32, AvatarAhPeg_9, Avle17_9, BABullseye_14, BabeRuth_26, BaboJay_32, Baby16_9, BabyBack_12, Bachome_11, Backyardigan_9, BadStone_32, Badger_9, Baehexic_11, Balomoji_32, BangNhom_8, Barbarian_32, Bartimeaus_9, Bask21_33, Beemo_12, Bellis_27, BellusTerra_9, Bench_35, BengiVuitton_11, Benvolio_10, Bernal13_28, BiancaTri92_12, BigBubba_34, BilboSwaggins_33, Blackmoor_9, Blinn1_14, Blue7_14, BobSwaget_13, BogosyJay_12, Bombshell_9, Bosection6_29, Bowtie_11, Broseidon_9, Bruin_33, Bruiser_9, BubbleTrouble_9, Buck_32, Bud_11, BugsBunny_31, Buggy_12, Bumblebee11_9, Burger_8, C3_08, CRB1_10, Cactus_34, Caelakin_9, Camperdownii_8, Candra_14, Caraxes_10, Carcharodon_29, Catalina_12, Centaur_12, CentreCat_9, Cerulean_9,

ChampagnePapi_9, Chaph_9, Chargerpower_11, Charlie_29, Charm_11, Chartreuse_14, Che12_12, Chewbacca_29, ChipMunk_12, ChosenOne_33, ChotaBhai_33, Cici_9, Cindaradix_8, Cintron_9, Citius_9, Cjw1_33, Clarenza_9, Clautastrophe_27, CloudWang3_14, Cocoaberry_9, Command613_34, Commander_9, Connomayer_9, Conquerage_12, Contagion_32, Cookiedough_14, Cookies_33, Crucio_10, CrystalP_33, Czyszczo1_34, D29_11, D32_13, DBQu4n_13, DaVinci_14, Daikon_32, Darrell_13, Datway_9, Deano_9, Deloris_11, Dhanush_9, Dignity_12, DirtyDunning_9, DoctorDiddles_33, Dorothea_13, DrDrey_34, Drake55_12, DreamTeam1_11, Druantia_9, Dumbo_33, DuncansLeg_27, Duplicity_29, Duplo_13, Dusk_32, Eagle_8, Eapen_9, Easy2Say_35, Ebony_11, Echid_10, Eidsmoe_12, Elephantoon_12, Elite2014_32, Ellson_27, Elph10_34, Emmina_34, EmyBug_12, Equemioh13_12, EricB_14, Eris_9, Eros_9, Et2Brutus_10, Eureka_33, Eurydice_9, EvilGenius_12, ExplosioNervosa_12, Fayely_12, Fibonacci_11, Filch_34, Finnry_27, FireRed_33, FiringLine_10, First_0010, Flare16_10, Flaverint_11, Florean_9, Flux_9, Flypotenuse_31, Fulbright_28, Funston_9, Gadost_9, Gage_35, Gail_10, Garak_15, Gator_31, Gemini_36, Georgie2_11, Gex_29, Gilberta_11, Gladiator_14, Glexan_31, Goku_33, GoldenSpark_35, Goldilocks_34, GooberAzure_35, GreedyLawyer_14, Gruunaga_14, HamSlice_8, Hammer_14, HanKaySha_34, Happiness_9, Harella_32, HarryHoudini_12, Helmet_15, Henry_34, Hexamo_14, Highbury_34, Holli_9, Holt_34, Hoonter_35, Hoot_14, Hopey_35, HortumSL17_12, Houdini22_9, HufflyPuff_32, Hutc2_11, ICleared_9, IHOP_33, Ibrahim_28, Icee_32, Iceman_9, Inca_32, Indra_14, Insomnia_11, Iracema64_9, Isiphiwo_14, Jaan_13, Jabith_11, Jamie19_26, Jaykayelowell_9, JeTaimie_35, Jeeves_10, Jeffabunny_14, Jerm_12, JetBlade_9, JewelBug_14, Jobypre_27, JoongJeon_9, Jordennis_14, Joselito_11, JoshKayV_12, Journey13_8, Journey_30, Jsquared_9, Jubie_27, KFPoly_9, Kampy_9, Kanye_35, Katalie136_9, Kazan_14, Kerberos_13, Keziacharles14_10, Kimchi_35, KingCyrus_12, Kingmustik0402_9, Kingsolomon_27, Kipper29_14, Koduck_10, Koko_14, Koreni_8, Kostya_34, Kratak_9, Kremtemulon_8, Krypton555_27, Kyee_9, L5_11, LHTSCC_9, LadyBird_10, LappelDuVide_8, Larenn_11, Lemur_9, LeoAvram_9, Leogania_12, Leviathan_12, LilTurb_12, Lilac_35, Lilbunny_13, Lilizi_35, Lilpickle_32, LittleB_9, LittleGuy_9, LochMonster_9, Lokk_13, Lolly9_27, LoneWolf_12, Lorenzo_9, Luchador_10, Lucivia_11, Lumos_27, Lunsford_10, MISSy_32, MPhalcon_32, MaCh_11, Mabel_11, MadamMonkfish_33, Magsby_29, Malec_11, Maminiaina_12, Manda_34, Marshmallow_33, Maverick_9, Maxo_9, Maxxinista_34, Mazhar510_9, McFly_14, Medusa_9, MeeZee_9, Melville_29, Melvin_9, Mendokysei_27, MichelleMyBell_27, MiculUcigas_10, Miko_13, Millski_9, Mindy_33, MiniLon_27, MiniMac_27, Miniwave_33, Miramae_9, Misfit_33, MissWhite_10, Moldemort_34, Moostard_27, Morpher26_9, Morrow_9, Mosby_32, MsGreen_27, Mulciber_11, Munch_11, Mundrea_9, Murica_32, Murphy_34, MyraDee_8, Myrale_33, Myxus_12, NaSiaTalie_10, Nairb_28, Naji_13, Nala_33, Nebs_9, Neeharika16_14, NelitzaMV_33, Nemo27_9, Nenae_26, Newrala_14, Nicholas_27, Nimrod_33, NoSleep_34, Noelle_9, NorthStar_9, NotAPhaseMom_9, NothingSpecial_12, Nyxis_9, OKaNui_9, Obama12_9, Ohfah_9, Orange_11, OrionPax_34, PP_19, PackMan_12, Palestino_9, Palpatine_33, Paperbeatsrock_35, Parmesanjohn_29, Pat3_32, Peaches_9, Perplexer_9, PeterPeter_9, Petersenfast_10, PetiteSangsue_9, Petra64142_35, Ph8s_12, Phacado_9, Phaded_13, Phaeder_12, Phaja_33, PhancyPhin_26, Pharsalus_34, PhatBacter_33, Phaux_32, Felipe_9, Phighter1804_9, Philonius_29, Phlei_7, Phloss_26, Phonnegut_12, Phontbonne_9, Phrux_33, Pioneer_12, Pipcraft_9, Pipsqueaks_29, Piro94_11, Pmask_14, Policronamos_34, Polymorphads_9, Pomar16_13, Porky_33, Power_10, Priamo_14, Priya_12, Pumbaa_9, Pumpkin_35, Purgamenstris_26, Qobbit_12, Quallification_34, QueenBeesly_10, Rachaly_13, Rakim_34,

Raymond7_26, Rebel_26, Redi_26, Relief_9, Rifter_14, Rimmer_32, RiverMonster_33, Roksolana_14, Romney_9, RonRayGun_28, Roosevelt_9, Ruin_9, Sabertooth_9, Saints25_34, Salz_11, Samty_27, Sassay_32, Scamp_9, Scherzo_12, Schnauzer_29, Scitech_26, SemperFi_12, Serenity_9, Shaka_9, Sham4_11, ShamWow_33, SheaKeira_11, SheldonCooper_9, ShereKhan_35, ShrimpFriedEgg_26, Shweta_26, Shygu2_9, Silvafighter_29, Silvy_29, Simpliphy_34, SirDuracell_32, SkinnyPete_26, Skipitt_9, Smeagan_12, SmellyB_14, Smurph_29, SnapTap_10, Snape_11, Snekmaggon_26, Snenia_27, SophKB_33, SororFago_10, Sotrice96_33, Sparxx_9, Spino_9, SpongeBob_26, Spouty_11, Stank_36, StarStuff_13, Stark_34, Stasia_10, StellaBean_33, Stink_9, StolenFromERC_35, SuperAwesome_14, SuperCallie99_14, Superchunk_10, SweetiePie_10, SwirlSquare_13, TBrady12_35, Tapioca_29, Taquarus_9, Tarkin_35, TarsusIV_10, TeardropMSU_32, Teaspoon_34, Terminus_33, Thanksgivukkah_9, Thresher_34, Timothy_11, TinaFeyge_9, TinyTimmy_10, Tinybot_8, TipsytheTRex_9, TiroTheta9_9, Toaka_10, Tomaszewski_32, Tomathan_13, ToneTone_13, Tortellini_27, Toto_33, Traaww1_31, TroyPia_9, Tubs_12, Tucker_14, Tuco_34, Turbido_12, TygerBlood_9, Ugenie5_9, Ukulele_33, Ulysses_8, Updawg_12, VA6_10, VC3_13, Vanisoa_10, VohminGhazi_14, Wander_9, Whabigail7_12, Whirlwind_28, Whitty_28, WideWale_12, Wiggin_36, Wiks_14, Wilbur_9, Wile_9, Willez_32, Wizard007_9, WunderPhul_14, Xandras_35, Xena_9, Xeno_28, Xerxes_29, XianYue_10, YassJohnny_34, Yecey3_11, YoSam321_9, Yokurt_14, Youngblood_33, Zaka_14, ZenTime222_28, Zulu_14, xkcd_34,

Genes that have the "Most Annotated" start but do not call it:

- Odin_10, Panchino_26, Purky_27, Squirty_27, Willsammy_27,

Genes that do not have the "Most Annotated" start:

- Bactobuster_11, GaugeLDP_12, IronMan_12, Landor_11, Pukovnik_12, Sheen_11,

Summary by start number:

Start 25:

- Found in 11 of 540 (2.0%) of genes in pham
- Manual Annotations of this start: 9 of 505
- Called 90.9% of time when present
- Phage (with cluster) where this start called: Bactobuster_11 (A2), GaugeLDP_12 (A2), IronMan_12 (A2), Landor_11 (A2), Panchino_26 (N), Pukovnik_12 (A2), Purky_27 (P6), Sheen_11 (A7), Squirty_27 (F3), Willsammy_27 (P1),

Start 26:

- Found in 1 of 540 (0.2%) of genes in pham
- Manual Annotations of this start: 1 of 505
- Called 100.0% of time when present
- Phage (with cluster) where this start called: Odin_10 (A2),

Start 27:

- Found in 534 of 540 (98.9%) of genes in pham
- Manual Annotations of this start: 495 of 505
- Called 99.1% of time when present
- Phage (with cluster) where this start called: 20ES_10 (A2), 244_35 (E), ABCat_32 (E), AN3_10 (A2), AN9_13 (A2), ANI8_13 (A2), AbbyPaige_12 (A2), AbbysRanger_9 (A4), Abdiel_9 (A4), Achebe_9 (A4), Adnama_36 (E), Adzzy_12 (A2), Agape74_12 (A2), Aggie_29 (N), Albee_9 (A4), Alberto7_10 (A4), Aliter_12 (A9), Alma_12 (A9),

Amao_33 (E), AmericanBeauty_36 (E), Andies_26 (N), Aneem_11 (A11), Annyong_9 (A4), Anthony_10 (A20), Argent26_35 (E), Arissanae_10 (A9), Artemis2UCLA_14 (A6), Arturo_8 (A4), Asriel_32 (E), AvatarAhPeg_9 (A4), Avle17_9 (A4), BABullseye_14 (A6), BabeRuth_26 (N), BaboJay_32 (E), Baby16_9 (A4), BabyBack_12 (A2), Bachome_11 (A11), Backyardigan_9 (A4), BadStone_32 (E), Badger_9 (A4), Baehexic_11 (A2), Balomoji_32 (E), BangNhom_8 (A4), Barbarian_32 (E), Bartimeaus_9 (A4), Bask21_33 (E), Beemo_12 (A9), Bellis_27 (L3), BellusTerra_9 (A4), Bench_35 (E), BengiVuitton_11 (A2), Benvolio_10 (A2), Bernal13_28 (T), BiancaTri92_12 (A2), BigBubba_34 (E), BilboSwaggins_33 (E), Blackmoor_9 (A4), Blinn1_14 (A6), Blue7_14 (A6), BobSwaget_13 (A2), BogosyJay_12 (A9), Bombshell_9 (A4), Bosection6_29 (N), Bowtie_11 (A11), Broseidon_9 (A4), Bruin_33 (E), Bruiser_9 (A4), BubbleTrouble_9 (A4), Buck_32 (E), Bud_11 (A11), BugsBunny_31 (E), Bugsy_12 (A2), Bumblebee11_9 (A4), Burger_8 (A4), C3_08 (A2), CRB1_10 (A2), Cactus_34 (E), Caelakin_9 (A4), Camperdownii_8 (A4), Candra_14 (A6), Caraxes_10 (A2), Carcharodon_29 (N), Catalina_12 (A9), Centaur_12 (A2), CentreCat_9 (A4), Cerulean_9 (A4), ChampagnePapi_9 (A4), Chaph_9 (A4), Chargerpower_11 (A), Charlie_29 (N), Charm_11 (A9), Chartreuse_14 (A6), Che12_12 (A2), Chewbacca_29 (N), ChipMunk_12 (A2), ChosenOne_33 (E), ChotaBhai_33 (E), Cici_9 (A4), Cindaradix_8 (A4), Cintron_9 (A4), Citius_9 (A4), Cjw1_33 (E), Clarenza_9 (A4), Clautastrophe_27 (L3), CloudWang3_14 (A6), Cocoaberry_9 (A4), Command613_34 (E), Commander_9 (A4), Connomayer_9 (A4), Conquerage_12 (A9), Contagion_32 (E), Cookiedough_14 (A6), Cookies_33 (E), Crucio_10 (A2), CrystalP_33 (E), Czyszczo1_34 (E), D29_11 (A2), D32_13 (A2), DBQu4n_13 (A2), DaVinci_14 (A6), Daikon_32 (E), Darrell_13 (A9), Datway_9 (A4), Deano_9 (A4), Deloris_11 (A2), Dhanush_9 (A4), Dignity_12 (A2), DirtyDunning_9 (A4), DoctorDiddles_33 (E), Dorothea_13 (A6), DrDrey_34 (E), Drake55_12 (A2), DreamTeam1_11 (A9), Druantia_9 (A4), Dumbo_33 (E), DuncansLeg_27 (L3), Duplicity_29 (N), Duplo_13 (A2), Dusk_32 (E), Eagle_8 (A4), Eapen_9 (A4), Easy2Say_35 (E), Ebony_11 (A11), Echild_10 (A2), Eidsmoe_12 (A9), Elephantoon_12 (A9), Elite2014_32 (E), Ellson_27 (L3), Elph10_34 (E), Emmina_34 (E), EmyBug_12 (A9), Equemioh13_12 (A2), EricB_14 (A6), Eris_9 (A4), Eros_9 (A4), Et2Brutus_10 (A11), Eureka_33 (E), Eurydice_9 (A4), EvilGenius_12 (A2), ExplosioNervosa_12 (A9), Fayely_12 (A9), Fibonacci_11 (A11), Filch_34 (E), Finrny_27 (L3), FireRed_33 (E), FiringLine_10 (A2), First_0010 (A2), Flare16_10 (A2), Flaverint_11 (A11), Florean_9 (A4), Flux_9 (A4), Flypotenuse_31 (E), Fulbright_28 (N), Funston_9 (A4), Gadost_9 (A4), Gage_35 (E), Gail_10 (A14), Garak_15 (A6), Gator_31 (E), Gemini_36 (E), Georgie2_11 (A2), Gex_29 (N), Gilberta_11 (A11), Gladiator_14 (A6), Glexan_31 (E), Goku_33 (E), GoldenSpark_35 (E), Goldilocks_34 (E), GooberAzure_35 (E), GreedyLawyer_14 (A6), Gruunaga_14 (A6), HamSlice_8 (A4), Hammer_14 (A6), HankKaySha_34 (E), Happiness_9 (A4), Harella_32 (E), HarryHoudini_12 (A2), Helmet_15 (A6), Henry_34 (E), Hexamo_14 (A6), Highbury_34 (E), Holli_9 (A4), Holt_34 (E), Hoonter_35 (E), Hoot_14 (A6), Hopey_35 (E), HortumSL17_12 (A9), Houdini22_9 (A4), HufflyPuff_32 (E), Hutc2_11 (A11), ICleared_9 (A4), IHOP_33 (E), Ibrahim_28 (T), Icee_32 (E), Iceman_9 (A4), Inca_32 (E), Indra_14 (A6), Insomnia_11 (A11), Iracema64_9 (A4), Isiphiwo_14 (A6), Jaan_13 (A2), Jabith_11 (A11), Jamie19_26 (N), Jaykayelowell_9 (A4), JeTaimie_35 (E), Jeeves_10 (A14), Jeffabunny_14 (A6), Jerm_12 (A2), JetBlade_9 (A4), JewelBug_14 (A6), Jobypre_27 (L3), JoongJeon_9 (A4), Jordennis_14 (A6), Joselito_11 (A11), JoshKayV_12 (A2), Journey13_8 (A2), Journey_30 (N), Jsquared_9 (A2), Jubie_27 (L3), KFPoly_9 (A4), Kamy_9 (A4), Kanye_35 (E), Katalie136_9 (A4), Kazan_14 (A6), Kerberos_13 (A2), Keziacharles14_10 (A9), Kimchi_35 (E), KingCyrus_12 (A2), Kingmustik0402_9 (A4), Kingsolomon_27 (L3), Kipper29_14 (A6), Koduck_10 (A2), Koko_14 (A6), Koreni_8 (A4), Kostya_34 (E),

Kratark_9 (A4), Kremtemulon_8 (A4), Krypton555_27 (L3), Kyee_9 (A4), L5_11 (A2), LHTSCC_9 (A4), LadyBird_10 (A2), LappelDuVide_8 (A4), Larenn_11 (A2), Lemur_9 (A4), LeoAvram_9 (A4), Leogania_12 (A2), Leviathan_12 (A2), LilTurb_12 (A2), Lilac_35 (E), Lilbunny_13 (A6), Lilizi_35 (E), Lilpickle_32 (E), LittleB_9 (A4), LittleGuy_9 (A4), LochMonster_9 (A4), Lokk_13 (A2), Lolly9_27 (L3), LoneWolf_12 (A9), Lorenzo_9 (A4), Luchador_10 (A14), Lucivia_11 (A11), Lumos_27 (L3), Lunsford_10 (A4), MISSy_32 (E), MPhalcon_32 (E), MaCh_11 (A11), Mabel_11 (A11), MadamMonkfish_33 (E), Magsby_29 (N), Malec_11 (A2), Maminaiaina_12 (A9), Manda_34 (E), Marshmallow_33 (E), Maverick_9 (A4), Maxo_9 (A4), Maxxinista_34 (E), Mazhar510_9 (A4), McFly_14 (A6), Medusa_9 (A4), MeeZee_9 (A4), Melville_29 (N), Melvin_9 (A4), Mendokysei_27 (T), MichelleMyBell_27 (N), MiculUcigas_10 (A2), Miko_13 (A2), Millski_9 (A4), Mindy_33 (E), MiniLon_27 (L3), MiniMac_27 (L3), Miniwave_33 (E), Miramae_9 (A4), Misfit_33 (E), MissWhite_10 (A2), Moldemort_34 (E), Moostard_27 (L3), Morpher26_9 (A4), Morrow_9 (A4), Mosby_32 (E), MsGreen_27 (L3), Mulciber_11 (A11), Munch_11 (A11), Mundrea_9 (A4), Murica_32 (E), Murphy_34 (E), MyraDee_8 (A18), Myrale_33 (E), Myxus_12 (A9), NaSiaTalie_10 (A2), Nairb_28 (T), Naji_13 (A2), Nala_33 (E), Nebs_9 (A4), Neeharika16_14 (A6), NelitzaMV_33 (E), Nemo27_9 (A4), Nenae_26 (N), Newrala_14 (A6), Nicholas_27 (L3), Nimrod_33 (E), NoSleep_34 (E), Noelle_9 (A4), NorthStar_9 (A4), NotAPhaseMom_9 (A4), NothingSpecial_12 (A2), Nyxis_9 (A4), OKaNui_9 (A4), Obama12_9 (A4), Ohfah_9 (A4), Orange_11 (A11), OrionPax_34 (E), PP_19 (A7), PackMan_12 (A9), Palestino_9 (A4), Palpatine_33 (E), Paperbeatsrock_35 (E), Parmesanjohn_29 (N), Pat3_32 (E), Peaches_9 (A4), Perplexer_9 (A4), PeterPeter_9 (A4), Petersenfast_10 (A11), PetiteSangsue_9 (A4), Petra64142_35 (E), Ph8s_12 (A2), Phacado_9 (A4), Phaded_13 (A2), Phaeder_12 (A9), Phaja_33 (E), PhancyPhin_26 (N), Pharsalus_34 (E), PhatBacter_33 (E), Phaux_32 (E), Phelipe_9 (A4), Phighter1804_9 (A4), Philonius_29 (N), Phlei_7 (A13), Phloss_26 (N), Phonnegut_12 (A9), Phontbonne_9 (A4), Phrux_33 (E), Pioneer_12 (A9), Pipcraft_9 (A4), Pipsqueaks_29 (N), Piro94_11 (A2), Pmask_14 (A6), Policronamos_34 (E), Polymorphads_9 (A4), Pomar16_13 (A2), Porky_33 (E), Power_10 (A2), Priamo_14 (A6), Priya_12 (A9), Pumbaa_9 (A4), Pumpkin_35 (E), Purgamenstris_26 (N), Qobbit_12 (A9), Qualification_34 (E), QueenBeesly_10 (A2), Rachaly_13 (A2), Rakim_34 (E), Raymond7_26 (N), Rebel_26 (N), Redi_26 (N), Relief_9 (A4), Rifter_14 (A6), Rimmer_32 (E), RiverMonster_33 (E), Roksolana_14 (A6), Romney_9 (A4), RonRayGun_28 (T), Roosevelt_9 (A4), Ruin_9 (A4), Sabertooth_9 (A4), Saints25_34 (E), Salz_11 (A11), Samty_27 (L3), Sassay_32 (E), Scamp_9 (A4), Scherzo_12 (A9), Schnauzer_29 (N), Scitech_26 (N), SemperFi_12 (A2), Serenity_9 (A2), Shaka_9 (A4), Sham4_11 (A11), ShamWow_33 (E), SheaKeira_11 (A9), SheldonCooper_9 (A4), ShereKhan_35 (E), ShrimpFriedEgg_26 (N), Shweta_26 (N), Shygu2_9 (A4), Silvafighter_29 (N), Silvy_29 (N), Simpliphy_34 (E), SirDuracell_32 (E), SkinnyPete_26 (N), Skipitt_9 (A4), Smeagan_12 (A2), SmellyB_14 (A6), Smurph_29 (N), SnapTap_10 (A2), Snape_11 (A11), Snekmaggedon_26 (N), Snenia_27 (L3), SophKB_33 (E), SororFago_10 (A14), Sotrice96_33 (E), Sparxx_9 (A4), Spino_9 (A4), SpongeBob_26 (N), Spouty_11 (A9), Stank_36 (E), StarStuff_13 (A2), Stark_34 (E), Stasia_10 (A4), StellaBean_33 (E), Stink_9 (A4), StolenFromERC_35 (E), SuperAwesome_14 (A6), SuperCallie99_14 (A6), Superchunk_10 (A2), SweetiePie_10 (A2), SwirlSquare_13 (A2), TBrady12_35 (E), Tapioca_29 (N), Taquarus_9 (A4), Tarkin_35 (E), TarsusIV_10 (A2), TeardropMSU_32 (E), Teaspoon_34 (E), Terminus_33 (E), Thanksgivukkah_9 (A4), Thresher_34 (E), Timothy_11 (A11), TinaFeyge_9 (A4), TinyTimmy_10 (A11), Tinybot_8 (A4), TipsytheTRex_9 (A2), TiroTheta9_9 (A4), Toaka_10 (A9), Tomaszewski_32 (E), Tomathan_13 (A2), ToneTone_13 (A6), Tortellini_27 (P2), Toto_33 (E), Traaww1_31 (E), TroyPia_9 (A4), Tubs_12 (A9), Tucker_14 (A6),

Tuco_34 (E), Turbido_12 (A2), TygerBlood_9 (A4), Ugenie5_9 (A9), Ukulele_33 (E), Ulysses_8 (A4), Updawg_12 (A2), VA6_10 (A2), VC3_13 (A2), Vanisoa_10 (A9), VohminGhazi_14 (A6), Wander_9 (A4), Whabigail7_12 (A2), Whirlwind_28 (L3), Whitty_28 (T), WideWale_12 (A2), Wiggin_36 (E), Wiks_14 (A6), Wilbur_9 (A4), Wile_9 (A4), Willez_32 (E), Wizard007_9 (A4), WunderPhul_14 (A6), Xandras_35 (E), Xena_9 (A4), Xeno_28 (N), Xerxes_29 (N), XianYue_10 (A2), YassJohnny_34 (E), Yecey3_11 (A9), YoSam321_9 (A4), Yokurt_14 (A6), Youngblood_33 (E), Zaka_14 (A6), ZenTime222_28 (T), Zulu_14 (A6), xkcd_34 (E),

Summary by clusters:

There are 19 clusters represented in this pham: A20, A14, P1, A11, A13, L3, F3, P2, A18, N, A2, A, A4, A7, A6, A9, E, P6, T,

Info for manual annotations of cluster A:

- Start number 27 was manually annotated 1 time for cluster A.

Info for manual annotations of cluster A11:

- Start number 27 was manually annotated 23 times for cluster A11.

Info for manual annotations of cluster A14:

- Start number 27 was manually annotated 4 times for cluster A14.

Info for manual annotations of cluster A18:

- Start number 27 was manually annotated 1 time for cluster A18.

Info for manual annotations of cluster A2:

- Start number 25 was manually annotated 4 times for cluster A2.
- Start number 26 was manually annotated 1 time for cluster A2.
- Start number 27 was manually annotated 77 times for cluster A2.

Info for manual annotations of cluster A20:

- Start number 27 was manually annotated 1 time for cluster A20.

Info for manual annotations of cluster A4:

- Start number 27 was manually annotated 135 times for cluster A4.

Info for manual annotations of cluster A6:

- Start number 27 was manually annotated 40 times for cluster A6.

Info for manual annotations of cluster A7:

- Start number 25 was manually annotated 1 time for cluster A7.
- Start number 27 was manually annotated 1 time for cluster A7.

Info for manual annotations of cluster A9:

- Start number 27 was manually annotated 32 times for cluster A9.

Info for manual annotations of cluster E:

- Start number 27 was manually annotated 122 times for cluster E.

Info for manual annotations of cluster F3:

- Start number 25 was manually annotated 1 time for cluster F3.

Info for manual annotations of cluster L3:

- Start number 27 was manually annotated 16 times for cluster L3.

Info for manual annotations of cluster N:

- Start number 25 was manually annotated 1 time for cluster N.
- Start number 27 was manually annotated 34 times for cluster N.

Info for manual annotations of cluster P1:

- Start number 25 was manually annotated 1 time for cluster P1.

Info for manual annotations of cluster P2:

- Start number 27 was manually annotated 1 time for cluster P2.

Info for manual annotations of cluster P6:

- Start number 25 was manually annotated 1 time for cluster P6.

Info for manual annotations of cluster T:

- Start number 27 was manually annotated 7 times for cluster T.

Gene Information:

Gene: 20ES_10 Start: 5985, Stop: 6446, Start Num: 27

Candidate Starts for 20ES_10:

(18, 5817), (Start: 27 @5985 has 495 MA's), (35, 6054), (51, 6162), (58, 6213), (66, 6285), (67, 6288), (71, 6309),

Gene: 244_35 Start: 31427, Stop: 31810, Start Num: 27

Candidate Starts for 244_35:

(Start: 27 @31427 has 495 MA's), (37, 31505), (40, 31532), (49, 31595), (67, 31730), (79, 31769),

Gene: ABCat_32 Start: 31139, Stop: 31522, Start Num: 27

Candidate Starts for ABCat_32:

(Start: 27 @31139 has 495 MA's), (37, 31217), (40, 31244), (49, 31307), (67, 31442), (79, 31481),

Gene: AN3_10 Start: 5970, Stop: 6431, Start Num: 27

Candidate Starts for AN3_10:

(18, 5799), (Start: 27 @5970 has 495 MA's), (56, 6189), (64, 6252), (69, 6285),

Gene: AN9_13 Start: 6174, Stop: 6599, Start Num: 27

Candidate Starts for AN9_13:

(Start: 27 @6174 has 495 MA's), (56, 6393), (62, 6423),

Gene: ANI8_13 Start: 6174, Stop: 6599, Start Num: 27

Candidate Starts for ANI8_13:

(Start: 27 @6174 has 495 MA's), (56, 6393), (62, 6423),

Gene: AbbyPaige_12 Start: 6436, Stop: 6876, Start Num: 27

Candidate Starts for AbbyPaige_12:

(21, 6349), (Start: 27 @6436 has 495 MA's), (30, 6481), (71, 6760), (76, 6781),

Gene: AbbysRanger_9 Start: 5429, Stop: 5890, Start Num: 27

Candidate Starts for AbbysRanger_9:

(Start: 27 @5429 has 495 MA's), (35, 5498), (48, 5600), (59, 5663), (60, 5672), (65, 5723), (67, 5735), (89, 5858),

Gene: Abdiel_9 Start: 5420, Stop: 5881, Start Num: 27

Candidate Starts for Abdiel_9:

(Start: 27 @5420 has 495 MA's), (44, 5552), (51, 5597), (53, 5627), (56, 5642), (60, 5663), (66, 5723), (67, 5726),

Gene: Achebe_9 Start: 5429, Stop: 5878, Start Num: 27

Candidate Starts for Achebe_9:

(Start: 27 @5429 has 495 MA's), (35, 5498), (59, 5663), (60, 5672), (65, 5723), (67, 5735), (82, 5801), (87, 5846),

Gene: Adnama_36 Start: 31654, Stop: 32037, Start Num: 27

Candidate Starts for Adnama_36:

(Start: 27 @31654 has 495 MA's), (37, 31732), (40, 31759), (49, 31822), (67, 31957), (79, 31996),

Gene: Adzzy_12 Start: 5846, Stop: 6244, Start Num: 27

Candidate Starts for Adzzy_12:

(Start: 27 @5846 has 495 MA's), (58, 6086), (61, 6104), (68, 6170), (74, 6188),

Gene: Agape74_12 Start: 6436, Stop: 6876, Start Num: 27

Candidate Starts for Agape74_12:

(21, 6349), (Start: 27 @6436 has 495 MA's), (30, 6481), (71, 6760), (76, 6781),

Gene: Aggie_29 Start: 24340, Stop: 24744, Start Num: 27

Candidate Starts for Aggie_29:

(Start: 27 @24340 has 495 MA's), (63, 24598), (64, 24628), (72, 24670), (84, 24727),

Gene: Albee_9 Start: 5420, Stop: 5881, Start Num: 27

Candidate Starts for Albee_9:

(Start: 27 @5420 has 495 MA's), (44, 5552), (51, 5597), (53, 5627), (56, 5642), (60, 5663), (66, 5723), (67, 5726),

Gene: Alberto7_10 Start: 5725, Stop: 6186, Start Num: 27

Candidate Starts for Alberto7_10:

(Start: 27 @5725 has 495 MA's), (44, 5857), (51, 5902), (53, 5932), (56, 5947), (60, 5968), (66, 6028), (67, 6031),

Gene: Aliter_12 Start: 7651, Stop: 8037, Start Num: 27

Candidate Starts for Aliter_12:

(22, 7576), (Start: 27 @7651 has 495 MA's), (50, 7822), (57, 7882),

Gene: Alma_12 Start: 7730, Stop: 8116, Start Num: 27

Candidate Starts for Alma_12:

(22, 7655), (Start: 27 @7730 has 495 MA's), (50, 7901), (57, 7961),

Gene: Amao_33 Start: 30351, Stop: 30734, Start Num: 27

Candidate Starts for Amao_33:

(Start: 27 @30351 has 495 MA's), (37, 30429), (40, 30456), (49, 30519), (67, 30654), (79, 30693),

Gene: AmericanBeauty_36 Start: 31134, Stop: 31517, Start Num: 27
Candidate Starts for AmericanBeauty_36:
(Start: 27 @31134 has 495 MA's), (37, 31212), (40, 31239), (49, 31302), (67, 31437), (79, 31476),

Gene: Andies_26 Start: 23507, Stop: 23911, Start Num: 27
Candidate Starts for Andies_26:
(4, 22886), (5, 22889), (7, 22961), (10, 22982), (11, 23075), (12, 23102), (Start: 27 @23507 has 495 MA's), (63, 23765), (64, 23795), (72, 23837), (84, 23894),

Gene: Aneem_11 Start: 7621, Stop: 8007, Start Num: 27
Candidate Starts for Aneem_11:
(Start: 27 @7621 has 495 MA's), (35, 7690), (62, 7870), (69, 7936),

Gene: Annyong_9 Start: 5421, Stop: 5882, Start Num: 27
Candidate Starts for Annyong_9:
(Start: 27 @5421 has 495 MA's), (44, 5553), (51, 5598), (53, 5628), (56, 5643), (60, 5664), (66, 5724), (67, 5727),

Gene: Anthony_10 Start: 5261, Stop: 5653, Start Num: 27
Candidate Starts for Anthony_10:
(Start: 27 @5261 has 495 MA's), (47, 5414), (58, 5492), (61, 5510), (68, 5576), (85, 5642),

Gene: Argent26_35 Start: 31137, Stop: 31520, Start Num: 27
Candidate Starts for Argent26_35:
(Start: 27 @31137 has 495 MA's), (37, 31215), (40, 31242), (49, 31305), (67, 31440), (79, 31479),

Gene: Arissanae_10 Start: 5852, Stop: 6238, Start Num: 27
Candidate Starts for Arissanae_10:
(14, 5561), (22, 5777), (Start: 27 @5852 has 495 MA's), (52, 6053), (57, 6083),

Gene: Artemis2UCLA_14 Start: 6948, Stop: 7379, Start Num: 27
Candidate Starts for Artemis2UCLA_14:
(Start: 27 @6948 has 495 MA's), (56, 7167), (59, 7179), (60, 7188), (69, 7263),

Gene: Arturo_8 Start: 5531, Stop: 5992, Start Num: 27
Candidate Starts for Arturo_8:
(Start: 27 @5531 has 495 MA's), (44, 5663), (51, 5708), (53, 5738), (56, 5753), (60, 5774), (66, 5834), (67, 5837),

Gene: Asriel_32 Start: 30008, Stop: 30391, Start Num: 27
Candidate Starts for Asriel_32:
(Start: 27 @30008 has 495 MA's), (37, 30086), (40, 30113), (49, 30176), (67, 30311), (79, 30350),

Gene: AvatarAhPeg_9 Start: 5393, Stop: 5845, Start Num: 27
Candidate Starts for AvatarAhPeg_9:
(Start: 27 @5393 has 495 MA's), (35, 5462), (48, 5564), (51, 5570), (60, 5636), (67, 5699), (84, 5774),

Gene: Avle17_9 Start: 5420, Stop: 5881, Start Num: 27
Candidate Starts for Avle17_9:
(Start: 27 @5420 has 495 MA's), (44, 5552), (51, 5597), (53, 5627), (56, 5642), (60, 5663), (66, 5723), (67, 5726),

Gene: BABullseye_14 Start: 7065, Stop: 7499, Start Num: 27

Candidate Starts for BABullseye_14:

(Start: 27 @7065 has 495 MA's), (41, 7179), (56, 7284), (59, 7296), (60, 7305), (69, 7380),

Gene: BabeRuth_26 Start: 23389, Stop: 23793, Start Num: 27

Candidate Starts for BabeRuth_26:

(4, 22768), (5, 22771), (7, 22843), (10, 22864), (11, 22957), (12, 22984), (Start: 27 @23389 has 495 MA's), (49, 23563), (78, 23752),

Gene: BaboJay_32 Start: 30697, Stop: 31080, Start Num: 27

Candidate Starts for BaboJay_32:

(Start: 27 @30697 has 495 MA's), (37, 30775), (40, 30802), (49, 30865), (67, 31000), (79, 31039),

Gene: Baby16_9 Start: 5429, Stop: 5890, Start Num: 27

Candidate Starts for Baby16_9:

(Start: 27 @5429 has 495 MA's), (44, 5561), (51, 5606), (53, 5636), (56, 5651), (60, 5672), (66, 5732), (67, 5735),

Gene: BabyBack_12 Start: 7641, Stop: 8111, Start Num: 27

Candidate Starts for BabyBack_12:

(18, 7464), (Start: 27 @7641 has 495 MA's), (56, 7860), (59, 7872), (71, 7965),

Gene: Bachome_11 Start: 7618, Stop: 8004, Start Num: 27

Candidate Starts for Bachome_11:

(Start: 27 @7618 has 495 MA's), (35, 7687), (62, 7867), (69, 7933),

Gene: Backyardigan_9 Start: 5429, Stop: 5890, Start Num: 27

Candidate Starts for Backyardigan_9:

(Start: 27 @5429 has 495 MA's), (35, 5498), (59, 5663), (60, 5672), (65, 5723), (67, 5735), (89, 5858),

Gene: Bactobuster_11 Start: 7711, Stop: 8190, Start Num: 25

Candidate Starts for Bactobuster_11:

(Start: 25 @7711 has 9 MA's), (51, 7888), (56, 7930), (59, 7942), (71, 8035),

Gene: BadStone_32 Start: 31139, Stop: 31522, Start Num: 27

Candidate Starts for BadStone_32:

(Start: 27 @31139 has 495 MA's), (37, 31217), (40, 31244), (49, 31307), (67, 31442), (79, 31481),

Gene: Badger_9 Start: 5430, Stop: 5879, Start Num: 27

Candidate Starts for Badger_9:

(Start: 27 @5430 has 495 MA's), (35, 5499), (59, 5664), (60, 5673), (65, 5724), (67, 5736), (82, 5802), (87, 5847),

Gene: Baehexic_11 Start: 6510, Stop: 6947, Start Num: 27

Candidate Starts for Baehexic_11:

(21, 6414), (Start: 27 @6510 has 495 MA's), (30, 6555), (66, 6810), (71, 6834),

Gene: Balomoji_32 Start: 30873, Stop: 31256, Start Num: 27

Candidate Starts for Balomoji_32:

(Start: 27 @30873 has 495 MA's), (37, 30951), (40, 30978), (49, 31041), (67, 31176), (79, 31215),

Gene: BangNhom_8 Start: 5406, Stop: 5858, Start Num: 27

Candidate Starts for BangNhom_8:

(21, 5313), (Start: 27 @5406 has 495 MA's), (35, 5475), (48, 5577), (51, 5583), (60, 5649), (67, 5712), (84, 5787),

Gene: Barbarian_32 Start: 30008, Stop: 30391, Start Num: 27

Candidate Starts for Barbarian_32:

(Start: 27 @30008 has 495 MA's), (37, 30086), (40, 30113), (49, 30176), (67, 30311), (79, 30350),

Gene: Bartimeaus_9 Start: 5420, Stop: 5881, Start Num: 27

Candidate Starts for Bartimeaus_9:

(Start: 27 @5420 has 495 MA's), (44, 5552), (51, 5597), (53, 5627), (56, 5642), (60, 5663), (66, 5723), (67, 5726),

Gene: Bask21_33 Start: 30325, Stop: 30708, Start Num: 27

Candidate Starts for Bask21_33:

(Start: 27 @30325 has 495 MA's), (37, 30403), (40, 30430), (49, 30493), (67, 30628), (79, 30667),

Gene: Beemo_12 Start: 7757, Stop: 8143, Start Num: 27

Candidate Starts for Beemo_12:

(22, 7682), (Start: 27 @7757 has 495 MA's), (50, 7928), (57, 7988),

Gene: Bellis_27 Start: 26437, Stop: 26853, Start Num: 27

Candidate Starts for Bellis_27:

(Start: 27 @26437 has 495 MA's), (30, 26482), (32, 26494), (35, 26506), (44, 26569), (58, 26668), (62, 26689), (81, 26794),

Gene: BellusTerra_9 Start: 5420, Stop: 5881, Start Num: 27

Candidate Starts for BellusTerra_9:

(Start: 27 @5420 has 495 MA's), (44, 5552), (51, 5597), (53, 5627), (56, 5642), (60, 5663), (66, 5723), (67, 5726),

Gene: Bench_35 Start: 31007, Stop: 31390, Start Num: 27

Candidate Starts for Bench_35:

(Start: 27 @31007 has 495 MA's), (37, 31085), (40, 31112), (49, 31175), (67, 31310), (79, 31349),

Gene: BengiVuitton_11 Start: 6419, Stop: 6868, Start Num: 27

Candidate Starts for BengiVuitton_11:

(18, 6257), (Start: 27 @6419 has 495 MA's), (56, 6638), (62, 6668), (69, 6734), (76, 6764),

Gene: Benvolio_10 Start: 6083, Stop: 6544, Start Num: 27

Candidate Starts for Benvolio_10:

(18, 5912), (Start: 27 @6083 has 495 MA's), (56, 6302), (64, 6365), (69, 6398),

Gene: Bernal13_28 Start: 25159, Stop: 25599, Start Num: 27

Candidate Starts for Bernal13_28:

(16, 24922), (21, 25063), (23, 25141), (Start: 27 @25159 has 495 MA's), (43, 25288), (51, 25336), (59, 25393), (65, 25453), (67, 25465), (75, 25489), (88, 25579), (90, 25594),

Gene: BiancaTri92_12 Start: 7749, Stop: 8213, Start Num: 27

Candidate Starts for BiancaTri92_12:

(21, 7656), (Start: 27 @7749 has 495 MA's), (35, 7818), (56, 7971), (58, 7980), (66, 8052), (71, 8076),

Gene: BigBubba_34 Start: 30910, Stop: 31293, Start Num: 27

Candidate Starts for BigBubba_34:

(Start: 27 @30910 has 495 MA's), (37, 30988), (40, 31015), (49, 31078), (67, 31213), (79, 31252),

Gene: BilboSwaggins_33 Start: 31147, Stop: 31530, Start Num: 27

Candidate Starts for BilboSwaggins_33:

(Start: 27 @31147 has 495 MA's), (37, 31225), (40, 31252), (49, 31315), (67, 31450), (79, 31489),

Gene: Blackmoor_9 Start: 5420, Stop: 5881, Start Num: 27

Candidate Starts for Blackmoor_9:

(Start: 27 @5420 has 495 MA's), (44, 5552), (51, 5597), (53, 5627), (56, 5642), (60, 5663), (66, 5723), (67, 5726),

Gene: Blinn1_14 Start: 7098, Stop: 7529, Start Num: 27

Candidate Starts for Blinn1_14:

(Start: 27 @7098 has 495 MA's), (56, 7317), (59, 7329), (60, 7338), (62, 7347), (69, 7413),

Gene: Blue7_14 Start: 7039, Stop: 7470, Start Num: 27

Candidate Starts for Blue7_14:

(Start: 27 @7039 has 495 MA's), (56, 7258), (59, 7270), (60, 7279), (69, 7354),

Gene: BobSwaget_13 Start: 7689, Stop: 8114, Start Num: 27

Candidate Starts for BobSwaget_13:

(21, 7596), (Start: 27 @7689 has 495 MA's), (30, 7734), (48, 7860), (56, 7908), (62, 7938),

Gene: BogosyJay_12 Start: 7514, Stop: 7900, Start Num: 27

Candidate Starts for BogosyJay_12:

(22, 7439), (Start: 27 @7514 has 495 MA's), (31, 7565), (33, 7574), (49, 7682), (57, 7745), (73, 7844),

Gene: Bombshell_9 Start: 5420, Stop: 5881, Start Num: 27

Candidate Starts for Bombshell_9:

(Start: 27 @5420 has 495 MA's), (44, 5552), (51, 5597), (53, 5627), (56, 5642), (60, 5663), (66, 5723), (67, 5726),

Gene: Bosection6_29 Start: 24339, Stop: 24743, Start Num: 27

Candidate Starts for Bosection6_29:

(Start: 27 @24339 has 495 MA's), (63, 24597), (64, 24627), (72, 24669), (84, 24726),

Gene: Bowtie_11 Start: 7621, Stop: 8007, Start Num: 27

Candidate Starts for Bowtie_11:

(Start: 27 @7621 has 495 MA's), (35, 7690), (62, 7870), (69, 7936),

Gene: Broseidon_9 Start: 5420, Stop: 5881, Start Num: 27

Candidate Starts for Broseidon_9:

(Start: 27 @5420 has 495 MA's), (44, 5552), (51, 5597), (53, 5627), (56, 5642), (60, 5663), (66, 5723), (67, 5726),

Gene: Bruin_33 Start: 31167, Stop: 31550, Start Num: 27

Candidate Starts for Bruin_33:

(Start: 27 @31167 has 495 MA's), (37, 31245), (40, 31272), (49, 31335), (67, 31470), (79, 31509),

Gene: Bruiser_9 Start: 5420, Stop: 5881, Start Num: 27

Candidate Starts for Bruiser_9:

(Start: 27 @5420 has 495 MA's), (44, 5552), (51, 5597), (53, 5627), (56, 5642), (60, 5663), (66, 5723), (67, 5726),

Gene: BubbleTrouble_9 Start: 5420, Stop: 5881, Start Num: 27

Candidate Starts for BubbleTrouble_9:

(Start: 27 @5420 has 495 MA's), (44, 5552), (51, 5597), (53, 5627), (56, 5642), (60, 5663), (66, 5723), (67, 5726),

Gene: Buck_32 Start: 31103, Stop: 31486, Start Num: 27

Candidate Starts for Buck_32:

(Start: 27 @31103 has 495 MA's), (37, 31181), (40, 31208), (49, 31271), (67, 31406), (79, 31445),

Gene: Bud_11 Start: 7627, Stop: 8013, Start Num: 27

Candidate Starts for Bud_11:

(Start: 27 @7627 has 495 MA's), (35, 7696), (62, 7876), (69, 7942),

Gene: BugsBunny_31 Start: 30736, Stop: 31119, Start Num: 27

Candidate Starts for BugsBunny_31:

(Start: 27 @30736 has 495 MA's), (37, 30814), (40, 30841), (49, 30904), (67, 31039), (79, 31078),

Gene: Buggy_12 Start: 6435, Stop: 6875, Start Num: 27

Candidate Starts for Buggy_12:

(21, 6348), (Start: 27 @6435 has 495 MA's), (30, 6480), (71, 6759), (76, 6780),

Gene: Bumblebee11_9 Start: 5429, Stop: 5890, Start Num: 27

Candidate Starts for Bumblebee11_9:

(Start: 27 @5429 has 495 MA's), (35, 5498), (48, 5600), (59, 5663), (60, 5672), (65, 5723), (67, 5735), (89, 5858),

Gene: Burger_8 Start: 5420, Stop: 5881, Start Num: 27

Candidate Starts for Burger_8:

(Start: 27 @5420 has 495 MA's), (44, 5552), (51, 5597), (53, 5627), (56, 5642), (60, 5663), (66, 5723), (67, 5726),

Gene: C3_08 Start: 6174, Stop: 6599, Start Num: 27

Candidate Starts for C3_08:

(Start: 27 @6174 has 495 MA's), (56, 6393), (62, 6423),

Gene: CRB1_10 Start: 5971, Stop: 6411, Start Num: 27

Candidate Starts for CRB1_10:

(Start: 27 @5971 has 495 MA's), (30, 6016), (45, 6109), (51, 6148), (66, 6271), (71, 6295),

Gene: Cactus_34 Start: 30358, Stop: 30741, Start Num: 27

Candidate Starts for Cactus_34:

(Start: 27 @30358 has 495 MA's), (37, 30436), (40, 30463), (49, 30526), (67, 30661), (79, 30700),

Gene: Caelakin_9 Start: 5420, Stop: 5881, Start Num: 27

Candidate Starts for Caelakin_9:

(Start: 27 @5420 has 495 MA's), (44, 5552), (51, 5597), (53, 5627), (56, 5642), (60, 5663), (66, 5723), (67, 5726),

Gene: Camperdownii_8 Start: 5046, Stop: 5498, Start Num: 27

Candidate Starts for Camperdownii_8:

(21, 4953), (Start: 27 @5046 has 495 MA's), (35, 5115), (48, 5217), (51, 5223), (60, 5289), (67, 5352), (84, 5427),

Gene: Candra_14 Start: 7098, Stop: 7529, Start Num: 27

Candidate Starts for Candra_14:

(Start: 27 @7098 has 495 MA's), (56, 7317), (59, 7329), (60, 7338), (69, 7413),

Gene: Caraxes_10 Start: 5746, Stop: 6141, Start Num: 27

Candidate Starts for Caraxes_10:

(Start: 27 @5746 has 495 MA's), (58, 5986), (61, 6004), (68, 6070), (74, 6088),

Gene: Carcharodon_29 Start: 24339, Stop: 24743, Start Num: 27

Candidate Starts for Carcharodon_29:

(Start: 27 @24339 has 495 MA's), (63, 24597), (64, 24627), (72, 24669), (84, 24726),

Gene: Catalina_12 Start: 7724, Stop: 8110, Start Num: 27

Candidate Starts for Catalina_12:

(22, 7649), (Start: 27 @7724 has 495 MA's), (50, 7895), (57, 7955),

Gene: Centaur_12 Start: 6489, Stop: 6926, Start Num: 27

Candidate Starts for Centaur_12:

(21, 6393), (Start: 27 @6489 has 495 MA's), (30, 6534), (66, 6789), (71, 6813),

Gene: CentreCat_9 Start: 5421, Stop: 5882, Start Num: 27

Candidate Starts for CentreCat_9:

(Start: 27 @5421 has 495 MA's), (44, 5553), (51, 5598), (53, 5628), (56, 5643), (60, 5664), (66, 5724), (67, 5727),

Gene: Cerulean_9 Start: 5407, Stop: 5859, Start Num: 27

Candidate Starts for Cerulean_9:

(21, 5314), (Start: 27 @5407 has 495 MA's), (35, 5476), (48, 5578), (51, 5584), (60, 5650), (67, 5713), (84, 5788),

Gene: ChampagnePapi_9 Start: 5406, Stop: 5858, Start Num: 27

Candidate Starts for ChampagnePapi_9:

(21, 5313), (Start: 27 @5406 has 495 MA's), (35, 5475), (48, 5577), (51, 5583), (60, 5649), (67, 5712), (84, 5787),

Gene: Chaph_9 Start: 5429, Stop: 5890, Start Num: 27

Candidate Starts for Chaph_9:

(Start: 27 @5429 has 495 MA's), (44, 5561), (51, 5606), (53, 5636), (56, 5651), (60, 5672), (66, 5732), (67, 5735),

Gene: Chargerpower_11 Start: 6184, Stop: 6570, Start Num: 27

Candidate Starts for Chargerpower_11:

(14, 5893), (15, 5938), (20, 6049), (Start: 27 @6184 has 495 MA's), (49, 6352), (63, 6442), (68, 6502),

Gene: Charlie_29 Start: 24339, Stop: 24743, Start Num: 27

Candidate Starts for Charlie_29:

(Start: 27 @24339 has 495 MA's), (63, 24597), (64, 24627), (72, 24669), (84, 24726),

Gene: Charm_11 Start: 5913, Stop: 6296, Start Num: 27

Candidate Starts for Charm_11:

(14, 5622), (15, 5667), (20, 5778), (Start: 27 @5913 has 495 MA's), (32, 5970), (46, 6054),

Gene: Chartreuse_14 Start: 7012, Stop: 7443, Start Num: 27

Candidate Starts for Chartreuse_14:

(Start: 27 @7012 has 495 MA's), (56, 7231), (59, 7243), (60, 7252), (69, 7327),

Gene: Che12_12 Start: 5840, Stop: 6238, Start Num: 27

Candidate Starts for Che12_12:

(Start: 27 @5840 has 495 MA's), (58, 6080), (61, 6098), (68, 6164), (74, 6182),

Gene: Chewbacca_29 Start: 24339, Stop: 24743, Start Num: 27

Candidate Starts for Chewbacca_29:

(Start: 27 @24339 has 495 MA's), (63, 24597), (64, 24627), (72, 24669), (84, 24726),

Gene: ChipMunk_12 Start: 6373, Stop: 6813, Start Num: 27

Candidate Starts for ChipMunk_12:

(Start: 27 @6373 has 495 MA's), (30, 6418), (66, 6673), (71, 6697), (76, 6718),

Gene: ChosenOne_33 Start: 30355, Stop: 30738, Start Num: 27

Candidate Starts for ChosenOne_33:

(Start: 27 @30355 has 495 MA's), (37, 30433), (40, 30460), (49, 30523), (67, 30658), (79, 30697),

Gene: ChotaBhai_33 Start: 30393, Stop: 30776, Start Num: 27

Candidate Starts for ChotaBhai_33:

(Start: 27 @30393 has 495 MA's), (37, 30471), (40, 30498), (49, 30561), (67, 30696), (79, 30735),

Gene: Cici_9 Start: 5429, Stop: 5878, Start Num: 27

Candidate Starts for Cici_9:

(Start: 27 @5429 has 495 MA's), (35, 5498), (59, 5663), (60, 5672), (65, 5723), (67, 5735), (82, 5801), (87, 5846),

Gene: Cindaradix_8 Start: 5135, Stop: 5587, Start Num: 27

Candidate Starts for Cindaradix_8:

(21, 5042), (Start: 27 @5135 has 495 MA's), (35, 5204), (48, 5306), (51, 5312), (60, 5378), (67, 5441), (84, 5516),

Gene: Cintron_9 Start: 5501, Stop: 5926, Start Num: 27

Candidate Starts for Cintron_9:

(21, 5408), (24, 5486), (Start: 27 @5501 has 495 MA's), (51, 5678), (70, 5825), (74, 5837), (87, 5891),

Gene: Citius_9 Start: 5420, Stop: 5881, Start Num: 27

Candidate Starts for Citius_9:

(Start: 27 @5420 has 495 MA's), (44, 5552), (51, 5597), (53, 5627), (56, 5642), (60, 5663), (66, 5723), (67, 5726),

Gene: Cjw1_33 Start: 31907, Stop: 32290, Start Num: 27

Candidate Starts for Cjw1_33:

(Start: 27 @31907 has 495 MA's), (37, 31985), (40, 32012), (49, 32075), (67, 32210), (79, 32249),

Gene: Clarenza_9 Start: 5420, Stop: 5881, Start Num: 27

Candidate Starts for Clarenza_9:

(Start: 27 @5420 has 495 MA's), (44, 5552), (51, 5597), (53, 5627), (56, 5642), (60, 5663), (66, 5723), (67, 5726),

Gene: Clautastrophe_27 Start: 26434, Stop: 26850, Start Num: 27

Candidate Starts for Clautastrophe_27:

(Start: 27 @26434 has 495 MA's), (30, 26479), (32, 26491), (35, 26503), (44, 26566), (58, 26665), (62, 26686), (81, 26791),

Gene: CloudWang3_14 Start: 7043, Stop: 7474, Start Num: 27

Candidate Starts for CloudWang3_14:

(Start: 27 @7043 has 495 MA's), (56, 7262), (59, 7274), (60, 7283), (69, 7358),

Gene: Cocoaberry_9 Start: 5424, Stop: 5885, Start Num: 27

Candidate Starts for Cocoaberry_9:

(Start: 27 @5424 has 495 MA's), (44, 5556), (51, 5601), (53, 5631), (56, 5646), (60, 5667), (66, 5727), (67, 5730),

Gene: Command613_34 Start: 31414, Stop: 31797, Start Num: 27

Candidate Starts for Command613_34:

(Start: 27 @31414 has 495 MA's), (37, 31492), (40, 31519), (49, 31582), (67, 31717), (79, 31756),

Gene: Commander_9 Start: 5420, Stop: 5881, Start Num: 27

Candidate Starts for Commander_9:

(Start: 27 @5420 has 495 MA's), (44, 5552), (51, 5597), (53, 5627), (56, 5642), (60, 5663), (66, 5723), (67, 5726),

Gene: Connomayer_9 Start: 5420, Stop: 5881, Start Num: 27

Candidate Starts for Connomayer_9:

(Start: 27 @5420 has 495 MA's), (44, 5552), (51, 5597), (53, 5627), (56, 5642), (60, 5663), (66, 5723), (67, 5726),

Gene: Conquerage_12 Start: 7753, Stop: 8139, Start Num: 27

Candidate Starts for Conquerage_12:

(22, 7678), (Start: 27 @7753 has 495 MA's), (50, 7924), (57, 7984),

Gene: Contagion_32 Start: 30651, Stop: 31034, Start Num: 27

Candidate Starts for Contagion_32:

(Start: 27 @30651 has 495 MA's), (37, 30729), (40, 30756), (49, 30819), (67, 30954), (79, 30993),

Gene: Cookiedough_14 Start: 7065, Stop: 7499, Start Num: 27

Candidate Starts for Cookiedough_14:

(Start: 27 @7065 has 495 MA's), (41, 7179), (56, 7284), (59, 7296), (60, 7305), (69, 7380),

Gene: Cookies_33 Start: 31016, Stop: 31399, Start Num: 27

Candidate Starts for Cookies_33:

(Start: 27 @31016 has 495 MA's), (37, 31094), (40, 31121), (49, 31184), (67, 31319), (79, 31358),

Gene: Crucio_10 Start: 5938, Stop: 6375, Start Num: 27

Candidate Starts for Crucio_10:

(21, 5842), (Start: 27 @5938 has 495 MA's), (31, 5992), (51, 6115), (56, 6157), (60, 6178), (67, 6241), (79, 6283), (84, 6304),

Gene: CrystalP_33 Start: 31147, Stop: 31530, Start Num: 27

Candidate Starts for CrystalP_33:

(Start: 27 @31147 has 495 MA's), (37, 31225), (40, 31252), (49, 31315), (67, 31450), (79, 31489),

Gene: Czyszczonek_34 Start: 30892, Stop: 31275, Start Num: 27

Candidate Starts for Czyszczone1_34:
(Start: 27 @30892 has 495 MA's), (37, 30970), (40, 30997), (49, 31060), (67, 31195), (79, 31234),

Gene: D29_11 Start: 6175, Stop: 6600, Start Num: 27
Candidate Starts for D29_11:
(Start: 27 @6175 has 495 MA's), (56, 6394), (62, 6424),

Gene: D32_13 Start: 6175, Stop: 6600, Start Num: 27
Candidate Starts for D32_13:
(Start: 27 @6175 has 495 MA's), (56, 6394), (62, 6424),

Gene: DBQu4n_13 Start: 6175, Stop: 6600, Start Num: 27
Candidate Starts for DBQu4n_13:
(Start: 27 @6175 has 495 MA's), (56, 6394), (62, 6424),

Gene: DaVinci_14 Start: 7066, Stop: 7497, Start Num: 27
Candidate Starts for DaVinci_14:
(Start: 27 @7066 has 495 MA's), (56, 7285), (59, 7297), (60, 7306), (69, 7381),

Gene: Daikon_32 Start: 30885, Stop: 31268, Start Num: 27
Candidate Starts for Daikon_32:
(Start: 27 @30885 has 495 MA's), (37, 30963), (40, 30990), (67, 31188), (79, 31227),

Gene: Darrell_13 Start: 7946, Stop: 8335, Start Num: 27
Candidate Starts for Darrell_13:
(Start: 27 @7946 has 495 MA's), (34, 8009), (49, 8114), (61, 8201), (63, 8207),

Gene: Datway_9 Start: 5429, Stop: 5890, Start Num: 27
Candidate Starts for Datway_9:
(Start: 27 @5429 has 495 MA's), (35, 5498), (59, 5663), (60, 5672), (65, 5723), (67, 5735), (89, 5858),

Gene: Deano_9 Start: 5426, Stop: 5887, Start Num: 27
Candidate Starts for Deano_9:
(Start: 27 @5426 has 495 MA's), (44, 5558), (51, 5603), (53, 5633), (56, 5648), (60, 5669), (66, 5729), (67, 5732),

Gene: Deloris_11 Start: 6419, Stop: 6868, Start Num: 27
Candidate Starts for Deloris_11:
(Start: 27 @6419 has 495 MA's), (56, 6638), (62, 6668), (69, 6734), (76, 6764),

Gene: Dhanush_9 Start: 5423, Stop: 5884, Start Num: 27
Candidate Starts for Dhanush_9:
(Start: 27 @5423 has 495 MA's), (44, 5555), (51, 5600), (53, 5630), (56, 5645), (60, 5666), (66, 5726), (67, 5729),

Gene: Dignity_12 Start: 6380, Stop: 6820, Start Num: 27
Candidate Starts for Dignity_12:
(21, 6293), (Start: 27 @6380 has 495 MA's), (30, 6425), (71, 6704), (76, 6725),

Gene: DirtyDunning_9 Start: 5425, Stop: 5877, Start Num: 27
Candidate Starts for DirtyDunning_9:
(Start: 27 @5425 has 495 MA's), (44, 5557), (51, 5602), (60, 5668), (67, 5731), (84, 5806), (87, 5836),

Gene: DoctorDiddles_33 Start: 30309, Stop: 30692, Start Num: 27
Candidate Starts for DoctorDiddles_33:
(Start: 27 @30309 has 495 MA's), (37, 30387), (40, 30414), (49, 30477), (67, 30612), (79, 30651),

Gene: Dorothea_13 Start: 7065, Stop: 7496, Start Num: 27
Candidate Starts for Dorothea_13:
(Start: 27 @7065 has 495 MA's), (56, 7284), (59, 7296), (60, 7305), (69, 7380),

Gene: DrDrey_34 Start: 31639, Stop: 32022, Start Num: 27
Candidate Starts for DrDrey_34:
(Start: 27 @31639 has 495 MA's), (37, 31717), (40, 31744), (49, 31807), (67, 31942), (79, 31981),

Gene: Drake55_12 Start: 6506, Stop: 6943, Start Num: 27
Candidate Starts for Drake55_12:
(21, 6410), (Start: 27 @6506 has 495 MA's), (30, 6551), (66, 6806), (71, 6830),

Gene: DreamTeam1_11 Start: 5913, Stop: 6296, Start Num: 27
Candidate Starts for DreamTeam1_11:
(14, 5622), (15, 5667), (20, 5778), (Start: 27 @5913 has 495 MA's), (32, 5970), (46, 6054),

Gene: Druantia_9 Start: 5421, Stop: 5882, Start Num: 27
Candidate Starts for Druantia_9:
(Start: 27 @5421 has 495 MA's), (44, 5553), (51, 5598), (53, 5628), (56, 5643), (60, 5664), (66, 5724),
(67, 5727),

Gene: Dumbo_33 Start: 30614, Stop: 30997, Start Num: 27
Candidate Starts for Dumbo_33:
(Start: 27 @30614 has 495 MA's), (37, 30692), (40, 30719), (49, 30782), (67, 30917), (79, 30956),

Gene: DuncansLeg_27 Start: 26417, Stop: 26833, Start Num: 27
Candidate Starts for DuncansLeg_27:
(Start: 27 @26417 has 495 MA's), (30, 26462), (32, 26474), (35, 26486), (62, 26669), (81, 26774),

Gene: Duplicity_29 Start: 24339, Stop: 24743, Start Num: 27
Candidate Starts for Duplicity_29:
(Start: 27 @24339 has 495 MA's), (63, 24597), (64, 24627), (72, 24669), (84, 24726),

Gene: Duplo_13 Start: 6216, Stop: 6641, Start Num: 27
Candidate Starts for Duplo_13:
(Start: 27 @6216 has 495 MA's), (56, 6435), (62, 6465),

Gene: Dusk_32 Start: 30799, Stop: 31182, Start Num: 27
Candidate Starts for Dusk_32:
(Start: 27 @30799 has 495 MA's), (37, 30877), (40, 30904), (49, 30967), (67, 31102), (79, 31141),

Gene: Eagle_8 Start: 5420, Stop: 5881, Start Num: 27
Candidate Starts for Eagle_8:
(Start: 27 @5420 has 495 MA's), (44, 5552), (51, 5597), (53, 5627), (56, 5642), (60, 5663), (66, 5723),
(67, 5726),

Gene: Eapen_9 Start: 5422, Stop: 5883, Start Num: 27
Candidate Starts for Eapen_9:

(Start: 27 @5422 has 495 MA's), (44, 5554), (51, 5599), (53, 5629), (56, 5644), (60, 5665), (66, 5725), (67, 5728),

Gene: Easy2Say_35 Start: 32397, Stop: 32780, Start Num: 27

Candidate Starts for Easy2Say_35:

(Start: 27 @32397 has 495 MA's), (37, 32475), (40, 32502), (49, 32565), (67, 32700), (79, 32739),

Gene: Ebony_11 Start: 7679, Stop: 8065, Start Num: 27

Candidate Starts for Ebony_11:

(Start: 27 @7679 has 495 MA's), (35, 7748), (62, 7928), (69, 7994),

Gene: Echild_10 Start: 6083, Stop: 6544, Start Num: 27

Candidate Starts for Echild_10:

(18, 5912), (Start: 27 @6083 has 495 MA's), (56, 6302), (64, 6365), (69, 6398),

Gene: Eidsmoe_12 Start: 7753, Stop: 8139, Start Num: 27

Candidate Starts for Eidsmoe_12:

(22, 7678), (Start: 27 @7753 has 495 MA's), (50, 7924), (57, 7984),

Gene: Elephantoon_12 Start: 7375, Stop: 7764, Start Num: 27

Candidate Starts for Elephantoon_12:

(22, 7300), (Start: 27 @7375 has 495 MA's), (49, 7543), (61, 7630), (63, 7636),

Gene: Elite2014_32 Start: 30354, Stop: 30737, Start Num: 27

Candidate Starts for Elite2014_32:

(Start: 27 @30354 has 495 MA's), (37, 30432), (40, 30459), (49, 30522), (67, 30657), (79, 30696),

Gene: Ellson_27 Start: 26404, Stop: 26820, Start Num: 27

Candidate Starts for Ellson_27:

(Start: 27 @26404 has 495 MA's), (30, 26449), (32, 26461), (35, 26473), (62, 26656), (81, 26761),

Gene: Elph10_34 Start: 30617, Stop: 31000, Start Num: 27

Candidate Starts for Elph10_34:

(Start: 27 @30617 has 495 MA's), (37, 30695), (40, 30722), (49, 30785), (67, 30920), (79, 30959),

Gene: Emmina_34 Start: 30975, Stop: 31358, Start Num: 27

Candidate Starts for Emmina_34:

(Start: 27 @30975 has 495 MA's), (37, 31053), (40, 31080), (49, 31143), (67, 31278), (79, 31317),

Gene: EmyBug_12 Start: 7753, Stop: 8139, Start Num: 27

Candidate Starts for EmyBug_12:

(22, 7678), (Start: 27 @7753 has 495 MA's), (50, 7924), (57, 7984),

Gene: Equemioh13_12 Start: 6492, Stop: 6929, Start Num: 27

Candidate Starts for Equemioh13_12:

(21, 6396), (Start: 27 @6492 has 495 MA's), (30, 6537), (66, 6792), (71, 6816),

Gene: EricB_14 Start: 7066, Stop: 7500, Start Num: 27

Candidate Starts for EricB_14:

(Start: 27 @7066 has 495 MA's), (41, 7180), (56, 7285), (59, 7297), (60, 7306), (69, 7381),

Gene: Eris_9 Start: 5420, Stop: 5881, Start Num: 27

Candidate Starts for Eris_9:

(Start: 27 @5420 has 495 MA's), (44, 5552), (51, 5597), (53, 5627), (56, 5642), (60, 5663), (66, 5723), (67, 5726),

Gene: Eros_9 Start: 5420, Stop: 5881, Start Num: 27

Candidate Starts for Eros_9:

(Start: 27 @5420 has 495 MA's), (44, 5552), (51, 5597), (53, 5627), (56, 5642), (60, 5663), (66, 5723), (67, 5726),

Gene: Et2Brutus_10 Start: 7624, Stop: 8010, Start Num: 27

Candidate Starts for Et2Brutus_10:

(Start: 27 @7624 has 495 MA's), (35, 7693), (62, 7873), (69, 7939),

Gene: Eureka_33 Start: 31130, Stop: 31513, Start Num: 27

Candidate Starts for Eureka_33:

(Start: 27 @31130 has 495 MA's), (37, 31208), (40, 31235), (49, 31298), (67, 31433), (79, 31472),

Gene: Eurydice_9 Start: 5420, Stop: 5881, Start Num: 27

Candidate Starts for Eurydice_9:

(Start: 27 @5420 has 495 MA's), (44, 5552), (51, 5597), (53, 5627), (56, 5642), (60, 5663), (66, 5723), (67, 5726),

Gene: EvilGenius_12 Start: 6384, Stop: 6953, Start Num: 27

Candidate Starts for EvilGenius_12:

(Start: 27 @6384 has 495 MA's), (30, 6429), (66, 6684), (71, 6708), (76, 6729),

Gene: ExplosioNervosa_12 Start: 7756, Stop: 8142, Start Num: 27

Candidate Starts for ExplosioNervosa_12:

(22, 7681), (Start: 27 @7756 has 495 MA's), (50, 7927), (57, 7987),

Gene: Fayely_12 Start: 7756, Stop: 8142, Start Num: 27

Candidate Starts for Fayely_12:

(22, 7681), (Start: 27 @7756 has 495 MA's), (50, 7927), (57, 7987),

Gene: Fibonacci_11 Start: 7624, Stop: 8010, Start Num: 27

Candidate Starts for Fibonacci_11:

(Start: 27 @7624 has 495 MA's), (35, 7693), (62, 7873), (69, 7939),

Gene: Filch_34 Start: 30905, Stop: 31288, Start Num: 27

Candidate Starts for Filch_34:

(Start: 27 @30905 has 495 MA's), (37, 30983), (40, 31010), (49, 31073), (67, 31208), (79, 31247),

Gene: Finnry_27 Start: 26438, Stop: 26854, Start Num: 27

Candidate Starts for Finnry_27:

(Start: 27 @26438 has 495 MA's), (30, 26483), (32, 26495), (35, 26507), (44, 26570), (58, 26669), (62, 26690), (81, 26795),

Gene: FireRed_33 Start: 31175, Stop: 31558, Start Num: 27

Candidate Starts for FireRed_33:

(Start: 27 @31175 has 495 MA's), (37, 31253), (40, 31280), (49, 31343), (67, 31478), (79, 31517),

Gene: FiringLine_10 Start: 5938, Stop: 6375, Start Num: 27

Candidate Starts for FiringLine_10:

(21, 5842), (Start: 27 @5938 has 495 MA's), (31, 5992), (51, 6115), (56, 6157), (60, 6178), (67, 6241), (79, 6283), (84, 6304),

Gene: First_0010 Start: 5985, Stop: 6446, Start Num: 27

Candidate Starts for First_0010:

(18, 5817), (Start: 27 @5985 has 495 MA's), (35, 6054), (51, 6162), (58, 6213), (66, 6285), (67, 6288), (71, 6309),

Gene: Flare16_10 Start: 6050, Stop: 6487, Start Num: 27

Candidate Starts for Flare16_10:

(21, 5954), (Start: 27 @6050 has 495 MA's), (30, 6095), (51, 6227), (66, 6350), (71, 6374),

Gene: Flaverint_11 Start: 7621, Stop: 8007, Start Num: 27

Candidate Starts for Flaverint_11:

(Start: 27 @7621 has 495 MA's), (35, 7690), (62, 7870), (69, 7936),

Gene: Florean_9 Start: 5420, Stop: 5881, Start Num: 27

Candidate Starts for Florean_9:

(Start: 27 @5420 has 495 MA's), (44, 5552), (51, 5597), (53, 5627), (56, 5642), (60, 5663), (66, 5723), (67, 5726),

Gene: Flux_9 Start: 5420, Stop: 5881, Start Num: 27

Candidate Starts for Flux_9:

(Start: 27 @5420 has 495 MA's), (44, 5552), (51, 5597), (53, 5627), (56, 5642), (60, 5663), (66, 5723), (67, 5726),

Gene: Flypotenuse_31 Start: 30743, Stop: 31126, Start Num: 27

Candidate Starts for Flypotenuse_31:

(Start: 27 @30743 has 495 MA's), (37, 30821), (40, 30848), (49, 30911), (67, 31046), (79, 31085),

Gene: Fulbright_28 Start: 24162, Stop: 24566, Start Num: 27

Candidate Starts for Fulbright_28:

(Start: 27 @24162 has 495 MA's), (63, 24420), (64, 24450), (72, 24492), (84, 24549),

Gene: Funston_9 Start: 5420, Stop: 5881, Start Num: 27

Candidate Starts for Funston_9:

(Start: 27 @5420 has 495 MA's), (44, 5552), (51, 5597), (53, 5627), (56, 5642), (60, 5663), (66, 5723), (67, 5726),

Gene: Gadost_9 Start: 5424, Stop: 5885, Start Num: 27

Candidate Starts for Gadost_9:

(Start: 27 @5424 has 495 MA's), (44, 5556), (51, 5601), (53, 5631), (56, 5646), (60, 5667), (66, 5727), (67, 5730),

Gene: Gage_35 Start: 31137, Stop: 31520, Start Num: 27

Candidate Starts for Gage_35:

(Start: 27 @31137 has 495 MA's), (37, 31215), (40, 31242), (49, 31305), (67, 31440), (79, 31479),

Gene: Gail_10 Start: 6144, Stop: 6530, Start Num: 27

Candidate Starts for Gail_10:

(14, 5856), (19, 5970), (Start: 27 @6144 has 495 MA's), (49, 6312), (56, 6369), (61, 6396), (63, 6402), (68, 6462),

Gene: Garak_15 Start: 7065, Stop: 7496, Start Num: 27

Candidate Starts for Garak_15:

(Start: 27 @7065 has 495 MA's), (56, 7284), (59, 7296), (60, 7305), (69, 7380),

Gene: Gator_31 Start: 30755, Stop: 31138, Start Num: 27

Candidate Starts for Gator_31:

(Start: 27 @30755 has 495 MA's), (37, 30833), (40, 30860), (49, 30923), (67, 31058), (79, 31097),

Gene: GaugeLDP_12 Start: 7318, Stop: 7788, Start Num: 25

Candidate Starts for GaugeLDP_12:

(21, 7225), (23, 7303), (Start: 25 @7318 has 9 MA's), (28, 7330), (48, 7489), (51, 7495), (56, 7537), (59, 7549), (71, 7642),

Gene: Gemini_36 Start: 31654, Stop: 32037, Start Num: 27

Candidate Starts for Gemini_36:

(Start: 27 @31654 has 495 MA's), (37, 31732), (40, 31759), (49, 31822), (67, 31957), (79, 31996),

Gene: Georgie2_11 Start: 5939, Stop: 6376, Start Num: 27

Candidate Starts for Georgie2_11:

(21, 5843), (Start: 27 @5939 has 495 MA's), (31, 5993), (51, 6116), (56, 6158), (60, 6179), (67, 6242), (79, 6284), (84, 6305),

Gene: Gex_29 Start: 24335, Stop: 24739, Start Num: 27

Candidate Starts for Gex_29:

(Start: 27 @24335 has 495 MA's), (63, 24593), (64, 24623), (72, 24665), (84, 24722),

Gene: Gilberta_11 Start: 7618, Stop: 8004, Start Num: 27

Candidate Starts for Gilberta_11:

(Start: 27 @7618 has 495 MA's), (35, 7687), (62, 7867), (69, 7933),

Gene: Gladiator_14 Start: 7039, Stop: 7470, Start Num: 27

Candidate Starts for Gladiator_14:

(Start: 27 @7039 has 495 MA's), (56, 7258), (59, 7270), (60, 7279), (69, 7354),

Gene: Glexan_31 Start: 30743, Stop: 31126, Start Num: 27

Candidate Starts for Glexan_31:

(Start: 27 @30743 has 495 MA's), (37, 30821), (40, 30848), (49, 30911), (67, 31046), (79, 31085),

Gene: Goku_33 Start: 30859, Stop: 31242, Start Num: 27

Candidate Starts for Goku_33:

(Start: 27 @30859 has 495 MA's), (37, 30937), (40, 30964), (49, 31027), (67, 31162), (79, 31201),

Gene: GoldenSpark_35 Start: 31137, Stop: 31520, Start Num: 27

Candidate Starts for GoldenSpark_35:

(Start: 27 @31137 has 495 MA's), (37, 31215), (40, 31242), (49, 31305), (67, 31440), (79, 31479),

Gene: Goldilocks_34 Start: 30557, Stop: 30940, Start Num: 27

Candidate Starts for Goldilocks_34:

(Start: 27 @30557 has 495 MA's), (37, 30635), (40, 30662), (49, 30725), (67, 30860), (79, 30899),

Gene: GooberAzure_35 Start: 31137, Stop: 31520, Start Num: 27

Candidate Starts for GooberAzure_35:

(Start: 27 @31137 has 495 MA's), (37, 31215), (40, 31242), (49, 31305), (67, 31440), (79, 31479),

Gene: GreedyLawyer_14 Start: 7065, Stop: 7496, Start Num: 27

Candidate Starts for GreedyLawyer_14:

(Start: 27 @7065 has 495 MA's), (56, 7284), (59, 7296), (60, 7305), (69, 7380),

Gene: Gruunaga_14 Start: 7039, Stop: 7470, Start Num: 27

Candidate Starts for Gruunaga_14:

(Start: 27 @7039 has 495 MA's), (56, 7258), (59, 7270), (60, 7279), (69, 7354),

Gene: HamSlice_8 Start: 5421, Stop: 5882, Start Num: 27

Candidate Starts for HamSlice_8:

(Start: 27 @5421 has 495 MA's), (44, 5553), (51, 5598), (53, 5628), (56, 5643), (60, 5664), (66, 5724), (67, 5727),

Gene: Hammer_14 Start: 7039, Stop: 7470, Start Num: 27

Candidate Starts for Hammer_14:

(Start: 27 @7039 has 495 MA's), (56, 7258), (59, 7270), (60, 7279), (69, 7354),

Gene: HanKaySha_34 Start: 30889, Stop: 31272, Start Num: 27

Candidate Starts for HanKaySha_34:

(Start: 27 @30889 has 495 MA's), (37, 30967), (40, 30994), (49, 31057), (67, 31192), (79, 31231),

Gene: Happiness_9 Start: 5425, Stop: 5886, Start Num: 27

Candidate Starts for Happiness_9:

(Start: 27 @5425 has 495 MA's), (44, 5557), (51, 5602), (53, 5632), (56, 5647), (60, 5668), (66, 5728), (67, 5731),

Gene: Harella_32 Start: 31259, Stop: 31642, Start Num: 27

Candidate Starts for Harella_32:

(Start: 27 @31259 has 495 MA's), (37, 31337), (40, 31364), (49, 31427), (67, 31562), (79, 31601),

Gene: HarryHoudini_12 Start: 6506, Stop: 6943, Start Num: 27

Candidate Starts for HarryHoudini_12:

(21, 6410), (Start: 27 @6506 has 495 MA's), (30, 6551), (66, 6806), (71, 6830),

Gene: Helmet_15 Start: 7065, Stop: 7496, Start Num: 27

Candidate Starts for Helmet_15:

(Start: 27 @7065 has 495 MA's), (56, 7284), (59, 7296), (60, 7305), (69, 7380),

Gene: Henry_34 Start: 31147, Stop: 31530, Start Num: 27

Candidate Starts for Henry_34:

(Start: 27 @31147 has 495 MA's), (37, 31225), (40, 31252), (49, 31315), (67, 31450), (79, 31489),

Gene: Hexamo_14 Start: 7020, Stop: 7451, Start Num: 27

Candidate Starts for Hexamo_14:

(Start: 27 @7020 has 495 MA's), (56, 7239), (59, 7251), (60, 7260), (69, 7335),

Gene: Highbury_34 Start: 30805, Stop: 31188, Start Num: 27

Candidate Starts for Highbury_34:

(Start: 27 @30805 has 495 MA's), (37, 30883), (40, 30910), (49, 30973), (67, 31108), (79, 31147),

Gene: Holli_9 Start: 5213, Stop: 5674, Start Num: 27

Candidate Starts for Holli_9:

(Start: 27 @5213 has 495 MA's), (44, 5345), (51, 5390), (53, 5420), (56, 5435), (60, 5456), (66, 5516), (67, 5519),

Gene: Holt_34 Start: 30424, Stop: 30807, Start Num: 27

Candidate Starts for Holt_34:

(Start: 27 @30424 has 495 MA's), (37, 30502), (40, 30529), (49, 30592), (67, 30727), (79, 30766),

Gene: Hoonter_35 Start: 31137, Stop: 31520, Start Num: 27

Candidate Starts for Hoonter_35:

(Start: 27 @31137 has 495 MA's), (37, 31215), (40, 31242), (49, 31305), (67, 31440), (79, 31479),

Gene: Hoot_14 Start: 7044, Stop: 7475, Start Num: 27

Candidate Starts for Hoot_14:

(Start: 27 @7044 has 495 MA's), (56, 7263), (59, 7275), (60, 7284), (69, 7359),

Gene: Hokey_35 Start: 31424, Stop: 31807, Start Num: 27

Candidate Starts for Hokey_35:

(Start: 27 @31424 has 495 MA's), (37, 31502), (40, 31529), (49, 31592), (67, 31727), (79, 31766),

Gene: HortumSL17_12 Start: 7723, Stop: 8109, Start Num: 27

Candidate Starts for HortumSL17_12:

(22, 7648), (Start: 27 @7723 has 495 MA's), (50, 7894), (57, 7954),

Gene: Houdini22_9 Start: 5424, Stop: 5885, Start Num: 27

Candidate Starts for Houdini22_9:

(Start: 27 @5424 has 495 MA's), (44, 5556), (51, 5601), (53, 5631), (56, 5646), (60, 5667), (66, 5727), (67, 5730),

Gene: HufflyPuff_32 Start: 31131, Stop: 31514, Start Num: 27

Candidate Starts for HufflyPuff_32:

(Start: 27 @31131 has 495 MA's), (37, 31209), (40, 31236), (49, 31299), (67, 31434), (79, 31473),

Gene: Hutc2_11 Start: 7624, Stop: 8010, Start Num: 27

Candidate Starts for Hutc2_11:

(Start: 27 @7624 has 495 MA's), (35, 7693), (62, 7873), (69, 7939),

Gene: ICleared_9 Start: 5420, Stop: 5881, Start Num: 27

Candidate Starts for ICleared_9:

(Start: 27 @5420 has 495 MA's), (44, 5552), (51, 5597), (53, 5627), (56, 5642), (60, 5663), (66, 5723), (67, 5726),

Gene: IHOP_33 Start: 31324, Stop: 31707, Start Num: 27

Candidate Starts for IHOP_33:

(Start: 27 @31324 has 495 MA's), (37, 31402), (40, 31429), (49, 31492), (67, 31627), (79, 31666),

Gene: Ibrahim_28 Start: 25159, Stop: 25599, Start Num: 27

Candidate Starts for Ibrahim_28:

(16, 24922), (21, 25063), (23, 25141), (Start: 27 @25159 has 495 MA's), (43, 25288), (51, 25336), (59, 25393), (65, 25453), (67, 25465), (75, 25489), (88, 25579), (90, 25594),

Gene: Icee_32 Start: 30805, Stop: 31188, Start Num: 27

Candidate Starts for Icee_32:

(Start: 27 @30805 has 495 MA's), (37, 30883), (40, 30910), (49, 30973), (67, 31108), (79, 31147),

Gene: Iceman_9 Start: 5420, Stop: 5881, Start Num: 27

Candidate Starts for Iceman_9:

(Start: 27 @5420 has 495 MA's), (44, 5552), (51, 5597), (53, 5627), (56, 5642), (60, 5663), (66, 5723), (67, 5726),

Gene: Inca_32 Start: 29826, Stop: 30209, Start Num: 27

Candidate Starts for Inca_32:

(Start: 27 @29826 has 495 MA's), (37, 29904), (40, 29931), (49, 29994), (67, 30129), (79, 30168),

Gene: Indra_14 Start: 7065, Stop: 7496, Start Num: 27

Candidate Starts for Indra_14:

(Start: 27 @7065 has 495 MA's), (56, 7284), (59, 7296), (60, 7305), (69, 7380),

Gene: Insomnia_11 Start: 7673, Stop: 8059, Start Num: 27

Candidate Starts for Insomnia_11:

(Start: 27 @7673 has 495 MA's), (35, 7742), (62, 7922), (69, 7988),

Gene: Iracema64_9 Start: 5406, Stop: 5858, Start Num: 27

Candidate Starts for Iracema64_9:

(21, 5313), (Start: 27 @5406 has 495 MA's), (35, 5475), (51, 5583), (60, 5649), (67, 5712), (84, 5787), (87, 5817),

Gene: IronMan_12 Start: 7666, Stop: 8154, Start Num: 25

Candidate Starts for IronMan_12:

(Start: 25 @7666 has 9 MA's), (30, 7711), (31, 7720), (56, 7885), (71, 7990),

Gene: Isiphiwo_14 Start: 7065, Stop: 7499, Start Num: 27

Candidate Starts for Isiphiwo_14:

(Start: 27 @7065 has 495 MA's), (41, 7179), (56, 7284), (59, 7296), (60, 7305), (69, 7380),

Gene: Jaan_13 Start: 8050, Stop: 8544, Start Num: 27

Candidate Starts for Jaan_13:

(18, 7873), (Start: 27 @8050 has 495 MA's), (31, 8104), (51, 8227), (65, 8341), (71, 8374),

Gene: Jabith_11 Start: 7673, Stop: 8059, Start Num: 27

Candidate Starts for Jabith_11:

(Start: 27 @7673 has 495 MA's), (35, 7742), (62, 7922), (69, 7988),

Gene: Jamie19_26 Start: 23389, Stop: 23793, Start Num: 27

Candidate Starts for Jamie19_26:

(4, 22768), (5, 22771), (7, 22843), (10, 22864), (11, 22957), (12, 22984), (Start: 27 @23389 has 495 MA's), (63, 23647), (64, 23677), (72, 23719), (84, 23776),

Gene: Jaykayelowell_9 Start: 5419, Stop: 5880, Start Num: 27

Candidate Starts for Jaykayelowell_9:

(Start: 27 @5419 has 495 MA's), (44, 5551), (51, 5596), (53, 5626), (56, 5641), (60, 5662), (66, 5722), (67, 5725),

Gene: JeTaime_35 Start: 31948, Stop: 32331, Start Num: 27

Candidate Starts for JeTaime_35:

(Start: 27 @31948 has 495 MA's), (37, 32026), (40, 32053), (49, 32116), (67, 32251), (79, 32290),

Gene: Jeeves_10 Start: 6157, Stop: 6543, Start Num: 27
Candidate Starts for Jeeves_10:
(19, 5983), (20, 6025), (Start: 27 @6157 has 495 MA's), (49, 6325), (63, 6415), (68, 6475), (69, 6478),

Gene: Jeffabunny_14 Start: 7068, Stop: 7499, Start Num: 27
Candidate Starts for Jeffabunny_14:
(Start: 27 @7068 has 495 MA's), (56, 7287), (59, 7299), (60, 7308), (69, 7383),

Gene: Jerm_12 Start: 6372, Stop: 6836, Start Num: 27
Candidate Starts for Jerm_12:
(Start: 27 @6372 has 495 MA's), (35, 6441), (51, 6549), (56, 6591), (58, 6600), (66, 6672), (71, 6696),

Gene: JetBlade_9 Start: 5420, Stop: 5881, Start Num: 27
Candidate Starts for JetBlade_9:
(Start: 27 @5420 has 495 MA's), (44, 5552), (51, 5597), (53, 5627), (56, 5642), (60, 5663), (66, 5723),
(67, 5726),

Gene: JewelBug_14 Start: 7066, Stop: 7497, Start Num: 27
Candidate Starts for JewelBug_14:
(Start: 27 @7066 has 495 MA's), (41, 7180), (56, 7285), (59, 7297), (60, 7306), (69, 7381),

Gene: Jobypre_27 Start: 26434, Stop: 26850, Start Num: 27
Candidate Starts for Jobypre_27:
(Start: 27 @26434 has 495 MA's), (30, 26479), (32, 26491), (35, 26503), (44, 26566), (58, 26665), (62,
26686), (81, 26791),

Gene: JoongJeon_9 Start: 5420, Stop: 5881, Start Num: 27
Candidate Starts for JoongJeon_9:
(Start: 27 @5420 has 495 MA's), (44, 5552), (51, 5597), (53, 5627), (56, 5642), (60, 5663), (66, 5723),
(67, 5726),

Gene: Jordennis_14 Start: 7065, Stop: 7499, Start Num: 27
Candidate Starts for Jordennis_14:
(Start: 27 @7065 has 495 MA's), (41, 7179), (56, 7284), (59, 7296), (60, 7305), (69, 7380),

Gene: Joselito_11 Start: 7621, Stop: 8007, Start Num: 27
Candidate Starts for Joselito_11:
(Start: 27 @7621 has 495 MA's), (35, 7690), (62, 7870), (69, 7936),

Gene: JoshKayV_12 Start: 6385, Stop: 6825, Start Num: 27
Candidate Starts for JoshKayV_12:
(21, 6295), (Start: 27 @6385 has 495 MA's), (29, 6427), (30, 6430), (71, 6709), (76, 6730), (87, 6790),

Gene: Journey13_8 Start: 5230, Stop: 5628, Start Num: 27
Candidate Starts for Journey13_8:
(Start: 27 @5230 has 495 MA's), (51, 5407), (56, 5449),

Gene: Journey_30 Start: 24339, Stop: 24743, Start Num: 27
Candidate Starts for Journey_30:
(Start: 27 @24339 has 495 MA's), (63, 24597), (64, 24627), (72, 24669), (84, 24726),

Gene: Jsquared_9 Start: 5161, Stop: 5556, Start Num: 27
Candidate Starts for Jsquared_9:

(Start: 27 @5161 has 495 MA's), (44, 5293), (56, 5380), (62, 5410), (83, 5527),

Gene: Jubie_27 Start: 26435, Stop: 26851, Start Num: 27

Candidate Starts for Jubie_27:

(Start: 27 @26435 has 495 MA's), (30, 26480), (32, 26492), (35, 26504), (44, 26567), (58, 26666), (62, 26687), (81, 26792),

Gene: KFPoly_9 Start: 5420, Stop: 5881, Start Num: 27

Candidate Starts for KFPoly_9:

(Start: 27 @5420 has 495 MA's), (44, 5552), (51, 5597), (53, 5627), (56, 5642), (60, 5663), (66, 5723), (67, 5726),

Gene: Kamy_9 Start: 5421, Stop: 5882, Start Num: 27

Candidate Starts for Kamy_9:

(Start: 27 @5421 has 495 MA's), (44, 5553), (51, 5598), (53, 5628), (56, 5643), (60, 5664), (66, 5724), (67, 5727),

Gene: Kanye_35 Start: 32133, Stop: 32516, Start Num: 27

Candidate Starts for Kanye_35:

(Start: 27 @32133 has 495 MA's), (37, 32211), (40, 32238), (49, 32301), (67, 32436), (79, 32475),

Gene: Katalie136_9 Start: 5429, Stop: 5890, Start Num: 27

Candidate Starts for Katalie136_9:

(Start: 27 @5429 has 495 MA's), (35, 5498), (59, 5663), (60, 5672), (65, 5723), (67, 5735), (89, 5858),

Gene: Kazan_14 Start: 7071, Stop: 7502, Start Num: 27

Candidate Starts for Kazan_14:

(Start: 27 @7071 has 495 MA's), (41, 7185), (56, 7290), (59, 7302), (60, 7311), (69, 7386),

Gene: Kerberos_13 Start: 6175, Stop: 6600, Start Num: 27

Candidate Starts for Kerberos_13:

(Start: 27 @6175 has 495 MA's), (56, 6394), (62, 6424),

Gene: Keziacharles14_10 Start: 5897, Stop: 6280, Start Num: 27

Candidate Starts for Keziacharles14_10:

(20, 5762), (Start: 27 @5897 has 495 MA's), (31, 5951), (58, 6128), (74, 6230),

Gene: Kimchi_35 Start: 31140, Stop: 31523, Start Num: 27

Candidate Starts for Kimchi_35:

(Start: 27 @31140 has 495 MA's), (37, 31218), (40, 31245), (49, 31308), (67, 31443), (79, 31482),

Gene: KingCyrus_12 Start: 6373, Stop: 6813, Start Num: 27

Candidate Starts for KingCyrus_12:

(Start: 27 @6373 has 495 MA's), (30, 6418), (66, 6673), (71, 6697), (76, 6718),

Gene: Kingmustik0402_9 Start: 5412, Stop: 5873, Start Num: 27

Candidate Starts for Kingmustik0402_9:

(Start: 27 @5412 has 495 MA's), (44, 5544), (51, 5589), (53, 5619), (56, 5634), (60, 5655), (66, 5715), (67, 5718),

Gene: Kingsolomon_27 Start: 26434, Stop: 26850, Start Num: 27

Candidate Starts for Kingsolomon_27:

(Start: 27 @26434 has 495 MA's), (30, 26479), (32, 26491), (35, 26503), (44, 26566), (58, 26665), (62, 26686), (81, 26791),

Gene: Kipper29_14 Start: 7065, Stop: 7496, Start Num: 27

Candidate Starts for Kipper29_14:

(Start: 27 @7065 has 495 MA's), (56, 7284), (59, 7296), (60, 7305), (69, 7380),

Gene: Koduck_10 Start: 5448, Stop: 5843, Start Num: 27

Candidate Starts for Koduck_10:

(Start: 27 @5448 has 495 MA's), (44, 5580), (52, 5652), (56, 5667), (62, 5697), (83, 5814),

Gene: Koko_14 Start: 7065, Stop: 7496, Start Num: 27

Candidate Starts for Koko_14:

(Start: 27 @7065 has 495 MA's), (56, 7284), (59, 7296), (60, 7305), (69, 7380),

Gene: Koreni_8 Start: 5069, Stop: 5530, Start Num: 27

Candidate Starts for Koreni_8:

(Start: 27 @5069 has 495 MA's), (44, 5201), (51, 5246), (53, 5276), (56, 5291), (60, 5312), (66, 5372), (67, 5375),

Gene: Kostya_34 Start: 31148, Stop: 31531, Start Num: 27

Candidate Starts for Kostya_34:

(Start: 27 @31148 has 495 MA's), (37, 31226), (40, 31253), (49, 31316), (67, 31451), (79, 31490),

Gene: Kratak_9 Start: 5424, Stop: 5876, Start Num: 27

Candidate Starts for Kratak_9:

(Start: 27 @5424 has 495 MA's), (44, 5556), (51, 5601), (60, 5667), (67, 5730), (84, 5805),

Gene: Kremtemulon_8 Start: 5501, Stop: 5926, Start Num: 27

Candidate Starts for Kremtemulon_8:

(21, 5408), (24, 5486), (Start: 27 @5501 has 495 MA's), (51, 5678), (70, 5825), (74, 5837), (87, 5891),

Gene: Krypton555_27 Start: 26338, Stop: 26751, Start Num: 27

Candidate Starts for Krypton555_27:

(Start: 27 @26338 has 495 MA's), (30, 26383), (32, 26395), (35, 26407), (62, 26590),

Gene: Kyee_9 Start: 5421, Stop: 5882, Start Num: 27

Candidate Starts for Kyee_9:

(Start: 27 @5421 has 495 MA's), (44, 5553), (51, 5598), (53, 5628), (56, 5643), (60, 5664), (66, 5724), (67, 5727),

Gene: L5_11 Start: 5456, Stop: 5851, Start Num: 27

Candidate Starts for L5_11:

(Start: 27 @5456 has 495 MA's), (44, 5588), (52, 5660), (56, 5675), (62, 5705), (83, 5822),

Gene: LHTSCC_9 Start: 5406, Stop: 5858, Start Num: 27

Candidate Starts for LHTSCC_9:

(21, 5313), (Start: 27 @5406 has 495 MA's), (35, 5475), (48, 5577), (51, 5583), (60, 5649), (67, 5712), (84, 5787),

Gene: LadyBird_10 Start: 5973, Stop: 6413, Start Num: 27

Candidate Starts for LadyBird_10:

(Start: 27 @5973 has 495 MA's), (66, 6273), (71, 6297),

Gene: Landor_11 Start: 7717, Stop: 8196, Start Num: 25
Candidate Starts for Landor_11:
(Start: 25 @7717 has 9 MA's), (51, 7894), (56, 7936), (59, 7948), (71, 8041),

Gene: LappelDuVide_8 Start: 5420, Stop: 5881, Start Num: 27
Candidate Starts for LappelDuVide_8:
(Start: 27 @5420 has 495 MA's), (44, 5552), (51, 5597), (53, 5627), (56, 5642), (60, 5663), (66, 5723),
(67, 5726),

Gene: Larenn_11 Start: 6290, Stop: 6727, Start Num: 27
Candidate Starts for Larenn_11:
(21, 6197), (Start: 27 @6290 has 495 MA's), (30, 6335), (66, 6590), (71, 6614), (76, 6635),

Gene: Lemur_9 Start: 5420, Stop: 5881, Start Num: 27
Candidate Starts for Lemur_9:
(Start: 27 @5420 has 495 MA's), (44, 5552), (51, 5597), (53, 5627), (56, 5642), (60, 5663), (66, 5723),
(67, 5726),

Gene: LeoAvram_9 Start: 5420, Stop: 5881, Start Num: 27
Candidate Starts for LeoAvram_9:
(Start: 27 @5420 has 495 MA's), (44, 5552), (51, 5597), (53, 5627), (56, 5642), (60, 5663), (66, 5723),
(67, 5726),

Gene: Leogania_12 Start: 8106, Stop: 8570, Start Num: 27
Candidate Starts for Leogania_12:
(21, 8013), (Start: 27 @8106 has 495 MA's), (35, 8175), (56, 8328), (58, 8337), (66, 8409), (71, 8433),

Gene: Leviathan_12 Start: 6428, Stop: 6868, Start Num: 27
Candidate Starts for Leviathan_12:
(21, 6341), (Start: 27 @6428 has 495 MA's), (30, 6473), (71, 6752), (76, 6773),

Gene: LilTurb_12 Start: 6431, Stop: 6895, Start Num: 27
Candidate Starts for LilTurb_12:
(Start: 27 @6431 has 495 MA's), (35, 6500), (51, 6608), (56, 6650), (58, 6659), (66, 6731), (71, 6755),

Gene: Lilac_35 Start: 30644, Stop: 31027, Start Num: 27
Candidate Starts for Lilac_35:
(Start: 27 @30644 has 495 MA's), (37, 30722), (40, 30749), (49, 30812), (67, 30947), (79, 30986),

Gene: Lilbunny_13 Start: 7046, Stop: 7477, Start Num: 27
Candidate Starts for Lilbunny_13:
(Start: 27 @7046 has 495 MA's), (56, 7265), (59, 7277), (60, 7286), (69, 7361),

Gene: Lilizi_35 Start: 30852, Stop: 31235, Start Num: 27
Candidate Starts for Lilizi_35:
(Start: 27 @30852 has 495 MA's), (37, 30930), (40, 30957), (49, 31020), (67, 31155), (79, 31194),

Gene: Lilpickle_32 Start: 30354, Stop: 30737, Start Num: 27
Candidate Starts for Lilpickle_32:
(Start: 27 @30354 has 495 MA's), (37, 30432), (40, 30459), (49, 30522), (67, 30657), (79, 30696),

Gene: LittleB_9 Start: 5420, Stop: 5881, Start Num: 27

Candidate Starts for LittleB_9:

(Start: 27 @5420 has 495 MA's), (44, 5552), (51, 5597), (53, 5627), (56, 5642), (60, 5663), (66, 5723), (67, 5726),

Gene: LittleGuy_9 Start: 5399, Stop: 5824, Start Num: 27

Candidate Starts for LittleGuy_9:

(Start: 27 @5399 has 495 MA's), (51, 5576), (53, 5606), (65, 5693), (66, 5702), (67, 5705), (71, 5726), (74, 5735), (87, 5789),

Gene: LochMonster_9 Start: 5404, Stop: 5856, Start Num: 27

Candidate Starts for LochMonster_9:

(21, 5311), (Start: 27 @5404 has 495 MA's), (35, 5473), (48, 5575), (51, 5581), (60, 5647), (67, 5710), (84, 5785), (87, 5815),

Gene: Lokk_13 Start: 7712, Stop: 8134, Start Num: 27

Candidate Starts for Lokk_13:

(21, 7619), (Start: 27 @7712 has 495 MA's), (30, 7757), (48, 7883), (56, 7931), (62, 7961),

Gene: Lolly9_27 Start: 26216, Stop: 26617, Start Num: 27

Candidate Starts for Lolly9_27:

(Start: 27 @26216 has 495 MA's), (30, 26261), (35, 26285), (62, 26468),

Gene: LoneWolf_12 Start: 7570, Stop: 7956, Start Num: 27

Candidate Starts for LoneWolf_12:

(22, 7495), (Start: 27 @7570 has 495 MA's), (39, 7669), (49, 7738), (57, 7801), (73, 7900),

Gene: Lorenzo_9 Start: 5420, Stop: 5881, Start Num: 27

Candidate Starts for Lorenzo_9:

(Start: 27 @5420 has 495 MA's), (44, 5552), (51, 5597), (53, 5627), (56, 5642), (60, 5663), (66, 5723), (67, 5726),

Gene: Luchador_10 Start: 6145, Stop: 6531, Start Num: 27

Candidate Starts for Luchador_10:

(14, 5857), (19, 5971), (20, 6013), (Start: 27 @6145 has 495 MA's), (49, 6313), (61, 6397), (63, 6403), (68, 6463),

Gene: Lucivia_11 Start: 7670, Stop: 8056, Start Num: 27

Candidate Starts for Lucivia_11:

(Start: 27 @7670 has 495 MA's), (35, 7739), (62, 7919), (69, 7985),

Gene: Lumos_27 Start: 26431, Stop: 26847, Start Num: 27

Candidate Starts for Lumos_27:

(Start: 27 @26431 has 495 MA's), (30, 26476), (32, 26488), (35, 26500), (44, 26563), (58, 26662), (62, 26683), (81, 26788),

Gene: Lunsford_10 Start: 5420, Stop: 5881, Start Num: 27

Candidate Starts for Lunsford_10:

(Start: 27 @5420 has 495 MA's), (44, 5552), (51, 5597), (53, 5627), (56, 5642), (60, 5663), (66, 5723), (67, 5726),

Gene: MISSy_32 Start: 30660, Stop: 31043, Start Num: 27

Candidate Starts for MISSy_32:

(Start: 27 @30660 has 495 MA's), (37, 30738), (40, 30765), (49, 30828), (67, 30963), (79, 31002),

Gene: MPhalcon_32 Start: 30653, Stop: 31036, Start Num: 27

Candidate Starts for MPhalcon_32:

(Start: 27 @30653 has 495 MA's), (37, 30731), (40, 30758), (49, 30821), (67, 30956), (79, 30995),

Gene: MaCh_11 Start: 7618, Stop: 8004, Start Num: 27

Candidate Starts for MaCh_11:

(Start: 27 @7618 has 495 MA's), (35, 7687), (62, 7867), (69, 7933),

Gene: Mabel_11 Start: 7685, Stop: 8071, Start Num: 27

Candidate Starts for Mabel_11:

(Start: 27 @7685 has 495 MA's), (35, 7754), (62, 7934), (69, 8000),

Gene: MadamMonkfish_33 Start: 30565, Stop: 30948, Start Num: 27

Candidate Starts for MadamMonkfish_33:

(Start: 27 @30565 has 495 MA's), (37, 30643), (40, 30670), (49, 30733), (67, 30868), (79, 30907),

Gene: Magsby_29 Start: 24336, Stop: 24740, Start Num: 27

Candidate Starts for Magsby_29:

(Start: 27 @24336 has 495 MA's), (63, 24594), (64, 24624), (72, 24666), (84, 24723),

Gene: Malec_11 Start: 6295, Stop: 6732, Start Num: 27

Candidate Starts for Malec_11:

(21, 6202), (Start: 27 @6295 has 495 MA's), (30, 6340), (66, 6595), (71, 6619), (76, 6640),

Gene: Maminiaina_12 Start: 7493, Stop: 7879, Start Num: 27

Candidate Starts for Maminiaina_12:

(22, 7418), (Start: 27 @7493 has 495 MA's), (50, 7664), (57, 7724),

Gene: Manda_34 Start: 31632, Stop: 32015, Start Num: 27

Candidate Starts for Manda_34:

(Start: 27 @31632 has 495 MA's), (37, 31710), (40, 31737), (49, 31800), (67, 31935), (79, 31974),

Gene: Marshmallow_33 Start: 31145, Stop: 31528, Start Num: 27

Candidate Starts for Marshmallow_33:

(Start: 27 @31145 has 495 MA's), (37, 31223), (40, 31250), (49, 31313), (67, 31448), (79, 31487),

Gene: Maverick_9 Start: 5420, Stop: 5881, Start Num: 27

Candidate Starts for Maverick_9:

(Start: 27 @5420 has 495 MA's), (44, 5552), (51, 5597), (53, 5627), (56, 5642), (60, 5663), (66, 5723), (67, 5726),

Gene: Maxo_9 Start: 5421, Stop: 5882, Start Num: 27

Candidate Starts for Maxo_9:

(Start: 27 @5421 has 495 MA's), (44, 5553), (51, 5598), (53, 5628), (56, 5643), (60, 5664), (66, 5724), (67, 5727),

Gene: Maxxinista_34 Start: 30614, Stop: 30997, Start Num: 27

Candidate Starts for Maxxinista_34:

(Start: 27 @30614 has 495 MA's), (37, 30692), (40, 30719), (49, 30782), (67, 30917), (79, 30956),

Gene: Mazhar510_9 Start: 5421, Stop: 5882, Start Num: 27

Candidate Starts for Mazhar510_9:

(Start: 27 @5421 has 495 MA's), (44, 5553), (51, 5598), (53, 5628), (56, 5643), (60, 5664), (66, 5724), (67, 5727),

Gene: McFly_14 Start: 7065, Stop: 7496, Start Num: 27

Candidate Starts for McFly_14:

(Start: 27 @7065 has 495 MA's), (56, 7284), (59, 7296), (60, 7305), (69, 7380),

Gene: Medusa_9 Start: 5420, Stop: 5881, Start Num: 27

Candidate Starts for Medusa_9:

(Start: 27 @5420 has 495 MA's), (44, 5552), (51, 5597), (53, 5627), (56, 5642), (60, 5663), (66, 5723), (67, 5726),

Gene: MeeZee_9 Start: 5420, Stop: 5881, Start Num: 27

Candidate Starts for MeeZee_9:

(Start: 27 @5420 has 495 MA's), (44, 5552), (51, 5597), (53, 5627), (56, 5642), (60, 5663), (66, 5723), (67, 5726),

Gene: Melville_29 Start: 24339, Stop: 24743, Start Num: 27

Candidate Starts for Melville_29:

(Start: 27 @24339 has 495 MA's), (63, 24597), (64, 24627), (72, 24669), (84, 24726),

Gene: Melvin_9 Start: 5420, Stop: 5881, Start Num: 27

Candidate Starts for Melvin_9:

(Start: 27 @5420 has 495 MA's), (44, 5552), (51, 5597), (53, 5627), (56, 5642), (60, 5663), (66, 5723), (67, 5726),

Gene: Mendokysei_27 Start: 24965, Stop: 25378, Start Num: 27

Candidate Starts for Mendokysei_27:

(23, 24947), (Start: 27 @24965 has 495 MA's), (32, 25022), (48, 25136), (51, 25142), (65, 25259), (67, 25271), (80, 25313),

Gene: MichelleMyBell_27 Start: 23327, Stop: 23731, Start Num: 27

Candidate Starts for MichelleMyBell_27:

(4, 22706), (5, 22709), (7, 22781), (10, 22802), (11, 22895), (12, 22922), (Start: 27 @23327 has 495 MA's), (63, 23585), (64, 23615), (72, 23657), (84, 23714),

Gene: MiculUcigas_10 Start: 6050, Stop: 6487, Start Num: 27

Candidate Starts for MiculUcigas_10:

(21, 5954), (Start: 27 @6050 has 495 MA's), (30, 6095), (66, 6350), (71, 6374),

Gene: Miko_13 Start: 7681, Stop: 8103, Start Num: 27

Candidate Starts for Miko_13:

(21, 7588), (Start: 27 @7681 has 495 MA's), (30, 7726), (48, 7852), (56, 7900), (62, 7930),

Gene: Millski_9 Start: 5420, Stop: 5881, Start Num: 27

Candidate Starts for Millski_9:

(Start: 27 @5420 has 495 MA's), (44, 5552), (51, 5597), (53, 5627), (56, 5642), (60, 5663), (66, 5723), (67, 5726),

Gene: Mindy_33 Start: 30925, Stop: 31308, Start Num: 27

Candidate Starts for Mindy_33:

(Start: 27 @30925 has 495 MA's), (37, 31003), (40, 31030), (49, 31093), (67, 31228), (79, 31267),

Gene: MiniLon_27 Start: 26216, Stop: 26617, Start Num: 27
Candidate Starts for MiniLon_27:
(Start: 27 @26216 has 495 MA's), (30, 26261), (35, 26285), (62, 26468),

Gene: MiniMac_27 Start: 26217, Stop: 26618, Start Num: 27
Candidate Starts for MiniMac_27:
(Start: 27 @26217 has 495 MA's), (30, 26262), (35, 26286), (62, 26469),

Gene: Miniwave_33 Start: 31344, Stop: 31727, Start Num: 27
Candidate Starts for Miniwave_33:
(Start: 27 @31344 has 495 MA's), (37, 31422), (40, 31449), (49, 31512), (67, 31647), (79, 31686),

Gene: Miramae_9 Start: 5393, Stop: 5845, Start Num: 27
Candidate Starts for Miramae_9:
(Start: 27 @5393 has 495 MA's), (35, 5462), (48, 5564), (51, 5570), (60, 5636), (67, 5699), (75, 5732),
(84, 5774),

Gene: Misfit_33 Start: 31234, Stop: 31617, Start Num: 27
Candidate Starts for Misfit_33:
(Start: 27 @31234 has 495 MA's), (37, 31312), (40, 31339), (49, 31402), (67, 31537), (79, 31576),

Gene: MissWhite_10 Start: 5274, Stop: 5672, Start Num: 27
Candidate Starts for MissWhite_10:
(Start: 27 @5274 has 495 MA's), (51, 5451), (56, 5493),

Gene: Moldemort_34 Start: 30889, Stop: 31272, Start Num: 27
Candidate Starts for Moldemort_34:
(Start: 27 @30889 has 495 MA's), (37, 30967), (40, 30994), (49, 31057), (67, 31192), (79, 31231),

Gene: Moostard_27 Start: 26437, Stop: 26853, Start Num: 27
Candidate Starts for Moostard_27:
(Start: 27 @26437 has 495 MA's), (30, 26482), (32, 26494), (35, 26506), (44, 26569), (58, 26668), (62,
26689), (81, 26794),

Gene: Morpher26_9 Start: 5429, Stop: 5890, Start Num: 27
Candidate Starts for Morpher26_9:
(Start: 27 @5429 has 495 MA's), (35, 5498), (48, 5600), (59, 5663), (60, 5672), (65, 5723), (67, 5735),
(89, 5858),

Gene: Morrow_9 Start: 5420, Stop: 5881, Start Num: 27
Candidate Starts for Morrow_9:
(Start: 27 @5420 has 495 MA's), (44, 5552), (51, 5597), (53, 5627), (56, 5642), (60, 5663), (66, 5723),
(67, 5726),

Gene: Mosby_32 Start: 30651, Stop: 31034, Start Num: 27
Candidate Starts for Mosby_32:
(Start: 27 @30651 has 495 MA's), (37, 30729), (40, 30756), (49, 30819), (67, 30954), (79, 30993),

Gene: MsGreen_27 Start: 26434, Stop: 26850, Start Num: 27
Candidate Starts for MsGreen_27:
(Start: 27 @26434 has 495 MA's), (30, 26479), (32, 26491), (35, 26503), (44, 26566), (58, 26665), (62,
26686), (81, 26791),

Gene: Mulciber_11 Start: 7624, Stop: 8007, Start Num: 27
Candidate Starts for Mulciber_11:
(Start: 27 @7624 has 495 MA's), (35, 7693), (62, 7873), (69, 7939),

Gene: Munch_11 Start: 7621, Stop: 8007, Start Num: 27
Candidate Starts for Munch_11:
(Start: 27 @7621 has 495 MA's), (35, 7690), (62, 7870), (69, 7936),

Gene: Mundrea_9 Start: 5391, Stop: 5843, Start Num: 27
Candidate Starts for Mundrea_9:
(21, 5298), (Start: 27 @5391 has 495 MA's), (35, 5460), (48, 5562), (51, 5568), (60, 5634), (67, 5697),
(84, 5772),

Gene: Murica_32 Start: 31131, Stop: 31514, Start Num: 27
Candidate Starts for Murica_32:
(Start: 27 @31131 has 495 MA's), (37, 31209), (40, 31236), (49, 31299), (67, 31434), (79, 31473),

Gene: Murphy_34 Start: 31126, Stop: 31509, Start Num: 27
Candidate Starts for Murphy_34:
(Start: 27 @31126 has 495 MA's), (37, 31204), (40, 31231), (49, 31294), (67, 31429), (79, 31468),

Gene: MyraDee_8 Start: 4622, Stop: 5008, Start Num: 27
Candidate Starts for MyraDee_8:
(Start: 27 @4622 has 495 MA's), (37, 4700), (38, 4703), (55, 4838), (62, 4877),

Gene: Myrale_33 Start: 31010, Stop: 31393, Start Num: 27
Candidate Starts for Myrale_33:
(Start: 27 @31010 has 495 MA's), (37, 31088), (40, 31115), (49, 31178), (67, 31313), (79, 31352),

Gene: Myxus_12 Start: 7723, Stop: 8109, Start Num: 27
Candidate Starts for Myxus_12:
(22, 7648), (Start: 27 @7723 has 495 MA's), (50, 7894), (57, 7954),

Gene: NaSiaTalie_10 Start: 6047, Stop: 6484, Start Num: 27
Candidate Starts for NaSiaTalie_10:
(21, 5951), (Start: 27 @6047 has 495 MA's), (30, 6092), (51, 6224), (66, 6347), (71, 6371),

Gene: Nairb_28 Start: 25159, Stop: 25599, Start Num: 27
Candidate Starts for Nairb_28:
(16, 24922), (21, 25063), (23, 25141), (Start: 27 @25159 has 495 MA's), (43, 25288), (51, 25336), (59,
25393), (65, 25453), (67, 25465), (75, 25489), (88, 25579), (90, 25594),

Gene: Naji_13 Start: 6175, Stop: 6600, Start Num: 27
Candidate Starts for Naji_13:
(Start: 27 @6175 has 495 MA's), (56, 6394), (62, 6424),

Gene: Nala_33 Start: 31165, Stop: 31548, Start Num: 27
Candidate Starts for Nala_33:
(Start: 27 @31165 has 495 MA's), (37, 31243), (40, 31270), (49, 31333), (67, 31468), (79, 31507),

Gene: Nebs_9 Start: 5420, Stop: 5881, Start Num: 27
Candidate Starts for Nebs_9:

(Start: 27 @5420 has 495 MA's), (44, 5552), (51, 5597), (53, 5627), (56, 5642), (60, 5663), (66, 5723), (67, 5726),

Gene: Neeharika16_14 Start: 7065, Stop: 7499, Start Num: 27

Candidate Starts for Neeharika16_14:

(Start: 27 @7065 has 495 MA's), (41, 7179), (56, 7284), (59, 7296), (60, 7305), (69, 7380),

Gene: NelitzaMV_33 Start: 31215, Stop: 31598, Start Num: 27

Candidate Starts for NelitzaMV_33:

(Start: 27 @31215 has 495 MA's), (37, 31293), (40, 31320), (67, 31518), (79, 31557),

Gene: Nemo27_9 Start: 5419, Stop: 5880, Start Num: 27

Candidate Starts for Nemo27_9:

(Start: 27 @5419 has 495 MA's), (44, 5551), (51, 5596), (53, 5626), (56, 5641), (60, 5662), (66, 5722), (67, 5725),

Gene: Nenae_26 Start: 23389, Stop: 23793, Start Num: 27

Candidate Starts for Nenae_26:

(4, 22768), (5, 22771), (7, 22843), (10, 22864), (11, 22957), (12, 22984), (Start: 27 @23389 has 495 MA's), (49, 23563), (78, 23752),

Gene: Newrala_14 Start: 7065, Stop: 7499, Start Num: 27

Candidate Starts for Newrala_14:

(Start: 27 @7065 has 495 MA's), (41, 7179), (56, 7284), (59, 7296), (60, 7305), (69, 7380),

Gene: Nicholas_27 Start: 26434, Stop: 26850, Start Num: 27

Candidate Starts for Nicholas_27:

(Start: 27 @26434 has 495 MA's), (30, 26479), (32, 26491), (35, 26503), (44, 26566), (58, 26665), (62, 26686), (81, 26791),

Gene: Nimrod_33 Start: 31389, Stop: 31772, Start Num: 27

Candidate Starts for Nimrod_33:

(Start: 27 @31389 has 495 MA's), (37, 31467), (40, 31494), (49, 31557), (67, 31692), (79, 31731),

Gene: NoSleep_34 Start: 30886, Stop: 31269, Start Num: 27

Candidate Starts for NoSleep_34:

(Start: 27 @30886 has 495 MA's), (37, 30964), (40, 30991), (49, 31054), (67, 31189), (79, 31228),

Gene: Noelle_9 Start: 5486, Stop: 5947, Start Num: 27

Candidate Starts for Noelle_9:

(Start: 27 @5486 has 495 MA's), (44, 5618), (51, 5663), (53, 5693), (56, 5708), (60, 5729), (66, 5789), (67, 5792),

Gene: NorthStar_9 Start: 5420, Stop: 5881, Start Num: 27

Candidate Starts for NorthStar_9:

(Start: 27 @5420 has 495 MA's), (44, 5552), (51, 5597), (53, 5627), (56, 5642), (60, 5663), (66, 5723), (67, 5726),

Gene: NotAPhaseMom_9 Start: 5424, Stop: 5885, Start Num: 27

Candidate Starts for NotAPhaseMom_9:

(Start: 27 @5424 has 495 MA's), (44, 5556), (51, 5601), (53, 5631), (56, 5646), (60, 5667), (66, 5727), (67, 5730),

Gene: NothingSpecial_12 Start: 7983, Stop: 8459, Start Num: 27
Candidate Starts for NothingSpecial_12:
(21, 7890), (Start: 27 @7983 has 495 MA's), (35, 8052), (56, 8202), (66, 8283), (67, 8286), (71, 8307),
(76, 8328),

Gene: Nyxis_9 Start: 5402, Stop: 5827, Start Num: 27
Candidate Starts for Nyxis_9:
(Start: 27 @5402 has 495 MA's), (51, 5579), (53, 5609), (65, 5696), (66, 5705), (67, 5708), (71, 5729),
(74, 5738), (87, 5792),

Gene: OKaNui_9 Start: 5185, Stop: 5646, Start Num: 27
Candidate Starts for OKaNui_9:
(Start: 27 @5185 has 495 MA's), (44, 5317), (51, 5362), (53, 5392), (56, 5407), (60, 5428), (66, 5488),
(67, 5491),

Gene: Obama12_9 Start: 5408, Stop: 5860, Start Num: 27
Candidate Starts for Obama12_9:
(21, 5315), (Start: 27 @5408 has 495 MA's), (35, 5477), (48, 5579), (51, 5585), (60, 5651), (67, 5714),
(84, 5789),

Gene: Odin_10 Start: 5885, Stop: 6283, Start Num: 26
Candidate Starts for Odin_10:
(Start: 26 @5885 has 1 MA's), (Start: 27 @5888 has 495 MA's), (58, 6128), (61, 6146), (68, 6212),
(74, 6230),

Gene: Ohfah_9 Start: 5420, Stop: 5881, Start Num: 27
Candidate Starts for Ohfah_9:
(Start: 27 @5420 has 495 MA's), (44, 5552), (51, 5597), (53, 5627), (56, 5642), (60, 5663), (66, 5723),
(67, 5726),

Gene: Orange_11 Start: 7621, Stop: 8007, Start Num: 27
Candidate Starts for Orange_11:
(Start: 27 @7621 has 495 MA's), (35, 7690), (62, 7870), (69, 7936),

Gene: OrionPax_34 Start: 30892, Stop: 31275, Start Num: 27
Candidate Starts for OrionPax_34:
(Start: 27 @30892 has 495 MA's), (37, 30970), (40, 30997), (49, 31060), (67, 31195), (79, 31234),

Gene: PP_19 Start: 11239, Stop: 11685, Start Num: 27
Candidate Starts for PP_19:
(Start: 27 @11239 has 495 MA's), (36, 11311), (48, 11410), (51, 11416), (55, 11452), (60, 11482), (65,
11533), (67, 11545), (69, 11557),

Gene: PackMan_12 Start: 7723, Stop: 8109, Start Num: 27
Candidate Starts for PackMan_12:
(22, 7648), (Start: 27 @7723 has 495 MA's), (50, 7894), (57, 7954),

Gene: Palestino_9 Start: 5420, Stop: 5881, Start Num: 27
Candidate Starts for Palestino_9:
(Start: 27 @5420 has 495 MA's), (44, 5552), (51, 5597), (53, 5627), (56, 5642), (60, 5663), (66, 5723),
(67, 5726),

Gene: Palpatine_33 Start: 31161, Stop: 31544, Start Num: 27

Candidate Starts for Palpatine_33:

(Start: 27 @31161 has 495 MA's), (37, 31239), (40, 31266), (49, 31329), (67, 31464), (79, 31503),

Gene: Panchino_26 Start: 23349, Stop: 23753, Start Num: 25

Candidate Starts for Panchino_26:

(Start: 25 @23349 has 9 MA's), (Start: 27 @23355 has 495 MA's), (42, 23469), (63, 23607), (78, 23712), (84, 23736),

Gene: Paperbeatsrock_35 Start: 32127, Stop: 32510, Start Num: 27

Candidate Starts for Paperbeatsrock_35:

(Start: 27 @32127 has 495 MA's), (37, 32205), (40, 32232), (49, 32295), (67, 32430), (79, 32469),

Gene: Parmesanjohn_29 Start: 24339, Stop: 24743, Start Num: 27

Candidate Starts for Parmesanjohn_29:

(Start: 27 @24339 has 495 MA's), (63, 24597), (64, 24627), (72, 24669), (84, 24726),

Gene: Pat3_32 Start: 29873, Stop: 30256, Start Num: 27

Candidate Starts for Pat3_32:

(Start: 27 @29873 has 495 MA's), (37, 29951), (40, 29978), (49, 30041), (67, 30176), (79, 30215),

Gene: Peaches_9 Start: 5420, Stop: 5881, Start Num: 27

Candidate Starts for Peaches_9:

(Start: 27 @5420 has 495 MA's), (44, 5552), (51, 5597), (53, 5627), (56, 5642), (60, 5663), (66, 5723), (67, 5726),

Gene: Perplexer_9 Start: 5423, Stop: 5884, Start Num: 27

Candidate Starts for Perplexer_9:

(Start: 27 @5423 has 495 MA's), (35, 5492), (59, 5657), (60, 5666), (65, 5717), (67, 5729), (89, 5852),

Gene: PeterPeter_9 Start: 5420, Stop: 5881, Start Num: 27

Candidate Starts for PeterPeter_9:

(Start: 27 @5420 has 495 MA's), (44, 5552), (51, 5597), (53, 5627), (56, 5642), (60, 5663), (66, 5723), (67, 5726),

Gene: Petersenfast_10 Start: 7624, Stop: 8010, Start Num: 27

Candidate Starts for Petersenfast_10:

(Start: 27 @7624 has 495 MA's), (35, 7693), (62, 7873), (69, 7939),

Gene: PetiteSangsue_9 Start: 5429, Stop: 5890, Start Num: 27

Candidate Starts for PetiteSangsue_9:

(Start: 27 @5429 has 495 MA's), (35, 5498), (59, 5663), (60, 5672), (65, 5723), (67, 5735), (89, 5858),

Gene: Petra64142_35 Start: 31607, Stop: 31990, Start Num: 27

Candidate Starts for Petra64142_35:

(Start: 27 @31607 has 495 MA's), (37, 31685), (40, 31712), (49, 31775), (67, 31910), (79, 31949),

Gene: Ph8s_12 Start: 5847, Stop: 6245, Start Num: 27

Candidate Starts for Ph8s_12:

(Start: 27 @5847 has 495 MA's), (58, 6087), (61, 6105), (68, 6171), (74, 6189),

Gene: Phacado_9 Start: 5419, Stop: 5880, Start Num: 27

Candidate Starts for Phacado_9:

(Start: 27 @5419 has 495 MA's), (44, 5551), (51, 5596), (53, 5626), (56, 5641), (60, 5662), (66, 5722), (67, 5725),

Gene: Phaded_13 Start: 8049, Stop: 8543, Start Num: 27

Candidate Starts for Phaded_13:

(18, 7872), (Start: 27 @8049 has 495 MA's), (31, 8103), (51, 8226), (56, 8268), (65, 8340), (71, 8373),

Gene: Phaeder_12 Start: 7723, Stop: 8109, Start Num: 27

Candidate Starts for Phaeder_12:

(22, 7648), (Start: 27 @7723 has 495 MA's), (50, 7894), (57, 7954),

Gene: Phaja_33 Start: 31323, Stop: 31706, Start Num: 27

Candidate Starts for Phaja_33:

(Start: 27 @31323 has 495 MA's), (37, 31401), (40, 31428), (49, 31491), (67, 31626), (79, 31665),

Gene: PhancyPhin_26 Start: 23386, Stop: 23790, Start Num: 27

Candidate Starts for PhancyPhin_26:

(4, 22765), (5, 22768), (7, 22840), (10, 22861), (11, 22954), (12, 22981), (Start: 27 @23386 has 495 MA's), (49, 23560), (78, 23749),

Gene: Pharsalus_34 Start: 31927, Stop: 32310, Start Num: 27

Candidate Starts for Pharsalus_34:

(Start: 27 @31927 has 495 MA's), (37, 32005), (40, 32032), (49, 32095), (67, 32230), (79, 32269),

Gene: PhatBacter_33 Start: 31175, Stop: 31558, Start Num: 27

Candidate Starts for PhatBacter_33:

(Start: 27 @31175 has 495 MA's), (37, 31253), (40, 31280), (49, 31343), (67, 31478), (79, 31517),

Gene: Phaux_32 Start: 31173, Stop: 31556, Start Num: 27

Candidate Starts for Phaux_32:

(Start: 27 @31173 has 495 MA's), (37, 31251), (40, 31278), (49, 31341), (67, 31476), (79, 31515),

Gene: Phelipe_9 Start: 5420, Stop: 5881, Start Num: 27

Candidate Starts for Phelipe_9:

(Start: 27 @5420 has 495 MA's), (44, 5552), (51, 5597), (53, 5627), (56, 5642), (60, 5663), (66, 5723), (67, 5726),

Gene: Phighter1804_9 Start: 5405, Stop: 5857, Start Num: 27

Candidate Starts for Phighter1804_9:

(21, 5312), (Start: 27 @5405 has 495 MA's), (35, 5474), (51, 5582), (60, 5648), (67, 5711), (84, 5786), (87, 5816),

Gene: Philonius_29 Start: 24330, Stop: 24734, Start Num: 27

Candidate Starts for Philonius_29:

(4, 23709), (5, 23712), (7, 23784), (10, 23805), (Start: 27 @24330 has 495 MA's), (63, 24588), (64, 24618), (72, 24660), (84, 24717),

Gene: Phlei_7 Start: 7530, Stop: 7898, Start Num: 27

Candidate Starts for Phlei_7:

(13, 7212), (Start: 27 @7530 has 495 MA's), (58, 7752), (59, 7755), (63, 7776),

Gene: Phloss_26 Start: 23766, Stop: 24170, Start Num: 27

Candidate Starts for Phloss_26:

(Start: 27 @23766 has 495 MA's), (63, 24024), (64, 24054), (72, 24096), (84, 24153),

Gene: Phonnegut_12 Start: 7756, Stop: 8142, Start Num: 27

Candidate Starts for Phonnegut_12:

(22, 7681), (Start: 27 @7756 has 495 MA's), (50, 7927), (57, 7987),

Gene: Phontbonne_9 Start: 5400, Stop: 5825, Start Num: 27

Candidate Starts for Phontbonne_9:

(Start: 27 @5400 has 495 MA's), (51, 5577), (53, 5607), (65, 5694), (66, 5703), (67, 5706), (71, 5727), (74, 5736), (87, 5790),

Gene: Phrux_33 Start: 30888, Stop: 31271, Start Num: 27

Candidate Starts for Phrux_33:

(Start: 27 @30888 has 495 MA's), (37, 30966), (40, 30993), (49, 31056), (67, 31191), (79, 31230),

Gene: Pioneer_12 Start: 7756, Stop: 8142, Start Num: 27

Candidate Starts for Pioneer_12:

(22, 7681), (Start: 27 @7756 has 495 MA's), (50, 7927), (57, 7987),

Gene: Pipcraft_9 Start: 5420, Stop: 5881, Start Num: 27

Candidate Starts for Pipcraft_9:

(Start: 27 @5420 has 495 MA's), (44, 5552), (51, 5597), (53, 5627), (56, 5642), (60, 5663), (66, 5723), (67, 5726),

Gene: Pipsqueaks_29 Start: 24339, Stop: 24743, Start Num: 27

Candidate Starts for Pipsqueaks_29:

(Start: 27 @24339 has 495 MA's), (63, 24597), (64, 24627), (72, 24669), (84, 24726),

Gene: Piro94_11 Start: 6507, Stop: 6944, Start Num: 27

Candidate Starts for Piro94_11:

(21, 6411), (Start: 27 @6507 has 495 MA's), (30, 6552), (66, 6807),

Gene: Pmask_14 Start: 7065, Stop: 7499, Start Num: 27

Candidate Starts for Pmask_14:

(Start: 27 @7065 has 495 MA's), (41, 7179), (56, 7284), (59, 7296), (60, 7305), (69, 7380),

Gene: Policronamos_34 Start: 31173, Stop: 31556, Start Num: 27

Candidate Starts for Policronamos_34:

(Start: 27 @31173 has 495 MA's), (37, 31251), (40, 31278), (49, 31341), (67, 31476), (79, 31515),

Gene: Polymorphads_9 Start: 5420, Stop: 5881, Start Num: 27

Candidate Starts for Polymorphads_9:

(Start: 27 @5420 has 495 MA's), (44, 5552), (51, 5597), (53, 5627), (56, 5642), (60, 5663), (66, 5723), (67, 5726),

Gene: Pomar16_13 Start: 6216, Stop: 6641, Start Num: 27

Candidate Starts for Pomar16_13:

(Start: 27 @6216 has 495 MA's), (56, 6435), (62, 6465),

Gene: Porky_33 Start: 30984, Stop: 31367, Start Num: 27

Candidate Starts for Porky_33:

(Start: 27 @30984 has 495 MA's), (37, 31062), (40, 31089), (49, 31152), (67, 31287), (79, 31326),

Gene: Power_10 Start: 5938, Stop: 6375, Start Num: 27

Candidate Starts for Power_10:

(21, 5842), (Start: 27 @5938 has 495 MA's), (31, 5992), (51, 6115), (56, 6157), (60, 6178), (67, 6241), (79, 6283), (84, 6304),

Gene: Priamo_14 Start: 7083, Stop: 7514, Start Num: 27

Candidate Starts for Priamo_14:

(Start: 27 @7083 has 495 MA's), (56, 7302), (59, 7314), (60, 7323), (69, 7398),

Gene: Priya_12 Start: 7754, Stop: 8140, Start Num: 27

Candidate Starts for Priya_12:

(22, 7679), (Start: 27 @7754 has 495 MA's), (50, 7925), (57, 7985),

Gene: Pukovnik_12 Start: 7625, Stop: 8104, Start Num: 25

Candidate Starts for Pukovnik_12:

(Start: 25 @7625 has 9 MA's), (51, 7802), (56, 7844), (59, 7856), (71, 7949),

Gene: Pumbaa_9 Start: 5404, Stop: 5856, Start Num: 27

Candidate Starts for Pumbaa_9:

(21, 5311), (Start: 27 @5404 has 495 MA's), (35, 5473), (48, 5575), (51, 5581), (60, 5647), (67, 5710), (84, 5785),

Gene: Pumpkin_35 Start: 31224, Stop: 31607, Start Num: 27

Candidate Starts for Pumpkin_35:

(Start: 27 @31224 has 495 MA's), (37, 31302), (40, 31329), (49, 31392), (67, 31527), (79, 31566),

Gene: Purgamenstris_26 Start: 23389, Stop: 23793, Start Num: 27

Candidate Starts for Purgamenstris_26:

(4, 22768), (5, 22771), (7, 22843), (10, 22864), (11, 22957), (12, 22984), (Start: 27 @23389 has 495 MA's), (49, 23563), (78, 23752),

Gene: Purky_27 Start: 24726, Stop: 25124, Start Num: 25

Candidate Starts for Purky_27:

(Start: 25 @24726 has 9 MA's), (Start: 27 @24732 has 495 MA's), (42, 24846), (49, 24900), (63, 24984), (65, 25023),

Gene: Qobbit_12 Start: 7753, Stop: 8139, Start Num: 27

Candidate Starts for Qobbit_12:

(22, 7678), (Start: 27 @7753 has 495 MA's), (50, 7924), (57, 7984),

Gene: Quallification_34 Start: 31353, Stop: 31736, Start Num: 27

Candidate Starts for Quallification_34:

(Start: 27 @31353 has 495 MA's), (37, 31431), (40, 31458), (49, 31521), (67, 31656), (79, 31695),

Gene: QueenBeesly_10 Start: 5938, Stop: 6375, Start Num: 27

Candidate Starts for QueenBeesly_10:

(21, 5842), (Start: 27 @5938 has 495 MA's), (31, 5992), (51, 6115), (56, 6157), (60, 6178), (67, 6241), (79, 6283), (84, 6304),

Gene: Rachaly_13 Start: 7710, Stop: 8132, Start Num: 27

Candidate Starts for Rachaly_13:

(21, 7617), (Start: 27 @7710 has 495 MA's), (30, 7755), (48, 7881), (56, 7929), (62, 7959),

Gene: Rakim_34 Start: 31253, Stop: 31636, Start Num: 27
Candidate Starts for Rakim_34:
(Start: 27 @31253 has 495 MA's), (37, 31331), (40, 31358), (49, 31421), (67, 31556), (79, 31595),

Gene: Raymond7_26 Start: 23716, Stop: 24120, Start Num: 27
Candidate Starts for Raymond7_26:
(4, 23095), (5, 23098), (7, 23170), (10, 23191), (11, 23284), (12, 23311), (17, 23533), (Start: 27 @23716 has 495 MA's), (49, 23890), (63, 23974), (78, 24079), (84, 24103),

Gene: Rebel_26 Start: 23178, Stop: 23582, Start Num: 27
Candidate Starts for Rebel_26:
(4, 22557), (5, 22560), (7, 22632), (10, 22653), (11, 22746), (12, 22773), (Start: 27 @23178 has 495 MA's), (63, 23436), (64, 23466), (72, 23508), (84, 23565),

Gene: Redi_26 Start: 23389, Stop: 23793, Start Num: 27
Candidate Starts for Redi_26:
(4, 22768), (5, 22771), (7, 22843), (10, 22864), (11, 22957), (12, 22984), (Start: 27 @23389 has 495 MA's), (49, 23563), (78, 23752),

Gene: Relief_9 Start: 5421, Stop: 5882, Start Num: 27
Candidate Starts for Relief_9:
(Start: 27 @5421 has 495 MA's), (44, 5553), (51, 5598), (53, 5628), (56, 5643), (60, 5664), (66, 5724), (67, 5727),

Gene: Rifter_14 Start: 7038, Stop: 7469, Start Num: 27
Candidate Starts for Rifter_14:
(Start: 27 @7038 has 495 MA's), (56, 7257), (59, 7269), (60, 7278), (69, 7353),

Gene: Rimmer_32 Start: 30713, Stop: 31096, Start Num: 27
Candidate Starts for Rimmer_32:
(Start: 27 @30713 has 495 MA's), (37, 30791), (40, 30818), (49, 30881), (67, 31016), (79, 31055),

Gene: RiverMonster_33 Start: 30902, Stop: 31285, Start Num: 27
Candidate Starts for RiverMonster_33:
(Start: 27 @30902 has 495 MA's), (37, 30980), (40, 31007), (49, 31070), (67, 31205), (79, 31244),

Gene: Roksolana_14 Start: 7065, Stop: 7496, Start Num: 27
Candidate Starts for Roksolana_14:
(Start: 27 @7065 has 495 MA's), (56, 7284), (59, 7296), (60, 7305), (69, 7380),

Gene: Romney_9 Start: 5419, Stop: 5880, Start Num: 27
Candidate Starts for Romney_9:
(Start: 27 @5419 has 495 MA's), (44, 5551), (51, 5596), (53, 5626), (56, 5641), (60, 5662), (66, 5722), (67, 5725),

Gene: RonRayGun_28 Start: 25159, Stop: 25599, Start Num: 27
Candidate Starts for RonRayGun_28:
(16, 24922), (21, 25063), (23, 25141), (Start: 27 @25159 has 495 MA's), (43, 25288), (51, 25336), (59, 25393), (65, 25453), (67, 25465), (75, 25489), (88, 25579), (90, 25594),

Gene: Roosevelt_9 Start: 5420, Stop: 5881, Start Num: 27
Candidate Starts for Roosevelt_9:

(Start: 27 @5420 has 495 MA's), (44, 5552), (51, 5597), (53, 5627), (56, 5642), (60, 5663), (66, 5723), (67, 5726),

Gene: Ruin_9 Start: 5419, Stop: 5880, Start Num: 27

Candidate Starts for Ruin_9:

(Start: 27 @5419 has 495 MA's), (44, 5551), (51, 5596), (53, 5626), (56, 5641), (60, 5662), (66, 5722), (67, 5725),

Gene: Sabertooth_9 Start: 5420, Stop: 5881, Start Num: 27

Candidate Starts for Sabertooth_9:

(Start: 27 @5420 has 495 MA's), (44, 5552), (51, 5597), (53, 5627), (56, 5642), (60, 5663), (66, 5723), (67, 5726),

Gene: Saints25_34 Start: 30805, Stop: 31188, Start Num: 27

Candidate Starts for Saints25_34:

(Start: 27 @30805 has 495 MA's), (37, 30883), (40, 30910), (49, 30973), (67, 31108), (79, 31147),

Gene: Salz_11 Start: 7621, Stop: 8004, Start Num: 27

Candidate Starts for Salz_11:

(Start: 27 @7621 has 495 MA's), (35, 7690), (62, 7870), (69, 7936),

Gene: Samty_27 Start: 26437, Stop: 26853, Start Num: 27

Candidate Starts for Samty_27:

(Start: 27 @26437 has 495 MA's), (30, 26482), (32, 26494), (35, 26506), (44, 26569), (58, 26668), (62, 26689), (81, 26794),

Gene: Sassay_32 Start: 30651, Stop: 31034, Start Num: 27

Candidate Starts for Sassay_32:

(Start: 27 @30651 has 495 MA's), (37, 30729), (40, 30756), (49, 30819), (67, 30954), (79, 30993),

Gene: Scamp_9 Start: 5420, Stop: 5881, Start Num: 27

Candidate Starts for Scamp_9:

(Start: 27 @5420 has 495 MA's), (44, 5552), (51, 5597), (53, 5627), (56, 5642), (60, 5663), (66, 5723), (67, 5726),

Gene: Scherzo_12 Start: 7756, Stop: 8142, Start Num: 27

Candidate Starts for Scherzo_12:

(22, 7681), (Start: 27 @7756 has 495 MA's), (50, 7927), (57, 7987),

Gene: Schnauzer_29 Start: 24339, Stop: 24743, Start Num: 27

Candidate Starts for Schnauzer_29:

(Start: 27 @24339 has 495 MA's), (63, 24597), (64, 24627), (72, 24669), (84, 24726),

Gene: Scitech_26 Start: 23516, Stop: 23920, Start Num: 27

Candidate Starts for Scitech_26:

(Start: 27 @23516 has 495 MA's), (63, 23774), (64, 23804), (72, 23846), (84, 23903),

Gene: SemperFi_12 Start: 6366, Stop: 6803, Start Num: 27

Candidate Starts for SemperFi_12:

(21, 6270), (Start: 27 @6366 has 495 MA's), (31, 6420), (51, 6543), (56, 6585), (60, 6606), (67, 6669), (79, 6711), (84, 6732),

Gene: Serenity_9 Start: 5207, Stop: 5602, Start Num: 27

Candidate Starts for Serenity_9:

(Start: 27 @5207 has 495 MA's), (44, 5339), (56, 5426), (62, 5456), (83, 5573),

Gene: Shaka_9 Start: 5420, Stop: 5881, Start Num: 27

Candidate Starts for Shaka_9:

(Start: 27 @5420 has 495 MA's), (44, 5552), (51, 5597), (53, 5627), (56, 5642), (60, 5663), (66, 5723), (67, 5726),

Gene: Sham4_11 Start: 7624, Stop: 8010, Start Num: 27

Candidate Starts for Sham4_11:

(Start: 27 @7624 has 495 MA's), (35, 7693), (62, 7873), (69, 7939),

Gene: ShamWow_33 Start: 31147, Stop: 31530, Start Num: 27

Candidate Starts for ShamWow_33:

(Start: 27 @31147 has 495 MA's), (37, 31225), (40, 31252), (49, 31315), (67, 31450), (79, 31489),

Gene: SheaKeira_11 Start: 5924, Stop: 6310, Start Num: 27

Candidate Starts for SheaKeira_11:

(Start: 27 @5924 has 495 MA's), (54, 6137), (56, 6149), (63, 6182), (73, 6254),

Gene: Sheen_11 Start: 7152, Stop: 7595, Start Num: 25

Candidate Starts for Sheen_11:

(Start: 25 @7152 has 9 MA's), (44, 7296), (46, 7305), (47, 7329), (59, 7395), (65, 7455), (76, 7494), (77, 7500), (78, 7509),

Gene: SheldonCooper_9 Start: 5407, Stop: 5859, Start Num: 27

Candidate Starts for SheldonCooper_9:

(21, 5314), (Start: 27 @5407 has 495 MA's), (35, 5476), (48, 5578), (51, 5584), (60, 5650), (67, 5713), (84, 5788),

Gene: ShereKhan_35 Start: 32130, Stop: 32513, Start Num: 27

Candidate Starts for ShereKhan_35:

(Start: 27 @32130 has 495 MA's), (37, 32208), (40, 32235), (49, 32298), (67, 32433), (79, 32472),

Gene: ShrimpFriedEgg_26 Start: 23389, Stop: 23793, Start Num: 27

Candidate Starts for ShrimpFriedEgg_26:

(4, 22768), (5, 22771), (7, 22843), (10, 22864), (11, 22957), (12, 22984), (Start: 27 @23389 has 495 MA's), (49, 23563), (78, 23752),

Gene: Shweta_26 Start: 23517, Stop: 23921, Start Num: 27

Candidate Starts for Shweta_26:

(4, 22896), (5, 22899), (7, 22971), (10, 22992), (11, 23085), (12, 23112), (Start: 27 @23517 has 495 MA's), (63, 23775), (64, 23805), (72, 23847), (84, 23904),

Gene: Shygu2_9 Start: 5423, Stop: 5884, Start Num: 27

Candidate Starts for Shygu2_9:

(Start: 27 @5423 has 495 MA's), (35, 5492), (48, 5594), (59, 5657), (60, 5666), (65, 5717), (67, 5729), (89, 5852),

Gene: Silvafighter_29 Start: 24339, Stop: 24743, Start Num: 27

Candidate Starts for Silvafighter_29:

(Start: 27 @24339 has 495 MA's), (63, 24597), (64, 24627), (72, 24669), (84, 24726),

Gene: Silvy_29 Start: 24340, Stop: 24744, Start Num: 27

Candidate Starts for Silvy_29:

(Start: 27 @24340 has 495 MA's), (63, 24598), (64, 24628), (72, 24670), (84, 24727),

Gene: Simpliphy_34 Start: 30892, Stop: 31275, Start Num: 27

Candidate Starts for Simpliphy_34:

(Start: 27 @30892 has 495 MA's), (37, 30970), (40, 30997), (49, 31060), (67, 31195), (79, 31234),

Gene: SirDuracell_32 Start: 29812, Stop: 30195, Start Num: 27

Candidate Starts for SirDuracell_32:

(Start: 27 @29812 has 495 MA's), (37, 29890), (40, 29917), (49, 29980), (67, 30115), (79, 30154),

Gene: SkinnyPete_26 Start: 23379, Stop: 23783, Start Num: 27

Candidate Starts for SkinnyPete_26:

(Start: 27 @23379 has 495 MA's), (63, 23637), (64, 23667), (72, 23709), (84, 23766),

Gene: Skipitt_9 Start: 5420, Stop: 5881, Start Num: 27

Candidate Starts for Skipitt_9:

(Start: 27 @5420 has 495 MA's), (44, 5552), (51, 5597), (53, 5627), (56, 5642), (60, 5663), (66, 5723), (67, 5726),

Gene: Smeagan_12 Start: 6431, Stop: 6871, Start Num: 27

Candidate Starts for Smeagan_12:

(21, 6344), (Start: 27 @6431 has 495 MA's), (30, 6476), (71, 6755), (76, 6776),

Gene: SmellyB_14 Start: 7065, Stop: 7496, Start Num: 27

Candidate Starts for SmellyB_14:

(Start: 27 @7065 has 495 MA's), (56, 7284), (59, 7296), (60, 7305), (69, 7380),

Gene: Smurph_29 Start: 24339, Stop: 24743, Start Num: 27

Candidate Starts for Smurph_29:

(Start: 27 @24339 has 495 MA's), (63, 24597), (64, 24627), (72, 24669), (84, 24726),

Gene: SnapTap_10 Start: 5938, Stop: 6375, Start Num: 27

Candidate Starts for SnapTap_10:

(21, 5842), (Start: 27 @5938 has 495 MA's), (31, 5992), (51, 6115), (56, 6157), (60, 6178), (67, 6241), (79, 6283), (84, 6304),

Gene: Snape_11 Start: 7627, Stop: 8010, Start Num: 27

Candidate Starts for Snape_11:

(Start: 27 @7627 has 495 MA's), (35, 7696), (62, 7876), (69, 7942),

Gene: Snekmaggedon_26 Start: 23389, Stop: 23793, Start Num: 27

Candidate Starts for Snekmaggedon_26:

(4, 22768), (5, 22771), (7, 22843), (10, 22864), (11, 22957), (12, 22984), (Start: 27 @23389 has 495 MA's), (63, 23647), (64, 23677), (72, 23719), (84, 23776),

Gene: Snenia_27 Start: 26435, Stop: 26851, Start Num: 27

Candidate Starts for Snenia_27:

(Start: 27 @26435 has 495 MA's), (30, 26480), (32, 26492), (35, 26504), (44, 26567), (58, 26666), (62, 26687), (81, 26792),

Gene: SophKB_33 Start: 31146, Stop: 31529, Start Num: 27

Candidate Starts for SophKB_33:

(Start: 27 @31146 has 495 MA's), (37, 31224), (40, 31251), (49, 31314), (67, 31449), (79, 31488),

Gene: SororFago_10 Start: 6135, Stop: 6521, Start Num: 27

Candidate Starts for SororFago_10:

(19, 5961), (20, 6003), (Start: 27 @6135 has 495 MA's), (49, 6303), (54, 6348), (58, 6369), (61, 6387), (63, 6393), (68, 6453), (69, 6456),

Gene: Sotrice96_33 Start: 31101, Stop: 31484, Start Num: 27

Candidate Starts for Sotrice96_33:

(Start: 27 @31101 has 495 MA's), (37, 31179), (40, 31206), (49, 31269), (67, 31404), (79, 31443),

Gene: Sparxx_9 Start: 5420, Stop: 5881, Start Num: 27

Candidate Starts for Sparxx_9:

(Start: 27 @5420 has 495 MA's), (44, 5552), (51, 5597), (53, 5627), (56, 5642), (60, 5663), (66, 5723), (67, 5726),

Gene: Spino_9 Start: 5420, Stop: 5881, Start Num: 27

Candidate Starts for Spino_9:

(Start: 27 @5420 has 495 MA's), (44, 5552), (51, 5597), (53, 5627), (56, 5642), (60, 5663), (66, 5723), (67, 5726),

Gene: SpongeBob_26 Start: 23389, Stop: 23793, Start Num: 27

Candidate Starts for SpongeBob_26:

(4, 22768), (5, 22771), (7, 22843), (10, 22864), (11, 22957), (12, 22984), (Start: 27 @23389 has 495 MA's), (63, 23647), (64, 23677), (72, 23719), (84, 23776),

Gene: Spouty_11 Start: 7753, Stop: 8139, Start Num: 27

Candidate Starts for Spouty_11:

(22, 7678), (Start: 27 @7753 has 495 MA's), (50, 7924), (57, 7984),

Gene: Squirty_27 Start: 23877, Stop: 24275, Start Num: 25

Candidate Starts for Squirty_27:

(Start: 25 @23877 has 9 MA's), (Start: 27 @23883 has 495 MA's), (31, 23934), (42, 23997), (49, 24051), (63, 24135), (64, 24165), (77, 24228),

Gene: Stank_36 Start: 31653, Stop: 32036, Start Num: 27

Candidate Starts for Stank_36:

(Start: 27 @31653 has 495 MA's), (37, 31731), (40, 31758), (49, 31821), (67, 31956), (79, 31995),

Gene: StarStuff_13 Start: 6175, Stop: 6600, Start Num: 27

Candidate Starts for StarStuff_13:

(Start: 27 @6175 has 495 MA's), (56, 6394), (62, 6424),

Gene: Stark_34 Start: 30905, Stop: 31288, Start Num: 27

Candidate Starts for Stark_34:

(Start: 27 @30905 has 495 MA's), (37, 30983), (40, 31010), (49, 31073), (67, 31208), (79, 31247),

Gene: Stasia_10 Start: 5853, Stop: 6326, Start Num: 27

Candidate Starts for Stasia_10:

(19, 5676), (Start: 27 @5853 has 495 MA's), (30, 5898), (65, 6147), (67, 6159), (91, 6276),

Gene: StellaBean_33 Start: 31146, Stop: 31529, Start Num: 27

Candidate Starts for StellaBean_33:

(Start: 27 @31146 has 495 MA's), (37, 31224), (40, 31251), (49, 31314), (67, 31449), (79, 31488),

Gene: Stink_9 Start: 5394, Stop: 5846, Start Num: 27

Candidate Starts for Stink_9:

(Start: 27 @5394 has 495 MA's), (35, 5463), (48, 5565), (51, 5571), (60, 5637), (67, 5700), (75, 5733), (84, 5775),

Gene: StolenFromERC_35 Start: 31137, Stop: 31520, Start Num: 27

Candidate Starts for StolenFromERC_35:

(Start: 27 @31137 has 495 MA's), (37, 31215), (40, 31242), (49, 31305), (67, 31440), (79, 31479),

Gene: SuperAwesome_14 Start: 7065, Stop: 7499, Start Num: 27

Candidate Starts for SuperAwesome_14:

(Start: 27 @7065 has 495 MA's), (41, 7179), (56, 7284), (59, 7296), (60, 7305), (69, 7380),

Gene: SuperCallie99_14 Start: 7066, Stop: 7500, Start Num: 27

Candidate Starts for SuperCallie99_14:

(Start: 27 @7066 has 495 MA's), (41, 7180), (56, 7285), (59, 7297), (60, 7306), (69, 7381),

Gene: Superchunk_10 Start: 5746, Stop: 6141, Start Num: 27

Candidate Starts for Superchunk_10:

(Start: 27 @5746 has 495 MA's), (58, 5986), (61, 6004), (68, 6070), (74, 6088),

Gene: SweetiePie_10 Start: 5938, Stop: 6375, Start Num: 27

Candidate Starts for SweetiePie_10:

(21, 5842), (Start: 27 @5938 has 495 MA's), (31, 5992), (51, 6115), (56, 6157), (60, 6178), (67, 6241), (79, 6283), (84, 6304),

Gene: SwirlSquare_13 Start: 5878, Stop: 6273, Start Num: 27

Candidate Starts for SwirlSquare_13:

(Start: 27 @5878 has 495 MA's), (31, 5932), (35, 5947), (55, 6100), (58, 6118), (61, 6136), (68, 6202), (74, 6220),

Gene: TBrady12_35 Start: 31137, Stop: 31520, Start Num: 27

Candidate Starts for TBrady12_35:

(Start: 27 @31137 has 495 MA's), (37, 31215), (40, 31242), (49, 31305), (67, 31440), (79, 31479),

Gene: Tapioca_29 Start: 24339, Stop: 24743, Start Num: 27

Candidate Starts for Tapioca_29:

(Start: 27 @24339 has 495 MA's), (63, 24597), (64, 24627), (72, 24669), (84, 24726),

Gene: Taquarus_9 Start: 5423, Stop: 5884, Start Num: 27

Candidate Starts for Taquarus_9:

(Start: 27 @5423 has 495 MA's), (44, 5555), (51, 5600), (53, 5630), (56, 5645), (60, 5666), (66, 5726), (67, 5729),

Gene: Tarkin_35 Start: 32136, Stop: 32519, Start Num: 27

Candidate Starts for Tarkin_35:

(Start: 27 @32136 has 495 MA's), (37, 32214), (40, 32241), (49, 32304), (67, 32439), (79, 32478),

Gene: TarsusIV_10 Start: 5976, Stop: 6443, Start Num: 27

Candidate Starts for TarsusIV_10:

(21, 5883), (Start: 27 @5976 has 495 MA's), (30, 6021), (62, 6225), (67, 6279), (76, 6321), (86, 6369),

Gene: TeardropMSU_32 Start: 31047, Stop: 31430, Start Num: 27

Candidate Starts for TeardropMSU_32:

(Start: 27 @31047 has 495 MA's), (37, 31125), (40, 31152), (49, 31215), (67, 31350), (79, 31389),

Gene: Teaspoon_34 Start: 31100, Stop: 31483, Start Num: 27

Candidate Starts for Teaspoon_34:

(Start: 27 @31100 has 495 MA's), (37, 31178), (40, 31205), (49, 31268), (67, 31403), (79, 31442),

Gene: Terminus_33 Start: 31234, Stop: 31617, Start Num: 27

Candidate Starts for Terminus_33:

(Start: 27 @31234 has 495 MA's), (37, 31312), (40, 31339), (49, 31402), (67, 31537), (79, 31576),

Gene: Thanksgiving_9 Start: 5425, Stop: 5886, Start Num: 27

Candidate Starts for Thanksgiving_9:

(Start: 27 @5425 has 495 MA's), (44, 5557), (51, 5602), (53, 5632), (56, 5647), (60, 5668), (66, 5728), (67, 5731),

Gene: Thresher_34 Start: 31901, Stop: 32284, Start Num: 27

Candidate Starts for Thresher_34:

(Start: 27 @31901 has 495 MA's), (37, 31979), (40, 32006), (49, 32069), (67, 32204), (79, 32243),

Gene: Timothy_11 Start: 7621, Stop: 8007, Start Num: 27

Candidate Starts for Timothy_11:

(Start: 27 @7621 has 495 MA's), (35, 7690), (62, 7870), (69, 7936),

Gene: TinaFeyge_9 Start: 5420, Stop: 5881, Start Num: 27

Candidate Starts for TinaFeyge_9:

(Start: 27 @5420 has 495 MA's), (44, 5552), (51, 5597), (53, 5627), (56, 5642), (60, 5663), (66, 5723), (67, 5726),

Gene: TinyTimmy_10 Start: 7673, Stop: 8059, Start Num: 27

Candidate Starts for TinyTimmy_10:

(Start: 27 @7673 has 495 MA's), (35, 7742), (62, 7922), (69, 7988),

Gene: Tinybot_8 Start: 5409, Stop: 5861, Start Num: 27

Candidate Starts for Tinybot_8:

(21, 5316), (Start: 27 @5409 has 495 MA's), (35, 5478), (48, 5580), (51, 5586), (60, 5652), (67, 5715), (84, 5790),

Gene: TipsytheTRex_9 Start: 5160, Stop: 5561, Start Num: 27

Candidate Starts for TipsytheTRex_9:

(Start: 27 @5160 has 495 MA's), (42, 5277), (44, 5292), (56, 5379), (62, 5409),

Gene: TiroTheta9_9 Start: 5420, Stop: 5881, Start Num: 27

Candidate Starts for TiroTheta9_9:

(Start: 27 @5420 has 495 MA's), (44, 5552), (51, 5597), (53, 5627), (56, 5642), (60, 5663), (66, 5723), (67, 5726),

Gene: Toaka_10 Start: 6100, Stop: 6489, Start Num: 27

Candidate Starts for Toaka_10:

(22, 6025), (Start: 27 @6100 has 495 MA's), (49, 6268), (61, 6355), (63, 6361),

Gene: Tomaszewski_32 Start: 30744, Stop: 31127, Start Num: 27
Candidate Starts for Tomaszewski_32:
(Start: 27 @30744 has 495 MA's), (37, 30822), (40, 30849), (49, 30912), (67, 31047), (79, 31086),

Gene: Tomathan_13 Start: 6175, Stop: 6600, Start Num: 27
Candidate Starts for Tomathan_13:
(Start: 27 @6175 has 495 MA's), (56, 6394), (62, 6424),

Gene: ToneTone_13 Start: 6978, Stop: 7409, Start Num: 27
Candidate Starts for ToneTone_13:
(Start: 27 @6978 has 495 MA's), (56, 7197), (59, 7209), (60, 7218), (69, 7293),

Gene: Tortellini_27 Start: 25084, Stop: 25476, Start Num: 27
Candidate Starts for Tortellini_27:
(1, 23986), (2, 24166), (3, 24202), (6, 24529), (8, 24547), (9, 24550), (Start: 25 @25078 has 9 MA's),
(Start: 27 @25084 has 495 MA's), (42, 25198), (49, 25252), (63, 25336), (65, 25375), (77, 25429),

Gene: Toto_33 Start: 31147, Stop: 31530, Start Num: 27
Candidate Starts for Toto_33:
(Start: 27 @31147 has 495 MA's), (37, 31225), (40, 31252), (49, 31315), (67, 31450), (79, 31489),

Gene: Traaww1_31 Start: 30785, Stop: 31168, Start Num: 27
Candidate Starts for Traaww1_31:
(Start: 27 @30785 has 495 MA's), (37, 30863), (40, 30890), (49, 30953), (67, 31088), (79, 31127),

Gene: TroyPia_9 Start: 5420, Stop: 5881, Start Num: 27
Candidate Starts for TroyPia_9:
(Start: 27 @5420 has 495 MA's), (44, 5552), (51, 5597), (53, 5627), (56, 5642), (60, 5663), (66, 5723),
(67, 5726),

Gene: Tubs_12 Start: 7723, Stop: 8109, Start Num: 27
Candidate Starts for Tubs_12:
(22, 7648), (Start: 27 @7723 has 495 MA's), (50, 7894), (57, 7954),

Gene: Tucker_14 Start: 7065, Stop: 7496, Start Num: 27
Candidate Starts for Tucker_14:
(Start: 27 @7065 has 495 MA's), (56, 7284), (59, 7296), (60, 7305), (69, 7380),

Gene: Tuco_34 Start: 31655, Stop: 32038, Start Num: 27
Candidate Starts for Tuco_34:
(Start: 27 @31655 has 495 MA's), (37, 31733), (40, 31760), (49, 31823), (67, 31958), (79, 31997),

Gene: Turbido_12 Start: 6434, Stop: 6898, Start Num: 27
Candidate Starts for Turbido_12:
(Start: 27 @6434 has 495 MA's), (35, 6503), (51, 6611), (56, 6653), (58, 6662), (66, 6734), (71, 6758),

Gene: TygerBlood_9 Start: 5422, Stop: 5883, Start Num: 27
Candidate Starts for TygerBlood_9:
(Start: 27 @5422 has 495 MA's), (44, 5554), (51, 5599), (53, 5629), (56, 5644), (60, 5665), (66, 5725),
(67, 5728),

Gene: Ugenie5_9 Start: 7756, Stop: 8142, Start Num: 27

Candidate Starts for Ugenie5_9:

(22, 7681), (Start: 27 @7756 has 495 MA's), (50, 7927), (57, 7987),

Gene: Ukulele_33 Start: 30905, Stop: 31288, Start Num: 27

Candidate Starts for Ukulele_33:

(Start: 27 @30905 has 495 MA's), (37, 30983), (40, 31010), (49, 31073), (67, 31208), (79, 31247),

Gene: Ulysses_8 Start: 5148, Stop: 5600, Start Num: 27

Candidate Starts for Ulysses_8:

(21, 5055), (Start: 27 @5148 has 495 MA's), (35, 5217), (48, 5319), (51, 5325), (60, 5391), (67, 5454), (84, 5529),

Gene: Updawg_12 Start: 6492, Stop: 6929, Start Num: 27

Candidate Starts for Updawg_12:

(21, 6396), (Start: 27 @6492 has 495 MA's), (30, 6537), (66, 6792), (71, 6816),

Gene: VA6_10 Start: 5970, Stop: 6431, Start Num: 27

Candidate Starts for VA6_10:

(18, 5799), (Start: 27 @5970 has 495 MA's), (56, 6189), (64, 6252), (69, 6285),

Gene: VC3_13 Start: 6174, Stop: 6599, Start Num: 27

Candidate Starts for VC3_13:

(Start: 27 @6174 has 495 MA's), (56, 6393), (62, 6423),

Gene: Vanisoa_10 Start: 5811, Stop: 6197, Start Num: 27

Candidate Starts for Vanisoa_10:

(22, 5736), (Start: 27 @5811 has 495 MA's), (33, 5871), (49, 5979), (52, 6012),

Gene: VohminGhazi_14 Start: 7065, Stop: 7496, Start Num: 27

Candidate Starts for VohminGhazi_14:

(Start: 27 @7065 has 495 MA's), (56, 7284), (59, 7296), (60, 7305), (69, 7380),

Gene: Wander_9 Start: 5420, Stop: 5881, Start Num: 27

Candidate Starts for Wander_9:

(Start: 27 @5420 has 495 MA's), (44, 5552), (51, 5597), (53, 5627), (56, 5642), (60, 5663), (66, 5723), (67, 5726),

Gene: Whabigail7_12 Start: 6446, Stop: 6886, Start Num: 27

Candidate Starts for Whabigail7_12:

(21, 6359), (Start: 27 @6446 has 495 MA's), (30, 6491), (71, 6770), (76, 6791),

Gene: Whirlwind_28 Start: 26172, Stop: 26585, Start Num: 27

Candidate Starts for Whirlwind_28:

(Start: 27 @26172 has 495 MA's), (30, 26217), (32, 26229), (35, 26241), (62, 26424),

Gene: Whitty_28 Start: 25159, Stop: 25599, Start Num: 27

Candidate Starts for Whitty_28:

(16, 24922), (21, 25063), (23, 25141), (Start: 27 @25159 has 495 MA's), (43, 25288), (51, 25336), (59, 25393), (65, 25453), (67, 25465), (75, 25489), (88, 25579), (90, 25594),

Gene: WideWale_12 Start: 6492, Stop: 6929, Start Num: 27

Candidate Starts for WideWale_12:

(21, 6396), (Start: 27 @6492 has 495 MA's), (30, 6537), (66, 6792), (71, 6816),

Gene: Wiggin_36 Start: 31651, Stop: 32034, Start Num: 27
Candidate Starts for Wiggin_36:
(Start: 27 @31651 has 495 MA's), (37, 31729), (40, 31756), (49, 31819), (67, 31954), (79, 31993),

Gene: Wiks_14 Start: 7046, Stop: 7477, Start Num: 27
Candidate Starts for Wiks_14:
(Start: 27 @7046 has 495 MA's), (56, 7265), (59, 7277), (60, 7286), (69, 7361),

Gene: Wilbur_9 Start: 5419, Stop: 5880, Start Num: 27
Candidate Starts for Wilbur_9:
(Start: 27 @5419 has 495 MA's), (44, 5551), (51, 5596), (53, 5626), (56, 5641), (60, 5662), (66, 5722),
(67, 5725),

Gene: Wile_9 Start: 5430, Stop: 5891, Start Num: 27
Candidate Starts for Wile_9:
(Start: 27 @5430 has 495 MA's), (35, 5499), (59, 5664), (60, 5673), (65, 5724), (67, 5736), (89, 5859),

Gene: Willez_32 Start: 30651, Stop: 31034, Start Num: 27
Candidate Starts for Willez_32:
(Start: 27 @30651 has 495 MA's), (37, 30729), (40, 30756), (49, 30819), (67, 30954), (79, 30993),

Gene: Willsammy_27 Start: 24742, Stop: 25143, Start Num: 25
Candidate Starts for Willsammy_27:
(Start: 25 @24742 has 9 MA's), (Start: 27 @24748 has 495 MA's), (42, 24862), (49, 24916), (63,
25000), (65, 25039), (77, 25096),

Gene: Wizard007_9 Start: 5422, Stop: 5883, Start Num: 27
Candidate Starts for Wizard007_9:
(Start: 27 @5422 has 495 MA's), (44, 5554), (51, 5599), (53, 5629), (56, 5644), (60, 5665), (66, 5725),
(67, 5728),

Gene: WunderPhul_14 Start: 7046, Stop: 7477, Start Num: 27
Candidate Starts for WunderPhul_14:
(Start: 27 @7046 has 495 MA's), (56, 7265), (59, 7277), (60, 7286), (69, 7361),

Gene: Xandras_35 Start: 31137, Stop: 31520, Start Num: 27
Candidate Starts for Xandras_35:
(Start: 27 @31137 has 495 MA's), (37, 31215), (40, 31242), (49, 31305), (67, 31440), (79, 31479),

Gene: Xena_9 Start: 5429, Stop: 5878, Start Num: 27
Candidate Starts for Xena_9:
(Start: 27 @5429 has 495 MA's), (35, 5498), (59, 5663), (60, 5672), (65, 5723), (67, 5735), (82, 5801),
(87, 5846),

Gene: Xeno_28 Start: 24105, Stop: 24509, Start Num: 27
Candidate Starts for Xeno_28:
(Start: 27 @24105 has 495 MA's), (63, 24363), (64, 24393), (72, 24435), (84, 24492),

Gene: Xerxes_29 Start: 24336, Stop: 24740, Start Num: 27
Candidate Starts for Xerxes_29:
(Start: 27 @24336 has 495 MA's), (63, 24594), (64, 24624), (72, 24666), (84, 24723),

Gene: XianYue_10 Start: 5913, Stop: 6362, Start Num: 27

Candidate Starts for XianYue_10:

(Start: 27 @5913 has 495 MA's), (29, 5955), (30, 5958), (56, 6132), (76, 6258),

Gene: YassJohnny_34 Start: 31662, Stop: 32045, Start Num: 27

Candidate Starts for YassJohnny_34:

(Start: 27 @31662 has 495 MA's), (37, 31740), (40, 31767), (49, 31830), (67, 31965), (79, 32004),

Gene: Yecey3_11 Start: 5912, Stop: 6295, Start Num: 27

Candidate Starts for Yecey3_11:

(15, 5666), (Start: 27 @5912 has 495 MA's), (32, 5969), (63, 6167),

Gene: YoSam321_9 Start: 5420, Stop: 5881, Start Num: 27

Candidate Starts for YoSam321_9:

(Start: 27 @5420 has 495 MA's), (44, 5552), (51, 5597), (53, 5627), (56, 5642), (60, 5663), (66, 5723), (67, 5726),

Gene: Yokurt_14 Start: 7046, Stop: 7477, Start Num: 27

Candidate Starts for Yokurt_14:

(Start: 27 @7046 has 495 MA's), (56, 7265), (59, 7277), (60, 7286), (69, 7361),

Gene: Youngblood_33 Start: 31307, Stop: 31690, Start Num: 27

Candidate Starts for Youngblood_33:

(Start: 27 @31307 has 495 MA's), (37, 31385), (40, 31412), (49, 31475), (67, 31610), (79, 31649),

Gene: Zaka_14 Start: 7046, Stop: 7477, Start Num: 27

Candidate Starts for Zaka_14:

(Start: 27 @7046 has 495 MA's), (56, 7265), (59, 7277), (60, 7286), (69, 7361),

Gene: ZenTime222_28 Start: 25159, Stop: 25599, Start Num: 27

Candidate Starts for ZenTime222_28:

(16, 24922), (21, 25063), (23, 25141), (Start: 27 @25159 has 495 MA's), (43, 25288), (51, 25336), (59, 25393), (65, 25453), (67, 25465), (75, 25489), (88, 25579), (90, 25594),

Gene: Zulu_14 Start: 7045, Stop: 7476, Start Num: 27

Candidate Starts for Zulu_14:

(Start: 27 @7045 has 495 MA's), (56, 7264), (59, 7276), (60, 7285), (69, 7360),

Gene: xkcd_34 Start: 31316, Stop: 31699, Start Num: 27

Candidate Starts for xkcd_34:

(Start: 27 @31316 has 495 MA's), (37, 31394), (40, 31421), (49, 31484), (67, 31619), (79, 31658),