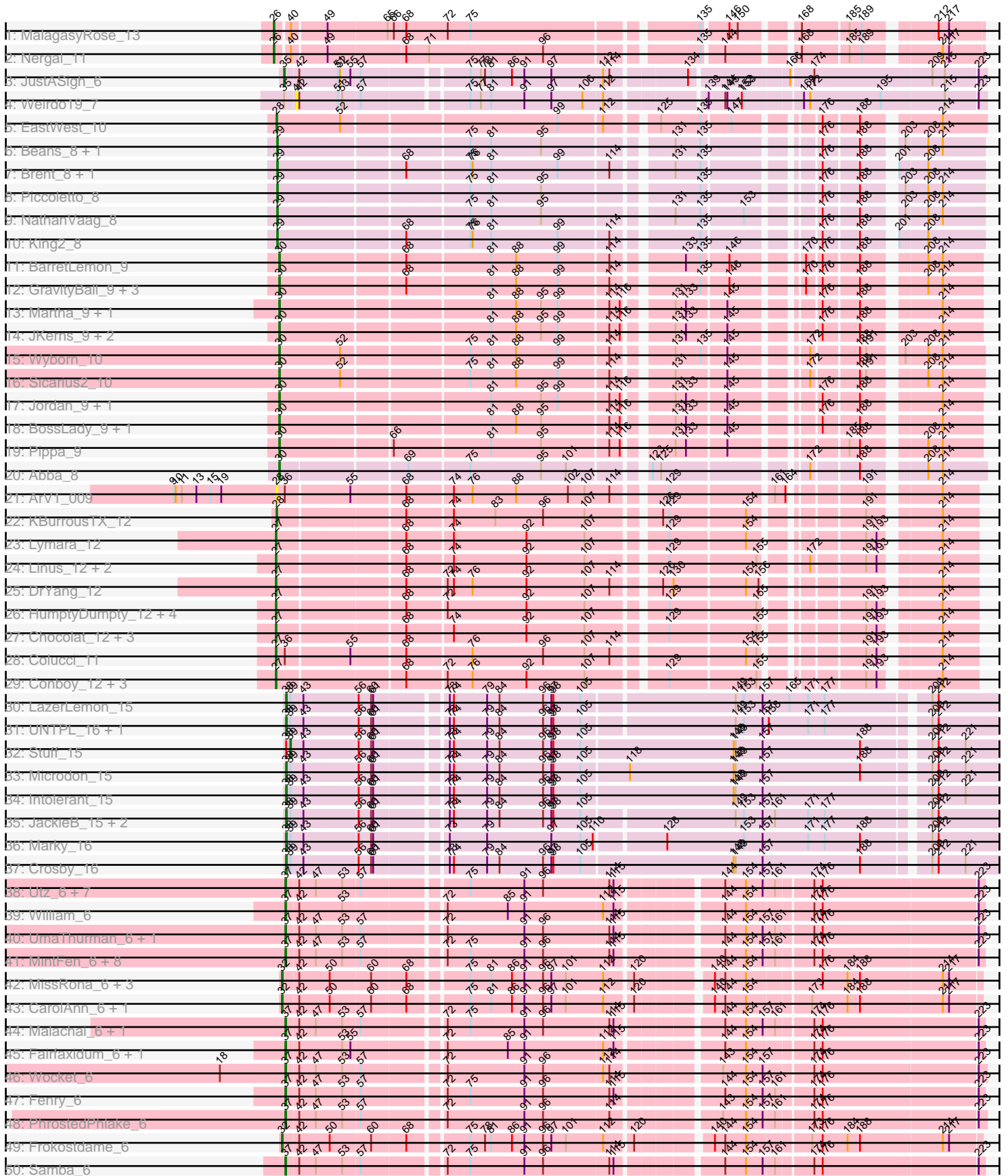
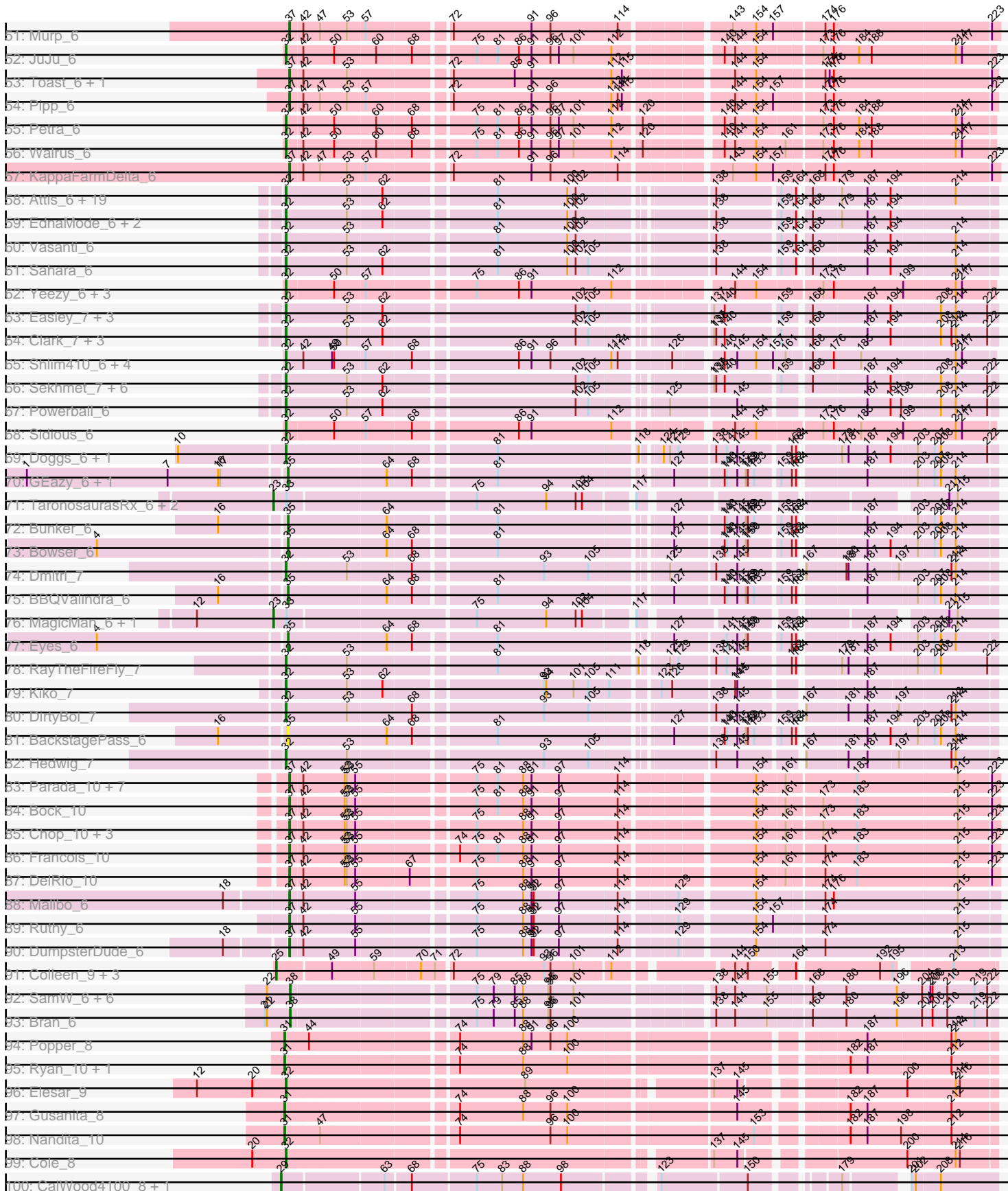


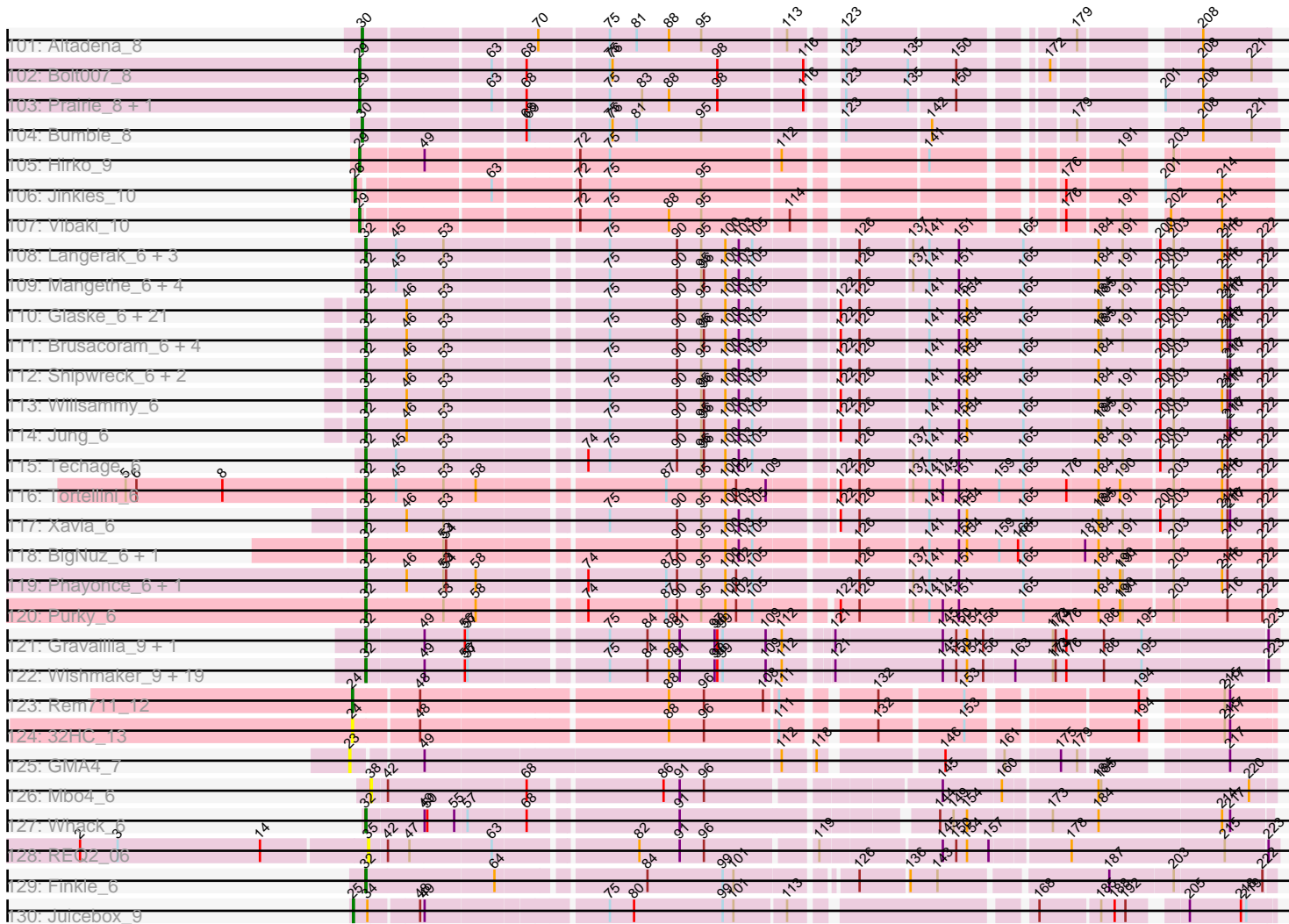
Pham 169646



Pham 169646



Pham 169646



Note: Tracks are now grouped by subcluster and scaled. Switching in subcluster is indicated by changes in track color. Track scale is now set by default to display the region 30 bp upstream of start 1 to 30 bp downstream of the last possible start. If this default region is judged to be packed too tightly with annotated starts, the track will be further scaled to only show that region of the ORF with annotated starts. This action will be indicated by adding "Zoomed" to the title. For starts, yellow indicates the location of called starts comprised solely of Glimmer/GeneMark auto-annotations, green indicates the location of called starts with at least 1 manual gene annotation.

Pham 169646 Report

This analysis was run 07/09/24 on database version 566.

Pham number 169646 has 301 members, 24 are drafts.

Phages represented in each track:

- Track 1 : MalagasyRose_13
- Track 2 : Nergal_11
- Track 3 : JustASigh_6
- Track 4 : Weirdo19_7
- Track 5 : EastWest_10
- Track 6 : Beans_8, Jawnski_8
- Track 7 : Brent_8, Franzy_8
- Track 8 : Piccoletto_8
- Track 9 : NathanVaag_8
- Track 10 : King2_8
- Track 11 : BarretLemon_9
- Track 12 : GravityBall_9, Timinator_9, StevieBAY_9, LeeroyJ_9
- Track 13 : Martha_9, TaeYoung_9
- Track 14 : JKerns_9, Sonny_9, Shade_9
- Track 15 : Wyborn_10
- Track 16 : Sicarius2_10
- Track 17 : Jordan_9, Zartrosa_9
- Track 18 : BossLady_9, Grekaycon_9
- Track 19 : Pippa_9
- Track 20 : Abba_8
- Track 21 : ArV1_009
- Track 22 : KBurrousTX_12
- Track 23 : Lymara_12
- Track 24 : Linus_12, PrincessTrina_12, JayCookie_12
- Track 25 : DrYang_12
- Track 26 : HumptyDumpty_12, Mordred_12, JaNo_12, Kabreeze_12, Scavito_12
- Track 27 : Chocolat_12, RosiePosie_12, Chubster_12, MoyaNatalis_12
- Track 28 : Colucci_11
- Track 29 : Conboy_12, EdgarPoe_12, Chipper1996_120, Tophat_12
- Track 30 : LazerLemon_15
- Track 31 : UNTPL_16, Bogota_16
- Track 32 : Stuff_15
- Track 33 : Microdon_15
- Track 34 : Intolerant_15
- Track 35 : JackieB_15, Henoccus_16, Araceli_16
- Track 36 : Marky_16
- Track 37 : Crosby_16

- Track 38 : Utz_6, Lysidious_6, Mellie_6, ZiggyZoo_6, Jalammah_6, Obliviate_6, BlingBling_6, Hitter_6
- Track 39 : William_6
- Track 40 : UmaThurman_6, Archis_6
- Track 41 : MintFen_6, Guacamole_6, Zarbodnamra_6, Melba_6, JasperJr_6, Barco_6, Delian_6, Wisp_6, CaptainKirk2_6
- Track 42 : MissRona_6, Azula_6, Blueberry_6, Gambino_6
- Track 43 : CarolAnn_6, Blino_6
- Track 44 : Malachai_6, Begonia_6
- Track 45 : Fairfaxidum_6, PrincePatrick_6
- Track 46 : Wocket_6
- Track 47 : Fenry_6
- Track 48 : PhrostedPhlake_6
- Track 49 : Frokostdame_6
- Track 50 : Samba_6
- Track 51 : Murp_6
- Track 52 : JuJu_6
- Track 53 : Toast_6, PCoral7_6
- Track 54 : Pipp_6
- Track 55 : Petra_6
- Track 56 : Walrus_6
- Track 57 : KappaFarmDelta_6
- Track 58 : Attis_6, TuertoX_6, Clap_6, Cynthia_6, Yeet412_6, GemG_6, Denise_6, Whiteclaw_6, LordFarquaad_6, JCole_6, Gizermo_6, Sproutie_6, Ebert_6, Matteo_6, Savage_6, SoilAssassin_6, Bjanes7_6, Pickett_6, Haley23_6, Mocha12_6
- Track 59 : EdnaMode_6, Lamberg_6, Nettuno_6
- Track 60 : Vasanti_6
- Track 61 : Sahara_6
- Track 62 : Yeezy_6, BaxterFox_6, PantheRoc_5, Ohgeesy_6
- Track 63 : Easley_7, Suerte_6, MichaelScott_7, Beenie_7
- Track 64 : Clark_7, Annalisa_7, Dorito_6, PhriskyACE_6
- Track 65 : Shlim410_6, Hortense_6, Howe_6, Twinkle_6, Adora_6
- Track 66 : Sekhmet_7, Oregano_7, DobbysSock_6, Dolores_7, Samman98_7, Thimann_7, WinkNick_7
- Track 67 : Powerball_6
- Track 68 : Sidious_6
- Track 69 : Doggs_6, Coriander_7
- Track 70 : GEazy_6, HannahD_6
- Track 71 : TaronosaurusRx_6, Opie_6, ZAYM_6
- Track 72 : Bunker_6
- Track 73 : Bowser_6
- Track 74 : Dmitri_7
- Track 75 : BBQValindra_6
- Track 76 : MagicMan_6, Schnabeltier_6
- Track 77 : Eyes_6
- Track 78 : RayTheFireFly_7
- Track 79 : Kiko_7
- Track 80 : DirtyBoi_7
- Track 81 : BackstagePass_6
- Track 82 : Hedwig_7
- Track 83 : Parada_10, Mulch_10, Pimento_9, WheatThin_10, Nadeem_10, BetterKatz_10, Brylie_10, NancyRae_10
- Track 84 : Bock_10

- Track 85 : Chop_10, Ayotoya_10, GrandSlam_10, Hamood_10
- Track 86 : Francois_10
- Track 87 : DelRio_10
- Track 88 : Malibo_6
- Track 89 : Ruthy_6
- Track 90 : DumpsterDude_6
- Track 91 : Colleen_9, TouchMeNot_9, Arianna_9, Poushou_9
- Track 92 : SamW_6, Troy_6, Lederberg_6, Dina_6, StAB_6, Stiles_6, Adelaide_6
- Track 93 : Bran_6
- Track 94 : Popper_8
- Track 95 : Ryan_10, Zaheer_10
- Track 96 : Elesar_9
- Track 97 : Gusanita_8
- Track 98 : Nandita_10
- Track 99 : Cole_8
- Track 100 : CalWood4100_8, Lilmac1015_8
- Track 101 : Altadena_8
- Track 102 : Bolt007_8
- Track 103 : Prairie_8, Klevey_8
- Track 104 : Bumble_8
- Track 105 : Hirko_9
- Track 106 : Jinkies_10
- Track 107 : Vibaki_10
- Track 108 : Langerak_6, Donovan_6, Sonah_6, Juniormint_6
- Track 109 : Mangethe_6, Majeke_6, Jebeks_6, Arib1_6, Phegasus_6
- Track 110 : Glaske_6, Camster_6, Venti_6, Dynamo_6, StevieRay_6, Megiddo_6, Polkaroo_6, FirstPlacePfu_6, KilKor_6, HUHilltop_6, Necropolis_6, Fishburne_6, Phineas_6, StressBall_6, GreaseLightnin_6, Zilizebeth_6, CactusJack_6, Malithi_6, Phalm_6, Bartholomew_6, Kari_6, Vidya_6
- Track 111 : Brusacoram_6, Bunnies_6, Atcoo_6, Thespis_6, Ksquared_6
- Track 112 : Shipwreck_6, Pygmy_6, Bogie_6
- Track 113 : Willsammy_6
- Track 114 : Jung_6
- Track 115 : Techage_6
- Track 116 : Tortellini_6
- Track 117 : Xavia_6
- Track 118 : BigNuz_6, Nazo_6
- Track 119 : Phayonce_6, ThulaThula_6
- Track 120 : Purky_6
- Track 121 : Gravaiilia_9, Gancho_8
- Track 122 : Wishmaker_9, Daegal_10, Dewey_9, Giles_9, Amymech_9, Luke_9, Ein37_9, Forge_9, Evanesce_9, LilHazelNut_9, Hail_9, Luna22_9, Kinbote_9, Ubuntu_9, HH92_9, DeepSoil15_9, OBUpride_9, Hadrien_9, Webster2_9, Amochick_9
- Track 123 : Rem711_12
- Track 124 : 32HC_13
- Track 125 : GMA4_7
- Track 126 : Mbo4_6
- Track 127 : Whack_6
- Track 128 : REQ2_06
- Track 129 : Finkle_6
- Track 130 : Juicebox_9

Summary of Final Annotations (See graph section above for start numbers):

The start number called the most often in the published annotations is 32, it was called in 135 of the 277 non-draft genes in the pham.

Genes that call this "Most Annotated" start:

- Adora_6, Amochick_9, Amymech_9, Annalisa_7, Arib1_6, Atcoo_6, Attis_6, Azula_6, Bartholomew_6, BaxterFox_6, Beenie_7, BigNuz_6, Bjaner7_6, Blino_6, Blueberry_6, Bogie_6, Brusacoram_6, Bunnies_6, CactusJack_6, Camster_6, CarolAnn_6, Clap_6, Clark_7, Cole_8, Coriander_7, Cynthia_6, Daegal_10, DeepSoil15_9, Denise_6, Dewey_9, DirtyBoi_7, Dmitri_7, DobbysSock_6, Doggs_6, Dolores_7, Donovan_6, Dorito_6, Dynamo_6, Easley_7, Ebert_6, EdnaMode_6, Ein37_9, Elesar_9, Evanesce_9, Finkle_6, FirstPlacePfu_6, Fishburne_6, Forge_9, Frokostdame_6, Gambino_6, Gancho_8, GemG_6, Giles_9, Gizermo_6, Glaske_6, Gravaillia_9, GreaseLightnin_6, HH92_9, HUHilltop_6, Hadrien_9, Hail_9, Haley23_6, Hedwig_7, Hortense_6, Howe_6, JCole_6, Jebeks_6, JuJu_6, Jung_6, Juniormint_6, Kari_6, Kiko_7, KilKor_6, Kinbote_9, Ksquared_6, Lamberg_6, Langerak_6, LilHazelnut_9, LordFarquaad_6, Luke_9, Luna22_9, Majeke_6, Malithi_6, Mangethe_6, Matteo_6, Megiddo_6, MichaelScott_7, MissRona_6, Mocha12_6, Nazo_6, Necropolis_6, Nettuno_6, OBUpride_9, Ohgeesy_6, Oregano_7, PantheRoc_5, Petra_6, Phalm_6, Phayonce_6, Pegasus_6, Phineas_6, PhriskyACE_6, Pickett_6, Polkaroo_6, Powerball_6, Purky_6, Pygmy_6, RayTheFireFly_7, Sahara_6, Samman98_7, Savage_6, Sekhmet_7, Shipwreck_6, Shlim410_6, Sidious_6, SoilAssassin_6, Sonah_6, Sproutie_6, StevieRay_6, StressBall_6, Suerte_6, Techage_6, Thespis_6, Thimann_7, ThulaThula_6, Tortellini_6, TuertoX_6, Twinkle_6, Ubuntu_9, Vasanti_6, Venti_6, Vidya_6, Walrus_6, Webster2_9, Whack_6, Whiteclaw_6, Willsammy_6, WinkNick_7, Wishmaker_9, Xavia_6, Yeet412_6, Yeezy_6, Zilizebeth_6,

Genes that have the "Most Annotated" start but do not call it:

-

Genes that do not have the "Most Annotated" start:

- 32HC_13, Abba_8, Adelaide_6, Altadena_8, ArV1_009, Araceli_16, Archis_6, Arianna_9, Ayotoya_10, BBQValindra_6, BackstagePass_6, Barco_6, BarretLemon_9, Beans_8, Begonia_6, BetterKatz_10, BlingBling_6, Bock_10, Bogota_16, Bolt007_8, BossLady_9, Bowser_6, Bran_6, Brent_8, Brylie_10, Bumble_8, Bunker_6, CalWood4100_8, CaptainKirk2_6, Chipper1996_120, Chocolat_12, Chop_10, Chubster_12, Colleen_9, Colucci_11, Conboy_12, Crosby_16, DelRio_10, Delian_6, Dina_6, DrYang_12, DumpsterDude_6, EastWest_10, EdgarPoe_12, Eyes_6, Fairfaxidum_6, Fenry_6, Francois_10, Franzy_8, GEazy_6, GMA4_7, GrandSlam_10, GravityBall_9, Grekaycon_9, Guacamole_6, Gusanita_8, Hamood_10, HannahD_6, Henoccus_16, Hirko_9, Hitter_6, HumptyDumpty_12, Intolerant_15, JKerns_9, JaNo_12, JackieB_15, Jalammah_6, JasperJr_6, Jawnski_8, JayCookie_12, Jinkies_10, Jordan_9, Juicebox_9, JustASigh_6, KBurrousTX_12, Kabreeze_12, KappaFarmDelta_6, King2_8, Klevey_8, LazerLemon_15, Lederberg_6, LeeroyJ_9, Lilmac1015_8, Linus_12, Lymara_12, Lysidious_6, MagicMan_6, Malachai_6, MalagasyRose_13, Malibo_6, Marky_16, Martha_9, Mbo4_6, Melba_6, Mellie_6, Microdon_15, MintFen_6, Mordred_12, MoyaNatalis_12, Mulch_10, Murp_6, Nadeem_10,

NancyRae_10, Nandita_10, NathanVaag_8, Nergal_11, Obliviate_6, Opie_6, PCoral7_6, Parada_10, PhrostedPhlake_6, Piccoletto_8, Pimento_9, Pipp_6, Pippa_9, Popper_8, Poushou_9, Prairie_8, PrincePatrick_6, PrincessTrina_12, REQ2_06, Rem711_12, RosiePosie_12, Ruthy_6, Ryan_10, SamW_6, Samba_6, Scavito_12, Schnabeltier_6, Shade_9, Sicarius2_10, Sonny_9, StAB_6, StevieBAY_9, Stiles_6, Stuff_15, TaeYoung_9, TaronosaurusRx_6, Timinator_9, Toast_6, Tophat_12, TouchMeNot_9, Troy_6, UNTPL_16, UmaThurman_6, Utz_6, Vibaki_10, Weirdo19_7, WheatThin_10, William_6, Wisp_6, Wocket_6, Wyborn_10, ZAYM_6, Zaheer_10, Zarbodnamra_6, Zartrosa_9, ZiggyZoo_6,

Summary by start number:

Start 23:

- Found in 6 of 301 (2.0%) of genes in pham
- Manual Annotations of this start: 3 of 277
- Called 100.0% of time when present
- Phage (with cluster) where this start called: GMA4_7 (singleton), MagicMan_6 (DB), Opie_6 (DB), Schnabeltier_6 (DB), TaronosaurusRx_6 (DB), ZAYM_6 (DB),

Start 24:

- Found in 2 of 301 (0.7%) of genes in pham
- Manual Annotations of this start: 1 of 277
- Called 100.0% of time when present
- Phage (with cluster) where this start called: 32HC_13 (Z), Rem711_12 (Z),

Start 25:

- Found in 5 of 301 (1.7%) of genes in pham
- Manual Annotations of this start: 5 of 277
- Called 100.0% of time when present
- Phage (with cluster) where this start called: Arianna_9 (EO), Colleen_9 (EO), Juicebox_9 (singleton), Poushou_9 (EO), TouchMeNot_9 (EO),

Start 26:

- Found in 3 of 301 (1.0%) of genes in pham
- Manual Annotations of this start: 3 of 277
- Called 100.0% of time when present
- Phage (with cluster) where this start called: Jinkies_10 (FL), MalagasyRose_13 (AG), Nergal_11 (AG),

Start 27:

- Found in 19 of 301 (6.3%) of genes in pham
- Manual Annotations of this start: 17 of 277
- Called 100.0% of time when present
- Phage (with cluster) where this start called: Chipper1996_120 (AR), Chocolat_12 (AR), Chubster_12 (AR), Colucci_11 (AR), Conboy_12 (AR), DrYang_12 (AR), EdgarPoe_12 (AR), HumptyDumpty_12 (AR), JaNo_12 (AR), JayCookie_12 (AR), Kabreeze_12 (AR), Linus_12 (AR), Lymara_12 (AR), Mordred_12 (AR), MoyaNatalis_12 (AR), PrincessTrina_12 (AR), RosiePosie_12 (AR), Scavito_12 (AR), Tophat_12 (AR),

Start 28:

- Found in 3 of 301 (1.0%) of genes in pham
- Manual Annotations of this start: 2 of 277

- Called 100.0% of time when present
- Phage (with cluster) where this start called: ArV1_009 (AR), EastWest_10 (AO), KBurrousTX_12 (AR),

Start 29:

- Found in 14 of 301 (4.7%) of genes in pham
- Manual Annotations of this start: 13 of 277
- Called 100.0% of time when present
- Phage (with cluster) where this start called: Beans_8 (AO1), Bolt007_8 (FH), Brent_8 (AO1), CalWood4100_8 (FH), Franzy_8 (AO1), Hirko_9 (FL), Jawnski_8 (AO1), King2_8 (AO1), Klevey_8 (FH), Lilmac1015_8 (FH), NathanVaag_8 (AO1), Piccoletto_8 (AO1), Prairie_8 (FH), Vibaki_10 (FL),

Start 30:

- Found in 20 of 301 (6.6%) of genes in pham
- Manual Annotations of this start: 19 of 277
- Called 100.0% of time when present
- Phage (with cluster) where this start called: Abba_8 (AO3), Altadena_8 (FH), BarretLemon_9 (AO2), BossLady_9 (AO2), Bumble_8 (FH), GravityBall_9 (AO2), Grekaycon_9 (AO2), JKerns_9 (AO2), Jordan_9 (AO2), LeeroyJ_9 (AO2), Martha_9 (AO2), Pippa_9 (AO2), Shade_9 (AO2), Sicarius2_10 (AO2), Sonny_9 (AO2), StevieBAY_9 (AO2), TaeYoung_9 (AO2), Timinator_9 (AO2), Wyborn_10 (AO2), Zartrosa_9 (AO2),

Start 31:

- Found in 5 of 301 (1.7%) of genes in pham
- Manual Annotations of this start: 5 of 277
- Called 100.0% of time when present
- Phage (with cluster) where this start called: Gusanita_8 (FF), Nandita_10 (FF), Popper_8 (FF), Ryan_10 (FF), Zaheer_10 (FF),

Start 32:

- Found in 143 of 301 (47.5%) of genes in pham
- Manual Annotations of this start: 135 of 277
- Called 100.0% of time when present
- Phage (with cluster) where this start called: Adora_6 (CZ4), Amochick_9 (Q), Amymech_9 (Q), Annalisa_7 (CZ4), Arib1_6 (P1), Atcoo_6 (P1), Attis_6 (CZ2), Azula_6 (CV), Bartholomew_6 (P1), BaxterFox_6 (CZ3), Beenie_7 (CZ4), BigNuz_6 (P4), Bjaness7_6 (CZ2), Blino_6 (CV), Blueberry_6 (CV), Bogie_6 (P1), Brusacorram_6 (P1), Bunnies_6 (P1), CactusJack_6 (P1), Camster_6 (P1), CarolAnn_6 (CV), Clap_6 (CZ2), Clark_7 (CZ4), Cole_8 (FF), Coriander_7 (DB), Cynthia_6 (CZ2), Daegal_10 (Q), DeepSoil15_9 (Q), Denise_6 (CZ5), Dewey_9 (Q), DirtyBoi_7 (DB), Dmitri_7 (DB), DobbysSock_6 (CZ4), Doggs_6 (DB), Dolores_7 (CZ4), Donovan_6 (P1), Dorito_6 (CZ4), Dynamo_6 (P1), Easley_7 (CZ4), Ebert_6 (CZ2), EdnaMode_6 (CZ2), Ein37_9 (Q), Elesar_9 (FF), Evanesce_9 (Q), Finkle_6 (singleton), FirstPlacePfu_6 (P1), Fishburne_6 (P1), Forge_9 (Q), Frokostdame_6 (CV), Gambino_6 (CV), Gancho_8 (Q), GemG_6 (CZ2), Giles_9 (Q), Gizermo_6 (CZ2), Glaske_6 (P1), Gravallia_9 (Q), GreaseLightnin_6 (P1), HH92_9 (Q), HUHilltop_6 (P1), Hadrien_9 (Q), Hail_9 (Q), Haley23_6 (CZ2), Hedwig_7 (DB), Hortense_6 (CZ4), Howe_6 (CZ4), JCole_6 (CZ2), Jebeks_6 (P1), JuJu_6 (CV), Jung_6 (P1), Juniomint_6 (P1), Kari_6 (P1), Kiko_7 (DB), KilKor_6 (P1), Kinbote_9 (Q), Ksquared_6 (P1), Lamberg_6 (CZ2), Langerak_6 (P1), LilHazelNut_9 (Q), LordFarquaad_6 (CZ2), Luke_9 (Q), Luna22_9 (Q), Majeke_6 (P1), Malithi_6 (P1),

Mangethe_6 (P1), Matteo_6 (CZ2), Megiddo_6 (P1), MichaelScott_7 (CZ4), MissRona_6 (CV), Mocha12_6 (CZ2), Nazo_6 (P4), Necropolis_6 (P1), Nettuno_6 (CZ2), OBUpride_9 (Q), Ohgeesy_6 (CZ), Oregono_7 (CZ4), PantheRoc_5 (CZ3), Petra_6 (CV), Phalm_6 (P1), Phayonce_6 (P5), Phegasus_6 (P1), Phineas_6 (P1), PhriskyACE_6 (CZ4), Pickett_6 (CZ2), Polkaroo_6 (P1), Powerball_6 (CZ4), Purky_6 (P6), Pygmy_6 (P1), RayTheFireFly_7 (DB), Sahara_6 (CZ2), Samman98_7 (CZ4), Savage_6 (CZ2), Sekhmet_7 (CZ4), Shipwreck_6 (P1), Shlim410_6 (CZ4), Sidious_6 (CZ7), SoilAssassin_6 (CZ2), Sonah_6 (P1), Sproutie_6 (CZ2), StevieRay_6 (P1), StressBall_6 (P1), Suerte_6 (CZ4), Techage_6 (P1), Thespis_6 (P1), Thimann_7 (CZ4), ThulaThula_6 (P5), Tortellini_6 (P2), TuertoX_6 (CZ2), Twinkle_6 (CZ4), Ubuntu_9 (Q), Vasanti_6 (CZ2), Venti_6 (P1), Vidya_6 (P1), Walrus_6 (CV), Webster2_9 (Q), Whack_6 (singleton), Whiteclaw_6 (CZ2), Willsammy_6 (P1), WinkNick_7 (CZ4), Wishmaker_9 (Q), Xavia_6 (P3), Yeet412_6 (CZ2), Yeezy_6 (CZ3), Zilizebeth_6 (P1),

Start 35:

- Found in 10 of 301 (3.3%) of genes in pham
- Manual Annotations of this start: 7 of 277
- Called 90.0% of time when present
- Phage (with cluster) where this start called: BBQValindra_6 (DB), BackstagePass_6 (DB), Bowser_6 (DB), Bunker_6 (DB), Eyes_6 (DB), GEazy_6 (DB), HannahD_6 (DB), JustASigh_6 (AH), REQ2_06 (singleton),

Start 37:

- Found in 51 of 301 (16.9%) of genes in pham
- Manual Annotations of this start: 48 of 277
- Called 100.0% of time when present
- Phage (with cluster) where this start called: Archis_6 (CV), Ayotoya_10 (DI), Barco_6 (CV), Begonia_6 (CV), BetterKatz_10 (DI), BlingBling_6 (CV), Bock_10 (DI), Brylie_10 (DI), CaptainKirk2_6 (CV), Chop_10 (DI), DelRio_10 (DI), Delian_6 (CV), DumpsterDude_6 (DW), Fairfaxidum_6 (CV), Fenry_6 (CV), Francois_10 (DI), GrandSlam_10 (DI), Guacamole_6 (CV), Hamood_10 (DI), Hitter_6 (CV), Jalammah_6 (CV), JasperJr_6 (CV), KappaFarmDelta_6 (CV), Lysidious_6 (CV), Malachai_6 (CV), Malibo_6 (DW), Melba_6 (CV), Mellie_6 (CV), MintFen_6 (CV), Mulch_10 (DI), Murp_6 (CV), Nadeem_10 (DI), NancyRae_10 (DI), Obliviate_6 (CV), PCoral7_6 (CV), Parada_10 (DI), PhrostedPhlake_6 (CV), Pimento_9 (DI), Pipp_6 (CV), PrincePatrick_6 (CV), Ruthy_6 (DW), Samba_6 (CV), Toast_6 (CV), UmaThurman_6 (CV), Utz_6 (CV), WheatThin_10 (DI), William_6 (CV), Wisp_6 (CV), Wocket_6 (CV), Zarbodnamra_6 (CV), ZiggyZoo_6 (CV),

Start 38:

- Found in 20 of 301 (6.6%) of genes in pham
- Manual Annotations of this start: 18 of 277
- Called 95.0% of time when present
- Phage (with cluster) where this start called: Adelaide_6 (EP), Araceli_16 (BH), Bogota_16 (BH), Bran_6 (EP), Crosby_16 (BH), Dina_6 (EP), Henoccus_16 (BH), Intolerant_15 (BH), JackieB_15 (BH), LazerLemon_15 (BH), Lederberg_6 (EP), Marky_16 (BH), Mbo4_6 (singleton), Microdon_15 (BH), SamW_6 (EP), StAB_6 (EP), Stiles_6 (EP), Troy_6 (EP), UNTPL_16 (BH),

Start 39:

- Found in 11 of 301 (3.7%) of genes in pham
- Manual Annotations of this start: 1 of 277

- Called 9.1% of time when present
- Phage (with cluster) where this start called: Stuff_15 (BH),

Start 41:

- Found in 1 of 301 (0.3%) of genes in pham
- No Manual Annotations of this start.
- Called 100.0% of time when present
- Phage (with cluster) where this start called: Weirido19_7 (AH),

Summary by clusters:

There are 32 clusters represented in this pham: singleton, DI, CZ2, CZ3, DB, CZ7, CZ4, CZ5, FF, FH, DW, FL, P4, EP, AH, P2, P3, EO, P1, P6, AG, P5, BH, AO, Q, CZ, AR, AO3, AO2, AO1, Z, CV,

Info for manual annotations of cluster AG:

- Start number 26 was manually annotated 2 times for cluster AG.

Info for manual annotations of cluster AH:

- Start number 35 was manually annotated 1 time for cluster AH.

Info for manual annotations of cluster AO:

- Start number 28 was manually annotated 1 time for cluster AO.

Info for manual annotations of cluster AO1:

- Start number 29 was manually annotated 7 times for cluster AO1.

Info for manual annotations of cluster AO2:

- Start number 30 was manually annotated 16 times for cluster AO2.

Info for manual annotations of cluster AO3:

- Start number 30 was manually annotated 1 time for cluster AO3.

Info for manual annotations of cluster AR:

- Start number 27 was manually annotated 17 times for cluster AR.
- Start number 28 was manually annotated 1 time for cluster AR.

Info for manual annotations of cluster BH:

- Start number 38 was manually annotated 10 times for cluster BH.
- Start number 39 was manually annotated 1 time for cluster BH.

Info for manual annotations of cluster CV:

- Start number 32 was manually annotated 10 times for cluster CV.
- Start number 37 was manually annotated 32 times for cluster CV.

Info for manual annotations of cluster CZ:

- Start number 32 was manually annotated 1 time for cluster CZ.

Info for manual annotations of cluster CZ2:

- Start number 32 was manually annotated 23 times for cluster CZ2.

Info for manual annotations of cluster CZ3:

- Start number 32 was manually annotated 2 times for cluster CZ3.

Info for manual annotations of cluster CZ4:

- Start number 32 was manually annotated 19 times for cluster CZ4.

Info for manual annotations of cluster CZ5:

- Start number 32 was manually annotated 1 time for cluster CZ5.

Info for manual annotations of cluster CZ7:

- Start number 32 was manually annotated 1 time for cluster CZ7.

Info for manual annotations of cluster DB:

- Start number 23 was manually annotated 3 times for cluster DB.
- Start number 32 was manually annotated 6 times for cluster DB.
- Start number 35 was manually annotated 6 times for cluster DB.

Info for manual annotations of cluster DI:

- Start number 37 was manually annotated 13 times for cluster DI.

Info for manual annotations of cluster DW:

- Start number 37 was manually annotated 3 times for cluster DW.

Info for manual annotations of cluster EO:

- Start number 25 was manually annotated 4 times for cluster EO.

Info for manual annotations of cluster EP:

- Start number 38 was manually annotated 8 times for cluster EP.

Info for manual annotations of cluster FF:

- Start number 31 was manually annotated 5 times for cluster FF.
- Start number 32 was manually annotated 2 times for cluster FF.

Info for manual annotations of cluster FH:

- Start number 29 was manually annotated 4 times for cluster FH.
- Start number 30 was manually annotated 2 times for cluster FH.

Info for manual annotations of cluster FL:

- Start number 26 was manually annotated 1 time for cluster FL.
- Start number 29 was manually annotated 2 times for cluster FL.

Info for manual annotations of cluster P1:

- Start number 32 was manually annotated 39 times for cluster P1.

Info for manual annotations of cluster P2:

- Start number 32 was manually annotated 1 time for cluster P2.

Info for manual annotations of cluster P3:

- Start number 32 was manually annotated 1 time for cluster P3.

Info for manual annotations of cluster P4:

- Start number 32 was manually annotated 2 times for cluster P4.

Info for manual annotations of cluster P5:

- Start number 32 was manually annotated 2 times for cluster P5.

Info for manual annotations of cluster P6:

- Start number 32 was manually annotated 1 time for cluster P6.

Info for manual annotations of cluster Q:

- Start number 32 was manually annotated 22 times for cluster Q.

Info for manual annotations of cluster Z:

- Start number 24 was manually annotated 1 time for cluster Z.

Gene Information:

Gene: 32HC_13 Start: 8256, Stop: 9161, Start Num: 24

Candidate Starts for 32HC_13:

(Start: 24 @8256 has 1 MA's), (48, 8325), (88, 8586), (96, 8625), (111, 8703), (132, 8787), (153, 8874), (194, 9036), (215, 9108), (217, 9114),

Gene: Abba_8 Start: 7403, Stop: 8290, Start Num: 30

Candidate Starts for Abba_8:

(Start: 30 @7403 has 19 MA's), (69, 7568), (75, 7649), (95, 7751), (101, 7787), (123, 7880), (125, 7892), (172, 8072), (188, 8132), (208, 8207), (214, 8228),

Gene: Adelaide_6 Start: 5118, Stop: 6050, Start Num: 38

Candidate Starts for Adelaide_6:

(22, 5085), (Start: 38 @5118 has 18 MA's), (75, 5355), (79, 5379), (85, 5409), (88, 5421), (95, 5457), (96, 5460), (101, 5493), (138, 5664), (144, 5691), (155, 5736), (168, 5790), (180, 5838), (196, 5910), (204, 5946), (205, 5958), (206, 5961), (210, 5982), (219, 6021), (222, 6039),

Gene: Adora_6 Start: 4904, Stop: 5836, Start Num: 32

Candidate Starts for Adora_6:

(Start: 32 @4904 has 135 MA's), (42, 4928), (49, 4967), (50, 4970), (57, 5012), (68, 5075), (86, 5210), (91, 5228), (96, 5255), (112, 5339), (114, 5348), (126, 5411), (140, 5468), (145, 5486), (154, 5513), (157, 5537), (161, 5552), (168, 5582), (176, 5612), (185, 5651), (214, 5783), (217, 5792),

Gene: Altadena_8 Start: 7167, Stop: 8045, Start Num: 30

Candidate Starts for Altadena_8:

(Start: 30 @7167 has 19 MA's), (70, 7341), (75, 7413), (81, 7443), (88, 7479), (95, 7515), (113, 7605), (123, 7644), (179, 7860), (208, 7971),

Gene: Amochick_9 Start: 6580, Stop: 7536, Start Num: 32

Candidate Starts for Amochick_9:

(Start: 32 @6580 has 135 MA's), (49, 6640), (56, 6682), (57, 6685), (75, 6823), (84, 6865), (88, 6889), (91, 6901), (97, 6940), (98, 6943), (99, 6949), (109, 6997), (112, 7012), (121, 7057), (145, 7174), (150, 7189), (154, 7201), (156, 7219), (163, 7249), (173, 7291), (174, 7294), (176, 7306), (186, 7348), (195, 7390), (223, 7525),

Gene: Amymech_9 Start: 6586, Stop: 7542, Start Num: 32

Candidate Starts for Amymech_9:

(Start: 32 @6586 has 135 MA's), (49, 6646), (56, 6688), (57, 6691), (75, 6829), (84, 6871), (88, 6895), (91, 6907), (97, 6946), (98, 6949), (99, 6955), (109, 7003), (112, 7018), (121, 7063), (145, 7180), (150, 7195), (154, 7207), (156, 7225), (163, 7255), (173, 7297), (174, 7300), (176, 7312), (186, 7354), (195,

7396), (223, 7531),

Gene: Annalisa_7 Start: 5345, Stop: 6268, Start Num: 32

Candidate Starts for Annalisa_7:

(Start: 32 @5345 has 135 MA's), (53, 5429), (62, 5477), (102, 5732), (105, 5750), (137, 5897), (138, 5900), (140, 5912), (159, 5984), (168, 6017), (187, 6092), (194, 6125), (208, 6191), (212, 6206), (214, 6212), (222, 6257),

Gene: ArV1_009 Start: 8041, Stop: 8937, Start Num: 28

Candidate Starts for ArV1_009:

(9, 7894), (10, 7897), (11, 7906), (13, 7927), (15, 7948), (19, 7963), (Start: 28 @8041 has 2 MA's), (36, 8053), (55, 8140), (68, 8212), (74, 8275), (76, 8302), (88, 8365), (102, 8440), (107, 8464), (114, 8500), (129, 8563), (161, 8698), (164, 8713), (191, 8800), (214, 8887),

Gene: Araceli_16 Start: 11657, Stop: 12625, Start Num: 38

Candidate Starts for Araceli_16:

(Start: 38 @11657 has 18 MA's), (Start: 39 @11663 has 1 MA's), (43, 11681), (56, 11756), (60, 11774), (61, 11777), (73, 11867), (74, 11873), (79, 11921), (84, 11939), (96, 12002), (97, 12014), (98, 12017), (105, 12056), (149, 12266), (153, 12278), (157, 12305), (161, 12323), (171, 12371), (177, 12395), (209, 12530), (212, 12539),

Gene: Archis_6 Start: 5209, Stop: 6138, Start Num: 37

Candidate Starts for Archis_6:

(Start: 37 @5209 has 48 MA's), (42, 5224), (47, 5248), (53, 5284), (57, 5308), (72, 5413), (91, 5524), (96, 5551), (114, 5644), (115, 5650), (144, 5782), (154, 5812), (157, 5836), (161, 5851), (174, 5899), (176, 5911), (223, 6130),

Gene: Arianna_9 Start: 7329, Stop: 8234, Start Num: 25

Candidate Starts for Arianna_9:

(Start: 25 @7329 has 5 MA's), (49, 7398), (59, 7455), (70, 7515), (71, 7533), (72, 7551), (93, 7680), (96, 7689), (101, 7722), (112, 7770), (144, 7914), (150, 7932), (164, 7989), (192, 8094), (195, 8112), (213, 8175),

Gene: Arib1_6 Start: 5299, Stop: 6243, Start Num: 32

Candidate Starts for Arib1_6:

(Start: 32 @5299 has 135 MA's), (45, 5332), (53, 5383), (75, 5545), (90, 5620), (95, 5647), (96, 5650), (100, 5674), (103, 5689), (105, 5704), (126, 5800), (137, 5854), (141, 5872), (151, 5905), (165, 5977), (184, 6058), (191, 6085), (200, 6121), (203, 6136), (214, 6187), (216, 6193), (222, 6232),

Gene: Atcoo_6 Start: 5282, Stop: 6226, Start Num: 32

Candidate Starts for Atcoo_6:

(Start: 32 @5282 has 135 MA's), (46, 5327), (53, 5366), (75, 5528), (90, 5603), (95, 5630), (96, 5633), (100, 5657), (103, 5672), (105, 5687), (122, 5762), (126, 5783), (141, 5855), (151, 5888), (154, 5897), (165, 5960), (184, 6041), (185, 6044), (191, 6068), (200, 6104), (203, 6119), (214, 6170), (216, 6176), (217, 6179), (222, 6215),

Gene: Attis_6 Start: 4854, Stop: 5777, Start Num: 32

Candidate Starts for Attis_6:

(Start: 32 @4854 has 135 MA's), (53, 4938), (62, 4986), (81, 5130), (100, 5229), (102, 5241), (138, 5409), (159, 5493), (164, 5514), (168, 5526), (179, 5565), (187, 5601), (194, 5634), (214, 5721),

Gene: Ayotoya_10 Start: 7129, Stop: 8061, Start Num: 37

Candidate Starts for Ayotoya_10:

(Start: 37 @7129 has 48 MA's), (42, 7144), (52, 7201), (53, 7204), (55, 7216), (75, 7366), (88, 7432), (91, 7444), (97, 7483), (114, 7564), (154, 7732), (161, 7771), (173, 7816), (183, 7864), (215, 8005), (223, 8050),

Gene: Azula_6 Start: 5041, Stop: 5970, Start Num: 32

Candidate Starts for Azula_6:

(Start: 32 @5041 has 135 MA's), (42, 5062), (50, 5104), (60, 5161), (68, 5209), (75, 5284), (81, 5314), (86, 5344), (91, 5362), (96, 5389), (97, 5401), (101, 5422), (112, 5473), (120, 5509), (140, 5602), (144, 5617), (154, 5647), (176, 5746), (184, 5782), (188, 5800), (214, 5917), (217, 5926),

Gene: BBQValindra_6 Start: 5200, Stop: 6117, Start Num: 35

Candidate Starts for BBQValindra_6:

(16, 5116), (Start: 35 @5200 has 7 MA's), (64, 5335), (68, 5368), (81, 5473), (127, 5698), (140, 5764), (141, 5767), (145, 5782), (149, 5794), (150, 5797), (153, 5806), (159, 5836), (162, 5851), (164, 5857), (187, 5944), (203, 6010), (207, 6031), (208, 6040), (214, 6061),

Gene: BackstagePass_6 Start: 5177, Stop: 6094, Start Num: 35

Candidate Starts for BackstagePass_6:

(16, 5093), (Start: 35 @5177 has 7 MA's), (64, 5312), (68, 5345), (81, 5450), (127, 5675), (140, 5741), (141, 5744), (145, 5759), (149, 5771), (150, 5774), (153, 5783), (159, 5813), (162, 5828), (164, 5834), (187, 5921), (194, 5954), (203, 5987), (207, 6008), (208, 6017), (214, 6038),

Gene: Barco_6 Start: 5209, Stop: 6138, Start Num: 37

Candidate Starts for Barco_6:

(Start: 37 @5209 has 48 MA's), (42, 5224), (47, 5248), (53, 5284), (57, 5308), (72, 5413), (75, 5446), (91, 5524), (96, 5551), (114, 5644), (115, 5650), (144, 5782), (154, 5812), (157, 5836), (161, 5851), (174, 5899), (176, 5911), (223, 6130),

Gene: BarretLemon_9 Start: 7550, Stop: 8437, Start Num: 30

Candidate Starts for BarretLemon_9:

(Start: 30 @7550 has 19 MA's), (68, 7718), (81, 7832), (88, 7868), (99, 7928), (114, 7997), (133, 8081), (135, 8102), (146, 8138), (170, 8219), (176, 8237), (188, 8285), (208, 8360), (214, 8381),

Gene: Bartholomew_6 Start: 5294, Stop: 6238, Start Num: 32

Candidate Starts for Bartholomew_6:

(Start: 32 @5294 has 135 MA's), (46, 5339), (53, 5378), (75, 5540), (90, 5615), (95, 5642), (100, 5669), (103, 5684), (105, 5699), (122, 5774), (126, 5795), (141, 5867), (151, 5900), (154, 5909), (165, 5972), (184, 6053), (185, 6056), (191, 6080), (200, 6116), (203, 6131), (214, 6182), (216, 6188), (217, 6191), (222, 6227),

Gene: BaxterFox_6 Start: 4895, Stop: 5824, Start Num: 32

Candidate Starts for BaxterFox_6:

(Start: 32 @4895 has 135 MA's), (50, 4958), (57, 5000), (75, 5138), (86, 5198), (91, 5216), (112, 5327), (144, 5471), (154, 5501), (173, 5585), (176, 5600), (199, 5699), (214, 5771), (217, 5780),

Gene: Beans_8 Start: 7217, Stop: 8110, Start Num: 29

Candidate Starts for Beans_8:

(Start: 29 @7217 has 13 MA's), (75, 7472), (81, 7502), (95, 7574), (131, 7736), (135, 7772), (176, 7907), (188, 7955), (203, 8000), (208, 8030), (214, 8051),

Gene: Beenie_7 Start: 5345, Stop: 6268, Start Num: 32

Candidate Starts for Beenie_7:

(Start: 32 @5345 has 135 MA's), (53, 5429), (62, 5477), (102, 5732), (105, 5750), (137, 5897), (140, 5912), (159, 5984), (168, 6017), (187, 6092), (194, 6125), (208, 6191), (214, 6212), (222, 6257),

Gene: Begonia_6 Start: 5212, Stop: 6141, Start Num: 37

Candidate Starts for Begonia_6:

(Start: 37 @5212 has 48 MA's), (42, 5227), (47, 5251), (53, 5287), (57, 5311), (72, 5416), (75, 5449), (91, 5527), (96, 5554), (114, 5647), (115, 5653), (144, 5785), (154, 5815), (157, 5839), (161, 5854), (174, 5902), (176, 5914), (223, 6133),

Gene: BetterKatz_10 Start: 7097, Stop: 8029, Start Num: 37

Candidate Starts for BetterKatz_10:

(Start: 37 @7097 has 48 MA's), (42, 7112), (52, 7169), (53, 7172), (55, 7184), (75, 7334), (81, 7364), (88, 7400), (91, 7412), (97, 7451), (114, 7532), (154, 7700), (161, 7739), (183, 7832), (215, 7973), (223, 8018),

Gene: BigNuz_6 Start: 5266, Stop: 6216, Start Num: 32

Candidate Starts for BigNuz_6:

(Start: 32 @5266 has 135 MA's), (53, 5350), (54, 5353), (90, 5587), (95, 5614), (100, 5641), (103, 5656), (105, 5671), (126, 5773), (141, 5845), (151, 5878), (154, 5887), (159, 5923), (164, 5944), (165, 5950), (181, 6016), (184, 6031), (191, 6058), (203, 6109), (216, 6166), (222, 6205),

Gene: Bjaner7_6 Start: 4854, Stop: 5777, Start Num: 32

Candidate Starts for Bjaner7_6:

(Start: 32 @4854 has 135 MA's), (53, 4938), (62, 4986), (81, 5130), (100, 5229), (102, 5241), (138, 5409), (159, 5493), (164, 5514), (168, 5526), (179, 5565), (187, 5601), (194, 5634), (214, 5721),

Gene: BlingBling_6 Start: 5209, Stop: 6138, Start Num: 37

Candidate Starts for BlingBling_6:

(Start: 37 @5209 has 48 MA's), (42, 5224), (47, 5248), (53, 5284), (57, 5308), (75, 5446), (91, 5524), (96, 5551), (114, 5644), (115, 5650), (144, 5782), (154, 5812), (157, 5836), (161, 5851), (174, 5899), (176, 5911), (223, 6130),

Gene: Blino_6 Start: 5044, Stop: 5973, Start Num: 32

Candidate Starts for Blino_6:

(Start: 32 @5044 has 135 MA's), (42, 5065), (50, 5107), (60, 5164), (68, 5212), (75, 5287), (81, 5317), (86, 5347), (91, 5365), (96, 5392), (97, 5404), (101, 5425), (112, 5476), (120, 5512), (140, 5605), (144, 5620), (154, 5650), (173, 5734), (184, 5785), (188, 5803), (214, 5920), (217, 5929),

Gene: Blueberry_6 Start: 5041, Stop: 5970, Start Num: 32

Candidate Starts for Blueberry_6:

(Start: 32 @5041 has 135 MA's), (42, 5062), (50, 5104), (60, 5161), (68, 5209), (75, 5284), (81, 5314), (86, 5344), (91, 5362), (96, 5389), (97, 5401), (101, 5422), (112, 5473), (120, 5509), (140, 5602), (144, 5617), (154, 5647), (176, 5746), (184, 5782), (188, 5800), (214, 5917), (217, 5926),

Gene: Bock_10 Start: 6847, Stop: 7779, Start Num: 37

Candidate Starts for Bock_10:

(Start: 37 @6847 has 48 MA's), (42, 6862), (52, 6919), (53, 6922), (55, 6934), (75, 7084), (81, 7114), (88, 7150), (91, 7162), (97, 7201), (114, 7282), (154, 7450), (161, 7489), (173, 7534), (183, 7582), (215, 7723), (223, 7768),

Gene: Bogie_6 Start: 5282, Stop: 6226, Start Num: 32

Candidate Starts for Bogie_6:

(Start: 32 @5282 has 135 MA's), (46, 5327), (53, 5366), (75, 5528), (90, 5603), (95, 5630), (100, 5657), (103, 5672), (105, 5687), (122, 5762), (126, 5783), (141, 5855), (151, 5888), (154, 5897), (165, 5960), (184, 6041), (200, 6104), (203, 6119), (216, 6176), (217, 6179), (222, 6215),

Gene: Bogota_16 Start: 11786, Stop: 12754, Start Num: 38

Candidate Starts for Bogota_16:

(Start: 38 @11786 has 18 MA's), (Start: 39 @11792 has 1 MA's), (43, 11810), (56, 11885), (60, 11903), (61, 11906), (73, 11996), (74, 12002), (79, 12050), (84, 12068), (96, 12131), (97, 12143), (98, 12146), (105, 12185), (149, 12395), (153, 12407), (157, 12434), (158, 12443), (171, 12500), (177, 12524), (209, 12659), (212, 12668),

Gene: Bolt007_8 Start: 7115, Stop: 7996, Start Num: 29

Candidate Starts for Bolt007_8:

(Start: 29 @7115 has 13 MA's), (63, 7247), (68, 7280), (75, 7364), (76, 7367), (98, 7484), (116, 7574), (123, 7595), (135, 7664), (150, 7712), (172, 7787), (208, 7922), (221, 7976),

Gene: BossLady_9 Start: 7568, Stop: 8455, Start Num: 30

Candidate Starts for BossLady_9:

(Start: 30 @7568 has 19 MA's), (81, 7850), (88, 7886), (95, 7922), (114, 8015), (116, 8030), (131, 8084), (133, 8099), (145, 8153), (176, 8255), (188, 8303), (214, 8399),

Gene: Bowser_6 Start: 5198, Stop: 6115, Start Num: 35

Candidate Starts for Bowser_6:

(4, 4940), (Start: 35 @5198 has 7 MA's), (64, 5333), (68, 5366), (81, 5471), (127, 5696), (140, 5762), (141, 5765), (145, 5780), (149, 5792), (150, 5795), (159, 5834), (162, 5849), (164, 5855), (187, 5942), (194, 5975), (203, 6008), (207, 6029), (208, 6038), (214, 6059),

Gene: Bran_6 Start: 5123, Stop: 6055, Start Num: 38

Candidate Starts for Bran_6:

(21, 5087), (22, 5090), (Start: 38 @5123 has 18 MA's), (75, 5360), (79, 5384), (85, 5414), (88, 5426), (95, 5462), (96, 5465), (101, 5498), (138, 5669), (144, 5696), (155, 5741), (168, 5795), (180, 5843), (196, 5915), (204, 5951), (206, 5966), (210, 5987), (219, 6026), (222, 6044),

Gene: Brent_8 Start: 7215, Stop: 8108, Start Num: 29

Candidate Starts for Brent_8:

(Start: 29 @7215 has 13 MA's), (68, 7386), (75, 7470), (76, 7473), (81, 7500), (99, 7596), (114, 7665), (131, 7734), (135, 7770), (176, 7905), (188, 7953), (201, 7989), (208, 8028),

Gene: Brusacoram_6 Start: 5281, Stop: 6225, Start Num: 32

Candidate Starts for Brusacoram_6:

(Start: 32 @5281 has 135 MA's), (46, 5326), (53, 5365), (75, 5527), (90, 5602), (95, 5629), (96, 5632), (100, 5656), (103, 5671), (105, 5686), (122, 5761), (126, 5782), (141, 5854), (151, 5887), (154, 5896), (165, 5959), (184, 6040), (185, 6043), (191, 6067), (200, 6103), (203, 6118), (214, 6169), (216, 6175), (217, 6178), (222, 6214),

Gene: Brylie_10 Start: 6844, Stop: 7776, Start Num: 37

Candidate Starts for Brylie_10:

(Start: 37 @6844 has 48 MA's), (42, 6859), (52, 6916), (53, 6919), (55, 6931), (75, 7081), (81, 7111), (88, 7147), (91, 7159), (97, 7198), (114, 7279), (154, 7447), (161, 7486), (183, 7579), (215, 7720), (223, 7765),

Gene: Bumble_8 Start: 7175, Stop: 8062, Start Num: 30

Candidate Starts for Bumble_8:

(Start: 30 @7175 has 19 MA's), (68, 7337), (69, 7340), (75, 7421), (76, 7424), (81, 7451), (95, 7523), (123, 7652), (142, 7742), (179, 7868), (208, 7979), (221, 8033),

Gene: Bunker_6 Start: 5200, Stop: 6117, Start Num: 35

Candidate Starts for Bunker_6:

(16, 5116), (Start: 35 @5200 has 7 MA's), (64, 5335), (81, 5473), (127, 5698), (140, 5764), (141, 5767), (145, 5782), (149, 5794), (150, 5797), (153, 5806), (159, 5836), (162, 5851), (164, 5857), (187, 5944), (203, 6010), (207, 6031), (208, 6040), (214, 6061),

Gene: Bunnies_6 Start: 5294, Stop: 6238, Start Num: 32

Candidate Starts for Bunnies_6:

(Start: 32 @5294 has 135 MA's), (46, 5339), (53, 5378), (75, 5540), (90, 5615), (95, 5642), (96, 5645), (100, 5669), (103, 5684), (105, 5699), (122, 5774), (126, 5795), (141, 5867), (151, 5900), (154, 5909), (165, 5972), (184, 6053), (185, 6056), (191, 6080), (200, 6116), (203, 6131), (214, 6182), (216, 6188), (217, 6191), (222, 6227),

Gene: CactusJack_6 Start: 5281, Stop: 6225, Start Num: 32

Candidate Starts for CactusJack_6:

(Start: 32 @5281 has 135 MA's), (46, 5326), (53, 5365), (75, 5527), (90, 5602), (95, 5629), (100, 5656), (103, 5671), (105, 5686), (122, 5761), (126, 5782), (141, 5854), (151, 5887), (154, 5896), (165, 5959), (184, 6040), (185, 6043), (191, 6067), (200, 6103), (203, 6118), (214, 6169), (216, 6175), (217, 6178), (222, 6214),

Gene: CalWood4100_8 Start: 7095, Stop: 7982, Start Num: 29

Candidate Starts for CalWood4100_8:

(Start: 29 @7095 has 13 MA's), (63, 7227), (68, 7260), (75, 7344), (83, 7380), (88, 7410), (98, 7464), (123, 7575), (150, 7692), (179, 7791), (201, 7863), (202, 7869), (208, 7902),

Gene: Camster_6 Start: 5294, Stop: 6238, Start Num: 32

Candidate Starts for Camster_6:

(Start: 32 @5294 has 135 MA's), (46, 5339), (53, 5378), (75, 5540), (90, 5615), (95, 5642), (100, 5669), (103, 5684), (105, 5699), (122, 5774), (126, 5795), (141, 5867), (151, 5900), (154, 5909), (165, 5972), (184, 6053), (185, 6056), (191, 6080), (200, 6116), (203, 6131), (214, 6182), (216, 6188), (217, 6191), (222, 6227),

Gene: CaptainKirk2_6 Start: 5209, Stop: 6138, Start Num: 37

Candidate Starts for CaptainKirk2_6:

(Start: 37 @5209 has 48 MA's), (42, 5224), (47, 5248), (53, 5284), (57, 5308), (72, 5413), (75, 5446), (91, 5524), (96, 5551), (114, 5644), (115, 5650), (144, 5782), (154, 5812), (157, 5836), (161, 5851), (174, 5899), (176, 5911), (223, 6130),

Gene: CarolAnn_6 Start: 5043, Stop: 5972, Start Num: 32

Candidate Starts for CarolAnn_6:

(Start: 32 @5043 has 135 MA's), (42, 5064), (50, 5106), (60, 5163), (68, 5211), (75, 5286), (81, 5316), (86, 5346), (91, 5364), (96, 5391), (97, 5403), (101, 5424), (112, 5475), (120, 5511), (140, 5604), (144, 5619), (154, 5649), (173, 5733), (184, 5784), (188, 5802), (214, 5919), (217, 5928),

Gene: Chipper1996_120 Start: 9682, Stop: 10578, Start Num: 27

Candidate Starts for Chipper1996_120:

(Start: 27 @9682 has 17 MA's), (68, 9853), (72, 9907), (76, 9943), (92, 10021), (107, 10105), (129, 10204), (155, 10324), (191, 10441), (193, 10456), (214, 10528),

Gene: Chocolat_12 Start: 9683, Stop: 10579, Start Num: 27

Candidate Starts for Chocolat_12:

(Start: 27 @9683 has 17 MA's), (68, 9854), (74, 9917), (92, 10022), (107, 10106), (129, 10205), (155, 10325), (191, 10442), (193, 10457), (214, 10529),

Gene: Chop_10 Start: 6877, Stop: 7809, Start Num: 37

Candidate Starts for Chop_10:

(Start: 37 @6877 has 48 MA's), (42, 6892), (52, 6949), (53, 6952), (55, 6964), (75, 7114), (88, 7180), (91, 7192), (97, 7231), (114, 7312), (154, 7480), (161, 7519), (173, 7564), (183, 7612), (215, 7753), (223, 7798),

Gene: Chubster_12 Start: 9453, Stop: 10349, Start Num: 27

Candidate Starts for Chubster_12:

(Start: 27 @9453 has 17 MA's), (68, 9624), (74, 9687), (92, 9792), (107, 9876), (129, 9975), (155, 10095), (191, 10212), (193, 10227), (214, 10299),

Gene: Clap_6 Start: 4854, Stop: 5777, Start Num: 32

Candidate Starts for Clap_6:

(Start: 32 @4854 has 135 MA's), (53, 4938), (62, 4986), (81, 5130), (100, 5229), (102, 5241), (138, 5409), (159, 5493), (164, 5514), (168, 5526), (179, 5565), (187, 5601), (194, 5634), (214, 5721),

Gene: Clark_7 Start: 5345, Stop: 6268, Start Num: 32

Candidate Starts for Clark_7:

(Start: 32 @5345 has 135 MA's), (53, 5429), (62, 5477), (102, 5732), (105, 5750), (137, 5897), (138, 5900), (140, 5912), (159, 5984), (168, 6017), (187, 6092), (194, 6125), (208, 6191), (212, 6206), (214, 6212), (222, 6257),

Gene: Cole_8 Start: 6211, Stop: 7122, Start Num: 32

Candidate Starts for Cole_8:

(20, 6163), (Start: 32 @6211 has 135 MA's), (137, 6763), (145, 6796), (200, 7000), (214, 7066), (216, 7072),

Gene: Colleen_9 Start: 7329, Stop: 8234, Start Num: 25

Candidate Starts for Colleen_9:

(Start: 25 @7329 has 5 MA's), (49, 7398), (59, 7455), (70, 7515), (71, 7533), (72, 7551), (93, 7680), (96, 7689), (101, 7722), (112, 7770), (144, 7914), (150, 7932), (164, 7989), (192, 8094), (195, 8112), (213, 8175),

Gene: Colucci_11 Start: 9183, Stop: 10079, Start Num: 27

Candidate Starts for Colucci_11:

(Start: 27 @9183 has 17 MA's), (36, 9195), (55, 9282), (68, 9354), (76, 9444), (96, 9546), (107, 9606), (114, 9642), (154, 9810), (155, 9825), (191, 9942), (193, 9957), (214, 10029),

Gene: Conboy_12 Start: 9681, Stop: 10577, Start Num: 27

Candidate Starts for Conboy_12:

(Start: 27 @9681 has 17 MA's), (68, 9852), (72, 9906), (76, 9942), (92, 10020), (107, 10104), (129, 10203), (155, 10323), (191, 10440), (193, 10455), (214, 10527),

Gene: Coriander_7 Start: 5582, Stop: 6502, Start Num: 32

Candidate Starts for Coriander_7:

(10, 5435), (Start: 32 @5582 has 135 MA's), (81, 5858), (118, 6047), (124, 6068), (125, 6077), (129, 6089), (138, 6137), (141, 6152), (145, 6167), (162, 6236), (164, 6242), (179, 6293), (181, 6302), (187, 6329), (194, 6362), (203, 6395), (207, 6416), (208, 6425), (222, 6491),

Gene: Crosby_16 Start: 11773, Stop: 12753, Start Num: 38

Candidate Starts for Crosby_16:

(Start: 38 @11773 has 18 MA's), (Start: 39 @11779 has 1 MA's), (43, 11797), (56, 11872), (60, 11890), (61, 11893), (73, 11983), (74, 11989), (79, 12037), (84, 12055), (96, 12118), (97, 12130), (98, 12133), (105, 12172), (148, 12388), (149, 12391), (157, 12430), (188, 12571), (209, 12655), (212, 12664), (221, 12703),

Gene: Cynthia_6 Start: 4854, Stop: 5777, Start Num: 32

Candidate Starts for Cynthia_6:

(Start: 32 @4854 has 135 MA's), (53, 4938), (62, 4986), (81, 5130), (100, 5229), (102, 5241), (138, 5409), (159, 5493), (164, 5514), (168, 5526), (179, 5565), (187, 5601), (194, 5634), (214, 5721),

Gene: Daegal_10 Start: 6877, Stop: 7833, Start Num: 32

Candidate Starts for Daegal_10:

(Start: 32 @6877 has 135 MA's), (49, 6937), (56, 6979), (57, 6982), (75, 7120), (84, 7162), (88, 7186), (91, 7198), (97, 7237), (98, 7240), (99, 7246), (109, 7294), (112, 7309), (121, 7354), (145, 7471), (150, 7486), (154, 7498), (156, 7516), (163, 7546), (173, 7588), (174, 7591), (176, 7603), (186, 7645), (195, 7687), (223, 7822),

Gene: DeepSoil15_9 Start: 6586, Stop: 7542, Start Num: 32

Candidate Starts for DeepSoil15_9:

(Start: 32 @6586 has 135 MA's), (49, 6646), (56, 6688), (57, 6691), (75, 6829), (84, 6871), (88, 6895), (91, 6907), (97, 6946), (98, 6949), (99, 6955), (109, 7003), (112, 7018), (121, 7063), (145, 7180), (150, 7195), (154, 7207), (156, 7225), (163, 7255), (173, 7297), (174, 7300), (176, 7312), (186, 7354), (195, 7396), (223, 7531),

Gene: DelRio_10 Start: 7141, Stop: 8073, Start Num: 37

Candidate Starts for DelRio_10:

(Start: 37 @7141 has 48 MA's), (42, 7156), (52, 7213), (53, 7216), (55, 7228), (67, 7300), (75, 7378), (88, 7444), (91, 7456), (97, 7495), (114, 7576), (154, 7744), (161, 7783), (174, 7831), (183, 7876), (215, 8017), (223, 8062),

Gene: Delian_6 Start: 5209, Stop: 6138, Start Num: 37

Candidate Starts for Delian_6:

(Start: 37 @5209 has 48 MA's), (42, 5224), (47, 5248), (53, 5284), (57, 5308), (72, 5413), (75, 5446), (91, 5524), (96, 5551), (114, 5644), (115, 5650), (144, 5782), (154, 5812), (157, 5836), (161, 5851), (174, 5899), (176, 5911), (223, 6130),

Gene: Denise_6 Start: 4863, Stop: 5786, Start Num: 32

Candidate Starts for Denise_6:

(Start: 32 @4863 has 135 MA's), (53, 4947), (62, 4995), (81, 5139), (100, 5238), (102, 5250), (138, 5418), (159, 5502), (164, 5523), (168, 5535), (179, 5574), (187, 5610), (194, 5643), (214, 5730),

Gene: Dewey_9 Start: 6586, Stop: 7542, Start Num: 32

Candidate Starts for Dewey_9:

(Start: 32 @6586 has 135 MA's), (49, 6646), (56, 6688), (57, 6691), (75, 6829), (84, 6871), (88, 6895), (91, 6907), (97, 6946), (98, 6949), (99, 6955), (109, 7003), (112, 7018), (121, 7063), (145, 7180), (150, 7195), (154, 7207), (156, 7225), (163, 7255), (173, 7297), (174, 7300), (176, 7312), (186, 7354), (195, 7396), (223, 7531),

Gene: Dina_6 Start: 5118, Stop: 6050, Start Num: 38

Candidate Starts for Dina_6:

(22, 5085), (Start: 38 @5118 has 18 MA's), (75, 5355), (79, 5379), (85, 5409), (88, 5421), (95, 5457), (96, 5460), (101, 5493), (138, 5664), (144, 5691), (155, 5736), (168, 5790), (180, 5838), (196, 5910), (204, 5946), (205, 5958), (206, 5961), (210, 5982), (219, 6021), (222, 6039),

Gene: DirtyBoi_7 Start: 5561, Stop: 6481, Start Num: 32

Candidate Starts for DirtyBoi_7:

(Start: 32 @5561 has 135 MA's), (53, 5645), (68, 5732), (93, 5903), (105, 5966), (138, 6116), (145, 6146), (167, 6224), (181, 6281), (187, 6308), (197, 6350), (212, 6419), (214, 6425),

Gene: Dmitri_7 Start: 5561, Stop: 6481, Start Num: 32

Candidate Starts for Dmitri_7:

(Start: 32 @5561 has 135 MA's), (53, 5645), (68, 5732), (93, 5903), (105, 5966), (125, 6056), (138, 6116), (145, 6146), (167, 6224), (180, 6278), (181, 6281), (187, 6308), (197, 6350), (212, 6419), (214, 6425),

Gene: DobbysSock_6 Start: 4843, Stop: 5766, Start Num: 32

Candidate Starts for DobbysSock_6:

(Start: 32 @4843 has 135 MA's), (53, 4927), (62, 4975), (102, 5230), (105, 5248), (137, 5395), (138, 5398), (140, 5410), (159, 5482), (168, 5515), (187, 5590), (194, 5623), (208, 5689), (214, 5710), (222, 5755),

Gene: Doggs_6 Start: 5279, Stop: 6199, Start Num: 32

Candidate Starts for Doggs_6:

(10, 5132), (Start: 32 @5279 has 135 MA's), (81, 5555), (118, 5744), (124, 5765), (125, 5774), (129, 5786), (138, 5834), (141, 5849), (145, 5864), (162, 5933), (164, 5939), (179, 5990), (181, 5999), (187, 6026), (194, 6059), (203, 6092), (207, 6113), (208, 6122), (222, 6188),

Gene: Dolores_7 Start: 5345, Stop: 6268, Start Num: 32

Candidate Starts for Dolores_7:

(Start: 32 @5345 has 135 MA's), (53, 5429), (62, 5477), (102, 5732), (105, 5750), (137, 5897), (138, 5900), (140, 5912), (159, 5984), (168, 6017), (187, 6092), (194, 6125), (208, 6191), (214, 6212), (222, 6257),

Gene: Donovan_6 Start: 5299, Stop: 6243, Start Num: 32

Candidate Starts for Donovan_6:

(Start: 32 @5299 has 135 MA's), (45, 5332), (53, 5383), (75, 5545), (90, 5620), (95, 5647), (100, 5674), (103, 5689), (105, 5704), (126, 5800), (137, 5854), (141, 5872), (151, 5905), (165, 5977), (184, 6058), (191, 6085), (200, 6121), (203, 6136), (214, 6187), (216, 6193), (222, 6232),

Gene: Dorito_6 Start: 4843, Stop: 5766, Start Num: 32

Candidate Starts for Dorito_6:

(Start: 32 @4843 has 135 MA's), (53, 4927), (62, 4975), (102, 5230), (105, 5248), (137, 5395), (138, 5398), (140, 5410), (159, 5482), (168, 5515), (187, 5590), (194, 5623), (208, 5689), (212, 5704), (214, 5710), (222, 5755),

Gene: DrYang_12 Start: 9617, Stop: 10513, Start Num: 27

Candidate Starts for DrYang_12:

(Start: 27 @9617 has 17 MA's), (68, 9788), (72, 9842), (74, 9851), (76, 9878), (92, 9956), (107, 10040), (114, 10076), (126, 10130), (130, 10145), (154, 10244), (156, 10262), (214, 10463),

Gene: DumpsterDude_6 Start: 5417, Stop: 6349, Start Num: 37

Candidate Starts for DumpsterDude_6:

(18, 5339), (Start: 37 @5417 has 48 MA's), (42, 5432), (55, 5504), (75, 5654), (88, 5720), (91, 5732), (92, 5735), (97, 5771), (114, 5852), (129, 5924), (154, 6020), (174, 6107), (215, 6293),

Gene: Dynamo_6 Start: 5294, Stop: 6238, Start Num: 32

Candidate Starts for Dynamo_6:

(Start: 32 @5294 has 135 MA's), (46, 5339), (53, 5378), (75, 5540), (90, 5615), (95, 5642), (100, 5669), (103, 5684), (105, 5699), (122, 5774), (126, 5795), (141, 5867), (151, 5900), (154, 5909), (165, 5972), (184, 6053), (185, 6056), (191, 6080), (200, 6116), (203, 6131), (214, 6182), (216, 6188), (217, 6191), (222, 6227),

Gene: Easley_7 Start: 5345, Stop: 6268, Start Num: 32

Candidate Starts for Easley_7:

(Start: 32 @5345 has 135 MA's), (53, 5429), (62, 5477), (102, 5732), (105, 5750), (137, 5897), (140, 5912), (159, 5984), (168, 6017), (187, 6092), (194, 6125), (208, 6191), (214, 6212), (222, 6257),

Gene: EastWest_10 Start: 7632, Stop: 8534, Start Num: 28

Candidate Starts for EastWest_10:

(Start: 28 @7632 has 2 MA's), (52, 7722), (99, 8016), (112, 8076), (125, 8136), (135, 8193), (147, 8232), (176, 8328), (188, 8376), (214, 8472),

Gene: Ebert_6 Start: 4854, Stop: 5777, Start Num: 32

Candidate Starts for Ebert_6:

(Start: 32 @4854 has 135 MA's), (53, 4938), (62, 4986), (81, 5130), (100, 5229), (102, 5241), (138, 5409), (159, 5493), (164, 5514), (168, 5526), (179, 5565), (187, 5601), (194, 5634), (214, 5721),

Gene: EdgarPoe_12 Start: 9681, Stop: 10577, Start Num: 27

Candidate Starts for EdgarPoe_12:

(Start: 27 @9681 has 17 MA's), (68, 9852), (72, 9906), (76, 9942), (92, 10020), (107, 10104), (129, 10203), (155, 10323), (191, 10440), (193, 10455), (214, 10527),

Gene: EdnaMode_6 Start: 4854, Stop: 5777, Start Num: 32

Candidate Starts for EdnaMode_6:

(Start: 32 @4854 has 135 MA's), (53, 4938), (62, 4986), (81, 5130), (100, 5229), (102, 5241), (138, 5409), (159, 5493), (164, 5514), (168, 5526), (179, 5565), (187, 5601), (194, 5634),

Gene: Ein37_9 Start: 6586, Stop: 7542, Start Num: 32

Candidate Starts for Ein37_9:

(Start: 32 @6586 has 135 MA's), (49, 6646), (56, 6688), (57, 6691), (75, 6829), (84, 6871), (88, 6895), (91, 6907), (97, 6946), (98, 6949), (99, 6955), (109, 7003), (112, 7018), (121, 7063), (145, 7180), (150, 7195), (154, 7207), (156, 7225), (163, 7255), (173, 7297), (174, 7300), (176, 7312), (186, 7354), (195, 7396), (223, 7531),

Gene: Elesar_9 Start: 6600, Stop: 7511, Start Num: 32

Candidate Starts for Elesar_9:

(12, 6474), (20, 6552), (Start: 32 @6600 has 135 MA's), (89, 6918), (137, 7152), (145, 7185), (200, 7389), (214, 7455), (216, 7461),

Gene: Evanesce_9 Start: 6586, Stop: 7542, Start Num: 32

Candidate Starts for Evanesce_9:

(Start: 32 @6586 has 135 MA's), (49, 6646), (56, 6688), (57, 6691), (75, 6829), (84, 6871), (88, 6895), (91, 6907), (97, 6946), (98, 6949), (99, 6955), (109, 7003), (112, 7018), (121, 7063), (145, 7180), (150, 7195), (154, 7207), (156, 7225), (163, 7255), (173, 7297), (174, 7300), (176, 7312), (186, 7354), (195, 7396), (223, 7531),

Gene: Eyes_6 Start: 5207, Stop: 6124, Start Num: 35

Candidate Starts for Eyes_6:

(4, 4949), (Start: 35 @5207 has 7 MA's), (64, 5342), (68, 5375), (81, 5480), (127, 5705), (141, 5774), (145, 5789), (149, 5801), (150, 5804), (159, 5843), (162, 5858), (164, 5864), (187, 5951), (194, 5984), (203, 6017), (207, 6038), (208, 6047), (214, 6068),

Gene: Fairfaxidum_6 Start: 5209, Stop: 6138, Start Num: 37

Candidate Starts for Fairfaxidum_6:

(Start: 37 @5209 has 48 MA's), (42, 5224), (53, 5284), (55, 5296), (72, 5413), (85, 5500), (91, 5524), (112, 5635), (115, 5650), (144, 5782), (154, 5812), (174, 5899), (176, 5911), (223, 6130),

Gene: Fenry_6 Start: 5212, Stop: 6141, Start Num: 37

Candidate Starts for Fenry_6:

(Start: 37 @5212 has 48 MA's), (42, 5227), (47, 5251), (53, 5287), (57, 5311), (72, 5416), (75, 5449), (91, 5527), (96, 5554), (114, 5647), (115, 5653), (144, 5785), (154, 5815), (157, 5839), (161, 5854), (174, 5902), (176, 5914), (223, 6133),

Gene: Finkle_6 Start: 4987, Stop: 5913, Start Num: 32

Candidate Starts for Finkle_6:

(Start: 32 @4987 has 135 MA's), (64, 5125), (84, 5275), (99, 5359), (101, 5371), (126, 5485), (136, 5536), (143, 5566), (187, 5737), (203, 5806), (222, 5902),

Gene: FirstPlacePfu_6 Start: 5294, Stop: 6238, Start Num: 32

Candidate Starts for FirstPlacePfu_6:

(Start: 32 @5294 has 135 MA's), (46, 5339), (53, 5378), (75, 5540), (90, 5615), (95, 5642), (100, 5669), (103, 5684), (105, 5699), (122, 5774), (126, 5795), (141, 5867), (151, 5900), (154, 5909), (165, 5972), (184, 6053), (185, 6056), (191, 6080), (200, 6116), (203, 6131), (214, 6182), (216, 6188), (217, 6191), (222, 6227),

Gene: Fishburne_6 Start: 5294, Stop: 6238, Start Num: 32

Candidate Starts for Fishburne_6:

(Start: 32 @5294 has 135 MA's), (46, 5339), (53, 5378), (75, 5540), (90, 5615), (95, 5642), (100, 5669), (103, 5684), (105, 5699), (122, 5774), (126, 5795), (141, 5867), (151, 5900), (154, 5909), (165, 5972), (184, 6053), (185, 6056), (191, 6080), (200, 6116), (203, 6131), (214, 6182), (216, 6188), (217, 6191), (222, 6227),

Gene: Forge_9 Start: 6586, Stop: 7542, Start Num: 32

Candidate Starts for Forge_9:

(Start: 32 @6586 has 135 MA's), (49, 6646), (56, 6688), (57, 6691), (75, 6829), (84, 6871), (88, 6895), (91, 6907), (97, 6946), (98, 6949), (99, 6955), (109, 7003), (112, 7018), (121, 7063), (145, 7180), (150, 7195), (154, 7207), (156, 7225), (163, 7255), (173, 7297), (174, 7300), (176, 7312), (186, 7354), (195, 7396), (223, 7531),

Gene: Francois_10 Start: 6846, Stop: 7778, Start Num: 37

Candidate Starts for Francois_10:

(Start: 37 @6846 has 48 MA's), (42, 6861), (52, 6918), (53, 6921), (55, 6933), (74, 7059), (75, 7083), (81, 7113), (88, 7149), (91, 7161), (97, 7200), (114, 7281), (154, 7449), (161, 7488), (174, 7536), (183, 7581), (215, 7722), (223, 7767),

Gene: Franzy_8 Start: 7215, Stop: 8108, Start Num: 29

Candidate Starts for Franzy_8:

(Start: 29 @7215 has 13 MA's), (68, 7386), (75, 7470), (76, 7473), (81, 7500), (99, 7596), (114, 7665), (131, 7734), (135, 7770), (176, 7905), (188, 7953), (201, 7989), (208, 8028),

Gene: Frokostdame_6 Start: 5112, Stop: 6041, Start Num: 32

Candidate Starts for Frokostdame_6:

(Start: 32 @5112 has 135 MA's), (42, 5133), (50, 5175), (60, 5232), (68, 5280), (75, 5355), (78, 5376), (81, 5385), (86, 5415), (91, 5433), (96, 5460), (97, 5472), (101, 5493), (112, 5544), (120, 5580), (140, 5673), (144, 5688), (154, 5718), (173, 5802), (176, 5817), (184, 5853), (188, 5871), (214, 5988), (217, 5997),

Gene: GEazy_6 Start: 5209, Stop: 6126, Start Num: 35

Candidate Starts for GEazy_6:

(1, 4852), (7, 5053), (16, 5125), (17, 5128), (Start: 35 @5209 has 7 MA's), (64, 5344), (68, 5377), (81, 5482), (127, 5707), (140, 5773), (141, 5776), (145, 5791), (149, 5803), (150, 5806), (153, 5815), (159, 5845), (162, 5860), (164, 5866), (187, 5953), (203, 6019), (207, 6040), (208, 6049), (214, 6070),

Gene: GMA4_7 Start: 6326, Stop: 7234, Start Num: 23

Candidate Starts for GMA4_7:

(Start: 23 @6326 has 3 MA's), (49, 6395), (112, 6776), (118, 6806), (146, 6926), (161, 6980), (175, 7028), (179, 7046), (217, 7187),

Gene: Gambino_6 Start: 5041, Stop: 5970, Start Num: 32

Candidate Starts for Gambino_6:

(Start: 32 @5041 has 135 MA's), (42, 5062), (50, 5104), (60, 5161), (68, 5209), (75, 5284), (81, 5314), (86, 5344), (91, 5362), (96, 5389), (97, 5401), (101, 5422), (112, 5473), (120, 5509), (140, 5602), (144, 5617), (154, 5647), (176, 5746), (184, 5782), (188, 5800), (214, 5917), (217, 5926),

Gene: Gancho_8 Start: 6286, Stop: 7242, Start Num: 32

Candidate Starts for Gancho_8:

(Start: 32 @6286 has 135 MA's), (49, 6346), (56, 6388), (57, 6391), (75, 6529), (84, 6571), (88, 6595), (91, 6607), (97, 6646), (98, 6649), (99, 6655), (109, 6703), (112, 6718), (121, 6763), (145, 6880), (150, 6895), (154, 6907), (156, 6925), (173, 6997), (174, 7000), (176, 7012), (186, 7054), (195, 7096), (223, 7231),

Gene: GemG_6 Start: 4854, Stop: 5777, Start Num: 32

Candidate Starts for GemG_6:

(Start: 32 @4854 has 135 MA's), (53, 4938), (62, 4986), (81, 5130), (100, 5229), (102, 5241), (138, 5409), (159, 5493), (164, 5514), (168, 5526), (179, 5565), (187, 5601), (194, 5634), (214, 5721),

Gene: Giles_9 Start: 6586, Stop: 7542, Start Num: 32

Candidate Starts for Giles_9:

(Start: 32 @6586 has 135 MA's), (49, 6646), (56, 6688), (57, 6691), (75, 6829), (84, 6871), (88, 6895), (91, 6907), (97, 6946), (98, 6949), (99, 6955), (109, 7003), (112, 7018), (121, 7063), (145, 7180), (150, 7195), (154, 7207), (156, 7225), (163, 7255), (173, 7297), (174, 7300), (176, 7312), (186, 7354), (195, 7396), (223, 7531),

Gene: Gizermo_6 Start: 4854, Stop: 5777, Start Num: 32

Candidate Starts for Gizermo_6:

(Start: 32 @4854 has 135 MA's), (53, 4938), (62, 4986), (81, 5130), (100, 5229), (102, 5241), (138, 5409), (159, 5493), (164, 5514), (168, 5526), (179, 5565), (187, 5601), (194, 5634), (214, 5721),

Gene: Glaske_6 Start: 5281, Stop: 6225, Start Num: 32

Candidate Starts for Glaske_6:

(Start: 32 @5281 has 135 MA's), (46, 5326), (53, 5365), (75, 5527), (90, 5602), (95, 5629), (100, 5656), (103, 5671), (105, 5686), (122, 5761), (126, 5782), (141, 5854), (151, 5887), (154, 5896), (165, 5959), (184, 6040), (185, 6043), (191, 6067), (200, 6103), (203, 6118), (214, 6169), (216, 6175), (217, 6178), (222, 6214),

Gene: GrandSlam_10 Start: 6877, Stop: 7809, Start Num: 37

Candidate Starts for GrandSlam_10:

(Start: 37 @6877 has 48 MA's), (42, 6892), (52, 6949), (53, 6952), (55, 6964), (75, 7114), (88, 7180), (91, 7192), (97, 7231), (114, 7312), (154, 7480), (161, 7519), (173, 7564), (183, 7612), (215, 7753), (223, 7798),

Gene: Gravaillia_9 Start: 6319, Stop: 7275, Start Num: 32

Candidate Starts for Gravaillia_9:

(Start: 32 @6319 has 135 MA's), (49, 6379), (56, 6421), (57, 6424), (75, 6562), (84, 6604), (88, 6628), (91, 6640), (97, 6679), (98, 6682), (99, 6688), (109, 6736), (112, 6751), (121, 6796), (145, 6913), (150, 6928), (154, 6940), (156, 6958), (173, 7030), (174, 7033), (176, 7045), (186, 7087), (195, 7129), (223, 7264),

Gene: GravityBall_9 Start: 7550, Stop: 8437, Start Num: 30

Candidate Starts for GravityBall_9:

(Start: 30 @7550 has 19 MA's), (68, 7718), (81, 7832), (88, 7868), (99, 7928), (114, 7997), (135, 8102), (146, 8138), (170, 8219), (176, 8237), (188, 8285), (208, 8360), (214, 8381),

Gene: GreaseLightnin_6 Start: 5294, Stop: 6238, Start Num: 32

Candidate Starts for GreaseLightnin_6:

(Start: 32 @5294 has 135 MA's), (46, 5339), (53, 5378), (75, 5540), (90, 5615), (95, 5642), (100, 5669), (103, 5684), (105, 5699), (122, 5774), (126, 5795), (141, 5867), (151, 5900), (154, 5909), (165, 5972), (184, 6053), (185, 6056), (191, 6080), (200, 6116), (203, 6131), (214, 6182), (216, 6188), (217, 6191), (222, 6227),

Gene: Grekaycon_9 Start: 7577, Stop: 8464, Start Num: 30

Candidate Starts for Grekaycon_9:

(Start: 30 @7577 has 19 MA's), (81, 7859), (88, 7895), (95, 7931), (114, 8024), (116, 8039), (131, 8093), (133, 8108), (145, 8162), (176, 8264), (188, 8312), (214, 8408),

Gene: Guacamole_6 Start: 5213, Stop: 6142, Start Num: 37

Candidate Starts for Guacamole_6:

(Start: 37 @5213 has 48 MA's), (42, 5228), (47, 5252), (53, 5288), (57, 5312), (72, 5417), (75, 5450), (91, 5528), (96, 5555), (114, 5648), (115, 5654), (144, 5786), (154, 5816), (157, 5840), (161, 5855), (174, 5903), (176, 5915), (223, 6134),

Gene: Gusanita_8 Start: 6480, Stop: 7409, Start Num: 31

Candidate Starts for Gusanita_8:

(Start: 31 @6480 has 5 MA's), (74, 6702), (88, 6792), (96, 6831), (100, 6855), (145, 7077), (182, 7209), (187, 7233), (212, 7347),

Gene: HH92_9 Start: 6586, Stop: 7542, Start Num: 32

Candidate Starts for HH92_9:

(Start: 32 @6586 has 135 MA's), (49, 6646), (56, 6688), (57, 6691), (75, 6829), (84, 6871), (88, 6895), (91, 6907), (97, 6946), (98, 6949), (99, 6955), (109, 7003), (112, 7018), (121, 7063), (145, 7180), (150, 7195), (154, 7207), (156, 7225), (163, 7255), (173, 7297), (174, 7300), (176, 7312), (186, 7354), (195, 7396), (223, 7531),

Gene: HUHilltop_6 Start: 5294, Stop: 6238, Start Num: 32

Candidate Starts for HUHilltop_6:

(Start: 32 @5294 has 135 MA's), (46, 5339), (53, 5378), (75, 5540), (90, 5615), (95, 5642), (100, 5669), (103, 5684), (105, 5699), (122, 5774), (126, 5795), (141, 5867), (151, 5900), (154, 5909), (165, 5972), (184, 6053), (185, 6056), (191, 6080), (200, 6116), (203, 6131), (214, 6182), (216, 6188), (217, 6191), (222, 6227),

Gene: Hadrien_9 Start: 6586, Stop: 7542, Start Num: 32

Candidate Starts for Hadrien_9:

(Start: 32 @6586 has 135 MA's), (49, 6646), (56, 6688), (57, 6691), (75, 6829), (84, 6871), (88, 6895), (91, 6907), (97, 6946), (98, 6949), (99, 6955), (109, 7003), (112, 7018), (121, 7063), (145, 7180), (150, 7195), (154, 7207), (156, 7225), (163, 7255), (173, 7297), (174, 7300), (176, 7312), (186, 7354), (195, 7396), (223, 7531),

Gene: Hail_9 Start: 6586, Stop: 7542, Start Num: 32

Candidate Starts for Hail_9:

(Start: 32 @6586 has 135 MA's), (49, 6646), (56, 6688), (57, 6691), (75, 6829), (84, 6871), (88, 6895), (91, 6907), (97, 6946), (98, 6949), (99, 6955), (109, 7003), (112, 7018), (121, 7063), (145, 7180), (150, 7195), (154, 7207), (156, 7225), (163, 7255), (173, 7297), (174, 7300), (176, 7312), (186, 7354), (195, 7396), (223, 7531),

Gene: Haley23_6 Start: 4854, Stop: 5777, Start Num: 32

Candidate Starts for Haley23_6:

(Start: 32 @4854 has 135 MA's), (53, 4938), (62, 4986), (81, 5130), (100, 5229), (102, 5241), (138, 5409), (159, 5493), (164, 5514), (168, 5526), (179, 5565), (187, 5601), (194, 5634), (214, 5721),

Gene: Hamood_10 Start: 6877, Stop: 7809, Start Num: 37

Candidate Starts for Hamood_10:

(Start: 37 @6877 has 48 MA's), (42, 6892), (52, 6949), (53, 6952), (55, 6964), (75, 7114), (88, 7180), (91, 7192), (97, 7231), (114, 7312), (154, 7480), (161, 7519), (173, 7564), (183, 7612), (215, 7753), (223, 7798),

Gene: HannahD_6 Start: 5209, Stop: 6126, Start Num: 35

Candidate Starts for HannahD_6:

(1, 4852), (7, 5053), (16, 5125), (17, 5128), (Start: 35 @5209 has 7 MA's), (64, 5344), (68, 5377), (81, 5482), (127, 5707), (140, 5773), (141, 5776), (145, 5791), (149, 5803), (150, 5806), (153, 5815), (159, 5845), (162, 5860), (164, 5866), (187, 5953), (203, 6019), (207, 6040), (208, 6049), (214, 6070),

Gene: Hedwig_7 Start: 5561, Stop: 6481, Start Num: 32

Candidate Starts for Hedwig_7:

(Start: 32 @5561 has 135 MA's), (53, 5645), (93, 5903), (105, 5966), (138, 6116), (145, 6146), (167, 6224), (181, 6281), (187, 6308), (197, 6350), (212, 6419), (214, 6425),

Gene: Henoccus_16 Start: 11667, Stop: 12635, Start Num: 38

Candidate Starts for Henoccus_16:

(Start: 38 @11667 has 18 MA's), (Start: 39 @11673 has 1 MA's), (43, 11691), (56, 11766), (60, 11784), (61, 11787), (73, 11877), (74, 11883), (79, 11931), (84, 11949), (96, 12012), (97, 12024), (98, 12027), (105, 12066), (149, 12276), (153, 12288), (157, 12315), (161, 12333), (171, 12381), (177, 12405), (209, 12540), (212, 12549),

Gene: Hirko_9 Start: 8724, Stop: 9608, Start Num: 29

Candidate Starts for Hirko_9:

(Start: 29 @8724 has 13 MA's), (49, 8787), (72, 8940), (75, 8973), (112, 9159), (141, 9291), (191, 9465), (203, 9501),

Gene: Hitter_6 Start: 5209, Stop: 6138, Start Num: 37

Candidate Starts for Hitter_6:

(Start: 37 @5209 has 48 MA's), (42, 5224), (47, 5248), (53, 5284), (57, 5308), (75, 5446), (91, 5524), (96, 5551), (114, 5644), (115, 5650), (144, 5782), (154, 5812), (157, 5836), (161, 5851), (174, 5899), (176, 5911), (223, 6130),

Gene: Hortense_6 Start: 4904, Stop: 5836, Start Num: 32

Candidate Starts for Hortense_6:

(Start: 32 @4904 has 135 MA's), (42, 4928), (49, 4967), (50, 4970), (57, 5012), (68, 5075), (86, 5210), (91, 5228), (96, 5255), (112, 5339), (114, 5348), (126, 5411), (140, 5468), (145, 5486), (154, 5513), (157, 5537), (161, 5552), (168, 5582), (176, 5612), (185, 5651), (214, 5783), (217, 5792),

Gene: Howe_6 Start: 4904, Stop: 5836, Start Num: 32

Candidate Starts for Howe_6:

(Start: 32 @4904 has 135 MA's), (42, 4928), (49, 4967), (50, 4970), (57, 5012), (68, 5075), (86, 5210), (91, 5228), (96, 5255), (112, 5339), (114, 5348), (126, 5411), (140, 5468), (145, 5486), (154, 5513), (157, 5537), (161, 5552), (168, 5582), (176, 5612), (185, 5651), (214, 5783), (217, 5792),

Gene: HumptyDumpty_12 Start: 9680, Stop: 10576, Start Num: 27

Candidate Starts for HumptyDumpty_12:

(Start: 27 @9680 has 17 MA's), (68, 9851), (72, 9905), (92, 10019), (107, 10103), (129, 10202), (155, 10322), (191, 10439), (193, 10454), (214, 10526),

Gene: Intolerant_15 Start: 11652, Stop: 12632, Start Num: 38

Candidate Starts for Intolerant_15:

(Start: 38 @11652 has 18 MA's), (Start: 39 @11658 has 1 MA's), (43, 11676), (56, 11751), (60, 11769), (61, 11772), (73, 11862), (74, 11868), (79, 11916), (84, 11934), (96, 11997), (97, 12009), (98, 12012), (105, 12051), (148, 12267), (149, 12270), (157, 12309), (209, 12534), (212, 12543), (221, 12582),

Gene: JCole_6 Start: 4854, Stop: 5777, Start Num: 32

Candidate Starts for JCole_6:

(Start: 32 @4854 has 135 MA's), (53, 4938), (62, 4986), (81, 5130), (100, 5229), (102, 5241), (138, 5409), (159, 5493), (164, 5514), (168, 5526), (179, 5565), (187, 5601), (194, 5634), (214, 5721),

Gene: JKerns_9 Start: 7607, Stop: 8494, Start Num: 30

Candidate Starts for JKerns_9:

(Start: 30 @7607 has 19 MA's), (81, 7889), (88, 7925), (95, 7961), (99, 7985), (114, 8054), (116, 8069), (131, 8123), (133, 8138), (145, 8192), (176, 8294), (188, 8342), (214, 8438),

Gene: JaNo_12 Start: 9680, Stop: 10576, Start Num: 27

Candidate Starts for JaNo_12:

(Start: 27 @9680 has 17 MA's), (68, 9851), (72, 9905), (92, 10019), (107, 10103), (129, 10202), (155, 10322), (191, 10439), (193, 10454), (214, 10526),

Gene: JackieB_15 Start: 11522, Stop: 12490, Start Num: 38

Candidate Starts for JackieB_15:

(Start: 38 @11522 has 18 MA's), (Start: 39 @11528 has 1 MA's), (43, 11546), (56, 11621), (60, 11639), (61, 11642), (73, 11732), (74, 11738), (79, 11786), (84, 11804), (96, 11867), (97, 11879), (98, 11882), (105, 11921), (149, 12131), (153, 12143), (157, 12170), (161, 12188), (171, 12236), (177,

12260), (209, 12395), (212, 12404),

Gene: Jalammah_6 Start: 5209, Stop: 6138, Start Num: 37

Candidate Starts for Jalammah_6:

(Start: 37 @5209 has 48 MA's), (42, 5224), (47, 5248), (53, 5284), (57, 5308), (75, 5446), (91, 5524), (96, 5551), (114, 5644), (115, 5650), (144, 5782), (154, 5812), (157, 5836), (161, 5851), (174, 5899), (176, 5911), (223, 6130),

Gene: JasperJr_6 Start: 5213, Stop: 6142, Start Num: 37

Candidate Starts for JasperJr_6:

(Start: 37 @5213 has 48 MA's), (42, 5228), (47, 5252), (53, 5288), (57, 5312), (72, 5417), (75, 5450), (91, 5528), (96, 5555), (114, 5648), (115, 5654), (144, 5786), (154, 5816), (157, 5840), (161, 5855), (174, 5903), (176, 5915), (223, 6134),

Gene: Jawnski_8 Start: 7212, Stop: 8105, Start Num: 29

Candidate Starts for Jawnski_8:

(Start: 29 @7212 has 13 MA's), (75, 7467), (81, 7497), (95, 7569), (131, 7731), (135, 7767), (176, 7902), (188, 7950), (203, 7995), (208, 8025), (214, 8046),

Gene: JayCookie_12 Start: 9683, Stop: 10579, Start Num: 27

Candidate Starts for JayCookie_12:

(Start: 27 @9683 has 17 MA's), (68, 9854), (74, 9917), (92, 10022), (107, 10106), (129, 10205), (155, 10325), (172, 10373), (191, 10442), (193, 10457), (214, 10529),

Gene: Jebeks_6 Start: 5299, Stop: 6243, Start Num: 32

Candidate Starts for Jebeks_6:

(Start: 32 @5299 has 135 MA's), (45, 5332), (53, 5383), (75, 5545), (90, 5620), (95, 5647), (96, 5650), (100, 5674), (103, 5689), (105, 5704), (126, 5800), (137, 5854), (141, 5872), (151, 5905), (165, 5977), (184, 6058), (191, 6085), (200, 6121), (203, 6136), (214, 6187), (216, 6193), (222, 6232),

Gene: Jinkies_10 Start: 8046, Stop: 8930, Start Num: 26

Candidate Starts for Jinkies_10:

(Start: 26 @8046 has 3 MA's), (63, 8178), (72, 8262), (75, 8295), (95, 8397), (176, 8730), (201, 8814), (214, 8874),

Gene: Jordan_9 Start: 7577, Stop: 8464, Start Num: 30

Candidate Starts for Jordan_9:

(Start: 30 @7577 has 19 MA's), (81, 7859), (95, 7931), (99, 7955), (114, 8024), (116, 8039), (131, 8093), (133, 8108), (145, 8162), (176, 8264), (188, 8312), (214, 8408),

Gene: JuJu_6 Start: 5054, Stop: 5983, Start Num: 32

Candidate Starts for JuJu_6:

(Start: 32 @5054 has 135 MA's), (42, 5075), (50, 5117), (60, 5174), (68, 5222), (75, 5297), (81, 5327), (86, 5357), (91, 5375), (96, 5402), (97, 5414), (101, 5435), (112, 5486), (140, 5615), (144, 5630), (154, 5660), (173, 5744), (176, 5759), (184, 5795), (188, 5813), (214, 5930), (217, 5939),

Gene: Juicebox_9 Start: 6962, Stop: 7873, Start Num: 25

Candidate Starts for Juicebox_9:

(Start: 25 @6962 has 5 MA's), (34, 6977), (48, 7028), (49, 7031), (75, 7217), (80, 7244), (99, 7343), (101, 7355), (113, 7409), (168, 7643), (185, 7706), (188, 7721), (192, 7733), (205, 7781), (218, 7838), (219, 7844),

Gene: Jung_6 Start: 5281, Stop: 6225, Start Num: 32

Candidate Starts for Jung_6:

(Start: 32 @5281 has 135 MA's), (46, 5326), (53, 5365), (75, 5527), (90, 5602), (95, 5629), (96, 5632), (100, 5656), (103, 5671), (105, 5686), (122, 5761), (126, 5782), (141, 5854), (151, 5887), (154, 5896), (165, 5959), (184, 6040), (185, 6043), (191, 6067), (200, 6103), (203, 6118), (216, 6175), (217, 6178), (222, 6214),

Gene: Juniormint_6 Start: 5302, Stop: 6246, Start Num: 32

Candidate Starts for Juniormint_6:

(Start: 32 @5302 has 135 MA's), (45, 5335), (53, 5386), (75, 5548), (90, 5623), (95, 5650), (100, 5677), (103, 5692), (105, 5707), (126, 5803), (137, 5857), (141, 5875), (151, 5908), (165, 5980), (184, 6061), (191, 6088), (200, 6124), (203, 6139), (214, 6190), (216, 6196), (222, 6235),

Gene: JustASigh_6 Start: 5596, Stop: 6537, Start Num: 35

Candidate Starts for JustASigh_6:

(Start: 35 @5596 has 7 MA's), (42, 5614), (51, 5668), (52, 5671), (55, 5686), (57, 5698), (75, 5836), (77, 5851), (78, 5857), (81, 5866), (86, 5896), (91, 5914), (97, 5953), (112, 6025), (114, 6034), (134, 6133), (166, 6265), (174, 6295), (209, 6463), (215, 6481), (223, 6526),

Gene: KBurrousTX_12 Start: 9457, Stop: 10353, Start Num: 28

Candidate Starts for KBurrousTX_12:

(Start: 28 @9457 has 2 MA's), (68, 9628), (74, 9691), (83, 9751), (96, 9820), (107, 9880), (126, 9970), (129, 9979), (154, 10084), (191, 10216), (214, 10303),

Gene: Kabreeze_12 Start: 9680, Stop: 10576, Start Num: 27

Candidate Starts for Kabreeze_12:

(Start: 27 @9680 has 17 MA's), (68, 9851), (72, 9905), (92, 10019), (107, 10103), (129, 10202), (155, 10322), (191, 10439), (193, 10454), (214, 10526),

Gene: KappaFarmDelta_6 Start: 5194, Stop: 6126, Start Num: 37

Candidate Starts for KappaFarmDelta_6:

(Start: 37 @5194 has 48 MA's), (42, 5209), (47, 5233), (53, 5269), (57, 5293), (72, 5398), (91, 5509), (96, 5536), (114, 5629), (143, 5764), (154, 5797), (157, 5821), (174, 5884), (176, 5896), (223, 6115),

Gene: Kari_6 Start: 5294, Stop: 6238, Start Num: 32

Candidate Starts for Kari_6:

(Start: 32 @5294 has 135 MA's), (46, 5339), (53, 5378), (75, 5540), (90, 5615), (95, 5642), (100, 5669), (103, 5684), (105, 5699), (122, 5774), (126, 5795), (141, 5867), (151, 5900), (154, 5909), (165, 5972), (184, 6053), (185, 6056), (191, 6080), (200, 6116), (203, 6131), (214, 6182), (216, 6188), (217, 6191), (222, 6227),

Gene: Kiko_7 Start: 5416, Stop: 6342, Start Num: 32

Candidate Starts for Kiko_7:

(Start: 32 @5416 has 135 MA's), (53, 5500), (62, 5548), (93, 5758), (94, 5761), (101, 5800), (105, 5821), (111, 5848), (123, 5905), (126, 5920), (144, 6004), (145, 6007), (187, 6169),

Gene: KilKor_6 Start: 5281, Stop: 6225, Start Num: 32

Candidate Starts for KilKor_6:

(Start: 32 @5281 has 135 MA's), (46, 5326), (53, 5365), (75, 5527), (90, 5602), (95, 5629), (100, 5656), (103, 5671), (105, 5686), (122, 5761), (126, 5782), (141, 5854), (151, 5887), (154, 5896), (165, 5959), (184, 6040), (185, 6043), (191, 6067), (200, 6103), (203, 6118), (214, 6169), (216, 6175), (217, 6178), (222, 6214),

Gene: Kinbote_9 Start: 6586, Stop: 7542, Start Num: 32

Candidate Starts for Kinbote_9:

(Start: 32 @6586 has 135 MA's), (49, 6646), (56, 6688), (57, 6691), (75, 6829), (84, 6871), (88, 6895), (91, 6907), (97, 6946), (98, 6949), (99, 6955), (109, 7003), (112, 7018), (121, 7063), (145, 7180), (150, 7195), (154, 7207), (156, 7225), (163, 7255), (173, 7297), (174, 7300), (176, 7312), (186, 7354), (195, 7396), (223, 7531),

Gene: King2_8 Start: 7217, Stop: 8110, Start Num: 29

Candidate Starts for King2_8:

(Start: 29 @7217 has 13 MA's), (68, 7388), (75, 7472), (76, 7475), (81, 7502), (99, 7598), (114, 7667), (135, 7772), (176, 7907), (188, 7955), (201, 7991), (208, 8030),

Gene: Klevey_8 Start: 7102, Stop: 7989, Start Num: 29

Candidate Starts for Klevey_8:

(Start: 29 @7102 has 13 MA's), (63, 7234), (68, 7267), (75, 7351), (83, 7387), (88, 7417), (98, 7471), (116, 7561), (123, 7582), (135, 7651), (150, 7699), (201, 7870), (208, 7909),

Gene: Ksquared_6 Start: 5294, Stop: 6238, Start Num: 32

Candidate Starts for Ksquared_6:

(Start: 32 @5294 has 135 MA's), (46, 5339), (53, 5378), (75, 5540), (90, 5615), (95, 5642), (96, 5645), (100, 5669), (103, 5684), (105, 5699), (122, 5774), (126, 5795), (141, 5867), (151, 5900), (154, 5909), (165, 5972), (184, 6053), (185, 6056), (191, 6080), (200, 6116), (203, 6131), (214, 6182), (216, 6188), (217, 6191), (222, 6227),

Gene: Lamberg_6 Start: 4854, Stop: 5777, Start Num: 32

Candidate Starts for Lamberg_6:

(Start: 32 @4854 has 135 MA's), (53, 4938), (62, 4986), (81, 5130), (100, 5229), (102, 5241), (138, 5409), (159, 5493), (164, 5514), (168, 5526), (179, 5565), (187, 5601), (194, 5634),

Gene: Langerak_6 Start: 5299, Stop: 6243, Start Num: 32

Candidate Starts for Langerak_6:

(Start: 32 @5299 has 135 MA's), (45, 5332), (53, 5383), (75, 5545), (90, 5620), (95, 5647), (100, 5674), (103, 5689), (105, 5704), (126, 5800), (137, 5854), (141, 5872), (151, 5905), (165, 5977), (184, 6058), (191, 6085), (200, 6121), (203, 6136), (214, 6187), (216, 6193), (222, 6232),

Gene: LazerLemon_15 Start: 11860, Stop: 12828, Start Num: 38

Candidate Starts for LazerLemon_15:

(Start: 38 @11860 has 18 MA's), (Start: 39 @11866 has 1 MA's), (43, 11884), (56, 11959), (60, 11977), (61, 11980), (73, 12070), (74, 12076), (79, 12124), (84, 12142), (96, 12205), (97, 12217), (98, 12220), (105, 12259), (149, 12469), (153, 12481), (157, 12508), (165, 12547), (171, 12574), (177, 12598), (209, 12733), (212, 12742),

Gene: Lederberg_6 Start: 5118, Stop: 6050, Start Num: 38

Candidate Starts for Lederberg_6:

(22, 5085), (Start: 38 @5118 has 18 MA's), (75, 5355), (79, 5379), (85, 5409), (88, 5421), (95, 5457), (96, 5460), (101, 5493), (138, 5664), (144, 5691), (155, 5736), (168, 5790), (180, 5838), (196, 5910), (204, 5946), (205, 5958), (206, 5961), (210, 5982), (219, 6021), (222, 6039),

Gene: LeeroyJ_9 Start: 7549, Stop: 8436, Start Num: 30

Candidate Starts for LeeroyJ_9:

(Start: 30 @7549 has 19 MA's), (68, 7717), (81, 7831), (88, 7867), (99, 7927), (114, 7996), (135, 8101), (146, 8137), (170, 8218), (176, 8236), (188, 8284), (208, 8359), (214, 8380),

Gene: LilHazelnut_9 Start: 6586, Stop: 7542, Start Num: 32

Candidate Starts for LilHazelnut_9:

(Start: 32 @6586 has 135 MA's), (49, 6646), (56, 6688), (57, 6691), (75, 6829), (84, 6871), (88, 6895), (91, 6907), (97, 6946), (98, 6949), (99, 6955), (109, 7003), (112, 7018), (121, 7063), (145, 7180), (150, 7195), (154, 7207), (156, 7225), (163, 7255), (173, 7297), (174, 7300), (176, 7312), (186, 7354), (195, 7396), (223, 7531),

Gene: Lilmac1015_8 Start: 7095, Stop: 7982, Start Num: 29

Candidate Starts for Lilmac1015_8:

(Start: 29 @7095 has 13 MA's), (63, 7227), (68, 7260), (75, 7344), (83, 7380), (88, 7410), (98, 7464), (123, 7575), (150, 7692), (179, 7791), (201, 7863), (202, 7869), (208, 7902),

Gene: Linus_12 Start: 9680, Stop: 10576, Start Num: 27

Candidate Starts for Linus_12:

(Start: 27 @9680 has 17 MA's), (68, 9851), (74, 9914), (92, 10019), (107, 10103), (129, 10202), (155, 10322), (172, 10370), (191, 10439), (193, 10454), (214, 10526),

Gene: LordFarquaad_6 Start: 4854, Stop: 5777, Start Num: 32

Candidate Starts for LordFarquaad_6:

(Start: 32 @4854 has 135 MA's), (53, 4938), (62, 4986), (81, 5130), (100, 5229), (102, 5241), (138, 5409), (159, 5493), (164, 5514), (168, 5526), (179, 5565), (187, 5601), (194, 5634), (214, 5721),

Gene: Luke_9 Start: 6586, Stop: 7542, Start Num: 32

Candidate Starts for Luke_9:

(Start: 32 @6586 has 135 MA's), (49, 6646), (56, 6688), (57, 6691), (75, 6829), (84, 6871), (88, 6895), (91, 6907), (97, 6946), (98, 6949), (99, 6955), (109, 7003), (112, 7018), (121, 7063), (145, 7180), (150, 7195), (154, 7207), (156, 7225), (163, 7255), (173, 7297), (174, 7300), (176, 7312), (186, 7354), (195, 7396), (223, 7531),

Gene: Luna22_9 Start: 6586, Stop: 7542, Start Num: 32

Candidate Starts for Luna22_9:

(Start: 32 @6586 has 135 MA's), (49, 6646), (56, 6688), (57, 6691), (75, 6829), (84, 6871), (88, 6895), (91, 6907), (97, 6946), (98, 6949), (99, 6955), (109, 7003), (112, 7018), (121, 7063), (145, 7180), (150, 7195), (154, 7207), (156, 7225), (163, 7255), (173, 7297), (174, 7300), (176, 7312), (186, 7354), (195, 7396), (223, 7531),

Gene: Lymara_12 Start: 9669, Stop: 10565, Start Num: 27

Candidate Starts for Lymara_12:

(Start: 27 @9669 has 17 MA's), (68, 9840), (74, 9903), (92, 10008), (107, 10092), (129, 10191), (154, 10296), (191, 10428), (193, 10443), (214, 10515),

Gene: Lysidious_6 Start: 5209, Stop: 6138, Start Num: 37

Candidate Starts for Lysidious_6:

(Start: 37 @5209 has 48 MA's), (42, 5224), (47, 5248), (53, 5284), (57, 5308), (75, 5446), (91, 5524), (96, 5551), (114, 5644), (115, 5650), (144, 5782), (154, 5812), (157, 5836), (161, 5851), (174, 5899), (176, 5911), (223, 6130),

Gene: MagicMan_6 Start: 5427, Stop: 6338, Start Num: 23

Candidate Starts for MagicMan_6:

(12, 5319), (Start: 23 @5427 has 3 MA's), (33, 5445), (75, 5694), (94, 5793), (102, 5835), (104, 5844), (117, 5904), (211, 6270), (215, 6282),

Gene: Majeke_6 Start: 5299, Stop: 6243, Start Num: 32

Candidate Starts for Majeke_6:

(Start: 32 @5299 has 135 MA's), (45, 5332), (53, 5383), (75, 5545), (90, 5620), (95, 5647), (96, 5650), (100, 5674), (103, 5689), (105, 5704), (126, 5800), (137, 5854), (141, 5872), (151, 5905), (165, 5977), (184, 6058), (191, 6085), (200, 6121), (203, 6136), (214, 6187), (216, 6193), (222, 6232),

Gene: Malachai_6 Start: 5212, Stop: 6141, Start Num: 37

Candidate Starts for Malachai_6:

(Start: 37 @5212 has 48 MA's), (42, 5227), (47, 5251), (53, 5287), (57, 5311), (72, 5416), (75, 5449), (91, 5527), (96, 5554), (114, 5647), (115, 5653), (144, 5785), (154, 5815), (157, 5839), (161, 5854), (174, 5902), (176, 5914), (223, 6133),

Gene: MalagasyRose_13 Start: 8001, Stop: 8906, Start Num: 26

Candidate Starts for MalagasyRose_13:

(Start: 26 @8001 has 3 MA's), (40, 8019), (49, 8064), (65, 8148), (66, 8157), (68, 8172), (72, 8229), (75, 8262), (135, 8565), (146, 8598), (150, 8610), (168, 8676), (185, 8739), (189, 8757), (212, 8844), (217, 8859),

Gene: Malibo_6 Start: 5429, Stop: 6361, Start Num: 37

Candidate Starts for Malibo_6:

(18, 5345), (Start: 37 @5429 has 48 MA's), (42, 5444), (55, 5516), (75, 5666), (88, 5732), (91, 5744), (92, 5747), (97, 5783), (114, 5864), (129, 5936), (154, 6032), (174, 6119), (176, 6131), (215, 6305),

Gene: Malithi_6 Start: 5294, Stop: 6238, Start Num: 32

Candidate Starts for Malithi_6:

(Start: 32 @5294 has 135 MA's), (46, 5339), (53, 5378), (75, 5540), (90, 5615), (95, 5642), (100, 5669), (103, 5684), (105, 5699), (122, 5774), (126, 5795), (141, 5867), (151, 5900), (154, 5909), (165, 5972), (184, 6053), (185, 6056), (191, 6080), (200, 6116), (203, 6131), (214, 6182), (216, 6188), (217, 6191), (222, 6227),

Gene: Mangethe_6 Start: 5299, Stop: 6243, Start Num: 32

Candidate Starts for Mangethe_6:

(Start: 32 @5299 has 135 MA's), (45, 5332), (53, 5383), (75, 5545), (90, 5620), (95, 5647), (96, 5650), (100, 5674), (103, 5689), (105, 5704), (126, 5800), (137, 5854), (141, 5872), (151, 5905), (165, 5977), (184, 6058), (191, 6085), (200, 6121), (203, 6136), (214, 6187), (216, 6193), (222, 6232),

Gene: Marky_16 Start: 11698, Stop: 12666, Start Num: 38

Candidate Starts for Marky_16:

(Start: 38 @11698 has 18 MA's), (Start: 39 @11704 has 1 MA's), (43, 11722), (56, 11797), (60, 11815), (61, 11818), (73, 11908), (79, 11962), (97, 12055), (105, 12097), (110, 12115), (128, 12208), (153, 12319), (157, 12346), (171, 12412), (177, 12436), (188, 12487), (209, 12571), (212, 12580),

Gene: Martha_9 Start: 7515, Stop: 8402, Start Num: 30

Candidate Starts for Martha_9:

(Start: 30 @7515 has 19 MA's), (81, 7797), (88, 7833), (95, 7869), (99, 7893), (114, 7962), (116, 7977), (131, 8031), (133, 8046), (145, 8100), (176, 8202), (188, 8250), (214, 8346),

Gene: Matteo_6 Start: 4854, Stop: 5777, Start Num: 32

Candidate Starts for Matteo_6:

(Start: 32 @4854 has 135 MA's), (53, 4938), (62, 4986), (81, 5130), (100, 5229), (102, 5241), (138, 5409), (159, 5493), (164, 5514), (168, 5526), (179, 5565), (187, 5601), (194, 5634), (214, 5721),

Gene: Mbo4_6 Start: 5456, Stop: 6385, Start Num: 38

Candidate Starts for Mbo4_6:

(Start: 38 @5456 has 18 MA's), (42, 5471), (68, 5618), (86, 5753), (91, 5771), (96, 5798), (145, 6032), (160, 6095), (184, 6194), (185, 6197), (220, 6359),

Gene: Megiddo_6 Start: 5281, Stop: 6225, Start Num: 32

Candidate Starts for Megiddo_6:

(Start: 32 @5281 has 135 MA's), (46, 5326), (53, 5365), (75, 5527), (90, 5602), (95, 5629), (100, 5656), (103, 5671), (105, 5686), (122, 5761), (126, 5782), (141, 5854), (151, 5887), (154, 5896), (165, 5959), (184, 6040), (185, 6043), (191, 6067), (200, 6103), (203, 6118), (214, 6169), (216, 6175), (217, 6178), (222, 6214),

Gene: Melba_6 Start: 5209, Stop: 6138, Start Num: 37

Candidate Starts for Melba_6:

(Start: 37 @5209 has 48 MA's), (42, 5224), (47, 5248), (53, 5284), (57, 5308), (72, 5413), (75, 5446), (91, 5524), (96, 5551), (114, 5644), (115, 5650), (144, 5782), (154, 5812), (157, 5836), (161, 5851), (174, 5899), (176, 5911), (223, 6130),

Gene: Mellie_6 Start: 5209, Stop: 6138, Start Num: 37

Candidate Starts for Mellie_6:

(Start: 37 @5209 has 48 MA's), (42, 5224), (47, 5248), (53, 5284), (57, 5308), (75, 5446), (91, 5524), (96, 5551), (114, 5644), (115, 5650), (144, 5782), (154, 5812), (157, 5836), (161, 5851), (174, 5899), (176, 5911), (223, 6130),

Gene: MichaelScott_7 Start: 5345, Stop: 6268, Start Num: 32

Candidate Starts for MichaelScott_7:

(Start: 32 @5345 has 135 MA's), (53, 5429), (62, 5477), (102, 5732), (105, 5750), (137, 5897), (140, 5912), (159, 5984), (168, 6017), (187, 6092), (194, 6125), (208, 6191), (214, 6212), (222, 6257),

Gene: Microdon_15 Start: 11458, Stop: 12438, Start Num: 38

Candidate Starts for Microdon_15:

(Start: 38 @11458 has 18 MA's), (Start: 39 @11464 has 1 MA's), (43, 11482), (56, 11557), (60, 11575), (61, 11578), (73, 11668), (74, 11674), (79, 11722), (84, 11740), (96, 11803), (97, 11815), (98, 11818), (105, 11857), (118, 11923), (148, 12073), (149, 12076), (157, 12115), (188, 12256), (209, 12340), (212, 12349), (221, 12388),

Gene: MintFen_6 Start: 5209, Stop: 6138, Start Num: 37

Candidate Starts for MintFen_6:

(Start: 37 @5209 has 48 MA's), (42, 5224), (47, 5248), (53, 5284), (57, 5308), (72, 5413), (75, 5446), (91, 5524), (96, 5551), (114, 5644), (115, 5650), (144, 5782), (154, 5812), (157, 5836), (161, 5851), (174, 5899), (176, 5911), (223, 6130),

Gene: MissRona_6 Start: 5041, Stop: 5970, Start Num: 32

Candidate Starts for MissRona_6:

(Start: 32 @5041 has 135 MA's), (42, 5062), (50, 5104), (60, 5161), (68, 5209), (75, 5284), (81, 5314), (86, 5344), (91, 5362), (96, 5389), (97, 5401), (101, 5422), (112, 5473), (120, 5509), (140, 5602), (144, 5617), (154, 5647), (176, 5746), (184, 5782), (188, 5800), (214, 5917), (217, 5926),

Gene: Mocha12_6 Start: 4854, Stop: 5777, Start Num: 32

Candidate Starts for Mocha12_6:

(Start: 32 @4854 has 135 MA's), (53, 4938), (62, 4986), (81, 5130), (100, 5229), (102, 5241), (138, 5409), (159, 5493), (164, 5514), (168, 5526), (179, 5565), (187, 5601), (194, 5634), (214, 5721),

Gene: Mordred_12 Start: 9680, Stop: 10576, Start Num: 27

Candidate Starts for Mordred_12:

(Start: 27 @9680 has 17 MA's), (68, 9851), (72, 9905), (92, 10019), (107, 10103), (129, 10202), (155, 10322), (191, 10439), (193, 10454), (214, 10526),

Gene: MoyaNatalis_12 Start: 9683, Stop: 10579, Start Num: 27

Candidate Starts for MoyaNatalis_12:

(Start: 27 @9683 has 17 MA's), (68, 9854), (74, 9917), (92, 10022), (107, 10106), (129, 10205), (155, 10325), (191, 10442), (193, 10457), (214, 10529),

Gene: Mulch_10 Start: 6844, Stop: 7776, Start Num: 37

Candidate Starts for Mulch_10:

(Start: 37 @6844 has 48 MA's), (42, 6859), (52, 6916), (53, 6919), (55, 6931), (75, 7081), (81, 7111), (88, 7147), (91, 7159), (97, 7198), (114, 7279), (154, 7447), (161, 7486), (183, 7579), (215, 7720), (223, 7765),

Gene: Murp_6 Start: 5197, Stop: 6129, Start Num: 37

Candidate Starts for Murp_6:

(Start: 37 @5197 has 48 MA's), (42, 5212), (47, 5236), (53, 5272), (57, 5296), (72, 5401), (91, 5512), (96, 5539), (114, 5632), (143, 5767), (154, 5800), (157, 5824), (174, 5887), (176, 5899), (223, 6118),

Gene: Nadeem_10 Start: 6844, Stop: 7776, Start Num: 37

Candidate Starts for Nadeem_10:

(Start: 37 @6844 has 48 MA's), (42, 6859), (52, 6916), (53, 6919), (55, 6931), (75, 7081), (81, 7111), (88, 7147), (91, 7159), (97, 7198), (114, 7279), (154, 7447), (161, 7486), (183, 7579), (215, 7720), (223, 7765),

Gene: NancyRae_10 Start: 6844, Stop: 7776, Start Num: 37

Candidate Starts for NancyRae_10:

(Start: 37 @6844 has 48 MA's), (42, 6859), (52, 6916), (53, 6919), (55, 6931), (75, 7081), (81, 7111), (88, 7147), (91, 7159), (97, 7198), (114, 7279), (154, 7447), (161, 7486), (183, 7579), (215, 7720), (223, 7765),

Gene: Nandita_10 Start: 6592, Stop: 7521, Start Num: 31

Candidate Starts for Nandita_10:

(Start: 31 @6592 has 5 MA's), (47, 6640), (74, 6814), (96, 6943), (100, 6967), (153, 7213), (182, 7321), (187, 7345), (198, 7393), (212, 7459),

Gene: NathanVaag_8 Start: 7217, Stop: 8110, Start Num: 29

Candidate Starts for NathanVaag_8:

(Start: 29 @7217 has 13 MA's), (75, 7472), (81, 7502), (95, 7574), (131, 7736), (135, 7772), (153, 7829), (176, 7907), (188, 7955), (203, 8000), (208, 8030), (214, 8051),

Gene: Nazo_6 Start: 5266, Stop: 6216, Start Num: 32

Candidate Starts for Nazo_6:

(Start: 32 @5266 has 135 MA's), (53, 5350), (54, 5353), (90, 5587), (95, 5614), (100, 5641), (103, 5656), (105, 5671), (126, 5773), (141, 5845), (151, 5878), (154, 5887), (159, 5923), (164, 5944), (165, 5950), (181, 6016), (184, 6031), (191, 6058), (203, 6109), (216, 6166), (222, 6205),

Gene: Necropolis_6 Start: 5294, Stop: 6238, Start Num: 32

Candidate Starts for Necropolis_6:

(Start: 32 @5294 has 135 MA's), (46, 5339), (53, 5378), (75, 5540), (90, 5615), (95, 5642), (100, 5669), (103, 5684), (105, 5699), (122, 5774), (126, 5795), (141, 5867), (151, 5900), (154, 5909), (165, 5972), (184, 6053), (185, 6056), (191, 6080), (200, 6116), (203, 6131), (214, 6182), (216, 6188), (217, 6191), (222, 6227),

Gene: Nergal_11 Start: 8449, Stop: 9354, Start Num: 26

Candidate Starts for Nergal_11:

(Start: 26 @8449 has 3 MA's), (40, 8467), (49, 8512), (68, 8620), (71, 8650), (96, 8815), (135, 9013), (144, 9040), (168, 9124), (185, 9187), (189, 9205), (214, 9298), (217, 9307),

Gene: Nettuno_6 Start: 4854, Stop: 5777, Start Num: 32

Candidate Starts for Nettuno_6:

(Start: 32 @4854 has 135 MA's), (53, 4938), (62, 4986), (81, 5130), (100, 5229), (102, 5241), (138, 5409), (159, 5493), (164, 5514), (168, 5526), (179, 5565), (187, 5601), (194, 5634),

Gene: OBUpride_9 Start: 6580, Stop: 7536, Start Num: 32

Candidate Starts for OBUpride_9:

(Start: 32 @6580 has 135 MA's), (49, 6640), (56, 6682), (57, 6685), (75, 6823), (84, 6865), (88, 6889), (91, 6901), (97, 6940), (98, 6943), (99, 6949), (109, 6997), (112, 7012), (121, 7057), (145, 7174), (150, 7189), (154, 7201), (156, 7219), (163, 7249), (173, 7291), (174, 7294), (176, 7306), (186, 7348), (195, 7390), (223, 7525),

Gene: Obliviate_6 Start: 5233, Stop: 6162, Start Num: 37

Candidate Starts for Obliviate_6:

(Start: 37 @5233 has 48 MA's), (42, 5248), (47, 5272), (53, 5308), (57, 5332), (75, 5470), (91, 5548), (96, 5575), (114, 5668), (115, 5674), (144, 5806), (154, 5836), (157, 5860), (161, 5875), (174, 5923), (176, 5935), (223, 6154),

Gene: Ohgeesy_6 Start: 4895, Stop: 5824, Start Num: 32

Candidate Starts for Ohgeesy_6:

(Start: 32 @4895 has 135 MA's), (50, 4958), (57, 5000), (75, 5138), (86, 5198), (91, 5216), (112, 5327), (144, 5471), (154, 5501), (173, 5585), (176, 5600), (199, 5699), (214, 5771), (217, 5780),

Gene: Opie_6 Start: 5436, Stop: 6347, Start Num: 23

Candidate Starts for Opie_6:

(Start: 23 @5436 has 3 MA's), (33, 5454), (75, 5703), (94, 5802), (102, 5844), (104, 5853), (117, 5913), (211, 6279), (215, 6291),

Gene: Oregano_7 Start: 5016, Stop: 5939, Start Num: 32

Candidate Starts for Oregano_7:

(Start: 32 @5016 has 135 MA's), (53, 5100), (62, 5148), (102, 5403), (105, 5421), (137, 5568), (138, 5571), (140, 5583), (159, 5655), (168, 5688), (187, 5763), (194, 5796), (208, 5862), (214, 5883), (222, 5928),

Gene: PCoral7_6 Start: 5209, Stop: 6138, Start Num: 37

Candidate Starts for PCoral7_6:

(Start: 37 @5209 has 48 MA's), (42, 5224), (53, 5284), (72, 5413), (85, 5500), (91, 5524), (112, 5635), (115, 5650), (144, 5782), (154, 5812), (174, 5899), (175, 5905), (176, 5911), (223, 6130),

Gene: PantheRoc_5 Start: 4895, Stop: 5824, Start Num: 32

Candidate Starts for PantheRoc_5:

(Start: 32 @4895 has 135 MA's), (50, 4958), (57, 5000), (75, 5138), (86, 5198), (91, 5216), (112, 5327), (144, 5471), (154, 5501), (173, 5585), (176, 5600), (199, 5699), (214, 5771), (217, 5780),

Gene: Parada_10 Start: 6844, Stop: 7776, Start Num: 37

Candidate Starts for Parada_10:

(Start: 37 @6844 has 48 MA's), (42, 6859), (52, 6916), (53, 6919), (55, 6931), (75, 7081), (81, 7111), (88, 7147), (91, 7159), (97, 7198), (114, 7279), (154, 7447), (161, 7486), (183, 7579), (215, 7720), (223, 7765),

Gene: Petra_6 Start: 5041, Stop: 5970, Start Num: 32

Candidate Starts for Petra_6:

(Start: 32 @5041 has 135 MA's), (42, 5062), (50, 5104), (60, 5161), (68, 5209), (75, 5284), (81, 5314), (86, 5344), (91, 5362), (96, 5389), (97, 5401), (101, 5422), (112, 5473), (120, 5509), (140, 5602), (144, 5617), (154, 5647), (173, 5731), (176, 5746), (184, 5782), (188, 5800), (214, 5917), (217, 5926),

Gene: Phalm_6 Start: 5281, Stop: 6225, Start Num: 32

Candidate Starts for Phalm_6:

(Start: 32 @5281 has 135 MA's), (46, 5326), (53, 5365), (75, 5527), (90, 5602), (95, 5629), (100, 5656), (103, 5671), (105, 5686), (122, 5761), (126, 5782), (141, 5854), (151, 5887), (154, 5896), (165, 5959), (184, 6040), (185, 6043), (191, 6067), (200, 6103), (203, 6118), (214, 6169), (216, 6175), (217, 6178), (222, 6214),

Gene: Phayonce_6 Start: 5268, Stop: 6224, Start Num: 32

Candidate Starts for Phayonce_6:

(Start: 32 @5268 has 135 MA's), (46, 5313), (53, 5352), (54, 5355), (58, 5385), (74, 5490), (87, 5577), (90, 5589), (95, 5616), (100, 5643), (102, 5655), (105, 5673), (126, 5781), (137, 5835), (141, 5853), (151, 5886), (165, 5958), (184, 6039), (190, 6063), (191, 6066), (203, 6117), (214, 6168), (216, 6174), (222, 6213),

Gene: Phegasus_6 Start: 5299, Stop: 6243, Start Num: 32

Candidate Starts for Phegasus_6:

(Start: 32 @5299 has 135 MA's), (45, 5332), (53, 5383), (75, 5545), (90, 5620), (95, 5647), (96, 5650), (100, 5674), (103, 5689), (105, 5704), (126, 5800), (137, 5854), (141, 5872), (151, 5905), (165, 5977), (184, 6058), (191, 6085), (200, 6121), (203, 6136), (214, 6187), (216, 6193), (222, 6232),

Gene: Phineas_6 Start: 5282, Stop: 6226, Start Num: 32

Candidate Starts for Phineas_6:

(Start: 32 @5282 has 135 MA's), (46, 5327), (53, 5366), (75, 5528), (90, 5603), (95, 5630), (100, 5657), (103, 5672), (105, 5687), (122, 5762), (126, 5783), (141, 5855), (151, 5888), (154, 5897), (165, 5960), (184, 6041), (185, 6044), (191, 6068), (200, 6104), (203, 6119), (214, 6170), (216, 6176), (217, 6179), (222, 6215),

Gene: PhriskyACE_6 Start: 4843, Stop: 5766, Start Num: 32

Candidate Starts for PhriskyACE_6:

(Start: 32 @4843 has 135 MA's), (53, 4927), (62, 4975), (102, 5230), (105, 5248), (137, 5395), (138, 5398), (140, 5410), (159, 5482), (168, 5515), (187, 5590), (194, 5623), (208, 5689), (212, 5704), (214, 5710), (222, 5755),

Gene: PhrostedPhlake_6 Start: 5231, Stop: 6163, Start Num: 37

Candidate Starts for PhrostedPhlake_6:

(Start: 37 @5231 has 48 MA's), (42, 5246), (47, 5270), (53, 5306), (57, 5330), (72, 5435), (91, 5546), (96, 5573), (114, 5666), (143, 5801), (154, 5834), (157, 5858), (161, 5873), (174, 5921), (176, 5933), (223, 6152),

Gene: Piccoletto_8 Start: 7218, Stop: 8111, Start Num: 29

Candidate Starts for Piccoletto_8:

(Start: 29 @7218 has 13 MA's), (75, 7473), (81, 7503), (95, 7575), (135, 7773), (176, 7908), (188, 7956), (203, 8001), (208, 8031), (214, 8052),

Gene: Pickett_6 Start: 4854, Stop: 5777, Start Num: 32

Candidate Starts for Pickett_6:

(Start: 32 @4854 has 135 MA's), (53, 4938), (62, 4986), (81, 5130), (100, 5229), (102, 5241), (138, 5409), (159, 5493), (164, 5514), (168, 5526), (179, 5565), (187, 5601), (194, 5634), (214, 5721),

Gene: Pimento_9 Start: 6841, Stop: 7773, Start Num: 37

Candidate Starts for Pimento_9:

(Start: 37 @6841 has 48 MA's), (42, 6856), (52, 6913), (53, 6916), (55, 6928), (75, 7078), (81, 7108), (88, 7144), (91, 7156), (97, 7195), (114, 7276), (154, 7444), (161, 7483), (183, 7576), (215, 7717), (223, 7762),

Gene: Pipp_6 Start: 5233, Stop: 6162, Start Num: 37

Candidate Starts for Pipp_6:

(Start: 37 @5233 has 48 MA's), (42, 5248), (47, 5272), (53, 5308), (57, 5332), (72, 5437), (91, 5548), (96, 5575), (112, 5659), (114, 5668), (115, 5674), (144, 5806), (154, 5836), (157, 5860), (174, 5923), (176, 5935), (223, 6154),

Gene: Pippa_9 Start: 7607, Stop: 8494, Start Num: 30

Candidate Starts for Pippa_9:

(Start: 30 @7607 has 19 MA's), (66, 7757), (81, 7889), (95, 7961), (114, 8054), (116, 8069), (131, 8123), (133, 8138), (145, 8192), (185, 8327), (188, 8342), (208, 8417), (214, 8438),

Gene: Polkaroo_6 Start: 5294, Stop: 6238, Start Num: 32

Candidate Starts for Polkaroo_6:

(Start: 32 @5294 has 135 MA's), (46, 5339), (53, 5378), (75, 5540), (90, 5615), (95, 5642), (100, 5669), (103, 5684), (105, 5699), (122, 5774), (126, 5795), (141, 5867), (151, 5900), (154, 5909), (165, 5972), (184, 6053), (185, 6056), (191, 6080), (200, 6116), (203, 6131), (214, 6182), (216, 6188), (217, 6191), (222, 6227),

Gene: Popper_8 Start: 6084, Stop: 7013, Start Num: 31

Candidate Starts for Popper_8:

(Start: 31 @6084 has 5 MA's), (44, 6117), (74, 6306), (88, 6396), (91, 6408), (96, 6435), (100, 6459), (187, 6837), (212, 6951), (214, 6957),

Gene: Poushou_9 Start: 7329, Stop: 8234, Start Num: 25

Candidate Starts for Poushou_9:

(Start: 25 @7329 has 5 MA's), (49, 7398), (59, 7455), (70, 7515), (71, 7533), (72, 7551), (93, 7680), (96, 7689), (101, 7722), (112, 7770), (144, 7914), (150, 7932), (164, 7989), (192, 8094), (195, 8112), (213, 8175),

Gene: Powerball_6 Start: 4843, Stop: 5766, Start Num: 32

Candidate Starts for Powerball_6:

(Start: 32 @4843 has 135 MA's), (53, 4927), (62, 4975), (102, 5230), (105, 5248), (125, 5338), (145, 5428), (187, 5590), (194, 5623), (198, 5638), (208, 5689), (214, 5710), (222, 5755),

Gene: Prairie_8 Start: 7102, Stop: 7989, Start Num: 29

Candidate Starts for Prairie_8:

(Start: 29 @7102 has 13 MA's), (63, 7234), (68, 7267), (75, 7351), (83, 7387), (88, 7417), (98, 7471), (116, 7561), (123, 7582), (135, 7651), (150, 7699), (201, 7870), (208, 7909),

Gene: PrincePatrick_6 Start: 5210, Stop: 6139, Start Num: 37

Candidate Starts for PrincePatrick_6:

(Start: 37 @5210 has 48 MA's), (42, 5225), (53, 5285), (55, 5297), (72, 5414), (85, 5501), (91, 5525), (112, 5636), (115, 5651), (144, 5783), (154, 5813), (174, 5900), (176, 5912), (223, 6131),

Gene: PrincessTrina_12 Start: 9683, Stop: 10579, Start Num: 27

Candidate Starts for PrincessTrina_12:

(Start: 27 @9683 has 17 MA's), (68, 9854), (74, 9917), (92, 10022), (107, 10106), (129, 10205), (155, 10325), (172, 10373), (191, 10442), (193, 10457), (214, 10529),

Gene: Purky_6 Start: 5271, Stop: 6215, Start Num: 32

Candidate Starts for Purky_6:

(Start: 32 @5271 has 135 MA's), (53, 5355), (58, 5388), (74, 5493), (87, 5580), (90, 5592), (95, 5619), (100, 5646), (102, 5658), (105, 5676), (122, 5751), (126, 5772), (137, 5826), (141, 5844), (145, 5859), (151, 5877), (165, 5949), (184, 6030), (190, 6054), (191, 6057), (203, 6108), (216, 6165), (222, 6204),

Gene: Pygmy_6 Start: 5282, Stop: 6226, Start Num: 32

Candidate Starts for Pygmy_6:

(Start: 32 @5282 has 135 MA's), (46, 5327), (53, 5366), (75, 5528), (90, 5603), (95, 5630), (100, 5657), (103, 5672), (105, 5687), (122, 5762), (126, 5783), (141, 5855), (151, 5888), (154, 5897), (165, 5960), (184, 6041), (200, 6104), (203, 6119), (216, 6176), (217, 6179), (222, 6215),

Gene: REQ2_06 Start: 4914, Stop: 5852, Start Num: 35

Candidate Starts for REQ2_06:

(2, 4599), (3, 4641), (14, 4800), (Start: 35 @4914 has 7 MA's), (42, 4932), (47, 4956), (63, 5043), (82, 5187), (91, 5232), (96, 5259), (119, 5370), (145, 5496), (150, 5511), (154, 5523), (157, 5547), (178, 5628), (215, 5796), (223, 5841),

Gene: RayTheFireFly_7 Start: 5588, Stop: 6508, Start Num: 32

Candidate Starts for RayTheFireFly_7:

(Start: 32 @5588 has 135 MA's), (53, 5672), (81, 5864), (118, 6053), (125, 6083), (129, 6095), (138, 6143), (141, 6158), (145, 6173), (162, 6242), (164, 6248), (179, 6299), (181, 6308), (187, 6335), (203, 6401), (207, 6422), (208, 6431), (222, 6497),

Gene: Rem711_12 Start: 8310, Stop: 9215, Start Num: 24

Candidate Starts for Rem711_12:

(Start: 24 @8310 has 1 MA's), (48, 8379), (88, 8640), (96, 8679), (108, 8745), (111, 8757), (132, 8841), (153, 8928), (194, 9090), (215, 9162), (217, 9168),

Gene: RosiePosie_12 Start: 9683, Stop: 10579, Start Num: 27

Candidate Starts for RosiePosie_12:

(Start: 27 @9683 has 17 MA's), (68, 9854), (74, 9917), (92, 10022), (107, 10106), (129, 10205), (155, 10325), (191, 10442), (193, 10457), (214, 10529),

Gene: Ruthy_6 Start: 5494, Stop: 6426, Start Num: 37

Candidate Starts for Ruthy_6:

(Start: 37 @5494 has 48 MA's), (42, 5509), (55, 5581), (75, 5731), (88, 5797), (91, 5809), (92, 5812), (97, 5848), (114, 5929), (129, 6001), (154, 6097), (157, 6121), (174, 6184), (215, 6370),

Gene: Ryan_10 Start: 6702, Stop: 7631, Start Num: 31

Candidate Starts for Ryan_10:

(Start: 31 @6702 has 5 MA's), (74, 6924), (88, 7014), (100, 7077), (182, 7431), (187, 7455), (212, 7569),

Gene: Sahara_6 Start: 4845, Stop: 5768, Start Num: 32

Candidate Starts for Sahara_6:

(Start: 32 @4845 has 135 MA's), (53, 4929), (62, 4977), (81, 5121), (100, 5220), (102, 5232), (105, 5250), (138, 5400), (159, 5484), (164, 5505), (168, 5517), (187, 5592), (194, 5625), (214, 5712),

Gene: SamW_6 Start: 5118, Stop: 6050, Start Num: 38

Candidate Starts for SamW_6:

(22, 5085), (Start: 38 @5118 has 18 MA's), (75, 5355), (79, 5379), (85, 5409), (88, 5421), (95, 5457), (96, 5460), (101, 5493), (138, 5664), (144, 5691), (155, 5736), (168, 5790), (180, 5838), (196, 5910), (204, 5946), (205, 5958), (206, 5961), (210, 5982), (219, 6021), (222, 6039),

Gene: Samba_6 Start: 5210, Stop: 6139, Start Num: 37

Candidate Starts for Samba_6:

(Start: 37 @5210 has 48 MA's), (42, 5225), (47, 5249), (53, 5285), (57, 5309), (72, 5414), (75, 5447), (91, 5525), (96, 5552), (114, 5645), (115, 5651), (144, 5783), (154, 5813), (157, 5837), (161, 5852), (174, 5900), (176, 5912), (223, 6131),

Gene: Samman98_7 Start: 5345, Stop: 6268, Start Num: 32

Candidate Starts for Samman98_7:

(Start: 32 @5345 has 135 MA's), (53, 5429), (62, 5477), (102, 5732), (105, 5750), (137, 5897), (138, 5900), (140, 5912), (159, 5984), (168, 6017), (187, 6092), (194, 6125), (208, 6191), (214, 6212), (222, 6257),

Gene: Savage_6 Start: 4854, Stop: 5777, Start Num: 32

Candidate Starts for Savage_6:

(Start: 32 @4854 has 135 MA's), (53, 4938), (62, 4986), (81, 5130), (100, 5229), (102, 5241), (138, 5409), (159, 5493), (164, 5514), (168, 5526), (179, 5565), (187, 5601), (194, 5634), (214, 5721),

Gene: Scavito_12 Start: 9680, Stop: 10576, Start Num: 27

Candidate Starts for Scavito_12:

(Start: 27 @9680 has 17 MA's), (68, 9851), (72, 9905), (92, 10019), (107, 10103), (129, 10202), (155, 10322), (191, 10439), (193, 10454), (214, 10526),

Gene: Schnabeltier_6 Start: 5428, Stop: 6339, Start Num: 23

Candidate Starts for Schnabeltier_6:

(12, 5320), (Start: 23 @5428 has 3 MA's), (33, 5446), (75, 5695), (94, 5794), (102, 5836), (104, 5845), (117, 5905), (211, 6271), (215, 6283),

Gene: Sekhmet_7 Start: 5345, Stop: 6268, Start Num: 32

Candidate Starts for Sekhmet_7:

(Start: 32 @5345 has 135 MA's), (53, 5429), (62, 5477), (102, 5732), (105, 5750), (137, 5897), (138, 5900), (140, 5912), (159, 5984), (168, 6017), (187, 6092), (194, 6125), (208, 6191), (214, 6212), (222, 6257),

Gene: Shade_9 Start: 7556, Stop: 8443, Start Num: 30

Candidate Starts for Shade_9:

(Start: 30 @7556 has 19 MA's), (81, 7838), (88, 7874), (95, 7910), (99, 7934), (114, 8003), (116, 8018), (131, 8072), (133, 8087), (145, 8141), (176, 8243), (188, 8291), (214, 8387),

Gene: Shipwreck_6 Start: 5282, Stop: 6226, Start Num: 32

Candidate Starts for Shipwreck_6:

(Start: 32 @5282 has 135 MA's), (46, 5327), (53, 5366), (75, 5528), (90, 5603), (95, 5630), (100, 5657), (103, 5672), (105, 5687), (122, 5762), (126, 5783), (141, 5855), (151, 5888), (154, 5897), (165, 5960), (184, 6041), (200, 6104), (203, 6119), (216, 6176), (217, 6179), (222, 6215),

Gene: Shlim410_6 Start: 4904, Stop: 5836, Start Num: 32

Candidate Starts for Shlim410_6:

(Start: 32 @4904 has 135 MA's), (42, 4928), (49, 4967), (50, 4970), (57, 5012), (68, 5075), (86, 5210), (91, 5228), (96, 5255), (112, 5339), (114, 5348), (126, 5411), (140, 5468), (145, 5486), (154, 5513), (157, 5537), (161, 5552), (168, 5582), (176, 5612), (185, 5651), (214, 5783), (217, 5792),

Gene: Sicarius2_10 Start: 8104, Stop: 8994, Start Num: 30

Candidate Starts for Sicarius2_10:

(Start: 30 @8104 has 19 MA's), (52, 8188), (75, 8356), (81, 8386), (88, 8422), (99, 8482), (114, 8551), (131, 8620), (145, 8689), (172, 8779), (188, 8839), (191, 8848), (208, 8914), (214, 8935),

Gene: Sidious_6 Start: 4898, Stop: 5827, Start Num: 32

Candidate Starts for Sidious_6:

(Start: 32 @4898 has 135 MA's), (50, 4961), (57, 5003), (68, 5066), (86, 5201), (91, 5219), (112, 5330), (144, 5474), (154, 5504), (173, 5588), (176, 5603), (185, 5642), (199, 5702), (214, 5774), (217, 5783),

Gene: SoilAssassin_6 Start: 4854, Stop: 5777, Start Num: 32

Candidate Starts for SoilAssassin_6:

(Start: 32 @4854 has 135 MA's), (53, 4938), (62, 4986), (81, 5130), (100, 5229), (102, 5241), (138, 5409), (159, 5493), (164, 5514), (168, 5526), (179, 5565), (187, 5601), (194, 5634), (214, 5721),

Gene: Sonah_6 Start: 5299, Stop: 6243, Start Num: 32

Candidate Starts for Sonah_6:

(Start: 32 @5299 has 135 MA's), (45, 5332), (53, 5383), (75, 5545), (90, 5620), (95, 5647), (100, 5674), (103, 5689), (105, 5704), (126, 5800), (137, 5854), (141, 5872), (151, 5905), (165, 5977), (184, 6058), (191, 6085), (200, 6121), (203, 6136), (214, 6187), (216, 6193), (222, 6232),

Gene: Sonny_9 Start: 7577, Stop: 8464, Start Num: 30

Candidate Starts for Sonny_9:

(Start: 30 @7577 has 19 MA's), (81, 7859), (88, 7895), (95, 7931), (99, 7955), (114, 8024), (116, 8039), (131, 8093), (133, 8108), (145, 8162), (176, 8264), (188, 8312), (214, 8408),

Gene: Sproutie_6 Start: 4854, Stop: 5777, Start Num: 32

Candidate Starts for Sproutie_6:

(Start: 32 @4854 has 135 MA's), (53, 4938), (62, 4986), (81, 5130), (100, 5229), (102, 5241), (138, 5409), (159, 5493), (164, 5514), (168, 5526), (179, 5565), (187, 5601), (194, 5634), (214, 5721),

Gene: StAB_6 Start: 5123, Stop: 6055, Start Num: 38

Candidate Starts for StAB_6:

(22, 5090), (Start: 38 @5123 has 18 MA's), (75, 5360), (79, 5384), (85, 5414), (88, 5426), (95, 5462), (96, 5465), (101, 5498), (138, 5669), (144, 5696), (155, 5741), (168, 5795), (180, 5843), (196, 5915), (204, 5951), (205, 5963), (206, 5966), (210, 5987), (219, 6026), (222, 6044),

Gene: StevieBAY_9 Start: 7550, Stop: 8437, Start Num: 30

Candidate Starts for StevieBAY_9:

(Start: 30 @7550 has 19 MA's), (68, 7718), (81, 7832), (88, 7868), (99, 7928), (114, 7997), (135, 8102), (146, 8138), (170, 8219), (176, 8237), (188, 8285), (208, 8360), (214, 8381),

Gene: StevieRay_6 Start: 5285, Stop: 6229, Start Num: 32

Candidate Starts for StevieRay_6:

(Start: 32 @5285 has 135 MA's), (46, 5330), (53, 5369), (75, 5531), (90, 5606), (95, 5633), (100, 5660), (103, 5675), (105, 5690), (122, 5765), (126, 5786), (141, 5858), (151, 5891), (154, 5900), (165, 5963), (184, 6044), (185, 6047), (191, 6071), (200, 6107), (203, 6122), (214, 6173), (216, 6179), (217, 6182), (222, 6218),

Gene: Stiles_6 Start: 5123, Stop: 6055, Start Num: 38

Candidate Starts for Stiles_6:

(22, 5090), (Start: 38 @5123 has 18 MA's), (75, 5360), (79, 5384), (85, 5414), (88, 5426), (95, 5462), (96, 5465), (101, 5498), (138, 5669), (144, 5696), (155, 5741), (168, 5795), (180, 5843), (196, 5915), (204, 5951), (205, 5963), (206, 5966), (210, 5987), (219, 6026), (222, 6044),

Gene: StressBall_6 Start: 5281, Stop: 6225, Start Num: 32

Candidate Starts for StressBall_6:

(Start: 32 @5281 has 135 MA's), (46, 5326), (53, 5365), (75, 5527), (90, 5602), (95, 5629), (100, 5656), (103, 5671), (105, 5686), (122, 5761), (126, 5782), (141, 5854), (151, 5887), (154, 5896), (165, 5959), (184, 6040), (185, 6043), (191, 6067), (200, 6103), (203, 6118), (214, 6169), (216, 6175), (217, 6178), (222, 6214),

Gene: Stuff_15 Start: 11658, Stop: 12632, Start Num: 39

Candidate Starts for Stuff_15:

(Start: 38 @11652 has 18 MA's), (Start: 39 @11658 has 1 MA's), (43, 11676), (56, 11751), (60, 11769), (61, 11772), (73, 11862), (74, 11868), (79, 11916), (84, 11934), (96, 11997), (97, 12009), (98, 12012), (105, 12051), (148, 12267), (149, 12270), (157, 12309), (188, 12450), (209, 12534), (212, 12543), (221, 12582),

Gene: Suerte_6 Start: 4843, Stop: 5766, Start Num: 32

Candidate Starts for Suerte_6:

(Start: 32 @4843 has 135 MA's), (53, 4927), (62, 4975), (102, 5230), (105, 5248), (137, 5395), (140, 5410), (159, 5482), (168, 5515), (187, 5590), (194, 5623), (208, 5689), (214, 5710), (222, 5755),

Gene: TaeYoung_9 Start: 7578, Stop: 8465, Start Num: 30

Candidate Starts for TaeYoung_9:

(Start: 30 @7578 has 19 MA's), (81, 7860), (88, 7896), (95, 7932), (99, 7956), (114, 8025), (116, 8040), (131, 8094), (133, 8109), (145, 8163), (176, 8265), (188, 8313), (214, 8409),

Gene: TaronosaurusRx_6 Start: 5435, Stop: 6346, Start Num: 23

Candidate Starts for TaronosaurusRx_6:

(Start: 23 @5435 has 3 MA's), (33, 5453), (75, 5702), (94, 5801), (102, 5843), (104, 5852), (117, 5912), (211, 6278), (215, 6290),

Gene: Techage_6 Start: 5302, Stop: 6246, Start Num: 32

Candidate Starts for Techage_6:

(Start: 32 @5302 has 135 MA's), (45, 5335), (53, 5386), (74, 5524), (75, 5548), (90, 5623), (95, 5650), (96, 5653), (100, 5677), (103, 5692), (105, 5707), (126, 5803), (137, 5857), (141, 5875), (151, 5908), (165, 5980), (184, 6061), (191, 6088), (200, 6124), (203, 6139), (214, 6190), (216, 6196), (222, 6235),

Gene: Thespis_6 Start: 5281, Stop: 6225, Start Num: 32

Candidate Starts for Thespis_6:

(Start: 32 @5281 has 135 MA's), (46, 5326), (53, 5365), (75, 5527), (90, 5602), (95, 5629), (96, 5632), (100, 5656), (103, 5671), (105, 5686), (122, 5761), (126, 5782), (141, 5854), (151, 5887), (154, 5896), (165, 5959), (184, 6040), (185, 6043), (191, 6067), (200, 6103), (203, 6118), (214, 6169), (216, 6175), (217, 6178), (222, 6214),

Gene: Thimann_7 Start: 5345, Stop: 6268, Start Num: 32

Candidate Starts for Thimann_7:

(Start: 32 @5345 has 135 MA's), (53, 5429), (62, 5477), (102, 5732), (105, 5750), (137, 5897), (138, 5900), (140, 5912), (159, 5984), (168, 6017), (187, 6092), (194, 6125), (208, 6191), (214, 6212), (222, 6257),

Gene: ThulaThula_6 Start: 5313, Stop: 6269, Start Num: 32

Candidate Starts for ThulaThula_6:

(Start: 32 @5313 has 135 MA's), (46, 5358), (53, 5397), (54, 5400), (58, 5430), (74, 5535), (87, 5622), (90, 5634), (95, 5661), (100, 5688), (102, 5700), (105, 5718), (126, 5826), (137, 5880), (141, 5898), (151, 5931), (165, 6003), (184, 6084), (190, 6108), (191, 6111), (203, 6162), (214, 6213), (216, 6219), (222, 6258),

Gene: Timinator_9 Start: 7549, Stop: 8436, Start Num: 30

Candidate Starts for Timinator_9:

(Start: 30 @7549 has 19 MA's), (68, 7717), (81, 7831), (88, 7867), (99, 7927), (114, 7996), (135, 8101), (146, 8137), (170, 8218), (176, 8236), (188, 8284), (208, 8359), (214, 8380),

Gene: Toast_6 Start: 5209, Stop: 6138, Start Num: 37

Candidate Starts for Toast_6:

(Start: 37 @5209 has 48 MA's), (42, 5224), (53, 5284), (72, 5413), (85, 5500), (91, 5524), (112, 5635), (115, 5650), (144, 5782), (154, 5812), (174, 5899), (175, 5905), (176, 5911), (223, 6130),

Gene: Tophat_12 Start: 9682, Stop: 10578, Start Num: 27

Candidate Starts for Tophat_12:

(Start: 27 @9682 has 17 MA's), (68, 9853), (72, 9907), (76, 9943), (92, 10021), (107, 10105), (129, 10204), (155, 10324), (191, 10441), (193, 10456), (214, 10528),

Gene: Tortellini_6 Start: 5252, Stop: 6196, Start Num: 32

Candidate Starts for Tortellini_6:

(5, 4994), (6, 5006), (8, 5102), (Start: 32 @5252 has 135 MA's), (45, 5285), (53, 5336), (58, 5369), (87, 5561), (95, 5600), (100, 5627), (102, 5639), (109, 5672), (122, 5732), (126, 5753), (137, 5807), (141, 5825), (145, 5840), (151, 5858), (159, 5903), (165, 5930), (176, 5978), (184, 6011), (190, 6035), (203, 6089), (214, 6140), (216, 6146), (222, 6185),

Gene: TouchMeNot_9 Start: 7329, Stop: 8234, Start Num: 25

Candidate Starts for TouchMeNot_9:

(Start: 25 @7329 has 5 MA's), (49, 7398), (59, 7455), (70, 7515), (71, 7533), (72, 7551), (93, 7680), (96, 7689), (101, 7722), (112, 7770), (144, 7914), (150, 7932), (164, 7989), (192, 8094), (195, 8112), (213, 8175),

Gene: Troy_6 Start: 5118, Stop: 6050, Start Num: 38

Candidate Starts for Troy_6:

(22, 5085), (Start: 38 @5118 has 18 MA's), (75, 5355), (79, 5379), (85, 5409), (88, 5421), (95, 5457), (96, 5460), (101, 5493), (138, 5664), (144, 5691), (155, 5736), (168, 5790), (180, 5838), (196, 5910), (204, 5946), (205, 5958), (206, 5961), (210, 5982), (219, 6021), (222, 6039),

Gene: TuertoX_6 Start: 4854, Stop: 5777, Start Num: 32

Candidate Starts for TuertoX_6:

(Start: 32 @4854 has 135 MA's), (53, 4938), (62, 4986), (81, 5130), (100, 5229), (102, 5241), (138, 5409), (159, 5493), (164, 5514), (168, 5526), (179, 5565), (187, 5601), (194, 5634), (214, 5721),

Gene: Twinkle_6 Start: 4904, Stop: 5836, Start Num: 32

Candidate Starts for Twinkle_6:

(Start: 32 @4904 has 135 MA's), (42, 4928), (49, 4967), (50, 4970), (57, 5012), (68, 5075), (86, 5210), (91, 5228), (96, 5255), (112, 5339), (114, 5348), (126, 5411), (140, 5468), (145, 5486), (154, 5513), (157, 5537), (161, 5552), (168, 5582), (176, 5612), (185, 5651), (214, 5783), (217, 5792),

Gene: UNTPL_16 Start: 11770, Stop: 12738, Start Num: 38

Candidate Starts for UNTPL_16:

(Start: 38 @11770 has 18 MA's), (Start: 39 @11776 has 1 MA's), (43, 11794), (56, 11869), (60, 11887), (61, 11890), (73, 11980), (74, 11986), (79, 12034), (84, 12052), (96, 12115), (97, 12127), (98, 12130), (105, 12169), (149, 12379), (153, 12391), (157, 12418), (158, 12427), (171, 12484), (177, 12508), (209, 12643), (212, 12652),

Gene: Ubuntu_9 Start: 6586, Stop: 7542, Start Num: 32

Candidate Starts for Ubuntu_9:

(Start: 32 @6586 has 135 MA's), (49, 6646), (56, 6688), (57, 6691), (75, 6829), (84, 6871), (88, 6895), (91, 6907), (97, 6946), (98, 6949), (99, 6955), (109, 7003), (112, 7018), (121, 7063), (145, 7180), (150, 7195), (154, 7207), (156, 7225), (163, 7255), (173, 7297), (174, 7300), (176, 7312), (186, 7354), (195, 7396), (223, 7531),

Gene: UmaThurman_6 Start: 5209, Stop: 6138, Start Num: 37

Candidate Starts for UmaThurman_6:

(Start: 37 @5209 has 48 MA's), (42, 5224), (47, 5248), (53, 5284), (57, 5308), (72, 5413), (91, 5524), (96, 5551), (114, 5644), (115, 5650), (144, 5782), (154, 5812), (157, 5836), (161, 5851), (174, 5899), (176, 5911), (223, 6130),

Gene: Utz_6 Start: 5209, Stop: 6138, Start Num: 37

Candidate Starts for Utz_6:

(Start: 37 @5209 has 48 MA's), (42, 5224), (47, 5248), (53, 5284), (57, 5308), (75, 5446), (91, 5524), (96, 5551), (114, 5644), (115, 5650), (144, 5782), (154, 5812), (157, 5836), (161, 5851), (174, 5899), (176, 5911), (223, 6130),

Gene: Vasanti_6 Start: 4855, Stop: 5778, Start Num: 32

Candidate Starts for Vasanti_6:

(Start: 32 @4855 has 135 MA's), (53, 4939), (81, 5131), (100, 5230), (102, 5242), (138, 5410), (159, 5494), (164, 5515), (168, 5527), (187, 5602), (194, 5635), (214, 5722),

Gene: Venti_6 Start: 5294, Stop: 6238, Start Num: 32

Candidate Starts for Venti_6:

(Start: 32 @5294 has 135 MA's), (46, 5339), (53, 5378), (75, 5540), (90, 5615), (95, 5642), (100, 5669), (103, 5684), (105, 5699), (122, 5774), (126, 5795), (141, 5867), (151, 5900), (154, 5909), (165, 5972), (184, 6053), (185, 6056), (191, 6080), (200, 6116), (203, 6131), (214, 6182), (216, 6188), (217, 6191), (222, 6227),

Gene: Vibaki_10 Start: 9201, Stop: 10082, Start Num: 29

Candidate Starts for Vibaki_10:

(Start: 29 @9201 has 13 MA's), (72, 9414), (75, 9447), (88, 9513), (95, 9549), (114, 9642), (176, 9882), (191, 9939), (202, 9972), (214, 10026),

Gene: Vidya_6 Start: 5294, Stop: 6238, Start Num: 32

Candidate Starts for Vidya_6:

(Start: 32 @5294 has 135 MA's), (46, 5339), (53, 5378), (75, 5540), (90, 5615), (95, 5642), (100, 5669), (103, 5684), (105, 5699), (122, 5774), (126, 5795), (141, 5867), (151, 5900), (154, 5909), (165, 5972), (184, 6053), (185, 6056), (191, 6080), (200, 6116), (203, 6131), (214, 6182), (216, 6188), (217, 6191), (222, 6227),

6191), (222, 6227),

Gene: Walrus_6 Start: 5044, Stop: 5973, Start Num: 32

Candidate Starts for Walrus_6:

(Start: 32 @5044 has 135 MA's), (42, 5065), (50, 5107), (60, 5164), (68, 5212), (75, 5287), (81, 5317), (86, 5347), (91, 5365), (96, 5392), (97, 5404), (101, 5425), (112, 5476), (120, 5512), (140, 5605), (144, 5620), (154, 5650), (161, 5689), (173, 5734), (176, 5749), (184, 5785), (188, 5803), (214, 5920), (217, 5929),

Gene: Webster2_9 Start: 6586, Stop: 7542, Start Num: 32

Candidate Starts for Webster2_9:

(Start: 32 @6586 has 135 MA's), (49, 6646), (56, 6688), (57, 6691), (75, 6829), (84, 6871), (88, 6895), (91, 6907), (97, 6946), (98, 6949), (99, 6955), (109, 7003), (112, 7018), (121, 7063), (145, 7180), (150, 7195), (154, 7207), (156, 7225), (163, 7255), (173, 7297), (174, 7300), (176, 7312), (186, 7354), (195, 7396), (223, 7531),

Gene: Weirido19_7 Start: 5454, Stop: 6380, Start Num: 41

Candidate Starts for Weirido19_7:

(Start: 35 @5439 has 7 MA's), (41, 5454), (42, 5457), (51, 5511), (53, 5517), (57, 5541), (75, 5679), (77, 5694), (81, 5709), (91, 5757), (97, 5796), (106, 5841), (112, 5868), (139, 5997), (144, 6021), (145, 6024), (152, 6045), (153, 6048), (169, 6123), (172, 6132), (195, 6234), (215, 6324), (223, 6369),

Gene: Whack_6 Start: 4913, Stop: 5842, Start Num: 32

Candidate Starts for Whack_6:

(Start: 32 @4913 has 135 MA's), (49, 4973), (50, 4976), (55, 5006), (57, 5018), (68, 5081), (91, 5234), (144, 5489), (149, 5504), (154, 5519), (173, 5603), (184, 5654), (214, 5789), (217, 5798),

Gene: WheatThin_10 Start: 6844, Stop: 7776, Start Num: 37

Candidate Starts for WheatThin_10:

(Start: 37 @6844 has 48 MA's), (42, 6859), (52, 6916), (53, 6919), (55, 6931), (75, 7081), (81, 7111), (88, 7147), (91, 7159), (97, 7198), (114, 7279), (154, 7447), (161, 7486), (183, 7579), (215, 7720), (223, 7765),

Gene: Whiteclaw_6 Start: 4854, Stop: 5777, Start Num: 32

Candidate Starts for Whiteclaw_6:

(Start: 32 @4854 has 135 MA's), (53, 4938), (62, 4986), (81, 5130), (100, 5229), (102, 5241), (138, 5409), (159, 5493), (164, 5514), (168, 5526), (179, 5565), (187, 5601), (194, 5634), (214, 5721),

Gene: William_6 Start: 5209, Stop: 6138, Start Num: 37

Candidate Starts for William_6:

(Start: 37 @5209 has 48 MA's), (42, 5224), (53, 5284), (72, 5413), (85, 5500), (91, 5524), (112, 5635), (115, 5650), (144, 5782), (154, 5812), (174, 5899), (176, 5911), (223, 6130),

Gene: Willsammy_6 Start: 5284, Stop: 6228, Start Num: 32

Candidate Starts for Willsammy_6:

(Start: 32 @5284 has 135 MA's), (46, 5329), (53, 5368), (75, 5530), (90, 5605), (95, 5632), (96, 5635), (100, 5659), (103, 5674), (105, 5689), (122, 5764), (126, 5785), (141, 5857), (151, 5890), (154, 5899), (165, 5962), (184, 6043), (191, 6070), (200, 6106), (203, 6121), (214, 6172), (216, 6178), (217, 6181), (222, 6217),

Gene: WinkNick_7 Start: 5345, Stop: 6268, Start Num: 32

Candidate Starts for WinkNick_7:

(Start: 32 @5345 has 135 MA's), (53, 5429), (62, 5477), (102, 5732), (105, 5750), (137, 5897), (138, 5900), (140, 5912), (159, 5984), (168, 6017), (187, 6092), (194, 6125), (208, 6191), (214, 6212), (222, 6257),

Gene: Wishmaker_9 Start: 6586, Stop: 7542, Start Num: 32

Candidate Starts for Wishmaker_9:

(Start: 32 @6586 has 135 MA's), (49, 6646), (56, 6688), (57, 6691), (75, 6829), (84, 6871), (88, 6895), (91, 6907), (97, 6946), (98, 6949), (99, 6955), (109, 7003), (112, 7018), (121, 7063), (145, 7180), (150, 7195), (154, 7207), (156, 7225), (163, 7255), (173, 7297), (174, 7300), (176, 7312), (186, 7354), (195, 7396), (223, 7531),

Gene: Wisp_6 Start: 5209, Stop: 6138, Start Num: 37

Candidate Starts for Wisp_6:

(Start: 37 @5209 has 48 MA's), (42, 5224), (47, 5248), (53, 5284), (57, 5308), (72, 5413), (75, 5446), (91, 5524), (96, 5551), (114, 5644), (115, 5650), (144, 5782), (154, 5812), (157, 5836), (161, 5851), (174, 5899), (176, 5911), (223, 6130),

Gene: Wocket_6 Start: 5200, Stop: 6132, Start Num: 37

Candidate Starts for Wocket_6:

(18, 5110), (Start: 37 @5200 has 48 MA's), (42, 5215), (47, 5239), (53, 5275), (57, 5299), (72, 5404), (91, 5515), (96, 5542), (112, 5626), (114, 5635), (143, 5770), (154, 5803), (157, 5827), (174, 5890), (176, 5902), (223, 6121),

Gene: Wyborn_10 Start: 7965, Stop: 8855, Start Num: 30

Candidate Starts for Wyborn_10:

(Start: 30 @7965 has 19 MA's), (52, 8049), (75, 8217), (81, 8247), (88, 8283), (99, 8343), (114, 8412), (131, 8481), (135, 8517), (145, 8550), (172, 8640), (188, 8700), (191, 8709), (203, 8745), (208, 8775), (214, 8796),

Gene: Xavia_6 Start: 5296, Stop: 6240, Start Num: 32

Candidate Starts for Xavia_6:

(Start: 32 @5296 has 135 MA's), (46, 5341), (53, 5380), (75, 5542), (90, 5617), (95, 5644), (100, 5671), (103, 5686), (105, 5701), (122, 5776), (126, 5797), (141, 5869), (151, 5902), (154, 5911), (165, 5974), (184, 6055), (185, 6058), (191, 6082), (200, 6118), (203, 6133), (214, 6184), (216, 6190), (217, 6193), (222, 6229),

Gene: Yeet412_6 Start: 4854, Stop: 5777, Start Num: 32

Candidate Starts for Yeet412_6:

(Start: 32 @4854 has 135 MA's), (53, 4938), (62, 4986), (81, 5130), (100, 5229), (102, 5241), (138, 5409), (159, 5493), (164, 5514), (168, 5526), (179, 5565), (187, 5601), (194, 5634), (214, 5721),

Gene: Yeezy_6 Start: 4895, Stop: 5824, Start Num: 32

Candidate Starts for Yeezy_6:

(Start: 32 @4895 has 135 MA's), (50, 4958), (57, 5000), (75, 5138), (86, 5198), (91, 5216), (112, 5327), (144, 5471), (154, 5501), (173, 5585), (176, 5600), (199, 5699), (214, 5771), (217, 5780),

Gene: ZAYM_6 Start: 5428, Stop: 6339, Start Num: 23

Candidate Starts for ZAYM_6:

(Start: 23 @5428 has 3 MA's), (33, 5446), (75, 5695), (94, 5794), (102, 5836), (104, 5845), (117, 5905), (211, 6271), (215, 6283),

Gene: Zaheer_10 Start: 6791, Stop: 7720, Start Num: 31

Candidate Starts for Zaheer_10:

(Start: 31 @6791 has 5 MA's), (74, 7013), (88, 7103), (100, 7166), (182, 7520), (187, 7544), (212, 7658),

Gene: Zarbodnamra_6 Start: 5208, Stop: 6137, Start Num: 37

Candidate Starts for Zarbodnamra_6:

(Start: 37 @5208 has 48 MA's), (42, 5223), (47, 5247), (53, 5283), (57, 5307), (72, 5412), (75, 5445), (91, 5523), (96, 5550), (114, 5643), (115, 5649), (144, 5781), (154, 5811), (157, 5835), (161, 5850), (174, 5898), (176, 5910), (223, 6129),

Gene: Zartrosa_9 Start: 7577, Stop: 8464, Start Num: 30

Candidate Starts for Zartrosa_9:

(Start: 30 @7577 has 19 MA's), (81, 7859), (95, 7931), (99, 7955), (114, 8024), (116, 8039), (131, 8093), (133, 8108), (145, 8162), (176, 8264), (188, 8312), (214, 8408),

Gene: ZiggyZoo_6 Start: 5233, Stop: 6162, Start Num: 37

Candidate Starts for ZiggyZoo_6:

(Start: 37 @5233 has 48 MA's), (42, 5248), (47, 5272), (53, 5308), (57, 5332), (75, 5470), (91, 5548), (96, 5575), (114, 5668), (115, 5674), (144, 5806), (154, 5836), (157, 5860), (161, 5875), (174, 5923), (176, 5935), (223, 6154),

Gene: Zilizebeth_6 Start: 5294, Stop: 6238, Start Num: 32

Candidate Starts for Zilizebeth_6:

(Start: 32 @5294 has 135 MA's), (46, 5339), (53, 5378), (75, 5540), (90, 5615), (95, 5642), (100, 5669), (103, 5684), (105, 5699), (122, 5774), (126, 5795), (141, 5867), (151, 5900), (154, 5909), (165, 5972), (184, 6053), (185, 6056), (191, 6080), (200, 6116), (203, 6131), (214, 6182), (216, 6188), (217, 6191), (222, 6227),