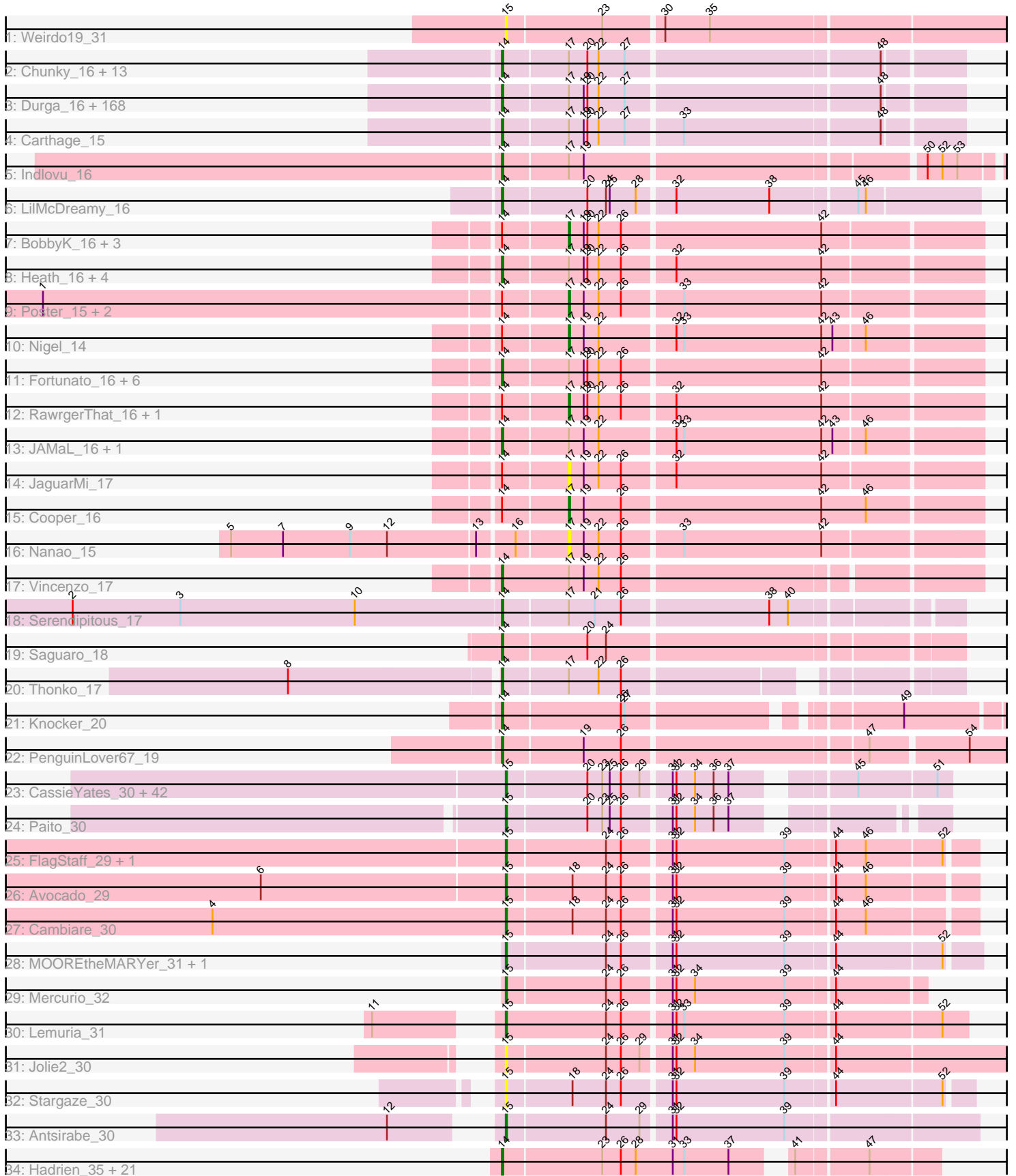


Pham 169649



Note: Tracks are now grouped by subcluster and scaled. Switching in subcluster is indicated by changes in track color. Track scale is now set by default to display the region 30 bp upstream of start 1 to 30 bp downstream of the last possible start. If this default region is judged to be packed too tightly with annotated starts, the track will be further scaled to only show that region of the ORF with annotated starts. This action will be indicated by adding "Zoomed" to the title. For starts, yellow indicates the location of called starts comprised solely of Glimmer/GeneMark auto-annotations, green indicates the location of called starts with at least 1 manual gene annotation.

Pham 169649 Report

This analysis was run 07/09/24 on database version 566.

Pham number 169649 has 297 members, 10 are drafts.

Phages represented in each track:

- Track 1 : Weirdo19_31
- Track 2 : Chunky_16, SDcharge11_16, Dingo_16, DirtJuice_16, Usavi_16, Podrick_16, MiniBoss_16, BlueHusk_16, Mikota_16, Lulwa_16, Horchata_16, Robyn_15, KingVeVeVe_16, Crownjwl_16
- Track 3 : Durga_16, Hetaeria_16, BlackStallion_16, Inchworm_16, Labeouficaum_15, CharlieGBrown_15, Held_16, HSavage_16, DaddyDaniels_16, Phergie_15, Bishoperium_15, Placalicious_15, Hocus_15, Mecca_15, Zaider_17, Mcshane_15, AbsoluteMadLad_15, Kimbrough_16, HenryJackson_15, CampRoach_16, Morty_16, Struggle_15, FugateOSU_15, Fringe_16, Lumine_15, Quisquilliae_16, LeeLot_16, JangoPhett_16, JacAttac_16, Roliet_16, Wallhey_15, Toni_15, Craff_16, Pherdinand_16, Cher_15, Phamished_16, Kwadwo_15, Legolas_15, Waterdiva_16, MichaelPhcott_15, GeneCoco_16, Dione_15, PhrodoBaggins_15, LemonSlice_16, Phareon_16, Piglet_0015, Nicole21_16, Maru_15, Chorkpop_16, Phleuron_15, Slatt_16, Gareth_15, Hertubise_16, Derpp_15, Vivaldi_16, Jiminy_15, Fozzie_15, Mesh1_16, Kwksand96_15, Simielle_15, Giraffe_16, Squiggle_16, Plmatters_16, Zelda_16, EmpTee_16, UAch1_16, Melc17_16, LostAndPhound_15, Burr_15, Beaglebox_15, Mag7_15, DonSanchon_15, Cannibal_16, Bluephacebaby_15, Buckeye_16, MRabcd_15, Tomlarah_16, Nacho_0016, Adriana_16, CheetO_16, Hartsy_16, Valjean_16, AltPhacts_16, JakeO_15, Lego3393_16, Gyarad_0016, Oline_15, Sheila_16, LasagnaCat_16, Spartan300_16, Cosmolli16_15, Altwerkus_15, Samaymay_16, Pipsqueak_16, Squid_16, Virapocalypse_16, Frankicide_16, ShiVal_16, Tooj_16, Schadenfreude_15, Roscoe_17, Childish_15, LuckyMarjie_15, Antonia_15, Freya_15, Haleema_15, RedMaple_15, Mosaic_15, SassyCat97_15, Soto_16, Weher20_16, Serpentine_0016, CamL_16, Soile_16, TomBombadil_16, Dati_16, KlimbOn_16, Duggie_15, Kailash_16, Lulumae_15, Haimas_16, Chaelin_15, Jillium_15, DoesntMatter_16, Scrick_15, TyrionL_15, Trypo_16, PhenghisKhan_15, Xavier_15, Boehler_16, Mulan_15, Vista_16, Windsor_15, Charles1_16, Brilliant_16, ProfessorX_16, Emiris_16, Daka_16, Sophia_15, Skippy_16, Veritas_15, Cobra_16, Magic8_16, QueenBeane_16, Kahve_15, Telesworld_15, Zonia_16, True_15, HighStump_15, Timmi_15, MitKao_16, Roy17_16, YouGoGlencoco_16, Grand2040_15, Riggan_16, Solosis_15, FriarPreacher_16, Omniscient_16, Mutante_15, KingTut_15, Surely_16, Keitherie_16, PhrankReynolds_15, Vaticameos_16, Kloppinator_16, PhatCats2014_16, Aelin_15, Phunky_16, PinheadLarry_16
- Track 4 : Carthage_15
- Track 5 : Indlovu_16

- Track 6 : LilMcDreamy_16
- Track 7 : BobbyK_16, Apex_16, Prince_17, Frederick_16
- Track 8 : Heath_16, Hydro_16, Hangman_16, VioletZ_16, Waleliano_16
- Track 9 : Poster_15, ChrisnMich_15, Ahwei_15
- Track 10 : Nigel_14
- Track 11 : Fortunato_16, Magpie_16, Mudslide_16, Austelle_17, Mithril_16, Lolalove_16, BrownCNA_17
- Track 12 : RawrgerThat_16, Zemanar_17
- Track 13 : JAMaL_16, Stinger_14
- Track 14 : JaguarMi_17
- Track 15 : Cooper_16
- Track 16 : Nanao_15
- Track 17 : Vincenzo_17
- Track 18 : Serendipitous_17
- Track 19 : Saguaro_18
- Track 20 : Thonko_17
- Track 21 : Knocker_20
- Track 22 : PenguinLover67_19
- Track 23 : CassieYates_30, Angel_30, BruceB_30, Coleslaw_30, GoldenAsh_30, Jonghyun_30, Halo_30, Annihilator_30, BPs_30, Kareem_30, Frosty24_30, ShaboiShabazz_30, Cherrybomb426_30, TomBrady_30, LouisV14_30, Plagueis_30, Aroostook_30, Jolene_30, Sneeze_30, Jane_30, Peeb_30, Zombie_30, Rabbs_30, Chance64_30, Remy19_30, Mowgli_30, DMoney_30, Marmie_30, OctaviousRex_30, Renaissance_30, JorRay_30, Gideon_30, Phreak_30, Liefie_30, BQuat_30, Periodt_30, Schiebel_30, Sizemore_30, Hope_30, Avrafan_30, PinkYoshi_30, Darionha_30, Gomashi_30
- Track 24 : Paito_30
- Track 25 : FlagStaff_29, Pace1224_29
- Track 26 : Avocado_29
- Track 27 : Cambiare_30
- Track 28 : MOOREtheMARYer_31, Pinnie_31
- Track 29 : Mercurio_32
- Track 30 : Lemuria_31
- Track 31 : Jolie2_30
- Track 32 : Stargaze_30
- Track 33 : Antsirabe_30
- Track 34 : Hadrien_35, Giles_34, Dewey_34, Forge_34, LilHazelNut_35, Hail_34, Gravaiilia_34, HH92_34, Wishmaker_34, Evanesce_34, DeepSoil15_35, Amymech_35, Daegal_36, Amochick_35, Kinbote_35, Gancho_34, Ubuntu_35, Webster2_35, Ein37_35, OBUpride_35, Luke_35, Luna22_34

Summary of Final Annotations (See graph section above for start numbers):

The start number called the most often in the published annotations is 14, it was called in 228 of the 287 non-draft genes in the pham.

Genes that call this "Most Annotated" start:

- AbsoluteMadLad_15, Adriana_16, Aelin_15, AltPhacts_16, Altwerkus_15, Amochick_35, Amymech_35, Antonia_15, Austelle_17, Beaglebox_15, Bishoperium_15, BlackStallion_16, BlueHusk_16, Bluephacebaby_15, Boehler_16,

Brilliant_16, BrownCNA_17, Buckeye_16, Burr_15, CamL_16, CampRoach_16, Cannibal_16, Carthage_15, Chaelin_15, Charles1_16, CharlieGBrown_15, CheetO_16, Cher_15, Childish_15, Chorkpop_16, Chunky_16, Cobra_16, Cosmolli16_15, Craff_16, Crownjwl_16, DaddyDaniels_16, Daegal_36, Daka_16, Dati_16, DeepSoil15_35, Derpp_15, Dewey_34, Dingo_16, Dione_15, DirtJuice_16, DoesntMatter_16, DonSanchon_15, Duggie_15, Durga_16, Ein37_35, Emiris_16, EmpTee_16, Evanesce_34, Forge_34, Fortunato_16, Fozzie_15, Frankicide_16, Freya_15, FriarPreacher_16, Fringe_16, FugateOSU_15, Gancho_34, Gareth_15, GeneCoco_16, Giles_34, Giraffe_16, Grand2040_15, Gravaiilia_34, Gyarad_0016, HH92_34, HSavage_16, Hadrien_35, Hail_34, Haimas_16, Haleema_15, Hangman_16, Hartsy_16, Heath_16, Held_16, HenryJackson_15, Hertubise_16, Hetaeria_16, HighStump_15, Hocus_15, Horchata_16, Hydro_16, Inchworm_16, Indlovu_16, JAMaL_16, JacAttac_16, JakeO_15, JangoPhett_16, Jillium_15, Jiminy_15, Kahve_15, Kailash_16, Keitherie_16, Kimbrough_16, Kinbote_35, KingTut_15, KingVeVeVe_16, KlimbOn_16, Kloppinator_16, Knocker_20, Kwadwo_15, Kwksand96_15, Labeouficaum_15, LasagnaCat_16, LeeLot_16, Lego3393_16, Legolas_15, LemonSlice_16, LilHazelnut_35, LilMcDreamy_16, Lolalove_16, LostAndPhound_15, LuckyMarjie_15, Luke_35, Lulumae_15, Lulwa_16, Lumine_15, Luna22_34, MRabcd_15, Mag7_15, Magic8_16, Magpie_16, Maru_15, Mcshane_15, Mecca_15, Melc17_16, Mesh1_16, MichaelPhcott_15, Mikota_16, MiniBoss_16, MitKao_16, Mithril_16, Morty_16, Mosaic_15, Mudslide_16, Mulan_15, Mutante_15, Nacho_0016, Nicole21_16, OBUpride_35, Oline_15, Omniscient_16, PenguinLover67_19, Phamished_16, Phareon_16, PhatCats2014_16, PhenghisKhan_15, Pherdinand_16, Phergie_15, Phleuron_15, PhrankReynolds_15, PhrodoBaggins_15, Phunky_16, Piglet_0015, PinheadLarry_16, Pipsqueak_16, Placalicious_15, Plmatters_16, Podrick_16, ProfessorX_16, QueenBeane_16, Quisquiliae_16, RedMaple_15, Riggan_16, Robyn_15, Roliet_16, Roscoe_17, Roy17_16, SDcharge11_16, Saguario_18, Samaymay_16, SassyCat97_15, Schadenfreude_15, Scrick_15, Serendipitous_17, Serpentine_0016, Sheila_16, ShiVal_16, Simielle_15, Skippy_16, Slatt_16, Soile_16, Solosis_15, Sophia_15, Soto_16, Spartan300_16, Squid_16, Squiggle_16, Stinger_14, Struggle_15, Surely_16, Telesworld_15, Thonko_17, Timmi_15, TomBombadil_16, Tomlarah_16, Toni_15, Tooj_16, True_15, Trypo_16, TyrionL_15, UAch1_16, Ubuntu_35, Usavi_16, Valjean_16, Vaticameos_16, Veritas_15, Vincenzo_17, VioletZ_16, Virapocalypse_16, Vista_16, Vivaldi_16, Waleliano_16, Wallhey_15, Waterdiva_16, Webster2_35, Weher20_16, Windsor_15, Wishmaker_34, Xavier_15, YouGoGlencoco_16, Zaider_17, Zelda_16, Zonia_16,

Genes that have the "Most Annotated" start but do not call it:

- Ahwei_15, Apex_16, BobbyK_16, ChrisnMich_15, Cooper_16, Frederick_16, JaguarMi_17, Nigel_14, Poster_15, Prince_17, RawrgerThat_16, Zemanar_17,

Genes that do not have the "Most Annotated" start:

- Angel_30, Annihilator_30, Antsirabe_30, Aroostook_30, Avocado_29, Avrafan_30, BPs_30, BQuat_30, BruceB_30, Cambiare_30, CassieYates_30, Chance64_30, Cherrybomb426_30, Coleslaw_30, DMoney_30, Darionha_30, FlagStaff_29, Frosty24_30, Gideon_30, GoldenAsh_30, Gomashi_30, Halo_30, Hope_30, Jane_30, Jolene_30, Jolie2_30, Jonghyun_30, JorRay_30, Kareem_30, Lemuria_31, Liefie_30, LouisV14_30, MOOREtheMARYer_31, Marmie_30, Mercurio_32, Mowgli_30, Nanao_15, OctaviousRex_30, Pace1224_29, Paito_30, Peeb_30, Periodt_30, Phreak_30, PinkYoshi_30, Pinnie_31, Plagueis_30, Rabbs_30, Remy19_30, Renaissance_30, Schiebel_30, ShaboiShabazz_30, Sizemore_30, Sneeze_30, Stargaze_30, TomBrady_30, Weirido19_31, Zombie_30,

Summary by start number:

Start 14:

- Found in 240 of 297 (80.8%) of genes in pham
- Manual Annotations of this start: 228 of 287
- Called 95.0% of time when present
- Phage (with cluster) where this start called: AbsoluteMadLad_15 (B1), Adriana_16 (B1), Aelin_15 (B1), AltPhacts_16 (B1), Altwerkus_15 (B1), Amochick_35 (Q), Amymech_35 (Q), Antonia_15 (B1), Austelle_17 (B4), Beaglebox_15 (B1), Bishoperium_15 (B1), BlackStallion_16 (B1), BlueHusk_16 (B1), Bluephacebaby_15 (B1), Boehler_16 (B1), Brilliant_16 (B1), BrownCNA_17 (B4), Buckeye_16 (B1), Burr_15 (B1), CamL_16 (B1), CampRoach_16 (B1), Cannibal_16 (B1), Carthage_15 (B1), Chaelin_15 (B1), Charles1_16 (B1), CharlieGBrown_15 (B1), CheetO_16 (B1), Cher_15 (B1), Childish_15 (B1), Chorkpop_16 (B1), Chunky_16 (B1), Cobra_16 (B1), Cosmolli16_15 (B1), Craff_16 (B1), Crownjwl_16 (B1), DaddyDaniels_16 (B1), Daegal_36 (Q), Daka_16 (B1), Dati_16 (B1), DeepSoil15_35 (Q), Derpp_15 (B1), Dewey_34 (Q), Dingo_16 (B1), Dione_15 (B1), DirtJuice_16 (B1), DoesntMatter_16 (B1), DonSanchon_15 (B1), Duggie_15 (B1), Durga_16 (B1), Ein37_35 (Q), Emiris_16 (B1), EmpTee_16 (B1), Evanesce_34 (Q), Forge_34 (Q), Fortunato_16 (B4), Fozzie_15 (B1), Frankicide_16 (B1), Freya_15 (B1), FriarPreacher_16 (B1), Fringe_16 (B1), FugateOSU_15 (B1), Gancho_34 (Q), Gareth_15 (B1), GeneCoco_16 (B1), Giles_34 (Q), Giraffe_16 (B1), Grand2040_15 (B1), Gravaiilia_34 (Q), Gyarad_0016 (B1), HH92_34 (Q), HSavage_16 (B1), Hadrien_35 (Q), Hail_34 (Q), Haimas_16 (B1), Haleema_15 (B1), Hangman_16 (B4), Hartsy_16 (B1), Heath_16 (B4), Held_16 (B1), HenryJackson_15 (B1), Hertubise_16 (B1), Hetaeria_16 (B1), HighStump_15 (B1), Hocus_15 (B1), Horchata_16 (B1), Hydro_16 (B4), Inchworm_16 (B1), Indlovu_16 (B11), JAMaL_16 (B4), JacAttac_16 (B1), JakeO_15 (B1), JangoPhett_16 (B1), Jillium_15 (B1), Jiminy_15 (B1), Kahve_15 (B1), Kailash_16 (B1), Keitherie_16 (B1), Kimbrough_16 (B1), Kinbote_35 (Q), KingTut_15 (B1), KingVeVeVe_16 (B1), KlimbOn_16 (B1), Kloppinator_16 (B1), Knocker_20 (B9), Kwadwo_15 (B1), Kwksand96_15 (B1), Labeouficaum_15 (B1), LasagnaCat_16 (B1), LeeLot_16 (B1), Lego3393_16 (B1), Legolas_15 (B1), LemonSlice_16 (B1), LilHazelNut_35 (Q), LilMcDreamy_16 (B12), Lolalove_16 (B4), LostAndPhound_15 (B1), LuckyMarjie_15 (B1), Luke_35 (Q), Lulumae_15 (B1), Lulwa_16 (B1), Lumine_15 (B1), Luna22_34 (Q), MRabcd_15 (B1), Mag7_15 (B1), Magic8_16 (B1), Magpie_16 (B4), Maru_15 (B1), Mcshane_15 (B1), Mecca_15 (B1), Melc17_16 (B1), Mesh1_16 (B1), MichaelPhcott_15 (B1), Mikota_16 (B1), MiniBoss_16 (B1), MitKao_16 (B1), Mithril_16 (B4), Morty_16 (B1), Mosaic_15 (B1), Mudslide_16 (B4), Mulan_15 (B1), Mutante_15 (B1), Nacho_0016 (B1), Nicole21_16 (B1), OBUpriide_35 (Q), Oline_15 (B1), Omniscient_16 (B1), PenguinLover67_19 (B9), Phamished_16 (B1), Phareon_16 (B1), PhatCats2014_16 (B1), PhenghisKhan_15 (B1), Pherdinand_16 (B1), Phergie_15 (B1), Phleuron_15 (B1), PhrankReynolds_15 (B1), PhrodoBaggins_15 (B1), Phunky_16 (B1), Piglet_0015 (B1), PinheadLarry_16 (B1), Pipsqueak_16 (B1), Placalicious_15 (B1), Plmatters_16 (B1), Podrick_16 (B1), ProfessorX_16 (B1), QueenBeane_16 (B1), Quisquiliae_16 (B1), RedMaple_15 (B1), Riggan_16 (B1), Robyn_15 (B1), Roliet_16 (B1), Roscoe_17 (B1), Roy17_16 (B1), SDcharge11_16 (B1), Saguaro_18 (B7), Samaymay_16 (B1), SassyCat97_15 (B1), Schadenfreude_15 (B1), Scrick_15 (B1), Serendipitous_17 (B5), Serpentine_0016 (B1), Sheila_16 (B1), ShiVal_16 (B1), Simielle_15 (B1), Skippy_16 (B1), Slatt_16 (B1), Soile_16 (B1), Solosis_15 (B1), Sophia_15 (B1), Soto_16 (B1), Spartan300_16 (B1), Squid_16 (B1), Squiggle_16 (B1), Stinger_14 (B4), Struggle_15 (B1), Surely_16 (B1), Telesworld_15 (B1),

Thonko_17 (B8), Timmi_15 (B1), TomBombadil_16 (B1), Tomlarah_16 (B1), Toni_15 (B1), Tooj_16 (B1), True_15 (B1), Trypo_16 (B1), TyrionL_15 (B1), UAch1_16 (B1), Ubuntu_35 (Q), Usavi_16 (B1), Valjean_16 (B1), Vaticameos_16 (B1), Veritas_15 (B1), Vincenzo_17 (B4), VioletZ_16 (B4), Virapocalypse_16 (B1), Vista_16 (B1), Vivaldi_16 (B1), Waleliano_16 (B4), Wallhey_15 (B1), Waterdiva_16 (B1), Webster2_35 (Q), Weher20_16 (B1), Windsor_15 (B1), Wishmaker_34 (Q), Xavier_15 (B1), YouGoGlencoco_16 (B1), Zaider_17 (B1), Zelda_16 (B1), Zonia_16 (B1),

Start 15:

- Found in 56 of 297 (18.9%) of genes in pham
- Manual Annotations of this start: 52 of 287
- Called 100.0% of time when present
- Phage (with cluster) where this start called: Angel_30 (G1), Annihilator_30 (G1), Antsirabe_30 (G5), Aroostook_30 (G1), Avocado_29 (G2), Avrafan_30 (G1), BPs_30 (G1), BQuat_30 (G1), BruceB_30 (G1), Cambiare_30 (G2), CassieYates_30 (G1), Chance64_30 (G1), Cherrybomb426_30 (G1), Coleslaw_30 (G1), DMoney_30 (G1), Darionha_30 (G1), FlagStaff_29 (G2), Frosty24_30 (G1), Gideon_30 (G1), GoldenAsh_30 (G1), Gomashi_30 (G1), Halo_30 (G1), Hope_30 (G1), Jane_30 (G1), Jolene_30 (G1), Jolie2_30 (G4), Jonghyun_30 (G1), JorRay_30 (G1), Kareem_30 (G1), Lemuria_31 (G4), Liefie_30 (G1), LouisV14_30 (G1), MOOREtheMARYer_31 (G3), Marmie_30 (G1), Mercurio_32 (G4), Mowgli_30 (G1), OctaviousRex_30 (G1), Pace1224_29 (G2), Paito_30 (G1), Peeb_30 (G1), Periodt_30 (G1), Phreak_30 (G1), PinkYoshi_30 (G1), Pinnie_31 (G3), Plagueis_30 (G1), Rabbs_30 (G1), Remy19_30 (G1), Renaissance_30 (G1), Schiebel_30 (G1), ShaboiShabazz_30 (G1), Sizemore_30 (G1), Sneeze_30 (G1), Stargaze_30 (G5), TomBrady_30 (G1), Weirdo19_31 (AH), Zombie_30 (G1),

Start 17:

- Found in 215 of 297 (72.4%) of genes in pham
- Manual Annotations of this start: 7 of 287
- Called 6.0% of time when present
- Phage (with cluster) where this start called: Ahwei_15 (B4), Apex_16 (B4), BobbyK_16 (B4), ChrisnMich_15 (B4), Cooper_16 (B4), Frederick_16 (B4), JaguarMi_17 (B4), Nanao_15 (B4), Nigel_14 (B4), Poster_15 (B4), Prince_17 (B4), RawrgerThat_16 (B4), Zemanar_17 (B4),

Summary by clusters:

There are 15 clusters represented in this pham: Q, G5, G4, G3, G2, G1, AH, B4, B5, B7, B12, B1, B11, B8, B9,

Info for manual annotations of cluster B1:

- Start number 14 was manually annotated 184 times for cluster B1.

Info for manual annotations of cluster B11:

- Start number 14 was manually annotated 1 time for cluster B11.

Info for manual annotations of cluster B12:

- Start number 14 was manually annotated 1 time for cluster B12.

Info for manual annotations of cluster B4:

- Start number 14 was manually annotated 15 times for cluster B4.
- Start number 17 was manually annotated 7 times for cluster B4.

Info for manual annotations of cluster B5:

- Start number 14 was manually annotated 1 time for cluster B5.

Info for manual annotations of cluster B7:

- Start number 14 was manually annotated 1 time for cluster B7.

Info for manual annotations of cluster B8:

- Start number 14 was manually annotated 1 time for cluster B8.

Info for manual annotations of cluster B9:

- Start number 14 was manually annotated 2 times for cluster B9.

Info for manual annotations of cluster G1:

- Start number 15 was manually annotated 44 times for cluster G1.

Info for manual annotations of cluster G2:

- Start number 15 was manually annotated 3 times for cluster G2.

Info for manual annotations of cluster G3:

- Start number 15 was manually annotated 2 times for cluster G3.

Info for manual annotations of cluster G4:

- Start number 15 was manually annotated 2 times for cluster G4.

Info for manual annotations of cluster G5:

- Start number 15 was manually annotated 1 time for cluster G5.

Info for manual annotations of cluster Q:

- Start number 14 was manually annotated 22 times for cluster Q.

Gene Information:

Gene: AbsoluteMadLad_15 Start: 13646, Stop: 13996, Start Num: 14

Candidate Starts for AbsoluteMadLad_15:

(Start: 14 @13646 has 228 MA's), (Start: 17 @13697 has 7 MA's), (19, 13709), (20, 13712), (22, 13721), (27, 13742), (48, 13937),

Gene: Adriana_16 Start: 13644, Stop: 13994, Start Num: 14

Candidate Starts for Adriana_16:

(Start: 14 @13644 has 228 MA's), (Start: 17 @13695 has 7 MA's), (19, 13707), (20, 13710), (22, 13719), (27, 13740), (48, 13935),

Gene: Aelin_15 Start: 13209, Stop: 13559, Start Num: 14

Candidate Starts for Aelin_15:

(Start: 14 @13209 has 228 MA's), (Start: 17 @13260 has 7 MA's), (19, 13272), (20, 13275), (22, 13284), (27, 13305), (48, 13500),

Gene: Ahwei_15 Start: 14361, Stop: 14681, Start Num: 17

Candidate Starts for Ahwei_15:

(1, 13947), (Start: 14 @14310 has 228 MA's), (Start: 17 @14361 has 7 MA's), (19, 14373), (22, 14385), (26, 14403), (33, 14448), (42, 14559),

Gene: AltPhacts_16 Start: 13639, Stop: 13989, Start Num: 14

Candidate Starts for AltPhacts_16:

(Start: 14 @13639 has 228 MA's), (Start: 17 @13690 has 7 MA's), (19, 13702), (20, 13705), (22, 13714), (27, 13735), (48, 13930),

Gene: Altwerkus_15 Start: 13339, Stop: 13689, Start Num: 14

Candidate Starts for Altwerkus_15:

(Start: 14 @13339 has 228 MA's), (Start: 17 @13390 has 7 MA's), (19, 13402), (20, 13405), (22, 13414), (27, 13435), (48, 13630),

Gene: Amochick_35 Start: 30022, Stop: 30342, Start Num: 14

Candidate Starts for Amochick_35:

(Start: 14 @30022 has 228 MA's), (23, 30100), (26, 30115), (28, 30127), (31, 30157), (33, 30166), (37, 30202), (41, 30235), (47, 30289),

Gene: Amymech_35 Start: 30016, Stop: 30336, Start Num: 14

Candidate Starts for Amymech_35:

(Start: 14 @30016 has 228 MA's), (23, 30094), (26, 30109), (28, 30121), (31, 30151), (33, 30160), (37, 30196), (41, 30229), (47, 30283),

Gene: Angel_30 Start: 26790, Stop: 27110, Start Num: 15

Candidate Starts for Angel_30:

(Start: 15 @26790 has 52 MA's), (20, 26853), (23, 26865), (25, 26871), (26, 26880), (29, 26895), (31, 26916), (32, 26919), (34, 26934), (36, 26949), (37, 26961), (45, 27039), (51, 27099),

Gene: Annihilator_30 Start: 26781, Stop: 27101, Start Num: 15

Candidate Starts for Annihilator_30:

(Start: 15 @26781 has 52 MA's), (20, 26844), (23, 26856), (25, 26862), (26, 26871), (29, 26886), (31, 26907), (32, 26910), (34, 26925), (36, 26940), (37, 26952), (45, 27030), (51, 27090),

Gene: Antonia_15 Start: 13209, Stop: 13559, Start Num: 14

Candidate Starts for Antonia_15:

(Start: 14 @13209 has 228 MA's), (Start: 17 @13260 has 7 MA's), (19, 13272), (20, 13275), (22, 13284), (27, 13305), (48, 13500),

Gene: Antsirabe_30 Start: 28475, Stop: 28837, Start Num: 15

Candidate Starts for Antsirabe_30:

(12, 28415), (Start: 15 @28475 has 52 MA's), (24, 28553), (29, 28580), (31, 28601), (32, 28604), (39, 28691),

Gene: Apex_16 Start: 15606, Stop: 15926, Start Num: 17

Candidate Starts for Apex_16:

(Start: 14 @15555 has 228 MA's), (Start: 17 @15606 has 7 MA's), (19, 15618), (20, 15621), (22, 15630), (26, 15648), (42, 15804),

Gene: Aroostook_30 Start: 26790, Stop: 27110, Start Num: 15

Candidate Starts for Aroostook_30:

(Start: 15 @26790 has 52 MA's), (20, 26853), (23, 26865), (25, 26871), (26, 26880), (29, 26895), (31, 26916), (32, 26919), (34, 26934), (36, 26949), (37, 26961), (45, 27039), (51, 27099),

Gene: Austelle_17 Start: 16011, Stop: 16382, Start Num: 14

Candidate Starts for Austelle_17:

(Start: 14 @16011 has 228 MA's), (Start: 17 @16062 has 7 MA's), (19, 16074), (20, 16077), (22, 16086), (26, 16104), (42, 16260),

Gene: Avocado_29 Start: 28477, Stop: 28833, Start Num: 15

Candidate Starts for Avocado_29:

(6, 28282), (Start: 15 @28477 has 52 MA's), (18, 28528), (24, 28555), (26, 28567), (31, 28603), (32, 28606), (39, 28693), (44, 28729), (46, 28753),

Gene: Avrafan_30 Start: 26790, Stop: 27110, Start Num: 15

Candidate Starts for Avrafan_30:

(Start: 15 @26790 has 52 MA's), (20, 26853), (23, 26865), (25, 26871), (26, 26880), (29, 26895), (31, 26916), (32, 26919), (34, 26934), (36, 26949), (37, 26961), (45, 27039), (51, 27099),

Gene: BPs_30 Start: 26790, Stop: 27110, Start Num: 15

Candidate Starts for BPs_30:

(Start: 15 @26790 has 52 MA's), (20, 26853), (23, 26865), (25, 26871), (26, 26880), (29, 26895), (31, 26916), (32, 26919), (34, 26934), (36, 26949), (37, 26961), (45, 27039), (51, 27099),

Gene: BQuat_30 Start: 26781, Stop: 27101, Start Num: 15

Candidate Starts for BQuat_30:

(Start: 15 @26781 has 52 MA's), (20, 26844), (23, 26856), (25, 26862), (26, 26871), (29, 26886), (31, 26907), (32, 26910), (34, 26925), (36, 26940), (37, 26952), (45, 27030), (51, 27090),

Gene: Beaglebox_15 Start: 13363, Stop: 13713, Start Num: 14

Candidate Starts for Beaglebox_15:

(Start: 14 @13363 has 228 MA's), (Start: 17 @13414 has 7 MA's), (19, 13426), (20, 13429), (22, 13438), (27, 13459), (48, 13654),

Gene: Bishoperium_15 Start: 13352, Stop: 13702, Start Num: 14

Candidate Starts for Bishoperium_15:

(Start: 14 @13352 has 228 MA's), (Start: 17 @13403 has 7 MA's), (19, 13415), (20, 13418), (22, 13427), (27, 13448), (48, 13643),

Gene: BlackStallion_16 Start: 13654, Stop: 14004, Start Num: 14

Candidate Starts for BlackStallion_16:

(Start: 14 @13654 has 228 MA's), (Start: 17 @13705 has 7 MA's), (19, 13717), (20, 13720), (22, 13729), (27, 13750), (48, 13945),

Gene: BlueHusk_16 Start: 13635, Stop: 13985, Start Num: 14

Candidate Starts for BlueHusk_16:

(Start: 14 @13635 has 228 MA's), (Start: 17 @13686 has 7 MA's), (20, 13701), (22, 13710), (27, 13731), (48, 13926),

Gene: Bluephacebaby_15 Start: 13352, Stop: 13702, Start Num: 14

Candidate Starts for Bluephacebaby_15:

(Start: 14 @13352 has 228 MA's), (Start: 17 @13403 has 7 MA's), (19, 13415), (20, 13418), (22, 13427), (27, 13448), (48, 13643),

Gene: BobbyK_16 Start: 15425, Stop: 15745, Start Num: 17

Candidate Starts for BobbyK_16:

(Start: 14 @15374 has 228 MA's), (Start: 17 @15425 has 7 MA's), (19, 15437), (20, 15440), (22, 15449), (26, 15467), (42, 15623),

Gene: Boehler_16 Start: 13662, Stop: 14012, Start Num: 14

Candidate Starts for Boehler_16:

(Start: 14 @13662 has 228 MA's), (Start: 17 @13713 has 7 MA's), (19, 13725), (20, 13728), (22, 13737), (27, 13758), (48, 13953),

Gene: Brilliant_16 Start: 13356, Stop: 13706, Start Num: 14

Candidate Starts for Brilliant_16:

(Start: 14 @13356 has 228 MA's), (Start: 17 @13407 has 7 MA's), (19, 13419), (20, 13422), (22, 13431), (27, 13452), (48, 13647),

Gene: BrownCNA_17 Start: 15628, Stop: 15999, Start Num: 14

Candidate Starts for BrownCNA_17:

(Start: 14 @15628 has 228 MA's), (Start: 17 @15679 has 7 MA's), (19, 15691), (20, 15694), (22, 15703), (26, 15721), (42, 15877),

Gene: BruceB_30 Start: 26790, Stop: 27110, Start Num: 15

Candidate Starts for BruceB_30:

(Start: 15 @26790 has 52 MA's), (20, 26853), (23, 26865), (25, 26871), (26, 26880), (29, 26895), (31, 26916), (32, 26919), (34, 26934), (36, 26949), (37, 26961), (45, 27039), (51, 27099),

Gene: Buckeye_16 Start: 13670, Stop: 14020, Start Num: 14

Candidate Starts for Buckeye_16:

(Start: 14 @13670 has 228 MA's), (Start: 17 @13721 has 7 MA's), (19, 13733), (20, 13736), (22, 13745), (27, 13766), (48, 13961),

Gene: Burr_15 Start: 13352, Stop: 13702, Start Num: 14

Candidate Starts for Burr_15:

(Start: 14 @13352 has 228 MA's), (Start: 17 @13403 has 7 MA's), (19, 13415), (20, 13418), (22, 13427), (27, 13448), (48, 13643),

Gene: CamL_16 Start: 13650, Stop: 14000, Start Num: 14

Candidate Starts for CamL_16:

(Start: 14 @13650 has 228 MA's), (Start: 17 @13701 has 7 MA's), (19, 13713), (20, 13716), (22, 13725), (27, 13746), (48, 13941),

Gene: Cambiare_30 Start: 28945, Stop: 29301, Start Num: 15

Candidate Starts for Cambiare_30:

(4, 28708), (Start: 15 @28945 has 52 MA's), (18, 28996), (24, 29023), (26, 29035), (31, 29071), (32, 29074), (39, 29161), (44, 29197), (46, 29221),

Gene: CampRoach_16 Start: 13641, Stop: 13991, Start Num: 14

Candidate Starts for CampRoach_16:

(Start: 14 @13641 has 228 MA's), (Start: 17 @13692 has 7 MA's), (19, 13704), (20, 13707), (22, 13716), (27, 13737), (48, 13932),

Gene: Cannibal_16 Start: 13635, Stop: 13985, Start Num: 14

Candidate Starts for Cannibal_16:

(Start: 14 @13635 has 228 MA's), (Start: 17 @13686 has 7 MA's), (19, 13698), (20, 13701), (22, 13710), (27, 13731), (48, 13926),

Gene: Carthage_15 Start: 13313, Stop: 13663, Start Num: 14

Candidate Starts for Carthage_15:

(Start: 14 @13313 has 228 MA's), (Start: 17 @13364 has 7 MA's), (19, 13376), (20, 13379), (22, 13388), (27, 13409), (33, 13451), (48, 13604),

Gene: CassieYates_30 Start: 26790, Stop: 27110, Start Num: 15

Candidate Starts for CassieYates_30:

(Start: 15 @26790 has 52 MA's), (20, 26853), (23, 26865), (25, 26871), (26, 26880), (29, 26895), (31, 26916), (32, 26919), (34, 26934), (36, 26949), (37, 26961), (45, 27039), (51, 27099),

Gene: Chaelin_15 Start: 13317, Stop: 13667, Start Num: 14

Candidate Starts for Chaelin_15:

(Start: 14 @13317 has 228 MA's), (Start: 17 @13368 has 7 MA's), (19, 13380), (20, 13383), (22, 13392), (27, 13413), (48, 13608),

Gene: Chance64_30 Start: 26790, Stop: 27110, Start Num: 15

Candidate Starts for Chance64_30:

(Start: 15 @26790 has 52 MA's), (20, 26853), (23, 26865), (25, 26871), (26, 26880), (29, 26895), (31, 26916), (32, 26919), (34, 26934), (36, 26949), (37, 26961), (45, 27039), (51, 27099),

Gene: Charles1_16 Start: 13632, Stop: 13982, Start Num: 14

Candidate Starts for Charles1_16:

(Start: 14 @13632 has 228 MA's), (Start: 17 @13683 has 7 MA's), (19, 13695), (20, 13698), (22, 13707), (27, 13728), (48, 13923),

Gene: CharlieGBrown_15 Start: 13221, Stop: 13571, Start Num: 14

Candidate Starts for CharlieGBrown_15:

(Start: 14 @13221 has 228 MA's), (Start: 17 @13272 has 7 MA's), (19, 13284), (20, 13287), (22, 13296), (27, 13317), (48, 13512),

Gene: CheetO_16 Start: 13650, Stop: 14000, Start Num: 14

Candidate Starts for CheetO_16:

(Start: 14 @13650 has 228 MA's), (Start: 17 @13701 has 7 MA's), (19, 13713), (20, 13716), (22, 13725), (27, 13746), (48, 13941),

Gene: Cher_15 Start: 13375, Stop: 13725, Start Num: 14

Candidate Starts for Cher_15:

(Start: 14 @13375 has 228 MA's), (Start: 17 @13426 has 7 MA's), (19, 13438), (20, 13441), (22, 13450), (27, 13471), (48, 13666),

Gene: Cherrybomb426_30 Start: 26790, Stop: 27110, Start Num: 15

Candidate Starts for Cherrybomb426_30:

(Start: 15 @26790 has 52 MA's), (20, 26853), (23, 26865), (25, 26871), (26, 26880), (29, 26895), (31, 26916), (32, 26919), (34, 26934), (36, 26949), (37, 26961), (45, 27039), (51, 27099),

Gene: Childish_15 Start: 13363, Stop: 13713, Start Num: 14

Candidate Starts for Childish_15:

(Start: 14 @13363 has 228 MA's), (Start: 17 @13414 has 7 MA's), (19, 13426), (20, 13429), (22, 13438), (27, 13459), (48, 13654),

Gene: Chorkpop_16 Start: 13375, Stop: 13725, Start Num: 14

Candidate Starts for Chorkpop_16:

(Start: 14 @13375 has 228 MA's), (Start: 17 @13426 has 7 MA's), (19, 13438), (20, 13441), (22, 13450), (27, 13471), (48, 13666),

Gene: ChrisnMich_15 Start: 14361, Stop: 14681, Start Num: 17

Candidate Starts for ChrisnMich_15:

(1, 13947), (Start: 14 @14310 has 228 MA's), (Start: 17 @14361 has 7 MA's), (19, 14373), (22, 14385), (26, 14403), (33, 14448), (42, 14559),

Gene: Chunky_16 Start: 13662, Stop: 14012, Start Num: 14

Candidate Starts for Chunky_16:

(Start: 14 @13662 has 228 MA's), (Start: 17 @13713 has 7 MA's), (20, 13728), (22, 13737), (27, 13758), (48, 13953),

Gene: Cobra_16 Start: 13653, Stop: 14003, Start Num: 14

Candidate Starts for Cobra_16:

(Start: 14 @13653 has 228 MA's), (Start: 17 @13704 has 7 MA's), (19, 13716), (20, 13719), (22, 13728), (27, 13749), (48, 13944),

Gene: Coleslaw_30 Start: 26781, Stop: 27101, Start Num: 15

Candidate Starts for Coleslaw_30:

(Start: 15 @26781 has 52 MA's), (20, 26844), (23, 26856), (25, 26862), (26, 26871), (29, 26886), (31, 26907), (32, 26910), (34, 26925), (36, 26940), (37, 26952), (45, 27030), (51, 27090),

Gene: Cooper_16 Start: 14469, Stop: 14792, Start Num: 17

Candidate Starts for Cooper_16:

(Start: 14 @14418 has 228 MA's), (Start: 17 @14469 has 7 MA's), (19, 14481), (26, 14511), (42, 14667), (46, 14703),

Gene: Cosmolli16_15 Start: 13367, Stop: 13717, Start Num: 14

Candidate Starts for Cosmolli16_15:

(Start: 14 @13367 has 228 MA's), (Start: 17 @13418 has 7 MA's), (19, 13430), (20, 13433), (22, 13442), (27, 13463), (48, 13658),

Gene: Craff_16 Start: 13656, Stop: 14006, Start Num: 14

Candidate Starts for Craff_16:

(Start: 14 @13656 has 228 MA's), (Start: 17 @13707 has 7 MA's), (19, 13719), (20, 13722), (22, 13731), (27, 13752), (48, 13947),

Gene: Crownjwl_16 Start: 13423, Stop: 13773, Start Num: 14

Candidate Starts for Crownjwl_16:

(Start: 14 @13423 has 228 MA's), (Start: 17 @13474 has 7 MA's), (20, 13489), (22, 13498), (27, 13519), (48, 13714),

Gene: DMoney_30 Start: 26790, Stop: 27110, Start Num: 15

Candidate Starts for DMoney_30:

(Start: 15 @26790 has 52 MA's), (20, 26853), (23, 26865), (25, 26871), (26, 26880), (29, 26895), (31, 26916), (32, 26919), (34, 26934), (36, 26949), (37, 26961), (45, 27039), (51, 27099),

Gene: DaddyDaniels_16 Start: 13359, Stop: 13709, Start Num: 14

Candidate Starts for DaddyDaniels_16:

(Start: 14 @13359 has 228 MA's), (Start: 17 @13410 has 7 MA's), (19, 13422), (20, 13425), (22, 13434), (27, 13455), (48, 13650),

Gene: Daegal_36 Start: 30310, Stop: 30630, Start Num: 14

Candidate Starts for Daegal_36:

(Start: 14 @30310 has 228 MA's), (23, 30388), (26, 30403), (28, 30415), (31, 30445), (33, 30454), (37, 30490), (41, 30523), (47, 30577),

Gene: Daka_16 Start: 13653, Stop: 14003, Start Num: 14

Candidate Starts for Daka_16:

(Start: 14 @13653 has 228 MA's), (Start: 17 @13704 has 7 MA's), (19, 13716), (20, 13719), (22, 13728), (27, 13749), (48, 13944),

Gene: Darionha_30 Start: 26790, Stop: 27110, Start Num: 15

Candidate Starts for Darionha_30:

(Start: 15 @26790 has 52 MA's), (20, 26853), (23, 26865), (25, 26871), (26, 26880), (29, 26895), (31, 26916), (32, 26919), (34, 26934), (36, 26949), (37, 26961), (45, 27039), (51, 27099),

Gene: Dati_16 Start: 13363, Stop: 13713, Start Num: 14

Candidate Starts for Dati_16:

(Start: 14 @13363 has 228 MA's), (Start: 17 @13414 has 7 MA's), (19, 13426), (20, 13429), (22, 13438), (27, 13459), (48, 13654),

Gene: DeepSoil15_35 Start: 30016, Stop: 30336, Start Num: 14

Candidate Starts for DeepSoil15_35:

(Start: 14 @30016 has 228 MA's), (23, 30094), (26, 30109), (28, 30121), (31, 30151), (33, 30160), (37, 30196), (41, 30229), (47, 30283),

Gene: Derpp_15 Start: 13209, Stop: 13559, Start Num: 14

Candidate Starts for Derpp_15:

(Start: 14 @13209 has 228 MA's), (Start: 17 @13260 has 7 MA's), (19, 13272), (20, 13275), (22, 13284), (27, 13305), (48, 13500),

Gene: Dewey_34 Start: 30016, Stop: 30336, Start Num: 14

Candidate Starts for Dewey_34:

(Start: 14 @30016 has 228 MA's), (23, 30094), (26, 30109), (28, 30121), (31, 30151), (33, 30160), (37, 30196), (41, 30229), (47, 30283),

Gene: Dingo_16 Start: 13635, Stop: 13985, Start Num: 14

Candidate Starts for Dingo_16:

(Start: 14 @13635 has 228 MA's), (Start: 17 @13686 has 7 MA's), (20, 13701), (22, 13710), (27, 13731), (48, 13926),

Gene: Dione_15 Start: 13351, Stop: 13701, Start Num: 14

Candidate Starts for Dione_15:

(Start: 14 @13351 has 228 MA's), (Start: 17 @13402 has 7 MA's), (19, 13414), (20, 13417), (22, 13426), (27, 13447), (48, 13642),

Gene: DirtJuice_16 Start: 13638, Stop: 13988, Start Num: 14

Candidate Starts for DirtJuice_16:

(Start: 14 @13638 has 228 MA's), (Start: 17 @13689 has 7 MA's), (20, 13704), (22, 13713), (27, 13734), (48, 13929),

Gene: DoesntMatter_16 Start: 13632, Stop: 13982, Start Num: 14

Candidate Starts for DoesntMatter_16:

(Start: 14 @13632 has 228 MA's), (Start: 17 @13683 has 7 MA's), (19, 13695), (20, 13698), (22, 13707), (27, 13728), (48, 13923),

Gene: DonSanchon_15 Start: 13351, Stop: 13701, Start Num: 14

Candidate Starts for DonSanchon_15:

(Start: 14 @13351 has 228 MA's), (Start: 17 @13402 has 7 MA's), (19, 13414), (20, 13417), (22, 13426), (27, 13447), (48, 13642),

Gene: Duggie_15 Start: 13365, Stop: 13715, Start Num: 14

Candidate Starts for Duggie_15:

(Start: 14 @13365 has 228 MA's), (Start: 17 @13416 has 7 MA's), (19, 13428), (20, 13431), (22, 13440), (27, 13461), (48, 13656),

Gene: Durga_16 Start: 13664, Stop: 14014, Start Num: 14

Candidate Starts for Durga_16:

(Start: 14 @13664 has 228 MA's), (Start: 17 @13715 has 7 MA's), (19, 13727), (20, 13730), (22, 13739), (27, 13760), (48, 13955),

Gene: Ein37_35 Start: 30016, Stop: 30336, Start Num: 14

Candidate Starts for Ein37_35:

(Start: 14 @30016 has 228 MA's), (23, 30094), (26, 30109), (28, 30121), (31, 30151), (33, 30160), (37, 30196), (41, 30229), (47, 30283),

Gene: Emiris_16 Start: 13645, Stop: 13995, Start Num: 14

Candidate Starts for Emiris_16:

(Start: 14 @13645 has 228 MA's), (Start: 17 @13696 has 7 MA's), (19, 13708), (20, 13711), (22, 13720), (27, 13741), (48, 13936),

Gene: EmpTee_16 Start: 13651, Stop: 14001, Start Num: 14

Candidate Starts for EmpTee_16:

(Start: 14 @13651 has 228 MA's), (Start: 17 @13702 has 7 MA's), (19, 13714), (20, 13717), (22, 13726), (27, 13747), (48, 13942),

Gene: Evanesce_34 Start: 30016, Stop: 30336, Start Num: 14

Candidate Starts for Evanesce_34:

(Start: 14 @30016 has 228 MA's), (23, 30094), (26, 30109), (28, 30121), (31, 30151), (33, 30160), (37, 30196), (41, 30229), (47, 30283),

Gene: FlagStaff_29 Start: 28264, Stop: 28620, Start Num: 15

Candidate Starts for FlagStaff_29:

(Start: 15 @28264 has 52 MA's), (24, 28342), (26, 28354), (31, 28390), (32, 28393), (39, 28480), (44, 28516), (46, 28540), (52, 28597),

Gene: Forge_34 Start: 30016, Stop: 30336, Start Num: 14

Candidate Starts for Forge_34:

(Start: 14 @30016 has 228 MA's), (23, 30094), (26, 30109), (28, 30121), (31, 30151), (33, 30160), (37, 30196), (41, 30229), (47, 30283),

Gene: Fortunato_16 Start: 15368, Stop: 15739, Start Num: 14

Candidate Starts for Fortunato_16:

(Start: 14 @15368 has 228 MA's), (Start: 17 @15419 has 7 MA's), (19, 15431), (20, 15434), (22, 15443), (26, 15461), (42, 15617),

Gene: Fozzie_15 Start: 13660, Stop: 14010, Start Num: 14

Candidate Starts for Fozzie_15:

(Start: 14 @13660 has 228 MA's), (Start: 17 @13711 has 7 MA's), (19, 13723), (20, 13726), (22, 13735), (27, 13756), (48, 13951),

Gene: Frankicide_16 Start: 13652, Stop: 14002, Start Num: 14

Candidate Starts for Frankicide_16:

(Start: 14 @13652 has 228 MA's), (Start: 17 @13703 has 7 MA's), (19, 13715), (20, 13718), (22, 13727), (27, 13748), (48, 13943),

Gene: Frederick_16 Start: 15428, Stop: 15748, Start Num: 17

Candidate Starts for Frederick_16:

(Start: 14 @15377 has 228 MA's), (Start: 17 @15428 has 7 MA's), (19, 15440), (20, 15443), (22, 15452), (26, 15470), (42, 15626),

Gene: Freya_15 Start: 13346, Stop: 13696, Start Num: 14

Candidate Starts for Freya_15:

(Start: 14 @13346 has 228 MA's), (Start: 17 @13397 has 7 MA's), (19, 13409), (20, 13412), (22, 13421), (27, 13442), (48, 13637),

Gene: FriarPreacher_16 Start: 13671, Stop: 14021, Start Num: 14

Candidate Starts for FriarPreacher_16:

(Start: 14 @13671 has 228 MA's), (Start: 17 @13722 has 7 MA's), (19, 13734), (20, 13737), (22, 13746), (27, 13767), (48, 13962),

Gene: Fringe_16 Start: 13633, Stop: 13983, Start Num: 14

Candidate Starts for Fringe_16:

(Start: 14 @13633 has 228 MA's), (Start: 17 @13684 has 7 MA's), (19, 13696), (20, 13699), (22, 13708), (27, 13729), (48, 13924),

Gene: Frosty24_30 Start: 26790, Stop: 27110, Start Num: 15

Candidate Starts for Frosty24_30:

(Start: 15 @26790 has 52 MA's), (20, 26853), (23, 26865), (25, 26871), (26, 26880), (29, 26895), (31, 26916), (32, 26919), (34, 26934), (36, 26949), (37, 26961), (45, 27039), (51, 27099),

Gene: FugateOSU_15 Start: 13357, Stop: 13707, Start Num: 14

Candidate Starts for FugateOSU_15:

(Start: 14 @13357 has 228 MA's), (Start: 17 @13408 has 7 MA's), (19, 13420), (20, 13423), (22, 13432), (27, 13453), (48, 13648),

Gene: Gancho_34 Start: 29739, Stop: 30059, Start Num: 14

Candidate Starts for Gancho_34:

(Start: 14 @29739 has 228 MA's), (23, 29817), (26, 29832), (28, 29844), (31, 29874), (33, 29883), (37, 29919), (41, 29952), (47, 30006),

Gene: Gareth_15 Start: 13354, Stop: 13704, Start Num: 14

Candidate Starts for Gareth_15:

(Start: 14 @13354 has 228 MA's), (Start: 17 @13405 has 7 MA's), (19, 13417), (20, 13420), (22, 13429), (27, 13450), (48, 13645),

Gene: GeneCoco_16 Start: 13656, Stop: 14006, Start Num: 14

Candidate Starts for GeneCoco_16:

(Start: 14 @13656 has 228 MA's), (Start: 17 @13707 has 7 MA's), (19, 13719), (20, 13722), (22, 13731), (27, 13752), (48, 13947),

Gene: Gideon_30 Start: 26790, Stop: 27110, Start Num: 15

Candidate Starts for Gideon_30:

(Start: 15 @26790 has 52 MA's), (20, 26853), (23, 26865), (25, 26871), (26, 26880), (29, 26895), (31, 26916), (32, 26919), (34, 26934), (36, 26949), (37, 26961), (45, 27039), (51, 27099),

Gene: Giles_34 Start: 30016, Stop: 30336, Start Num: 14

Candidate Starts for Giles_34:

(Start: 14 @30016 has 228 MA's), (23, 30094), (26, 30109), (28, 30121), (31, 30151), (33, 30160), (37, 30196), (41, 30229), (47, 30283),

Gene: Giraffe_16 Start: 13358, Stop: 13708, Start Num: 14

Candidate Starts for Giraffe_16:

(Start: 14 @13358 has 228 MA's), (Start: 17 @13409 has 7 MA's), (19, 13421), (20, 13424), (22, 13433), (27, 13454), (48, 13649),

Gene: GoldenAsh_30 Start: 26790, Stop: 27110, Start Num: 15

Candidate Starts for GoldenAsh_30:

(Start: 15 @26790 has 52 MA's), (20, 26853), (23, 26865), (25, 26871), (26, 26880), (29, 26895), (31, 26916), (32, 26919), (34, 26934), (36, 26949), (37, 26961), (45, 27039), (51, 27099),

Gene: Gomashi_30 Start: 26791, Stop: 27111, Start Num: 15

Candidate Starts for Gomashi_30:

(Start: 15 @26791 has 52 MA's), (20, 26854), (23, 26866), (25, 26872), (26, 26881), (29, 26896), (31, 26917), (32, 26920), (34, 26935), (36, 26950), (37, 26962), (45, 27040), (51, 27100),

Gene: Grand2040_15 Start: 13373, Stop: 13723, Start Num: 14

Candidate Starts for Grand2040_15:

(Start: 14 @13373 has 228 MA's), (Start: 17 @13424 has 7 MA's), (19, 13436), (20, 13439), (22, 13448), (27, 13469), (48, 13664),

Gene: Gravaillia_34 Start: 29745, Stop: 30065, Start Num: 14

Candidate Starts for Gravaillia_34:

(Start: 14 @29745 has 228 MA's), (23, 29823), (26, 29838), (28, 29850), (31, 29880), (33, 29889), (37, 29925), (41, 29958), (47, 30012),

Gene: Gyarad_0016 Start: 13650, Stop: 14000, Start Num: 14

Candidate Starts for Gyarad_0016:

(Start: 14 @13650 has 228 MA's), (Start: 17 @13701 has 7 MA's), (19, 13713), (20, 13716), (22, 13725), (27, 13746), (48, 13941),

Gene: HH92_34 Start: 30016, Stop: 30336, Start Num: 14

Candidate Starts for HH92_34:

(Start: 14 @30016 has 228 MA's), (23, 30094), (26, 30109), (28, 30121), (31, 30151), (33, 30160), (37, 30196), (41, 30229), (47, 30283),

Gene: HSavage_16 Start: 13658, Stop: 14008, Start Num: 14

Candidate Starts for HSavage_16:

(Start: 14 @13658 has 228 MA's), (Start: 17 @13709 has 7 MA's), (19, 13721), (20, 13724), (22, 13733), (27, 13754), (48, 13949),

Gene: Hadrien_35 Start: 30016, Stop: 30336, Start Num: 14

Candidate Starts for Hadrien_35:

(Start: 14 @30016 has 228 MA's), (23, 30094), (26, 30109), (28, 30121), (31, 30151), (33, 30160), (37, 30196), (41, 30229), (47, 30283),

Gene: Hail_34 Start: 30016, Stop: 30336, Start Num: 14

Candidate Starts for Hail_34:

(Start: 14 @30016 has 228 MA's), (23, 30094), (26, 30109), (28, 30121), (31, 30151), (33, 30160), (37, 30196), (41, 30229), (47, 30283),

Gene: Haimas_16 Start: 13650, Stop: 14000, Start Num: 14

Candidate Starts for Haimas_16:

(Start: 14 @13650 has 228 MA's), (Start: 17 @13701 has 7 MA's), (19, 13713), (20, 13716), (22, 13725), (27, 13746), (48, 13941),

Gene: Haleema_15 Start: 13375, Stop: 13725, Start Num: 14

Candidate Starts for Haleema_15:

(Start: 14 @13375 has 228 MA's), (Start: 17 @13426 has 7 MA's), (19, 13438), (20, 13441), (22, 13450), (27, 13471), (48, 13666),

Gene: Halo_30 Start: 26785, Stop: 27105, Start Num: 15

Candidate Starts for Halo_30:

(Start: 15 @26785 has 52 MA's), (20, 26848), (23, 26860), (25, 26866), (26, 26875), (29, 26890), (31, 26911), (32, 26914), (34, 26929), (36, 26944), (37, 26956), (45, 27034), (51, 27094),

Gene: Hangman_16 Start: 15377, Stop: 15748, Start Num: 14

Candidate Starts for Hangman_16:

(Start: 14 @15377 has 228 MA's), (Start: 17 @15428 has 7 MA's), (19, 15440), (20, 15443), (22, 15452), (26, 15470), (32, 15509), (42, 15626),

Gene: Hartsy_16 Start: 13647, Stop: 13997, Start Num: 14

Candidate Starts for Hartsy_16:

(Start: 14 @13647 has 228 MA's), (Start: 17 @13698 has 7 MA's), (19, 13710), (20, 13713), (22, 13722), (27, 13743), (48, 13938),

Gene: Heath_16 Start: 15374, Stop: 15745, Start Num: 14

Candidate Starts for Heath_16:

(Start: 14 @15374 has 228 MA's), (Start: 17 @15425 has 7 MA's), (19, 15437), (20, 15440), (22, 15449), (26, 15467), (32, 15506), (42, 15623),

Gene: Held_16 Start: 13358, Stop: 13708, Start Num: 14

Candidate Starts for Held_16:

(Start: 14 @13358 has 228 MA's), (Start: 17 @13409 has 7 MA's), (19, 13421), (20, 13424), (22, 13433), (27, 13454), (48, 13649),

Gene: HenryJackson_15 Start: 13372, Stop: 13722, Start Num: 14

Candidate Starts for HenryJackson_15:

(Start: 14 @13372 has 228 MA's), (Start: 17 @13423 has 7 MA's), (19, 13435), (20, 13438), (22, 13447), (27, 13468), (48, 13663),

Gene: Hertubise_16 Start: 13665, Stop: 14015, Start Num: 14

Candidate Starts for Hertubise_16:

(Start: 14 @13665 has 228 MA's), (Start: 17 @13716 has 7 MA's), (19, 13728), (20, 13731), (22, 13740), (27, 13761), (48, 13956),

Gene: Hetaeria_16 Start: 13668, Stop: 14018, Start Num: 14

Candidate Starts for Hetaeria_16:

(Start: 14 @13668 has 228 MA's), (Start: 17 @13719 has 7 MA's), (19, 13731), (20, 13734), (22, 13743), (27, 13764), (48, 13959),

Gene: HighStump_15 Start: 13357, Stop: 13707, Start Num: 14

Candidate Starts for HighStump_15:

(Start: 14 @13357 has 228 MA's), (Start: 17 @13408 has 7 MA's), (19, 13420), (20, 13423), (22, 13432), (27, 13453), (48, 13648),

Gene: Hocus_15 Start: 13357, Stop: 13707, Start Num: 14

Candidate Starts for Hocus_15:

(Start: 14 @13357 has 228 MA's), (Start: 17 @13408 has 7 MA's), (19, 13420), (20, 13423), (22, 13432), (27, 13453), (48, 13648),

Gene: Hope_30 Start: 26790, Stop: 27110, Start Num: 15

Candidate Starts for Hope_30:

(Start: 15 @26790 has 52 MA's), (20, 26853), (23, 26865), (25, 26871), (26, 26880), (29, 26895), (31, 26916), (32, 26919), (34, 26934), (36, 26949), (37, 26961), (45, 27039), (51, 27099),

Gene: Horchata_16 Start: 13637, Stop: 13987, Start Num: 14

Candidate Starts for Horchata_16:

(Start: 14 @13637 has 228 MA's), (Start: 17 @13688 has 7 MA's), (20, 13703), (22, 13712), (27, 13733), (48, 13928),

Gene: Hydro_16 Start: 15374, Stop: 15745, Start Num: 14

Candidate Starts for Hydro_16:

(Start: 14 @15374 has 228 MA's), (Start: 17 @15425 has 7 MA's), (19, 15437), (20, 15440), (22, 15449), (26, 15467), (32, 15506), (42, 15623),

Gene: Inchworm_16 Start: 13641, Stop: 13991, Start Num: 14

Candidate Starts for Inchworm_16:

(Start: 14 @13641 has 228 MA's), (Start: 17 @13692 has 7 MA's), (19, 13704), (20, 13707), (22, 13716), (27, 13737), (48, 13932),

Gene: Indlovu_16 Start: 15203, Stop: 15598, Start Num: 14

Candidate Starts for Indlovu_16:

(Start: 14 @15203 has 228 MA's), (Start: 17 @15254 has 7 MA's), (19, 15266), (50, 15521), (52, 15533), (53, 15545),

Gene: JAMaL_16 Start: 15558, Stop: 15929, Start Num: 14

Candidate Starts for JAMaL_16:

(Start: 14 @15558 has 228 MA's), (Start: 17 @15609 has 7 MA's), (19, 15621), (22, 15633), (32, 15690), (33, 15696), (42, 15807), (43, 15816), (46, 15840),

Gene: JacAttac_16 Start: 13641, Stop: 13991, Start Num: 14

Candidate Starts for JacAttac_16:

(Start: 14 @13641 has 228 MA's), (Start: 17 @13692 has 7 MA's), (19, 13704), (20, 13707), (22, 13716), (27, 13737), (48, 13932),

Gene: JaguarMi_17 Start: 15255, Stop: 15575, Start Num: 17

Candidate Starts for JaguarMi_17:

(Start: 14 @15204 has 228 MA's), (Start: 17 @15255 has 7 MA's), (19, 15267), (22, 15279), (26, 15297), (32, 15336), (42, 15453),

Gene: JakeO_15 Start: 13365, Stop: 13715, Start Num: 14

Candidate Starts for JakeO_15:

(Start: 14 @13365 has 228 MA's), (Start: 17 @13416 has 7 MA's), (19, 13428), (20, 13431), (22, 13440), (27, 13461), (48, 13656),

Gene: Jane_30 Start: 26790, Stop: 27110, Start Num: 15

Candidate Starts for Jane_30:

(Start: 15 @26790 has 52 MA's), (20, 26853), (23, 26865), (25, 26871), (26, 26880), (29, 26895), (31, 26916), (32, 26919), (34, 26934), (36, 26949), (37, 26961), (45, 27039), (51, 27099),

Gene: JangoPhett_16 Start: 13642, Stop: 13992, Start Num: 14

Candidate Starts for JangoPhett_16:

(Start: 14 @13642 has 228 MA's), (Start: 17 @13693 has 7 MA's), (19, 13705), (20, 13708), (22, 13717), (27, 13738), (48, 13933),

Gene: Jillium_15 Start: 13363, Stop: 13713, Start Num: 14

Candidate Starts for Jillium_15:

(Start: 14 @13363 has 228 MA's), (Start: 17 @13414 has 7 MA's), (19, 13426), (20, 13429), (22, 13438), (27, 13459), (48, 13654),

Gene: Jiminy_15 Start: 13205, Stop: 13555, Start Num: 14

Candidate Starts for Jiminy_15:

(Start: 14 @13205 has 228 MA's), (Start: 17 @13256 has 7 MA's), (19, 13268), (20, 13271), (22, 13280), (27, 13301), (48, 13496),

Gene: Jolene_30 Start: 26790, Stop: 27110, Start Num: 15

Candidate Starts for Jolene_30:

(Start: 15 @26790 has 52 MA's), (20, 26853), (23, 26865), (25, 26871), (26, 26880), (29, 26895), (31, 26916), (32, 26919), (34, 26934), (36, 26949), (37, 26961), (45, 27039), (51, 27099),

Gene: Jolie2_30 Start: 27308, Stop: 27706, Start Num: 15

Candidate Starts for Jolie2_30:

(Start: 15 @27308 has 52 MA's), (24, 27386), (26, 27398), (29, 27413), (31, 27434), (32, 27437), (34, 27452), (39, 27524), (44, 27560),

Gene: Jonghyun_30 Start: 26790, Stop: 27110, Start Num: 15

Candidate Starts for Jonghyun_30:

(Start: 15 @26790 has 52 MA's), (20, 26853), (23, 26865), (25, 26871), (26, 26880), (29, 26895), (31, 26916), (32, 26919), (34, 26934), (36, 26949), (37, 26961), (45, 27039), (51, 27099),

Gene: JorRay_30 Start: 26790, Stop: 27110, Start Num: 15

Candidate Starts for JorRay_30:

(Start: 15 @26790 has 52 MA's), (20, 26853), (23, 26865), (25, 26871), (26, 26880), (29, 26895), (31, 26916), (32, 26919), (34, 26934), (36, 26949), (37, 26961), (45, 27039), (51, 27099),

Gene: Kahve_15 Start: 13372, Stop: 13722, Start Num: 14

Candidate Starts for Kahve_15:

(Start: 14 @13372 has 228 MA's), (Start: 17 @13423 has 7 MA's), (19, 13435), (20, 13438), (22, 13447), (27, 13468), (48, 13663),

Gene: Kailash_16 Start: 13659, Stop: 14009, Start Num: 14

Candidate Starts for Kailash_16:

(Start: 14 @13659 has 228 MA's), (Start: 17 @13710 has 7 MA's), (19, 13722), (20, 13725), (22, 13734), (27, 13755), (48, 13950),

Gene: Kareem_30 Start: 26790, Stop: 27110, Start Num: 15

Candidate Starts for Kareem_30:

(Start: 15 @26790 has 52 MA's), (20, 26853), (23, 26865), (25, 26871), (26, 26880), (29, 26895), (31, 26916), (32, 26919), (34, 26934), (36, 26949), (37, 26961), (45, 27039), (51, 27099),

Gene: Keitherie_16 Start: 13670, Stop: 14020, Start Num: 14

Candidate Starts for Keitherie_16:

(Start: 14 @13670 has 228 MA's), (Start: 17 @13721 has 7 MA's), (19, 13733), (20, 13736), (22, 13745), (27, 13766), (48, 13961),

Gene: Kimbrough_16 Start: 13360, Stop: 13710, Start Num: 14

Candidate Starts for Kimbrough_16:

(Start: 14 @13360 has 228 MA's), (Start: 17 @13411 has 7 MA's), (19, 13423), (20, 13426), (22, 13435), (27, 13456), (48, 13651),

Gene: Kinbote_35 Start: 30016, Stop: 30336, Start Num: 14

Candidate Starts for Kinbote_35:

(Start: 14 @30016 has 228 MA's), (23, 30094), (26, 30109), (28, 30121), (31, 30151), (33, 30160), (37, 30196), (41, 30229), (47, 30283),

Gene: KingTut_15 Start: 13352, Stop: 13702, Start Num: 14

Candidate Starts for KingTut_15:

(Start: 14 @13352 has 228 MA's), (Start: 17 @13403 has 7 MA's), (19, 13415), (20, 13418), (22, 13427), (27, 13448), (48, 13643),

Gene: KingVeVeVe_16 Start: 13639, Stop: 13989, Start Num: 14

Candidate Starts for KingVeVeVe_16:

(Start: 14 @13639 has 228 MA's), (Start: 17 @13690 has 7 MA's), (20, 13705), (22, 13714), (27, 13735), (48, 13930),

Gene: KlimbOn_16 Start: 13650, Stop: 14000, Start Num: 14

Candidate Starts for KlimbOn_16:

(Start: 14 @13650 has 228 MA's), (Start: 17 @13701 has 7 MA's), (19, 13713), (20, 13716), (22, 13725), (27, 13746), (48, 13941),

Gene: Kloppinator_16 Start: 13666, Stop: 14016, Start Num: 14

Candidate Starts for Kloppinator_16:

(Start: 14 @13666 has 228 MA's), (Start: 17 @13717 has 7 MA's), (19, 13729), (20, 13732), (22, 13741), (27, 13762), (48, 13957),

Gene: Knocker_20 Start: 17715, Stop: 18101, Start Num: 14

Candidate Starts for Knocker_20:

(Start: 14 @17715 has 228 MA's), (26, 17808), (27, 17811), (49, 18000),

Gene: Kwadwo_15 Start: 13351, Stop: 13701, Start Num: 14

Candidate Starts for Kwadwo_15:

(Start: 14 @13351 has 228 MA's), (Start: 17 @13402 has 7 MA's), (19, 13414), (20, 13417), (22, 13426), (27, 13447), (48, 13642),

Gene: Kwksand96_15 Start: 13215, Stop: 13565, Start Num: 14

Candidate Starts for Kwksand96_15:

(Start: 14 @13215 has 228 MA's), (Start: 17 @13266 has 7 MA's), (19, 13278), (20, 13281), (22, 13290), (27, 13311), (48, 13506),

Gene: Labeouficaum_15 Start: 13209, Stop: 13559, Start Num: 14

Candidate Starts for Labeouficaum_15:

(Start: 14 @13209 has 228 MA's), (Start: 17 @13260 has 7 MA's), (19, 13272), (20, 13275), (22, 13284), (27, 13305), (48, 13500),

Gene: LasagnaCat_16 Start: 13653, Stop: 14003, Start Num: 14

Candidate Starts for LasagnaCat_16:

(Start: 14 @13653 has 228 MA's), (Start: 17 @13704 has 7 MA's), (19, 13716), (20, 13719), (22, 13728), (27, 13749), (48, 13944),

Gene: LeeLot_16 Start: 13650, Stop: 14000, Start Num: 14

Candidate Starts for LeeLot_16:

(Start: 14 @13650 has 228 MA's), (Start: 17 @13701 has 7 MA's), (19, 13713), (20, 13716), (22, 13725), (27, 13746), (48, 13941),

Gene: Lego3393_16 Start: 13666, Stop: 14016, Start Num: 14

Candidate Starts for Lego3393_16:

(Start: 14 @13666 has 228 MA's), (Start: 17 @13717 has 7 MA's), (19, 13729), (20, 13732), (22, 13741), (27, 13762), (48, 13957),

Gene: Legolas_15 Start: 13367, Stop: 13717, Start Num: 14

Candidate Starts for Legolas_15:

(Start: 14 @13367 has 228 MA's), (Start: 17 @13418 has 7 MA's), (19, 13430), (20, 13433), (22, 13442), (27, 13463), (48, 13658),

Gene: LemonSlice_16 Start: 13361, Stop: 13711, Start Num: 14

Candidate Starts for LemonSlice_16:

(Start: 14 @13361 has 228 MA's), (Start: 17 @13412 has 7 MA's), (19, 13424), (20, 13427), (22, 13436), (27, 13457), (48, 13652),

Gene: Lemuria_31 Start: 28466, Stop: 28822, Start Num: 15

Candidate Starts for Lemuria_31:

(11, 28391), (Start: 15 @28466 has 52 MA's), (24, 28547), (26, 28559), (31, 28595), (32, 28598), (33, 28604), (39, 28685), (44, 28721), (52, 28802),

Gene: Liefie_30 Start: 26788, Stop: 27108, Start Num: 15

Candidate Starts for Liefie_30:

(Start: 15 @26788 has 52 MA's), (20, 26851), (23, 26863), (25, 26869), (26, 26878), (29, 26893), (31, 26914), (32, 26917), (34, 26932), (36, 26947), (37, 26959), (45, 27037), (51, 27097),

Gene: LilHazelnut_35 Start: 30016, Stop: 30336, Start Num: 14

Candidate Starts for LilHazelnut_35:

(Start: 14 @30016 has 228 MA's), (23, 30094), (26, 30109), (28, 30121), (31, 30151), (33, 30160), (37, 30196), (41, 30229), (47, 30283),

Gene: LilMcDreamy_16 Start: 15832, Stop: 16200, Start Num: 14

Candidate Starts for LilMcDreamy_16:

(Start: 14 @15832 has 228 MA's), (20, 15898), (24, 15913), (25, 15916), (28, 15937), (32, 15964), (38, 16039), (45, 16105), (46, 16111),

Gene: Lolalove_16 Start: 15374, Stop: 15745, Start Num: 14

Candidate Starts for Lolalove_16:

(Start: 14 @15374 has 228 MA's), (Start: 17 @15425 has 7 MA's), (19, 15437), (20, 15440), (22, 15449), (26, 15467), (42, 15623),

Gene: LostAndPhound_15 Start: 13363, Stop: 13713, Start Num: 14

Candidate Starts for LostAndPhound_15:

(Start: 14 @13363 has 228 MA's), (Start: 17 @13414 has 7 MA's), (19, 13426), (20, 13429), (22, 13438), (27, 13459), (48, 13654),

Gene: LouisV14_30 Start: 26790, Stop: 27110, Start Num: 15

Candidate Starts for LouisV14_30:

(Start: 15 @26790 has 52 MA's), (20, 26853), (23, 26865), (25, 26871), (26, 26880), (29, 26895), (31, 26916), (32, 26919), (34, 26934), (36, 26949), (37, 26961), (45, 27039), (51, 27099),

Gene: LuckyMarjie_15 Start: 13375, Stop: 13725, Start Num: 14

Candidate Starts for LuckyMarjie_15:

(Start: 14 @13375 has 228 MA's), (Start: 17 @13426 has 7 MA's), (19, 13438), (20, 13441), (22, 13450), (27, 13471), (48, 13666),

Gene: Luke_35 Start: 29971, Stop: 30291, Start Num: 14

Candidate Starts for Luke_35:

(Start: 14 @29971 has 228 MA's), (23, 30049), (26, 30064), (28, 30076), (31, 30106), (33, 30115), (37, 30151), (41, 30184), (47, 30238),

Gene: Lulumae_15 Start: 13352, Stop: 13702, Start Num: 14

Candidate Starts for Lulumae_15:

(Start: 14 @13352 has 228 MA's), (Start: 17 @13403 has 7 MA's), (19, 13415), (20, 13418), (22, 13427), (27, 13448), (48, 13643),

Gene: Lulwa_16 Start: 13641, Stop: 13991, Start Num: 14

Candidate Starts for Lulwa_16:

(Start: 14 @13641 has 228 MA's), (Start: 17 @13692 has 7 MA's), (20, 13707), (22, 13716), (27, 13737), (48, 13932),

Gene: Lumine_15 Start: 13345, Stop: 13695, Start Num: 14

Candidate Starts for Lumine_15:

(Start: 14 @13345 has 228 MA's), (Start: 17 @13396 has 7 MA's), (19, 13408), (20, 13411), (22, 13420), (27, 13441), (48, 13636),

Gene: Luna22_34 Start: 30016, Stop: 30336, Start Num: 14

Candidate Starts for Luna22_34:

(Start: 14 @30016 has 228 MA's), (23, 30094), (26, 30109), (28, 30121), (31, 30151), (33, 30160), (37, 30196), (41, 30229), (47, 30283),

Gene: MOOREtheMARYer_31 Start: 28761, Stop: 29120, Start Num: 15

Candidate Starts for MOOREtheMARYer_31:

(Start: 15 @28761 has 52 MA's), (24, 28839), (26, 28851), (31, 28887), (32, 28890), (39, 28977), (44, 29013), (52, 29094),

Gene: MRabcd_15 Start: 13354, Stop: 13704, Start Num: 14

Candidate Starts for MRabcd_15:

(Start: 14 @13354 has 228 MA's), (Start: 17 @13405 has 7 MA's), (19, 13417), (20, 13420), (22, 13429), (27, 13450), (48, 13645),

Gene: Mag7_15 Start: 13209, Stop: 13559, Start Num: 14

Candidate Starts for Mag7_15:

(Start: 14 @13209 has 228 MA's), (Start: 17 @13260 has 7 MA's), (19, 13272), (20, 13275), (22, 13284), (27, 13305), (48, 13500),

Gene: Magic8_16 Start: 13647, Stop: 13997, Start Num: 14

Candidate Starts for Magic8_16:

(Start: 14 @13647 has 228 MA's), (Start: 17 @13698 has 7 MA's), (19, 13710), (20, 13713), (22, 13722), (27, 13743), (48, 13938),

Gene: Magpie_16 Start: 15559, Stop: 15933, Start Num: 14

Candidate Starts for Magpie_16:

(Start: 14 @15559 has 228 MA's), (Start: 17 @15610 has 7 MA's), (19, 15622), (20, 15625), (22, 15634), (26, 15652), (42, 15808),

Gene: Marmie_30 Start: 26790, Stop: 27110, Start Num: 15

Candidate Starts for Marmie_30:

(Start: 15 @26790 has 52 MA's), (20, 26853), (23, 26865), (25, 26871), (26, 26880), (29, 26895), (31, 26916), (32, 26919), (34, 26934), (36, 26949), (37, 26961), (45, 27039), (51, 27099),

Gene: Maru_15 Start: 13355, Stop: 13705, Start Num: 14

Candidate Starts for Maru_15:

(Start: 14 @13355 has 228 MA's), (Start: 17 @13406 has 7 MA's), (19, 13418), (20, 13421), (22, 13430), (27, 13451), (48, 13646),

Gene: Mcshane_15 Start: 13351, Stop: 13701, Start Num: 14

Candidate Starts for Mcshane_15:

(Start: 14 @13351 has 228 MA's), (Start: 17 @13402 has 7 MA's), (19, 13414), (20, 13417), (22, 13426), (27, 13447), (48, 13642),

Gene: Mecca_15 Start: 13348, Stop: 13698, Start Num: 14

Candidate Starts for Mecca_15:

(Start: 14 @13348 has 228 MA's), (Start: 17 @13399 has 7 MA's), (19, 13411), (20, 13414), (22, 13423), (27, 13444), (48, 13639),

Gene: Melc17_16 Start: 13641, Stop: 13991, Start Num: 14

Candidate Starts for Melc17_16:

(Start: 14 @13641 has 228 MA's), (Start: 17 @13692 has 7 MA's), (19, 13704), (20, 13707), (22, 13716), (27, 13737), (48, 13932),

Gene: Mercurio_32 Start: 28993, Stop: 29313, Start Num: 15

Candidate Starts for Mercurio_32:

(Start: 15 @28993 has 52 MA's), (24, 29071), (26, 29083), (31, 29119), (32, 29122), (34, 29137), (39, 29209), (44, 29245),

Gene: Mesh1_16 Start: 13659, Stop: 14009, Start Num: 14

Candidate Starts for Mesh1_16:

(Start: 14 @13659 has 228 MA's), (Start: 17 @13710 has 7 MA's), (19, 13722), (20, 13725), (22, 13734), (27, 13755), (48, 13950),

Gene: MichaelPhcott_15 Start: 13209, Stop: 13559, Start Num: 14

Candidate Starts for MichaelPhcott_15:

(Start: 14 @13209 has 228 MA's), (Start: 17 @13260 has 7 MA's), (19, 13272), (20, 13275), (22, 13284), (27, 13305), (48, 13500),

Gene: Mikota_16 Start: 13636, Stop: 13986, Start Num: 14

Candidate Starts for Mikota_16:

(Start: 14 @13636 has 228 MA's), (Start: 17 @13687 has 7 MA's), (20, 13702), (22, 13711), (27, 13732), (48, 13927),

Gene: MiniBoss_16 Start: 13638, Stop: 13988, Start Num: 14

Candidate Starts for MiniBoss_16:

(Start: 14 @13638 has 228 MA's), (Start: 17 @13689 has 7 MA's), (20, 13704), (22, 13713), (27, 13734), (48, 13929),

Gene: MitKao_16 Start: 13357, Stop: 13707, Start Num: 14

Candidate Starts for MitKao_16:

(Start: 14 @13357 has 228 MA's), (Start: 17 @13408 has 7 MA's), (19, 13420), (20, 13423), (22, 13432), (27, 13453), (48, 13648),

Gene: Mithril_16 Start: 15377, Stop: 15748, Start Num: 14

Candidate Starts for Mithril_16:

(Start: 14 @15377 has 228 MA's), (Start: 17 @15428 has 7 MA's), (19, 15440), (20, 15443), (22, 15452), (26, 15470), (42, 15626),

Gene: Morty_16 Start: 13659, Stop: 14009, Start Num: 14

Candidate Starts for Morty_16:

(Start: 14 @13659 has 228 MA's), (Start: 17 @13710 has 7 MA's), (19, 13722), (20, 13725), (22, 13734), (27, 13755), (48, 13950),

Gene: Mosaic_15 Start: 13364, Stop: 13714, Start Num: 14

Candidate Starts for Mosaic_15:

(Start: 14 @13364 has 228 MA's), (Start: 17 @13415 has 7 MA's), (19, 13427), (20, 13430), (22, 13439), (27, 13460), (48, 13655),

Gene: Mowgli_30 Start: 26790, Stop: 27110, Start Num: 15

Candidate Starts for Mowgli_30:

(Start: 15 @26790 has 52 MA's), (20, 26853), (23, 26865), (25, 26871), (26, 26880), (29, 26895), (31, 26916), (32, 26919), (34, 26934), (36, 26949), (37, 26961), (45, 27039), (51, 27099),

Gene: Mudslide_16 Start: 15622, Stop: 15993, Start Num: 14

Candidate Starts for Mudslide_16:

(Start: 14 @15622 has 228 MA's), (Start: 17 @15673 has 7 MA's), (19, 15685), (20, 15688), (22, 15697), (26, 15715), (42, 15871),

Gene: Mulan_15 Start: 13357, Stop: 13707, Start Num: 14

Candidate Starts for Mulan_15:

(Start: 14 @13357 has 228 MA's), (Start: 17 @13408 has 7 MA's), (19, 13420), (20, 13423), (22, 13432), (27, 13453), (48, 13648),

Gene: Mutante_15 Start: 13360, Stop: 13710, Start Num: 14

Candidate Starts for Mutante_15:

(Start: 14 @13360 has 228 MA's), (Start: 17 @13411 has 7 MA's), (19, 13423), (20, 13426), (22, 13435), (27, 13456), (48, 13651),

Gene: Nacho_0016 Start: 13650, Stop: 14000, Start Num: 14

Candidate Starts for Nacho_0016:

(Start: 14 @13650 has 228 MA's), (Start: 17 @13701 has 7 MA's), (19, 13713), (20, 13716), (22, 13725), (27, 13746), (48, 13941),

Gene: Nanao_15 Start: 14360, Stop: 14680, Start Num: 17

Candidate Starts for Nanao_15:

(5, 14099), (7, 14141), (9, 14195), (12, 14225), (13, 14294), (16, 14321), (Start: 17 @14360 has 7 MA's), (19, 14372), (22, 14384), (26, 14402), (33, 14447), (42, 14558),

Gene: Nicole21_16 Start: 13642, Stop: 13992, Start Num: 14

Candidate Starts for Nicole21_16:

(Start: 14 @13642 has 228 MA's), (Start: 17 @13693 has 7 MA's), (19, 13705), (20, 13708), (22, 13717), (27, 13738), (48, 13933),

Gene: Nigel_14 Start: 14277, Stop: 14597, Start Num: 17

Candidate Starts for Nigel_14:

(Start: 14 @14226 has 228 MA's), (Start: 17 @14277 has 7 MA's), (19, 14289), (22, 14301), (32, 14358), (33, 14364), (42, 14475), (43, 14484), (46, 14508),

Gene: OBUpride_35 Start: 30010, Stop: 30330, Start Num: 14

Candidate Starts for OBUpride_35:

(Start: 14 @30010 has 228 MA's), (23, 30088), (26, 30103), (28, 30115), (31, 30145), (33, 30154), (37, 30190), (41, 30223), (47, 30277),

Gene: OctaviousRex_30 Start: 26790, Stop: 27110, Start Num: 15

Candidate Starts for OctaviousRex_30:

(Start: 15 @26790 has 52 MA's), (20, 26853), (23, 26865), (25, 26871), (26, 26880), (29, 26895), (31, 26916), (32, 26919), (34, 26934), (36, 26949), (37, 26961), (45, 27039), (51, 27099),

Gene: Oline_15 Start: 13209, Stop: 13559, Start Num: 14

Candidate Starts for Oline_15:

(Start: 14 @13209 has 228 MA's), (Start: 17 @13260 has 7 MA's), (19, 13272), (20, 13275), (22, 13284), (27, 13305), (48, 13500),

Gene: Omniscient_16 Start: 13659, Stop: 14009, Start Num: 14

Candidate Starts for Omniscient_16:

(Start: 14 @13659 has 228 MA's), (Start: 17 @13710 has 7 MA's), (19, 13722), (20, 13725), (22, 13734), (27, 13755), (48, 13950),

Gene: Pace1224_29 Start: 28264, Stop: 28620, Start Num: 15

Candidate Starts for Pace1224_29:

(Start: 15 @28264 has 52 MA's), (24, 28342), (26, 28354), (31, 28390), (32, 28393), (39, 28480), (44, 28516), (46, 28540), (52, 28597),

Gene: Paito_30 Start: 27024, Stop: 27332, Start Num: 15

Candidate Starts for Paito_30:

(Start: 15 @27024 has 52 MA's), (20, 27087), (23, 27099), (25, 27105), (26, 27114), (31, 27150), (32, 27153), (34, 27168), (36, 27183), (37, 27195),

Gene: Peeb_30 Start: 26790, Stop: 27110, Start Num: 15

Candidate Starts for Peeb_30:

(Start: 15 @26790 has 52 MA's), (20, 26853), (23, 26865), (25, 26871), (26, 26880), (29, 26895), (31, 26916), (32, 26919), (34, 26934), (36, 26949), (37, 26961), (45, 27039), (51, 27099),

Gene: PenguinLover67_19 Start: 16545, Stop: 16991, Start Num: 14

Candidate Starts for PenguinLover67_19:

(Start: 14 @16545 has 228 MA's), (19, 16608), (26, 16638), (47, 16824), (54, 16896),

Gene: Periodt_30 Start: 26781, Stop: 27101, Start Num: 15

Candidate Starts for Periodt_30:

(Start: 15 @26781 has 52 MA's), (20, 26844), (23, 26856), (25, 26862), (26, 26871), (29, 26886), (31, 26907), (32, 26910), (34, 26925), (36, 26940), (37, 26952), (45, 27030), (51, 27090),

Gene: Phamished_16 Start: 13656, Stop: 14006, Start Num: 14

Candidate Starts for Phamished_16:

(Start: 14 @13656 has 228 MA's), (Start: 17 @13707 has 7 MA's), (19, 13719), (20, 13722), (22, 13731), (27, 13752), (48, 13947),

Gene: Phareon_16 Start: 13357, Stop: 13707, Start Num: 14

Candidate Starts for Phareon_16:

(Start: 14 @13357 has 228 MA's), (Start: 17 @13408 has 7 MA's), (19, 13420), (20, 13423), (22, 13432), (27, 13453), (48, 13648),

Gene: PhatCats2014_16 Start: 13666, Stop: 14016, Start Num: 14

Candidate Starts for PhatCats2014_16:

(Start: 14 @13666 has 228 MA's), (Start: 17 @13717 has 7 MA's), (19, 13729), (20, 13732), (22, 13741), (27, 13762), (48, 13957),

Gene: PhenghisKhan_15 Start: 13209, Stop: 13559, Start Num: 14

Candidate Starts for PhenghisKhan_15:

(Start: 14 @13209 has 228 MA's), (Start: 17 @13260 has 7 MA's), (19, 13272), (20, 13275), (22, 13284), (27, 13305), (48, 13500),

Gene: Pherdinand_16 Start: 13654, Stop: 14004, Start Num: 14

Candidate Starts for Pherdinand_16:

(Start: 14 @13654 has 228 MA's), (Start: 17 @13705 has 7 MA's), (19, 13717), (20, 13720), (22, 13729), (27, 13750), (48, 13945),

Gene: Phergie_15 Start: 13203, Stop: 13553, Start Num: 14

Candidate Starts for Phergie_15:

(Start: 14 @13203 has 228 MA's), (Start: 17 @13254 has 7 MA's), (19, 13266), (20, 13269), (22, 13278), (27, 13299), (48, 13494),

Gene: Phleuron_15 Start: 13209, Stop: 13559, Start Num: 14

Candidate Starts for Phleuron_15:

(Start: 14 @13209 has 228 MA's), (Start: 17 @13260 has 7 MA's), (19, 13272), (20, 13275), (22, 13284), (27, 13305), (48, 13500),

Gene: PhrankReynolds_15 Start: 13209, Stop: 13559, Start Num: 14

Candidate Starts for PhrankReynolds_15:

(Start: 14 @13209 has 228 MA's), (Start: 17 @13260 has 7 MA's), (19, 13272), (20, 13275), (22, 13284), (27, 13305), (48, 13500),

Gene: Phreak_30 Start: 26790, Stop: 27110, Start Num: 15

Candidate Starts for Phreak_30:

(Start: 15 @26790 has 52 MA's), (20, 26853), (23, 26865), (25, 26871), (26, 26880), (29, 26895), (31, 26916), (32, 26919), (34, 26934), (36, 26949), (37, 26961), (45, 27039), (51, 27099),

Gene: PhrodoBaggins_15 Start: 13644, Stop: 13994, Start Num: 14

Candidate Starts for PhrodoBaggins_15:

(Start: 14 @13644 has 228 MA's), (Start: 17 @13695 has 7 MA's), (19, 13707), (20, 13710), (22, 13719), (27, 13740), (48, 13935),

Gene: Phunky_16 Start: 13650, Stop: 14000, Start Num: 14

Candidate Starts for Phunky_16:

(Start: 14 @13650 has 228 MA's), (Start: 17 @13701 has 7 MA's), (19, 13713), (20, 13716), (22, 13725), (27, 13746), (48, 13941),

Gene: Piglet_0015 Start: 13653, Stop: 14003, Start Num: 14

Candidate Starts for Piglet_0015:

(Start: 14 @13653 has 228 MA's), (Start: 17 @13704 has 7 MA's), (19, 13716), (20, 13719), (22, 13728), (27, 13749), (48, 13944),

Gene: PinheadLarry_16 Start: 13369, Stop: 13719, Start Num: 14

Candidate Starts for PinheadLarry_16:

(Start: 14 @13369 has 228 MA's), (Start: 17 @13420 has 7 MA's), (19, 13432), (20, 13435), (22, 13444), (27, 13465), (48, 13660),

Gene: PinkYoshi_30 Start: 26781, Stop: 27101, Start Num: 15

Candidate Starts for PinkYoshi_30:

(Start: 15 @26781 has 52 MA's), (20, 26844), (23, 26856), (25, 26862), (26, 26871), (29, 26886), (31, 26907), (32, 26910), (34, 26925), (36, 26940), (37, 26952), (45, 27030), (51, 27090),

Gene: Pinnie_31 Start: 29132, Stop: 29491, Start Num: 15

Candidate Starts for Pinnie_31:

(Start: 15 @29132 has 52 MA's), (24, 29210), (26, 29222), (31, 29258), (32, 29261), (39, 29348), (44, 29384), (52, 29465),

Gene: Pipsqueak_16 Start: 13656, Stop: 14006, Start Num: 14

Candidate Starts for Pipsqueak_16:

(Start: 14 @13656 has 228 MA's), (Start: 17 @13707 has 7 MA's), (19, 13719), (20, 13722), (22, 13731), (27, 13752), (48, 13947),

Gene: Placalicious_15 Start: 13351, Stop: 13701, Start Num: 14

Candidate Starts for Placalicious_15:

(Start: 14 @13351 has 228 MA's), (Start: 17 @13402 has 7 MA's), (19, 13414), (20, 13417), (22, 13426), (27, 13447), (48, 13642),

Gene: Plagueis_30 Start: 26625, Stop: 26945, Start Num: 15

Candidate Starts for Plagueis_30:

(Start: 15 @26625 has 52 MA's), (20, 26688), (23, 26700), (25, 26706), (26, 26715), (29, 26730), (31, 26751), (32, 26754), (34, 26769), (36, 26784), (37, 26796), (45, 26874), (51, 26934),

Gene: Plmatters_16 Start: 13650, Stop: 14000, Start Num: 14

Candidate Starts for Plmatters_16:

(Start: 14 @13650 has 228 MA's), (Start: 17 @13701 has 7 MA's), (19, 13713), (20, 13716), (22, 13725), (27, 13746), (48, 13941),

Gene: Podrick_16 Start: 13641, Stop: 13991, Start Num: 14

Candidate Starts for Podrick_16:

(Start: 14 @13641 has 228 MA's), (Start: 17 @13692 has 7 MA's), (20, 13707), (22, 13716), (27, 13737), (48, 13932),

Gene: Poster_15 Start: 14361, Stop: 14681, Start Num: 17

Candidate Starts for Poster_15:

(1, 13947), (Start: 14 @14310 has 228 MA's), (Start: 17 @14361 has 7 MA's), (19, 14373), (22, 14385), (26, 14403), (33, 14448), (42, 14559),

Gene: Prince_17 Start: 15585, Stop: 15905, Start Num: 17

Candidate Starts for Prince_17:

(Start: 14 @15534 has 228 MA's), (Start: 17 @15585 has 7 MA's), (19, 15597), (20, 15600), (22, 15609), (26, 15627), (42, 15783),

Gene: ProfessorX_16 Start: 13642, Stop: 13992, Start Num: 14

Candidate Starts for ProfessorX_16:

(Start: 14 @13642 has 228 MA's), (Start: 17 @13693 has 7 MA's), (19, 13705), (20, 13708), (22, 13717), (27, 13738), (48, 13933),

Gene: QueenBeane_16 Start: 13650, Stop: 14000, Start Num: 14

Candidate Starts for QueenBeane_16:

(Start: 14 @13650 has 228 MA's), (Start: 17 @13701 has 7 MA's), (19, 13713), (20, 13716), (22, 13725), (27, 13746), (48, 13941),

Gene: Quisquilliae_16 Start: 13665, Stop: 14015, Start Num: 14

Candidate Starts for Quisquilliae_16:

(Start: 14 @13665 has 228 MA's), (Start: 17 @13716 has 7 MA's), (19, 13728), (20, 13731), (22, 13740), (27, 13761), (48, 13956),

Gene: Rabbs_30 Start: 26873, Stop: 27193, Start Num: 15

Candidate Starts for Rabbs_30:

(Start: 15 @26873 has 52 MA's), (20, 26936), (23, 26948), (25, 26954), (26, 26963), (29, 26978), (31, 26999), (32, 27002), (34, 27017), (36, 27032), (37, 27044), (45, 27122), (51, 27182),

Gene: RawrgerThat_16 Start: 15422, Stop: 15742, Start Num: 17

Candidate Starts for RawrgerThat_16:

(Start: 14 @15371 has 228 MA's), (Start: 17 @15422 has 7 MA's), (19, 15434), (20, 15437), (22, 15446), (26, 15464), (32, 15503), (42, 15620),

Gene: RedMaple_15 Start: 13662, Stop: 14012, Start Num: 14

Candidate Starts for RedMaple_15:

(Start: 14 @13662 has 228 MA's), (Start: 17 @13713 has 7 MA's), (19, 13725), (20, 13728), (22, 13737), (27, 13758), (48, 13953),

Gene: Remy19_30 Start: 26790, Stop: 27110, Start Num: 15

Candidate Starts for Remy19_30:

(Start: 15 @26790 has 52 MA's), (20, 26853), (23, 26865), (25, 26871), (26, 26880), (29, 26895), (31, 26916), (32, 26919), (34, 26934), (36, 26949), (37, 26961), (45, 27039), (51, 27099),

Gene: Renaissance_30 Start: 26790, Stop: 27110, Start Num: 15

Candidate Starts for Renaissance_30:

(Start: 15 @26790 has 52 MA's), (20, 26853), (23, 26865), (25, 26871), (26, 26880), (29, 26895), (31, 26916), (32, 26919), (34, 26934), (36, 26949), (37, 26961), (45, 27039), (51, 27099),

Gene: Riggan_16 Start: 13630, Stop: 13980, Start Num: 14

Candidate Starts for Riggan_16:

(Start: 14 @13630 has 228 MA's), (Start: 17 @13681 has 7 MA's), (19, 13693), (20, 13696), (22, 13705), (27, 13726), (48, 13921),

Gene: Robyn_15 Start: 13223, Stop: 13573, Start Num: 14

Candidate Starts for Robyn_15:

(Start: 14 @13223 has 228 MA's), (Start: 17 @13274 has 7 MA's), (20, 13289), (22, 13298), (27, 13319), (48, 13514),

Gene: Roliet_16 Start: 13650, Stop: 14000, Start Num: 14

Candidate Starts for Roliet_16:

(Start: 14 @13650 has 228 MA's), (Start: 17 @13701 has 7 MA's), (19, 13713), (20, 13716), (22, 13725), (27, 13746), (48, 13941),

Gene: Roscoe_17 Start: 13891, Stop: 14241, Start Num: 14

Candidate Starts for Roscoe_17:

(Start: 14 @13891 has 228 MA's), (Start: 17 @13942 has 7 MA's), (19, 13954), (20, 13957), (22, 13966), (27, 13987), (48, 14182),

Gene: Roy17_16 Start: 13352, Stop: 13702, Start Num: 14

Candidate Starts for Roy17_16:

(Start: 14 @13352 has 228 MA's), (Start: 17 @13403 has 7 MA's), (19, 13415), (20, 13418), (22, 13427), (27, 13448), (48, 13643),

Gene: SDcharge11_16 Start: 13631, Stop: 13981, Start Num: 14

Candidate Starts for SDcharge11_16:

(Start: 14 @13631 has 228 MA's), (Start: 17 @13682 has 7 MA's), (20, 13697), (22, 13706), (27, 13727), (48, 13922),

Gene: Saguaro_18 Start: 16390, Stop: 16737, Start Num: 14

Candidate Starts for Saguaro_18:

(Start: 14 @16390 has 228 MA's), (20, 16456), (24, 16471),

Gene: Samaymay_16 Start: 13650, Stop: 14000, Start Num: 14

Candidate Starts for Samaymay_16:

(Start: 14 @13650 has 228 MA's), (Start: 17 @13701 has 7 MA's), (19, 13713), (20, 13716), (22, 13725), (27, 13746), (48, 13941),

Gene: SassyCat97_15 Start: 13357, Stop: 13707, Start Num: 14

Candidate Starts for SassyCat97_15:

(Start: 14 @13357 has 228 MA's), (Start: 17 @13408 has 7 MA's), (19, 13420), (20, 13423), (22, 13432), (27, 13453), (48, 13648),

Gene: Schadenfreude_15 Start: 13207, Stop: 13557, Start Num: 14

Candidate Starts for Schadenfreude_15:

(Start: 14 @13207 has 228 MA's), (Start: 17 @13258 has 7 MA's), (19, 13270), (20, 13273), (22, 13282), (27, 13303), (48, 13498),

Gene: Schiebel_30 Start: 26790, Stop: 27110, Start Num: 15

Candidate Starts for Schiebel_30:

(Start: 15 @26790 has 52 MA's), (20, 26853), (23, 26865), (25, 26871), (26, 26880), (29, 26895), (31, 26916), (32, 26919), (34, 26934), (36, 26949), (37, 26961), (45, 27039), (51, 27099),

Gene: Scrick_15 Start: 13370, Stop: 13720, Start Num: 14

Candidate Starts for Scrick_15:

(Start: 14 @13370 has 228 MA's), (Start: 17 @13421 has 7 MA's), (19, 13433), (20, 13436), (22, 13445), (27, 13466), (48, 13661),

Gene: Serendipitous_17 Start: 15447, Stop: 15791, Start Num: 14

Candidate Starts for Serendipitous_17:

(2, 15102), (3, 15189), (10, 15330), (Start: 14 @15447 has 228 MA's), (Start: 17 @15498 has 7 MA's), (21, 15519), (26, 15540), (38, 15654), (40, 15669),

Gene: Serpentine_0016 Start: 13653, Stop: 14003, Start Num: 14

Candidate Starts for Serpentine_0016:

(Start: 14 @13653 has 228 MA's), (Start: 17 @13704 has 7 MA's), (19, 13716), (20, 13719), (22, 13728), (27, 13749), (48, 13944),

Gene: ShaboiShabazz_30 Start: 26790, Stop: 27110, Start Num: 15

Candidate Starts for ShaboiShabazz_30:

(Start: 15 @26790 has 52 MA's), (20, 26853), (23, 26865), (25, 26871), (26, 26880), (29, 26895), (31, 26916), (32, 26919), (34, 26934), (36, 26949), (37, 26961), (45, 27039), (51, 27099),

Gene: Sheila_16 Start: 13642, Stop: 13992, Start Num: 14

Candidate Starts for Sheila_16:

(Start: 14 @13642 has 228 MA's), (Start: 17 @13693 has 7 MA's), (19, 13705), (20, 13708), (22, 13717), (27, 13738), (48, 13933),

Gene: ShiVal_16 Start: 13644, Stop: 13994, Start Num: 14

Candidate Starts for ShiVal_16:

(Start: 14 @13644 has 228 MA's), (Start: 17 @13695 has 7 MA's), (19, 13707), (20, 13710), (22, 13719), (27, 13740), (48, 13935),

Gene: Simielle_15 Start: 13342, Stop: 13692, Start Num: 14

Candidate Starts for Simielle_15:

(Start: 14 @13342 has 228 MA's), (Start: 17 @13393 has 7 MA's), (19, 13405), (20, 13408), (22, 13417), (27, 13438), (48, 13633),

Gene: Sizemore_30 Start: 26791, Stop: 27111, Start Num: 15

Candidate Starts for Sizemore_30:

(Start: 15 @26791 has 52 MA's), (20, 26854), (23, 26866), (25, 26872), (26, 26881), (29, 26896), (31, 26917), (32, 26920), (34, 26935), (36, 26950), (37, 26962), (45, 27040), (51, 27100),

Gene: Skippy_16 Start: 13635, Stop: 13985, Start Num: 14

Candidate Starts for Skippy_16:

(Start: 14 @13635 has 228 MA's), (Start: 17 @13686 has 7 MA's), (19, 13698), (20, 13701), (22, 13710), (27, 13731), (48, 13926),

Gene: Slatt_16 Start: 13667, Stop: 14017, Start Num: 14

Candidate Starts for Slatt_16:

(Start: 14 @13667 has 228 MA's), (Start: 17 @13718 has 7 MA's), (19, 13730), (20, 13733), (22, 13742), (27, 13763), (48, 13958),

Gene: Sneeze_30 Start: 26872, Stop: 27192, Start Num: 15

Candidate Starts for Sneeze_30:

(Start: 15 @26872 has 52 MA's), (20, 26935), (23, 26947), (25, 26953), (26, 26962), (29, 26977), (31, 26998), (32, 27001), (34, 27016), (36, 27031), (37, 27043), (45, 27121), (51, 27181),

Gene: Soile_16 Start: 13362, Stop: 13712, Start Num: 14

Candidate Starts for Soile_16:

(Start: 14 @13362 has 228 MA's), (Start: 17 @13413 has 7 MA's), (19, 13425), (20, 13428), (22, 13437), (27, 13458), (48, 13653),

Gene: Solosis_15 Start: 13369, Stop: 13719, Start Num: 14

Candidate Starts for Solosis_15:

(Start: 14 @13369 has 228 MA's), (Start: 17 @13420 has 7 MA's), (19, 13432), (20, 13435), (22, 13444), (27, 13465), (48, 13660),

Gene: Sophia_15 Start: 13357, Stop: 13707, Start Num: 14

Candidate Starts for Sophia_15:

(Start: 14 @13357 has 228 MA's), (Start: 17 @13408 has 7 MA's), (19, 13420), (20, 13423), (22, 13432), (27, 13453), (48, 13648),

Gene: Soto_16 Start: 13647, Stop: 13997, Start Num: 14

Candidate Starts for Soto_16:

(Start: 14 @13647 has 228 MA's), (Start: 17 @13698 has 7 MA's), (19, 13710), (20, 13713), (22, 13722), (27, 13743), (48, 13938),

Gene: Spartan300_16 Start: 13647, Stop: 13997, Start Num: 14

Candidate Starts for Spartan300_16:

(Start: 14 @13647 has 228 MA's), (Start: 17 @13698 has 7 MA's), (19, 13710), (20, 13713), (22, 13722), (27, 13743), (48, 13938),

Gene: Squid_16 Start: 13357, Stop: 13707, Start Num: 14

Candidate Starts for Squid_16:

(Start: 14 @13357 has 228 MA's), (Start: 17 @13408 has 7 MA's), (19, 13420), (20, 13423), (22, 13432), (27, 13453), (48, 13648),

Gene: Squiggle_16 Start: 13357, Stop: 13707, Start Num: 14

Candidate Starts for Squiggle_16:

(Start: 14 @13357 has 228 MA's), (Start: 17 @13408 has 7 MA's), (19, 13420), (20, 13423), (22, 13432), (27, 13453), (48, 13648),

Gene: Stargaze_30 Start: 28544, Stop: 28897, Start Num: 15

Candidate Starts for Stargaze_30:

(Start: 15 @28544 has 52 MA's), (18, 28595), (24, 28622), (26, 28634), (31, 28670), (32, 28673), (39, 28760), (44, 28796), (52, 28877),

Gene: Stinger_14 Start: 13873, Stop: 14244, Start Num: 14

Candidate Starts for Stinger_14:

(Start: 14 @13873 has 228 MA's), (Start: 17 @13924 has 7 MA's), (19, 13936), (22, 13948), (32, 14005), (33, 14011), (42, 14122), (43, 14131), (46, 14155),

Gene: Struggle_15 Start: 13203, Stop: 13553, Start Num: 14

Candidate Starts for Struggle_15:

(Start: 14 @13203 has 228 MA's), (Start: 17 @13254 has 7 MA's), (19, 13266), (20, 13269), (22, 13278), (27, 13299), (48, 13494),

Gene: Surely_16 Start: 13659, Stop: 14009, Start Num: 14

Candidate Starts for Surely_16:

(Start: 14 @13659 has 228 MA's), (Start: 17 @13710 has 7 MA's), (19, 13722), (20, 13725), (22, 13734), (27, 13755), (48, 13950),

Gene: Telesworld_15 Start: 13357, Stop: 13707, Start Num: 14

Candidate Starts for Telesworld_15:

(Start: 14 @13357 has 228 MA's), (Start: 17 @13408 has 7 MA's), (19, 13420), (20, 13423), (22, 13432), (27, 13453), (48, 13648),

Gene: Thonko_17 Start: 13214, Stop: 13540, Start Num: 14

Candidate Starts for Thonko_17:

(8, 13052), (Start: 14 @13214 has 228 MA's), (Start: 17 @13265 has 7 MA's), (22, 13289), (26, 13307),

Gene: Timmi_15 Start: 13369, Stop: 13719, Start Num: 14

Candidate Starts for Timmi_15:

(Start: 14 @13369 has 228 MA's), (Start: 17 @13420 has 7 MA's), (19, 13432), (20, 13435), (22, 13444), (27, 13465), (48, 13660),

Gene: TomBombadil_16 Start: 13653, Stop: 14003, Start Num: 14

Candidate Starts for TomBombadil_16:

(Start: 14 @13653 has 228 MA's), (Start: 17 @13704 has 7 MA's), (19, 13716), (20, 13719), (22, 13728), (27, 13749), (48, 13944),

Gene: TomBrady_30 Start: 26791, Stop: 27111, Start Num: 15

Candidate Starts for TomBrady_30:

(Start: 15 @26791 has 52 MA's), (20, 26854), (23, 26866), (25, 26872), (26, 26881), (29, 26896), (31, 26917), (32, 26920), (34, 26935), (36, 26950), (37, 26962), (45, 27040), (51, 27100),

Gene: Tomlarah_16 Start: 13644, Stop: 13994, Start Num: 14

Candidate Starts for Tomlarah_16:

(Start: 14 @13644 has 228 MA's), (Start: 17 @13695 has 7 MA's), (19, 13707), (20, 13710), (22, 13719), (27, 13740), (48, 13935),

Gene: Toni_15 Start: 13355, Stop: 13705, Start Num: 14

Candidate Starts for Toni_15:

(Start: 14 @13355 has 228 MA's), (Start: 17 @13406 has 7 MA's), (19, 13418), (20, 13421), (22, 13430), (27, 13451), (48, 13646),

Gene: Tooj_16 Start: 13657, Stop: 14007, Start Num: 14

Candidate Starts for Tooj_16:

(Start: 14 @13657 has 228 MA's), (Start: 17 @13708 has 7 MA's), (19, 13720), (20, 13723), (22, 13732), (27, 13753), (48, 13948),

Gene: True_15 Start: 13358, Stop: 13708, Start Num: 14

Candidate Starts for True_15:

(Start: 14 @13358 has 228 MA's), (Start: 17 @13409 has 7 MA's), (19, 13421), (20, 13424), (22, 13433), (27, 13454), (48, 13649),

Gene: Trypo_16 Start: 13647, Stop: 13997, Start Num: 14

Candidate Starts for Trypo_16:

(Start: 14 @13647 has 228 MA's), (Start: 17 @13698 has 7 MA's), (19, 13710), (20, 13713), (22, 13722), (27, 13743), (48, 13938),

Gene: TyrionL_15 Start: 13209, Stop: 13559, Start Num: 14

Candidate Starts for TyrionL_15:

(Start: 14 @13209 has 228 MA's), (Start: 17 @13260 has 7 MA's), (19, 13272), (20, 13275), (22, 13284), (27, 13305), (48, 13500),

Gene: UAch1_16 Start: 13668, Stop: 14018, Start Num: 14

Candidate Starts for UAch1_16:

(Start: 14 @13668 has 228 MA's), (Start: 17 @13719 has 7 MA's), (19, 13731), (20, 13734), (22, 13743), (27, 13764), (48, 13959),

Gene: Ubuntu_35 Start: 30016, Stop: 30336, Start Num: 14

Candidate Starts for Ubuntu_35:

(Start: 14 @30016 has 228 MA's), (23, 30094), (26, 30109), (28, 30121), (31, 30151), (33, 30160), (37, 30196), (41, 30229), (47, 30283),

Gene: Usavi_16 Start: 13659, Stop: 14009, Start Num: 14

Candidate Starts for Usavi_16:

(Start: 14 @13659 has 228 MA's), (Start: 17 @13710 has 7 MA's), (20, 13725), (22, 13734), (27, 13755), (48, 13950),

Gene: Valjean_16 Start: 13650, Stop: 14000, Start Num: 14

Candidate Starts for Valjean_16:

(Start: 14 @13650 has 228 MA's), (Start: 17 @13701 has 7 MA's), (19, 13713), (20, 13716), (22, 13725), (27, 13746), (48, 13941),

Gene: Vaticameos_16 Start: 13348, Stop: 13698, Start Num: 14

Candidate Starts for Vaticameos_16:

(Start: 14 @13348 has 228 MA's), (Start: 17 @13399 has 7 MA's), (19, 13411), (20, 13414), (22, 13423), (27, 13444), (48, 13639),

Gene: Veritas_15 Start: 13197, Stop: 13547, Start Num: 14

Candidate Starts for Veritas_15:

(Start: 14 @13197 has 228 MA's), (Start: 17 @13248 has 7 MA's), (19, 13260), (20, 13263), (22, 13272), (27, 13293), (48, 13488),

Gene: Vincenzo_17 Start: 16153, Stop: 16518, Start Num: 14

Candidate Starts for Vincenzo_17:

(Start: 14 @16153 has 228 MA's), (Start: 17 @16207 has 7 MA's), (19, 16219), (22, 16231), (26, 16249),

Gene: VioletZ_16 Start: 15407, Stop: 15778, Start Num: 14

Candidate Starts for VioletZ_16:

(Start: 14 @15407 has 228 MA's), (Start: 17 @15458 has 7 MA's), (19, 15470), (20, 15473), (22, 15482), (26, 15500), (32, 15539), (42, 15656),

Gene: Virapocalypse_16 Start: 13642, Stop: 13992, Start Num: 14

Candidate Starts for Virapocalypse_16:

(Start: 14 @13642 has 228 MA's), (Start: 17 @13693 has 7 MA's), (19, 13705), (20, 13708), (22, 13717), (27, 13738), (48, 13933),

Gene: Vista_16 Start: 13653, Stop: 14003, Start Num: 14

Candidate Starts for Vista_16:

(Start: 14 @13653 has 228 MA's), (Start: 17 @13704 has 7 MA's), (19, 13716), (20, 13719), (22, 13728), (27, 13749), (48, 13944),

Gene: Vivaldi_16 Start: 13684, Stop: 14034, Start Num: 14

Candidate Starts for Vivaldi_16:

(Start: 14 @13684 has 228 MA's), (Start: 17 @13735 has 7 MA's), (19, 13747), (20, 13750), (22, 13759), (27, 13780), (48, 13975),

Gene: Waleliano_16 Start: 15377, Stop: 15748, Start Num: 14

Candidate Starts for Waleliano_16:

(Start: 14 @15377 has 228 MA's), (Start: 17 @15428 has 7 MA's), (19, 15440), (20, 15443), (22, 15452), (26, 15470), (32, 15509), (42, 15626),

Gene: Wallhey_15 Start: 13215, Stop: 13565, Start Num: 14

Candidate Starts for Wallhey_15:

(Start: 14 @13215 has 228 MA's), (Start: 17 @13266 has 7 MA's), (19, 13278), (20, 13281), (22, 13290), (27, 13311), (48, 13506),

Gene: Waterdiva_16 Start: 13651, Stop: 14001, Start Num: 14

Candidate Starts for Waterdiva_16:

(Start: 14 @13651 has 228 MA's), (Start: 17 @13702 has 7 MA's), (19, 13714), (20, 13717), (22, 13726), (27, 13747), (48, 13942),

Gene: Webster2_35 Start: 30016, Stop: 30336, Start Num: 14

Candidate Starts for Webster2_35:

(Start: 14 @30016 has 228 MA's), (23, 30094), (26, 30109), (28, 30121), (31, 30151), (33, 30160), (37, 30196), (41, 30229), (47, 30283),

Gene: Weher20_16 Start: 13641, Stop: 13991, Start Num: 14

Candidate Starts for Weher20_16:

(Start: 14 @13641 has 228 MA's), (Start: 17 @13692 has 7 MA's), (19, 13704), (20, 13707), (22, 13716), (27, 13737), (48, 13932),

Gene: Weirido19_31 Start: 28110, Stop: 28523, Start Num: 15

Candidate Starts for Weirido19_31:

(Start: 15 @28110 has 52 MA's), (23, 28185), (30, 28230), (35, 28266),

Gene: Windsor_15 Start: 13317, Stop: 13667, Start Num: 14

Candidate Starts for Windsor_15:

(Start: 14 @13317 has 228 MA's), (Start: 17 @13368 has 7 MA's), (19, 13380), (20, 13383), (22, 13392), (27, 13413), (48, 13608),

Gene: Wishmaker_34 Start: 30016, Stop: 30336, Start Num: 14

Candidate Starts for Wishmaker_34:

(Start: 14 @30016 has 228 MA's), (23, 30094), (26, 30109), (28, 30121), (31, 30151), (33, 30160), (37, 30196), (41, 30229), (47, 30283),

Gene: Xavier_15 Start: 13369, Stop: 13719, Start Num: 14

Candidate Starts for Xavier_15:

(Start: 14 @13369 has 228 MA's), (Start: 17 @13420 has 7 MA's), (19, 13432), (20, 13435), (22, 13444), (27, 13465), (48, 13660),

Gene: YouGoGlencoco_16 Start: 13647, Stop: 13997, Start Num: 14

Candidate Starts for YouGoGlencoco_16:

(Start: 14 @13647 has 228 MA's), (Start: 17 @13698 has 7 MA's), (19, 13710), (20, 13713), (22, 13722), (27, 13743), (48, 13938),

Gene: Zaider_17 Start: 13880, Stop: 14230, Start Num: 14

Candidate Starts for Zaider_17:

(Start: 14 @13880 has 228 MA's), (Start: 17 @13931 has 7 MA's), (19, 13943), (20, 13946), (22, 13955), (27, 13976), (48, 14171),

Gene: Zelda_16 Start: 13650, Stop: 14000, Start Num: 14

Candidate Starts for Zelda_16:

(Start: 14 @13650 has 228 MA's), (Start: 17 @13701 has 7 MA's), (19, 13713), (20, 13716), (22, 13725), (27, 13746), (48, 13941),

Gene: Zemanar_17 Start: 15428, Stop: 15748, Start Num: 17

Candidate Starts for Zemanar_17:

(Start: 14 @15377 has 228 MA's), (Start: 17 @15428 has 7 MA's), (19, 15440), (20, 15443), (22, 15452), (26, 15470), (32, 15509), (42, 15626),

Gene: Zombie_30 Start: 26790, Stop: 27110, Start Num: 15

Candidate Starts for Zombie_30:

(Start: 15 @26790 has 52 MA's), (20, 26853), (23, 26865), (25, 26871), (26, 26880), (29, 26895), (31, 26916), (32, 26919), (34, 26934), (36, 26949), (37, 26961), (45, 27039), (51, 27099),

Gene: Zonia_16 Start: 13664, Stop: 14014, Start Num: 14

Candidate Starts for Zonia_16:

(Start: 14 @13664 has 228 MA's), (Start: 17 @13715 has 7 MA's), (19, 13727), (20, 13730), (22, 13739), (27, 13760), (48, 13955),